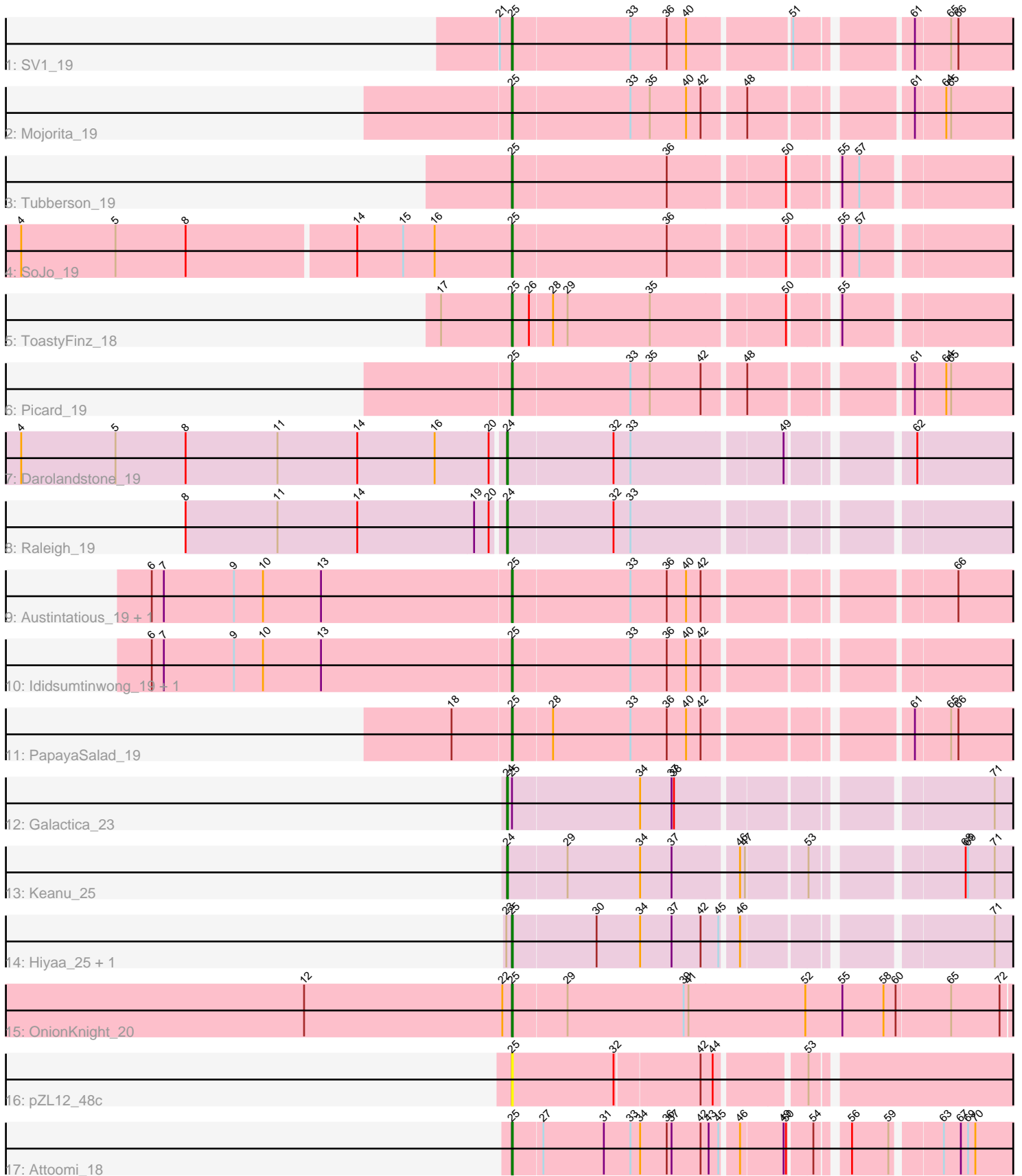


Zoomed Pham 216552



Note: Tracks are now grouped by subcluster and scaled. Switching in subcluster is indicated by changes in track color. Track scale is now set by default to display the region 30 bp upstream of start 1 to 30 bp downstream of the last possible start. If this default region is judged to be packed too tightly with annotated starts, the track will be further scaled to only show that region of the ORF with annotated starts. This action will be indicated by adding "Zoomed" to the title. For starts, yellow indicates the location of called starts comprised solely of Glimmer/GeneMark auto-annotations, green indicates the location of called starts with at least 1 manual gene annotation.

Pham 216552 Report

This analysis was run 02/22/25 on database version 588.

WARNING: Pham size does not match number of genes in report. Either unphamerated genes have been added (by you) or starterator has removed genes due to invalid start codon.

Pham number 216552 has 20 members, 2 are drafts.

Phages represented in each track:

- Track 1 : SV1_19
- Track 2 : Mojorita_19
- Track 3 : Tubberson_19
- Track 4 : SoJo_19
- Track 5 : ToastyFinz_18
- Track 6 : Picard_19
- Track 7 : Darolandstone_19
- Track 8 : Raleigh_19
- Track 9 : Austintatious_19, Lishka_18
- Track 10 : Ididsumtinwong_19, Bioscum_19
- Track 11 : PapayaSalad_19
- Track 12 : Galactica_23
- Track 13 : Keanu_25
- Track 14 : Hiyaa_25, Spocter_25
- Track 15 : OnionKnight_20
- Track 16 : pZL12_48c
- Track 17 : Attoomi_18

Summary of Final Annotations (See graph section above for start numbers):

The start number called the most often in the published annotations is 25, it was called in 14 of the 18 non-draft genes in the pham.

Genes that call this "Most Annotated" start:

- Attoomi_18, Austintatious_19, Bioscum_19, Hiyaa_25, Ididsumtinwong_19, Lishka_18, Mojorita_19, OnionKnight_20, PapayaSalad_19, Picard_19, SV1_19, SoJo_19, Spocter_25, ToastyFinz_18, Tubberson_19, pZL12_48c,

Genes that have the "Most Annotated" start but do not call it:

- Galactica_23,

Genes that do not have the "Most Annotated" start:

- Darolandstone_19, Keanu_25, Raleigh_19,

Summary by start number:

Start 24:

- Found in 4 of 20 (20.0%) of genes in pham
- Manual Annotations of this start: 4 of 18
- Called 100.0% of time when present
- Phage (with cluster) where this start called: Darolandstone_19 (BC2), Galactica_23 (BQ), Keanu_25 (BQ), Raleigh_19 (BC2),

Start 25:

- Found in 17 of 20 (85.0%) of genes in pham
- Manual Annotations of this start: 14 of 18
- Called 94.1% of time when present
- Phage (with cluster) where this start called: Attoomi_18 (singleton), Austintatious_19 (BC3), Bioscum_19 (BC3), Hiyaa_25 (BQ), Ididsumtinwong_19 (BC3), Lishka_18 (BC3), Mojorita_19 (BC1), OnionKnight_20 (singleton), PapayaSalad_19 (BC3), Picard_19 (BC1), SV1_19 (BC1), SoJo_19 (BC1), Spocter_25 (BQ), ToastyFinz_18 (BC1), Tubberson_19 (BC1), pZL12_48c (singleton),

Summary by clusters:

There are 5 clusters represented in this pham: singleton, BC3, BC1, BC2, BQ,

Info for manual annotations of cluster BC1:

- Start number 25 was manually annotated 6 times for cluster BC1.

Info for manual annotations of cluster BC2:

- Start number 24 was manually annotated 2 times for cluster BC2.

Info for manual annotations of cluster BC3:

- Start number 25 was manually annotated 4 times for cluster BC3.

Info for manual annotations of cluster BQ:

- Start number 24 was manually annotated 2 times for cluster BQ.
- Start number 25 was manually annotated 2 times for cluster BQ.

Gene Information:

Gene: Attoomi_18 Start: 15464, Stop: 16561, Start Num: 25

Candidate Starts for Attoomi_18:

(Start: 25 @15464 has 14 MA's), (27, 15500), (31, 15575), (33, 15608), (34, 15620), (36, 15653), (37, 15659), (42, 15695), (43, 15704), (45, 15716), (46, 15734), (49, 15785), (50, 15788), (54, 15815), (56, 15845), (59, 15890), (63, 15944), (67, 15965), (69, 15974), (70, 15983), (73, 16043), (78, 16079), (80, 16097), (81, 16100), (83, 16118), (85, 16133), (88, 16154), (89, 16163), (90, 16187), (92, 16199), (100, 16301), (102, 16307), (109, 16379), (117, 16487), (118, 16490), (121, 16502),

Gene: Austintatious_19 Start: 14189, Stop: 15319, Start Num: 25

Candidate Starts for Austintatious_19:

(6, 13745), (7, 13760), (9, 13847), (10, 13883), (13, 13955), (Start: 25 @14189 has 14 MA's), (33, 14333), (36, 14378), (40, 14402), (42, 14420), (66, 14693), (79, 14822), (80, 14825), (85, 14861), (95, 14951), (97, 14963), (100, 15032), (109, 15110), (117, 15221),

Gene: Bioscum_19 Start: 14225, Stop: 15355, Start Num: 25

Candidate Starts for Bioscum_19:

(6, 13781), (7, 13796), (9, 13883), (10, 13919), (13, 13991), (Start: 25 @14225 has 14 MA's), (33, 14369), (36, 14414), (40, 14438), (42, 14456), (79, 14858), (80, 14861), (95, 14987), (97, 14999), (100, 15068), (109, 15146),

Gene: Darolandstone_19 Start: 14810, Stop: 15910, Start Num: 24

Candidate Starts for Darolandstone_19:

(4, 14216), (5, 14333), (8, 14420), (11, 14534), (14, 14633), (16, 14729), (20, 14795), (Start: 24 @14810 has 4 MA's), (32, 14939), (33, 14960), (49, 15137), (62, 15266), (74, 15401), (107, 15713), (117, 15836), (121, 15851), (123, 15896),

Gene: Galactica_23 Start: 20117, Stop: 21220, Start Num: 24

Candidate Starts for Galactica_23:

(Start: 24 @20117 has 4 MA's), (Start: 25 @20123 has 14 MA's), (34, 20279), (37, 20318), (38, 20321), (71, 20666), (74, 20708), (80, 20753), (95, 20879), (105, 20990), (110, 21038), (116, 21128),

Gene: Hiyaa_25 Start: 21164, Stop: 22261, Start Num: 25

Candidate Starts for Hiyaa_25:

(23, 21158), (Start: 25 @21164 has 14 MA's), (30, 21266), (34, 21320), (37, 21359), (42, 21395), (45, 21416), (46, 21434), (71, 21707), (73, 21740), (77, 21773), (80, 21794), (95, 21920), (105, 22031), (112, 22085),

Gene: Ididsumtinwong_19 Start: 14225, Stop: 15355, Start Num: 25

Candidate Starts for Ididsumtinwong_19:

(6, 13781), (7, 13796), (9, 13883), (10, 13919), (13, 13991), (Start: 25 @14225 has 14 MA's), (33, 14369), (36, 14414), (40, 14438), (42, 14456), (79, 14858), (80, 14861), (95, 14987), (97, 14999), (100, 15068), (109, 15146),

Gene: Keanu_25 Start: 21193, Stop: 22296, Start Num: 24

Candidate Starts for Keanu_25:

(Start: 24 @21193 has 4 MA's), (29, 21265), (34, 21355), (37, 21394), (46, 21469), (47, 21475), (53, 21544), (68, 21706), (69, 21709), (71, 21742), (73, 21775), (80, 21829), (84, 21853), (94, 21952), (95, 21955), (100, 22033), (116, 22204),

Gene: Lishka_18 Start: 14189, Stop: 15319, Start Num: 25

Candidate Starts for Lishka_18:

(6, 13745), (7, 13760), (9, 13847), (10, 13883), (13, 13955), (Start: 25 @14189 has 14 MA's), (33, 14333), (36, 14378), (40, 14402), (42, 14420), (66, 14693), (79, 14822), (80, 14825), (85, 14861), (95, 14951), (97, 14963), (100, 15032), (109, 15110), (117, 15221),

Gene: Mojerita_19 Start: 14327, Stop: 15457, Start Num: 25

Candidate Starts for Mojerita_19:

(Start: 25 @14327 has 14 MA's), (33, 14471), (35, 14495), (40, 14540), (42, 14558), (48, 14606), (61, 14780), (64, 14816), (65, 14822), (95, 15089), (97, 15101), (109, 15248),

Gene: OnionKnight_20 Start: 16035, Stop: 17189, Start Num: 25

Candidate Starts for OnionKnight_20:

(3, 15387), (12, 15777), (22, 16023), (Start: 25 @16035 has 14 MA's), (29, 16101), (39, 16245), (41, 16251), (52, 16395), (55, 16440), (58, 16491), (60, 16506), (65, 16572), (72, 16632), (90, 16800), (91, 16803), (92, 16812), (96, 16851), (99, 16908), (100, 16926), (101, 16929), (103, 16944), (104, 16953), (106, 16971), (108, 16992), (111, 17010), (115, 17049), (117, 17112), (120, 17124), (124, 17178), (125, 17184),

Gene: PapayaSalad_19 Start: 14200, Stop: 15330, Start Num: 25

Candidate Starts for PapayaSalad_19:

(18, 14128), (Start: 25 @14200 has 14 MA's), (28, 14248), (33, 14344), (36, 14389), (40, 14413), (42, 14431), (61, 14653), (65, 14695), (66, 14704), (79, 14833), (80, 14836), (95, 14962), (97, 14974), (100, 15043), (109, 15121),

Gene: Picard_19 Start: 14321, Stop: 15451, Start Num: 25

Candidate Starts for Picard_19:

(Start: 25 @14321 has 14 MA's), (33, 14465), (35, 14489), (42, 14552), (48, 14600), (61, 14774), (64, 14810), (65, 14816), (80, 14957), (95, 15083), (97, 15095), (109, 15242),

Gene: Raleigh_19 Start: 14995, Stop: 16095, Start Num: 24

Candidate Starts for Raleigh_19:

(8, 14605), (11, 14719), (14, 14818), (19, 14962), (20, 14980), (Start: 24 @14995 has 4 MA's), (32, 15124), (33, 15145), (74, 15586), (107, 15898), (121, 16036), (122, 16075), (123, 16081),

Gene: SV1_19 Start: 14433, Stop: 15563, Start Num: 25

Candidate Starts for SV1_19:

(21, 14418), (Start: 25 @14433 has 14 MA's), (33, 14577), (36, 14622), (40, 14646), (51, 14763), (61, 14886), (65, 14928), (66, 14937), (79, 15066), (87, 15123), (95, 15195), (97, 15207), (98, 15225), (100, 15276), (109, 15354),

Gene: SoJo_19 Start: 14651, Stop: 15748, Start Num: 25

Candidate Starts for SoJo_19:

(1, 13649), (2, 13706), (4, 14051), (5, 14168), (8, 14255), (14, 14459), (15, 14516), (16, 14555), (Start: 25 @14651 has 14 MA's), (36, 14840), (50, 14975), (55, 15020), (57, 15041), (80, 15281), (95, 15407), (100, 15485), (111, 15569), (112, 15572), (119, 15680), (123, 15731),

Gene: Spocter_25 Start: 21152, Stop: 22249, Start Num: 25

Candidate Starts for Spocter_25:

(23, 21146), (Start: 25 @21152 has 14 MA's), (30, 21254), (34, 21308), (37, 21347), (42, 21383), (45, 21404), (46, 21422), (71, 21695), (73, 21728), (77, 21761), (80, 21782), (95, 21908), (105, 22019), (112, 22073),

Gene: ToastyFinz_18 Start: 14328, Stop: 15425, Start Num: 25

Candidate Starts for ToastyFinz_18:

(17, 14241), (Start: 25 @14328 has 14 MA's), (26, 14349), (28, 14376), (29, 14394), (35, 14496), (50, 14652), (55, 14697), (75, 14916), (76, 14919), (93, 15075), (95, 15084), (111, 15246), (112, 15249), (114, 15264), (123, 15408),

Gene: Tubberson_19 Start: 14650, Stop: 15747, Start Num: 25

Candidate Starts for Tubberson_19:

(Start: 25 @14650 has 14 MA's), (36, 14839), (50, 14974), (55, 15019), (57, 15040), (80, 15280), (95, 15406), (100, 15484), (107, 15547), (111, 15568), (112, 15571), (119, 15679), (123, 15730),

Gene: pZL12_48c Start: 37533, Stop: 36430, Start Num: 25

Candidate Starts for pZL12_48c:

(Start: 25 @37533 has 14 MA's), (32, 37407), (42, 37308), (44, 37293), (53, 37194), (74, 36936), (82, 36876), (86, 36846), (113, 36582),