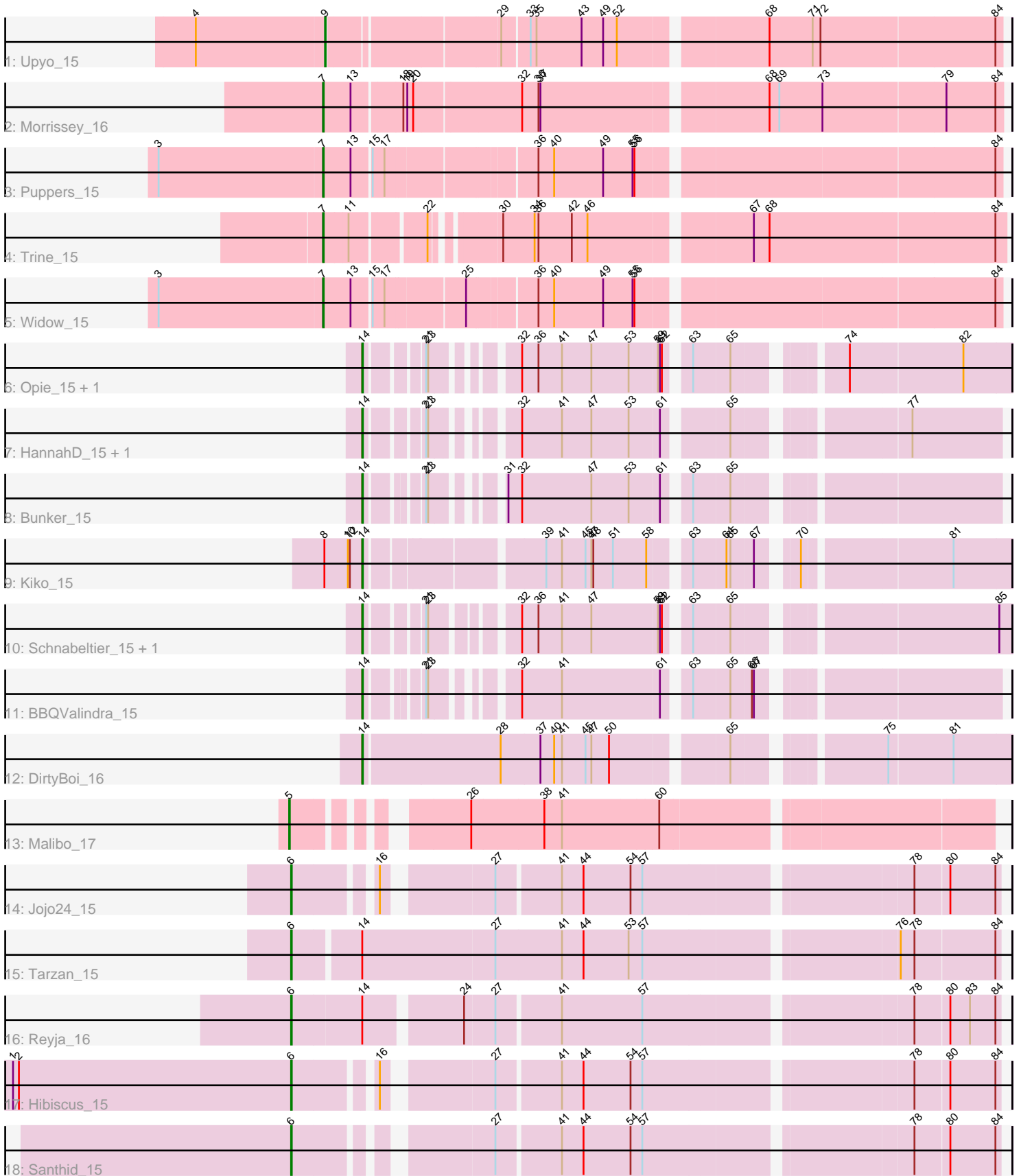


Pham 216559



Note: Tracks are now grouped by subcluster and scaled. Switching in subcluster is indicated by changes in track color. Track scale is now set by default to display the region 30 bp upstream of start 1 to 30 bp downstream of the last possible start. If this default region is judged to be packed too tightly with annotated starts, the track will be further scaled to only show that region of the ORF with annotated starts. This action will be indicated by adding "Zoomed" to the title. For starts, yellow indicates the location of called starts comprised solely of Glimmer/GeneMark auto-annotations, green indicates the location of called starts with at least 1 manual gene annotation.

Pham 216559 Report

This analysis was run 02/22/25 on database version 588.

Pham number 216559 has 21 members, 0 are drafts.

Phages represented in each track:

- Track 1 : Upyo_15
- Track 2 : Morrissey_16
- Track 3 : Puppies_15
- Track 4 : Trine_15
- Track 5 : Widow_15
- Track 6 : Opie_15, Eyes_15
- Track 7 : HannahD_15, GEazy_15
- Track 8 : Bunker_15
- Track 9 : Kiko_15
- Track 10 : Schnabeltier_15, MagicMan_15
- Track 11 : BBQValindra_15
- Track 12 : DirtyBoi_16
- Track 13 : Malibo_17
- Track 14 : Jojo24_15
- Track 15 : Tarzan_15
- Track 16 : Reyja_16
- Track 17 : Hibiscus_15
- Track 18 : Santhid_15

Summary of Final Annotations (See graph section above for start numbers):

The start number called the most often in the published annotations is 14, it was called in 10 of the 21 non-draft genes in the pham.

Genes that call this "Most Annotated" start:

- BBQValindra_15, Bunker_15, DirtyBoi_16, Eyes_15, GEazy_15, HannahD_15, Kiko_15, MagicMan_15, Opie_15, Schnabeltier_15,

Genes that have the "Most Annotated" start but do not call it:

- Reyja_16, Tarzan_15,

Genes that do not have the "Most Annotated" start:

- Hibiscus_15, Jojo24_15, Malibo_17, Morrissey_16, Puppies_15, Santhid_15, Trine_15, Upyo_15, Widow_15,

Summary by start number:

Start 5:

- Found in 1 of 21 (4.8%) of genes in pham
- Manual Annotations of this start: 1 of 21
- Called 100.0% of time when present
- Phage (with cluster) where this start called: Malibo_17 (DW),

Start 6:

- Found in 5 of 21 (23.8%) of genes in pham
- Manual Annotations of this start: 5 of 21
- Called 100.0% of time when present
- Phage (with cluster) where this start called: Hibiscus_15 (DY), Jojo24_15 (DY), Reyja_16 (DY), Santhid_15 (DY), Tarzan_15 (DY),

Start 7:

- Found in 4 of 21 (19.0%) of genes in pham
- Manual Annotations of this start: 4 of 21
- Called 100.0% of time when present
- Phage (with cluster) where this start called: Morrissey_16 (CD), Puppies_15 (CD), Trine_15 (CD), Widow_15 (CD),

Start 9:

- Found in 1 of 21 (4.8%) of genes in pham
- Manual Annotations of this start: 1 of 21
- Called 100.0% of time when present
- Phage (with cluster) where this start called: Upyo_15 (CD),

Start 14:

- Found in 12 of 21 (57.1%) of genes in pham
- Manual Annotations of this start: 10 of 21
- Called 83.3% of time when present
- Phage (with cluster) where this start called: BBQValindra_15 (DB), Bunker_15 (DB), DirtyBoi_16 (DB), Eyes_15 (DB), GEazy_15 (DB), HannahD_15 (DB), Kiko_15 (DB), MagicMan_15 (DB), Opie_15 (DB), Schnabeltier_15 (DB),

Summary by clusters:

There are 4 clusters represented in this pham: DW, CD, DB, DY,

Info for manual annotations of cluster CD:

- Start number 7 was manually annotated 4 times for cluster CD.
- Start number 9 was manually annotated 1 time for cluster CD.

Info for manual annotations of cluster DB:

- Start number 14 was manually annotated 10 times for cluster DB.

Info for manual annotations of cluster DW:

- Start number 5 was manually annotated 1 time for cluster DW.

Info for manual annotations of cluster DY:

- Start number 6 was manually annotated 5 times for cluster DY.

Gene Information:

Gene: BBQValindra_15 Start: 9257, Stop: 10068, Start Num: 14

Candidate Starts for BBQValindra_15:

(Start: 14 @9257 has 10 MA's), (21, 9323), (23, 9326), (32, 9416), (41, 9476), (61, 9623), (63, 9653), (65, 9707), (66, 9737), (67, 9740),

Gene: Bunker_15 Start: 9257, Stop: 10068, Start Num: 14

Candidate Starts for Bunker_15:

(Start: 14 @9257 has 10 MA's), (21, 9323), (23, 9326), (31, 9395), (32, 9416), (47, 9521), (53, 9578), (61, 9623), (63, 9653), (65, 9707),

Gene: DirtyBoi_16 Start: 9613, Stop: 10517, Start Num: 14

Candidate Starts for DirtyBoi_16:

(Start: 14 @9613 has 10 MA's), (28, 9817), (37, 9877), (40, 9898), (41, 9910), (45, 9946), (47, 9955), (50, 9982), (65, 10141), (75, 10333), (81, 10429),

Gene: Eyes_15 Start: 9267, Stop: 10099, Start Num: 14

Candidate Starts for Eyes_15:

(Start: 14 @9267 has 10 MA's), (21, 9336), (23, 9339), (32, 9432), (36, 9456), (41, 9492), (47, 9537), (53, 9594), (59, 9636), (61, 9639), (62, 9642), (63, 9669), (65, 9723), (74, 9858), (82, 10026),

Gene: GEazy_15 Start: 9276, Stop: 10090, Start Num: 14

Candidate Starts for GEazy_15:

(Start: 14 @9276 has 10 MA's), (21, 9345), (23, 9348), (32, 9438), (41, 9498), (47, 9543), (53, 9600), (61, 9645), (65, 9729), (77, 9954),

Gene: HannahD_15 Start: 9276, Stop: 10090, Start Num: 14

Candidate Starts for HannahD_15:

(Start: 14 @9276 has 10 MA's), (21, 9345), (23, 9348), (32, 9438), (41, 9498), (47, 9543), (53, 9600), (61, 9645), (65, 9729), (77, 9954),

Gene: Hibiscus_15 Start: 8943, Stop: 9913, Start Num: 6

Candidate Starts for Hibiscus_15:

(1, 8517), (2, 8526), (Start: 6 @8943 has 5 MA's), (16, 9048), (27, 9192), (41, 9282), (44, 9315), (54, 9387), (57, 9405), (78, 9786), (80, 9837), (84, 9906),

Gene: Jojo24_15 Start: 8937, Stop: 9907, Start Num: 6

Candidate Starts for Jojo24_15:

(Start: 6 @8937 has 5 MA's), (16, 9042), (27, 9186), (41, 9276), (44, 9309), (54, 9381), (57, 9399), (78, 9780), (80, 9831), (84, 9900),

Gene: Kiko_15 Start: 9515, Stop: 10383, Start Num: 14

Candidate Starts for Kiko_15:

(8, 9458), (10, 9494), (12, 9497), (Start: 14 @9515 has 10 MA's), (39, 9752), (41, 9776), (45, 9812), (47, 9821), (48, 9824), (51, 9854), (58, 9905), (63, 9953), (64, 10001), (65, 10007), (67, 10040), (70, 10085), (81, 10295),

Gene: MagicMan_15 Start: 9597, Stop: 10435, Start Num: 14

Candidate Starts for MagicMan_15:

(Start: 14 @9597 has 10 MA's), (21, 9666), (23, 9669), (32, 9768), (36, 9792), (41, 9828), (47, 9873), (59, 9972), (61, 9975), (62, 9978), (63, 10005), (65, 10059), (85, 10416),

Gene: Malibo_17 Start: 9627, Stop: 10582, Start Num: 5

Candidate Starts for Malibo_17:

(Start: 5 @9627 has 1 MA's), (26, 9828), (38, 9936), (41, 9963), (60, 10107),

Gene: Morrissey_16 Start: 9186, Stop: 10171, Start Num: 7

Candidate Starts for Morrissey_16:

(Start: 7 @9186 has 4 MA's), (13, 9228), (18, 9300), (19, 9306), (20, 9315), (32, 9471), (36, 9495), (37, 9498), (68, 9822), (69, 9837), (73, 9903), (79, 10086), (84, 10161),

Gene: Opie_15 Start: 9611, Stop: 10443, Start Num: 14

Candidate Starts for Opie_15:

(Start: 14 @9611 has 10 MA's), (21, 9680), (23, 9683), (32, 9776), (36, 9800), (41, 9836), (47, 9881), (53, 9938), (59, 9980), (61, 9983), (62, 9986), (63, 10013), (65, 10067), (74, 10202), (82, 10370),

Gene: Poppers_15 Start: 8726, Stop: 9696, Start Num: 7

Candidate Starts for Poppers_15:

(3, 8477), (Start: 7 @8726 has 4 MA's), (13, 8768), (15, 8795), (17, 8813), (36, 9023), (40, 9047), (49, 9122), (55, 9167), (56, 9170), (84, 9686),

Gene: Reyja_16 Start: 9079, Stop: 10085, Start Num: 6

Candidate Starts for Reyja_16:

(Start: 6 @9079 has 5 MA's), (Start: 14 @9184 has 10 MA's), (24, 9319), (27, 9364), (41, 9454), (57, 9577), (78, 9958), (80, 10009), (83, 10039), (84, 10078),

Gene: Santhid_15 Start: 8945, Stop: 9915, Start Num: 6

Candidate Starts for Santhid_15:

(Start: 6 @8945 has 5 MA's), (27, 9194), (41, 9284), (44, 9317), (54, 9389), (57, 9407), (78, 9788), (80, 9839), (84, 9908),

Gene: Schnabeltier_15 Start: 9598, Stop: 10436, Start Num: 14

Candidate Starts for Schnabeltier_15:

(Start: 14 @9598 has 10 MA's), (21, 9667), (23, 9670), (32, 9769), (36, 9793), (41, 9829), (47, 9874), (59, 9973), (61, 9976), (62, 9979), (63, 10006), (65, 10060), (85, 10417),

Gene: Tarzan_15 Start: 8933, Stop: 9960, Start Num: 6

Candidate Starts for Tarzan_15:

(Start: 6 @8933 has 5 MA's), (Start: 14 @9029 has 10 MA's), (27, 9230), (41, 9329), (44, 9362), (53, 9431), (57, 9452), (76, 9812), (78, 9833), (84, 9953),

Gene: Trine_15 Start: 8732, Stop: 9684, Start Num: 7

Candidate Starts for Trine_15:

(Start: 7 @8732 has 4 MA's), (11, 8768), (22, 8867), (30, 8948), (34, 8996), (36, 9002), (42, 9053), (46, 9077), (67, 9305), (68, 9329), (84, 9668),

Gene: Upyo_15 Start: 8842, Stop: 9809, Start Num: 9

Candidate Starts for Upyo_15:

(4, 8647), (Start: 9 @8842 has 1 MA's), (29, 9082), (33, 9121), (35, 9130), (43, 9199), (49, 9232), (52, 9253), (68, 9460), (71, 9526), (72, 9538), (84, 9799),

Gene: Widow_15 Start: 8717, Stop: 9687, Start Num: 7

Candidate Starts for Widow_15:

(3, 8468), (Start: 7 @8717 has 4 MA's), (13, 8759), (15, 8786), (17, 8804), (25, 8918), (36, 9014), (40, 9038), (49, 9113), (55, 9158), (56, 9161), (84, 9677),