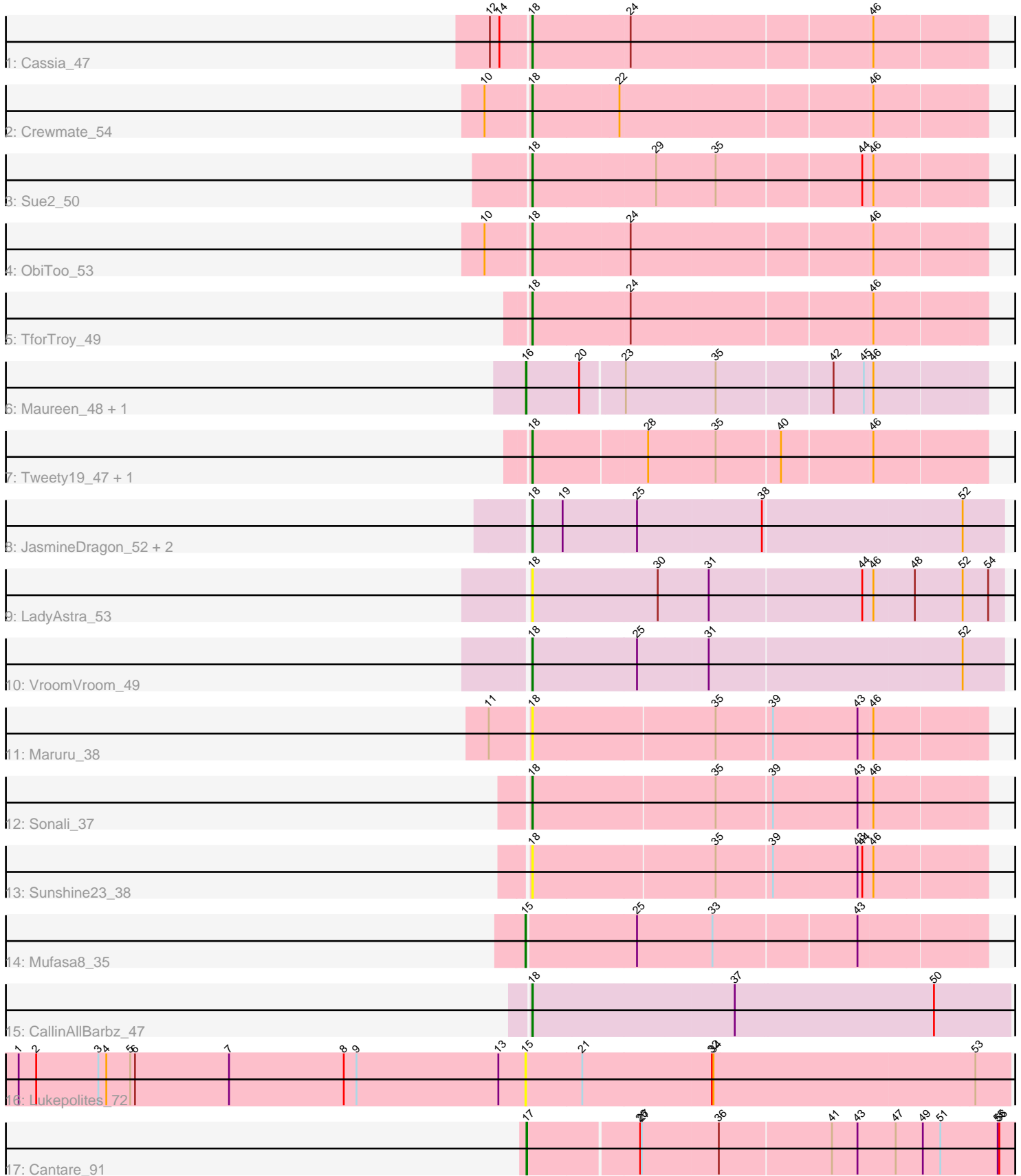


Pham 216568



Note: Tracks are now grouped by subcluster and scaled. Switching in subcluster is indicated by changes in track color. Track scale is now set by default to display the region 30 bp upstream of start 1 to 30 bp downstream of the last possible start. If this default region is judged to be packed too tightly with annotated starts, the track will be further scaled to only show that region of the ORF with annotated starts. This action will be indicated by adding "Zoomed" to the title. For starts, yellow indicates the location of called starts comprised solely of Glimmer/GeneMark auto-annotations, green indicates the location of called starts with at least 1 manual gene annotation.

Pham 216568 Report

This analysis was run 02/22/25 on database version 588.

Pham number 216568 has 21 members, 6 are drafts.

Phages represented in each track:

- Track 1 : Cassia_47
- Track 2 : Crewmate_54
- Track 3 : Sue2_50
- Track 4 : ObiToo_53
- Track 5 : TforTroy_49
- Track 6 : Maureen_48, Liebe_48
- Track 7 : Tweety19_47, Snek_46
- Track 8 : JasmineDragon_52, ShakeltOph_54, MiniMommy_54
- Track 9 : LadyAstra_53
- Track 10 : VroomVroom_49
- Track 11 : Maruru_38
- Track 12 : Sonali_37
- Track 13 : Sunshine23_38
- Track 14 : Mufasa8_35
- Track 15 : CallinAllBarbz_47
- Track 16 : Lukepolites_72
- Track 17 : Cantare_91

Summary of Final Annotations (See graph section above for start numbers):

The start number called the most often in the published annotations is 18, it was called in 11 of the 15 non-draft genes in the pham.

Genes that call this "Most Annotated" start:

- CallinAllBarbz_47, Cassia_47, Crewmate_54, JasmineDragon_52, LadyAstra_53, Maruru_38, MiniMommy_54, ObiToo_53, ShakeltOph_54, Snek_46, Sonali_37, Sue2_50, Sunshine23_38, TforTroy_49, Tweety19_47, VroomVroom_49,

Genes that have the "Most Annotated" start but do not call it:

-

Genes that do not have the "Most Annotated" start:

- Cantare_91, Liebe_48, Lukepolites_72, Maureen_48, Mufasa8_35,

Summary by start number:

Start 15:

- Found in 2 of 21 (9.5%) of genes in pham
- Manual Annotations of this start: 1 of 15
- Called 100.0% of time when present
- Phage (with cluster) where this start called: Lukepolites_72 (singleton), Mufasa8_35 (FG),

Start 16:

- Found in 2 of 21 (9.5%) of genes in pham
- Manual Annotations of this start: 2 of 15
- Called 100.0% of time when present
- Phage (with cluster) where this start called: Liebe_48 (AZ2), Maureen_48 (AZ2),

Start 17:

- Found in 1 of 21 (4.8%) of genes in pham
- Manual Annotations of this start: 1 of 15
- Called 100.0% of time when present
- Phage (with cluster) where this start called: Cantare_91 (singleton),

Start 18:

- Found in 16 of 21 (76.2%) of genes in pham
- Manual Annotations of this start: 11 of 15
- Called 100.0% of time when present
- Phage (with cluster) where this start called: CallinAllBarbz_47 (FP), Cassia_47 (AZ1), Crewmate_54 (AZ1), JasmineDragon_52 (AZ4), LadyAstra_53 (AZ4), Maruru_38 (FG), MiniMommy_54 (AZ4), ObiToo_53 (AZ1), ShakeltOph_54 (AZ4), Snek_46 (AZ3), Sonali_37 (FG), Sue2_50 (AZ1), Sunshine23_38 (FG), TforTroy_49 (AZ1), Tweety19_47 (AZ3), VroomVroom_49 (AZ4),

Summary by clusters:

There are 7 clusters represented in this pham: FP, singleton, FG, AZ1, AZ2, AZ3, AZ4,

Info for manual annotations of cluster AZ1:

- Start number 18 was manually annotated 5 times for cluster AZ1.

Info for manual annotations of cluster AZ2:

- Start number 16 was manually annotated 2 times for cluster AZ2.

Info for manual annotations of cluster AZ3:

- Start number 18 was manually annotated 2 times for cluster AZ3.

Info for manual annotations of cluster AZ4:

- Start number 18 was manually annotated 2 times for cluster AZ4.

Info for manual annotations of cluster FG:

- Start number 15 was manually annotated 1 time for cluster FG.
- Start number 18 was manually annotated 1 time for cluster FG.

Info for manual annotations of cluster FP:

- Start number 18 was manually annotated 1 time for cluster FP.

Gene Information:

Gene: CallinAllBarbz_47 Start: 33759, Stop: 34640, Start Num: 18

Candidate Starts for CallinAllBarbz_47:

(Start: 18 @33759 has 11 MA's), (37, 34131), (50, 34503),

Gene: Cantare_91 Start: 69371, Stop: 70267, Start Num: 17

Candidate Starts for Cantare_91:

(Start: 17 @69371 has 1 MA's), (26, 69572), (27, 69575), (36, 69716), (41, 69923), (43, 69971), (47, 70043), (49, 70091), (51, 70124), (55, 70232), (56, 70235),

Gene: Cassia_47 Start: 34201, Stop: 35019, Start Num: 18

Candidate Starts for Cassia_47:

(12, 34132), (14, 34150), (Start: 18 @34201 has 11 MA's), (24, 34381), (46, 34816),

Gene: Crewmate_54 Start: 35949, Stop: 36764, Start Num: 18

Candidate Starts for Crewmate_54:

(10, 35871), (Start: 18 @35949 has 11 MA's), (22, 36108), (46, 36561),

Gene: JasmineDragon_52 Start: 35594, Stop: 36457, Start Num: 18

Candidate Starts for JasmineDragon_52:

(Start: 18 @35594 has 11 MA's), (19, 35648), (25, 35786), (38, 36014), (52, 36380),

Gene: LadyAstra_53 Start: 35385, Stop: 36251, Start Num: 18

Candidate Starts for LadyAstra_53:

(Start: 18 @35385 has 11 MA's), (30, 35616), (31, 35709), (44, 35991), (46, 36012), (48, 36087), (52, 36174), (54, 36222),

Gene: Liebe_48 Start: 35450, Stop: 36277, Start Num: 16

Candidate Starts for Liebe_48:

(Start: 16 @35450 has 2 MA's), (20, 35549), (23, 35627), (35, 35792), (42, 36002), (45, 36059), (46, 36074),

Gene: Lukepolites_72 Start: 46172, Stop: 45276, Start Num: 15

Candidate Starts for Lukepolites_72:

(1, 47126), (2, 47093), (3, 46976), (4, 46961), (5, 46916), (6, 46907), (7, 46730), (8, 46514), (9, 46490), (13, 46223), (Start: 15 @46172 has 1 MA's), (21, 46067), (32, 45830), (34, 45827), (53, 45341),

Gene: Maruru_38 Start: 32121, Stop: 31306, Start Num: 18

Candidate Starts for Maruru_38:

(11, 32190), (Start: 18 @32121 has 11 MA's), (35, 31791), (39, 31689), (43, 31536), (46, 31509),

Gene: Maureen_48 Start: 35450, Stop: 36277, Start Num: 16

Candidate Starts for Maureen_48:

(Start: 16 @35450 has 2 MA's), (20, 35549), (23, 35627), (35, 35792), (42, 36002), (45, 36059), (46, 36074),

Gene: MiniMommy_54 Start: 35595, Stop: 36458, Start Num: 18

Candidate Starts for MiniMommy_54:

(Start: 18 @35595 has 11 MA's), (19, 35649), (25, 35787), (38, 36015), (52, 36381),

Gene: Mufasa8_35 Start: 29933, Stop: 29103, Start Num: 15

Candidate Starts for Mufasa8_35:

(Start: 15 @29933 has 1 MA's), (25, 29732), (33, 29594), (43, 29333),

Gene: ObiToo_53 Start: 35343, Stop: 36158, Start Num: 18

Candidate Starts for ObiToo_53:

(10, 35265), (Start: 18 @35343 has 11 MA's), (24, 35520), (46, 35955),

Gene: ShakeltOph_54 Start: 35594, Stop: 36457, Start Num: 18

Candidate Starts for ShakeltOph_54:

(Start: 18 @35594 has 11 MA's), (19, 35648), (25, 35786), (38, 36014), (52, 36380),

Gene: Snek_46 Start: 32794, Stop: 33606, Start Num: 18

Candidate Starts for Snek_46:

(Start: 18 @32794 has 11 MA's), (28, 32998), (35, 33118), (40, 33235), (46, 33400),

Gene: Sonali_37 Start: 32584, Stop: 31769, Start Num: 18

Candidate Starts for Sonali_37:

(Start: 18 @32584 has 11 MA's), (35, 32254), (39, 32152), (43, 31999), (46, 31972),

Gene: Sue2_50 Start: 35531, Stop: 36343, Start Num: 18

Candidate Starts for Sue2_50:

(Start: 18 @35531 has 11 MA's), (29, 35753), (35, 35858), (44, 36122), (46, 36140),

Gene: Sunshine23_38 Start: 32459, Stop: 31644, Start Num: 18

Candidate Starts for Sunshine23_38:

(Start: 18 @32459 has 11 MA's), (35, 32129), (39, 32027), (43, 31874), (44, 31865), (46, 31847),

Gene: TforTroy_49 Start: 34740, Stop: 35558, Start Num: 18

Candidate Starts for TforTroy_49:

(Start: 18 @34740 has 11 MA's), (24, 34920), (46, 35355),

Gene: Tweety19_47 Start: 32794, Stop: 33606, Start Num: 18

Candidate Starts for Tweety19_47:

(Start: 18 @32794 has 11 MA's), (28, 32998), (35, 33118), (40, 33235), (46, 33400),

Gene: VroomVroom_49 Start: 35179, Stop: 36042, Start Num: 18

Candidate Starts for VroomVroom_49:

(Start: 18 @35179 has 11 MA's), (25, 35371), (31, 35500), (52, 35965),