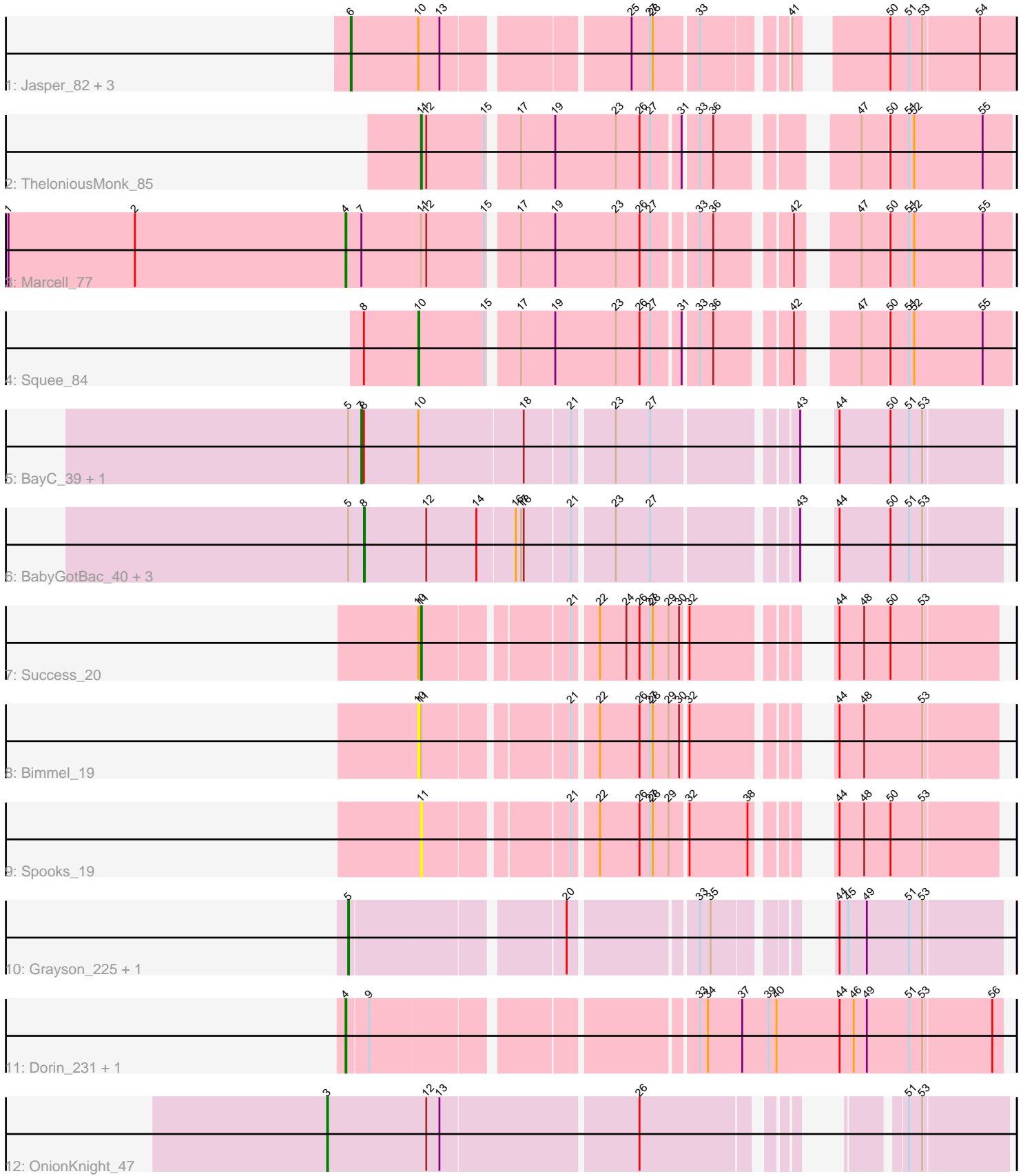


Pham 216569



Note: Tracks are now grouped by subcluster and scaled. Switching in subcluster is indicated by changes in track color. Track scale is now set by default to display the region 30 bp upstream of start 1 to 30 bp downstream of the last possible start. If this default region is judged to be packed too tightly with annotated starts, the track will be further scaled to only show that region of the ORF with annotated starts. This action will be indicated by adding "Zoomed" to the title. For starts, yellow indicates the location of called starts comprised solely of Glimmer/GeneMark auto-annotations, green indicates the location of called starts with at least 1 manual gene annotation.

Pham 216569 Report

This analysis was run 02/22/25 on database version 588.

Pham number 216569 has 21 members, 2 are drafts.

Phages represented in each track:

- Track 1 : Jasper_82, Rajelicia_84, PherrisBueller_82, Dreamboat_83
- Track 2 : TheloniousMonk_85
- Track 3 : Marcell_77
- Track 4 : Squee_84
- Track 5 : BayC_39, Salete_39
- Track 6 : BabyGotBac_40, Maih_38, Asis_39, TP1604_39
- Track 7 : Success_20
- Track 8 : Bimmel_19
- Track 9 : Spooks_19
- Track 10 : Grayson_225, Peregrin_219
- Track 11 : Dorin_231, Francesca_232
- Track 12 : OnionKnight_47

Summary of Final Annotations (See graph section above for start numbers):

The start number called the most often in the published annotations is 6, it was called in 4 of the 19 non-draft genes in the pham.

Genes that call this "Most Annotated" start:

- Dreamboat_83, Jasper_82, PherrisBueller_82, Rajelicia_84,

Genes that have the "Most Annotated" start but do not call it:

-

Genes that do not have the "Most Annotated" start:

- Asis_39, BabyGotBac_40, BayC_39, Bimmel_19, Dorin_231, Francesca_232, Grayson_225, Maih_38, Marcell_77, OnionKnight_47, Peregrin_219, Salete_39, Spooks_19, Squee_84, Success_20, TP1604_39, TheloniousMonk_85,

Summary by start number:

Start 3:

- Found in 1 of 21 (4.8%) of genes in pham
- Manual Annotations of this start: 1 of 19

- Called 100.0% of time when present
- Phage (with cluster) where this start called: OnionKnight_47 (singleton),

Start 4:

- Found in 3 of 21 (14.3%) of genes in pham
- Manual Annotations of this start: 3 of 19
- Called 100.0% of time when present
- Phage (with cluster) where this start called: Dorin_231 (CG), Francesca_232 (CG), Marcell_77 (A1),

Start 5:

- Found in 8 of 21 (38.1%) of genes in pham
- Manual Annotations of this start: 2 of 19
- Called 25.0% of time when present
- Phage (with cluster) where this start called: Grayson_225 (CB), Peregrin_219 (CB),

Start 6:

- Found in 4 of 21 (19.0%) of genes in pham
- Manual Annotations of this start: 4 of 19
- Called 100.0% of time when present
- Phage (with cluster) where this start called: Dreamboat_83 (A1), Jasper_82 (A1), PherrisBueller_82 (A1), Rajelicia_84 (A1),

Start 7:

- Found in 3 of 21 (14.3%) of genes in pham
- Manual Annotations of this start: 2 of 19
- Called 66.7% of time when present
- Phage (with cluster) where this start called: BayC_39 (BG), Salete_39 (BG),

Start 8:

- Found in 7 of 21 (33.3%) of genes in pham
- Manual Annotations of this start: 4 of 19
- Called 57.1% of time when present
- Phage (with cluster) where this start called: Asis_39 (BG), BabyGotBac_40 (BG), Maih_38 (BG), TP1604_39 (BG),

Start 10:

- Found in 9 of 21 (42.9%) of genes in pham
- Manual Annotations of this start: 1 of 19
- Called 22.2% of time when present
- Phage (with cluster) where this start called: Bimmel_19 (BT), Squee_84 (A1),

Start 11:

- Found in 5 of 21 (23.8%) of genes in pham
- Manual Annotations of this start: 2 of 19
- Called 60.0% of time when present
- Phage (with cluster) where this start called: Spooks_19 (BT), Success_20 (BT), TheloniousMonk_85 (A1),

Summary by clusters:

There are 6 clusters represented in this pham: BT, singleton, BG, CB, CG, A1,

Info for manual annotations of cluster A1:

- Start number 4 was manually annotated 1 time for cluster A1.
- Start number 6 was manually annotated 4 times for cluster A1.
- Start number 10 was manually annotated 1 time for cluster A1.
- Start number 11 was manually annotated 1 time for cluster A1.

Info for manual annotations of cluster BG:

- Start number 7 was manually annotated 2 times for cluster BG.
- Start number 8 was manually annotated 4 times for cluster BG.

Info for manual annotations of cluster BT:

- Start number 11 was manually annotated 1 time for cluster BT.

Info for manual annotations of cluster CB:

- Start number 5 was manually annotated 2 times for cluster CB.

Info for manual annotations of cluster CG:

- Start number 4 was manually annotated 2 times for cluster CG.

Gene Information:

Gene: Asis_39 Start: 31643, Stop: 31008, Start Num: 8

Candidate Starts for Asis_39:

(Start: 5 @31661 has 2 MA's), (Start: 8 @31643 has 4 MA's), (12, 31574), (14, 31517), (16, 31475), (17, 31469), (18, 31466), (21, 31418), (23, 31376), (27, 31337), (43, 31193), (44, 31187), (50, 31130), (51, 31109), (53, 31094),

Gene: BabyGotBac_40 Start: 31643, Stop: 31008, Start Num: 8

Candidate Starts for BabyGotBac_40:

(Start: 5 @31661 has 2 MA's), (Start: 8 @31643 has 4 MA's), (12, 31574), (14, 31517), (16, 31475), (17, 31469), (18, 31466), (21, 31418), (23, 31376), (27, 31337), (43, 31193), (44, 31187), (50, 31130), (51, 31109), (53, 31094),

Gene: BayC_39 Start: 31646, Stop: 31008, Start Num: 7

Candidate Starts for BayC_39:

(Start: 5 @31661 has 2 MA's), (Start: 7 @31646 has 2 MA's), (Start: 8 @31643 has 4 MA's), (Start: 10 @31583 has 1 MA's), (18, 31466), (21, 31418), (23, 31376), (27, 31337), (43, 31193), (44, 31187), (50, 31130), (51, 31109), (53, 31094),

Gene: Bimmel_19 Start: 12540, Stop: 11983, Start Num: 10

Candidate Starts for Bimmel_19:

(Start: 10 @12540 has 1 MA's), (Start: 11 @12537 has 2 MA's), (21, 12390), (22, 12366), (26, 12321), (27, 12309), (28, 12306), (29, 12288), (30, 12276), (32, 12270), (44, 12159), (48, 12132), (53, 12066),

Gene: Dorin_231 Start: 119103, Stop: 119795, Start Num: 4

Candidate Starts for Dorin_231:

(Start: 4 @119103 has 3 MA's), (9, 119127), (33, 119457), (34, 119466), (37, 119505), (39, 119535), (40, 119544), (44, 119616), (46, 119631), (49, 119646), (51, 119694), (53, 119709), (56, 119784),

Gene: Dreamboat_83 Start: 47449, Stop: 46793, Start Num: 6

Candidate Starts for Dreamboat_83:

(Start: 6 @47449 has 4 MA's), (Start: 10 @47374 has 1 MA's), (13, 47350), (25, 47161), (27, 47140), (28, 47137), (33, 47089), (41, 47008), (50, 46933), (51, 46912), (53, 46897), (54, 46834),

Gene: Francesca_232 Start: 119746, Stop: 120438, Start Num: 4

Candidate Starts for Francesca_232:

(Start: 4 @119746 has 3 MA's), (9, 119770), (33, 120100), (34, 120109), (37, 120148), (39, 120178), (40, 120187), (44, 120259), (46, 120274), (49, 120289), (51, 120337), (53, 120352), (56, 120427),

Gene: Grayson_225 Start: 110700, Stop: 111323, Start Num: 5

Candidate Starts for Grayson_225:

(Start: 5 @110700 has 2 MA's), (20, 110922), (33, 111051), (35, 111063), (44, 111147), (45, 111156), (49, 111177), (51, 111225), (53, 111240),

Gene: Jasper_82 Start: 47335, Stop: 46679, Start Num: 6

Candidate Starts for Jasper_82:

(Start: 6 @47335 has 4 MA's), (Start: 10 @47260 has 1 MA's), (13, 47236), (25, 47047), (27, 47026), (28, 47023), (33, 46975), (41, 46894), (50, 46819), (51, 46798), (53, 46783), (54, 46720),

Gene: Maih_38 Start: 31642, Stop: 31007, Start Num: 8

Candidate Starts for Maih_38:

(Start: 5 @31660 has 2 MA's), (Start: 8 @31642 has 4 MA's), (12, 31573), (14, 31516), (16, 31474), (17, 31468), (18, 31465), (21, 31417), (23, 31375), (27, 31336), (43, 31192), (44, 31186), (50, 31129), (51, 31108), (53, 31093),

Gene: Marcell_77 Start: 46764, Stop: 46087, Start Num: 4

Candidate Starts for Marcell_77:

(1, 47148), (2, 47004), (Start: 4 @46764 has 3 MA's), (Start: 7 @46746 has 2 MA's), (Start: 11 @46680 has 2 MA's), (12, 46674), (15, 46608), (17, 46581), (19, 46542), (23, 46473), (26, 46446), (27, 46434), (33, 46389), (36, 46374), (42, 46302), (47, 46254), (50, 46224), (51, 46203), (52, 46197), (55, 46119),

Gene: OnionKnight_47 Start: 32813, Stop: 33472, Start Num: 3

Candidate Starts for OnionKnight_47:

(Start: 3 @32813 has 1 MA's), (12, 32924), (13, 32939), (26, 33155), (51, 33362), (53, 33377),

Gene: Peregrin_219 Start: 110361, Stop: 110984, Start Num: 5

Candidate Starts for Peregrin_219:

(Start: 5 @110361 has 2 MA's), (20, 110583), (33, 110712), (35, 110724), (44, 110808), (45, 110817), (49, 110838), (51, 110886), (53, 110901),

Gene: PherrisBueller_82 Start: 46986, Stop: 46330, Start Num: 6

Candidate Starts for PherrisBueller_82:

(Start: 6 @46986 has 4 MA's), (Start: 10 @46911 has 1 MA's), (13, 46887), (25, 46698), (27, 46677), (28, 46674), (33, 46626), (41, 46545), (50, 46470), (51, 46449), (53, 46434), (54, 46371),

Gene: Rajelicia_84 Start: 50923, Stop: 50267, Start Num: 6

Candidate Starts for Rajelicia_84:

(Start: 6 @50923 has 4 MA's), (Start: 10 @50848 has 1 MA's), (13, 50824), (25, 50635), (27, 50614), (28, 50611), (33, 50563), (41, 50482), (50, 50407), (51, 50386), (53, 50371), (54, 50308),

Gene: Salete_39 Start: 31646, Stop: 31008, Start Num: 7

Candidate Starts for Salete_39:

(Start: 5 @31661 has 2 MA's), (Start: 7 @31646 has 2 MA's), (Start: 8 @31643 has 4 MA's), (Start: 10 @31583 has 1 MA's), (18, 31466), (21, 31418), (23, 31376), (27, 31337), (43, 31193), (44, 31187), (50,

31130), (51, 31109), (53, 31094),

Gene: Spooks_19 Start: 13193, Stop: 12639, Start Num: 11

Candidate Starts for Spooks_19:

(Start: 11 @13193 has 2 MA's), (21, 13046), (22, 13022), (26, 12977), (27, 12965), (28, 12962), (29, 12944), (32, 12926), (38, 12860), (44, 12815), (48, 12788), (50, 12758), (53, 12722),

Gene: Squee_84 Start: 49047, Stop: 48451, Start Num: 10

Candidate Starts for Squee_84:

(Start: 8 @49107 has 4 MA's), (Start: 10 @49047 has 1 MA's), (15, 48972), (17, 48945), (19, 48906), (23, 48837), (26, 48810), (27, 48798), (31, 48768), (33, 48753), (36, 48738), (42, 48666), (47, 48618), (50, 48588), (51, 48567), (52, 48561), (55, 48483),

Gene: Success_20 Start: 12404, Stop: 11850, Start Num: 11

Candidate Starts for Success_20:

(Start: 10 @12407 has 1 MA's), (Start: 11 @12404 has 2 MA's), (21, 12257), (22, 12233), (24, 12203), (26, 12188), (27, 12176), (28, 12173), (29, 12155), (30, 12143), (32, 12137), (44, 12026), (48, 11999), (50, 11969), (53, 11933),

Gene: TP1604_39 Start: 31643, Stop: 31008, Start Num: 8

Candidate Starts for TP1604_39:

(Start: 5 @31661 has 2 MA's), (Start: 8 @31643 has 4 MA's), (12, 31574), (14, 31517), (16, 31475), (17, 31469), (18, 31466), (21, 31418), (23, 31376), (27, 31337), (43, 31193), (44, 31187), (50, 31130), (51, 31109), (53, 31094),

Gene: TheloniousMonk_85 Start: 50510, Stop: 49917, Start Num: 11

Candidate Starts for TheloniousMonk_85:

(Start: 11 @50510 has 2 MA's), (12, 50504), (15, 50438), (17, 50411), (19, 50372), (23, 50303), (26, 50276), (27, 50264), (31, 50234), (33, 50219), (36, 50204), (47, 50084), (50, 50054), (51, 50033), (52, 50027), (55, 49949),