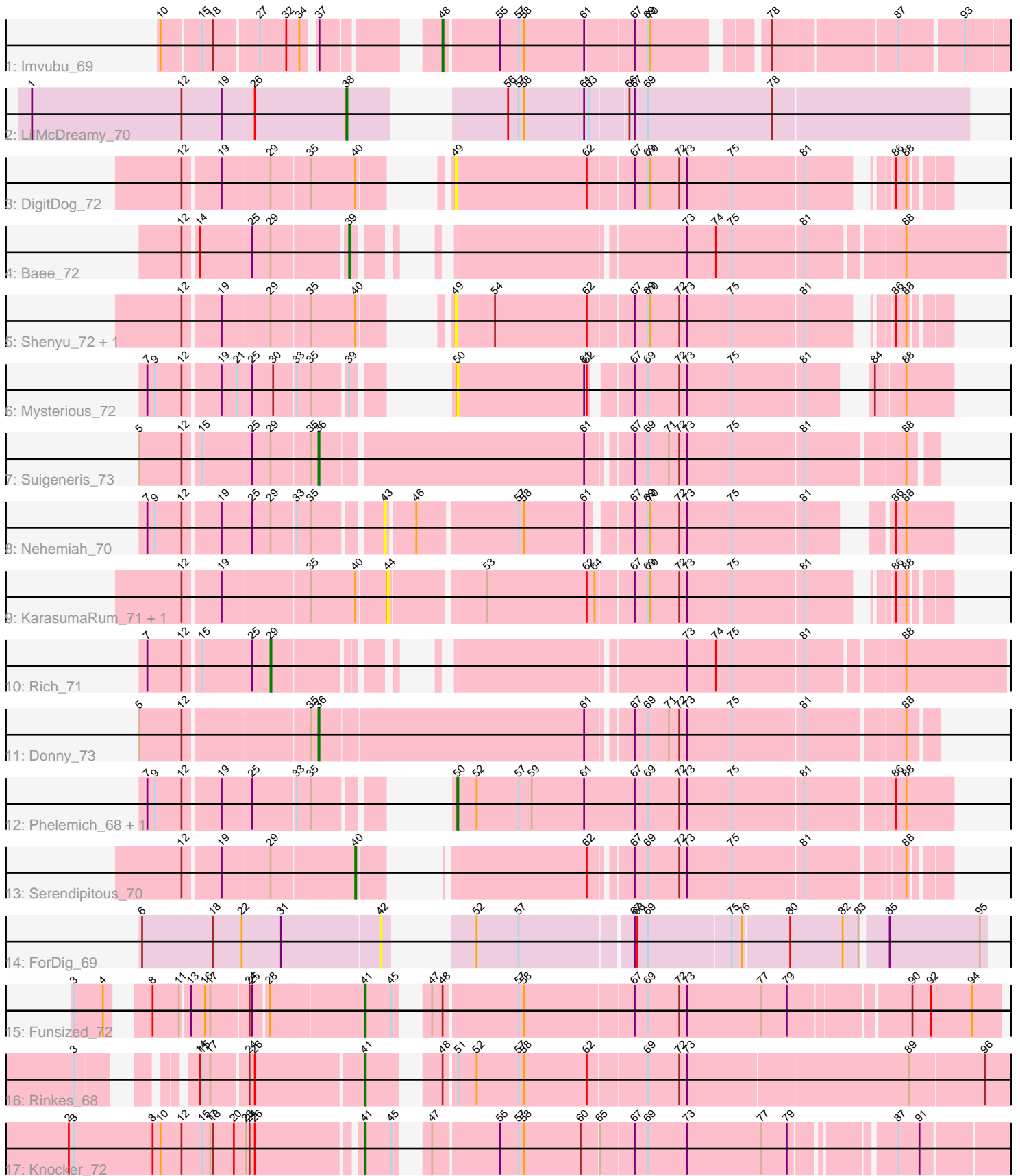


# Pham 216592



Note: Tracks are now grouped by subcluster and scaled. Switching in subcluster is indicated by changes in track color. Track scale is now set by default to display the region 30 bp upstream of start 1 to 30 bp downstream of the last possible start. If this default region is judged to be packed too tightly with annotated starts, the track will be further scaled to only show that region of the ORF with annotated starts. This action will be indicated by adding "Zoomed" to the title. For starts, yellow indicates the location of called starts comprised solely of Glimmer/GeneMark auto-annotations, green indicates the location of called starts with at least 1 manual gene annotation.

## Pham 216592 Report

This analysis was run 02/22/25 on database version 588.

Pham number 216592 has 20 members, 8 are drafts.

Phages represented in each track:

- Track 1 : Imvubu\_69
- Track 2 : LilMcDreamy\_70
- Track 3 : DigitDog\_72
- Track 4 : Bae\_72
- Track 5 : Shenyu\_72, Nangang\_71
- Track 6 : Mysterious\_72
- Track 7 : Suigeneris\_73
- Track 8 : Nehemiah\_70
- Track 9 : KarasumaRum\_71, StinkyVeggy\_71
- Track 10 : Rich\_71
- Track 11 : Donny\_73
- Track 12 : Phelemich\_68, Reprobate\_70
- Track 13 : Serendipitous\_70
- Track 14 : ForDig\_69
- Track 15 : Funsized\_72
- Track 16 : Rinkes\_68
- Track 17 : Knocker\_72

### ***Summary of Final Annotations (See graph section above for start numbers):***

The start number called the most often in the published annotations is 41, it was called in 3 of the 12 non-draft genes in the pham.

Genes that call this "Most Annotated" start:

- Funsized\_72, Knocker\_72, Rinkes\_68,

Genes that have the "Most Annotated" start but do not call it:

- 

Genes that do not have the "Most Annotated" start:

- Bae\_72, DigitDog\_72, Donny\_73, ForDig\_69, Imvubu\_69, KarasumaRum\_71, LilMcDreamy\_70, Mysterious\_72, Nangang\_71, Nehemiah\_70, Phelemich\_68, Reprobate\_70, Rich\_71, Serendipitous\_70, Shenyu\_72, StinkyVeggy\_71, Suigeneris\_73,

### Summary by start number:

#### Start 29:

- Found in 8 of 20 ( 40.0% ) of genes in pham
- Manual Annotations of this start: 1 of 12
- Called 12.5% of time when present
- Phage (with cluster) where this start called: Rich\_71 (B5),

#### Start 36:

- Found in 2 of 20 ( 10.0% ) of genes in pham
- Manual Annotations of this start: 2 of 12
- Called 100.0% of time when present
- Phage (with cluster) where this start called: Donny\_73 (B5), Suigeneris\_73 (B5),

#### Start 38:

- Found in 1 of 20 ( 5.0% ) of genes in pham
- Manual Annotations of this start: 1 of 12
- Called 100.0% of time when present
- Phage (with cluster) where this start called: LilMcDreamy\_70 (B12),

#### Start 39:

- Found in 2 of 20 ( 10.0% ) of genes in pham
- Manual Annotations of this start: 1 of 12
- Called 50.0% of time when present
- Phage (with cluster) where this start called: Bae\_72 (B5),

#### Start 40:

- Found in 6 of 20 ( 30.0% ) of genes in pham
- Manual Annotations of this start: 1 of 12
- Called 16.7% of time when present
- Phage (with cluster) where this start called: Serendipitous\_70 (B5),

#### Start 41:

- Found in 3 of 20 ( 15.0% ) of genes in pham
- Manual Annotations of this start: 3 of 12
- Called 100.0% of time when present
- Phage (with cluster) where this start called: Funsized\_72 (B9), Knocker\_72 (B9), Rinkes\_68 (B9),

#### Start 42:

- Found in 1 of 20 ( 5.0% ) of genes in pham
- No Manual Annotations of this start.
- Called 100.0% of time when present
- Phage (with cluster) where this start called: ForDig\_69 (B6),

#### Start 43:

- Found in 1 of 20 ( 5.0% ) of genes in pham
- No Manual Annotations of this start.
- Called 100.0% of time when present
- Phage (with cluster) where this start called: Nehemiah\_70 (B5),

#### Start 44:

- Found in 2 of 20 ( 10.0% ) of genes in pham
- No Manual Annotations of this start.
- Called 100.0% of time when present
- Phage (with cluster) where this start called: KarasumaRum\_71 (B5), StinkyVeggy\_71 (B5),

Start 48:

- Found in 3 of 20 ( 15.0% ) of genes in pham
- Manual Annotations of this start: 1 of 12
- Called 33.3% of time when present
- Phage (with cluster) where this start called: Imvubu\_69 (B10),

Start 49:

- Found in 3 of 20 ( 15.0% ) of genes in pham
- No Manual Annotations of this start.
- Called 100.0% of time when present
- Phage (with cluster) where this start called: DigitDog\_72 (B5), Nangang\_71 (B5), Shenyu\_72 (B5),

Start 50:

- Found in 3 of 20 ( 15.0% ) of genes in pham
- Manual Annotations of this start: 2 of 12
- Called 100.0% of time when present
- Phage (with cluster) where this start called: Mysterious\_72 (B5), Phelemich\_68 (B5), Reprobate\_70 (B5),

### **Summary by clusters:**

There are 5 clusters represented in this pham: B5, B6, B12, B9, B10,

Info for manual annotations of cluster B10:

- Start number 48 was manually annotated 1 time for cluster B10.

Info for manual annotations of cluster B12:

- Start number 38 was manually annotated 1 time for cluster B12.

Info for manual annotations of cluster B5:

- Start number 29 was manually annotated 1 time for cluster B5.
- Start number 36 was manually annotated 2 times for cluster B5.
- Start number 39 was manually annotated 1 time for cluster B5.
- Start number 40 was manually annotated 1 time for cluster B5.
- Start number 50 was manually annotated 2 times for cluster B5.

Info for manual annotations of cluster B9:

- Start number 41 was manually annotated 3 times for cluster B9.

### **Gene Information:**

Gene: Baee\_72 Start: 60813, Stop: 61436, Start Num: 39

Candidate Starts for Baee\_72:

(12, 60642), (14, 60657), (25, 60714), (Start: 29 @60735 has 1 MA's), (Start: 39 @60813 has 1 MA's), (73, 61101), (74, 61134), (75, 61152), (81, 61227), (88, 61326),

Gene: DigitDog\_72 Start: 59928, Stop: 60428, Start Num: 49

Candidate Starts for DigitDog\_72:

(12, 59703), (19, 59742), (Start: 29 @59796 has 1 MA's), (35, 59838), (Start: 40 @59886 has 1 MA's), (49, 59928), (62, 60075), (67, 60123), (69, 60138), (70, 60141), (72, 60174), (73, 60183), (75, 60234), (81, 60309), (86, 60378), (88, 60390),

Gene: Donny\_73 Start: 59741, Stop: 60397, Start Num: 36

Candidate Starts for Donny\_73:

(5, 59549), (12, 59597), (35, 59732), (Start: 36 @59741 has 2 MA's), (61, 60035), (67, 60077), (69, 60092), (71, 60116), (72, 60128), (73, 60137), (75, 60188), (81, 60263), (88, 60368),

Gene: ForDig\_69 Start: 58743, Stop: 59336, Start Num: 42

Candidate Starts for ForDig\_69:

(6, 58476), (18, 58557), (22, 58590), (31, 58635), (42, 58743), (52, 58782), (57, 58830), (67, 58953), (68, 58956), (69, 58968), (75, 59061), (76, 59073), (80, 59124), (82, 59181), (83, 59199), (85, 59226), (95, 59328),

Gene: Funsized\_72 Start: 61973, Stop: 62629, Start Num: 41

Candidate Starts for Funsized\_72:

(3, 61688), (4, 61721), (8, 61751), (11, 61781), (13, 61790), (16, 61805), (17, 61811), (24, 61850), (25, 61853), (28, 61868), (Start: 41 @61973 has 3 MA's), (45, 62003), (47, 62021), (Start: 48 @62033 has 1 MA's), (57, 62114), (58, 62120), (67, 62240), (69, 62255), (72, 62291), (73, 62300), (77, 62384), (79, 62411), (90, 62534), (92, 62555), (94, 62600),

Gene: Imvubu\_69 Start: 58708, Stop: 59286, Start Num: 48

Candidate Starts for Imvubu\_69:

(10, 58453), (15, 58495), (18, 58507), (27, 58552), (32, 58582), (34, 58597), (37, 58609), (Start: 48 @58708 has 1 MA's), (55, 58768), (57, 58789), (58, 58795), (61, 58864), (67, 58915), (69, 58930), (70, 58933), (78, 59041), (87, 59170), (93, 59236),

Gene: KarasumaRum\_71 Start: 59737, Stop: 60303, Start Num: 44

Candidate Starts for KarasumaRum\_71:

(12, 59521), (19, 59560), (35, 59656), (Start: 40 @59704 has 1 MA's), (44, 59737), (53, 59836), (62, 59950), (64, 59959), (67, 59998), (69, 60013), (70, 60016), (72, 60049), (73, 60058), (75, 60109), (81, 60184), (86, 60253), (88, 60265),

Gene: Knocker\_72 Start: 61176, Stop: 61832, Start Num: 41

Candidate Starts for Knocker\_72:

(2, 60855), (3, 60861), (8, 60951), (10, 60960), (12, 60984), (15, 61008), (17, 61017), (18, 61020), (20, 61044), (23, 61056), (24, 61059), (26, 61065), (Start: 41 @61176 has 3 MA's), (45, 61206), (47, 61224), (55, 61296), (57, 61317), (58, 61323), (60, 61386), (65, 61404), (67, 61440), (69, 61455), (73, 61500), (77, 61584), (79, 61611), (87, 61707), (91, 61731),

Gene: LilMcDreamy\_70 Start: 59640, Stop: 60260, Start Num: 38

Candidate Starts for LilMcDreamy\_70:

(1, 59286), (12, 59457), (19, 59502), (26, 59538), (Start: 38 @59640 has 1 MA's), (56, 59748), (57, 59760), (58, 59766), (61, 59835), (63, 59841), (66, 59880), (67, 59886), (69, 59901), (78, 60042),

Gene: Mysterious\_72 Start: 59836, Stop: 60333, Start Num: 50

Candidate Starts for Mysterious\_72:

(7, 59590), (9, 59599), (12, 59629), (19, 59668), (21, 59686), (25, 59701), (30, 59725), (33, 59749), (35, 59764), (Start: 39 @59800 has 1 MA's), (Start: 50 @59836 has 2 MA's), (61, 59980), (62, 59983), (67, 60019), (69, 60034), (72, 60070), (73, 60079), (75, 60130), (81, 60205), (84, 60250), (88, 60280),

Gene: Nangang\_71 Start: 59924, Stop: 60454, Start Num: 49

Candidate Starts for Nangang\_71:

(12, 59699), (19, 59738), (Start: 29 @59792 has 1 MA's), (35, 59834), (Start: 40 @59882 has 1 MA's), (49, 59924), (54, 59966), (62, 60071), (67, 60119), (69, 60134), (70, 60137), (72, 60170), (73, 60179), (75, 60230), (81, 60305), (86, 60392), (88, 60404),

Gene: Nehemiah\_70 Start: 59668, Stop: 60234, Start Num: 43

Candidate Starts for Nehemiah\_70:

(7, 59428), (9, 59437), (12, 59467), (19, 59506), (25, 59539), (Start: 29 @59560 has 1 MA's), (33, 59587), (35, 59602), (43, 59668), (46, 59698), (57, 59806), (58, 59812), (61, 59881), (67, 59923), (69, 59938), (70, 59941), (72, 59974), (73, 59983), (75, 60034), (81, 60109), (86, 60169), (88, 60181),

Gene: Phelemich\_68 Start: 59668, Stop: 60213, Start Num: 50

Candidate Starts for Phelemich\_68:

(7, 59422), (9, 59431), (12, 59461), (19, 59500), (25, 59533), (33, 59581), (35, 59596), (Start: 50 @59668 has 2 MA's), (52, 59689), (57, 59737), (59, 59752), (61, 59812), (67, 59869), (69, 59884), (72, 59920), (73, 59929), (75, 59980), (81, 60055), (86, 60148), (88, 60160),

Gene: Reprobate\_70 Start: 59673, Stop: 60218, Start Num: 50

Candidate Starts for Reprobate\_70:

(7, 59427), (9, 59436), (12, 59466), (19, 59505), (25, 59538), (33, 59586), (35, 59601), (Start: 50 @59673 has 2 MA's), (52, 59694), (57, 59742), (59, 59757), (61, 59817), (67, 59874), (69, 59889), (72, 59925), (73, 59934), (75, 59985), (81, 60060), (86, 60153), (88, 60165),

Gene: Rich\_71 Start: 60783, Stop: 61481, Start Num: 29

Candidate Starts for Rich\_71:

(7, 60651), (12, 60690), (15, 60708), (25, 60762), (Start: 29 @60783 has 1 MA's), (73, 61146), (74, 61179), (75, 61197), (81, 61272), (88, 61371),

Gene: Rinkes\_68 Start: 59532, Stop: 60221, Start Num: 41

Candidate Starts for Rinkes\_68:

(3, 59274), (14, 59358), (15, 59361), (17, 59370), (24, 59406), (26, 59412), (Start: 41 @59532 has 3 MA's), (Start: 48 @59592 has 1 MA's), (51, 59604), (52, 59625), (57, 59673), (58, 59679), (62, 59748), (69, 59811), (72, 59847), (73, 59856), (89, 60099), (96, 60183),

Gene: Serendipitous\_70 Start: 59224, Stop: 59772, Start Num: 40

Candidate Starts for Serendipitous\_70:

(12, 59041), (19, 59080), (Start: 29 @59134 has 1 MA's), (Start: 40 @59224 has 1 MA's), (62, 59407), (67, 59446), (69, 59461), (72, 59497), (73, 59506), (75, 59557), (81, 59632), (88, 59734),

Gene: Shenyu\_72 Start: 60293, Stop: 60793, Start Num: 49

Candidate Starts for Shenyu\_72:

(12, 60068), (19, 60107), (Start: 29 @60161 has 1 MA's), (35, 60203), (Start: 40 @60251 has 1 MA's), (49, 60293), (54, 60335), (62, 60440), (67, 60488), (69, 60503), (70, 60506), (72, 60539), (73, 60548), (75, 60599), (81, 60674), (86, 60743), (88, 60755),

Gene: StinkyVeggy\_71 Start: 59737, Stop: 60303, Start Num: 44

Candidate Starts for StinkyVeggy\_71:

(12, 59521), (19, 59560), (35, 59656), (Start: 40 @59704 has 1 MA's), (44, 59737), (53, 59836), (62, 59950), (64, 59959), (67, 59998), (69, 60013), (70, 60016), (72, 60049), (73, 60058), (75, 60109), (81, 60184), (86, 60253), (88, 60265),

Gene: Suigeneris\_73 Start: 59932, Stop: 60579, Start Num: 36

Candidate Starts for Suigeneris\_73:

(5, 59740), (12, 59788), (15, 59806), (25, 59860), (Start: 29 @59881 has 1 MA's), (35, 59923), (Start: 36 @59932 has 2 MA's), (61, 60220), (67, 60262), (69, 60277), (71, 60301), (72, 60313), (73, 60322), (75, 60373), (81, 60448), (88, 60553),