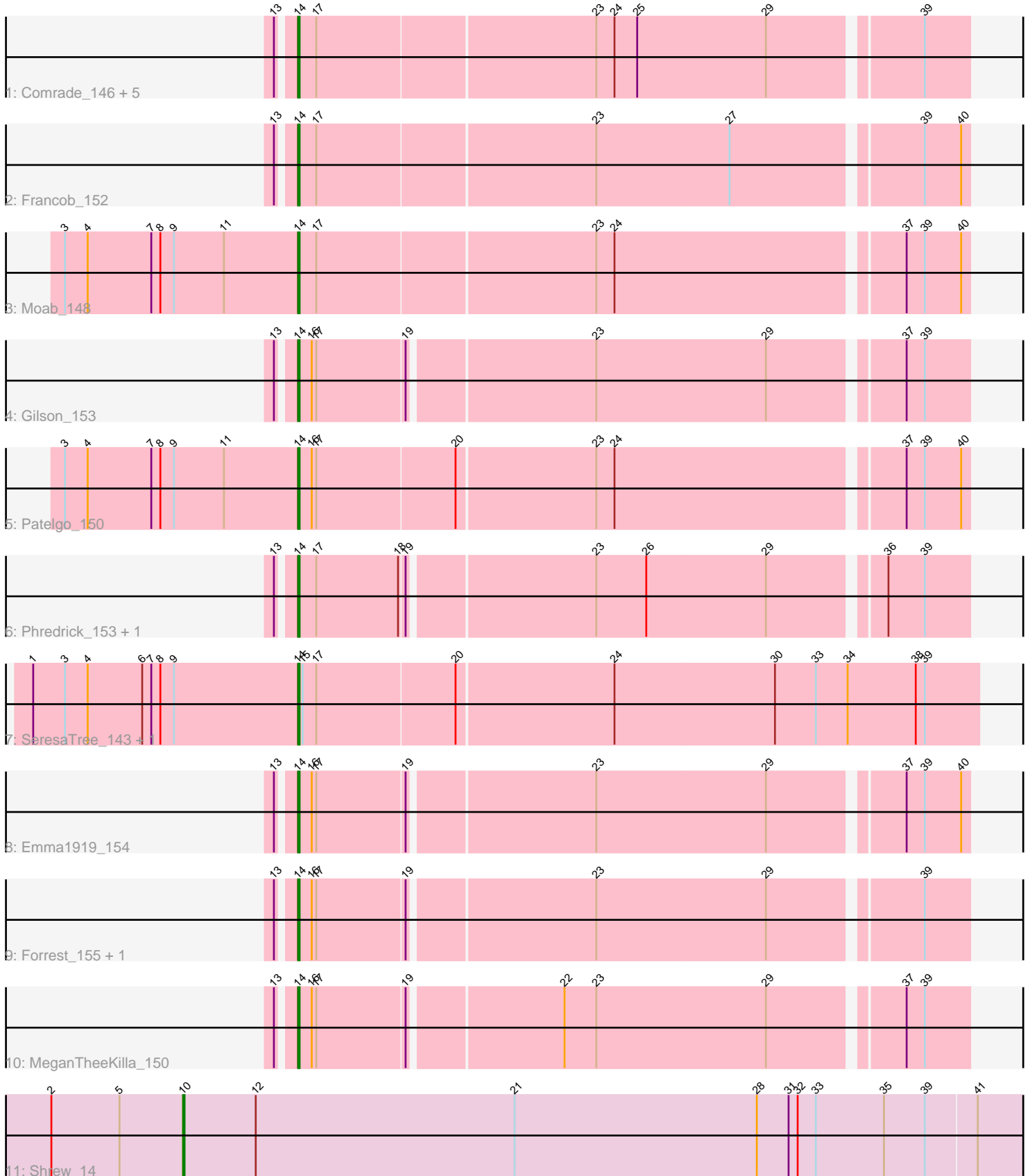


Pham 216594



Note: Tracks are now grouped by subcluster and scaled. Switching in subcluster is indicated by changes in track color. Track scale is now set by default to display the region 30 bp upstream of start 1 to 30 bp downstream of the last possible start. If this default region is judged to be packed too tightly with annotated starts, the track will be further scaled to only show that region of the ORF with annotated starts. This action will be indicated by adding "Zoomed" to the title. For starts, yellow indicates the location of called starts comprised solely of Glimmer/GeneMark auto-annotations, green indicates the location of called starts with at least 1 manual gene annotation.

Pham 216594 Report

This analysis was run 02/22/25 on database version 588.

Pham number 216594 has 19 members, 2 are drafts.

Phages represented in each track:

- Track 1 : Comrade_146, SparkleGoddess_148, Karp_143, Westy_150, Stigma_147, Belfort_149
- Track 2 : Francob_152
- Track 3 : Moab_148
- Track 4 : Gilson_153
- Track 5 : Patelgo_150
- Track 6 : Phredrick_153, Kenrey_156
- Track 7 : SeresaTree_143, Faust_142
- Track 8 : Emma1919_154
- Track 9 : Forrest_155, Jada_152
- Track 10 : MeganTheeKilla_150
- Track 11 : Shrew_14

Summary of Final Annotations (See graph section above for start numbers):

The start number called the most often in the published annotations is 14, it was called in 16 of the 17 non-draft genes in the pham.

Genes that call this "Most Annotated" start:

- Belfort_149, Comrade_146, Emma1919_154, Faust_142, Forrest_155, Francob_152, Gilson_153, Jada_152, Karp_143, Kenrey_156, MeganTheeKilla_150, Moab_148, Patelgo_150, Phredrick_153, SeresaTree_143, SparkleGoddess_148, Stigma_147, Westy_150,

Genes that have the "Most Annotated" start but do not call it:

-

Genes that do not have the "Most Annotated" start:

- Shrew_14,

Summary by start number:

Start 10:

- Found in 1 of 19 (5.3%) of genes in pham

- Manual Annotations of this start: 1 of 17
- Called 100.0% of time when present
- Phage (with cluster) where this start called: Shrew_14 (singleton),

Start 14:

- Found in 18 of 19 (94.7%) of genes in pham
- Manual Annotations of this start: 16 of 17
- Called 100.0% of time when present
- Phage (with cluster) where this start called: Belfort_149 (BK1), Comrade_146 (BK1), Emma1919_154 (BK1), Faust_142 (BK1), Forrest_155 (BK1), Francob_152 (BK1), Gilson_153 (BK1), Jada_152 (BK1), Karp_143 (BK1), Kenrey_156 (BK1), MeganTheeKilla_150 (BK1), Moab_148 (BK1), Patelgo_150 (BK1), Phredrick_153 (BK1), SeresaTree_143 (BK1), SparkleGoddess_148 (BK1), Stigma_147 (BK1), Westy_150 (BK1),

Summary by clusters:

There are 2 clusters represented in this pham: singleton, BK1,

Info for manual annotations of cluster BK1:

- Start number 14 was manually annotated 16 times for cluster BK1.

Gene Information:

Gene: Belfort_149 Start: 84378, Stop: 84803, Start Num: 14

Candidate Starts for Belfort_149:

(13, 84369), (Start: 14 @84378 has 16 MA's), (17, 84390), (23, 84570), (24, 84582), (25, 84597), (29, 84681), (39, 84774),

Gene: Comrade_146 Start: 84577, Stop: 85002, Start Num: 14

Candidate Starts for Comrade_146:

(13, 84568), (Start: 14 @84577 has 16 MA's), (17, 84589), (23, 84769), (24, 84781), (25, 84796), (29, 84880), (39, 84973),

Gene: Emma1919_154 Start: 83995, Stop: 84414, Start Num: 14

Candidate Starts for Emma1919_154:

(13, 83986), (Start: 14 @83995 has 16 MA's), (16, 84004), (17, 84007), (19, 84064), (23, 84181), (29, 84292), (37, 84373), (39, 84385), (40, 84409),

Gene: Faust_142 Start: 83595, Stop: 84038, Start Num: 14

Candidate Starts for Faust_142:

(1, 83421), (3, 83442), (4, 83457), (6, 83493), (7, 83499), (8, 83505), (9, 83514), (Start: 14 @83595 has 16 MA's), (15, 83598), (17, 83607), (20, 83697), (24, 83799), (30, 83904), (33, 83931), (34, 83952), (38, 83997), (39, 84003),

Gene: Forrest_155 Start: 85089, Stop: 85508, Start Num: 14

Candidate Starts for Forrest_155:

(13, 85080), (Start: 14 @85089 has 16 MA's), (16, 85098), (17, 85101), (19, 85158), (23, 85275), (29, 85386), (39, 85479),

Gene: Francob_152 Start: 84510, Stop: 84935, Start Num: 14

Candidate Starts for Francob_152:

(13, 84501), (Start: 14 @84510 has 16 MA's), (17, 84522), (23, 84702), (27, 84789), (39, 84906), (40, 84930),

Gene: Gilson_153 Start: 83957, Stop: 84376, Start Num: 14

Candidate Starts for Gilson_153:

(13, 83948), (Start: 14 @83957 has 16 MA's), (16, 83966), (17, 83969), (19, 84026), (23, 84143), (29, 84254), (37, 84335), (39, 84347),

Gene: Jada_152 Start: 83786, Stop: 84205, Start Num: 14

Candidate Starts for Jada_152:

(13, 83777), (Start: 14 @83786 has 16 MA's), (16, 83795), (17, 83798), (19, 83855), (23, 83972), (29, 84083), (39, 84176),

Gene: Karp_143 Start: 83805, Stop: 84230, Start Num: 14

Candidate Starts for Karp_143:

(13, 83796), (Start: 14 @83805 has 16 MA's), (17, 83817), (23, 83997), (24, 84009), (25, 84024), (29, 84108), (39, 84201),

Gene: Kenrey_156 Start: 85116, Stop: 85535, Start Num: 14

Candidate Starts for Kenrey_156:

(13, 85107), (Start: 14 @85116 has 16 MA's), (17, 85128), (18, 85182), (19, 85185), (23, 85302), (26, 85335), (29, 85413), (36, 85482), (39, 85506),

Gene: MeganTheeKilla_150 Start: 83308, Stop: 83727, Start Num: 14

Candidate Starts for MeganTheeKilla_150:

(13, 83299), (Start: 14 @83308 has 16 MA's), (16, 83317), (17, 83320), (19, 83377), (22, 83473), (23, 83494), (29, 83605), (37, 83686), (39, 83698),

Gene: Moab_148 Start: 85468, Stop: 85893, Start Num: 14

Candidate Starts for Moab_148:

(3, 85315), (4, 85330), (7, 85372), (8, 85378), (9, 85387), (11, 85420), (Start: 14 @85468 has 16 MA's), (17, 85480), (23, 85660), (24, 85672), (37, 85852), (39, 85864), (40, 85888),

Gene: Patelgo_150 Start: 86160, Stop: 86585, Start Num: 14

Candidate Starts for Patelgo_150:

(3, 86007), (4, 86022), (7, 86064), (8, 86070), (9, 86079), (11, 86112), (Start: 14 @86160 has 16 MA's), (16, 86169), (17, 86172), (20, 86262), (23, 86352), (24, 86364), (37, 86544), (39, 86556), (40, 86580),

Gene: Phredrick_153 Start: 83460, Stop: 83879, Start Num: 14

Candidate Starts for Phredrick_153:

(13, 83451), (Start: 14 @83460 has 16 MA's), (17, 83472), (18, 83526), (19, 83529), (23, 83646), (26, 83679), (29, 83757), (36, 83826), (39, 83850),

Gene: SeresaTree_143 Start: 82977, Stop: 83420, Start Num: 14

Candidate Starts for SeresaTree_143:

(1, 82803), (3, 82824), (4, 82839), (6, 82875), (7, 82881), (8, 82887), (9, 82896), (Start: 14 @82977 has 16 MA's), (15, 82980), (17, 82989), (20, 83079), (24, 83181), (30, 83286), (33, 83313), (34, 83334), (38, 83379), (39, 83385),

Gene: Shrew_14 Start: 6086, Stop: 6655, Start Num: 10

Candidate Starts for Shrew_14:

(2, 5999), (5, 6044), (Start: 10 @6086 has 1 MA's), (12, 6134), (21, 6305), (28, 6464), (31, 6485), (32, 6491), (33, 6503), (35, 6548), (39, 6575), (41, 6608),

Gene: SparkleGoddess_148 Start: 84624, Stop: 85049, Start Num: 14

Candidate Starts for SparkleGoddess_148:

(13, 84615), (Start: 14 @84624 has 16 MA's), (17, 84636), (23, 84816), (24, 84828), (25, 84843), (29, 84927), (39, 85020),

Gene: Stigma_147 Start: 85022, Stop: 85447, Start Num: 14

Candidate Starts for Stigma_147:

(13, 85013), (Start: 14 @85022 has 16 MA's), (17, 85034), (23, 85214), (24, 85226), (25, 85241), (29, 85325), (39, 85418),

Gene: Westy_150 Start: 85337, Stop: 85762, Start Num: 14

Candidate Starts for Westy_150:

(13, 85328), (Start: 14 @85337 has 16 MA's), (17, 85349), (23, 85529), (24, 85541), (25, 85556), (29, 85640), (39, 85733),