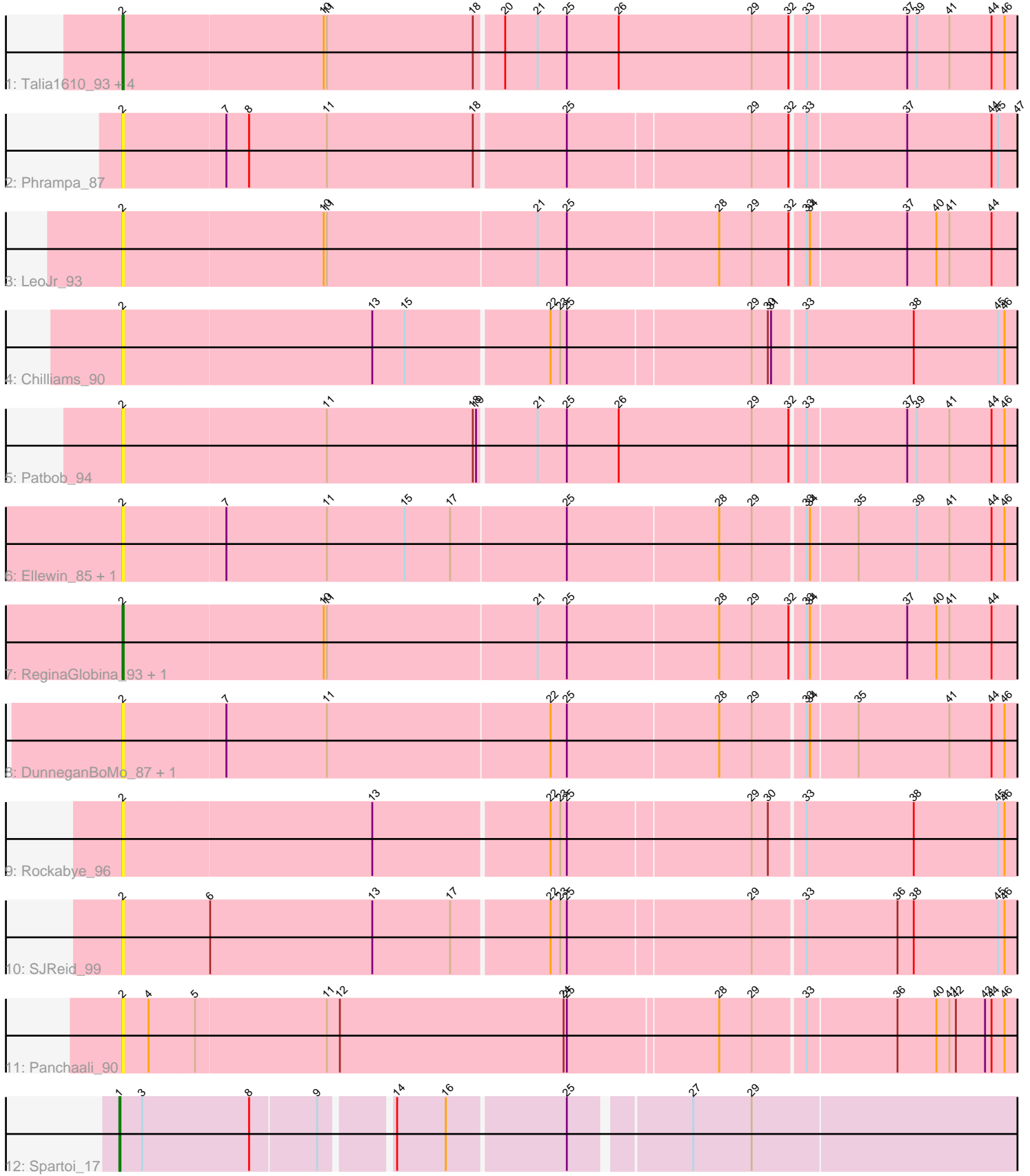


# Zoomed Pham 216601



Note: Tracks are now grouped by subcluster and scaled. Switching in subcluster is indicated by changes in track color. Track scale is now set by default to display the region 30 bp upstream of start 1 to 30 bp downstream of the last possible start. If this default region is judged to be packed too tightly with annotated starts, the track will be further scaled to only show that region of the ORF with annotated starts. This action will be indicated by adding "Zoomed" to the title. For starts, yellow indicates the location of called starts comprised solely of Glimmer/GeneMark auto-annotations, green indicates the location of called starts with at least 1 manual gene annotation.

## Pham 216601 Report

This analysis was run 02/22/25 on database version 588.

Pham number 216601 has 19 members, 14 are drafts.

Phages represented in each track:

- Track 1 : Talia1610\_93, Mimi\_93, Racecar\_94, Bloom\_97, GoldenEssence\_82
- Track 2 : Phrampa\_87
- Track 3 : LeoJr\_93
- Track 4 : Chilliams\_90
- Track 5 : Patbob\_94
- Track 6 : Ellewin\_85, KSunshine22\_88
- Track 7 : ReginaGlobina\_93, Atuin\_88
- Track 8 : DunneganBoMo\_87, WaddleDee\_87
- Track 9 : Rockabye\_96
- Track 10 : SJReid\_99
- Track 11 : Panchaali\_90
- Track 12 : Spartoi\_17

### ***Summary of Final Annotations (See graph section above for start numbers):***

The start number called the most often in the published annotations is 2, it was called in 4 of the 5 non-draft genes in the pham.

Genes that call this "Most Annotated" start:

- Atuin\_88, Bloom\_97, Chilliams\_90, DunneganBoMo\_87, Ellewin\_85, GoldenEssence\_82, KSunshine22\_88, LeoJr\_93, Mimi\_93, Panchaali\_90, Patbob\_94, Phrampa\_87, Racecar\_94, ReginaGlobina\_93, Rockabye\_96, SJReid\_99, Talia1610\_93, WaddleDee\_87,

Genes that have the "Most Annotated" start but do not call it:

- 

Genes that do not have the "Most Annotated" start:

- Spartoi\_17,

### **Summary by start number:**

Start 1:

- Found in 1 of 19 ( 5.3% ) of genes in pham

- Manual Annotations of this start: 1 of 5
- Called 100.0% of time when present
- Phage (with cluster) where this start called: Spartoi\_17 (singleton),

#### Start 2:

- Found in 18 of 19 ( 94.7% ) of genes in pham
- Manual Annotations of this start: 4 of 5
- Called 100.0% of time when present
- Phage (with cluster) where this start called: Atuin\_88 (FC), Bloom\_97 (FC), Chilliams\_90 (FC), DunneganBoMo\_87 (FC), Ellewin\_85 (FC), GoldenEssence\_82 (FC), KSunshine22\_88 (FC), LeoJr\_93 (FC), Mimi\_93 (FC), Panchaali\_90 (FC), Patbob\_94 (FC), Phrampa\_87 (FC), Racecar\_94 (FC), ReginaGlobina\_93 (FC), Rockabye\_96 (FC), SJReid\_99 (FC), Talia1610\_93 (FC), WaddleDee\_87 (FC),

#### Summary by clusters:

There are 2 clusters represented in this pham: singleton, FC,

Info for manual annotations of cluster FC:

- Start number 2 was manually annotated 4 times for cluster FC.

#### **Gene Information:**

Gene: Atuin\_88 Start: 61731, Stop: 62849, Start Num: 2

Candidate Starts for Atuin\_88:

(Start: 2 @61731 has 4 MA's), (10, 61914), (11, 61917), (21, 62109), (25, 62136), (28, 62274), (29, 62304), (32, 62337), (33, 62349), (34, 62352), (37, 62439), (40, 62466), (41, 62478), (44, 62517), (50, 62595), (55, 62736), (58, 62826),

Gene: Bloom\_97 Start: 62603, Stop: 63721, Start Num: 2

Candidate Starts for Bloom\_97:

(Start: 2 @62603 has 4 MA's), (10, 62786), (11, 62789), (18, 62924), (20, 62948), (21, 62978), (25, 63005), (26, 63053), (29, 63176), (32, 63209), (33, 63221), (37, 63311), (39, 63320), (41, 63350), (44, 63389), (46, 63401), (51, 63488), (52, 63509), (58, 63698),

Gene: Chilliams\_90 Start: 62997, Stop: 64109, Start Num: 2

Candidate Starts for Chilliams\_90:

(Start: 2 @62997 has 4 MA's), (13, 63225), (15, 63255), (22, 63384), (23, 63393), (25, 63399), (29, 63564), (30, 63579), (31, 63582), (33, 63609), (38, 63708), (45, 63786), (46, 63792), (49, 63828), (56, 64020), (57, 64041), (58, 64086),

Gene: DunneganBoMo\_87 Start: 58597, Stop: 59715, Start Num: 2

Candidate Starts for DunneganBoMo\_87:

(Start: 2 @58597 has 4 MA's), (7, 58690), (11, 58783), (22, 58987), (25, 59002), (28, 59140), (29, 59170), (33, 59215), (34, 59218), (35, 59260), (41, 59344), (44, 59383), (46, 59395), (58, 59692),

Gene: Ellewin\_85 Start: 58177, Stop: 59295, Start Num: 2

Candidate Starts for Ellewin\_85:

(Start: 2 @58177 has 4 MA's), (7, 58270), (11, 58363), (15, 58435), (17, 58477), (25, 58582), (28, 58720), (29, 58750), (33, 58795), (34, 58798), (35, 58840), (39, 58894), (41, 58924), (44, 58963), (46, 58975), (58, 59272),

Gene: GoldenEssence\_82 Start: 56399, Stop: 57517, Start Num: 2

Candidate Starts for GoldenEssence\_82:

(Start: 2 @56399 has 4 MA's), (10, 56582), (11, 56585), (18, 56720), (20, 56744), (21, 56774), (25, 56801), (26, 56849), (29, 56972), (32, 57005), (33, 57017), (37, 57107), (39, 57116), (41, 57146), (44, 57185), (46, 57197), (51, 57284), (52, 57305), (58, 57494),

Gene: KSunshine22\_88 Start: 59810, Stop: 60928, Start Num: 2

Candidate Starts for KSunshine22\_88:

(Start: 2 @59810 has 4 MA's), (7, 59903), (11, 59996), (15, 60068), (17, 60110), (25, 60215), (28, 60353), (29, 60383), (33, 60428), (34, 60431), (35, 60473), (39, 60527), (41, 60557), (44, 60596), (46, 60608), (58, 60905),

Gene: LeoJr\_93 Start: 61859, Stop: 62977, Start Num: 2

Candidate Starts for LeoJr\_93:

(Start: 2 @61859 has 4 MA's), (10, 62042), (11, 62045), (21, 62237), (25, 62264), (28, 62402), (29, 62432), (32, 62465), (33, 62477), (34, 62480), (37, 62567), (40, 62594), (41, 62606), (44, 62645), (50, 62723), (55, 62864), (58, 62954),

Gene: Mimi\_93 Start: 61950, Stop: 63068, Start Num: 2

Candidate Starts for Mimi\_93:

(Start: 2 @61950 has 4 MA's), (10, 62133), (11, 62136), (18, 62271), (20, 62295), (21, 62325), (25, 62352), (26, 62400), (29, 62523), (32, 62556), (33, 62568), (37, 62658), (39, 62667), (41, 62697), (44, 62736), (46, 62748), (51, 62835), (52, 62856), (58, 63045),

Gene: Panchaali\_90 Start: 59690, Stop: 60808, Start Num: 2

Candidate Starts for Panchaali\_90:

(Start: 2 @59690 has 4 MA's), (4, 59714), (5, 59756), (11, 59876), (12, 59888), (24, 60095), (25, 60098), (28, 60233), (29, 60263), (33, 60308), (36, 60389), (40, 60425), (41, 60437), (42, 60443), (43, 60470), (44, 60476), (46, 60488), (49, 60524), (58, 60785),

Gene: Patbob\_94 Start: 62822, Stop: 63940, Start Num: 2

Candidate Starts for Patbob\_94:

(Start: 2 @62822 has 4 MA's), (11, 63008), (18, 63143), (19, 63146), (21, 63197), (25, 63224), (26, 63272), (29, 63395), (32, 63428), (33, 63440), (37, 63530), (39, 63539), (41, 63569), (44, 63608), (46, 63620), (51, 63707), (52, 63728), (58, 63917),

Gene: Phrampa\_87 Start: 60127, Stop: 61239, Start Num: 2

Candidate Starts for Phrampa\_87:

(Start: 2 @60127 has 4 MA's), (7, 60220), (8, 60241), (11, 60313), (18, 60448), (25, 60529), (29, 60694), (32, 60727), (33, 60739), (37, 60829), (44, 60907), (45, 60913), (47, 60931), (48, 60952), (52, 61027), (54, 61063), (58, 61216),

Gene: Racecar\_94 Start: 62603, Stop: 63721, Start Num: 2

Candidate Starts for Racecar\_94:

(Start: 2 @62603 has 4 MA's), (10, 62786), (11, 62789), (18, 62924), (20, 62948), (21, 62978), (25, 63005), (26, 63053), (29, 63176), (32, 63209), (33, 63221), (37, 63311), (39, 63320), (41, 63350), (44, 63389), (46, 63401), (51, 63488), (52, 63509), (58, 63698),

Gene: ReginaGlobina\_93 Start: 62612, Stop: 63730, Start Num: 2

Candidate Starts for ReginaGlobina\_93:

(Start: 2 @62612 has 4 MA's), (10, 62795), (11, 62798), (21, 62990), (25, 63017), (28, 63155), (29, 63185), (32, 63218), (33, 63230), (34, 63233), (37, 63320), (40, 63347), (41, 63359), (44, 63398), (50,

63476), (55, 63617), (58, 63707),

Gene: Rockabye\_96 Start: 63356, Stop: 64468, Start Num: 2

Candidate Starts for Rockabye\_96:

(Start: 2 @63356 has 4 MA's), (13, 63584), (22, 63743), (23, 63752), (25, 63758), (29, 63923), (30, 63938), (33, 63968), (38, 64067), (45, 64145), (46, 64151), (56, 64379), (57, 64400), (58, 64445),

Gene: SJReid\_99 Start: 62409, Stop: 63521, Start Num: 2

Candidate Starts for SJReid\_99:

(Start: 2 @62409 has 4 MA's), (6, 62487), (13, 62637), (17, 62709), (22, 62796), (23, 62805), (25, 62811), (29, 62976), (33, 63021), (36, 63105), (38, 63120), (45, 63198), (46, 63204), (52, 63309), (56, 63432), (57, 63453), (58, 63498),

Gene: Spartoi\_17 Start: 13760, Stop: 14860, Start Num: 1

Candidate Starts for Spartoi\_17:

(Start: 1 @13760 has 1 MA's), (3, 13781), (8, 13880), (9, 13940), (14, 13997), (16, 14042), (25, 14147), (27, 14249), (29, 14303), (53, 14660), (57, 14789),

Gene: Talia1610\_93 Start: 61968, Stop: 63086, Start Num: 2

Candidate Starts for Talia1610\_93:

(Start: 2 @61968 has 4 MA's), (10, 62151), (11, 62154), (18, 62289), (20, 62313), (21, 62343), (25, 62370), (26, 62418), (29, 62541), (32, 62574), (33, 62586), (37, 62676), (39, 62685), (41, 62715), (44, 62754), (46, 62766), (51, 62853), (52, 62874), (58, 63063),

Gene: WaddleDee\_87 Start: 58452, Stop: 59570, Start Num: 2

Candidate Starts for WaddleDee\_87:

(Start: 2 @58452 has 4 MA's), (7, 58545), (11, 58638), (22, 58842), (25, 58857), (28, 58995), (29, 59025), (33, 59070), (34, 59073), (35, 59115), (41, 59199), (44, 59238), (46, 59250), (58, 59547),