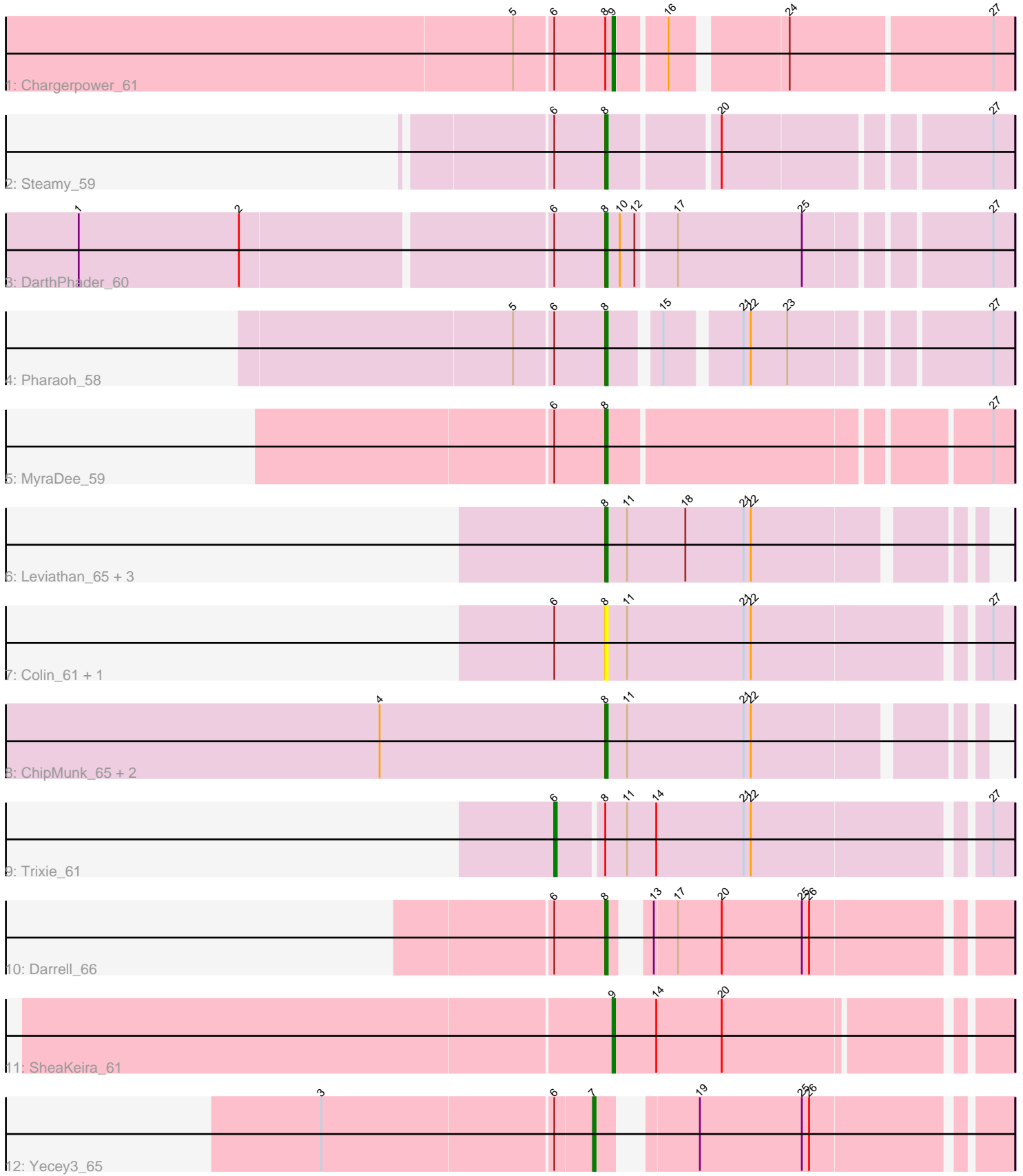


Pham 216604



Note: Tracks are now grouped by subcluster and scaled. Switching in subcluster is indicated by changes in track color. Track scale is now set by default to display the region 30 bp upstream of start 1 to 30 bp downstream of the last possible start. If this default region is judged to be packed too tightly with annotated starts, the track will be further scaled to only show that region of the ORF with annotated starts. This action will be indicated by adding "Zoomed" to the title. For starts, yellow indicates the location of called starts comprised solely of Glimmer/GeneMark auto-annotations, green indicates the location of called starts with at least 1 manual gene annotation.

Pham 216604 Report

This analysis was run 02/22/25 on database version 588.

Pham number 216604 has 18 members, 2 are drafts.

Phages represented in each track:

- Track 1 : Chargerpower_61
- Track 2 : Steamy_59
- Track 3 : DarthPhader_60
- Track 4 : Pharaoh_58
- Track 5 : MyraDee_59
- Track 6 : Leviathan_65, Smeagan_66, Whabigail7_64, Dignity_65
- Track 7 : Colin_61, WeiHuaDA_63
- Track 8 : ChipMunk_65, KingCyrus_64, EvilGenius_64
- Track 9 : Trixie_61
- Track 10 : Darrell_66
- Track 11 : SheaKeira_61
- Track 12 : Yecey3_65

Summary of Final Annotations (See graph section above for start numbers):

The start number called the most often in the published annotations is 8, it was called in 12 of the 16 non-draft genes in the pham.

Genes that call this "Most Annotated" start:

- ChipMunk_65, Colin_61, Darrell_66, DarthPhader_60, Dignity_65, EvilGenius_64, KingCyrus_64, Leviathan_65, MyraDee_59, Pharaoh_58, Smeagan_66, Steamy_59, WeiHuaDA_63, Whabigail7_64,

Genes that have the "Most Annotated" start but do not call it:

- Chargerpower_61, Trixie_61,

Genes that do not have the "Most Annotated" start:

- SheaKeira_61, Yecey3_65,

Summary by start number:

Start 6:

- Found in 10 of 18 (55.6%) of genes in pham
- Manual Annotations of this start: 1 of 16

- Called 10.0% of time when present
- Phage (with cluster) where this start called: Trixie_61 (A2),

Start 7:

- Found in 1 of 18 (5.6%) of genes in pham
- Manual Annotations of this start: 1 of 16
- Called 100.0% of time when present
- Phage (with cluster) where this start called: Yecey3_65 (A9),

Start 8:

- Found in 16 of 18 (88.9%) of genes in pham
- Manual Annotations of this start: 12 of 16
- Called 87.5% of time when present
- Phage (with cluster) where this start called: ChipMunk_65 (A2), Colin_61 (A2), Darrell_66 (A9), DarthPhader_60 (A12), Dignity_65 (A2), EvilGenius_64 (A2), KingCyrus_64 (A2), Leviathan_65 (A2), MyraDee_59 (A18), Pharaoh_58 (A12), Smeagan_66 (A2), Steamy_59 (A12), WeiHuaDA_63 (A2), Whabigail7_64 (A2),

Start 9:

- Found in 2 of 18 (11.1%) of genes in pham
- Manual Annotations of this start: 2 of 16
- Called 100.0% of time when present
- Phage (with cluster) where this start called: Chargerpower_61 (A), SheaKeira_61 (A9),

Summary by clusters:

There are 5 clusters represented in this pham: A9, A, A2, A18, A12,

Info for manual annotations of cluster A:

- Start number 9 was manually annotated 1 time for cluster A.

Info for manual annotations of cluster A12:

- Start number 8 was manually annotated 3 times for cluster A12.

Info for manual annotations of cluster A18:

- Start number 8 was manually annotated 1 time for cluster A18.

Info for manual annotations of cluster A2:

- Start number 6 was manually annotated 1 time for cluster A2.
- Start number 8 was manually annotated 7 times for cluster A2.

Info for manual annotations of cluster A9:

- Start number 7 was manually annotated 1 time for cluster A9.
- Start number 8 was manually annotated 1 time for cluster A9.
- Start number 9 was manually annotated 1 time for cluster A9.

Gene Information:

Gene: Chargerpower_61 Start: 38578, Stop: 38429, Start Num: 9

Candidate Starts for Chargerpower_61:

(5, 38617), (Start: 6 @38602 has 1 MA's), (Start: 8 @38581 has 12 MA's), (Start: 9 @38578 has 2 MA's), (16, 38560), (24, 38518), (27, 38437),

Gene: ChipMunk_65 Start: 41613, Stop: 41470, Start Num: 8

Candidate Starts for ChipMunk_65:

(4, 41706), (Start: 8 @41613 has 12 MA's), (11, 41604), (21, 41556), (22, 41553),

Gene: Colin_61 Start: 40164, Stop: 40006, Start Num: 8

Candidate Starts for Colin_61:

(Start: 6 @40185 has 1 MA's), (Start: 8 @40164 has 12 MA's), (11, 40155), (21, 40107), (22, 40104), (27, 40014),

Gene: Darrell_66 Start: 40703, Stop: 40557, Start Num: 8

Candidate Starts for Darrell_66:

(Start: 6 @40724 has 1 MA's), (Start: 8 @40703 has 12 MA's), (13, 40694), (17, 40685), (20, 40667), (25, 40634), (26, 40631),

Gene: DARTHPhader_60 Start: 40985, Stop: 40830, Start Num: 8

Candidate Starts for DARTHPhader_60:

(1, 41195), (2, 41129), (Start: 6 @41006 has 1 MA's), (Start: 8 @40985 has 12 MA's), (10, 40979), (12, 40973), (17, 40958), (25, 40907), (27, 40838),

Gene: Dignity_65 Start: 40427, Stop: 40284, Start Num: 8

Candidate Starts for Dignity_65:

(Start: 8 @40427 has 12 MA's), (11, 40418), (18, 40394), (21, 40370), (22, 40367),

Gene: EvilGenius_64 Start: 41614, Stop: 41471, Start Num: 8

Candidate Starts for EvilGenius_64:

(4, 41707), (Start: 8 @41614 has 12 MA's), (11, 41605), (21, 41557), (22, 41554),

Gene: KingCyrus_64 Start: 41609, Stop: 41466, Start Num: 8

Candidate Starts for KingCyrus_64:

(4, 41702), (Start: 8 @41609 has 12 MA's), (11, 41600), (21, 41552), (22, 41549),

Gene: Leviathan_65 Start: 40476, Stop: 40333, Start Num: 8

Candidate Starts for Leviathan_65:

(Start: 8 @40476 has 12 MA's), (11, 40467), (18, 40443), (21, 40419), (22, 40416),

Gene: MyraDee_59 Start: 36819, Stop: 36664, Start Num: 8

Candidate Starts for MyraDee_59:

(Start: 6 @36840 has 1 MA's), (Start: 8 @36819 has 12 MA's), (27, 36672),

Gene: Pharaoh_58 Start: 39859, Stop: 39713, Start Num: 8

Candidate Starts for Pharaoh_58:

(5, 39895), (Start: 6 @39880 has 1 MA's), (Start: 8 @39859 has 12 MA's), (15, 39841), (21, 39814), (22, 39811), (23, 39796), (27, 39721),

Gene: SheaKeira_61 Start: 39614, Stop: 39462, Start Num: 9

Candidate Starts for SheaKeira_61:

(Start: 9 @39614 has 2 MA's), (14, 39596), (20, 39569),

Gene: Smeagan_66 Start: 40563, Stop: 40420, Start Num: 8

Candidate Starts for Smeagan_66:

(Start: 8 @40563 has 12 MA's), (11, 40554), (18, 40530), (21, 40506), (22, 40503),

Gene: Steamy_59 Start: 39593, Stop: 39441, Start Num: 8

Candidate Starts for Steamy_59:

(Start: 6 @39614 has 1 MA's), (Start: 8 @39593 has 12 MA's), (20, 39551), (27, 39449),

Gene: Trixie_61 Start: 40009, Stop: 39833, Start Num: 6

Candidate Starts for Trixie_61:

(Start: 6 @40009 has 1 MA's), (Start: 8 @39991 has 12 MA's), (11, 39982), (14, 39970), (21, 39934), (22, 39931), (27, 39841),

Gene: WeiHuaDA_63 Start: 40711, Stop: 40553, Start Num: 8

Candidate Starts for WeiHuaDA_63:

(Start: 6 @40732 has 1 MA's), (Start: 8 @40711 has 12 MA's), (11, 40702), (21, 40654), (22, 40651), (27, 40561),

Gene: Whabigail7_64 Start: 40282, Stop: 40139, Start Num: 8

Candidate Starts for Whabigail7_64:

(Start: 8 @40282 has 12 MA's), (11, 40273), (18, 40249), (21, 40225), (22, 40222),

Gene: Yecey3_65 Start: 40008, Stop: 39859, Start Num: 7

Candidate Starts for Yecey3_65:

(3, 40116), (Start: 6 @40023 has 1 MA's), (Start: 7 @40008 has 1 MA's), (19, 39978), (25, 39936), (26, 39933),