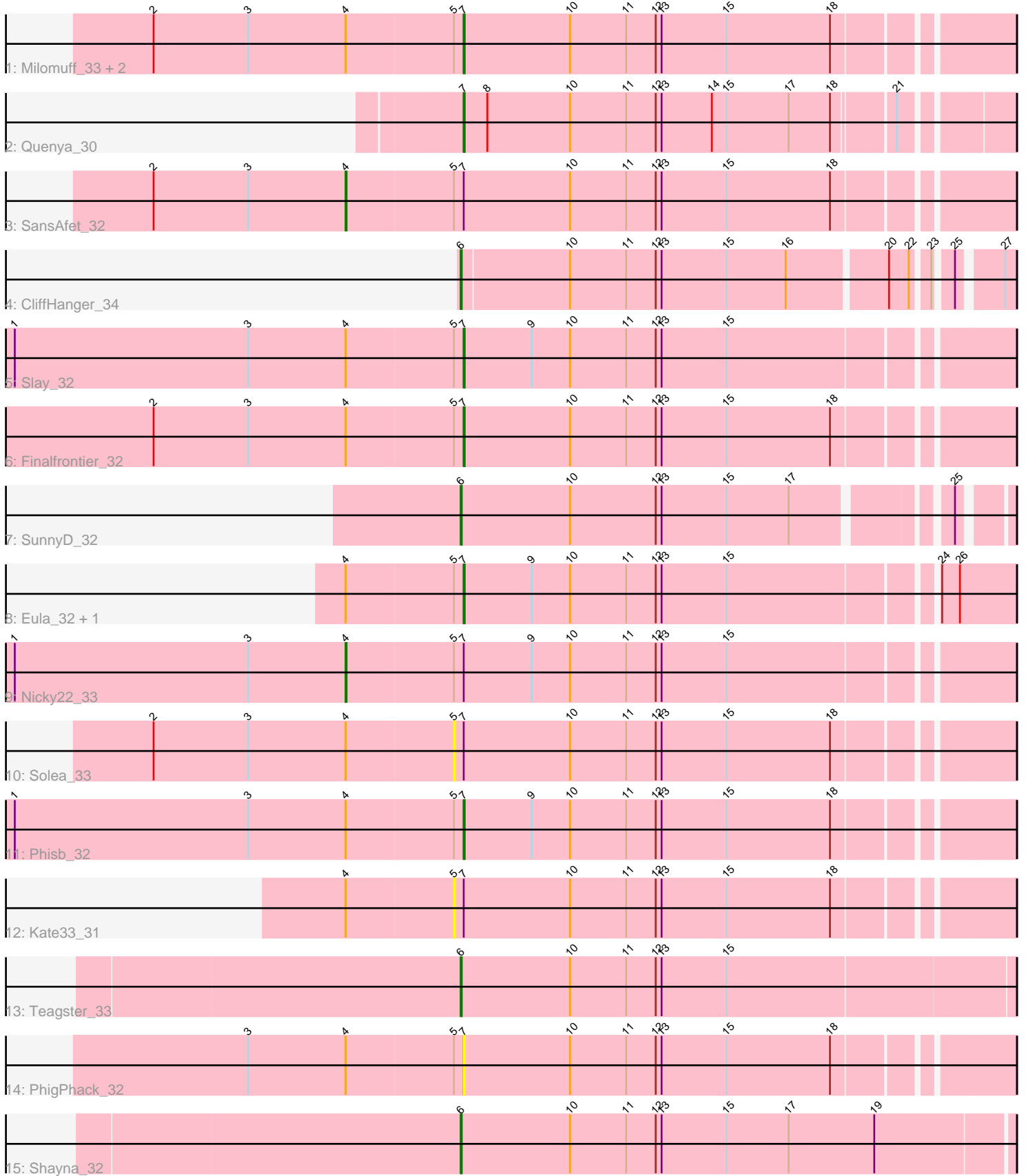


Pham 216627



Note: Tracks are now grouped by subcluster and scaled. Switching in subcluster is indicated by changes in track color. Track scale is now set by default to display the region 30 bp upstream of start 1 to 30 bp downstream of the last possible start. If this default region is judged to be packed too tightly with annotated starts, the track will be further scaled to only show that region of the ORF with annotated starts. This action will be indicated by adding "Zoomed" to the title. For starts, yellow indicates the location of called starts comprised solely of Glimmer/GeneMark auto-annotations, green indicates the location of called starts with at least 1 manual gene annotation.

## Pham 216627 Report

This analysis was run 02/22/25 on database version 588.

Pham number 216627 has 18 members, 4 are drafts.

Phages represented in each track:

- Track 1 : Milomuff\_33, Abigail\_31, Johnathan\_31
- Track 2 : Quenya\_30
- Track 3 : SansAfet\_32
- Track 4 : CliffHanger\_34
- Track 5 : Slay\_32
- Track 6 : Finalfrontier\_32
- Track 7 : SunnyD\_32
- Track 8 : Eula\_32, QMacho\_33
- Track 9 : Nicky22\_33
- Track 10 : Solea\_33
- Track 11 : Phisb\_32
- Track 12 : Kate33\_31
- Track 13 : Teagster\_33
- Track 14 : PhigPhack\_32
- Track 15 : Shayna\_32

### ***Summary of Final Annotations (See graph section above for start numbers):***

The start number called the most often in the published annotations is 7, it was called in 8 of the 14 non-draft genes in the pham.

Genes that call this "Most Annotated" start:

- Abigail\_31, Eula\_32, Finalfrontier\_32, Johnathan\_31, Milomuff\_33, PhigPhack\_32, Phisb\_32, QMacho\_33, Quenya\_30, Slay\_32,

Genes that have the "Most Annotated" start but do not call it:

- Kate33\_31, Nicky22\_33, SansAfet\_32, Solea\_33,

Genes that do not have the "Most Annotated" start:

- CliffHanger\_34, Shayna\_32, SunnyD\_32, Teagster\_33,

### **Summary by start number:**

Start 4:

- Found in 13 of 18 ( 72.2% ) of genes in pham
- Manual Annotations of this start: 2 of 14
- Called 15.4% of time when present
- Phage (with cluster) where this start called: Nicky22\_33 (EB), SansAfet\_32 (EB),

Start 5:

- Found in 13 of 18 ( 72.2% ) of genes in pham
- No Manual Annotations of this start.
- Called 15.4% of time when present
- Phage (with cluster) where this start called: Kate33\_31 (EB), Solea\_33 (EB),

Start 6:

- Found in 4 of 18 ( 22.2% ) of genes in pham
- Manual Annotations of this start: 4 of 14
- Called 100.0% of time when present
- Phage (with cluster) where this start called: CliffHanger\_34 (EB), Shayna\_32 (EB), SunnyD\_32 (EB), Teagster\_33 (EB),

Start 7:

- Found in 14 of 18 ( 77.8% ) of genes in pham
- Manual Annotations of this start: 8 of 14
- Called 71.4% of time when present
- Phage (with cluster) where this start called: Abigail\_31 (EB), Eula\_32 (EB), Finalfrontier\_32 (EB), Johnathan\_31 (EB), Milomuff\_33 (EB), PhigPhack\_32 (EB), Phisb\_32 (EB), QMacho\_33 (EB), Quenya\_30 (EB), Slay\_32 (EB),

### **Summary by clusters:**

There is one cluster represented in this pham: EB

Info for manual annotations of cluster EB:

- Start number 4 was manually annotated 2 times for cluster EB.
- Start number 6 was manually annotated 4 times for cluster EB.
- Start number 7 was manually annotated 8 times for cluster EB.

### **Gene Information:**

Gene: Abigail\_31 Start: 22628, Stop: 23164, Start Num: 7

Candidate Starts for Abigail\_31:

(2, 22316), (3, 22412), (Start: 4 @22511 has 2 MA's), (5, 22619), (Start: 7 @22628 has 8 MA's), (10, 22736), (11, 22793), (12, 22823), (13, 22829), (15, 22895), (18, 23000),

Gene: CliffHanger\_34 Start: 22466, Stop: 22987, Start Num: 6

Candidate Starts for CliffHanger\_34:

(Start: 6 @22466 has 4 MA's), (10, 22574), (11, 22631), (12, 22661), (13, 22667), (15, 22733), (16, 22793), (20, 22889), (22, 22907), (23, 22922), (25, 22937), (27, 22976),

Gene: Eula\_32 Start: 23053, Stop: 23589, Start Num: 7

Candidate Starts for Eula\_32:

(Start: 4 @22936 has 2 MA's), (5, 23044), (Start: 7 @23053 has 8 MA's), (9, 23122), (10, 23161), (11, 23218), (12, 23248), (13, 23254), (15, 23320), (24, 23515), (26, 23533),

Gene: Finalfrontier\_32 Start: 23664, Stop: 24200, Start Num: 7

Candidate Starts for Finalfrontier\_32:

(2, 23352), (3, 23448), (Start: 4 @23547 has 2 MA's), (5, 23655), (Start: 7 @23664 has 8 MA's), (10, 23772), (11, 23829), (12, 23859), (13, 23865), (15, 23931), (18, 24036),

Gene: Johnathan\_31 Start: 22510, Stop: 23046, Start Num: 7

Candidate Starts for Johnathan\_31:

(2, 22198), (3, 22294), (Start: 4 @22393 has 2 MA's), (5, 22501), (Start: 7 @22510 has 8 MA's), (10, 22618), (11, 22675), (12, 22705), (13, 22711), (15, 22777), (18, 22882),

Gene: Kate33\_31 Start: 22762, Stop: 23307, Start Num: 5

Candidate Starts for Kate33\_31:

(Start: 4 @22654 has 2 MA's), (5, 22762), (Start: 7 @22771 has 8 MA's), (10, 22879), (11, 22936), (12, 22966), (13, 22972), (15, 23038), (18, 23143),

Gene: Milomuff\_33 Start: 22871, Stop: 23407, Start Num: 7

Candidate Starts for Milomuff\_33:

(2, 22559), (3, 22655), (Start: 4 @22754 has 2 MA's), (5, 22862), (Start: 7 @22871 has 8 MA's), (10, 22979), (11, 23036), (12, 23066), (13, 23072), (15, 23138), (18, 23243),

Gene: Nicky22\_33 Start: 23401, Stop: 24054, Start Num: 4

Candidate Starts for Nicky22\_33:

(1, 23065), (3, 23302), (Start: 4 @23401 has 2 MA's), (5, 23509), (Start: 7 @23518 has 8 MA's), (9, 23587), (10, 23626), (11, 23683), (12, 23713), (13, 23719), (15, 23785),

Gene: PhigPhack\_32 Start: 22873, Stop: 23409, Start Num: 7

Candidate Starts for PhigPhack\_32:

(3, 22657), (Start: 4 @22756 has 2 MA's), (5, 22864), (Start: 7 @22873 has 8 MA's), (10, 22981), (11, 23038), (12, 23068), (13, 23074), (15, 23140), (18, 23245),

Gene: Phisb\_32 Start: 23109, Stop: 23645, Start Num: 7

Candidate Starts for Phisb\_32:

(1, 22656), (3, 22893), (Start: 4 @22992 has 2 MA's), (5, 23100), (Start: 7 @23109 has 8 MA's), (9, 23178), (10, 23217), (11, 23274), (12, 23304), (13, 23310), (15, 23376), (18, 23481),

Gene: QMacho\_33 Start: 23536, Stop: 24072, Start Num: 7

Candidate Starts for QMacho\_33:

(Start: 4 @23419 has 2 MA's), (5, 23527), (Start: 7 @23536 has 8 MA's), (9, 23605), (10, 23644), (11, 23701), (12, 23731), (13, 23737), (15, 23803), (24, 23998), (26, 24016),

Gene: Quenya\_30 Start: 23232, Stop: 23762, Start Num: 7

Candidate Starts for Quenya\_30:

(Start: 7 @23232 has 8 MA's), (8, 23256), (10, 23340), (11, 23397), (12, 23427), (13, 23433), (14, 23484), (15, 23499), (17, 23562), (18, 23604), (21, 23661),

Gene: SansAfet\_32 Start: 22861, Stop: 23514, Start Num: 4

Candidate Starts for SansAfet\_32:

(2, 22666), (3, 22762), (Start: 4 @22861 has 2 MA's), (5, 22969), (Start: 7 @22978 has 8 MA's), (10, 23086), (11, 23143), (12, 23173), (13, 23179), (15, 23245), (18, 23350),

Gene: Shayna\_32 Start: 22699, Stop: 23253, Start Num: 6

Candidate Starts for Shayna\_32:

(Start: 6 @22699 has 4 MA's), (10, 22810), (11, 22867), (12, 22897), (13, 22903), (15, 22969), (17, 23032), (19, 23119),

Gene: Slay\_32 Start: 23514, Stop: 24050, Start Num: 7

Candidate Starts for Slay\_32:

(1, 23061), (3, 23298), (Start: 4 @23397 has 2 MA's), (5, 23505), (Start: 7 @23514 has 8 MA's), (9, 23583), (10, 23622), (11, 23679), (12, 23709), (13, 23715), (15, 23781),

Gene: Solea\_33 Start: 22862, Stop: 23407, Start Num: 5

Candidate Starts for Solea\_33:

(2, 22559), (3, 22655), (Start: 4 @22754 has 2 MA's), (5, 22862), (Start: 7 @22871 has 8 MA's), (10, 22979), (11, 23036), (12, 23066), (13, 23072), (15, 23138), (18, 23243),

Gene: SunnyD\_32 Start: 22741, Stop: 23256, Start Num: 6

Candidate Starts for SunnyD\_32:

(Start: 6 @22741 has 4 MA's), (10, 22852), (12, 22939), (13, 22945), (15, 23011), (17, 23074), (25, 23212),

Gene: Teagster\_33 Start: 23532, Stop: 24086, Start Num: 6

Candidate Starts for Teagster\_33:

(Start: 6 @23532 has 4 MA's), (10, 23643), (11, 23700), (12, 23730), (13, 23736), (15, 23802),