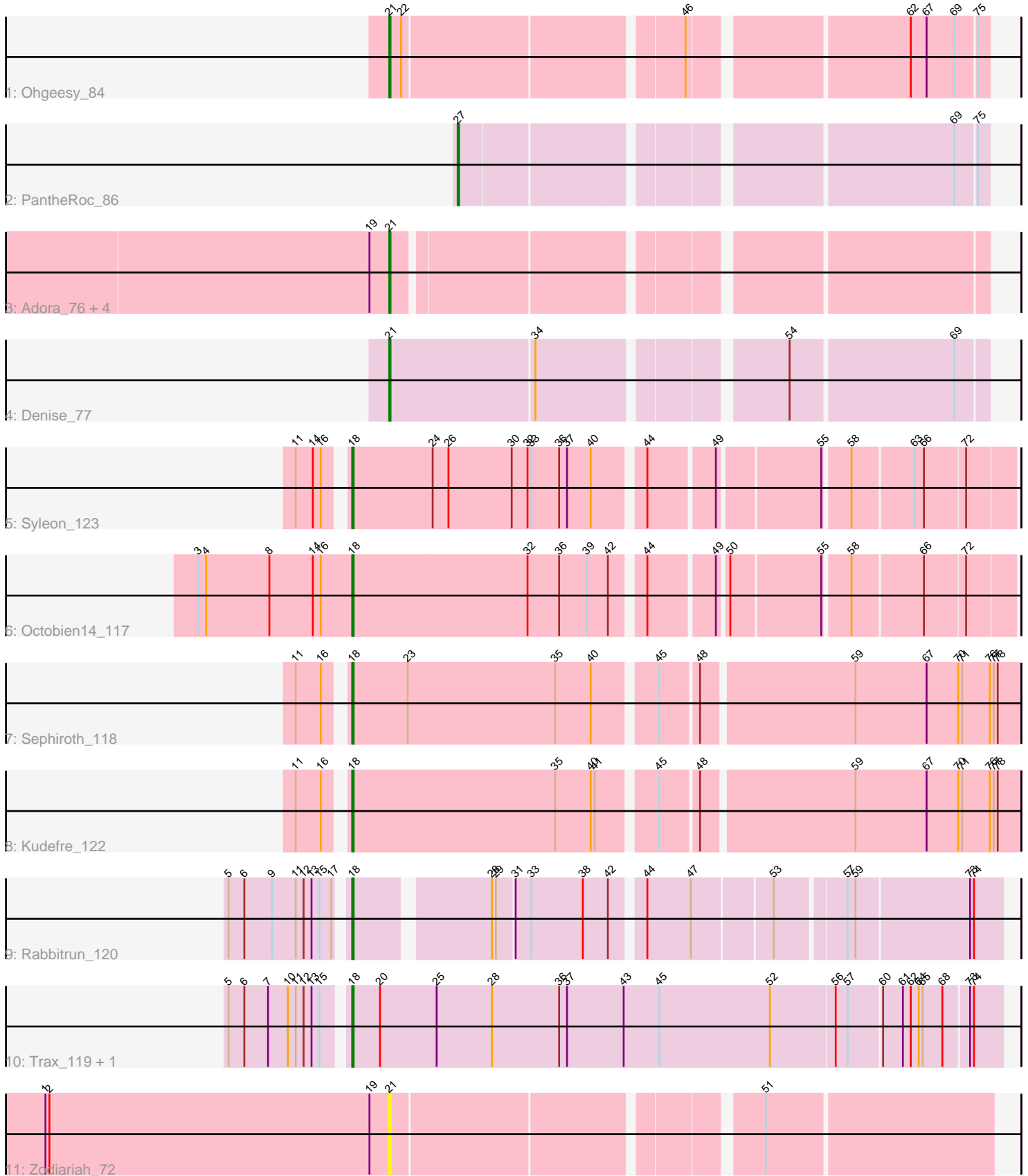


# Pham 216653



Note: Tracks are now grouped by subcluster and scaled. Switching in subcluster is indicated by changes in track color. Track scale is now set by default to display the region 30 bp upstream of start 1 to 30 bp downstream of the last possible start. If this default region is judged to be packed too tightly with annotated starts, the track will be further scaled to only show that region of the ORF with annotated starts. This action will be indicated by adding "Zoomed" to the title. For starts, yellow indicates the location of called starts comprised solely of Glimmer/GeneMark auto-annotations, green indicates the location of called starts with at least 1 manual gene annotation.

## Pham 216653 Report

This analysis was run 02/22/25 on database version 588.

Pham number 216653 has 16 members, 1 are drafts.

Phages represented in each track:

- Track 1 : Ohgeesy\_84
- Track 2 : PantheRoc\_86
- Track 3 : Adora\_76, Hortense\_79, Twinkle\_78, Howe\_79, Shlim410\_77
- Track 4 : Denise\_77
- Track 5 : Syleon\_123
- Track 6 : Octobien14\_117
- Track 7 : Sephiroth\_118
- Track 8 : Kudrefre\_122
- Track 9 : Rabbitrun\_120
- Track 10 : Trax\_119, Neville\_118
- Track 11 : Zodiariah\_72

### ***Summary of Final Annotations (See graph section above for start numbers):***

The start number called the most often in the published annotations is 21, it was called in 7 of the 15 non-draft genes in the pham.

Genes that call this "Most Annotated" start:

- Adora\_76, Denise\_77, Hortense\_79, Howe\_79, Ohgeesy\_84, Shlim410\_77, Twinkle\_78, Zodiariah\_72,

Genes that have the "Most Annotated" start but do not call it:

- 

Genes that do not have the "Most Annotated" start:

- Kudrefre\_122, Neville\_118, Octobien14\_117, PantheRoc\_86, Rabbitrun\_120, Sephiroth\_118, Syleon\_123, Trax\_119,

### **Summary by start number:**

Start 18:

- Found in 7 of 16 ( 43.8% ) of genes in pham
- Manual Annotations of this start: 7 of 15
- Called 100.0% of time when present

- Phage (with cluster) where this start called: Kundefre\_122 (DU1), Neville\_118 (DU2), Octobien14\_117 (DU1), Rabbitrun\_120 (DU2), Sephiroth\_118 (DU1), Syleon\_123 (DU1), Trax\_119 (DU2),

Start 21:

- Found in 8 of 16 ( 50.0% ) of genes in pham
- Manual Annotations of this start: 7 of 15
- Called 100.0% of time when present
- Phage (with cluster) where this start called: Adora\_76 (CZ4), Denise\_77 (CZ5), Hortense\_79 (CZ4), Howe\_79 (CZ4), Ohgeesy\_84 (CZ), Shlim410\_77 (CZ4), Twinkle\_78 (CZ4), Zodiariah\_72 (DW),

Start 27:

- Found in 1 of 16 ( 6.2% ) of genes in pham
- Manual Annotations of this start: 1 of 15
- Called 100.0% of time when present
- Phage (with cluster) where this start called: PantheRoc\_86 (CZ3),

**Summary by clusters:**

There are 7 clusters represented in this pham: CZ3, CZ4, CZ5, CZ, DW, DU1, DU2,

Info for manual annotations of cluster CZ:

- Start number 21 was manually annotated 1 time for cluster CZ.

Info for manual annotations of cluster CZ3:

- Start number 27 was manually annotated 1 time for cluster CZ3.

Info for manual annotations of cluster CZ4:

- Start number 21 was manually annotated 5 times for cluster CZ4.

Info for manual annotations of cluster CZ5:

- Start number 21 was manually annotated 1 time for cluster CZ5.

Info for manual annotations of cluster DU1:

- Start number 18 was manually annotated 4 times for cluster DU1.

Info for manual annotations of cluster DU2:

- Start number 18 was manually annotated 3 times for cluster DU2.

**Gene Information:**

Gene: Adora\_76 Start: 50971, Stop: 51381, Start Num: 21

Candidate Starts for Adora\_76:

(19, 50956), (Start: 21 @50971 has 7 MA's),

Gene: Denise\_77 Start: 44257, Stop: 44676, Start Num: 21

Candidate Starts for Denise\_77:

(Start: 21 @44257 has 7 MA's), (34, 44365), (54, 44533), (69, 44653),

Gene: Hortense\_79 Start: 52326, Stop: 52736, Start Num: 21

Candidate Starts for Hortense\_79:

(19, 52311), (Start: 21 @52326 has 7 MA's),

Gene: Howe\_79 Start: 52326, Stop: 52736, Start Num: 21

Candidate Starts for Howe\_79:

(19, 52311), (Start: 21 @52326 has 7 MA's),

Gene: Kudrefre\_122 Start: 66192, Stop: 66677, Start Num: 18

Candidate Starts for Kudrefre\_122:

(11, 66162), (16, 66180), (Start: 18 @66192 has 7 MA's), (35, 66345), (40, 66372), (41, 66375), (45, 66414), (48, 66441), (59, 66552), (67, 66606), (70, 66630), (71, 66633), (76, 66654), (77, 66657), (78, 66660),

Gene: Neville\_118 Start: 66844, Stop: 67326, Start Num: 18

Candidate Starts for Neville\_118:

(5, 66760), (6, 66772), (7, 66790), (10, 66805), (11, 66811), (12, 66817), (13, 66823), (15, 66829), (Start: 18 @66844 has 7 MA's), (20, 66865), (25, 66907), (28, 66949), (36, 67000), (37, 67006), (43, 67048), (45, 67075), (52, 67159), (56, 67207), (57, 67216), (60, 67240), (61, 67255), (62, 67261), (64, 67267), (65, 67270), (68, 67285), (73, 67303), (74, 67306),

Gene: Octobien14\_117 Start: 64715, Stop: 65179, Start Num: 18

Candidate Starts for Octobien14\_117:

(3, 64598), (4, 64604), (8, 64652), (14, 64685), (16, 64691), (Start: 18 @64715 has 7 MA's), (32, 64847), (36, 64871), (39, 64892), (42, 64907), (44, 64928), (49, 64973), (50, 64979), (55, 65045), (58, 65063), (66, 65114), (72, 65144),

Gene: Ohgeesy\_84 Start: 52600, Stop: 53016, Start Num: 21

Candidate Starts for Ohgeesy\_84:

(Start: 21 @52600 has 7 MA's), (22, 52609), (46, 52807), (62, 52960), (67, 52972), (69, 52993), (75, 53008),

Gene: PantheRoc\_86 Start: 52720, Stop: 53085, Start Num: 27

Candidate Starts for PantheRoc\_86:

(Start: 27 @52720 has 1 MA's), (69, 53062), (75, 53077),

Gene: Rabbitrun\_120 Start: 67985, Stop: 68431, Start Num: 18

Candidate Starts for Rabbitrun\_120:

(5, 67901), (6, 67913), (9, 67934), (11, 67952), (12, 67958), (13, 67964), (15, 67970), (17, 67979), (Start: 18 @67985 has 7 MA's), (28, 68075), (29, 68078), (31, 68090), (33, 68102), (38, 68141), (42, 68159), (44, 68180), (47, 68213), (53, 68270), (57, 68318), (59, 68324), (73, 68408), (74, 68411),

Gene: Sephiroth\_118 Start: 65947, Stop: 66432, Start Num: 18

Candidate Starts for Sephiroth\_118:

(11, 65917), (16, 65935), (Start: 18 @65947 has 7 MA's), (23, 65989), (35, 66100), (40, 66127), (45, 66169), (48, 66196), (59, 66307), (67, 66361), (70, 66385), (71, 66388), (76, 66409), (77, 66412), (78, 66415),

Gene: Shlim410\_77 Start: 52326, Stop: 52736, Start Num: 21

Candidate Starts for Shlim410\_77:

(19, 52311), (Start: 21 @52326 has 7 MA's),

Gene: Syleon\_123 Start: 66729, Stop: 67193, Start Num: 18

Candidate Starts for Syleon\_123:

(11, 66699), (14, 66711), (16, 66717), (Start: 18 @66729 has 7 MA's), (24, 66789), (26, 66801), (30, 66849), (32, 66861), (33, 66864), (36, 66885), (37, 66891), (40, 66909), (44, 66942), (49, 66987), (55, 67059), (58, 67077), (63, 67122), (66, 67128), (72, 67158),

Gene: Trax\_119 Start: 67664, Stop: 68146, Start Num: 18

Candidate Starts for Trax\_119:

(5, 67580), (6, 67592), (7, 67610), (10, 67625), (11, 67631), (12, 67637), (13, 67643), (15, 67649), (Start: 18 @67664 has 7 MA's), (20, 67685), (25, 67727), (28, 67769), (36, 67820), (37, 67826), (43, 67868), (45, 67895), (52, 67979), (56, 68027), (57, 68036), (60, 68060), (61, 68075), (62, 68081), (64, 68087), (65, 68090), (68, 68105), (73, 68123), (74, 68126),

Gene: Twinkle\_78 Start: 53385, Stop: 53795, Start Num: 21

Candidate Starts for Twinkle\_78:

(19, 53370), (Start: 21 @53385 has 7 MA's),

Gene: Zodiariah\_72 Start: 50344, Stop: 50766, Start Num: 21

Candidate Starts for Zodiariah\_72:

(1, 50083), (2, 50086), (19, 50329), (Start: 21 @50344 has 7 MA's), (51, 50599),