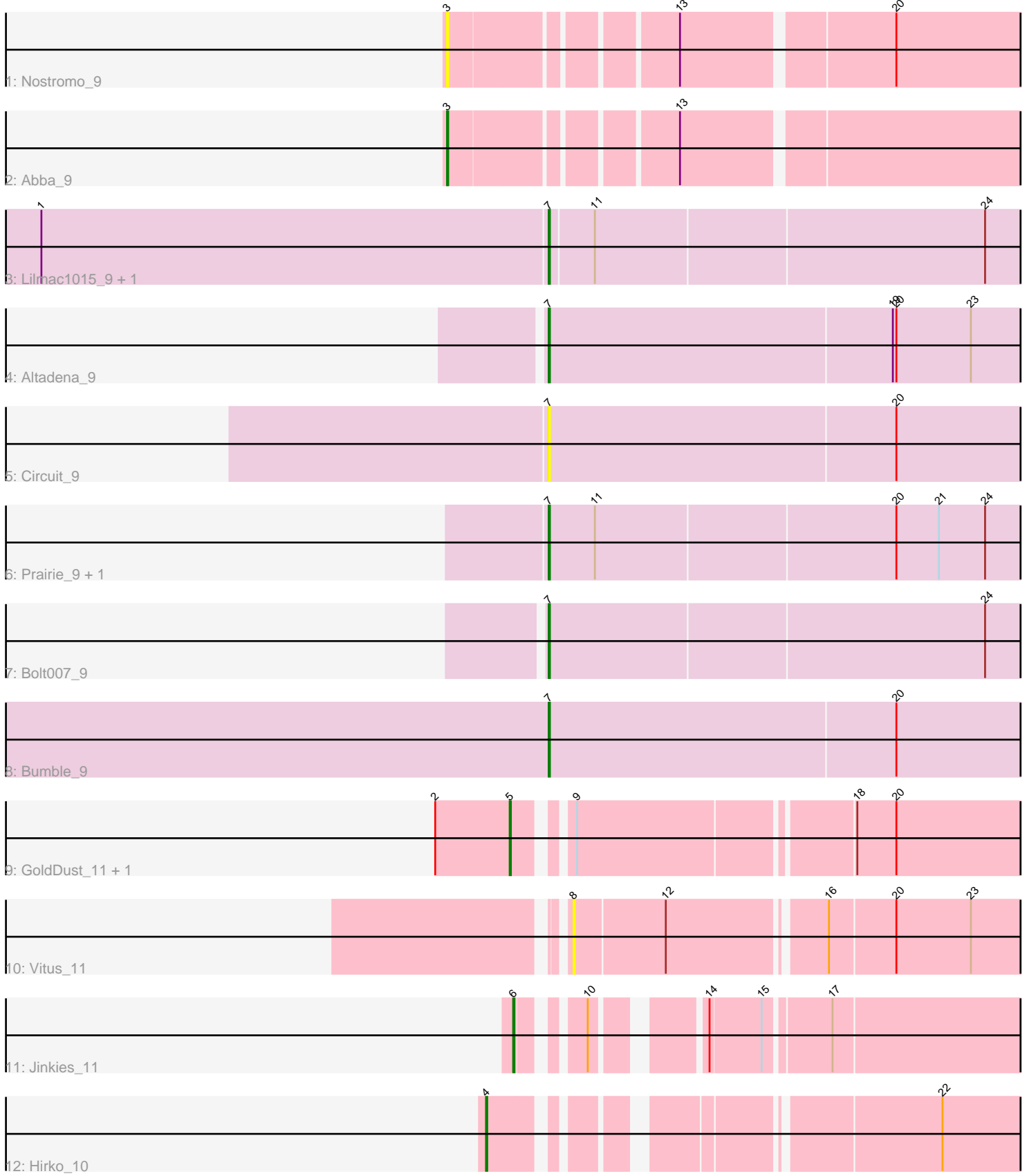


Pham 216672



Note: Tracks are now grouped by subcluster and scaled. Switching in subcluster is indicated by changes in track color. Track scale is now set by default to display the region 30 bp upstream of start 1 to 30 bp downstream of the last possible start. If this default region is judged to be packed too tightly with annotated starts, the track will be further scaled to only show that region of the ORF with annotated starts. This action will be indicated by adding "Zoomed" to the title. For starts, yellow indicates the location of called starts comprised solely of Glimmer/GeneMark auto-annotations, green indicates the location of called starts with at least 1 manual gene annotation.

## Pham 216672 Report

This analysis was run 02/22/25 on database version 588.

Pham number 216672 has 15 members, 5 are drafts.

Phages represented in each track:

- Track 1 : Nostromo\_9
- Track 2 : Abba\_9
- Track 3 : Lilmac1015\_9, CalWood4100\_9
- Track 4 : Altadena\_9
- Track 5 : Circuit\_9
- Track 6 : Prairie\_9, Klevey\_9
- Track 7 : Bolt007\_9
- Track 8 : Bumble\_9
- Track 9 : GoldDust\_11, Vibaki\_11
- Track 10 : Vitus\_11
- Track 11 : Jinkies\_11
- Track 12 : Hirko\_10

### ***Summary of Final Annotations (See graph section above for start numbers):***

The start number called the most often in the published annotations is 7, it was called in 6 of the 10 non-draft genes in the pham.

Genes that call this "Most Annotated" start:

- Altadena\_9, Bolt007\_9, Bumble\_9, CalWood4100\_9, Circuit\_9, Klevey\_9, Lilmac1015\_9, Prairie\_9,

Genes that have the "Most Annotated" start but do not call it:

- 

Genes that do not have the "Most Annotated" start:

- Abba\_9, GoldDust\_11, Hirko\_10, Jinkies\_11, Nostromo\_9, Vibaki\_11, Vitus\_11,

### **Summary by start number:**

Start 3:

- Found in 2 of 15 ( 13.3% ) of genes in pham
- Manual Annotations of this start: 1 of 10
- Called 100.0% of time when present

- Phage (with cluster) where this start called: Abba\_9 (AO3), Nostromo\_9 (AO3),

#### Start 4:

- Found in 1 of 15 ( 6.7% ) of genes in pham
- Manual Annotations of this start: 1 of 10
- Called 100.0% of time when present
- Phage (with cluster) where this start called: Hirko\_10 (FL),

#### Start 5:

- Found in 2 of 15 ( 13.3% ) of genes in pham
- Manual Annotations of this start: 1 of 10
- Called 100.0% of time when present
- Phage (with cluster) where this start called: GoldDust\_11 (FL), Vibaki\_11 (FL),

#### Start 6:

- Found in 1 of 15 ( 6.7% ) of genes in pham
- Manual Annotations of this start: 1 of 10
- Called 100.0% of time when present
- Phage (with cluster) where this start called: Jinkies\_11 (FL),

#### Start 7:

- Found in 8 of 15 ( 53.3% ) of genes in pham
- Manual Annotations of this start: 6 of 10
- Called 100.0% of time when present
- Phage (with cluster) where this start called: Altadena\_9 (FH), Bolt007\_9 (FH), Bumble\_9 (FH), CalWood4100\_9 (FH), Circuit\_9 (FH), Klevey\_9 (FH), Lilmac1015\_9 (FH), Prairie\_9 (FH),

#### Start 8:

- Found in 1 of 15 ( 6.7% ) of genes in pham
- No Manual Annotations of this start.
- Called 100.0% of time when present
- Phage (with cluster) where this start called: Vitus\_11 (FL),

### **Summary by clusters:**

There are 3 clusters represented in this pham: FH, AO3, FL,

Info for manual annotations of cluster AO3:

- Start number 3 was manually annotated 1 time for cluster AO3.

Info for manual annotations of cluster FH:

- Start number 7 was manually annotated 6 times for cluster FH.

Info for manual annotations of cluster FL:

- Start number 4 was manually annotated 1 time for cluster FL.
- Start number 5 was manually annotated 1 time for cluster FL.
- Start number 6 was manually annotated 1 time for cluster FL.

### **Gene Information:**

Gene: Abba\_9 Start: 8309, Stop: 8785, Start Num: 3  
Candidate Starts for Abba\_9:  
(Start: 3 @8309 has 1 MA's), (13, 8480),

Gene: Altadena\_9 Start: 8045, Stop: 8473, Start Num: 7  
Candidate Starts for Altadena\_9:  
(Start: 7 @8045 has 6 MA's), (19, 8333), (20, 8336), (23, 8399),

Gene: Bolt007\_9 Start: 7996, Stop: 8418, Start Num: 7  
Candidate Starts for Bolt007\_9:  
(Start: 7 @7996 has 6 MA's), (24, 8359),

Gene: Bumble\_9 Start: 8062, Stop: 8487, Start Num: 7  
Candidate Starts for Bumble\_9:  
(Start: 7 @8062 has 6 MA's), (20, 8353),

Gene: CalWood4100\_9 Start: 7982, Stop: 8401, Start Num: 7  
Candidate Starts for CalWood4100\_9:  
(1, 7556), (Start: 7 @7982 has 6 MA's), (11, 8018), (24, 8342),

Gene: Circuit\_9 Start: 8048, Stop: 8473, Start Num: 7  
Candidate Starts for Circuit\_9:  
(Start: 7 @8048 has 6 MA's), (20, 8339),

Gene: GoldDust\_11 Start: 10176, Stop: 10595, Start Num: 5  
Candidate Starts for GoldDust\_11:  
(2, 10113), (Start: 5 @10176 has 1 MA's), (9, 10209), (18, 10428), (20, 10461),

Gene: Hirko\_10 Start: 9608, Stop: 10018, Start Num: 4  
Candidate Starts for Hirko\_10:  
(Start: 4 @9608 has 1 MA's), (22, 9923),

Gene: Jinkies\_11 Start: 8933, Stop: 9322, Start Num: 6  
Candidate Starts for Jinkies\_11:  
(Start: 6 @8933 has 1 MA's), (10, 8972), (14, 9044), (15, 9086), (17, 9137),

Gene: Klevey\_9 Start: 7989, Stop: 8411, Start Num: 7  
Candidate Starts for Klevey\_9:  
(Start: 7 @7989 has 6 MA's), (11, 8028), (20, 8277), (21, 8313), (24, 8352),

Gene: Lilmac1015\_9 Start: 7982, Stop: 8401, Start Num: 7  
Candidate Starts for Lilmac1015\_9:  
(1, 7556), (Start: 7 @7982 has 6 MA's), (11, 8018), (24, 8342),

Gene: Nostromo\_9 Start: 8512, Stop: 8988, Start Num: 3  
Candidate Starts for Nostromo\_9:  
(Start: 3 @8512 has 1 MA's), (13, 8683), (20, 8851),

Gene: Prairie\_9 Start: 7989, Stop: 8411, Start Num: 7  
Candidate Starts for Prairie\_9:  
(Start: 7 @7989 has 6 MA's), (11, 8028), (20, 8277), (21, 8313), (24, 8352),

Gene: Vibaki\_11 Start: 10082, Stop: 10474, Start Num: 5

Candidate Starts for Vibaki\_11:

(2, 10019), (Start: 5 @10082 has 1 MA's), (9, 10115), (18, 10307), (20, 10340),

Gene: Vitus\_11 Start: 9895, Stop: 10281, Start Num: 8

Candidate Starts for Vitus\_11:

(8, 9895), (12, 9970), (16, 10093), (20, 10147), (23, 10210),