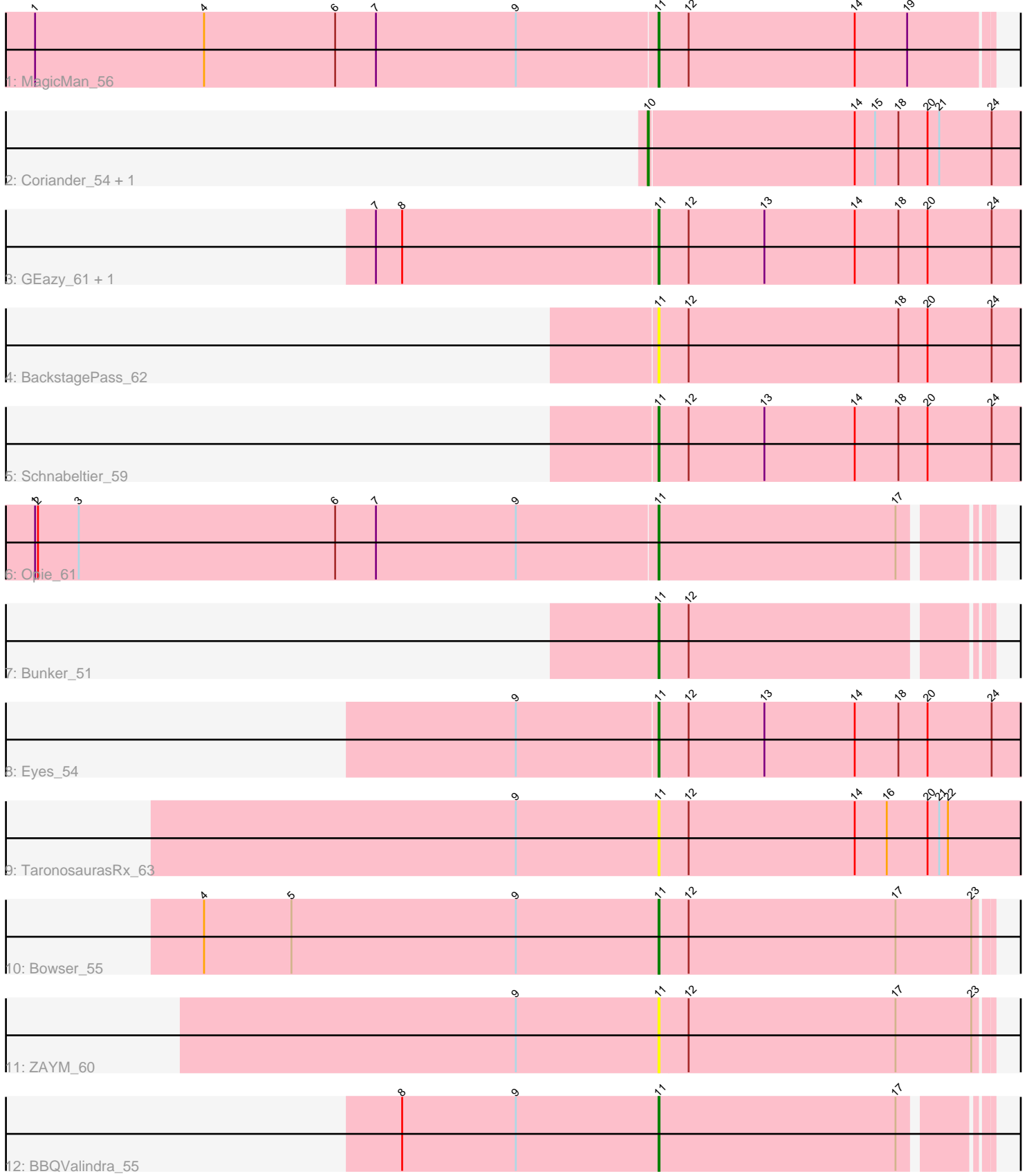


# Pham 216691



Note: Tracks are now grouped by subcluster and scaled. Switching in subcluster is indicated by changes in track color. Track scale is now set by default to display the region 30 bp upstream of start 1 to 30 bp downstream of the last possible start. If this default region is judged to be packed too tightly with annotated starts, the track will be further scaled to only show that region of the ORF with annotated starts. This action will be indicated by adding "Zoomed" to the title. For starts, yellow indicates the location of called starts comprised solely of Glimmer/GeneMark auto-annotations, green indicates the location of called starts with at least 1 manual gene annotation.

## Pham 216691 Report

This analysis was run 02/22/25 on database version 588.

Pham number 216691 has 14 members, 4 are drafts.

Phages represented in each track:

- Track 1 : MagicMan\_56
- Track 2 : Coriander\_54, Doggs\_52
- Track 3 : GEazy\_61, HannahD\_58
- Track 4 : BackstagePass\_62
- Track 5 : Schnabeltier\_59
- Track 6 : Opie\_61
- Track 7 : Bunker\_51
- Track 8 : Eyes\_54
- Track 9 : TaronosaurusRx\_63
- Track 10 : Bowser\_55
- Track 11 : ZAYM\_60
- Track 12 : BBQValindra\_55

### ***Summary of Final Annotations (See graph section above for start numbers):***

The start number called the most often in the published annotations is 11, it was called in 9 of the 10 non-draft genes in the pham.

Genes that call this "Most Annotated" start:

- BBQValindra\_55, BackstagePass\_62, Bowser\_55, Bunker\_51, Eyes\_54, GEazy\_61, HannahD\_58, MagicMan\_56, Opie\_61, Schnabeltier\_59, TaronosaurusRx\_63, ZAYM\_60,

Genes that have the "Most Annotated" start but do not call it:

- 

Genes that do not have the "Most Annotated" start:

- Coriander\_54, Doggs\_52,

### **Summary by start number:**

Start 10:

- Found in 2 of 14 ( 14.3% ) of genes in pham
- Manual Annotations of this start: 1 of 10

- Called 100.0% of time when present
- Phage (with cluster) where this start called: Coriander\_54 (DB), Doggs\_52 (DB),

Start 11:

- Found in 12 of 14 ( 85.7% ) of genes in pham
- Manual Annotations of this start: 9 of 10
- Called 100.0% of time when present
- Phage (with cluster) where this start called: BBQValindra\_55 (DB), BackstagePass\_62 (DB), Bowser\_55 (DB), Bunker\_51 (DB), Eyes\_54 (DB), GEazy\_61 (DB), HannahD\_58 (DB), MagicMan\_56 (DB), Opie\_61 (DB), Schnabeltier\_59 (DB), TaronosaurusRx\_63 (DB), ZAYM\_60 (DB),

### **Summary by clusters:**

There is one cluster represented in this pham: DB

Info for manual annotations of cluster DB:

- Start number 10 was manually annotated 1 time for cluster DB.
- Start number 11 was manually annotated 9 times for cluster DB.

### **Gene Information:**

Gene: BBQValindra\_55 Start: 39865, Stop: 40185, Start Num: 11

Candidate Starts for BBQValindra\_55:

(8, 39601), (9, 39718), (Start: 11 @39865 has 9 MA's), (17, 40108),

Gene: BackstagePass\_62 Start: 39231, Stop: 39605, Start Num: 11

Candidate Starts for BackstagePass\_62:

(Start: 11 @39231 has 9 MA's), (12, 39261), (18, 39477), (20, 39507), (24, 39573),

Gene: Bowser\_55 Start: 39573, Stop: 39911, Start Num: 11

Candidate Starts for Bowser\_55:

(4, 39105), (5, 39195), (9, 39426), (Start: 11 @39573 has 9 MA's), (12, 39603), (17, 39816), (23, 39894),

Gene: Bunker\_51 Start: 38172, Stop: 38492, Start Num: 11

Candidate Starts for Bunker\_51:

(Start: 11 @38172 has 9 MA's), (12, 38202),

Gene: Coriander\_54 Start: 38252, Stop: 38635, Start Num: 10

Candidate Starts for Coriander\_54:

(Start: 10 @38252 has 1 MA's), (14, 38462), (15, 38483), (18, 38507), (20, 38537), (21, 38549), (24, 38603),

Gene: Doggs\_52 Start: 38571, Stop: 38954, Start Num: 10

Candidate Starts for Doggs\_52:

(Start: 10 @38571 has 1 MA's), (14, 38781), (15, 38802), (18, 38826), (20, 38856), (21, 38868), (24, 38922),

Gene: Eyes\_54 Start: 39592, Stop: 39966, Start Num: 11

Candidate Starts for Eyes\_54:

(9, 39448), (Start: 11 @39592 has 9 MA's), (12, 39622), (13, 39700), (14, 39793), (18, 39838), (20, 39868), (24, 39934),

Gene: GEazy\_61 Start: 39774, Stop: 40148, Start Num: 11

Candidate Starts for GEazy\_61:

(7, 39486), (8, 39513), (Start: 11 @39774 has 9 MA's), (12, 39804), (13, 39882), (14, 39975), (18, 40020), (20, 40050), (24, 40116),

Gene: HannahD\_58 Start: 39141, Stop: 39515, Start Num: 11

Candidate Starts for HannahD\_58:

(7, 38853), (8, 38880), (Start: 11 @39141 has 9 MA's), (12, 39171), (13, 39249), (14, 39342), (18, 39387), (20, 39417), (24, 39483),

Gene: MagicMan\_56 Start: 39627, Stop: 39965, Start Num: 11

Candidate Starts for MagicMan\_56:

(1, 38988), (4, 39162), (6, 39297), (7, 39339), (9, 39483), (Start: 11 @39627 has 9 MA's), (12, 39657), (14, 39828), (19, 39882),

Gene: Opie\_61 Start: 40907, Stop: 41227, Start Num: 11

Candidate Starts for Opie\_61:

(1, 40268), (2, 40271), (3, 40313), (6, 40577), (7, 40619), (9, 40763), (Start: 11 @40907 has 9 MA's), (17, 41150),

Gene: Schnabeltier\_59 Start: 40175, Stop: 40549, Start Num: 11

Candidate Starts for Schnabeltier\_59:

(Start: 11 @40175 has 9 MA's), (12, 40205), (13, 40283), (14, 40376), (18, 40421), (20, 40451), (24, 40517),

Gene: TaronosaurusRx\_63 Start: 40175, Stop: 40549, Start Num: 11

Candidate Starts for TaronosaurusRx\_63:

(9, 40028), (Start: 11 @40175 has 9 MA's), (12, 40205), (14, 40376), (16, 40409), (20, 40451), (21, 40463), (22, 40472),

Gene: ZAYM\_60 Start: 39924, Stop: 40262, Start Num: 11

Candidate Starts for ZAYM\_60:

(9, 39777), (Start: 11 @39924 has 9 MA's), (12, 39954), (17, 40167), (23, 40245),