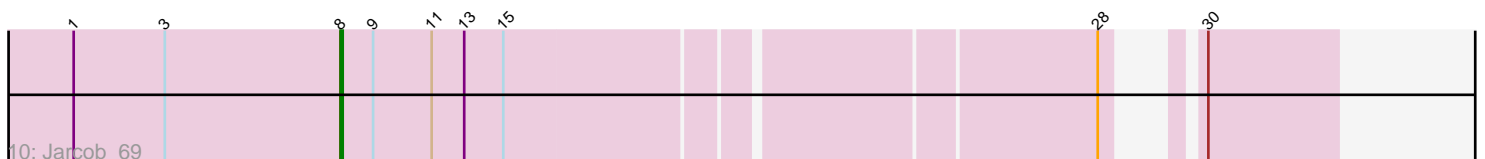
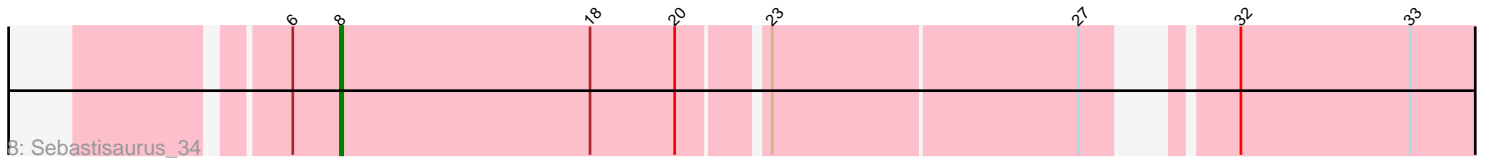
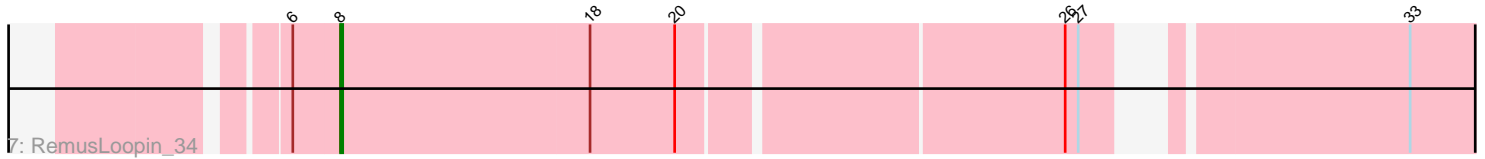
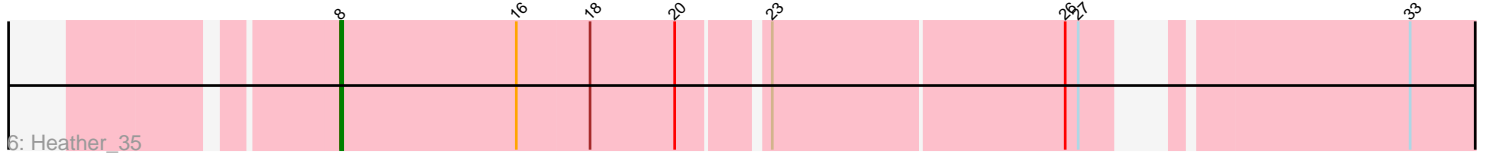
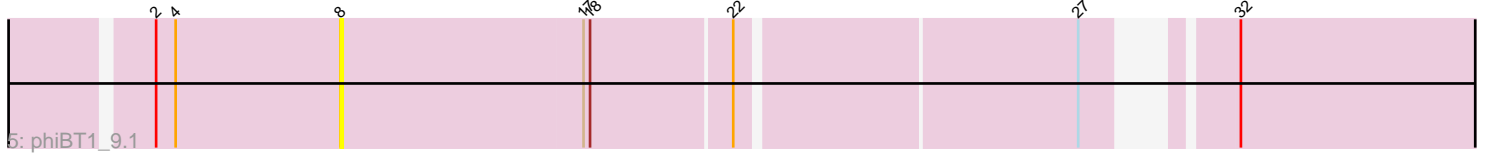
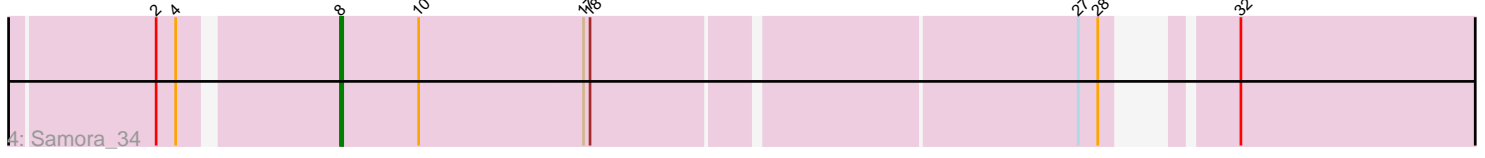
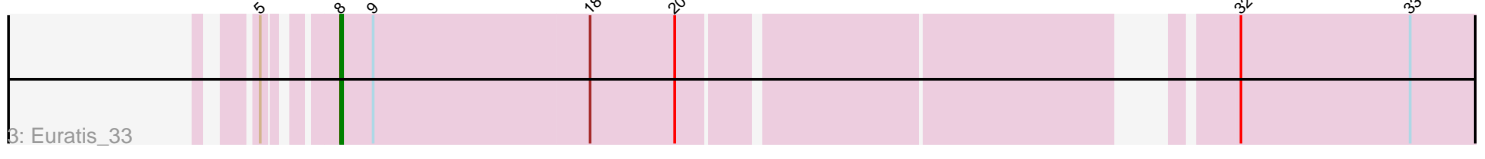
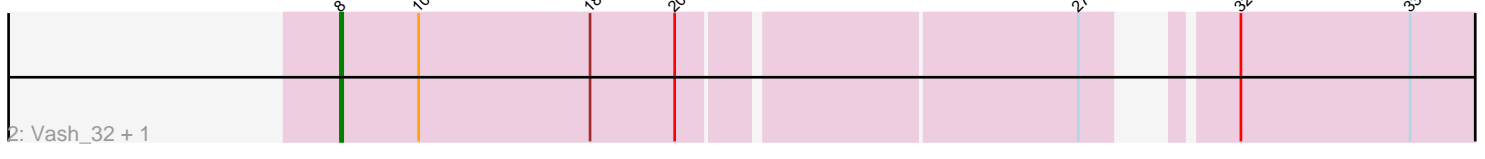
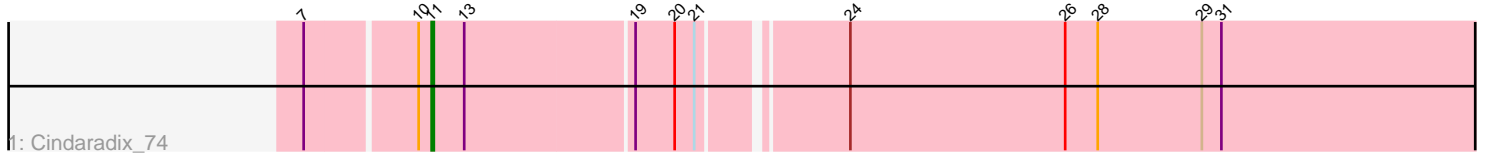


Pham 216698



Note: Tracks are now grouped by subcluster and scaled. Switching in subcluster is indicated by changes in track color. Track scale is now set by default to display the region 30 bp upstream of start 1 to 30 bp downstream of the last possible start. If this default region is judged to be packed too tightly with annotated starts, the track will be further scaled to only show that region of the ORF with annotated starts. This action will be indicated by adding "Zoomed" to the title. For starts, yellow indicates the location of called starts comprised solely of Glimmer/GeneMark auto-annotations, green indicates the location of called starts with at least 1 manual gene annotation.

Pham 216698 Report

This analysis was run 02/22/25 on database version 588.

Pham number 216698 has 14 members, 1 are drafts.

Phages represented in each track:

- Track 1 : Cindaradix_74
- Track 2 : Vash_32, Lilbooboo_32
- Track 3 : Euratis_33
- Track 4 : Samora_34
- Track 5 : phiBT1_9.1
- Track 6 : Heather_35
- Track 7 : RemusLoopin_34
- Track 8 : Sebastisaurus_34
- Track 9 : OfUltron_75, Ochi17_73, Llama_74, Sebastian_75
- Track 10 : Jarcob_69

Summary of Final Annotations (See graph section above for start numbers):

The start number called the most often in the published annotations is 8, it was called in 12 of the 13 non-draft genes in the pham.

Genes that call this "Most Annotated" start:

- Euratis_33, Heather_35, Jarcob_69, Lilbooboo_32, Llama_74, Ochi17_73, OfUltron_75, RemusLoopin_34, Samora_34, Sebastian_75, Sebastisaurus_34, Vash_32, phiBT1_9.1,

Genes that have the "Most Annotated" start but do not call it:

-

Genes that do not have the "Most Annotated" start:

- Cindaradix_74,

Summary by start number:

Start 8:

- Found in 13 of 14 (92.9%) of genes in pham
- Manual Annotations of this start: 12 of 13
- Called 100.0% of time when present

- Phage (with cluster) where this start called: Euratis_33 (BB1), Heather_35 (BB2), Jacob_69 (F1), Lilbooboo_32 (BB1), Llama_74 (F1), Ochi17_73 (F1), OfUltron_75 (F1), RemusLoopin_34 (BB2), Samora_34 (BB1), Sebastian_75 (F1), Sebastisaurus_34 (BB2), Vash_32 (BB1), phiBT1_9.1 (BB1),

Start 11:

- Found in 2 of 14 (14.3%) of genes in pham
- Manual Annotations of this start: 1 of 13
- Called 50.0% of time when present
- Phage (with cluster) where this start called: Cindaradix_74 (A4),

Summary by clusters:

There are 4 clusters represented in this pham: F1, A4, BB1, BB2,

Info for manual annotations of cluster A4:

- Start number 11 was manually annotated 1 time for cluster A4.

Info for manual annotations of cluster BB1:

- Start number 8 was manually annotated 4 times for cluster BB1.

Info for manual annotations of cluster BB2:

- Start number 8 was manually annotated 3 times for cluster BB2.

Info for manual annotations of cluster F1:

- Start number 8 was manually annotated 5 times for cluster F1.

Gene Information:

Gene: Cindaradix_74 Start: 47332, Stop: 46844, Start Num: 11

Candidate Starts for Cindaradix_74:

(7, 47386), (10, 47338), (Start: 11 @47332 has 1 MA's), (13, 47317), (19, 47242), (20, 47224), (21, 47215), (24, 47155), (26, 47056), (28, 47041), (29, 46993), (31, 46984),

Gene: Euratis_33 Start: 25788, Stop: 26288, Start Num: 8

Candidate Starts for Euratis_33:

(5, 25764), (Start: 8 @25788 has 12 MA's), (9, 25803), (18, 25902), (20, 25941), (32, 26157), (33, 26235),

Gene: Heather_35 Start: 26803, Stop: 27303, Start Num: 8

Candidate Starts for Heather_35:

(Start: 8 @26803 has 12 MA's), (16, 26884), (18, 26917), (20, 26956), (23, 26992), (26, 27124), (27, 27130), (33, 27250),

Gene: Jacob_69 Start: 45412, Stop: 45819, Start Num: 8

Candidate Starts for Jacob_69:

(1, 45289), (3, 45331), (Start: 8 @45412 has 12 MA's), (9, 45427), (Start: 11 @45454 has 1 MA's), (13, 45469), (15, 45487), (28, 45742), (30, 45760),

Gene: Lilbooboo_32 Start: 25803, Stop: 26303, Start Num: 8

Candidate Starts for Lilbooboo_32:

(Start: 8 @25803 has 12 MA's), (10, 25839), (18, 25917), (20, 25956), (27, 26130), (32, 26172), (33, 26250),

Gene: Llama_74 Start: 46111, Stop: 46482, Start Num: 8

Candidate Starts for Llama_74:

(1, 45988), (3, 46030), (Start: 8 @46111 has 12 MA's), (12, 46159), (14, 46174), (25, 46402),

Gene: Ochi17_73 Start: 45707, Stop: 46078, Start Num: 8

Candidate Starts for Ochi17_73:

(1, 45584), (3, 45626), (Start: 8 @45707 has 12 MA's), (12, 45755), (14, 45770), (25, 45998),

Gene: OfUltron_75 Start: 46256, Stop: 46627, Start Num: 8

Candidate Starts for OfUltron_75:

(1, 46133), (3, 46175), (Start: 8 @46256 has 12 MA's), (12, 46304), (14, 46319), (25, 46547),

Gene: RemusLoopin_34 Start: 26998, Stop: 27498, Start Num: 8

Candidate Starts for RemusLoopin_34:

(6, 26977), (Start: 8 @26998 has 12 MA's), (18, 27112), (20, 27151), (26, 27319), (27, 27325), (33, 27445),

Gene: Samora_34 Start: 26403, Stop: 26903, Start Num: 8

Candidate Starts for Samora_34:

(2, 26328), (4, 26337), (Start: 8 @26403 has 12 MA's), (10, 26439), (17, 26514), (18, 26517), (27, 26730), (28, 26739), (32, 26772),

Gene: Seabastian_75 Start: 46257, Stop: 46628, Start Num: 8

Candidate Starts for Seabastian_75:

(1, 46134), (3, 46176), (Start: 8 @46257 has 12 MA's), (12, 46305), (14, 46320), (25, 46548),

Gene: Sebastisaurus_34 Start: 26720, Stop: 27220, Start Num: 8

Candidate Starts for Sebastisaurus_34:

(6, 26699), (Start: 8 @26720 has 12 MA's), (18, 26834), (20, 26873), (23, 26909), (27, 27047), (32, 27089), (33, 27167),

Gene: Vash_32 Start: 25646, Stop: 26146, Start Num: 8

Candidate Starts for Vash_32:

(Start: 8 @25646 has 12 MA's), (10, 25682), (18, 25760), (20, 25799), (27, 25973), (32, 26015), (33, 26093),

Gene: phiBT1_9.1 Start: 27120, Stop: 27620, Start Num: 8

Candidate Starts for phiBT1_9.1:

(2, 27036), (4, 27045), (Start: 8 @27120 has 12 MA's), (17, 27231), (18, 27234), (22, 27297), (27, 27447), (32, 27489),