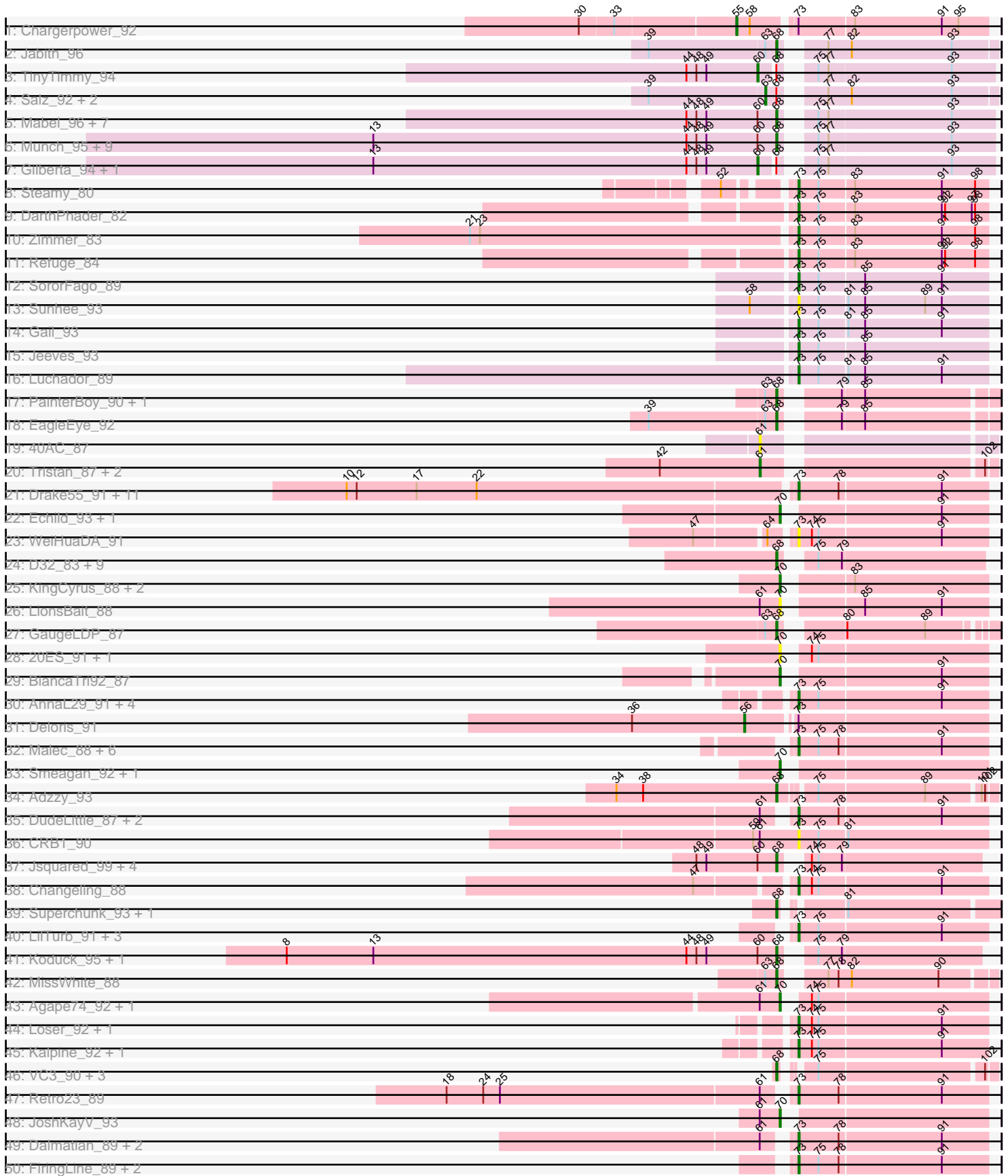
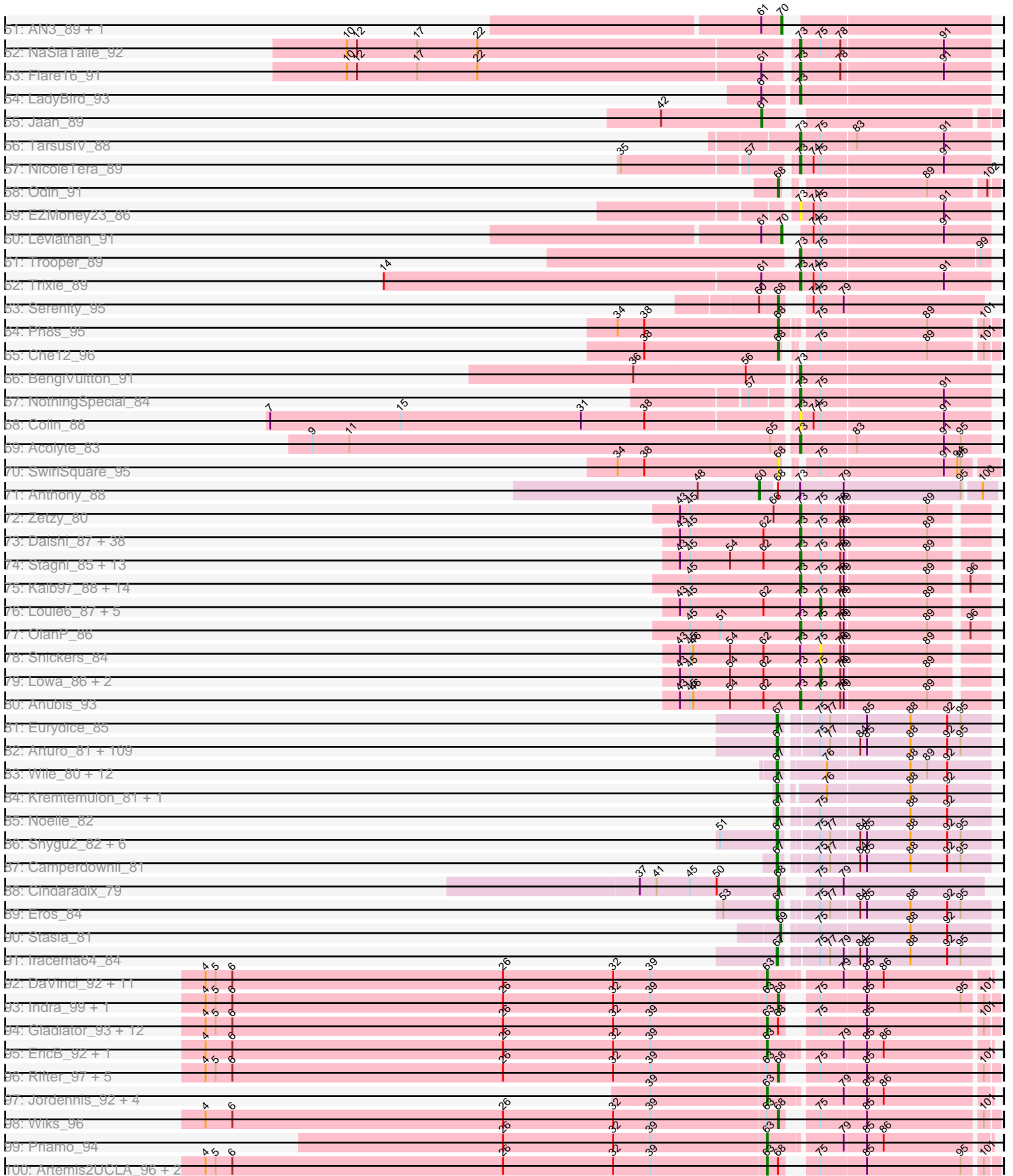


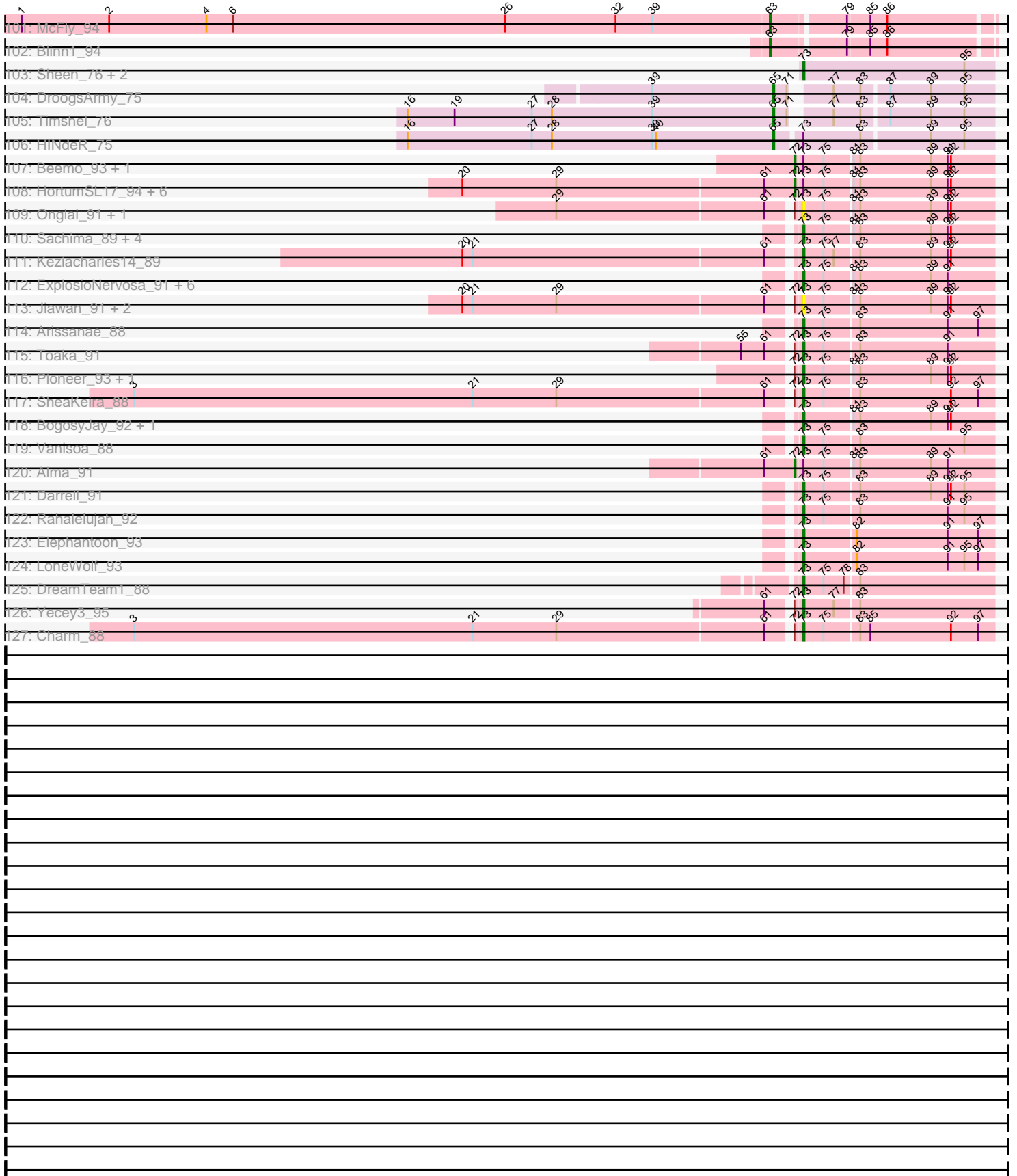
Pham 217481



Pham 217481



Pham 217481



Note: Tracks are now grouped by subcluster and scaled. Switching in subcluster is indicated by changes in track color. Track scale is now set by default to display the region 30 bp upstream of start 1 to 30 bp downstream of the last possible start. If this default region is judged to be packed too tightly with annotated starts, the track will be further scaled to only show that region of the ORF with annotated starts. This action will be indicated by adding "Zoomed" to the title. For starts, yellow indicates the location of called starts comprised solely of Glimmer/GeneMark auto-annotations, green indicates the location of called starts with at least 1 manual gene annotation.

Pham 217481 Report

This analysis was run 03/28/25 on database version 593.

Pham number 217481 has 466 members, 47 are drafts.

Phages represented in each track:

- Track 1 : Chargerpower_92
- Track 2 : Jabith_96
- Track 3 : TinyTimmy_94
- Track 4 : Salz_92, Hutc2_93, Et2Brutus_96
- Track 5 : Mabel_96, Ebony_95, Mulciber_95, Flaverint_97, Petersenfast_90, Snape_96, Bowtie_92, Lucivia_97
- Track 6 : Munch_95, Sham4_93, Bachome_94, Bud_89, Joselito_94, Timothy_96, Orange_96, Aneem_97, Fibonacci_96, Insomnia_96
- Track 7 : Gilberta_94, MaCh_96
- Track 8 : Steamy_80
- Track 9 : DarthPhader_82
- Track 10 : Zimmer_83
- Track 11 : Refuge_84
- Track 12 : SororFago_89
- Track 13 : Sunhee_93
- Track 14 : Gail_93
- Track 15 : Jeeves_93
- Track 16 : Luchador_89
- Track 17 : PainterBoy_90, Lucyedi_91
- Track 18 : EagleEye_92
- Track 19 : 40AC_87
- Track 20 : Tristan_87, Bactobuster_83, Landor_88
- Track 21 : Drake55_91, Centaur_91, Piro94_89, HarryHoudini_90, Sknot_91, Baehexic_90, WideWale_92, Equemioh13_91, Updawg_92, MiculUcigas_91, Terrific_92, Gratitude_89
- Track 22 : Echild_93, Benvolio_88
- Track 23 : WeiHuaDA_91
- Track 24 : D32_83, Naji_84, D29_87, Pomar16_95, Duplo_96, Kerberos_95, StarStuff_95, Travvers_95, Tomathan_95, DBQu4n_95
- Track 25 : KingCyrus_88, ChipMunk_90, EvilGenius_89
- Track 26 : LionsBait_88
- Track 27 : GaugeLDP_87
- Track 28 : 20ES_91, First_0090
- Track 29 : BiancaTri92_87
- Track 30 : AnnaL29_91, Miko_86, BobSwaget_84, Rachaly_87, Lokk_85
- Track 31 : Deloris_91

- Track 32 : Malec_88, SnapTap_89, Larenn_88, Crucio_89, Power_89, Georgie2_91, SweetiePie_89
- Track 33 : Smeagan_92, Jerm_91
- Track 34 : Adzzy_93
- Track 35 : DudeLittle_87, Anselm_91, QueenB2_87
- Track 36 : CRB1_90
- Track 37 : Jsquared_99, MajorMajor_92, Bradman_98, TipsytheTRex_92, Quokka_97
- Track 38 : Changeling_88
- Track 39 : Superchunk_93, Caraxes_94
- Track 40 : LilTurb_91, Turbido_91, AbbyPaige_92, Whabigail7_89
- Track 41 : Koduck_95, L5_87
- Track 42 : MissWhite_88
- Track 43 : Agape74_92, Dignity_92
- Track 44 : Loser_92, RedRock_90
- Track 45 : Kalpine_92, ArcherNM_86
- Track 46 : VC3_90, ANI8_91, C3_84, AN9_91
- Track 47 : Retro23_89
- Track 48 : JoshKayV_93
- Track 49 : Dalmatian_89, Heffalump_86, Fameo_88
- Track 50 : FiringLine_89, QueenBeesly_89, SemperFi_89
- Track 51 : AN3_89, VA6_89
- Track 52 : NaSiaTalie_92
- Track 53 : Flare16_91
- Track 54 : LadyBird_93
- Track 55 : Jaan_89
- Track 56 : TarsusIV_88
- Track 57 : NicoleTera_89
- Track 58 : Odin_91
- Track 59 : EZMoney23_86
- Track 60 : Leviathan_91
- Track 61 : Trooper_89
- Track 62 : Trixie_89
- Track 63 : Serenity_95
- Track 64 : Ph8s_95
- Track 65 : Che12_96
- Track 66 : BengiVuitton_91
- Track 67 : NothingSpecial_84
- Track 68 : Colin_88
- Track 69 : Acolyte_83
- Track 70 : SwirlSquare_95
- Track 71 : Anthony_88
- Track 72 : Zetzy_80
- Track 73 : Daishi_87, EpicPhail_89, LugYA_91, Grum1_88, JHC117_83, SoYo_85, P28Green_88, Phoebe_89, Grif_86, TinyPebbles_84, Tiffany_87, KADY_85, Sabinator_86, Ollie_89, PGHhamlin_91, Marie_86, Dieselweasel_89, JenCasNa_89, Spike509_89, LarryKay_88, Wooldri_90, Taurus_89, SoilDragon_89, Bxz2_83, Penny1_88, Soshari_90, Methuselah_81, Cullens_89, Misomonster_84, MoneyMay_88, AgronaGT15_80, PotatoSplit_89, MarQuardt_88, Jobu08_84, Colbster_84, Aglet_89, GingkoMaracino_88, Fernando_89, Vix_84
- Track 74 : Stagni_85, Mainiac_88, Sabia_86, Watson_88, Pembroke_89, BreSam8_89, Malinsilva_92, Bigflo_85, Grub_86, MadMarie_86, GtownJaz_89, LBerry_90, Microwolf_84, DaHudson_88

- Track 75 : Kalb97_88, Heliosoles_85, PurpleHaze_82, HaveUMetTed_88, Groupthink_88, PhishRPhriends_84, Pawn_86, Marius_88, Gemma_85, Manu_87, Kalnoky_88, Phranny_80, Calvinny_85, JeppNRM_88, Reba_83
- Track 76 : Louie6_87, Beauxregard13_87, Hercules11_88, HashRod_89, Rummer_87, BuzzBuzz_82
- Track 77 : OlanP_86
- Track 78 : Snickers_84
- Track 79 : Lowa_86, StepMih_89, Lilith_86
- Track 80 : Anubis_93
- Track 81 : Eurydice_85
- Track 82 : Arturo_81, Happiness_83, Burger_82, Romney_83, Pumbaa_84, LochMonster_85, NorthStar_81, Koreni_83, Taquarus_83, Chaph_84, Mazhar510_84, JoongJeon_83, Melvin_86, Bombshell_84, OKaNui_83, Millski_83, Connomayer_84, Wilbur_84, BangNhom_81, Albee_84, Phelipe_84, Alberto7_85, Eapen_84, Deano_81, Lemur_84, Obama12_85, Huxley_73, Thanksgivukkah_83, Funston_83, LittleGuy_84, NotAPhaseMom_83, Phighter1804_84, Polymorphads_85, Florean_84, MeeZee_83, Eris_83, Nebs_85, CentreCat_84, Caelakin_82, SheldonCooper_84, Lorenzo_84, Cerulean_86, Relief_83, Bruiser_83, Nyxis_83, Medusa_83, HamSlice_80, Scamp_84, Annyong_83, Flux_85, DirtyDunning_83, BubbleTrouble_83, Baby16_84, Eagle_83, YoSam321_84, ChampagnePapi_87, Kyee_84, Sparxx_85, Palestino_83, Phontbonne_84, Maverick_83, SenorClean_79, Commander_82, Spino_83, TiroTheta9_83, Roosevelt_82, PeterPeter_84, Ulysses_83, Ruin_84, Cocoaberry_84, TygerBlood_84, Avle17_84, Pipcraft_80, Shaka_82, JetBlade_85, KFPoly_83, Phacado_84, Sabertooth_84, BellusTerra_84, LappelDuVide_84, Rosa24_80, Peaches_82, Tinybot_83, Holli_83, Ohfah_85, Kratak_83, Abdiel_83, Citius_84, Broseidon_84, Koan_79, Maxo_86, Kamy_83, Gadost_84, Iceman_82, Nemo27_83, ICleared_83, Kingmustik0402_84, Jaykayelowell_81, TinaFeyge_82, Wander_84, TroyPia_85, Dhanush_84, LittleB_84, Houdini22_83, Morrow_86, Blackmoor_83, Bartimeaus_84, Lunsford_84, Clarenza_83, Skipitt_83
- Track 83 : Wile_80, Perplexer_81, Wizard007_81, Druantia_83, Bumblebee11_80, Backyardigan_79, AbbysRanger_81, Katalie136_81, PetiteSangsue_81, Morpher26_81, Badger_80, Achebe_80, Cici_81
- Track 84 : Kremtemulon_81, Cintron_84
- Track 85 : Noelle_82
- Track 86 : Shygu2_82, Miramae_84, Stink_84, Mundrea_82, Xena_80, Datway_81, AvatarAhPeg_84
- Track 87 : Camperdownii_81
- Track 88 : Cindaradix_79
- Track 89 : Eros_84
- Track 90 : Stasia_81
- Track 91 : Iracema64_84
- Track 92 : DaVinci_92, VohminGhazi_94, Kazan_95, SmellyB_94, Chartreuse_92, Pmask_93, Candra_92, Newrala_93, Neeharika16_93, SuperAwesome_94, Cookiedough_94, Hoot_89
- Track 93 : Indra_99, Roksolana_97
- Track 94 : Gladiator_93, Lilbunny_93, Blue7_98, Garak_98, Zaka_97, BlessJoy_96, Yokurt_96, ToneTone_93, Temprado_98, Hammer_97, Hexamo_96, CloudWang3_97, Helmet_98
- Track 95 : EricB_92, BABullseye_87
- Track 96 : Rifter_97, Jeffabunny_85, Gruunaga_97, Koko_98, Zulu_98, Tucker_97
- Track 97 : Jordennis_92, Kipper29_94, JewelBug_86, Dorothea_94, Polyphemos_86

- Track 98 : Wiks_96
- Track 99 : Priamo_94
- Track 100 : Artemis2UCLA_96, Isiphiwo_91, SuperCallie99_91
- Track 101 : McFly_94
- Track 102 : Blinn1_94
- Track 103 : Sheen_76, Toro_77, FlyCatcher_79
- Track 104 : DroogsArmy_75
- Track 105 : Timshel_76
- Track 106 : HINdeR_75
- Track 107 : Beemo_93, Lilleskat_90
- Track 108 : HortumSL17_94, Tubs_93, Aliter_86, Catalina_95, Phaeder_93, Myxus_93, PackMan_88
- Track 109 : Onglai_91, Horex_92
- Track 110 : Sachima_89, Conquerage_91, Scherzo_91, Ugenie5_80, EdogawaKiddo_92
- Track 111 : Keziacharles14_89
- Track 112 : ExplosioNervosa_91, Fayely_91, Eidsmoe_91, Priya_91, Spouty_91, EmyBug_90, Qobbit_91
- Track 113 : Jiawan_91, Hanray_91, RyeScarlet_94
- Track 114 : Arissanae_88
- Track 115 : Toaka_91
- Track 116 : Pioneer_93, Phonnegut_93
- Track 117 : SheaKeira_88
- Track 118 : BogosyJay_92, Maminiaina_92
- Track 119 : Vanisoa_88
- Track 120 : Alma_91
- Track 121 : Darrell_91
- Track 122 : Rahalelujah_92
- Track 123 : Elephantoan_93
- Track 124 : LoneWolf_93
- Track 125 : DreamTeam1_88
- Track 126 : Yecey3_95
- Track 127 : Charm_88

Summary of Final Annotations (See graph section above for start numbers):

The start number called the most often in the published annotations is 73, it was called in 153 of the 419 non-draft genes in the pham.

Genes that call this "Most Annotated" start:

- AbbyPaige_92, Acolyte_83, Aglet_89, AgronaGT15_80, AnnaL29_91, Anselm_91, Anubis_93, ArcherNM_86, Arissanae_88, Baehexic_90, BengiVuitton_91, Bigflo_85, BobSwaget_84, BogosyJay_92, BreSam8_89, Bxz2_83, CRB1_90, Calvinny_85, Centaur_91, Changeling_88, Charm_88, Colbster_84, Colin_88, Conquerage_91, Crucio_89, Cullens_89, DaHudson_88, Daishi_87, Dalmatian_89, Darrell_91, DarthPhader_82, Dieselweasel_89, Drake55_91, DreamTeam1_88, DudeLittle_87, EZMoney23_86, EdogawaKiddo_92, Eidsmoe_91, Elephantoan_93, EmyBug_90, EpicPhail_89, Equemioh13_91, ExplosioNervosa_91, Fameo_88, Fayely_91, Fernando_89, FiringLine_89, Flare16_91, FlyCatcher_79, Gail_93, Gemma_85, Georgie2_91, GingkoMaracino_88, Gratitude_89, Grif_86, Groupthink_88, Grub_86,

Grum1_88, GtownJaz_89, Hanray_91, HarryHoudini_90, HaveUMetTed_88, Heffalump_86, Heliosoles_85, Halex_92, JHC117_83, Jeeves_93, JenCasNa_89, JeppNRM_88, Jiawan_91, Jobu08_84, KADY_85, Kalb97_88, Kalnoky_88, Kalpine_92, Keziacharles14_89, LBerry_90, LadyBird_93, Larenn_88, LarryKay_88, LilTurb_91, Lökk_85, LoneWolf_93, Loser_92, Luchador_89, LugYA_91, MadMarie_86, Mainiac_88, Malec_88, Malinsilva_92, Maminiaiina_92, Manu_87, MarQuardt_88, Marie_86, Marius_88, Methuselah_81, Microwolf_84, MiculUcigas_91, Miko_86, Misomonster_84, MoneyMay_88, NaSiaTalie_92, NicoleTera_89, NothingSpecial_84, OlanP_86, Ollie_89, Onglai_91, P28Green_88, PGHhamlin_91, Pawn_86, Pembroke_89, Penny1_88, PhishRPhriends_84, Phoebe_89, Phonnegut_93, Phranny_80, Pioneer_93, Piro94_89, PotatoSplit_89, Power_89, Priya_91, PurpleHaze_82, Qobbit_91, QueenB2_87, QueenBeesly_89, Rachaly_87, Rahalelujah_92, Reba_83, RedRock_90, Refuge_84, Retro23_89, RyeScarlet_94, Sabia_86, Sabinator_86, Sachima_89, Scherzo_91, SemperFi_89, SheaKeira_88, Sheen_76, Sknot_91, SnapTap_89, SoYo_85, SoilDragon_89, SororFago_89, Soshari_90, Spike509_89, Spouty_91, Stagni_85, Steamy_80, Sunhee_93, SweetiePie_89, TarsusIV_88, Taurus_89, Terrific_92, Tiffany_87, TinyPebbles_84, Toaka_91, Toro_77, Trixie_89, Trooper_89, Turbido_91, Ugenie5_80, Updawg_92, Vanisoa_88, Vix_84, Watson_88, WeiHuaDA_91, Whabigail7_89, WideWale_92, Wooldri_90, Yecey3_95, Zetzy_80, Zimmer_83,

Genes that have the "Most Annotated" start but do not call it:

- Aliter_86, Alma_91, Anthony_88, Beauxregard13_87, Beemo_93, BuzzBuzz_82, Catalina_95, Chargerpower_92, Deloris_91, HINdeR_75, HashRod_89, Hercules11_88, HortumSL17_94, Lilith_86, Lilleskat_90, Louie6_87, Iowa_86, Myxus_93, PackMan_88, Phaeder_93, Rummer_87, Snickers_84, StepMih_89, Tubs_93,

Genes that do not have the "Most Annotated" start:

- 20ES_91, 40AC_87, AN3_89, AN9_91, ANI8_91, AbbysRanger_81, Abdiel_83, Achebe_80, Adzzy_93, Agape74_92, Albee_84, Alberto7_85, Aneem_97, Annyong_83, Artemis2UCLA_96, Arturo_81, AvatarAhPeg_84, Avle17_84, BABullseye_87, Baby16_84, Bachome_94, Backyardigan_79, Bactobuster_83, Badger_80, BangNhom_81, Bartimeaus_84, BellusTerra_84, Benvolio_88, BiancaTri92_87, Blackmoor_83, BlessJoy_96, Blinn1_94, Blue7_98, Bombshell_84, Bowtie_92, Bradman_98, Broseidon_84, Bruiser_83, BubbleTrouble_83, Bud_89, Bumblebee11_80, Burger_82, C3_84, Caelakin_82, Camperdownii_81, Candra_92, Caraxes_94, CentreCat_84, Cerulean_86, ChampagnePapi_87, Chaph_84, Chartreuse_92, Che12_96, ChipMunk_90, Cici_81, Cindaradix_79, Cintron_84, Citius_84, Clarenza_83, CloudWang3_97, Cocoaberry_84, Commander_82, Connomayer_84, Cookiedough_94, D29_87, D32_83, DBQu4n_95, DaVinci_92, Datway_81, Deano_81, Dhanush_84, Dignity_92, DirtyDunning_83, Dorothea_94, DroogsArmy_75, Druantia_83, Duplo_96, EagleEye_92, Eagle_83, Eapen_84, Ebony_95, Echild_93, EricB_92, Eris_83, Eros_84, Et2Brutus_96, Eurydice_85, EvilGenius_89, Fibonacci_96, First_0090, Flaverint_97, Florean_84, Flux_85, Funston_83, Gadost_84, Garak_98, GaugeLDP_87, Gilberta_94, Gladiator_93, Gruunaga_97, HamSlice_80, Hammer_97, Happiness_83, Helmet_98, Hexamo_96, Holli_83, Hoot_89, Houdini22_83, Hutc2_93, Huxley_73, ICleared_83, Iceman_82, Indra_99, Insomnia_96, Iracema64_84, Isiphiwo_91, Jaan_89, Jabith_96, Jaykayelowell_81, Jeffabunny_85, Jerm_91, JetBlade_85, JewelBug_86, JoongJeon_83, Jordennis_92, Joselito_94, JoshKayV_93, Jsquared_99, KFPoly_83, Kamy_83, Katalie136_81, Kazan_95, Kerberos_95, KingCyrus_88, Kingmustik0402_84, Kipper29_94, Koan_79, Koduck_95, Koko_98, Koreni_83,

Kratark_83, Kremtemulon_81, Kyee_84, L5_87, Landor_88, LappelDuVide_84, Lemur_84, Leviathan_91, Lilbunny_93, LionsBait_88, LittleB_84, LittleGuy_84, LochMonster_85, Lorenzo_84, Lucivia_97, Lucyedi_91, Lunsford_84, MaCh_96, Mabel_96, MajorMajor_92, Maverick_83, Maxo_86, Mazhar510_84, McFly_94, Medusa_83, MeeZee_83, Melvin_86, Millski_83, Miramae_84, MissWhite_88, Morpher26_81, Morrow_86, Mulciber_95, Munch_95, Mundrea_82, Naji_84, Nebs_85, Neeharika16_93, Nemo27_83, Newrala_93, Noelle_82, NorthStar_81, NotAPhaseMom_83, Nyxis_83, OKaNui_83, Obama12_85, Odin_91, Ohfah_85, Orange_96, PainterBoy_90, Palestino_83, Peaches_82, Perplexer_81, PeterPeter_84, Petersenfast_90, PetiteSangsue_81, Ph8s_95, Phacado_84, Phelipe_84, Phighter1804_84, Phontbonne_84, Pipcraft_80, Pmask_93, Polymorphads_85, Polyphemus_86, Pomar16_95, Priamo_94, Pumbaa_84, Quokka_97, Relief_83, Rifter_97, Roksolana_97, Romney_83, Roosevelt_82, Rosa24_80, Ruin_84, Sabertooth_84, Salz_92, Scamp_84, SeniorClean_79, Serenity_95, Shaka_82, Sham4_93, SheldonCooper_84, Shygu2_82, Skipitt_83, Smeagan_92, SmellyB_94, Snape_96, Sparxx_85, Spino_83, StarStuff_95, Stasia_81, Stink_84, SuperAwesome_94, SuperCallie99_91, Superchunk_93, SwirlSquare_95, Taquarus_83, Temprado_98, Thanksgivukkah_83, Timothy_96, Timshel_76, TinaFeyge_82, TinyTimmy_94, Tinybot_83, TipsytheTRex_92, TiroTheta9_83, Tomathan_95, ToneTone_93, Travvers_95, Tristan_87, TroyPia_85, Tucker_97, TygerBlood_84, Ulysses_83, VA6_89, VC3_90, VohminGhazi_94, Wander_84, Wiks_96, Wilbur_84, Wile_80, Wizard007_81, Xena_80, YoSam321_84, Yokurt_96, Zaka_97, Zulu_98,

Summary by start number:

Start 55:

- Found in 2 of 466 (0.4%) of genes in pham
- Manual Annotations of this start: 1 of 419
- Called 50.0% of time when present
- Phage (with cluster) where this start called: Chargerpower_92 (A),

Start 56:

- Found in 2 of 466 (0.4%) of genes in pham
- Manual Annotations of this start: 1 of 419
- Called 50.0% of time when present
- Phage (with cluster) where this start called: Deloris_91 (A2),

Start 60:

- Found in 30 of 466 (6.4%) of genes in pham
- Manual Annotations of this start: 4 of 419
- Called 13.3% of time when present
- Phage (with cluster) where this start called: Anthony_88 (A20), Gilberta_94 (A11), MaCh_96 (A11), TinyTimmy_94 (A11),

Start 61:

- Found in 41 of 466 (8.8%) of genes in pham
- Manual Annotations of this start: 3 of 419
- Called 12.2% of time when present
- Phage (with cluster) where this start called: 40AC_87 (A17), Bactobuster_83 (A2), Jaan_89 (A2), Landor_88 (A2), Tristan_87 (A2),

Start 63:

- Found in 56 of 466 (12.0%) of genes in pham
- Manual Annotations of this start: 34 of 419
- Called 73.2% of time when present
- Phage (with cluster) where this start called: Artemis2UCLA_96 (A6), BABullseye_87 (A6), BlessJoy_96 (A6), Blinn1_94 (A6), Blue7_98 (A6), Candra_92 (A6), Chartreuse_92 (A6), CloudWang3_97 (A6), Cookiedough_94 (A6), DaVinci_92 (A6), Dorothea_94 (A6), EricB_92 (A6), Et2Brutus_96 (A11), Garak_98 (A6), Gladiator_93 (A6), Hammer_97 (A6), Helmet_98 (A6), Hexamo_96 (A6), Hoot_89 (A6), Hutc2_93 (A11), Isiphiwo_91 (A6), JewelBug_86 (A6), Jordennis_92 (A6), Kazan_95 (A6), Kipper29_94 (A6), Lilbunny_93 (A6), McFly_94 (A6), Neeharika16_93 (A6), Newrala_93 (A6), Pmask_93 (A6), Polyphemus_86 (A6), Priamo_94 (A6), Salz_92 (A11), SmellyB_94 (A6), SuperAwesome_94 (A6), SuperCallie99_91 (A6), Temprado_98 (A6), ToneTone_93 (A6), VohminGhazi_94 (A6), Yokurt_96 (A6), Zaka_97 (A6),

Start 65:

- Found in 4 of 466 (0.9%) of genes in pham
- Manual Annotations of this start: 3 of 419
- Called 75.0% of time when present
- Phage (with cluster) where this start called: DroogsArmy_75 (A7), HINdeR_75 (A7), Timshel_76 (A7),

Start 67:

- Found in 137 of 466 (29.4%) of genes in pham
- Manual Annotations of this start: 133 of 419
- Called 100.0% of time when present
- Phage (with cluster) where this start called: AbbysRanger_81 (A4), Abdiel_83 (A4), Achebe_80 (A4), Albee_84 (A4), Alberto7_85 (A4), Annyong_83 (A4), Arturo_81 (A4), AvatarAhPeg_84 (A4), Avle17_84 (A4), Baby16_84 (A4), Backyardigan_79 (A4), Badger_80 (A4), BangNhom_81 (A4), Bartimeaus_84 (A4), BellusTerra_84 (A4), Blackmoor_83 (A4), Bombshell_84 (A4), Broseidon_84 (A4), Bruiser_83 (A4), BubbleTrouble_83 (A4), Bumblebee11_80 (A4), Burger_82 (A4), Caelakin_82 (A4), Camperdownii_81 (A4), CentreCat_84 (A4), Cerulean_86 (A4), ChampagnePapi_87 (A4), Chaph_84 (A4), Cici_81 (A4), Cintron_84 (A4), Citius_84 (A4), Clarenza_83 (A4), Cocoaberry_84 (A4), Commander_82 (A4), Connomayer_84 (A4), Datway_81 (A4), Deano_81 (A4), Dhanush_84 (A4), DirtyDunning_83 (A4), Druantia_83 (A4), Eagle_83 (A4), Eapen_84 (A4), Eris_83 (A4), Eros_84 (A4), Eurydice_85 (A4), Florean_84 (A4), Flux_85 (A4), Funston_83 (A4), Gadost_84 (A4), HamSlice_80 (A4), Happiness_83 (A4), Holli_83 (A4), Houdini22_83 (A4), Huxley_73 (A4), ICleared_83 (A4), Iceman_82 (A4), Iracema64_84 (A4), Jaykayelowell_81 (A4), JetBlade_85 (A4), JoongJeon_83 (A4), KFPoly_83 (A4), Kamy_83 (A4), Katalie136_81 (A4), Kingmustik0402_84 (A4), Koan_79 (A4), Koreni_83 (A4), Kratark_83 (A4), Kremtemulon_81 (A4), Kyee_84 (A4), LappelDuVide_84 (A4), Lemur_84 (A4), LittleB_84 (A4), LittleGuy_84 (A4), LochMonster_85 (A4), Lorenzo_84 (A4), Lunsford_84 (A4), Maverick_83 (A4), Maxo_86 (A4), Mazhar510_84 (A4), Medusa_83 (A4), MeeZee_83 (A4), Melvin_86 (A4), Millski_83 (A4), Miramae_84 (A4), Morpher26_81 (A4), Morrow_86 (A4), Mundrea_82 (A4), Nebs_85 (A4), Nemo27_83 (A4), Noelle_82 (A4), NorthStar_81 (A4), NotAPhaseMom_83 (A4), Nyxis_83 (A4), OKaNui_83 (A4), Obama12_85 (A4), Ohfah_85 (A4), Palestino_83 (A4), Peaches_82 (A4), Perplexer_81 (A4), PeterPeter_84 (A4), PetiteSangsue_81 (A4), Phacado_84 (A4), Phelipe_84 (A4), Phighter1804_84 (A4), Phontbonne_84 (A4), Pipcraft_80 (A4), Polymorphads_85 (A4), Pumbaa_84 (A4), Relief_83 (A4), Romney_83 (A4), Roosevelt_82 (A4), Rosa24_80 (A4), Ruin_84 (A4), Sabertooth_84

(A4), Scamp_84 (A4), SenorClean_79 (A4), Shaka_82 (A4), SheldonCooper_84 (A4), Shygu2_82 (A4), Skipitt_83 (A4), Sparxx_85 (A4), Spino_83 (A4), Stink_84 (A4), Taquarus_83 (A4), Thanksgivukkah_83 (A4), TinaFeyge_82 (A4), Tinybot_83 (A4), TiroTheta9_83 (A4), TroyPia_85 (A4), TygerBlood_84 (A4), Ulysses_83 (A4), Wander_84 (A4), Wilbur_84 (A4), Wile_80 (A4), Wizard007_81 (A4), Xena_80 (A4), YoSam321_84 (A4),

Start 68:

- Found in 86 of 466 (18.5%) of genes in pham
- Manual Annotations of this start: 55 of 419
- Called 73.3% of time when present
- Phage (with cluster) where this start called: AN9_91 (A2), ANI8_91 (A2), Adzzy_93 (A2), Aneem_97 (A11), Bachome_94 (A11), Bowtie_92 (A11), Bradman_98 (A2), Bud_89 (A11), C3_84 (A2), Caraxes_94 (A2), Che12_96 (A2), Cindaradix_79 (A4), D29_87 (A2), D32_83 (A2), DBQu4n_95 (A2), Duplo_96 (A2), EagleEye_92 (A16), Ebony_95 (A11), Fibonacci_96 (A11), Flaverint_97 (A11), GaugeLDP_87 (A2), Gruunaga_97 (A6), Indra_99 (A6), Insomnia_96 (A11), Jabith_96 (A11), Jeffabunny_85 (A6), Joselito_94 (A11), Jsquared_99 (A2), Kerberos_95 (A2), Koduck_95 (A2), Koko_98 (A6), L5_87 (A2), Lucivia_97 (A11), Lucyedi_91 (A16), Mabel_96 (A11), MajorMajor_92 (A2), MissWhite_88 (A2), Mulciber_95 (A11), Munch_95 (A11), Naji_84 (A2), Odin_91 (A2), Orange_96 (A11), PainterBoy_90 (A16), Petersenfast_90 (A11), Ph8s_95 (A2), Pomar16_95 (A2), Quokka_97 (A2), Rifter_97 (A6), Roksolana_97 (A6), Serenity_95 (A2), Sham4_93 (A11), Snape_96 (A11), StarStuff_95 (A2), Superchunk_93 (A2), SwirlSquare_95 (A2), Timothy_96 (A11), TipsytheTRex_92 (A2), Tomathan_95 (A2), Travvers_95 (A2), Tucker_97 (A6), VC3_90 (A2), Wiks_96 (A6), Zulu_98 (A6),

Start 69:

- Found in 1 of 466 (0.2%) of genes in pham
- Manual Annotations of this start: 1 of 419
- Called 100.0% of time when present
- Phage (with cluster) where this start called: Stasia_81 (A4),

Start 70:

- Found in 17 of 466 (3.6%) of genes in pham
- Manual Annotations of this start: 14 of 419
- Called 100.0% of time when present
- Phage (with cluster) where this start called: 20ES_91 (A2), AN3_89 (A2), Agape74_92 (A2), Benvolio_88 (A2), BiancaTri92_87 (A2), ChipMunk_90 (A2), Dignity_92 (A2), Echild_93 (A2), EvilGenius_89 (A2), First_0090 (A2), Jerm_91 (A2), JoshKayV_93 (A2), KingCyrus_88 (A2), Leviathan_91 (A2), LionsBait_88 (A2), Smeagan_92 (A2), VA6_89 (A2),

Start 72:

- Found in 21 of 466 (4.5%) of genes in pham
- Manual Annotations of this start: 9 of 419
- Called 47.6% of time when present
- Phage (with cluster) where this start called: Aliter_86 (A9), Alma_91 (A9), Beemo_93 (A9), Catalina_95 (A9), HortumSL17_94 (A9), Lilleskat_90 (A9), Myxus_93 (A9), PackMan_88 (A9), Phaeder_93 (A9), Tubs_93 (A9),

Start 73:

- Found in 197 of 466 (42.3%) of genes in pham

- Manual Annotations of this start: 153 of 419
- Called 87.8% of time when present
- Phage (with cluster) where this start called: AbbyPaige_92 (A2), Acolyte_83 (A2), Aglet_89 (A3), AgronaGT15_80 (A3), AnnaL29_91 (A2), Anselm_91 (A2), Anubis_93 (A3), ArcherNM_86 (A2), Arissanae_88 (A9), Baehexic_90 (A2), BengiVuitton_91 (A2), Bigflo_85 (A3), BobSwaget_84 (A2), BogosyJay_92 (A9), BreSam8_89 (A3), Bxz2_83 (A3), CRB1_90 (A2), Calvinny_85 (A3), Centaur_91 (A2), Changeling_88 (A2), Charm_88 (A9), Colbster_84 (A3), Colin_88 (A2), Conquerage_91 (A9), Crucio_89 (A2), Cullens_89 (A3), DaHudson_88 (A3), Daishi_87 (A3), Dalmatian_89 (A2), Darrell_91 (A9), DarthPhader_82 (A12), Dieselweasel_89 (A3), Drake55_91 (A2), DreamTeam1_88 (A9), DudeLittle_87 (A2), EZMoney23_86 (A2), EdogawaKiddo_92 (A9), Eidsmoe_91 (A9), Elephantoon_93 (A9), EmyBug_90 (A9), EpicPhail_89 (A3), Equemioh13_91 (A2), ExplosioNervosa_91 (A9), Fameo_88 (A2), Fayely_91 (A9), Fernando_89 (A3), FiringLine_89 (A2), Flare16_91 (A2), FlyCatcher_79 (A7), Gail_93 (A14), Gemma_85 (A3), Georgie2_91 (A2), GingkoMaracino_88 (A3), Gratitude_89 (A2), Grif_86 (A3), Groupthink_88 (A3), Grub_86 (A3), Grum1_88 (A3), GtownJaz_89 (A3), Hanray_91 (A9), HarryHoudini_90 (A2), HaveUMetTed_88 (A3), Heffalump_86 (A2), Heliosoles_85 (A3), Holes_92 (A9), JHC117_83 (A3), Jeeves_93 (A14), JenCasNa_89 (A3), JeppNRM_88 (A3), Jiawan_91 (A9), Jobu08_84 (A3), KADY_85 (A3), Kalb97_88 (A3), Kalnok_88 (A3), Kalpine_92 (A2), Keziacharles14_89 (A9), LBerry_90 (A3), LadyBird_93 (A2), Larenn_88 (A2), LarryKay_88 (A3), LiITurb_91 (A2), Lokk_85 (A2), LoneWolf_93 (A9), Loser_92 (A2), Luchador_89 (A14), LugYA_91 (A3), MadMarie_86 (A3), Mainiac_88 (A3), Malec_88 (A2), Malinsilva_92 (A3), Maminaiaina_92 (A9), Manu_87 (A3), MarQuardt_88 (A3), Marie_86 (A3), Marius_88 (A3), Methuselah_81 (A3), Microwolf_84 (A3), MiculUcigas_91 (A2), Miko_86 (A2), Misomonster_84 (A3), MoneyMay_88 (A3), NaSiaTalie_92 (A2), NicoleTera_89 (A2), NothingSpecial_84 (A2), OlanP_86 (A3), Ollie_89 (A3), Onglai_91 (A9), P28Green_88 (A3), PGHhamlin_91 (A3), Pawn_86 (A3), Pembroke_89 (A3), Penny1_88 (A3), PhishRPhriends_84 (A3), Phoebe_89 (A3), Phonnegut_93 (A9), Phranny_80 (A3), Pioneer_93 (A9), Piro94_89 (A2), PotatoSplit_89 (A3), Power_89 (A2), Priya_91 (A9), PurpleHaze_82 (A3), Qobbit_91 (A9), QueenB2_87 (A2), QueenBeesly_89 (A2), Rachaly_87 (A2), Rahalelujah_92 (A9), Reba_83 (A3), RedRock_90 (A2), Refuge_84 (A12), Retro23_89 (A2), RyeScarlet_94 (A9), Sabia_86 (A3), Sabinator_86 (A3), Sachima_89 (A9), Scherzo_91 (A9), SemperFi_89 (A2), SheaKeira_88 (A9), Sheen_76 (A7), Sknot_91 (A2), SnapTap_89 (A2), SoYo_85 (A3), SoilDragon_89 (A3), SororFago_89 (A14), Soshari_90 (A3), Spike509_89 (A3), Spouty_91 (A9), Stagni_85 (A3), Steamy_80 (A12), Sunhee_93 (A14), SweetiePie_89 (A2), TarsusIV_88 (A2), Taurus_89 (A3), Terrific_92 (A2), Tiffany_87 (A3), TinyPebbles_84 (A3), Toaka_91 (A9), Toro_77 (A7), Trixie_89 (A2), Trooper_89 (A2), Turbido_91 (A2), Ugenie5_80 (A9), Updawg_92 (A2), Vanisoa_88 (A9), Vix_84 (A3), Watson_88 (A3), WeiHuaDA_91 (A2), Whabigail7_89 (A2), WideWale_92 (A2), Wooldri_90 (A3), Yecey3_95 (A9), Zetzy_80 (A3), Zimmer_83 (A12),

Start 75:

- Found in 363 of 466 (77.9%) of genes in pham
- Manual Annotations of this start: 8 of 419
- Called 2.8% of time when present
- Phage (with cluster) where this start called: Beauxregard13_87 (A3), BuzzBuzz_82 (A3), HashRod_89 (A3), Hercules11_88 (A3), Lilith_86 (A3), Louie6_87 (A3), Lowa_86 (A3), Rummer_87 (A3), Snickers_84 (A3), StepMih_89 (A3),

Summary by clusters:

There are 13 clusters represented in this pham: A20, A, A17, A16, A11, A12, A3, A2, A4, A7, A6, A9, A14,

Info for manual annotations of cluster A:

- Start number 55 was manually annotated 1 time for cluster A.

Info for manual annotations of cluster A11:

- Start number 60 was manually annotated 3 times for cluster A11.
- Start number 63 was manually annotated 3 times for cluster A11.
- Start number 68 was manually annotated 18 times for cluster A11.

Info for manual annotations of cluster A12:

- Start number 73 was manually annotated 4 times for cluster A12.

Info for manual annotations of cluster A14:

- Start number 73 was manually annotated 4 times for cluster A14.

Info for manual annotations of cluster A16:

- Start number 68 was manually annotated 3 times for cluster A16.

Info for manual annotations of cluster A2:

- Start number 56 was manually annotated 1 time for cluster A2.
- Start number 61 was manually annotated 3 times for cluster A2.
- Start number 68 was manually annotated 24 times for cluster A2.
- Start number 70 was manually annotated 14 times for cluster A2.
- Start number 73 was manually annotated 50 times for cluster A2.

Info for manual annotations of cluster A20:

- Start number 60 was manually annotated 1 time for cluster A20.

Info for manual annotations of cluster A3:

- Start number 73 was manually annotated 68 times for cluster A3.
- Start number 75 was manually annotated 8 times for cluster A3.

Info for manual annotations of cluster A4:

- Start number 67 was manually annotated 133 times for cluster A4.
- Start number 68 was manually annotated 1 time for cluster A4.
- Start number 69 was manually annotated 1 time for cluster A4.

Info for manual annotations of cluster A6:

- Start number 63 was manually annotated 31 times for cluster A6.
- Start number 68 was manually annotated 9 times for cluster A6.

Info for manual annotations of cluster A7:

- Start number 65 was manually annotated 3 times for cluster A7.
- Start number 73 was manually annotated 1 time for cluster A7.

Info for manual annotations of cluster A9:

- Start number 72 was manually annotated 9 times for cluster A9.
- Start number 73 was manually annotated 26 times for cluster A9.

Gene Information:

Gene: 20ES_91 Start: 49942, Stop: 49775, Start Num: 70

Candidate Starts for 20ES_91:

(Start: 70 @49942 has 14 MA's), (74, 49930), (Start: 75 @49924 has 8 MA's),

Gene: 40AC_87 Start: 50474, Stop: 50289, Start Num: 61

Candidate Starts for 40AC_87:

(Start: 61 @50474 has 3 MA's),

Gene: AN3_89 Start: 48200, Stop: 48033, Start Num: 70

Candidate Starts for AN3_89:

(Start: 61 @48218 has 3 MA's), (Start: 70 @48200 has 14 MA's),

Gene: AN9_91 Start: 48518, Stop: 48351, Start Num: 68

Candidate Starts for AN9_91:

(Start: 68 @48518 has 55 MA's), (Start: 75 @48500 has 8 MA's), (102, 48359),

Gene: ANI8_91 Start: 48518, Stop: 48351, Start Num: 68

Candidate Starts for ANI8_91:

(Start: 68 @48518 has 55 MA's), (Start: 75 @48500 has 8 MA's), (102, 48359),

Gene: AbbyPaige_92 Start: 50182, Stop: 50015, Start Num: 73

Candidate Starts for AbbyPaige_92:

(Start: 73 @50182 has 153 MA's), (Start: 75 @50164 has 8 MA's), (91, 50056),

Gene: AbbysRanger_81 Start: 48428, Stop: 48249, Start Num: 67

Candidate Starts for AbbysRanger_81:

(Start: 67 @48428 has 133 MA's), (76, 48392), (88, 48320), (89, 48305), (92, 48287),

Gene: Abdiel_83 Start: 48601, Stop: 48425, Start Num: 67

Candidate Starts for Abdiel_83:

(Start: 67 @48601 has 133 MA's), (Start: 75 @48574 has 8 MA's), (77, 48565), (84, 48541), (85, 48535), (88, 48496), (92, 48463), (95, 48451),

Gene: Achebe_80 Start: 48572, Stop: 48393, Start Num: 67

Candidate Starts for Achebe_80:

(Start: 67 @48572 has 133 MA's), (76, 48536), (88, 48464), (89, 48449), (92, 48431),

Gene: Acolyte_83 Start: 49005, Stop: 48838, Start Num: 73

Candidate Starts for Acolyte_83:

(9, 49434), (11, 49401), (Start: 65 @49023 has 3 MA's), (Start: 73 @49005 has 153 MA's), (83, 48957), (91, 48879), (95, 48864),

Gene: Adzzy_93 Start: 49351, Stop: 49175, Start Num: 68

Candidate Starts for Adzzy_93:

(34, 49495), (38, 49471), (Start: 68 @49351 has 55 MA's), (Start: 75 @49324 has 8 MA's), (89, 49231), (101, 49186), (102, 49183),

Gene: Agape74_92 Start: 50158, Stop: 49991, Start Num: 70

Candidate Starts for Agape74_92:

(Start: 61 @50176 has 3 MA's), (Start: 70 @50158 has 14 MA's), (74, 50146), (Start: 75 @50140 has 8 MA's),

Gene: Aglet_89 Start: 48162, Stop: 48004, Start Num: 73

Candidate Starts for Aglet_89:

(43, 48270), (45, 48261), (62, 48195), (Start: 73 @48162 has 153 MA's), (Start: 75 @48144 has 8 MA's), (78, 48126), (79, 48123), (89, 48051),

Gene: AgronaGT15_80 Start: 46139, Stop: 45981, Start Num: 73

Candidate Starts for AgronaGT15_80:

(43, 46247), (45, 46238), (62, 46172), (Start: 73 @46139 has 153 MA's), (Start: 75 @46121 has 8 MA's), (78, 46103), (79, 46100), (89, 46028),

Gene: Albee_84 Start: 48589, Stop: 48413, Start Num: 67

Candidate Starts for Albee_84:

(Start: 67 @48589 has 133 MA's), (Start: 75 @48562 has 8 MA's), (77, 48553), (84, 48529), (85, 48523), (88, 48484), (92, 48451), (95, 48439),

Gene: Alberto7_85 Start: 48926, Stop: 48750, Start Num: 67

Candidate Starts for Alberto7_85:

(Start: 67 @48926 has 133 MA's), (Start: 75 @48899 has 8 MA's), (77, 48890), (84, 48866), (85, 48860), (88, 48821), (92, 48788), (95, 48776),

Gene: Aliter_86 Start: 46943, Stop: 46770, Start Num: 72

Candidate Starts for Aliter_86:

(20, 47228), (29, 47144), (Start: 61 @46961 has 3 MA's), (Start: 72 @46943 has 9 MA's), (Start: 73 @46937 has 153 MA's), (Start: 75 @46919 has 8 MA's), (81, 46895), (83, 46889), (89, 46826), (91, 46811), (92, 46808),

Gene: Alma_91 Start: 49774, Stop: 49601, Start Num: 72

Candidate Starts for Alma_91:

(Start: 61 @49792 has 3 MA's), (Start: 72 @49774 has 9 MA's), (Start: 73 @49768 has 153 MA's), (Start: 75 @49750 has 8 MA's), (81, 49726), (83, 49720), (89, 49657), (91, 49642),

Gene: Aneem_97 Start: 49975, Stop: 49802, Start Num: 68

Candidate Starts for Aneem_97:

(13, 50332), (44, 50050), (48, 50041), (49, 50032), (Start: 60 @49987 has 4 MA's), (Start: 68 @49975 has 55 MA's), (Start: 75 @49957 has 8 MA's), (77, 49948), (93, 49840),

Gene: AnnaL29_91 Start: 50147, Stop: 49980, Start Num: 73

Candidate Starts for AnnaL29_91:

(Start: 73 @50147 has 153 MA's), (Start: 75 @50129 has 8 MA's), (91, 50021),

Gene: Annyong_83 Start: 48634, Stop: 48458, Start Num: 67

Candidate Starts for Annyong_83:

(Start: 67 @48634 has 133 MA's), (Start: 75 @48607 has 8 MA's), (77, 48598), (84, 48574), (85, 48568), (88, 48529), (92, 48496), (95, 48484),

Gene: Anselm_91 Start: 50052, Stop: 49885, Start Num: 73

Candidate Starts for Anselm_91:

(Start: 61 @50070 has 3 MA's), (Start: 73 @50052 has 153 MA's), (78, 50016), (91, 49926),

Gene: Anthony_88 Start: 49680, Stop: 49483, Start Num: 60

Candidate Starts for Anthony_88:

(48, 49734), (Start: 60 @49680 has 4 MA's), (Start: 68 @49668 has 55 MA's), (Start: 73 @49650 has 153 MA's), (79, 49611), (95, 49509), (100, 49494),

Gene: Anubis_93 Start: 48139, Stop: 47981, Start Num: 73

Candidate Starts for Anubis_93:

(43, 48247), (45, 48238), (46, 48235), (54, 48202), (62, 48172), (Start: 73 @48139 has 153 MA's), (Start: 75 @48121 has 8 MA's), (78, 48103), (79, 48100), (89, 48028),

Gene: ArcherNM_86 Start: 49681, Stop: 49514, Start Num: 73

Candidate Starts for ArcherNM_86:

(Start: 73 @49681 has 153 MA's), (74, 49669), (Start: 75 @49663 has 8 MA's), (91, 49555),

Gene: Arissanae_88 Start: 49627, Stop: 49460, Start Num: 73

Candidate Starts for Arissanae_88:

(Start: 73 @49627 has 153 MA's), (Start: 75 @49609 has 8 MA's), (83, 49579), (91, 49501), (97, 49474),

Gene: Artemis2UCLA_96 Start: 48969, Stop: 48793, Start Num: 63

Candidate Starts for Artemis2UCLA_96:

(4, 49470), (5, 49461), (6, 49446), (26, 49203), (32, 49104), (39, 49071), (Start: 63 @48969 has 34 MA's), (Start: 68 @48960 has 55 MA's), (Start: 75 @48942 has 8 MA's), (85, 48903), (95, 48819), (101, 48804),

Gene: Arturo_81 Start: 48717, Stop: 48541, Start Num: 67

Candidate Starts for Arturo_81:

(Start: 67 @48717 has 133 MA's), (Start: 75 @48690 has 8 MA's), (77, 48681), (84, 48657), (85, 48651), (88, 48612), (92, 48579), (95, 48567),

Gene: AvatarAhPeg_84 Start: 48842, Stop: 48666, Start Num: 67

Candidate Starts for AvatarAhPeg_84:

(51, 48893), (Start: 67 @48842 has 133 MA's), (Start: 75 @48815 has 8 MA's), (77, 48806), (84, 48782), (85, 48776), (88, 48737), (92, 48704), (95, 48692),

Gene: Avle17_84 Start: 48583, Stop: 48407, Start Num: 67

Candidate Starts for Avle17_84:

(Start: 67 @48583 has 133 MA's), (Start: 75 @48556 has 8 MA's), (77, 48547), (84, 48523), (85, 48517), (88, 48478), (92, 48445), (95, 48433),

Gene: BABullseye_87 Start: 47107, Stop: 46925, Start Num: 63

Candidate Starts for BABullseye_87:

(4, 47608), (6, 47584), (26, 47341), (32, 47242), (39, 47209), (Start: 63 @47107 has 34 MA's), (79, 47047), (85, 47029), (86, 47014),

Gene: Baby16_84 Start: 48600, Stop: 48424, Start Num: 67

Candidate Starts for Baby16_84:

(Start: 67 @48600 has 133 MA's), (Start: 75 @48573 has 8 MA's), (77, 48564), (84, 48540), (85, 48534), (88, 48495), (92, 48462), (95, 48450),

Gene: Bachome_94 Start: 49023, Stop: 48850, Start Num: 68

Candidate Starts for Bachome_94:

(13, 49380), (44, 49098), (48, 49089), (49, 49080), (Start: 60 @49035 has 4 MA's), (Start: 68 @49023 has 55 MA's), (Start: 75 @49005 has 8 MA's), (77, 48996), (93, 48888),

Gene: Backyardigan_79 Start: 48444, Stop: 48265, Start Num: 67
Candidate Starts for Backyardigan_79:
(Start: 67 @48444 has 133 MA's), (76, 48408), (88, 48336), (89, 48321), (92, 48303),

Gene: Bactobuster_83 Start: 49246, Stop: 49061, Start Num: 61
Candidate Starts for Bactobuster_83:
(42, 49336), (Start: 61 @49246 has 3 MA's), (102, 49069),

Gene: Badger_80 Start: 48410, Stop: 48231, Start Num: 67
Candidate Starts for Badger_80:
(Start: 67 @48410 has 133 MA's), (76, 48374), (88, 48302), (89, 48287), (92, 48269),

Gene: Baehexic_90 Start: 49786, Stop: 49619, Start Num: 73
Candidate Starts for Baehexic_90:
(10, 50179), (12, 50170), (17, 50116), (22, 50062), (Start: 73 @49786 has 153 MA's), (78, 49750), (91, 49660),

Gene: BangNhom_81 Start: 49026, Stop: 48850, Start Num: 67
Candidate Starts for BangNhom_81:
(Start: 67 @49026 has 133 MA's), (Start: 75 @48999 has 8 MA's), (77, 48990), (84, 48966), (85, 48960), (88, 48921), (92, 48888), (95, 48876),

Gene: Bartimeaus_84 Start: 48591, Stop: 48415, Start Num: 67
Candidate Starts for Bartimeaus_84:
(Start: 67 @48591 has 133 MA's), (Start: 75 @48564 has 8 MA's), (77, 48555), (84, 48531), (85, 48525), (88, 48486), (92, 48453), (95, 48441),

Gene: Beauxregard13_87 Start: 48152, Stop: 48012, Start Num: 75
Candidate Starts for Beauxregard13_87:
(43, 48278), (45, 48269), (62, 48203), (Start: 73 @48170 has 153 MA's), (Start: 75 @48152 has 8 MA's), (78, 48134), (79, 48131), (89, 48059),

Gene: Beemo_93 Start: 49776, Stop: 49603, Start Num: 72
Candidate Starts for Beemo_93:
(Start: 72 @49776 has 9 MA's), (Start: 73 @49770 has 153 MA's), (Start: 75 @49752 has 8 MA's), (81, 49728), (83, 49722), (89, 49659), (91, 49644), (92, 49641),

Gene: BellusTerra_84 Start: 48454, Stop: 48278, Start Num: 67
Candidate Starts for BellusTerra_84:
(Start: 67 @48454 has 133 MA's), (Start: 75 @48427 has 8 MA's), (77, 48418), (84, 48394), (85, 48388), (88, 48349), (92, 48316), (95, 48304),

Gene: BengiVuitton_91 Start: 50041, Stop: 49874, Start Num: 73
Candidate Starts for BengiVuitton_91:
(36, 50179), (Start: 56 @50080 has 1 MA's), (Start: 73 @50041 has 153 MA's),

Gene: Benvolio_88 Start: 49668, Stop: 49501, Start Num: 70
Candidate Starts for Benvolio_88:
(Start: 70 @49668 has 14 MA's), (91, 49542),

Gene: BiancaTri92_87 Start: 49502, Stop: 49335, Start Num: 70
Candidate Starts for BiancaTri92_87:

(Start: 70 @49502 has 14 MA's), (91, 49376),

Gene: Bigflo_85 Start: 48247, Stop: 48089, Start Num: 73

Candidate Starts for Bigflo_85:

(43, 48355), (45, 48346), (54, 48310), (62, 48280), (Start: 73 @48247 has 153 MA's), (Start: 75 @48229 has 8 MA's), (78, 48211), (79, 48208), (89, 48136),

Gene: Blackmoor_83 Start: 48591, Stop: 48415, Start Num: 67

Candidate Starts for Blackmoor_83:

(Start: 67 @48591 has 133 MA's), (Start: 75 @48564 has 8 MA's), (77, 48555), (84, 48531), (85, 48525), (88, 48486), (92, 48453), (95, 48441),

Gene: BlessJoy_96 Start: 49493, Stop: 49317, Start Num: 63

Candidate Starts for BlessJoy_96:

(4, 49994), (5, 49985), (6, 49970), (26, 49727), (32, 49628), (39, 49595), (Start: 63 @49493 has 34 MA's), (Start: 68 @49484 has 55 MA's), (Start: 75 @49466 has 8 MA's), (85, 49427), (101, 49328),

Gene: Blinn1_94 Start: 48736, Stop: 48554, Start Num: 63

Candidate Starts for Blinn1_94:

(Start: 63 @48736 has 34 MA's), (79, 48676), (85, 48658), (86, 48643),

Gene: Blue7_98 Start: 49203, Stop: 49027, Start Num: 63

Candidate Starts for Blue7_98:

(4, 49704), (5, 49695), (6, 49680), (26, 49437), (32, 49338), (39, 49305), (Start: 63 @49203 has 34 MA's), (Start: 68 @49194 has 55 MA's), (Start: 75 @49176 has 8 MA's), (85, 49137), (101, 49038),

Gene: BobSwaget_84 Start: 47520, Stop: 47353, Start Num: 73

Candidate Starts for BobSwaget_84:

(Start: 73 @47520 has 153 MA's), (Start: 75 @47502 has 8 MA's), (91, 47394),

Gene: BogosyJay_92 Start: 49773, Stop: 49606, Start Num: 73

Candidate Starts for BogosyJay_92:

(Start: 73 @49773 has 153 MA's), (81, 49731), (83, 49725), (89, 49662), (91, 49647), (92, 49644),

Gene: Bombshell_84 Start: 48586, Stop: 48410, Start Num: 67

Candidate Starts for Bombshell_84:

(Start: 67 @48586 has 133 MA's), (Start: 75 @48559 has 8 MA's), (77, 48550), (84, 48526), (85, 48520), (88, 48481), (92, 48448), (95, 48436),

Gene: Bowtie_92 Start: 48582, Stop: 48409, Start Num: 68

Candidate Starts for Bowtie_92:

(44, 48657), (48, 48648), (49, 48639), (Start: 60 @48594 has 4 MA's), (Start: 68 @48582 has 55 MA's), (Start: 75 @48564 has 8 MA's), (77, 48555), (93, 48447),

Gene: Bradman_98 Start: 50337, Stop: 50176, Start Num: 68

Candidate Starts for Bradman_98:

(48, 50403), (49, 50394), (Start: 60 @50349 has 4 MA's), (Start: 68 @50337 has 55 MA's), (74, 50325), (Start: 75 @50319 has 8 MA's), (79, 50298),

Gene: BreSam8_89 Start: 48241, Stop: 48083, Start Num: 73

Candidate Starts for BreSam8_89:

(43, 48349), (45, 48340), (54, 48304), (62, 48274), (Start: 73 @48241 has 153 MA's), (Start: 75 @48223 has 8 MA's), (78, 48205), (79, 48202), (89, 48130),

Gene: Broseidon_84 Start: 48592, Stop: 48416, Start Num: 67

Candidate Starts for Broseidon_84:

(Start: 67 @48592 has 133 MA's), (Start: 75 @48565 has 8 MA's), (77, 48556), (84, 48532), (85, 48526), (88, 48487), (92, 48454), (95, 48442),

Gene: Bruiser_83 Start: 48589, Stop: 48413, Start Num: 67

Candidate Starts for Bruiser_83:

(Start: 67 @48589 has 133 MA's), (Start: 75 @48562 has 8 MA's), (77, 48553), (84, 48529), (85, 48523), (88, 48484), (92, 48451), (95, 48439),

Gene: BubbleTrouble_83 Start: 48616, Stop: 48440, Start Num: 67

Candidate Starts for BubbleTrouble_83:

(Start: 67 @48616 has 133 MA's), (Start: 75 @48589 has 8 MA's), (77, 48580), (84, 48556), (85, 48550), (88, 48511), (92, 48478), (95, 48466),

Gene: Bud_89 Start: 48681, Stop: 48508, Start Num: 68

Candidate Starts for Bud_89:

(13, 49038), (44, 48756), (48, 48747), (49, 48738), (Start: 60 @48693 has 4 MA's), (Start: 68 @48681 has 55 MA's), (Start: 75 @48663 has 8 MA's), (77, 48654), (93, 48546),

Gene: Bumblebee11_80 Start: 48410, Stop: 48231, Start Num: 67

Candidate Starts for Bumblebee11_80:

(Start: 67 @48410 has 133 MA's), (76, 48374), (88, 48302), (89, 48287), (92, 48269),

Gene: Burger_82 Start: 48589, Stop: 48413, Start Num: 67

Candidate Starts for Burger_82:

(Start: 67 @48589 has 133 MA's), (Start: 75 @48562 has 8 MA's), (77, 48553), (84, 48529), (85, 48523), (88, 48484), (92, 48451), (95, 48439),

Gene: BuzzBuzz_82 Start: 48177, Stop: 48037, Start Num: 75

Candidate Starts for BuzzBuzz_82:

(43, 48303), (45, 48294), (62, 48228), (Start: 73 @48195 has 153 MA's), (Start: 75 @48177 has 8 MA's), (78, 48159), (79, 48156), (89, 48084),

Gene: Bxz2_83 Start: 48202, Stop: 48044, Start Num: 73

Candidate Starts for Bxz2_83:

(43, 48310), (45, 48301), (62, 48235), (Start: 73 @48202 has 153 MA's), (Start: 75 @48184 has 8 MA's), (78, 48166), (79, 48163), (89, 48091),

Gene: C3_84 Start: 48518, Stop: 48351, Start Num: 68

Candidate Starts for C3_84:

(Start: 68 @48518 has 55 MA's), (Start: 75 @48500 has 8 MA's), (102, 48359),

Gene: CRB1_90 Start: 50133, Stop: 49966, Start Num: 73

Candidate Starts for CRB1_90:

(59, 50154), (Start: 61 @50148 has 3 MA's), (Start: 73 @50133 has 153 MA's), (Start: 75 @50115 has 8 MA's), (81, 50091),

Gene: Caelakin_82 Start: 48589, Stop: 48413, Start Num: 67

Candidate Starts for Caelakin_82:

(Start: 67 @48589 has 133 MA's), (Start: 75 @48562 has 8 MA's), (77, 48553), (84, 48529), (85, 48523), (88, 48484), (92, 48451), (95, 48439),

Gene: Calvinny_85 Start: 47999, Stop: 47841, Start Num: 73

Candidate Starts for Calvinny_85:

(45, 48098), (Start: 73 @47999 has 153 MA's), (Start: 75 @47981 has 8 MA's), (78, 47963), (79, 47960), (89, 47888), (96, 47858),

Gene: Camperdownii_81 Start: 48032, Stop: 47856, Start Num: 67

Candidate Starts for Camperdownii_81:

(Start: 67 @48032 has 133 MA's), (Start: 75 @48005 has 8 MA's), (77, 47996), (84, 47972), (85, 47966), (88, 47927), (92, 47894), (95, 47882),

Gene: Candra_92 Start: 48815, Stop: 48633, Start Num: 63

Candidate Starts for Candra_92:

(4, 49316), (5, 49307), (6, 49292), (26, 49049), (32, 48950), (39, 48917), (Start: 63 @48815 has 34 MA's), (79, 48755), (85, 48737), (86, 48722),

Gene: Caraxes_94 Start: 49649, Stop: 49476, Start Num: 68

Candidate Starts for Caraxes_94:

(Start: 68 @49649 has 55 MA's), (81, 49607),

Gene: Catalina_95 Start: 49890, Stop: 49717, Start Num: 72

Candidate Starts for Catalina_95:

(20, 50175), (29, 50091), (Start: 61 @49908 has 3 MA's), (Start: 72 @49890 has 9 MA's), (Start: 73 @49884 has 153 MA's), (Start: 75 @49866 has 8 MA's), (81, 49842), (83, 49836), (89, 49773), (91, 49758), (92, 49755),

Gene: Centaur_91 Start: 49653, Stop: 49486, Start Num: 73

Candidate Starts for Centaur_91:

(10, 50046), (12, 50037), (17, 49983), (22, 49929), (Start: 73 @49653 has 153 MA's), (78, 49617), (91, 49527),

Gene: CentreCat_84 Start: 48629, Stop: 48453, Start Num: 67

Candidate Starts for CentreCat_84:

(Start: 67 @48629 has 133 MA's), (Start: 75 @48602 has 8 MA's), (77, 48593), (84, 48569), (85, 48563), (88, 48524), (92, 48491), (95, 48479),

Gene: Cerulean_86 Start: 49027, Stop: 48851, Start Num: 67

Candidate Starts for Cerulean_86:

(Start: 67 @49027 has 133 MA's), (Start: 75 @49000 has 8 MA's), (77, 48991), (84, 48967), (85, 48961), (88, 48922), (92, 48889), (95, 48877),

Gene: ChampagnePapi_87 Start: 49029, Stop: 48853, Start Num: 67

Candidate Starts for ChampagnePapi_87:

(Start: 67 @49029 has 133 MA's), (Start: 75 @49002 has 8 MA's), (77, 48993), (84, 48969), (85, 48963), (88, 48924), (92, 48891), (95, 48879),

Gene: Changeling_88 Start: 50138, Stop: 49971, Start Num: 73

Candidate Starts for Changeling_88:

(47, 50213), (Start: 73 @50138 has 153 MA's), (74, 50126), (Start: 75 @50120 has 8 MA's), (91, 50012),

Gene: Chaph_84 Start: 48600, Stop: 48424, Start Num: 67

Candidate Starts for Chaph_84:

(Start: 67 @48600 has 133 MA's), (Start: 75 @48573 has 8 MA's), (77, 48564), (84, 48540), (85, 48534), (88, 48495), (92, 48462), (95, 48450),

Gene: Chargerpower_92 Start: 48721, Stop: 48509, Start Num: 55

Candidate Starts for Chargerpower_92:

(30, 48856), (33, 48826), (Start: 55 @48721 has 1 MA's), (58, 48709), (Start: 73 @48676 has 153 MA's), (83, 48628), (91, 48550), (95, 48535),

Gene: Charm_88 Start: 49167, Stop: 49000, Start Num: 73

Candidate Starts for Charm_88:

(3, 49752), (21, 49449), (29, 49374), (Start: 61 @49191 has 3 MA's), (Start: 72 @49173 has 9 MA's), (Start: 73 @49167 has 153 MA's), (Start: 75 @49149 has 8 MA's), (83, 49119), (85, 49110), (92, 49038), (97, 49014),

Gene: Chartreuse_92 Start: 48116, Stop: 47934, Start Num: 63

Candidate Starts for Chartreuse_92:

(4, 48617), (5, 48608), (6, 48593), (26, 48350), (32, 48251), (39, 48218), (Start: 63 @48116 has 34 MA's), (79, 48056), (85, 48038), (86, 48023),

Gene: Che12_96 Start: 50039, Stop: 49872, Start Num: 68

Candidate Starts for Che12_96:

(38, 50159), (Start: 68 @50039 has 55 MA's), (Start: 75 @50021 has 8 MA's), (89, 49928), (101, 49883),

Gene: ChipMunk_90 Start: 51108, Stop: 50941, Start Num: 70

Candidate Starts for ChipMunk_90:

(Start: 70 @51108 has 14 MA's), (83, 51060),

Gene: Cici_81 Start: 48423, Stop: 48244, Start Num: 67

Candidate Starts for Cici_81:

(Start: 67 @48423 has 133 MA's), (76, 48387), (88, 48315), (89, 48300), (92, 48282),

Gene: Cindaradix_79 Start: 48799, Stop: 48638, Start Num: 68

Candidate Starts for Cindaradix_79:

(37, 48922), (41, 48907), (45, 48877), (50, 48853), (Start: 68 @48799 has 55 MA's), (Start: 75 @48781 has 8 MA's), (79, 48760),

Gene: Cintron_84 Start: 48705, Stop: 48529, Start Num: 67

Candidate Starts for Cintron_84:

(Start: 67 @48705 has 133 MA's), (76, 48672), (88, 48600), (92, 48567),

Gene: Citius_84 Start: 48610, Stop: 48434, Start Num: 67

Candidate Starts for Citius_84:

(Start: 67 @48610 has 133 MA's), (Start: 75 @48583 has 8 MA's), (77, 48574), (84, 48550), (85, 48544), (88, 48505), (92, 48472), (95, 48460),

Gene: Clarenza_83 Start: 48586, Stop: 48410, Start Num: 67

Candidate Starts for Clarenza_83:

(Start: 67 @48586 has 133 MA's), (Start: 75 @48559 has 8 MA's), (77, 48550), (84, 48526), (85, 48520), (88, 48481), (92, 48448), (95, 48436),

Gene: CloudWang3_97 Start: 49498, Stop: 49322, Start Num: 63

Candidate Starts for CloudWang3_97:

(4, 49999), (5, 49990), (6, 49975), (26, 49732), (32, 49633), (39, 49600), (Start: 63 @49498 has 34 MA's), (Start: 68 @49489 has 55 MA's), (Start: 75 @49471 has 8 MA's), (85, 49432), (101, 49333),

Gene: Cocoaberry_84 Start: 48590, Stop: 48414, Start Num: 67

Candidate Starts for Cocoaberry_84:

(Start: 67 @48590 has 133 MA's), (Start: 75 @48563 has 8 MA's), (77, 48554), (84, 48530), (85, 48524), (88, 48485), (92, 48452), (95, 48440),

Gene: Colbster_84 Start: 48170, Stop: 48012, Start Num: 73

Candidate Starts for Colbster_84:

(43, 48278), (45, 48269), (62, 48203), (Start: 73 @48170 has 153 MA's), (Start: 75 @48152 has 8 MA's), (78, 48134), (79, 48131), (89, 48059),

Gene: Colin_88 Start: 50277, Stop: 50110, Start Num: 73

Candidate Starts for Colin_88:

(7, 50739), (15, 50622), (31, 50460), (38, 50403), (Start: 73 @50277 has 153 MA's), (74, 50265), (Start: 75 @50259 has 8 MA's), (91, 50151),

Gene: Commander_82 Start: 48593, Stop: 48417, Start Num: 67

Candidate Starts for Commander_82:

(Start: 67 @48593 has 133 MA's), (Start: 75 @48566 has 8 MA's), (77, 48557), (84, 48533), (85, 48527), (88, 48488), (92, 48455), (95, 48443),

Gene: Connomayer_84 Start: 48589, Stop: 48413, Start Num: 67

Candidate Starts for Connomayer_84:

(Start: 67 @48589 has 133 MA's), (Start: 75 @48562 has 8 MA's), (77, 48553), (84, 48529), (85, 48523), (88, 48484), (92, 48451), (95, 48439),

Gene: Conquerage_91 Start: 49545, Stop: 49378, Start Num: 73

Candidate Starts for Conquerage_91:

(Start: 73 @49545 has 153 MA's), (Start: 75 @49527 has 8 MA's), (81, 49503), (83, 49497), (89, 49434), (91, 49419), (92, 49416),

Gene: Cookiedough_94 Start: 49426, Stop: 49244, Start Num: 63

Candidate Starts for Cookiedough_94:

(4, 49927), (5, 49918), (6, 49903), (26, 49660), (32, 49561), (39, 49528), (Start: 63 @49426 has 34 MA's), (79, 49366), (85, 49348), (86, 49333),

Gene: Crucio_89 Start: 49901, Stop: 49734, Start Num: 73

Candidate Starts for Crucio_89:

(Start: 73 @49901 has 153 MA's), (Start: 75 @49883 has 8 MA's), (78, 49865), (91, 49775),

Gene: Cullens_89 Start: 48164, Stop: 48006, Start Num: 73

Candidate Starts for Cullens_89:

(43, 48272), (45, 48263), (62, 48197), (Start: 73 @48164 has 153 MA's), (Start: 75 @48146 has 8 MA's), (78, 48128), (79, 48125), (89, 48053),

Gene: D29_87 Start: 46753, Stop: 46589, Start Num: 68

Candidate Starts for D29_87:

(Start: 68 @46753 has 55 MA's), (Start: 75 @46735 has 8 MA's), (79, 46714),

Gene: D32_83 Start: 46753, Stop: 46589, Start Num: 68

Candidate Starts for D32_83:

(Start: 68 @46753 has 55 MA's), (Start: 75 @46735 has 8 MA's), (79, 46714),

Gene: DBQu4n_95 Start: 50368, Stop: 50204, Start Num: 68

Candidate Starts for DBQu4n_95:

(Start: 68 @50368 has 55 MA's), (Start: 75 @50350 has 8 MA's), (79, 50329),

Gene: DaHudson_88 Start: 48240, Stop: 48082, Start Num: 73

Candidate Starts for DaHudson_88:

(43, 48348), (45, 48339), (54, 48303), (62, 48273), (Start: 73 @48240 has 153 MA's), (Start: 75 @48222 has 8 MA's), (78, 48204), (79, 48201), (89, 48129),

Gene: DaVinci_92 Start: 48170, Stop: 47988, Start Num: 63

Candidate Starts for DaVinci_92:

(4, 48671), (5, 48662), (6, 48647), (26, 48404), (32, 48305), (39, 48272), (Start: 63 @48170 has 34 MA's), (79, 48110), (85, 48092), (86, 48077),

Gene: Daishi_87 Start: 47036, Stop: 46878, Start Num: 73

Candidate Starts for Daishi_87:

(43, 47144), (45, 47135), (62, 47069), (Start: 73 @47036 has 153 MA's), (Start: 75 @47018 has 8 MA's), (78, 47000), (79, 46997), (89, 46925),

Gene: Dalmatian_89 Start: 49700, Stop: 49533, Start Num: 73

Candidate Starts for Dalmatian_89:

(Start: 61 @49718 has 3 MA's), (Start: 73 @49700 has 153 MA's), (78, 49664), (91, 49574),

Gene: Darrell_91 Start: 48933, Stop: 48766, Start Num: 73

Candidate Starts for Darrell_91:

(Start: 73 @48933 has 153 MA's), (Start: 75 @48915 has 8 MA's), (83, 48885), (89, 48822), (91, 48807), (92, 48804), (95, 48792),

Gene: DARTHPhader_82 Start: 48629, Stop: 48462, Start Num: 73

Candidate Starts for DARTHPhader_82:

(Start: 73 @48629 has 153 MA's), (Start: 75 @48611 has 8 MA's), (83, 48581), (91, 48503), (92, 48500), (97, 48476), (98, 48473),

Gene: Datway_81 Start: 48400, Stop: 48224, Start Num: 67

Candidate Starts for Datway_81:

(51, 48451), (Start: 67 @48400 has 133 MA's), (Start: 75 @48373 has 8 MA's), (77, 48364), (84, 48340), (85, 48334), (88, 48295), (92, 48262), (95, 48250),

Gene: Deano_81 Start: 48597, Stop: 48421, Start Num: 67

Candidate Starts for Deano_81:

(Start: 67 @48597 has 133 MA's), (Start: 75 @48570 has 8 MA's), (77, 48561), (84, 48537), (85, 48531), (88, 48492), (92, 48459), (95, 48447),

Gene: Deloris_91 Start: 49773, Stop: 49567, Start Num: 56

Candidate Starts for Deloris_91:

(36, 49872), (Start: 56 @49773 has 1 MA's), (Start: 73 @49734 has 153 MA's),

Gene: Dhanush_84 Start: 48592, Stop: 48416, Start Num: 67

Candidate Starts for Dhanush_84:

(Start: 67 @48592 has 133 MA's), (Start: 75 @48565 has 8 MA's), (77, 48556), (84, 48532), (85, 48526), (88, 48487), (92, 48454), (95, 48442),

Gene: Dieselweasel_89 Start: 48168, Stop: 48010, Start Num: 73
Candidate Starts for Dieselweasel_89:
(43, 48276), (45, 48267), (62, 48201), (Start: 73 @48168 has 153 MA's), (Start: 75 @48150 has 8 MA's), (78, 48132), (79, 48129), (89, 48057),

Gene: Dignity_92 Start: 50265, Stop: 50098, Start Num: 70
Candidate Starts for Dignity_92:
(Start: 61 @50283 has 3 MA's), (Start: 70 @50265 has 14 MA's), (74, 50253), (Start: 75 @50247 has 8 MA's),

Gene: DirtyDunning_83 Start: 48601, Stop: 48425, Start Num: 67
Candidate Starts for DirtyDunning_83:
(Start: 67 @48601 has 133 MA's), (Start: 75 @48574 has 8 MA's), (77, 48565), (84, 48541), (85, 48535), (88, 48496), (92, 48463), (95, 48451),

Gene: Dorothea_94 Start: 49418, Stop: 49236, Start Num: 63
Candidate Starts for Dorothea_94:
(39, 49520), (Start: 63 @49418 has 34 MA's), (79, 49358), (85, 49340), (86, 49325),

Gene: Drake55_91 Start: 49565, Stop: 49398, Start Num: 73
Candidate Starts for Drake55_91:
(10, 49958), (12, 49949), (17, 49895), (22, 49841), (Start: 73 @49565 has 153 MA's), (78, 49529), (91, 49439),

Gene: DreamTeam1_88 Start: 49025, Stop: 48858, Start Num: 73
Candidate Starts for DreamTeam1_88:
(Start: 73 @49025 has 153 MA's), (Start: 75 @49007 has 8 MA's), (78, 48989), (83, 48977),

Gene: DroogsArmy_75 Start: 48876, Stop: 48700, Start Num: 65
Candidate Starts for DroogsArmy_75:
(39, 48984), (Start: 65 @48876 has 3 MA's), (71, 48864), (77, 48837), (83, 48813), (87, 48792), (89, 48756), (95, 48726),

Gene: Druantia_83 Start: 48619, Stop: 48440, Start Num: 67
Candidate Starts for Druantia_83:
(Start: 67 @48619 has 133 MA's), (76, 48583), (88, 48511), (89, 48496), (92, 48478),

Gene: DudeLittle_87 Start: 49419, Stop: 49252, Start Num: 73
Candidate Starts for DudeLittle_87:
(Start: 61 @49437 has 3 MA's), (Start: 73 @49419 has 153 MA's), (78, 49383), (91, 49293),

Gene: Duplo_96 Start: 50425, Stop: 50261, Start Num: 68
Candidate Starts for Duplo_96:
(Start: 68 @50425 has 55 MA's), (Start: 75 @50407 has 8 MA's), (79, 50386),

Gene: EZMoney23_86 Start: 48995, Stop: 48828, Start Num: 73
Candidate Starts for EZMoney23_86:
(Start: 73 @48995 has 153 MA's), (74, 48983), (Start: 75 @48977 has 8 MA's), (91, 48869),

Gene: Eagle_83 Start: 48651, Stop: 48475, Start Num: 67
Candidate Starts for Eagle_83:

(Start: 67 @48651 has 133 MA's), (Start: 75 @48624 has 8 MA's), (77, 48615), (84, 48591), (85, 48585), (88, 48546), (92, 48513), (95, 48501),

Gene: EagleEye_92 Start: 50200, Stop: 50030, Start Num: 68

Candidate Starts for EagleEye_92:

(39, 50311), (Start: 63 @50209 has 34 MA's), (Start: 68 @50200 has 55 MA's), (79, 50161), (85, 50143),

Gene: Eapen_84 Start: 48584, Stop: 48408, Start Num: 67

Candidate Starts for Eapen_84:

(Start: 67 @48584 has 133 MA's), (Start: 75 @48557 has 8 MA's), (77, 48548), (84, 48524), (85, 48518), (88, 48479), (92, 48446), (95, 48434),

Gene: Ebony_95 Start: 49546, Stop: 49373, Start Num: 68

Candidate Starts for Ebony_95:

(44, 49621), (48, 49612), (49, 49603), (Start: 60 @49558 has 4 MA's), (Start: 68 @49546 has 55 MA's), (Start: 75 @49528 has 8 MA's), (77, 49519), (93, 49411),

Gene: Echild_93 Start: 49692, Stop: 49525, Start Num: 70

Candidate Starts for Echild_93:

(Start: 70 @49692 has 14 MA's), (91, 49566),

Gene: EdogawaKiddo_92 Start: 49847, Stop: 49680, Start Num: 73

Candidate Starts for EdogawaKiddo_92:

(Start: 73 @49847 has 153 MA's), (Start: 75 @49829 has 8 MA's), (81, 49805), (83, 49799), (89, 49736), (91, 49721), (92, 49718),

Gene: Eidsmoe_91 Start: 49538, Stop: 49371, Start Num: 73

Candidate Starts for Eidsmoe_91:

(Start: 73 @49538 has 153 MA's), (Start: 75 @49520 has 8 MA's), (81, 49496), (83, 49490), (89, 49427), (91, 49412),

Gene: Elephantoon_93 Start: 49660, Stop: 49493, Start Num: 73

Candidate Starts for Elephantoon_93:

(Start: 73 @49660 has 153 MA's), (82, 49615), (91, 49534), (97, 49507),

Gene: EmyBug_90 Start: 49540, Stop: 49373, Start Num: 73

Candidate Starts for EmyBug_90:

(Start: 73 @49540 has 153 MA's), (Start: 75 @49522 has 8 MA's), (81, 49498), (83, 49492), (89, 49429), (91, 49414),

Gene: EpicPhail_89 Start: 48170, Stop: 48012, Start Num: 73

Candidate Starts for EpicPhail_89:

(43, 48278), (45, 48269), (62, 48203), (Start: 73 @48170 has 153 MA's), (Start: 75 @48152 has 8 MA's), (78, 48134), (79, 48131), (89, 48059),

Gene: Equemioh13_91 Start: 49888, Stop: 49721, Start Num: 73

Candidate Starts for Equemioh13_91:

(10, 50281), (12, 50272), (17, 50218), (22, 50164), (Start: 73 @49888 has 153 MA's), (78, 49852), (91, 49762),

Gene: EricB_92 Start: 48315, Stop: 48133, Start Num: 63

Candidate Starts for EricB_92:

(4, 48816), (6, 48792), (26, 48549), (32, 48450), (39, 48417), (Start: 63 @48315 has 34 MA's), (79, 48255), (85, 48237), (86, 48222),

Gene: Eris_83 Start: 48601, Stop: 48425, Start Num: 67

Candidate Starts for Eris_83:

(Start: 67 @48601 has 133 MA's), (Start: 75 @48574 has 8 MA's), (77, 48565), (84, 48541), (85, 48535), (88, 48496), (92, 48463), (95, 48451),

Gene: Eros_84 Start: 48597, Stop: 48421, Start Num: 67

Candidate Starts for Eros_84:

(53, 48645), (Start: 67 @48597 has 133 MA's), (Start: 75 @48570 has 8 MA's), (77, 48561), (84, 48537), (85, 48531), (88, 48492), (92, 48459), (95, 48447),

Gene: Et2Brutus_96 Start: 49835, Stop: 49650, Start Num: 63

Candidate Starts for Et2Brutus_96:

(39, 49937), (Start: 63 @49835 has 34 MA's), (Start: 68 @49826 has 55 MA's), (77, 49799), (82, 49778), (93, 49688),

Gene: Eurydice_85 Start: 48626, Stop: 48450, Start Num: 67

Candidate Starts for Eurydice_85:

(Start: 67 @48626 has 133 MA's), (Start: 75 @48599 has 8 MA's), (77, 48590), (85, 48560), (88, 48521), (92, 48488), (95, 48476),

Gene: EvilGenius_89 Start: 51109, Stop: 50942, Start Num: 70

Candidate Starts for EvilGenius_89:

(Start: 70 @51109 has 14 MA's), (83, 51061),

Gene: ExplosioNervosa_91 Start: 49606, Stop: 49439, Start Num: 73

Candidate Starts for ExplosioNervosa_91:

(Start: 73 @49606 has 153 MA's), (Start: 75 @49588 has 8 MA's), (81, 49564), (83, 49558), (89, 49495), (91, 49480),

Gene: Fameo_88 Start: 49472, Stop: 49305, Start Num: 73

Candidate Starts for Fameo_88:

(Start: 61 @49490 has 3 MA's), (Start: 73 @49472 has 153 MA's), (78, 49436), (91, 49346),

Gene: Fayely_91 Start: 49514, Stop: 49347, Start Num: 73

Candidate Starts for Fayely_91:

(Start: 73 @49514 has 153 MA's), (Start: 75 @49496 has 8 MA's), (81, 49472), (83, 49466), (89, 49403), (91, 49388),

Gene: Fernando_89 Start: 48164, Stop: 48006, Start Num: 73

Candidate Starts for Fernando_89:

(43, 48272), (45, 48263), (62, 48197), (Start: 73 @48164 has 153 MA's), (Start: 75 @48146 has 8 MA's), (78, 48128), (79, 48125), (89, 48053),

Gene: Fibonacci_96 Start: 49829, Stop: 49656, Start Num: 68

Candidate Starts for Fibonacci_96:

(13, 50186), (44, 49904), (48, 49895), (49, 49886), (Start: 60 @49841 has 4 MA's), (Start: 68 @49829 has 55 MA's), (Start: 75 @49811 has 8 MA's), (77, 49802), (93, 49694),

Gene: FiringLine_89 Start: 49997, Stop: 49830, Start Num: 73

Candidate Starts for FiringLine_89:

(Start: 73 @49997 has 153 MA's), (Start: 75 @49979 has 8 MA's), (78, 49961), (91, 49871),

Gene: First_0090 Start: 49845, Stop: 49678, Start Num: 70

Candidate Starts for First_0090:

(Start: 70 @49845 has 14 MA's), (74, 49833), (Start: 75 @49827 has 8 MA's),

Gene: Flare16_91 Start: 49703, Stop: 49536, Start Num: 73

Candidate Starts for Flare16_91:

(10, 50096), (12, 50087), (17, 50033), (22, 49979), (Start: 61 @49727 has 3 MA's), (Start: 73 @49703 has 153 MA's), (78, 49667), (91, 49577),

Gene: Flaverint_97 Start: 49973, Stop: 49800, Start Num: 68

Candidate Starts for Flaverint_97:

(44, 50048), (48, 50039), (49, 50030), (Start: 60 @49985 has 4 MA's), (Start: 68 @49973 has 55 MA's), (Start: 75 @49955 has 8 MA's), (77, 49946), (93, 49838),

Gene: Florean_84 Start: 48588, Stop: 48412, Start Num: 67

Candidate Starts for Florean_84:

(Start: 67 @48588 has 133 MA's), (Start: 75 @48561 has 8 MA's), (77, 48552), (84, 48528), (85, 48522), (88, 48483), (92, 48450), (95, 48438),

Gene: Flux_85 Start: 48587, Stop: 48411, Start Num: 67

Candidate Starts for Flux_85:

(Start: 67 @48587 has 133 MA's), (Start: 75 @48560 has 8 MA's), (77, 48551), (84, 48527), (85, 48521), (88, 48482), (92, 48449), (95, 48437),

Gene: FlyCatcher_79 Start: 49384, Stop: 49214, Start Num: 73

Candidate Starts for FlyCatcher_79:

(Start: 73 @49384 has 153 MA's), (95, 49240),

Gene: Funston_83 Start: 48586, Stop: 48410, Start Num: 67

Candidate Starts for Funston_83:

(Start: 67 @48586 has 133 MA's), (Start: 75 @48559 has 8 MA's), (77, 48550), (84, 48526), (85, 48520), (88, 48481), (92, 48448), (95, 48436),

Gene: Gadost_84 Start: 48590, Stop: 48414, Start Num: 67

Candidate Starts for Gadost_84:

(Start: 67 @48590 has 133 MA's), (Start: 75 @48563 has 8 MA's), (77, 48554), (84, 48530), (85, 48524), (88, 48485), (92, 48452), (95, 48440),

Gene: Gail_93 Start: 49789, Stop: 49622, Start Num: 73

Candidate Starts for Gail_93:

(Start: 73 @49789 has 153 MA's), (Start: 75 @49771 has 8 MA's), (81, 49747), (85, 49732), (91, 49663),

Gene: Garak_98 Start: 49443, Stop: 49267, Start Num: 63

Candidate Starts for Garak_98:

(4, 49944), (5, 49935), (6, 49920), (26, 49677), (32, 49578), (39, 49545), (Start: 63 @49443 has 34 MA's), (Start: 68 @49434 has 55 MA's), (Start: 75 @49416 has 8 MA's), (85, 49377), (101, 49278),

Gene: GaugeLDP_87 Start: 50281, Stop: 50117, Start Num: 68

Candidate Starts for GaugeLDP_87:

(Start: 63 @50290 has 34 MA's), (Start: 68 @50281 has 55 MA's), (80, 50239), (89, 50170),

Gene: Gemma_85 Start: 47996, Stop: 47838, Start Num: 73

Candidate Starts for Gemma_85:

(45, 48095), (Start: 73 @47996 has 153 MA's), (Start: 75 @47978 has 8 MA's), (78, 47960), (79, 47957), (89, 47885), (96, 47855),

Gene: Georgie2_91 Start: 50045, Stop: 49878, Start Num: 73

Candidate Starts for Georgie2_91:

(Start: 73 @50045 has 153 MA's), (Start: 75 @50027 has 8 MA's), (78, 50009), (91, 49919),

Gene: Gilberta_94 Start: 48861, Stop: 48676, Start Num: 60

Candidate Starts for Gilberta_94:

(13, 49206), (44, 48924), (48, 48915), (49, 48906), (Start: 60 @48861 has 4 MA's), (Start: 68 @48849 has 55 MA's), (Start: 75 @48831 has 8 MA's), (77, 48822), (93, 48714),

Gene: GingkoMaracino_88 Start: 48047, Stop: 47889, Start Num: 73

Candidate Starts for GingkoMaracino_88:

(43, 48155), (45, 48146), (62, 48080), (Start: 73 @48047 has 153 MA's), (Start: 75 @48029 has 8 MA's), (78, 48011), (79, 48008), (89, 47936),

Gene: Gladiator_93 Start: 49163, Stop: 48987, Start Num: 63

Candidate Starts for Gladiator_93:

(4, 49664), (5, 49655), (6, 49640), (26, 49397), (32, 49298), (39, 49265), (Start: 63 @49163 has 34 MA's), (Start: 68 @49154 has 55 MA's), (Start: 75 @49136 has 8 MA's), (85, 49097), (101, 48998),

Gene: Gratitude_89 Start: 49888, Stop: 49721, Start Num: 73

Candidate Starts for Gratitude_89:

(10, 50281), (12, 50272), (17, 50218), (22, 50164), (Start: 73 @49888 has 153 MA's), (78, 49852), (91, 49762),

Gene: Grif_86 Start: 48243, Stop: 48085, Start Num: 73

Candidate Starts for Grif_86:

(43, 48351), (45, 48342), (62, 48276), (Start: 73 @48243 has 153 MA's), (Start: 75 @48225 has 8 MA's), (78, 48207), (79, 48204), (89, 48132),

Gene: Groupthink_88 Start: 47998, Stop: 47840, Start Num: 73

Candidate Starts for Groupthink_88:

(45, 48097), (Start: 73 @47998 has 153 MA's), (Start: 75 @47980 has 8 MA's), (78, 47962), (79, 47959), (89, 47887), (96, 47857),

Gene: Grub_86 Start: 48240, Stop: 48082, Start Num: 73

Candidate Starts for Grub_86:

(43, 48348), (45, 48339), (54, 48303), (62, 48273), (Start: 73 @48240 has 153 MA's), (Start: 75 @48222 has 8 MA's), (78, 48204), (79, 48201), (89, 48129),

Gene: Grum1_88 Start: 48169, Stop: 48011, Start Num: 73

Candidate Starts for Grum1_88:

(43, 48277), (45, 48268), (62, 48202), (Start: 73 @48169 has 153 MA's), (Start: 75 @48151 has 8 MA's), (78, 48133), (79, 48130), (89, 48058),

Gene: Gruunaga_97 Start: 49110, Stop: 48943, Start Num: 68

Candidate Starts for Gruunaga_97:

(4, 49620), (5, 49611), (6, 49596), (26, 49353), (32, 49254), (39, 49221), (Start: 63 @49119 has 34 MA's), (Start: 68 @49110 has 55 MA's), (Start: 75 @49092 has 8 MA's), (85, 49053), (101, 48954),

Gene: GtownJaz_89 Start: 48248, Stop: 48090, Start Num: 73

Candidate Starts for GtownJaz_89:

(43, 48356), (45, 48347), (54, 48311), (62, 48281), (Start: 73 @48248 has 153 MA's), (Start: 75 @48230 has 8 MA's), (78, 48212), (79, 48209), (89, 48137),

Gene: HINdeR_75 Start: 48260, Stop: 48075, Start Num: 65

Candidate Starts for HINdeR_75:

(16, 48587), (27, 48476), (28, 48458), (39, 48368), (40, 48365), (Start: 65 @48260 has 3 MA's), (Start: 73 @48239 has 153 MA's), (83, 48188), (89, 48131), (95, 48101),

Gene: HamSlice_80 Start: 48588, Stop: 48412, Start Num: 67

Candidate Starts for HamSlice_80:

(Start: 67 @48588 has 133 MA's), (Start: 75 @48561 has 8 MA's), (77, 48552), (84, 48528), (85, 48522), (88, 48483), (92, 48450), (95, 48438),

Gene: Hammer_97 Start: 48816, Stop: 48640, Start Num: 63

Candidate Starts for Hammer_97:

(4, 49317), (5, 49308), (6, 49293), (26, 49050), (32, 48951), (39, 48918), (Start: 63 @48816 has 34 MA's), (Start: 68 @48807 has 55 MA's), (Start: 75 @48789 has 8 MA's), (85, 48750), (101, 48651),

Gene: Hanray_91 Start: 49835, Stop: 49668, Start Num: 73

Candidate Starts for Hanray_91:

(20, 50126), (21, 50117), (29, 50042), (Start: 61 @49859 has 3 MA's), (Start: 72 @49841 has 9 MA's), (Start: 73 @49835 has 153 MA's), (Start: 75 @49817 has 8 MA's), (81, 49793), (83, 49787), (89, 49724), (91, 49709), (92, 49706),

Gene: Happiness_83 Start: 48612, Stop: 48436, Start Num: 67

Candidate Starts for Happiness_83:

(Start: 67 @48612 has 133 MA's), (Start: 75 @48585 has 8 MA's), (77, 48576), (84, 48552), (85, 48546), (88, 48507), (92, 48474), (95, 48462),

Gene: HarryHoudini_90 Start: 49569, Stop: 49402, Start Num: 73

Candidate Starts for HarryHoudini_90:

(10, 49962), (12, 49953), (17, 49899), (22, 49845), (Start: 73 @49569 has 153 MA's), (78, 49533), (91, 49443),

Gene: HashRod_89 Start: 48173, Stop: 48033, Start Num: 75

Candidate Starts for HashRod_89:

(43, 48299), (45, 48290), (62, 48224), (Start: 73 @48191 has 153 MA's), (Start: 75 @48173 has 8 MA's), (78, 48155), (79, 48152), (89, 48080),

Gene: HaveUMetTed_88 Start: 47986, Stop: 47828, Start Num: 73

Candidate Starts for HaveUMetTed_88:

(45, 48085), (Start: 73 @47986 has 153 MA's), (Start: 75 @47968 has 8 MA's), (78, 47950), (79, 47947), (89, 47875), (96, 47845),

Gene: Heffalump_86 Start: 49940, Stop: 49773, Start Num: 73

Candidate Starts for Heffalump_86:

(Start: 61 @49958 has 3 MA's), (Start: 73 @49940 has 153 MA's), (78, 49904), (91, 49814),

Gene: Heliosoles_85 Start: 48002, Stop: 47844, Start Num: 73

Candidate Starts for Heliosoles_85:

(45, 48101), (Start: 73 @48002 has 153 MA's), (Start: 75 @47984 has 8 MA's), (78, 47966), (79, 47963), (89, 47891), (96, 47861),

Gene: Helmet_98 Start: 49443, Stop: 49267, Start Num: 63

Candidate Starts for Helmet_98:

(4, 49944), (5, 49935), (6, 49920), (26, 49677), (32, 49578), (39, 49545), (Start: 63 @49443 has 34 MA's), (Start: 68 @49434 has 55 MA's), (Start: 75 @49416 has 8 MA's), (85, 49377), (101, 49278),

Gene: Hercules11_88 Start: 48160, Stop: 48020, Start Num: 75

Candidate Starts for Hercules11_88:

(43, 48286), (45, 48277), (62, 48211), (Start: 73 @48178 has 153 MA's), (Start: 75 @48160 has 8 MA's), (78, 48142), (79, 48139), (89, 48067),

Gene: Hexamo_96 Start: 48984, Stop: 48808, Start Num: 63

Candidate Starts for Hexamo_96:

(4, 49485), (5, 49476), (6, 49461), (26, 49218), (32, 49119), (39, 49086), (Start: 63 @48984 has 34 MA's), (Start: 68 @48975 has 55 MA's), (Start: 75 @48957 has 8 MA's), (85, 48918), (101, 48819),

Gene: Horex_92 Start: 49848, Stop: 49681, Start Num: 73

Candidate Starts for Horex_92:

(29, 50055), (Start: 61 @49872 has 3 MA's), (Start: 72 @49854 has 9 MA's), (Start: 73 @49848 has 153 MA's), (Start: 75 @49830 has 8 MA's), (81, 49806), (83, 49800), (89, 49737), (91, 49722), (92, 49719),

Gene: Holli_83 Start: 48379, Stop: 48203, Start Num: 67

Candidate Starts for Holli_83:

(Start: 67 @48379 has 133 MA's), (Start: 75 @48352 has 8 MA's), (77, 48343), (84, 48319), (85, 48313), (88, 48274), (92, 48241), (95, 48229),

Gene: Hoot_89 Start: 46632, Stop: 46450, Start Num: 63

Candidate Starts for Hoot_89:

(4, 47133), (5, 47124), (6, 47109), (26, 46866), (32, 46767), (39, 46734), (Start: 63 @46632 has 34 MA's), (79, 46572), (85, 46554), (86, 46539),

Gene: HortumSL17_94 Start: 49888, Stop: 49715, Start Num: 72

Candidate Starts for HortumSL17_94:

(20, 50173), (29, 50089), (Start: 61 @49906 has 3 MA's), (Start: 72 @49888 has 9 MA's), (Start: 73 @49882 has 153 MA's), (Start: 75 @49864 has 8 MA's), (81, 49840), (83, 49834), (89, 49771), (91, 49756), (92, 49753),

Gene: Houdini22_83 Start: 48590, Stop: 48414, Start Num: 67

Candidate Starts for Houdini22_83:

(Start: 67 @48590 has 133 MA's), (Start: 75 @48563 has 8 MA's), (77, 48554), (84, 48530), (85, 48524), (88, 48485), (92, 48452), (95, 48440),

Gene: Hutc2_93 Start: 48725, Stop: 48540, Start Num: 63

Candidate Starts for Hutc2_93:

(39, 48827), (Start: 63 @48725 has 34 MA's), (Start: 68 @48716 has 55 MA's), (77, 48689), (82, 48668), (93, 48578),

Gene: Huxley_73 Start: 46482, Stop: 46306, Start Num: 67

Candidate Starts for Huxley_73:

(Start: 67 @46482 has 133 MA's), (Start: 75 @46455 has 8 MA's), (77, 46446), (84, 46422), (85, 46416), (88, 46377), (92, 46344), (95, 46332),

Gene: ICleared_83 Start: 48657, Stop: 48481, Start Num: 67

Candidate Starts for ICleared_83:

(Start: 67 @48657 has 133 MA's), (Start: 75 @48630 has 8 MA's), (77, 48621), (84, 48597), (85, 48591), (88, 48552), (92, 48519), (95, 48507),

Gene: Iceman_82 Start: 48879, Stop: 48703, Start Num: 67

Candidate Starts for Iceman_82:

(Start: 67 @48879 has 133 MA's), (Start: 75 @48852 has 8 MA's), (77, 48843), (84, 48819), (85, 48813), (88, 48774), (92, 48741), (95, 48729),

Gene: Indra_99 Start: 49435, Stop: 49268, Start Num: 68

Candidate Starts for Indra_99:

(4, 49945), (5, 49936), (6, 49921), (26, 49678), (32, 49579), (39, 49546), (Start: 63 @49444 has 34 MA's), (Start: 68 @49435 has 55 MA's), (Start: 75 @49417 has 8 MA's), (85, 49378), (95, 49294), (101, 49279),

Gene: Insomnia_96 Start: 50007, Stop: 49834, Start Num: 68

Candidate Starts for Insomnia_96:

(13, 50364), (44, 50082), (48, 50073), (49, 50064), (Start: 60 @50019 has 4 MA's), (Start: 68 @50007 has 55 MA's), (Start: 75 @49989 has 8 MA's), (77, 49980), (93, 49872),

Gene: Iracema64_84 Start: 48853, Stop: 48677, Start Num: 67

Candidate Starts for Iracema64_84:

(Start: 67 @48853 has 133 MA's), (Start: 75 @48826 has 8 MA's), (77, 48817), (79, 48805), (84, 48793), (85, 48787), (88, 48748), (92, 48715), (95, 48703),

Gene: Isiphiwo_91 Start: 48534, Stop: 48358, Start Num: 63

Candidate Starts for Isiphiwo_91:

(4, 49035), (5, 49026), (6, 49011), (26, 48768), (32, 48669), (39, 48636), (Start: 63 @48534 has 34 MA's), (Start: 68 @48525 has 55 MA's), (Start: 75 @48507 has 8 MA's), (85, 48468), (95, 48384), (101, 48369),

Gene: JHC117_83 Start: 48164, Stop: 48006, Start Num: 73

Candidate Starts for JHC117_83:

(43, 48272), (45, 48263), (62, 48197), (Start: 73 @48164 has 153 MA's), (Start: 75 @48146 has 8 MA's), (78, 48128), (79, 48125), (89, 48053),

Gene: Jaan_89 Start: 50876, Stop: 50691, Start Num: 61

Candidate Starts for Jaan_89:

(42, 50966), (Start: 61 @50876 has 3 MA's),

Gene: Jabith_96 Start: 50024, Stop: 49848, Start Num: 68

Candidate Starts for Jabith_96:

(39, 50135), (Start: 63 @50033 has 34 MA's), (Start: 68 @50024 has 55 MA's), (77, 49997), (82, 49976), (93, 49886),

Gene: Jaykayelowell_81 Start: 48582, Stop: 48406, Start Num: 67

Candidate Starts for Jaykayelowell_81:

(Start: 67 @48582 has 133 MA's), (Start: 75 @48555 has 8 MA's), (77, 48546), (84, 48522), (85, 48516), (88, 48477), (92, 48444), (95, 48432),

Gene: Jeeves_93 Start: 48602, Stop: 48435, Start Num: 73

Candidate Starts for Jeeves_93:

(Start: 73 @48602 has 153 MA's), (Start: 75 @48584 has 8 MA's), (85, 48545),

Gene: Jeffabunny_85 Start: 45578, Stop: 45411, Start Num: 68

Candidate Starts for Jeffabunny_85:

(4, 46088), (5, 46079), (6, 46064), (26, 45821), (32, 45722), (39, 45689), (Start: 63 @45587 has 34 MA's), (Start: 68 @45578 has 55 MA's), (Start: 75 @45560 has 8 MA's), (85, 45521), (101, 45422),

Gene: JenCasNa_89 Start: 48164, Stop: 48006, Start Num: 73

Candidate Starts for JenCasNa_89:

(43, 48272), (45, 48263), (62, 48197), (Start: 73 @48164 has 153 MA's), (Start: 75 @48146 has 8 MA's), (78, 48128), (79, 48125), (89, 48053),

Gene: JeppNRM_88 Start: 48000, Stop: 47842, Start Num: 73

Candidate Starts for JeppNRM_88:

(45, 48099), (Start: 73 @48000 has 153 MA's), (Start: 75 @47982 has 8 MA's), (78, 47964), (79, 47961), (89, 47889), (96, 47859),

Gene: Jerm_91 Start: 50120, Stop: 49953, Start Num: 70

Candidate Starts for Jerm_91:

(Start: 70 @50120 has 14 MA's),

Gene: JetBlade_85 Start: 48617, Stop: 48441, Start Num: 67

Candidate Starts for JetBlade_85:

(Start: 67 @48617 has 133 MA's), (Start: 75 @48590 has 8 MA's), (77, 48581), (84, 48557), (85, 48551), (88, 48512), (92, 48479), (95, 48467),

Gene: JewelBug_86 Start: 47111, Stop: 46929, Start Num: 63

Candidate Starts for JewelBug_86:

(39, 47213), (Start: 63 @47111 has 34 MA's), (79, 47051), (85, 47033), (86, 47018),

Gene: Jiawan_91 Start: 49865, Stop: 49698, Start Num: 73

Candidate Starts for Jiawan_91:

(20, 50156), (21, 50147), (29, 50072), (Start: 61 @49889 has 3 MA's), (Start: 72 @49871 has 9 MA's), (Start: 73 @49865 has 153 MA's), (Start: 75 @49847 has 8 MA's), (81, 49823), (83, 49817), (89, 49754), (91, 49739), (92, 49736),

Gene: Jobu08_84 Start: 48074, Stop: 47916, Start Num: 73

Candidate Starts for Jobu08_84:

(43, 48182), (45, 48173), (62, 48107), (Start: 73 @48074 has 153 MA's), (Start: 75 @48056 has 8 MA's), (78, 48038), (79, 48035), (89, 47963),

Gene: JoongJeon_83 Start: 48583, Stop: 48407, Start Num: 67

Candidate Starts for JoongJeon_83:

(Start: 67 @48583 has 133 MA's), (Start: 75 @48556 has 8 MA's), (77, 48547), (84, 48523), (85, 48517), (88, 48478), (92, 48445), (95, 48433),

Gene: Jordennis_92 Start: 49015, Stop: 48833, Start Num: 63

Candidate Starts for Jordennis_92:

(39, 49117), (Start: 63 @49015 has 34 MA's), (79, 48955), (85, 48937), (86, 48922),

Gene: Joselito_94 Start: 49727, Stop: 49554, Start Num: 68

Candidate Starts for Joselito_94:

(13, 50084), (44, 49802), (48, 49793), (49, 49784), (Start: 60 @49739 has 4 MA's), (Start: 68 @49727 has 55 MA's), (Start: 75 @49709 has 8 MA's), (77, 49700), (93, 49592),

Gene: JoshKayV_93 Start: 50578, Stop: 50411, Start Num: 70

Candidate Starts for JoshKayV_93:

(Start: 61 @50596 has 3 MA's), (Start: 70 @50578 has 14 MA's),

Gene: Jsquared_99 Start: 50580, Stop: 50419, Start Num: 68

Candidate Starts for Jsquared_99:

(48, 50646), (49, 50637), (Start: 60 @50592 has 4 MA's), (Start: 68 @50580 has 55 MA's), (74, 50568), (Start: 75 @50562 has 8 MA's), (79, 50541),

Gene: KADY_85 Start: 48196, Stop: 48038, Start Num: 73

Candidate Starts for KADY_85:

(43, 48304), (45, 48295), (62, 48229), (Start: 73 @48196 has 153 MA's), (Start: 75 @48178 has 8 MA's), (78, 48160), (79, 48157), (89, 48085),

Gene: KFPoly_83 Start: 48583, Stop: 48407, Start Num: 67

Candidate Starts for KFPoly_83:

(Start: 67 @48583 has 133 MA's), (Start: 75 @48556 has 8 MA's), (77, 48547), (84, 48523), (85, 48517), (88, 48478), (92, 48445), (95, 48433),

Gene: Kalb97_88 Start: 47368, Stop: 47210, Start Num: 73

Candidate Starts for Kalb97_88:

(45, 47467), (Start: 73 @47368 has 153 MA's), (Start: 75 @47350 has 8 MA's), (78, 47332), (79, 47329), (89, 47257), (96, 47227),

Gene: Kalnoky_88 Start: 47995, Stop: 47837, Start Num: 73

Candidate Starts for Kalnoky_88:

(45, 48094), (Start: 73 @47995 has 153 MA's), (Start: 75 @47977 has 8 MA's), (78, 47959), (79, 47956), (89, 47884), (96, 47854),

Gene: Kalpine_92 Start: 50232, Stop: 50065, Start Num: 73

Candidate Starts for Kalpine_92:

(Start: 73 @50232 has 153 MA's), (74, 50220), (Start: 75 @50214 has 8 MA's), (91, 50106),

Gene: Kampy_83 Start: 48592, Stop: 48416, Start Num: 67

Candidate Starts for Kampy_83:

(Start: 67 @48592 has 133 MA's), (Start: 75 @48565 has 8 MA's), (77, 48556), (84, 48532), (85, 48526), (88, 48487), (92, 48454), (95, 48442),

Gene: Katalie136_81 Start: 48410, Stop: 48231, Start Num: 67

Candidate Starts for Katalie136_81:

(Start: 67 @48410 has 133 MA's), (76, 48374), (88, 48302), (89, 48287), (92, 48269),

Gene: Kazan_95 Start: 48785, Stop: 48603, Start Num: 63

Candidate Starts for Kazan_95:

(4, 49286), (5, 49277), (6, 49262), (26, 49019), (32, 48920), (39, 48887), (Start: 63 @48785 has 34 MA's), (79, 48725), (85, 48707), (86, 48692),

Gene: Kerberos_95 Start: 50388, Stop: 50224, Start Num: 68
Candidate Starts for Kerberos_95:
(Start: 68 @50388 has 55 MA's), (Start: 75 @50370 has 8 MA's), (79, 50349),

Gene: Keziacharles14_89 Start: 50191, Stop: 50024, Start Num: 73
Candidate Starts for Keziacharles14_89:
(20, 50482), (21, 50473), (Start: 61 @50215 has 3 MA's), (Start: 73 @50191 has 153 MA's), (Start: 75 @50173 has 8 MA's), (77, 50164), (83, 50143), (89, 50080), (91, 50065), (92, 50062),

Gene: KingCyrus_88 Start: 51122, Stop: 50955, Start Num: 70
Candidate Starts for KingCyrus_88:
(Start: 70 @51122 has 14 MA's), (83, 51074),

Gene: Kingmustik0402_84 Start: 48578, Stop: 48402, Start Num: 67
Candidate Starts for Kingmustik0402_84:
(Start: 67 @48578 has 133 MA's), (Start: 75 @48551 has 8 MA's), (77, 48542), (84, 48518), (85, 48512), (88, 48473), (92, 48440), (95, 48428),

Gene: Kipper29_94 Start: 48790, Stop: 48608, Start Num: 63
Candidate Starts for Kipper29_94:
(39, 48892), (Start: 63 @48790 has 34 MA's), (79, 48730), (85, 48712), (86, 48697),

Gene: Koan_79 Start: 48589, Stop: 48413, Start Num: 67
Candidate Starts for Koan_79:
(Start: 67 @48589 has 133 MA's), (Start: 75 @48562 has 8 MA's), (77, 48553), (84, 48529), (85, 48523), (88, 48484), (92, 48451), (95, 48439),

Gene: Koduck_95 Start: 49950, Stop: 49789, Start Num: 68
Candidate Starts for Koduck_95:
(8, 50385), (13, 50307), (44, 50025), (48, 50016), (49, 50007), (Start: 60 @49962 has 4 MA's), (Start: 68 @49950 has 55 MA's), (Start: 75 @49932 has 8 MA's), (79, 49911),

Gene: Koko_98 Start: 49824, Stop: 49657, Start Num: 68
Candidate Starts for Koko_98:
(4, 50334), (5, 50325), (6, 50310), (26, 50067), (32, 49968), (39, 49935), (Start: 63 @49833 has 34 MA's), (Start: 68 @49824 has 55 MA's), (Start: 75 @49806 has 8 MA's), (85, 49767), (101, 49668),

Gene: Koreni_83 Start: 48270, Stop: 48094, Start Num: 67
Candidate Starts for Koreni_83:
(Start: 67 @48270 has 133 MA's), (Start: 75 @48243 has 8 MA's), (77, 48234), (84, 48210), (85, 48204), (88, 48165), (92, 48132), (95, 48120),

Gene: Kratark_83 Start: 48623, Stop: 48447, Start Num: 67
Candidate Starts for Kratark_83:
(Start: 67 @48623 has 133 MA's), (Start: 75 @48596 has 8 MA's), (77, 48587), (84, 48563), (85, 48557), (88, 48518), (92, 48485), (95, 48473),

Gene: Kremtemulon_81 Start: 48469, Stop: 48293, Start Num: 67
Candidate Starts for Kremtemulon_81:
(Start: 67 @48469 has 133 MA's), (76, 48436), (88, 48364), (92, 48331),

Gene: Kyee_84 Start: 48584, Stop: 48408, Start Num: 67

Candidate Starts for Kyee_84:

(Start: 67 @48584 has 133 MA's), (Start: 75 @48557 has 8 MA's), (77, 48548), (84, 48524), (85, 48518), (88, 48479), (92, 48446), (95, 48434),

Gene: L5_87 Start: 49654, Stop: 49493, Start Num: 68

Candidate Starts for L5_87:

(8, 50089), (13, 50011), (44, 49729), (48, 49720), (49, 49711), (Start: 60 @49666 has 4 MA's), (Start: 68 @49654 has 55 MA's), (Start: 75 @49636 has 8 MA's), (79, 49615),

Gene: LBerry_90 Start: 48251, Stop: 48093, Start Num: 73

Candidate Starts for LBerry_90:

(43, 48359), (45, 48350), (54, 48314), (62, 48284), (Start: 73 @48251 has 153 MA's), (Start: 75 @48233 has 8 MA's), (78, 48215), (79, 48212), (89, 48140),

Gene: LadyBird_93 Start: 50277, Stop: 50110, Start Num: 73

Candidate Starts for LadyBird_93:

(Start: 61 @50304 has 3 MA's), (Start: 73 @50277 has 153 MA's),

Gene: Landor_88 Start: 50792, Stop: 50607, Start Num: 61

Candidate Starts for Landor_88:

(42, 50882), (Start: 61 @50792 has 3 MA's), (102, 50615),

Gene: LappelDuVide_84 Start: 48589, Stop: 48413, Start Num: 67

Candidate Starts for LappelDuVide_84:

(Start: 67 @48589 has 133 MA's), (Start: 75 @48562 has 8 MA's), (77, 48553), (84, 48529), (85, 48523), (88, 48484), (92, 48451), (95, 48439),

Gene: Larenn_88 Start: 49613, Stop: 49446, Start Num: 73

Candidate Starts for Larenn_88:

(Start: 73 @49613 has 153 MA's), (Start: 75 @49595 has 8 MA's), (78, 49577), (91, 49487),

Gene: LarryKay_88 Start: 48200, Stop: 48042, Start Num: 73

Candidate Starts for LarryKay_88:

(43, 48308), (45, 48299), (62, 48233), (Start: 73 @48200 has 153 MA's), (Start: 75 @48182 has 8 MA's), (78, 48164), (79, 48161), (89, 48089),

Gene: Lemur_84 Start: 48586, Stop: 48410, Start Num: 67

Candidate Starts for Lemur_84:

(Start: 67 @48586 has 133 MA's), (Start: 75 @48559 has 8 MA's), (77, 48550), (84, 48526), (85, 48520), (88, 48481), (92, 48448), (95, 48436),

Gene: Leviathan_91 Start: 50201, Stop: 50034, Start Num: 70

Candidate Starts for Leviathan_91:

(Start: 61 @50219 has 3 MA's), (Start: 70 @50201 has 14 MA's), (74, 50189), (Start: 75 @50183 has 8 MA's), (91, 50075),

Gene: LilTurb_91 Start: 50110, Stop: 49943, Start Num: 73

Candidate Starts for LilTurb_91:

(Start: 73 @50110 has 153 MA's), (Start: 75 @50092 has 8 MA's), (91, 49984),

Gene: Lilbunny_93 Start: 47691, Stop: 47515, Start Num: 63

Candidate Starts for Lilbunny_93:

(4, 48192), (5, 48183), (6, 48168), (26, 47925), (32, 47826), (39, 47793), (Start: 63 @47691 has 34 MA's), (Start: 68 @47682 has 55 MA's), (Start: 75 @47664 has 8 MA's), (85, 47625), (101, 47526),

Gene: Lilit_86 Start: 48222, Stop: 48082, Start Num: 75

Candidate Starts for Lilit_86:

(43, 48348), (45, 48339), (54, 48303), (62, 48273), (Start: 73 @48240 has 153 MA's), (Start: 75 @48222 has 8 MA's), (78, 48204), (79, 48201), (89, 48129),

Gene: Lilleskat_90 Start: 49842, Stop: 49669, Start Num: 72

Candidate Starts for Lilleskat_90:

(Start: 72 @49842 has 9 MA's), (Start: 73 @49836 has 153 MA's), (Start: 75 @49818 has 8 MA's), (81, 49794), (83, 49788), (89, 49725), (91, 49710), (92, 49707),

Gene: LionsBait_88 Start: 50597, Stop: 50430, Start Num: 70

Candidate Starts for LionsBait_88:

(Start: 61 @50615 has 3 MA's), (Start: 70 @50597 has 14 MA's), (85, 50540), (91, 50471),

Gene: LittleB_84 Start: 48590, Stop: 48414, Start Num: 67

Candidate Starts for LittleB_84:

(Start: 67 @48590 has 133 MA's), (Start: 75 @48563 has 8 MA's), (77, 48554), (84, 48530), (85, 48524), (88, 48485), (92, 48452), (95, 48440),

Gene: LittleGuy_84 Start: 48480, Stop: 48304, Start Num: 67

Candidate Starts for LittleGuy_84:

(Start: 67 @48480 has 133 MA's), (Start: 75 @48453 has 8 MA's), (77, 48444), (84, 48420), (85, 48414), (88, 48375), (92, 48342), (95, 48330),

Gene: LochMonster_85 Start: 48826, Stop: 48650, Start Num: 67

Candidate Starts for LochMonster_85:

(Start: 67 @48826 has 133 MA's), (Start: 75 @48799 has 8 MA's), (77, 48790), (84, 48766), (85, 48760), (88, 48721), (92, 48688), (95, 48676),

Gene: Lokk_85 Start: 48141, Stop: 47974, Start Num: 73

Candidate Starts for Lokk_85:

(Start: 73 @48141 has 153 MA's), (Start: 75 @48123 has 8 MA's), (91, 48015),

Gene: LoneWolf_93 Start: 49853, Stop: 49686, Start Num: 73

Candidate Starts for LoneWolf_93:

(Start: 73 @49853 has 153 MA's), (82, 49808), (91, 49727), (95, 49712), (97, 49700),

Gene: Lorenzo_84 Start: 48587, Stop: 48411, Start Num: 67

Candidate Starts for Lorenzo_84:

(Start: 67 @48587 has 133 MA's), (Start: 75 @48560 has 8 MA's), (77, 48551), (84, 48527), (85, 48521), (88, 48482), (92, 48449), (95, 48437),

Gene: Loser_92 Start: 50397, Stop: 50230, Start Num: 73

Candidate Starts for Loser_92:

(Start: 73 @50397 has 153 MA's), (74, 50385), (Start: 75 @50379 has 8 MA's), (91, 50271),

Gene: Louie6_87 Start: 48179, Stop: 48039, Start Num: 75

Candidate Starts for Louie6_87:

(43, 48305), (45, 48296), (62, 48230), (Start: 73 @48197 has 153 MA's), (Start: 75 @48179 has 8 MA's), (78, 48161), (79, 48158), (89, 48086),

Gene: Lova_86 Start: 48221, Stop: 48081, Start Num: 75

Candidate Starts for Lova_86:

(43, 48347), (45, 48338), (54, 48302), (62, 48272), (Start: 73 @48239 has 153 MA's), (Start: 75 @48221 has 8 MA's), (78, 48203), (79, 48200), (89, 48128),

Gene: Luchador_89 Start: 49503, Stop: 49336, Start Num: 73

Candidate Starts for Luchador_89:

(Start: 73 @49503 has 153 MA's), (Start: 75 @49485 has 8 MA's), (81, 49461), (85, 49446), (91, 49377),

Gene: Lucivia_97 Start: 50006, Stop: 49833, Start Num: 68

Candidate Starts for Lucivia_97:

(44, 50081), (48, 50072), (49, 50063), (Start: 60 @50018 has 4 MA's), (Start: 68 @50006 has 55 MA's), (Start: 75 @49988 has 8 MA's), (77, 49979), (93, 49871),

Gene: Lucyedi_91 Start: 50399, Stop: 50229, Start Num: 68

Candidate Starts for Lucyedi_91:

(Start: 63 @50408 has 34 MA's), (Start: 68 @50399 has 55 MA's), (79, 50360), (85, 50342),

Gene: LugYA_91 Start: 48165, Stop: 48007, Start Num: 73

Candidate Starts for LugYA_91:

(43, 48273), (45, 48264), (62, 48198), (Start: 73 @48165 has 153 MA's), (Start: 75 @48147 has 8 MA's), (78, 48129), (79, 48126), (89, 48054),

Gene: Lunsford_84 Start: 48582, Stop: 48406, Start Num: 67

Candidate Starts for Lunsford_84:

(Start: 67 @48582 has 133 MA's), (Start: 75 @48555 has 8 MA's), (77, 48546), (84, 48522), (85, 48516), (88, 48477), (92, 48444), (95, 48432),

Gene: MaCh_96 Start: 49982, Stop: 49797, Start Num: 60

Candidate Starts for MaCh_96:

(13, 50327), (44, 50045), (48, 50036), (49, 50027), (Start: 60 @49982 has 4 MA's), (Start: 68 @49970 has 55 MA's), (Start: 75 @49952 has 8 MA's), (77, 49943), (93, 49835),

Gene: Mabel_96 Start: 49971, Stop: 49798, Start Num: 68

Candidate Starts for Mabel_96:

(44, 50046), (48, 50037), (49, 50028), (Start: 60 @49983 has 4 MA's), (Start: 68 @49971 has 55 MA's), (Start: 75 @49953 has 8 MA's), (77, 49944), (93, 49836),

Gene: MadMarie_86 Start: 48248, Stop: 48090, Start Num: 73

Candidate Starts for MadMarie_86:

(43, 48356), (45, 48347), (54, 48311), (62, 48281), (Start: 73 @48248 has 153 MA's), (Start: 75 @48230 has 8 MA's), (78, 48212), (79, 48209), (89, 48137),

Gene: Mainiac_88 Start: 48240, Stop: 48082, Start Num: 73

Candidate Starts for Mainiac_88:

(43, 48348), (45, 48339), (54, 48303), (62, 48273), (Start: 73 @48240 has 153 MA's), (Start: 75 @48222 has 8 MA's), (78, 48204), (79, 48201), (89, 48129),

Gene: MajorMajor_92 Start: 48629, Stop: 48468, Start Num: 68

Candidate Starts for MajorMajor_92:

(48, 48695), (49, 48686), (Start: 60 @48641 has 4 MA's), (Start: 68 @48629 has 55 MA's), (74, 48617), (Start: 75 @48611 has 8 MA's), (79, 48590),

Gene: Malec_88 Start: 50021, Stop: 49854, Start Num: 73

Candidate Starts for Malec_88:

(Start: 73 @50021 has 153 MA's), (Start: 75 @50003 has 8 MA's), (78, 49985), (91, 49895),

Gene: Malinsilva_92 Start: 48239, Stop: 48081, Start Num: 73

Candidate Starts for Malinsilva_92:

(43, 48347), (45, 48338), (54, 48302), (62, 48272), (Start: 73 @48239 has 153 MA's), (Start: 75 @48221 has 8 MA's), (78, 48203), (79, 48200), (89, 48128),

Gene: Maminiaina_92 Start: 49755, Stop: 49588, Start Num: 73

Candidate Starts for Maminiaina_92:

(Start: 73 @49755 has 153 MA's), (81, 49713), (83, 49707), (89, 49644), (91, 49629), (92, 49626),

Gene: Manu_87 Start: 48002, Stop: 47844, Start Num: 73

Candidate Starts for Manu_87:

(45, 48101), (Start: 73 @48002 has 153 MA's), (Start: 75 @47984 has 8 MA's), (78, 47966), (79, 47963), (89, 47891), (96, 47861),

Gene: MarQuardt_88 Start: 48168, Stop: 48010, Start Num: 73

Candidate Starts for MarQuardt_88:

(43, 48276), (45, 48267), (62, 48201), (Start: 73 @48168 has 153 MA's), (Start: 75 @48150 has 8 MA's), (78, 48132), (79, 48129), (89, 48057),

Gene: Marie_86 Start: 48164, Stop: 48006, Start Num: 73

Candidate Starts for Marie_86:

(43, 48272), (45, 48263), (62, 48197), (Start: 73 @48164 has 153 MA's), (Start: 75 @48146 has 8 MA's), (78, 48128), (79, 48125), (89, 48053),

Gene: Marius_88 Start: 47995, Stop: 47837, Start Num: 73

Candidate Starts for Marius_88:

(45, 48094), (Start: 73 @47995 has 153 MA's), (Start: 75 @47977 has 8 MA's), (78, 47959), (79, 47956), (89, 47884), (96, 47854),

Gene: Maverick_83 Start: 48586, Stop: 48410, Start Num: 67

Candidate Starts for Maverick_83:

(Start: 67 @48586 has 133 MA's), (Start: 75 @48559 has 8 MA's), (77, 48550), (84, 48526), (85, 48520), (88, 48481), (92, 48448), (95, 48436),

Gene: Maxo_86 Start: 48592, Stop: 48416, Start Num: 67

Candidate Starts for Maxo_86:

(Start: 67 @48592 has 133 MA's), (Start: 75 @48565 has 8 MA's), (77, 48556), (84, 48532), (85, 48526), (88, 48487), (92, 48454), (95, 48442),

Gene: Mazhar510_84 Start: 48587, Stop: 48411, Start Num: 67

Candidate Starts for Mazhar510_84:

(Start: 67 @48587 has 133 MA's), (Start: 75 @48560 has 8 MA's), (77, 48551), (84, 48527), (85, 48521), (88, 48482), (92, 48449), (95, 48437),

Gene: McFly_94 Start: 49124, Stop: 48942, Start Num: 63

Candidate Starts for McFly_94:

(1, 49790), (2, 49712), (4, 49625), (6, 49601), (26, 49358), (32, 49259), (39, 49226), (Start: 63 @49124 has 34 MA's), (79, 49064), (85, 49046), (86, 49031),

Gene: Medusa_83 Start: 48602, Stop: 48426, Start Num: 67

Candidate Starts for Medusa_83:

(Start: 67 @48602 has 133 MA's), (Start: 75 @48575 has 8 MA's), (77, 48566), (84, 48542), (85, 48536), (88, 48497), (92, 48464), (95, 48452),

Gene: MeeZee_83 Start: 48583, Stop: 48407, Start Num: 67

Candidate Starts for MeeZee_83:

(Start: 67 @48583 has 133 MA's), (Start: 75 @48556 has 8 MA's), (77, 48547), (84, 48523), (85, 48517), (88, 48478), (92, 48445), (95, 48433),

Gene: Melvin_86 Start: 48584, Stop: 48408, Start Num: 67

Candidate Starts for Melvin_86:

(Start: 67 @48584 has 133 MA's), (Start: 75 @48557 has 8 MA's), (77, 48548), (84, 48524), (85, 48518), (88, 48479), (92, 48446), (95, 48434),

Gene: Methuselah_81 Start: 48190, Stop: 48032, Start Num: 73

Candidate Starts for Methuselah_81:

(43, 48298), (45, 48289), (62, 48223), (Start: 73 @48190 has 153 MA's), (Start: 75 @48172 has 8 MA's), (78, 48154), (79, 48151), (89, 48079),

Gene: Microwolf_84 Start: 48263, Stop: 48105, Start Num: 73

Candidate Starts for Microwolf_84:

(43, 48371), (45, 48362), (54, 48326), (62, 48296), (Start: 73 @48263 has 153 MA's), (Start: 75 @48245 has 8 MA's), (78, 48227), (79, 48224), (89, 48152),

Gene: MiculUcigas_91 Start: 49606, Stop: 49439, Start Num: 73

Candidate Starts for MiculUcigas_91:

(10, 49999), (12, 49990), (17, 49936), (22, 49882), (Start: 73 @49606 has 153 MA's), (78, 49570), (91, 49480),

Gene: Miko_86 Start: 48998, Stop: 48831, Start Num: 73

Candidate Starts for Miko_86:

(Start: 73 @48998 has 153 MA's), (Start: 75 @48980 has 8 MA's), (91, 48872),

Gene: Millski_83 Start: 48590, Stop: 48414, Start Num: 67

Candidate Starts for Millski_83:

(Start: 67 @48590 has 133 MA's), (Start: 75 @48563 has 8 MA's), (77, 48554), (84, 48530), (85, 48524), (88, 48485), (92, 48452), (95, 48440),

Gene: Miramae_84 Start: 48505, Stop: 48329, Start Num: 67

Candidate Starts for Miramae_84:

(51, 48556), (Start: 67 @48505 has 133 MA's), (Start: 75 @48478 has 8 MA's), (77, 48469), (84, 48445), (85, 48439), (88, 48400), (92, 48367), (95, 48355),

Gene: Misomonster_84 Start: 45802, Stop: 45644, Start Num: 73

Candidate Starts for Misomonster_84:

(43, 45910), (45, 45901), (62, 45835), (Start: 73 @45802 has 153 MA's), (Start: 75 @45784 has 8 MA's), (78, 45766), (79, 45763), (89, 45691),

Gene: MissWhite_88 Start: 47350, Stop: 47180, Start Num: 68

Candidate Starts for MissWhite_88:

(Start: 63 @47359 has 34 MA's), (Start: 68 @47350 has 55 MA's), (77, 47323), (78, 47314), (82, 47302), (90, 47224),

Gene: MoneyMay_88 Start: 48164, Stop: 48006, Start Num: 73

Candidate Starts for MoneyMay_88:

(43, 48272), (45, 48263), (62, 48197), (Start: 73 @48164 has 153 MA's), (Start: 75 @48146 has 8 MA's), (78, 48128), (79, 48125), (89, 48053),

Gene: Morpher26_81 Start: 48431, Stop: 48252, Start Num: 67

Candidate Starts for Morpher26_81:

(Start: 67 @48431 has 133 MA's), (76, 48395), (88, 48323), (89, 48308), (92, 48290),

Gene: Morrow_86 Start: 48629, Stop: 48453, Start Num: 67

Candidate Starts for Morrow_86:

(Start: 67 @48629 has 133 MA's), (Start: 75 @48602 has 8 MA's), (77, 48593), (84, 48569), (85, 48563), (88, 48524), (92, 48491), (95, 48479),

Gene: Mulciber_95 Start: 49826, Stop: 49653, Start Num: 68

Candidate Starts for Mulciber_95:

(44, 49901), (48, 49892), (49, 49883), (Start: 60 @49838 has 4 MA's), (Start: 68 @49826 has 55 MA's), (Start: 75 @49808 has 8 MA's), (77, 49799), (93, 49691),

Gene: Munch_95 Start: 49975, Stop: 49802, Start Num: 68

Candidate Starts for Munch_95:

(13, 50332), (44, 50050), (48, 50041), (49, 50032), (Start: 60 @49987 has 4 MA's), (Start: 68 @49975 has 55 MA's), (Start: 75 @49957 has 8 MA's), (77, 49948), (93, 49840),

Gene: Mundrea_82 Start: 48467, Stop: 48291, Start Num: 67

Candidate Starts for Mundrea_82:

(51, 48518), (Start: 67 @48467 has 133 MA's), (Start: 75 @48440 has 8 MA's), (77, 48431), (84, 48407), (85, 48401), (88, 48362), (92, 48329), (95, 48317),

Gene: Myxus_93 Start: 49888, Stop: 49715, Start Num: 72

Candidate Starts for Myxus_93:

(20, 50173), (29, 50089), (Start: 61 @49906 has 3 MA's), (Start: 72 @49888 has 9 MA's), (Start: 73 @49882 has 153 MA's), (Start: 75 @49864 has 8 MA's), (81, 49840), (83, 49834), (89, 49771), (91, 49756), (92, 49753),

Gene: NaSiaTalie_92 Start: 49767, Stop: 49600, Start Num: 73

Candidate Starts for NaSiaTalie_92:

(10, 50160), (12, 50151), (17, 50097), (22, 50043), (Start: 73 @49767 has 153 MA's), (Start: 75 @49749 has 8 MA's), (78, 49731), (91, 49641),

Gene: Naji_84 Start: 46753, Stop: 46589, Start Num: 68

Candidate Starts for Naji_84:

(Start: 68 @46753 has 55 MA's), (Start: 75 @46735 has 8 MA's), (79, 46714),

Gene: Nebs_85 Start: 48629, Stop: 48453, Start Num: 67

Candidate Starts for Nebs_85:

(Start: 67 @48629 has 133 MA's), (Start: 75 @48602 has 8 MA's), (77, 48593), (84, 48569), (85, 48563), (88, 48524), (92, 48491), (95, 48479),

Gene: Neeharika16_93 Start: 48877, Stop: 48695, Start Num: 63
Candidate Starts for Neeharika16_93:
(4, 49378), (5, 49369), (6, 49354), (26, 49111), (32, 49012), (39, 48979), (Start: 63 @48877 has 34 MA's), (79, 48817), (85, 48799), (86, 48784),

Gene: Nemo27_83 Start: 48585, Stop: 48409, Start Num: 67
Candidate Starts for Nemo27_83:
(Start: 67 @48585 has 133 MA's), (Start: 75 @48558 has 8 MA's), (77, 48549), (84, 48525), (85, 48519), (88, 48480), (92, 48447), (95, 48435),

Gene: Newrala_93 Start: 49223, Stop: 49041, Start Num: 63
Candidate Starts for Newrala_93:
(4, 49724), (5, 49715), (6, 49700), (26, 49457), (32, 49358), (39, 49325), (Start: 63 @49223 has 34 MA's), (79, 49163), (85, 49145), (86, 49130),

Gene: NicoleTera_89 Start: 49675, Stop: 49508, Start Num: 73
Candidate Starts for NicoleTera_89:
(35, 49819), (57, 49711), (Start: 73 @49675 has 153 MA's), (74, 49663), (Start: 75 @49657 has 8 MA's), (91, 49549),

Gene: Noelle_82 Start: 48586, Stop: 48410, Start Num: 67
Candidate Starts for Noelle_82:
(Start: 67 @48586 has 133 MA's), (Start: 75 @48559 has 8 MA's), (88, 48481), (92, 48448),

Gene: NorthStar_81 Start: 48589, Stop: 48413, Start Num: 67
Candidate Starts for NorthStar_81:
(Start: 67 @48589 has 133 MA's), (Start: 75 @48562 has 8 MA's), (77, 48553), (84, 48529), (85, 48523), (88, 48484), (92, 48451), (95, 48439),

Gene: NotAPhaseMom_83 Start: 48590, Stop: 48414, Start Num: 67
Candidate Starts for NotAPhaseMom_83:
(Start: 67 @48590 has 133 MA's), (Start: 75 @48563 has 8 MA's), (77, 48554), (84, 48530), (85, 48524), (88, 48485), (92, 48452), (95, 48440),

Gene: NothingSpecial_84 Start: 49461, Stop: 49294, Start Num: 73
Candidate Starts for NothingSpecial_84:
(57, 49491), (Start: 73 @49461 has 153 MA's), (Start: 75 @49443 has 8 MA's), (91, 49335),

Gene: Nyxis_83 Start: 48474, Stop: 48298, Start Num: 67
Candidate Starts for Nyxis_83:
(Start: 67 @48474 has 133 MA's), (Start: 75 @48447 has 8 MA's), (77, 48438), (84, 48414), (85, 48408), (88, 48369), (92, 48336), (95, 48324),

Gene: OKaNui_83 Start: 48640, Stop: 48464, Start Num: 67
Candidate Starts for OKaNui_83:
(Start: 67 @48640 has 133 MA's), (Start: 75 @48613 has 8 MA's), (77, 48604), (84, 48580), (85, 48574), (88, 48535), (92, 48502), (95, 48490),

Gene: Obama12_85 Start: 49013, Stop: 48837, Start Num: 67
Candidate Starts for Obama12_85:
(Start: 67 @49013 has 133 MA's), (Start: 75 @48986 has 8 MA's), (77, 48977), (84, 48953), (85, 48947), (88, 48908), (92, 48875), (95, 48863),

Gene: Odin_91 Start: 49782, Stop: 49615, Start Num: 68
Candidate Starts for Odin_91:
(Start: 68 @49782 has 55 MA's), (89, 49671), (102, 49623),

Gene: Ohfah_85 Start: 48629, Stop: 48453, Start Num: 67
Candidate Starts for Ohfah_85:
(Start: 67 @48629 has 133 MA's), (Start: 75 @48602 has 8 MA's), (77, 48593), (84, 48569), (85, 48563), (88, 48524), (92, 48491), (95, 48479),

Gene: OlanP_86 Start: 48173, Stop: 48015, Start Num: 73
Candidate Starts for OlanP_86:
(45, 48272), (51, 48245), (Start: 73 @48173 has 153 MA's), (Start: 75 @48155 has 8 MA's), (78, 48137), (79, 48134), (89, 48062), (96, 48032),

Gene: Ollie_89 Start: 48118, Stop: 47960, Start Num: 73
Candidate Starts for Ollie_89:
(43, 48226), (45, 48217), (62, 48151), (Start: 73 @48118 has 153 MA's), (Start: 75 @48100 has 8 MA's), (78, 48082), (79, 48079), (89, 48007),

Gene: Onglai_91 Start: 48037, Stop: 47870, Start Num: 73
Candidate Starts for Onglai_91:
(29, 48244), (Start: 61 @48061 has 3 MA's), (Start: 72 @48043 has 9 MA's), (Start: 73 @48037 has 153 MA's), (Start: 75 @48019 has 8 MA's), (81, 47995), (83, 47989), (89, 47926), (91, 47911), (92, 47908),

Gene: Orange_96 Start: 49525, Stop: 49352, Start Num: 68
Candidate Starts for Orange_96:
(13, 49882), (44, 49600), (48, 49591), (49, 49582), (Start: 60 @49537 has 4 MA's), (Start: 68 @49525 has 55 MA's), (Start: 75 @49507 has 8 MA's), (77, 49498), (93, 49390),

Gene: P28Green_88 Start: 48172, Stop: 48014, Start Num: 73
Candidate Starts for P28Green_88:
(43, 48280), (45, 48271), (62, 48205), (Start: 73 @48172 has 153 MA's), (Start: 75 @48154 has 8 MA's), (78, 48136), (79, 48133), (89, 48061),

Gene: PGHhamlin_91 Start: 48239, Stop: 48081, Start Num: 73
Candidate Starts for PGHhamlin_91:
(43, 48347), (45, 48338), (62, 48272), (Start: 73 @48239 has 153 MA's), (Start: 75 @48221 has 8 MA's), (78, 48203), (79, 48200), (89, 48128),

Gene: PackMan_88 Start: 47802, Stop: 47629, Start Num: 72
Candidate Starts for PackMan_88:
(20, 48087), (29, 48003), (Start: 61 @47820 has 3 MA's), (Start: 72 @47802 has 9 MA's), (Start: 73 @47796 has 153 MA's), (Start: 75 @47778 has 8 MA's), (81, 47754), (83, 47748), (89, 47685), (91, 47670), (92, 47667),

Gene: PainterBoy_90 Start: 50110, Stop: 49940, Start Num: 68
Candidate Starts for PainterBoy_90:
(Start: 63 @50119 has 34 MA's), (Start: 68 @50110 has 55 MA's), (79, 50071), (85, 50053),

Gene: Palestino_83 Start: 48586, Stop: 48410, Start Num: 67
Candidate Starts for Palestino_83:

(Start: 67 @48586 has 133 MA's), (Start: 75 @48559 has 8 MA's), (77, 48550), (84, 48526), (85, 48520), (88, 48481), (92, 48448), (95, 48436),

Gene: Pawn_86 Start: 48002, Stop: 47844, Start Num: 73

Candidate Starts for Pawn_86:

(45, 48101), (Start: 73 @48002 has 153 MA's), (Start: 75 @47984 has 8 MA's), (78, 47966), (79, 47963), (89, 47891), (96, 47861),

Gene: Peaches_82 Start: 48594, Stop: 48418, Start Num: 67

Candidate Starts for Peaches_82:

(Start: 67 @48594 has 133 MA's), (Start: 75 @48567 has 8 MA's), (77, 48558), (84, 48534), (85, 48528), (88, 48489), (92, 48456), (95, 48444),

Gene: Pembroke_89 Start: 48248, Stop: 48090, Start Num: 73

Candidate Starts for Pembroke_89:

(43, 48356), (45, 48347), (54, 48311), (62, 48281), (Start: 73 @48248 has 153 MA's), (Start: 75 @48230 has 8 MA's), (78, 48212), (79, 48209), (89, 48137),

Gene: Penny1_88 Start: 48170, Stop: 48012, Start Num: 73

Candidate Starts for Penny1_88:

(43, 48278), (45, 48269), (62, 48203), (Start: 73 @48170 has 153 MA's), (Start: 75 @48152 has 8 MA's), (78, 48134), (79, 48131), (89, 48059),

Gene: Perplexer_81 Start: 48411, Stop: 48232, Start Num: 67

Candidate Starts for Perplexer_81:

(Start: 67 @48411 has 133 MA's), (76, 48375), (88, 48303), (89, 48288), (92, 48270),

Gene: PeterPeter_84 Start: 48583, Stop: 48407, Start Num: 67

Candidate Starts for PeterPeter_84:

(Start: 67 @48583 has 133 MA's), (Start: 75 @48556 has 8 MA's), (77, 48547), (84, 48523), (85, 48517), (88, 48478), (92, 48445), (95, 48433),

Gene: Petersenfast_90 Start: 48406, Stop: 48233, Start Num: 68

Candidate Starts for Petersenfast_90:

(44, 48481), (48, 48472), (49, 48463), (Start: 60 @48418 has 4 MA's), (Start: 68 @48406 has 55 MA's), (Start: 75 @48388 has 8 MA's), (77, 48379), (93, 48271),

Gene: PetiteSangsue_81 Start: 48414, Stop: 48235, Start Num: 67

Candidate Starts for PetiteSangsue_81:

(Start: 67 @48414 has 133 MA's), (76, 48378), (88, 48306), (89, 48291), (92, 48273),

Gene: Ph8s_95 Start: 49898, Stop: 49722, Start Num: 68

Candidate Starts for Ph8s_95:

(34, 50042), (38, 50018), (Start: 68 @49898 has 55 MA's), (Start: 75 @49871 has 8 MA's), (89, 49778), (101, 49733),

Gene: Phacado_84 Start: 48585, Stop: 48409, Start Num: 67

Candidate Starts for Phacado_84:

(Start: 67 @48585 has 133 MA's), (Start: 75 @48558 has 8 MA's), (77, 48549), (84, 48525), (85, 48519), (88, 48480), (92, 48447), (95, 48435),

Gene: Phaeder_93 Start: 49763, Stop: 49590, Start Num: 72

Candidate Starts for Phaeder_93:

(20, 50048), (29, 49964), (Start: 61 @49781 has 3 MA's), (Start: 72 @49763 has 9 MA's), (Start: 73 @49757 has 153 MA's), (Start: 75 @49739 has 8 MA's), (81, 49715), (83, 49709), (89, 49646), (91, 49631), (92, 49628),

Gene: Phelipe_84 Start: 48550, Stop: 48374, Start Num: 67

Candidate Starts for Phelipe_84:

(Start: 67 @48550 has 133 MA's), (Start: 75 @48523 has 8 MA's), (77, 48514), (84, 48490), (85, 48484), (88, 48445), (92, 48412), (95, 48400),

Gene: Phighter1804_84 Start: 48650, Stop: 48474, Start Num: 67

Candidate Starts for Phighter1804_84:

(Start: 67 @48650 has 133 MA's), (Start: 75 @48623 has 8 MA's), (77, 48614), (84, 48590), (85, 48584), (88, 48545), (92, 48512), (95, 48500),

Gene: PhishRPhriends_84 Start: 47182, Stop: 47024, Start Num: 73

Candidate Starts for PhishRPhriends_84:

(45, 47281), (Start: 73 @47182 has 153 MA's), (Start: 75 @47164 has 8 MA's), (78, 47146), (79, 47143), (89, 47071), (96, 47041),

Gene: Phoebe_89 Start: 48162, Stop: 48004, Start Num: 73

Candidate Starts for Phoebe_89:

(43, 48270), (45, 48261), (62, 48195), (Start: 73 @48162 has 153 MA's), (Start: 75 @48144 has 8 MA's), (78, 48126), (79, 48123), (89, 48051),

Gene: Phonnegut_93 Start: 49769, Stop: 49602, Start Num: 73

Candidate Starts for Phonnegut_93:

(Start: 72 @49775 has 9 MA's), (Start: 73 @49769 has 153 MA's), (Start: 75 @49751 has 8 MA's), (81, 49727), (83, 49721), (89, 49658), (91, 49643), (92, 49640),

Gene: Phontbonne_84 Start: 48490, Stop: 48314, Start Num: 67

Candidate Starts for Phontbonne_84:

(Start: 67 @48490 has 133 MA's), (Start: 75 @48463 has 8 MA's), (77, 48454), (84, 48430), (85, 48424), (88, 48385), (92, 48352), (95, 48340),

Gene: Phranny_80 Start: 45450, Stop: 45292, Start Num: 73

Candidate Starts for Phranny_80:

(45, 45549), (Start: 73 @45450 has 153 MA's), (Start: 75 @45432 has 8 MA's), (78, 45414), (79, 45411), (89, 45339), (96, 45309),

Gene: Pioneer_93 Start: 49769, Stop: 49602, Start Num: 73

Candidate Starts for Pioneer_93:

(Start: 72 @49775 has 9 MA's), (Start: 73 @49769 has 153 MA's), (Start: 75 @49751 has 8 MA's), (81, 49727), (83, 49721), (89, 49658), (91, 49643), (92, 49640),

Gene: Pipcraft_80 Start: 48590, Stop: 48414, Start Num: 67

Candidate Starts for Pipcraft_80:

(Start: 67 @48590 has 133 MA's), (Start: 75 @48563 has 8 MA's), (77, 48554), (84, 48530), (85, 48524), (88, 48485), (92, 48452), (95, 48440),

Gene: Piro94_89 Start: 49494, Stop: 49327, Start Num: 73

Candidate Starts for Piro94_89:

(10, 49887), (12, 49878), (17, 49824), (22, 49770), (Start: 73 @49494 has 153 MA's), (78, 49458), (91, 49368),

Gene: Pmask_93 Start: 49424, Stop: 49242, Start Num: 63

Candidate Starts for Pmask_93:

(4, 49925), (5, 49916), (6, 49901), (26, 49658), (32, 49559), (39, 49526), (Start: 63 @49424 has 34 MA's), (79, 49364), (85, 49346), (86, 49331),

Gene: Polymorphads_85 Start: 48610, Stop: 48434, Start Num: 67

Candidate Starts for Polymorphads_85:

(Start: 67 @48610 has 133 MA's), (Start: 75 @48583 has 8 MA's), (77, 48574), (84, 48550), (85, 48544), (88, 48505), (92, 48472), (95, 48460),

Gene: Polyphemus_86 Start: 47195, Stop: 47013, Start Num: 63

Candidate Starts for Polyphemus_86:

(39, 47297), (Start: 63 @47195 has 34 MA's), (79, 47135), (85, 47117), (86, 47102),

Gene: Pomar16_95 Start: 50461, Stop: 50297, Start Num: 68

Candidate Starts for Pomar16_95:

(Start: 68 @50461 has 55 MA's), (Start: 75 @50443 has 8 MA's), (79, 50422),

Gene: PotatoSplit_89 Start: 48170, Stop: 48012, Start Num: 73

Candidate Starts for PotatoSplit_89:

(43, 48278), (45, 48269), (62, 48203), (Start: 73 @48170 has 153 MA's), (Start: 75 @48152 has 8 MA's), (78, 48134), (79, 48131), (89, 48059),

Gene: Power_89 Start: 50044, Stop: 49877, Start Num: 73

Candidate Starts for Power_89:

(Start: 73 @50044 has 153 MA's), (Start: 75 @50026 has 8 MA's), (78, 50008), (91, 49918),

Gene: Priamo_94 Start: 48467, Stop: 48285, Start Num: 63

Candidate Starts for Priamo_94:

(26, 48701), (32, 48602), (39, 48569), (Start: 63 @48467 has 34 MA's), (79, 48407), (85, 48389), (86, 48374),

Gene: Priya_91 Start: 49541, Stop: 49374, Start Num: 73

Candidate Starts for Priya_91:

(Start: 73 @49541 has 153 MA's), (Start: 75 @49523 has 8 MA's), (81, 49499), (83, 49493), (89, 49430), (91, 49415),

Gene: Pumbaa_84 Start: 48534, Stop: 48358, Start Num: 67

Candidate Starts for Pumbaa_84:

(Start: 67 @48534 has 133 MA's), (Start: 75 @48507 has 8 MA's), (77, 48498), (84, 48474), (85, 48468), (88, 48429), (92, 48396), (95, 48384),

Gene: PurpleHaze_82 Start: 46021, Stop: 45863, Start Num: 73

Candidate Starts for PurpleHaze_82:

(45, 46120), (Start: 73 @46021 has 153 MA's), (Start: 75 @46003 has 8 MA's), (78, 45985), (79, 45982), (89, 45910), (96, 45880),

Gene: Qobbit_91 Start: 49503, Stop: 49336, Start Num: 73

Candidate Starts for Qobbit_91:

(Start: 73 @49503 has 153 MA's), (Start: 75 @49485 has 8 MA's), (81, 49461), (83, 49455), (89, 49392), (91, 49377),

Gene: QueenB2_87 Start: 49245, Stop: 49078, Start Num: 73
Candidate Starts for QueenB2_87:
(Start: 61 @49263 has 3 MA's), (Start: 73 @49245 has 153 MA's), (78, 49209), (91, 49119),

Gene: QueenBeesly_89 Start: 49997, Stop: 49830, Start Num: 73
Candidate Starts for QueenBeesly_89:
(Start: 73 @49997 has 153 MA's), (Start: 75 @49979 has 8 MA's), (78, 49961), (91, 49871),

Gene: Quokka_97 Start: 50338, Stop: 50177, Start Num: 68
Candidate Starts for Quokka_97:
(48, 50404), (49, 50395), (Start: 60 @50350 has 4 MA's), (Start: 68 @50338 has 55 MA's), (74, 50326),
(Start: 75 @50320 has 8 MA's), (79, 50299),

Gene: Rachaly_87 Start: 49141, Stop: 48974, Start Num: 73
Candidate Starts for Rachaly_87:
(Start: 73 @49141 has 153 MA's), (Start: 75 @49123 has 8 MA's), (91, 49015),

Gene: Rahalelujah_92 Start: 49331, Stop: 49164, Start Num: 73
Candidate Starts for Rahalelujah_92:
(Start: 73 @49331 has 153 MA's), (Start: 75 @49313 has 8 MA's), (83, 49283), (91, 49205), (95, 49190),

Gene: Reba_83 Start: 46838, Stop: 46680, Start Num: 73
Candidate Starts for Reba_83:
(45, 46937), (Start: 73 @46838 has 153 MA's), (Start: 75 @46820 has 8 MA's), (78, 46802), (79, 46799), (89, 46727), (96, 46697),

Gene: RedRock_90 Start: 50155, Stop: 49988, Start Num: 73
Candidate Starts for RedRock_90:
(Start: 73 @50155 has 153 MA's), (74, 50143), (Start: 75 @50137 has 8 MA's), (91, 50029),

Gene: Refuge_84 Start: 49473, Stop: 49306, Start Num: 73
Candidate Starts for Refuge_84:
(Start: 73 @49473 has 153 MA's), (Start: 75 @49455 has 8 MA's), (83, 49425), (91, 49347), (92, 49344), (98, 49317),

Gene: Relief_83 Start: 48586, Stop: 48410, Start Num: 67
Candidate Starts for Relief_83:
(Start: 67 @48586 has 133 MA's), (Start: 75 @48559 has 8 MA's), (77, 48550), (84, 48526), (85, 48520), (88, 48481), (92, 48448), (95, 48436),

Gene: Retro23_89 Start: 49543, Stop: 49376, Start Num: 73
Candidate Starts for Retro23_89:
(18, 49840), (24, 49807), (25, 49792), (Start: 61 @49561 has 3 MA's), (Start: 73 @49543 has 153 MA's), (78, 49507), (91, 49417),

Gene: Rifter_97 Start: 48602, Stop: 48435, Start Num: 68
Candidate Starts for Rifter_97:
(4, 49112), (5, 49103), (6, 49088), (26, 48845), (32, 48746), (39, 48713), (Start: 63 @48611 has 34 MA's), (Start: 68 @48602 has 55 MA's), (Start: 75 @48584 has 8 MA's), (85, 48545), (101, 48446),

Gene: Roksolana_97 Start: 49318, Stop: 49151, Start Num: 68
Candidate Starts for Roksolana_97:

(4, 49828), (5, 49819), (6, 49804), (26, 49561), (32, 49462), (39, 49429), (Start: 63 @49327 has 34 MA's), (Start: 68 @49318 has 55 MA's), (Start: 75 @49300 has 8 MA's), (85, 49261), (95, 49177), (101, 49162),

Gene: Romney_83 Start: 48586, Stop: 48410, Start Num: 67

Candidate Starts for Romney_83:

(Start: 67 @48586 has 133 MA's), (Start: 75 @48559 has 8 MA's), (77, 48550), (84, 48526), (85, 48520), (88, 48481), (92, 48448), (95, 48436),

Gene: Roosevelt_82 Start: 48591, Stop: 48415, Start Num: 67

Candidate Starts for Roosevelt_82:

(Start: 67 @48591 has 133 MA's), (Start: 75 @48564 has 8 MA's), (77, 48555), (84, 48531), (85, 48525), (88, 48486), (92, 48453), (95, 48441),

Gene: Rosa24_80 Start: 48617, Stop: 48441, Start Num: 67

Candidate Starts for Rosa24_80:

(Start: 67 @48617 has 133 MA's), (Start: 75 @48590 has 8 MA's), (77, 48581), (84, 48557), (85, 48551), (88, 48512), (92, 48479), (95, 48467),

Gene: Ruin_84 Start: 48582, Stop: 48406, Start Num: 67

Candidate Starts for Ruin_84:

(Start: 67 @48582 has 133 MA's), (Start: 75 @48555 has 8 MA's), (77, 48546), (84, 48522), (85, 48516), (88, 48477), (92, 48444), (95, 48432),

Gene: Rummer_87 Start: 48176, Stop: 48036, Start Num: 75

Candidate Starts for Rummer_87:

(43, 48302), (45, 48293), (62, 48227), (Start: 73 @48194 has 153 MA's), (Start: 75 @48176 has 8 MA's), (78, 48158), (79, 48155), (89, 48083),

Gene: RyeScarlet_94 Start: 49755, Stop: 49588, Start Num: 73

Candidate Starts for RyeScarlet_94:

(20, 50046), (21, 50037), (29, 49962), (Start: 61 @49779 has 3 MA's), (Start: 72 @49761 has 9 MA's), (Start: 73 @49755 has 153 MA's), (Start: 75 @49737 has 8 MA's), (81, 49713), (83, 49707), (89, 49644), (91, 49629), (92, 49626),

Gene: Sabertooth_84 Start: 48594, Stop: 48418, Start Num: 67

Candidate Starts for Sabertooth_84:

(Start: 67 @48594 has 133 MA's), (Start: 75 @48567 has 8 MA's), (77, 48558), (84, 48534), (85, 48528), (88, 48489), (92, 48456), (95, 48444),

Gene: Sabia_86 Start: 48255, Stop: 48097, Start Num: 73

Candidate Starts for Sabia_86:

(43, 48363), (45, 48354), (54, 48318), (62, 48288), (Start: 73 @48255 has 153 MA's), (Start: 75 @48237 has 8 MA's), (78, 48219), (79, 48216), (89, 48144),

Gene: Sabinator_86 Start: 48168, Stop: 48010, Start Num: 73

Candidate Starts for Sabinator_86:

(43, 48276), (45, 48267), (62, 48201), (Start: 73 @48168 has 153 MA's), (Start: 75 @48150 has 8 MA's), (78, 48132), (79, 48129), (89, 48057),

Gene: Sachima_89 Start: 49784, Stop: 49617, Start Num: 73

Candidate Starts for Sachima_89:

(Start: 73 @49784 has 153 MA's), (Start: 75 @49766 has 8 MA's), (81, 49742), (83, 49736), (89, 49673), (91, 49658), (92, 49655),

Gene: Salz_92 Start: 48647, Stop: 48462, Start Num: 63

Candidate Starts for Salz_92:

(39, 48749), (Start: 63 @48647 has 34 MA's), (Start: 68 @48638 has 55 MA's), (77, 48611), (82, 48590), (93, 48500),

Gene: Scamp_84 Start: 48591, Stop: 48415, Start Num: 67

Candidate Starts for Scamp_84:

(Start: 67 @48591 has 133 MA's), (Start: 75 @48564 has 8 MA's), (77, 48555), (84, 48531), (85, 48525), (88, 48486), (92, 48453), (95, 48441),

Gene: Scherzo_91 Start: 49801, Stop: 49634, Start Num: 73

Candidate Starts for Scherzo_91:

(Start: 73 @49801 has 153 MA's), (Start: 75 @49783 has 8 MA's), (81, 49759), (83, 49753), (89, 49690), (91, 49675), (92, 49672),

Gene: SemperFi_89 Start: 49885, Stop: 49718, Start Num: 73

Candidate Starts for SemperFi_89:

(Start: 73 @49885 has 153 MA's), (Start: 75 @49867 has 8 MA's), (78, 49849), (91, 49759),

Gene: SenorClean_79 Start: 48589, Stop: 48413, Start Num: 67

Candidate Starts for SenorClean_79:

(Start: 67 @48589 has 133 MA's), (Start: 75 @48562 has 8 MA's), (77, 48553), (84, 48529), (85, 48523), (88, 48484), (92, 48451), (95, 48439),

Gene: Serenity_95 Start: 49753, Stop: 49592, Start Num: 68

Candidate Starts for Serenity_95:

(Start: 60 @49768 has 4 MA's), (Start: 68 @49753 has 55 MA's), (74, 49741), (Start: 75 @49735 has 8 MA's), (79, 49714),

Gene: Shaka_82 Start: 48587, Stop: 48411, Start Num: 67

Candidate Starts for Shaka_82:

(Start: 67 @48587 has 133 MA's), (Start: 75 @48560 has 8 MA's), (77, 48551), (84, 48527), (85, 48521), (88, 48482), (92, 48449), (95, 48437),

Gene: Sham4_93 Start: 48721, Stop: 48548, Start Num: 68

Candidate Starts for Sham4_93:

(13, 49078), (44, 48796), (48, 48787), (49, 48778), (Start: 60 @48733 has 4 MA's), (Start: 68 @48721 has 55 MA's), (Start: 75 @48703 has 8 MA's), (77, 48694), (93, 48586),

Gene: SheaKeira_88 Start: 49050, Stop: 48883, Start Num: 73

Candidate Starts for SheaKeira_88:

(3, 49635), (21, 49332), (29, 49257), (Start: 61 @49074 has 3 MA's), (Start: 72 @49056 has 9 MA's), (Start: 73 @49050 has 153 MA's), (Start: 75 @49032 has 8 MA's), (83, 49002), (92, 48921), (97, 48897),

Gene: Sheen_76 Start: 48721, Stop: 48551, Start Num: 73

Candidate Starts for Sheen_76:

(Start: 73 @48721 has 153 MA's), (95, 48577),

Gene: SheldonCooper_84 Start: 49027, Stop: 48851, Start Num: 67

Candidate Starts for SheldonCooper_84:

(Start: 67 @49027 has 133 MA's), (Start: 75 @49000 has 8 MA's), (77, 48991), (84, 48967), (85, 48961), (88, 48922), (92, 48889), (95, 48877),

Gene: Shygu2_82 Start: 48533, Stop: 48357, Start Num: 67

Candidate Starts for Shygu2_82:

(51, 48584), (Start: 67 @48533 has 133 MA's), (Start: 75 @48506 has 8 MA's), (77, 48497), (84, 48473), (85, 48467), (88, 48428), (92, 48395), (95, 48383),

Gene: Skipitt_83 Start: 48583, Stop: 48407, Start Num: 67

Candidate Starts for Skipitt_83:

(Start: 67 @48583 has 133 MA's), (Start: 75 @48556 has 8 MA's), (77, 48547), (84, 48523), (85, 48517), (88, 48478), (92, 48445), (95, 48433),

Gene: Sknot_91 Start: 49700, Stop: 49533, Start Num: 73

Candidate Starts for Sknot_91:

(10, 50093), (12, 50084), (17, 50030), (22, 49976), (Start: 73 @49700 has 153 MA's), (78, 49664), (91, 49574),

Gene: Smeagan_92 Start: 50292, Stop: 50125, Start Num: 70

Candidate Starts for Smeagan_92:

(Start: 70 @50292 has 14 MA's),

Gene: SmellyB_94 Start: 48779, Stop: 48597, Start Num: 63

Candidate Starts for SmellyB_94:

(4, 49280), (5, 49271), (6, 49256), (26, 49013), (32, 48914), (39, 48881), (Start: 63 @48779 has 34 MA's), (79, 48719), (85, 48701), (86, 48686),

Gene: SnapTap_89 Start: 49700, Stop: 49533, Start Num: 73

Candidate Starts for SnapTap_89:

(Start: 73 @49700 has 153 MA's), (Start: 75 @49682 has 8 MA's), (78, 49664), (91, 49574),

Gene: Snape_96 Start: 49514, Stop: 49341, Start Num: 68

Candidate Starts for Snape_96:

(44, 49589), (48, 49580), (49, 49571), (Start: 60 @49526 has 4 MA's), (Start: 68 @49514 has 55 MA's), (Start: 75 @49496 has 8 MA's), (77, 49487), (93, 49379),

Gene: Snickers_84 Start: 48202, Stop: 48062, Start Num: 75

Candidate Starts for Snickers_84:

(43, 48328), (45, 48319), (46, 48316), (54, 48283), (62, 48253), (Start: 73 @48220 has 153 MA's), (Start: 75 @48202 has 8 MA's), (78, 48184), (79, 48181), (89, 48109),

Gene: SoYo_85 Start: 48082, Stop: 47924, Start Num: 73

Candidate Starts for SoYo_85:

(43, 48190), (45, 48181), (62, 48115), (Start: 73 @48082 has 153 MA's), (Start: 75 @48064 has 8 MA's), (78, 48046), (79, 48043), (89, 47971),

Gene: SoilDragon_89 Start: 47690, Stop: 47532, Start Num: 73

Candidate Starts for SoilDragon_89:

(43, 47798), (45, 47789), (62, 47723), (Start: 73 @47690 has 153 MA's), (Start: 75 @47672 has 8 MA's), (78, 47654), (79, 47651), (89, 47579),

Gene: SororFago_89 Start: 49390, Stop: 49223, Start Num: 73

Candidate Starts for SororFago_89:

(Start: 73 @49390 has 153 MA's), (Start: 75 @49372 has 8 MA's), (85, 49333), (91, 49264),

Gene: Soshari_90 Start: 48190, Stop: 48032, Start Num: 73

Candidate Starts for Soshari_90:

(43, 48298), (45, 48289), (62, 48223), (Start: 73 @48190 has 153 MA's), (Start: 75 @48172 has 8 MA's), (78, 48154), (79, 48151), (89, 48079),

Gene: Sparxx_85 Start: 48585, Stop: 48409, Start Num: 67

Candidate Starts for Sparxx_85:

(Start: 67 @48585 has 133 MA's), (Start: 75 @48558 has 8 MA's), (77, 48549), (84, 48525), (85, 48519), (88, 48480), (92, 48447), (95, 48435),

Gene: Spike509_89 Start: 48272, Stop: 48114, Start Num: 73

Candidate Starts for Spike509_89:

(43, 48380), (45, 48371), (62, 48305), (Start: 73 @48272 has 153 MA's), (Start: 75 @48254 has 8 MA's), (78, 48236), (79, 48233), (89, 48161),

Gene: Spino_83 Start: 48589, Stop: 48413, Start Num: 67

Candidate Starts for Spino_83:

(Start: 67 @48589 has 133 MA's), (Start: 75 @48562 has 8 MA's), (77, 48553), (84, 48529), (85, 48523), (88, 48484), (92, 48451), (95, 48439),

Gene: Spouty_91 Start: 49540, Stop: 49373, Start Num: 73

Candidate Starts for Spouty_91:

(Start: 73 @49540 has 153 MA's), (Start: 75 @49522 has 8 MA's), (81, 49498), (83, 49492), (89, 49429), (91, 49414),

Gene: Stagni_85 Start: 48250, Stop: 48092, Start Num: 73

Candidate Starts for Stagni_85:

(43, 48358), (45, 48349), (54, 48313), (62, 48283), (Start: 73 @48250 has 153 MA's), (Start: 75 @48232 has 8 MA's), (78, 48214), (79, 48211), (89, 48139),

Gene: StarStuff_95 Start: 50423, Stop: 50259, Start Num: 68

Candidate Starts for StarStuff_95:

(Start: 68 @50423 has 55 MA's), (Start: 75 @50405 has 8 MA's), (79, 50384),

Gene: Stasia_81 Start: 48574, Stop: 48398, Start Num: 69

Candidate Starts for Stasia_81:

(Start: 69 @48574 has 1 MA's), (Start: 75 @48547 has 8 MA's), (88, 48469), (92, 48436),

Gene: Steamy_80 Start: 48298, Stop: 48131, Start Num: 73

Candidate Starts for Steamy_80:

(52, 48343), (Start: 73 @48298 has 153 MA's), (Start: 75 @48280 has 8 MA's), (83, 48250), (91, 48172), (98, 48142),

Gene: StepMih_89 Start: 48223, Stop: 48083, Start Num: 75

Candidate Starts for StepMih_89:

(43, 48349), (45, 48340), (54, 48304), (62, 48274), (Start: 73 @48241 has 153 MA's), (Start: 75 @48223 has 8 MA's), (78, 48205), (79, 48202), (89, 48130),

Gene: Stink_84 Start: 48813, Stop: 48637, Start Num: 67

Candidate Starts for Stink_84:

(51, 48864), (Start: 67 @48813 has 133 MA's), (Start: 75 @48786 has 8 MA's), (77, 48777), (84, 48753), (85, 48747), (88, 48708), (92, 48675), (95, 48663),

Gene: Sunhee_93 Start: 48229, Stop: 48062, Start Num: 73

Candidate Starts for Sunhee_93:

(58, 48265), (Start: 73 @48229 has 153 MA's), (Start: 75 @48211 has 8 MA's), (81, 48187), (85, 48172), (89, 48118), (91, 48103),

Gene: SuperAwesome_94 Start: 49463, Stop: 49281, Start Num: 63

Candidate Starts for SuperAwesome_94:

(4, 49964), (5, 49955), (6, 49940), (26, 49697), (32, 49598), (39, 49565), (Start: 63 @49463 has 34 MA's), (79, 49403), (85, 49385), (86, 49370),

Gene: SuperCallie99_91 Start: 49035, Stop: 48859, Start Num: 63

Candidate Starts for SuperCallie99_91:

(4, 49536), (5, 49527), (6, 49512), (26, 49269), (32, 49170), (39, 49137), (Start: 63 @49035 has 34 MA's), (Start: 68 @49026 has 55 MA's), (Start: 75 @49008 has 8 MA's), (85, 48969), (95, 48885), (101, 48870),

Gene: Superchunk_93 Start: 49649, Stop: 49476, Start Num: 68

Candidate Starts for Superchunk_93:

(Start: 68 @49649 has 55 MA's), (81, 49607),

Gene: SweetiePie_89 Start: 49833, Stop: 49666, Start Num: 73

Candidate Starts for SweetiePie_89:

(Start: 73 @49833 has 153 MA's), (Start: 75 @49815 has 8 MA's), (78, 49797), (91, 49707),

Gene: SwirlSquare_95 Start: 49045, Stop: 48875, Start Num: 68

Candidate Starts for SwirlSquare_95:

(34, 49189), (38, 49165), (Start: 68 @49045 has 55 MA's), (Start: 75 @49027 has 8 MA's), (91, 48919), (94, 48907), (95, 48904),

Gene: Taquarus_83 Start: 48598, Stop: 48422, Start Num: 67

Candidate Starts for Taquarus_83:

(Start: 67 @48598 has 133 MA's), (Start: 75 @48571 has 8 MA's), (77, 48562), (84, 48538), (85, 48532), (88, 48493), (92, 48460), (95, 48448),

Gene: TarsusIV_88 Start: 49845, Stop: 49678, Start Num: 73

Candidate Starts for TarsusIV_88:

(Start: 73 @49845 has 153 MA's), (Start: 75 @49827 has 8 MA's), (83, 49797), (91, 49719),

Gene: Taurus_89 Start: 48164, Stop: 48006, Start Num: 73

Candidate Starts for Taurus_89:

(43, 48272), (45, 48263), (62, 48197), (Start: 73 @48164 has 153 MA's), (Start: 75 @48146 has 8 MA's), (78, 48128), (79, 48125), (89, 48053),

Gene: Temprado_98 Start: 49443, Stop: 49267, Start Num: 63

Candidate Starts for Temprado_98:

(4, 49944), (5, 49935), (6, 49920), (26, 49677), (32, 49578), (39, 49545), (Start: 63 @49443 has 34 MA's), (Start: 68 @49434 has 55 MA's), (Start: 75 @49416 has 8 MA's), (85, 49377), (101, 49278),

Gene: Terrific_92 Start: 49668, Stop: 49501, Start Num: 73

Candidate Starts for Terrific_92:

(10, 50061), (12, 50052), (17, 49998), (22, 49944), (Start: 73 @49668 has 153 MA's), (78, 49632), (91, 49542),

Gene: Thanksgivukkah_83 Start: 48587, Stop: 48411, Start Num: 67

Candidate Starts for Thanksgivukkah_83:

(Start: 67 @48587 has 133 MA's), (Start: 75 @48560 has 8 MA's), (77, 48551), (84, 48527), (85, 48521), (88, 48482), (92, 48449), (95, 48437),

Gene: Tiffany_87 Start: 48054, Stop: 47896, Start Num: 73

Candidate Starts for Tiffany_87:

(43, 48162), (45, 48153), (62, 48087), (Start: 73 @48054 has 153 MA's), (Start: 75 @48036 has 8 MA's), (78, 48018), (79, 48015), (89, 47943),

Gene: Timothy_96 Start: 49491, Stop: 49318, Start Num: 68

Candidate Starts for Timothy_96:

(13, 49848), (44, 49566), (48, 49557), (49, 49548), (Start: 60 @49503 has 4 MA's), (Start: 68 @49491 has 55 MA's), (Start: 75 @49473 has 8 MA's), (77, 49464), (93, 49356),

Gene: Timshel_76 Start: 48693, Stop: 48517, Start Num: 65

Candidate Starts for Timshel_76:

(16, 49020), (19, 48978), (27, 48909), (28, 48891), (39, 48801), (Start: 65 @48693 has 3 MA's), (71, 48681), (77, 48654), (83, 48630), (87, 48609), (89, 48573), (95, 48543),

Gene: TinaFeyge_82 Start: 48584, Stop: 48408, Start Num: 67

Candidate Starts for TinaFeyge_82:

(Start: 67 @48584 has 133 MA's), (Start: 75 @48557 has 8 MA's), (77, 48548), (84, 48524), (85, 48518), (88, 48479), (92, 48446), (95, 48434),

Gene: TinyPebbles_84 Start: 48198, Stop: 48040, Start Num: 73

Candidate Starts for TinyPebbles_84:

(43, 48306), (45, 48297), (62, 48231), (Start: 73 @48198 has 153 MA's), (Start: 75 @48180 has 8 MA's), (78, 48162), (79, 48159), (89, 48087),

Gene: TinyTimmy_94 Start: 49232, Stop: 49047, Start Num: 60

Candidate Starts for TinyTimmy_94:

(44, 49295), (48, 49286), (49, 49277), (Start: 60 @49232 has 4 MA's), (Start: 68 @49220 has 55 MA's), (Start: 75 @49202 has 8 MA's), (77, 49193), (93, 49085),

Gene: Tinybot_83 Start: 48616, Stop: 48440, Start Num: 67

Candidate Starts for Tinybot_83:

(Start: 67 @48616 has 133 MA's), (Start: 75 @48589 has 8 MA's), (77, 48580), (84, 48556), (85, 48550), (88, 48511), (92, 48478), (95, 48466),

Gene: TipsytheTRex_92 Start: 49970, Stop: 49809, Start Num: 68

Candidate Starts for TipsytheTRex_92:

(48, 50036), (49, 50027), (Start: 60 @49982 has 4 MA's), (Start: 68 @49970 has 55 MA's), (74, 49958), (Start: 75 @49952 has 8 MA's), (79, 49931),

Gene: TiroTheta9_83 Start: 48583, Stop: 48407, Start Num: 67

Candidate Starts for TiroTheta9_83:

(Start: 67 @48583 has 133 MA's), (Start: 75 @48556 has 8 MA's), (77, 48547), (84, 48523), (85, 48517), (88, 48478), (92, 48445), (95, 48433),

Gene: Toaka_91 Start: 49670, Stop: 49503, Start Num: 73

Candidate Starts for Toaka_91:

(Start: 55 @49715 has 1 MA's), (Start: 61 @49694 has 3 MA's), (Start: 72 @49676 has 9 MA's), (Start: 73 @49670 has 153 MA's), (Start: 75 @49652 has 8 MA's), (83, 49622), (91, 49544),

Gene: Tomathan_95 Start: 50502, Stop: 50338, Start Num: 68

Candidate Starts for Tomathan_95:

(Start: 68 @50502 has 55 MA's), (Start: 75 @50484 has 8 MA's), (79, 50463),

Gene: ToneTone_93 Start: 48994, Stop: 48818, Start Num: 63

Candidate Starts for ToneTone_93:

(4, 49495), (5, 49486), (6, 49471), (26, 49228), (32, 49129), (39, 49096), (Start: 63 @48994 has 34 MA's), (Start: 68 @48985 has 55 MA's), (Start: 75 @48967 has 8 MA's), (85, 48928), (101, 48829),

Gene: Toro_77 Start: 49384, Stop: 49214, Start Num: 73

Candidate Starts for Toro_77:

(Start: 73 @49384 has 153 MA's), (95, 49240),

Gene: Travvers_95 Start: 50419, Stop: 50255, Start Num: 68

Candidate Starts for Travvers_95:

(Start: 68 @50419 has 55 MA's), (Start: 75 @50401 has 8 MA's), (79, 50380),

Gene: Tristan_87 Start: 50591, Stop: 50406, Start Num: 61

Candidate Starts for Tristan_87:

(42, 50681), (Start: 61 @50591 has 3 MA's), (102, 50414),

Gene: Trixie_89 Start: 50409, Stop: 50242, Start Num: 73

Candidate Starts for Trixie_89:

(14, 50778), (Start: 61 @50442 has 3 MA's), (Start: 73 @50409 has 153 MA's), (74, 50397), (Start: 75 @50391 has 8 MA's), (91, 50283),

Gene: Trooper_89 Start: 49440, Stop: 49276, Start Num: 73

Candidate Starts for Trooper_89:

(Start: 73 @49440 has 153 MA's), (Start: 75 @49422 has 8 MA's), (99, 49284),

Gene: TroyPia_85 Start: 48624, Stop: 48448, Start Num: 67

Candidate Starts for TroyPia_85:

(Start: 67 @48624 has 133 MA's), (Start: 75 @48597 has 8 MA's), (77, 48588), (84, 48564), (85, 48558), (88, 48519), (92, 48486), (95, 48474),

Gene: Tubs_93 Start: 49763, Stop: 49590, Start Num: 72

Candidate Starts for Tubs_93:

(20, 50048), (29, 49964), (Start: 61 @49781 has 3 MA's), (Start: 72 @49763 has 9 MA's), (Start: 73 @49757 has 153 MA's), (Start: 75 @49739 has 8 MA's), (81, 49715), (83, 49709), (89, 49646), (91, 49631), (92, 49628),

Gene: Tucker_97 Start: 49188, Stop: 49021, Start Num: 68

Candidate Starts for Tucker_97:

(4, 49698), (5, 49689), (6, 49674), (26, 49431), (32, 49332), (39, 49299), (Start: 63 @49197 has 34 MA's), (Start: 68 @49188 has 55 MA's), (Start: 75 @49170 has 8 MA's), (85, 49131), (101, 49032),

Gene: Turbido_91 Start: 50126, Stop: 49959, Start Num: 73

Candidate Starts for Turbido_91:

(Start: 73 @50126 has 153 MA's), (Start: 75 @50108 has 8 MA's), (91, 50000),

Gene: TygerBlood_84 Start: 48589, Stop: 48413, Start Num: 67

Candidate Starts for TygerBlood_84:

(Start: 67 @48589 has 133 MA's), (Start: 75 @48562 has 8 MA's), (77, 48553), (84, 48529), (85, 48523), (88, 48484), (92, 48451), (95, 48439),

Gene: Ugenie5_80 Start: 47245, Stop: 47078, Start Num: 73

Candidate Starts for Ugenie5_80:

(Start: 73 @47245 has 153 MA's), (Start: 75 @47227 has 8 MA's), (81, 47203), (83, 47197), (89, 47134), (91, 47119), (92, 47116),

Gene: Ulysses_83 Start: 48272, Stop: 48096, Start Num: 67

Candidate Starts for Ulysses_83:

(Start: 67 @48272 has 133 MA's), (Start: 75 @48245 has 8 MA's), (77, 48236), (84, 48212), (85, 48206), (88, 48167), (92, 48134), (95, 48122),

Gene: Updawg_92 Start: 49888, Stop: 49721, Start Num: 73

Candidate Starts for Updawg_92:

(10, 50281), (12, 50272), (17, 50218), (22, 50164), (Start: 73 @49888 has 153 MA's), (78, 49852), (91, 49762),

Gene: VA6_89 Start: 49771, Stop: 49604, Start Num: 70

Candidate Starts for VA6_89:

(Start: 61 @49789 has 3 MA's), (Start: 70 @49771 has 14 MA's),

Gene: VC3_90 Start: 48518, Stop: 48351, Start Num: 68

Candidate Starts for VC3_90:

(Start: 68 @48518 has 55 MA's), (Start: 75 @48500 has 8 MA's), (102, 48359),

Gene: Vanisoa_88 Start: 49961, Stop: 49794, Start Num: 73

Candidate Starts for Vanisoa_88:

(Start: 73 @49961 has 153 MA's), (Start: 75 @49943 has 8 MA's), (83, 49913), (95, 49820),

Gene: Vix_84 Start: 48249, Stop: 48091, Start Num: 73

Candidate Starts for Vix_84:

(43, 48357), (45, 48348), (62, 48282), (Start: 73 @48249 has 153 MA's), (Start: 75 @48231 has 8 MA's), (78, 48213), (79, 48210), (89, 48138),

Gene: VohminGhazi_94 Start: 48780, Stop: 48598, Start Num: 63

Candidate Starts for VohminGhazi_94:

(4, 49281), (5, 49272), (6, 49257), (26, 49014), (32, 48915), (39, 48882), (Start: 63 @48780 has 34 MA's), (79, 48720), (85, 48702), (86, 48687),

Gene: Wander_84 Start: 48583, Stop: 48407, Start Num: 67

Candidate Starts for Wander_84:

(Start: 67 @48583 has 133 MA's), (Start: 75 @48556 has 8 MA's), (77, 48547), (84, 48523), (85, 48517), (88, 48478), (92, 48445), (95, 48433),

Gene: Watson_88 Start: 48239, Stop: 48081, Start Num: 73

Candidate Starts for Watson_88:

(43, 48347), (45, 48338), (54, 48302), (62, 48272), (Start: 73 @48239 has 153 MA's), (Start: 75 @48221 has 8 MA's), (78, 48203), (79, 48200), (89, 48128),

Gene: WeiHuaDA_91 Start: 50453, Stop: 50286, Start Num: 73
Candidate Starts for WeiHuaDA_91:
(47, 50528), (64, 50471), (Start: 73 @50453 has 153 MA's), (74, 50441), (Start: 75 @50435 has 8 MA's), (91, 50327),

Gene: Whabigail7_89 Start: 50124, Stop: 49957, Start Num: 73
Candidate Starts for Whabigail7_89:
(Start: 73 @50124 has 153 MA's), (Start: 75 @50106 has 8 MA's), (91, 49998),

Gene: WideWale_92 Start: 49888, Stop: 49721, Start Num: 73
Candidate Starts for WideWale_92:
(10, 50281), (12, 50272), (17, 50218), (22, 50164), (Start: 73 @49888 has 153 MA's), (78, 49852), (91, 49762),

Gene: Wiks_96 Start: 49065, Stop: 48898, Start Num: 68
Candidate Starts for Wiks_96:
(4, 49575), (6, 49551), (26, 49308), (32, 49209), (39, 49176), (Start: 63 @49074 has 34 MA's), (Start: 68 @49065 has 55 MA's), (Start: 75 @49047 has 8 MA's), (85, 49008), (101, 48909),

Gene: Wilbur_84 Start: 48586, Stop: 48410, Start Num: 67
Candidate Starts for Wilbur_84:
(Start: 67 @48586 has 133 MA's), (Start: 75 @48559 has 8 MA's), (77, 48550), (84, 48526), (85, 48520), (88, 48481), (92, 48448), (95, 48436),

Gene: Wile_80 Start: 48440, Stop: 48261, Start Num: 67
Candidate Starts for Wile_80:
(Start: 67 @48440 has 133 MA's), (76, 48404), (88, 48332), (89, 48317), (92, 48299),

Gene: Wizard007_81 Start: 48166, Stop: 47987, Start Num: 67
Candidate Starts for Wizard007_81:
(Start: 67 @48166 has 133 MA's), (76, 48130), (88, 48058), (89, 48043), (92, 48025),

Gene: Wooldri_90 Start: 48075, Stop: 47917, Start Num: 73
Candidate Starts for Wooldri_90:
(43, 48183), (45, 48174), (62, 48108), (Start: 73 @48075 has 153 MA's), (Start: 75 @48057 has 8 MA's), (78, 48039), (79, 48036), (89, 47964),

Gene: Xena_80 Start: 48408, Stop: 48232, Start Num: 67
Candidate Starts for Xena_80:
(51, 48459), (Start: 67 @48408 has 133 MA's), (Start: 75 @48381 has 8 MA's), (77, 48372), (84, 48348), (85, 48342), (88, 48303), (92, 48270), (95, 48258),

Gene: Yecey3_95 Start: 49670, Stop: 49503, Start Num: 73
Candidate Starts for Yecey3_95:
(Start: 61 @49694 has 3 MA's), (Start: 72 @49676 has 9 MA's), (Start: 73 @49670 has 153 MA's), (77, 49643), (83, 49622),

Gene: YoSam321_84 Start: 48584, Stop: 48408, Start Num: 67
Candidate Starts for YoSam321_84:
(Start: 67 @48584 has 133 MA's), (Start: 75 @48557 has 8 MA's), (77, 48548), (84, 48524), (85, 48518), (88, 48479), (92, 48446), (95, 48434),

Gene: Yokurt_96 Start: 49074, Stop: 48898, Start Num: 63

Candidate Starts for Yokurt_96:

(4, 49575), (5, 49566), (6, 49551), (26, 49308), (32, 49209), (39, 49176), (Start: 63 @49074 has 34 MA's), (Start: 68 @49065 has 55 MA's), (Start: 75 @49047 has 8 MA's), (85, 49008), (101, 48909),

Gene: Zaka_97 Start: 49074, Stop: 48898, Start Num: 63

Candidate Starts for Zaka_97:

(4, 49575), (5, 49566), (6, 49551), (26, 49308), (32, 49209), (39, 49176), (Start: 63 @49074 has 34 MA's), (Start: 68 @49065 has 55 MA's), (Start: 75 @49047 has 8 MA's), (85, 49008), (101, 48909),

Gene: Zetzy_80 Start: 45629, Stop: 45471, Start Num: 73

Candidate Starts for Zetzy_80:

(43, 45737), (45, 45728), (66, 45653), (Start: 73 @45629 has 153 MA's), (Start: 75 @45611 has 8 MA's), (78, 45593), (79, 45590), (89, 45518),

Gene: Zimmer_83 Start: 48712, Stop: 48545, Start Num: 73

Candidate Starts for Zimmer_83:

(21, 48997), (23, 48988), (Start: 73 @48712 has 153 MA's), (Start: 75 @48694 has 8 MA's), (83, 48664), (91, 48586), (98, 48556),

Gene: Zulu_98 Start: 49442, Stop: 49275, Start Num: 68

Candidate Starts for Zulu_98:

(4, 49952), (5, 49943), (6, 49928), (26, 49685), (32, 49586), (39, 49553), (Start: 63 @49451 has 34 MA's), (Start: 68 @49442 has 55 MA's), (Start: 75 @49424 has 8 MA's), (85, 49385), (101, 49286),