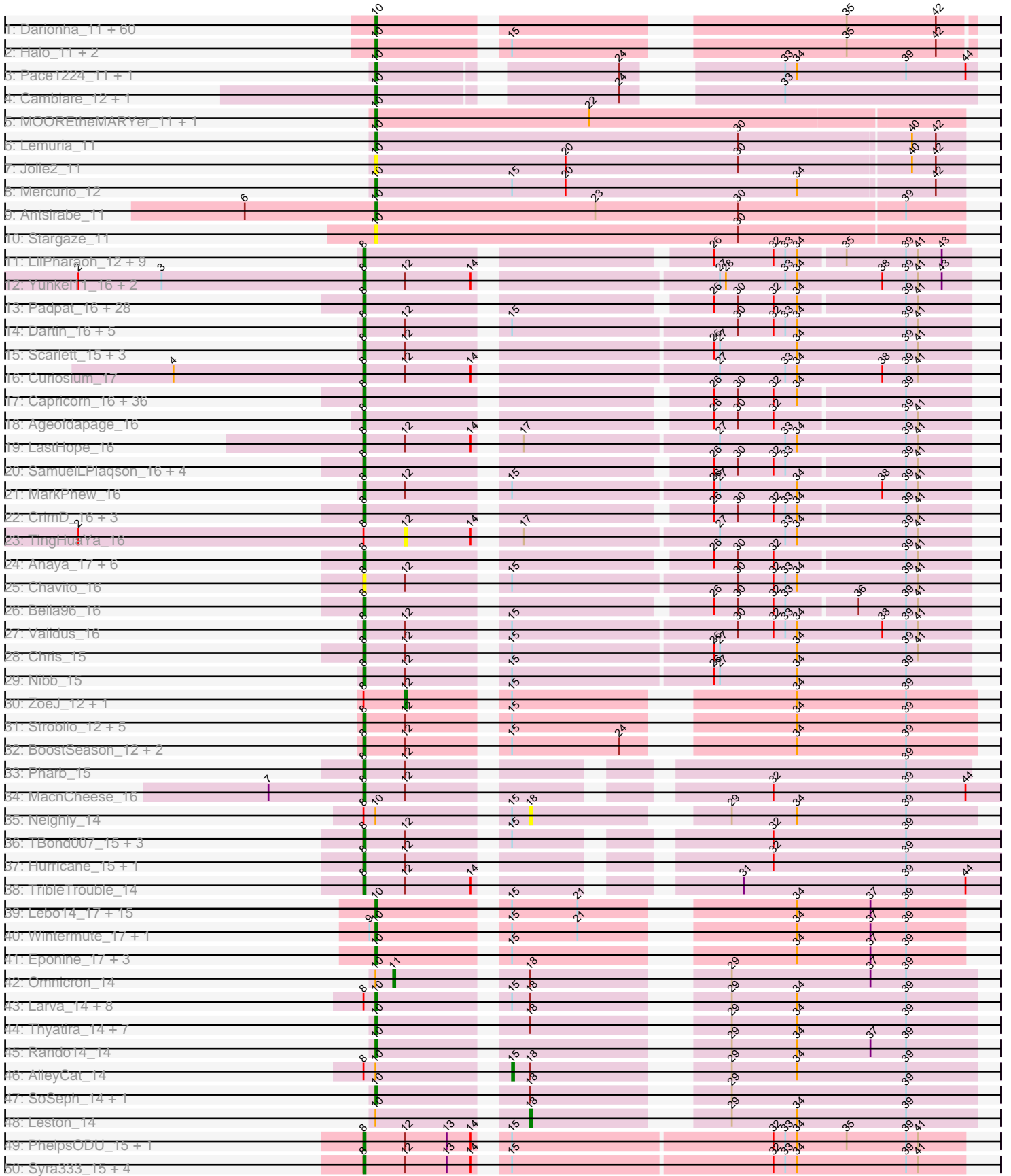
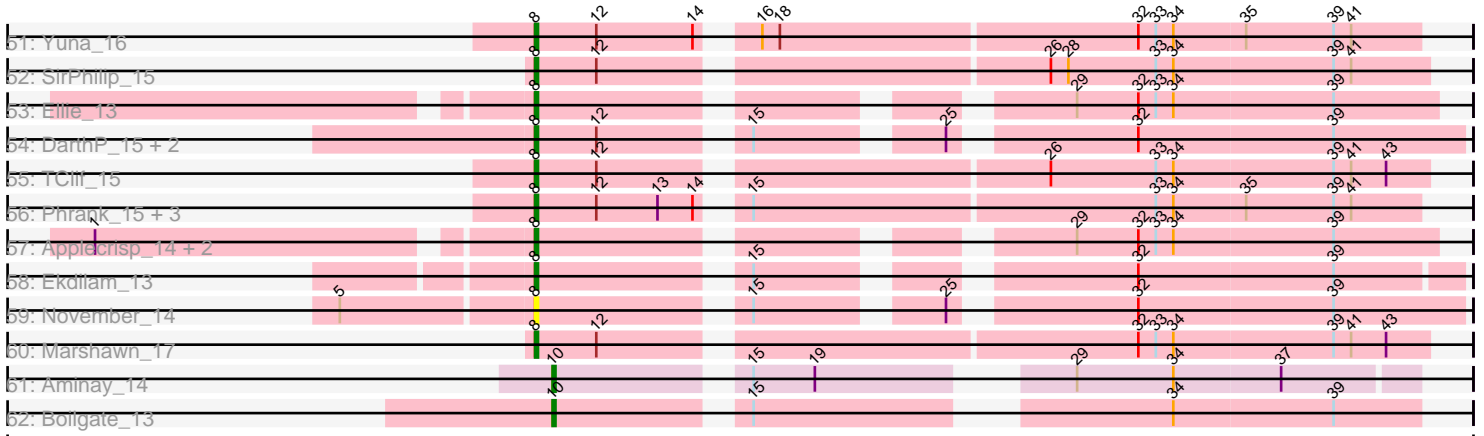


Pham 217560



Pham 217560



Note: Tracks are now grouped by subcluster and scaled. Switching in subcluster is indicated by changes in track color. Track scale is now set by default to display the region 30 bp upstream of start 1 to 30 bp downstream of the last possible start. If this default region is judged to be packed too tightly with annotated starts, the track will be further scaled to only show that region of the ORF with annotated starts. This action will be indicated by adding "Zoomed" to the title. For starts, yellow indicates the location of called starts comprised solely of Glimmer/GeneMark auto-annotations, green indicates the location of called starts with at least 1 manual gene annotation.

Pham 217560 Report

This analysis was run 03/28/25 on database version 593.

Pham number 217560 has 282 members, 28 are drafts.

Phages represented in each track:

- Track 1 : Darionha_11, PinkYoshi_11, CLED96_11, ShaboiShabazz_11, Frosty24_11, ZoMa_11, Gomashi_11, DMoney_11, LouisV14_11, Jolene_11, Jane_11, BQuat_11, Remy19_11, Cedasite_11, CassieYates_11, Angel_11, Coleslaw_11, ECartman_11, OctaviousRex_11, Kasen3_11, Crespo_11, AzulaCat_11, Gideon_11, DNAIII_0011, Peeb_11, Maliketh_11, Taheera_11, Terror_11, Periodt_11, Avrafan_11, Rabbs_11, Jonghyun_11, Schiebel_11, Plagueis_11, Sneeze_11, Olga_11, Aroostook_11, Barkley26_11, Phish_11, Zombie_11, Hope_11, Hotshotbaby7_11, Kareem_11, Mowgli_11, Sizemore_11, Wendigo_11, Chance64_11, BruceB_11, Marmie_11, Camri_11, JorRay_11, Paito_11, Renaissance_11, Cherrybomb426_11, Grizzly_11, TomBrady_11, Annihilator_11, Phreak_11, GoldenAsh_11, Liefie_11, BPs_11
- Track 2 : Halo_11, TinaBug_11, Sweets_11
- Track 3 : Pace1224_11, FlagStaff_11
- Track 4 : Cambiare_12, Avocado_11
- Track 5 : MOOREtheMARYer_11, Pinnie_12
- Track 6 : Lemuria_11
- Track 7 : Jolie2_11
- Track 8 : Mercurio_12
- Track 9 : Antsirabe_11
- Track 10 : Stargaze_11
- Track 11 : LilPharaoh_12, Enkosi_12, Mdavu_12, Nutello_12, Amelie_12, Binglebops_12, SgtBeansprout_12, Nikao_12, Teejan_12, Torres_12
- Track 12 : Yunkel11_16, Guanica15_16, Efra2_16
- Track 13 : Padpat_16, Clipper_17, CheetoDust_16, CallaLilly_16, Atiba_16, Adephegia_16, Tachez_16, HedwigODU_16, YoureAdopted_15, MeaningOfLife_16, TaiwanKao_16, Emerson_16, Beezoo_16, Jayhawk_16, Rapunzel97_16, Slimphazie_16, TruffulaTree_16, Geraldini_16, MacKat_16, Apocalypse_16, Ramen_16, Mynx_16, Megsy_16, Zabiza_16, AlishaPH_16, ActinUp_16, Zavala_16, BaghaKamala_16, Joy99_16
- Track 14 : Dartin_16, Shaobing_16, Richo_16, McMater_16, Peanam_16, Niklas_16
- Track 15 : Scarlett_15, KiSi_15, LeMond_15, Oscar_15
- Track 16 : Curiosium_17
- Track 17 : Capricorn_16, Blizzard_16, Adonis_16, Belladonna_16, BEEST_16, JAWS_16, Homura_16, Spock_16, Twitch_16, QuincyRose_15, Ganymede_16, ShiaSurprise_16, Sulley_16, Llorens_16, CREW_16, Rosmarinus_16, BarrelRoll_16, CaseJules_16, Jarvi_16, Tiri_16, Asayake_16, Peel_16, BGIluviae_16, Lunahalos_16, Padfoot_16, Piatt_16, Boiiii_16, Topper_16, Dalmuri_16,

Hyperbowlee_16, Pokerus_15, Inky_16, Jeckyll_16, Veliki_16, Deby_16, Durfee_16, Angelica_16

- Track 18 : Ageofdapage_16
- Track 19 : LastHope_16
- Track 20 : SamuelLPlaqson_16, DrHayes_16, TiniBug_16, Bern_17, Urkel_16
- Track 21 : MarkPhew_16
- Track 22 : CrimD_16, TreyKay_16, Prithvi_16, LindNT_16
- Track 23 : TingHuaYa_16
- Track 24 : Anaya_17, Dole_16, Murucutumbu_16, Devera_16, Illumine_16, Stinson_16, LaterM_16
- Track 25 : Chavito_16
- Track 26 : Bella96_16
- Track 27 : Validus_16
- Track 28 : Chris_15
- Track 29 : Nibb_15
- Track 30 : ZoeJ_12, TM4_12
- Track 31 : Strobilo_12, Milly_12, DismalFunk_12, Marcoliusprime_12, Findley_12, DismalStressor_12
- Track 32 : BoostSeason_12, Mufasa_12, Doughnut_12
- Track 33 : Pharb_15
- Track 34 : MacnCheese_16
- Track 35 : Neighly_14
- Track 36 : TBond007_15, Lea83_16, ShedlockHolmes_15, Pixie_15
- Track 37 : Hurricane_15, Keshu_15
- Track 38 : TribbleTrouble_14
- Track 39 : Lebo14_17, JF1_17, Slarp_17, Y10_17, Mitti_17, OmniCritical_17, Chancellor_17, Kraw_17, MissDaisy_17, Malthus_17, Bobquesha_17, Cheetobro_17, SamScheppers_15, Reptar3000_17, Y2_17, Patt_17
- Track 40 : Wintermute_17, Fionnbharth_17
- Track 41 : Eponine_17, Taquito_15, Ruthiejr_16, Juliette_17
- Track 42 : Omnicron_14
- Track 43 : Larva_14, Collard_14, Kratio_13, Dadosky_14, InvictusManeo_14, ViviJ_13, Psycho_14, Agent47_14, Edugator_13
- Track 44 : Thyatira_14, OkiRoe_14, Miryou_14, Waterfoul_14, Guillsminger_14, Gengar_14, Feyre_14, Paola_14
- Track 45 : Rando14_14
- Track 46 : AlleyCat_14
- Track 47 : SoSeph_14, Heftyboy_14
- Track 48 : Leston_14
- Track 49 : PhelpsODU_15, Unicorn_15
- Track 50 : Syra333_15, Shadow1_14, Ximenita_16, Sunflower1121_14, Krueger_15
- Track 51 : Yuna_16
- Track 52 : SirPhilip_15
- Track 53 : Ellie_13
- Track 54 : DarthP_15, Amohnition_15, Hammy_15
- Track 55 : TClif_15
- Track 56 : Phrank_15, Bryler_15, Tierra_15, Cain_15
- Track 57 : Applecrisp_14, Fefferhead_15, Amgine_14
- Track 58 : Ekdilam_13
- Track 59 : November_14
- Track 60 : Marshawn_17
- Track 61 : Aminay_14
- Track 62 : Boilgate_13

Summary of Final Annotations (See graph section above for start numbers):

The start number called the most often in the published annotations is 8, it was called in 141 of the 254 non-draft genes in the pham.

Genes that call this "Most Annotated" start:

- ActinUp_16, Adephegia_16, Adonis_16, Ageofdapage_16, AlishaPH_16, Amelie_12, Amgine_14, Amohnition_15, Anaya_17, Angelica_16, Apocalypse_16, Applecrisp_14, Asayake_16, Atiba_16, BEEST_16, BGIluviae_16, BaghaKamala_16, BarrelRoll_16, Beezoo_16, Bella96_16, Belladonna_16, Bern_17, Biglebops_12, Blizzard_16, Boiiii_16, BoostSeason_12, Bryler_15, CREW_16, Cain_15, CallaLilly_16, Capricorn_16, CaseJules_16, Chavito_16, CheetoDust_16, Chris_15, Clipper_17, CrimD_16, Curiosium_17, Dalmuri_16, DarthP_15, Dartin_16, Deby_16, Devera_16, DismalFunk_12, DismalStressor_12, Dole_16, Doughnut_12, DrHayes_16, Durfee_16, Efra2_16, Ekdilam_13, Ellie_13, Emerson_16, Enkosi_12, Fefferhead_15, Findley_12, Ganymede_16, Geraldini_16, Guanica15_16, Hammy_15, HedwigODU_16, Homura_16, Hurricane_15, Hyperbowlee_16, Illumine_16, Inky_16, JAWS_16, Jarvi_16, Jayhawk_16, Jeckyll_16, Joy99_16, Keshu_15, KiSi_15, Krueger_15, LastHope_16, LaterM_16, LeMond_15, Lea83_16, LilPharaoh_12, LindNT_16, Llorens_16, Lunahalos_16, MacKat_16, MacnCheese_16, Marcoliusprime_12, MarkPhew_16, Marshawn_17, McMater_16, Mdavu_12, MeaningOfLife_16, Megsy_16, Milly_12, Mufasa_12, Murucutumbu_16, Mynx_16, Nibb_15, Nikao_12, Niklas_16, November_14, Nutello_12, Oscar_15, Padfoot_16, Padpat_16, Peanam_16, Peel_16, Pharb_15, PhelpsODU_15, Phrank_15, Piatt_16, Pixie_15, Pokerus_15, Prithvi_16, QuincyRose_15, Ramen_16, Rapunzel97_16, Richo_16, Rosmarinus_16, SamuelLPlaqson_16, Scarlett_15, SgtBeansprout_12, Shadow1_14, Shaobing_16, ShedlockHolmes_15, ShiaSurprise_16, SirPhilip_15, Slimphazie_16, Spock_16, Stinson_16, Strobilo_12, Sulley_16, Sunflower1121_14, Syra333_15, TBond007_15, TClif_15, Tachez_16, TaiwanKao_16, Teejan_12, Tierra_15, TiniBug_16, Tiri_16, Topper_16, Torres_12, TreyKay_16, TribbleTrouble_14, TruffulaTree_16, Twitch_16, Unicorn_15, Urkel_16, Validus_16, Veliki_16, Ximenita_16, YoureAdopted_15, Yuna_16, Yunkel11_16, Zabiza_16, Zavala_16,

Genes that have the "Most Annotated" start but do not call it:

- Agent47_14, AlleyCat_14, Collard_14, Dadosky_14, Edugator_13, InvictusManeo_14, Kratio_13, Larva_14, Neighly_14, Psycho_14, TM4_12, TingHuaYa_16, ViviJ_13, ZoeJ_12,

Genes that do not have the "Most Annotated" start:

- Aminay_14, Angel_11, Annihilator_11, Antsirabe_11, Aroostook_11, Avocado_11, Avrafan_11, AzulaCat_11, BPs_11, BQuat_11, Barkley26_11, Bobquesha_17, Boilgate_13, BruceB_11, CLED96_11, Cambiare_12, Camri_11, CassieYates_11, Cedasite_11, Chance64_11, Chancellor_17, Cheetobro_17, Cherrybomb426_11, Coleslaw_11, Crespo_11, DMoney_11, DNAIII_0011, Darionha_11, ECartman_11, Eponine_17, Feyre_14, Fionnbharth_17, FlagStaff_11, Frosty24_11, Gengar_14, Gideon_11, GoldenAsh_11, Gomashi_11, Grizzly_11, Guillsminger_14, Halo_11, Heftyboy_14, Hope_11, Hotshotbaby7_11, JF1_17, Jane_11, Jolene_11, Jolie2_11, Jonghyun_11, JorRay_11, Juliette_17, Kareem_11, Kasen3_11, Kraw_17,

Lebo14_17, Lemuria_11, Leston_14, Liefie_11, LouisV14_11, MOOREtheMARYer_11, Maliketh_11, Malthus_17, Marmie_11, Mercurio_12, Miryou_14, MissDaisy_17, Mitti_17, Mowgli_11, OctaviousRex_11, OkiRoe_14, Olga_11, OmniCritical_17, Omnicron_14, Pace1224_11, Paito_11, Paola_14, Patt_17, Peeb_11, Periodt_11, Phish_11, Phreak_11, PinkYoshi_11, Pinnie_12, Plagueis_11, Rabbs_11, Rando14_14, Remy19_11, Renaissance_11, Reptar3000_17, Ruthiejr_16, SamScheppers_15, Schiebel_11, ShaboiShabazz_11, Sizemore_11, Slarp_17, Sneeze_11, SoSeph_14, Stargaze_11, Sweets_11, Taheera_11, Taquito_15, Terror_11, Thyatira_14, TinaBug_11, TomBrady_11, Waterfoul_14, Wendigo_11, Wintermute_17, Y10_17, Y2_17, ZoMa_11, Zombie_11,

Summary by start number:

Start 8:

- Found in 170 of 282 (60.3%) of genes in pham
- Manual Annotations of this start: 141 of 254
- Called 91.8% of time when present
- Phage (with cluster) where this start called: ActinUp_16 (K1), Adephagia_16 (K1), Adonis_16 (K1), Ageofdapage_16 (K1), AlishaPH_16 (K1), Amelie_12 (K1), Amgine_14 (K6), Amohntion_15 (K6), Anaya_17 (K1), Angelica_16 (K1), Apocalypse_16 (K1), Applecrisp_14 (K6), Asayake_16 (K1), Atiba_16 (K1), BEEST_16 (K1), BGlluviae_16 (K1), BaghaKamala_16 (K1), BarrelRoll_16 (K1), Beezoo_16 (K1), Bella96_16 (K1), Belladonna_16 (K1), Bern_17 (K1), Binglebops_12 (K1), Blizzard_16 (K1), Boiiii_16 (K1), BoostSeason_12 (K2), Bryler_15 (K6), CREW_16 (K1), Cain_15 (K6), CallaLilly_16 (K1), Capricorn_16 (K1), CaseJules_16 (K1), Chavito_16 (K1), CheetoDust_16 (K1), Chris_15 (K1), Clipper_17 (K1), CrimD_16 (K1), Curiosium_17 (K1), Dalmuri_16 (K1), DarthP_15 (K6), Dartin_16 (K1), Deby_16 (K1), Devera_16 (K1), DismalFunk_12 (K2), DismalStressor_12 (K2), Dole_16 (K1), Doughnut_12 (K2), DrHayes_16 (K1), Durfee_16 (K1), Efra2_16 (K1), Ekdilam_13 (K6), Ellie_13 (K6), Emerson_16 (K1), Enkosi_12 (K1), Fefferhead_15 (K6), Findley_12 (K2), Ganymede_16 (K1), Geraldini_16 (K1), Guanica15_16 (K1), Hammy_15 (K6), HedwigODU_16 (K1), Homura_16 (K1), Hurricane_15 (K3), Hyperbowlee_16 (K1), Illumine_16 (K1), Inky_16 (K1), JAWS_16 (K1), Jarvi_16 (K1), Jayhawk_16 (K1), Jeckyll_16 (K1), Joy99_16 (K1), Keshu_15 (K3), KiSi_15 (K1), Krueger_15 (K6), LastHope_16 (K1), LaterM_16 (K1), LeMond_15 (K1), Lea83_16 (K3), LilPharaoh_12 (K1), LindNT_16 (K1), Llorens_16 (K1), Lunahalos_16 (K1), MackKat_16 (K1), MacnCheese_16 (K3), Marcoliusprime_12 (K2), MarkPhew_16 (K1), Marshawn_17 (K6), McMater_16 (K1), Mdavu_12 (K1), MeaningOfLife_16 (K1), Megsy_16 (K1), Milly_12 (K2), Mufasa_12 (K2), Murucutumbu_16 (K1), Mynx_16 (K1), Nibb_15 (K1), Nikao_12 (K1), Niklas_16 (K1), November_14 (K6), Nutello_12 (K1), Oscar_15 (K1), Padfoot_16 (K1), Padpat_16 (K1), Peanam_16 (K1), Peel_16 (K1), Pharb_15 (K3), PhelpsODU_15 (K6), Phrank_15 (K6), Piatt_16 (K1), Pixie_15 (K3), Pokerus_15 (K1), Prithvi_16 (K1), QuincyRose_15 (K1), Ramen_16 (K1), Rapunzel97_16 (K1), Richo_16 (K1), Rosmarinus_16 (K1), SamuelLPlaqson_16 (K1), Scarlett_15 (K1), SgtBeansprout_12 (K1), Shadow1_14 (K6), Shaobing_16 (K1), ShedlockHolmes_15 (K3), ShiaSurprise_16 (K1), SirPhilip_15 (K6), Slimphazie_16 (K1), Spock_16 (K1), Stinson_16 (K1), Strobilo_12 (K2), Sulley_16 (K1), Sunflower1121_14 (K6), Syra333_15 (K6), TBond007_15 (K3), TClif_15 (K6), Tachez_16 (K1), TaiwanKao_16 (K1), Teejan_12 (K1), Tierra_15 (K6), TiniBug_16 (K1), Tiri_16 (K1), Topper_16 (K1), Torres_12 (K1), TreyKay_16 (K1), TribbleTrouble_14 (K3), TruffulaTree_16 (K1), Twitch_16 (K1), Unicorn_15 (K6), Urkel_16 (K1), Validus_16 (K1), Veliki_16 (K1), Ximenita_16 (K6), YoureAdopted_15 (K1), Yuna_16 (K6), Yunkel11_16 (K1), Zabiza_16 (K1), Zavala_16 (K1),

Start 10:

- Found in 123 of 282 (43.6%) of genes in pham
- Manual Annotations of this start: 108 of 254
- Called 96.7% of time when present
- Phage (with cluster) where this start called: Agent47_14 (K5), Aminay_14 (K7), Angel_11 (G1), Annihilator_11 (G1), Antsirabe_11 (G5), Aroostook_11 (G1), Avocado_11 (G2), Avrafan_11 (G1), AzulaCat_11 (G1), BPs_11 (G1), BQuat_11 (G1), Barkley26_11 (G1), Bobquesha_17 (K4), Boilgate_13 (K8), BruceB_11 (G1), CLED96_11 (G1), Cambiare_12 (G2), Camri_11 (G1), CassieYates_11 (G1), Cedasite_11 (G1), Chance64_11 (G1), Chancellor_17 (K4), Cheetobro_17 (K4), Cherrybomb426_11 (G1), Coleslaw_11 (G1), Collard_14 (K5), Crespo_11 (G1), DMoney_11 (G1), DNAIII_0011 (G1), Dadosky_14 (K5), Darionha_11 (G1), ECartman_11 (G1), Edugator_13 (K5), Eponine_17 (K4), Feyre_14 (K5), Fionnbharth_17 (K4), FlagStaff_11 (G2), Frosty24_11 (G1), Gengar_14 (K5), Gideon_11 (G1), GoldenAsh_11 (G1), Gomashi_11 (G1), Grizzly_11 (G1), Guillsminger_14 (K5), Halo_11 (G1), Heftyboy_14 (K5), Hope_11 (G1), Hotshotbaby7_11 (G1), InvictusManeo_14 (K5), JF1_17 (K4), Jane_11 (G1), Jolene_11 (G1), Jolie2_11 (G4), Jonghyun_11 (G1), JorRay_11 (G1), Juliette_17 (K4), Kareem_11 (G1), Kasen3_11 (G1), Kratio_13 (K5), Kraw_17 (K4), Larva_14 (K5), Lebo14_17 (K4), Lemuria_11 (G4), Liefie_11 (G1), LouisV14_11 (G1), MOOREtheMARYer_11 (G3), Maliketh_11 (G1), Malthus_17 (K4), Marmie_11 (G1), Mercurio_12 (G4), Miryou_14 (K5), MissDaisy_17 (K4), Mitti_17 (K4), Mowgli_11 (G1), OctaviousRex_11 (G1), OkiRoe_14 (K5), Olga_11 (G1), OmniCritical_17 (K4), Pace1224_11 (G2), Paito_11 (G1), Paola_14 (K5), Patt_17 (K4), Peeb_11 (G1), Periodt_11 (G1), Phish_11 (G1), Phreak_11 (G1), PinkYoshi_11 (G1), Pinnie_12 (G3), Plagueis_11 (G1), Psycho_14 (K5), Rabbs_11 (G1), Rando14_14 (K5), Remy19_11 (G1), Renaissance_11 (G1), Reptar3000_17 (K4), Ruthiejr_16 (K4), SamScheppers_15 (K4), Schiebel_11 (G1), ShaboiShabazz_11 (G1), Sizemore_11 (G1), Slarp_17 (K4), Sneeze_11 (G1), SoSeph_14 (K5), Stargaze_11 (G5), Sweets_11 (G1), Taheera_11 (G1), Taquito_15 (K4), Terror_11 (G1), Thyatira_14 (K5), TinaBug_11 (G1), TomBrady_11 (G1), ViviJ_13 (K5), Waterfoul_14 (K5), Wendigo_11 (G1), Wintermute_17 (K4), Y10_17 (K4), Y2_17 (K4), ZoMa_11 (G1), Zombie_11 (G1),

Start 11:

- Found in 1 of 282 (0.4%) of genes in pham
- Manual Annotations of this start: 1 of 254
- Called 100.0% of time when present
- Phage (with cluster) where this start called: Omnicron_14 (K5),

Start 12:

- Found in 59 of 282 (20.9%) of genes in pham
- Manual Annotations of this start: 2 of 254
- Called 5.1% of time when present
- Phage (with cluster) where this start called: TM4_12 (K2), TingHuaYa_16 (K1), ZoeJ_12 (K2),

Start 15:

- Found in 81 of 282 (28.7%) of genes in pham
- Manual Annotations of this start: 1 of 254
- Called 1.2% of time when present
- Phage (with cluster) where this start called: AlleyCat_14 (K5),

Start 18:

- Found in 24 of 282 (8.5%) of genes in pham
- Manual Annotations of this start: 1 of 254
- Called 8.3% of time when present
- Phage (with cluster) where this start called: Leston_14 (K5), Neighly_14 (K3),

Summary by clusters:

There are 13 clusters represented in this pham: G5, G4, G3, G2, G1, K3, K2, K1, K7, K6, K5, K4, K8,

Info for manual annotations of cluster G1:

- Start number 10 was manually annotated 60 times for cluster G1.

Info for manual annotations of cluster G2:

- Start number 10 was manually annotated 3 times for cluster G2.

Info for manual annotations of cluster G3:

- Start number 10 was manually annotated 2 times for cluster G3.

Info for manual annotations of cluster G4:

- Start number 10 was manually annotated 2 times for cluster G4.

Info for manual annotations of cluster G5:

- Start number 10 was manually annotated 1 time for cluster G5.

Info for manual annotations of cluster K1:

- Start number 8 was manually annotated 103 times for cluster K1.

Info for manual annotations of cluster K2:

- Start number 8 was manually annotated 8 times for cluster K2.
- Start number 12 was manually annotated 2 times for cluster K2.

Info for manual annotations of cluster K3:

- Start number 8 was manually annotated 8 times for cluster K3.

Info for manual annotations of cluster K4:

- Start number 10 was manually annotated 19 times for cluster K4.

Info for manual annotations of cluster K5:

- Start number 10 was manually annotated 19 times for cluster K5.
- Start number 11 was manually annotated 1 time for cluster K5.
- Start number 15 was manually annotated 1 time for cluster K5.
- Start number 18 was manually annotated 1 time for cluster K5.

Info for manual annotations of cluster K6:

- Start number 8 was manually annotated 22 times for cluster K6.

Info for manual annotations of cluster K7:

- Start number 10 was manually annotated 1 time for cluster K7.

Info for manual annotations of cluster K8:

- Start number 10 was manually annotated 1 time for cluster K8.

Gene Information:

Gene: ActinUp_16 Start: 9701, Stop: 9982, Start Num: 8

Candidate Starts for ActinUp_16:

(Start: 8 @9701 has 141 MA's), (26, 9857), (30, 9869), (32, 9887), (34, 9899), (39, 9950), (41, 9956),

Gene: Adephagia_16 Start: 9701, Stop: 9982, Start Num: 8

Candidate Starts for Adephagia_16:

(Start: 8 @9701 has 141 MA's), (26, 9857), (30, 9869), (32, 9887), (34, 9899), (39, 9950), (41, 9956),

Gene: Adonis_16 Start: 9710, Stop: 9991, Start Num: 8

Candidate Starts for Adonis_16:

(Start: 8 @9710 has 141 MA's), (26, 9866), (30, 9878), (32, 9896), (34, 9908), (39, 9959),

Gene: Agent47_14 Start: 9895, Stop: 10161, Start Num: 10

Candidate Starts for Agent47_14:

(Start: 8 @9889 has 141 MA's), (Start: 10 @9895 has 108 MA's), (Start: 15 @9952 has 1 MA's), (Start: 18 @9961 has 1 MA's), (29, 10039), (34, 10072), (39, 10126),

Gene: Ageofdapage_16 Start: 9631, Stop: 9912, Start Num: 8

Candidate Starts for Ageofdapage_16:

(Start: 8 @9631 has 141 MA's), (26, 9787), (30, 9799), (32, 9817), (39, 9880), (41, 9886),

Gene: AlishaPH_16 Start: 9700, Stop: 9981, Start Num: 8

Candidate Starts for AlishaPH_16:

(Start: 8 @9700 has 141 MA's), (26, 9856), (30, 9868), (32, 9886), (34, 9898), (39, 9949), (41, 9955),

Gene: AlleyCat_14 Start: 9830, Stop: 10039, Start Num: 15

Candidate Starts for AlleyCat_14:

(Start: 8 @9767 has 141 MA's), (Start: 10 @9773 has 108 MA's), (Start: 15 @9830 has 1 MA's), (Start: 18 @9839 has 1 MA's), (29, 9917), (34, 9950), (39, 10004),

Gene: Amelie_12 Start: 8985, Stop: 9266, Start Num: 8

Candidate Starts for Amelie_12:

(Start: 8 @8985 has 141 MA's), (26, 9141), (32, 9171), (33, 9177), (34, 9183), (35, 9204), (39, 9234), (41, 9240), (43, 9252),

Gene: Amgine_14 Start: 9375, Stop: 9647, Start Num: 8

Candidate Starts for Amgine_14:

(1, 9237), (Start: 8 @9375 has 141 MA's), (29, 9525), (32, 9546), (33, 9552), (34, 9558), (39, 9612),

Gene: Aminay_14 Start: 9594, Stop: 9851, Start Num: 10

Candidate Starts for Aminay_14:

(Start: 10 @9594 has 108 MA's), (Start: 15 @9651 has 1 MA's), (19, 9672), (29, 9738), (34, 9771), (37, 9807),

Gene: Amohnition_15 Start: 9687, Stop: 9968, Start Num: 8

Candidate Starts for Amohnition_15:

(Start: 8 @9687 has 141 MA's), (Start: 12 @9708 has 2 MA's), (Start: 15 @9750 has 1 MA's), (25, 9804), (32, 9858), (39, 9924),

Gene: Anaya_17 Start: 9702, Stop: 9983, Start Num: 8

Candidate Starts for Anaya_17:

(Start: 8 @9702 has 141 MA's), (26, 9858), (30, 9870), (32, 9888), (39, 9951), (41, 9957),

Gene: Angel_11 Start: 9154, Stop: 9417, Start Num: 10

Candidate Starts for Angel_11:

(Start: 10 @9154 has 108 MA's), (35, 9355), (42, 9400),

Gene: Angelica_16 Start: 9672, Stop: 9953, Start Num: 8

Candidate Starts for Angelica_16:

(Start: 8 @9672 has 141 MA's), (26, 9828), (30, 9840), (32, 9858), (34, 9870), (39, 9921),

Gene: Annihilator_11 Start: 9154, Stop: 9417, Start Num: 10

Candidate Starts for Annihilator_11:

(Start: 10 @9154 has 108 MA's), (35, 9355), (42, 9400),

Gene: Antsirabe_11 Start: 9451, Stop: 9744, Start Num: 10

Candidate Starts for Antsirabe_11:

(6, 9385), (Start: 10 @9451 has 108 MA's), (23, 9562), (30, 9634), (39, 9715),

Gene: Apocalypse_16 Start: 9676, Stop: 9957, Start Num: 8

Candidate Starts for Apocalypse_16:

(Start: 8 @9676 has 141 MA's), (26, 9832), (30, 9844), (32, 9862), (34, 9874), (39, 9925), (41, 9931),

Gene: Applecrisp_14 Start: 9776, Stop: 10048, Start Num: 8

Candidate Starts for Applecrisp_14:

(1, 9638), (Start: 8 @9776 has 141 MA's), (29, 9926), (32, 9947), (33, 9953), (34, 9959), (39, 10013),

Gene: Aroostook_11 Start: 9154, Stop: 9417, Start Num: 10

Candidate Starts for Aroostook_11:

(Start: 10 @9154 has 108 MA's), (35, 9355), (42, 9400),

Gene: Asayake_16 Start: 9741, Stop: 10022, Start Num: 8

Candidate Starts for Asayake_16:

(Start: 8 @9741 has 141 MA's), (26, 9897), (30, 9909), (32, 9927), (34, 9939), (39, 9990),

Gene: Atiba_16 Start: 9664, Stop: 9945, Start Num: 8

Candidate Starts for Atiba_16:

(Start: 8 @9664 has 141 MA's), (26, 9820), (30, 9832), (32, 9850), (34, 9862), (39, 9913), (41, 9919),

Gene: Avocado_11 Start: 9291, Stop: 9545, Start Num: 10

Candidate Starts for Avocado_11:

(Start: 10 @9291 has 108 MA's), (24, 9396), (33, 9450),

Gene: Avrafan_11 Start: 9154, Stop: 9417, Start Num: 10

Candidate Starts for Avrafan_11:

(Start: 10 @9154 has 108 MA's), (35, 9355), (42, 9400),

Gene: AzulaCat_11 Start: 9154, Stop: 9417, Start Num: 10

Candidate Starts for AzulaCat_11:

(Start: 10 @9154 has 108 MA's), (35, 9355), (42, 9400),

Gene: BEEST_16 Start: 9741, Stop: 10022, Start Num: 8

Candidate Starts for BEEST_16:

(Start: 8 @9741 has 141 MA's), (26, 9897), (30, 9909), (32, 9927), (34, 9939), (39, 9990),

Gene: BGlluviae_16 Start: 9741, Stop: 10022, Start Num: 8

Candidate Starts for BGlluviae_16:

(Start: 8 @9741 has 141 MA's), (26, 9897), (30, 9909), (32, 9927), (34, 9939), (39, 9990),

Gene: BPs_11 Start: 9154, Stop: 9417, Start Num: 10

Candidate Starts for BPs_11:

(Start: 10 @9154 has 108 MA's), (35, 9355), (42, 9400),

Gene: BQuat_11 Start: 9154, Stop: 9417, Start Num: 10

Candidate Starts for BQuat_11:

(Start: 10 @9154 has 108 MA's), (35, 9355), (42, 9400),

Gene: BaghaKamala_16 Start: 9667, Stop: 9948, Start Num: 8

Candidate Starts for BaghaKamala_16:

(Start: 8 @9667 has 141 MA's), (26, 9823), (30, 9835), (32, 9853), (34, 9865), (39, 9916), (41, 9922),

Gene: Barkley26_11 Start: 9154, Stop: 9417, Start Num: 10

Candidate Starts for Barkley26_11:

(Start: 10 @9154 has 108 MA's), (35, 9355), (42, 9400),

Gene: BarrelRoll_16 Start: 9693, Stop: 9974, Start Num: 8

Candidate Starts for BarrelRoll_16:

(Start: 8 @9693 has 141 MA's), (26, 9849), (30, 9861), (32, 9879), (34, 9891), (39, 9942),

Gene: Beezoo_16 Start: 9721, Stop: 10002, Start Num: 8

Candidate Starts for Beezoo_16:

(Start: 8 @9721 has 141 MA's), (26, 9877), (30, 9889), (32, 9907), (34, 9919), (39, 9970), (41, 9976),

Gene: Bella96_16 Start: 9622, Stop: 9903, Start Num: 8

Candidate Starts for Bella96_16:

(Start: 8 @9622 has 141 MA's), (26, 9778), (30, 9790), (32, 9808), (33, 9814), (36, 9847), (39, 9871), (41, 9877),

Gene: Belladonna_16 Start: 9741, Stop: 10022, Start Num: 8

Candidate Starts for Belladonna_16:

(Start: 8 @9741 has 141 MA's), (26, 9897), (30, 9909), (32, 9927), (34, 9939), (39, 9990),

Gene: Bern_17 Start: 9653, Stop: 9934, Start Num: 8

Candidate Starts for Bern_17:

(Start: 8 @9653 has 141 MA's), (26, 9809), (30, 9821), (32, 9839), (33, 9845), (39, 9902), (41, 9908),

Gene: Biglebops_12 Start: 8985, Stop: 9266, Start Num: 8

Candidate Starts for Biglebops_12:

(Start: 8 @8985 has 141 MA's), (26, 9141), (32, 9171), (33, 9177), (34, 9183), (35, 9204), (39, 9234), (41, 9240), (43, 9252),

Gene: Blizzard_16 Start: 9741, Stop: 10022, Start Num: 8

Candidate Starts for Blizzard_16:

(Start: 8 @9741 has 141 MA's), (26, 9897), (30, 9909), (32, 9927), (34, 9939), (39, 9990),

Gene: Bobquesha_17 Start: 10706, Stop: 10966, Start Num: 10

Candidate Starts for Bobquesha_17:

(Start: 10 @10706 has 108 MA's), (Start: 15 @10763 has 1 MA's), (21, 10796), (34, 10883), (37, 10919), (39, 10937),

Gene: Boiiii_16 Start: 9743, Stop: 10024, Start Num: 8

Candidate Starts for Boiiii_16:

(Start: 8 @9743 has 141 MA's), (26, 9899), (30, 9911), (32, 9929), (34, 9941), (39, 9992),

Gene: Boilgate_13 Start: 9711, Stop: 9971, Start Num: 10

Candidate Starts for Boilgate_13:

(Start: 10 @9711 has 108 MA's), (Start: 15 @9768 has 1 MA's), (34, 9888), (39, 9942),

Gene: BoostSeason_12 Start: 7685, Stop: 7957, Start Num: 8

Candidate Starts for BoostSeason_12:

(Start: 8 @7685 has 141 MA's), (Start: 12 @7706 has 2 MA's), (Start: 15 @7748 has 1 MA's), (24, 7802), (34, 7868), (39, 7922),

Gene: BruceB_11 Start: 9154, Stop: 9417, Start Num: 10

Candidate Starts for BruceB_11:

(Start: 10 @9154 has 108 MA's), (35, 9355), (42, 9400),

Gene: Bryler_15 Start: 8649, Stop: 8936, Start Num: 8

Candidate Starts for Bryler_15:

(Start: 8 @8649 has 141 MA's), (Start: 12 @8670 has 2 MA's), (13, 8691), (14, 8703), (Start: 15 @8712 has 1 MA's), (33, 8847), (34, 8853), (35, 8877), (39, 8907), (41, 8913),

Gene: CLED96_11 Start: 9154, Stop: 9417, Start Num: 10

Candidate Starts for CLED96_11:

(Start: 10 @9154 has 108 MA's), (35, 9355), (42, 9400),

Gene: CREW_16 Start: 9741, Stop: 10022, Start Num: 8

Candidate Starts for CREW_16:

(Start: 8 @9741 has 141 MA's), (26, 9897), (30, 9909), (32, 9927), (34, 9939), (39, 9990),

Gene: Cain_15 Start: 8637, Stop: 8924, Start Num: 8

Candidate Starts for Cain_15:

(Start: 8 @8637 has 141 MA's), (Start: 12 @8658 has 2 MA's), (13, 8679), (14, 8691), (Start: 15 @8700 has 1 MA's), (33, 8835), (34, 8841), (35, 8865), (39, 8895), (41, 8901),

Gene: CallaLilly_16 Start: 9668, Stop: 9949, Start Num: 8

Candidate Starts for CallaLilly_16:

(Start: 8 @9668 has 141 MA's), (26, 9824), (30, 9836), (32, 9854), (34, 9866), (39, 9917), (41, 9923),

Gene: Cambiare_12 Start: 9753, Stop: 10007, Start Num: 10

Candidate Starts for Cambiare_12:

(Start: 10 @9753 has 108 MA's), (24, 9858), (33, 9912),

Gene: Camri_11 Start: 9154, Stop: 9417, Start Num: 10

Candidate Starts for Camri_11:

(Start: 10 @9154 has 108 MA's), (35, 9355), (42, 9400),

Gene: Capricorn_16 Start: 9741, Stop: 10022, Start Num: 8

Candidate Starts for Capricorn_16:

(Start: 8 @9741 has 141 MA's), (26, 9897), (30, 9909), (32, 9927), (34, 9939), (39, 9990),

Gene: CaseJules_16 Start: 9741, Stop: 10022, Start Num: 8

Candidate Starts for CaseJules_16:

(Start: 8 @9741 has 141 MA's), (26, 9897), (30, 9909), (32, 9927), (34, 9939), (39, 9990),

Gene: CassieYates_11 Start: 9154, Stop: 9417, Start Num: 10

Candidate Starts for CassieYates_11:

(Start: 10 @9154 has 108 MA's), (35, 9355), (42, 9400),

Gene: Cedasite_11 Start: 9154, Stop: 9417, Start Num: 10

Candidate Starts for Cedasite_11:

(Start: 10 @9154 has 108 MA's), (35, 9355), (42, 9400),

Gene: Chance64_11 Start: 9154, Stop: 9417, Start Num: 10

Candidate Starts for Chance64_11:

(Start: 10 @9154 has 108 MA's), (35, 9355), (42, 9400),

Gene: Chancellor_17 Start: 10964, Stop: 11224, Start Num: 10

Candidate Starts for Chancellor_17:

(Start: 10 @10964 has 108 MA's), (Start: 15 @11021 has 1 MA's), (21, 11054), (34, 11141), (37, 11177), (39, 11195),

Gene: Chavito_16 Start: 8775, Stop: 9065, Start Num: 8

Candidate Starts for Chavito_16:

(Start: 8 @8775 has 141 MA's), (Start: 12 @8796 has 2 MA's), (Start: 15 @8838 has 1 MA's), (30, 8949), (32, 8967), (33, 8973), (34, 8979), (39, 9033), (41, 9039),

Gene: CheetoDust_16 Start: 9718, Stop: 9999, Start Num: 8

Candidate Starts for CheetoDust_16:

(Start: 8 @9718 has 141 MA's), (26, 9874), (30, 9886), (32, 9904), (34, 9916), (39, 9967), (41, 9973),

Gene: Cheetobro_17 Start: 10964, Stop: 11224, Start Num: 10

Candidate Starts for Cheetobro_17:

(Start: 10 @10964 has 108 MA's), (Start: 15 @11021 has 1 MA's), (21, 11054), (34, 11141), (37, 11177), (39, 11195),

Gene: Cherrybomb426_11 Start: 9154, Stop: 9417, Start Num: 10

Candidate Starts for Cherrybomb426_11:

(Start: 10 @9154 has 108 MA's), (35, 9355), (42, 9400),

Gene: Chris_15 Start: 8632, Stop: 8922, Start Num: 8

Candidate Starts for Chris_15:

(Start: 8 @8632 has 141 MA's), (Start: 12 @8653 has 2 MA's), (Start: 15 @8695 has 1 MA's), (26, 8794), (27, 8797), (34, 8836), (39, 8890), (41, 8896),

Gene: Clipper_17 Start: 9718, Stop: 9999, Start Num: 8

Candidate Starts for Clipper_17:

(Start: 8 @9718 has 141 MA's), (26, 9874), (30, 9886), (32, 9904), (34, 9916), (39, 9967), (41, 9973),

Gene: Coleslaw_11 Start: 9154, Stop: 9417, Start Num: 10

Candidate Starts for Coleslaw_11:

(Start: 10 @9154 has 108 MA's), (35, 9355), (42, 9400),

Gene: Collard_14 Start: 9856, Stop: 10122, Start Num: 10

Candidate Starts for Collard_14:

(Start: 8 @9850 has 141 MA's), (Start: 10 @9856 has 108 MA's), (Start: 15 @9913 has 1 MA's), (Start: 18 @9922 has 1 MA's), (29, 10000), (34, 10033), (39, 10087),

Gene: Crespo_11 Start: 9155, Stop: 9418, Start Num: 10

Candidate Starts for Crespo_11:

(Start: 10 @9155 has 108 MA's), (35, 9356), (42, 9401),

Gene: CrimD_16 Start: 9670, Stop: 9951, Start Num: 8

Candidate Starts for CrimD_16:

(Start: 8 @9670 has 141 MA's), (26, 9826), (30, 9838), (32, 9856), (33, 9862), (34, 9868), (39, 9919), (41, 9925),

Gene: Curiosium_17 Start: 9143, Stop: 9433, Start Num: 8

Candidate Starts for Curiosium_17:

(4, 9047), (Start: 8 @9143 has 141 MA's), (Start: 12 @9164 has 2 MA's), (14, 9197), (27, 9308), (33, 9341), (34, 9347), (38, 9389), (39, 9401), (41, 9407),

Gene: DMoney_11 Start: 9154, Stop: 9417, Start Num: 10

Candidate Starts for DMoney_11:

(Start: 10 @9154 has 108 MA's), (35, 9355), (42, 9400),

Gene: DNAIII_0011 Start: 9163, Stop: 9426, Start Num: 10

Candidate Starts for DNAIII_0011:

(Start: 10 @9163 has 108 MA's), (35, 9364), (42, 9409),

Gene: Dadosky_14 Start: 9774, Stop: 10040, Start Num: 10

Candidate Starts for Dadosky_14:

(Start: 8 @9768 has 141 MA's), (Start: 10 @9774 has 108 MA's), (Start: 15 @9831 has 1 MA's), (Start: 18 @9840 has 1 MA's), (29, 9918), (34, 9951), (39, 10005),

Gene: Dalmuri_16 Start: 9741, Stop: 10022, Start Num: 8

Candidate Starts for Dalmuri_16:

(Start: 8 @9741 has 141 MA's), (26, 9897), (30, 9909), (32, 9927), (34, 9939), (39, 9990),

Gene: Darionha_11 Start: 9154, Stop: 9417, Start Num: 10

Candidate Starts for Darionha_11:

(Start: 10 @9154 has 108 MA's), (35, 9355), (42, 9400),

Gene: DarthP_15 Start: 9687, Stop: 9968, Start Num: 8

Candidate Starts for DarthP_15:

(Start: 8 @9687 has 141 MA's), (Start: 12 @9708 has 2 MA's), (Start: 15 @9750 has 1 MA's), (25, 9804), (32, 9858), (39, 9924),

Gene: Dartin_16 Start: 8769, Stop: 9059, Start Num: 8

Candidate Starts for Dartin_16:

(Start: 8 @8769 has 141 MA's), (Start: 12 @8790 has 2 MA's), (Start: 15 @8832 has 1 MA's), (30, 8943), (32, 8961), (33, 8967), (34, 8973), (39, 9027), (41, 9033),

Gene: Deby_16 Start: 9672, Stop: 9953, Start Num: 8

Candidate Starts for Deby_16:

(Start: 8 @9672 has 141 MA's), (26, 9828), (30, 9840), (32, 9858), (34, 9870), (39, 9921),

Gene: Devera_16 Start: 9689, Stop: 9970, Start Num: 8

Candidate Starts for Devera_16:

(Start: 8 @9689 has 141 MA's), (26, 9845), (30, 9857), (32, 9875), (39, 9938), (41, 9944),

Gene: DismalFunk_12 Start: 7693, Stop: 7965, Start Num: 8

Candidate Starts for DismalFunk_12:

(Start: 8 @7693 has 141 MA's), (Start: 12 @7714 has 2 MA's), (Start: 15 @7756 has 1 MA's), (34, 7876), (39, 7930),

Gene: DismalStressor_12 Start: 7693, Stop: 7965, Start Num: 8

Candidate Starts for DismalStressor_12:

(Start: 8 @7693 has 141 MA's), (Start: 12 @7714 has 2 MA's), (Start: 15 @7756 has 1 MA's), (34, 7876), (39, 7930),

Gene: Dole_16 Start: 9691, Stop: 9972, Start Num: 8

Candidate Starts for Dole_16:

(Start: 8 @9691 has 141 MA's), (26, 9847), (30, 9859), (32, 9877), (39, 9940), (41, 9946),

Gene: Doughnut_12 Start: 7679, Stop: 7951, Start Num: 8

Candidate Starts for Doughnut_12:

(Start: 8 @7679 has 141 MA's), (Start: 12 @7700 has 2 MA's), (Start: 15 @7742 has 1 MA's), (24, 7796), (34, 7862), (39, 7916),

Gene: DrHayes_16 Start: 9643, Stop: 9924, Start Num: 8

Candidate Starts for DrHayes_16:

(Start: 8 @9643 has 141 MA's), (26, 9799), (30, 9811), (32, 9829), (33, 9835), (39, 9892), (41, 9898),

Gene: Durfee_16 Start: 9741, Stop: 10022, Start Num: 8

Candidate Starts for Durfee_16:

(Start: 8 @9741 has 141 MA's), (26, 9897), (30, 9909), (32, 9927), (34, 9939), (39, 9990),

Gene: ECartman_11 Start: 9154, Stop: 9417, Start Num: 10

Candidate Starts for ECartman_11:

(Start: 10 @9154 has 108 MA's), (35, 9355), (42, 9400),

Gene: Edugator_13 Start: 9774, Stop: 10040, Start Num: 10

Candidate Starts for Edugator_13:

(Start: 8 @9768 has 141 MA's), (Start: 10 @9774 has 108 MA's), (Start: 15 @9831 has 1 MA's), (Start: 18 @9840 has 1 MA's), (29, 9918), (34, 9951), (39, 10005),

Gene: Efra2_16 Start: 8635, Stop: 8925, Start Num: 8

Candidate Starts for Efra2_16:

(2, 8491), (3, 8533), (Start: 8 @8635 has 141 MA's), (Start: 12 @8656 has 2 MA's), (14, 8689), (27, 8800), (28, 8803), (33, 8833), (34, 8839), (38, 8881), (39, 8893), (41, 8899), (43, 8911),

Gene: Ekdilam_13 Start: 9408, Stop: 9686, Start Num: 8

Candidate Starts for Ekdilam_13:

(Start: 8 @9408 has 141 MA's), (Start: 15 @9471 has 1 MA's), (32, 9579), (39, 9645),

Gene: Ellie_13 Start: 9449, Stop: 9721, Start Num: 8

Candidate Starts for Ellie_13:

(Start: 8 @9449 has 141 MA's), (29, 9599), (32, 9620), (33, 9626), (34, 9632), (39, 9686),

Gene: Emerson_16 Start: 9701, Stop: 9982, Start Num: 8

Candidate Starts for Emerson_16:

(Start: 8 @9701 has 141 MA's), (26, 9857), (30, 9869), (32, 9887), (34, 9899), (39, 9950), (41, 9956),

Gene: Enkosi_12 Start: 8985, Stop: 9266, Start Num: 8

Candidate Starts for Enkosi_12:

(Start: 8 @8985 has 141 MA's), (26, 9141), (32, 9171), (33, 9177), (34, 9183), (35, 9204), (39, 9234), (41, 9240), (43, 9252),

Gene: Eponine_17 Start: 10828, Stop: 11088, Start Num: 10

Candidate Starts for Eponine_17:

(Start: 10 @10828 has 108 MA's), (Start: 15 @10885 has 1 MA's), (34, 11005), (37, 11041), (39, 11059),

Gene: Fefferhead_15 Start: 9616, Stop: 9888, Start Num: 8

Candidate Starts for Fefferhead_15:

(1, 9478), (Start: 8 @9616 has 141 MA's), (29, 9766), (32, 9787), (33, 9793), (34, 9799), (39, 9853),

Gene: Feyre_14 Start: 9722, Stop: 9988, Start Num: 10

Candidate Starts for Feyre_14:

(Start: 10 @9722 has 108 MA's), (Start: 18 @9788 has 1 MA's), (29, 9866), (34, 9899), (39, 9953),

Gene: Findley_12 Start: 7693, Stop: 7965, Start Num: 8

Candidate Starts for Findley_12:

(Start: 8 @7693 has 141 MA's), (Start: 12 @7714 has 2 MA's), (Start: 15 @7756 has 1 MA's), (34, 7876), (39, 7930),

Gene: Fionnbharth_17 Start: 10954, Stop: 11214, Start Num: 10

Candidate Starts for Fionnbharth_17:

(9, 10951), (Start: 10 @10954 has 108 MA's), (Start: 15 @11011 has 1 MA's), (21, 11044), (34, 11131), (37, 11167), (39, 11185),

Gene: FlagStaff_11 Start: 9223, Stop: 9477, Start Num: 10

Candidate Starts for FlagStaff_11:

(Start: 10 @9223 has 108 MA's), (24, 9328), (33, 9382), (34, 9388), (39, 9442), (44, 9472),

Gene: Frosty24_11 Start: 9154, Stop: 9417, Start Num: 10

Candidate Starts for Frosty24_11:

(Start: 10 @9154 has 108 MA's), (35, 9355), (42, 9400),

Gene: Ganymede_16 Start: 9718, Stop: 9999, Start Num: 8

Candidate Starts for Ganymede_16:

(Start: 8 @9718 has 141 MA's), (26, 9874), (30, 9886), (32, 9904), (34, 9916), (39, 9967),

Gene: Gengar_14 Start: 9829, Stop: 10095, Start Num: 10

Candidate Starts for Gengar_14:

(Start: 10 @9829 has 108 MA's), (Start: 18 @9895 has 1 MA's), (29, 9973), (34, 10006), (39, 10060),

Gene: Geraldini_16 Start: 9721, Stop: 10002, Start Num: 8

Candidate Starts for Geraldini_16:

(Start: 8 @9721 has 141 MA's), (26, 9877), (30, 9889), (32, 9907), (34, 9919), (39, 9970), (41, 9976),

Gene: Gideon_11 Start: 9154, Stop: 9417, Start Num: 10

Candidate Starts for Gideon_11:

(Start: 10 @9154 has 108 MA's), (35, 9355), (42, 9400),

Gene: GoldenAsh_11 Start: 9154, Stop: 9417, Start Num: 10

Candidate Starts for GoldenAsh_11:

(Start: 10 @9154 has 108 MA's), (35, 9355), (42, 9400),

Gene: Gomashi_11 Start: 9155, Stop: 9418, Start Num: 10

Candidate Starts for Gomashi_11:

(Start: 10 @9155 has 108 MA's), (35, 9356), (42, 9401),

Gene: Grizzly_11 Start: 9154, Stop: 9417, Start Num: 10

Candidate Starts for Grizzly_11:

(Start: 10 @9154 has 108 MA's), (35, 9355), (42, 9400),

Gene: Guanica15_16 Start: 8651, Stop: 8941, Start Num: 8

Candidate Starts for Guanica15_16:

(2, 8507), (3, 8549), (Start: 8 @8651 has 141 MA's), (Start: 12 @8672 has 2 MA's), (14, 8705), (27, 8816), (28, 8819), (33, 8849), (34, 8855), (38, 8897), (39, 8909), (41, 8915), (43, 8927),

Gene: Guillsminger_14 Start: 9804, Stop: 10070, Start Num: 10

Candidate Starts for Guillsminger_14:

(Start: 10 @9804 has 108 MA's), (Start: 18 @9870 has 1 MA's), (29, 9948), (34, 9981), (39, 10035),

Gene: Halo_11 Start: 9149, Stop: 9412, Start Num: 10

Candidate Starts for Halo_11:

(Start: 10 @9149 has 108 MA's), (Start: 15 @9206 has 1 MA's), (35, 9350), (42, 9395),

Gene: Hammy_15 Start: 9681, Stop: 9962, Start Num: 8

Candidate Starts for Hammy_15:

(Start: 8 @9681 has 141 MA's), (Start: 12 @9702 has 2 MA's), (Start: 15 @9744 has 1 MA's), (25, 9798), (32, 9852), (39, 9918),

Gene: HedwigODU_16 Start: 9701, Stop: 9982, Start Num: 8

Candidate Starts for HedwigODU_16:

(Start: 8 @9701 has 141 MA's), (26, 9857), (30, 9869), (32, 9887), (34, 9899), (39, 9950), (41, 9956),

Gene: Heftyboy_14 Start: 9931, Stop: 10197, Start Num: 10

Candidate Starts for Heftyboy_14:

(Start: 10 @9931 has 108 MA's), (Start: 18 @9997 has 1 MA's), (29, 10075), (39, 10162),

Gene: Homura_16 Start: 9741, Stop: 10022, Start Num: 8

Candidate Starts for Homura_16:

(Start: 8 @9741 has 141 MA's), (26, 9897), (30, 9909), (32, 9927), (34, 9939), (39, 9990),

Gene: Hope_11 Start: 9154, Stop: 9417, Start Num: 10

Candidate Starts for Hope_11:
(Start: 10 @9154 has 108 MA's), (35, 9355), (42, 9400),

Gene: Hotshotbaby7_11 Start: 9154, Stop: 9417, Start Num: 10
Candidate Starts for Hotshotbaby7_11:
(Start: 10 @9154 has 108 MA's), (35, 9355), (42, 9400),

Gene: Hurricane_15 Start: 9717, Stop: 10001, Start Num: 8
Candidate Starts for Hurricane_15:
(Start: 8 @9717 has 141 MA's), (Start: 12 @9738 has 2 MA's), (32, 9888), (39, 9954),

Gene: Hyperbowlee_16 Start: 9741, Stop: 10022, Start Num: 8
Candidate Starts for Hyperbowlee_16:
(Start: 8 @9741 has 141 MA's), (26, 9897), (30, 9909), (32, 9927), (34, 9939), (39, 9990),

Gene: Illumine_16 Start: 9691, Stop: 9972, Start Num: 8
Candidate Starts for Illumine_16:
(Start: 8 @9691 has 141 MA's), (26, 9847), (30, 9859), (32, 9877), (39, 9940), (41, 9946),

Gene: Inky_16 Start: 9741, Stop: 10022, Start Num: 8
Candidate Starts for Inky_16:
(Start: 8 @9741 has 141 MA's), (26, 9897), (30, 9909), (32, 9927), (34, 9939), (39, 9990),

Gene: InvictusManeo_14 Start: 9899, Stop: 10165, Start Num: 10
Candidate Starts for InvictusManeo_14:
(Start: 8 @9893 has 141 MA's), (Start: 10 @9899 has 108 MA's), (Start: 15 @9956 has 1 MA's), (Start: 18 @9965 has 1 MA's), (29, 10043), (34, 10076), (39, 10130),

Gene: JAWS_16 Start: 9695, Stop: 9976, Start Num: 8
Candidate Starts for JAWS_16:
(Start: 8 @9695 has 141 MA's), (26, 9851), (30, 9863), (32, 9881), (34, 9893), (39, 9944),

Gene: JF1_17 Start: 10953, Stop: 11213, Start Num: 10
Candidate Starts for JF1_17:
(Start: 10 @10953 has 108 MA's), (Start: 15 @11010 has 1 MA's), (21, 11043), (34, 11130), (37, 11166), (39, 11184),

Gene: Jane_11 Start: 9154, Stop: 9417, Start Num: 10
Candidate Starts for Jane_11:
(Start: 10 @9154 has 108 MA's), (35, 9355), (42, 9400),

Gene: Jarvi_16 Start: 9741, Stop: 10022, Start Num: 8
Candidate Starts for Jarvi_16:
(Start: 8 @9741 has 141 MA's), (26, 9897), (30, 9909), (32, 9927), (34, 9939), (39, 9990),

Gene: Jayhawk_16 Start: 9702, Stop: 9983, Start Num: 8
Candidate Starts for Jayhawk_16:
(Start: 8 @9702 has 141 MA's), (26, 9858), (30, 9870), (32, 9888), (34, 9900), (39, 9951), (41, 9957),

Gene: Jeckyll_16 Start: 9741, Stop: 10022, Start Num: 8
Candidate Starts for Jeckyll_16:
(Start: 8 @9741 has 141 MA's), (26, 9897), (30, 9909), (32, 9927), (34, 9939), (39, 9990),

Gene: Jolene_11 Start: 9154, Stop: 9417, Start Num: 10
Candidate Starts for Jolene_11:
(Start: 10 @9154 has 108 MA's), (35, 9355), (42, 9400),

Gene: Jolie2_11 Start: 8394, Stop: 8687, Start Num: 10
Candidate Starts for Jolie2_11:
(Start: 10 @8394 has 108 MA's), (20, 8490), (30, 8577), (40, 8661), (42, 8673),

Gene: Jonghyun_11 Start: 9154, Stop: 9417, Start Num: 10
Candidate Starts for Jonghyun_11:
(Start: 10 @9154 has 108 MA's), (35, 9355), (42, 9400),

Gene: JorRay_11 Start: 9154, Stop: 9417, Start Num: 10
Candidate Starts for JorRay_11:
(Start: 10 @9154 has 108 MA's), (35, 9355), (42, 9400),

Gene: Joy99_16 Start: 9667, Stop: 9948, Start Num: 8
Candidate Starts for Joy99_16:
(Start: 8 @9667 has 141 MA's), (26, 9823), (30, 9835), (32, 9853), (34, 9865), (39, 9916), (41, 9922),

Gene: Juliette_17 Start: 10828, Stop: 11088, Start Num: 10
Candidate Starts for Juliette_17:
(Start: 10 @10828 has 108 MA's), (Start: 15 @10885 has 1 MA's), (34, 11005), (37, 11041), (39, 11059),

Gene: Kareem_11 Start: 9154, Stop: 9417, Start Num: 10
Candidate Starts for Kareem_11:
(Start: 10 @9154 has 108 MA's), (35, 9355), (42, 9400),

Gene: Kasen3_11 Start: 9155, Stop: 9418, Start Num: 10
Candidate Starts for Kasen3_11:
(Start: 10 @9155 has 108 MA's), (35, 9356), (42, 9401),

Gene: Keshu_15 Start: 9704, Stop: 9988, Start Num: 8
Candidate Starts for Keshu_15:
(Start: 8 @9704 has 141 MA's), (Start: 12 @9725 has 2 MA's), (32, 9875), (39, 9941),

Gene: KiSi_15 Start: 8570, Stop: 8860, Start Num: 8
Candidate Starts for KiSi_15:
(Start: 8 @8570 has 141 MA's), (Start: 12 @8591 has 2 MA's), (26, 8732), (27, 8735), (34, 8774), (39, 8828), (41, 8834),

Gene: Kratio_13 Start: 9526, Stop: 9792, Start Num: 10
Candidate Starts for Kratio_13:
(Start: 8 @9520 has 141 MA's), (Start: 10 @9526 has 108 MA's), (Start: 15 @9583 has 1 MA's), (Start: 18 @9592 has 1 MA's), (29, 9670), (34, 9703), (39, 9757),

Gene: Kraw_17 Start: 10873, Stop: 11133, Start Num: 10
Candidate Starts for Kraw_17:
(Start: 10 @10873 has 108 MA's), (Start: 15 @10930 has 1 MA's), (21, 10963), (34, 11050), (37, 11086), (39, 11104),

Gene: Krueger_15 Start: 8627, Stop: 8914, Start Num: 8

Candidate Starts for Krueger_15:

(Start: 8 @8627 has 141 MA's), (Start: 12 @8648 has 2 MA's), (13, 8669), (14, 8681), (Start: 15 @8690 has 1 MA's), (32, 8819), (33, 8825), (34, 8831), (39, 8885), (41, 8891),

Gene: Larva_14 Start: 9641, Stop: 9907, Start Num: 10

Candidate Starts for Larva_14:

(Start: 8 @9635 has 141 MA's), (Start: 10 @9641 has 108 MA's), (Start: 15 @9698 has 1 MA's), (Start: 18 @9707 has 1 MA's), (29, 9785), (34, 9818), (39, 9872),

Gene: LastHope_16 Start: 8723, Stop: 9013, Start Num: 8

Candidate Starts for LastHope_16:

(Start: 8 @8723 has 141 MA's), (Start: 12 @8744 has 2 MA's), (14, 8777), (17, 8792), (27, 8888), (33, 8921), (34, 8927), (39, 8981), (41, 8987),

Gene: LaterM_16 Start: 9659, Stop: 9940, Start Num: 8

Candidate Starts for LaterM_16:

(Start: 8 @9659 has 141 MA's), (26, 9815), (30, 9827), (32, 9845), (39, 9908), (41, 9914),

Gene: LeMond_15 Start: 8642, Stop: 8932, Start Num: 8

Candidate Starts for LeMond_15:

(Start: 8 @8642 has 141 MA's), (Start: 12 @8663 has 2 MA's), (26, 8804), (27, 8807), (34, 8846), (39, 8900), (41, 8906),

Gene: Lea83_16 Start: 9704, Stop: 9988, Start Num: 8

Candidate Starts for Lea83_16:

(Start: 8 @9704 has 141 MA's), (Start: 12 @9725 has 2 MA's), (Start: 15 @9767 has 1 MA's), (32, 9875), (39, 9941),

Gene: Lebo14_17 Start: 10967, Stop: 11227, Start Num: 10

Candidate Starts for Lebo14_17:

(Start: 10 @10967 has 108 MA's), (Start: 15 @11024 has 1 MA's), (21, 11057), (34, 11144), (37, 11180), (39, 11198),

Gene: Lemuria_11 Start: 8447, Stop: 8740, Start Num: 10

Candidate Starts for Lemuria_11:

(Start: 10 @8447 has 108 MA's), (30, 8630), (40, 8714), (42, 8726),

Gene: Leston_14 Start: 10000, Stop: 10200, Start Num: 18

Candidate Starts for Leston_14:

(Start: 10 @9934 has 108 MA's), (Start: 18 @10000 has 1 MA's), (29, 10078), (34, 10111), (39, 10165),

Gene: Liefie_11 Start: 9153, Stop: 9416, Start Num: 10

Candidate Starts for Liefie_11:

(Start: 10 @9153 has 108 MA's), (35, 9354), (42, 9399),

Gene: LilPharaoh_12 Start: 8985, Stop: 9266, Start Num: 8

Candidate Starts for LilPharaoh_12:

(Start: 8 @8985 has 141 MA's), (26, 9141), (32, 9171), (33, 9177), (34, 9183), (35, 9204), (39, 9234), (41, 9240), (43, 9252),

Gene: LindNT_16 Start: 9665, Stop: 9946, Start Num: 8

Candidate Starts for LindNT_16:

(Start: 8 @9665 has 141 MA's), (26, 9821), (30, 9833), (32, 9851), (33, 9857), (34, 9863), (39, 9914), (41, 9920),

Gene: Llorens_16 Start: 9741, Stop: 10022, Start Num: 8

Candidate Starts for Llorens_16:

(Start: 8 @9741 has 141 MA's), (26, 9897), (30, 9909), (32, 9927), (34, 9939), (39, 9990),

Gene: LouisV14_11 Start: 9154, Stop: 9417, Start Num: 10

Candidate Starts for LouisV14_11:

(Start: 10 @9154 has 108 MA's), (35, 9355), (42, 9400),

Gene: Lunahalos_16 Start: 9741, Stop: 10022, Start Num: 8

Candidate Starts for Lunahalos_16:

(Start: 8 @9741 has 141 MA's), (26, 9897), (30, 9909), (32, 9927), (34, 9939), (39, 9990),

Gene: MOOREtheMARYer_11 Start: 9335, Stop: 9628, Start Num: 10

Candidate Starts for MOOREtheMARYer_11:

(Start: 10 @9335 has 108 MA's), (22, 9443),

Gene: MacKat_16 Start: 9718, Stop: 9999, Start Num: 8

Candidate Starts for MacKat_16:

(Start: 8 @9718 has 141 MA's), (26, 9874), (30, 9886), (32, 9904), (34, 9916), (39, 9967), (41, 9973),

Gene: MacnCheese_16 Start: 9932, Stop: 10216, Start Num: 8

Candidate Starts for MacnCheese_16:

(7, 9884), (Start: 8 @9932 has 141 MA's), (Start: 12 @9953 has 2 MA's), (32, 10103), (39, 10169), (44, 10199),

Gene: Maliketh_11 Start: 9154, Stop: 9417, Start Num: 10

Candidate Starts for Maliketh_11:

(Start: 10 @9154 has 108 MA's), (35, 9355), (42, 9400),

Gene: Malthus_17 Start: 10873, Stop: 11133, Start Num: 10

Candidate Starts for Malthus_17:

(Start: 10 @10873 has 108 MA's), (Start: 15 @10930 has 1 MA's), (21, 10963), (34, 11050), (37, 11086), (39, 11104),

Gene: Marcoliusprime_12 Start: 7693, Stop: 7965, Start Num: 8

Candidate Starts for Marcoliusprime_12:

(Start: 8 @7693 has 141 MA's), (Start: 12 @7714 has 2 MA's), (Start: 15 @7756 has 1 MA's), (34, 7876), (39, 7930),

Gene: MarkPhew_16 Start: 8538, Stop: 8828, Start Num: 8

Candidate Starts for MarkPhew_16:

(Start: 8 @8538 has 141 MA's), (Start: 12 @8559 has 2 MA's), (Start: 15 @8601 has 1 MA's), (26, 8700), (27, 8703), (34, 8742), (38, 8784), (39, 8796), (41, 8802),

Gene: Marmie_11 Start: 9154, Stop: 9417, Start Num: 10

Candidate Starts for Marmie_11:

(Start: 10 @9154 has 108 MA's), (35, 9355), (42, 9400),

Gene: Marshawn_17 Start: 9232, Stop: 9522, Start Num: 8

Candidate Starts for Marshawn_17:

(Start: 8 @9232 has 141 MA's), (Start: 12 @9253 has 2 MA's), (32, 9424), (33, 9430), (34, 9436), (39, 9490), (41, 9496), (43, 9508),

Gene: McMater_16 Start: 8769, Stop: 9059, Start Num: 8

Candidate Starts for McMater_16:

(Start: 8 @8769 has 141 MA's), (Start: 12 @8790 has 2 MA's), (Start: 15 @8832 has 1 MA's), (30, 8943), (32, 8961), (33, 8967), (34, 8973), (39, 9027), (41, 9033),

Gene: Mdavu_12 Start: 8973, Stop: 9254, Start Num: 8

Candidate Starts for Mdavu_12:

(Start: 8 @8973 has 141 MA's), (26, 9129), (32, 9159), (33, 9165), (34, 9171), (35, 9192), (39, 9222), (41, 9228), (43, 9240),

Gene: MeaningOfLife_16 Start: 9674, Stop: 9955, Start Num: 8

Candidate Starts for MeaningOfLife_16:

(Start: 8 @9674 has 141 MA's), (26, 9830), (30, 9842), (32, 9860), (34, 9872), (39, 9923), (41, 9929),

Gene: Megsy_16 Start: 9668, Stop: 9949, Start Num: 8

Candidate Starts for Megsy_16:

(Start: 8 @9668 has 141 MA's), (26, 9824), (30, 9836), (32, 9854), (34, 9866), (39, 9917), (41, 9923),

Gene: Mercurio_12 Start: 9090, Stop: 9383, Start Num: 10

Candidate Starts for Mercurio_12:

(Start: 10 @9090 has 108 MA's), (Start: 15 @9159 has 1 MA's), (20, 9186), (34, 9303), (42, 9369),

Gene: Milly_12 Start: 7693, Stop: 7965, Start Num: 8

Candidate Starts for Milly_12:

(Start: 8 @7693 has 141 MA's), (Start: 12 @7714 has 2 MA's), (Start: 15 @7756 has 1 MA's), (34, 7876), (39, 7930),

Gene: Miryou_14 Start: 9782, Stop: 10048, Start Num: 10

Candidate Starts for Miryou_14:

(Start: 10 @9782 has 108 MA's), (Start: 18 @9848 has 1 MA's), (29, 9926), (34, 9959), (39, 10013),

Gene: MissDaisy_17 Start: 10727, Stop: 10987, Start Num: 10

Candidate Starts for MissDaisy_17:

(Start: 10 @10727 has 108 MA's), (Start: 15 @10784 has 1 MA's), (21, 10817), (34, 10904), (37, 10940), (39, 10958),

Gene: Mitti_17 Start: 10877, Stop: 11137, Start Num: 10

Candidate Starts for Mitti_17:

(Start: 10 @10877 has 108 MA's), (Start: 15 @10934 has 1 MA's), (21, 10967), (34, 11054), (37, 11090), (39, 11108),

Gene: Mowgli_11 Start: 9154, Stop: 9417, Start Num: 10

Candidate Starts for Mowgli_11:

(Start: 10 @9154 has 108 MA's), (35, 9355), (42, 9400),

Gene: Mufasa_12 Start: 7679, Stop: 7951, Start Num: 8

Candidate Starts for Mufasa_12:

(Start: 8 @7679 has 141 MA's), (Start: 12 @7700 has 2 MA's), (Start: 15 @7742 has 1 MA's), (24, 7796), (34, 7862), (39, 7916),

Gene: Murucutumbu_16 Start: 9652, Stop: 9933, Start Num: 8
Candidate Starts for Murucutumbu_16:
(Start: 8 @9652 has 141 MA's), (26, 9808), (30, 9820), (32, 9838), (39, 9901), (41, 9907),

Gene: Mynx_16 Start: 9721, Stop: 10002, Start Num: 8
Candidate Starts for Mynx_16:
(Start: 8 @9721 has 141 MA's), (26, 9877), (30, 9889), (32, 9907), (34, 9919), (39, 9970), (41, 9976),

Gene: Neighly_14 Start: 9706, Stop: 9906, Start Num: 18
Candidate Starts for Neighly_14:
(Start: 8 @9634 has 141 MA's), (Start: 10 @9640 has 108 MA's), (Start: 15 @9697 has 1 MA's), (Start: 18 @9706 has 1 MA's), (29, 9784), (34, 9817), (39, 9871),

Gene: Nibb_15 Start: 8679, Stop: 8969, Start Num: 8
Candidate Starts for Nibb_15:
(Start: 8 @8679 has 141 MA's), (Start: 12 @8700 has 2 MA's), (Start: 15 @8742 has 1 MA's), (26, 8841), (27, 8844), (34, 8883), (39, 8937),

Gene: Nikao_12 Start: 8985, Stop: 9266, Start Num: 8
Candidate Starts for Nikao_12:
(Start: 8 @8985 has 141 MA's), (26, 9141), (32, 9171), (33, 9177), (34, 9183), (35, 9204), (39, 9234), (41, 9240), (43, 9252),

Gene: Niklas_16 Start: 8769, Stop: 9059, Start Num: 8
Candidate Starts for Niklas_16:
(Start: 8 @8769 has 141 MA's), (Start: 12 @8790 has 2 MA's), (Start: 15 @8832 has 1 MA's), (30, 8943), (32, 8961), (33, 8967), (34, 8973), (39, 9027), (41, 9033),

Gene: November_14 Start: 9529, Stop: 9810, Start Num: 8
Candidate Starts for November_14:
(5, 9466), (Start: 8 @9529 has 141 MA's), (Start: 15 @9592 has 1 MA's), (25, 9646), (32, 9700), (39, 9766),

Gene: Nutello_12 Start: 8985, Stop: 9266, Start Num: 8
Candidate Starts for Nutello_12:
(Start: 8 @8985 has 141 MA's), (26, 9141), (32, 9171), (33, 9177), (34, 9183), (35, 9204), (39, 9234), (41, 9240), (43, 9252),

Gene: OctaviousRex_11 Start: 9154, Stop: 9417, Start Num: 10
Candidate Starts for OctaviousRex_11:
(Start: 10 @9154 has 108 MA's), (35, 9355), (42, 9400),

Gene: OkiRoe_14 Start: 9804, Stop: 10070, Start Num: 10
Candidate Starts for OkiRoe_14:
(Start: 10 @9804 has 108 MA's), (Start: 18 @9870 has 1 MA's), (29, 9948), (34, 9981), (39, 10035),

Gene: Olga_11 Start: 9154, Stop: 9417, Start Num: 10
Candidate Starts for Olga_11:
(Start: 10 @9154 has 108 MA's), (35, 9355), (42, 9400),

Gene: OmniCritical_17 Start: 10864, Stop: 11124, Start Num: 10
Candidate Starts for OmniCritical_17:

(Start: 10 @10864 has 108 MA's), (Start: 15 @10921 has 1 MA's), (21, 10954), (34, 11041), (37, 11077), (39, 11095),

Gene: Omnicron_14 Start: 8879, Stop: 9136, Start Num: 11

Candidate Starts for Omnicron_14:

(Start: 10 @8870 has 108 MA's), (Start: 11 @8879 has 1 MA's), (Start: 18 @8936 has 1 MA's), (29, 9014), (37, 9083), (39, 9101),

Gene: Oscar_15 Start: 8643, Stop: 8933, Start Num: 8

Candidate Starts for Oscar_15:

(Start: 8 @8643 has 141 MA's), (Start: 12 @8664 has 2 MA's), (26, 8805), (27, 8808), (34, 8847), (39, 8901), (41, 8907),

Gene: Pace1224_11 Start: 9223, Stop: 9477, Start Num: 10

Candidate Starts for Pace1224_11:

(Start: 10 @9223 has 108 MA's), (24, 9328), (33, 9382), (34, 9388), (39, 9442), (44, 9472),

Gene: Padfoot_16 Start: 9741, Stop: 10022, Start Num: 8

Candidate Starts for Padfoot_16:

(Start: 8 @9741 has 141 MA's), (26, 9897), (30, 9909), (32, 9927), (34, 9939), (39, 9990),

Gene: Padpat_16 Start: 9701, Stop: 9982, Start Num: 8

Candidate Starts for Padpat_16:

(Start: 8 @9701 has 141 MA's), (26, 9857), (30, 9869), (32, 9887), (34, 9899), (39, 9950), (41, 9956),

Gene: Paito_11 Start: 9253, Stop: 9516, Start Num: 10

Candidate Starts for Paito_11:

(Start: 10 @9253 has 108 MA's), (35, 9454), (42, 9499),

Gene: Paola_14 Start: 9804, Stop: 10070, Start Num: 10

Candidate Starts for Paola_14:

(Start: 10 @9804 has 108 MA's), (Start: 18 @9870 has 1 MA's), (29, 9948), (34, 9981), (39, 10035),

Gene: Patt_17 Start: 10703, Stop: 10963, Start Num: 10

Candidate Starts for Patt_17:

(Start: 10 @10703 has 108 MA's), (Start: 15 @10760 has 1 MA's), (21, 10793), (34, 10880), (37, 10916), (39, 10934),

Gene: Peanam_16 Start: 8769, Stop: 9059, Start Num: 8

Candidate Starts for Peanam_16:

(Start: 8 @8769 has 141 MA's), (Start: 12 @8790 has 2 MA's), (Start: 15 @8832 has 1 MA's), (30, 8943), (32, 8961), (33, 8967), (34, 8973), (39, 9027), (41, 9033),

Gene: Peeb_11 Start: 9154, Stop: 9417, Start Num: 10

Candidate Starts for Peeb_11:

(Start: 10 @9154 has 108 MA's), (35, 9355), (42, 9400),

Gene: Peel_16 Start: 9741, Stop: 10022, Start Num: 8

Candidate Starts for Peel_16:

(Start: 8 @9741 has 141 MA's), (26, 9897), (30, 9909), (32, 9927), (34, 9939), (39, 9990),

Gene: Periodt_11 Start: 9154, Stop: 9417, Start Num: 10

Candidate Starts for Periodt_11:

(Start: 10 @9154 has 108 MA's), (35, 9355), (42, 9400),

Gene: Pharb_15 Start: 9552, Stop: 9821, Start Num: 8

Candidate Starts for Pharb_15:

(Start: 8 @9552 has 141 MA's), (Start: 12 @9573 has 2 MA's), (39, 9789),

Gene: PhelpsODU_15 Start: 8681, Stop: 8968, Start Num: 8

Candidate Starts for PhelpsODU_15:

(Start: 8 @8681 has 141 MA's), (Start: 12 @8702 has 2 MA's), (13, 8723), (14, 8735), (Start: 15 @8744 has 1 MA's), (32, 8873), (33, 8879), (34, 8885), (35, 8909), (39, 8939), (41, 8945),

Gene: Phish_11 Start: 9154, Stop: 9417, Start Num: 10

Candidate Starts for Phish_11:

(Start: 10 @9154 has 108 MA's), (35, 9355), (42, 9400),

Gene: Phrank_15 Start: 8625, Stop: 8912, Start Num: 8

Candidate Starts for Phrank_15:

(Start: 8 @8625 has 141 MA's), (Start: 12 @8646 has 2 MA's), (13, 8667), (14, 8679), (Start: 15 @8688 has 1 MA's), (33, 8823), (34, 8829), (35, 8853), (39, 8883), (41, 8889),

Gene: Phreak_11 Start: 9154, Stop: 9417, Start Num: 10

Candidate Starts for Phreak_11:

(Start: 10 @9154 has 108 MA's), (35, 9355), (42, 9400),

Gene: Piatt_16 Start: 9741, Stop: 10022, Start Num: 8

Candidate Starts for Piatt_16:

(Start: 8 @9741 has 141 MA's), (26, 9897), (30, 9909), (32, 9927), (34, 9939), (39, 9990),

Gene: PinkYoshi_11 Start: 9154, Stop: 9417, Start Num: 10

Candidate Starts for PinkYoshi_11:

(Start: 10 @9154 has 108 MA's), (35, 9355), (42, 9400),

Gene: Pinnie_12 Start: 9801, Stop: 10094, Start Num: 10

Candidate Starts for Pinnie_12:

(Start: 10 @9801 has 108 MA's), (22, 9909),

Gene: Pixie_15 Start: 9456, Stop: 9740, Start Num: 8

Candidate Starts for Pixie_15:

(Start: 8 @9456 has 141 MA's), (Start: 12 @9477 has 2 MA's), (Start: 15 @9519 has 1 MA's), (32, 9627), (39, 9693),

Gene: Plagueis_11 Start: 9154, Stop: 9417, Start Num: 10

Candidate Starts for Plagueis_11:

(Start: 10 @9154 has 108 MA's), (35, 9355), (42, 9400),

Gene: Pokerus_15 Start: 9655, Stop: 9936, Start Num: 8

Candidate Starts for Pokerus_15:

(Start: 8 @9655 has 141 MA's), (26, 9811), (30, 9823), (32, 9841), (34, 9853), (39, 9904),

Gene: Prithvi_16 Start: 9665, Stop: 9946, Start Num: 8

Candidate Starts for Prithvi_16:

(Start: 8 @9665 has 141 MA's), (26, 9821), (30, 9833), (32, 9851), (33, 9857), (34, 9863), (39, 9914), (41, 9920),

Gene: Psycho_14 Start: 9771, Stop: 10037, Start Num: 10

Candidate Starts for Psycho_14:

(Start: 8 @9765 has 141 MA's), (Start: 10 @9771 has 108 MA's), (Start: 15 @9828 has 1 MA's), (Start: 18 @9837 has 1 MA's), (29, 9915), (34, 9948), (39, 10002),

Gene: QuincyRose_15 Start: 9718, Stop: 9999, Start Num: 8

Candidate Starts for QuincyRose_15:

(Start: 8 @9718 has 141 MA's), (26, 9874), (30, 9886), (32, 9904), (34, 9916), (39, 9967),

Gene: Rabbs_11 Start: 9137, Stop: 9400, Start Num: 10

Candidate Starts for Rabbs_11:

(Start: 10 @9137 has 108 MA's), (35, 9338), (42, 9383),

Gene: Ramen_16 Start: 9701, Stop: 9982, Start Num: 8

Candidate Starts for Ramen_16:

(Start: 8 @9701 has 141 MA's), (26, 9857), (30, 9869), (32, 9887), (34, 9899), (39, 9950), (41, 9956),

Gene: Rando14_14 Start: 8772, Stop: 9038, Start Num: 10

Candidate Starts for Rando14_14:

(Start: 10 @8772 has 108 MA's), (29, 8916), (34, 8949), (37, 8985), (39, 9003),

Gene: Rapunzel97_16 Start: 9702, Stop: 9983, Start Num: 8

Candidate Starts for Rapunzel97_16:

(Start: 8 @9702 has 141 MA's), (26, 9858), (30, 9870), (32, 9888), (34, 9900), (39, 9951), (41, 9957),

Gene: Remy19_11 Start: 9154, Stop: 9417, Start Num: 10

Candidate Starts for Remy19_11:

(Start: 10 @9154 has 108 MA's), (35, 9355), (42, 9400),

Gene: Renaissance_11 Start: 9154, Stop: 9417, Start Num: 10

Candidate Starts for Renaissance_11:

(Start: 10 @9154 has 108 MA's), (35, 9355), (42, 9400),

Gene: Reptar3000_17 Start: 10705, Stop: 10965, Start Num: 10

Candidate Starts for Reptar3000_17:

(Start: 10 @10705 has 108 MA's), (Start: 15 @10762 has 1 MA's), (21, 10795), (34, 10882), (37, 10918), (39, 10936),

Gene: Richo_16 Start: 8769, Stop: 9059, Start Num: 8

Candidate Starts for Richo_16:

(Start: 8 @8769 has 141 MA's), (Start: 12 @8790 has 2 MA's), (Start: 15 @8832 has 1 MA's), (30, 8943), (32, 8961), (33, 8967), (34, 8973), (39, 9027), (41, 9033),

Gene: Rosmarinus_16 Start: 9729, Stop: 10010, Start Num: 8

Candidate Starts for Rosmarinus_16:

(Start: 8 @9729 has 141 MA's), (26, 9885), (30, 9897), (32, 9915), (34, 9927), (39, 9978),

Gene: Ruthiejr_16 Start: 10559, Stop: 10819, Start Num: 10

Candidate Starts for Ruthiejr_16:

(Start: 10 @10559 has 108 MA's), (Start: 15 @10616 has 1 MA's), (34, 10736), (37, 10772), (39, 10790),

Gene: SamScheppers_15 Start: 10480, Stop: 10740, Start Num: 10

Candidate Starts for SamScheppers_15:

(Start: 10 @10480 has 108 MA's), (Start: 15 @10537 has 1 MA's), (21, 10570), (34, 10657), (37, 10693), (39, 10711),

Gene: SamuelLPlaqson_16 Start: 9643, Stop: 9924, Start Num: 8

Candidate Starts for SamuelLPlaqson_16:

(Start: 8 @9643 has 141 MA's), (26, 9799), (30, 9811), (32, 9829), (33, 9835), (39, 9892), (41, 9898),

Gene: Scarlett_15 Start: 8642, Stop: 8932, Start Num: 8

Candidate Starts for Scarlett_15:

(Start: 8 @8642 has 141 MA's), (Start: 12 @8663 has 2 MA's), (26, 8804), (27, 8807), (34, 8846), (39, 8900), (41, 8906),

Gene: Schiebel_11 Start: 9154, Stop: 9417, Start Num: 10

Candidate Starts for Schiebel_11:

(Start: 10 @9154 has 108 MA's), (35, 9355), (42, 9400),

Gene: SgtBeansprout_12 Start: 8985, Stop: 9266, Start Num: 8

Candidate Starts for SgtBeansprout_12:

(Start: 8 @8985 has 141 MA's), (26, 9141), (32, 9171), (33, 9177), (34, 9183), (35, 9204), (39, 9234), (41, 9240), (43, 9252),

Gene: ShaboiShabazz_11 Start: 9154, Stop: 9417, Start Num: 10

Candidate Starts for ShaboiShabazz_11:

(Start: 10 @9154 has 108 MA's), (35, 9355), (42, 9400),

Gene: Shadow1_14 Start: 8536, Stop: 8823, Start Num: 8

Candidate Starts for Shadow1_14:

(Start: 8 @8536 has 141 MA's), (Start: 12 @8557 has 2 MA's), (13, 8578), (14, 8590), (Start: 15 @8599 has 1 MA's), (32, 8728), (33, 8734), (34, 8740), (39, 8794), (41, 8800),

Gene: Shaobing_16 Start: 8769, Stop: 9059, Start Num: 8

Candidate Starts for Shaobing_16:

(Start: 8 @8769 has 141 MA's), (Start: 12 @8790 has 2 MA's), (Start: 15 @8832 has 1 MA's), (30, 8943), (32, 8961), (33, 8967), (34, 8973), (39, 9027), (41, 9033),

Gene: ShedlockHolmes_15 Start: 9704, Stop: 9988, Start Num: 8

Candidate Starts for ShedlockHolmes_15:

(Start: 8 @9704 has 141 MA's), (Start: 12 @9725 has 2 MA's), (Start: 15 @9767 has 1 MA's), (32, 9875), (39, 9941),

Gene: ShiaSurprise_16 Start: 9741, Stop: 10022, Start Num: 8

Candidate Starts for ShiaSurprise_16:

(Start: 8 @9741 has 141 MA's), (26, 9897), (30, 9909), (32, 9927), (34, 9939), (39, 9990),

Gene: SirPhilip_15 Start: 8399, Stop: 8689, Start Num: 8

Candidate Starts for SirPhilip_15:

(Start: 8 @8399 has 141 MA's), (Start: 12 @8420 has 2 MA's), (26, 8561), (28, 8567), (33, 8597), (34, 8603), (39, 8657), (41, 8663),

Gene: Sizemore_11 Start: 9155, Stop: 9418, Start Num: 10

Candidate Starts for Sizemore_11:

(Start: 10 @9155 has 108 MA's), (35, 9356), (42, 9401),

Gene: Slarp_17 Start: 10964, Stop: 11224, Start Num: 10

Candidate Starts for Slarp_17:

(Start: 10 @10964 has 108 MA's), (Start: 15 @11021 has 1 MA's), (21, 11054), (34, 11141), (37, 11177), (39, 11195),

Gene: Slimphazie_16 Start: 9702, Stop: 9983, Start Num: 8

Candidate Starts for Slimphazie_16:

(Start: 8 @9702 has 141 MA's), (26, 9858), (30, 9870), (32, 9888), (34, 9900), (39, 9951), (41, 9957),

Gene: Sneeze_11 Start: 9136, Stop: 9399, Start Num: 10

Candidate Starts for Sneeze_11:

(Start: 10 @9136 has 108 MA's), (35, 9337), (42, 9382),

Gene: SoSeph_14 Start: 9931, Stop: 10197, Start Num: 10

Candidate Starts for SoSeph_14:

(Start: 10 @9931 has 108 MA's), (Start: 18 @9997 has 1 MA's), (29, 10075), (39, 10162),

Gene: Spock_16 Start: 9741, Stop: 10022, Start Num: 8

Candidate Starts for Spock_16:

(Start: 8 @9741 has 141 MA's), (26, 9897), (30, 9909), (32, 9927), (34, 9939), (39, 9990),

Gene: Stargaze_11 Start: 9410, Stop: 9703, Start Num: 10

Candidate Starts for Stargaze_11:

(Start: 10 @9410 has 108 MA's), (30, 9593),

Gene: Stinson_16 Start: 9664, Stop: 9945, Start Num: 8

Candidate Starts for Stinson_16:

(Start: 8 @9664 has 141 MA's), (26, 9820), (30, 9832), (32, 9850), (39, 9913), (41, 9919),

Gene: Strobilo_12 Start: 7693, Stop: 7965, Start Num: 8

Candidate Starts for Strobilo_12:

(Start: 8 @7693 has 141 MA's), (Start: 12 @7714 has 2 MA's), (Start: 15 @7756 has 1 MA's), (34, 7876), (39, 7930),

Gene: Sulley_16 Start: 9671, Stop: 9952, Start Num: 8

Candidate Starts for Sulley_16:

(Start: 8 @9671 has 141 MA's), (26, 9827), (30, 9839), (32, 9857), (34, 9869), (39, 9920),

Gene: Sunflower1121_14 Start: 8547, Stop: 8834, Start Num: 8

Candidate Starts for Sunflower1121_14:

(Start: 8 @8547 has 141 MA's), (Start: 12 @8568 has 2 MA's), (13, 8589), (14, 8601), (Start: 15 @8610 has 1 MA's), (32, 8739), (33, 8745), (34, 8751), (39, 8805), (41, 8811),

Gene: Sweets_11 Start: 9149, Stop: 9412, Start Num: 10

Candidate Starts for Sweets_11:

(Start: 10 @9149 has 108 MA's), (Start: 15 @9206 has 1 MA's), (35, 9350), (42, 9395),

Gene: Syra333_15 Start: 8643, Stop: 8930, Start Num: 8

Candidate Starts for Syra333_15:

(Start: 8 @8643 has 141 MA's), (Start: 12 @8664 has 2 MA's), (13, 8685), (14, 8697), (Start: 15 @8706 has 1 MA's), (32, 8835), (33, 8841), (34, 8847), (39, 8901), (41, 8907),

Gene: TBond007_15 Start: 9455, Stop: 9739, Start Num: 8

Candidate Starts for TBond007_15:

(Start: 8 @9455 has 141 MA's), (Start: 12 @9476 has 2 MA's), (Start: 15 @9518 has 1 MA's), (32, 9626), (39, 9692),

Gene: TClif_15 Start: 8631, Stop: 8921, Start Num: 8

Candidate Starts for TClif_15:

(Start: 8 @8631 has 141 MA's), (Start: 12 @8652 has 2 MA's), (26, 8793), (33, 8829), (34, 8835), (39, 8889), (41, 8895), (43, 8907),

Gene: TM4_12 Start: 7766, Stop: 8017, Start Num: 12

Candidate Starts for TM4_12:

(Start: 8 @7745 has 141 MA's), (Start: 12 @7766 has 2 MA's), (Start: 15 @7808 has 1 MA's), (34, 7928), (39, 7982),

Gene: Tachez_16 Start: 9664, Stop: 9945, Start Num: 8

Candidate Starts for Tachez_16:

(Start: 8 @9664 has 141 MA's), (26, 9820), (30, 9832), (32, 9850), (34, 9862), (39, 9913), (41, 9919),

Gene: Taheera_11 Start: 9146, Stop: 9409, Start Num: 10

Candidate Starts for Taheera_11:

(Start: 10 @9146 has 108 MA's), (35, 9347), (42, 9392),

Gene: TaiwanKao_16 Start: 9671, Stop: 9952, Start Num: 8

Candidate Starts for TaiwanKao_16:

(Start: 8 @9671 has 141 MA's), (26, 9827), (30, 9839), (32, 9857), (34, 9869), (39, 9920), (41, 9926),

Gene: Taquito_15 Start: 10550, Stop: 10810, Start Num: 10

Candidate Starts for Taquito_15:

(Start: 10 @10550 has 108 MA's), (Start: 15 @10607 has 1 MA's), (34, 10727), (37, 10763), (39, 10781),

Gene: Teejan_12 Start: 8985, Stop: 9266, Start Num: 8

Candidate Starts for Teejan_12:

(Start: 8 @8985 has 141 MA's), (26, 9141), (32, 9171), (33, 9177), (34, 9183), (35, 9204), (39, 9234), (41, 9240), (43, 9252),

Gene: Terror_11 Start: 9146, Stop: 9409, Start Num: 10

Candidate Starts for Terror_11:

(Start: 10 @9146 has 108 MA's), (35, 9347), (42, 9392),

Gene: Thyatira_14 Start: 9803, Stop: 10069, Start Num: 10

Candidate Starts for Thyatira_14:

(Start: 10 @9803 has 108 MA's), (Start: 18 @9869 has 1 MA's), (29, 9947), (34, 9980), (39, 10034),

Gene: Tierra_15 Start: 9346, Stop: 9633, Start Num: 8

Candidate Starts for Tierra_15:

(Start: 8 @9346 has 141 MA's), (Start: 12 @9367 has 2 MA's), (13, 9388), (14, 9400), (Start: 15 @9409 has 1 MA's), (33, 9544), (34, 9550), (35, 9574), (39, 9604), (41, 9610),

Gene: TinaBug_11 Start: 9149, Stop: 9412, Start Num: 10

Candidate Starts for TinaBug_11:

(Start: 10 @9149 has 108 MA's), (Start: 15 @9206 has 1 MA's), (35, 9350), (42, 9395),

Gene: TingHuaYa_16 Start: 8747, Stop: 9016, Start Num: 12

Candidate Starts for TingHuaYa_16:

(2, 8582), (Start: 8 @8726 has 141 MA's), (Start: 12 @8747 has 2 MA's), (14, 8780), (17, 8795), (27, 8891), (33, 8924), (34, 8930), (39, 8984), (41, 8990),

Gene: TiniBug_16 Start: 9643, Stop: 9924, Start Num: 8

Candidate Starts for TiniBug_16:

(Start: 8 @9643 has 141 MA's), (26, 9799), (30, 9811), (32, 9829), (33, 9835), (39, 9892), (41, 9898),

Gene: Tiri_16 Start: 9710, Stop: 9991, Start Num: 8

Candidate Starts for Tiri_16:

(Start: 8 @9710 has 141 MA's), (26, 9866), (30, 9878), (32, 9896), (34, 9908), (39, 9959),

Gene: TomBrady_11 Start: 9155, Stop: 9418, Start Num: 10

Candidate Starts for TomBrady_11:

(Start: 10 @9155 has 108 MA's), (35, 9356), (42, 9401),

Gene: Topper_16 Start: 9741, Stop: 10022, Start Num: 8

Candidate Starts for Topper_16:

(Start: 8 @9741 has 141 MA's), (26, 9897), (30, 9909), (32, 9927), (34, 9939), (39, 9990),

Gene: Torres_12 Start: 8985, Stop: 9266, Start Num: 8

Candidate Starts for Torres_12:

(Start: 8 @8985 has 141 MA's), (26, 9141), (32, 9171), (33, 9177), (34, 9183), (35, 9204), (39, 9234), (41, 9240), (43, 9252),

Gene: TreyKay_16 Start: 9665, Stop: 9946, Start Num: 8

Candidate Starts for TreyKay_16:

(Start: 8 @9665 has 141 MA's), (26, 9821), (30, 9833), (32, 9851), (33, 9857), (34, 9863), (39, 9914), (41, 9920),

Gene: TribbleTrouble_14 Start: 9513, Stop: 9797, Start Num: 8

Candidate Starts for TribbleTrouble_14:

(Start: 8 @9513 has 141 MA's), (Start: 12 @9534 has 2 MA's), (14, 9567), (31, 9669), (39, 9750), (44, 9780),

Gene: TruffulaTree_16 Start: 9698, Stop: 9979, Start Num: 8

Candidate Starts for TruffulaTree_16:

(Start: 8 @9698 has 141 MA's), (26, 9854), (30, 9866), (32, 9884), (34, 9896), (39, 9947), (41, 9953),

Gene: Twitch_16 Start: 9741, Stop: 10022, Start Num: 8

Candidate Starts for Twitch_16:

(Start: 8 @9741 has 141 MA's), (26, 9897), (30, 9909), (32, 9927), (34, 9939), (39, 9990),

Gene: Unicorn_15 Start: 8681, Stop: 8968, Start Num: 8

Candidate Starts for Unicorn_15:

(Start: 8 @8681 has 141 MA's), (Start: 12 @8702 has 2 MA's), (13, 8723), (14, 8735), (Start: 15 @8744 has 1 MA's), (32, 8873), (33, 8879), (34, 8885), (35, 8909), (39, 8939), (41, 8945),

Gene: Urkel_16 Start: 9643, Stop: 9924, Start Num: 8

Candidate Starts for Urkel_16:

(Start: 8 @9643 has 141 MA's), (26, 9799), (30, 9811), (32, 9829), (33, 9835), (39, 9892), (41, 9898),

Gene: Validus_16 Start: 8689, Stop: 8979, Start Num: 8

Candidate Starts for Validus_16:

(Start: 8 @8689 has 141 MA's), (Start: 12 @8710 has 2 MA's), (Start: 15 @8752 has 1 MA's), (30, 8863), (32, 8881), (33, 8887), (34, 8893), (38, 8935), (39, 8947), (41, 8953),

Gene: Veliki_16 Start: 9741, Stop: 10022, Start Num: 8

Candidate Starts for Veliki_16:

(Start: 8 @9741 has 141 MA's), (26, 9897), (30, 9909), (32, 9927), (34, 9939), (39, 9990),

Gene: ViviJ_13 Start: 9656, Stop: 9922, Start Num: 10

Candidate Starts for ViviJ_13:

(Start: 8 @9650 has 141 MA's), (Start: 10 @9656 has 108 MA's), (Start: 15 @9713 has 1 MA's), (Start: 18 @9722 has 1 MA's), (29, 9800), (34, 9833), (39, 9887),

Gene: Waterfoul_14 Start: 9825, Stop: 10091, Start Num: 10

Candidate Starts for Waterfoul_14:

(Start: 10 @9825 has 108 MA's), (Start: 18 @9891 has 1 MA's), (29, 9969), (34, 10002), (39, 10056),

Gene: Wendigo_11 Start: 9154, Stop: 9417, Start Num: 10

Candidate Starts for Wendigo_11:

(Start: 10 @9154 has 108 MA's), (35, 9355), (42, 9400),

Gene: Wintermute_17 Start: 10953, Stop: 11213, Start Num: 10

Candidate Starts for Wintermute_17:

(9, 10950), (Start: 10 @10953 has 108 MA's), (Start: 15 @11010 has 1 MA's), (21, 11043), (34, 11130), (37, 11166), (39, 11184),

Gene: Ximenita_16 Start: 8822, Stop: 9109, Start Num: 8

Candidate Starts for Ximenita_16:

(Start: 8 @8822 has 141 MA's), (Start: 12 @8843 has 2 MA's), (13, 8864), (14, 8876), (Start: 15 @8885 has 1 MA's), (32, 9014), (33, 9020), (34, 9026), (39, 9080), (41, 9086),

Gene: Y10_17 Start: 10953, Stop: 11213, Start Num: 10

Candidate Starts for Y10_17:

(Start: 10 @10953 has 108 MA's), (Start: 15 @11010 has 1 MA's), (21, 11043), (34, 11130), (37, 11166), (39, 11184),

Gene: Y2_17 Start: 10953, Stop: 11213, Start Num: 10

Candidate Starts for Y2_17:

(Start: 10 @10953 has 108 MA's), (Start: 15 @11010 has 1 MA's), (21, 11043), (34, 11130), (37, 11166), (39, 11184),

Gene: YoureAdopted_15 Start: 9674, Stop: 9955, Start Num: 8

Candidate Starts for YoureAdopted_15:

(Start: 8 @9674 has 141 MA's), (26, 9830), (30, 9842), (32, 9860), (34, 9872), (39, 9923), (41, 9929),

Gene: Yuna_16 Start: 8815, Stop: 9102, Start Num: 8

Candidate Starts for Yuna_16:

(Start: 8 @8815 has 141 MA's), (Start: 12 @8836 has 2 MA's), (14, 8869), (16, 8881), (Start: 18 @8887 has 1 MA's), (32, 9007), (33, 9013), (34, 9019), (35, 9043), (39, 9073), (41, 9079),

Gene: Yunkel11_16 Start: 8651, Stop: 8941, Start Num: 8

Candidate Starts for Yunkel11_16:

(2, 8507), (3, 8549), (Start: 8 @8651 has 141 MA's), (Start: 12 @8672 has 2 MA's), (14, 8705), (27, 8816), (28, 8819), (33, 8849), (34, 8855), (38, 8897), (39, 8909), (41, 8915), (43, 8927),

Gene: Zabiza_16 Start: 9699, Stop: 9980, Start Num: 8

Candidate Starts for Zabiza_16:

(Start: 8 @9699 has 141 MA's), (26, 9855), (30, 9867), (32, 9885), (34, 9897), (39, 9948), (41, 9954),

Gene: Zavala_16 Start: 9680, Stop: 9961, Start Num: 8

Candidate Starts for Zavala_16:

(Start: 8 @9680 has 141 MA's), (26, 9836), (30, 9848), (32, 9866), (34, 9878), (39, 9929), (41, 9935),

Gene: ZoMa_11 Start: 9154, Stop: 9417, Start Num: 10

Candidate Starts for ZoMa_11:

(Start: 10 @9154 has 108 MA's), (35, 9355), (42, 9400),

Gene: ZoeJ_12 Start: 7662, Stop: 7913, Start Num: 12

Candidate Starts for ZoeJ_12:

(Start: 8 @7641 has 141 MA's), (Start: 12 @7662 has 2 MA's), (Start: 15 @7704 has 1 MA's), (34, 7824), (39, 7878),

Gene: Zombie_11 Start: 9154, Stop: 9417, Start Num: 10

Candidate Starts for Zombie_11:

(Start: 10 @9154 has 108 MA's), (35, 9355), (42, 9400),