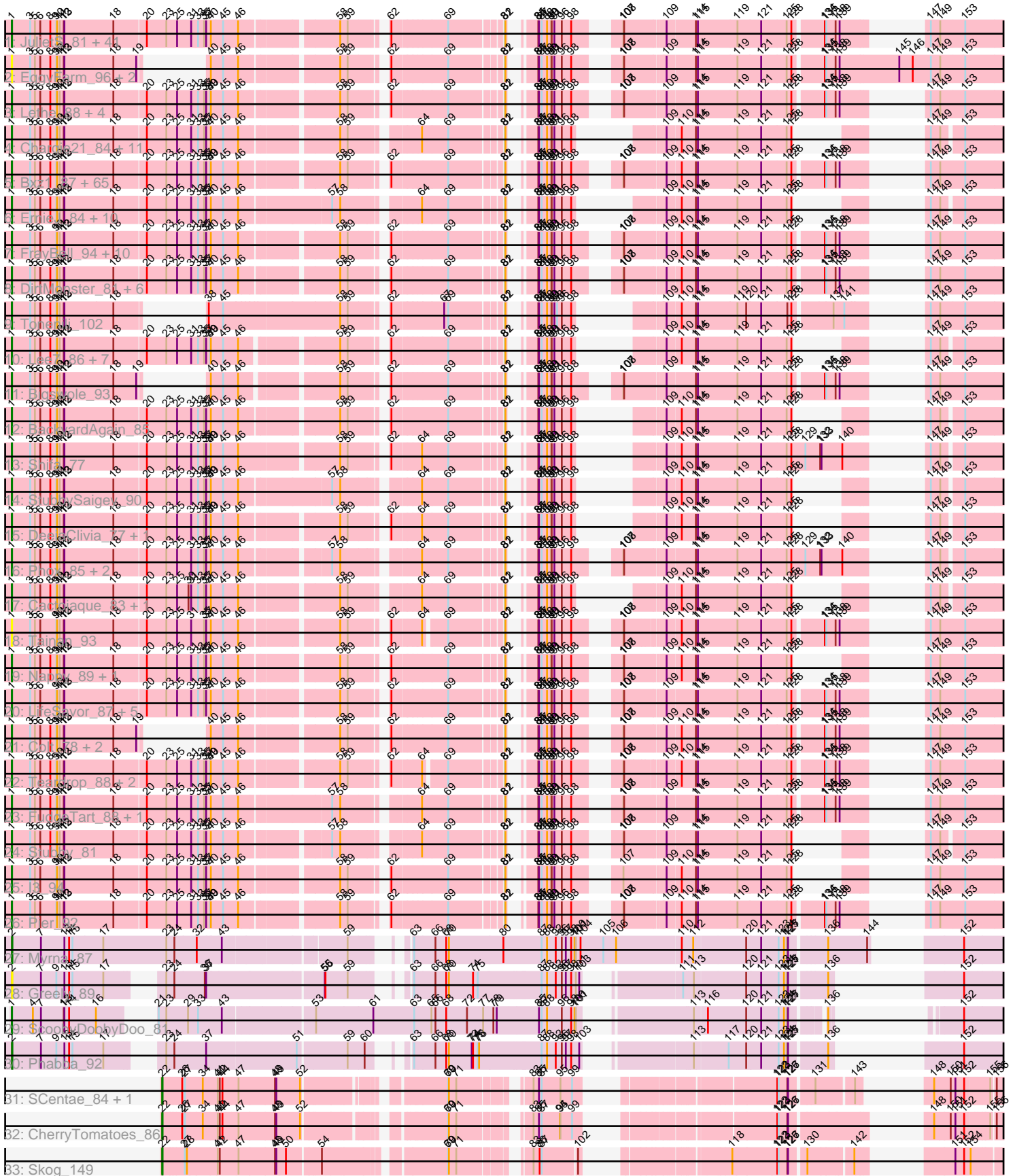


Pham 217623



Note: Tracks are now grouped by subcluster and scaled. Switching in subcluster is indicated by changes in track color. Track scale is now set by default to display the region 30 bp upstream of start 1 to 30 bp downstream of the last possible start. If this default region is judged to be packed too tightly with annotated starts, the track will be further scaled to only show that region of the ORF with annotated starts. This action will be indicated by adding "Zoomed" to the title. For starts, yellow indicates the location of called starts comprised solely of Glimmer/GeneMark auto-annotations, green indicates the location of called starts with at least 1 manual gene annotation.

Pham 217623 Report

This analysis was run 03/28/25 on database version 593.

Pham number 217623 has 205 members, 26 are drafts.

Phages represented in each track:

- Track 1 : JulietS_81, Spec_83, Bangla1971_89, Rahel_87, Ronan_81, Tyke_90, DTDevon_89, Cali_83, Jemmno_88, EmToTheThree_91, Blackdragon_82, QBert_82, LinStu_88, JigglyPuff_94, BeanWater_80, Derek_88, Iota_82, Mangeria_88, Phusco_88, Jedediah_91, EmmaElysia_87, JayJay_94, Tortoise16_86, LRRHood_82, Grungle_75, Koguma_84, Drazdys_88, Sprinklers_83, Littleton_88, Breeniome_88, Haldule_81, SmallFry_88, Gabriel_90, Astraea_86, ET08_77, CharlieB_83, Primadonna_82, Shaqnato_80, Sebata_89, Sauce_88, Salacia_92, Chomp_87
- Track 2 : EggyFarm_96, Grasshills_95, BigCity_96
- Track 3 : Letha_88, Ading_88, Loanshark_88, Guwapp_87, Issimir_87
- Track 4 : Chargie21_84, Fludd_88, Flabslab_83, Basquiat_84, Janiyr_90, Quasimodo_88, ChaylaJr_83, Trinitium_84, Turret_83, ChickenPhender_84, Kboogie_91, EasyJones_91
- Track 5 : Bxz1_87, Babyland_88, Shrimp_88, Khaleesi_87, PurduePete_88, Ngannou_84, YoungMoneyMata_88, Nidhogg_89, Amataga_88, MikeLiesIn_89, Essence_85, CindyLou_89, Napoleon13_84, Naija_87, ParkTD_89, Ghost_87, TinyTim_88, Naval22_93, Zalkecks_89, Kamryn_88, ValleyTerrace_88, Audrick_90, SilverDipper_89, Pleione_91, JPickles_86, Momo_87, Willis_89, NedWong_89, Belieber_82, InigoMontoya_89, DrPhinkDaddy_87, Asterius_91, Bipolarisk_87, Jessibeth14_87, Pio_92, Pivoine_87, Norm_89, Izajani_88, Caravan_83, SVoro_86, Delylah_91, Erdmann_89, Latch_88, Capablanca_90, McWolfish_86, Gamgam_88, NoodleTree_96, Megamind_87, Maby2021_88, Wally_87, YemiJoy2021_89, Shelob_90, Bread_88, Patter_88, Delilah_88, LordLeafolot_93, Rizal_86, Burrough_88, GlutenPhree_86, ZygoTaiga_87, NuevoMundo_94, Roots515_87, Atlantean_87, Daffodil_93, Phlegm_90, McGee_89
- Track 6 : ErnieJ_84, ScottMcG_85, Catera_87, Ablatia_84, Melpomini_82, Spud_88, Rabinovish_85, JustHall_84, Dietrick_80, Morizzled23_88, MoMoMixon_89
- Track 7 : FrayBell_94, BananaFence_87, Domi_82, RoMag_83, BadAgartude_85, IkeLoa_82, StephanieG_87, Bonray_88, Darko_88, Mikro_86, Jezreel_86
- Track 8 : DirtMonster_81, Concombre_95, ArcherS7_87, Yucca_88, FoxtrotP1_88, Demodog_95, InterFolia_97
- Track 9 : Tonenili_102
- Track 10 : Lee7_86, Ewok_89, Gizmo_92, SrishMeg2525_87, Lukilu_79, Fongie_86, Zeenon_90, Ava3_89
- Track 11 : Bigswole_93
- Track 12 : BackyardAgain_85
- Track 13 : Shifa_77

- Track 14 : StubbySaigey_90
- Track 15 : DeejaClivia_77, HyRo_80
- Track 16 : Phox_85, Pinkcreek_79, Alice_81
- Track 17 : Cactojaque_83, Blackbrain_83
- Track 18 : Tainan_93
- Track 19 : Nappy_89, Yassified_84
- Track 20 : LifeSavor_87, Jaygup_88, ShiaLabeouf_88, Adlitam_88, Matsumoto_86, Shnickers_88
- Track 21 : Colt_78, Blubba_77, Cane17_76
- Track 22 : Teardrop_88, Specks_94, LolaVinca_90
- Track 23 : FudgeTart_88, Dandelion_95
- Track 24 : Stubby_81
- Track 25 : I3_94
- Track 26 : Pier_92
- Track 27 : Myrna_87
- Track 28 : Greely_89
- Track 29 : ScoobyDoobyDoo_81
- Track 30 : Phabba_92
- Track 31 : SCentae_84, Pupper_86
- Track 32 : CherryTomatoes_86
- Track 33 : Skog_149

Summary of Final Annotations (See graph section above for start numbers):

The start number called the most often in the published annotations is 1, it was called in 173 of the 179 non-draft genes in the pham.

Genes that call this "Most Annotated" start:

- Ablatia_84, Ading_88, Adlitam_88, Alice_81, Amataga_88, ArcherS7_87, Asterius_91, Astraea_86, Atlantean_87, Audrick_90, Ava3_89, Babyland_88, BackyardAgain_85, BadAgartude_85, BananaFence_87, Bangla1971_89, Basquiat_84, BeanWater_80, Belieber_82, BigCity_96, Bigswole_93, Bipolarisk_87, Blackbrain_83, Blackdragon_82, Blubba_77, Bonray_88, Bread_88, Breeniome_88, Burrough_88, Bxz1_87, Cactojaque_83, Cali_83, Cane17_76, Capablanca_90, Caravan_83, Catera_87, Chargie21_84, CharlieB_83, ChaylaJr_83, ChickenPhender_84, Chomp_87, CindyLou_89, Colt_78, Concombre_95, DTDevon_89, Daffodil_93, Dandelion_95, Darko_88, DeejaClivia_77, Delilah_88, Delylah_91, Demodog_95, Derek_88, Dietrick_80, DirtMonster_81, Domi_82, DrPhinkDaddy_87, Drazdys_88, ET08_77, EasyJones_91, EggyFarm_96, EmToTheThree_91, EmmaElysia_87, Erdmann_89, ErnieJ_84, Essence_85, Ewok_89, Flabslab_83, Fludd_88, Fongie_86, FoxtrotP1_88, FrayBell_94, FudgeTart_88, Gabriel_90, Gamgam_88, Ghost_87, Gizmo_92, GlutenPhree_86, Grasshills_95, Grungle_75, Guwapp_87, Halldule_81, HyRo_80, I3_94, IkeLoa_82, InigoMontoya_89, InterFolia_97, Iota_82, Issimir_87, Izajani_88, JPickles_86, Janiyra_90, JayJay_94, Jaygup_88, Jedediah_91, Jemmno_88, Jessibeth14_87, Jezreel_86, JigglyPuff_94, JulietS_81, JustHall_84, Kamryn_88, Kboogie_91, Khaleesi_87, Koguma_84, LRRHood_82, Latch_88, Lee7_86, Lethe_88, LifeSavor_87, LinStu_88, Littleton_88, Loanshark_88, LolaVinca_90, LordLeafolot_93, Lukilu_79, Maby2021_88, Mangeria_88, Matsumoto_86, McGee_89, McWolfish_86, Megamind_87, Melpomini_82, MikeLiesIn_89, Mikro_86,

MoMoMixon_89, Momo_87, Morizzled23_88, Naija_87, Napoleon13_84, Nappy_89, Naval22_93, NedWong_89, Ngannou_84, Nidhogg_89, NoodleTree_96, Norm_89, NuevoMundo_94, ParkTD_89, Patter_88, Phlegm_90, Phox_85, Phusco_88, Pier_92, Pinkcreek_79, Pio_92, Pivoine_87, Pleione_91, Primadonna_82, PurduePete_88, QBert_82, Quasimodo_88, Rabinovish_85, Rahel_87, Rizal_86, RoMag_83, Ronan_81, Roots515_87, SVoro_86, Salacia_92, Sauce_88, ScoobyDoobyDoo_81, ScottMcG_85, Sebata_89, Shaqnato_80, Shelob_90, ShiaLabeouf_88, Shifa_77, Shnickers_88, Shrimp_88, SilverDipper_89, SmallFry_88, Spec_83, Specks_94, Sprinklers_83, Spud_88, SrishMeg2525_87, StephanieG_87, StubbySaigey_90, Stubby_81, Tainan_93, Teardrop_88, TinyTim_88, Tonenili_102, Tortoise16_86, Trinitium_84, Turret_83, Tyke_90, ValleyTerrace_88, Wally_87, Willis_89, Yassified_84, YemiJoy2021_89, YoungMoneyMata_88, Yucca_88, Zalkecks_89, Zeenon_90, ZygoTaiga_87,

Genes that have the "Most Annotated" start but do not call it:

-

Genes that do not have the "Most Annotated" start:

- CherryTomatoes_86, Greely_89, Myrna_87, Phabba_92, Pupper_86, SCentae_84, Skog_149,

Summary by start number:

Start 1:

- Found in 198 of 205 (96.6%) of genes in pham
- Manual Annotations of this start: 173 of 179
- Called 100.0% of time when present
- Phage (with cluster) where this start called: Ablatia_84 (C1), Ading_88 (C1), Adlitam_88 (C1), Alice_81 (C1), Amataga_88 (C1), ArcherS7_87 (C1), Asterius_91 (C1), Astraea_86 (C1), Atlantean_87 (C1), Audrick_90 (C1), Ava3_89 (C1), Babyland_88 (C1), BackyardAgain_85 (C1), BadAgartude_85 (C1), BananaFence_87 (C1), Bangla1971_89 (C1), Basquiat_84 (C1), BeanWater_80 (C1), Belieber_82 (C1), BigCity_96 (C1), Bigswole_93 (C1), Bipolarisk_87 (C1), Blackbrain_83 (C1), Blackdragon_82 (C1), Blubba_77 (C1), Bonray_88 (C1), Bread_88 (C1), Breeniome_88 (C1), Burrough_88 (C1), Bxz1_87 (C1), Cactojaque_83 (C1), Cali_83 (C1), Cane17_76 (C1), Capablanca_90 (C1), Caravan_83 (C1), Catera_87 (C1), Chargie21_84 (C1), CharlieB_83 (C1), ChaylaJr_83 (C1), ChickenPhender_84 (C1), Chomp_87 (C1), CindyLou_89 (C1), Colt_78 (C1), Concombre_95 (C1), DTDevon_89 (C1), Daffodil_93 (C1), Dandelion_95 (C1), Darko_88 (C1), DeejaClivia_77 (C1), Delilah_88 (C1), Delylah_91 (C1), Demodog_95 (C1), Derek_88 (C1), Dietrick_80 (C1), DirtMonster_81 (C1), Domi_82 (C1), DrPhinkDaddy_87 (C1), Drazdys_88 (C1), ET08_77 (C1), EasyJones_91 (C1), EggyFarm_96 (C1), EmToTheThree_91 (C1), EmmaElysia_87 (C1), Erdmann_89 (C1), ErnieJ_84 (C1), Essence_85 (C1), Ewok_89 (C1), Flabslab_83 (C1), Fludd_88 (C1), Fongie_86 (C1), FoxtrotP1_88 (C1), FrayBell_94 (C1), FudgeTart_88 (C1), Gabriel_90 (C1), Gamgam_88 (C1), Ghost_87 (C1), Gizmo_92 (C1), GlutenPhree_86 (C1), Grasshills_95 (C1), Grungle_75 (C1), Guwapp_87 (C1), Halldule_81 (C1), HyRo_80 (C1), I3_94 (C1), IkeLoa_82 (C1), InigoMontoya_89 (C1), InterFolia_97 (C1), Iota_82 (C1), Issimir_87 (C1), Izajani_88 (C1), JPickles_86 (C1), Janiyra_90 (C1), JayJay_94 (C1), Jaygup_88 (C1), Jedediah_91 (C1), Jemmno_88 (C1), Jessibeth14_87 (C1), Jezreel_86 (C1), JigglyPuff_94 (C1), JulietS_81 (C1), JustHall_84 (C1), Kamryn_88 (C1), Kboogie_91 (C1), Khaleesi_87 (C1), Koguma_84 (C1), LRRHood_82 (C1), Latch_88 (C1), Lee7_86 (C1), Lethe_88 (C1), LifeSavor_87 (C1), LinStu_88 (C1), Littleton_88 (C1),

Loanshark_88 (C1), LolaVinca_90 (C1), LordLeafot_93 (C1), Lukilu_79 (C1), Maby2021_88 (C1), Mangeria_88 (C1), Matsumoto_86 (C1), McGee_89 (C1), McWolfish_86 (C1), Megamind_87 (C1), Melpomini_82 (C1), MikeLiesIn_89 (C1), Mikro_86 (C1), MoMoMixon_89 (C1), Momo_87 (C1), Morizzled23_88 (C1), Naija_87 (C1), Napoleon13_84 (C1), Nappy_89 (C1), Naval22_93 (C1), NedWong_89 (C1), Ngannou_84 (C1), Nidhogg_89 (C1), NoodleTree_96 (C1), Norm_89 (C1), NuevoMundo_94 (C1), ParkTD_89 (C1), Patter_88 (C1), Phlegm_90 (C1), Phox_85 (C1), Phusco_88 (C1), Pier_92 (C1), Pinkcreek_79 (C1), Pio_92 (C1), Pivoine_87 (C1), Pleione_91 (C1), Primadonna_82 (C1), PurduePete_88 (C1), QBert_82 (C1), Quasimodo_88 (C1), Rabinovish_85 (C1), Rahel_87 (C1), Rizal_86 (C1), RoMag_83 (C1), Ronan_81 (C1), Roots515_87 (C1), SVoro_86 (C1), Salacia_92 (C1), Sauce_88 (C1), ScoobyDoobyDoo_81 (C2), ScottMcG_85 (C1), Sebata_89 (C1), Shaqnato_80 (C1), Shelob_90 (C1), ShiaLabeouf_88 (C1), Shifa_77 (C1), Shnickers_88 (C1), Shrimp_88 (C1), SilverDipper_89 (C1), SmallFry_88 (C1), Spec_83 (C1), Specks_94 (C1), Sprinklers_83 (C1), Spud_88 (C1), SrishMeg2525_87 (C1), StephanieG_87 (C1), StubbySaigey_90 (C1), Stubby_81 (C1), Tainan_93 (C1), Teardrop_88 (C1), TinyTim_88 (C1), Tonenili_102 (C1), Tortoise16_86 (C1), Trinitium_84 (C1), Turret_83 (C1), Tyke_90 (C1), ValleyTerrace_88 (C1), Wally_87 (C1), Willis_89 (C1), Yassified_84 (C1), YemiJoy2021_89 (C1), YoungMoneyMata_88 (C1), Yucca_88 (C1), Zalkecks_89 (C1), Zeenon_90 (C1), ZygoTaiga_87 (C1),

Start 2:

- Found in 3 of 205 (1.5%) of genes in pham
- Manual Annotations of this start: 2 of 179
- Called 100.0% of time when present
- Phage (with cluster) where this start called: Greely_89 (C2), Myrna_87 (C2), Phabba_92 (C2),

Start 22:

- Found in 4 of 205 (2.0%) of genes in pham
- Manual Annotations of this start: 4 of 179
- Called 100.0% of time when present
- Phage (with cluster) where this start called: CherryTomatoes_86 (DO), Pupper_86 (DO), SCentae_84 (DO), Skog_149 (DO),

Summary by clusters:

There are 3 clusters represented in this pham: DO, C1, C2,

Info for manual annotations of cluster C1:

- Start number 1 was manually annotated 172 times for cluster C1.

Info for manual annotations of cluster C2:

- Start number 1 was manually annotated 1 time for cluster C2.
- Start number 2 was manually annotated 2 times for cluster C2.

Info for manual annotations of cluster DO:

- Start number 22 was manually annotated 4 times for cluster DO.

Gene Information:

Gene: Ablatia_84 Start: 30993, Stop: 34355, Start Num: 1

Candidate Starts for Ablatia_84:

(Start: 1 @30993 has 173 MA's), (3, 31074), (5, 31095), (6, 31119), (8, 31164), (9, 31191), (10, 31194), (11, 31206), (12, 31224), (13, 31227), (18, 31446), (20, 31584), (23, 31671), (25, 31719), (31, 31782), (33, 31812), (35, 31839), (37, 31848), (40, 31869), (45, 31923), (46, 31989), (57, 32367), (58, 32403), (64, 32679), (69, 32790), (81, 32994), (82, 32997), (84, 33054), (85, 33057), (87, 33069), (88, 33093), (89, 33111), (90, 33114), (91, 33126), (96, 33159), (98, 33201), (109, 33342), (110, 33396), (114, 33459), (115, 33468), (119, 33642), (121, 33747), (125, 33858), (128, 33879), (147, 34014), (149, 34056), (153, 34140),

Gene: Ading_88 Start: 31088, Stop: 34798, Start Num: 1

Candidate Starts for Ading_88:

(Start: 1 @31088 has 173 MA's), (3, 31169), (5, 31190), (6, 31214), (8, 31259), (9, 31286), (10, 31289), (11, 31301), (12, 31319), (13, 31322), (18, 31541), (20, 31679), (23, 31766), (25, 31814), (31, 31877), (33, 31907), (35, 31934), (37, 31943), (39, 31961), (40, 31964), (45, 32018), (46, 32084), (58, 32477), (59, 32510), (62, 32630), (69, 32861), (81, 33065), (82, 33068), (84, 33125), (85, 33128), (87, 33140), (88, 33164), (89, 33182), (90, 33185), (91, 33197), (96, 33230), (98, 33272), (107, 33398), (108, 33401), (109, 33566), (114, 33683), (115, 33692), (119, 33866), (121, 33971), (125, 34082), (128, 34103), (134, 34226), (135, 34232), (138, 34274), (139, 34292), (147, 34436), (149, 34478), (153, 34583),

Gene: Adlitam_88 Start: 31105, Stop: 34815, Start Num: 1

Candidate Starts for Adlitam_88:

(Start: 1 @31105 has 173 MA's), (3, 31186), (5, 31207), (6, 31231), (9, 31303), (10, 31306), (11, 31318), (12, 31336), (13, 31339), (18, 31558), (20, 31696), (23, 31783), (25, 31831), (31, 31894), (33, 31924), (35, 31951), (37, 31960), (40, 31981), (45, 32035), (46, 32101), (58, 32494), (59, 32527), (62, 32647), (69, 32878), (81, 33082), (82, 33085), (84, 33142), (85, 33145), (87, 33157), (88, 33181), (89, 33199), (90, 33202), (91, 33214), (96, 33247), (98, 33289), (107, 33415), (108, 33418), (109, 33583), (114, 33700), (115, 33709), (119, 33883), (121, 33988), (125, 34099), (128, 34120), (134, 34243), (135, 34249), (138, 34291), (139, 34309), (147, 34453), (149, 34495), (153, 34600),

Gene: Alice_81 Start: 29790, Stop: 33500, Start Num: 1

Candidate Starts for Alice_81:

(Start: 1 @29790 has 173 MA's), (3, 29871), (5, 29892), (6, 29916), (8, 29961), (9, 29988), (10, 29991), (11, 30003), (12, 30021), (13, 30024), (18, 30243), (20, 30381), (23, 30468), (25, 30516), (31, 30579), (33, 30609), (35, 30636), (37, 30645), (40, 30666), (45, 30720), (46, 30786), (57, 31134), (58, 31170), (64, 31446), (69, 31557), (81, 31761), (82, 31764), (84, 31821), (85, 31824), (87, 31836), (88, 31860), (89, 31878), (90, 31881), (91, 31893), (96, 31926), (98, 31968), (107, 32094), (108, 32097), (109, 32262), (114, 32379), (115, 32388), (119, 32562), (121, 32667), (125, 32778), (128, 32799), (129, 32862), (132, 32928), (133, 32934), (140, 33027), (147, 33159), (149, 33201), (153, 33285),

Gene: Amataga_88 Start: 31151, Stop: 34864, Start Num: 1

Candidate Starts for Amataga_88:

(Start: 1 @31151 has 173 MA's), (3, 31232), (5, 31253), (6, 31277), (8, 31322), (9, 31349), (10, 31352), (11, 31364), (12, 31382), (13, 31385), (18, 31604), (20, 31742), (23, 31829), (25, 31877), (31, 31940), (33, 31970), (35, 31997), (37, 32006), (39, 32024), (40, 32027), (45, 32081), (46, 32147), (58, 32540), (59, 32573), (62, 32693), (69, 32927), (81, 33131), (82, 33134), (84, 33191), (85, 33194), (87, 33206), (88, 33230), (89, 33248), (90, 33251), (91, 33263), (96, 33296), (98, 33338), (107, 33464), (108, 33467), (109, 33632), (110, 33686), (114, 33749), (115, 33758), (119, 33932), (121, 34037), (125, 34148), (128, 34169), (134, 34292), (135, 34298), (138, 34340), (139, 34358), (147, 34502), (149, 34544), (153, 34649),

Gene: ArcherS7_87 Start: 31472, Stop: 35182, Start Num: 1

Candidate Starts for ArcherS7_87:

(Start: 1 @31472 has 173 MA's), (3, 31553), (5, 31574), (6, 31598), (8, 31643), (9, 31670), (10, 31673), (11, 31685), (12, 31703), (13, 31706), (18, 31925), (20, 32063), (23, 32150), (25, 32198), (31, 32261), (33, 32291), (35, 32318), (37, 32327), (40, 32348), (45, 32402), (46, 32468), (58, 32861), (59, 32894), (62, 33014), (69, 33245), (81, 33449), (82, 33452), (84, 33509), (85, 33512), (87, 33524), (88, 33548), (89, 33566), (90, 33569), (91, 33581), (96, 33614), (98, 33656), (107, 33782), (108, 33785), (109, 33950), (110, 34004), (114, 34067), (115, 34076), (119, 34250), (121, 34355), (125, 34466), (128, 34487), (134, 34610), (135, 34616), (138, 34658), (139, 34676), (147, 34820), (149, 34862), (153, 34967),

Gene: Asterius_91 Start: 31454, Stop: 35167, Start Num: 1

Candidate Starts for Asterius_91:

(Start: 1 @31454 has 173 MA's), (3, 31535), (5, 31556), (6, 31580), (8, 31625), (9, 31652), (10, 31655), (11, 31667), (12, 31685), (13, 31688), (18, 31907), (20, 32045), (23, 32132), (25, 32180), (31, 32243), (33, 32273), (35, 32300), (37, 32309), (39, 32327), (40, 32330), (45, 32384), (46, 32450), (58, 32843), (59, 32876), (62, 32996), (69, 33230), (81, 33434), (82, 33437), (84, 33494), (85, 33497), (87, 33509), (88, 33533), (89, 33551), (90, 33554), (91, 33566), (96, 33599), (98, 33641), (107, 33767), (108, 33770), (109, 33935), (110, 33989), (114, 34052), (115, 34061), (119, 34235), (121, 34340), (125, 34451), (128, 34472), (134, 34595), (135, 34601), (138, 34643), (139, 34661), (147, 34805), (149, 34847), (153, 34952),

Gene: Astraea_86 Start: 31333, Stop: 35043, Start Num: 1

Candidate Starts for Astraea_86:

(Start: 1 @31333 has 173 MA's), (3, 31414), (5, 31435), (6, 31459), (8, 31504), (9, 31531), (10, 31534), (11, 31546), (12, 31564), (13, 31567), (18, 31786), (20, 31924), (23, 32011), (25, 32059), (31, 32122), (33, 32152), (35, 32179), (37, 32188), (40, 32209), (45, 32263), (46, 32329), (58, 32722), (59, 32755), (62, 32875), (69, 33106), (81, 33310), (82, 33313), (84, 33370), (85, 33373), (87, 33385), (88, 33409), (89, 33427), (90, 33430), (91, 33442), (96, 33475), (98, 33517), (107, 33643), (108, 33646), (109, 33811), (114, 33928), (115, 33937), (119, 34111), (121, 34216), (125, 34327), (128, 34348), (134, 34471), (135, 34477), (138, 34519), (139, 34537), (147, 34681), (149, 34723), (153, 34828),

Gene: Atlantean_87 Start: 31151, Stop: 34864, Start Num: 1

Candidate Starts for Atlantean_87:

(Start: 1 @31151 has 173 MA's), (3, 31232), (5, 31253), (6, 31277), (8, 31322), (9, 31349), (10, 31352), (11, 31364), (12, 31382), (13, 31385), (18, 31604), (20, 31742), (23, 31829), (25, 31877), (31, 31940), (33, 31970), (35, 31997), (37, 32006), (39, 32024), (40, 32027), (45, 32081), (46, 32147), (58, 32540), (59, 32573), (62, 32693), (69, 32927), (81, 33131), (82, 33134), (84, 33191), (85, 33194), (87, 33206), (88, 33230), (89, 33248), (90, 33251), (91, 33263), (96, 33296), (98, 33338), (107, 33464), (108, 33467), (109, 33632), (110, 33686), (114, 33749), (115, 33758), (119, 33932), (121, 34037), (125, 34148), (128, 34169), (134, 34292), (135, 34298), (138, 34340), (139, 34358), (147, 34502), (149, 34544), (153, 34649),

Gene: Audrick_90 Start: 31130, Stop: 34843, Start Num: 1

Candidate Starts for Audrick_90:

(Start: 1 @31130 has 173 MA's), (3, 31211), (5, 31232), (6, 31256), (8, 31301), (9, 31328), (10, 31331), (11, 31343), (12, 31361), (13, 31364), (18, 31583), (20, 31721), (23, 31808), (25, 31856), (31, 31919), (33, 31949), (35, 31976), (37, 31985), (39, 32003), (40, 32006), (45, 32060), (46, 32126), (58, 32519), (59, 32552), (62, 32672), (69, 32906), (81, 33110), (82, 33113), (84, 33170), (85, 33173), (87, 33185), (88, 33209), (89, 33227), (90, 33230), (91, 33242), (96, 33275), (98, 33317), (107, 33443), (108, 33446), (109, 33611), (110, 33665), (114, 33728), (115, 33737), (119, 33911), (121, 34016), (125, 34127), (128, 34148), (134, 34271), (135, 34277), (138, 34319), (139, 34337), (147, 34481), (149, 34523), (153, 34628),

Gene: Ava3_89 Start: 32205, Stop: 35540, Start Num: 1

Candidate Starts for Ava3_89:

(Start: 1 @32205 has 173 MA's), (3, 32286), (5, 32307), (6, 32331), (8, 32376), (9, 32403), (10, 32406), (11, 32418), (12, 32436), (13, 32439), (18, 32658), (20, 32796), (23, 32883), (25, 32931), (31, 32994), (33, 33024), (35, 33051), (37, 33060), (39, 33078), (40, 33081), (45, 33135), (46, 33201), (58, 33594), (59, 33627), (62, 33747), (69, 33978), (81, 34182), (82, 34185), (84, 34242), (85, 34245), (87, 34257), (88, 34281), (89, 34299), (90, 34302), (91, 34314), (96, 34347), (98, 34389), (109, 34530), (110, 34584), (114, 34644), (115, 34653), (119, 34827), (121, 34932), (125, 35043), (128, 35064), (147, 35199), (149, 35241), (153, 35325),

Gene: Babyland_88 Start: 30590, Stop: 34303, Start Num: 1

Candidate Starts for Babyland_88:

(Start: 1 @30590 has 173 MA's), (3, 30671), (5, 30692), (6, 30716), (8, 30761), (9, 30788), (10, 30791), (11, 30803), (12, 30821), (13, 30824), (18, 31043), (20, 31181), (23, 31268), (25, 31316), (31, 31379), (33, 31409), (35, 31436), (37, 31445), (39, 31463), (40, 31466), (45, 31520), (46, 31586), (58, 31979), (59, 32012), (62, 32132), (69, 32366), (81, 32570), (82, 32573), (84, 32630), (85, 32633), (87, 32645), (88, 32669), (89, 32687), (90, 32690), (91, 32702), (96, 32735), (98, 32777), (107, 32903), (108, 32906), (109, 33071), (110, 33125), (114, 33188), (115, 33197), (119, 33371), (121, 33476), (125, 33587), (128, 33608), (134, 33731), (135, 33737), (138, 33779), (139, 33797), (147, 33941), (149, 33983), (153, 34088),

Gene: BackyardAgain_85 Start: 31040, Stop: 34378, Start Num: 1

Candidate Starts for BackyardAgain_85:

(Start: 1 @31040 has 173 MA's), (3, 31121), (5, 31142), (6, 31166), (8, 31211), (9, 31238), (10, 31241), (11, 31253), (12, 31271), (13, 31274), (18, 31493), (20, 31631), (23, 31718), (25, 31766), (31, 31829), (33, 31859), (35, 31886), (37, 31895), (40, 31916), (45, 31970), (46, 32036), (58, 32429), (59, 32462), (62, 32582), (69, 32813), (81, 33017), (82, 33020), (84, 33077), (85, 33080), (87, 33092), (88, 33116), (89, 33134), (90, 33137), (91, 33149), (96, 33182), (98, 33224), (109, 33365), (110, 33419), (114, 33482), (115, 33491), (119, 33665), (121, 33770), (125, 33881), (128, 33902), (147, 34037), (149, 34079), (153, 34163),

Gene: BadAgartude_85 Start: 32206, Stop: 35919, Start Num: 1

Candidate Starts for BadAgartude_85:

(Start: 1 @32206 has 173 MA's), (3, 32287), (5, 32308), (6, 32332), (9, 32404), (10, 32407), (11, 32419), (12, 32437), (13, 32440), (18, 32659), (20, 32797), (23, 32884), (25, 32932), (31, 32995), (33, 33025), (35, 33052), (37, 33061), (40, 33082), (45, 33136), (46, 33202), (58, 33595), (59, 33628), (62, 33748), (69, 33982), (81, 34186), (82, 34189), (84, 34246), (85, 34249), (87, 34261), (88, 34285), (89, 34303), (90, 34306), (91, 34318), (96, 34351), (98, 34393), (107, 34519), (108, 34522), (109, 34687), (110, 34741), (114, 34804), (115, 34813), (119, 34987), (121, 35092), (125, 35203), (128, 35224), (134, 35347), (135, 35353), (138, 35395), (139, 35413), (147, 35557), (149, 35599), (153, 35704),

Gene: BananaFence_87 Start: 31688, Stop: 35401, Start Num: 1

Candidate Starts for BananaFence_87:

(Start: 1 @31688 has 173 MA's), (3, 31769), (5, 31790), (6, 31814), (9, 31886), (10, 31889), (11, 31901), (12, 31919), (13, 31922), (18, 32141), (20, 32279), (23, 32366), (25, 32414), (31, 32477), (33, 32507), (35, 32534), (37, 32543), (40, 32564), (45, 32618), (46, 32684), (58, 33077), (59, 33110), (62, 33230), (69, 33464), (81, 33668), (82, 33671), (84, 33728), (85, 33731), (87, 33743), (88, 33767), (89, 33785), (90, 33788), (91, 33800), (96, 33833), (98, 33875), (107, 34001), (108, 34004), (109, 34169), (110, 34223), (114, 34286), (115, 34295), (119, 34469), (121, 34574), (125, 34685), (128, 34706), (134, 34829), (135, 34835), (138, 34877), (139, 34895), (147, 35039), (149, 35081), (153, 35186),

Gene: Bangla1971_89 Start: 31602, Stop: 35312, Start Num: 1

Candidate Starts for Bangla1971_89:

(Start: 1 @31602 has 173 MA's), (3, 31683), (5, 31704), (6, 31728), (8, 31773), (9, 31800), (10, 31803), (11, 31815), (12, 31833), (13, 31836), (18, 32055), (20, 32193), (23, 32280), (25, 32328), (31, 32391), (33, 32421), (35, 32448), (37, 32457), (40, 32478), (45, 32532), (46, 32598), (58, 32991), (59, 33024), (62, 33144), (69, 33375), (81, 33579), (82, 33582), (84, 33639), (85, 33642), (87, 33654), (88, 33678), (89, 33696), (90, 33699), (91, 33711), (96, 33744), (98, 33786), (107, 33912), (108, 33915), (109, 34080), (114, 34197), (115, 34206), (119, 34380), (121, 34485), (125, 34596), (128, 34617), (134, 34740), (135, 34746), (138, 34788), (139, 34806), (147, 34950), (149, 34992), (153, 35097),

Gene: Basquiat_84 Start: 30538, Stop: 33879, Start Num: 1

Candidate Starts for Basquiat_84:

(Start: 1 @30538 has 173 MA's), (3, 30619), (5, 30640), (6, 30664), (8, 30709), (9, 30736), (10, 30739), (11, 30751), (12, 30769), (13, 30772), (18, 30991), (20, 31129), (23, 31216), (25, 31264), (31, 31327), (33, 31357), (35, 31384), (37, 31393), (40, 31414), (45, 31468), (46, 31534), (58, 31927), (59, 31960), (64, 32206), (69, 32317), (81, 32521), (82, 32524), (84, 32581), (85, 32584), (87, 32596), (88, 32620), (89, 32638), (90, 32641), (91, 32653), (96, 32686), (98, 32728), (109, 32869), (110, 32923), (114, 32983), (115, 32992), (119, 33166), (121, 33271), (125, 33382), (128, 33403), (147, 33538), (149, 33580), (153, 33664),

Gene: BeanWater_80 Start: 30742, Stop: 34452, Start Num: 1

Candidate Starts for BeanWater_80:

(Start: 1 @30742 has 173 MA's), (3, 30823), (5, 30844), (6, 30868), (8, 30913), (9, 30940), (10, 30943), (11, 30955), (12, 30973), (13, 30976), (18, 31195), (20, 31333), (23, 31420), (25, 31468), (31, 31531), (33, 31561), (35, 31588), (37, 31597), (40, 31618), (45, 31672), (46, 31738), (58, 32131), (59, 32164), (62, 32284), (69, 32515), (81, 32719), (82, 32722), (84, 32779), (85, 32782), (87, 32794), (88, 32818), (89, 32836), (90, 32839), (91, 32851), (96, 32884), (98, 32926), (107, 33052), (108, 33055), (109, 33220), (114, 33337), (115, 33346), (119, 33520), (121, 33625), (125, 33736), (128, 33757), (134, 33880), (135, 33886), (138, 33928), (139, 33946), (147, 34090), (149, 34132), (153, 34237),

Gene: Belieber_82 Start: 30503, Stop: 34216, Start Num: 1

Candidate Starts for Belieber_82:

(Start: 1 @30503 has 173 MA's), (3, 30584), (5, 30605), (6, 30629), (8, 30674), (9, 30701), (10, 30704), (11, 30716), (12, 30734), (13, 30737), (18, 30956), (20, 31094), (23, 31181), (25, 31229), (31, 31292), (33, 31322), (35, 31349), (37, 31358), (39, 31376), (40, 31379), (45, 31433), (46, 31499), (58, 31892), (59, 31925), (62, 32045), (69, 32279), (81, 32483), (82, 32486), (84, 32543), (85, 32546), (87, 32558), (88, 32582), (89, 32600), (90, 32603), (91, 32615), (96, 32648), (98, 32690), (107, 32816), (108, 32819), (109, 32984), (110, 33038), (114, 33101), (115, 33110), (119, 33284), (121, 33389), (125, 33500), (128, 33521), (134, 33644), (135, 33650), (138, 33692), (139, 33710), (147, 33854), (149, 33896), (153, 34001),

Gene: BigCity_96 Start: 34232, Stop: 37912, Start Num: 1

Candidate Starts for BigCity_96:

(Start: 1 @34232 has 173 MA's), (3, 34313), (5, 34334), (6, 34358), (8, 34403), (9, 34430), (10, 34433), (11, 34445), (12, 34463), (13, 34466), (18, 34685), (19, 34787), (40, 34820), (45, 34874), (46, 34940), (58, 35333), (59, 35366), (62, 35486), (69, 35717), (81, 35921), (82, 35924), (84, 35981), (85, 35984), (87, 35996), (88, 36020), (89, 36038), (90, 36041), (91, 36053), (96, 36086), (98, 36128), (107, 36254), (108, 36257), (109, 36422), (114, 36539), (115, 36548), (119, 36722), (121, 36827), (125, 36938), (128, 36959), (134, 37082), (135, 37088), (138, 37130), (139, 37148), (145, 37409), (146, 37469), (147, 37550), (149, 37592), (153, 37697),

Gene: Bigswole_93 Start: 34874, Stop: 38281, Start Num: 1

Candidate Starts for Bigswole_93:

(Start: 1 @34874 has 173 MA's), (3, 34955), (5, 34976), (6, 35000), (8, 35045), (9, 35072), (10, 35075), (11, 35087), (12, 35105), (13, 35108), (18, 35327), (19, 35429), (40, 35462), (45, 35516), (46, 35582),

(58, 35960), (59, 35993), (62, 36113), (69, 36344), (81, 36548), (82, 36551), (84, 36608), (85, 36611), (87, 36623), (88, 36647), (89, 36665), (90, 36668), (91, 36680), (96, 36713), (98, 36755), (107, 36881), (108, 36884), (109, 37049), (114, 37166), (115, 37175), (119, 37349), (121, 37454), (125, 37565), (128, 37586), (134, 37709), (135, 37715), (138, 37757), (139, 37775), (147, 37919), (149, 37961), (153, 38066),

Gene: Bipolarisk_87 Start: 31857, Stop: 35570, Start Num: 1

Candidate Starts for Bipolarisk_87:

(Start: 1 @31857 has 173 MA's), (3, 31938), (5, 31959), (6, 31983), (8, 32028), (9, 32055), (10, 32058), (11, 32070), (12, 32088), (13, 32091), (18, 32310), (20, 32448), (23, 32535), (25, 32583), (31, 32646), (33, 32676), (35, 32703), (37, 32712), (39, 32730), (40, 32733), (45, 32787), (46, 32853), (58, 33246), (59, 33279), (62, 33399), (69, 33633), (81, 33837), (82, 33840), (84, 33897), (85, 33900), (87, 33912), (88, 33936), (89, 33954), (90, 33957), (91, 33969), (96, 34002), (98, 34044), (107, 34170), (108, 34173), (109, 34338), (110, 34392), (114, 34455), (115, 34464), (119, 34638), (121, 34743), (125, 34854), (128, 34875), (134, 34998), (135, 35004), (138, 35046), (139, 35064), (147, 35208), (149, 35250), (153, 35355),

Gene: Blackbrain_83 Start: 30355, Stop: 33696, Start Num: 1

Candidate Starts for Blackbrain_83:

(Start: 1 @30355 has 173 MA's), (3, 30436), (5, 30457), (6, 30481), (8, 30526), (9, 30553), (10, 30556), (11, 30568), (12, 30586), (13, 30589), (18, 30808), (20, 30946), (23, 31033), (25, 31081), (30, 31132), (31, 31144), (33, 31174), (35, 31201), (37, 31210), (40, 31231), (45, 31285), (46, 31351), (58, 31744), (59, 31777), (64, 32023), (69, 32134), (81, 32338), (82, 32341), (84, 32398), (85, 32401), (87, 32413), (88, 32437), (89, 32455), (90, 32458), (91, 32470), (96, 32503), (98, 32545), (109, 32686), (110, 32740), (114, 32800), (115, 32809), (119, 32983), (121, 33088), (125, 33199), (128, 33220), (147, 33355), (149, 33397), (153, 33481),

Gene: Blackdragon_82 Start: 30678, Stop: 34388, Start Num: 1

Candidate Starts for Blackdragon_82:

(Start: 1 @30678 has 173 MA's), (3, 30759), (5, 30780), (6, 30804), (8, 30849), (9, 30876), (10, 30879), (11, 30891), (12, 30909), (13, 30912), (18, 31131), (20, 31269), (23, 31356), (25, 31404), (31, 31467), (33, 31497), (35, 31524), (37, 31533), (40, 31554), (45, 31608), (46, 31674), (58, 32067), (59, 32100), (62, 32220), (69, 32451), (81, 32655), (82, 32658), (84, 32715), (85, 32718), (87, 32730), (88, 32754), (89, 32772), (90, 32775), (91, 32787), (96, 32820), (98, 32862), (107, 32988), (108, 32991), (109, 33156), (114, 33273), (115, 33282), (119, 33456), (121, 33561), (125, 33672), (128, 33693), (134, 33816), (135, 33822), (138, 33864), (139, 33882), (147, 34026), (149, 34068), (153, 34173),

Gene: Blubba_77 Start: 28963, Stop: 32385, Start Num: 1

Candidate Starts for Blubba_77:

(Start: 1 @28963 has 173 MA's), (3, 29044), (5, 29065), (6, 29089), (8, 29134), (9, 29161), (10, 29164), (11, 29176), (12, 29194), (13, 29197), (18, 29416), (19, 29518), (40, 29551), (45, 29605), (46, 29671), (58, 30064), (59, 30097), (62, 30217), (69, 30448), (81, 30652), (82, 30655), (84, 30712), (85, 30715), (87, 30727), (88, 30751), (89, 30769), (90, 30772), (91, 30784), (96, 30817), (98, 30859), (107, 30985), (108, 30988), (109, 31153), (110, 31207), (114, 31270), (115, 31279), (119, 31453), (121, 31558), (125, 31669), (128, 31690), (134, 31813), (135, 31819), (138, 31861), (139, 31879), (147, 32023), (149, 32065), (153, 32170),

Gene: Bonray_88 Start: 32250, Stop: 35963, Start Num: 1

Candidate Starts for Bonray_88:

(Start: 1 @32250 has 173 MA's), (3, 32331), (5, 32352), (6, 32376), (9, 32448), (10, 32451), (11, 32463), (12, 32481), (13, 32484), (18, 32703), (20, 32841), (23, 32928), (25, 32976), (31, 33039), (33, 33069), (35, 33096), (37, 33105), (40, 33126), (45, 33180), (46, 33246), (58, 33639), (59, 33672), (62, 33792), (69, 34026), (81, 34230), (82, 34233), (84, 34290), (85, 34293), (87, 34305), (88, 34329), (89,

34347), (90, 34350), (91, 34362), (96, 34395), (98, 34437), (107, 34563), (108, 34566), (109, 34731), (110, 34785), (114, 34848), (115, 34857), (119, 35031), (121, 35136), (125, 35247), (128, 35268), (134, 35391), (135, 35397), (138, 35439), (139, 35457), (147, 35601), (149, 35643), (153, 35748),

Gene: Bread_88 Start: 31749, Stop: 35462, Start Num: 1

Candidate Starts for Bread_88:

(Start: 1 @31749 has 173 MA's), (3, 31830), (5, 31851), (6, 31875), (8, 31920), (9, 31947), (10, 31950), (11, 31962), (12, 31980), (13, 31983), (18, 32202), (20, 32340), (23, 32427), (25, 32475), (31, 32538), (33, 32568), (35, 32595), (37, 32604), (39, 32622), (40, 32625), (45, 32679), (46, 32745), (58, 33138), (59, 33171), (62, 33291), (69, 33525), (81, 33729), (82, 33732), (84, 33789), (85, 33792), (87, 33804), (88, 33828), (89, 33846), (90, 33849), (91, 33861), (96, 33894), (98, 33936), (107, 34062), (108, 34065), (109, 34230), (110, 34284), (114, 34347), (115, 34356), (119, 34530), (121, 34635), (125, 34746), (128, 34767), (134, 34890), (135, 34896), (138, 34938), (139, 34956), (147, 35100), (149, 35142), (153, 35247),

Gene: Breeniome_88 Start: 30975, Stop: 34685, Start Num: 1

Candidate Starts for Breeniome_88:

(Start: 1 @30975 has 173 MA's), (3, 31056), (5, 31077), (6, 31101), (8, 31146), (9, 31173), (10, 31176), (11, 31188), (12, 31206), (13, 31209), (18, 31428), (20, 31566), (23, 31653), (25, 31701), (31, 31764), (33, 31794), (35, 31821), (37, 31830), (40, 31851), (45, 31905), (46, 31971), (58, 32364), (59, 32397), (62, 32517), (69, 32748), (81, 32952), (82, 32955), (84, 33012), (85, 33015), (87, 33027), (88, 33051), (89, 33069), (90, 33072), (91, 33084), (96, 33117), (98, 33159), (107, 33285), (108, 33288), (109, 33453), (114, 33570), (115, 33579), (119, 33753), (121, 33858), (125, 33969), (128, 33990), (134, 34113), (135, 34119), (138, 34161), (139, 34179), (147, 34323), (149, 34365), (153, 34470),

Gene: Burrough_88 Start: 32406, Stop: 36119, Start Num: 1

Candidate Starts for Burrough_88:

(Start: 1 @32406 has 173 MA's), (3, 32487), (5, 32508), (6, 32532), (8, 32577), (9, 32604), (10, 32607), (11, 32619), (12, 32637), (13, 32640), (18, 32859), (20, 32997), (23, 33084), (25, 33132), (31, 33195), (33, 33225), (35, 33252), (37, 33261), (39, 33279), (40, 33282), (45, 33336), (46, 33402), (58, 33795), (59, 33828), (62, 33948), (69, 34182), (81, 34386), (82, 34389), (84, 34446), (85, 34449), (87, 34461), (88, 34485), (89, 34503), (90, 34506), (91, 34518), (96, 34551), (98, 34593), (107, 34719), (108, 34722), (109, 34887), (110, 34941), (114, 35004), (115, 35013), (119, 35187), (121, 35292), (125, 35403), (128, 35424), (134, 35547), (135, 35553), (138, 35595), (139, 35613), (147, 35757), (149, 35799), (153, 35904),

Gene: Bxz1_87 Start: 33457, Stop: 37170, Start Num: 1

Candidate Starts for Bxz1_87:

(Start: 1 @33457 has 173 MA's), (3, 33538), (5, 33559), (6, 33583), (8, 33628), (9, 33655), (10, 33658), (11, 33670), (12, 33688), (13, 33691), (18, 33910), (20, 34048), (23, 34135), (25, 34183), (31, 34246), (33, 34276), (35, 34303), (37, 34312), (39, 34330), (40, 34333), (45, 34387), (46, 34453), (58, 34846), (59, 34879), (62, 34999), (69, 35233), (81, 35437), (82, 35440), (84, 35497), (85, 35500), (87, 35512), (88, 35536), (89, 35554), (90, 35557), (91, 35569), (96, 35602), (98, 35644), (107, 35770), (108, 35773), (109, 35938), (110, 35992), (114, 36055), (115, 36064), (119, 36238), (121, 36343), (125, 36454), (128, 36475), (134, 36598), (135, 36604), (138, 36646), (139, 36664), (147, 36808), (149, 36850), (153, 36955),

Gene: Cactojaque_83 Start: 30462, Stop: 33803, Start Num: 1

Candidate Starts for Cactojaque_83:

(Start: 1 @30462 has 173 MA's), (3, 30543), (5, 30564), (6, 30588), (8, 30633), (9, 30660), (10, 30663), (11, 30675), (12, 30693), (13, 30696), (18, 30915), (20, 31053), (23, 31140), (25, 31188), (30, 31239), (31, 31251), (33, 31281), (35, 31308), (37, 31317), (40, 31338), (45, 31392), (46, 31458), (58, 31851), (59, 31884), (64, 32130), (69, 32241), (81, 32445), (82, 32448), (84, 32505), (85, 32508), (87, 32520),

(88, 32544), (89, 32562), (90, 32565), (91, 32577), (96, 32610), (98, 32652), (109, 32793), (110, 32847), (114, 32907), (115, 32916), (119, 33090), (121, 33195), (125, 33306), (128, 33327), (147, 33462), (149, 33504), (153, 33588),

Gene: Cali_83 Start: 31979, Stop: 35692, Start Num: 1

Candidate Starts for Cali_83:

(Start: 1 @31979 has 173 MA's), (3, 32060), (5, 32081), (6, 32105), (8, 32150), (9, 32177), (10, 32180), (11, 32192), (12, 32210), (13, 32213), (18, 32432), (20, 32570), (23, 32657), (25, 32705), (31, 32768), (33, 32798), (35, 32825), (37, 32834), (40, 32855), (45, 32909), (46, 32975), (58, 33368), (59, 33401), (62, 33521), (69, 33755), (81, 33959), (82, 33962), (84, 34019), (85, 34022), (87, 34034), (88, 34058), (89, 34076), (90, 34079), (91, 34091), (96, 34124), (98, 34166), (107, 34292), (108, 34295), (109, 34460), (114, 34577), (115, 34586), (119, 34760), (121, 34865), (125, 34976), (128, 34997), (134, 35120), (135, 35126), (138, 35168), (139, 35186), (147, 35330), (149, 35372), (153, 35477),

Gene: Cane17_76 Start: 28573, Stop: 31995, Start Num: 1

Candidate Starts for Cane17_76:

(Start: 1 @28573 has 173 MA's), (3, 28654), (5, 28675), (6, 28699), (8, 28744), (9, 28771), (10, 28774), (11, 28786), (12, 28804), (13, 28807), (18, 29026), (19, 29128), (40, 29161), (45, 29215), (46, 29281), (58, 29674), (59, 29707), (62, 29827), (69, 30058), (81, 30262), (82, 30265), (84, 30322), (85, 30325), (87, 30337), (88, 30361), (89, 30379), (90, 30382), (91, 30394), (96, 30427), (98, 30469), (107, 30595), (108, 30598), (109, 30763), (110, 30817), (114, 30880), (115, 30889), (119, 31063), (121, 31168), (125, 31279), (128, 31300), (134, 31423), (135, 31429), (138, 31471), (139, 31489), (147, 31633), (149, 31675), (153, 31780),

Gene: Capablanca_90 Start: 32276, Stop: 35989, Start Num: 1

Candidate Starts for Capablanca_90:

(Start: 1 @32276 has 173 MA's), (3, 32357), (5, 32378), (6, 32402), (8, 32447), (9, 32474), (10, 32477), (11, 32489), (12, 32507), (13, 32510), (18, 32729), (20, 32867), (23, 32954), (25, 33002), (31, 33065), (33, 33095), (35, 33122), (37, 33131), (39, 33149), (40, 33152), (45, 33206), (46, 33272), (58, 33665), (59, 33698), (62, 33818), (69, 34052), (81, 34256), (82, 34259), (84, 34316), (85, 34319), (87, 34331), (88, 34355), (89, 34373), (90, 34376), (91, 34388), (96, 34421), (98, 34463), (107, 34589), (108, 34592), (109, 34757), (110, 34811), (114, 34874), (115, 34883), (119, 35057), (121, 35162), (125, 35273), (128, 35294), (134, 35417), (135, 35423), (138, 35465), (139, 35483), (147, 35627), (149, 35669), (153, 35774),

Gene: Caravan_83 Start: 31801, Stop: 35514, Start Num: 1

Candidate Starts for Caravan_83:

(Start: 1 @31801 has 173 MA's), (3, 31882), (5, 31903), (6, 31927), (8, 31972), (9, 31999), (10, 32002), (11, 32014), (12, 32032), (13, 32035), (18, 32254), (20, 32392), (23, 32479), (25, 32527), (31, 32590), (33, 32620), (35, 32647), (37, 32656), (39, 32674), (40, 32677), (45, 32731), (46, 32797), (58, 33190), (59, 33223), (62, 33343), (69, 33577), (81, 33781), (82, 33784), (84, 33841), (85, 33844), (87, 33856), (88, 33880), (89, 33898), (90, 33901), (91, 33913), (96, 33946), (98, 33988), (107, 34114), (108, 34117), (109, 34282), (110, 34336), (114, 34399), (115, 34408), (119, 34582), (121, 34687), (125, 34798), (128, 34819), (134, 34942), (135, 34948), (138, 34990), (139, 35008), (147, 35152), (149, 35194), (153, 35299),

Gene: Catera_87 Start: 30602, Stop: 33964, Start Num: 1

Candidate Starts for Catera_87:

(Start: 1 @30602 has 173 MA's), (3, 30683), (5, 30704), (6, 30728), (8, 30773), (9, 30800), (10, 30803), (11, 30815), (12, 30833), (13, 30836), (18, 31055), (20, 31193), (23, 31280), (25, 31328), (31, 31391), (33, 31421), (35, 31448), (37, 31457), (40, 31478), (45, 31532), (46, 31598), (57, 31976), (58, 32012), (64, 32288), (69, 32399), (81, 32603), (82, 32606), (84, 32663), (85, 32666), (87, 32678), (88, 32702), (89, 32720), (90, 32723), (91, 32735), (96, 32768), (98, 32810), (109, 32951), (110, 33005), (114,

33068), (115, 33077), (119, 33251), (121, 33356), (125, 33467), (128, 33488), (147, 33623), (149, 33665), (153, 33749),

Gene: Chargie21_84 Start: 30538, Stop: 33879, Start Num: 1

Candidate Starts for Chargie21_84:

(Start: 1 @30538 has 173 MA's), (3, 30619), (5, 30640), (6, 30664), (8, 30709), (9, 30736), (10, 30739), (11, 30751), (12, 30769), (13, 30772), (18, 30991), (20, 31129), (23, 31216), (25, 31264), (31, 31327), (33, 31357), (35, 31384), (37, 31393), (40, 31414), (45, 31468), (46, 31534), (58, 31927), (59, 31960), (64, 32206), (69, 32317), (81, 32521), (82, 32524), (84, 32581), (85, 32584), (87, 32596), (88, 32620), (89, 32638), (90, 32641), (91, 32653), (96, 32686), (98, 32728), (109, 32869), (110, 32923), (114, 32983), (115, 32992), (119, 33166), (121, 33271), (125, 33382), (128, 33403), (147, 33538), (149, 33580), (153, 33664),

Gene: CharlieB_83 Start: 29977, Stop: 33690, Start Num: 1

Candidate Starts for CharlieB_83:

(Start: 1 @29977 has 173 MA's), (3, 30058), (5, 30079), (6, 30103), (8, 30148), (9, 30175), (10, 30178), (11, 30190), (12, 30208), (13, 30211), (18, 30430), (20, 30568), (23, 30655), (25, 30703), (31, 30766), (33, 30796), (35, 30823), (37, 30832), (40, 30853), (45, 30907), (46, 30973), (58, 31366), (59, 31399), (62, 31519), (69, 31753), (81, 31957), (82, 31960), (84, 32017), (85, 32020), (87, 32032), (88, 32056), (89, 32074), (90, 32077), (91, 32089), (96, 32122), (98, 32164), (107, 32290), (108, 32293), (109, 32458), (114, 32575), (115, 32584), (119, 32758), (121, 32863), (125, 32974), (128, 32995), (134, 33118), (135, 33124), (138, 33166), (139, 33184), (147, 33328), (149, 33370), (153, 33475),

Gene: ChaylaJr_83 Start: 30253, Stop: 33594, Start Num: 1

Candidate Starts for ChaylaJr_83:

(Start: 1 @30253 has 173 MA's), (3, 30334), (5, 30355), (6, 30379), (8, 30424), (9, 30451), (10, 30454), (11, 30466), (12, 30484), (13, 30487), (18, 30706), (20, 30844), (23, 30931), (25, 30979), (31, 31042), (33, 31072), (35, 31099), (37, 31108), (40, 31129), (45, 31183), (46, 31249), (58, 31642), (59, 31675), (64, 31921), (69, 32032), (81, 32236), (82, 32239), (84, 32296), (85, 32299), (87, 32311), (88, 32335), (89, 32353), (90, 32356), (91, 32368), (96, 32401), (98, 32443), (109, 32584), (110, 32638), (114, 32698), (115, 32707), (119, 32881), (121, 32986), (125, 33097), (128, 33118), (147, 33253), (149, 33295), (153, 33379),

Gene: CherryTomatoes_86 Start: 33329, Stop: 36184, Start Num: 22

Candidate Starts for CherryTomatoes_86:

(Start: 22 @33329 has 4 MA's), (26, 33410), (27, 33422), (34, 33500), (41, 33563), (42, 33572), (44, 33584), (47, 33647), (48, 33806), (49, 33812), (52, 33917), (69, 34412), (70, 34415), (71, 34448), (83, 34685), (85, 34709), (87, 34721), (94, 34802), (95, 34805), (99, 34856), (122, 35447), (123, 35453), (126, 35492), (127, 35495), (148, 35858), (150, 35927), (151, 35948), (152, 35987), (155, 36083), (156, 36098),

Gene: ChickenPhender_84 Start: 30586, Stop: 33927, Start Num: 1

Candidate Starts for ChickenPhender_84:

(Start: 1 @30586 has 173 MA's), (3, 30667), (5, 30688), (6, 30712), (8, 30757), (9, 30784), (10, 30787), (11, 30799), (12, 30817), (13, 30820), (18, 31039), (20, 31177), (23, 31264), (25, 31312), (31, 31375), (33, 31405), (35, 31432), (37, 31441), (40, 31462), (45, 31516), (46, 31582), (58, 31975), (59, 32008), (64, 32254), (69, 32365), (81, 32569), (82, 32572), (84, 32629), (85, 32632), (87, 32644), (88, 32668), (89, 32686), (90, 32689), (91, 32701), (96, 32734), (98, 32776), (109, 32917), (110, 32971), (114, 33031), (115, 33040), (119, 33214), (121, 33319), (125, 33430), (128, 33451), (147, 33586), (149, 33628), (153, 33712),

Gene: Chomp_87 Start: 31638, Stop: 35348, Start Num: 1

Candidate Starts for Chomp_87:

(Start: 1 @31638 has 173 MA's), (3, 31719), (5, 31740), (6, 31764), (8, 31809), (9, 31836), (10, 31839), (11, 31851), (12, 31869), (13, 31872), (18, 32091), (20, 32229), (23, 32316), (25, 32364), (31, 32427), (33, 32457), (35, 32484), (37, 32493), (40, 32514), (45, 32568), (46, 32634), (58, 33027), (59, 33060), (62, 33180), (69, 33411), (81, 33615), (82, 33618), (84, 33675), (85, 33678), (87, 33690), (88, 33714), (89, 33732), (90, 33735), (91, 33747), (96, 33780), (98, 33822), (107, 33948), (108, 33951), (109, 34116), (114, 34233), (115, 34242), (119, 34416), (121, 34521), (125, 34632), (128, 34653), (134, 34776), (135, 34782), (138, 34824), (139, 34842), (147, 34986), (149, 35028), (153, 35133),

Gene: CindyLou_89 Start: 31676, Stop: 35389, Start Num: 1

Candidate Starts for CindyLou_89:

(Start: 1 @31676 has 173 MA's), (3, 31757), (5, 31778), (6, 31802), (8, 31847), (9, 31874), (10, 31877), (11, 31889), (12, 31907), (13, 31910), (18, 32129), (20, 32267), (23, 32354), (25, 32402), (31, 32465), (33, 32495), (35, 32522), (37, 32531), (39, 32549), (40, 32552), (45, 32606), (46, 32672), (58, 33065), (59, 33098), (62, 33218), (69, 33452), (81, 33656), (82, 33659), (84, 33716), (85, 33719), (87, 33731), (88, 33755), (89, 33773), (90, 33776), (91, 33788), (96, 33821), (98, 33863), (107, 33989), (108, 33992), (109, 34157), (110, 34211), (114, 34274), (115, 34283), (119, 34457), (121, 34562), (125, 34673), (128, 34694), (134, 34817), (135, 34823), (138, 34865), (139, 34883), (147, 35027), (149, 35069), (153, 35174),

Gene: Colt_78 Start: 29635, Stop: 33057, Start Num: 1

Candidate Starts for Colt_78:

(Start: 1 @29635 has 173 MA's), (3, 29716), (5, 29737), (6, 29761), (8, 29806), (9, 29833), (10, 29836), (11, 29848), (12, 29866), (13, 29869), (18, 30088), (19, 30190), (40, 30223), (45, 30277), (46, 30343), (58, 30736), (59, 30769), (62, 30889), (69, 31120), (81, 31324), (82, 31327), (84, 31384), (85, 31387), (87, 31399), (88, 31423), (89, 31441), (90, 31444), (91, 31456), (96, 31489), (98, 31531), (107, 31657), (108, 31660), (109, 31825), (110, 31879), (114, 31942), (115, 31951), (119, 32125), (121, 32230), (125, 32341), (128, 32362), (134, 32485), (135, 32491), (138, 32533), (139, 32551), (147, 32695), (149, 32737), (153, 32842),

Gene: Concombre_95 Start: 34395, Stop: 38105, Start Num: 1

Candidate Starts for Concombre_95:

(Start: 1 @34395 has 173 MA's), (3, 34476), (5, 34497), (6, 34521), (8, 34566), (9, 34593), (10, 34596), (11, 34608), (12, 34626), (13, 34629), (18, 34848), (20, 34986), (23, 35073), (25, 35121), (31, 35184), (33, 35214), (35, 35241), (37, 35250), (40, 35271), (45, 35325), (46, 35391), (58, 35784), (59, 35817), (62, 35937), (69, 36168), (81, 36372), (82, 36375), (84, 36432), (85, 36435), (87, 36447), (88, 36471), (89, 36489), (90, 36492), (91, 36504), (96, 36537), (98, 36579), (107, 36705), (108, 36708), (109, 36873), (110, 36927), (114, 36990), (115, 36999), (119, 37173), (121, 37278), (125, 37389), (128, 37410), (134, 37533), (135, 37539), (138, 37581), (139, 37599), (147, 37743), (149, 37785), (153, 37890),

Gene: DTDevon_89 Start: 32315, Stop: 36025, Start Num: 1

Candidate Starts for DTDevon_89:

(Start: 1 @32315 has 173 MA's), (3, 32396), (5, 32417), (6, 32441), (8, 32486), (9, 32513), (10, 32516), (11, 32528), (12, 32546), (13, 32549), (18, 32768), (20, 32906), (23, 32993), (25, 33041), (31, 33104), (33, 33134), (35, 33161), (37, 33170), (40, 33191), (45, 33245), (46, 33311), (58, 33704), (59, 33737), (62, 33857), (69, 34088), (81, 34292), (82, 34295), (84, 34352), (85, 34355), (87, 34367), (88, 34391), (89, 34409), (90, 34412), (91, 34424), (96, 34457), (98, 34499), (107, 34625), (108, 34628), (109, 34793), (114, 34910), (115, 34919), (119, 35093), (121, 35198), (125, 35309), (128, 35330), (134, 35453), (135, 35459), (138, 35501), (139, 35519), (147, 35663), (149, 35705), (153, 35810),

Gene: Daffodil_93 Start: 32145, Stop: 35858, Start Num: 1

Candidate Starts for Daffodil_93:

(Start: 1 @32145 has 173 MA's), (3, 32226), (5, 32247), (6, 32271), (8, 32316), (9, 32343), (10, 32346), (11, 32358), (12, 32376), (13, 32379), (18, 32598), (20, 32736), (23, 32823), (25, 32871), (31, 32934), (33, 32964), (35, 32991), (37, 33000), (39, 33018), (40, 33021), (45, 33075), (46, 33141), (58, 33534), (59, 33567), (62, 33687), (69, 33921), (81, 34125), (82, 34128), (84, 34185), (85, 34188), (87, 34200), (88, 34224), (89, 34242), (90, 34245), (91, 34257), (96, 34290), (98, 34332), (107, 34458), (108, 34461), (109, 34626), (110, 34680), (114, 34743), (115, 34752), (119, 34926), (121, 35031), (125, 35142), (128, 35163), (134, 35286), (135, 35292), (138, 35334), (139, 35352), (147, 35496), (149, 35538), (153, 35643),

Gene: Dandelion_95 Start: 34817, Stop: 38551, Start Num: 1

Candidate Starts for Dandelion_95:

(Start: 1 @34817 has 173 MA's), (3, 34898), (5, 34919), (6, 34943), (8, 34988), (9, 35015), (10, 35018), (11, 35030), (12, 35048), (13, 35051), (18, 35270), (20, 35408), (23, 35495), (25, 35543), (31, 35606), (33, 35636), (35, 35663), (37, 35672), (40, 35693), (45, 35747), (46, 35813), (57, 36191), (58, 36227), (64, 36503), (69, 36614), (81, 36818), (82, 36821), (84, 36878), (85, 36881), (87, 36893), (88, 36917), (89, 36935), (90, 36938), (91, 36950), (96, 36983), (98, 37025), (107, 37151), (108, 37154), (109, 37319), (114, 37436), (115, 37445), (119, 37619), (121, 37724), (125, 37835), (128, 37856), (134, 37979), (135, 37985), (138, 38027), (139, 38045), (147, 38189), (149, 38231), (153, 38336),

Gene: Darko_88 Start: 32076, Stop: 35789, Start Num: 1

Candidate Starts for Darko_88:

(Start: 1 @32076 has 173 MA's), (3, 32157), (5, 32178), (6, 32202), (9, 32274), (10, 32277), (11, 32289), (12, 32307), (13, 32310), (18, 32529), (20, 32667), (23, 32754), (25, 32802), (31, 32865), (33, 32895), (35, 32922), (37, 32931), (40, 32952), (45, 33006), (46, 33072), (58, 33465), (59, 33498), (62, 33618), (69, 33852), (81, 34056), (82, 34059), (84, 34116), (85, 34119), (87, 34131), (88, 34155), (89, 34173), (90, 34176), (91, 34188), (96, 34221), (98, 34263), (107, 34389), (108, 34392), (109, 34557), (110, 34611), (114, 34674), (115, 34683), (119, 34857), (121, 34962), (125, 35073), (128, 35094), (134, 35217), (135, 35223), (138, 35265), (139, 35283), (147, 35427), (149, 35469), (153, 35574),

Gene: DeejaClivia_77 Start: 28393, Stop: 31731, Start Num: 1

Candidate Starts for DeejaClivia_77:

(Start: 1 @28393 has 173 MA's), (3, 28474), (5, 28495), (6, 28519), (8, 28564), (9, 28591), (10, 28594), (11, 28606), (12, 28624), (13, 28627), (18, 28846), (20, 28984), (23, 29071), (25, 29119), (31, 29182), (33, 29212), (35, 29239), (37, 29248), (39, 29266), (40, 29269), (45, 29323), (46, 29389), (58, 29782), (59, 29815), (62, 29935), (64, 30058), (69, 30169), (81, 30373), (82, 30376), (84, 30433), (85, 30436), (87, 30448), (88, 30472), (89, 30490), (90, 30493), (91, 30505), (96, 30538), (98, 30580), (109, 30721), (110, 30775), (114, 30835), (115, 30844), (119, 31018), (121, 31123), (125, 31234), (128, 31255), (147, 31390), (149, 31432), (153, 31516),

Gene: Delilah_88 Start: 32146, Stop: 35859, Start Num: 1

Candidate Starts for Delilah_88:

(Start: 1 @32146 has 173 MA's), (3, 32227), (5, 32248), (6, 32272), (8, 32317), (9, 32344), (10, 32347), (11, 32359), (12, 32377), (13, 32380), (18, 32599), (20, 32737), (23, 32824), (25, 32872), (31, 32935), (33, 32965), (35, 32992), (37, 33001), (39, 33019), (40, 33022), (45, 33076), (46, 33142), (58, 33535), (59, 33568), (62, 33688), (69, 33922), (81, 34126), (82, 34129), (84, 34186), (85, 34189), (87, 34201), (88, 34225), (89, 34243), (90, 34246), (91, 34258), (96, 34291), (98, 34333), (107, 34459), (108, 34462), (109, 34627), (110, 34681), (114, 34744), (115, 34753), (119, 34927), (121, 35032), (125, 35143), (128, 35164), (134, 35287), (135, 35293), (138, 35335), (139, 35353), (147, 35497), (149, 35539), (153, 35644),

Gene: Delylah_91 Start: 31939, Stop: 35652, Start Num: 1

Candidate Starts for Delylah_91:

(Start: 1 @31939 has 173 MA's), (3, 32020), (5, 32041), (6, 32065), (8, 32110), (9, 32137), (10, 32140), (11, 32152), (12, 32170), (13, 32173), (18, 32392), (20, 32530), (23, 32617), (25, 32665), (31, 32728), (33, 32758), (35, 32785), (37, 32794), (39, 32812), (40, 32815), (45, 32869), (46, 32935), (58, 33328), (59, 33361), (62, 33481), (69, 33715), (81, 33919), (82, 33922), (84, 33979), (85, 33982), (87, 33994), (88, 34018), (89, 34036), (90, 34039), (91, 34051), (96, 34084), (98, 34126), (107, 34252), (108, 34255), (109, 34420), (110, 34474), (114, 34537), (115, 34546), (119, 34720), (121, 34825), (125, 34936), (128, 34957), (134, 35080), (135, 35086), (138, 35128), (139, 35146), (147, 35290), (149, 35332), (153, 35437),

Gene: Demodog_95 Start: 34395, Stop: 38105, Start Num: 1

Candidate Starts for Demodog_95:

(Start: 1 @34395 has 173 MA's), (3, 34476), (5, 34497), (6, 34521), (8, 34566), (9, 34593), (10, 34596), (11, 34608), (12, 34626), (13, 34629), (18, 34848), (20, 34986), (23, 35073), (25, 35121), (31, 35184), (33, 35214), (35, 35241), (37, 35250), (40, 35271), (45, 35325), (46, 35391), (58, 35784), (59, 35817), (62, 35937), (69, 36168), (81, 36372), (82, 36375), (84, 36432), (85, 36435), (87, 36447), (88, 36471), (89, 36489), (90, 36492), (91, 36504), (96, 36537), (98, 36579), (107, 36705), (108, 36708), (109, 36873), (110, 36927), (114, 36990), (115, 36999), (119, 37173), (121, 37278), (125, 37389), (128, 37410), (134, 37533), (135, 37539), (138, 37581), (139, 37599), (147, 37743), (149, 37785), (153, 37890),

Gene: Derek_88 Start: 31440, Stop: 35150, Start Num: 1

Candidate Starts for Derek_88:

(Start: 1 @31440 has 173 MA's), (3, 31521), (5, 31542), (6, 31566), (8, 31611), (9, 31638), (10, 31641), (11, 31653), (12, 31671), (13, 31674), (18, 31893), (20, 32031), (23, 32118), (25, 32166), (31, 32229), (33, 32259), (35, 32286), (37, 32295), (40, 32316), (45, 32370), (46, 32436), (58, 32829), (59, 32862), (62, 32982), (69, 33213), (81, 33417), (82, 33420), (84, 33477), (85, 33480), (87, 33492), (88, 33516), (89, 33534), (90, 33537), (91, 33549), (96, 33582), (98, 33624), (107, 33750), (108, 33753), (109, 33918), (114, 34035), (115, 34044), (119, 34218), (121, 34323), (125, 34434), (128, 34455), (134, 34578), (135, 34584), (138, 34626), (139, 34644), (147, 34788), (149, 34830), (153, 34935),

Gene: Dietrick_80 Start: 30264, Stop: 33626, Start Num: 1

Candidate Starts for Dietrick_80:

(Start: 1 @30264 has 173 MA's), (3, 30345), (5, 30366), (6, 30390), (8, 30435), (9, 30462), (10, 30465), (11, 30477), (12, 30495), (13, 30498), (18, 30717), (20, 30855), (23, 30942), (25, 30990), (31, 31053), (33, 31083), (35, 31110), (37, 31119), (40, 31140), (45, 31194), (46, 31260), (57, 31638), (58, 31674), (64, 31950), (69, 32061), (81, 32265), (82, 32268), (84, 32325), (85, 32328), (87, 32340), (88, 32364), (89, 32382), (90, 32385), (91, 32397), (96, 32430), (98, 32472), (109, 32613), (110, 32667), (114, 32730), (115, 32739), (119, 32913), (121, 33018), (125, 33129), (128, 33150), (147, 33285), (149, 33327), (153, 33411),

Gene: DirtMonster_81 Start: 30741, Stop: 34451, Start Num: 1

Candidate Starts for DirtMonster_81:

(Start: 1 @30741 has 173 MA's), (3, 30822), (5, 30843), (6, 30867), (8, 30912), (9, 30939), (10, 30942), (11, 30954), (12, 30972), (13, 30975), (18, 31194), (20, 31332), (23, 31419), (25, 31467), (31, 31530), (33, 31560), (35, 31587), (37, 31596), (40, 31617), (45, 31671), (46, 31737), (58, 32130), (59, 32163), (62, 32283), (69, 32514), (81, 32718), (82, 32721), (84, 32778), (85, 32781), (87, 32793), (88, 32817), (89, 32835), (90, 32838), (91, 32850), (96, 32883), (98, 32925), (107, 33051), (108, 33054), (109, 33219), (110, 33273), (114, 33336), (115, 33345), (119, 33519), (121, 33624), (125, 33735), (128, 33756), (134, 33879), (135, 33885), (138, 33927), (139, 33945), (147, 34089), (149, 34131), (153, 34236),

Gene: Domi_82 Start: 31470, Stop: 35183, Start Num: 1

Candidate Starts for Domi_82:

(Start: 1 @31470 has 173 MA's), (3, 31551), (5, 31572), (6, 31596), (9, 31668), (10, 31671), (11, 31683), (12, 31701), (13, 31704), (18, 31923), (20, 32061), (23, 32148), (25, 32196), (31, 32259), (33, 32289), (35, 32316), (37, 32325), (40, 32346), (45, 32400), (46, 32466), (58, 32859), (59, 32892), (62, 33012), (69, 33246), (81, 33450), (82, 33453), (84, 33510), (85, 33513), (87, 33525), (88, 33549), (89, 33567), (90, 33570), (91, 33582), (96, 33615), (98, 33657), (107, 33783), (108, 33786), (109, 33951), (110, 34005), (114, 34068), (115, 34077), (119, 34251), (121, 34356), (125, 34467), (128, 34488), (134, 34611), (135, 34617), (138, 34659), (139, 34677), (147, 34821), (149, 34863), (153, 34968),

Gene: DrPhinkDaddy_87 Start: 32201, Stop: 35914, Start Num: 1

Candidate Starts for DrPhinkDaddy_87:

(Start: 1 @32201 has 173 MA's), (3, 32282), (5, 32303), (6, 32327), (8, 32372), (9, 32399), (10, 32402), (11, 32414), (12, 32432), (13, 32435), (18, 32654), (20, 32792), (23, 32879), (25, 32927), (31, 32990), (33, 33020), (35, 33047), (37, 33056), (39, 33074), (40, 33077), (45, 33131), (46, 33197), (58, 33590), (59, 33623), (62, 33743), (69, 33977), (81, 34181), (82, 34184), (84, 34241), (85, 34244), (87, 34256), (88, 34280), (89, 34298), (90, 34301), (91, 34313), (96, 34346), (98, 34388), (107, 34514), (108, 34517), (109, 34682), (110, 34736), (114, 34799), (115, 34808), (119, 34982), (121, 35087), (125, 35198), (128, 35219), (134, 35342), (135, 35348), (138, 35390), (139, 35408), (147, 35552), (149, 35594), (153, 35699),

Gene: Drazdys_88 Start: 31946, Stop: 35656, Start Num: 1

Candidate Starts for Drazdys_88:

(Start: 1 @31946 has 173 MA's), (3, 32027), (5, 32048), (6, 32072), (8, 32117), (9, 32144), (10, 32147), (11, 32159), (12, 32177), (13, 32180), (18, 32399), (20, 32537), (23, 32624), (25, 32672), (31, 32735), (33, 32765), (35, 32792), (37, 32801), (40, 32822), (45, 32876), (46, 32942), (58, 33335), (59, 33368), (62, 33488), (69, 33719), (81, 33923), (82, 33926), (84, 33983), (85, 33986), (87, 33998), (88, 34022), (89, 34040), (90, 34043), (91, 34055), (96, 34088), (98, 34130), (107, 34256), (108, 34259), (109, 34424), (114, 34541), (115, 34550), (119, 34724), (121, 34829), (125, 34940), (128, 34961), (134, 35084), (135, 35090), (138, 35132), (139, 35150), (147, 35294), (149, 35336), (153, 35441),

Gene: ET08_77 Start: 29845, Stop: 33558, Start Num: 1

Candidate Starts for ET08_77:

(Start: 1 @29845 has 173 MA's), (3, 29926), (5, 29947), (6, 29971), (8, 30016), (9, 30043), (10, 30046), (11, 30058), (12, 30076), (13, 30079), (18, 30298), (20, 30436), (23, 30523), (25, 30571), (31, 30634), (33, 30664), (35, 30691), (37, 30700), (40, 30721), (45, 30775), (46, 30841), (58, 31234), (59, 31267), (62, 31387), (69, 31621), (81, 31825), (82, 31828), (84, 31885), (85, 31888), (87, 31900), (88, 31924), (89, 31942), (90, 31945), (91, 31957), (96, 31990), (98, 32032), (107, 32158), (108, 32161), (109, 32326), (114, 32443), (115, 32452), (119, 32626), (121, 32731), (125, 32842), (128, 32863), (134, 32986), (135, 32992), (138, 33034), (139, 33052), (147, 33196), (149, 33238), (153, 33343),

Gene: EasyJones_91 Start: 31645, Stop: 34986, Start Num: 1

Candidate Starts for EasyJones_91:

(Start: 1 @31645 has 173 MA's), (3, 31726), (5, 31747), (6, 31771), (8, 31816), (9, 31843), (10, 31846), (11, 31858), (12, 31876), (13, 31879), (18, 32098), (20, 32236), (23, 32323), (25, 32371), (31, 32434), (33, 32464), (35, 32491), (37, 32500), (40, 32521), (45, 32575), (46, 32641), (58, 33034), (59, 33067), (64, 33313), (69, 33424), (81, 33628), (82, 33631), (84, 33688), (85, 33691), (87, 33703), (88, 33727), (89, 33745), (90, 33748), (91, 33760), (96, 33793), (98, 33835), (109, 33976), (110, 34030), (114, 34090), (115, 34099), (119, 34273), (121, 34378), (125, 34489), (128, 34510), (147, 34645), (149, 34687), (153, 34771),

Gene: EggyFarm_96 Start: 34232, Stop: 37912, Start Num: 1

Candidate Starts for EggyFarm_96:

(Start: 1 @34232 has 173 MA's), (3, 34313), (5, 34334), (6, 34358), (8, 34403), (9, 34430), (10, 34433), (11, 34445), (12, 34463), (13, 34466), (18, 34685), (19, 34787), (40, 34820), (45, 34874), (46, 34940),

(58, 35333), (59, 35366), (62, 35486), (69, 35717), (81, 35921), (82, 35924), (84, 35981), (85, 35984), (87, 35996), (88, 36020), (89, 36038), (90, 36041), (91, 36053), (96, 36086), (98, 36128), (107, 36254), (108, 36257), (109, 36422), (114, 36539), (115, 36548), (119, 36722), (121, 36827), (125, 36938), (128, 36959), (134, 37082), (135, 37088), (138, 37130), (139, 37148), (145, 37409), (146, 37469), (147, 37550), (149, 37592), (153, 37697),

Gene: EmToTheThree_91 Start: 33618, Stop: 37310, Start Num: 1

Candidate Starts for EmToTheThree_91:

(Start: 1 @33618 has 173 MA's), (3, 33699), (5, 33720), (6, 33744), (8, 33789), (9, 33816), (10, 33819), (11, 33831), (12, 33849), (13, 33852), (18, 34071), (20, 34209), (23, 34296), (25, 34344), (31, 34407), (33, 34437), (35, 34464), (37, 34473), (40, 34494), (45, 34548), (46, 34614), (58, 35007), (59, 35040), (62, 35160), (69, 35394), (81, 35598), (82, 35601), (84, 35658), (85, 35661), (87, 35673), (88, 35697), (89, 35715), (90, 35718), (91, 35730), (96, 35763), (98, 35805), (107, 35931), (108, 35934), (109, 36099), (114, 36216), (115, 36225), (119, 36399), (121, 36504), (125, 36615), (128, 36636), (134, 36759), (135, 36765), (138, 36807), (139, 36825), (147, 36969), (149, 37011), (153, 37095),

Gene: EmmaElysia_87 Start: 30721, Stop: 34431, Start Num: 1

Candidate Starts for EmmaElysia_87:

(Start: 1 @30721 has 173 MA's), (3, 30802), (5, 30823), (6, 30847), (8, 30892), (9, 30919), (10, 30922), (11, 30934), (12, 30952), (13, 30955), (18, 31174), (20, 31312), (23, 31399), (25, 31447), (31, 31510), (33, 31540), (35, 31567), (37, 31576), (40, 31597), (45, 31651), (46, 31717), (58, 32110), (59, 32143), (62, 32263), (69, 32494), (81, 32698), (82, 32701), (84, 32758), (85, 32761), (87, 32773), (88, 32797), (89, 32815), (90, 32818), (91, 32830), (96, 32863), (98, 32905), (107, 33031), (108, 33034), (109, 33199), (114, 33316), (115, 33325), (119, 33499), (121, 33604), (125, 33715), (128, 33736), (134, 33859), (135, 33865), (138, 33907), (139, 33925), (147, 34069), (149, 34111), (153, 34216),

Gene: Erdmann_89 Start: 32146, Stop: 35859, Start Num: 1

Candidate Starts for Erdmann_89:

(Start: 1 @32146 has 173 MA's), (3, 32227), (5, 32248), (6, 32272), (8, 32317), (9, 32344), (10, 32347), (11, 32359), (12, 32377), (13, 32380), (18, 32599), (20, 32737), (23, 32824), (25, 32872), (31, 32935), (33, 32965), (35, 32992), (37, 33001), (39, 33019), (40, 33022), (45, 33076), (46, 33142), (58, 33535), (59, 33568), (62, 33688), (69, 33922), (81, 34126), (82, 34129), (84, 34186), (85, 34189), (87, 34201), (88, 34225), (89, 34243), (90, 34246), (91, 34258), (96, 34291), (98, 34333), (107, 34459), (108, 34462), (109, 34627), (110, 34681), (114, 34744), (115, 34753), (119, 34927), (121, 35032), (125, 35143), (128, 35164), (134, 35287), (135, 35293), (138, 35335), (139, 35353), (147, 35497), (149, 35539), (153, 35644),

Gene: ErnieJ_84 Start: 30542, Stop: 33904, Start Num: 1

Candidate Starts for ErnieJ_84:

(Start: 1 @30542 has 173 MA's), (3, 30623), (5, 30644), (6, 30668), (8, 30713), (9, 30740), (10, 30743), (11, 30755), (12, 30773), (13, 30776), (18, 30995), (20, 31133), (23, 31220), (25, 31268), (31, 31331), (33, 31361), (35, 31388), (37, 31397), (40, 31418), (45, 31472), (46, 31538), (57, 31916), (58, 31952), (64, 32228), (69, 32339), (81, 32543), (82, 32546), (84, 32603), (85, 32606), (87, 32618), (88, 32642), (89, 32660), (90, 32663), (91, 32675), (96, 32708), (98, 32750), (109, 32891), (110, 32945), (114, 33008), (115, 33017), (119, 33191), (121, 33296), (125, 33407), (128, 33428), (147, 33563), (149, 33605), (153, 33689),

Gene: Essence_85 Start: 30901, Stop: 34614, Start Num: 1

Candidate Starts for Essence_85:

(Start: 1 @30901 has 173 MA's), (3, 30982), (5, 31003), (6, 31027), (8, 31072), (9, 31099), (10, 31102), (11, 31114), (12, 31132), (13, 31135), (18, 31354), (20, 31492), (23, 31579), (25, 31627), (31, 31690), (33, 31720), (35, 31747), (37, 31756), (39, 31774), (40, 31777), (45, 31831), (46, 31897), (58, 32290), (59, 32323), (62, 32443), (69, 32677), (81, 32881), (82, 32884), (84, 32941), (85, 32944), (87, 32956),

(88, 32980), (89, 32998), (90, 33001), (91, 33013), (96, 33046), (98, 33088), (107, 33214), (108, 33217), (109, 33382), (110, 33436), (114, 33499), (115, 33508), (119, 33682), (121, 33787), (125, 33898), (128, 33919), (134, 34042), (135, 34048), (138, 34090), (139, 34108), (147, 34252), (149, 34294), (153, 34399),

Gene: Ewok_89 Start: 32148, Stop: 35486, Start Num: 1

Candidate Starts for Ewok_89:

(Start: 1 @32148 has 173 MA's), (3, 32229), (5, 32250), (6, 32274), (8, 32319), (9, 32346), (10, 32349), (11, 32361), (12, 32379), (13, 32382), (18, 32601), (20, 32739), (23, 32826), (25, 32874), (31, 32937), (33, 32967), (35, 32994), (37, 33003), (39, 33021), (40, 33024), (45, 33078), (46, 33144), (58, 33537), (59, 33570), (62, 33690), (69, 33921), (81, 34125), (82, 34128), (84, 34185), (85, 34188), (87, 34200), (88, 34224), (89, 34242), (90, 34245), (91, 34257), (96, 34290), (98, 34332), (109, 34473), (110, 34527), (114, 34590), (115, 34599), (119, 34773), (121, 34878), (125, 34989), (128, 35010), (147, 35145), (149, 35187), (153, 35271),

Gene: Flabslab_83 Start: 30323, Stop: 33664, Start Num: 1

Candidate Starts for Flabslab_83:

(Start: 1 @30323 has 173 MA's), (3, 30404), (5, 30425), (6, 30449), (8, 30494), (9, 30521), (10, 30524), (11, 30536), (12, 30554), (13, 30557), (18, 30776), (20, 30914), (23, 31001), (25, 31049), (31, 31112), (33, 31142), (35, 31169), (37, 31178), (40, 31199), (45, 31253), (46, 31319), (58, 31712), (59, 31745), (64, 31991), (69, 32102), (81, 32306), (82, 32309), (84, 32366), (85, 32369), (87, 32381), (88, 32405), (89, 32423), (90, 32426), (91, 32438), (96, 32471), (98, 32513), (109, 32654), (110, 32708), (114, 32768), (115, 32777), (119, 32951), (121, 33056), (125, 33167), (128, 33188), (147, 33323), (149, 33365), (153, 33449),

Gene: Fludd_88 Start: 30985, Stop: 34326, Start Num: 1

Candidate Starts for Fludd_88:

(Start: 1 @30985 has 173 MA's), (3, 31066), (5, 31087), (6, 31111), (8, 31156), (9, 31183), (10, 31186), (11, 31198), (12, 31216), (13, 31219), (18, 31438), (20, 31576), (23, 31663), (25, 31711), (31, 31774), (33, 31804), (35, 31831), (37, 31840), (40, 31861), (45, 31915), (46, 31981), (58, 32374), (59, 32407), (64, 32653), (69, 32764), (81, 32968), (82, 32971), (84, 33028), (85, 33031), (87, 33043), (88, 33067), (89, 33085), (90, 33088), (91, 33100), (96, 33133), (98, 33175), (109, 33316), (110, 33370), (114, 33430), (115, 33439), (119, 33613), (121, 33718), (125, 33829), (128, 33850), (147, 33985), (149, 34027), (153, 34111),

Gene: Fongie_86 Start: 32361, Stop: 35699, Start Num: 1

Candidate Starts for Fongie_86:

(Start: 1 @32361 has 173 MA's), (3, 32442), (5, 32463), (6, 32487), (8, 32532), (9, 32559), (10, 32562), (11, 32574), (12, 32592), (13, 32595), (18, 32814), (20, 32952), (23, 33039), (25, 33087), (31, 33150), (33, 33180), (35, 33207), (37, 33216), (39, 33234), (40, 33237), (45, 33291), (46, 33357), (58, 33750), (59, 33783), (62, 33903), (69, 34134), (81, 34338), (82, 34341), (84, 34398), (85, 34401), (87, 34413), (88, 34437), (89, 34455), (90, 34458), (91, 34470), (96, 34503), (98, 34545), (109, 34686), (110, 34740), (114, 34803), (115, 34812), (119, 34986), (121, 35091), (125, 35202), (128, 35223), (147, 35358), (149, 35400), (153, 35484),

Gene: FoxtrotP1_88 Start: 32548, Stop: 36258, Start Num: 1

Candidate Starts for FoxtrotP1_88:

(Start: 1 @32548 has 173 MA's), (3, 32629), (5, 32650), (6, 32674), (8, 32719), (9, 32746), (10, 32749), (11, 32761), (12, 32779), (13, 32782), (18, 33001), (20, 33139), (23, 33226), (25, 33274), (31, 33337), (33, 33367), (35, 33394), (37, 33403), (40, 33424), (45, 33478), (46, 33544), (58, 33937), (59, 33970), (62, 34090), (69, 34321), (81, 34525), (82, 34528), (84, 34585), (85, 34588), (87, 34600), (88, 34624), (89, 34642), (90, 34645), (91, 34657), (96, 34690), (98, 34732), (107, 34858), (108, 34861), (109, 35026), (110, 35080), (114, 35143), (115, 35152), (119, 35326), (121, 35431), (125, 35542), (128,

35563), (134, 35686), (135, 35692), (138, 35734), (139, 35752), (147, 35896), (149, 35938), (153, 36043),

Gene: FrayBell_94 Start: 33591, Stop: 37304, Start Num: 1

Candidate Starts for FrayBell_94:

(Start: 1 @33591 has 173 MA's), (3, 33672), (5, 33693), (6, 33717), (9, 33789), (10, 33792), (11, 33804), (12, 33822), (13, 33825), (18, 34044), (20, 34182), (23, 34269), (25, 34317), (31, 34380), (33, 34410), (35, 34437), (37, 34446), (40, 34467), (45, 34521), (46, 34587), (58, 34980), (59, 35013), (62, 35133), (69, 35367), (81, 35571), (82, 35574), (84, 35631), (85, 35634), (87, 35646), (88, 35670), (89, 35688), (90, 35691), (91, 35703), (96, 35736), (98, 35778), (107, 35904), (108, 35907), (109, 36072), (110, 36126), (114, 36189), (115, 36198), (119, 36372), (121, 36477), (125, 36588), (128, 36609), (134, 36732), (135, 36738), (138, 36780), (139, 36798), (147, 36942), (149, 36984), (153, 37089),

Gene: FudgeTart_88 Start: 31314, Stop: 35048, Start Num: 1

Candidate Starts for FudgeTart_88:

(Start: 1 @31314 has 173 MA's), (3, 31395), (5, 31416), (6, 31440), (8, 31485), (9, 31512), (10, 31515), (11, 31527), (12, 31545), (13, 31548), (18, 31767), (20, 31905), (23, 31992), (25, 32040), (31, 32103), (33, 32133), (35, 32160), (37, 32169), (40, 32190), (45, 32244), (46, 32310), (57, 32688), (58, 32724), (64, 33000), (69, 33111), (81, 33315), (82, 33318), (84, 33375), (85, 33378), (87, 33390), (88, 33414), (89, 33432), (90, 33435), (91, 33447), (96, 33480), (98, 33522), (107, 33648), (108, 33651), (109, 33816), (114, 33933), (115, 33942), (119, 34116), (121, 34221), (125, 34332), (128, 34353), (134, 34476), (135, 34482), (138, 34524), (139, 34542), (147, 34686), (149, 34728), (153, 34833),

Gene: Gabriel_90 Start: 31384, Stop: 35094, Start Num: 1

Candidate Starts for Gabriel_90:

(Start: 1 @31384 has 173 MA's), (3, 31465), (5, 31486), (6, 31510), (8, 31555), (9, 31582), (10, 31585), (11, 31597), (12, 31615), (13, 31618), (18, 31837), (20, 31975), (23, 32062), (25, 32110), (31, 32173), (33, 32203), (35, 32230), (37, 32239), (40, 32260), (45, 32314), (46, 32380), (58, 32773), (59, 32806), (62, 32926), (69, 33157), (81, 33361), (82, 33364), (84, 33421), (85, 33424), (87, 33436), (88, 33460), (89, 33478), (90, 33481), (91, 33493), (96, 33526), (98, 33568), (107, 33694), (108, 33697), (109, 33862), (114, 33979), (115, 33988), (119, 34162), (121, 34267), (125, 34378), (128, 34399), (134, 34522), (135, 34528), (138, 34570), (139, 34588), (147, 34732), (149, 34774), (153, 34879),

Gene: Gamgam_88 Start: 31151, Stop: 34864, Start Num: 1

Candidate Starts for Gamgam_88:

(Start: 1 @31151 has 173 MA's), (3, 31232), (5, 31253), (6, 31277), (8, 31322), (9, 31349), (10, 31352), (11, 31364), (12, 31382), (13, 31385), (18, 31604), (20, 31742), (23, 31829), (25, 31877), (31, 31940), (33, 31970), (35, 31997), (37, 32006), (39, 32024), (40, 32027), (45, 32081), (46, 32147), (58, 32540), (59, 32573), (62, 32693), (69, 32927), (81, 33131), (82, 33134), (84, 33191), (85, 33194), (87, 33206), (88, 33230), (89, 33248), (90, 33251), (91, 33263), (96, 33296), (98, 33338), (107, 33464), (108, 33467), (109, 33632), (110, 33686), (114, 33749), (115, 33758), (119, 33932), (121, 34037), (125, 34148), (128, 34169), (134, 34292), (135, 34298), (138, 34340), (139, 34358), (147, 34502), (149, 34544), (153, 34649),

Gene: Ghost_87 Start: 31151, Stop: 34864, Start Num: 1

Candidate Starts for Ghost_87:

(Start: 1 @31151 has 173 MA's), (3, 31232), (5, 31253), (6, 31277), (8, 31322), (9, 31349), (10, 31352), (11, 31364), (12, 31382), (13, 31385), (18, 31604), (20, 31742), (23, 31829), (25, 31877), (31, 31940), (33, 31970), (35, 31997), (37, 32006), (39, 32024), (40, 32027), (45, 32081), (46, 32147), (58, 32540), (59, 32573), (62, 32693), (69, 32927), (81, 33131), (82, 33134), (84, 33191), (85, 33194), (87, 33206), (88, 33230), (89, 33248), (90, 33251), (91, 33263), (96, 33296), (98, 33338), (107, 33464), (108, 33467), (109, 33632), (110, 33686), (114, 33749), (115, 33758), (119, 33932), (121, 34037), (125, 34148), (128, 34169), (134, 34292), (135, 34298), (138, 34340), (139, 34358), (147, 34502), (149,

34544), (153, 34649),

Gene: Gizmo_92 Start: 31829, Stop: 35167, Start Num: 1

Candidate Starts for Gizmo_92:

(Start: 1 @31829 has 173 MA's), (3, 31910), (5, 31931), (6, 31955), (8, 32000), (9, 32027), (10, 32030), (11, 32042), (12, 32060), (13, 32063), (18, 32282), (20, 32420), (23, 32507), (25, 32555), (31, 32618), (33, 32648), (35, 32675), (37, 32684), (39, 32702), (40, 32705), (45, 32759), (46, 32825), (58, 33218), (59, 33251), (62, 33371), (69, 33602), (81, 33806), (82, 33809), (84, 33866), (85, 33869), (87, 33881), (88, 33905), (89, 33923), (90, 33926), (91, 33938), (96, 33971), (98, 34013), (109, 34154), (110, 34208), (114, 34271), (115, 34280), (119, 34454), (121, 34559), (125, 34670), (128, 34691), (147, 34826), (149, 34868), (153, 34952),

Gene: GlutenPhree_86 Start: 31151, Stop: 34864, Start Num: 1

Candidate Starts for GlutenPhree_86:

(Start: 1 @31151 has 173 MA's), (3, 31232), (5, 31253), (6, 31277), (8, 31322), (9, 31349), (10, 31352), (11, 31364), (12, 31382), (13, 31385), (18, 31604), (20, 31742), (23, 31829), (25, 31877), (31, 31940), (33, 31970), (35, 31997), (37, 32006), (39, 32024), (40, 32027), (45, 32081), (46, 32147), (58, 32540), (59, 32573), (62, 32693), (69, 32927), (81, 33131), (82, 33134), (84, 33191), (85, 33194), (87, 33206), (88, 33230), (89, 33248), (90, 33251), (91, 33263), (96, 33296), (98, 33338), (107, 33464), (108, 33467), (109, 33632), (110, 33686), (114, 33749), (115, 33758), (119, 33932), (121, 34037), (125, 34148), (128, 34169), (134, 34292), (135, 34298), (138, 34340), (139, 34358), (147, 34502), (149, 34544), (153, 34649),

Gene: Grasshills_95 Start: 34232, Stop: 37912, Start Num: 1

Candidate Starts for Grasshills_95:

(Start: 1 @34232 has 173 MA's), (3, 34313), (5, 34334), (6, 34358), (8, 34403), (9, 34430), (10, 34433), (11, 34445), (12, 34463), (13, 34466), (18, 34685), (19, 34787), (40, 34820), (45, 34874), (46, 34940), (58, 35333), (59, 35366), (62, 35486), (69, 35717), (81, 35921), (82, 35924), (84, 35981), (85, 35984), (87, 35996), (88, 36020), (89, 36038), (90, 36041), (91, 36053), (96, 36086), (98, 36128), (107, 36254), (108, 36257), (109, 36422), (114, 36539), (115, 36548), (119, 36722), (121, 36827), (125, 36938), (128, 36959), (134, 37082), (135, 37088), (138, 37130), (139, 37148), (145, 37409), (146, 37469), (147, 37550), (149, 37592), (153, 37697),

Gene: Greely_89 Start: 33330, Stop: 36788, Start Num: 2

Candidate Starts for Greely_89:

(Start: 2 @33330 has 2 MA's), (7, 33459), (9, 33528), (13, 33564), (14, 33585), (15, 33600), (17, 33735), (23, 33882), (24, 33918), (36, 34053), (37, 34059), (55, 34560), (56, 34563), (59, 34659), (63, 34791), (66, 34881), (68, 34929), (70, 34941), (74, 35049), (75, 35070), (87, 35340), (88, 35364), (92, 35403), (96, 35430), (97, 35448), (98, 35472), (101, 35493), (103, 35508), (111, 35805), (113, 35844), (120, 36060), (121, 36126), (123, 36204), (124, 36228), (125, 36240), (127, 36246), (136, 36390), (152, 36582),

Gene: Grungle_75 Start: 28529, Stop: 32242, Start Num: 1

Candidate Starts for Grungle_75:

(Start: 1 @28529 has 173 MA's), (3, 28610), (5, 28631), (6, 28655), (8, 28700), (9, 28727), (10, 28730), (11, 28742), (12, 28760), (13, 28763), (18, 28982), (20, 29120), (23, 29207), (25, 29255), (31, 29318), (33, 29348), (35, 29375), (37, 29384), (40, 29405), (45, 29459), (46, 29525), (58, 29918), (59, 29951), (62, 30071), (69, 30305), (81, 30509), (82, 30512), (84, 30569), (85, 30572), (87, 30584), (88, 30608), (89, 30626), (90, 30629), (91, 30641), (96, 30674), (98, 30716), (107, 30842), (108, 30845), (109, 31010), (114, 31127), (115, 31136), (119, 31310), (121, 31415), (125, 31526), (128, 31547), (134, 31670), (135, 31676), (138, 31718), (139, 31736), (147, 31880), (149, 31922), (153, 32027),

Gene: Guwapp_87 Start: 31246, Stop: 34959, Start Num: 1

Candidate Starts for Guwapp_87:

(Start: 1 @31246 has 173 MA's), (3, 31327), (5, 31348), (6, 31372), (8, 31417), (9, 31444), (10, 31447), (11, 31459), (12, 31477), (13, 31480), (18, 31699), (20, 31837), (23, 31924), (25, 31972), (31, 32035), (33, 32065), (35, 32092), (37, 32101), (39, 32119), (40, 32122), (45, 32176), (46, 32242), (58, 32635), (59, 32668), (62, 32788), (69, 33022), (81, 33226), (82, 33229), (84, 33286), (85, 33289), (87, 33301), (88, 33325), (89, 33343), (90, 33346), (91, 33358), (96, 33391), (98, 33433), (107, 33559), (108, 33562), (109, 33727), (114, 33844), (115, 33853), (119, 34027), (121, 34132), (125, 34243), (128, 34264), (134, 34387), (135, 34393), (138, 34435), (139, 34453), (147, 34597), (149, 34639), (153, 34744),

Gene: Halldule_81 Start: 29559, Stop: 33272, Start Num: 1

Candidate Starts for Halldule_81:

(Start: 1 @29559 has 173 MA's), (3, 29640), (5, 29661), (6, 29685), (8, 29730), (9, 29757), (10, 29760), (11, 29772), (12, 29790), (13, 29793), (18, 30012), (20, 30150), (23, 30237), (25, 30285), (31, 30348), (33, 30378), (35, 30405), (37, 30414), (40, 30435), (45, 30489), (46, 30555), (58, 30948), (59, 30981), (62, 31101), (69, 31335), (81, 31539), (82, 31542), (84, 31599), (85, 31602), (87, 31614), (88, 31638), (89, 31656), (90, 31659), (91, 31671), (96, 31704), (98, 31746), (107, 31872), (108, 31875), (109, 32040), (114, 32157), (115, 32166), (119, 32340), (121, 32445), (125, 32556), (128, 32577), (134, 32700), (135, 32706), (138, 32748), (139, 32766), (147, 32910), (149, 32952), (153, 33057),

Gene: HyRo_80 Start: 30714, Stop: 34055, Start Num: 1

Candidate Starts for HyRo_80:

(Start: 1 @30714 has 173 MA's), (3, 30795), (5, 30816), (6, 30840), (8, 30885), (9, 30912), (10, 30915), (11, 30927), (12, 30945), (13, 30948), (18, 31167), (20, 31305), (23, 31392), (25, 31440), (31, 31503), (33, 31533), (35, 31560), (37, 31569), (39, 31587), (40, 31590), (45, 31644), (46, 31710), (58, 32103), (59, 32136), (62, 32256), (64, 32379), (69, 32490), (81, 32694), (82, 32697), (84, 32754), (85, 32757), (87, 32769), (88, 32793), (89, 32811), (90, 32814), (91, 32826), (96, 32859), (98, 32901), (109, 33042), (110, 33096), (114, 33159), (115, 33168), (119, 33342), (121, 33447), (125, 33558), (128, 33579), (147, 33714), (149, 33756), (153, 33840),

Gene: I3_94 Start: 32313, Stop: 35822, Start Num: 1

Candidate Starts for I3_94:

(Start: 1 @32313 has 173 MA's), (3, 32394), (5, 32415), (6, 32439), (9, 32511), (10, 32514), (11, 32526), (12, 32544), (13, 32547), (18, 32766), (20, 32904), (23, 32991), (25, 33039), (31, 33102), (33, 33132), (35, 33159), (37, 33168), (40, 33189), (45, 33243), (46, 33309), (58, 33702), (59, 33735), (62, 33855), (69, 34086), (81, 34290), (82, 34293), (84, 34350), (85, 34353), (87, 34365), (88, 34389), (89, 34407), (90, 34410), (91, 34422), (96, 34455), (98, 34497), (107, 34623), (109, 34791), (110, 34845), (114, 34905), (115, 34914), (119, 35088), (121, 35193), (125, 35304), (128, 35325), (147, 35460), (149, 35502), (153, 35607),

Gene: IkeLoa_82 Start: 30507, Stop: 34220, Start Num: 1

Candidate Starts for IkeLoa_82:

(Start: 1 @30507 has 173 MA's), (3, 30588), (5, 30609), (6, 30633), (9, 30705), (10, 30708), (11, 30720), (12, 30738), (13, 30741), (18, 30960), (20, 31098), (23, 31185), (25, 31233), (31, 31296), (33, 31326), (35, 31353), (37, 31362), (40, 31383), (45, 31437), (46, 31503), (58, 31896), (59, 31929), (62, 32049), (69, 32283), (81, 32487), (82, 32490), (84, 32547), (85, 32550), (87, 32562), (88, 32586), (89, 32604), (90, 32607), (91, 32619), (96, 32652), (98, 32694), (107, 32820), (108, 32823), (109, 32988), (110, 33042), (114, 33105), (115, 33114), (119, 33288), (121, 33393), (125, 33504), (128, 33525), (134, 33648), (135, 33654), (138, 33696), (139, 33714), (147, 33858), (149, 33900), (153, 34005),

Gene: InigoMontoya_89 Start: 31112, Stop: 34825, Start Num: 1

Candidate Starts for InigoMontoya_89:

(Start: 1 @31112 has 173 MA's), (3, 31193), (5, 31214), (6, 31238), (8, 31283), (9, 31310), (10, 31313), (11, 31325), (12, 31343), (13, 31346), (18, 31565), (20, 31703), (23, 31790), (25, 31838), (31, 31901), (33, 31931), (35, 31958), (37, 31967), (39, 31985), (40, 31988), (45, 32042), (46, 32108), (58, 32501), (59, 32534), (62, 32654), (69, 32888), (81, 33092), (82, 33095), (84, 33152), (85, 33155), (87, 33167), (88, 33191), (89, 33209), (90, 33212), (91, 33224), (96, 33257), (98, 33299), (107, 33425), (108, 33428), (109, 33593), (110, 33647), (114, 33710), (115, 33719), (119, 33893), (121, 33998), (125, 34109), (128, 34130), (134, 34253), (135, 34259), (138, 34301), (139, 34319), (147, 34463), (149, 34505), (153, 34610),

Gene: InterFolia_97 Start: 34554, Stop: 38246, Start Num: 1

Candidate Starts for InterFolia_97:

(Start: 1 @34554 has 173 MA's), (3, 34635), (5, 34656), (6, 34680), (8, 34725), (9, 34752), (10, 34755), (11, 34767), (12, 34785), (13, 34788), (18, 35007), (20, 35145), (23, 35232), (25, 35280), (31, 35343), (33, 35373), (35, 35400), (37, 35409), (40, 35430), (45, 35484), (46, 35550), (58, 35943), (59, 35976), (62, 36096), (69, 36327), (81, 36531), (82, 36534), (84, 36591), (85, 36594), (87, 36606), (88, 36630), (89, 36648), (90, 36651), (91, 36663), (96, 36696), (98, 36738), (107, 36864), (108, 36867), (109, 37014), (110, 37068), (114, 37131), (115, 37140), (119, 37314), (121, 37419), (125, 37530), (128, 37551), (134, 37674), (135, 37680), (138, 37722), (139, 37740), (147, 37884), (149, 37926), (153, 38031),

Gene: Iota_82 Start: 30888, Stop: 34601, Start Num: 1

Candidate Starts for Iota_82:

(Start: 1 @30888 has 173 MA's), (3, 30969), (5, 30990), (6, 31014), (8, 31059), (9, 31086), (10, 31089), (11, 31101), (12, 31119), (13, 31122), (18, 31341), (20, 31479), (23, 31566), (25, 31614), (31, 31677), (33, 31707), (35, 31734), (37, 31743), (40, 31764), (45, 31818), (46, 31884), (58, 32277), (59, 32310), (62, 32430), (69, 32664), (81, 32868), (82, 32871), (84, 32928), (85, 32931), (87, 32943), (88, 32967), (89, 32985), (90, 32988), (91, 33000), (96, 33033), (98, 33075), (107, 33201), (108, 33204), (109, 33369), (114, 33486), (115, 33495), (119, 33669), (121, 33774), (125, 33885), (128, 33906), (134, 34029), (135, 34035), (138, 34077), (139, 34095), (147, 34239), (149, 34281), (153, 34386),

Gene: Issimir_87 Start: 32089, Stop: 35802, Start Num: 1

Candidate Starts for Issimir_87:

(Start: 1 @32089 has 173 MA's), (3, 32170), (5, 32191), (6, 32215), (8, 32260), (9, 32287), (10, 32290), (11, 32302), (12, 32320), (13, 32323), (18, 32542), (20, 32680), (23, 32767), (25, 32815), (31, 32878), (33, 32908), (35, 32935), (37, 32944), (39, 32962), (40, 32965), (45, 33019), (46, 33085), (58, 33478), (59, 33511), (62, 33631), (69, 33865), (81, 34069), (82, 34072), (84, 34129), (85, 34132), (87, 34144), (88, 34168), (89, 34186), (90, 34189), (91, 34201), (96, 34234), (98, 34276), (107, 34402), (108, 34405), (109, 34570), (114, 34687), (115, 34696), (119, 34870), (121, 34975), (125, 35086), (128, 35107), (134, 35230), (135, 35236), (138, 35278), (139, 35296), (147, 35440), (149, 35482), (153, 35587),

Gene: Izajani_88 Start: 32162, Stop: 35875, Start Num: 1

Candidate Starts for Izajani_88:

(Start: 1 @32162 has 173 MA's), (3, 32243), (5, 32264), (6, 32288), (8, 32333), (9, 32360), (10, 32363), (11, 32375), (12, 32393), (13, 32396), (18, 32615), (20, 32753), (23, 32840), (25, 32888), (31, 32951), (33, 32981), (35, 33008), (37, 33017), (39, 33035), (40, 33038), (45, 33092), (46, 33158), (58, 33551), (59, 33584), (62, 33704), (69, 33938), (81, 34142), (82, 34145), (84, 34202), (85, 34205), (87, 34217), (88, 34241), (89, 34259), (90, 34262), (91, 34274), (96, 34307), (98, 34349), (107, 34475), (108, 34478), (109, 34643), (110, 34697), (114, 34760), (115, 34769), (119, 34943), (121, 35048), (125, 35159), (128, 35180), (134, 35303), (135, 35309), (138, 35351), (139, 35369), (147, 35513), (149, 35555), (153, 35660),

Gene: JPickles_86 Start: 29578, Stop: 33291, Start Num: 1

Candidate Starts for JPickles_86:

(Start: 1 @29578 has 173 MA's), (3, 29659), (5, 29680), (6, 29704), (8, 29749), (9, 29776), (10, 29779), (11, 29791), (12, 29809), (13, 29812), (18, 30031), (20, 30169), (23, 30256), (25, 30304), (31, 30367), (33, 30397), (35, 30424), (37, 30433), (39, 30451), (40, 30454), (45, 30508), (46, 30574), (58, 30967), (59, 31000), (62, 31120), (69, 31354), (81, 31558), (82, 31561), (84, 31618), (85, 31621), (87, 31633), (88, 31657), (89, 31675), (90, 31678), (91, 31690), (96, 31723), (98, 31765), (107, 31891), (108, 31894), (109, 32059), (110, 32113), (114, 32176), (115, 32185), (119, 32359), (121, 32464), (125, 32575), (128, 32596), (134, 32719), (135, 32725), (138, 32767), (139, 32785), (147, 32929), (149, 32971), (153, 33076),

Gene: Janiyra_90 Start: 31815, Stop: 35156, Start Num: 1

Candidate Starts for Janiyra_90:

(Start: 1 @31815 has 173 MA's), (3, 31896), (5, 31917), (6, 31941), (8, 31986), (9, 32013), (10, 32016), (11, 32028), (12, 32046), (13, 32049), (18, 32268), (20, 32406), (23, 32493), (25, 32541), (31, 32604), (33, 32634), (35, 32661), (37, 32670), (40, 32691), (45, 32745), (46, 32811), (58, 33204), (59, 33237), (64, 33483), (69, 33594), (81, 33798), (82, 33801), (84, 33858), (85, 33861), (87, 33873), (88, 33897), (89, 33915), (90, 33918), (91, 33930), (96, 33963), (98, 34005), (109, 34146), (110, 34200), (114, 34260), (115, 34269), (119, 34443), (121, 34548), (125, 34659), (128, 34680), (147, 34815), (149, 34857), (153, 34941),

Gene: JayJay_94 Start: 32642, Stop: 36355, Start Num: 1

Candidate Starts for JayJay_94:

(Start: 1 @32642 has 173 MA's), (3, 32723), (5, 32744), (6, 32768), (8, 32813), (9, 32840), (10, 32843), (11, 32855), (12, 32873), (13, 32876), (18, 33095), (20, 33233), (23, 33320), (25, 33368), (31, 33431), (33, 33461), (35, 33488), (37, 33497), (40, 33518), (45, 33572), (46, 33638), (58, 34031), (59, 34064), (62, 34184), (69, 34418), (81, 34622), (82, 34625), (84, 34682), (85, 34685), (87, 34697), (88, 34721), (89, 34739), (90, 34742), (91, 34754), (96, 34787), (98, 34829), (107, 34955), (108, 34958), (109, 35123), (114, 35240), (115, 35249), (119, 35423), (121, 35528), (125, 35639), (128, 35660), (134, 35783), (135, 35789), (138, 35831), (139, 35849), (147, 35993), (149, 36035), (153, 36140),

Gene: Jaygup_88 Start: 31106, Stop: 34816, Start Num: 1

Candidate Starts for Jaygup_88:

(Start: 1 @31106 has 173 MA's), (3, 31187), (5, 31208), (6, 31232), (9, 31304), (10, 31307), (11, 31319), (12, 31337), (13, 31340), (18, 31559), (20, 31697), (23, 31784), (25, 31832), (31, 31895), (33, 31925), (35, 31952), (37, 31961), (40, 31982), (45, 32036), (46, 32102), (58, 32495), (59, 32528), (62, 32648), (69, 32879), (81, 33083), (82, 33086), (84, 33143), (85, 33146), (87, 33158), (88, 33182), (89, 33200), (90, 33203), (91, 33215), (96, 33248), (98, 33290), (107, 33416), (108, 33419), (109, 33584), (114, 33701), (115, 33710), (119, 33884), (121, 33989), (125, 34100), (128, 34121), (134, 34244), (135, 34250), (138, 34292), (139, 34310), (147, 34454), (149, 34496), (153, 34601),

Gene: Jedediah_91 Start: 31606, Stop: 35316, Start Num: 1

Candidate Starts for Jedediah_91:

(Start: 1 @31606 has 173 MA's), (3, 31687), (5, 31708), (6, 31732), (8, 31777), (9, 31804), (10, 31807), (11, 31819), (12, 31837), (13, 31840), (18, 32059), (20, 32197), (23, 32284), (25, 32332), (31, 32395), (33, 32425), (35, 32452), (37, 32461), (40, 32482), (45, 32536), (46, 32602), (58, 32995), (59, 33028), (62, 33148), (69, 33379), (81, 33583), (82, 33586), (84, 33643), (85, 33646), (87, 33658), (88, 33682), (89, 33700), (90, 33703), (91, 33715), (96, 33748), (98, 33790), (107, 33916), (108, 33919), (109, 34084), (114, 34201), (115, 34210), (119, 34384), (121, 34489), (125, 34600), (128, 34621), (134, 34744), (135, 34750), (138, 34792), (139, 34810), (147, 34954), (149, 34996), (153, 35101),

Gene: Jemmno_88 Start: 31056, Stop: 34766, Start Num: 1

Candidate Starts for Jemmno_88:

(Start: 1 @31056 has 173 MA's), (3, 31137), (5, 31158), (6, 31182), (8, 31227), (9, 31254), (10, 31257), (11, 31269), (12, 31287), (13, 31290), (18, 31509), (20, 31647), (23, 31734), (25, 31782), (31, 31845), (33, 31875), (35, 31902), (37, 31911), (40, 31932), (45, 31986), (46, 32052), (58, 32445), (59, 32478), (62, 32598), (69, 32829), (81, 33033), (82, 33036), (84, 33093), (85, 33096), (87, 33108), (88, 33132), (89, 33150), (90, 33153), (91, 33165), (96, 33198), (98, 33240), (107, 33366), (108, 33369), (109, 33534), (114, 33651), (115, 33660), (119, 33834), (121, 33939), (125, 34050), (128, 34071), (134, 34194), (135, 34200), (138, 34242), (139, 34260), (147, 34404), (149, 34446), (153, 34551),

Gene: Jessibeth14_87 Start: 31931, Stop: 35644, Start Num: 1

Candidate Starts for Jessibeth14_87:

(Start: 1 @31931 has 173 MA's), (3, 32012), (5, 32033), (6, 32057), (8, 32102), (9, 32129), (10, 32132), (11, 32144), (12, 32162), (13, 32165), (18, 32384), (20, 32522), (23, 32609), (25, 32657), (31, 32720), (33, 32750), (35, 32777), (37, 32786), (39, 32804), (40, 32807), (45, 32861), (46, 32927), (58, 33320), (59, 33353), (62, 33473), (69, 33707), (81, 33911), (82, 33914), (84, 33971), (85, 33974), (87, 33986), (88, 34010), (89, 34028), (90, 34031), (91, 34043), (96, 34076), (98, 34118), (107, 34244), (108, 34247), (109, 34412), (110, 34466), (114, 34529), (115, 34538), (119, 34712), (121, 34817), (125, 34928), (128, 34949), (134, 35072), (135, 35078), (138, 35120), (139, 35138), (147, 35282), (149, 35324), (153, 35429),

Gene: Jezreel_86 Start: 31841, Stop: 35554, Start Num: 1

Candidate Starts for Jezreel_86:

(Start: 1 @31841 has 173 MA's), (3, 31922), (5, 31943), (6, 31967), (9, 32039), (10, 32042), (11, 32054), (12, 32072), (13, 32075), (18, 32294), (20, 32432), (23, 32519), (25, 32567), (31, 32630), (33, 32660), (35, 32687), (37, 32696), (40, 32717), (45, 32771), (46, 32837), (58, 33230), (59, 33263), (62, 33383), (69, 33617), (81, 33821), (82, 33824), (84, 33881), (85, 33884), (87, 33896), (88, 33920), (89, 33938), (90, 33941), (91, 33953), (96, 33986), (98, 34028), (107, 34154), (108, 34157), (109, 34322), (110, 34376), (114, 34439), (115, 34448), (119, 34622), (121, 34727), (125, 34838), (128, 34859), (134, 34982), (135, 34988), (138, 35030), (139, 35048), (147, 35192), (149, 35234), (153, 35339),

Gene: JigglyPuff_94 Start: 33726, Stop: 37418, Start Num: 1

Candidate Starts for JigglyPuff_94:

(Start: 1 @33726 has 173 MA's), (3, 33807), (5, 33828), (6, 33852), (8, 33897), (9, 33924), (10, 33927), (11, 33939), (12, 33957), (13, 33960), (18, 34179), (20, 34317), (23, 34404), (25, 34452), (31, 34515), (33, 34545), (35, 34572), (37, 34581), (40, 34602), (45, 34656), (46, 34722), (58, 35115), (59, 35148), (62, 35268), (69, 35499), (81, 35703), (82, 35706), (84, 35763), (85, 35766), (87, 35778), (88, 35802), (89, 35820), (90, 35823), (91, 35835), (96, 35868), (98, 35910), (107, 36036), (108, 36039), (109, 36186), (114, 36303), (115, 36312), (119, 36486), (121, 36591), (125, 36702), (128, 36723), (134, 36846), (135, 36852), (138, 36894), (139, 36912), (147, 37056), (149, 37098), (153, 37203),

Gene: JulietS_81 Start: 29410, Stop: 33123, Start Num: 1

Candidate Starts for JulietS_81:

(Start: 1 @29410 has 173 MA's), (3, 29491), (5, 29512), (6, 29536), (8, 29581), (9, 29608), (10, 29611), (11, 29623), (12, 29641), (13, 29644), (18, 29863), (20, 30001), (23, 30088), (25, 30136), (31, 30199), (33, 30229), (35, 30256), (37, 30265), (40, 30286), (45, 30340), (46, 30406), (58, 30799), (59, 30832), (62, 30952), (69, 31186), (81, 31390), (82, 31393), (84, 31450), (85, 31453), (87, 31465), (88, 31489), (89, 31507), (90, 31510), (91, 31522), (96, 31555), (98, 31597), (107, 31723), (108, 31726), (109, 31891), (114, 32008), (115, 32017), (119, 32191), (121, 32296), (125, 32407), (128, 32428), (134, 32551), (135, 32557), (138, 32599), (139, 32617), (147, 32761), (149, 32803), (153, 32908),

Gene: JustHall_84 Start: 31428, Stop: 34790, Start Num: 1

Candidate Starts for JustHall_84:

(Start: 1 @31428 has 173 MA's), (3, 31509), (5, 31530), (6, 31554), (8, 31599), (9, 31626), (10, 31629), (11, 31641), (12, 31659), (13, 31662), (18, 31881), (20, 32019), (23, 32106), (25, 32154), (31, 32217),

(33, 32247), (35, 32274), (37, 32283), (40, 32304), (45, 32358), (46, 32424), (57, 32802), (58, 32838), (64, 33114), (69, 33225), (81, 33429), (82, 33432), (84, 33489), (85, 33492), (87, 33504), (88, 33528), (89, 33546), (90, 33549), (91, 33561), (96, 33594), (98, 33636), (109, 33777), (110, 33831), (114, 33894), (115, 33903), (119, 34077), (121, 34182), (125, 34293), (128, 34314), (147, 34449), (149, 34491), (153, 34575),

Gene: Kamryn_88 Start: 32670, Stop: 36383, Start Num: 1

Candidate Starts for Kamryn_88:

(Start: 1 @32670 has 173 MA's), (3, 32751), (5, 32772), (6, 32796), (8, 32841), (9, 32868), (10, 32871), (11, 32883), (12, 32901), (13, 32904), (18, 33123), (20, 33261), (23, 33348), (25, 33396), (31, 33459), (33, 33489), (35, 33516), (37, 33525), (39, 33543), (40, 33546), (45, 33600), (46, 33666), (58, 34059), (59, 34092), (62, 34212), (69, 34446), (81, 34650), (82, 34653), (84, 34710), (85, 34713), (87, 34725), (88, 34749), (89, 34767), (90, 34770), (91, 34782), (96, 34815), (98, 34857), (107, 34983), (108, 34986), (109, 35151), (110, 35205), (114, 35268), (115, 35277), (119, 35451), (121, 35556), (125, 35667), (128, 35688), (134, 35811), (135, 35817), (138, 35859), (139, 35877), (147, 36021), (149, 36063), (153, 36168),

Gene: Kboogie_91 Start: 31097, Stop: 34438, Start Num: 1

Candidate Starts for Kboogie_91:

(Start: 1 @31097 has 173 MA's), (3, 31178), (5, 31199), (6, 31223), (8, 31268), (9, 31295), (10, 31298), (11, 31310), (12, 31328), (13, 31331), (18, 31550), (20, 31688), (23, 31775), (25, 31823), (31, 31886), (33, 31916), (35, 31943), (37, 31952), (40, 31973), (45, 32027), (46, 32093), (58, 32486), (59, 32519), (64, 32765), (69, 32876), (81, 33080), (82, 33083), (84, 33140), (85, 33143), (87, 33155), (88, 33179), (89, 33197), (90, 33200), (91, 33212), (96, 33245), (98, 33287), (109, 33428), (110, 33482), (114, 33542), (115, 33551), (119, 33725), (121, 33830), (125, 33941), (128, 33962), (147, 34097), (149, 34139), (153, 34223),

Gene: Khaleesi_87 Start: 31893, Stop: 35606, Start Num: 1

Candidate Starts for Khaleesi_87:

(Start: 1 @31893 has 173 MA's), (3, 31974), (5, 31995), (6, 32019), (8, 32064), (9, 32091), (10, 32094), (11, 32106), (12, 32124), (13, 32127), (18, 32346), (20, 32484), (23, 32571), (25, 32619), (31, 32682), (33, 32712), (35, 32739), (37, 32748), (39, 32766), (40, 32769), (45, 32823), (46, 32889), (58, 33282), (59, 33315), (62, 33435), (69, 33669), (81, 33873), (82, 33876), (84, 33933), (85, 33936), (87, 33948), (88, 33972), (89, 33990), (90, 33993), (91, 34005), (96, 34038), (98, 34080), (107, 34206), (108, 34209), (109, 34374), (110, 34428), (114, 34491), (115, 34500), (119, 34674), (121, 34779), (125, 34890), (128, 34911), (134, 35034), (135, 35040), (138, 35082), (139, 35100), (147, 35244), (149, 35286), (153, 35391),

Gene: Koguma_84 Start: 29630, Stop: 33343, Start Num: 1

Candidate Starts for Koguma_84:

(Start: 1 @29630 has 173 MA's), (3, 29711), (5, 29732), (6, 29756), (8, 29801), (9, 29828), (10, 29831), (11, 29843), (12, 29861), (13, 29864), (18, 30083), (20, 30221), (23, 30308), (25, 30356), (31, 30419), (33, 30449), (35, 30476), (37, 30485), (40, 30506), (45, 30560), (46, 30626), (58, 31019), (59, 31052), (62, 31172), (69, 31406), (81, 31610), (82, 31613), (84, 31670), (85, 31673), (87, 31685), (88, 31709), (89, 31727), (90, 31730), (91, 31742), (96, 31775), (98, 31817), (107, 31943), (108, 31946), (109, 32111), (114, 32228), (115, 32237), (119, 32411), (121, 32516), (125, 32627), (128, 32648), (134, 32771), (135, 32777), (138, 32819), (139, 32837), (147, 32981), (149, 33023), (153, 33128),

Gene: LRRHood_82 Start: 31449, Stop: 35162, Start Num: 1

Candidate Starts for LRRHood_82:

(Start: 1 @31449 has 173 MA's), (3, 31530), (5, 31551), (6, 31575), (8, 31620), (9, 31647), (10, 31650), (11, 31662), (12, 31680), (13, 31683), (18, 31902), (20, 32040), (23, 32127), (25, 32175), (31, 32238), (33, 32268), (35, 32295), (37, 32304), (40, 32325), (45, 32379), (46, 32445), (58, 32838), (59, 32871),

(62, 32991), (69, 33225), (81, 33429), (82, 33432), (84, 33489), (85, 33492), (87, 33504), (88, 33528), (89, 33546), (90, 33549), (91, 33561), (96, 33594), (98, 33636), (107, 33762), (108, 33765), (109, 33930), (114, 34047), (115, 34056), (119, 34230), (121, 34335), (125, 34446), (128, 34467), (134, 34590), (135, 34596), (138, 34638), (139, 34656), (147, 34800), (149, 34842), (153, 34947),

Gene: Latch_88 Start: 31151, Stop: 34864, Start Num: 1

Candidate Starts for Latch_88:

(Start: 1 @31151 has 173 MA's), (3, 31232), (5, 31253), (6, 31277), (8, 31322), (9, 31349), (10, 31352), (11, 31364), (12, 31382), (13, 31385), (18, 31604), (20, 31742), (23, 31829), (25, 31877), (31, 31940), (33, 31970), (35, 31997), (37, 32006), (39, 32024), (40, 32027), (45, 32081), (46, 32147), (58, 32540), (59, 32573), (62, 32693), (69, 32927), (81, 33131), (82, 33134), (84, 33191), (85, 33194), (87, 33206), (88, 33230), (89, 33248), (90, 33251), (91, 33263), (96, 33296), (98, 33338), (107, 33464), (108, 33467), (109, 33632), (110, 33686), (114, 33749), (115, 33758), (119, 33932), (121, 34037), (125, 34148), (128, 34169), (134, 34292), (135, 34298), (138, 34340), (139, 34358), (147, 34502), (149, 34544), (153, 34649),

Gene: Lee7_86 Start: 32146, Stop: 35469, Start Num: 1

Candidate Starts for Lee7_86:

(Start: 1 @32146 has 173 MA's), (3, 32227), (5, 32248), (6, 32272), (8, 32317), (9, 32344), (10, 32347), (11, 32359), (12, 32377), (13, 32380), (18, 32599), (20, 32737), (23, 32824), (25, 32872), (31, 32935), (33, 32965), (35, 32992), (37, 33001), (39, 33019), (40, 33022), (45, 33076), (46, 33142), (58, 33520), (59, 33553), (62, 33673), (69, 33904), (81, 34108), (82, 34111), (84, 34168), (85, 34171), (87, 34183), (88, 34207), (89, 34225), (90, 34228), (91, 34240), (96, 34273), (98, 34315), (109, 34456), (110, 34510), (114, 34573), (115, 34582), (119, 34756), (121, 34861), (125, 34972), (128, 34993), (147, 35128), (149, 35170), (153, 35254),

Gene: Lethe_88 Start: 32341, Stop: 36054, Start Num: 1

Candidate Starts for Lethe_88:

(Start: 1 @32341 has 173 MA's), (3, 32422), (5, 32443), (6, 32467), (8, 32512), (9, 32539), (10, 32542), (11, 32554), (12, 32572), (13, 32575), (18, 32794), (20, 32932), (23, 33019), (25, 33067), (31, 33130), (33, 33160), (35, 33187), (37, 33196), (39, 33214), (40, 33217), (45, 33271), (46, 33337), (58, 33730), (59, 33763), (62, 33883), (69, 34117), (81, 34321), (82, 34324), (84, 34381), (85, 34384), (87, 34396), (88, 34420), (89, 34438), (90, 34441), (91, 34453), (96, 34486), (98, 34528), (107, 34654), (108, 34657), (109, 34822), (114, 34939), (115, 34948), (119, 35122), (121, 35227), (125, 35338), (128, 35359), (134, 35482), (135, 35488), (138, 35530), (139, 35548), (147, 35692), (149, 35734), (153, 35839),

Gene: LifeSavor_87 Start: 30871, Stop: 34581, Start Num: 1

Candidate Starts for LifeSavor_87:

(Start: 1 @30871 has 173 MA's), (3, 30952), (5, 30973), (6, 30997), (9, 31069), (10, 31072), (11, 31084), (12, 31102), (13, 31105), (18, 31324), (20, 31462), (23, 31549), (25, 31597), (31, 31660), (33, 31690), (35, 31717), (37, 31726), (40, 31747), (45, 31801), (46, 31867), (58, 32260), (59, 32293), (62, 32413), (69, 32644), (81, 32848), (82, 32851), (84, 32908), (85, 32911), (87, 32923), (88, 32947), (89, 32965), (90, 32968), (91, 32980), (96, 33013), (98, 33055), (107, 33181), (108, 33184), (109, 33349), (114, 33466), (115, 33475), (119, 33649), (121, 33754), (125, 33865), (128, 33886), (134, 34009), (135, 34015), (138, 34057), (139, 34075), (147, 34219), (149, 34261), (153, 34366),

Gene: LinStu_88 Start: 32513, Stop: 36226, Start Num: 1

Candidate Starts for LinStu_88:

(Start: 1 @32513 has 173 MA's), (3, 32594), (5, 32615), (6, 32639), (8, 32684), (9, 32711), (10, 32714), (11, 32726), (12, 32744), (13, 32747), (18, 32966), (20, 33104), (23, 33191), (25, 33239), (31, 33302), (33, 33332), (35, 33359), (37, 33368), (40, 33389), (45, 33443), (46, 33509), (58, 33902), (59, 33935), (62, 34055), (69, 34289), (81, 34493), (82, 34496), (84, 34553), (85, 34556), (87, 34568), (88, 34592),

(89, 34610), (90, 34613), (91, 34625), (96, 34658), (98, 34700), (107, 34826), (108, 34829), (109, 34994), (114, 35111), (115, 35120), (119, 35294), (121, 35399), (125, 35510), (128, 35531), (134, 35654), (135, 35660), (138, 35702), (139, 35720), (147, 35864), (149, 35906), (153, 36011),

Gene: Littleton_88 Start: 31109, Stop: 34819, Start Num: 1

Candidate Starts for Littleton_88:

(Start: 1 @31109 has 173 MA's), (3, 31190), (5, 31211), (6, 31235), (8, 31280), (9, 31307), (10, 31310), (11, 31322), (12, 31340), (13, 31343), (18, 31562), (20, 31700), (23, 31787), (25, 31835), (31, 31898), (33, 31928), (35, 31955), (37, 31964), (40, 31985), (45, 32039), (46, 32105), (58, 32498), (59, 32531), (62, 32651), (69, 32882), (81, 33086), (82, 33089), (84, 33146), (85, 33149), (87, 33161), (88, 33185), (89, 33203), (90, 33206), (91, 33218), (96, 33251), (98, 33293), (107, 33419), (108, 33422), (109, 33587), (114, 33704), (115, 33713), (119, 33887), (121, 33992), (125, 34103), (128, 34124), (134, 34247), (135, 34253), (138, 34295), (139, 34313), (147, 34457), (149, 34499), (153, 34604),

Gene: Loanshark_88 Start: 32146, Stop: 35859, Start Num: 1

Candidate Starts for Loanshark_88:

(Start: 1 @32146 has 173 MA's), (3, 32227), (5, 32248), (6, 32272), (8, 32317), (9, 32344), (10, 32347), (11, 32359), (12, 32377), (13, 32380), (18, 32599), (20, 32737), (23, 32824), (25, 32872), (31, 32935), (33, 32965), (35, 32992), (37, 33001), (39, 33019), (40, 33022), (45, 33076), (46, 33142), (58, 33535), (59, 33568), (62, 33688), (69, 33922), (81, 34126), (82, 34129), (84, 34186), (85, 34189), (87, 34201), (88, 34225), (89, 34243), (90, 34246), (91, 34258), (96, 34291), (98, 34333), (107, 34459), (108, 34462), (109, 34627), (114, 34744), (115, 34753), (119, 34927), (121, 35032), (125, 35143), (128, 35164), (134, 35287), (135, 35293), (138, 35335), (139, 35353), (147, 35497), (149, 35539), (153, 35644),

Gene: LolaVinca_90 Start: 33306, Stop: 36965, Start Num: 1

Candidate Starts for LolaVinca_90:

(Start: 1 @33306 has 173 MA's), (3, 33387), (5, 33408), (6, 33432), (8, 33477), (9, 33504), (10, 33507), (11, 33519), (12, 33537), (13, 33540), (18, 33759), (20, 33897), (23, 33984), (25, 34032), (31, 34095), (33, 34125), (35, 34152), (37, 34161), (39, 34179), (40, 34182), (45, 34236), (46, 34302), (58, 34695), (59, 34728), (62, 34848), (64, 34962), (69, 35046), (81, 35250), (82, 35253), (84, 35310), (85, 35313), (87, 35325), (88, 35349), (89, 35367), (90, 35370), (91, 35382), (96, 35415), (98, 35457), (107, 35583), (108, 35586), (109, 35733), (110, 35787), (114, 35850), (115, 35859), (119, 36033), (121, 36138), (125, 36249), (128, 36270), (134, 36393), (135, 36399), (138, 36441), (139, 36459), (147, 36603), (149, 36645), (153, 36750),

Gene: LordLeafolot_93 Start: 34239, Stop: 37952, Start Num: 1

Candidate Starts for LordLeafolot_93:

(Start: 1 @34239 has 173 MA's), (3, 34320), (5, 34341), (6, 34365), (8, 34410), (9, 34437), (10, 34440), (11, 34452), (12, 34470), (13, 34473), (18, 34692), (20, 34830), (23, 34917), (25, 34965), (31, 35028), (33, 35058), (35, 35085), (37, 35094), (39, 35112), (40, 35115), (45, 35169), (46, 35235), (58, 35628), (59, 35661), (62, 35781), (69, 36015), (81, 36219), (82, 36222), (84, 36279), (85, 36282), (87, 36294), (88, 36318), (89, 36336), (90, 36339), (91, 36351), (96, 36384), (98, 36426), (107, 36552), (108, 36555), (109, 36720), (110, 36774), (114, 36837), (115, 36846), (119, 37020), (121, 37125), (125, 37236), (128, 37257), (134, 37380), (135, 37386), (138, 37428), (139, 37446), (147, 37590), (149, 37632), (153, 37737),

Gene: Lukilu_79 Start: 31361, Stop: 34699, Start Num: 1

Candidate Starts for Lukilu_79:

(Start: 1 @31361 has 173 MA's), (3, 31442), (5, 31463), (6, 31487), (8, 31532), (9, 31559), (10, 31562), (11, 31574), (12, 31592), (13, 31595), (18, 31814), (20, 31952), (23, 32039), (25, 32087), (31, 32150), (33, 32180), (35, 32207), (37, 32216), (39, 32234), (40, 32237), (45, 32291), (46, 32357), (58, 32750), (59, 32783), (62, 32903), (69, 33134), (81, 33338), (82, 33341), (84, 33398), (85, 33401), (87, 33413),

(88, 33437), (89, 33455), (90, 33458), (91, 33470), (96, 33503), (98, 33545), (109, 33686), (110, 33740), (114, 33803), (115, 33812), (119, 33986), (121, 34091), (125, 34202), (128, 34223), (147, 34358), (149, 34400), (153, 34484),

Gene: Maby2021_88 Start: 31827, Stop: 35540, Start Num: 1

Candidate Starts for Maby2021_88:

(Start: 1 @31827 has 173 MA's), (3, 31908), (5, 31929), (6, 31953), (8, 31998), (9, 32025), (10, 32028), (11, 32040), (12, 32058), (13, 32061), (18, 32280), (20, 32418), (23, 32505), (25, 32553), (31, 32616), (33, 32646), (35, 32673), (37, 32682), (39, 32700), (40, 32703), (45, 32757), (46, 32823), (58, 33216), (59, 33249), (62, 33369), (69, 33603), (81, 33807), (82, 33810), (84, 33867), (85, 33870), (87, 33882), (88, 33906), (89, 33924), (90, 33927), (91, 33939), (96, 33972), (98, 34014), (107, 34140), (108, 34143), (109, 34308), (110, 34362), (114, 34425), (115, 34434), (119, 34608), (121, 34713), (125, 34824), (128, 34845), (134, 34968), (135, 34974), (138, 35016), (139, 35034), (147, 35178), (149, 35220), (153, 35325),

Gene: Mangeria_88 Start: 32105, Stop: 35821, Start Num: 1

Candidate Starts for Mangeria_88:

(Start: 1 @32105 has 173 MA's), (3, 32186), (5, 32207), (6, 32231), (8, 32276), (9, 32303), (10, 32306), (11, 32318), (12, 32336), (13, 32339), (18, 32558), (20, 32696), (23, 32783), (25, 32831), (31, 32894), (33, 32924), (35, 32951), (37, 32960), (40, 32981), (45, 33035), (46, 33101), (58, 33494), (59, 33527), (62, 33647), (69, 33878), (81, 34082), (82, 34085), (84, 34142), (85, 34145), (87, 34157), (88, 34181), (89, 34199), (90, 34202), (91, 34214), (96, 34247), (98, 34289), (107, 34415), (108, 34418), (109, 34583), (114, 34700), (115, 34709), (119, 34883), (121, 34988), (125, 35099), (128, 35120), (134, 35243), (135, 35249), (138, 35291), (139, 35309), (147, 35453), (149, 35495), (153, 35606),

Gene: Matsumoto_86 Start: 31070, Stop: 34780, Start Num: 1

Candidate Starts for Matsumoto_86:

(Start: 1 @31070 has 173 MA's), (3, 31151), (5, 31172), (6, 31196), (9, 31268), (10, 31271), (11, 31283), (12, 31301), (13, 31304), (18, 31523), (20, 31661), (23, 31748), (25, 31796), (31, 31859), (33, 31889), (35, 31916), (37, 31925), (40, 31946), (45, 32000), (46, 32066), (58, 32459), (59, 32492), (62, 32612), (69, 32843), (81, 33047), (82, 33050), (84, 33107), (85, 33110), (87, 33122), (88, 33146), (89, 33164), (90, 33167), (91, 33179), (96, 33212), (98, 33254), (107, 33380), (108, 33383), (109, 33548), (114, 33665), (115, 33674), (119, 33848), (121, 33953), (125, 34064), (128, 34085), (134, 34208), (135, 34214), (138, 34256), (139, 34274), (147, 34418), (149, 34460), (153, 34565),

Gene: McGee_89 Start: 30335, Stop: 34048, Start Num: 1

Candidate Starts for McGee_89:

(Start: 1 @30335 has 173 MA's), (3, 30416), (5, 30437), (6, 30461), (8, 30506), (9, 30533), (10, 30536), (11, 30548), (12, 30566), (13, 30569), (18, 30788), (20, 30926), (23, 31013), (25, 31061), (31, 31124), (33, 31154), (35, 31181), (37, 31190), (39, 31208), (40, 31211), (45, 31265), (46, 31331), (58, 31724), (59, 31757), (62, 31877), (69, 32111), (81, 32315), (82, 32318), (84, 32375), (85, 32378), (87, 32390), (88, 32414), (89, 32432), (90, 32435), (91, 32447), (96, 32480), (98, 32522), (107, 32648), (108, 32651), (109, 32816), (110, 32870), (114, 32933), (115, 32942), (119, 33116), (121, 33221), (125, 33332), (128, 33353), (134, 33476), (135, 33482), (138, 33524), (139, 33542), (147, 33686), (149, 33728), (153, 33833),

Gene: McWolfish_86 Start: 31574, Stop: 35287, Start Num: 1

Candidate Starts for McWolfish_86:

(Start: 1 @31574 has 173 MA's), (3, 31655), (5, 31676), (6, 31700), (8, 31745), (9, 31772), (10, 31775), (11, 31787), (12, 31805), (13, 31808), (18, 32027), (20, 32165), (23, 32252), (25, 32300), (31, 32363), (33, 32393), (35, 32420), (37, 32429), (39, 32447), (40, 32450), (45, 32504), (46, 32570), (58, 32963), (59, 32996), (62, 33116), (69, 33350), (81, 33554), (82, 33557), (84, 33614), (85, 33617), (87, 33629), (88, 33653), (89, 33671), (90, 33674), (91, 33686), (96, 33719), (98, 33761), (107, 33887), (108,

33890), (109, 34055), (110, 34109), (114, 34172), (115, 34181), (119, 34355), (121, 34460), (125, 34571), (128, 34592), (134, 34715), (135, 34721), (138, 34763), (139, 34781), (147, 34925), (149, 34967), (153, 35072),

Gene: Megamind_87 Start: 31812, Stop: 35525, Start Num: 1

Candidate Starts for Megamind_87:

(Start: 1 @31812 has 173 MA's), (3, 31893), (5, 31914), (6, 31938), (8, 31983), (9, 32010), (10, 32013), (11, 32025), (12, 32043), (13, 32046), (18, 32265), (20, 32403), (23, 32490), (25, 32538), (31, 32601), (33, 32631), (35, 32658), (37, 32667), (39, 32685), (40, 32688), (45, 32742), (46, 32808), (58, 33201), (59, 33234), (62, 33354), (69, 33588), (81, 33792), (82, 33795), (84, 33852), (85, 33855), (87, 33867), (88, 33891), (89, 33909), (90, 33912), (91, 33924), (96, 33957), (98, 33999), (107, 34125), (108, 34128), (109, 34293), (110, 34347), (114, 34410), (115, 34419), (119, 34593), (121, 34698), (125, 34809), (128, 34830), (134, 34953), (135, 34959), (138, 35001), (139, 35019), (147, 35163), (149, 35205), (153, 35310),

Gene: Melpomini_82 Start: 29705, Stop: 33067, Start Num: 1

Candidate Starts for Melpomini_82:

(Start: 1 @29705 has 173 MA's), (3, 29786), (5, 29807), (6, 29831), (8, 29876), (9, 29903), (10, 29906), (11, 29918), (12, 29936), (13, 29939), (18, 30158), (20, 30296), (23, 30383), (25, 30431), (31, 30494), (33, 30524), (35, 30551), (37, 30560), (40, 30581), (45, 30635), (46, 30701), (57, 31079), (58, 31115), (64, 31391), (69, 31502), (81, 31706), (82, 31709), (84, 31766), (85, 31769), (87, 31781), (88, 31805), (89, 31823), (90, 31826), (91, 31838), (96, 31871), (98, 31913), (109, 32054), (110, 32108), (114, 32171), (115, 32180), (119, 32354), (121, 32459), (125, 32570), (128, 32591), (147, 32726), (149, 32768), (153, 32852),

Gene: MikeLiesIn_89 Start: 32159, Stop: 35872, Start Num: 1

Candidate Starts for MikeLiesIn_89:

(Start: 1 @32159 has 173 MA's), (3, 32240), (5, 32261), (6, 32285), (8, 32330), (9, 32357), (10, 32360), (11, 32372), (12, 32390), (13, 32393), (18, 32612), (20, 32750), (23, 32837), (25, 32885), (31, 32948), (33, 32978), (35, 33005), (37, 33014), (39, 33032), (40, 33035), (45, 33089), (46, 33155), (58, 33548), (59, 33581), (62, 33701), (69, 33935), (81, 34139), (82, 34142), (84, 34199), (85, 34202), (87, 34214), (88, 34238), (89, 34256), (90, 34259), (91, 34271), (96, 34304), (98, 34346), (107, 34472), (108, 34475), (109, 34640), (110, 34694), (114, 34757), (115, 34766), (119, 34940), (121, 35045), (125, 35156), (128, 35177), (134, 35300), (135, 35306), (138, 35348), (139, 35366), (147, 35510), (149, 35552), (153, 35657),

Gene: Mikro_86 Start: 33066, Stop: 36779, Start Num: 1

Candidate Starts for Mikro_86:

(Start: 1 @33066 has 173 MA's), (3, 33147), (5, 33168), (6, 33192), (9, 33264), (10, 33267), (11, 33279), (12, 33297), (13, 33300), (18, 33519), (20, 33657), (23, 33744), (25, 33792), (31, 33855), (33, 33885), (35, 33912), (37, 33921), (40, 33942), (45, 33996), (46, 34062), (58, 34455), (59, 34488), (62, 34608), (69, 34842), (81, 35046), (82, 35049), (84, 35106), (85, 35109), (87, 35121), (88, 35145), (89, 35163), (90, 35166), (91, 35178), (96, 35211), (98, 35253), (107, 35379), (108, 35382), (109, 35547), (110, 35601), (114, 35664), (115, 35673), (119, 35847), (121, 35952), (125, 36063), (128, 36084), (134, 36207), (135, 36213), (138, 36255), (139, 36273), (147, 36417), (149, 36459), (153, 36564),

Gene: MoMoMixon_89 Start: 32259, Stop: 35618, Start Num: 1

Candidate Starts for MoMoMixon_89:

(Start: 1 @32259 has 173 MA's), (3, 32340), (5, 32361), (6, 32385), (8, 32430), (9, 32457), (10, 32460), (11, 32472), (12, 32490), (13, 32493), (18, 32712), (20, 32850), (23, 32937), (25, 32985), (31, 33048), (33, 33078), (35, 33105), (37, 33114), (40, 33135), (45, 33189), (46, 33255), (57, 33633), (58, 33669), (64, 33945), (69, 34056), (81, 34260), (82, 34263), (84, 34320), (85, 34323), (87, 34335), (88, 34359), (89, 34377), (90, 34380), (91, 34392), (96, 34425), (98, 34467), (109, 34608), (110, 34662), (114,

34722), (115, 34731), (119, 34905), (121, 35010), (125, 35121), (128, 35142), (147, 35277), (149, 35319), (153, 35403),

Gene: Momo_87 Start: 31151, Stop: 34864, Start Num: 1

Candidate Starts for Momo_87:

(Start: 1 @31151 has 173 MA's), (3, 31232), (5, 31253), (6, 31277), (8, 31322), (9, 31349), (10, 31352), (11, 31364), (12, 31382), (13, 31385), (18, 31604), (20, 31742), (23, 31829), (25, 31877), (31, 31940), (33, 31970), (35, 31997), (37, 32006), (39, 32024), (40, 32027), (45, 32081), (46, 32147), (58, 32540), (59, 32573), (62, 32693), (69, 32927), (81, 33131), (82, 33134), (84, 33191), (85, 33194), (87, 33206), (88, 33230), (89, 33248), (90, 33251), (91, 33263), (96, 33296), (98, 33338), (107, 33464), (108, 33467), (109, 33632), (110, 33686), (114, 33749), (115, 33758), (119, 33932), (121, 34037), (125, 34148), (128, 34169), (134, 34292), (135, 34298), (138, 34340), (139, 34358), (147, 34502), (149, 34544), (153, 34649),

Gene: Morizzled23_88 Start: 31225, Stop: 34587, Start Num: 1

Candidate Starts for Morizzled23_88:

(Start: 1 @31225 has 173 MA's), (3, 31306), (5, 31327), (6, 31351), (8, 31396), (9, 31423), (10, 31426), (11, 31438), (12, 31456), (13, 31459), (18, 31678), (20, 31816), (23, 31903), (25, 31951), (31, 32014), (33, 32044), (35, 32071), (37, 32080), (40, 32101), (45, 32155), (46, 32221), (57, 32599), (58, 32635), (64, 32911), (69, 33022), (81, 33226), (82, 33229), (84, 33286), (85, 33289), (87, 33301), (88, 33325), (89, 33343), (90, 33346), (91, 33358), (96, 33391), (98, 33433), (109, 33574), (110, 33628), (114, 33691), (115, 33700), (119, 33874), (121, 33979), (125, 34090), (128, 34111), (147, 34246), (149, 34288), (153, 34372),

Gene: Myrna_87 Start: 33661, Stop: 37551, Start Num: 2

Candidate Starts for Myrna_87:

(Start: 2 @33661 has 2 MA's), (7, 33790), (13, 33895), (14, 33916), (15, 33931), (17, 34063), (23, 34345), (24, 34381), (32, 34480), (43, 34585), (59, 35089), (63, 35221), (66, 35311), (68, 35359), (70, 35371), (80, 35614), (87, 35785), (88, 35809), (92, 35848), (96, 35875), (97, 35893), (98, 35917), (100, 35932), (101, 35938), (104, 35959), (105, 36061), (106, 36118), (110, 36403), (112, 36448), (120, 36667), (121, 36733), (123, 36811), (124, 36835), (125, 36847), (127, 36853), (136, 36997), (144, 37153), (152, 37342),

Gene: Naija_87 Start: 31151, Stop: 34864, Start Num: 1

Candidate Starts for Naija_87:

(Start: 1 @31151 has 173 MA's), (3, 31232), (5, 31253), (6, 31277), (8, 31322), (9, 31349), (10, 31352), (11, 31364), (12, 31382), (13, 31385), (18, 31604), (20, 31742), (23, 31829), (25, 31877), (31, 31940), (33, 31970), (35, 31997), (37, 32006), (39, 32024), (40, 32027), (45, 32081), (46, 32147), (58, 32540), (59, 32573), (62, 32693), (69, 32927), (81, 33131), (82, 33134), (84, 33191), (85, 33194), (87, 33206), (88, 33230), (89, 33248), (90, 33251), (91, 33263), (96, 33296), (98, 33338), (107, 33464), (108, 33467), (109, 33632), (110, 33686), (114, 33749), (115, 33758), (119, 33932), (121, 34037), (125, 34148), (128, 34169), (134, 34292), (135, 34298), (138, 34340), (139, 34358), (147, 34502), (149, 34544), (153, 34649),

Gene: Napoleon13_84 Start: 29954, Stop: 33667, Start Num: 1

Candidate Starts for Napoleon13_84:

(Start: 1 @29954 has 173 MA's), (3, 30035), (5, 30056), (6, 30080), (8, 30125), (9, 30152), (10, 30155), (11, 30167), (12, 30185), (13, 30188), (18, 30407), (20, 30545), (23, 30632), (25, 30680), (31, 30743), (33, 30773), (35, 30800), (37, 30809), (39, 30827), (40, 30830), (45, 30884), (46, 30950), (58, 31343), (59, 31376), (62, 31496), (69, 31730), (81, 31934), (82, 31937), (84, 31994), (85, 31997), (87, 32009), (88, 32033), (89, 32051), (90, 32054), (91, 32066), (96, 32099), (98, 32141), (107, 32267), (108, 32270), (109, 32435), (110, 32489), (114, 32552), (115, 32561), (119, 32735), (121, 32840), (125, 32951), (128, 32972), (134, 33095), (135, 33101), (138, 33143), (139, 33161), (147, 33305), (149,

33347), (153, 33452),

Gene: Nappy_89 Start: 32448, Stop: 35960, Start Num: 1

Candidate Starts for Nappy_89:

(Start: 1 @32448 has 173 MA's), (3, 32529), (5, 32550), (6, 32574), (8, 32619), (9, 32646), (10, 32649), (11, 32661), (12, 32679), (13, 32682), (18, 32901), (20, 33039), (23, 33126), (25, 33174), (31, 33237), (33, 33267), (35, 33294), (37, 33303), (40, 33324), (45, 33378), (46, 33444), (58, 33837), (59, 33870), (62, 33990), (69, 34221), (81, 34425), (82, 34428), (84, 34485), (85, 34488), (87, 34500), (88, 34524), (89, 34542), (90, 34545), (91, 34557), (96, 34590), (98, 34632), (107, 34758), (108, 34761), (109, 34926), (110, 34980), (114, 35043), (115, 35052), (119, 35226), (121, 35331), (125, 35442), (128, 35463), (147, 35598), (149, 35640), (153, 35745),

Gene: Naval22_93 Start: 33750, Stop: 37463, Start Num: 1

Candidate Starts for Naval22_93:

(Start: 1 @33750 has 173 MA's), (3, 33831), (5, 33852), (6, 33876), (8, 33921), (9, 33948), (10, 33951), (11, 33963), (12, 33981), (13, 33984), (18, 34203), (20, 34341), (23, 34428), (25, 34476), (31, 34539), (33, 34569), (35, 34596), (37, 34605), (39, 34623), (40, 34626), (45, 34680), (46, 34746), (58, 35139), (59, 35172), (62, 35292), (69, 35526), (81, 35730), (82, 35733), (84, 35790), (85, 35793), (87, 35805), (88, 35829), (89, 35847), (90, 35850), (91, 35862), (96, 35895), (98, 35937), (107, 36063), (108, 36066), (109, 36231), (110, 36285), (114, 36348), (115, 36357), (119, 36531), (121, 36636), (125, 36747), (128, 36768), (134, 36891), (135, 36897), (138, 36939), (139, 36957), (147, 37101), (149, 37143), (153, 37248),

Gene: NedWong_89 Start: 32146, Stop: 35859, Start Num: 1

Candidate Starts for NedWong_89:

(Start: 1 @32146 has 173 MA's), (3, 32227), (5, 32248), (6, 32272), (8, 32317), (9, 32344), (10, 32347), (11, 32359), (12, 32377), (13, 32380), (18, 32599), (20, 32737), (23, 32824), (25, 32872), (31, 32935), (33, 32965), (35, 32992), (37, 33001), (39, 33019), (40, 33022), (45, 33076), (46, 33142), (58, 33535), (59, 33568), (62, 33688), (69, 33922), (81, 34126), (82, 34129), (84, 34186), (85, 34189), (87, 34201), (88, 34225), (89, 34243), (90, 34246), (91, 34258), (96, 34291), (98, 34333), (107, 34459), (108, 34462), (109, 34627), (110, 34681), (114, 34744), (115, 34753), (119, 34927), (121, 35032), (125, 35143), (128, 35164), (134, 35287), (135, 35293), (138, 35335), (139, 35353), (147, 35497), (149, 35539), (153, 35644),

Gene: Ngannou_84 Start: 30133, Stop: 33846, Start Num: 1

Candidate Starts for Ngannou_84:

(Start: 1 @30133 has 173 MA's), (3, 30214), (5, 30235), (6, 30259), (8, 30304), (9, 30331), (10, 30334), (11, 30346), (12, 30364), (13, 30367), (18, 30586), (20, 30724), (23, 30811), (25, 30859), (31, 30922), (33, 30952), (35, 30979), (37, 30988), (39, 31006), (40, 31009), (45, 31063), (46, 31129), (58, 31522), (59, 31555), (62, 31675), (69, 31909), (81, 32113), (82, 32116), (84, 32173), (85, 32176), (87, 32188), (88, 32212), (89, 32230), (90, 32233), (91, 32245), (96, 32278), (98, 32320), (107, 32446), (108, 32449), (109, 32614), (110, 32668), (114, 32731), (115, 32740), (119, 32914), (121, 33019), (125, 33130), (128, 33151), (134, 33274), (135, 33280), (138, 33322), (139, 33340), (147, 33484), (149, 33526), (153, 33631),

Gene: Nidhogg_89 Start: 32000, Stop: 35713, Start Num: 1

Candidate Starts for Nidhogg_89:

(Start: 1 @32000 has 173 MA's), (3, 32081), (5, 32102), (6, 32126), (8, 32171), (9, 32198), (10, 32201), (11, 32213), (12, 32231), (13, 32234), (18, 32453), (20, 32591), (23, 32678), (25, 32726), (31, 32789), (33, 32819), (35, 32846), (37, 32855), (39, 32873), (40, 32876), (45, 32930), (46, 32996), (58, 33389), (59, 33422), (62, 33542), (69, 33776), (81, 33980), (82, 33983), (84, 34040), (85, 34043), (87, 34055), (88, 34079), (89, 34097), (90, 34100), (91, 34112), (96, 34145), (98, 34187), (107, 34313), (108, 34316), (109, 34481), (110, 34535), (114, 34598), (115, 34607), (119, 34781), (121, 34886), (125,

34997), (128, 35018), (134, 35141), (135, 35147), (138, 35189), (139, 35207), (147, 35351), (149, 35393), (153, 35498),

Gene: NoodleTree_96 Start: 33177, Stop: 36890, Start Num: 1

Candidate Starts for NoodleTree_96:

(Start: 1 @33177 has 173 MA's), (3, 33258), (5, 33279), (6, 33303), (8, 33348), (9, 33375), (10, 33378), (11, 33390), (12, 33408), (13, 33411), (18, 33630), (20, 33768), (23, 33855), (25, 33903), (31, 33966), (33, 33996), (35, 34023), (37, 34032), (39, 34050), (40, 34053), (45, 34107), (46, 34173), (58, 34566), (59, 34599), (62, 34719), (69, 34953), (81, 35157), (82, 35160), (84, 35217), (85, 35220), (87, 35232), (88, 35256), (89, 35274), (90, 35277), (91, 35289), (96, 35322), (98, 35364), (107, 35490), (108, 35493), (109, 35658), (110, 35712), (114, 35775), (115, 35784), (119, 35958), (121, 36063), (125, 36174), (128, 36195), (134, 36318), (135, 36324), (138, 36366), (139, 36384), (147, 36528), (149, 36570), (153, 36675),

Gene: Norm_89 Start: 32148, Stop: 35861, Start Num: 1

Candidate Starts for Norm_89:

(Start: 1 @32148 has 173 MA's), (3, 32229), (5, 32250), (6, 32274), (8, 32319), (9, 32346), (10, 32349), (11, 32361), (12, 32379), (13, 32382), (18, 32601), (20, 32739), (23, 32826), (25, 32874), (31, 32937), (33, 32967), (35, 32994), (37, 33003), (39, 33021), (40, 33024), (45, 33078), (46, 33144), (58, 33537), (59, 33570), (62, 33690), (69, 33924), (81, 34128), (82, 34131), (84, 34188), (85, 34191), (87, 34203), (88, 34227), (89, 34245), (90, 34248), (91, 34260), (96, 34293), (98, 34335), (107, 34461), (108, 34464), (109, 34629), (110, 34683), (114, 34746), (115, 34755), (119, 34929), (121, 35034), (125, 35145), (128, 35166), (134, 35289), (135, 35295), (138, 35337), (139, 35355), (147, 35499), (149, 35541), (153, 35646),

Gene: NuevoMundo_94 Start: 34107, Stop: 37820, Start Num: 1

Candidate Starts for NuevoMundo_94:

(Start: 1 @34107 has 173 MA's), (3, 34188), (5, 34209), (6, 34233), (8, 34278), (9, 34305), (10, 34308), (11, 34320), (12, 34338), (13, 34341), (18, 34560), (20, 34698), (23, 34785), (25, 34833), (31, 34896), (33, 34926), (35, 34953), (37, 34962), (39, 34980), (40, 34983), (45, 35037), (46, 35103), (58, 35496), (59, 35529), (62, 35649), (69, 35883), (81, 36087), (82, 36090), (84, 36147), (85, 36150), (87, 36162), (88, 36186), (89, 36204), (90, 36207), (91, 36219), (96, 36252), (98, 36294), (107, 36420), (108, 36423), (109, 36588), (110, 36642), (114, 36705), (115, 36714), (119, 36888), (121, 36993), (125, 37104), (128, 37125), (134, 37248), (135, 37254), (138, 37296), (139, 37314), (147, 37458), (149, 37500), (153, 37605),

Gene: ParkTD_89 Start: 32142, Stop: 35855, Start Num: 1

Candidate Starts for ParkTD_89:

(Start: 1 @32142 has 173 MA's), (3, 32223), (5, 32244), (6, 32268), (8, 32313), (9, 32340), (10, 32343), (11, 32355), (12, 32373), (13, 32376), (18, 32595), (20, 32733), (23, 32820), (25, 32868), (31, 32931), (33, 32961), (35, 32988), (37, 32997), (39, 33015), (40, 33018), (45, 33072), (46, 33138), (58, 33531), (59, 33564), (62, 33684), (69, 33918), (81, 34122), (82, 34125), (84, 34182), (85, 34185), (87, 34197), (88, 34221), (89, 34239), (90, 34242), (91, 34254), (96, 34287), (98, 34329), (107, 34455), (108, 34458), (109, 34623), (110, 34677), (114, 34740), (115, 34749), (119, 34923), (121, 35028), (125, 35139), (128, 35160), (134, 35283), (135, 35289), (138, 35331), (139, 35349), (147, 35493), (149, 35535), (153, 35640),

Gene: Patter_88 Start: 31168, Stop: 34881, Start Num: 1

Candidate Starts for Patter_88:

(Start: 1 @31168 has 173 MA's), (3, 31249), (5, 31270), (6, 31294), (8, 31339), (9, 31366), (10, 31369), (11, 31381), (12, 31399), (13, 31402), (18, 31621), (20, 31759), (23, 31846), (25, 31894), (31, 31957), (33, 31987), (35, 32014), (37, 32023), (39, 32041), (40, 32044), (45, 32098), (46, 32164), (58, 32557), (59, 32590), (62, 32710), (69, 32944), (81, 33148), (82, 33151), (84, 33208), (85, 33211), (87, 33223),

(88, 33247), (89, 33265), (90, 33268), (91, 33280), (96, 33313), (98, 33355), (107, 33481), (108, 33484), (109, 33649), (110, 33703), (114, 33766), (115, 33775), (119, 33949), (121, 34054), (125, 34165), (128, 34186), (134, 34309), (135, 34315), (138, 34357), (139, 34375), (147, 34519), (149, 34561), (153, 34666),

Gene: Phabba_92 Start: 33179, Stop: 36631, Start Num: 2

Candidate Starts for Phabba_92:

(Start: 2 @33179 has 2 MA's), (7, 33308), (9, 33377), (13, 33413), (14, 33434), (15, 33449), (17, 33584), (23, 33731), (24, 33767), (37, 33908), (51, 34295), (59, 34499), (60, 34571), (63, 34631), (66, 34721), (68, 34769), (70, 34781), (73, 34883), (74, 34889), (75, 34910), (76, 34916), (87, 35183), (88, 35207), (92, 35246), (96, 35273), (97, 35291), (98, 35315), (103, 35351), (113, 35687), (117, 35825), (120, 35903), (121, 35969), (123, 36047), (124, 36071), (125, 36083), (127, 36089), (136, 36233), (152, 36425),

Gene: Phlegm_90 Start: 31151, Stop: 34864, Start Num: 1

Candidate Starts for Phlegm_90:

(Start: 1 @31151 has 173 MA's), (3, 31232), (5, 31253), (6, 31277), (8, 31322), (9, 31349), (10, 31352), (11, 31364), (12, 31382), (13, 31385), (18, 31604), (20, 31742), (23, 31829), (25, 31877), (31, 31940), (33, 31970), (35, 31997), (37, 32006), (39, 32024), (40, 32027), (45, 32081), (46, 32147), (58, 32540), (59, 32573), (62, 32693), (69, 32927), (81, 33131), (82, 33134), (84, 33191), (85, 33194), (87, 33206), (88, 33230), (89, 33248), (90, 33251), (91, 33263), (96, 33296), (98, 33338), (107, 33464), (108, 33467), (109, 33632), (110, 33686), (114, 33749), (115, 33758), (119, 33932), (121, 34037), (125, 34148), (128, 34169), (134, 34292), (135, 34298), (138, 34340), (139, 34358), (147, 34502), (149, 34544), (153, 34649),

Gene: Phox_85 Start: 32036, Stop: 35746, Start Num: 1

Candidate Starts for Phox_85:

(Start: 1 @32036 has 173 MA's), (3, 32117), (5, 32138), (6, 32162), (8, 32207), (9, 32234), (10, 32237), (11, 32249), (12, 32267), (13, 32270), (18, 32489), (20, 32627), (23, 32714), (25, 32762), (31, 32825), (33, 32855), (35, 32882), (37, 32891), (40, 32912), (45, 32966), (46, 33032), (57, 33380), (58, 33416), (64, 33692), (69, 33803), (81, 34007), (82, 34010), (84, 34067), (85, 34070), (87, 34082), (88, 34106), (89, 34124), (90, 34127), (91, 34139), (96, 34172), (98, 34214), (107, 34340), (108, 34343), (109, 34508), (114, 34625), (115, 34634), (119, 34808), (121, 34913), (125, 35024), (128, 35045), (129, 35108), (132, 35174), (133, 35180), (140, 35273), (147, 35405), (149, 35447), (153, 35531),

Gene: Phusco_88 Start: 31919, Stop: 35629, Start Num: 1

Candidate Starts for Phusco_88:

(Start: 1 @31919 has 173 MA's), (3, 32000), (5, 32021), (6, 32045), (8, 32090), (9, 32117), (10, 32120), (11, 32132), (12, 32150), (13, 32153), (18, 32372), (20, 32510), (23, 32597), (25, 32645), (31, 32708), (33, 32738), (35, 32765), (37, 32774), (40, 32795), (45, 32849), (46, 32915), (58, 33308), (59, 33341), (62, 33461), (69, 33692), (81, 33896), (82, 33899), (84, 33956), (85, 33959), (87, 33971), (88, 33995), (89, 34013), (90, 34016), (91, 34028), (96, 34061), (98, 34103), (107, 34229), (108, 34232), (109, 34397), (114, 34514), (115, 34523), (119, 34697), (121, 34802), (125, 34913), (128, 34934), (134, 35057), (135, 35063), (138, 35105), (139, 35123), (147, 35267), (149, 35309), (153, 35414),

Gene: Pier_92 Start: 32339, Stop: 36052, Start Num: 1

Candidate Starts for Pier_92:

(Start: 1 @32339 has 173 MA's), (3, 32420), (5, 32441), (6, 32465), (9, 32537), (10, 32540), (11, 32552), (12, 32570), (13, 32573), (18, 32792), (20, 32930), (23, 33017), (25, 33065), (31, 33128), (33, 33158), (35, 33185), (37, 33194), (39, 33212), (40, 33215), (45, 33269), (46, 33335), (58, 33728), (59, 33761), (62, 33881), (69, 34115), (81, 34319), (82, 34322), (84, 34379), (85, 34382), (87, 34394), (88, 34418), (89, 34436), (90, 34439), (91, 34451), (96, 34484), (98, 34526), (107, 34652), (108, 34655), (109, 34820), (110, 34874), (114, 34937), (115, 34946), (119, 35120), (121, 35225), (125, 35336),

(128, 35357), (134, 35480), (135, 35486), (138, 35528), (139, 35546), (147, 35690), (149, 35732), (153, 35837),

Gene: Pinkcreek_79 Start: 29119, Stop: 32829, Start Num: 1

Candidate Starts for Pinkcreek_79:

(Start: 1 @29119 has 173 MA's), (3, 29200), (5, 29221), (6, 29245), (8, 29290), (9, 29317), (10, 29320), (11, 29332), (12, 29350), (13, 29353), (18, 29572), (20, 29710), (23, 29797), (25, 29845), (31, 29908), (33, 29938), (35, 29965), (37, 29974), (40, 29995), (45, 30049), (46, 30115), (57, 30463), (58, 30499), (64, 30775), (69, 30886), (81, 31090), (82, 31093), (84, 31150), (85, 31153), (87, 31165), (88, 31189), (89, 31207), (90, 31210), (91, 31222), (96, 31255), (98, 31297), (107, 31423), (108, 31426), (109, 31591), (114, 31708), (115, 31717), (119, 31891), (121, 31996), (125, 32107), (128, 32128), (129, 32191), (132, 32257), (133, 32263), (140, 32356), (147, 32488), (149, 32530), (153, 32614),

Gene: Pio_92 Start: 33075, Stop: 36788, Start Num: 1

Candidate Starts for Pio_92:

(Start: 1 @33075 has 173 MA's), (3, 33156), (5, 33177), (6, 33201), (8, 33246), (9, 33273), (10, 33276), (11, 33288), (12, 33306), (13, 33309), (18, 33528), (20, 33666), (23, 33753), (25, 33801), (31, 33864), (33, 33894), (35, 33921), (37, 33930), (39, 33948), (40, 33951), (45, 34005), (46, 34071), (58, 34464), (59, 34497), (62, 34617), (69, 34851), (81, 35055), (82, 35058), (84, 35115), (85, 35118), (87, 35130), (88, 35154), (89, 35172), (90, 35175), (91, 35187), (96, 35220), (98, 35262), (107, 35388), (108, 35391), (109, 35556), (110, 35610), (114, 35673), (115, 35682), (119, 35856), (121, 35961), (125, 36072), (128, 36093), (134, 36216), (135, 36222), (138, 36264), (139, 36282), (147, 36426), (149, 36468), (153, 36573),

Gene: Pivoine_87 Start: 31151, Stop: 34864, Start Num: 1

Candidate Starts for Pivoine_87:

(Start: 1 @31151 has 173 MA's), (3, 31232), (5, 31253), (6, 31277), (8, 31322), (9, 31349), (10, 31352), (11, 31364), (12, 31382), (13, 31385), (18, 31604), (20, 31742), (23, 31829), (25, 31877), (31, 31940), (33, 31970), (35, 31997), (37, 32006), (39, 32024), (40, 32027), (45, 32081), (46, 32147), (58, 32540), (59, 32573), (62, 32693), (69, 32927), (81, 33131), (82, 33134), (84, 33191), (85, 33194), (87, 33206), (88, 33230), (89, 33248), (90, 33251), (91, 33263), (96, 33296), (98, 33338), (107, 33464), (108, 33467), (109, 33632), (110, 33686), (114, 33749), (115, 33758), (119, 33932), (121, 34037), (125, 34148), (128, 34169), (134, 34292), (135, 34298), (138, 34340), (139, 34358), (147, 34502), (149, 34544), (153, 34649),

Gene: Pleione_91 Start: 32145, Stop: 35858, Start Num: 1

Candidate Starts for Pleione_91:

(Start: 1 @32145 has 173 MA's), (3, 32226), (5, 32247), (6, 32271), (8, 32316), (9, 32343), (10, 32346), (11, 32358), (12, 32376), (13, 32379), (18, 32598), (20, 32736), (23, 32823), (25, 32871), (31, 32934), (33, 32964), (35, 32991), (37, 33000), (39, 33018), (40, 33021), (45, 33075), (46, 33141), (58, 33534), (59, 33567), (62, 33687), (69, 33921), (81, 34125), (82, 34128), (84, 34185), (85, 34188), (87, 34200), (88, 34224), (89, 34242), (90, 34245), (91, 34257), (96, 34290), (98, 34332), (107, 34458), (108, 34461), (109, 34626), (110, 34680), (114, 34743), (115, 34752), (119, 34926), (121, 35031), (125, 35142), (128, 35163), (134, 35286), (135, 35292), (138, 35334), (139, 35352), (147, 35496), (149, 35538), (153, 35643),

Gene: Primadonna_82 Start: 31040, Stop: 34750, Start Num: 1

Candidate Starts for Primadonna_82:

(Start: 1 @31040 has 173 MA's), (3, 31121), (5, 31142), (6, 31166), (8, 31211), (9, 31238), (10, 31241), (11, 31253), (12, 31271), (13, 31274), (18, 31493), (20, 31631), (23, 31718), (25, 31766), (31, 31829), (33, 31859), (35, 31886), (37, 31895), (40, 31916), (45, 31970), (46, 32036), (58, 32429), (59, 32462), (62, 32582), (69, 32813), (81, 33017), (82, 33020), (84, 33077), (85, 33080), (87, 33092), (88, 33116), (89, 33134), (90, 33137), (91, 33149), (96, 33182), (98, 33224), (107, 33350), (108, 33353), (109,

33518), (114, 33635), (115, 33644), (119, 33818), (121, 33923), (125, 34034), (128, 34055), (134, 34178), (135, 34184), (138, 34226), (139, 34244), (147, 34388), (149, 34430), (153, 34535),

Gene: Pupper_86 Start: 33513, Stop: 36311, Start Num: 22

Candidate Starts for Pupper_86:

(Start: 22 @33513 has 4 MA's), (26, 33594), (27, 33606), (34, 33684), (41, 33747), (42, 33756), (44, 33768), (47, 33831), (48, 33990), (49, 33996), (52, 34101), (69, 34590), (70, 34593), (71, 34626), (83, 34863), (85, 34887), (87, 34899), (95, 34983), (99, 35034), (122, 35625), (123, 35631), (126, 35670), (127, 35673), (131, 35769), (143, 35913), (148, 35985), (150, 36054), (151, 36075), (152, 36114), (155, 36210), (156, 36225),

Gene: PurduePete_88 Start: 32190, Stop: 35903, Start Num: 1

Candidate Starts for PurduePete_88:

(Start: 1 @32190 has 173 MA's), (3, 32271), (5, 32292), (6, 32316), (8, 32361), (9, 32388), (10, 32391), (11, 32403), (12, 32421), (13, 32424), (18, 32643), (20, 32781), (23, 32868), (25, 32916), (31, 32979), (33, 33009), (35, 33036), (37, 33045), (39, 33063), (40, 33066), (45, 33120), (46, 33186), (58, 33579), (59, 33612), (62, 33732), (69, 33966), (81, 34170), (82, 34173), (84, 34230), (85, 34233), (87, 34245), (88, 34269), (89, 34287), (90, 34290), (91, 34302), (96, 34335), (98, 34377), (107, 34503), (108, 34506), (109, 34671), (110, 34725), (114, 34788), (115, 34797), (119, 34971), (121, 35076), (125, 35187), (128, 35208), (134, 35331), (135, 35337), (138, 35379), (139, 35397), (147, 35541), (149, 35583), (153, 35688),

Gene: QBert_82 Start: 31642, Stop: 35355, Start Num: 1

Candidate Starts for QBert_82:

(Start: 1 @31642 has 173 MA's), (3, 31723), (5, 31744), (6, 31768), (8, 31813), (9, 31840), (10, 31843), (11, 31855), (12, 31873), (13, 31876), (18, 32095), (20, 32233), (23, 32320), (25, 32368), (31, 32431), (33, 32461), (35, 32488), (37, 32497), (40, 32518), (45, 32572), (46, 32638), (58, 33031), (59, 33064), (62, 33184), (69, 33418), (81, 33622), (82, 33625), (84, 33682), (85, 33685), (87, 33697), (88, 33721), (89, 33739), (90, 33742), (91, 33754), (96, 33787), (98, 33829), (107, 33955), (108, 33958), (109, 34123), (114, 34240), (115, 34249), (119, 34423), (121, 34528), (125, 34639), (128, 34660), (134, 34783), (135, 34789), (138, 34831), (139, 34849), (147, 34993), (149, 35035), (153, 35140),

Gene: Quasimodo_88 Start: 32074, Stop: 35415, Start Num: 1

Candidate Starts for Quasimodo_88:

(Start: 1 @32074 has 173 MA's), (3, 32155), (5, 32176), (6, 32200), (8, 32245), (9, 32272), (10, 32275), (11, 32287), (12, 32305), (13, 32308), (18, 32527), (20, 32665), (23, 32752), (25, 32800), (31, 32863), (33, 32893), (35, 32920), (37, 32929), (40, 32950), (45, 33004), (46, 33070), (58, 33463), (59, 33496), (64, 33742), (69, 33853), (81, 34057), (82, 34060), (84, 34117), (85, 34120), (87, 34132), (88, 34156), (89, 34174), (90, 34177), (91, 34189), (96, 34222), (98, 34264), (109, 34405), (110, 34459), (114, 34519), (115, 34528), (119, 34702), (121, 34807), (125, 34918), (128, 34939), (147, 35074), (149, 35116), (153, 35200),

Gene: Rabinovish_85 Start: 32386, Stop: 35718, Start Num: 1

Candidate Starts for Rabinovish_85:

(Start: 1 @32386 has 173 MA's), (3, 32467), (5, 32488), (6, 32512), (8, 32557), (9, 32584), (10, 32587), (11, 32599), (12, 32617), (13, 32620), (18, 32839), (20, 32977), (23, 33064), (25, 33112), (31, 33175), (33, 33205), (35, 33232), (37, 33241), (40, 33262), (45, 33316), (46, 33382), (57, 33730), (58, 33766), (64, 34042), (69, 34153), (81, 34357), (82, 34360), (84, 34417), (85, 34420), (87, 34432), (88, 34456), (89, 34474), (90, 34477), (91, 34489), (96, 34522), (98, 34564), (109, 34705), (110, 34759), (114, 34822), (115, 34831), (119, 35005), (121, 35110), (125, 35221), (128, 35242), (147, 35377), (149, 35419), (153, 35503),

Gene: Rahel_87 Start: 30707, Stop: 34417, Start Num: 1

Candidate Starts for Rahel_87:

(Start: 1 @30707 has 173 MA's), (3, 30788), (5, 30809), (6, 30833), (8, 30878), (9, 30905), (10, 30908), (11, 30920), (12, 30938), (13, 30941), (18, 31160), (20, 31298), (23, 31385), (25, 31433), (31, 31496), (33, 31526), (35, 31553), (37, 31562), (40, 31583), (45, 31637), (46, 31703), (58, 32096), (59, 32129), (62, 32249), (69, 32480), (81, 32684), (82, 32687), (84, 32744), (85, 32747), (87, 32759), (88, 32783), (89, 32801), (90, 32804), (91, 32816), (96, 32849), (98, 32891), (107, 33017), (108, 33020), (109, 33185), (114, 33302), (115, 33311), (119, 33485), (121, 33590), (125, 33701), (128, 33722), (134, 33845), (135, 33851), (138, 33893), (139, 33911), (147, 34055), (149, 34097), (153, 34202),

Gene: Rizal_86 Start: 31063, Stop: 34776, Start Num: 1

Candidate Starts for Rizal_86:

(Start: 1 @31063 has 173 MA's), (3, 31144), (5, 31165), (6, 31189), (8, 31234), (9, 31261), (10, 31264), (11, 31276), (12, 31294), (13, 31297), (18, 31516), (20, 31654), (23, 31741), (25, 31789), (31, 31852), (33, 31882), (35, 31909), (37, 31918), (39, 31936), (40, 31939), (45, 31993), (46, 32059), (58, 32452), (59, 32485), (62, 32605), (69, 32839), (81, 33043), (82, 33046), (84, 33103), (85, 33106), (87, 33118), (88, 33142), (89, 33160), (90, 33163), (91, 33175), (96, 33208), (98, 33250), (107, 33376), (108, 33379), (109, 33544), (110, 33598), (114, 33661), (115, 33670), (119, 33844), (121, 33949), (125, 34060), (128, 34081), (134, 34204), (135, 34210), (138, 34252), (139, 34270), (147, 34414), (149, 34456), (153, 34561),

Gene: RoMag_83 Start: 31501, Stop: 35214, Start Num: 1

Candidate Starts for RoMag_83:

(Start: 1 @31501 has 173 MA's), (3, 31582), (5, 31603), (6, 31627), (9, 31699), (10, 31702), (11, 31714), (12, 31732), (13, 31735), (18, 31954), (20, 32092), (23, 32179), (25, 32227), (31, 32290), (33, 32320), (35, 32347), (37, 32356), (40, 32377), (45, 32431), (46, 32497), (58, 32890), (59, 32923), (62, 33043), (69, 33277), (81, 33481), (82, 33484), (84, 33541), (85, 33544), (87, 33556), (88, 33580), (89, 33598), (90, 33601), (91, 33613), (96, 33646), (98, 33688), (107, 33814), (108, 33817), (109, 33982), (110, 34036), (114, 34099), (115, 34108), (119, 34282), (121, 34387), (125, 34498), (128, 34519), (134, 34642), (135, 34648), (138, 34690), (139, 34708), (147, 34852), (149, 34894), (153, 34999),

Gene: Ronan_81 Start: 28948, Stop: 32661, Start Num: 1

Candidate Starts for Ronan_81:

(Start: 1 @28948 has 173 MA's), (3, 29029), (5, 29050), (6, 29074), (8, 29119), (9, 29146), (10, 29149), (11, 29161), (12, 29179), (13, 29182), (18, 29401), (20, 29539), (23, 29626), (25, 29674), (31, 29737), (33, 29767), (35, 29794), (37, 29803), (40, 29824), (45, 29878), (46, 29944), (58, 30337), (59, 30370), (62, 30490), (69, 30724), (81, 30928), (82, 30931), (84, 30988), (85, 30991), (87, 31003), (88, 31027), (89, 31045), (90, 31048), (91, 31060), (96, 31093), (98, 31135), (107, 31261), (108, 31264), (109, 31429), (114, 31546), (115, 31555), (119, 31729), (121, 31834), (125, 31945), (128, 31966), (134, 32089), (135, 32095), (138, 32137), (139, 32155), (147, 32299), (149, 32341), (153, 32446),

Gene: Roots515_87 Start: 31568, Stop: 35281, Start Num: 1

Candidate Starts for Roots515_87:

(Start: 1 @31568 has 173 MA's), (3, 31649), (5, 31670), (6, 31694), (8, 31739), (9, 31766), (10, 31769), (11, 31781), (12, 31799), (13, 31802), (18, 32021), (20, 32159), (23, 32246), (25, 32294), (31, 32357), (33, 32387), (35, 32414), (37, 32423), (39, 32441), (40, 32444), (45, 32498), (46, 32564), (58, 32957), (59, 32990), (62, 33110), (69, 33344), (81, 33548), (82, 33551), (84, 33608), (85, 33611), (87, 33623), (88, 33647), (89, 33665), (90, 33668), (91, 33680), (96, 33713), (98, 33755), (107, 33881), (108, 33884), (109, 34049), (110, 34103), (114, 34166), (115, 34175), (119, 34349), (121, 34454), (125, 34565), (128, 34586), (134, 34709), (135, 34715), (138, 34757), (139, 34775), (147, 34919), (149, 34961), (153, 35066),

Gene: SCentae_84 Start: 33187, Stop: 35985, Start Num: 22

Candidate Starts for SCentae_84:

(Start: 22 @33187 has 4 MA's), (26, 33268), (27, 33280), (34, 33358), (41, 33421), (42, 33430), (44, 33442), (47, 33505), (48, 33664), (49, 33670), (52, 33775), (69, 34264), (70, 34267), (71, 34300), (83, 34537), (85, 34561), (87, 34573), (95, 34657), (99, 34708), (122, 35299), (123, 35305), (126, 35344), (127, 35347), (131, 35443), (143, 35587), (148, 35659), (150, 35728), (151, 35749), (152, 35788), (155, 35884), (156, 35899),

Gene: SVoro_86 Start: 32140, Stop: 35853, Start Num: 1

Candidate Starts for SVoro_86:

(Start: 1 @32140 has 173 MA's), (3, 32221), (5, 32242), (6, 32266), (8, 32311), (9, 32338), (10, 32341), (11, 32353), (12, 32371), (13, 32374), (18, 32593), (20, 32731), (23, 32818), (25, 32866), (31, 32929), (33, 32959), (35, 32986), (37, 32995), (39, 33013), (40, 33016), (45, 33070), (46, 33136), (58, 33529), (59, 33562), (62, 33682), (69, 33916), (81, 34120), (82, 34123), (84, 34180), (85, 34183), (87, 34195), (88, 34219), (89, 34237), (90, 34240), (91, 34252), (96, 34285), (98, 34327), (107, 34453), (108, 34456), (109, 34621), (110, 34675), (114, 34738), (115, 34747), (119, 34921), (121, 35026), (125, 35137), (128, 35158), (134, 35281), (135, 35287), (138, 35329), (139, 35347), (147, 35491), (149, 35533), (153, 35638),

Gene: Salacia_92 Start: 32263, Stop: 35973, Start Num: 1

Candidate Starts for Salacia_92:

(Start: 1 @32263 has 173 MA's), (3, 32344), (5, 32365), (6, 32389), (8, 32434), (9, 32461), (10, 32464), (11, 32476), (12, 32494), (13, 32497), (18, 32716), (20, 32854), (23, 32941), (25, 32989), (31, 33052), (33, 33082), (35, 33109), (37, 33118), (40, 33139), (45, 33193), (46, 33259), (58, 33652), (59, 33685), (62, 33805), (69, 34036), (81, 34240), (82, 34243), (84, 34300), (85, 34303), (87, 34315), (88, 34339), (89, 34357), (90, 34360), (91, 34372), (96, 34405), (98, 34447), (107, 34573), (108, 34576), (109, 34741), (114, 34858), (115, 34867), (119, 35041), (121, 35146), (125, 35257), (128, 35278), (134, 35401), (135, 35407), (138, 35449), (139, 35467), (147, 35611), (149, 35653), (153, 35758),

Gene: Sauce_88 Start: 30996, Stop: 34709, Start Num: 1

Candidate Starts for Sauce_88:

(Start: 1 @30996 has 173 MA's), (3, 31077), (5, 31098), (6, 31122), (8, 31167), (9, 31194), (10, 31197), (11, 31209), (12, 31227), (13, 31230), (18, 31449), (20, 31587), (23, 31674), (25, 31722), (31, 31785), (33, 31815), (35, 31842), (37, 31851), (40, 31872), (45, 31926), (46, 31992), (58, 32385), (59, 32418), (62, 32538), (69, 32772), (81, 32976), (82, 32979), (84, 33036), (85, 33039), (87, 33051), (88, 33075), (89, 33093), (90, 33096), (91, 33108), (96, 33141), (98, 33183), (107, 33309), (108, 33312), (109, 33477), (114, 33594), (115, 33603), (119, 33777), (121, 33882), (125, 33993), (128, 34014), (134, 34137), (135, 34143), (138, 34185), (139, 34203), (147, 34347), (149, 34389), (153, 34494),

Gene: ScoobyDoobyDoo_81 Start: 30092, Stop: 33598, Start Num: 1

Candidate Starts for ScoobyDoobyDoo_81:

(Start: 1 @30092 has 173 MA's), (4, 30185), (7, 30221), (12, 30323), (13, 30326), (14, 30347), (16, 30461), (21, 30587), (23, 30620), (29, 30716), (33, 30761), (43, 30860), (53, 31235), (61, 31484), (63, 31667), (65, 31739), (66, 31757), (68, 31805), (72, 31898), (77, 31970), (78, 32015), (79, 32030), (85, 32210), (87, 32222), (88, 32246), (96, 32312), (98, 32354), (100, 32369), (101, 32375), (113, 32738), (116, 32789), (120, 32954), (121, 33020), (123, 33098), (124, 33122), (125, 33134), (127, 33140), (136, 33254), (152, 33389),

Gene: ScottMcG_85 Start: 31500, Stop: 34862, Start Num: 1

Candidate Starts for ScottMcG_85:

(Start: 1 @31500 has 173 MA's), (3, 31581), (5, 31602), (6, 31626), (8, 31671), (9, 31698), (10, 31701), (11, 31713), (12, 31731), (13, 31734), (18, 31953), (20, 32091), (23, 32178), (25, 32226), (31, 32289), (33, 32319), (35, 32346), (37, 32355), (40, 32376), (45, 32430), (46, 32496), (57, 32874), (58, 32910), (64, 33186), (69, 33297), (81, 33501), (82, 33504), (84, 33561), (85, 33564), (87, 33576), (88, 33600), (89, 33618), (90, 33621), (91, 33633), (96, 33666), (98, 33708), (109, 33849), (110, 33903), (114,

33966), (115, 33975), (119, 34149), (121, 34254), (125, 34365), (128, 34386), (147, 34521), (149, 34563), (153, 34647),

Gene: Sebata_89 Start: 32632, Stop: 36345, Start Num: 1

Candidate Starts for Sebata_89:

(Start: 1 @32632 has 173 MA's), (3, 32713), (5, 32734), (6, 32758), (8, 32803), (9, 32830), (10, 32833), (11, 32845), (12, 32863), (13, 32866), (18, 33085), (20, 33223), (23, 33310), (25, 33358), (31, 33421), (33, 33451), (35, 33478), (37, 33487), (40, 33508), (45, 33562), (46, 33628), (58, 34021), (59, 34054), (62, 34174), (69, 34408), (81, 34612), (82, 34615), (84, 34672), (85, 34675), (87, 34687), (88, 34711), (89, 34729), (90, 34732), (91, 34744), (96, 34777), (98, 34819), (107, 34945), (108, 34948), (109, 35113), (114, 35230), (115, 35239), (119, 35413), (121, 35518), (125, 35629), (128, 35650), (134, 35773), (135, 35779), (138, 35821), (139, 35839), (147, 35983), (149, 36025), (153, 36130),

Gene: Shaqnato_80 Start: 29871, Stop: 33584, Start Num: 1

Candidate Starts for Shaqnato_80:

(Start: 1 @29871 has 173 MA's), (3, 29952), (5, 29973), (6, 29997), (8, 30042), (9, 30069), (10, 30072), (11, 30084), (12, 30102), (13, 30105), (18, 30324), (20, 30462), (23, 30549), (25, 30597), (31, 30660), (33, 30690), (35, 30717), (37, 30726), (40, 30747), (45, 30801), (46, 30867), (58, 31260), (59, 31293), (62, 31413), (69, 31647), (81, 31851), (82, 31854), (84, 31911), (85, 31914), (87, 31926), (88, 31950), (89, 31968), (90, 31971), (91, 31983), (96, 32016), (98, 32058), (107, 32184), (108, 32187), (109, 32352), (114, 32469), (115, 32478), (119, 32652), (121, 32757), (125, 32868), (128, 32889), (134, 33012), (135, 33018), (138, 33060), (139, 33078), (147, 33222), (149, 33264), (153, 33369),

Gene: Shelob_90 Start: 33138, Stop: 36851, Start Num: 1

Candidate Starts for Shelob_90:

(Start: 1 @33138 has 173 MA's), (3, 33219), (5, 33240), (6, 33264), (8, 33309), (9, 33336), (10, 33339), (11, 33351), (12, 33369), (13, 33372), (18, 33591), (20, 33729), (23, 33816), (25, 33864), (31, 33927), (33, 33957), (35, 33984), (37, 33993), (39, 34011), (40, 34014), (45, 34068), (46, 34134), (58, 34527), (59, 34560), (62, 34680), (69, 34914), (81, 35118), (82, 35121), (84, 35178), (85, 35181), (87, 35193), (88, 35217), (89, 35235), (90, 35238), (91, 35250), (96, 35283), (98, 35325), (107, 35451), (108, 35454), (109, 35619), (110, 35673), (114, 35736), (115, 35745), (119, 35919), (121, 36024), (125, 36135), (128, 36156), (134, 36279), (135, 36285), (138, 36327), (139, 36345), (147, 36489), (149, 36531), (153, 36636),

Gene: ShiaLabeouf_88 Start: 31546, Stop: 35256, Start Num: 1

Candidate Starts for ShiaLabeouf_88:

(Start: 1 @31546 has 173 MA's), (3, 31627), (5, 31648), (6, 31672), (9, 31744), (10, 31747), (11, 31759), (12, 31777), (13, 31780), (18, 31999), (20, 32137), (23, 32224), (25, 32272), (31, 32335), (33, 32365), (35, 32392), (37, 32401), (40, 32422), (45, 32476), (46, 32542), (58, 32935), (59, 32968), (62, 33088), (69, 33319), (81, 33523), (82, 33526), (84, 33583), (85, 33586), (87, 33598), (88, 33622), (89, 33640), (90, 33643), (91, 33655), (96, 33688), (98, 33730), (107, 33856), (108, 33859), (109, 34024), (114, 34141), (115, 34150), (119, 34324), (121, 34429), (125, 34540), (128, 34561), (134, 34684), (135, 34690), (138, 34732), (139, 34750), (147, 34894), (149, 34936), (153, 35041),

Gene: Shifa_77 Start: 29738, Stop: 33316, Start Num: 1

Candidate Starts for Shifa_77:

(Start: 1 @29738 has 173 MA's), (3, 29819), (5, 29840), (6, 29864), (8, 29909), (9, 29936), (10, 29939), (11, 29951), (12, 29969), (13, 29972), (18, 30191), (20, 30329), (23, 30416), (25, 30464), (31, 30527), (33, 30557), (35, 30584), (37, 30593), (39, 30611), (40, 30614), (45, 30668), (46, 30734), (58, 31142), (59, 31175), (62, 31295), (64, 31418), (69, 31529), (81, 31733), (82, 31736), (84, 31793), (85, 31796), (87, 31808), (88, 31832), (89, 31850), (90, 31853), (91, 31865), (96, 31898), (98, 31940), (109, 32081), (110, 32135), (114, 32195), (115, 32204), (119, 32378), (121, 32483), (125, 32594), (128, 32615), (129, 32678), (132, 32744), (133, 32750), (140, 32843), (147, 32975), (149, 33017), (153, 33101),

Gene: Shnickers_88 Start: 31106, Stop: 34816, Start Num: 1

Candidate Starts for Shnickers_88:

(Start: 1 @31106 has 173 MA's), (3, 31187), (5, 31208), (6, 31232), (9, 31304), (10, 31307), (11, 31319), (12, 31337), (13, 31340), (18, 31559), (20, 31697), (23, 31784), (25, 31832), (31, 31895), (33, 31925), (35, 31952), (37, 31961), (40, 31982), (45, 32036), (46, 32102), (58, 32495), (59, 32528), (62, 32648), (69, 32879), (81, 33083), (82, 33086), (84, 33143), (85, 33146), (87, 33158), (88, 33182), (89, 33200), (90, 33203), (91, 33215), (96, 33248), (98, 33290), (107, 33416), (108, 33419), (109, 33584), (114, 33701), (115, 33710), (119, 33884), (121, 33989), (125, 34100), (128, 34121), (134, 34244), (135, 34250), (138, 34292), (139, 34310), (147, 34454), (149, 34496), (153, 34601),

Gene: Shrimp_88 Start: 32150, Stop: 35863, Start Num: 1

Candidate Starts for Shrimp_88:

(Start: 1 @32150 has 173 MA's), (3, 32231), (5, 32252), (6, 32276), (8, 32321), (9, 32348), (10, 32351), (11, 32363), (12, 32381), (13, 32384), (18, 32603), (20, 32741), (23, 32828), (25, 32876), (31, 32939), (33, 32969), (35, 32996), (37, 33005), (39, 33023), (40, 33026), (45, 33080), (46, 33146), (58, 33539), (59, 33572), (62, 33692), (69, 33926), (81, 34130), (82, 34133), (84, 34190), (85, 34193), (87, 34205), (88, 34229), (89, 34247), (90, 34250), (91, 34262), (96, 34295), (98, 34337), (107, 34463), (108, 34466), (109, 34631), (110, 34685), (114, 34748), (115, 34757), (119, 34931), (121, 35036), (125, 35147), (128, 35168), (134, 35291), (135, 35297), (138, 35339), (139, 35357), (147, 35501), (149, 35543), (153, 35648),

Gene: SilverDipper_89 Start: 31151, Stop: 34864, Start Num: 1

Candidate Starts for SilverDipper_89:

(Start: 1 @31151 has 173 MA's), (3, 31232), (5, 31253), (6, 31277), (8, 31322), (9, 31349), (10, 31352), (11, 31364), (12, 31382), (13, 31385), (18, 31604), (20, 31742), (23, 31829), (25, 31877), (31, 31940), (33, 31970), (35, 31997), (37, 32006), (39, 32024), (40, 32027), (45, 32081), (46, 32147), (58, 32540), (59, 32573), (62, 32693), (69, 32927), (81, 33131), (82, 33134), (84, 33191), (85, 33194), (87, 33206), (88, 33230), (89, 33248), (90, 33251), (91, 33263), (96, 33296), (98, 33338), (107, 33464), (108, 33467), (109, 33632), (110, 33686), (114, 33749), (115, 33758), (119, 33932), (121, 34037), (125, 34148), (128, 34169), (134, 34292), (135, 34298), (138, 34340), (139, 34358), (147, 34502), (149, 34544), (153, 34649),

Gene: Skog_149 Start: 63157, Stop: 66045, Start Num: 22

Candidate Starts for Skog_149:

(Start: 22 @63157 has 4 MA's), (27, 63250), (28, 63259), (41, 63391), (42, 63400), (47, 63478), (48, 63637), (49, 63643), (50, 63685), (54, 63820), (69, 64282), (70, 64285), (71, 64318), (83, 64552), (86, 64579), (87, 64588), (102, 64735), (118, 65134), (122, 65329), (123, 65335), (126, 65374), (127, 65377), (130, 65440), (142, 65617), (151, 65809), (152, 65848), (154, 65869),

Gene: SmallFry_88 Start: 31105, Stop: 34815, Start Num: 1

Candidate Starts for SmallFry_88:

(Start: 1 @31105 has 173 MA's), (3, 31186), (5, 31207), (6, 31231), (8, 31276), (9, 31303), (10, 31306), (11, 31318), (12, 31336), (13, 31339), (18, 31558), (20, 31696), (23, 31783), (25, 31831), (31, 31894), (33, 31924), (35, 31951), (37, 31960), (40, 31981), (45, 32035), (46, 32101), (58, 32494), (59, 32527), (62, 32647), (69, 32878), (81, 33082), (82, 33085), (84, 33142), (85, 33145), (87, 33157), (88, 33181), (89, 33199), (90, 33202), (91, 33214), (96, 33247), (98, 33289), (107, 33415), (108, 33418), (109, 33583), (114, 33700), (115, 33709), (119, 33883), (121, 33988), (125, 34099), (128, 34120), (134, 34243), (135, 34249), (138, 34291), (139, 34309), (147, 34453), (149, 34495), (153, 34600),

Gene: Spec_83 Start: 30871, Stop: 34581, Start Num: 1

Candidate Starts for Spec_83:

(Start: 1 @30871 has 173 MA's), (3, 30952), (5, 30973), (6, 30997), (8, 31042), (9, 31069), (10, 31072), (11, 31084), (12, 31102), (13, 31105), (18, 31324), (20, 31462), (23, 31549), (25, 31597), (31, 31660), (33, 31690), (35, 31717), (37, 31726), (40, 31747), (45, 31801), (46, 31867), (58, 32260), (59, 32293), (62, 32413), (69, 32644), (81, 32848), (82, 32851), (84, 32908), (85, 32911), (87, 32923), (88, 32947), (89, 32965), (90, 32968), (91, 32980), (96, 33013), (98, 33055), (107, 33181), (108, 33184), (109, 33349), (114, 33466), (115, 33475), (119, 33649), (121, 33754), (125, 33865), (128, 33886), (134, 34009), (135, 34015), (138, 34057), (139, 34075), (147, 34219), (149, 34261), (153, 34366),

Gene: Specks_94 Start: 33940, Stop: 37599, Start Num: 1

Candidate Starts for Specks_94:

(Start: 1 @33940 has 173 MA's), (3, 34021), (5, 34042), (6, 34066), (8, 34111), (9, 34138), (10, 34141), (11, 34153), (12, 34171), (13, 34174), (18, 34393), (20, 34531), (23, 34618), (25, 34666), (31, 34729), (33, 34759), (35, 34786), (37, 34795), (39, 34813), (40, 34816), (45, 34870), (46, 34936), (58, 35329), (59, 35362), (62, 35482), (64, 35596), (69, 35680), (81, 35884), (82, 35887), (84, 35944), (85, 35947), (87, 35959), (88, 35983), (89, 36001), (90, 36004), (91, 36016), (96, 36049), (98, 36091), (107, 36217), (108, 36220), (109, 36367), (110, 36421), (114, 36484), (115, 36493), (119, 36667), (121, 36772), (125, 36883), (128, 36904), (134, 37027), (135, 37033), (138, 37075), (139, 37093), (147, 37237), (149, 37279), (153, 37384),

Gene: Sprinklers_83 Start: 30368, Stop: 34081, Start Num: 1

Candidate Starts for Sprinklers_83:

(Start: 1 @30368 has 173 MA's), (3, 30449), (5, 30470), (6, 30494), (8, 30539), (9, 30566), (10, 30569), (11, 30581), (12, 30599), (13, 30602), (18, 30821), (20, 30959), (23, 31046), (25, 31094), (31, 31157), (33, 31187), (35, 31214), (37, 31223), (40, 31244), (45, 31298), (46, 31364), (58, 31757), (59, 31790), (62, 31910), (69, 32144), (81, 32348), (82, 32351), (84, 32408), (85, 32411), (87, 32423), (88, 32447), (89, 32465), (90, 32468), (91, 32480), (96, 32513), (98, 32555), (107, 32681), (108, 32684), (109, 32849), (114, 32966), (115, 32975), (119, 33149), (121, 33254), (125, 33365), (128, 33386), (134, 33509), (135, 33515), (138, 33557), (139, 33575), (147, 33719), (149, 33761), (153, 33866),

Gene: Spud_88 Start: 32461, Stop: 35823, Start Num: 1

Candidate Starts for Spud_88:

(Start: 1 @32461 has 173 MA's), (3, 32542), (5, 32563), (6, 32587), (8, 32632), (9, 32659), (10, 32662), (11, 32674), (12, 32692), (13, 32695), (18, 32914), (20, 33052), (23, 33139), (25, 33187), (31, 33250), (33, 33280), (35, 33307), (37, 33316), (40, 33337), (45, 33391), (46, 33457), (57, 33835), (58, 33871), (64, 34147), (69, 34258), (81, 34462), (82, 34465), (84, 34522), (85, 34525), (87, 34537), (88, 34561), (89, 34579), (90, 34582), (91, 34594), (96, 34627), (98, 34669), (109, 34810), (110, 34864), (114, 34927), (115, 34936), (119, 35110), (121, 35215), (125, 35326), (128, 35347), (147, 35482), (149, 35524), (153, 35608),

Gene: SrishMeg2525_87 Start: 31857, Stop: 35195, Start Num: 1

Candidate Starts for SrishMeg2525_87:

(Start: 1 @31857 has 173 MA's), (3, 31938), (5, 31959), (6, 31983), (8, 32028), (9, 32055), (10, 32058), (11, 32070), (12, 32088), (13, 32091), (18, 32310), (20, 32448), (23, 32535), (25, 32583), (31, 32646), (33, 32676), (35, 32703), (37, 32712), (39, 32730), (40, 32733), (45, 32787), (46, 32853), (58, 33246), (59, 33279), (62, 33399), (69, 33630), (81, 33834), (82, 33837), (84, 33894), (85, 33897), (87, 33909), (88, 33933), (89, 33951), (90, 33954), (91, 33966), (96, 33999), (98, 34041), (109, 34182), (110, 34236), (114, 34299), (115, 34308), (119, 34482), (121, 34587), (125, 34698), (128, 34719), (147, 34854), (149, 34896), (153, 34980),

Gene: StephanieG_87 Start: 32958, Stop: 36671, Start Num: 1

Candidate Starts for StephanieG_87:

(Start: 1 @32958 has 173 MA's), (3, 33039), (5, 33060), (6, 33084), (9, 33156), (10, 33159), (11, 33171), (12, 33189), (13, 33192), (18, 33411), (20, 33549), (23, 33636), (25, 33684), (31, 33747), (33,

33777), (35, 33804), (37, 33813), (40, 33834), (45, 33888), (46, 33954), (58, 34347), (59, 34380), (62, 34500), (69, 34734), (81, 34938), (82, 34941), (84, 34998), (85, 35001), (87, 35013), (88, 35037), (89, 35055), (90, 35058), (91, 35070), (96, 35103), (98, 35145), (107, 35271), (108, 35274), (109, 35439), (110, 35493), (114, 35556), (115, 35565), (119, 35739), (121, 35844), (125, 35955), (128, 35976), (134, 36099), (135, 36105), (138, 36147), (139, 36165), (147, 36309), (149, 36351), (153, 36456),

Gene: Stubby_81 Start: 30428, Stop: 33913, Start Num: 1

Candidate Starts for Stubby_81:

(Start: 1 @30428 has 173 MA's), (3, 30509), (5, 30530), (6, 30554), (8, 30599), (9, 30626), (10, 30629), (11, 30641), (12, 30659), (13, 30662), (18, 30881), (20, 31019), (23, 31106), (25, 31154), (31, 31217), (33, 31247), (35, 31274), (37, 31283), (40, 31304), (45, 31358), (46, 31424), (57, 31772), (58, 31808), (64, 32084), (69, 32195), (81, 32399), (82, 32402), (84, 32459), (85, 32462), (87, 32474), (88, 32498), (89, 32516), (90, 32519), (91, 32531), (96, 32564), (98, 32606), (107, 32732), (108, 32735), (109, 32900), (114, 33017), (115, 33026), (119, 33200), (121, 33305), (125, 33416), (128, 33437), (147, 33572), (149, 33614), (153, 33698),

Gene: StubbySaigey_90 Start: 30786, Stop: 34148, Start Num: 1

Candidate Starts for StubbySaigey_90:

(Start: 1 @30786 has 173 MA's), (3, 30867), (5, 30888), (6, 30912), (8, 30957), (9, 30984), (10, 30987), (11, 30999), (12, 31017), (13, 31020), (18, 31239), (20, 31377), (23, 31464), (25, 31512), (31, 31575), (33, 31605), (35, 31632), (37, 31641), (39, 31659), (40, 31662), (45, 31716), (46, 31782), (57, 32160), (58, 32196), (64, 32472), (69, 32583), (81, 32787), (82, 32790), (84, 32847), (85, 32850), (87, 32862), (88, 32886), (89, 32904), (90, 32907), (91, 32919), (96, 32952), (98, 32994), (109, 33135), (110, 33189), (114, 33252), (115, 33261), (119, 33435), (121, 33540), (125, 33651), (128, 33672), (147, 33807), (149, 33849), (153, 33933),

Gene: Tainan_93 Start: 33590, Stop: 37249, Start Num: 1

Candidate Starts for Tainan_93:

(Start: 1 @33590 has 173 MA's), (3, 33671), (5, 33692), (6, 33716), (9, 33788), (10, 33791), (11, 33803), (12, 33821), (13, 33824), (18, 34043), (20, 34181), (23, 34268), (25, 34316), (31, 34379), (35, 34436), (37, 34445), (40, 34466), (45, 34520), (46, 34586), (58, 34979), (59, 35012), (62, 35132), (64, 35246), (69, 35330), (81, 35534), (82, 35537), (84, 35594), (85, 35597), (87, 35609), (88, 35633), (89, 35651), (90, 35654), (91, 35666), (96, 35699), (98, 35741), (107, 35867), (108, 35870), (109, 36017), (110, 36071), (114, 36134), (115, 36143), (119, 36317), (121, 36422), (125, 36533), (128, 36554), (134, 36677), (135, 36683), (138, 36725), (139, 36743), (147, 36887), (149, 36929), (153, 37034),

Gene: Teardrop_88 Start: 31264, Stop: 34923, Start Num: 1

Candidate Starts for Teardrop_88:

(Start: 1 @31264 has 173 MA's), (3, 31345), (5, 31366), (6, 31390), (8, 31435), (9, 31462), (10, 31465), (11, 31477), (12, 31495), (13, 31498), (18, 31717), (20, 31855), (23, 31942), (25, 31990), (31, 32053), (33, 32083), (35, 32110), (37, 32119), (39, 32137), (40, 32140), (45, 32194), (46, 32260), (58, 32653), (59, 32686), (62, 32806), (64, 32920), (69, 33004), (81, 33208), (82, 33211), (84, 33268), (85, 33271), (87, 33283), (88, 33307), (89, 33325), (90, 33328), (91, 33340), (96, 33373), (98, 33415), (107, 33541), (108, 33544), (109, 33691), (110, 33745), (114, 33808), (115, 33817), (119, 33991), (121, 34096), (125, 34207), (128, 34228), (134, 34351), (135, 34357), (138, 34399), (139, 34417), (147, 34561), (149, 34603), (153, 34708),

Gene: TinyTim_88 Start: 32146, Stop: 35859, Start Num: 1

Candidate Starts for TinyTim_88:

(Start: 1 @32146 has 173 MA's), (3, 32227), (5, 32248), (6, 32272), (8, 32317), (9, 32344), (10, 32347), (11, 32359), (12, 32377), (13, 32380), (18, 32599), (20, 32737), (23, 32824), (25, 32872), (31, 32935), (33, 32965), (35, 32992), (37, 33001), (39, 33019), (40, 33022), (45, 33076), (46, 33142), (58, 33535), (59, 33568), (62, 33688), (69, 33922), (81, 34126), (82, 34129), (84, 34186), (85, 34189), (87, 34201),

(88, 34225), (89, 34243), (90, 34246), (91, 34258), (96, 34291), (98, 34333), (107, 34459), (108, 34462), (109, 34627), (110, 34681), (114, 34744), (115, 34753), (119, 34927), (121, 35032), (125, 35143), (128, 35164), (134, 35287), (135, 35293), (138, 35335), (139, 35353), (147, 35497), (149, 35539), (153, 35644),

Gene: Tonenili_102 Start: 36564, Stop: 39851, Start Num: 1

Candidate Starts for Tonenili_102:

(Start: 1 @36564 has 173 MA's), (3, 36645), (5, 36666), (6, 36690), (8, 36735), (9, 36762), (10, 36765), (11, 36777), (12, 36795), (13, 36798), (18, 37014), (38, 37140), (45, 37203), (58, 37701), (59, 37734), (62, 37854), (67, 38067), (69, 38085), (81, 38289), (82, 38292), (84, 38349), (85, 38352), (87, 38364), (88, 38388), (89, 38406), (90, 38409), (91, 38421), (93, 38433), (96, 38454), (98, 38496), (109, 38637), (110, 38691), (114, 38751), (115, 38760), (119, 38934), (120, 38973), (121, 39039), (126, 39153), (128, 39171), (137, 39324), (141, 39363), (147, 39489), (149, 39531), (153, 39636),

Gene: Tortoise16_86 Start: 32007, Stop: 35717, Start Num: 1

Candidate Starts for Tortoise16_86:

(Start: 1 @32007 has 173 MA's), (3, 32088), (5, 32109), (6, 32133), (8, 32178), (9, 32205), (10, 32208), (11, 32220), (12, 32238), (13, 32241), (18, 32460), (20, 32598), (23, 32685), (25, 32733), (31, 32796), (33, 32826), (35, 32853), (37, 32862), (40, 32883), (45, 32937), (46, 33003), (58, 33396), (59, 33429), (62, 33549), (69, 33780), (81, 33984), (82, 33987), (84, 34044), (85, 34047), (87, 34059), (88, 34083), (89, 34101), (90, 34104), (91, 34116), (96, 34149), (98, 34191), (107, 34317), (108, 34320), (109, 34485), (114, 34602), (115, 34611), (119, 34785), (121, 34890), (125, 35001), (128, 35022), (134, 35145), (135, 35151), (138, 35193), (139, 35211), (147, 35355), (149, 35397), (153, 35502),

Gene: Trinitium_84 Start: 30571, Stop: 33912, Start Num: 1

Candidate Starts for Trinitium_84:

(Start: 1 @30571 has 173 MA's), (3, 30652), (5, 30673), (6, 30697), (8, 30742), (9, 30769), (10, 30772), (11, 30784), (12, 30802), (13, 30805), (18, 31024), (20, 31162), (23, 31249), (25, 31297), (31, 31360), (33, 31390), (35, 31417), (37, 31426), (40, 31447), (45, 31501), (46, 31567), (58, 31960), (59, 31993), (64, 32239), (69, 32350), (81, 32554), (82, 32557), (84, 32614), (85, 32617), (87, 32629), (88, 32653), (89, 32671), (90, 32674), (91, 32686), (96, 32719), (98, 32761), (109, 32902), (110, 32956), (114, 33016), (115, 33025), (119, 33199), (121, 33304), (125, 33415), (128, 33436), (147, 33571), (149, 33613), (153, 33697),

Gene: Turret_83 Start: 30237, Stop: 33578, Start Num: 1

Candidate Starts for Turret_83:

(Start: 1 @30237 has 173 MA's), (3, 30318), (5, 30339), (6, 30363), (8, 30408), (9, 30435), (10, 30438), (11, 30450), (12, 30468), (13, 30471), (18, 30690), (20, 30828), (23, 30915), (25, 30963), (31, 31026), (33, 31056), (35, 31083), (37, 31092), (40, 31113), (45, 31167), (46, 31233), (58, 31626), (59, 31659), (64, 31905), (69, 32016), (81, 32220), (82, 32223), (84, 32280), (85, 32283), (87, 32295), (88, 32319), (89, 32337), (90, 32340), (91, 32352), (96, 32385), (98, 32427), (109, 32568), (110, 32622), (114, 32682), (115, 32691), (119, 32865), (121, 32970), (125, 33081), (128, 33102), (147, 33237), (149, 33279), (153, 33363),

Gene: Tyke_90 Start: 32911, Stop: 36621, Start Num: 1

Candidate Starts for Tyke_90:

(Start: 1 @32911 has 173 MA's), (3, 32992), (5, 33013), (6, 33037), (8, 33082), (9, 33109), (10, 33112), (11, 33124), (12, 33142), (13, 33145), (18, 33364), (20, 33502), (23, 33589), (25, 33637), (31, 33700), (33, 33730), (35, 33757), (37, 33766), (40, 33787), (45, 33841), (46, 33907), (58, 34300), (59, 34333), (62, 34453), (69, 34684), (81, 34888), (82, 34891), (84, 34948), (85, 34951), (87, 34963), (88, 34987), (89, 35005), (90, 35008), (91, 35020), (96, 35053), (98, 35095), (107, 35221), (108, 35224), (109, 35389), (114, 35506), (115, 35515), (119, 35689), (121, 35794), (125, 35905), (128, 35926), (134, 36049), (135, 36055), (138, 36097), (139, 36115), (147, 36259), (149, 36301), (153, 36406),

Gene: ValleyTerrace_88 Start: 31151, Stop: 34864, Start Num: 1

Candidate Starts for ValleyTerrace_88:

(Start: 1 @31151 has 173 MA's), (3, 31232), (5, 31253), (6, 31277), (8, 31322), (9, 31349), (10, 31352), (11, 31364), (12, 31382), (13, 31385), (18, 31604), (20, 31742), (23, 31829), (25, 31877), (31, 31940), (33, 31970), (35, 31997), (37, 32006), (39, 32024), (40, 32027), (45, 32081), (46, 32147), (58, 32540), (59, 32573), (62, 32693), (69, 32927), (81, 33131), (82, 33134), (84, 33191), (85, 33194), (87, 33206), (88, 33230), (89, 33248), (90, 33251), (91, 33263), (96, 33296), (98, 33338), (107, 33464), (108, 33467), (109, 33632), (110, 33686), (114, 33749), (115, 33758), (119, 33932), (121, 34037), (125, 34148), (128, 34169), (134, 34292), (135, 34298), (138, 34340), (139, 34358), (147, 34502), (149, 34544), (153, 34649),

Gene: Wally_87 Start: 30701, Stop: 34414, Start Num: 1

Candidate Starts for Wally_87:

(Start: 1 @30701 has 173 MA's), (3, 30782), (5, 30803), (6, 30827), (8, 30872), (9, 30899), (10, 30902), (11, 30914), (12, 30932), (13, 30935), (18, 31154), (20, 31292), (23, 31379), (25, 31427), (31, 31490), (33, 31520), (35, 31547), (37, 31556), (39, 31574), (40, 31577), (45, 31631), (46, 31697), (58, 32090), (59, 32123), (62, 32243), (69, 32477), (81, 32681), (82, 32684), (84, 32741), (85, 32744), (87, 32756), (88, 32780), (89, 32798), (90, 32801), (91, 32813), (96, 32846), (98, 32888), (107, 33014), (108, 33017), (109, 33182), (110, 33236), (114, 33299), (115, 33308), (119, 33482), (121, 33587), (125, 33698), (128, 33719), (134, 33842), (135, 33848), (138, 33890), (139, 33908), (147, 34052), (149, 34094), (153, 34199),

Gene: Willis_89 Start: 32041, Stop: 35754, Start Num: 1

Candidate Starts for Willis_89:

(Start: 1 @32041 has 173 MA's), (3, 32122), (5, 32143), (6, 32167), (8, 32212), (9, 32239), (10, 32242), (11, 32254), (12, 32272), (13, 32275), (18, 32494), (20, 32632), (23, 32719), (25, 32767), (31, 32830), (33, 32860), (35, 32887), (37, 32896), (39, 32914), (40, 32917), (45, 32971), (46, 33037), (58, 33430), (59, 33463), (62, 33583), (69, 33817), (81, 34021), (82, 34024), (84, 34081), (85, 34084), (87, 34096), (88, 34120), (89, 34138), (90, 34141), (91, 34153), (96, 34186), (98, 34228), (107, 34354), (108, 34357), (109, 34522), (110, 34576), (114, 34639), (115, 34648), (119, 34822), (121, 34927), (125, 35038), (128, 35059), (134, 35182), (135, 35188), (138, 35230), (139, 35248), (147, 35392), (149, 35434), (153, 35539),

Gene: Yassified_84 Start: 30651, Stop: 34145, Start Num: 1

Candidate Starts for Yassified_84:

(Start: 1 @30651 has 173 MA's), (3, 30732), (5, 30753), (6, 30777), (8, 30822), (9, 30849), (10, 30852), (11, 30864), (12, 30882), (13, 30885), (18, 31104), (20, 31242), (23, 31329), (25, 31377), (31, 31440), (33, 31470), (35, 31497), (37, 31506), (40, 31527), (45, 31581), (46, 31647), (58, 32040), (59, 32073), (62, 32193), (69, 32427), (81, 32631), (82, 32634), (84, 32691), (85, 32694), (87, 32706), (88, 32730), (89, 32748), (90, 32751), (91, 32763), (96, 32796), (98, 32838), (107, 32964), (108, 32967), (109, 33132), (110, 33186), (114, 33249), (115, 33258), (119, 33432), (121, 33537), (125, 33648), (128, 33669), (147, 33804), (149, 33846), (153, 33930),

Gene: YemiJoy2021_89 Start: 32143, Stop: 35856, Start Num: 1

Candidate Starts for YemiJoy2021_89:

(Start: 1 @32143 has 173 MA's), (3, 32224), (5, 32245), (6, 32269), (8, 32314), (9, 32341), (10, 32344), (11, 32356), (12, 32374), (13, 32377), (18, 32596), (20, 32734), (23, 32821), (25, 32869), (31, 32932), (33, 32962), (35, 32989), (37, 32998), (39, 33016), (40, 33019), (45, 33073), (46, 33139), (58, 33532), (59, 33565), (62, 33685), (69, 33919), (81, 34123), (82, 34126), (84, 34183), (85, 34186), (87, 34198), (88, 34222), (89, 34240), (90, 34243), (91, 34255), (96, 34288), (98, 34330), (107, 34456), (108, 34459), (109, 34624), (110, 34678), (114, 34741), (115, 34750), (119, 34924), (121, 35029), (125, 35140), (128, 35161), (134, 35284), (135, 35290), (138, 35332), (139, 35350), (147, 35494), (149,

35536), (153, 35641),

Gene: YoungMoneyMata_88 Start: 30902, Stop: 34615, Start Num: 1

Candidate Starts for YoungMoneyMata_88:

(Start: 1 @30902 has 173 MA's), (3, 30983), (5, 31004), (6, 31028), (8, 31073), (9, 31100), (10, 31103), (11, 31115), (12, 31133), (13, 31136), (18, 31355), (20, 31493), (23, 31580), (25, 31628), (31, 31691), (33, 31721), (35, 31748), (37, 31757), (39, 31775), (40, 31778), (45, 31832), (46, 31898), (58, 32291), (59, 32324), (62, 32444), (69, 32678), (81, 32882), (82, 32885), (84, 32942), (85, 32945), (87, 32957), (88, 32981), (89, 32999), (90, 33002), (91, 33014), (96, 33047), (98, 33089), (107, 33215), (108, 33218), (109, 33383), (110, 33437), (114, 33500), (115, 33509), (119, 33683), (121, 33788), (125, 33899), (128, 33920), (134, 34043), (135, 34049), (138, 34091), (139, 34109), (147, 34253), (149, 34295), (153, 34400),

Gene: Yucca_88 Start: 32068, Stop: 35778, Start Num: 1

Candidate Starts for Yucca_88:

(Start: 1 @32068 has 173 MA's), (3, 32149), (5, 32170), (6, 32194), (8, 32239), (9, 32266), (10, 32269), (11, 32281), (12, 32299), (13, 32302), (18, 32521), (20, 32659), (23, 32746), (25, 32794), (31, 32857), (33, 32887), (35, 32914), (37, 32923), (40, 32944), (45, 32998), (46, 33064), (58, 33457), (59, 33490), (62, 33610), (69, 33841), (81, 34045), (82, 34048), (84, 34105), (85, 34108), (87, 34120), (88, 34144), (89, 34162), (90, 34165), (91, 34177), (96, 34210), (98, 34252), (107, 34378), (108, 34381), (109, 34546), (110, 34600), (114, 34663), (115, 34672), (119, 34846), (121, 34951), (125, 35062), (128, 35083), (134, 35206), (135, 35212), (138, 35254), (139, 35272), (147, 35416), (149, 35458), (153, 35563),

Gene: Zalkecks_89 Start: 31831, Stop: 35544, Start Num: 1

Candidate Starts for Zalkecks_89:

(Start: 1 @31831 has 173 MA's), (3, 31912), (5, 31933), (6, 31957), (8, 32002), (9, 32029), (10, 32032), (11, 32044), (12, 32062), (13, 32065), (18, 32284), (20, 32422), (23, 32509), (25, 32557), (31, 32620), (33, 32650), (35, 32677), (37, 32686), (39, 32704), (40, 32707), (45, 32761), (46, 32827), (58, 33220), (59, 33253), (62, 33373), (69, 33607), (81, 33811), (82, 33814), (84, 33871), (85, 33874), (87, 33886), (88, 33910), (89, 33928), (90, 33931), (91, 33943), (96, 33976), (98, 34018), (107, 34144), (108, 34147), (109, 34312), (110, 34366), (114, 34429), (115, 34438), (119, 34612), (121, 34717), (125, 34828), (128, 34849), (134, 34972), (135, 34978), (138, 35020), (139, 35038), (147, 35182), (149, 35224), (153, 35329),

Gene: Zeenon_90 Start: 32133, Stop: 35471, Start Num: 1

Candidate Starts for Zeenon_90:

(Start: 1 @32133 has 173 MA's), (3, 32214), (5, 32235), (6, 32259), (8, 32304), (9, 32331), (10, 32334), (11, 32346), (12, 32364), (13, 32367), (18, 32586), (20, 32724), (23, 32811), (25, 32859), (31, 32922), (33, 32952), (35, 32979), (37, 32988), (39, 33006), (40, 33009), (45, 33063), (46, 33129), (58, 33522), (59, 33555), (62, 33675), (69, 33906), (81, 34110), (82, 34113), (84, 34170), (85, 34173), (87, 34185), (88, 34209), (89, 34227), (90, 34230), (91, 34242), (96, 34275), (98, 34317), (109, 34458), (110, 34512), (114, 34575), (115, 34584), (119, 34758), (121, 34863), (125, 34974), (128, 34995), (147, 35130), (149, 35172), (153, 35256),

Gene: ZygoTaiga_87 Start: 32147, Stop: 35860, Start Num: 1

Candidate Starts for ZygoTaiga_87:

(Start: 1 @32147 has 173 MA's), (3, 32228), (5, 32249), (6, 32273), (8, 32318), (9, 32345), (10, 32348), (11, 32360), (12, 32378), (13, 32381), (18, 32600), (20, 32738), (23, 32825), (25, 32873), (31, 32936), (33, 32966), (35, 32993), (37, 33002), (39, 33020), (40, 33023), (45, 33077), (46, 33143), (58, 33536), (59, 33569), (62, 33689), (69, 33923), (81, 34127), (82, 34130), (84, 34187), (85, 34190), (87, 34202), (88, 34226), (89, 34244), (90, 34247), (91, 34259), (96, 34292), (98, 34334), (107, 34460), (108, 34463), (109, 34628), (110, 34682), (114, 34745), (115, 34754), (119, 34928), (121, 35033), (125,

35144), (128, 35165), (134, 35288), (135, 35294), (138, 35336), (139, 35354), (147, 35498), (149, 35540), (153, 35645),