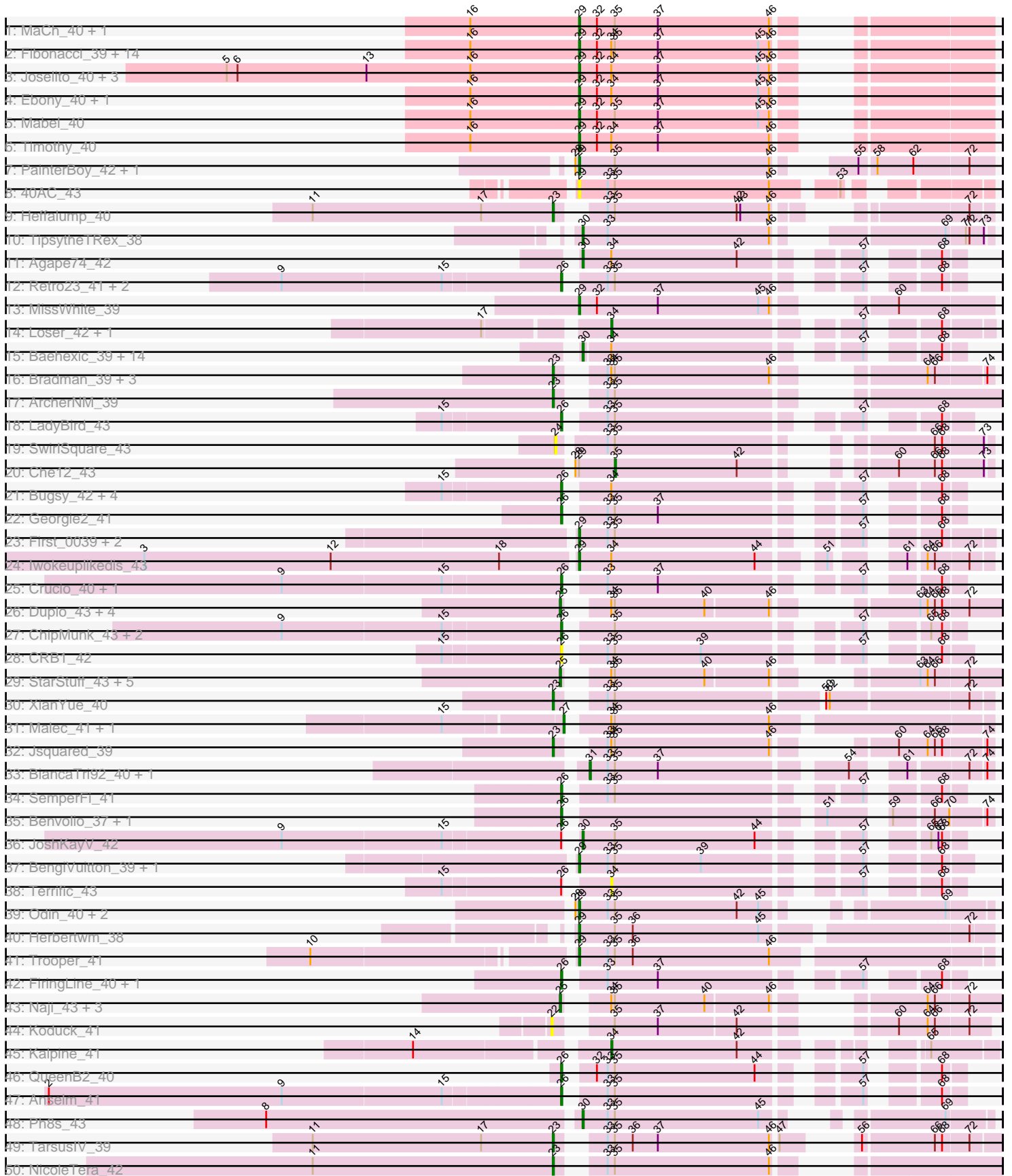
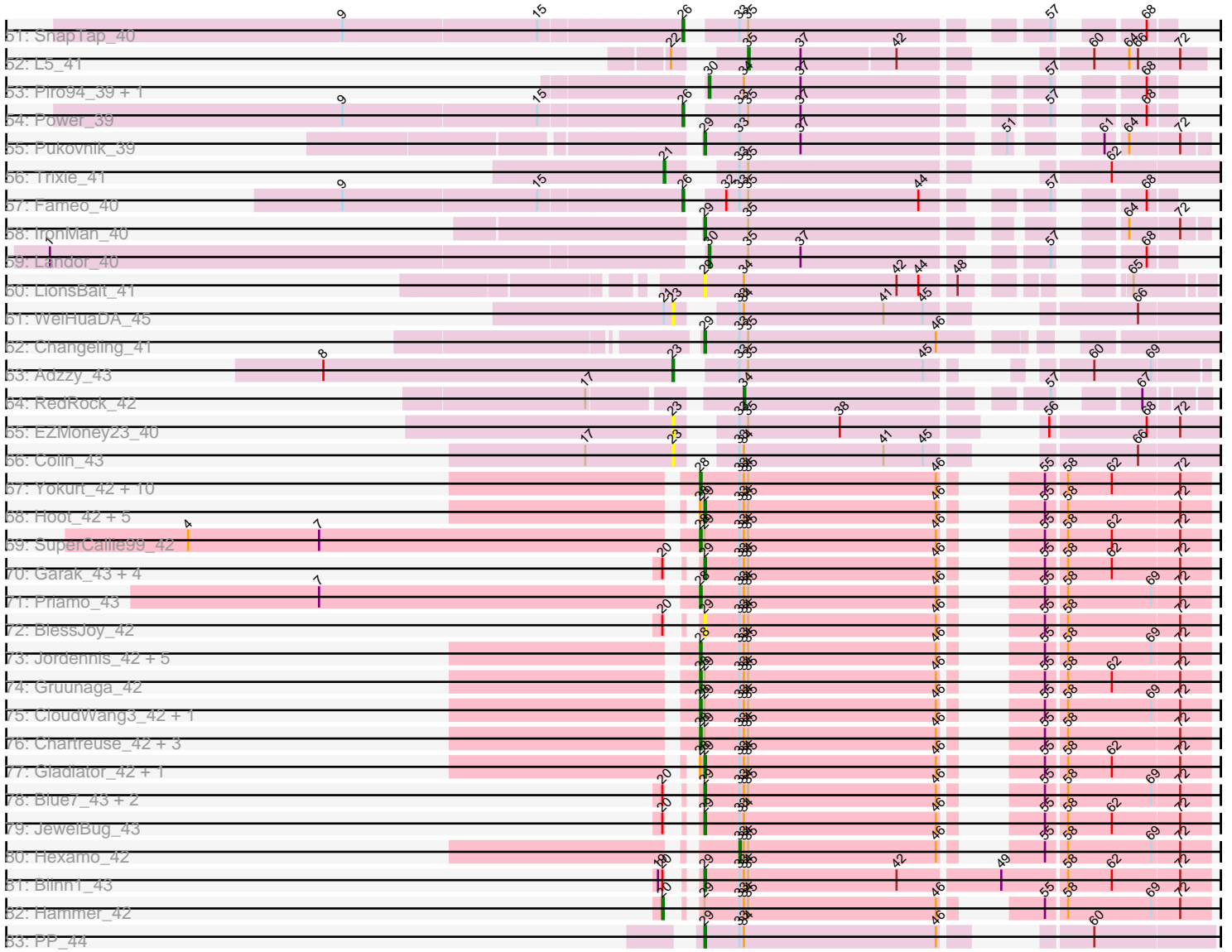


Pham 217648



Pham 217648



Note: Tracks are now grouped by subcluster and scaled. Switching in subcluster is indicated by changes in track color. Track scale is now set by default to display the region 30 bp upstream of start 1 to 30 bp downstream of the last possible start. If this default region is judged to be packed too tightly with annotated starts, the track will be further scaled to only show that region of the ORF with annotated starts. This action will be indicated by adding "Zoomed" to the title. For starts, yellow indicates the location of called starts comprised solely of Glimmer/GeneMark auto-annotations, green indicates the location of called starts with at least 1 manual gene annotation.

Pham 217648 Report

This analysis was run 03/28/25 on database version 593.

Pham number 217648 has 183 members, 26 are drafts.

Phages represented in each track:

- Track 1 : MaCh_40, Bachome_41
- Track 2 : Fibonacci_39, TinyTimmy_40, Bud_39, Salz_39, Insomnia_40, Hutc2_39, Snape_39, Lucivia_40, Petersenfast_38, Jabith_40, Sham4_39, Orange_39, Bowtie_40, Mulciber_39, Gilberta_40
- Track 3 : Joselito_40, Munch_40, Aneem_40, Flaverint_40
- Track 4 : Ebony_40, Et2Brutus_39
- Track 5 : Mabel_40
- Track 6 : Timothy_40
- Track 7 : PainterBoy_42, Lucyedi_42
- Track 8 : 40AC_43
- Track 9 : Heffalump_40
- Track 10 : TipsytheTRex_38
- Track 11 : Agape74_42
- Track 12 : Retro23_41, DudeLittle_39, Dalmatian_41
- Track 13 : MissWhite_39
- Track 14 : Loser_42, AnnaL29_42
- Track 15 : Baehexic_39, Equemioh13_41, Updawg_41, Smeagan_43, MiculUcigas_40, WideWale_41, HarryHoudini_41, AbbyPaige_42, Dignity_42, Gratitude_40, Leviathan_42, Turbido_41, Whabigail7_41, LilTurb_41, Jerm_42
- Track 16 : Bradman_39, MajorMajor_39, Serenity_40, Quokka_38
- Track 17 : ArcherNM_39
- Track 18 : LadyBird_43
- Track 19 : SwirlSquare_43
- Track 20 : Che12_43
- Track 21 : Buggy_42, Centaur_41, NaSiaTalie_40, Sknot_42, Flare16_40
- Track 22 : Georgie2_41
- Track 23 : First_0039, AN3_40, 20ES_40
- Track 24 : Iwokeuplikedis_43
- Track 25 : Crucio_40, SweetiePie_40
- Track 26 : Duplo_43, Tomathan_43, DBQu4n_43, Kerberos_43, Pomar16_43
- Track 27 : ChipMunk_43, KingCyrus_43, EvilGenius_43
- Track 28 : CRB1_42
- Track 29 : StarStuff_43, ANI8_43, C3_38, VC3_43, VA6_40, AN9_43
- Track 30 : XianYue_40
- Track 31 : Malec_41, Larenn_40
- Track 32 : Jsquared_39
- Track 33 : BiancaTri92_40, Leogania_40

- Track 34 : SemperFi_41
- Track 35 : Benvolio_37, Echild_40
- Track 36 : JoshKayV_42
- Track 37 : BengiVuitton_39, Deloris_38
- Track 38 : Terrific_43
- Track 39 : Odin_40, Caraxes_41, Superchunk_40
- Track 40 : Herbertwm_38
- Track 41 : Trooper_41
- Track 42 : FiringLine_40, QueenBeesly_40
- Track 43 : Naji_43, D29_41, D32_43, Travvers_43
- Track 44 : Koduck_41
- Track 45 : Kalpine_41
- Track 46 : QueenB2_40
- Track 47 : Anselm_41
- Track 48 : Ph8s_43
- Track 49 : TarsusIV_39
- Track 50 : NicoleTera_42
- Track 51 : SnapTap_40
- Track 52 : L5_41
- Track 53 : Piro94_39, Drake55_42
- Track 54 : Power_39
- Track 55 : Pukovnik_39
- Track 56 : Trixie_41
- Track 57 : Fameo_40
- Track 58 : IronMan_40
- Track 59 : Landor_40
- Track 60 : LionsBait_41
- Track 61 : WeiHuaDA_45
- Track 62 : Changeling_41
- Track 63 : Adzzy_43
- Track 64 : RedRock_42
- Track 65 : EZMoney23_40
- Track 66 : Colin_43
- Track 67 : Yokurt_42, WunderPhul_42, Kipper29_42, Pmask_42, Cookiedough_42, SuperAwesome_42, Zaka_42, Zulu_43, Newrala_42, Neeharika16_42, ToneTone_39
- Track 68 : Hoot_42, GreedyLawyer_42, McFly_42, EricB_42, DaVinci_42, VohminGhazi_42
- Track 69 : SuperCallie99_42
- Track 70 : Garak_43, Temprado_43, Helmet_43, Indra_44, Polyphemos_42
- Track 71 : Priamo_43
- Track 72 : BlessJoy_42
- Track 73 : Jordennis_42, Tucker_43, Dorothea_42, Wiks_41, Jeffabunny_42, Lilbunny_41
- Track 74 : Gruunaga_42
- Track 75 : CloudWang3_42, Artemis2UCLA_42
- Track 76 : Chartreuse_42, Candra_42, Kazan_43, SmellyB_42
- Track 77 : Gladiator_42, Roksolana_43
- Track 78 : Blue7_43, Rifter_42, Koko_42
- Track 79 : JewelBug_43
- Track 80 : Hexamo_42
- Track 81 : Blinn1_43
- Track 82 : Hammer_42
- Track 83 : PP_44

Summary of Final Annotations (See graph section above for start numbers):

The start number called the most often in the published annotations is 29, it was called in 53 of the 157 non-draft genes in the pham.

Genes that call this "Most Annotated" start:

- 20ES_40, 40AC_43, AN3_40, Aneem_40, Bachome_41, BengiVuitton_39, BlessJoy_42, Blinn1_43, Blue7_43, Bowtie_40, Bud_39, Caraxes_41, Changeling_41, DaVinci_42, Deloris_38, Ebony_40, EricB_42, Et2Brutus_39, Fibonacci_39, First_0039, Flaverint_40, Garak_43, Gilberta_40, Gladiator_42, GreedyLawyer_42, Helmet_43, Herbertwm_38, Hoot_42, Hutc2_39, Indra_44, Insomnia_40, IronMan_40, Iwokeuplikedis_43, Jabith_40, JewelBug_43, Joselito_40, Koko_42, LionsBait_41, Lucivia_40, Lucyedi_42, MaCh_40, Mabel_40, McFly_42, MissWhite_39, Mulciber_39, Munch_40, Odin_40, Orange_39, PP_44, PainterBoy_42, Petersenfast_38, Polyphemus_42, Pukovnik_39, Rifter_42, Roksolana_43, Salz_39, Sham4_39, Snape_39, Superchunk_40, Temprado_43, Timothy_40, TinyTimmy_40, Trooper_41, VohminGhazi_42,

Genes that have the "Most Annotated" start but do not call it:

- Artemis2UCLA_42, Candra_42, Chartreuse_42, Che12_43, CloudWang3_42, Gruunaga_42, Hammer_42, Kazan_43, SmellyB_42, SuperCallie99_42,

Genes that do not have the "Most Annotated" start:

- AN9_43, ANI8_43, AbbyPaige_42, Adzzy_43, Agape74_42, AnnaL29_42, Anselm_41, ArcherNM_39, Baehexic_39, Benvolio_37, BiancaTri92_40, Bradman_39, Buggy_42, C3_38, CRB1_42, Centaur_41, ChipMunk_43, Colin_43, Cookiedough_42, Crucio_40, D29_41, D32_43, DBQu4n_43, Dalmatian_41, Dignity_42, Dorothea_42, Drake55_42, DudeLittle_39, Duplo_43, EZMoney23_40, Echild_40, Equemioh13_41, EvilGenius_43, Fameo_40, FiringLine_40, Flare16_40, Georgie2_41, Gratitude_40, HarryHoudini_41, Heffalump_40, Hexamo_42, Jeffabunny_42, Jerm_42, Jordennis_42, JoshKayV_42, Jsquared_39, Kalpine_41, Kerberos_43, KingCyrus_43, Kipper29_42, Koduck_41, L5_41, LadyBird_43, Landor_40, Larenn_40, Leogania_40, Leviathan_42, LilTurb_41, Lilbunny_41, Loser_42, MajorMajor_39, Malec_41, MiculUcigas_40, NaSiaTalie_40, Naji_43, Neeharika16_42, Newrala_42, NicoleTera_42, Ph8s_43, Piro94_39, Pmask_42, Pomar16_43, Power_39, Priamo_43, QueenB2_40, QueenBeesly_40, Quokka_38, RedRock_42, Retro23_41, SemperFi_41, Serenity_40, Sknot_42, Smeagan_43, SnapTap_40, StarStuff_43, SuperAwesome_42, SweetiePie_40, SwirlSquare_43, TarsusIV_39, Terrific_43, TipsytheTRex_38, Tomathan_43, ToneTone_39, Travvers_43, Trixie_41, Tucker_43, Turbido_41, Updawg_41, VA6_40, VC3_43, WeiHuaDA_45, Whabigail7_41, WideWale_41, Wiks_41, WunderPhul_42, XianYue_40, Yokurt_42, Zaka_42, Zulu_43,

Summary by start number:

Start 20:

- Found in 12 of 183 (6.6%) of genes in pham
- Manual Annotations of this start: 1 of 157
- Called 8.3% of time when present

- Phage (with cluster) where this start called: Hammer_42 (A6),

Start 21:

- Found in 2 of 183 (1.1%) of genes in pham
- Manual Annotations of this start: 1 of 157
- Called 50.0% of time when present
- Phage (with cluster) where this start called: Trixie_41 (A2),

Start 22:

- Found in 2 of 183 (1.1%) of genes in pham
- No Manual Annotations of this start.
- Called 50.0% of time when present
- Phage (with cluster) where this start called: Koduck_41 (A2),

Start 23:

- Found in 14 of 183 (7.7%) of genes in pham
- Manual Annotations of this start: 8 of 157
- Called 100.0% of time when present
- Phage (with cluster) where this start called: Adzzy_43 (A2), ArcherNM_39 (A2), Bradman_39 (A2), Colin_43 (A2), EZMoney23_40 (A2), Heffalump_40 (A2), Jsquared_39 (A2), MajorMajor_39 (A2), NicoleTera_42 (A2), Quokka_38 (A2), Serenity_40 (A2), TarsusIV_39 (A2), WeiHuaDA_45 (A2), XianYue_40 (A2),

Start 24:

- Found in 1 of 183 (0.5%) of genes in pham
- No Manual Annotations of this start.
- Called 100.0% of time when present
- Phage (with cluster) where this start called: SwirlSquare_43 (A2),

Start 25:

- Found in 15 of 183 (8.2%) of genes in pham
- Manual Annotations of this start: 14 of 157
- Called 100.0% of time when present
- Phage (with cluster) where this start called: AN9_43 (A2), ANI8_43 (A2), C3_38 (A2), D29_41 (A2), D32_43 (A2), DBQu4n_43 (A2), Duplo_43 (A2), Kerberos_43 (A2), Naji_43 (A2), Pomar16_43 (A2), StarStuff_43 (A2), Tomathan_43 (A2), Travvers_43 (A2), VA6_40 (A2), VC3_43 (A2),

Start 26:

- Found in 28 of 183 (15.3%) of genes in pham
- Manual Annotations of this start: 24 of 157
- Called 92.9% of time when present
- Phage (with cluster) where this start called: Anselm_41 (A2), Benvolio_37 (A2), Buggy_42 (A2), CRB1_42 (A2), Centaur_41 (A2), ChipMunk_43 (A2), Crucio_40 (A2), Dalmatian_41 (A2), DudeLittle_39 (A2), Echild_40 (A2), EvilGenius_43 (A2), Fameo_40 (A2), FiringLine_40 (A2), Flare16_40 (A2), Georgie2_41 (A2), KingCyrus_43 (A2), LadyBird_43 (A2), NaSiaTalie_40 (A2), Power_39 (A2), QueenB2_40 (A2), QueenBeesly_40 (A2), Retro23_41 (A2), SemperFi_41 (A2), Sknot_42 (A2), SnapTap_40 (A2), SweetiePie_40 (A2),

Start 27:

- Found in 2 of 183 (1.1%) of genes in pham
- Manual Annotations of this start: 2 of 157

- Called 100.0% of time when present
- Phage (with cluster) where this start called: Larenn_40 (A2), Malec_41 (A2),

Start 28:

- Found in 40 of 183 (21.9%) of genes in pham
- Manual Annotations of this start: 24 of 157
- Called 65.0% of time when present
- Phage (with cluster) where this start called: Artemis2UCLA_42 (A6), Candra_42 (A6), Chartreuse_42 (A6), CloudWang3_42 (A6), Cookiedough_42 (A6), Dorothea_42 (A6), Gruunaga_42 (A6), Jeffabunny_42 (A6), Jordennis_42 (A6), Kazan_43 (A6), Kipper29_42 (A6), Lilbunny_41 (A6), Neeharika16_42 (A6), Newrala_42 (A6), Pmask_42 (A6), Priamo_43 (A6), SmellyB_42 (A6), SuperAwesome_42 (A6), SuperCallie99_42 (A6), ToneTone_39 (A6), Tucker_43 (A6), Wiks_41 (A6), WunderPhul_42 (A6), Yokurt_42 (A6), Zaka_42 (A6), Zulu_43 (A6),

Start 29:

- Found in 74 of 183 (40.4%) of genes in pham
- Manual Annotations of this start: 53 of 157
- Called 86.5% of time when present
- Phage (with cluster) where this start called: 20ES_40 (A2), 40AC_43 (A17), AN3_40 (A2), Aneem_40 (A11), Bachome_41 (A11), BengiVuitton_39 (A2), BlessJoy_42 (A6), Blinn1_43 (A6), Blue7_43 (A6), Bowtie_40 (A11), Bud_39 (A11), Caraxes_41 (A2), Changeling_41 (A2), DaVinci_42 (A6), Deloris_38 (A2), Ebony_40 (A11), EricB_42 (A6), Et2Brutus_39 (A11), Fibonacci_39 (A11), First_0039 (A2), Flaverint_40 (A11), Garak_43 (A6), Gilberta_40 (A11), Gladiator_42 (A6), GreedyLawyer_42 (A6), Helmet_43 (A6), Herbertwm_38 (A2), Hoot_42 (A6), Hutc2_39 (A11), Indra_44 (A6), Insomnia_40 (A11), IronMan_40 (A2), Iwokeuplikedis_43 (A2), Jabith_40 (A11), JewelBug_43 (A6), Joselito_40 (A11), Koko_42 (A6), LionsBait_41 (A2), Lucivia_40 (A11), Lucyedi_42 (A16), MaCh_40 (A11), Mabel_40 (A11), McFly_42 (A6), MissWhite_39 (A2), Mulciber_39 (A11), Munch_40 (A11), Odin_40 (A2), Orange_39 (A11), PP_44 (A7), PainterBoy_42 (A16), Petersenfast_38 (A11), Polyphemus_42 (A6), Pukovnik_39 (A2), Rifter_42 (A6), Roksolana_43 (A6), Salz_39 (A11), Sham4_39 (A11), Snape_39 (A11), Superchunk_40 (A2), Temprado_43 (A6), Timothy_40 (A11), TinyTimmy_40 (A11), Trooper_41 (A2), VohminGhazi_42 (A6),

Start 30:

- Found in 22 of 183 (12.0%) of genes in pham
- Manual Annotations of this start: 21 of 157
- Called 100.0% of time when present
- Phage (with cluster) where this start called: AbbyPaige_42 (A2), Agape74_42 (A2), Baehexic_39 (A2), Dignity_42 (A2), Drake55_42 (A2), Equemioh13_41 (A2), Gratitude_40 (A2), HarryHoudini_41 (A2), Jerm_42 (A2), JoshKayV_42 (A2), Landor_40 (A2), Leviathan_42 (A2), LilTurb_41 (A2), MiculUcigas_40 (A2), Ph8s_43 (A2), Piro94_39 (A2), Smeagan_43 (A2), TopsytheTRex_38 (A2), Turbido_41 (A2), Updawg_41 (A2), Whabigail7_41 (A2), WideWale_41 (A2),

Start 31:

- Found in 2 of 183 (1.1%) of genes in pham
- Manual Annotations of this start: 2 of 157
- Called 100.0% of time when present
- Phage (with cluster) where this start called: BiancaTri92_40 (A2), Leogania_40 (A2),

Start 33:

- Found in 96 of 183 (52.5%) of genes in pham
- Manual Annotations of this start: 1 of 157
- Called 1.0% of time when present
- Phage (with cluster) where this start called: Hexamo_42 (A6),

Start 34:

- Found in 124 of 183 (67.8%) of genes in pham
- Manual Annotations of this start: 4 of 157
- Called 4.0% of time when present
- Phage (with cluster) where this start called: AnnaL29_42 (A2), Kalpine_41 (A2), Loser_42 (A2), RedRock_42 (A2), Terrific_43 (A2),

Start 35:

- Found in 133 of 183 (72.7%) of genes in pham
- Manual Annotations of this start: 2 of 157
- Called 1.5% of time when present
- Phage (with cluster) where this start called: Che12_43 (A2), L5_41 (A2),

Summary by clusters:

There are 6 clusters represented in this pham: A17, A16, A11, A2, A7, A6,

Info for manual annotations of cluster A11:

- Start number 29 was manually annotated 24 times for cluster A11.

Info for manual annotations of cluster A16:

- Start number 29 was manually annotated 2 times for cluster A16.

Info for manual annotations of cluster A2:

- Start number 21 was manually annotated 1 time for cluster A2.
- Start number 23 was manually annotated 8 times for cluster A2.
- Start number 25 was manually annotated 14 times for cluster A2.
- Start number 26 was manually annotated 24 times for cluster A2.
- Start number 27 was manually annotated 2 times for cluster A2.
- Start number 29 was manually annotated 12 times for cluster A2.
- Start number 30 was manually annotated 21 times for cluster A2.
- Start number 31 was manually annotated 2 times for cluster A2.
- Start number 34 was manually annotated 4 times for cluster A2.
- Start number 35 was manually annotated 2 times for cluster A2.

Info for manual annotations of cluster A6:

- Start number 20 was manually annotated 1 time for cluster A6.
- Start number 28 was manually annotated 24 times for cluster A6.
- Start number 29 was manually annotated 14 times for cluster A6.
- Start number 33 was manually annotated 1 time for cluster A6.

Info for manual annotations of cluster A7:

- Start number 29 was manually annotated 1 time for cluster A7.

Gene Information:

Gene: 20ES_40 Start: 28514, Stop: 28227, Start Num: 29
Candidate Starts for 20ES_40:
(Start: 29 @28514 has 53 MA's), (Start: 33 @28490 has 1 MA's), (Start: 35 @28484 has 2 MA's), (57, 28307), (68, 28265),

Gene: 40AC_43 Start: 30498, Stop: 30202, Start Num: 29
Candidate Starts for 40AC_43:
(Start: 29 @30498 has 53 MA's), (Start: 33 @30474 has 1 MA's), (Start: 35 @30468 has 2 MA's), (46, 30339), (53, 30294),

Gene: AN3_40 Start: 28897, Stop: 28625, Start Num: 29
Candidate Starts for AN3_40:
(Start: 29 @28897 has 53 MA's), (Start: 33 @28873 has 1 MA's), (Start: 35 @28867 has 2 MA's), (57, 28690), (68, 28648),

Gene: AN9_43 Start: 28888, Stop: 28604, Start Num: 25
Candidate Starts for AN9_43:
(Start: 25 @28888 has 14 MA's), (Start: 34 @28867 has 4 MA's), (Start: 35 @28864 has 2 MA's), (40, 28789), (46, 28738), (63, 28669), (64, 28663), (66, 28657), (72, 28630),

Gene: ANI8_43 Start: 28888, Stop: 28604, Start Num: 25
Candidate Starts for ANI8_43:
(Start: 25 @28888 has 14 MA's), (Start: 34 @28867 has 4 MA's), (Start: 35 @28864 has 2 MA's), (40, 28789), (46, 28738), (63, 28669), (64, 28663), (66, 28657), (72, 28630),

Gene: AbbyPaige_42 Start: 29224, Stop: 28961, Start Num: 30
Candidate Starts for AbbyPaige_42:
(Start: 30 @29224 has 21 MA's), (Start: 34 @29200 has 4 MA's), (57, 29020), (68, 28978),

Gene: Adzzy_43 Start: 27804, Stop: 27520, Start Num: 23
Candidate Starts for Adzzy_43:
(8, 28044), (Start: 23 @27804 has 8 MA's), (Start: 33 @27780 has 1 MA's), (Start: 35 @27774 has 2 MA's), (45, 27654), (60, 27594), (69, 27555),

Gene: Agape74_42 Start: 29209, Stop: 28946, Start Num: 30
Candidate Starts for Agape74_42:
(Start: 30 @29209 has 21 MA's), (Start: 34 @29185 has 4 MA's), (42, 29080), (57, 29005), (68, 28963),

Gene: Aneem_40 Start: 28242, Stop: 27955, Start Num: 29
Candidate Starts for Aneem_40:
(5, 28536), (6, 28527), (13, 28419), (16, 28332), (Start: 29 @28242 has 53 MA's), (32, 28227), (Start: 34 @28215 has 4 MA's), (37, 28176), (45, 28092), (46, 28083),

Gene: AnnaL29_42 Start: 29750, Stop: 29484, Start Num: 34
Candidate Starts for AnnaL29_42:
(17, 29837), (Start: 34 @29750 has 4 MA's), (57, 29564), (68, 29522),

Gene: Anselm_41 Start: 29157, Stop: 28891, Start Num: 26
Candidate Starts for Anselm_41:
(2, 29577), (9, 29382), (15, 29250), (Start: 26 @29157 has 24 MA's), (Start: 33 @29133 has 1 MA's), (Start: 35 @29127 has 2 MA's), (57, 28950), (68, 28908),

Gene: ArcherNM_39 Start: 29506, Stop: 29213, Start Num: 23

Candidate Starts for ArcherNM_39:

(Start: 23 @29506 has 8 MA's), (Start: 33 @29482 has 1 MA's), (Start: 35 @29476 has 2 MA's),

Gene: Artemis2UCLA_42 Start: 26991, Stop: 26689, Start Num: 28

Candidate Starts for Artemis2UCLA_42:

(Start: 28 @26991 has 24 MA's), (Start: 29 @26988 has 53 MA's), (Start: 33 @26964 has 1 MA's),
(Start: 34 @26961 has 4 MA's), (Start: 35 @26958 has 2 MA's), (46, 26829), (55, 26796), (58, 26784),
(69, 26727), (72, 26709),

Gene: Bachome_41 Start: 28230, Stop: 27943, Start Num: 29

Candidate Starts for Bachome_41:

(16, 28320), (Start: 29 @28230 has 53 MA's), (32, 28215), (Start: 35 @28200 has 2 MA's), (37, 28164),
(46, 28071),

Gene: Baehexic_39 Start: 29028, Stop: 28768, Start Num: 30

Candidate Starts for Baehexic_39:

(Start: 30 @29028 has 21 MA's), (Start: 34 @29007 has 4 MA's), (57, 28827), (68, 28785),

Gene: BengiVuitton_39 Start: 28479, Stop: 28207, Start Num: 29

Candidate Starts for BengiVuitton_39:

(Start: 29 @28479 has 53 MA's), (Start: 33 @28455 has 1 MA's), (Start: 35 @28449 has 2 MA's), (39,
28377), (57, 28272), (68, 28230),

Gene: Benvolio_37 Start: 28210, Stop: 27911, Start Num: 26

Candidate Starts for Benvolio_37:

(Start: 26 @28210 has 24 MA's), (51, 28021), (59, 27985), (66, 27955), (70, 27943), (74, 27916),

Gene: BiancaTri92_40 Start: 29608, Stop: 29318, Start Num: 31

Candidate Starts for BiancaTri92_40:

(Start: 31 @29608 has 2 MA's), (Start: 33 @29593 has 1 MA's), (Start: 35 @29587 has 2 MA's), (37,
29551), (54, 29410), (61, 29380), (72, 29335), (74, 29323),

Gene: BlessJoy_42 Start: 27304, Stop: 27005, Start Num: 29

Candidate Starts for BlessJoy_42:

(Start: 20 @27310 has 1 MA's), (Start: 29 @27304 has 53 MA's), (Start: 33 @27280 has 1 MA's),
(Start: 34 @27277 has 4 MA's), (Start: 35 @27274 has 2 MA's), (46, 27145), (55, 27112), (58, 27100),
(72, 27025),

Gene: Blinn1_43 Start: 27412, Stop: 27077, Start Num: 29

Candidate Starts for Blinn1_43:

(19, 27421), (Start: 20 @27418 has 1 MA's), (Start: 29 @27412 has 53 MA's), (Start: 33 @27388 has 1
MA's), (Start: 34 @27385 has 4 MA's), (Start: 35 @27382 has 2 MA's), (42, 27280), (49, 27214), (58,
27172), (62, 27142), (72, 27097),

Gene: Blue7_43 Start: 27306, Stop: 27007, Start Num: 29

Candidate Starts for Blue7_43:

(Start: 20 @27312 has 1 MA's), (Start: 29 @27306 has 53 MA's), (Start: 33 @27282 has 1 MA's),
(Start: 34 @27279 has 4 MA's), (Start: 35 @27276 has 2 MA's), (46, 27147), (55, 27114), (58, 27102),
(69, 27045), (72, 27027),

Gene: Bowtie_40 Start: 28249, Stop: 27962, Start Num: 29

Candidate Starts for Bowtie_40:

(16, 28339), (Start: 29 @28249 has 53 MA's), (32, 28234), (Start: 34 @28222 has 4 MA's), (Start: 35 @28219 has 2 MA's), (37, 28183), (45, 28099), (46, 28090),

Gene: Bradman_39 Start: 27745, Stop: 27461, Start Num: 23

Candidate Starts for Bradman_39:

(Start: 23 @27745 has 8 MA's), (Start: 33 @27721 has 1 MA's), (Start: 34 @27718 has 4 MA's), (Start: 35 @27715 has 2 MA's), (46, 27586), (64, 27511), (66, 27505), (74, 27466),

Gene: Bud_39 Start: 27804, Stop: 27517, Start Num: 29

Candidate Starts for Bud_39:

(16, 27894), (Start: 29 @27804 has 53 MA's), (32, 27789), (Start: 34 @27777 has 4 MA's), (Start: 35 @27774 has 2 MA's), (37, 27738), (45, 27654), (46, 27645),

Gene: Buggy_42 Start: 29305, Stop: 29039, Start Num: 26

Candidate Starts for Buggy_42:

(15, 29398), (Start: 26 @29305 has 24 MA's), (Start: 34 @29278 has 4 MA's), (57, 29098), (68, 29056),

Gene: C3_38 Start: 28888, Stop: 28604, Start Num: 25

Candidate Starts for C3_38:

(Start: 25 @28888 has 14 MA's), (Start: 34 @28867 has 4 MA's), (Start: 35 @28864 has 2 MA's), (40, 28789), (46, 28738), (63, 28669), (64, 28663), (66, 28657), (72, 28630),

Gene: CRB1_42 Start: 29225, Stop: 28953, Start Num: 26

Candidate Starts for CRB1_42:

(15, 29318), (Start: 26 @29225 has 24 MA's), (Start: 33 @29201 has 1 MA's), (Start: 35 @29195 has 2 MA's), (39, 29123), (57, 29018), (68, 28976),

Gene: Candra_42 Start: 27330, Stop: 27028, Start Num: 28

Candidate Starts for Candra_42:

(Start: 28 @27330 has 24 MA's), (Start: 29 @27327 has 53 MA's), (Start: 33 @27303 has 1 MA's), (Start: 34 @27300 has 4 MA's), (Start: 35 @27297 has 2 MA's), (46, 27168), (55, 27135), (58, 27123), (72, 27048),

Gene: Caraxes_41 Start: 27515, Stop: 27231, Start Num: 29

Candidate Starts for Caraxes_41:

(Start: 28 @27518 has 24 MA's), (Start: 29 @27515 has 53 MA's), (Start: 33 @27491 has 1 MA's), (Start: 35 @27485 has 2 MA's), (42, 27383), (45, 27365), (69, 27266),

Gene: Centaur_41 Start: 29150, Stop: 28884, Start Num: 26

Candidate Starts for Centaur_41:

(15, 29243), (Start: 26 @29150 has 24 MA's), (Start: 34 @29123 has 4 MA's), (57, 28943), (68, 28901),

Gene: Changeling_41 Start: 29768, Stop: 29463, Start Num: 29

Candidate Starts for Changeling_41:

(Start: 29 @29768 has 53 MA's), (Start: 33 @29744 has 1 MA's), (Start: 35 @29738 has 2 MA's), (46, 29609),

Gene: Chartreuse_42 Start: 27241, Stop: 26939, Start Num: 28

Candidate Starts for Chartreuse_42:

(Start: 28 @27241 has 24 MA's), (Start: 29 @27238 has 53 MA's), (Start: 33 @27214 has 1 MA's), (Start: 34 @27211 has 4 MA's), (Start: 35 @27208 has 2 MA's), (46, 27079), (55, 27046), (58, 27034), (72, 26959),

Gene: Che12_43 Start: 27953, Stop: 27699, Start Num: 35

Candidate Starts for Che12_43:

(Start: 28 @27986 has 24 MA's), (Start: 29 @27983 has 53 MA's), (Start: 35 @27953 has 2 MA's), (42, 27851), (60, 27773), (66, 27743), (68, 27737), (73, 27704),

Gene: ChipMunk_43 Start: 30657, Stop: 30391, Start Num: 26

Candidate Starts for ChipMunk_43:

(9, 30882), (15, 30750), (Start: 26 @30657 has 24 MA's), (Start: 35 @30627 has 2 MA's), (57, 30450), (65, 30417), (68, 30408),

Gene: CloudWang3_42 Start: 27091, Stop: 26789, Start Num: 28

Candidate Starts for CloudWang3_42:

(Start: 28 @27091 has 24 MA's), (Start: 29 @27088 has 53 MA's), (Start: 33 @27064 has 1 MA's), (Start: 34 @27061 has 4 MA's), (Start: 35 @27058 has 2 MA's), (46, 26929), (55, 26896), (58, 26884), (69, 26827), (72, 26809),

Gene: Colin_43 Start: 29812, Stop: 29519, Start Num: 23

Candidate Starts for Colin_43:

(17, 29872), (Start: 23 @29812 has 8 MA's), (Start: 33 @29788 has 1 MA's), (Start: 34 @29785 has 4 MA's), (41, 29689), (45, 29662), (66, 29572),

Gene: Cookiedough_42 Start: 27306, Stop: 27004, Start Num: 28

Candidate Starts for Cookiedough_42:

(Start: 28 @27306 has 24 MA's), (Start: 33 @27279 has 1 MA's), (Start: 34 @27276 has 4 MA's), (Start: 35 @27273 has 2 MA's), (46, 27144), (55, 27111), (58, 27099), (62, 27069), (72, 27024),

Gene: Crucio_40 Start: 28740, Stop: 28474, Start Num: 26

Candidate Starts for Crucio_40:

(9, 28965), (15, 28833), (Start: 26 @28740 has 24 MA's), (Start: 33 @28716 has 1 MA's), (37, 28674), (57, 28533), (68, 28491),

Gene: D29_41 Start: 28789, Stop: 28505, Start Num: 25

Candidate Starts for D29_41:

(Start: 25 @28789 has 14 MA's), (Start: 34 @28768 has 4 MA's), (Start: 35 @28765 has 2 MA's), (40, 28690), (46, 28639), (64, 28564), (66, 28558), (72, 28531),

Gene: D32_43 Start: 28789, Stop: 28505, Start Num: 25

Candidate Starts for D32_43:

(Start: 25 @28789 has 14 MA's), (Start: 34 @28768 has 4 MA's), (Start: 35 @28765 has 2 MA's), (40, 28690), (46, 28639), (64, 28564), (66, 28558), (72, 28531),

Gene: DBQu4n_43 Start: 28789, Stop: 28505, Start Num: 25

Candidate Starts for DBQu4n_43:

(Start: 25 @28789 has 14 MA's), (Start: 34 @28768 has 4 MA's), (Start: 35 @28765 has 2 MA's), (40, 28690), (46, 28639), (63, 28570), (64, 28564), (66, 28558), (68, 28552), (72, 28531),

Gene: DaVinci_42 Start: 27292, Stop: 26993, Start Num: 29

Candidate Starts for DaVinci_42:

(Start: 28 @27295 has 24 MA's), (Start: 29 @27292 has 53 MA's), (Start: 33 @27268 has 1 MA's), (Start: 34 @27265 has 4 MA's), (Start: 35 @27262 has 2 MA's), (46, 27133), (55, 27100), (58, 27088), (72, 27013),

Gene: Dalmatian_41 Start: 29133, Stop: 28867, Start Num: 26

Candidate Starts for Dalmatian_41:

(9, 29358), (15, 29226), (Start: 26 @29133 has 24 MA's), (Start: 33 @29109 has 1 MA's), (Start: 35 @29103 has 2 MA's), (57, 28926), (68, 28884),

Gene: Deloris_38 Start: 28148, Stop: 27876, Start Num: 29

Candidate Starts for Deloris_38:

(Start: 29 @28148 has 53 MA's), (Start: 33 @28124 has 1 MA's), (Start: 35 @28118 has 2 MA's), (39, 28046), (57, 27941), (68, 27899),

Gene: Dignity_42 Start: 29289, Stop: 29026, Start Num: 30

Candidate Starts for Dignity_42:

(Start: 30 @29289 has 21 MA's), (Start: 34 @29265 has 4 MA's), (57, 29085), (68, 29043),

Gene: Dorothea_42 Start: 27313, Stop: 27011, Start Num: 28

Candidate Starts for Dorothea_42:

(Start: 28 @27313 has 24 MA's), (Start: 33 @27286 has 1 MA's), (Start: 34 @27283 has 4 MA's), (Start: 35 @27280 has 2 MA's), (46, 27151), (55, 27118), (58, 27106), (69, 27049), (72, 27031),

Gene: Drake55_42 Start: 29207, Stop: 28947, Start Num: 30

Candidate Starts for Drake55_42:

(Start: 30 @29207 has 21 MA's), (Start: 34 @29186 has 4 MA's), (37, 29147), (57, 29006), (68, 28964),

Gene: DudeLittle_39 Start: 28799, Stop: 28533, Start Num: 26

Candidate Starts for DudeLittle_39:

(9, 29024), (15, 28892), (Start: 26 @28799 has 24 MA's), (Start: 33 @28775 has 1 MA's), (Start: 35 @28769 has 2 MA's), (57, 28592), (68, 28550),

Gene: Duplo_43 Start: 28827, Stop: 28543, Start Num: 25

Candidate Starts for Duplo_43:

(Start: 25 @28827 has 14 MA's), (Start: 34 @28806 has 4 MA's), (Start: 35 @28803 has 2 MA's), (40, 28728), (46, 28677), (63, 28608), (64, 28602), (66, 28596), (68, 28590), (72, 28569),

Gene: EZMoney23_40 Start: 29042, Stop: 28743, Start Num: 23

Candidate Starts for EZMoney23_40:

(Start: 23 @29042 has 8 MA's), (Start: 33 @29018 has 1 MA's), (Start: 35 @29012 has 2 MA's), (38, 28949), (56, 28853), (68, 28790), (72, 28769),

Gene: Ebony_40 Start: 28204, Stop: 27917, Start Num: 29

Candidate Starts for Ebony_40:

(16, 28294), (Start: 29 @28204 has 53 MA's), (32, 28189), (Start: 34 @28177 has 4 MA's), (37, 28138), (45, 28054), (46, 28045),

Gene: Echild_40 Start: 28234, Stop: 27935, Start Num: 26

Candidate Starts for Echild_40:

(Start: 26 @28234 has 24 MA's), (51, 28045), (59, 28009), (66, 27979), (70, 27967), (74, 27940),

Gene: Equemioh13_41 Start: 29147, Stop: 28887, Start Num: 30

Candidate Starts for Equemioh13_41:

(Start: 30 @29147 has 21 MA's), (Start: 34 @29126 has 4 MA's), (57, 28946), (68, 28904),

Gene: EricB_42 Start: 27284, Stop: 26985, Start Num: 29

Candidate Starts for EricB_42:

(Start: 28 @27287 has 24 MA's), (Start: 29 @27284 has 53 MA's), (Start: 33 @27260 has 1 MA's), (Start: 34 @27257 has 4 MA's), (Start: 35 @27254 has 2 MA's), (46, 27125), (55, 27092), (58, 27080), (72, 27005),

Gene: Et2Brutus_39 Start: 28164, Stop: 27877, Start Num: 29

Candidate Starts for Et2Brutus_39:

(16, 28254), (Start: 29 @28164 has 53 MA's), (32, 28149), (Start: 34 @28137 has 4 MA's), (37, 28098), (45, 28014), (46, 28005),

Gene: EvilGenius_43 Start: 30661, Stop: 30395, Start Num: 26

Candidate Starts for EvilGenius_43:

(9, 30886), (15, 30754), (Start: 26 @30661 has 24 MA's), (Start: 35 @30631 has 2 MA's), (57, 30454), (65, 30421), (68, 30412),

Gene: Fameo_40 Start: 28927, Stop: 28661, Start Num: 26

Candidate Starts for Fameo_40:

(9, 29152), (15, 29020), (Start: 26 @28927 has 24 MA's), (32, 28912), (Start: 33 @28903 has 1 MA's), (Start: 35 @28897 has 2 MA's), (44, 28780), (57, 28720), (68, 28678),

Gene: Fibonacci_39 Start: 27796, Stop: 27509, Start Num: 29

Candidate Starts for Fibonacci_39:

(16, 27886), (Start: 29 @27796 has 53 MA's), (32, 27781), (Start: 34 @27769 has 4 MA's), (Start: 35 @27766 has 2 MA's), (37, 27730), (45, 27646), (46, 27637),

Gene: FiringLine_40 Start: 28721, Stop: 28455, Start Num: 26

Candidate Starts for FiringLine_40:

(Start: 26 @28721 has 24 MA's), (Start: 33 @28697 has 1 MA's), (37, 28655), (57, 28514), (68, 28472),

Gene: First_0039 Start: 28390, Stop: 28103, Start Num: 29

Candidate Starts for First_0039:

(Start: 29 @28390 has 53 MA's), (Start: 33 @28366 has 1 MA's), (Start: 35 @28360 has 2 MA's), (57, 28183), (68, 28141),

Gene: Flare16_40 Start: 28813, Stop: 28547, Start Num: 26

Candidate Starts for Flare16_40:

(15, 28906), (Start: 26 @28813 has 24 MA's), (Start: 34 @28786 has 4 MA's), (57, 28606), (68, 28564),

Gene: Flaverint_40 Start: 28243, Stop: 27956, Start Num: 29

Candidate Starts for Flaverint_40:

(5, 28537), (6, 28528), (13, 28420), (16, 28333), (Start: 29 @28243 has 53 MA's), (32, 28228), (Start: 34 @28216 has 4 MA's), (37, 28177), (45, 28093), (46, 28084),

Gene: Garak_43 Start: 27310, Stop: 27011, Start Num: 29

Candidate Starts for Garak_43:

(Start: 20 @27316 has 1 MA's), (Start: 29 @27310 has 53 MA's), (Start: 33 @27286 has 1 MA's), (Start: 34 @27283 has 4 MA's), (Start: 35 @27280 has 2 MA's), (46, 27151), (55, 27118), (58, 27106), (62, 27076), (72, 27031),

Gene: Georgie2_41 Start: 28766, Stop: 28500, Start Num: 26

Candidate Starts for Georgie2_41:

(Start: 26 @28766 has 24 MA's), (Start: 33 @28742 has 1 MA's), (Start: 35 @28736 has 2 MA's), (37, 28700), (57, 28559), (68, 28517),

Gene: Gilberta_40 Start: 28233, Stop: 27946, Start Num: 29

Candidate Starts for Gilberta_40:

(16, 28323), (Start: 29 @28233 has 53 MA's), (32, 28218), (Start: 34 @28206 has 4 MA's), (Start: 35 @28203 has 2 MA's), (37, 28167), (45, 28083), (46, 28074),

Gene: Gladiator_42 Start: 27292, Stop: 26993, Start Num: 29

Candidate Starts for Gladiator_42:

(Start: 28 @27295 has 24 MA's), (Start: 29 @27292 has 53 MA's), (Start: 33 @27268 has 1 MA's), (Start: 34 @27265 has 4 MA's), (Start: 35 @27262 has 2 MA's), (46, 27133), (55, 27100), (58, 27088), (62, 27058), (72, 27013),

Gene: Gratitude_40 Start: 29147, Stop: 28887, Start Num: 30

Candidate Starts for Gratitude_40:

(Start: 30 @29147 has 21 MA's), (Start: 34 @29126 has 4 MA's), (57, 28946), (68, 28904),

Gene: GreedyLawyer_42 Start: 27291, Stop: 26992, Start Num: 29

Candidate Starts for GreedyLawyer_42:

(Start: 28 @27294 has 24 MA's), (Start: 29 @27291 has 53 MA's), (Start: 33 @27267 has 1 MA's), (Start: 34 @27264 has 4 MA's), (Start: 35 @27261 has 2 MA's), (46, 27132), (55, 27099), (58, 27087), (72, 27012),

Gene: Gruunaga_42 Start: 27294, Stop: 26992, Start Num: 28

Candidate Starts for Gruunaga_42:

(Start: 28 @27294 has 24 MA's), (Start: 29 @27291 has 53 MA's), (Start: 33 @27267 has 1 MA's), (Start: 34 @27264 has 4 MA's), (Start: 35 @27261 has 2 MA's), (46, 27132), (55, 27099), (58, 27087), (62, 27057), (72, 27012),

Gene: Hammer_42 Start: 27122, Stop: 26817, Start Num: 20

Candidate Starts for Hammer_42:

(Start: 20 @27122 has 1 MA's), (Start: 29 @27116 has 53 MA's), (Start: 33 @27092 has 1 MA's), (Start: 34 @27089 has 4 MA's), (Start: 35 @27086 has 2 MA's), (46, 26957), (55, 26924), (58, 26912), (69, 26855), (72, 26837),

Gene: HarryHoudini_41 Start: 29081, Stop: 28821, Start Num: 30

Candidate Starts for HarryHoudini_41:

(Start: 30 @29081 has 21 MA's), (Start: 34 @29060 has 4 MA's), (57, 28880), (68, 28838),

Gene: Heffalump_40 Start: 29677, Stop: 29393, Start Num: 23

Candidate Starts for Heffalump_40:

(11, 29878), (17, 29737), (Start: 23 @29677 has 8 MA's), (Start: 33 @29653 has 1 MA's), (Start: 35 @29647 has 2 MA's), (42, 29545), (43, 29542), (46, 29518), (72, 29410),

Gene: Helmet_43 Start: 27310, Stop: 27011, Start Num: 29

Candidate Starts for Helmet_43:

(Start: 20 @27316 has 1 MA's), (Start: 29 @27310 has 53 MA's), (Start: 33 @27286 has 1 MA's), (Start: 34 @27283 has 4 MA's), (Start: 35 @27280 has 2 MA's), (46, 27151), (55, 27118), (58, 27106), (62, 27076), (72, 27031),

Gene: Herbertwm_38 Start: 27747, Stop: 27424, Start Num: 29

Candidate Starts for Herbertwm_38:

(Start: 29 @27747 has 53 MA's), (Start: 35 @27717 has 2 MA's), (36, 27702), (45, 27597), (72, 27441),

Gene: Hexamo_42 Start: 27052, Stop: 26777, Start Num: 33

Candidate Starts for Hexamo_42:

(Start: 33 @27052 has 1 MA's), (Start: 34 @27049 has 4 MA's), (Start: 35 @27046 has 2 MA's), (46, 26917), (55, 26884), (58, 26872), (69, 26815), (72, 26797),

Gene: Hoot_42 Start: 27269, Stop: 26970, Start Num: 29

Candidate Starts for Hoot_42:

(Start: 28 @27272 has 24 MA's), (Start: 29 @27269 has 53 MA's), (Start: 33 @27245 has 1 MA's), (Start: 34 @27242 has 4 MA's), (Start: 35 @27239 has 2 MA's), (46, 27110), (55, 27077), (58, 27065), (72, 26990),

Gene: Hutc2_39 Start: 27796, Stop: 27509, Start Num: 29

Candidate Starts for Hutc2_39:

(16, 27886), (Start: 29 @27796 has 53 MA's), (32, 27781), (Start: 34 @27769 has 4 MA's), (Start: 35 @27766 has 2 MA's), (37, 27730), (45, 27646), (46, 27637),

Gene: Indra_44 Start: 27311, Stop: 27012, Start Num: 29

Candidate Starts for Indra_44:

(Start: 20 @27317 has 1 MA's), (Start: 29 @27311 has 53 MA's), (Start: 33 @27287 has 1 MA's), (Start: 34 @27284 has 4 MA's), (Start: 35 @27281 has 2 MA's), (46, 27152), (55, 27119), (58, 27107), (62, 27077), (72, 27032),

Gene: Insomnia_40 Start: 28301, Stop: 28014, Start Num: 29

Candidate Starts for Insomnia_40:

(16, 28391), (Start: 29 @28301 has 53 MA's), (32, 28286), (Start: 34 @28274 has 4 MA's), (Start: 35 @28271 has 2 MA's), (37, 28235), (45, 28151), (46, 28142),

Gene: IronMan_40 Start: 29940, Stop: 29650, Start Num: 29

Candidate Starts for IronMan_40:

(Start: 29 @29940 has 53 MA's), (Start: 35 @29910 has 2 MA's), (64, 29700), (72, 29667),

Gene: Iwokeuplikedis_43 Start: 28853, Stop: 28563, Start Num: 29

Candidate Starts for Iwokeuplikedis_43:

(3, 29210), (12, 29054), (18, 28913), (Start: 29 @28853 has 53 MA's), (Start: 34 @28826 has 4 MA's), (44, 28706), (51, 28664), (61, 28625), (64, 28613), (66, 28607), (72, 28580),

Gene: Jabith_40 Start: 28302, Stop: 28015, Start Num: 29

Candidate Starts for Jabith_40:

(16, 28392), (Start: 29 @28302 has 53 MA's), (32, 28287), (Start: 34 @28275 has 4 MA's), (Start: 35 @28272 has 2 MA's), (37, 28236), (45, 28152), (46, 28143),

Gene: Jeffabunny_42 Start: 27115, Stop: 26813, Start Num: 28

Candidate Starts for Jeffabunny_42:

(Start: 28 @27115 has 24 MA's), (Start: 33 @27088 has 1 MA's), (Start: 34 @27085 has 4 MA's), (Start: 35 @27082 has 2 MA's), (46, 26953), (55, 26920), (58, 26908), (69, 26851), (72, 26833),

Gene: Jerm_42 Start: 29282, Stop: 29019, Start Num: 30

Candidate Starts for Jerm_42:

(Start: 30 @29282 has 21 MA's), (Start: 34 @29258 has 4 MA's), (57, 29078), (68, 29036),

Gene: JewelBug_43 Start: 27315, Stop: 27016, Start Num: 29

Candidate Starts for JewelBug_43:

(Start: 20 @27321 has 1 MA's), (Start: 29 @27315 has 53 MA's), (Start: 33 @27291 has 1 MA's), (Start: 34 @27288 has 4 MA's), (46, 27156), (55, 27123), (58, 27111), (62, 27081), (72, 27036),

Gene: Jordennis_42 Start: 27302, Stop: 27000, Start Num: 28

Candidate Starts for Jordennis_42:

(Start: 28 @27302 has 24 MA's), (Start: 33 @27275 has 1 MA's), (Start: 34 @27272 has 4 MA's),
(Start: 35 @27269 has 2 MA's), (46, 27140), (55, 27107), (58, 27095), (69, 27038), (72, 27020),

Gene: Joselito_40 Start: 28242, Stop: 27955, Start Num: 29

Candidate Starts for Joselito_40:

(5, 28536), (6, 28527), (13, 28419), (16, 28332), (Start: 29 @28242 has 53 MA's), (32, 28227), (Start:
34 @28215 has 4 MA's), (37, 28176), (45, 28092), (46, 28083),

Gene: JoshKayV_42 Start: 29245, Stop: 28982, Start Num: 30

Candidate Starts for JoshKayV_42:

(9, 29473), (15, 29341), (Start: 26 @29248 has 24 MA's), (Start: 30 @29245 has 21 MA's), (Start: 35
@29218 has 2 MA's), (44, 29101), (57, 29041), (65, 29008), (67, 29002), (68, 28999),

Gene: Jsquared_39 Start: 27882, Stop: 27598, Start Num: 23

Candidate Starts for Jsquared_39:

(Start: 23 @27882 has 8 MA's), (Start: 33 @27858 has 1 MA's), (Start: 34 @27855 has 4 MA's), (Start:
35 @27852 has 2 MA's), (46, 27723), (60, 27672), (64, 27648), (66, 27642), (68, 27636), (74, 27603),

Gene: Kalpine_41 Start: 29680, Stop: 29414, Start Num: 34

Candidate Starts for Kalpine_41:

(14, 29824), (Start: 34 @29680 has 4 MA's), (42, 29575), (65, 29467),

Gene: Kazan_43 Start: 27300, Stop: 26998, Start Num: 28

Candidate Starts for Kazan_43:

(Start: 28 @27300 has 24 MA's), (Start: 29 @27297 has 53 MA's), (Start: 33 @27273 has 1 MA's),
(Start: 34 @27270 has 4 MA's), (Start: 35 @27267 has 2 MA's), (46, 27138), (55, 27105), (58, 27093),
(72, 27018),

Gene: Kerberos_43 Start: 28789, Stop: 28505, Start Num: 25

Candidate Starts for Kerberos_43:

(Start: 25 @28789 has 14 MA's), (Start: 34 @28768 has 4 MA's), (Start: 35 @28765 has 2 MA's), (40,
28690), (46, 28639), (63, 28570), (64, 28564), (66, 28558), (68, 28552), (72, 28531),

Gene: KingCyrus_43 Start: 30656, Stop: 30390, Start Num: 26

Candidate Starts for KingCyrus_43:

(9, 30881), (15, 30749), (Start: 26 @30656 has 24 MA's), (Start: 35 @30626 has 2 MA's), (57, 30449),
(65, 30416), (68, 30407),

Gene: Kipper29_42 Start: 27313, Stop: 27011, Start Num: 28

Candidate Starts for Kipper29_42:

(Start: 28 @27313 has 24 MA's), (Start: 33 @27286 has 1 MA's), (Start: 34 @27283 has 4 MA's),
(Start: 35 @27280 has 2 MA's), (46, 27151), (55, 27118), (58, 27106), (62, 27076), (72, 27031),

Gene: Koduck_41 Start: 28082, Stop: 27801, Start Num: 22

Candidate Starts for Koduck_41:

(22, 28082), (Start: 35 @28052 has 2 MA's), (37, 28016), (42, 27953), (60, 27875), (64, 27851), (66,
27845), (72, 27818),

Gene: Koko_42 Start: 27655, Stop: 27356, Start Num: 29

Candidate Starts for Koko_42:

(Start: 20 @27661 has 1 MA's), (Start: 29 @27655 has 53 MA's), (Start: 33 @27631 has 1 MA's),
(Start: 34 @27628 has 4 MA's), (Start: 35 @27625 has 2 MA's), (46, 27496), (55, 27463), (58, 27451),
(69, 27394), (72, 27376),

Gene: L5_41 Start: 28021, Stop: 27770, Start Num: 35

Candidate Starts for L5_41:

(22, 28051), (Start: 35 @28021 has 2 MA's), (37, 27985), (42, 27922), (60, 27844), (64, 27820), (66,
27814), (72, 27787),

Gene: LadyBird_43 Start: 29187, Stop: 28915, Start Num: 26

Candidate Starts for LadyBird_43:

(15, 29280), (Start: 26 @29187 has 24 MA's), (Start: 33 @29163 has 1 MA's), (Start: 35 @29157 has 2
MA's), (57, 28980), (68, 28938),

Gene: Landor_40 Start: 30027, Stop: 29764, Start Num: 30

Candidate Starts for Landor_40:

(1, 30456), (Start: 30 @30027 has 21 MA's), (Start: 35 @30000 has 2 MA's), (37, 29964), (57, 29823),
(68, 29781),

Gene: Larenn_40 Start: 29050, Stop: 28721, Start Num: 27

Candidate Starts for Larenn_40:

(15, 29143), (Start: 27 @29050 has 2 MA's), (Start: 34 @29023 has 4 MA's), (Start: 35 @29020 has 2
MA's), (46, 28891),

Gene: Leogania_40 Start: 29975, Stop: 29685, Start Num: 31

Candidate Starts for Leogania_40:

(Start: 31 @29975 has 2 MA's), (Start: 33 @29960 has 1 MA's), (Start: 35 @29954 has 2 MA's), (37,
29918), (54, 29777), (61, 29747), (72, 29702), (74, 29690),

Gene: Leviathan_42 Start: 29338, Stop: 29075, Start Num: 30

Candidate Starts for Leviathan_42:

(Start: 30 @29338 has 21 MA's), (Start: 34 @29314 has 4 MA's), (57, 29134), (68, 29092),

Gene: LilTurb_41 Start: 29171, Stop: 28908, Start Num: 30

Candidate Starts for LilTurb_41:

(Start: 30 @29171 has 21 MA's), (Start: 34 @29147 has 4 MA's), (57, 28967), (68, 28925),

Gene: Lilbunny_41 Start: 27089, Stop: 26787, Start Num: 28

Candidate Starts for Lilbunny_41:

(Start: 28 @27089 has 24 MA's), (Start: 33 @27062 has 1 MA's), (Start: 34 @27059 has 4 MA's),
(Start: 35 @27056 has 2 MA's), (46, 26927), (55, 26894), (58, 26882), (69, 26825), (72, 26807),

Gene: LionsBait_41 Start: 30101, Stop: 29811, Start Num: 29

Candidate Starts for LionsBait_41:

(Start: 29 @30101 has 53 MA's), (Start: 34 @30074 has 4 MA's), (42, 29969), (44, 29954), (48, 29933),
(65, 29861),

Gene: Loser_42 Start: 29693, Stop: 29427, Start Num: 34

Candidate Starts for Loser_42:

(17, 29780), (Start: 34 @29693 has 4 MA's), (57, 29507), (68, 29465),

Gene: Lucivia_40 Start: 28291, Stop: 28004, Start Num: 29

Candidate Starts for Lucivia_40:

(16, 28381), (Start: 29 @28291 has 53 MA's), (32, 28276), (Start: 34 @28264 has 4 MA's), (Start: 35 @28261 has 2 MA's), (37, 28225), (45, 28141), (46, 28132),

Gene: Lucyedi_42 Start: 28643, Stop: 28344, Start Num: 29

Candidate Starts for Lucyedi_42:

(Start: 28 @28646 has 24 MA's), (Start: 29 @28643 has 53 MA's), (Start: 35 @28613 has 2 MA's), (46, 28484), (55, 28451), (58, 28439), (62, 28409), (72, 28364),

Gene: MaCh_40 Start: 28229, Stop: 27942, Start Num: 29

Candidate Starts for MaCh_40:

(16, 28319), (Start: 29 @28229 has 53 MA's), (32, 28214), (Start: 35 @28199 has 2 MA's), (37, 28163), (46, 28070),

Gene: Mabel_40 Start: 28214, Stop: 27927, Start Num: 29

Candidate Starts for Mabel_40:

(16, 28304), (Start: 29 @28214 has 53 MA's), (32, 28199), (Start: 35 @28184 has 2 MA's), (37, 28148), (45, 28064), (46, 28055),

Gene: MajorMajor_39 Start: 27745, Stop: 27461, Start Num: 23

Candidate Starts for MajorMajor_39:

(Start: 23 @27745 has 8 MA's), (Start: 33 @27721 has 1 MA's), (Start: 34 @27718 has 4 MA's), (Start: 35 @27715 has 2 MA's), (46, 27586), (64, 27511), (66, 27505), (74, 27466),

Gene: Malec_41 Start: 29614, Stop: 29285, Start Num: 27

Candidate Starts for Malec_41:

(15, 29707), (Start: 27 @29614 has 2 MA's), (Start: 34 @29587 has 4 MA's), (Start: 35 @29584 has 2 MA's), (46, 29455),

Gene: McFly_42 Start: 27291, Stop: 26992, Start Num: 29

Candidate Starts for McFly_42:

(Start: 28 @27294 has 24 MA's), (Start: 29 @27291 has 53 MA's), (Start: 33 @27267 has 1 MA's), (Start: 34 @27264 has 4 MA's), (Start: 35 @27261 has 2 MA's), (46, 27132), (55, 27099), (58, 27087), (72, 27012),

Gene: MiculUcigas_40 Start: 28806, Stop: 28546, Start Num: 30

Candidate Starts for MiculUcigas_40:

(Start: 30 @28806 has 21 MA's), (Start: 34 @28785 has 4 MA's), (57, 28605), (68, 28563),

Gene: MissWhite_39 Start: 27357, Stop: 27070, Start Num: 29

Candidate Starts for MissWhite_39:

(Start: 29 @27357 has 53 MA's), (32, 27342), (37, 27291), (45, 27207), (46, 27198), (60, 27147),

Gene: Mulciber_39 Start: 27793, Stop: 27506, Start Num: 29

Candidate Starts for Mulciber_39:

(16, 27883), (Start: 29 @27793 has 53 MA's), (32, 27778), (Start: 34 @27766 has 4 MA's), (Start: 35 @27763 has 2 MA's), (37, 27727), (45, 27643), (46, 27634),

Gene: Munch_40 Start: 28242, Stop: 27955, Start Num: 29

Candidate Starts for Munch_40:

(5, 28536), (6, 28527), (13, 28419), (16, 28332), (Start: 29 @28242 has 53 MA's), (32, 28227), (Start: 34 @28215 has 4 MA's), (37, 28176), (45, 28092), (46, 28083),

Gene: NaSiaTalie_40 Start: 28810, Stop: 28544, Start Num: 26

Candidate Starts for NaSiaTalie_40:

(15, 28903), (Start: 26 @28810 has 24 MA's), (Start: 34 @28783 has 4 MA's), (57, 28603), (68, 28561),

Gene: Naji_43 Start: 28789, Stop: 28505, Start Num: 25

Candidate Starts for Naji_43:

(Start: 25 @28789 has 14 MA's), (Start: 34 @28768 has 4 MA's), (Start: 35 @28765 has 2 MA's), (40, 28690), (46, 28639), (64, 28564), (66, 28558), (72, 28531),

Gene: Neeharika16_42 Start: 27305, Stop: 27003, Start Num: 28

Candidate Starts for Neeharika16_42:

(Start: 28 @27305 has 24 MA's), (Start: 33 @27278 has 1 MA's), (Start: 34 @27275 has 4 MA's), (Start: 35 @27272 has 2 MA's), (46, 27143), (55, 27110), (58, 27098), (62, 27068), (72, 27023),

Gene: Newrala_42 Start: 27305, Stop: 27003, Start Num: 28

Candidate Starts for Newrala_42:

(Start: 28 @27305 has 24 MA's), (Start: 33 @27278 has 1 MA's), (Start: 34 @27275 has 4 MA's), (Start: 35 @27272 has 2 MA's), (46, 27143), (55, 27110), (58, 27098), (62, 27068), (72, 27023),

Gene: NicoleTera_42 Start: 29755, Stop: 29462, Start Num: 23

Candidate Starts for NicoleTera_42:

(11, 29956), (Start: 23 @29755 has 8 MA's), (Start: 33 @29731 has 1 MA's), (Start: 35 @29725 has 2 MA's), (46, 29596),

Gene: Odin_40 Start: 27688, Stop: 27404, Start Num: 29

Candidate Starts for Odin_40:

(Start: 28 @27691 has 24 MA's), (Start: 29 @27688 has 53 MA's), (Start: 33 @27664 has 1 MA's), (Start: 35 @27658 has 2 MA's), (42, 27556), (45, 27538), (69, 27439),

Gene: Orange_39 Start: 27791, Stop: 27504, Start Num: 29

Candidate Starts for Orange_39:

(16, 27881), (Start: 29 @27791 has 53 MA's), (32, 27776), (Start: 34 @27764 has 4 MA's), (Start: 35 @27761 has 2 MA's), (37, 27725), (45, 27641), (46, 27632),

Gene: PP_44 Start: 32996, Stop: 32706, Start Num: 29

Candidate Starts for PP_44:

(Start: 29 @32996 has 53 MA's), (Start: 33 @32972 has 1 MA's), (Start: 34 @32969 has 4 MA's), (46, 32837), (60, 32786),

Gene: PainterBoy_42 Start: 28579, Stop: 28280, Start Num: 29

Candidate Starts for PainterBoy_42:

(Start: 28 @28582 has 24 MA's), (Start: 29 @28579 has 53 MA's), (Start: 35 @28549 has 2 MA's), (46, 28420), (55, 28387), (58, 28375), (62, 28345), (72, 28300),

Gene: Petersenfast_38 Start: 27798, Stop: 27511, Start Num: 29

Candidate Starts for Petersenfast_38:

(16, 27888), (Start: 29 @27798 has 53 MA's), (32, 27783), (Start: 34 @27771 has 4 MA's), (Start: 35 @27768 has 2 MA's), (37, 27732), (45, 27648), (46, 27639),

Gene: Ph8s_43 Start: 28224, Stop: 27943, Start Num: 30

Candidate Starts for Ph8s_43:

(8, 28479), (Start: 30 @28224 has 21 MA's), (Start: 33 @28203 has 1 MA's), (Start: 35 @28197 has 2 MA's), (45, 28077), (69, 27978),

Gene: Piro94_39 Start: 28999, Stop: 28736, Start Num: 30
Candidate Starts for Piro94_39:
(Start: 30 @28999 has 21 MA's), (Start: 34 @28975 has 4 MA's), (37, 28936), (57, 28795), (68, 28753),

Gene: Pmask_42 Start: 27306, Stop: 27004, Start Num: 28
Candidate Starts for Pmask_42:
(Start: 28 @27306 has 24 MA's), (Start: 33 @27279 has 1 MA's), (Start: 34 @27276 has 4 MA's),
(Start: 35 @27273 has 2 MA's), (46, 27144), (55, 27111), (58, 27099), (62, 27069), (72, 27024),

Gene: Polyphemus_42 Start: 27301, Stop: 27002, Start Num: 29
Candidate Starts for Polyphemus_42:
(Start: 20 @27307 has 1 MA's), (Start: 29 @27301 has 53 MA's), (Start: 33 @27277 has 1 MA's),
(Start: 34 @27274 has 4 MA's), (Start: 35 @27271 has 2 MA's), (46, 27142), (55, 27109), (58, 27097),
(62, 27067), (72, 27022),

Gene: Pomar16_43 Start: 28830, Stop: 28546, Start Num: 25
Candidate Starts for Pomar16_43:
(Start: 25 @28830 has 14 MA's), (Start: 34 @28809 has 4 MA's), (Start: 35 @28806 has 2 MA's), (40,
28731), (46, 28680), (63, 28611), (64, 28605), (66, 28599), (68, 28593), (72, 28572),

Gene: Power_39 Start: 28774, Stop: 28508, Start Num: 26
Candidate Starts for Power_39:
(9, 28999), (15, 28867), (Start: 26 @28774 has 24 MA's), (Start: 33 @28750 has 1 MA's), (Start: 35
@28744 has 2 MA's), (37, 28708), (57, 28567), (68, 28525),

Gene: Priamo_43 Start: 27355, Stop: 27053, Start Num: 28
Candidate Starts for Priamo_43:
(7, 27595), (Start: 28 @27355 has 24 MA's), (Start: 33 @27328 has 1 MA's), (Start: 34 @27325 has 4
MA's), (Start: 35 @27322 has 2 MA's), (46, 27193), (55, 27160), (58, 27148), (69, 27091), (72, 27073),

Gene: Pukovnik_39 Start: 29602, Stop: 29312, Start Num: 29
Candidate Starts for Pukovnik_39:
(Start: 29 @29602 has 53 MA's), (Start: 33 @29578 has 1 MA's), (37, 29536), (51, 29413), (61, 29374),
(64, 29362), (72, 29329),

Gene: QueenB2_40 Start: 28845, Stop: 28579, Start Num: 26
Candidate Starts for QueenB2_40:
(Start: 26 @28845 has 24 MA's), (32, 28830), (Start: 33 @28821 has 1 MA's), (Start: 35 @28815 has 2
MA's), (44, 28698), (57, 28638), (68, 28596),

Gene: QueenBeesly_40 Start: 28721, Stop: 28455, Start Num: 26
Candidate Starts for QueenBeesly_40:
(Start: 26 @28721 has 24 MA's), (Start: 33 @28697 has 1 MA's), (37, 28655), (57, 28514), (68, 28472),

Gene: Quokka_38 Start: 27745, Stop: 27461, Start Num: 23
Candidate Starts for Quokka_38:
(Start: 23 @27745 has 8 MA's), (Start: 33 @27721 has 1 MA's), (Start: 34 @27718 has 4 MA's), (Start:
35 @27715 has 2 MA's), (46, 27586), (64, 27511), (66, 27505), (74, 27466),

Gene: RedRock_42 Start: 29906, Stop: 29643, Start Num: 34
Candidate Starts for RedRock_42:
(17, 29993), (Start: 34 @29906 has 4 MA's), (57, 29720), (67, 29681),

Gene: Retro23_41 Start: 29129, Stop: 28863, Start Num: 26

Candidate Starts for Retro23_41:

(9, 29354), (15, 29222), (Start: 26 @29129 has 24 MA's), (Start: 33 @29105 has 1 MA's), (Start: 35 @29099 has 2 MA's), (57, 28922), (68, 28880),

Gene: Rifter_42 Start: 27079, Stop: 26780, Start Num: 29

Candidate Starts for Rifter_42:

(Start: 20 @27085 has 1 MA's), (Start: 29 @27079 has 53 MA's), (Start: 33 @27055 has 1 MA's), (Start: 34 @27052 has 4 MA's), (Start: 35 @27049 has 2 MA's), (46, 26920), (55, 26887), (58, 26875), (69, 26818), (72, 26800),

Gene: Roksolana_43 Start: 27339, Stop: 27040, Start Num: 29

Candidate Starts for Roksolana_43:

(Start: 28 @27342 has 24 MA's), (Start: 29 @27339 has 53 MA's), (Start: 33 @27315 has 1 MA's), (Start: 34 @27312 has 4 MA's), (Start: 35 @27309 has 2 MA's), (46, 27180), (55, 27147), (58, 27135), (62, 27105), (72, 27060),

Gene: Salz_39 Start: 28152, Stop: 27865, Start Num: 29

Candidate Starts for Salz_39:

(16, 28242), (Start: 29 @28152 has 53 MA's), (32, 28137), (Start: 34 @28125 has 4 MA's), (Start: 35 @28122 has 2 MA's), (37, 28086), (45, 28002), (46, 27993),

Gene: SemperFi_41 Start: 28989, Stop: 28723, Start Num: 26

Candidate Starts for SemperFi_41:

(Start: 26 @28989 has 24 MA's), (Start: 33 @28965 has 1 MA's), (Start: 35 @28959 has 2 MA's), (57, 28782), (68, 28740),

Gene: Serenity_40 Start: 27868, Stop: 27584, Start Num: 23

Candidate Starts for Serenity_40:

(Start: 23 @27868 has 8 MA's), (Start: 33 @27844 has 1 MA's), (Start: 34 @27841 has 4 MA's), (Start: 35 @27838 has 2 MA's), (46, 27709), (64, 27634), (66, 27628), (74, 27589),

Gene: Sham4_39 Start: 27797, Stop: 27510, Start Num: 29

Candidate Starts for Sham4_39:

(16, 27887), (Start: 29 @27797 has 53 MA's), (32, 27782), (Start: 34 @27770 has 4 MA's), (Start: 35 @27767 has 2 MA's), (37, 27731), (45, 27647), (46, 27638),

Gene: Sknot_42 Start: 28813, Stop: 28547, Start Num: 26

Candidate Starts for Sknot_42:

(15, 28906), (Start: 26 @28813 has 24 MA's), (Start: 34 @28786 has 4 MA's), (57, 28606), (68, 28564),

Gene: Smeagan_43 Start: 29425, Stop: 29162, Start Num: 30

Candidate Starts for Smeagan_43:

(Start: 30 @29425 has 21 MA's), (Start: 34 @29401 has 4 MA's), (57, 29221), (68, 29179),

Gene: SmellyB_42 Start: 27294, Stop: 26992, Start Num: 28

Candidate Starts for SmellyB_42:

(Start: 28 @27294 has 24 MA's), (Start: 29 @27291 has 53 MA's), (Start: 33 @27267 has 1 MA's), (Start: 34 @27264 has 4 MA's), (Start: 35 @27261 has 2 MA's), (46, 27132), (55, 27099), (58, 27087), (72, 27012),

Gene: SnapTap_40 Start: 28800, Stop: 28534, Start Num: 26

Candidate Starts for SnapTap_40:

(9, 29025), (15, 28893), (Start: 26 @28800 has 24 MA's), (Start: 33 @28776 has 1 MA's), (Start: 35 @28770 has 2 MA's), (57, 28593), (68, 28551),

Gene: Snape_39 Start: 27795, Stop: 27508, Start Num: 29

Candidate Starts for Snape_39:

(16, 27885), (Start: 29 @27795 has 53 MA's), (32, 27780), (Start: 34 @27768 has 4 MA's), (Start: 35 @27765 has 2 MA's), (37, 27729), (45, 27645), (46, 27636),

Gene: StarStuff_43 Start: 28792, Stop: 28508, Start Num: 25

Candidate Starts for StarStuff_43:

(Start: 25 @28792 has 14 MA's), (Start: 34 @28771 has 4 MA's), (Start: 35 @28768 has 2 MA's), (40, 28693), (46, 28642), (63, 28573), (64, 28567), (66, 28561), (72, 28534),

Gene: SuperAwesome_42 Start: 27305, Stop: 27003, Start Num: 28

Candidate Starts for SuperAwesome_42:

(Start: 28 @27305 has 24 MA's), (Start: 33 @27278 has 1 MA's), (Start: 34 @27275 has 4 MA's), (Start: 35 @27272 has 2 MA's), (46, 27143), (55, 27110), (58, 27098), (62, 27068), (72, 27023),

Gene: SuperCallie99_42 Start: 27304, Stop: 27002, Start Num: 28

Candidate Starts for SuperCallie99_42:

(4, 27634), (7, 27544), (Start: 28 @27304 has 24 MA's), (Start: 29 @27301 has 53 MA's), (Start: 33 @27277 has 1 MA's), (Start: 34 @27274 has 4 MA's), (Start: 35 @27271 has 2 MA's), (46, 27142), (55, 27109), (58, 27097), (62, 27067), (72, 27022),

Gene: Superchunk_40 Start: 27515, Stop: 27231, Start Num: 29

Candidate Starts for Superchunk_40:

(Start: 28 @27518 has 24 MA's), (Start: 29 @27515 has 53 MA's), (Start: 33 @27491 has 1 MA's), (Start: 35 @27485 has 2 MA's), (42, 27383), (45, 27365), (69, 27266),

Gene: SweetiePie_40 Start: 28800, Stop: 28534, Start Num: 26

Candidate Starts for SweetiePie_40:

(9, 29025), (15, 28893), (Start: 26 @28800 has 24 MA's), (Start: 33 @28776 has 1 MA's), (37, 28734), (57, 28593), (68, 28551),

Gene: SwirlSquare_43 Start: 27628, Stop: 27335, Start Num: 24

Candidate Starts for SwirlSquare_43:

(24, 27628), (Start: 33 @27595 has 1 MA's), (Start: 35 @27589 has 2 MA's), (66, 27379), (68, 27373), (73, 27340),

Gene: TarsusIV_39 Start: 28764, Stop: 28468, Start Num: 23

Candidate Starts for TarsusIV_39:

(11, 28965), (17, 28824), (Start: 23 @28764 has 8 MA's), (Start: 33 @28740 has 1 MA's), (Start: 35 @28734 has 2 MA's), (36, 28719), (37, 28698), (46, 28605), (47, 28602), (56, 28575), (66, 28518), (68, 28512), (72, 28491),

Gene: Temprado_43 Start: 27310, Stop: 27011, Start Num: 29

Candidate Starts for Temprado_43:

(Start: 20 @27316 has 1 MA's), (Start: 29 @27310 has 53 MA's), (Start: 33 @27286 has 1 MA's), (Start: 34 @27283 has 4 MA's), (Start: 35 @27280 has 2 MA's), (46, 27151), (55, 27118), (58, 27106), (62, 27076), (72, 27031),

Gene: Terrific_43 Start: 29138, Stop: 28899, Start Num: 34

Candidate Starts for Terrific_43:

(15, 29258), (Start: 26 @29165 has 24 MA's), (Start: 34 @29138 has 4 MA's), (57, 28958), (68, 28916),

Gene: Timothy_40 Start: 28155, Stop: 27868, Start Num: 29

Candidate Starts for Timothy_40:

(16, 28245), (Start: 29 @28155 has 53 MA's), (32, 28140), (Start: 34 @28128 has 4 MA's), (37, 28089), (46, 27996),

Gene: TinyTimmy_40 Start: 28198, Stop: 27911, Start Num: 29

Candidate Starts for TinyTimmy_40:

(16, 28288), (Start: 29 @28198 has 53 MA's), (32, 28183), (Start: 34 @28171 has 4 MA's), (Start: 35 @28168 has 2 MA's), (37, 28132), (45, 28048), (46, 28039),

Gene: TopsytheTRex_38 Start: 28163, Stop: 27870, Start Num: 30

Candidate Starts for TopsytheTRex_38:

(Start: 30 @28163 has 21 MA's), (Start: 33 @28142 has 1 MA's), (46, 28007), (69, 27905), (71, 27890), (72, 27887), (73, 27875),

Gene: Tomathan_43 Start: 28789, Stop: 28505, Start Num: 25

Candidate Starts for Tomathan_43:

(Start: 25 @28789 has 14 MA's), (Start: 34 @28768 has 4 MA's), (Start: 35 @28765 has 2 MA's), (40, 28690), (46, 28639), (63, 28570), (64, 28564), (66, 28558), (68, 28552), (72, 28531),

Gene: ToneTone_39 Start: 27021, Stop: 26719, Start Num: 28

Candidate Starts for ToneTone_39:

(Start: 28 @27021 has 24 MA's), (Start: 33 @26994 has 1 MA's), (Start: 34 @26991 has 4 MA's), (Start: 35 @26988 has 2 MA's), (46, 26859), (55, 26826), (58, 26814), (62, 26784), (72, 26739),

Gene: Travvers_43 Start: 28789, Stop: 28505, Start Num: 25

Candidate Starts for Travvers_43:

(Start: 25 @28789 has 14 MA's), (Start: 34 @28768 has 4 MA's), (Start: 35 @28765 has 2 MA's), (40, 28690), (46, 28639), (64, 28564), (66, 28558), (72, 28531),

Gene: Trixie_41 Start: 29551, Stop: 29252, Start Num: 21

Candidate Starts for Trixie_41:

(Start: 21 @29551 has 1 MA's), (Start: 33 @29521 has 1 MA's), (Start: 35 @29515 has 2 MA's), (62, 29323),

Gene: Trooper_41 Start: 29038, Stop: 28709, Start Num: 29

Candidate Starts for Trooper_41:

(10, 29239), (Start: 29 @29038 has 53 MA's), (Start: 33 @29014 has 1 MA's), (Start: 35 @29008 has 2 MA's), (36, 28993), (46, 28879),

Gene: Tucker_43 Start: 27459, Stop: 27157, Start Num: 28

Candidate Starts for Tucker_43:

(Start: 28 @27459 has 24 MA's), (Start: 33 @27432 has 1 MA's), (Start: 34 @27429 has 4 MA's), (Start: 35 @27426 has 2 MA's), (46, 27297), (55, 27264), (58, 27252), (69, 27195), (72, 27177),

Gene: Turbido_41 Start: 29165, Stop: 28902, Start Num: 30

Candidate Starts for Turbido_41:

(Start: 30 @29165 has 21 MA's), (Start: 34 @29141 has 4 MA's), (57, 28961), (68, 28919),

Gene: Updawg_41 Start: 29147, Stop: 28887, Start Num: 30

Candidate Starts for Updawg_41:

(Start: 30 @29147 has 21 MA's), (Start: 34 @29126 has 4 MA's), (57, 28946), (68, 28904),

Gene: VA6_40 Start: 28900, Stop: 28616, Start Num: 25

Candidate Starts for VA6_40:

(Start: 25 @28900 has 14 MA's), (Start: 34 @28879 has 4 MA's), (Start: 35 @28876 has 2 MA's), (40, 28801), (46, 28750), (63, 28681), (64, 28675), (66, 28669), (72, 28642),

Gene: VC3_43 Start: 28888, Stop: 28604, Start Num: 25

Candidate Starts for VC3_43:

(Start: 25 @28888 has 14 MA's), (Start: 34 @28867 has 4 MA's), (Start: 35 @28864 has 2 MA's), (40, 28789), (46, 28738), (63, 28669), (64, 28663), (66, 28657), (72, 28630),

Gene: VohminGhazi_42 Start: 27292, Stop: 26993, Start Num: 29

Candidate Starts for VohminGhazi_42:

(Start: 28 @27295 has 24 MA's), (Start: 29 @27292 has 53 MA's), (Start: 33 @27268 has 1 MA's), (Start: 34 @27265 has 4 MA's), (Start: 35 @27262 has 2 MA's), (46, 27133), (55, 27100), (58, 27088), (72, 27013),

Gene: WeiHuaDA_45 Start: 30434, Stop: 30141, Start Num: 23

Candidate Starts for WeiHuaDA_45:

(Start: 21 @30440 has 1 MA's), (Start: 23 @30434 has 8 MA's), (Start: 33 @30410 has 1 MA's), (Start: 34 @30407 has 4 MA's), (41, 30311), (45, 30284), (66, 30194),

Gene: Whabigail7_41 Start: 29153, Stop: 28890, Start Num: 30

Candidate Starts for Whabigail7_41:

(Start: 30 @29153 has 21 MA's), (Start: 34 @29129 has 4 MA's), (57, 28949), (68, 28907),

Gene: WideWale_41 Start: 29147, Stop: 28887, Start Num: 30

Candidate Starts for WideWale_41:

(Start: 30 @29147 has 21 MA's), (Start: 34 @29126 has 4 MA's), (57, 28946), (68, 28904),

Gene: Wiks_41 Start: 27089, Stop: 26787, Start Num: 28

Candidate Starts for Wiks_41:

(Start: 28 @27089 has 24 MA's), (Start: 33 @27062 has 1 MA's), (Start: 34 @27059 has 4 MA's), (Start: 35 @27056 has 2 MA's), (46, 26927), (55, 26894), (58, 26882), (69, 26825), (72, 26807),

Gene: WunderPhul_42 Start: 27087, Stop: 26785, Start Num: 28

Candidate Starts for WunderPhul_42:

(Start: 28 @27087 has 24 MA's), (Start: 33 @27060 has 1 MA's), (Start: 34 @27057 has 4 MA's), (Start: 35 @27054 has 2 MA's), (46, 26925), (55, 26892), (58, 26880), (62, 26850), (72, 26805),

Gene: XianYue_40 Start: 28803, Stop: 28477, Start Num: 23

Candidate Starts for XianYue_40:

(Start: 23 @28803 has 8 MA's), (Start: 33 @28779 has 1 MA's), (Start: 35 @28773 has 2 MA's), (50, 28608), (52, 28605), (72, 28494),

Gene: Yokurt_42 Start: 27089, Stop: 26787, Start Num: 28

Candidate Starts for Yokurt_42:

(Start: 28 @27089 has 24 MA's), (Start: 33 @27062 has 1 MA's), (Start: 34 @27059 has 4 MA's), (Start: 35 @27056 has 2 MA's), (46, 26927), (55, 26894), (58, 26882), (62, 26852), (72, 26807),

Gene: Zaka_42 Start: 27089, Stop: 26787, Start Num: 28

Candidate Starts for Zaka_42:

(Start: 28 @27089 has 24 MA's), (Start: 33 @27062 has 1 MA's), (Start: 34 @27059 has 4 MA's),
(Start: 35 @27056 has 2 MA's), (46, 26927), (55, 26894), (58, 26882), (62, 26852), (72, 26807),

Gene: Zulu_43 Start: 27440, Stop: 27138, Start Num: 28

Candidate Starts for Zulu_43:

(Start: 28 @27440 has 24 MA's), (Start: 33 @27413 has 1 MA's), (Start: 34 @27410 has 4 MA's),
(Start: 35 @27407 has 2 MA's), (46, 27278), (55, 27245), (58, 27233), (62, 27203), (72, 27158),