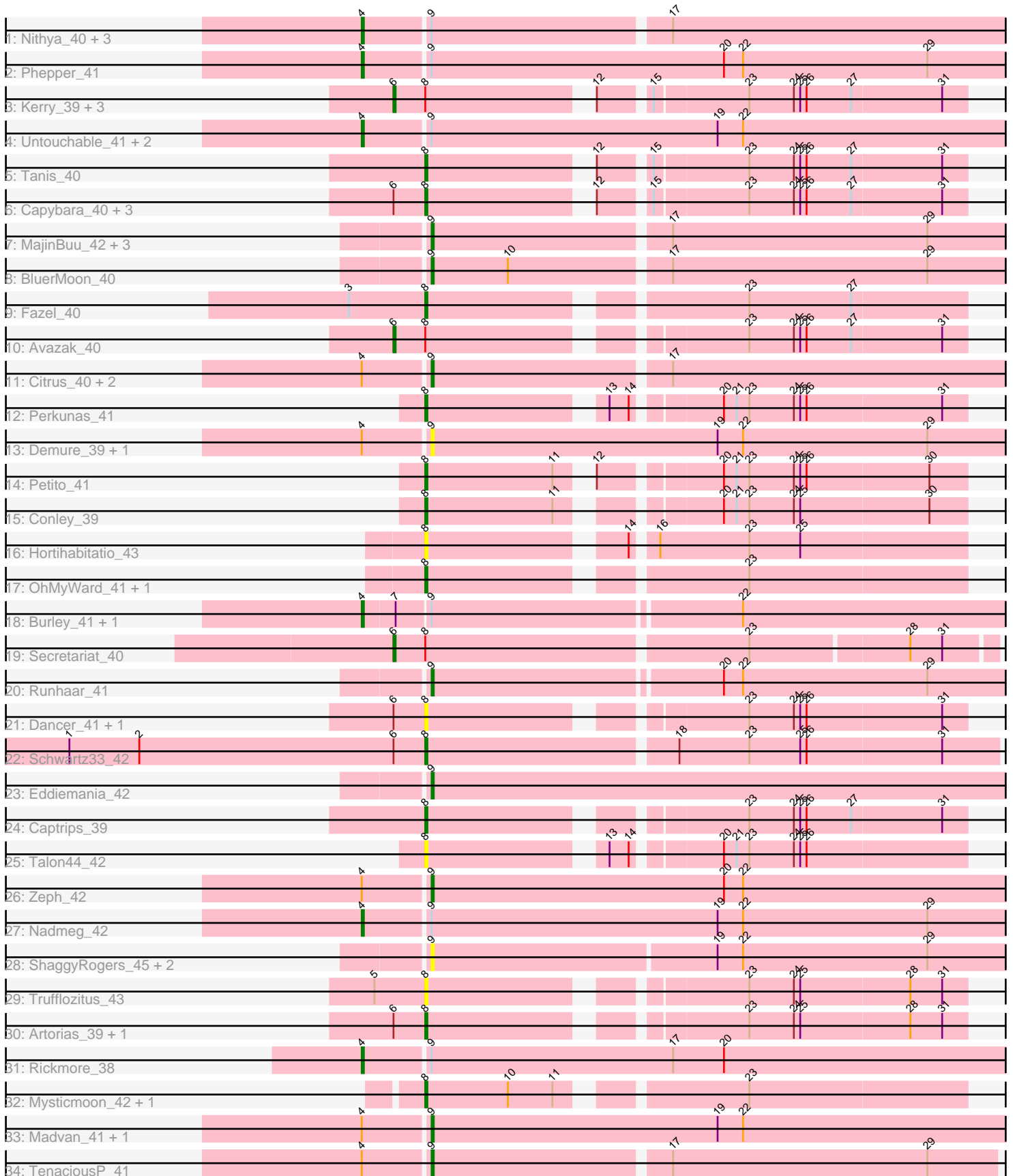


Pham 217971



Note: Tracks are now grouped by subcluster and scaled. Switching in subcluster is indicated by changes in track color. Track scale is now set by default to display the region 30 bp upstream of start 1 to 30 bp downstream of the last possible start. If this default region is judged to be packed too tightly with annotated starts, the track will be further scaled to only show that region of the ORF with annotated starts. This action will be indicated by adding "Zoomed" to the title. For starts, yellow indicates the location of called starts comprised solely of Glimmer/GeneMark auto-annotations, green indicates the location of called starts with at least 1 manual gene annotation.

Pham 217971 Report

This analysis was run 03/28/25 on database version 593.

Pham number 217971 has 59 members, 14 are drafts.

Phages represented in each track:

- Track 1 : Nithya_40, AlainaMarie_40, Aflac_40, Chikenjars_40
- Track 2 : Phepper_41
- Track 3 : Kerry_39, Magel_41, Gravy_39, Odesza_39
- Track 4 : Untouchable_41, Kenosha_41, Crocheter_41
- Track 5 : Tanis_40
- Track 6 : Copybara_40, Roney_40, Gill_40, NoPickles_39
- Track 7 : MajinBuu_42, Figliar_41, Jodelie19_42, OlgasClover_41
- Track 8 : BluerMoon_40
- Track 9 : Fazel_40
- Track 10 : Avazak_40
- Track 11 : Citrus_40, Duffington_39, EndAve_41
- Track 12 : Perkunas_41
- Track 13 : Demure_39, Arataki_38
- Track 14 : Petite_41
- Track 15 : Conley_39
- Track 16 : Hortihabitatio_43
- Track 17 : OhMyWard_41, Mossy_43
- Track 18 : Burley_41, Vardy_41
- Track 19 : Secretariat_40
- Track 20 : Runhaar_41
- Track 21 : Dancer_41, JulesRay_41
- Track 22 : Schwartz33_42
- Track 23 : Eddiemania_42
- Track 24 : Captrips_39
- Track 25 : Talon44_42
- Track 26 : Zeph_42
- Track 27 : Nadmeg_42
- Track 28 : ShaggyRogers_45, Gusicorn_44, BetterYeti_43
- Track 29 : Trufflozitus_43
- Track 30 : Artorias_39, FortCran_39
- Track 31 : Rickmore_38
- Track 32 : Mysticmoon_42, Pherobrine_42
- Track 33 : Madvan_41, Hydrus_42
- Track 34 : TenaciousP_41

Summary of Final Annotations (See graph section above for start numbers):

The start number called the most often in the published annotations is 8, it was called in 15 of the 45 non-draft genes in the pham.

Genes that call this "Most Annotated" start:

- Artorias_39, Captrips_39, Copybara_40, Conley_39, Dancer_41, Fazel_40, FortCran_39, Gill_40, Hortihabitatio_43, JulesRay_41, Mossy_43, Mysticmoon_42, NoPickles_39, OhMyWard_41, Perkunas_41, Petite_41, Pherobrine_42, Roney_40, Schwartz33_42, Talon44_42, Tanis_40, Trufflozitus_43,

Genes that have the "Most Annotated" start but do not call it:

- Avazak_40, Gravy_39, Kerry_39, Magel_41, Odesza_39, Secretariat_40,

Genes that do not have the "Most Annotated" start:

- Aflac_40, AlainaMarie_40, Arataki_38, BetterYeti_43, BluerMoon_40, Burley_41, Chikenjars_40, Citrus_40, Crocheter_41, Demure_39, Duffington_39, Eddiemania_42, EndAve_41, Figliar_41, Gusicorn_44, Hydrus_42, Jodelie19_42, Kenosha_41, Madvan_41, MajinBuu_42, Nadmeg_42, Nithya_40, OlgasClover_41, Phepper_41, Rickmore_38, Runhaar_41, ShaggyRogers_45, TenaciousP_41, Untouchable_41, Vardy_41, Zeph_42,

Summary by start number:

Start 4:

- Found in 21 of 59 (35.6%) of genes in pham
- Manual Annotations of this start: 12 of 45
- Called 57.1% of time when present
- Phage (with cluster) where this start called: Aflac_40 (DJ), AlainaMarie_40 (DJ), Burley_41 (DJ), Chikenjars_40 (DJ), Crocheter_41 (DJ), Kenosha_41 (DJ), Nadmeg_42 (DJ), Nithya_40 (DJ), Phepper_41 (DJ), Rickmore_38 (DJ), Untouchable_41 (DJ), Vardy_41 (DJ),

Start 6:

- Found in 15 of 59 (25.4%) of genes in pham
- Manual Annotations of this start: 6 of 45
- Called 40.0% of time when present
- Phage (with cluster) where this start called: Avazak_40 (DJ), Gravy_39 (DJ), Kerry_39 (DJ), Magel_41 (DJ), Odesza_39 (DJ), Secretariat_40 (DJ),

Start 8:

- Found in 28 of 59 (47.5%) of genes in pham
- Manual Annotations of this start: 15 of 45
- Called 78.6% of time when present
- Phage (with cluster) where this start called: Artorias_39 (DJ), Captrips_39 (DJ), Copybara_40 (DJ), Conley_39 (DJ), Dancer_41 (DJ), Fazel_40 (DJ), FortCran_39 (DJ), Gill_40 (DJ), Hortihabitatio_43 (DJ), JulesRay_41 (DJ), Mossy_43 (DJ), Mysticmoon_42 (DJ), NoPickles_39 (DJ), OhMyWard_41 (DJ), Perkunas_41 (DJ), Petite_41 (DJ), Pherobrine_42 (DJ), Roney_40 (DJ), Schwartz33_42 (DJ), Talon44_42 (DJ), Tanis_40 (DJ), Trufflozitus_43 (DJ),

Start 9:

- Found in 31 of 59 (52.5%) of genes in pham
- Manual Annotations of this start: 12 of 45
- Called 61.3% of time when present
- Phage (with cluster) where this start called: Arataki_38 (DJ), BetterYeti_43 (DJ), BluerMoon_40 (DJ), Citrus_40 (DJ), Demure_39 (DJ), Duffington_39 (DJ), Eddiemania_42 (DJ), EndAve_41 (DJ), Figliar_41 (DJ), Gusicorn_44 (DJ), Hydrus_42 (DJ), Jodelie19_42 (DJ), Madvan_41 (DJ), MajinBuu_42 (DJ), OlgasClover_41 (DJ), Runhaar_41 (DJ), ShaggyRogers_45 (DJ), TenaciousP_41 (DJ), Zeph_42 (DJ),

Summary by clusters:

There is one cluster represented in this pham: DJ

Info for manual annotations of cluster DJ:

- Start number 4 was manually annotated 12 times for cluster DJ.
- Start number 6 was manually annotated 6 times for cluster DJ.
- Start number 8 was manually annotated 15 times for cluster DJ.
- Start number 9 was manually annotated 12 times for cluster DJ.

Gene Information:

Gene: Aflac_40 Start: 32891, Stop: 33190, Start Num: 4

Candidate Starts for Aflac_40:

(Start: 4 @32891 has 12 MA's), (Start: 9 @32921 has 12 MA's), (17, 33029),

Gene: AlainaMarie_40 Start: 32870, Stop: 33169, Start Num: 4

Candidate Starts for AlainaMarie_40:

(Start: 4 @32870 has 12 MA's), (Start: 9 @32900 has 12 MA's), (17, 33008),

Gene: Arataki_38 Start: 32260, Stop: 32535, Start Num: 9

Candidate Starts for Arataki_38:

(Start: 4 @32230 has 12 MA's), (Start: 9 @32260 has 12 MA's), (19, 32395), (22, 32407), (29, 32494),

Gene: Artorias_39 Start: 30605, Stop: 30838, Start Num: 8

Candidate Starts for Artorias_39:

(Start: 6 @30590 has 6 MA's), (Start: 8 @30605 has 15 MA's), (23, 30737), (24, 30758), (25, 30761), (28, 30812), (31, 30827),

Gene: Avazak_40 Start: 30958, Stop: 31206, Start Num: 6

Candidate Starts for Avazak_40:

(Start: 6 @30958 has 6 MA's), (Start: 8 @30973 has 15 MA's), (23, 31105), (24, 31126), (25, 31129), (26, 31132), (27, 31153), (31, 31195),

Gene: BetterYeti_43 Start: 32965, Stop: 33237, Start Num: 9

Candidate Starts for BetterYeti_43:

(Start: 9 @32965 has 12 MA's), (19, 33097), (22, 33109), (29, 33196),

Gene: BluerMoon_40 Start: 32917, Stop: 33186, Start Num: 9

Candidate Starts for BluerMoon_40:

(Start: 9 @32917 has 12 MA's), (10, 32953), (17, 33025), (29, 33145),

Gene: Burley_41 Start: 32894, Stop: 33193, Start Num: 4

Candidate Starts for Burley_41:

(Start: 4 @32894 has 12 MA's), (7, 32909), (Start: 9 @32924 has 12 MA's), (22, 33065),

Gene: Captrips_39 Start: 30645, Stop: 30878, Start Num: 8

Candidate Starts for Captrips_39:

(Start: 8 @30645 has 15 MA's), (23, 30777), (24, 30798), (25, 30801), (26, 30804), (27, 30825), (31, 30867),

Gene: Capybara_40 Start: 31035, Stop: 31268, Start Num: 8

Candidate Starts for Capybara_40:

(Start: 6 @31020 has 6 MA's), (Start: 8 @31035 has 15 MA's), (12, 31104), (15, 31125), (23, 31167), (24, 31188), (25, 31191), (26, 31194), (27, 31215), (31, 31257),

Gene: Chikenjars_40 Start: 32881, Stop: 33180, Start Num: 4

Candidate Starts for Chikenjars_40:

(Start: 4 @32881 has 12 MA's), (Start: 9 @32911 has 12 MA's), (17, 33019),

Gene: Citrus_40 Start: 33187, Stop: 33456, Start Num: 9

Candidate Starts for Citrus_40:

(Start: 4 @33157 has 12 MA's), (Start: 9 @33187 has 12 MA's), (17, 33295),

Gene: Conley_39 Start: 31573, Stop: 31806, Start Num: 8

Candidate Starts for Conley_39:

(Start: 8 @31573 has 15 MA's), (11, 31633), (20, 31693), (21, 31699), (23, 31705), (24, 31726), (25, 31729), (30, 31789),

Gene: Crocheter_41 Start: 33288, Stop: 33593, Start Num: 4

Candidate Starts for Crocheter_41:

(Start: 4 @33288 has 12 MA's), (Start: 9 @33318 has 12 MA's), (19, 33453), (22, 33465),

Gene: Dancer_41 Start: 30345, Stop: 30578, Start Num: 8

Candidate Starts for Dancer_41:

(Start: 6 @30330 has 6 MA's), (Start: 8 @30345 has 15 MA's), (23, 30477), (24, 30498), (25, 30501), (26, 30504), (31, 30567),

Gene: Demure_39 Start: 32260, Stop: 32535, Start Num: 9

Candidate Starts for Demure_39:

(Start: 4 @32230 has 12 MA's), (Start: 9 @32260 has 12 MA's), (19, 32395), (22, 32407), (29, 32494),

Gene: Duffington_39 Start: 32573, Stop: 32842, Start Num: 9

Candidate Starts for Duffington_39:

(Start: 4 @32543 has 12 MA's), (Start: 9 @32573 has 12 MA's), (17, 32681),

Gene: Eddiemania_42 Start: 33826, Stop: 34101, Start Num: 9

Candidate Starts for Eddiemania_42:

(Start: 9 @33826 has 12 MA's),

Gene: EndAve_41 Start: 33080, Stop: 33349, Start Num: 9

Candidate Starts for EndAve_41:

(Start: 4 @33050 has 12 MA's), (Start: 9 @33080 has 12 MA's), (17, 33188),

Gene: Fazel_40 Start: 32562, Stop: 32798, Start Num: 8

Candidate Starts for Fazel_40:

(3, 32526), (Start: 8 @32562 has 15 MA's), (23, 32697), (27, 32745),

Gene: Figliar_41 Start: 33226, Stop: 33495, Start Num: 9

Candidate Starts for Figliar_41:

(Start: 9 @33226 has 12 MA's), (17, 33334), (29, 33454),

Gene: FortCran_39 Start: 30605, Stop: 30838, Start Num: 8

Candidate Starts for FortCran_39:

(Start: 6 @30590 has 6 MA's), (Start: 8 @30605 has 15 MA's), (23, 30737), (24, 30758), (25, 30761), (28, 30812), (31, 30827),

Gene: Gill_40 Start: 31052, Stop: 31285, Start Num: 8

Candidate Starts for Gill_40:

(Start: 6 @31037 has 6 MA's), (Start: 8 @31052 has 15 MA's), (12, 31121), (15, 31142), (23, 31184), (24, 31205), (25, 31208), (26, 31211), (27, 31232), (31, 31274),

Gene: Gravy_39 Start: 30710, Stop: 30958, Start Num: 6

Candidate Starts for Gravy_39:

(Start: 6 @30710 has 6 MA's), (Start: 8 @30725 has 15 MA's), (12, 30794), (15, 30815), (23, 30857), (24, 30878), (25, 30881), (26, 30884), (27, 30905), (31, 30947),

Gene: Gusicorn_44 Start: 32966, Stop: 33238, Start Num: 9

Candidate Starts for Gusicorn_44:

(Start: 9 @32966 has 12 MA's), (19, 33098), (22, 33110), (29, 33197),

Gene: Hortihabitatio_43 Start: 33009, Stop: 33245, Start Num: 8

Candidate Starts for Hortihabitatio_43:

(Start: 8 @33009 has 15 MA's), (14, 33093), (16, 33102), (23, 33144), (25, 33168),

Gene: Hydrus_42 Start: 33836, Stop: 34111, Start Num: 9

Candidate Starts for Hydrus_42:

(Start: 4 @33806 has 12 MA's), (Start: 9 @33836 has 12 MA's), (19, 33971), (22, 33983),

Gene: Jodelie19_42 Start: 34681, Stop: 34950, Start Num: 9

Candidate Starts for Jodelie19_42:

(Start: 9 @34681 has 12 MA's), (17, 34789), (29, 34909),

Gene: JulesRay_41 Start: 30639, Stop: 30872, Start Num: 8

Candidate Starts for JulesRay_41:

(Start: 6 @30624 has 6 MA's), (Start: 8 @30639 has 15 MA's), (23, 30771), (24, 30792), (25, 30795), (26, 30798), (31, 30861),

Gene: Kenosha_41 Start: 33698, Stop: 34003, Start Num: 4

Candidate Starts for Kenosha_41:

(Start: 4 @33698 has 12 MA's), (Start: 9 @33728 has 12 MA's), (19, 33863), (22, 33875),

Gene: Kerry_39 Start: 30710, Stop: 30958, Start Num: 6

Candidate Starts for Kerry_39:

(Start: 6 @30710 has 6 MA's), (Start: 8 @30725 has 15 MA's), (12, 30794), (15, 30815), (23, 30857), (24, 30878), (25, 30881), (26, 30884), (27, 30905), (31, 30947),

Gene: Madvan_41 Start: 32959, Stop: 33234, Start Num: 9

Candidate Starts for Madvan_41:

(Start: 4 @32929 has 12 MA's), (Start: 9 @32959 has 12 MA's), (19, 33094), (22, 33106),

Gene: Magel_41 Start: 30941, Stop: 31189, Start Num: 6

Candidate Starts for Magel_41:

(Start: 6 @30941 has 6 MA's), (Start: 8 @30956 has 15 MA's), (12, 31025), (15, 31046), (23, 31088), (24, 31109), (25, 31112), (26, 31115), (27, 31136), (31, 31178),

Gene: MajinBuu_42 Start: 33253, Stop: 33522, Start Num: 9

Candidate Starts for MajinBuu_42:

(Start: 9 @33253 has 12 MA's), (17, 33361), (29, 33481),

Gene: Mossy_43 Start: 34779, Stop: 35015, Start Num: 8

Candidate Starts for Mossy_43:

(Start: 8 @34779 has 15 MA's), (23, 34914),

Gene: Mysticmoon_42 Start: 33303, Stop: 33539, Start Num: 8

Candidate Starts for Mysticmoon_42:

(Start: 8 @33303 has 15 MA's), (10, 33342), (11, 33363), (23, 33438),

Gene: Nadmeg_42 Start: 34361, Stop: 34666, Start Num: 4

Candidate Starts for Nadmeg_42:

(Start: 4 @34361 has 12 MA's), (Start: 9 @34391 has 12 MA's), (19, 34526), (22, 34538), (29, 34625),

Gene: Nithya_40 Start: 32871, Stop: 33170, Start Num: 4

Candidate Starts for Nithya_40:

(Start: 4 @32871 has 12 MA's), (Start: 9 @32901 has 12 MA's), (17, 33009),

Gene: NoPickles_39 Start: 30357, Stop: 30590, Start Num: 8

Candidate Starts for NoPickles_39:

(Start: 6 @30342 has 6 MA's), (Start: 8 @30357 has 15 MA's), (12, 30426), (15, 30447), (23, 30489), (24, 30510), (25, 30513), (26, 30516), (27, 30537), (31, 30579),

Gene: Odesza_39 Start: 30711, Stop: 30959, Start Num: 6

Candidate Starts for Odesza_39:

(Start: 6 @30711 has 6 MA's), (Start: 8 @30726 has 15 MA's), (12, 30795), (15, 30816), (23, 30858), (24, 30879), (25, 30882), (26, 30885), (27, 30906), (31, 30948),

Gene: OhMyWard_41 Start: 34121, Stop: 34357, Start Num: 8

Candidate Starts for OhMyWard_41:

(Start: 8 @34121 has 15 MA's), (23, 34256),

Gene: OlgasClover_41 Start: 33965, Stop: 34234, Start Num: 9

Candidate Starts for OlgasClover_41:

(Start: 9 @33965 has 12 MA's), (17, 34073), (29, 34193),

Gene: Perkunas_41 Start: 31004, Stop: 31237, Start Num: 8

Candidate Starts for Perkunas_41:

(Start: 8 @31004 has 15 MA's), (13, 31079), (14, 31088), (20, 31124), (21, 31130), (23, 31136), (24, 31157), (25, 31160), (26, 31163), (31, 31226),

Gene: Petite_41 Start: 32107, Stop: 32340, Start Num: 8

Candidate Starts for Petite_41:

(Start: 8 @32107 has 15 MA's), (11, 32167), (12, 32176), (20, 32227), (21, 32233), (23, 32239), (24, 32260), (25, 32263), (26, 32266), (30, 32323),

Gene: Phepper_41 Start: 32928, Stop: 33233, Start Num: 4

Candidate Starts for Phepper_41:

(Start: 4 @32928 has 12 MA's), (Start: 9 @32958 has 12 MA's), (20, 33096), (22, 33105), (29, 33192),

Gene: Pherobrine_42 Start: 33604, Stop: 33840, Start Num: 8

Candidate Starts for Pherobrine_42:

(Start: 8 @33604 has 15 MA's), (10, 33643), (11, 33664), (23, 33739),

Gene: Rickmore_38 Start: 30983, Stop: 31288, Start Num: 4

Candidate Starts for Rickmore_38:

(Start: 4 @30983 has 12 MA's), (Start: 9 @31013 has 12 MA's), (17, 31127), (20, 31151),

Gene: Roney_40 Start: 31047, Stop: 31280, Start Num: 8

Candidate Starts for Roney_40:

(Start: 6 @31032 has 6 MA's), (Start: 8 @31047 has 15 MA's), (12, 31116), (15, 31137), (23, 31179), (24, 31200), (25, 31203), (26, 31206), (27, 31227), (31, 31269),

Gene: Runhaar_41 Start: 32958, Stop: 33227, Start Num: 9

Candidate Starts for Runhaar_41:

(Start: 9 @32958 has 12 MA's), (20, 33090), (22, 33099), (29, 33186),

Gene: Schwartz33_42 Start: 33399, Stop: 33662, Start Num: 8

Candidate Starts for Schwartz33_42:

(1, 33231), (2, 33264), (Start: 6 @33384 has 6 MA's), (Start: 8 @33399 has 15 MA's), (18, 33513), (23, 33546), (25, 33570), (26, 33573), (31, 33636),

Gene: Secretariat_40 Start: 32327, Stop: 32599, Start Num: 6

Candidate Starts for Secretariat_40:

(Start: 6 @32327 has 6 MA's), (Start: 8 @32342 has 15 MA's), (23, 32489), (28, 32561), (31, 32576),

Gene: ShaggyRogers_45 Start: 32964, Stop: 33236, Start Num: 9

Candidate Starts for ShaggyRogers_45:

(Start: 9 @32964 has 12 MA's), (19, 33096), (22, 33108), (29, 33195),

Gene: Talon44_42 Start: 31019, Stop: 31252, Start Num: 8

Candidate Starts for Talon44_42:

(Start: 8 @31019 has 15 MA's), (13, 31094), (14, 31103), (20, 31139), (21, 31145), (23, 31151), (24, 31172), (25, 31175), (26, 31178),

Gene: Tanis_40 Start: 30898, Stop: 31131, Start Num: 8

Candidate Starts for Tanis_40:

(Start: 8 @30898 has 15 MA's), (12, 30967), (15, 30988), (23, 31030), (24, 31051), (25, 31054), (26, 31057), (27, 31078), (31, 31120),

Gene: TenaciousP_41 Start: 34346, Stop: 34606, Start Num: 9

Candidate Starts for TenaciousP_41:

(Start: 4 @34316 has 12 MA's), (Start: 9 @34346 has 12 MA's), (17, 34454), (29, 34574),

Gene: Trufflozitus_43 Start: 30996, Stop: 31229, Start Num: 8

Candidate Starts for Trufflozitus_43:

(5, 30972), (Start: 8 @30996 has 15 MA's), (23, 31128), (24, 31149), (25, 31152), (28, 31203), (31, 31218),

Gene: Untouchable_41 Start: 33288, Stop: 33593, Start Num: 4

Candidate Starts for Untouchable_41:

(Start: 4 @33288 has 12 MA's), (Start: 9 @33318 has 12 MA's), (19, 33453), (22, 33465),

Gene: Vardy_41 Start: 32895, Stop: 33194, Start Num: 4

Candidate Starts for Vardy_41:

(Start: 4 @32895 has 12 MA's), (7, 32910), (Start: 9 @32925 has 12 MA's), (22, 33066),

Gene: Zeph_42 Start: 33816, Stop: 34091, Start Num: 9

Candidate Starts for Zeph_42:

(Start: 4 @33786 has 12 MA's), (Start: 9 @33816 has 12 MA's), (20, 33954), (22, 33963),