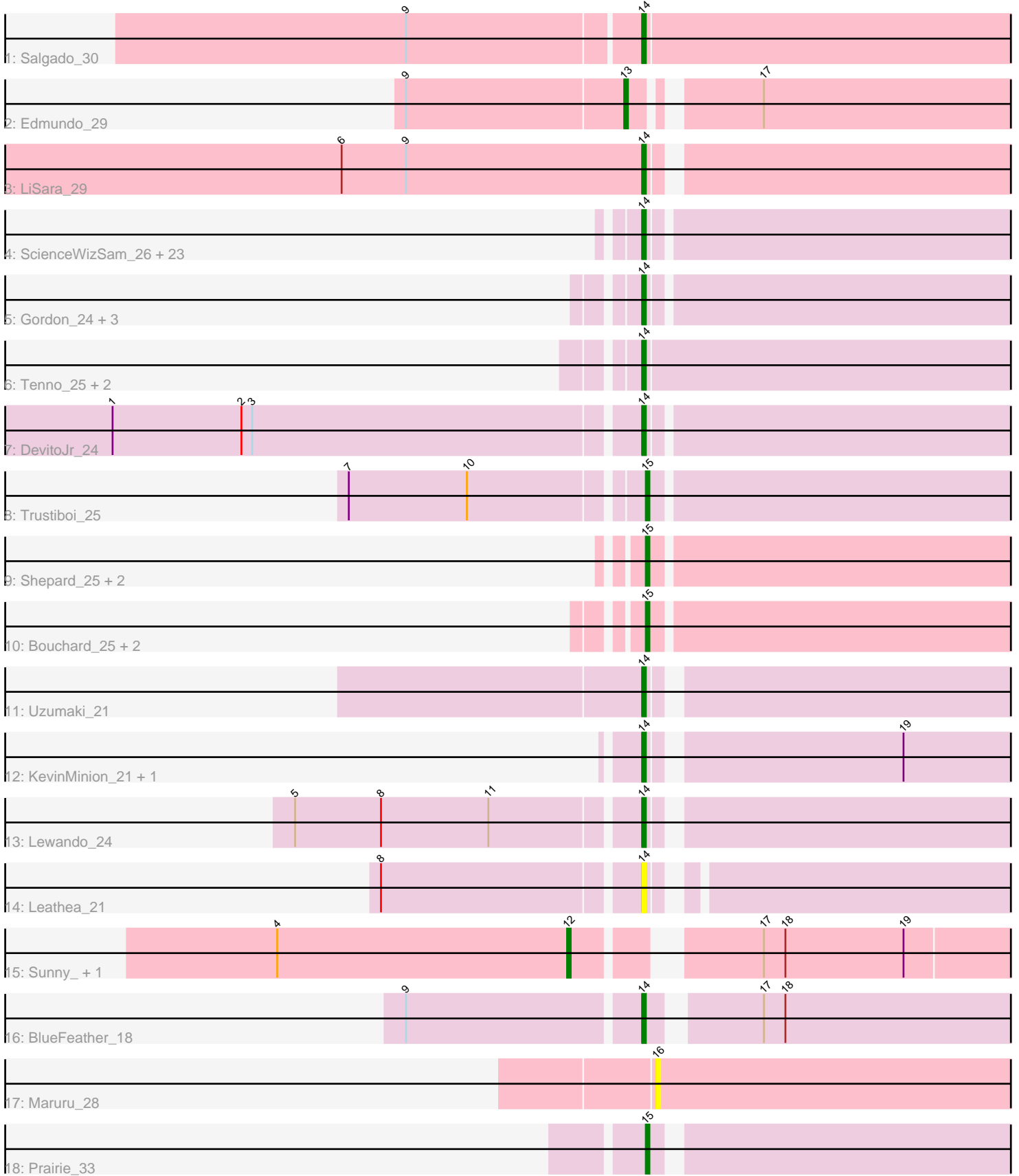


Pham 218020



Note: Tracks are now grouped by subcluster and scaled. Switching in subcluster is indicated by changes in track color. Track scale is now set by default to display the region 30 bp upstream of start 1 to 30 bp downstream of the last possible start. If this default region is judged to be packed too tightly with annotated starts, the track will be further scaled to only show that region of the ORF with annotated starts. This action will be indicated by adding "Zoomed" to the title. For starts, yellow indicates the location of called starts comprised solely of Glimmer/GeneMark auto-annotations, green indicates the location of called starts with at least 1 manual gene annotation.

Pham 218020 Report

This analysis was run 03/28/25 on database version 593.

Pham number 218020 has 52 members, 18 are drafts.

Phages represented in each track:

- Track 1 : Salgado_30
- Track 2 : Edmundo_29
- Track 3 : LiSara_29
- Track 4 : ScienceWizSam_26, Navi1117_22, Niktson_24, AreFloNak_24, ElephantMan_24, Brunswick_24, Kinny_24, TrixiePhattel_21, BarbieDoll_24, Nivinsha_24, Breylor17_25, Biscute_25, Argan_20, Tatanka_24, Acai_24, Issa_24, Renaldo_26, Darby_24, Teacup_24, Phaila_20, Zeina_21, Synepsis_23, LucySwiss_24, Tenney120_22
- Track 5 : Gordon_24, CastorTray_26, Inked_26, Nightmare_25
- Track 6 : Tenno_25, MiniBagel_24, CapnMurica_24
- Track 7 : DevitoJr_24
- Track 8 : Trustiboi_25
- Track 9 : Shepard_25, LilHuddy_25, Phaby_25
- Track 10 : Bouchard_25, Chlochlo_25, Tokki_25
- Track 11 : Uzumaki_21
- Track 12 : KevinMinion_21, GantcherGoblin_20
- Track 13 : Lewando_24
- Track 14 : Leathea_21
- Track 15 : Sunny_, Merry_
- Track 16 : BlueFeather_18
- Track 17 : Maruru_28
- Track 18 : Prairie_33

Summary of Final Annotations (See graph section above for start numbers):

The start number called the most often in the published annotations is 14, it was called in 25 of the 34 non-draft genes in the pham.

Genes that call this "Most Annotated" start:

- Acai_24, AreFloNak_24, Argan_20, BarbieDoll_24, Biscute_25, BlueFeather_18, Breylor17_25, Brunswick_24, CapnMurica_24, CastorTray_26, Darby_24, DevitoJr_24, ElephantMan_24, GantcherGoblin_20, Gordon_24, Inked_26, Issa_24, KevinMinion_21, Kinny_24, Leathea_21, Lewando_24, LiSara_29, LucySwiss_24, MiniBagel_24, Navi1117_22, Nightmare_25, Niktson_24, Nivinsha_24, Phaila_20,

Renaldo_26, Salgado_30, ScienceWizSam_26, Synepsis_23, Tatanka_24, Teacup_24, Tenney120_22, Tenno_25, TrixiePhattel_21, Uzumaki_21, Zeina_21,

Genes that have the "Most Annotated" start but do not call it:

-

Genes that do not have the "Most Annotated" start:

• Bouchard_25, Chlochlo_25, Edmundo_29, LilHuddy_25, Maruru_28, Merry_, Phaby_25, Prairie_33, Shepard_25, Sunny_, Tokki_25, Trustiboi_25,

Summary by start number:

Start 12:

- Found in 2 of 52 (3.8%) of genes in pham
- Manual Annotations of this start: 2 of 34
- Called 100.0% of time when present
- Phage (with cluster) where this start called: Merry_ (EC), Sunny_ (EC),

Start 13:

- Found in 1 of 52 (1.9%) of genes in pham
- Manual Annotations of this start: 1 of 34
- Called 100.0% of time when present
- Phage (with cluster) where this start called: Edmundo_29 (AL),

Start 14:

- Found in 40 of 52 (76.9%) of genes in pham
- Manual Annotations of this start: 25 of 34
- Called 100.0% of time when present
- Phage (with cluster) where this start called: Acai_24 (AU1), AreFloNak_24 (AU1), Argan_20 (AU6), BarbieDoll_24 (AU6), Biscute_25 (AU6), BlueFeather_18 (FE), Breylor17_25 (AU1), Brunswick_24 (AU1), CapnMurica_24 (AU1), CastorTray_26 (AU1), Darby_24 (AU1), DevitoJr_24 (AU1), ElephantMan_24 (AU1), GantcherGoblin_20 (AU6), Gordon_24 (AU1), Inked_26 (AU), Issa_24 (AU1), KevinMinion_21 (AU6), Kinny_24 (AU6), Leathea_21 (AU6), Lewando_24 (AU6), LiSara_29 (AL), LucySwiss_24 (AU1), MiniBagel_24 (AU1), Navi1117_22 (AU6), Nightmare_25 (AU1), Niktson_24 (AU1), Nivinsha_24 (AU1), Phaila_20 (AU6), Renaldo_26 (AU6), Salgado_30 (AL), ScienceWizSam_26 (AU1), Synepsis_23 (AU1), Tatanka_24 (AU1), Teacup_24 (AU1), Tenney120_22 (AU6), Tenno_25 (AU1), TrixiePhattel_21 (AU6), Uzumaki_21 (AU6), Zeina_21 (AU6),

Start 15:

- Found in 8 of 52 (15.4%) of genes in pham
- Manual Annotations of this start: 6 of 34
- Called 100.0% of time when present
- Phage (with cluster) where this start called: Bouchard_25 (AU2), Chlochlo_25 (AU2), LilHuddy_25 (AU2), Phaby_25 (AU2), Prairie_33 (FH), Shepard_25 (AU2), Tokki_25 (AU2), Trustiboi_25 (AU1),

Start 16:

- Found in 1 of 52 (1.9%) of genes in pham
- No Manual Annotations of this start.
- Called 100.0% of time when present
- Phage (with cluster) where this start called: Maruru_28 (FG),

Summary by clusters:

There are 9 clusters represented in this pham: FG, AL, EC, AU1, AU2, AU, FE, AU6, FH,

Info for manual annotations of cluster AL:

- Start number 13 was manually annotated 1 time for cluster AL.
- Start number 14 was manually annotated 2 times for cluster AL.

Info for manual annotations of cluster AU:

- Start number 14 was manually annotated 1 time for cluster AU.

Info for manual annotations of cluster AU1:

- Start number 14 was manually annotated 16 times for cluster AU1.
- Start number 15 was manually annotated 1 time for cluster AU1.

Info for manual annotations of cluster AU2:

- Start number 15 was manually annotated 4 times for cluster AU2.

Info for manual annotations of cluster AU6:

- Start number 14 was manually annotated 5 times for cluster AU6.

Info for manual annotations of cluster EC:

- Start number 12 was manually annotated 2 times for cluster EC.

Info for manual annotations of cluster FE:

- Start number 14 was manually annotated 1 time for cluster FE.

Info for manual annotations of cluster FH:

- Start number 15 was manually annotated 1 time for cluster FH.

Gene Information:

Gene: Acai_24 Start: 19576, Stop: 19713, Start Num: 14

Candidate Starts for Acai_24:

(Start: 14 @19576 has 25 MA's),

Gene: AreFloNak_24 Start: 19537, Stop: 19671, Start Num: 14

Candidate Starts for AreFloNak_24:

(Start: 14 @19537 has 25 MA's),

Gene: Argan_20 Start: 16350, Stop: 16481, Start Num: 14

Candidate Starts for Argan_20:

(Start: 14 @16350 has 25 MA's),

Gene: BarbieDoll_24 Start: 18330, Stop: 18461, Start Num: 14

Candidate Starts for BarbieDoll_24:

(Start: 14 @18330 has 25 MA's),

Gene: Biscute_25 Start: 17978, Stop: 18109, Start Num: 14
Candidate Starts for Biscute_25:
(Start: 14 @17978 has 25 MA's),

Gene: BlueFeather_18 Start: 13518, Stop: 13676, Start Num: 14
Candidate Starts for BlueFeather_18:
(9, 13455), (Start: 14 @13518 has 25 MA's), (17, 13545), (18, 13551),

Gene: Bouchard_25 Start: 19716, Stop: 19850, Start Num: 15
Candidate Starts for Bouchard_25:
(Start: 15 @19716 has 6 MA's),

Gene: Breylor17_25 Start: 20143, Stop: 20277, Start Num: 14
Candidate Starts for Breylor17_25:
(Start: 14 @20143 has 25 MA's),

Gene: Brunswick_24 Start: 19606, Stop: 19743, Start Num: 14
Candidate Starts for Brunswick_24:
(Start: 14 @19606 has 25 MA's),

Gene: CapnMurica_24 Start: 20695, Stop: 20832, Start Num: 14
Candidate Starts for CapnMurica_24:
(Start: 14 @20695 has 25 MA's),

Gene: CastorTray_26 Start: 20001, Stop: 20135, Start Num: 14
Candidate Starts for CastorTray_26:
(Start: 14 @20001 has 25 MA's),

Gene: Chlochlo_25 Start: 19746, Stop: 19880, Start Num: 15
Candidate Starts for Chlochlo_25:
(Start: 15 @19746 has 6 MA's),

Gene: Darby_24 Start: 19447, Stop: 19581, Start Num: 14
Candidate Starts for Darby_24:
(Start: 14 @19447 has 25 MA's),

Gene: DevitoJr_24 Start: 19615, Stop: 19749, Start Num: 14
Candidate Starts for DevitoJr_24:
(1, 19471), (2, 19507), (3, 19510), (Start: 14 @19615 has 25 MA's),

Gene: Edmundo_29 Start: 22991, Stop: 23122, Start Num: 13
Candidate Starts for Edmundo_29:
(9, 22931), (Start: 13 @22991 has 1 MA's), (17, 23021),

Gene: ElephantMan_24 Start: 20146, Stop: 20283, Start Num: 14
Candidate Starts for ElephantMan_24:
(Start: 14 @20146 has 25 MA's),

Gene: GantcherGoblin_20 Start: 16389, Stop: 16520, Start Num: 14
Candidate Starts for GantcherGoblin_20:
(Start: 14 @16389 has 25 MA's), (19, 16455),

Gene: Gordon_24 Start: 20720, Stop: 20854, Start Num: 14

Candidate Starts for Gordon_24:
(Start: 14 @20720 has 25 MA's),

Gene: Inked_26 Start: 20362, Stop: 20490, Start Num: 14
Candidate Starts for Inked_26:
(Start: 14 @20362 has 25 MA's),

Gene: Issa_24 Start: 19424, Stop: 19558, Start Num: 14
Candidate Starts for Issa_24:
(Start: 14 @19424 has 25 MA's),

Gene: KevinMinion_21 Start: 17483, Stop: 17614, Start Num: 14
Candidate Starts for KevinMinion_21:
(Start: 14 @17483 has 25 MA's), (19, 17549),

Gene: Kinny_24 Start: 18243, Stop: 18374, Start Num: 14
Candidate Starts for Kinny_24:
(Start: 14 @18243 has 25 MA's),

Gene: Leathea_21 Start: 16379, Stop: 16507, Start Num: 14
Candidate Starts for Leathea_21:
(8, 16310), (Start: 14 @16379 has 25 MA's),

Gene: Lewando_24 Start: 18312, Stop: 18443, Start Num: 14
Candidate Starts for Lewando_24:
(5, 18219), (8, 18243), (11, 18273), (Start: 14 @18312 has 25 MA's),

Gene: LiSara_29 Start: 22686, Stop: 22811, Start Num: 14
Candidate Starts for LiSara_29:
(6, 22602), (9, 22620), (Start: 14 @22686 has 25 MA's),

Gene: LilHuddy_25 Start: 19795, Stop: 19929, Start Num: 15
Candidate Starts for LilHuddy_25:
(Start: 15 @19795 has 6 MA's),

Gene: LucySwiss_24 Start: 19449, Stop: 19583, Start Num: 14
Candidate Starts for LucySwiss_24:
(Start: 14 @19449 has 25 MA's),

Gene: Maruru_28 Start: 27558, Stop: 27689, Start Num: 16
Candidate Starts for Maruru_28:
(16, 27558),

Gene: Merry_ Start: 20000, Stop: 20134, Start Num: 12
Candidate Starts for Merry_:
(4, 19919), (Start: 12 @20000 has 2 MA's), (17, 20042), (18, 20048), (19, 20081),

Gene: MiniBagel_24 Start: 20674, Stop: 20811, Start Num: 14
Candidate Starts for MiniBagel_24:
(Start: 14 @20674 has 25 MA's),

Gene: Navi1117_22 Start: 16640, Stop: 16771, Start Num: 14
Candidate Starts for Navi1117_22:

(Start: 14 @16640 has 25 MA's),

Gene: Nightmare_25 Start: 19984, Stop: 20118, Start Num: 14

Candidate Starts for Nightmare_25:

(Start: 14 @19984 has 25 MA's),

Gene: Niktson_24 Start: 20146, Stop: 20283, Start Num: 14

Candidate Starts for Niktson_24:

(Start: 14 @20146 has 25 MA's),

Gene: Nivinsha_24 Start: 19537, Stop: 19671, Start Num: 14

Candidate Starts for Nivinsha_24:

(Start: 14 @19537 has 25 MA's),

Gene: Phaby_25 Start: 19718, Stop: 19852, Start Num: 15

Candidate Starts for Phaby_25:

(Start: 15 @19718 has 6 MA's),

Gene: Phaila_20 Start: 15967, Stop: 16098, Start Num: 14

Candidate Starts for Phaila_20:

(Start: 14 @15967 has 25 MA's),

Gene: Prairie_33 Start: 27099, Stop: 27230, Start Num: 15

Candidate Starts for Prairie_33:

(Start: 15 @27099 has 6 MA's),

Gene: Renaldo_26 Start: 18321, Stop: 18452, Start Num: 14

Candidate Starts for Renaldo_26:

(Start: 14 @18321 has 25 MA's),

Gene: Salgado_30 Start: 22688, Stop: 22822, Start Num: 14

Candidate Starts for Salgado_30:

(9, 22625), (Start: 14 @22688 has 25 MA's),

Gene: ScienceWizSam_26 Start: 19938, Stop: 20072, Start Num: 14

Candidate Starts for ScienceWizSam_26:

(Start: 14 @19938 has 25 MA's),

Gene: Shepard_25 Start: 19792, Stop: 19926, Start Num: 15

Candidate Starts for Shepard_25:

(Start: 15 @19792 has 6 MA's),

Gene: Sunny_ Start: 20000, Stop: 20134, Start Num: 12

Candidate Starts for Sunny_:

(4, 19919), (Start: 12 @20000 has 2 MA's), (17, 20042), (18, 20048), (19, 20081),

Gene: Synopsis_23 Start: 19598, Stop: 19735, Start Num: 14

Candidate Starts for Synopsis_23:

(Start: 14 @19598 has 25 MA's),

Gene: Tatanka_24 Start: 20085, Stop: 20219, Start Num: 14

Candidate Starts for Tatanka_24:

(Start: 14 @20085 has 25 MA's),

Gene: Teacup_24 Start: 19451, Stop: 19588, Start Num: 14
Candidate Starts for Teacup_24:
(Start: 14 @19451 has 25 MA's),

Gene: Tenney120_22 Start: 16675, Stop: 16806, Start Num: 14
Candidate Starts for Tenney120_22:
(Start: 14 @16675 has 25 MA's),

Gene: Tenno_25 Start: 20683, Stop: 20820, Start Num: 14
Candidate Starts for Tenno_25:
(Start: 14 @20683 has 25 MA's),

Gene: Tokki_25 Start: 19743, Stop: 19877, Start Num: 15
Candidate Starts for Tokki_25:
(Start: 15 @19743 has 6 MA's),

Gene: TrixiePhattel_21 Start: 16592, Stop: 16723, Start Num: 14
Candidate Starts for TrixiePhattel_21:
(Start: 14 @16592 has 25 MA's),

Gene: Trustiboi_25 Start: 20151, Stop: 20285, Start Num: 15
Candidate Starts for Trustiboi_25:
(7, 20073), (10, 20106), (Start: 15 @20151 has 6 MA's),

Gene: Uzumaki_21 Start: 17208, Stop: 17339, Start Num: 14
Candidate Starts for Uzumaki_21:
(Start: 14 @17208 has 25 MA's),

Gene: Zeina_21 Start: 16589, Stop: 16720, Start Num: 14
Candidate Starts for Zeina_21:
(Start: 14 @16589 has 25 MA's),