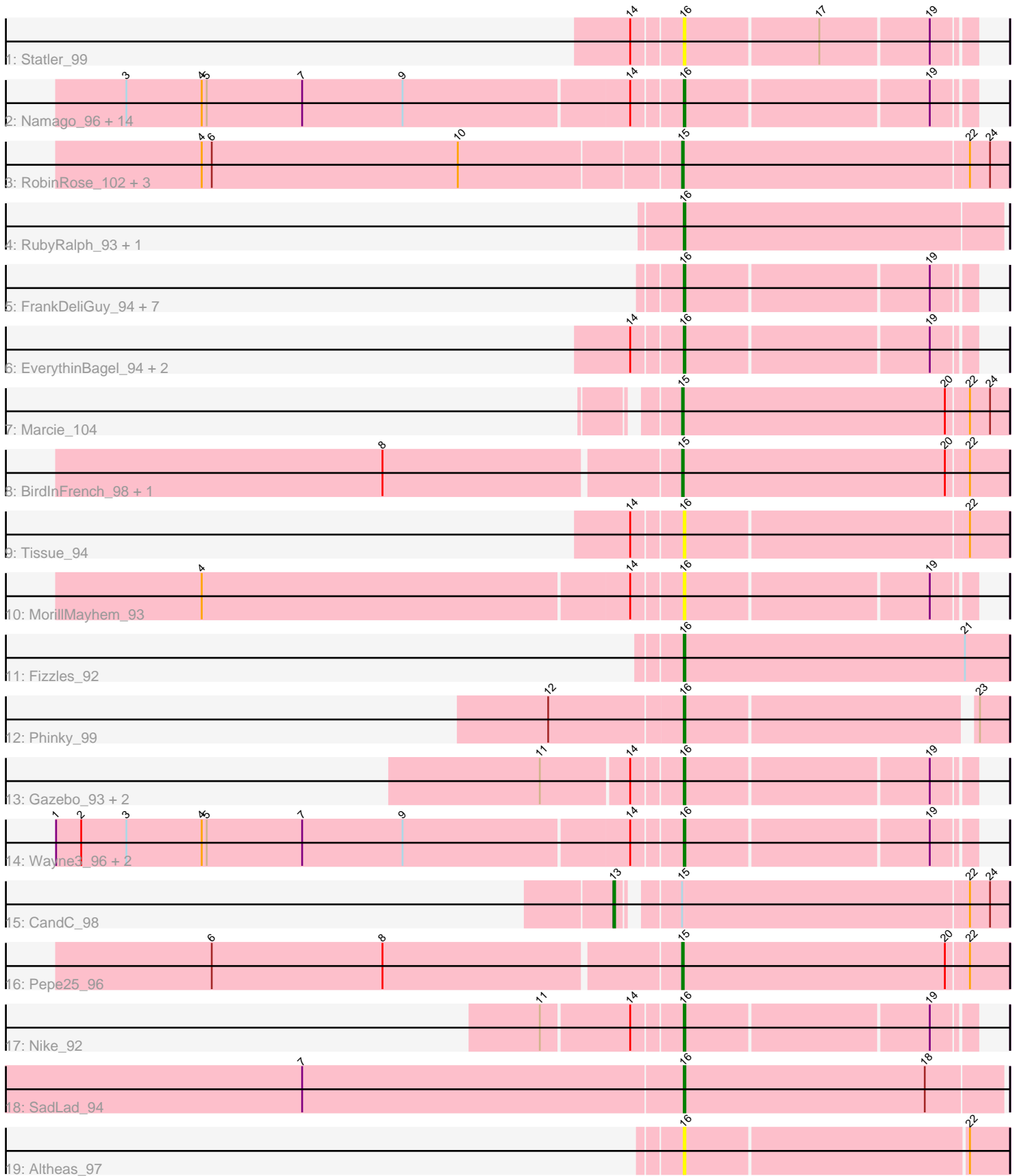


Pham 218028



Note: Tracks are now grouped by subcluster and scaled. Switching in subcluster is indicated by changes in track color. Track scale is now set by default to display the region 30 bp upstream of start 1 to 30 bp downstream of the last possible start. If this default region is judged to be packed too tightly with annotated starts, the track will be further scaled to only show that region of the ORF with annotated starts. This action will be indicated by adding "Zoomed" to the title. For starts, yellow indicates the location of called starts comprised solely of Glimmer/GeneMark auto-annotations, green indicates the location of called starts with at least 1 manual gene annotation.

Pham 218028 Report

This analysis was run 03/28/25 on database version 593.

Pham number 218028 has 51 members, 13 are drafts.

Phages represented in each track:

- Track 1 : Statler_99
- Track 2 : Namago_96, Viceroy_93, Zhafia_100, Sillytadpoles_97, Mentos_98, Rudy_92, DonaldDuck_96, SallyK_96, Zagie_96, Kyva_98, Teehee_95, Grassboy_99, Quammi_94, Jehoshaphat_96, Llemily_96
- Track 3 : RobinRose_102, Romm_102, Tempo_101, OneinaGillian_97
- Track 4 : RubyRalph_93, Fransoyer_93
- Track 5 : FrankDeliGuy_94, Judebell_94, Mashley_93, Hyperion_93, BabyDotz_92, Rowlf_91, Lonelysoil_92, Squash_96
- Track 6 : EverythinBagel_94, Casend_95, StrawberryJamm_100
- Track 7 : Marcie_104
- Track 8 : BirdInFrench_98, Wilca_98
- Track 9 : Tissue_94
- Track 10 : MorillMayhem_93
- Track 11 : Fizzles_92
- Track 12 : Phinky_99
- Track 13 : Gazebo_93, AluminumJesus_91, Blab_91
- Track 14 : Wayne3_96, Phabia_94, Wheelie_94
- Track 15 : CandC_98
- Track 16 : Pepe25_96
- Track 17 : Nike_92
- Track 18 : SadLad_94
- Track 19 : Altheas_97

Summary of Final Annotations (See graph section above for start numbers):

The start number called the most often in the published annotations is 16, it was called in 30 of the 38 non-draft genes in the pham.

Genes that call this "Most Annotated" start:

- Altheas_97, AluminumJesus_91, BabyDotz_92, Blab_91, Casend_95, DonaldDuck_96, EverythinBagel_94, Fizzles_92, FrankDeliGuy_94, Fransoyer_93, Gazebo_93, Grassboy_99, Hyperion_93, Jehoshaphat_96, Judebell_94, Kyva_98, Llemily_96, Lonelysoil_92, Mashley_93, Mentos_98, MorillMayhem_93, Namago_96, Nike_92, Phabia_94, Phinky_99, Quammi_94, Rowlf_91, RubyRalph_93, Rudy_92,

SadLad_94, SallyK_96, Sillytadpoles_97, Squash_96, Statler_99, StrawberryJamm_100, Teehee_95, Tissue_94, Viceroy_93, Wayne3_96, Wheelie_94, Zagie_96, Zhafia_100,

Genes that have the "Most Annotated" start but do not call it:

-

Genes that do not have the "Most Annotated" start:

• BirdInFrench_98, CandC_98, Marcie_104, OneinaGillian_97, Pepe25_96, RobinRose_102, Romm_102, Tempo_101, Wilca_98,

Summary by start number:

Start 13:

- Found in 1 of 51 (2.0%) of genes in pham
- Manual Annotations of this start: 1 of 38
- Called 100.0% of time when present
- Phage (with cluster) where this start called: CandC_98 (EG),

Start 15:

- Found in 9 of 51 (17.6%) of genes in pham
- Manual Annotations of this start: 7 of 38
- Called 88.9% of time when present
- Phage (with cluster) where this start called: BirdInFrench_98 (EG), Marcie_104 (EG), OneinaGillian_97 (EG), Pepe25_96 (EG), RobinRose_102 (EG), Romm_102 (EG), Tempo_101 (EG), Wilca_98 (EG),

Start 16:

- Found in 42 of 51 (82.4%) of genes in pham
- Manual Annotations of this start: 30 of 38
- Called 100.0% of time when present
- Phage (with cluster) where this start called: Altheas_97 (EG), AluminumJesus_91 (EG), BabyDotz_92 (EG), Blab_91 (EG), Casend_95 (EG), DonaldDuck_96 (EG), EverythinBagel_94 (EG), Fizzles_92 (EG), FrankDeliGuy_94 (EG), Fransoyer_93 (EG), Gazebo_93 (EG), Grassboy_99 (EG), Hyperion_93 (EG), Jehoshaphat_96 (EG), Judebell_94 (EG), Kyva_98 (EG), Lemily_96 (EG), Lonelysoil_92 (EG), Mashley_93 (EG), Mentos_98 (EG), MorillMayhem_93 (EG), Namago_96 (EG), Nike_92 (EG), Phabia_94 (EG), Phinky_99 (EG), Quammi_94 (EG), Rowlf_91 (EG), RubyRalph_93 (EG), Rudy_92 (EG), SadLad_94 (EG), SallyK_96 (EG), Sillytadpoles_97 (EG), Squash_96 (EG), Statler_99 (EG), StrawberryJamm_100 (EG), Teehee_95 (EG), Tissue_94 (EG), Viceroy_93 (EG), Wayne3_96 (EG), Wheelie_94 (EG), Zagie_96 (EG), Zhafia_100 (EG),

Summary by clusters:

There is one cluster represented in this pham: EG

Info for manual annotations of cluster EG:

- Start number 13 was manually annotated 1 time for cluster EG.
- Start number 15 was manually annotated 7 times for cluster EG.
- Start number 16 was manually annotated 30 times for cluster EG.

Gene Information:

Gene: Altheas_97 Start: 58584, Stop: 58396, Start Num: 16

Candidate Starts for Altheas_97:

(Start: 16 @58584 has 30 MA's), (22, 58419),

Gene: AluminumJesus_91 Start: 56993, Stop: 56829, Start Num: 16

Candidate Starts for AluminumJesus_91:

(11, 57071), (14, 57020), (Start: 16 @56993 has 30 MA's), (19, 56852),

Gene: BabyDotz_92 Start: 58860, Stop: 58696, Start Num: 16

Candidate Starts for BabyDotz_92:

(Start: 16 @58860 has 30 MA's), (19, 58719),

Gene: BirdInFrench_98 Start: 59293, Stop: 59102, Start Num: 15

Candidate Starts for BirdInFrench_98:

(8, 59464), (Start: 15 @59293 has 7 MA's), (20, 59137), (22, 59125),

Gene: Blab_91 Start: 57566, Stop: 57402, Start Num: 16

Candidate Starts for Blab_91:

(11, 57644), (14, 57593), (Start: 16 @57566 has 30 MA's), (19, 57425),

Gene: CandC_98 Start: 59455, Stop: 59237, Start Num: 13

Candidate Starts for CandC_98:

(Start: 13 @59455 has 1 MA's), (Start: 15 @59428 has 7 MA's), (22, 59260), (24, 59248),

Gene: Casend_95 Start: 58195, Stop: 58031, Start Num: 16

Candidate Starts for Casend_95:

(14, 58222), (Start: 16 @58195 has 30 MA's), (19, 58054),

Gene: DonaldDuck_96 Start: 57595, Stop: 57431, Start Num: 16

Candidate Starts for DonaldDuck_96:

(3, 57919), (4, 57874), (5, 57871), (7, 57814), (9, 57754), (14, 57622), (Start: 16 @57595 has 30 MA's), (19, 57454),

Gene: EverythinBagel_94 Start: 57390, Stop: 57226, Start Num: 16

Candidate Starts for EverythinBagel_94:

(14, 57417), (Start: 16 @57390 has 30 MA's), (19, 57249),

Gene: Fizzles_92 Start: 57613, Stop: 57419, Start Num: 16

Candidate Starts for Fizzles_92:

(Start: 16 @57613 has 30 MA's), (21, 57445),

Gene: FrankDeliGuy_94 Start: 57873, Stop: 57709, Start Num: 16

Candidate Starts for FrankDeliGuy_94:

(Start: 16 @57873 has 30 MA's), (19, 57732),

Gene: Fransoyer_93 Start: 58717, Stop: 58529, Start Num: 16

Candidate Starts for Fransoyer_93:

(Start: 16 @58717 has 30 MA's),

Gene: Gazebo_93 Start: 57571, Stop: 57407, Start Num: 16

Candidate Starts for Gazebo_93:

(11, 57649), (14, 57598), (Start: 16 @57571 has 30 MA's), (19, 57430),

Gene: Grassboy_99 Start: 58496, Stop: 58332, Start Num: 16

Candidate Starts for Grassboy_99:

(3, 58820), (4, 58775), (5, 58772), (7, 58715), (9, 58655), (14, 58523), (Start: 16 @58496 has 30 MA's), (19, 58355),

Gene: Hyperion_93 Start: 57633, Stop: 57469, Start Num: 16

Candidate Starts for Hyperion_93:

(Start: 16 @57633 has 30 MA's), (19, 57492),

Gene: Jehoshaphat_96 Start: 58229, Stop: 58065, Start Num: 16

Candidate Starts for Jehoshaphat_96:

(3, 58553), (4, 58508), (5, 58505), (7, 58448), (9, 58388), (14, 58256), (Start: 16 @58229 has 30 MA's), (19, 58088),

Gene: Judebell_94 Start: 57627, Stop: 57463, Start Num: 16

Candidate Starts for Judebell_94:

(Start: 16 @57627 has 30 MA's), (19, 57486),

Gene: Kyva_98 Start: 58520, Stop: 58356, Start Num: 16

Candidate Starts for Kyva_98:

(3, 58844), (4, 58799), (5, 58796), (7, 58739), (9, 58679), (14, 58547), (Start: 16 @58520 has 30 MA's), (19, 58379),

Gene: Llemily_96 Start: 57290, Stop: 57126, Start Num: 16

Candidate Starts for Llemily_96:

(3, 57614), (4, 57569), (5, 57566), (7, 57509), (9, 57449), (14, 57317), (Start: 16 @57290 has 30 MA's), (19, 57149),

Gene: Lonelysoil_92 Start: 57050, Stop: 56886, Start Num: 16

Candidate Starts for Lonelysoil_92:

(Start: 16 @57050 has 30 MA's), (19, 56909),

Gene: Marcie_104 Start: 60112, Stop: 59921, Start Num: 15

Candidate Starts for Marcie_104:

(Start: 15 @60112 has 7 MA's), (20, 59956), (22, 59944), (24, 59932),

Gene: Mashley_93 Start: 57722, Stop: 57558, Start Num: 16

Candidate Starts for Mashley_93:

(Start: 16 @57722 has 30 MA's), (19, 57581),

Gene: Mentos_98 Start: 58681, Stop: 58517, Start Num: 16

Candidate Starts for Mentos_98:

(3, 59005), (4, 58960), (5, 58957), (7, 58900), (9, 58840), (14, 58708), (Start: 16 @58681 has 30 MA's), (19, 58540),

Gene: MorillMayhem_93 Start: 57850, Stop: 57686, Start Num: 16

Candidate Starts for MorillMayhem_93:

(4, 58129), (14, 57877), (Start: 16 @57850 has 30 MA's), (19, 57709),

Gene: Namago_96 Start: 57777, Stop: 57613, Start Num: 16

Candidate Starts for Namago_96:

(3, 58101), (4, 58056), (5, 58053), (7, 57996), (9, 57936), (14, 57804), (Start: 16 @57777 has 30 MA's), (19, 57636),

Gene: Nike_92 Start: 57995, Stop: 57831, Start Num: 16
Candidate Starts for Nike_92:
(11, 58073), (14, 58022), (Start: 16 @57995 has 30 MA's), (19, 57854),

Gene: OneinaGillian_97 Start: 58922, Stop: 58731, Start Num: 15
Candidate Starts for OneinaGillian_97:
(4, 59201), (6, 59195), (10, 59048), (Start: 15 @58922 has 7 MA's), (22, 58754), (24, 58742),

Gene: Pepe25_96 Start: 58212, Stop: 58021, Start Num: 15
Candidate Starts for Pepe25_96:
(6, 58485), (8, 58383), (Start: 15 @58212 has 7 MA's), (20, 58056), (22, 58044),

Gene: Phabia_94 Start: 57627, Stop: 57463, Start Num: 16
Candidate Starts for Phabia_94:
(1, 57993), (2, 57978), (3, 57951), (4, 57906), (5, 57903), (7, 57846), (9, 57786), (14, 57654), (Start: 16 @57627 has 30 MA's), (19, 57486),

Gene: Phinky_99 Start: 59368, Stop: 59186, Start Num: 16
Candidate Starts for Phinky_99:
(12, 59446), (Start: 16 @59368 has 30 MA's), (23, 59203),

Gene: Quammi_94 Start: 57572, Stop: 57408, Start Num: 16
Candidate Starts for Quammi_94:
(3, 57896), (4, 57851), (5, 57848), (7, 57791), (9, 57731), (14, 57599), (Start: 16 @57572 has 30 MA's), (19, 57431),

Gene: RobinRose_102 Start: 60050, Stop: 59859, Start Num: 15
Candidate Starts for RobinRose_102:
(4, 60329), (6, 60323), (10, 60176), (Start: 15 @60050 has 7 MA's), (22, 59882), (24, 59870),

Gene: Romm_102 Start: 60047, Stop: 59856, Start Num: 15
Candidate Starts for Romm_102:
(4, 60326), (6, 60320), (10, 60173), (Start: 15 @60047 has 7 MA's), (22, 59879), (24, 59867),

Gene: Rowlf_91 Start: 57440, Stop: 57276, Start Num: 16
Candidate Starts for Rowlf_91:
(Start: 16 @57440 has 30 MA's), (19, 57299),

Gene: RubyRalph_93 Start: 58318, Stop: 58130, Start Num: 16
Candidate Starts for RubyRalph_93:
(Start: 16 @58318 has 30 MA's),

Gene: Rudy_92 Start: 57438, Stop: 57274, Start Num: 16
Candidate Starts for Rudy_92:
(3, 57762), (4, 57717), (5, 57714), (7, 57657), (9, 57597), (14, 57465), (Start: 16 @57438 has 30 MA's), (19, 57297),

Gene: SadLad_94 Start: 59236, Stop: 59048, Start Num: 16
Candidate Starts for SadLad_94:
(7, 59461), (Start: 16 @59236 has 30 MA's), (18, 59092),

Gene: SallyK_96 Start: 58593, Stop: 58429, Start Num: 16

Candidate Starts for SallyK_96:

(3, 58917), (4, 58872), (5, 58869), (7, 58812), (9, 58752), (14, 58620), (Start: 16 @58593 has 30 MA's), (19, 58452),

Gene: Sillytadpoles_97 Start: 57278, Stop: 57114, Start Num: 16

Candidate Starts for Sillytadpoles_97:

(3, 57602), (4, 57557), (5, 57554), (7, 57497), (9, 57437), (14, 57305), (Start: 16 @57278 has 30 MA's), (19, 57137),

Gene: Squash_96 Start: 57979, Stop: 57821, Start Num: 16

Candidate Starts for Squash_96:

(Start: 16 @57979 has 30 MA's), (19, 57838),

Gene: Statler_99 Start: 58009, Stop: 57845, Start Num: 16

Candidate Starts for Statler_99:

(14, 58036), (Start: 16 @58009 has 30 MA's), (17, 57931), (19, 57868),

Gene: StrawberryJamm_100 Start: 57547, Stop: 57383, Start Num: 16

Candidate Starts for StrawberryJamm_100:

(14, 57574), (Start: 16 @57547 has 30 MA's), (19, 57406),

Gene: Teehee_95 Start: 58226, Stop: 58062, Start Num: 16

Candidate Starts for Teehee_95:

(3, 58550), (4, 58505), (5, 58502), (7, 58445), (9, 58385), (14, 58253), (Start: 16 @58226 has 30 MA's), (19, 58085),

Gene: Tempo_101 Start: 60084, Stop: 59893, Start Num: 15

Candidate Starts for Tempo_101:

(4, 60363), (6, 60357), (10, 60210), (Start: 15 @60084 has 7 MA's), (22, 59916), (24, 59904),

Gene: Tissue_94 Start: 58211, Stop: 58023, Start Num: 16

Candidate Starts for Tissue_94:

(14, 58238), (Start: 16 @58211 has 30 MA's), (22, 58046),

Gene: Viceroy_93 Start: 57393, Stop: 57229, Start Num: 16

Candidate Starts for Viceroy_93:

(3, 57717), (4, 57672), (5, 57669), (7, 57612), (9, 57552), (14, 57420), (Start: 16 @57393 has 30 MA's), (19, 57252),

Gene: Wayne3_96 Start: 58196, Stop: 58032, Start Num: 16

Candidate Starts for Wayne3_96:

(1, 58562), (2, 58547), (3, 58520), (4, 58475), (5, 58472), (7, 58415), (9, 58355), (14, 58223), (Start: 16 @58196 has 30 MA's), (19, 58055),

Gene: Wheelie_94 Start: 57517, Stop: 57353, Start Num: 16

Candidate Starts for Wheelie_94:

(1, 57883), (2, 57868), (3, 57841), (4, 57796), (5, 57793), (7, 57736), (9, 57676), (14, 57544), (Start: 16 @57517 has 30 MA's), (19, 57376),

Gene: Wilca_98 Start: 59293, Stop: 59102, Start Num: 15

Candidate Starts for Wilca_98:

(8, 59464), (Start: 15 @59293 has 7 MA's), (20, 59137), (22, 59125),

Gene: Zagie_96 Start: 58038, Stop: 57874, Start Num: 16

Candidate Starts for Zagie_96:

(3, 58362), (4, 58317), (5, 58314), (7, 58257), (9, 58197), (14, 58065), (Start: 16 @58038 has 30 MA's),
(19, 57897),

Gene: Zhafia_100 Start: 58072, Stop: 57908, Start Num: 16

Candidate Starts for Zhafia_100:

(3, 58396), (4, 58351), (5, 58348), (7, 58291), (9, 58231), (14, 58099), (Start: 16 @58072 has 30 MA's),
(19, 57931),