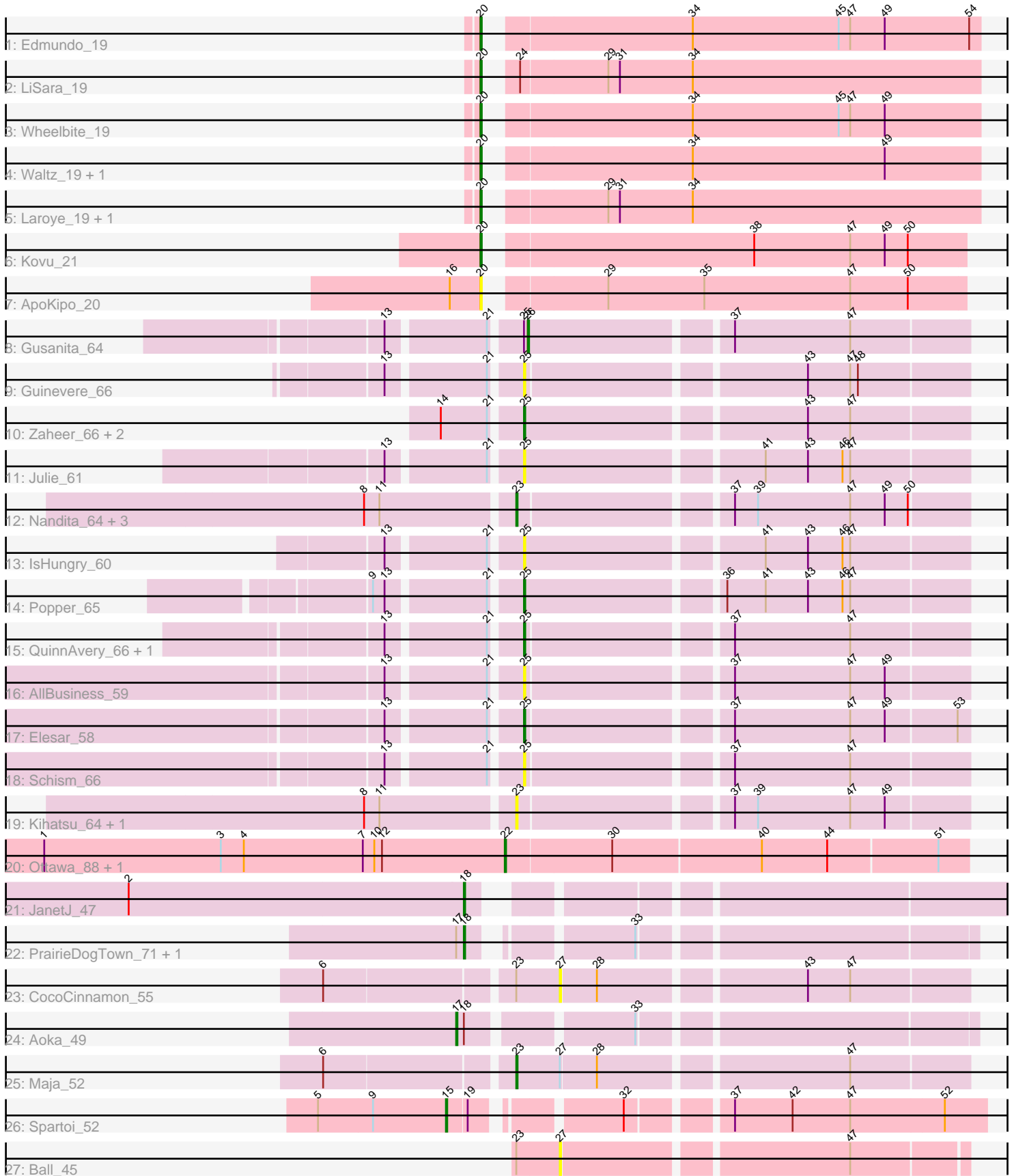


Pham 218115



Note: Tracks are now grouped by subcluster and scaled. Switching in subcluster is indicated by changes in track color. Track scale is now set by default to display the region 30 bp upstream of start 1 to 30 bp downstream of the last possible start. If this default region is judged to be packed too tightly with annotated starts, the track will be further scaled to only show that region of the ORF with annotated starts. This action will be indicated by adding "Zoomed" to the title. For starts, yellow indicates the location of called starts comprised solely of Glimmer/GeneMark auto-annotations, green indicates the location of called starts with at least 1 manual gene annotation.

Pham 218115 Report

This analysis was run 03/28/25 on database version 593.

Pham number 218115 has 38 members, 15 are drafts.

Phages represented in each track:

- Track 1 : Edmundo_19
- Track 2 : LiSara_19
- Track 3 : Wheelbite_19
- Track 4 : Waltz_19, Shrooms_19
- Track 5 : Laroye_19, Salgado_19
- Track 6 : Kovu_21
- Track 7 : ApoKipo_20
- Track 8 : Gusanita_64
- Track 9 : Guinevere_66
- Track 10 : Zaheer_66, GoodLuckBabe_65, Halloweekend_58
- Track 11 : Julie_61
- Track 12 : Nandita_64, Ichiang_60, Donatella_64, Ryan_65
- Track 13 : IsHungry_60
- Track 14 : Popper_65
- Track 15 : QuinnAvery_66, Cole_60
- Track 16 : AllBusiness_59
- Track 17 : Elesar_58
- Track 18 : Schism_66
- Track 19 : Kihatsu_64, Lenoxika_61
- Track 20 : Ottawa_88, Kharcho_88
- Track 21 : JanetJ_47
- Track 22 : PrairieDogTown_71, EvenBluerMoon_45
- Track 23 : CocoCinnamon_55
- Track 24 : Aoka_49
- Track 25 : Maja_52
- Track 26 : Spartoi_52
- Track 27 : Ball_45

Summary of Final Annotations (See graph section above for start numbers):

The start number called the most often in the published annotations is 20, it was called in 8 of the 23 non-draft genes in the pham.

Genes that call this "Most Annotated" start:

- ApoKipo_20, Edmundo_19, Kovu_21, Laroye_19, LiSara_19, Salgado_19, Shrooms_19, Waltz_19, Wheelbite_19,

Genes that have the "Most Annotated" start but do not call it:

-

Genes that do not have the "Most Annotated" start:

- AllBusiness_59, Aoka_49, Ball_45, CocoCinnamon_55, Cole_60, Donatella_64, Elesar_58, EvenBluerMoon_45, GoodLuckBabe_65, Guinevere_66, Gusanita_64, Halloweekend_58, Ichiang_60, IsHungry_60, JanetJ_47, Julie_61, Kharcho_88, Kihatsu_64, Lenoxika_61, Maja_52, Nandita_64, Ottawa_88, Popper_65, PrairieDogTown_71, QuinnAvery_66, Ryan_65, Schism_66, Spartoi_52, Zaheer_66,

Summary by start number:

Start 15:

- Found in 1 of 38 (2.6%) of genes in pham
- Manual Annotations of this start: 1 of 23
- Called 100.0% of time when present
- Phage (with cluster) where this start called: Spartoi_52 (singleton),

Start 17:

- Found in 3 of 38 (7.9%) of genes in pham
- Manual Annotations of this start: 1 of 23
- Called 33.3% of time when present
- Phage (with cluster) where this start called: Aoka_49 (FO),

Start 18:

- Found in 4 of 38 (10.5%) of genes in pham
- Manual Annotations of this start: 2 of 23
- Called 75.0% of time when present
- Phage (with cluster) where this start called: EvenBluerMoon_45 (FO), JanetJ_47 (FO), PrairieDogTown_71 (FO),

Start 20:

- Found in 9 of 38 (23.7%) of genes in pham
- Manual Annotations of this start: 8 of 23
- Called 100.0% of time when present
- Phage (with cluster) where this start called: ApoKipo_20 (AL), Edmundo_19 (AL), Kovu_21 (AL), Laroye_19 (AL), LiSara_19 (AL), Salgado_19 (AL), Shrooms_19 (AL), Waltz_19 (AL), Wheelbite_19 (AL),

Start 22:

- Found in 2 of 38 (5.3%) of genes in pham
- Manual Annotations of this start: 2 of 23
- Called 100.0% of time when present
- Phage (with cluster) where this start called: Kharcho_88 (FM), Ottawa_88 (FM),

Start 23:

- Found in 9 of 38 (23.7%) of genes in pham
- Manual Annotations of this start: 3 of 23
- Called 77.8% of time when present

- Phage (with cluster) where this start called: Donatella_64 (FF), Ichiang_60 (FF), Kihatsu_64 (FF), Lenoxika_61 (FF), Maja_52 (FO), Nandita_64 (FF), Ryan_65 (FF),

Start 25:

- Found in 13 of 38 (34.2%) of genes in pham
- Manual Annotations of this start: 5 of 23
- Called 92.3% of time when present
- Phage (with cluster) where this start called: AllBusiness_59 (FF), Cole_60 (FF), Elesar_58 (FF), GoodLuckBabe_65 (FF), Guinevere_66 (FF), Halloweekend_58 (FF), IsHungry_60 (FF), Julie_61 (FF), Popper_65 (FF), QuinnAvery_66 (FF), Schism_66 (FF), Zaheer_66 (FF),

Start 26:

- Found in 1 of 38 (2.6%) of genes in pham
- Manual Annotations of this start: 1 of 23
- Called 100.0% of time when present
- Phage (with cluster) where this start called: Gusanita_64 (FF),

Start 27:

- Found in 3 of 38 (7.9%) of genes in pham
- No Manual Annotations of this start.
- Called 66.7% of time when present
- Phage (with cluster) where this start called: Ball_45 (singleton), CocoCinnamon_55 (FO),

Summary by clusters:

There are 5 clusters represented in this pham: singleton, FM, AL, FF, FO,

Info for manual annotations of cluster AL:

- Start number 20 was manually annotated 8 times for cluster AL.

Info for manual annotations of cluster FF:

- Start number 23 was manually annotated 2 times for cluster FF.
- Start number 25 was manually annotated 5 times for cluster FF.
- Start number 26 was manually annotated 1 time for cluster FF.

Info for manual annotations of cluster FM:

- Start number 22 was manually annotated 2 times for cluster FM.

Info for manual annotations of cluster FO:

- Start number 17 was manually annotated 1 time for cluster FO.
- Start number 18 was manually annotated 2 times for cluster FO.
- Start number 23 was manually annotated 1 time for cluster FO.

Gene Information:

Gene: AllBusiness_59 Start: 40667, Stop: 40993, Start Num: 25

Candidate Starts for AllBusiness_59:

(13, 40574), (21, 40646), (Start: 25 @40667 has 5 MA's), (37, 40814), (47, 40904), (49, 40931),

Gene: Aoka_49 Start: 33639, Stop: 34004, Start Num: 17
Candidate Starts for Aoka_49:
(Start: 17 @33639 has 1 MA's), (Start: 18 @33645 has 2 MA's), (33, 33759),

Gene: ApoKipo_20 Start: 15050, Stop: 15406, Start Num: 20
Candidate Starts for ApoKipo_20:
(16, 15026), (Start: 20 @15050 has 8 MA's), (29, 15128), (35, 15203), (47, 15317), (50, 15362),

Gene: Ball_45 Start: 32713, Stop: 33009, Start Num: 27
Candidate Starts for Ball_45:
(Start: 23 @32680 has 3 MA's), (27, 32713), (47, 32923),

Gene: CocoCinnamon_55 Start: 33938, Stop: 34237, Start Num: 27
Candidate Starts for CocoCinnamon_55:
(6, 33767), (Start: 23 @33905 has 3 MA's), (27, 33938), (28, 33965), (43, 34115), (47, 34148),

Gene: Cole_60 Start: 39459, Stop: 39785, Start Num: 25
Candidate Starts for Cole_60:
(13, 39366), (21, 39438), (Start: 25 @39459 has 5 MA's), (37, 39606), (47, 39696),

Gene: Donatella_64 Start: 40075, Stop: 40407, Start Num: 23
Candidate Starts for Donatella_64:
(8, 39964), (11, 39976), (Start: 23 @40075 has 3 MA's), (37, 40228), (39, 40246), (47, 40318), (49, 40345), (50, 40363),

Gene: Edmundo_19 Start: 15771, Stop: 16139, Start Num: 20
Candidate Starts for Edmundo_19:
(Start: 20 @15771 has 8 MA's), (34, 15915), (45, 16029), (47, 16038), (49, 16065), (54, 16131),

Gene: Elesar_58 Start: 40564, Stop: 40890, Start Num: 25
Candidate Starts for Elesar_58:
(13, 40471), (21, 40543), (Start: 25 @40564 has 5 MA's), (37, 40711), (47, 40801), (49, 40828), (53, 40882),

Gene: EvenBluerMoon_45 Start: 33017, Stop: 33364, Start Num: 18
Candidate Starts for EvenBluerMoon_45:
(Start: 17 @33011 has 1 MA's), (Start: 18 @33017 has 2 MA's), (33, 33119),

Gene: GoodLuckBabe_65 Start: 39957, Stop: 40286, Start Num: 25
Candidate Starts for GoodLuckBabe_65:
(14, 39900), (21, 39936), (Start: 25 @39957 has 5 MA's), (43, 40164), (47, 40197),

Gene: Guinevere_66 Start: 40033, Stop: 40359, Start Num: 25
Candidate Starts for Guinevere_66:
(13, 39940), (21, 40012), (Start: 25 @40033 has 5 MA's), (43, 40237), (47, 40270), (48, 40276),

Gene: Gusanita_64 Start: 40269, Stop: 40595, Start Num: 26
Candidate Starts for Gusanita_64:
(13, 40173), (21, 40245), (Start: 25 @40266 has 5 MA's), (Start: 26 @40269 has 1 MA's), (37, 40416), (47, 40506),

Gene: Halloweekend_58 Start: 39548, Stop: 39877, Start Num: 25
Candidate Starts for Halloweekend_58:

(14, 39491), (21, 39527), (Start: 25 @39548 has 5 MA's), (43, 39755), (47, 39788),

Gene: Ichiang_60 Start: 39435, Stop: 39767, Start Num: 23

Candidate Starts for Ichiang_60:

(8, 39324), (11, 39336), (Start: 23 @39435 has 3 MA's), (37, 39588), (39, 39606), (47, 39678), (49, 39705), (50, 39723),

Gene: IsHungry_60 Start: 38345, Stop: 38674, Start Num: 25

Candidate Starts for IsHungry_60:

(13, 38252), (21, 38324), (Start: 25 @38345 has 5 MA's), (41, 38519), (43, 38552), (46, 38579), (47, 38585),

Gene: JanetJ_47 Start: 34159, Stop: 34539, Start Num: 18

Candidate Starts for JanetJ_47:

(2, 33907), (Start: 18 @34159 has 2 MA's),

Gene: Julie_61 Start: 39974, Stop: 40303, Start Num: 25

Candidate Starts for Julie_61:

(13, 39881), (21, 39953), (Start: 25 @39974 has 5 MA's), (41, 40148), (43, 40181), (46, 40208), (47, 40214),

Gene: Kharcho_88 Start: 54056, Stop: 54409, Start Num: 22

Candidate Starts for Kharcho_88:

(1, 53696), (3, 53834), (4, 53852), (7, 53945), (10, 53954), (12, 53960), (Start: 22 @54056 has 2 MA's), (30, 54137), (40, 54251), (44, 54302), (51, 54386),

Gene: Kihatsu_64 Start: 40983, Stop: 41315, Start Num: 23

Candidate Starts for Kihatsu_64:

(8, 40872), (11, 40884), (Start: 23 @40983 has 3 MA's), (37, 41136), (39, 41154), (47, 41226), (49, 41253),

Gene: Kovu_21 Start: 15137, Stop: 15493, Start Num: 20

Candidate Starts for Kovu_21:

(Start: 20 @15137 has 8 MA's), (38, 15329), (47, 15404), (49, 15431), (50, 15449),

Gene: Laroye_19 Start: 15483, Stop: 15851, Start Num: 20

Candidate Starts for Laroye_19:

(Start: 20 @15483 has 8 MA's), (29, 15561), (31, 15570), (34, 15627),

Gene: Lenoxika_61 Start: 39310, Stop: 39642, Start Num: 23

Candidate Starts for Lenoxika_61:

(8, 39199), (11, 39211), (Start: 23 @39310 has 3 MA's), (37, 39463), (39, 39481), (47, 39553), (49, 39580),

Gene: LiSara_19 Start: 15538, Stop: 15906, Start Num: 20

Candidate Starts for LiSara_19:

(Start: 20 @15538 has 8 MA's), (24, 15550), (29, 15616), (31, 15625), (34, 15682),

Gene: Maja_52 Start: 34530, Stop: 34862, Start Num: 23

Candidate Starts for Maja_52:

(6, 34392), (Start: 23 @34530 has 3 MA's), (27, 34563), (28, 34590), (47, 34773),

Gene: Nandita_64 Start: 39997, Stop: 40329, Start Num: 23

Candidate Starts for Nandita_64:

(8, 39886), (11, 39898), (Start: 23 @39997 has 3 MA's), (37, 40150), (39, 40168), (47, 40240), (49, 40267), (50, 40285),

Gene: Ottawa_88 Start: 54006, Stop: 54359, Start Num: 22

Candidate Starts for Ottawa_88:

(1, 53646), (3, 53784), (4, 53802), (7, 53895), (10, 53904), (12, 53910), (Start: 22 @54006 has 2 MA's), (30, 54087), (40, 54201), (44, 54252), (51, 54336),

Gene: Popper_65 Start: 39567, Stop: 39896, Start Num: 25

Candidate Starts for Popper_65:

(9, 39465), (13, 39474), (21, 39546), (Start: 25 @39567 has 5 MA's), (36, 39711), (41, 39741), (43, 39774), (46, 39801), (47, 39807),

Gene: PrairieDogTown_71 Start: 33019, Stop: 33366, Start Num: 18

Candidate Starts for PrairieDogTown_71:

(Start: 17 @33013 has 1 MA's), (Start: 18 @33019 has 2 MA's), (33, 33121),

Gene: QuinnAvery_66 Start: 40918, Stop: 41244, Start Num: 25

Candidate Starts for QuinnAvery_66:

(13, 40825), (21, 40897), (Start: 25 @40918 has 5 MA's), (37, 41065), (47, 41155),

Gene: Ryan_65 Start: 40550, Stop: 40882, Start Num: 23

Candidate Starts for Ryan_65:

(8, 40439), (11, 40451), (Start: 23 @40550 has 3 MA's), (37, 40703), (39, 40721), (47, 40793), (49, 40820), (50, 40838),

Gene: Salgado_19 Start: 15491, Stop: 15859, Start Num: 20

Candidate Starts for Salgado_19:

(Start: 20 @15491 has 8 MA's), (29, 15569), (31, 15578), (34, 15635),

Gene: Schism_66 Start: 40995, Stop: 41321, Start Num: 25

Candidate Starts for Schism_66:

(13, 40902), (21, 40974), (Start: 25 @40995 has 5 MA's), (37, 41142), (47, 41232),

Gene: Shrooms_19 Start: 15569, Stop: 15937, Start Num: 20

Candidate Starts for Shrooms_19:

(Start: 20 @15569 has 8 MA's), (34, 15713), (49, 15863),

Gene: Spartoi_52 Start: 33444, Stop: 33818, Start Num: 15

Candidate Starts for Spartoi_52:

(5, 33345), (9, 33387), (Start: 15 @33444 has 1 MA's), (19, 33459), (32, 33555), (37, 33624), (42, 33669), (47, 33714), (52, 33786),

Gene: Waltz_19 Start: 15631, Stop: 15999, Start Num: 20

Candidate Starts for Waltz_19:

(Start: 20 @15631 has 8 MA's), (34, 15775), (49, 15925),

Gene: Wheelbite_19 Start: 15612, Stop: 15980, Start Num: 20

Candidate Starts for Wheelbite_19:

(Start: 20 @15612 has 8 MA's), (34, 15756), (45, 15870), (47, 15879), (49, 15906),

Gene: Zaheer_66 Start: 40976, Stop: 41305, Start Num: 25

Candidate Starts for Zaheer_66:

(14, 40919), (21, 40955), (Start: 25 @40976 has 5 MA's), (43, 41183), (47, 41216),