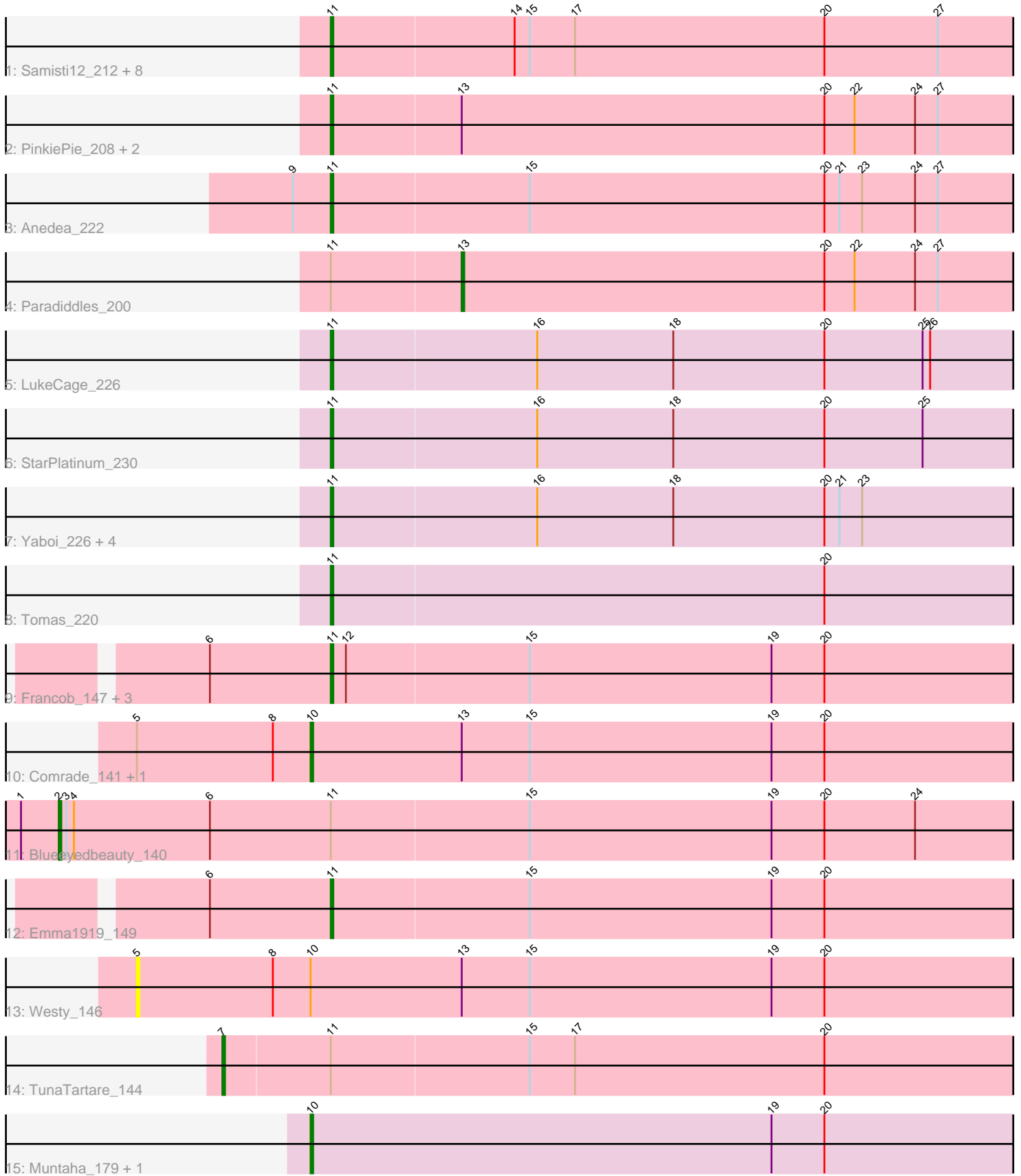


Pham 218146



Note: Tracks are now grouped by subcluster and scaled. Switching in subcluster is indicated by changes in track color. Track scale is now set by default to display the region 30 bp upstream of start 1 to 30 bp downstream of the last possible start. If this default region is judged to be packed too tightly with annotated starts, the track will be further scaled to only show that region of the ORF with annotated starts. This action will be indicated by adding "Zoomed" to the title. For starts, yellow indicates the location of called starts comprised solely of Glimmer/GeneMark auto-annotations, green indicates the location of called starts with at least 1 manual gene annotation.

Pham 218146 Report

This analysis was run 03/28/25 on database version 593.

Pham number 218146 has 34 members, 1 are drafts.

Phages represented in each track:

- Track 1 : Samisti12_212, Lululemon_205, Watermoore_207, PacManQ_205, BlueOtter_206, HangryHippo_206, Sushi23_208, Cross_207, Cursive_210
- Track 2 : PinkiePie_208, Liandry_208, Squillium_211
- Track 3 : Anedea_222
- Track 4 : Paradiddles_200
- Track 5 : LukeCage_226
- Track 6 : StarPlatinum_230
- Track 7 : Yaboi_226, Sollertia_222, Stanimal_221, BoomerJR_220, Genie2_220
- Track 8 : Tomas_220
- Track 9 : Francob_147, Gilson_149, Phredrick_148, Kenrey_151
- Track 10 : Comrade_141, Stigma_142
- Track 11 : Blueeyedbeauty_140
- Track 12 : Emma1919_149
- Track 13 : Westy_146
- Track 14 : TunaTartare_144
- Track 15 : Muntaha_179, Wakanda_177

Summary of Final Annotations (See graph section above for start numbers):

The start number called the most often in the published annotations is 11, it was called in 26 of the 33 non-draft genes in the pham.

Genes that call this "Most Annotated" start:

- Anedea_222, BlueOtter_206, BoomerJR_220, Cross_207, Cursive_210, Emma1919_149, Francob_147, Genie2_220, Gilson_149, HangryHippo_206, Kenrey_151, Liandry_208, LukeCage_226, Lululemon_205, PacManQ_205, Phredrick_148, PinkiePie_208, Samisti12_212, Sollertia_222, Squillium_211, Stanimal_221, StarPlatinum_230, Sushi23_208, Tomas_220, Watermoore_207, Yaboi_226,

Genes that have the "Most Annotated" start but do not call it:

- Blueeyedbeauty_140, Paradiddles_200, TunaTartare_144,

Genes that do not have the "Most Annotated" start:

- Comrade_141, Muntaha_179, Stigma_142, Wakanda_177, Westy_146,

Summary by start number:

Start 2:

- Found in 1 of 34 (2.9%) of genes in pham
- Manual Annotations of this start: 1 of 33
- Called 100.0% of time when present
- Phage (with cluster) where this start called: Blueeyedbeauty_140 (BK1),

Start 5:

- Found in 3 of 34 (8.8%) of genes in pham
- No Manual Annotations of this start.
- Called 33.3% of time when present
- Phage (with cluster) where this start called: Westy_146 (BK1),

Start 7:

- Found in 1 of 34 (2.9%) of genes in pham
- Manual Annotations of this start: 1 of 33
- Called 100.0% of time when present
- Phage (with cluster) where this start called: TunaTartare_144 (BK1),

Start 10:

- Found in 5 of 34 (14.7%) of genes in pham
- Manual Annotations of this start: 4 of 33
- Called 80.0% of time when present
- Phage (with cluster) where this start called: Comrade_141 (BK1), Muntaha_179 (BK2), Stigma_142 (BK1), Wakanda_177 (BK2),

Start 11:

- Found in 29 of 34 (85.3%) of genes in pham
- Manual Annotations of this start: 26 of 33
- Called 89.7% of time when present
- Phage (with cluster) where this start called: Anedea_222 (BE1), BlueOtter_206 (BE1), BoomerJR_220 (BE2), Cross_207 (BE1), Cursive_210 (BE1), Emma1919_149 (BK1), Francob_147 (BK1), Genie2_220 (BE2), Gilson_149 (BK1), HangryHippo_206 (BE1), Kenrey_151 (BK1), Liandry_208 (BE1), LukeCage_226 (BE2), Lululemon_205 (BE1), PacManQ_205 (BE1), Phredrick_148 (BK1), PinkiePie_208 (BE1), Samisti12_212 (BE1), Sollertia_222 (BE2), Squillium_211 (BE1), Stanimal_221 (BE2), StarPlatinum_230 (BE2), Sushi23_208 (BE1), Tomas_220 (BE2), Watermoore_207 (BE1), Yaboi_226 (BE2),

Start 13:

- Found in 7 of 34 (20.6%) of genes in pham
- Manual Annotations of this start: 1 of 33
- Called 14.3% of time when present
- Phage (with cluster) where this start called: Paradiddles_200 (BE1),

Summary by clusters:

There are 4 clusters represented in this pham: BE2, BE1, BK1, BK2,

Info for manual annotations of cluster BE1:

- Start number 11 was manually annotated 13 times for cluster BE1.
- Start number 13 was manually annotated 1 time for cluster BE1.

Info for manual annotations of cluster BE2:

- Start number 11 was manually annotated 8 times for cluster BE2.

Info for manual annotations of cluster BK1:

- Start number 2 was manually annotated 1 time for cluster BK1.
- Start number 7 was manually annotated 1 time for cluster BK1.
- Start number 10 was manually annotated 2 times for cluster BK1.
- Start number 11 was manually annotated 5 times for cluster BK1.

Info for manual annotations of cluster BK2:

- Start number 10 was manually annotated 2 times for cluster BK2.

Gene Information:

Gene: Anedea_222 Start: 107754, Stop: 108062, Start Num: 11

Candidate Starts for Anedea_222:

(9, 107739), (Start: 11 @107754 has 26 MA's), (15, 107832), (20, 107949), (21, 107955), (23, 107964), (24, 107985), (27, 107994),

Gene: BlueOtter_206 Start: 105525, Stop: 105833, Start Num: 11

Candidate Starts for BlueOtter_206:

(Start: 11 @105525 has 26 MA's), (14, 105597), (15, 105603), (17, 105621), (20, 105720), (27, 105765),

Gene: Blueeyedbeauty_140 Start: 79745, Stop: 80158, Start Num: 2

Candidate Starts for Blueeyedbeauty_140:

(1, 79730), (Start: 2 @79745 has 1 MA's), (3, 79748), (4, 79751), (6, 79805), (Start: 11 @79853 has 26 MA's), (15, 79931), (19, 80027), (20, 80048), (24, 80084),

Gene: BoomerJR_220 Start: 107155, Stop: 107448, Start Num: 11

Candidate Starts for BoomerJR_220:

(Start: 11 @107155 has 26 MA's), (16, 107236), (18, 107290), (20, 107350), (21, 107356), (23, 107365),

Gene: Comrade_141 Start: 82061, Stop: 82372, Start Num: 10

Candidate Starts for Comrade_141:

(5, 81992), (8, 82046), (Start: 10 @82061 has 4 MA's), (Start: 13 @82121 has 1 MA's), (15, 82148), (19, 82244), (20, 82265),

Gene: Cross_207 Start: 106170, Stop: 106478, Start Num: 11

Candidate Starts for Cross_207:

(Start: 11 @106170 has 26 MA's), (14, 106242), (15, 106248), (17, 106266), (20, 106365), (27, 106410),

Gene: Cursive_210 Start: 105854, Stop: 106162, Start Num: 11

Candidate Starts for Cursive_210:

(Start: 11 @105854 has 26 MA's), (14, 105926), (15, 105932), (17, 105950), (20, 106049), (27, 106094),

Gene: Emma1919_149 Start: 82062, Stop: 82367, Start Num: 11

Candidate Starts for Emma1919_149:

(6, 82014), (Start: 11 @82062 has 26 MA's), (15, 82140), (19, 82236), (20, 82257),

Gene: Francob_147 Start: 82570, Stop: 82881, Start Num: 11

Candidate Starts for Francob_147:

(6, 82522), (Start: 11 @82570 has 26 MA's), (12, 82576), (15, 82648), (19, 82744), (20, 82765),

Gene: Genie2_220 Start: 107280, Stop: 107573, Start Num: 11

Candidate Starts for Genie2_220:

(Start: 11 @107280 has 26 MA's), (16, 107361), (18, 107415), (20, 107475), (21, 107481), (23, 107490),

Gene: Gilson_149 Start: 82024, Stop: 82329, Start Num: 11

Candidate Starts for Gilson_149:

(6, 81976), (Start: 11 @82024 has 26 MA's), (12, 82030), (15, 82102), (19, 82198), (20, 82219),

Gene: HangryHippo_206 Start: 105525, Stop: 105833, Start Num: 11

Candidate Starts for HangryHippo_206:

(Start: 11 @105525 has 26 MA's), (14, 105597), (15, 105603), (17, 105621), (20, 105720), (27, 105765),

Gene: Kenrey_151 Start: 83184, Stop: 83495, Start Num: 11

Candidate Starts for Kenrey_151:

(6, 83136), (Start: 11 @83184 has 26 MA's), (12, 83190), (15, 83262), (19, 83358), (20, 83379),

Gene: Liandry_208 Start: 105631, Stop: 105939, Start Num: 11

Candidate Starts for Liandry_208:

(Start: 11 @105631 has 26 MA's), (Start: 13 @105682 has 1 MA's), (20, 105826), (22, 105838), (24, 105862), (27, 105871),

Gene: LukeCage_226 Start: 109136, Stop: 109429, Start Num: 11

Candidate Starts for LukeCage_226:

(Start: 11 @109136 has 26 MA's), (16, 109217), (18, 109271), (20, 109331), (25, 109370), (26, 109373),

Gene: Lululemon_205 Start: 104906, Stop: 105214, Start Num: 11

Candidate Starts for Lululemon_205:

(Start: 11 @104906 has 26 MA's), (14, 104978), (15, 104984), (17, 105002), (20, 105101), (27, 105146),

Gene: Muntaha_179 Start: 92605, Stop: 92913, Start Num: 10

Candidate Starts for Muntaha_179:

(Start: 10 @92605 has 4 MA's), (19, 92788), (20, 92809),

Gene: PacManQ_205 Start: 104906, Stop: 105214, Start Num: 11

Candidate Starts for PacManQ_205:

(Start: 11 @104906 has 26 MA's), (14, 104978), (15, 104984), (17, 105002), (20, 105101), (27, 105146),

Gene: Paradiddles_200 Start: 106869, Stop: 107126, Start Num: 13

Candidate Starts for Paradiddles_200:

(Start: 11 @106818 has 26 MA's), (Start: 13 @106869 has 1 MA's), (20, 107013), (22, 107025), (24, 107049), (27, 107058),

Gene: Phredrick_148 Start: 81519, Stop: 81830, Start Num: 11

Candidate Starts for Phredrick_148:

(6, 81471), (Start: 11 @81519 has 26 MA's), (12, 81525), (15, 81597), (19, 81693), (20, 81714),

Gene: PinkiePie_208 Start: 105631, Stop: 105939, Start Num: 11

Candidate Starts for PinkiePie_208:

(Start: 11 @105631 has 26 MA's), (Start: 13 @105682 has 1 MA's), (20, 105826), (22, 105838), (24, 105862), (27, 105871),

Gene: Samisti12_212 Start: 107816, Stop: 108124, Start Num: 11

Candidate Starts for Samisti12_212:

(Start: 11 @107816 has 26 MA's), (14, 107888), (15, 107894), (17, 107912), (20, 108011), (27, 108056),

Gene: Sollertia_222 Start: 107269, Stop: 107562, Start Num: 11

Candidate Starts for Sollertia_222:

(Start: 11 @107269 has 26 MA's), (16, 107350), (18, 107404), (20, 107464), (21, 107470), (23, 107479),

Gene: Squillium_211 Start: 105633, Stop: 105941, Start Num: 11

Candidate Starts for Squillium_211:

(Start: 11 @105633 has 26 MA's), (Start: 13 @105684 has 1 MA's), (20, 105828), (22, 105840), (24, 105864), (27, 105873),

Gene: Stanimal_221 Start: 107641, Stop: 107934, Start Num: 11

Candidate Starts for Stanimal_221:

(Start: 11 @107641 has 26 MA's), (16, 107722), (18, 107776), (20, 107836), (21, 107842), (23, 107851),

Gene: StarPlatinum_230 Start: 109367, Stop: 109660, Start Num: 11

Candidate Starts for StarPlatinum_230:

(Start: 11 @109367 has 26 MA's), (16, 109448), (18, 109502), (20, 109562), (25, 109601),

Gene: Stigma_142 Start: 82506, Stop: 82817, Start Num: 10

Candidate Starts for Stigma_142:

(5, 82437), (8, 82491), (Start: 10 @82506 has 4 MA's), (Start: 13 @82566 has 1 MA's), (15, 82593), (19, 82689), (20, 82710),

Gene: Sushi23_208 Start: 106826, Stop: 107134, Start Num: 11

Candidate Starts for Sushi23_208:

(Start: 11 @106826 has 26 MA's), (14, 106898), (15, 106904), (17, 106922), (20, 107021), (27, 107066),

Gene: Tomas_220 Start: 107653, Stop: 107946, Start Num: 11

Candidate Starts for Tomas_220:

(Start: 11 @107653 has 26 MA's), (20, 107848),

Gene: TunaTartare_144 Start: 84201, Stop: 84557, Start Num: 7

Candidate Starts for TunaTartare_144:

(Start: 7 @84201 has 1 MA's), (Start: 11 @84243 has 26 MA's), (15, 84321), (17, 84339), (20, 84438),

Gene: Wakanda_177 Start: 92285, Stop: 92593, Start Num: 10

Candidate Starts for Wakanda_177:

(Start: 10 @92285 has 4 MA's), (19, 92468), (20, 92489),

Gene: Watermoore_207 Start: 107168, Stop: 107476, Start Num: 11

Candidate Starts for Watermoore_207:

(Start: 11 @107168 has 26 MA's), (14, 107240), (15, 107246), (17, 107264), (20, 107363), (27, 107408),

Gene: Westy_146 Start: 83326, Stop: 83715, Start Num: 5

Candidate Starts for Westy_146:

(5, 83326), (8, 83380), (Start: 10 @83395 has 4 MA's), (Start: 13 @83455 has 1 MA's), (15, 83482), (19, 83578), (20, 83599),

Gene: Yaboi_226 Start: 107204, Stop: 107497, Start Num: 11

Candidate Starts for Yaboi_226:

(Start: 11 @107204 has 26 MA's), (16, 107285), (18, 107339), (20, 107399), (21, 107405), (23, 107414),