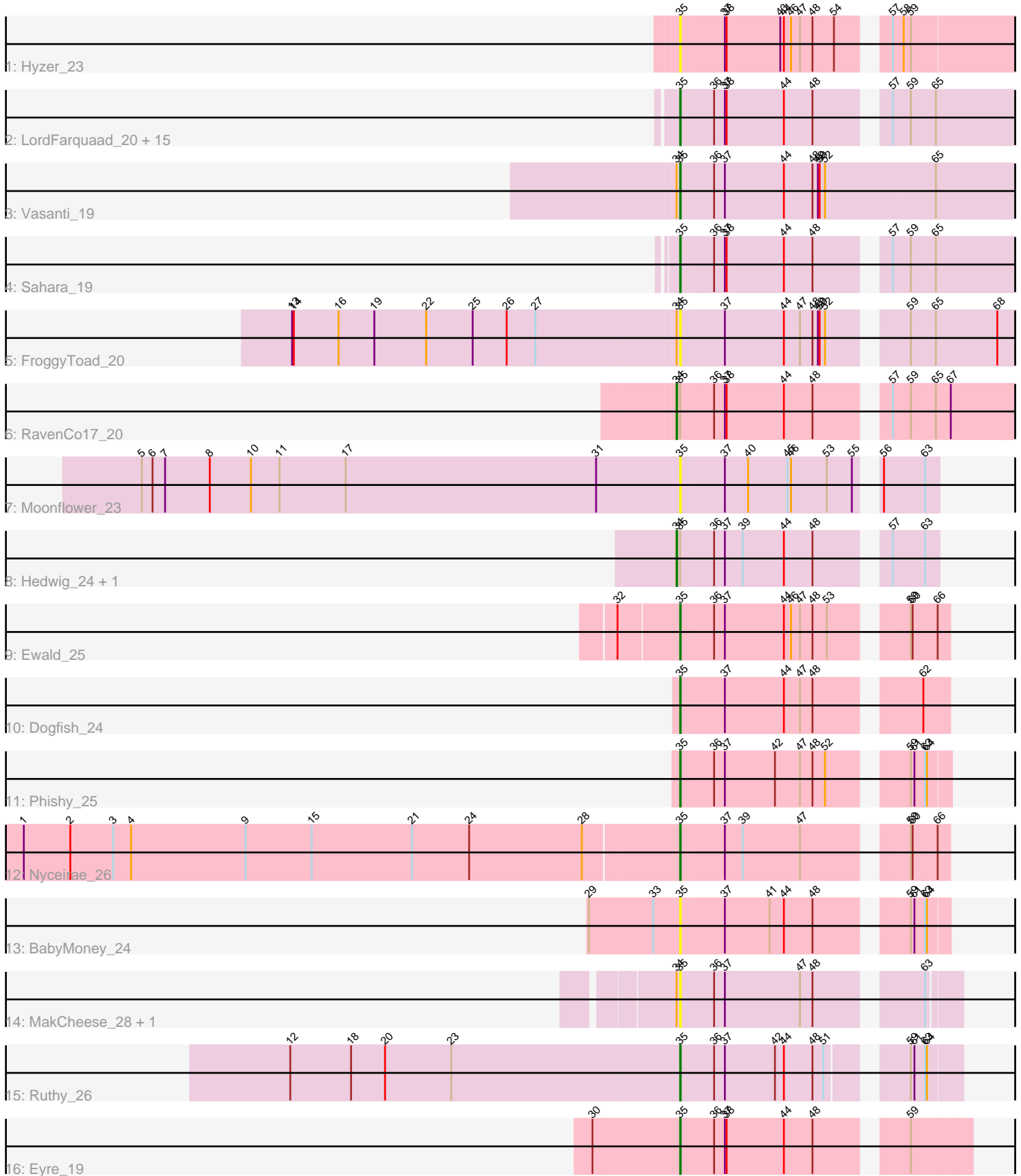


Pham 218158



Note: Tracks are now grouped by subcluster and scaled. Switching in subcluster is indicated by changes in track color. Track scale is now set by default to display the region 30 bp upstream of start 1 to 30 bp downstream of the last possible start. If this default region is judged to be packed too tightly with annotated starts, the track will be further scaled to only show that region of the ORF with annotated starts. This action will be indicated by adding "Zoomed" to the title. For starts, yellow indicates the location of called starts comprised solely of Glimmer/GeneMark auto-annotations, green indicates the location of called starts with at least 1 manual gene annotation.

Pham 218158 Report

This analysis was run 03/28/25 on database version 593.

Pham number 218158 has 33 members, 6 are drafts.

Phages represented in each track:

- Track 1 : Hyzer_23
- Track 2 : LordFarquaad_20, Ebert_20, Gizermo_20, Sproutie_20, Yeet412_20, Attis_20, Bjaner7_20, Mocha12_20, Clap_20, Savage_20, SoilAssassin_20, Whiteclaw_20, Haley23_20, GemG_20, Cynthia_20, TuertoX_20
- Track 3 : Vasanti_19
- Track 4 : Sahara_19
- Track 5 : FroggyToad_20
- Track 6 : RavenCo17_20
- Track 7 : Moonflower_23
- Track 8 : Hedwig_24, DirtyBoi_24
- Track 9 : Ewald_25
- Track 10 : Dogfish_24
- Track 11 : Phishy_25
- Track 12 : Nyceirae_26
- Track 13 : BabyMoney_24
- Track 14 : MakCheese_28, Zodiariah_26
- Track 15 : Ruthy_26
- Track 16 : Eyre_19

Summary of Final Annotations (See graph section above for start numbers):

The start number called the most often in the published annotations is 35, it was called in 24 of the 27 non-draft genes in the pham.

Genes that call this "Most Annotated" start:

- Attis_20, BabyMoney_24, Bjaner7_20, Clap_20, Cynthia_20, Dogfish_24, Ebert_20, Ewald_25, Eyre_19, FroggyToad_20, GemG_20, Gizermo_20, Haley23_20, Hyzer_23, LordFarquaad_20, MakCheese_28, Mocha12_20, Moonflower_23, Nyceirae_26, Phishy_25, Ruthy_26, Sahara_19, Savage_20, SoilAssassin_20, Sproutie_20, TuertoX_20, Vasanti_19, Whiteclaw_20, Yeet412_20, Zodiariah_26,

Genes that have the "Most Annotated" start but do not call it:

- DirtyBoi_24, Hedwig_24, RavenCo17_20,

Genes that do not have the "Most Annotated" start:

-

Summary by start number:

Start 34:

- Found in 7 of 33 (21.2%) of genes in pham
- Manual Annotations of this start: 3 of 27
- Called 42.9% of time when present
- Phage (with cluster) where this start called: DirtyBoi_24 (DB), Hedwig_24 (DB), RavenCo17_20 (CZ8),

Start 35:

- Found in 33 of 33 (100.0%) of genes in pham
- Manual Annotations of this start: 24 of 27
- Called 90.9% of time when present
- Phage (with cluster) where this start called: Attis_20 (CZ2), BabyMoney_24 (DT), Bjanese7_20 (CZ2), Clap_20 (CZ2), Cynthia_20 (CZ2), Dogfish_24 (DT), Ebert_20 (CZ2), Ewald_25 (DT), Eyre_19 (singleton), FroggyToad_20 (CZ2), GemG_20 (CZ2), Gizermo_20 (CZ2), Haley23_20 (CZ2), Hyzer_23 (CZ1), LordFarquaad_20 (CZ2), MakCheese_28 (DW), Mocha12_20 (CZ2), Moonflower_23 (DB), Nyceirae_26 (DT), Phishy_25 (DT), Ruthy_26 (DW), Sahara_19 (CZ2), Savage_20 (CZ2), SoilAssassin_20 (CZ2), Sproutie_20 (CZ2), TuertoX_20 (CZ2), Vasanti_19 (CZ2), Whiteclaw_20 (CZ2), Yeet412_20 (CZ2), Zodiariah_26 (DW),

Summary by clusters:

There are 7 clusters represented in this pham: singleton, CZ2, CZ1, DB, CZ8, DW, DT,

Info for manual annotations of cluster CZ2:

- Start number 35 was manually annotated 18 times for cluster CZ2.

Info for manual annotations of cluster CZ8:

- Start number 34 was manually annotated 1 time for cluster CZ8.

Info for manual annotations of cluster DB:

- Start number 34 was manually annotated 2 times for cluster DB.

Info for manual annotations of cluster DT:

- Start number 35 was manually annotated 4 times for cluster DT.

Info for manual annotations of cluster DW:

- Start number 35 was manually annotated 1 time for cluster DW.

Gene Information:

Gene: Attis_20 Start: 18033, Stop: 18548, Start Num: 35

Candidate Starts for Attis_20:

(Start: 35 @18033 has 24 MA's), (36, 18087), (37, 18105), (38, 18108), (44, 18204), (48, 18252), (57, 18351), (59, 18378), (65, 18420),

Gene: BabyMoney_24 Start: 21065, Stop: 21469, Start Num: 35

Candidate Starts for BabyMoney_24:

(29, 20915), (33, 21020), (Start: 35 @21065 has 24 MA's), (37, 21137), (41, 21212), (44, 21236), (48, 21284), (59, 21410), (61, 21416), (63, 21431), (64, 21434),

Gene: Bjaner7_20 Start: 18033, Stop: 18548, Start Num: 35

Candidate Starts for Bjaner7_20:

(Start: 35 @18033 has 24 MA's), (36, 18087), (37, 18105), (38, 18108), (44, 18204), (48, 18252), (57, 18351), (59, 18378), (65, 18420),

Gene: Clap_20 Start: 18040, Stop: 18555, Start Num: 35

Candidate Starts for Clap_20:

(Start: 35 @18040 has 24 MA's), (36, 18094), (37, 18112), (38, 18115), (44, 18211), (48, 18259), (57, 18358), (59, 18385), (65, 18427),

Gene: Cynthia_20 Start: 18040, Stop: 18555, Start Num: 35

Candidate Starts for Cynthia_20:

(Start: 35 @18040 has 24 MA's), (36, 18094), (37, 18112), (38, 18115), (44, 18211), (48, 18259), (57, 18358), (59, 18385), (65, 18427),

Gene: DirtyBoi_24 Start: 20800, Stop: 21198, Start Num: 34

Candidate Starts for DirtyBoi_24:

(Start: 34 @20800 has 3 MA's), (Start: 35 @20806 has 24 MA's), (36, 20860), (37, 20878), (39, 20908), (44, 20977), (48, 21025), (57, 21124), (63, 21175),

Gene: Dogfish_24 Start: 21281, Stop: 21691, Start Num: 35

Candidate Starts for Dogfish_24:

(Start: 35 @21281 has 24 MA's), (37, 21353), (44, 21452), (47, 21479), (48, 21500), (62, 21647),

Gene: Ebert_20 Start: 18040, Stop: 18555, Start Num: 35

Candidate Starts for Ebert_20:

(Start: 35 @18040 has 24 MA's), (36, 18094), (37, 18112), (38, 18115), (44, 18211), (48, 18259), (57, 18358), (59, 18385), (65, 18427),

Gene: Ewald_25 Start: 21640, Stop: 22050, Start Num: 35

Candidate Starts for Ewald_25:

(32, 21550), (Start: 35 @21640 has 24 MA's), (36, 21694), (37, 21712), (44, 21811), (46, 21823), (47, 21838), (48, 21859), (53, 21883), (59, 21985), (60, 21988), (66, 22030),

Gene: Eyre_19 Start: 18287, Stop: 18730, Start Num: 35

Candidate Starts for Eyre_19:

(30, 18146), (Start: 35 @18287 has 24 MA's), (36, 18341), (37, 18359), (38, 18362), (44, 18458), (48, 18506), (59, 18632),

Gene: FroggyToad_20 Start: 18087, Stop: 18620, Start Num: 35

Candidate Starts for FroggyToad_20:

(13, 17448), (14, 17451), (16, 17526), (19, 17586), (22, 17673), (25, 17751), (26, 17808), (27, 17856), (Start: 34 @18081 has 3 MA's), (Start: 35 @18087 has 24 MA's), (37, 18159), (44, 18258), (47, 18285), (48, 18306), (49, 18315), (50, 18318), (52, 18327), (59, 18432), (65, 18474), (68, 18576),

Gene: GemG_20 Start: 18040, Stop: 18555, Start Num: 35

Candidate Starts for GemG_20:

(Start: 35 @18040 has 24 MA's), (36, 18094), (37, 18112), (38, 18115), (44, 18211), (48, 18259), (57, 18358), (59, 18385), (65, 18427),

Gene: Gizermo_20 Start: 18040, Stop: 18555, Start Num: 35

Candidate Starts for Gizermo_20:

(Start: 35 @18040 has 24 MA's), (36, 18094), (37, 18112), (38, 18115), (44, 18211), (48, 18259), (57, 18358), (59, 18385), (65, 18427),

Gene: Haley23_20 Start: 18040, Stop: 18555, Start Num: 35

Candidate Starts for Haley23_20:

(Start: 35 @18040 has 24 MA's), (36, 18094), (37, 18112), (38, 18115), (44, 18211), (48, 18259), (57, 18358), (59, 18385), (65, 18427),

Gene: Hedwig_24 Start: 20796, Stop: 21194, Start Num: 34

Candidate Starts for Hedwig_24:

(Start: 34 @20796 has 3 MA's), (Start: 35 @20802 has 24 MA's), (36, 20856), (37, 20874), (39, 20904), (44, 20973), (48, 21021), (57, 21120), (63, 21171),

Gene: Hyzer_23 Start: 21496, Stop: 22044, Start Num: 35

Candidate Starts for Hyzer_23:

(Start: 35 @21496 has 24 MA's), (37, 21568), (38, 21571), (43, 21661), (44, 21667), (46, 21679), (47, 21694), (48, 21715), (54, 21751), (57, 21814), (58, 21829), (59, 21841),

Gene: LordFarquaad_20 Start: 18033, Stop: 18548, Start Num: 35

Candidate Starts for LordFarquaad_20:

(Start: 35 @18033 has 24 MA's), (36, 18087), (37, 18105), (38, 18108), (44, 18204), (48, 18252), (57, 18351), (59, 18378), (65, 18420),

Gene: MakCheese_28 Start: 24630, Stop: 25049, Start Num: 35

Candidate Starts for MakCheese_28:

(Start: 34 @24624 has 3 MA's), (Start: 35 @24630 has 24 MA's), (36, 24684), (37, 24702), (47, 24828), (48, 24849), (63, 24996),

Gene: Mocha12_20 Start: 18040, Stop: 18555, Start Num: 35

Candidate Starts for Mocha12_20:

(Start: 35 @18040 has 24 MA's), (36, 18094), (37, 18112), (38, 18115), (44, 18211), (48, 18259), (57, 18358), (59, 18385), (65, 18427),

Gene: Moonflower_23 Start: 20897, Stop: 21292, Start Num: 35

Candidate Starts for Moonflower_23:

(5, 19994), (6, 20012), (7, 20033), (8, 20108), (10, 20177), (11, 20225), (17, 20336), (31, 20756), (Start: 35 @20897 has 24 MA's), (37, 20969), (40, 21008), (45, 21074), (46, 21080), (53, 21140), (55, 21182), (56, 21200), (63, 21269),

Gene: Nyceirae_26 Start: 21873, Stop: 22283, Start Num: 35

Candidate Starts for Nyceirae_26:

(1, 20781), (2, 20859), (3, 20931), (4, 20961), (9, 21153), (15, 21264), (21, 21432), (24, 21528), (28, 21717), (Start: 35 @21873 has 24 MA's), (37, 21945), (39, 21975), (47, 22071), (59, 22218), (60, 22221), (66, 22263),

Gene: Phishy_25 Start: 21878, Stop: 22282, Start Num: 35

Candidate Starts for Phishy_25:

(Start: 35 @21878 has 24 MA's), (36, 21932), (37, 21950), (42, 22034), (47, 22076), (48, 22097), (52, 22118), (59, 22223), (61, 22229), (63, 22244), (64, 22247),

Gene: RavenCo17_20 Start: 18926, Stop: 19447, Start Num: 34

Candidate Starts for RavenCo17_20:

(Start: 34 @18926 has 3 MA's), (Start: 35 @18932 has 24 MA's), (36, 18986), (37, 19004), (38, 19007), (44, 19103), (48, 19151), (57, 19250), (59, 19277), (65, 19319), (67, 19343),

Gene: Ruthy_26 Start: 23308, Stop: 23727, Start Num: 35

Candidate Starts for Ruthy_26:

(12, 22657), (18, 22759), (20, 22816), (23, 22927), (Start: 35 @23308 has 24 MA's), (36, 23362), (37, 23380), (42, 23464), (44, 23479), (48, 23527), (51, 23545), (59, 23647), (61, 23653), (63, 23668), (64, 23671),

Gene: Sahara_19 Start: 17712, Stop: 18227, Start Num: 35

Candidate Starts for Sahara_19:

(Start: 35 @17712 has 24 MA's), (36, 17766), (37, 17784), (38, 17787), (44, 17883), (48, 17931), (57, 18030), (59, 18057), (65, 18099),

Gene: Savage_20 Start: 18040, Stop: 18555, Start Num: 35

Candidate Starts for Savage_20:

(Start: 35 @18040 has 24 MA's), (36, 18094), (37, 18112), (38, 18115), (44, 18211), (48, 18259), (57, 18358), (59, 18385), (65, 18427),

Gene: SoilAssassin_20 Start: 18033, Stop: 18548, Start Num: 35

Candidate Starts for SoilAssassin_20:

(Start: 35 @18033 has 24 MA's), (36, 18087), (37, 18105), (38, 18108), (44, 18204), (48, 18252), (57, 18351), (59, 18378), (65, 18420),

Gene: Sproutie_20 Start: 18040, Stop: 18555, Start Num: 35

Candidate Starts for Sproutie_20:

(Start: 35 @18040 has 24 MA's), (36, 18094), (37, 18112), (38, 18115), (44, 18211), (48, 18259), (57, 18358), (59, 18385), (65, 18427),

Gene: TuertoX_20 Start: 18040, Stop: 18555, Start Num: 35

Candidate Starts for TuertoX_20:

(Start: 35 @18040 has 24 MA's), (36, 18094), (37, 18112), (38, 18115), (44, 18211), (48, 18259), (57, 18358), (59, 18385), (65, 18427),

Gene: Vasanti_19 Start: 17555, Stop: 18109, Start Num: 35

Candidate Starts for Vasanti_19:

(Start: 34 @17549 has 3 MA's), (Start: 35 @17555 has 24 MA's), (36, 17612), (37, 17630), (44, 17729), (48, 17777), (49, 17786), (50, 17789), (52, 17798), (65, 17981),

Gene: Whiteclaw_20 Start: 18040, Stop: 18555, Start Num: 35

Candidate Starts for Whiteclaw_20:

(Start: 35 @18040 has 24 MA's), (36, 18094), (37, 18112), (38, 18115), (44, 18211), (48, 18259), (57, 18358), (59, 18385), (65, 18427),

Gene: Yeet412_20 Start: 18033, Stop: 18548, Start Num: 35

Candidate Starts for Yeet412_20:

(Start: 35 @18033 has 24 MA's), (36, 18087), (37, 18105), (38, 18108), (44, 18204), (48, 18252), (57, 18351), (59, 18378), (65, 18420),

Gene: Zodiariah_26 Start: 24926, Stop: 25345, Start Num: 35

Candidate Starts for Zodiariah_26:

(Start: 34 @24920 has 3 MA's), (Start: 35 @24926 has 24 MA's), (36, 24980), (37, 24998), (47, 25124), (48, 25145), (63, 25292),