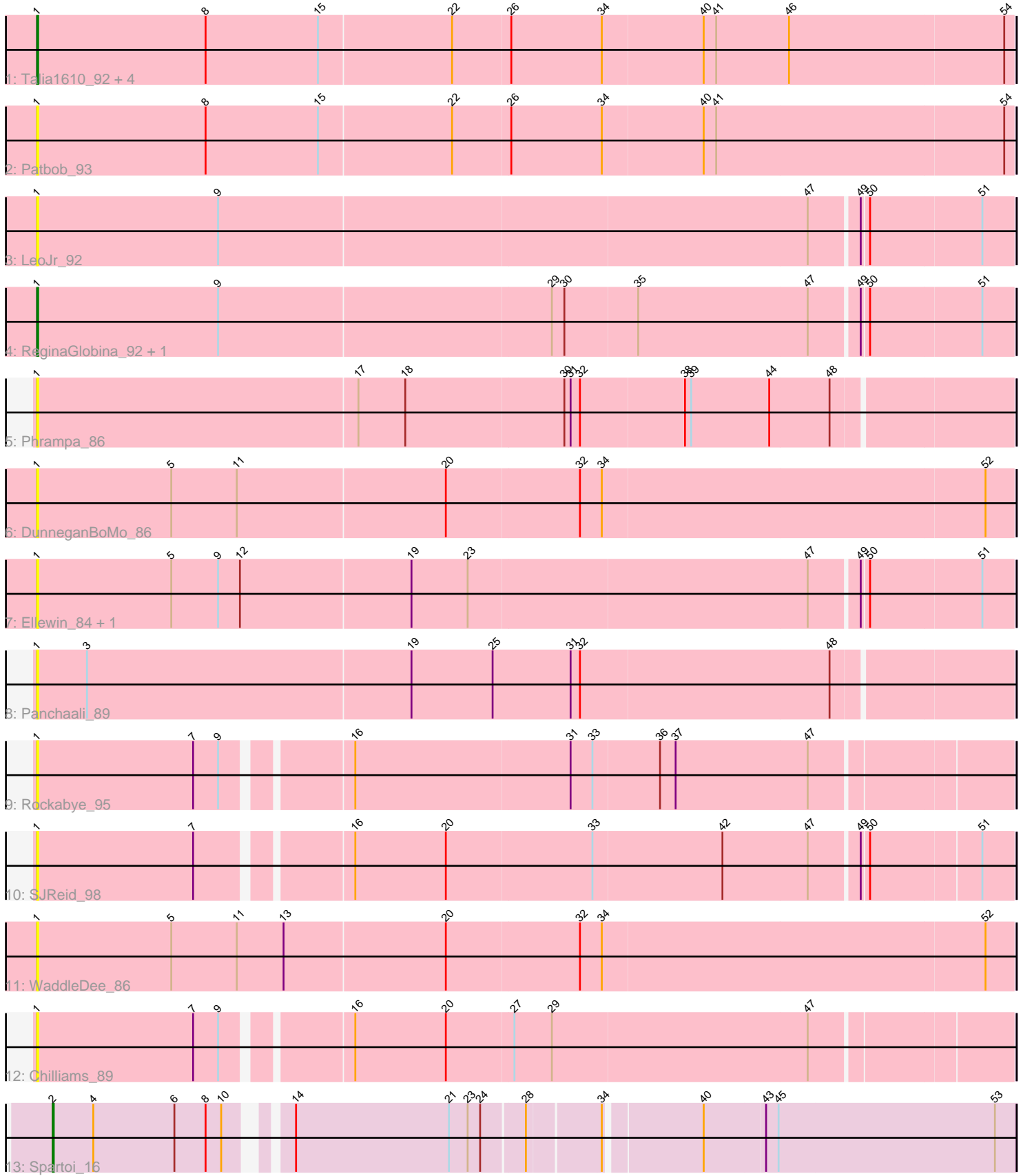


Pham 218330



Note: Tracks are now grouped by subcluster and scaled. Switching in subcluster is indicated by changes in track color. Track scale is now set by default to display the region 30 bp upstream of start 1 to 30 bp downstream of the last possible start. If this default region is judged to be packed too tightly with annotated starts, the track will be further scaled to only show that region of the ORF with annotated starts. This action will be indicated by adding "Zoomed" to the title. For starts, yellow indicates the location of called starts comprised solely of Glimmer/GeneMark auto-annotations, green indicates the location of called starts with at least 1 manual gene annotation.

## Pham 218330 Report

This analysis was run 03/28/25 on database version 593.

Pham number 218330 has 19 members, 14 are drafts.

Phages represented in each track:

- Track 1 : Talia1610\_92, Mimi\_92, Racecar\_93, GoldenEssence\_81, Bloom\_96
- Track 2 : Patbob\_93
- Track 3 : LeoJr\_92
- Track 4 : ReginaGlobina\_92, Atuin\_87
- Track 5 : Phrampa\_86
- Track 6 : DunneganBoMo\_86
- Track 7 : Ellewin\_84, KSunshine22\_87
- Track 8 : Panchaali\_89
- Track 9 : Rockabye\_95
- Track 10 : SJReid\_98
- Track 11 : WaddleDee\_86
- Track 12 : Chilliams\_89
- Track 13 : Spartoi\_16

### ***Summary of Final Annotations (See graph section above for start numbers):***

The start number called the most often in the published annotations is 1, it was called in 4 of the 5 non-draft genes in the pham.

Genes that call this "Most Annotated" start:

- Atuin\_87, Bloom\_96, Chilliams\_89, DunneganBoMo\_86, Ellewin\_84, GoldenEssence\_81, KSunshine22\_87, LeoJr\_92, Mimi\_92, Panchaali\_89, Patbob\_93, Phrampa\_86, Racecar\_93, ReginaGlobina\_92, Rockabye\_95, SJReid\_98, Talia1610\_92, WaddleDee\_86,

Genes that have the "Most Annotated" start but do not call it:

- 

Genes that do not have the "Most Annotated" start:

- Spartoi\_16,

### **Summary by start number:**

Start 1:

- Found in 18 of 19 ( 94.7% ) of genes in pham
- Manual Annotations of this start: 4 of 5
- Called 100.0% of time when present
- Phage (with cluster) where this start called: Atuin\_87 (FC), Bloom\_96 (FC), Chilliams\_89 (FC), DunneganBoMo\_86 (FC), Ellewin\_84 (FC), GoldenEssence\_81 (FC), KSunshine22\_87 (FC), LeoJr\_92 (FC), Mimi\_92 (FC), Panchaali\_89 (FC), Patbob\_93 (FC), Phrampa\_86 (FC), Racecar\_93 (FC), ReginaGlobina\_92 (FC), Rockabye\_95 (FC), SJReid\_98 (FC), Talia1610\_92 (FC), WaddleDee\_86 (FC),

Start 2:

- Found in 1 of 19 ( 5.3% ) of genes in pham
- Manual Annotations of this start: 1 of 5
- Called 100.0% of time when present
- Phage (with cluster) where this start called: Spartoi\_16 (singleton),

### Summary by clusters:

There are 2 clusters represented in this pham: singleton, FC,

Info for manual annotations of cluster FC:

- Start number 1 was manually annotated 4 times for cluster FC.

### Gene Information:

Gene: Atuin\_87 Start: 60814, Stop: 61731, Start Num: 1

Candidate Starts for Atuin\_87:

(Start: 1 @60814 has 4 MA's), (9, 60988), (29, 61303), (30, 61315), (35, 61384), (47, 61546), (49, 61591), (50, 61597), (51, 61702),

Gene: Bloom\_96 Start: 61677, Stop: 62603, Start Num: 1

Candidate Starts for Bloom\_96:

(Start: 1 @61677 has 4 MA's), (8, 61839), (15, 61947), (22, 62073), (26, 62127), (34, 62214), (40, 62310), (41, 62322), (46, 62391), (54, 62595),

Gene: Chilliams\_89 Start: 62104, Stop: 62997, Start Num: 1

Candidate Starts for Chilliams\_89:

(Start: 1 @62104 has 4 MA's), (7, 62254), (9, 62278), (16, 62386), (20, 62473), (27, 62536), (29, 62572), (47, 62815),

Gene: DunneganBoMo\_86 Start: 57671, Stop: 58597, Start Num: 1

Candidate Starts for DunneganBoMo\_86:

(Start: 1 @57671 has 4 MA's), (5, 57800), (11, 57863), (20, 58061), (32, 58187), (34, 58208), (52, 58571),

Gene: Ellewin\_84 Start: 57260, Stop: 58177, Start Num: 1

Candidate Starts for Ellewin\_84:

(Start: 1 @57260 has 4 MA's), (5, 57389), (9, 57434), (12, 57455), (19, 57617), (23, 57671), (47, 57992), (49, 58037), (50, 58043), (51, 58148),

Gene: GoldenEssence\_81 Start: 55473, Stop: 56399, Start Num: 1

Candidate Starts for GoldenEssence\_81:

(Start: 1 @55473 has 4 MA's), (8, 55635), (15, 55743), (22, 55869), (26, 55923), (34, 56010), (40, 56106), (41, 56118), (46, 56187), (54, 56391),

Gene: KSunshine22\_87 Start: 58893, Stop: 59810, Start Num: 1

Candidate Starts for KSunshine22\_87:

(Start: 1 @58893 has 4 MA's), (5, 59022), (9, 59067), (12, 59088), (19, 59250), (23, 59304), (47, 59625), (49, 59670), (50, 59676), (51, 59781),

Gene: LeoJr\_92 Start: 60942, Stop: 61859, Start Num: 1

Candidate Starts for LeoJr\_92:

(Start: 1 @60942 has 4 MA's), (9, 61116), (47, 61674), (49, 61719), (50, 61725), (51, 61830),

Gene: Mimi\_92 Start: 61024, Stop: 61950, Start Num: 1

Candidate Starts for Mimi\_92:

(Start: 1 @61024 has 4 MA's), (8, 61186), (15, 61294), (22, 61420), (26, 61474), (34, 61561), (40, 61657), (41, 61669), (46, 61738), (54, 61942),

Gene: Panchaali\_89 Start: 58770, Stop: 59690, Start Num: 1

Candidate Starts for Panchaali\_89:

(Start: 1 @58770 has 4 MA's), (3, 58818), (19, 59127), (25, 59205), (31, 59280), (32, 59289), (48, 59526),

Gene: Patbob\_93 Start: 61896, Stop: 62822, Start Num: 1

Candidate Starts for Patbob\_93:

(Start: 1 @61896 has 4 MA's), (8, 62058), (15, 62166), (22, 62292), (26, 62346), (34, 62433), (40, 62529), (41, 62541), (54, 62814),

Gene: Phrampa\_86 Start: 59210, Stop: 60127, Start Num: 1

Candidate Starts for Phrampa\_86:

(Start: 1 @59210 has 4 MA's), (17, 59516), (18, 59561), (30, 59711), (31, 59717), (32, 59726), (38, 59825), (39, 59831), (44, 59906), (48, 59963),

Gene: Racecar\_93 Start: 61677, Stop: 62603, Start Num: 1

Candidate Starts for Racecar\_93:

(Start: 1 @61677 has 4 MA's), (8, 61839), (15, 61947), (22, 62073), (26, 62127), (34, 62214), (40, 62310), (41, 62322), (46, 62391), (54, 62595),

Gene: ReginaGlobina\_92 Start: 61695, Stop: 62612, Start Num: 1

Candidate Starts for ReginaGlobina\_92:

(Start: 1 @61695 has 4 MA's), (9, 61869), (29, 62184), (30, 62196), (35, 62265), (47, 62427), (49, 62472), (50, 62478), (51, 62583),

Gene: Rockabye\_95 Start: 62463, Stop: 63356, Start Num: 1

Candidate Starts for Rockabye\_95:

(Start: 1 @62463 has 4 MA's), (7, 62613), (9, 62637), (16, 62745), (31, 62949), (33, 62970), (36, 63033), (37, 63048), (47, 63174),

Gene: SJReid\_98 Start: 61516, Stop: 62409, Start Num: 1

Candidate Starts for SJReid\_98:

(Start: 1 @61516 has 4 MA's), (7, 61666), (16, 61798), (20, 61885), (33, 62023), (42, 62146), (47, 62227), (49, 62272), (50, 62278), (51, 62380),

Gene: Spartoi\_16 Start: 12868, Stop: 13737, Start Num: 2

Candidate Starts for Spartoi\_16:

(Start: 2 @12868 has 1 MA's), (4, 12907), (6, 12985), (8, 13015), (10, 13030), (14, 13072), (21, 13219), (23, 13237), (24, 13249), (28, 13288), (34, 13354), (40, 13441), (43, 13498), (45, 13510), (53, 13717),

Gene: Talia1610\_92 Start: 61042, Stop: 61968, Start Num: 1

Candidate Starts for Talia1610\_92:

(Start: 1 @61042 has 4 MA's), (8, 61204), (15, 61312), (22, 61438), (26, 61492), (34, 61579), (40, 61675), (41, 61687), (46, 61756), (54, 61960),

Gene: WaddleDee\_86 Start: 57526, Stop: 58452, Start Num: 1

Candidate Starts for WaddleDee\_86:

(Start: 1 @57526 has 4 MA's), (5, 57655), (11, 57718), (13, 57763), (20, 57916), (32, 58042), (34, 58063), (52, 58426),