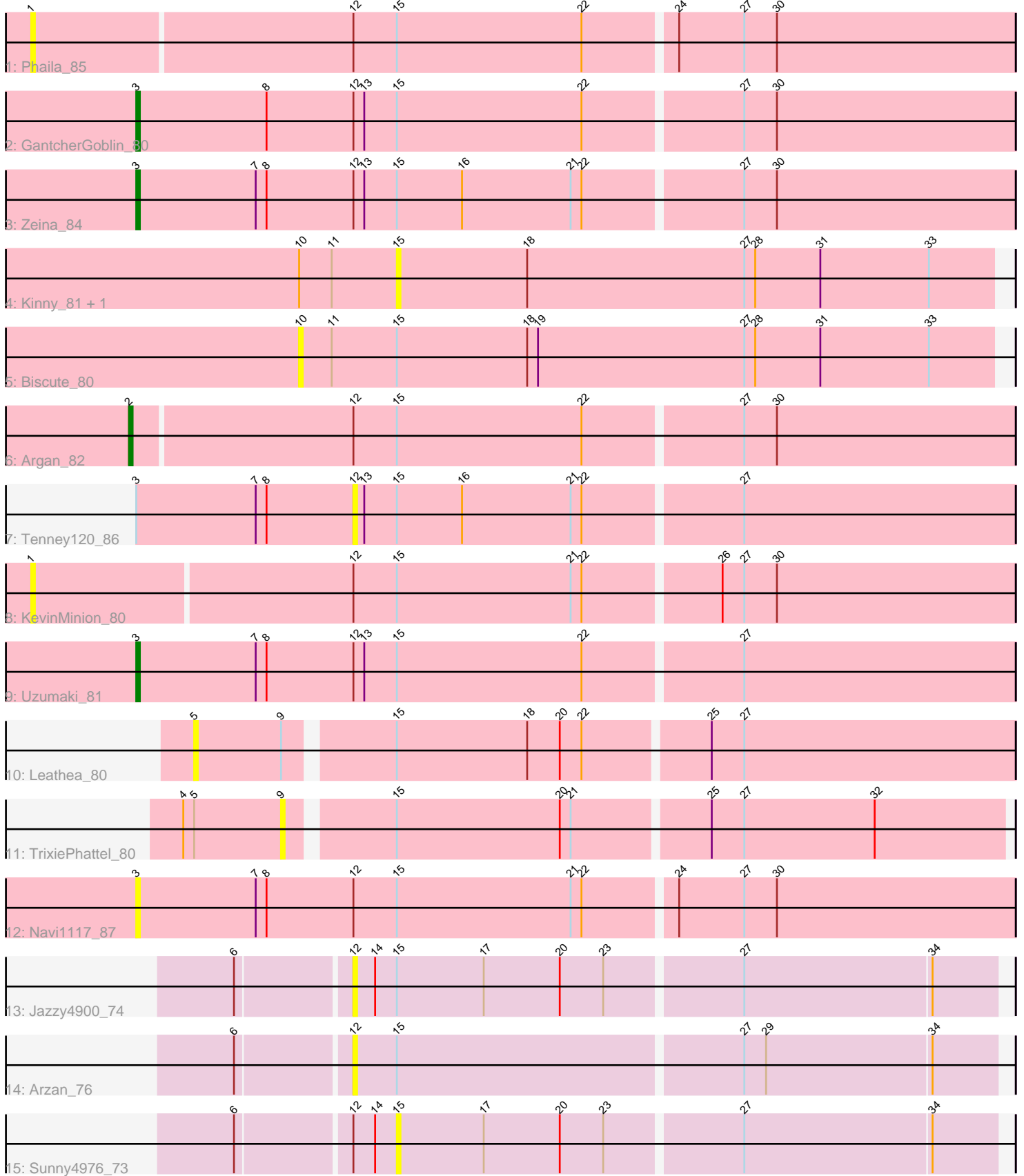


Pham 218395



Note: Tracks are now grouped by subcluster and scaled. Switching in subcluster is indicated by changes in track color. Track scale is now set by default to display the region 30 bp upstream of start 1 to 30 bp downstream of the last possible start. If this default region is judged to be packed too tightly with annotated starts, the track will be further scaled to only show that region of the ORF with annotated starts. This action will be indicated by adding "Zoomed" to the title. For starts, yellow indicates the location of called starts comprised solely of Glimmer/GeneMark auto-annotations, green indicates the location of called starts with at least 1 manual gene annotation.

## Pham 218395 Report

This analysis was run 03/28/25 on database version 593.

Pham number 218395 has 16 members, 12 are drafts.

Phages represented in each track:

- Track 1 : Phaila\_85
- Track 2 : GantcherGoblin\_80
- Track 3 : Zeina\_84
- Track 4 : Kinny\_81, BarbieDoll\_81
- Track 5 : Biscute\_80
- Track 6 : Argan\_82
- Track 7 : Tenney120\_86
- Track 8 : KevinMinion\_80
- Track 9 : Uzumaki\_81
- Track 10 : Leathea\_80
- Track 11 : TrixiePhattel\_80
- Track 12 : Navi1117\_87
- Track 13 : Jazzy4900\_74
- Track 14 : Arzan\_76
- Track 15 : Sunny4976\_73

### ***Summary of Final Annotations (See graph section above for start numbers):***

The start number called the most often in the published annotations is 3, it was called in 3 of the 4 non-draft genes in the pham.

Genes that call this "Most Annotated" start:

- GantcherGoblin\_80, Navi1117\_87, Uzumaki\_81, Zeina\_84,

Genes that have the "Most Annotated" start but do not call it:

- Tenney120\_86,

Genes that do not have the "Most Annotated" start:

- Argan\_82, Arzan\_76, BarbieDoll\_81, Biscute\_80, Jazzy4900\_74, KevinMinion\_80, Kinny\_81, Leathea\_80, Phaila\_85, Sunny4976\_73, TrixiePhattel\_80,

### **Summary by start number:**

Start 1:

- Found in 2 of 16 ( 12.5% ) of genes in pham
- No Manual Annotations of this start.
- Called 100.0% of time when present
- Phage (with cluster) where this start called: KevinMinion\_80 (AU6), Phaila\_85 (AU6),

Start 2:

- Found in 1 of 16 ( 6.2% ) of genes in pham
- Manual Annotations of this start: 1 of 4
- Called 100.0% of time when present
- Phage (with cluster) where this start called: Argan\_82 (AU6),

Start 3:

- Found in 5 of 16 ( 31.2% ) of genes in pham
- Manual Annotations of this start: 3 of 4
- Called 80.0% of time when present
- Phage (with cluster) where this start called: GantcherGoblin\_80 (AU6), Navi11117\_87 (AU6), Uzumaki\_81 (AU6), Zeina\_84 (AU6),

Start 5:

- Found in 2 of 16 ( 12.5% ) of genes in pham
- No Manual Annotations of this start.
- Called 50.0% of time when present
- Phage (with cluster) where this start called: Leathea\_80 (AU6),

Start 9:

- Found in 2 of 16 ( 12.5% ) of genes in pham
- No Manual Annotations of this start.
- Called 50.0% of time when present
- Phage (with cluster) where this start called: TrixiePhattel\_80 (AU6),

Start 10:

- Found in 3 of 16 ( 18.8% ) of genes in pham
- No Manual Annotations of this start.
- Called 33.3% of time when present
- Phage (with cluster) where this start called: Biscute\_80 (AU6),

Start 12:

- Found in 11 of 16 ( 68.8% ) of genes in pham
- No Manual Annotations of this start.
- Called 27.3% of time when present
- Phage (with cluster) where this start called: Arzan\_76 (FI), Jazzy4900\_74 (FI), Tenney120\_86 (AU6),

Start 15:

- Found in 16 of 16 ( 100.0% ) of genes in pham
- No Manual Annotations of this start.
- Called 18.8% of time when present
- Phage (with cluster) where this start called: BarbieDoll\_81 (AU6), Kinny\_81 (AU6), Sunny4976\_73 (FI),

**Summary by clusters:**

There are 2 clusters represented in this pham: FI, AU6,

Info for manual annotations of cluster AU6:

- Start number 2 was manually annotated 1 time for cluster AU6.
- Start number 3 was manually annotated 3 times for cluster AU6.

**Gene Information:**

Gene: Argan\_82 Start: 48814, Stop: 49053, Start Num: 2

Candidate Starts for Argan\_82:

(Start: 2 @48814 has 1 MA's), (12, 48874), (15, 48886), (22, 48937), (27, 48979), (30, 48988),

Gene: Arzan\_76 Start: 48719, Stop: 48892, Start Num: 12

Candidate Starts for Arzan\_76:

(6, 48689), (12, 48719), (15, 48731), (27, 48824), (29, 48830), (34, 48875),

Gene: BarbieDoll\_81 Start: 48704, Stop: 48868, Start Num: 15

Candidate Starts for BarbieDoll\_81:

(10, 48677), (11, 48686), (15, 48704), (18, 48740), (27, 48800), (28, 48803), (31, 48821), (33, 48851),

Gene: Biscute\_80 Start: 48329, Stop: 48520, Start Num: 10

Candidate Starts for Biscute\_80:

(10, 48329), (11, 48338), (15, 48356), (18, 48392), (19, 48395), (27, 48452), (28, 48455), (31, 48473), (33, 48503),

Gene: GantcherGoblin\_80 Start: 48628, Stop: 48867, Start Num: 3

Candidate Starts for GantcherGoblin\_80:

(Start: 3 @48628 has 3 MA's), (8, 48664), (12, 48688), (13, 48691), (15, 48700), (22, 48751), (27, 48793), (30, 48802),

Gene: Jazzy4900\_74 Start: 49554, Stop: 49727, Start Num: 12

Candidate Starts for Jazzy4900\_74:

(6, 49524), (12, 49554), (14, 49560), (15, 49566), (17, 49590), (20, 49611), (23, 49623), (27, 49659), (34, 49710),

Gene: KevinMinion\_80 Start: 49418, Stop: 49684, Start Num: 1

Candidate Starts for KevinMinion\_80:

(1, 49418), (12, 49505), (15, 49517), (21, 49565), (22, 49568), (26, 49604), (27, 49610), (30, 49619),

Gene: Kinny\_81 Start: 49183, Stop: 49347, Start Num: 15

Candidate Starts for Kinny\_81:

(10, 49156), (11, 49165), (15, 49183), (18, 49219), (27, 49279), (28, 49282), (31, 49300), (33, 49330),

Gene: Leathea\_80 Start: 47209, Stop: 47427, Start Num: 5

Candidate Starts for Leathea\_80:

(5, 47209), (9, 47233), (15, 47260), (18, 47296), (20, 47305), (22, 47311), (25, 47344), (27, 47353),

Gene: Navi1117\_87 Start: 50186, Stop: 50425, Start Num: 3

Candidate Starts for Navi1117\_87:

(Start: 3 @50186 has 3 MA's), (7, 50219), (8, 50222), (12, 50246), (15, 50258), (21, 50306), (22, 50309), (24, 50333), (27, 50351), (30, 50360),

Gene: Phaila\_85 Start: 49012, Stop: 49278, Start Num: 1

Candidate Starts for Phaila\_85:

(1, 49012), (12, 49099), (15, 49111), (22, 49162), (24, 49186), (27, 49204), (30, 49213),

Gene: Sunny4976\_73 Start: 49566, Stop: 49727, Start Num: 15

Candidate Starts for Sunny4976\_73:

(6, 49524), (12, 49554), (14, 49560), (15, 49566), (17, 49590), (20, 49611), (23, 49623), (27, 49659), (34, 49710),

Gene: Tenney120\_86 Start: 49737, Stop: 49916, Start Num: 12

Candidate Starts for Tenney120\_86:

(Start: 3 @49677 has 3 MA's), (7, 49710), (8, 49713), (12, 49737), (13, 49740), (15, 49749), (16, 49767), (21, 49797), (22, 49800), (27, 49842),

Gene: TrixiePhattel\_80 Start: 47398, Stop: 47589, Start Num: 9

Candidate Starts for TrixiePhattel\_80:

(4, 47371), (5, 47374), (9, 47398), (15, 47425), (20, 47470), (21, 47473), (25, 47509), (27, 47518), (32, 47554),

Gene: Uzumaki\_81 Start: 48596, Stop: 48835, Start Num: 3

Candidate Starts for Uzumaki\_81:

(Start: 3 @48596 has 3 MA's), (7, 48629), (8, 48632), (12, 48656), (13, 48659), (15, 48668), (22, 48719), (27, 48761),

Gene: Zeina\_84 Start: 48968, Stop: 49207, Start Num: 3

Candidate Starts for Zeina\_84:

(Start: 3 @48968 has 3 MA's), (7, 49001), (8, 49004), (12, 49028), (13, 49031), (15, 49040), (16, 49058), (21, 49088), (22, 49091), (27, 49133), (30, 49142),