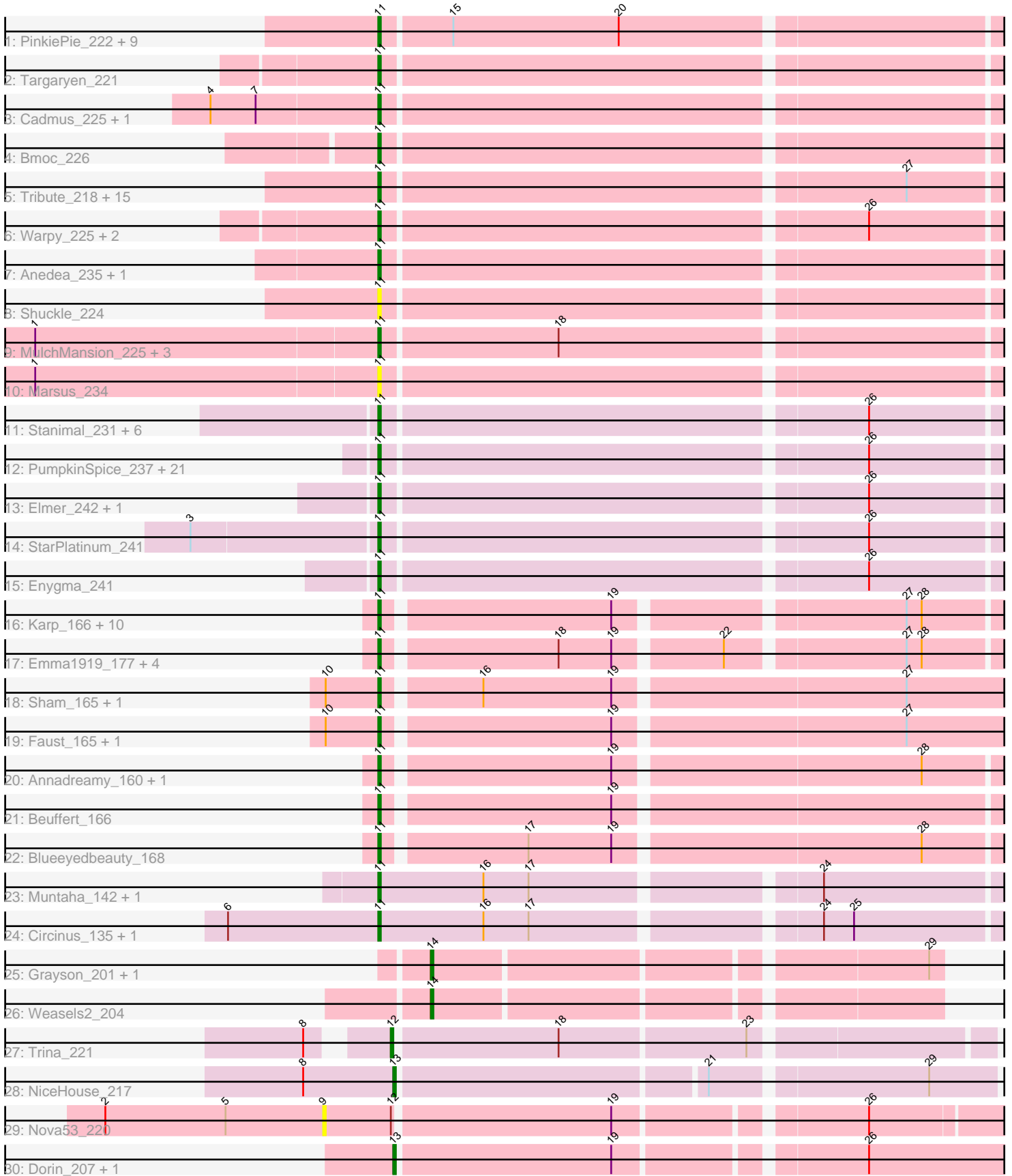


Pham 219574



Note: Tracks are now grouped by subcluster and scaled. Switching in subcluster is indicated by changes in track color. Track scale is now set by default to display the region 30 bp upstream of start 1 to 30 bp downstream of the last possible start. If this default region is judged to be packed too tightly with annotated starts, the track will be further scaled to only show that region of the ORF with annotated starts. This action will be indicated by adding "Zoomed" to the title. For starts, yellow indicates the location of called starts comprised solely of Glimmer/GeneMark auto-annotations, green indicates the location of called starts with at least 1 manual gene annotation.

Pham 219574 Report

This analysis was run 03/28/25 on database version 593.

Pham number 219574 has 110 members, 11 are drafts.

Phages represented in each track:

- Track 1 : PinkiePie_222, Paradiddles_214, Bartholomune_222, Persimmon_225, Braelyn_218, NootNoot_219, Navo_216, WhereRU_221, Liandry_222, Squillium_225
- Track 2 : Targaryen_221
- Track 3 : Cadmus_225, Daubenski_215
- Track 4 : Bmoc_226
- Track 5 : Tribute_218, PacManQ_218, EGole_226, Sushi23_222, Lululemon_218, HangryHippo_220, Teutsch_221, Watermoore_221, BlueOtter_220, Samisti12_226, Leo04_222, Scheme_225, Cross_221, Cursive_224, Pepperwood_222, Larnav_221
- Track 6 : Warpy_225, Evy_212, Jay2Jay_227
- Track 7 : Anedea_235, Riptide_228
- Track 8 : Shuckle_224
- Track 9 : MulchMansion_225, Angela_224, Mildred21_231, LilMartin_221
- Track 10 : Marsus_234
- Track 11 : Stanimal_231, Sollertia_232, BoomerJR_231, Mugiwara_246, Yaboi_236, Genie2_231, LukeCage_237
- Track 12 : PumpkinSpice_237, Tomas_234, MindFlayer_227, Jollison_231, Bordeaux_232, Spilled_241, Wipeout_224, SaltySpittoon_234, Rikishi_242, Spelly_239, Gibbi_242, Amabiko_238, Quarant19_234, Birchlyn_233, Karimac_234, CeilingFan_238, IchabodCrane_228, Battuta_232, TomSawyer_238, KentuckyRacer_240, Starbow_231, JimJam_241
- Track 13 : Elmer_242, Wofford_234
- Track 14 : StarPlatinum_241
- Track 15 : Enygma_241
- Track 16 : Karp_166, Kenrey_179, Comrade_169, Belfort_172, Westy_173, Francob_173, Stigma_170, SparkleGoddess_172, Moab_174, Phredrick_177, Patelgo_175
- Track 17 : Emma1919_177, Jada_175, Forrest_178, Gilson_176, MeganTheeKilla_176
- Track 18 : Sham_165, TunaTartare_172
- Track 19 : Faust_165, SeresaTree_167
- Track 20 : Annadreamy_160, Limpid_167
- Track 21 : Beuffert_166
- Track 22 : Blueeyedbeauty_168
- Track 23 : Muntaha_142, Wakanda_141
- Track 24 : Circinus_135, BillNye_134
- Track 25 : Grayson_201, Peregrin_199
- Track 26 : Weasels2_204

- Track 27 : Trina_221
- Track 28 : NiceHouse_217
- Track 29 : Nova53_220
- Track 30 : Dorin_207, Francesca_208

Summary of Final Annotations (See graph section above for start numbers):

The start number called the most often in the published annotations is 11, it was called in 92 of the 99 non-draft genes in the pham.

Genes that call this "Most Annotated" start:

- Amabiko_238, Anedea_235, Angela_224, Annadreamy_160, Bartholomune_222, Battuta_232, Belfort_172, Beuffert_166, BillNye_134, Birchlyn_233, BlueOtter_220, Blueeyedbeauty_168, Bmoc_226, BoomerJR_231, Bordeaux_232, Braelyn_218, Cadmus_225, CeilingFan_238, Circinus_135, Comrade_169, Cross_221, Cursive_224, Daubenski_215, EGole_226, Elmer_242, Emma1919_177, Enygma_241, Evy_212, Faust_165, Forrest_178, Francob_173, Genie2_231, Gibbi_242, Gilson_176, HangryHippo_220, IchabodCrane_228, Jada_175, Jay2Jay_227, JimJam_241, Jollison_231, Karimac_234, Karp_166, Kenrey_179, KentuckyRacer_240, Larnav_221, Leo04_222, Liandry_222, LilMartin_221, Limpid_167, LukeCage_237, Lululemon_218, Marsus_234, MeganTheeKilla_176, Mildred21_231, MindFlayer_227, Moab_174, Mugiwara_246, MulchMansion_225, Muntaha_142, Navo_216, NootNoot_219, PacManQ_218, Paradiddles_214, Patelgo_175, Pepperwood_222, Persimmon_225, Phredrick_177, PinkiePie_222, PumpkinSpice_237, Quaran19_234, Rikishi_242, Riptide_228, SaltySpittoon_234, Samisti12_226, Scheme_225, SeresaTree_167, Sham_165, Shuckle_224, Sollertia_232, SparkleGoddess_172, Spelly_239, Spilled_241, Squillium_225, Stanimal_231, StarPlatinum_241, Starbow_231, Stigma_170, Sushi23_222, Targaryen_221, Teutsch_221, TomSawyer_238, Tomas_234, Tribute_218, TunaTartare_172, Wakanda_141, Warpy_225, Watermoore_221, Westy_173, WhereRU_221, Wipeout_224, Wofford_234, Yaboi_236,

Genes that have the "Most Annotated" start but do not call it:

-

Genes that do not have the "Most Annotated" start:

- Dorin_207, Francesca_208, Grayson_201, NiceHouse_217, Nova53_220, Peregrin_199, Trina_221, Weasels2_204,

Summary by start number:

Start 9:

- Found in 1 of 110 (0.9%) of genes in pham
- No Manual Annotations of this start.
- Called 100.0% of time when present
- Phage (with cluster) where this start called: Nova53_220 (CG),

Start 11:

- Found in 102 of 110 (92.7%) of genes in pham
- Manual Annotations of this start: 92 of 99

- Called 100.0% of time when present
- Phage (with cluster) where this start called: Amabiko_238 (BE2), Anedea_235 (BE1), Angela_224 (BE1), Annadreamy_160 (BK1), Bartholomune_222 (BE1), Battuta_232 (BE2), Belfort_172 (BK1), Beuffert_166 (BK1), BillNye_134 (BK2), Birchlyn_233 (BE2), BlueOtter_220 (BE1), Blueeyedbeauty_168 (BK1), Bmoc_226 (BE1), BoomerJR_231 (BE2), Bordeaux_232 (BE2), Braelyn_218 (BE1), Cadmus_225 (BE1), CeilingFan_238 (BE2), Circinus_135 (BK2), Comrade_169 (BK1), Cross_221 (BE1), Cursive_224 (BE1), Daubenski_215 (BE1), EGole_226 (BE1), Elmer_242 (BE2), Emma1919_177 (BK1), Enygma_241 (BE2), Evy_212 (BE1), Faust_165 (BK1), Forrest_178 (BK1), Francob_173 (BK1), Genie2_231 (BE2), Gibbi_242 (BE2), Gilson_176 (BK1), HangryHippo_220 (BE1), IchabodCrane_228 (BE2), Jada_175 (BK1), Jay2Jay_227 (BE1), JimJam_241 (BE2), Jollison_231 (BE2), Karimac_234 (BE2), Karp_166 (BK1), Kenrey_179 (BK1), KentuckyRacer_240 (BE2), Larnav_221 (BE1), Leo04_222 (BE1), Liandry_222 (BE1), LilMartin_221 (BE1), Limpid_167 (BK1), LukeCage_237 (BE2), Lululemon_218 (BE1), Marsus_234 (BE1), MeganTheeKilla_176 (BK1), Mildred21_231 (BE1), MindFlayer_227 (BE2), Moab_174 (BK1), Mugiwara_246 (BE2), MulchMansion_225 (BE1), Muntaha_142 (BK2), Navo_216 (BE1), NootNoot_219 (BE1), PacManQ_218 (BE1), Paradiddles_214 (BE1), Patelgo_175 (BK1), Pepperwood_222 (BE1), Persimmon_225 (BE1), Phredrick_177 (BK1), PinkiePie_222 (BE1), PumpkinSpice_237 (BE2), Quarant19_234 (BE2), Rikishi_242 (BE2), Riptide_228 (BE1), SaltySpittoon_234 (BE2), Samisti12_226 (BE1), Scheme_225 (BE1), SeresaTree_167 (BK1), Sham_165 (BK1), Shuckle_224 (BE1), Sollertia_232 (BE2), SparkleGoddess_172 (BK1), Spelly_239 (BE2), Spilled_241 (BE2), Squillium_225 (BE1), Stanimal_231 (BE2), StarPlatinum_241 (BE2), Starbow_231 (BE2), Stigma_170 (BK1), Sushi23_222 (BE1), Targaryen_221 (BE1), Teutsch_221 (BE1), TomSawyer_238 (BE2), Tomas_234 (BE2), Tribute_218 (BE1), TunaTartare_172 (BK1), Wakanda_141 (BK2), Warpy_225 (BE1), Watermoore_221 (BE1), Westy_173 (BK1), WhereRU_221 (BE1), Wipeout_224 (BE2), Wofford_234 (BE2), Yaboi_236 (BE2),

Start 12:

- Found in 2 of 110 (1.8%) of genes in pham
- Manual Annotations of this start: 1 of 99
- Called 50.0% of time when present
- Phage (with cluster) where this start called: Trina_221 (CE),

Start 13:

- Found in 3 of 110 (2.7%) of genes in pham
- Manual Annotations of this start: 3 of 99
- Called 100.0% of time when present
- Phage (with cluster) where this start called: Dorin_207 (CG), Francesca_208 (CG), NiceHouse_217 (CE),

Start 14:

- Found in 3 of 110 (2.7%) of genes in pham
- Manual Annotations of this start: 3 of 99
- Called 100.0% of time when present
- Phage (with cluster) where this start called: Grayson_201 (CB), Peregrin_199 (CB), Weasels2_204 (CB),

Summary by clusters:

There are 7 clusters represented in this pham: CB, CG, CE, BK1, BK2, BE2, BE1,

Info for manual annotations of cluster BE1:

- Start number 11 was manually annotated 36 times for cluster BE1.

Info for manual annotations of cluster BE2:

- Start number 11 was manually annotated 30 times for cluster BE2.

Info for manual annotations of cluster BK1:

- Start number 11 was manually annotated 22 times for cluster BK1.

Info for manual annotations of cluster BK2:

- Start number 11 was manually annotated 4 times for cluster BK2.

Info for manual annotations of cluster CB:

- Start number 14 was manually annotated 3 times for cluster CB.

Info for manual annotations of cluster CE:

- Start number 12 was manually annotated 1 time for cluster CE.
- Start number 13 was manually annotated 1 time for cluster CE.

Info for manual annotations of cluster CG:

- Start number 13 was manually annotated 2 times for cluster CG.

Gene Information:

Gene: Amabiko_238 Start: 110860, Stop: 111099, Start Num: 11

Candidate Starts for Amabiko_238:

(Start: 11 @110860 has 92 MA's), (26, 111046),

Gene: Anedea_235 Start: 114340, Stop: 114579, Start Num: 11

Candidate Starts for Anedea_235:

(Start: 11 @114340 has 92 MA's),

Gene: Angela_224 Start: 112143, Stop: 112382, Start Num: 11

Candidate Starts for Angela_224:

(1, 112008), (Start: 11 @112143 has 92 MA's), (18, 112212),

Gene: Annadreamy_160 Start: 87923, Stop: 88159, Start Num: 11

Candidate Starts for Annadreamy_160:

(Start: 11 @87923 has 92 MA's), (19, 88010), (28, 88127),

Gene: Bartholomune_222 Start: 112320, Stop: 112559, Start Num: 11

Candidate Starts for Bartholomune_222:

(Start: 11 @112320 has 92 MA's), (15, 112347), (20, 112413),

Gene: Battuta_232 Start: 110175, Stop: 110414, Start Num: 11

Candidate Starts for Battuta_232:

(Start: 11 @110175 has 92 MA's), (26, 110361),

Gene: Belfort_172 Start: 93753, Stop: 93986, Start Num: 11

Candidate Starts for Belfort_172:
(Start: 11 @93753 has 92 MA's), (19, 93840), (27, 93945), (28, 93951),

Gene: Beuffert_166 Start: 92106, Stop: 92342, Start Num: 11
Candidate Starts for Beuffert_166:
(Start: 11 @92106 has 92 MA's), (19, 92193),

Gene: BillNye_134 Start: 83332, Stop: 83571, Start Num: 11
Candidate Starts for BillNye_134:
(6, 83272), (Start: 11 @83332 has 92 MA's), (16, 83374), (17, 83392), (24, 83497), (25, 83509),

Gene: Birchlyn_233 Start: 108108, Stop: 108347, Start Num: 11
Candidate Starts for Birchlyn_233:
(Start: 11 @108108 has 92 MA's), (26, 108294),

Gene: BlueOtter_220 Start: 112456, Stop: 112695, Start Num: 11
Candidate Starts for BlueOtter_220:
(Start: 11 @112456 has 92 MA's), (27, 112657),

Gene: Blueeyedbeauty_168 Start: 91690, Stop: 91926, Start Num: 11
Candidate Starts for Blueeyedbeauty_168:
(Start: 11 @91690 has 92 MA's), (17, 91744), (19, 91777), (28, 91894),

Gene: Bmoc_226 Start: 112584, Stop: 112823, Start Num: 11
Candidate Starts for Bmoc_226:
(Start: 11 @112584 has 92 MA's),

Gene: BoomerJR_231 Start: 110776, Stop: 111015, Start Num: 11
Candidate Starts for BoomerJR_231:
(Start: 11 @110776 has 92 MA's), (26, 110962),

Gene: Bordeaux_232 Start: 110758, Stop: 110997, Start Num: 11
Candidate Starts for Bordeaux_232:
(Start: 11 @110758 has 92 MA's), (26, 110944),

Gene: Braelyn_218 Start: 111967, Stop: 112206, Start Num: 11
Candidate Starts for Braelyn_218:
(Start: 11 @111967 has 92 MA's), (15, 111994), (20, 112060),

Gene: Cadmus_225 Start: 113265, Stop: 113504, Start Num: 11
Candidate Starts for Cadmus_225:
(4, 113199), (7, 113217), (Start: 11 @113265 has 92 MA's),

Gene: CeilingFan_238 Start: 111553, Stop: 111792, Start Num: 11
Candidate Starts for CeilingFan_238:
(Start: 11 @111553 has 92 MA's), (26, 111739),

Gene: Circinus_135 Start: 83300, Stop: 83539, Start Num: 11
Candidate Starts for Circinus_135:
(6, 83240), (Start: 11 @83300 has 92 MA's), (16, 83342), (17, 83360), (24, 83465), (25, 83477),

Gene: Comrade_169 Start: 93955, Stop: 94188, Start Num: 11
Candidate Starts for Comrade_169:

(Start: 11 @93955 has 92 MA's), (19, 94042), (27, 94147), (28, 94153),

Gene: Cross_221 Start: 113101, Stop: 113340, Start Num: 11

Candidate Starts for Cross_221:

(Start: 11 @113101 has 92 MA's), (27, 113302),

Gene: Cursive_224 Start: 112784, Stop: 113023, Start Num: 11

Candidate Starts for Cursive_224:

(Start: 11 @112784 has 92 MA's), (27, 112985),

Gene: Daubenski_215 Start: 113166, Stop: 113405, Start Num: 11

Candidate Starts for Daubenski_215:

(4, 113100), (7, 113118), (Start: 11 @113166 has 92 MA's),

Gene: Dorin_207 Start: 111817, Stop: 112053, Start Num: 13

Candidate Starts for Dorin_207:

(Start: 13 @111817 has 3 MA's), (19, 111901), (26, 111991),

Gene: EGole_226 Start: 115292, Stop: 115531, Start Num: 11

Candidate Starts for EGole_226:

(Start: 11 @115292 has 92 MA's), (27, 115493),

Gene: Elmer_242 Start: 114351, Stop: 114590, Start Num: 11

Candidate Starts for Elmer_242:

(Start: 11 @114351 has 92 MA's), (26, 114537),

Gene: Emma1919_177 Start: 92997, Stop: 93230, Start Num: 11

Candidate Starts for Emma1919_177:

(Start: 11 @92997 has 92 MA's), (18, 93063), (19, 93084), (22, 93123), (27, 93189), (28, 93195),

Gene: Enygma_241 Start: 113561, Stop: 113800, Start Num: 11

Candidate Starts for Enygma_241:

(Start: 11 @113561 has 92 MA's), (26, 113747),

Gene: Evy_212 Start: 113275, Stop: 113514, Start Num: 11

Candidate Starts for Evy_212:

(Start: 11 @113275 has 92 MA's), (26, 113461),

Gene: Faust_165 Start: 93075, Stop: 93317, Start Num: 11

Candidate Starts for Faust_165:

(10, 93054), (Start: 11 @93075 has 92 MA's), (19, 93162), (27, 93273),

Gene: Forrest_178 Start: 94432, Stop: 94665, Start Num: 11

Candidate Starts for Forrest_178:

(Start: 11 @94432 has 92 MA's), (18, 94498), (19, 94519), (22, 94558), (27, 94624), (28, 94630),

Gene: Francesca_208 Start: 112469, Stop: 112705, Start Num: 13

Candidate Starts for Francesca_208:

(Start: 13 @112469 has 3 MA's), (19, 112553), (26, 112643),

Gene: Francob_173 Start: 92988, Stop: 93221, Start Num: 11

Candidate Starts for Francob_173:

(Start: 11 @92988 has 92 MA's), (19, 93075), (27, 93180), (28, 93186),

Gene: Genie2_231 Start: 110901, Stop: 111140, Start Num: 11

Candidate Starts for Genie2_231:

(Start: 11 @110901 has 92 MA's), (26, 111087),

Gene: Gibbi_242 Start: 111046, Stop: 111285, Start Num: 11

Candidate Starts for Gibbi_242:

(Start: 11 @111046 has 92 MA's), (26, 111232),

Gene: Gilson_176 Start: 92959, Stop: 93192, Start Num: 11

Candidate Starts for Gilson_176:

(Start: 11 @92959 has 92 MA's), (18, 93025), (19, 93046), (22, 93085), (27, 93151), (28, 93157),

Gene: Grayson_201 Start: 103227, Stop: 103415, Start Num: 14

Candidate Starts for Grayson_201:

(Start: 14 @103227 has 3 MA's), (29, 103410),

Gene: HangryHippo_220 Start: 112456, Stop: 112695, Start Num: 11

Candidate Starts for HangryHippo_220:

(Start: 11 @112456 has 92 MA's), (27, 112657),

Gene: IchabodCrane_228 Start: 110561, Stop: 110800, Start Num: 11

Candidate Starts for IchabodCrane_228:

(Start: 11 @110561 has 92 MA's), (26, 110747),

Gene: Jada_175 Start: 93125, Stop: 93358, Start Num: 11

Candidate Starts for Jada_175:

(Start: 11 @93125 has 92 MA's), (18, 93191), (19, 93212), (22, 93251), (27, 93317), (28, 93323),

Gene: Jay2Jay_227 Start: 113430, Stop: 113669, Start Num: 11

Candidate Starts for Jay2Jay_227:

(Start: 11 @113430 has 92 MA's), (26, 113616),

Gene: JimJam_241 Start: 112482, Stop: 112721, Start Num: 11

Candidate Starts for JimJam_241:

(Start: 11 @112482 has 92 MA's), (26, 112668),

Gene: Jollison_231 Start: 110692, Stop: 110931, Start Num: 11

Candidate Starts for Jollison_231:

(Start: 11 @110692 has 92 MA's), (26, 110878),

Gene: Karimac_234 Start: 110877, Stop: 111116, Start Num: 11

Candidate Starts for Karimac_234:

(Start: 11 @110877 has 92 MA's), (26, 111063),

Gene: Karp_166 Start: 93179, Stop: 93412, Start Num: 11

Candidate Starts for Karp_166:

(Start: 11 @93179 has 92 MA's), (19, 93266), (27, 93371), (28, 93377),

Gene: Kenrey_179 Start: 93992, Stop: 94225, Start Num: 11

Candidate Starts for Kenrey_179:

(Start: 11 @93992 has 92 MA's), (19, 94079), (27, 94184), (28, 94190),

Gene: KentuckyRacer_240 Start: 112397, Stop: 112636, Start Num: 11
Candidate Starts for KentuckyRacer_240:
(Start: 11 @112397 has 92 MA's), (26, 112583),

Gene: Larnav_221 Start: 112950, Stop: 113189, Start Num: 11
Candidate Starts for Larnav_221:
(Start: 11 @112950 has 92 MA's), (27, 113151),

Gene: Leo04_222 Start: 113482, Stop: 113721, Start Num: 11
Candidate Starts for Leo04_222:
(Start: 11 @113482 has 92 MA's), (27, 113683),

Gene: Liandry_222 Start: 112856, Stop: 113095, Start Num: 11
Candidate Starts for Liandry_222:
(Start: 11 @112856 has 92 MA's), (15, 112883), (20, 112949),

Gene: LilMartin_221 Start: 111507, Stop: 111746, Start Num: 11
Candidate Starts for LilMartin_221:
(1, 111372), (Start: 11 @111507 has 92 MA's), (18, 111576),

Gene: Limpid_167 Start: 93236, Stop: 93472, Start Num: 11
Candidate Starts for Limpid_167:
(Start: 11 @93236 has 92 MA's), (19, 93323), (28, 93440),

Gene: LukeCage_237 Start: 112722, Stop: 112961, Start Num: 11
Candidate Starts for LukeCage_237:
(Start: 11 @112722 has 92 MA's), (26, 112908),

Gene: Lululemon_218 Start: 111837, Stop: 112076, Start Num: 11
Candidate Starts for Lululemon_218:
(Start: 11 @111837 has 92 MA's), (27, 112038),

Gene: Marsus_234 Start: 113172, Stop: 113411, Start Num: 11
Candidate Starts for Marsus_234:
(1, 113037), (Start: 11 @113172 has 92 MA's),

Gene: MeganTheeKilla_176 Start: 93028, Stop: 93261, Start Num: 11
Candidate Starts for MeganTheeKilla_176:
(Start: 11 @93028 has 92 MA's), (18, 93094), (19, 93115), (22, 93154), (27, 93220), (28, 93226),

Gene: Mildred21_231 Start: 111222, Stop: 111461, Start Num: 11
Candidate Starts for Mildred21_231:
(1, 111087), (Start: 11 @111222 has 92 MA's), (18, 111291),

Gene: MindFlayer_227 Start: 110077, Stop: 110316, Start Num: 11
Candidate Starts for MindFlayer_227:
(Start: 11 @110077 has 92 MA's), (26, 110263),

Gene: Moab_174 Start: 95462, Stop: 95701, Start Num: 11
Candidate Starts for Moab_174:
(Start: 11 @95462 has 92 MA's), (19, 95549), (27, 95660), (28, 95666),

Gene: Mugiwara_246 Start: 113260, Stop: 113499, Start Num: 11

Candidate Starts for Mugiwara_246:
(Start: 11 @113260 has 92 MA's), (26, 113446),

Gene: MulchMansion_225 Start: 113141, Stop: 113380, Start Num: 11
Candidate Starts for MulchMansion_225:
(1, 113006), (Start: 11 @113141 has 92 MA's), (18, 113210),

Gene: Muntaha_142 Start: 82281, Stop: 82520, Start Num: 11
Candidate Starts for Muntaha_142:
(Start: 11 @82281 has 92 MA's), (16, 82323), (17, 82341), (24, 82446),

Gene: Navo_216 Start: 111171, Stop: 111410, Start Num: 11
Candidate Starts for Navo_216:
(Start: 11 @111171 has 92 MA's), (15, 111198), (20, 111264),

Gene: NiceHouse_217 Start: 118286, Stop: 118510, Start Num: 13
Candidate Starts for NiceHouse_217:
(8, 118250), (Start: 13 @118286 has 3 MA's), (21, 118403), (29, 118484),

Gene: NootNoot_219 Start: 111701, Stop: 111940, Start Num: 11
Candidate Starts for NootNoot_219:
(Start: 11 @111701 has 92 MA's), (15, 111728), (20, 111794),

Gene: Nova53_220 Start: 116561, Stop: 116821, Start Num: 9
Candidate Starts for Nova53_220:
(2, 116474), (5, 116522), (9, 116561), (Start: 12 @116588 has 1 MA's), (19, 116672), (26, 116762),

Gene: PacManQ_218 Start: 111837, Stop: 112076, Start Num: 11
Candidate Starts for PacManQ_218:
(Start: 11 @111837 has 92 MA's), (27, 112038),

Gene: Paradiddles_214 Start: 114076, Stop: 114315, Start Num: 11
Candidate Starts for Paradiddles_214:
(Start: 11 @114076 has 92 MA's), (15, 114103), (20, 114169),

Gene: Patelgo_175 Start: 95920, Stop: 96159, Start Num: 11
Candidate Starts for Patelgo_175:
(Start: 11 @95920 has 92 MA's), (19, 96007), (27, 96118), (28, 96124),

Gene: Pepperwood_222 Start: 113153, Stop: 113392, Start Num: 11
Candidate Starts for Pepperwood_222:
(Start: 11 @113153 has 92 MA's), (27, 113354),

Gene: Peregrin_199 Start: 103629, Stop: 103817, Start Num: 14
Candidate Starts for Peregrin_199:
(Start: 14 @103629 has 3 MA's), (29, 103812),

Gene: Persimmon_225 Start: 112189, Stop: 112428, Start Num: 11
Candidate Starts for Persimmon_225:
(Start: 11 @112189 has 92 MA's), (15, 112216), (20, 112282),

Gene: Phredrick_177 Start: 92623, Stop: 92856, Start Num: 11
Candidate Starts for Phredrick_177:

(Start: 11 @92623 has 92 MA's), (19, 92710), (27, 92815), (28, 92821),

Gene: PinkiePie_222 Start: 112856, Stop: 113095, Start Num: 11

Candidate Starts for PinkiePie_222:

(Start: 11 @112856 has 92 MA's), (15, 112883), (20, 112949),

Gene: PumpkinSpice_237 Start: 111298, Stop: 111537, Start Num: 11

Candidate Starts for PumpkinSpice_237:

(Start: 11 @111298 has 92 MA's), (26, 111484),

Gene: Quaran19_234 Start: 110739, Stop: 110978, Start Num: 11

Candidate Starts for Quaran19_234:

(Start: 11 @110739 has 92 MA's), (26, 110925),

Gene: Rikishi_242 Start: 111020, Stop: 111259, Start Num: 11

Candidate Starts for Rikishi_242:

(Start: 11 @111020 has 92 MA's), (26, 111206),

Gene: Riptide_228 Start: 111870, Stop: 112109, Start Num: 11

Candidate Starts for Riptide_228:

(Start: 11 @111870 has 92 MA's),

Gene: SaltySpittoon_234 Start: 110281, Stop: 110520, Start Num: 11

Candidate Starts for SaltySpittoon_234:

(Start: 11 @110281 has 92 MA's), (26, 110467),

Gene: Samisti12_226 Start: 114747, Stop: 114986, Start Num: 11

Candidate Starts for Samisti12_226:

(Start: 11 @114747 has 92 MA's), (27, 114948),

Gene: Scheme_225 Start: 114392, Stop: 114631, Start Num: 11

Candidate Starts for Scheme_225:

(Start: 11 @114392 has 92 MA's), (27, 114593),

Gene: SeresaTree_167 Start: 92457, Stop: 92699, Start Num: 11

Candidate Starts for SeresaTree_167:

(10, 92436), (Start: 11 @92457 has 92 MA's), (19, 92544), (27, 92655),

Gene: Sham_165 Start: 94074, Stop: 94316, Start Num: 11

Candidate Starts for Sham_165:

(10, 94053), (Start: 11 @94074 has 92 MA's), (16, 94110), (19, 94161), (27, 94272),

Gene: Shuckle_224 Start: 113281, Stop: 113520, Start Num: 11

Candidate Starts for Shuckle_224:

(Start: 11 @113281 has 92 MA's),

Gene: Sollertia_232 Start: 110890, Stop: 111129, Start Num: 11

Candidate Starts for Sollertia_232:

(Start: 11 @110890 has 92 MA's), (26, 111076),

Gene: SparkleGoddess_172 Start: 94163, Stop: 94396, Start Num: 11

Candidate Starts for SparkleGoddess_172:

(Start: 11 @94163 has 92 MA's), (19, 94250), (27, 94355), (28, 94361),

Gene: Spelly_239 Start: 110210, Stop: 110449, Start Num: 11
Candidate Starts for Spelly_239:
(Start: 11 @110210 has 92 MA's), (26, 110396),

Gene: Spilled_241 Start: 111414, Stop: 111653, Start Num: 11
Candidate Starts for Spilled_241:
(Start: 11 @111414 has 92 MA's), (26, 111600),

Gene: Squillium_225 Start: 112858, Stop: 113097, Start Num: 11
Candidate Starts for Squillium_225:
(Start: 11 @112858 has 92 MA's), (15, 112885), (20, 112951),

Gene: Stanimal_231 Start: 111262, Stop: 111501, Start Num: 11
Candidate Starts for Stanimal_231:
(Start: 11 @111262 has 92 MA's), (26, 111448),

Gene: StarPlatinum_241 Start: 113222, Stop: 113461, Start Num: 11
Candidate Starts for StarPlatinum_241:
(3, 113150), (Start: 11 @113222 has 92 MA's), (26, 113408),

Gene: Starbow_231 Start: 110254, Stop: 110493, Start Num: 11
Candidate Starts for Starbow_231:
(Start: 11 @110254 has 92 MA's), (26, 110440),

Gene: Stigma_170 Start: 94400, Stop: 94633, Start Num: 11
Candidate Starts for Stigma_170:
(Start: 11 @94400 has 92 MA's), (19, 94487), (27, 94592), (28, 94598),

Gene: Sushi23_222 Start: 113787, Stop: 114026, Start Num: 11
Candidate Starts for Sushi23_222:
(Start: 11 @113787 has 92 MA's), (27, 113988),

Gene: Targaryen_221 Start: 113959, Stop: 114198, Start Num: 11
Candidate Starts for Targaryen_221:
(Start: 11 @113959 has 92 MA's),

Gene: Teutsch_221 Start: 113576, Stop: 113815, Start Num: 11
Candidate Starts for Teutsch_221:
(Start: 11 @113576 has 92 MA's), (27, 113777),

Gene: TomSawyer_238 Start: 112725, Stop: 112964, Start Num: 11
Candidate Starts for TomSawyer_238:
(Start: 11 @112725 has 92 MA's), (26, 112911),

Gene: Tomas_234 Start: 114656, Stop: 114895, Start Num: 11
Candidate Starts for Tomas_234:
(Start: 11 @114656 has 92 MA's), (26, 114842),

Gene: Tribute_218 Start: 113741, Stop: 113980, Start Num: 11
Candidate Starts for Tribute_218:
(Start: 11 @113741 has 92 MA's), (27, 113942),

Gene: Trina_221 Start: 117099, Stop: 117323, Start Num: 12
Candidate Starts for Trina_221:
(8, 117075), (Start: 12 @117099 has 1 MA's), (18, 117162), (23, 117234),

Gene: TunaTartare_172 Start: 95786, Stop: 96028, Start Num: 11
Candidate Starts for TunaTartare_172:
(10, 95765), (Start: 11 @95786 has 92 MA's), (16, 95822), (19, 95873), (27, 95984),

Gene: Wakanda_141 Start: 82223, Stop: 82462, Start Num: 11
Candidate Starts for Wakanda_141:
(Start: 11 @82223 has 92 MA's), (16, 82265), (17, 82283), (24, 82388),

Gene: Warpy_225 Start: 112868, Stop: 113107, Start Num: 11
Candidate Starts for Warpy_225:
(Start: 11 @112868 has 92 MA's), (26, 113054),

Gene: Watermoore_221 Start: 114099, Stop: 114338, Start Num: 11
Candidate Starts for Watermoore_221:
(Start: 11 @114099 has 92 MA's), (27, 114300),

Gene: Weasels2_204 Start: 106469, Stop: 106657, Start Num: 14
Candidate Starts for Weasels2_204:
(Start: 14 @106469 has 3 MA's),

Gene: Westy_173 Start: 94712, Stop: 94945, Start Num: 11
Candidate Starts for Westy_173:
(Start: 11 @94712 has 92 MA's), (19, 94799), (27, 94904), (28, 94910),

Gene: WhereRU_221 Start: 112350, Stop: 112589, Start Num: 11
Candidate Starts for WhereRU_221:
(Start: 11 @112350 has 92 MA's), (15, 112377), (20, 112443),

Gene: Wipeout_224 Start: 111677, Stop: 111916, Start Num: 11
Candidate Starts for Wipeout_224:
(Start: 11 @111677 has 92 MA's), (26, 111863),

Gene: Wofford_234 Start: 113965, Stop: 114204, Start Num: 11
Candidate Starts for Wofford_234:
(Start: 11 @113965 has 92 MA's), (26, 114151),

Gene: Yaboi_236 Start: 110825, Stop: 111064, Start Num: 11
Candidate Starts for Yaboi_236:
(Start: 11 @110825 has 92 MA's), (26, 111011),