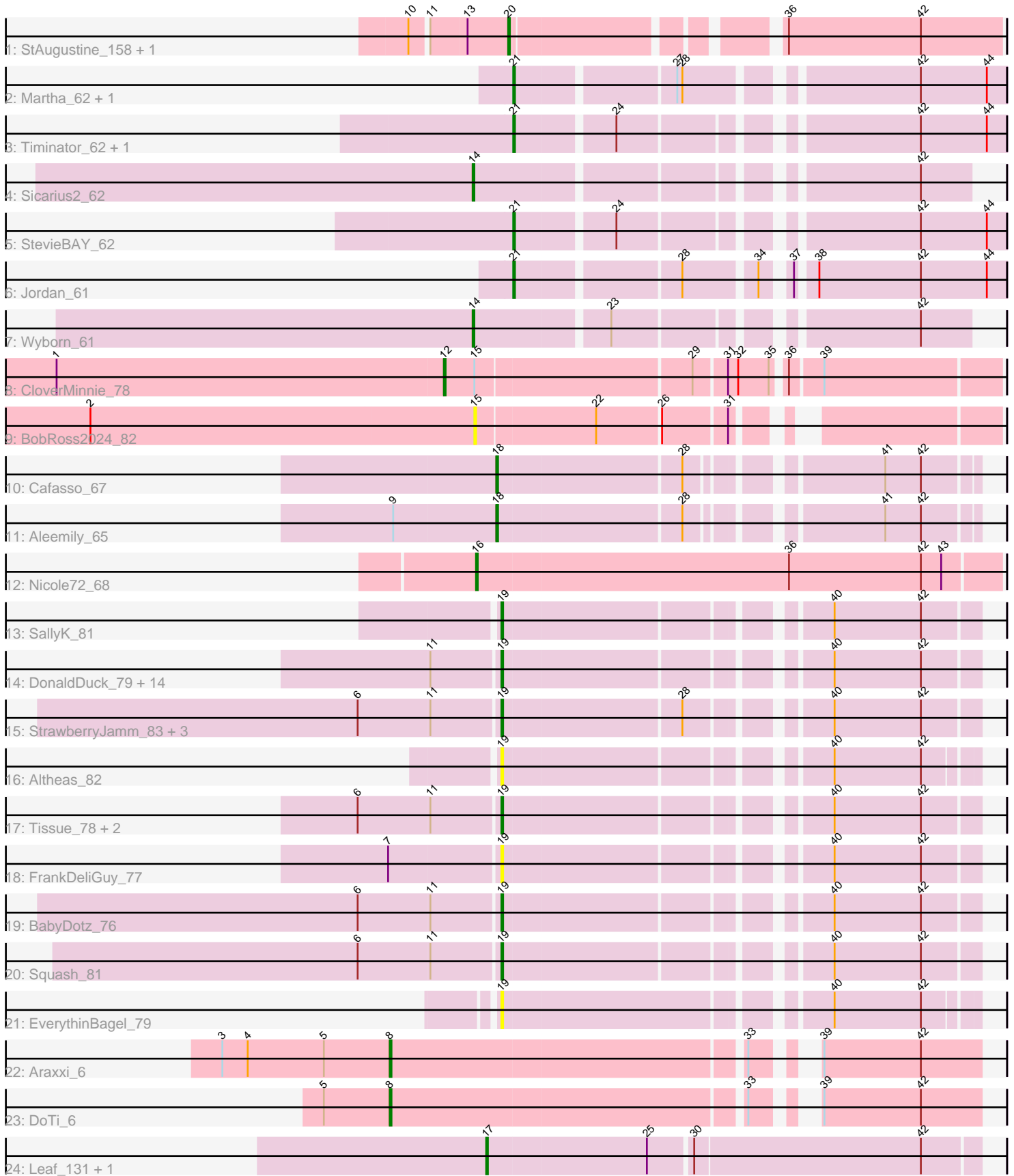


# Pham 219848



Note: Tracks are now grouped by subcluster and scaled. Switching in subcluster is indicated by changes in track color. Track scale is now set by default to display the region 30 bp upstream of start 1 to 30 bp downstream of the last possible start. If this default region is judged to be packed too tightly with annotated starts, the track will be further scaled to only show that region of the ORF with annotated starts. This action will be indicated by adding "Zoomed" to the title. For starts, yellow indicates the location of called starts comprised solely of Glimmer/GeneMark auto-annotations, green indicates the location of called starts with at least 1 manual gene annotation.

## Pham 219848 Report

This analysis was run 03/28/25 on database version 593.

Pham number 219848 has 47 members, 12 are drafts.

Phages represented in each track:

- Track 1 : StAugustine\_158, Causa\_166
- Track 2 : Martha\_62, TaeYoung\_63
- Track 3 : Timinator\_62, LeeroyJ\_62
- Track 4 : Sicarius2\_62
- Track 5 : StevieBAY\_62
- Track 6 : Jordan\_61
- Track 7 : Wyborn\_61
- Track 8 : CloverMinnie\_78
- Track 9 : BobRoss2024\_82
- Track 10 : Cafasso\_67
- Track 11 : Aleemily\_65
- Track 12 : Nicole72\_68
- Track 13 : SallyK\_81
- Track 14 : DonaldDuck\_79, Phabia\_77, Sillytadpoles\_80, Quammi\_76, Judebell\_77, Viceroy\_76, Rudy\_75, Wheelie\_77, Wayne3\_79, Casend\_78, Lonelysoil\_75, Zhafia\_82, Teehee\_78, Jehoshaphat\_79, Llemily\_79
- Track 15 : StrawberryJamm\_83, Zagie\_79, Namago\_80, Mentos\_81
- Track 16 : Altheas\_82
- Track 17 : Tissue\_78, Kyva\_81, Grassboy\_82
- Track 18 : FrankDeliGuy\_77
- Track 19 : BabyDotz\_76
- Track 20 : Squash\_81
- Track 21 : EverythinBagel\_79
- Track 22 : Araxxi\_6
- Track 23 : DoTi\_6
- Track 24 : Leaf\_131, Dewdrop\_131

### ***Summary of Final Annotations (See graph section above for start numbers):***

The start number called the most often in the published annotations is 19, it was called in 18 of the 35 non-draft genes in the pham.

Genes that call this "Most Annotated" start:

- Altheas\_82, BabyDotz\_76, Casend\_78, DonaldDuck\_79, EverythinBagel\_79, FrankDeliGuy\_77, Grassboy\_82, Jehoshaphat\_79, Judebell\_77, Kyva\_81, Llemily\_79, Lonelysoil\_75, Mentos\_81, Namago\_80, Phabia\_77, Quammi\_76, Rudy\_75, SallyK\_81, Sillytadpoles\_80, Squash\_81, StrawberryJamm\_83, Teehee\_78, Tissue\_78, Viceroy\_76, Wayne3\_79, Wheelie\_77, Zagie\_79, Zhafia\_82,

Genes that have the "Most Annotated" start but do not call it:

- 

Genes that do not have the "Most Annotated" start:

- Aleemily\_65, Araxxi\_6, BobRoss2024\_82, Cafasso\_67, Causa\_166, CloverMinnie\_78, Dewdrop\_131, DoTi\_6, Jordan\_61, Leaf\_131, LeeroyJ\_62, Martha\_62, Nicole72\_68, Sicarius2\_62, StAugustine\_158, StevieBAY\_62, TaeYoung\_63, Timinator\_62, Wyborn\_61,

### Summary by start number:

Start 8:

- Found in 2 of 47 ( 4.3% ) of genes in pham
- Manual Annotations of this start: 2 of 35
- Called 100.0% of time when present
- Phage (with cluster) where this start called: Araxxi\_6 (EM1), DoTi\_6 (EM1),

Start 12:

- Found in 1 of 47 ( 2.1% ) of genes in pham
- Manual Annotations of this start: 1 of 35
- Called 100.0% of time when present
- Phage (with cluster) where this start called: CloverMinnie\_78 (DR),

Start 14:

- Found in 2 of 47 ( 4.3% ) of genes in pham
- Manual Annotations of this start: 2 of 35
- Called 100.0% of time when present
- Phage (with cluster) where this start called: Sicarius2\_62 (AO2), Wyborn\_61 (AO2),

Start 15:

- Found in 2 of 47 ( 4.3% ) of genes in pham
- No Manual Annotations of this start.
- Called 50.0% of time when present
- Phage (with cluster) where this start called: BobRoss2024\_82 (DR),

Start 16:

- Found in 1 of 47 ( 2.1% ) of genes in pham
- Manual Annotations of this start: 1 of 35
- Called 100.0% of time when present
- Phage (with cluster) where this start called: Nicole72\_68 (EC),

Start 17:

- Found in 2 of 47 ( 4.3% ) of genes in pham
- Manual Annotations of this start: 2 of 35
- Called 100.0% of time when present
- Phage (with cluster) where this start called: Dewdrop\_131 (GC), Leaf\_131 (GC),

Start 18:

- Found in 2 of 47 ( 4.3% ) of genes in pham
- Manual Annotations of this start: 2 of 35
- Called 100.0% of time when present
- Phage (with cluster) where this start called: Aleemily\_65 (DZ), Cafasso\_67 (DZ),

Start 19:

- Found in 28 of 47 ( 59.6% ) of genes in pham
- Manual Annotations of this start: 18 of 35
- Called 100.0% of time when present
- Phage (with cluster) where this start called: Altheas\_82 (EG), BabyDotz\_76 (EG), Casend\_78 (EG), DonaldDuck\_79 (EG), EverythinBagel\_79 (EG), FrankDeliGuy\_77 (EG), Grassboy\_82 (EG), Jehoshaphat\_79 (EG), Judebell\_77 (EG), Kyva\_81 (EG), Llemily\_79 (EG), Lonelysoil\_75 (EG), Mentos\_81 (EG), Namago\_80 (EG), Phabia\_77 (EG), Quammi\_76 (EG), Rudy\_75 (EG), SallyK\_81 (EG), Sillytadpoles\_80 (EG), Squash\_81 (EG), StrawberryJamm\_83 (EG), Teehee\_78 (EG), Tissue\_78 (EG), Viceroy\_76 (EG), Wayne3\_79 (EG), Wheelie\_77 (EG), Zagie\_79 (EG), Zhafia\_82 (EG),

Start 20:

- Found in 2 of 47 ( 4.3% ) of genes in pham
- Manual Annotations of this start: 1 of 35
- Called 100.0% of time when present
- Phage (with cluster) where this start called: Causa\_166 (AI), StAugustine\_158 (AI),

Start 21:

- Found in 6 of 47 ( 12.8% ) of genes in pham
- Manual Annotations of this start: 6 of 35
- Called 100.0% of time when present
- Phage (with cluster) where this start called: Jordan\_61 (AO2), LeeroyJ\_62 (AO2), Martha\_62 (AO2), StevieBAY\_62 (AO2), TaeYoung\_63 (AO2), Timinator\_62 (AO2),

**Summary by clusters:**

There are 8 clusters represented in this pham: GC, AI, EG, EC, DZ, AO2, EM1, DR,

Info for manual annotations of cluster AI:

- Start number 20 was manually annotated 1 time for cluster AI.

Info for manual annotations of cluster AO2:

- Start number 14 was manually annotated 2 times for cluster AO2.
- Start number 21 was manually annotated 6 times for cluster AO2.

Info for manual annotations of cluster DR:

- Start number 12 was manually annotated 1 time for cluster DR.

Info for manual annotations of cluster DZ:

- Start number 18 was manually annotated 2 times for cluster DZ.

Info for manual annotations of cluster EC:

- Start number 16 was manually annotated 1 time for cluster EC.

Info for manual annotations of cluster EG:

- Start number 19 was manually annotated 18 times for cluster EG.

Info for manual annotations of cluster EM1:

- Start number 8 was manually annotated 2 times for cluster EM1.

Info for manual annotations of cluster GC:

- Start number 17 was manually annotated 2 times for cluster GC.

### **Gene Information:**

Gene: Aleemily\_65 Start: 44043, Stop: 44294, Start Num: 18

Candidate Starts for Aleemily\_65:

(9, 43986), (Start: 18 @44043 has 2 MA's), (28, 44148), (41, 44244), (42, 44265),

Gene: Altheas\_82 Start: 52675, Stop: 52424, Start Num: 19

Candidate Starts for Altheas\_82:

(Start: 19 @52675 has 18 MA's), (40, 52504), (42, 52453),

Gene: Araxxi\_6 Start: 4637, Stop: 4323, Start Num: 8

Candidate Starts for Araxxi\_6:

(3, 4736), (4, 4721), (5, 4676), (Start: 8 @4637 has 2 MA's), (33, 4436), (39, 4415), (42, 4358),

Gene: BabyDotz\_76 Start: 52692, Stop: 52438, Start Num: 19

Candidate Starts for BabyDotz\_76:

(6, 52773), (11, 52731), (Start: 19 @52692 has 18 MA's), (40, 52521), (42, 52470),

Gene: BobRoss2024\_82 Start: 58913, Stop: 58647, Start Num: 15

Candidate Starts for BobRoss2024\_82:

(2, 59138), (15, 58913), (22, 58844), (26, 58808), (31, 58772),

Gene: Cafasso\_67 Start: 44688, Stop: 44939, Start Num: 18

Candidate Starts for Cafasso\_67:

(Start: 18 @44688 has 2 MA's), (28, 44793), (41, 44889), (42, 44910),

Gene: Casend\_78 Start: 51974, Stop: 51720, Start Num: 19

Candidate Starts for Casend\_78:

(11, 52013), (Start: 19 @51974 has 18 MA's), (40, 51803), (42, 51752),

Gene: Causa\_166 Start: 90015, Stop: 89755, Start Num: 20

Candidate Starts for Causa\_166:

(10, 90069), (11, 90060), (13, 90039), (Start: 20 @90015 has 1 MA's), (36, 89880), (42, 89802),

Gene: CloverMinnie\_78 Start: 58221, Stop: 57913, Start Num: 12

Candidate Starts for CloverMinnie\_78:

(1, 58449), (Start: 12 @58221 has 1 MA's), (15, 58203), (29, 58080), (31, 58062), (32, 58056), (35, 58038), (36, 58032), (39, 58014),

Gene: Dewdrop\_131 Start: 79903, Stop: 80184, Start Num: 17

Candidate Starts for Dewdrop\_131:

(Start: 17 @79903 has 2 MA's), (25, 79996), (30, 80020), (42, 80152),

Gene: DoTi\_6 Start: 4634, Stop: 4320, Start Num: 8  
Candidate Starts for DoTi\_6:  
(5, 4673), (Start: 8 @4634 has 2 MA's), (33, 4433), (39, 4412), (42, 4355),

Gene: DonaldDuck\_79 Start: 51326, Stop: 51072, Start Num: 19  
Candidate Starts for DonaldDuck\_79:  
(11, 51365), (Start: 19 @51326 has 18 MA's), (40, 51155), (42, 51104),

Gene: EverythinBagel\_79 Start: 51811, Stop: 51557, Start Num: 19  
Candidate Starts for EverythinBagel\_79:  
(Start: 19 @51811 has 18 MA's), (40, 51637), (42, 51586),

Gene: FrankDeliGuy\_77 Start: 51694, Stop: 51440, Start Num: 19  
Candidate Starts for FrankDeliGuy\_77:  
(7, 51757), (Start: 19 @51694 has 18 MA's), (40, 51523), (42, 51472),

Gene: Grassboy\_82 Start: 52375, Stop: 52121, Start Num: 19  
Candidate Starts for Grassboy\_82:  
(6, 52456), (11, 52414), (Start: 19 @52375 has 18 MA's), (40, 52204), (42, 52153),

Gene: Jehoshaphat\_79 Start: 52242, Stop: 51988, Start Num: 19  
Candidate Starts for Jehoshaphat\_79:  
(11, 52281), (Start: 19 @52242 has 18 MA's), (40, 52071), (42, 52020),

Gene: Jordan\_61 Start: 41349, Stop: 41609, Start Num: 21  
Candidate Starts for Jordan\_61:  
(Start: 21 @41349 has 6 MA's), (28, 41439), (34, 41478), (37, 41490), (38, 41499), (42, 41559), (44, 41598),

Gene: Judebell\_77 Start: 51466, Stop: 51212, Start Num: 19  
Candidate Starts for Judebell\_77:  
(11, 51505), (Start: 19 @51466 has 18 MA's), (40, 51295), (42, 51244),

Gene: Kyva\_81 Start: 52399, Stop: 52145, Start Num: 19  
Candidate Starts for Kyva\_81:  
(6, 52480), (11, 52438), (Start: 19 @52399 has 18 MA's), (40, 52228), (42, 52177),

Gene: Leaf\_131 Start: 79834, Stop: 80115, Start Num: 17  
Candidate Starts for Leaf\_131:  
(Start: 17 @79834 has 2 MA's), (25, 79927), (30, 79951), (42, 80083),

Gene: LeeroyJ\_62 Start: 41440, Stop: 41697, Start Num: 21  
Candidate Starts for LeeroyJ\_62:  
(Start: 21 @41440 has 6 MA's), (24, 41494), (42, 41647), (44, 41686),

Gene: Llemily\_79 Start: 51021, Stop: 50767, Start Num: 19  
Candidate Starts for Llemily\_79:  
(11, 51060), (Start: 19 @51021 has 18 MA's), (40, 50850), (42, 50799),

Gene: Lonelysoil\_75 Start: 50778, Stop: 50524, Start Num: 19  
Candidate Starts for Lonelysoil\_75:  
(11, 50817), (Start: 19 @50778 has 18 MA's), (40, 50607), (42, 50556),

Gene: Martha\_62 Start: 41574, Stop: 41834, Start Num: 21

Candidate Starts for Martha\_62:

(Start: 21 @41574 has 6 MA's), (27, 41661), (28, 41664), (42, 41784), (44, 41823),

Gene: Mentos\_81 Start: 52697, Stop: 52443, Start Num: 19

Candidate Starts for Mentos\_81:

(6, 52778), (11, 52736), (Start: 19 @52697 has 18 MA's), (28, 52595), (40, 52526), (42, 52475),

Gene: Namago\_80 Start: 51746, Stop: 51492, Start Num: 19

Candidate Starts for Namago\_80:

(6, 51827), (11, 51785), (Start: 19 @51746 has 18 MA's), (28, 51644), (40, 51575), (42, 51524),

Gene: Nicole72\_68 Start: 47467, Stop: 47772, Start Num: 16

Candidate Starts for Nicole72\_68:

(Start: 16 @47467 has 1 MA's), (36, 47650), (42, 47728), (43, 47740),

Gene: Phabia\_77 Start: 51433, Stop: 51179, Start Num: 19

Candidate Starts for Phabia\_77:

(11, 51472), (Start: 19 @51433 has 18 MA's), (40, 51262), (42, 51211),

Gene: Quammi\_76 Start: 51133, Stop: 50879, Start Num: 19

Candidate Starts for Quammi\_76:

(11, 51172), (Start: 19 @51133 has 18 MA's), (40, 50962), (42, 50911),

Gene: Rudy\_75 Start: 51169, Stop: 50915, Start Num: 19

Candidate Starts for Rudy\_75:

(11, 51208), (Start: 19 @51169 has 18 MA's), (40, 50998), (42, 50947),

Gene: SallyK\_81 Start: 53146, Stop: 52892, Start Num: 19

Candidate Starts for SallyK\_81:

(Start: 19 @53146 has 18 MA's), (40, 52975), (42, 52924),

Gene: Sicarius2\_62 Start: 39966, Stop: 40226, Start Num: 14

Candidate Starts for Sicarius2\_62:

(Start: 14 @39966 has 2 MA's), (42, 40197),

Gene: Sillytadpoles\_80 Start: 51009, Stop: 50755, Start Num: 19

Candidate Starts for Sillytadpoles\_80:

(11, 51048), (Start: 19 @51009 has 18 MA's), (40, 50838), (42, 50787),

Gene: Squash\_81 Start: 52382, Stop: 52128, Start Num: 19

Candidate Starts for Squash\_81:

(6, 52463), (11, 52421), (Start: 19 @52382 has 18 MA's), (40, 52211), (42, 52160),

Gene: StAugustine\_158 Start: 91113, Stop: 90853, Start Num: 20

Candidate Starts for StAugustine\_158:

(10, 91167), (11, 91158), (13, 91137), (Start: 20 @91113 has 1 MA's), (36, 90978), (42, 90900),

Gene: StevieBAY\_62 Start: 41704, Stop: 41961, Start Num: 21

Candidate Starts for StevieBAY\_62:

(Start: 21 @41704 has 6 MA's), (24, 41758), (42, 41911), (44, 41950),

Gene: StrawberryJamm\_83 Start: 51549, Stop: 51295, Start Num: 19

Candidate Starts for StrawberryJamm\_83:

(6, 51630), (11, 51588), (Start: 19 @51549 has 18 MA's), (28, 51447), (40, 51378), (42, 51327),

Gene: TaeYoung\_63 Start: 41547, Stop: 41807, Start Num: 21

Candidate Starts for TaeYoung\_63:

(Start: 21 @41547 has 6 MA's), (27, 41634), (28, 41637), (42, 41757), (44, 41796),

Gene: Teehee\_78 Start: 52239, Stop: 51985, Start Num: 19

Candidate Starts for Teehee\_78:

(11, 52278), (Start: 19 @52239 has 18 MA's), (40, 52068), (42, 52017),

Gene: Timinator\_62 Start: 41553, Stop: 41810, Start Num: 21

Candidate Starts for Timinator\_62:

(Start: 21 @41553 has 6 MA's), (24, 41607), (42, 41760), (44, 41799),

Gene: Tissue\_78 Start: 52006, Stop: 51752, Start Num: 19

Candidate Starts for Tissue\_78:

(6, 52087), (11, 52045), (Start: 19 @52006 has 18 MA's), (40, 51835), (42, 51784),

Gene: Viceroy\_76 Start: 51142, Stop: 50888, Start Num: 19

Candidate Starts for Viceroy\_76:

(11, 51181), (Start: 19 @51142 has 18 MA's), (40, 50971), (42, 50920),

Gene: Wayne3\_79 Start: 52002, Stop: 51748, Start Num: 19

Candidate Starts for Wayne3\_79:

(11, 52041), (Start: 19 @52002 has 18 MA's), (40, 51831), (42, 51780),

Gene: Wheelie\_77 Start: 51323, Stop: 51069, Start Num: 19

Candidate Starts for Wheelie\_77:

(11, 51362), (Start: 19 @51323 has 18 MA's), (40, 51152), (42, 51101),

Gene: Wyborn\_61 Start: 40683, Stop: 40943, Start Num: 14

Candidate Starts for Wyborn\_61:

(Start: 14 @40683 has 2 MA's), (23, 40758), (42, 40914),

Gene: Zagie\_79 Start: 51826, Stop: 51572, Start Num: 19

Candidate Starts for Zagie\_79:

(6, 51907), (11, 51865), (Start: 19 @51826 has 18 MA's), (28, 51724), (40, 51655), (42, 51604),

Gene: Zhafia\_82 Start: 51803, Stop: 51549, Start Num: 19

Candidate Starts for Zhafia\_82:

(11, 51842), (Start: 19 @51803 has 18 MA's), (40, 51632), (42, 51581),