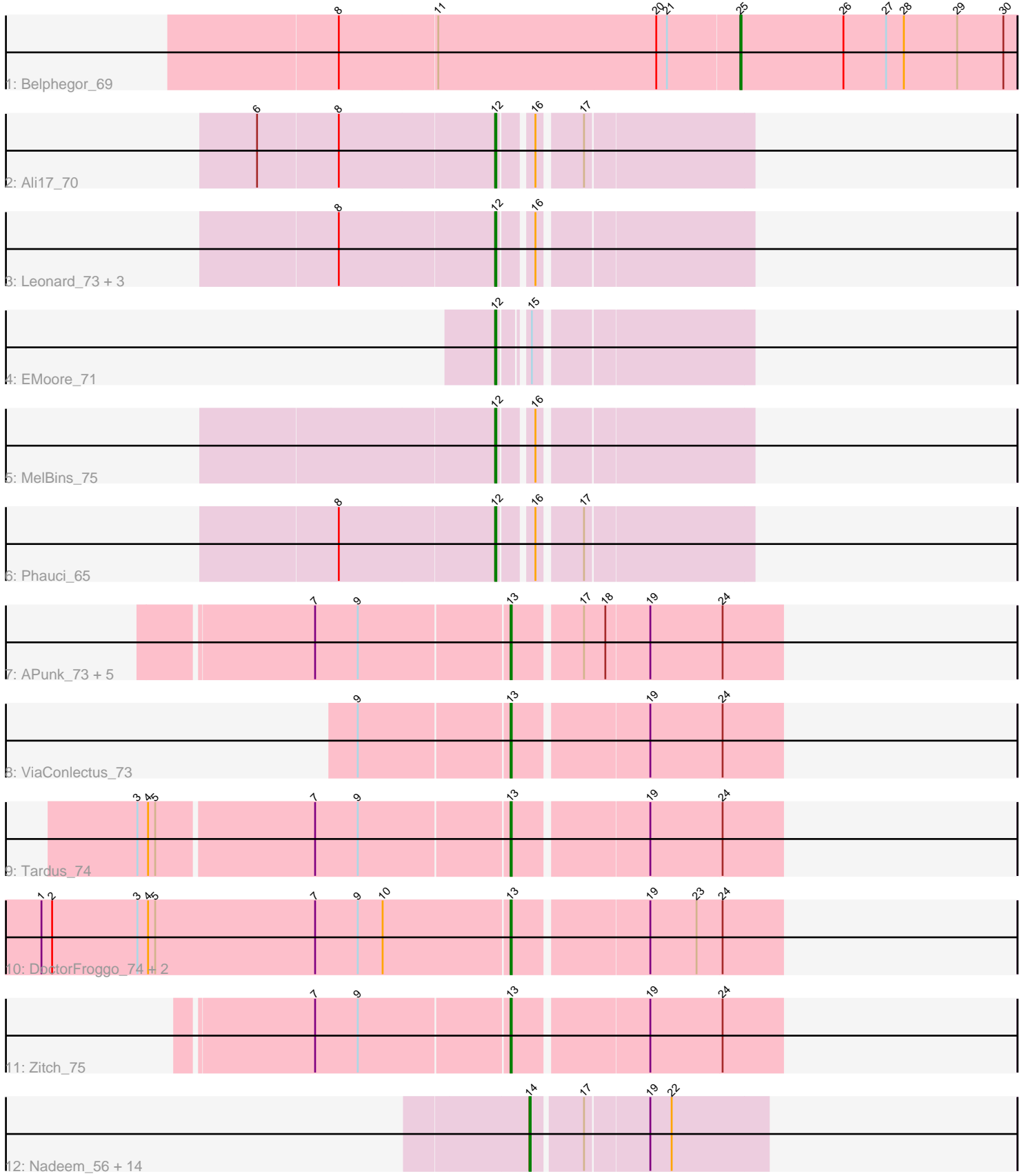


Pham 219933



Note: Tracks are now grouped by subcluster and scaled. Switching in subcluster is indicated by changes in track color. Track scale is now set by default to display the region 30 bp upstream of start 1 to 30 bp downstream of the last possible start. If this default region is judged to be packed too tightly with annotated starts, the track will be further scaled to only show that region of the ORF with annotated starts. This action will be indicated by adding "Zoomed" to the title. For starts, yellow indicates the location of called starts comprised solely of Glimmer/GeneMark auto-annotations, green indicates the location of called starts with at least 1 manual gene annotation.

Pham 219933 Report

This analysis was run 03/28/25 on database version 593.

Pham number 219933 has 36 members, 3 are drafts.

Phages represented in each track:

- Track 1 : Belphegor_69
- Track 2 : Ali17_70
- Track 3 : Leonard_73, Hans_74, Phinally_73, Inspectinfecti_74
- Track 4 : EMOore_71
- Track 5 : MelBins_75
- Track 6 : Phauci_65
- Track 7 : APunk_73, Scioto_73, Zipp_74, Natkenzie_73, Abblin_73, Sampson_75
- Track 8 : ViaConlectus_73
- Track 9 : Tardus_74
- Track 10 : DoctorFroggo_74, Delrey21_74, Verity_74
- Track 11 : Zitch_75
- Track 12 : Nadeem_56, WheatThin_55, Parada_56, Brylie_56, Chop_57, Bock_57, Hamood_57, Francois_56, Mulch_56, Ayotoya_57, Pimento_58, NancyRae_55, BetterKatz_56, GrandSlam_57, DelRio_57

Summary of Final Annotations (See graph section above for start numbers):

The start number called the most often in the published annotations is 14, it was called in 15 of the 33 non-draft genes in the pham.

Genes that call this "Most Annotated" start:

- Ayotoya_57, BetterKatz_56, Bock_57, Brylie_56, Chop_57, DelRio_57, Francois_56, GrandSlam_57, Hamood_57, Mulch_56, Nadeem_56, NancyRae_55, Parada_56, Pimento_58, WheatThin_55,

Genes that have the "Most Annotated" start but do not call it:

-

Genes that do not have the "Most Annotated" start:

- APunk_73, Abblin_73, Ali17_70, Belphegor_69, Delrey21_74, DoctorFroggo_74, EMOore_71, Hans_74, Inspectinfecti_74, Leonard_73, MelBins_75, Natkenzie_73, Phauci_65, Phinally_73, Sampson_75, Scioto_73, Tardus_74, Verity_74, ViaConlectus_73, Zipp_74, Zitch_75,

Summary by start number:

Start 12:

- Found in 8 of 36 (22.2%) of genes in pham
- Manual Annotations of this start: 8 of 33
- Called 100.0% of time when present
- Phage (with cluster) where this start called: Ali17_70 (DE2), EMoore_71 (DE2), Hans_74 (DE2), Inspectinfecti_74 (DE2), Leonard_73 (DE2), MelBins_75 (DE2), Phauci_65 (DE2), Phinally_73 (DE2),

Start 13:

- Found in 12 of 36 (33.3%) of genes in pham
- Manual Annotations of this start: 9 of 33
- Called 100.0% of time when present
- Phage (with cluster) where this start called: APunk_73 (DE4), Abblin_73 (DE4), Delrey21_74 (DE4), DoctorFroggo_74 (DE4), Natkenzie_73 (DE4), Sampson_75 (DE4), Scioto_73 (DE4), Tardus_74 (DE4), Verity_74 (DE4), ViaConlectus_73 (DE4), Zipp_74 (DE4), Zitch_75 (DE4),

Start 14:

- Found in 15 of 36 (41.7%) of genes in pham
- Manual Annotations of this start: 15 of 33
- Called 100.0% of time when present
- Phage (with cluster) where this start called: Ayotoya_57 (DI), BetterKatz_56 (DI), Bock_57 (DI), Brylie_56 (DI), Chop_57 (DI), DelRio_57 (DI), Francois_56 (DI), GrandSlam_57 (DI), Hamood_57 (DI), Mulch_56 (DI), Nadeem_56 (DI), NancyRae_55 (DI), Parada_56 (DI), Pimento_58 (DI), WheatThin_55 (DI),

Start 25:

- Found in 1 of 36 (2.8%) of genes in pham
- Manual Annotations of this start: 1 of 33
- Called 100.0% of time when present
- Phage (with cluster) where this start called: Belphegor_69 (DE),

Summary by clusters:

There are 4 clusters represented in this pham: DE2, DE, DE4, DI,

Info for manual annotations of cluster DE:

- Start number 25 was manually annotated 1 time for cluster DE.

Info for manual annotations of cluster DE2:

- Start number 12 was manually annotated 8 times for cluster DE2.

Info for manual annotations of cluster DE4:

- Start number 13 was manually annotated 9 times for cluster DE4.

Info for manual annotations of cluster DI:

- Start number 14 was manually annotated 15 times for cluster DI.

Gene Information:

Gene: APunk_73 Start: 53717, Stop: 53935, Start Num: 13
Candidate Starts for APunk_73:
(7, 53558), (9, 53594), (Start: 13 @53717 has 9 MA's), (17, 53771), (18, 53789), (19, 53825), (24, 53885),

Gene: Abblin_73 Start: 53875, Stop: 54093, Start Num: 13
Candidate Starts for Abblin_73:
(7, 53716), (9, 53752), (Start: 13 @53875 has 9 MA's), (17, 53929), (18, 53947), (19, 53983), (24, 54043),

Gene: Ali17_70 Start: 52881, Stop: 53075, Start Num: 12
Candidate Starts for Ali17_70:
(6, 52686), (8, 52752), (Start: 12 @52881 has 8 MA's), (16, 52905), (17, 52938),

Gene: Ayotoya_57 Start: 39666, Stop: 39851, Start Num: 14
Candidate Starts for Ayotoya_57:
(Start: 14 @39666 has 15 MA's), (17, 39705), (19, 39756), (22, 39774),

Gene: Belphegor_69 Start: 54091, Stop: 54324, Start Num: 25
Candidate Starts for Belphegor_69:
(8, 53758), (11, 53839), (20, 54022), (21, 54031), (Start: 25 @54091 has 1 MA's), (26, 54178), (27, 54214), (28, 54229), (29, 54274), (30, 54313),

Gene: BetterKatz_56 Start: 38865, Stop: 39053, Start Num: 14
Candidate Starts for BetterKatz_56:
(Start: 14 @38865 has 15 MA's), (17, 38904), (19, 38955), (22, 38973),

Gene: Bock_57 Start: 38898, Stop: 39083, Start Num: 14
Candidate Starts for Bock_57:
(Start: 14 @38898 has 15 MA's), (17, 38937), (19, 38988), (22, 39006),

Gene: Brylie_56 Start: 38646, Stop: 38834, Start Num: 14
Candidate Starts for Brylie_56:
(Start: 14 @38646 has 15 MA's), (17, 38685), (19, 38736), (22, 38754),

Gene: Chop_57 Start: 39417, Stop: 39602, Start Num: 14
Candidate Starts for Chop_57:
(Start: 14 @39417 has 15 MA's), (17, 39456), (19, 39507), (22, 39525),

Gene: DelRio_57 Start: 39828, Stop: 40013, Start Num: 14
Candidate Starts for DelRio_57:
(Start: 14 @39828 has 15 MA's), (17, 39867), (19, 39918), (22, 39936),

Gene: Delrey21_74 Start: 55666, Stop: 55884, Start Num: 13
Candidate Starts for Delrey21_74:
(1, 55273), (2, 55282), (3, 55354), (4, 55363), (5, 55369), (7, 55504), (9, 55540), (10, 55561), (Start: 13 @55666 has 9 MA's), (19, 55774), (23, 55813), (24, 55834),

Gene: DoctorFroggo_74 Start: 55666, Stop: 55884, Start Num: 13
Candidate Starts for DoctorFroggo_74:
(1, 55273), (2, 55282), (3, 55354), (4, 55363), (5, 55369), (7, 55504), (9, 55540), (10, 55561), (Start: 13 @55666 has 9 MA's), (19, 55774), (23, 55813), (24, 55834),

Gene: EMoore_71 Start: 54322, Stop: 54513, Start Num: 12

Candidate Starts for EMoore_71:

(Start: 12 @54322 has 8 MA's), (15, 54340),

Gene: Francois_56 Start: 38904, Stop: 39092, Start Num: 14

Candidate Starts for Francois_56:

(Start: 14 @38904 has 15 MA's), (17, 38943), (19, 38994), (22, 39012),

Gene: GrandSlam_57 Start: 39417, Stop: 39602, Start Num: 14

Candidate Starts for GrandSlam_57:

(Start: 14 @39417 has 15 MA's), (17, 39456), (19, 39507), (22, 39525),

Gene: Hamood_57 Start: 39417, Stop: 39602, Start Num: 14

Candidate Starts for Hamood_57:

(Start: 14 @39417 has 15 MA's), (17, 39456), (19, 39507), (22, 39525),

Gene: Hans_74 Start: 53754, Stop: 53948, Start Num: 12

Candidate Starts for Hans_74:

(8, 53625), (Start: 12 @53754 has 8 MA's), (16, 53778),

Gene: Inspectinfecti_74 Start: 53728, Stop: 53922, Start Num: 12

Candidate Starts for Inspectinfecti_74:

(8, 53599), (Start: 12 @53728 has 8 MA's), (16, 53752),

Gene: Leonard_73 Start: 53791, Stop: 53985, Start Num: 12

Candidate Starts for Leonard_73:

(8, 53662), (Start: 12 @53791 has 8 MA's), (16, 53815),

Gene: MelBins_75 Start: 53996, Stop: 54190, Start Num: 12

Candidate Starts for MelBins_75:

(Start: 12 @53996 has 8 MA's), (16, 54020),

Gene: Mulch_56 Start: 38646, Stop: 38834, Start Num: 14

Candidate Starts for Mulch_56:

(Start: 14 @38646 has 15 MA's), (17, 38685), (19, 38736), (22, 38754),

Gene: Nadeem_56 Start: 38634, Stop: 38822, Start Num: 14

Candidate Starts for Nadeem_56:

(Start: 14 @38634 has 15 MA's), (17, 38673), (19, 38724), (22, 38742),

Gene: NancyRae_55 Start: 38632, Stop: 38817, Start Num: 14

Candidate Starts for NancyRae_55:

(Start: 14 @38632 has 15 MA's), (17, 38671), (19, 38722), (22, 38740),

Gene: Natkenzie_73 Start: 53875, Stop: 54093, Start Num: 13

Candidate Starts for Natkenzie_73:

(7, 53716), (9, 53752), (Start: 13 @53875 has 9 MA's), (17, 53929), (18, 53947), (19, 53983), (24, 54043),

Gene: Parada_56 Start: 38646, Stop: 38834, Start Num: 14

Candidate Starts for Parada_56:

(Start: 14 @38646 has 15 MA's), (17, 38685), (19, 38736), (22, 38754),

Gene: Phauci_65 Start: 50831, Stop: 51025, Start Num: 12
Candidate Starts for Phauci_65:
(8, 50702), (Start: 12 @50831 has 8 MA's), (16, 50855), (17, 50888),

Gene: Phinally_73 Start: 53788, Stop: 53982, Start Num: 12
Candidate Starts for Phinally_73:
(8, 53659), (Start: 12 @53788 has 8 MA's), (16, 53812),

Gene: Pimento_58 Start: 38545, Stop: 38730, Start Num: 14
Candidate Starts for Pimento_58:
(Start: 14 @38545 has 15 MA's), (17, 38584), (19, 38635), (22, 38653),

Gene: Sampson_75 Start: 54026, Stop: 54244, Start Num: 13
Candidate Starts for Sampson_75:
(7, 53867), (9, 53903), (Start: 13 @54026 has 9 MA's), (17, 54080), (18, 54098), (19, 54134), (24, 54194),

Gene: Scioto_73 Start: 53876, Stop: 54094, Start Num: 13
Candidate Starts for Scioto_73:
(7, 53717), (9, 53753), (Start: 13 @53876 has 9 MA's), (17, 53930), (18, 53948), (19, 53984), (24, 54044),

Gene: Tardus_74 Start: 54330, Stop: 54548, Start Num: 13
Candidate Starts for Tardus_74:
(3, 54027), (4, 54036), (5, 54042), (7, 54171), (9, 54207), (Start: 13 @54330 has 9 MA's), (19, 54438), (24, 54498),

Gene: Verity_74 Start: 55666, Stop: 55884, Start Num: 13
Candidate Starts for Verity_74:
(1, 55273), (2, 55282), (3, 55354), (4, 55363), (5, 55369), (7, 55504), (9, 55540), (10, 55561), (Start: 13 @55666 has 9 MA's), (19, 55774), (23, 55813), (24, 55834),

Gene: ViaConlectus_73 Start: 52827, Stop: 53045, Start Num: 13
Candidate Starts for ViaConlectus_73:
(9, 52704), (Start: 13 @52827 has 9 MA's), (19, 52935), (24, 52995),

Gene: WheatThin_55 Start: 38634, Stop: 38822, Start Num: 14
Candidate Starts for WheatThin_55:
(Start: 14 @38634 has 15 MA's), (17, 38673), (19, 38724), (22, 38742),

Gene: Zipp_74 Start: 55254, Stop: 55472, Start Num: 13
Candidate Starts for Zipp_74:
(7, 55095), (9, 55131), (Start: 13 @55254 has 9 MA's), (17, 55308), (18, 55326), (19, 55362), (24, 55422),

Gene: Zitch_75 Start: 53704, Stop: 53922, Start Num: 13
Candidate Starts for Zitch_75:
(7, 53545), (9, 53581), (Start: 13 @53704 has 9 MA's), (19, 53812), (24, 53872),