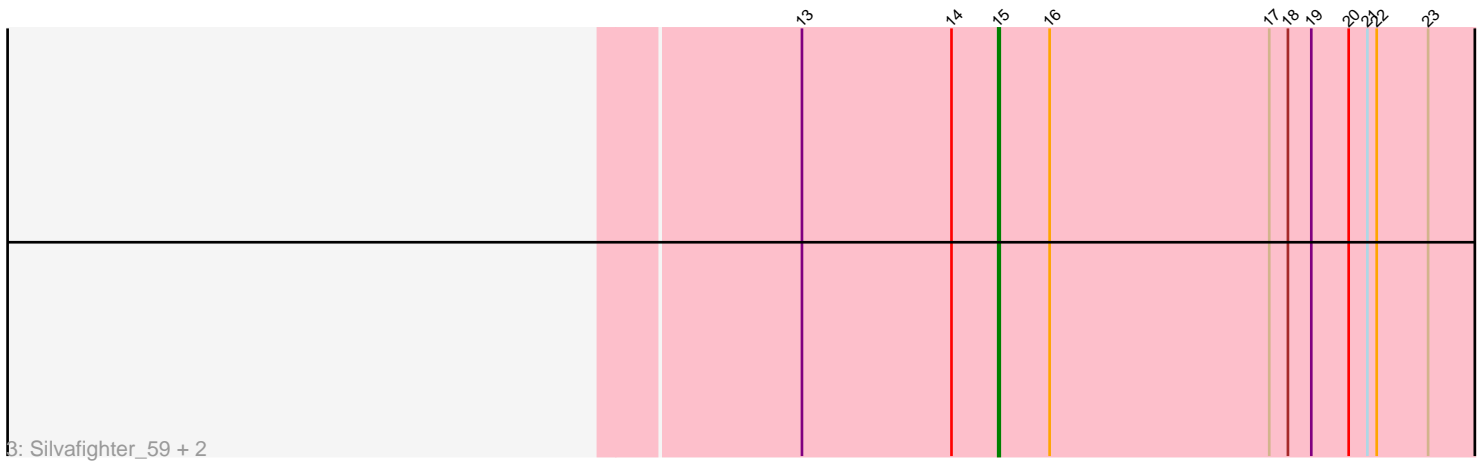
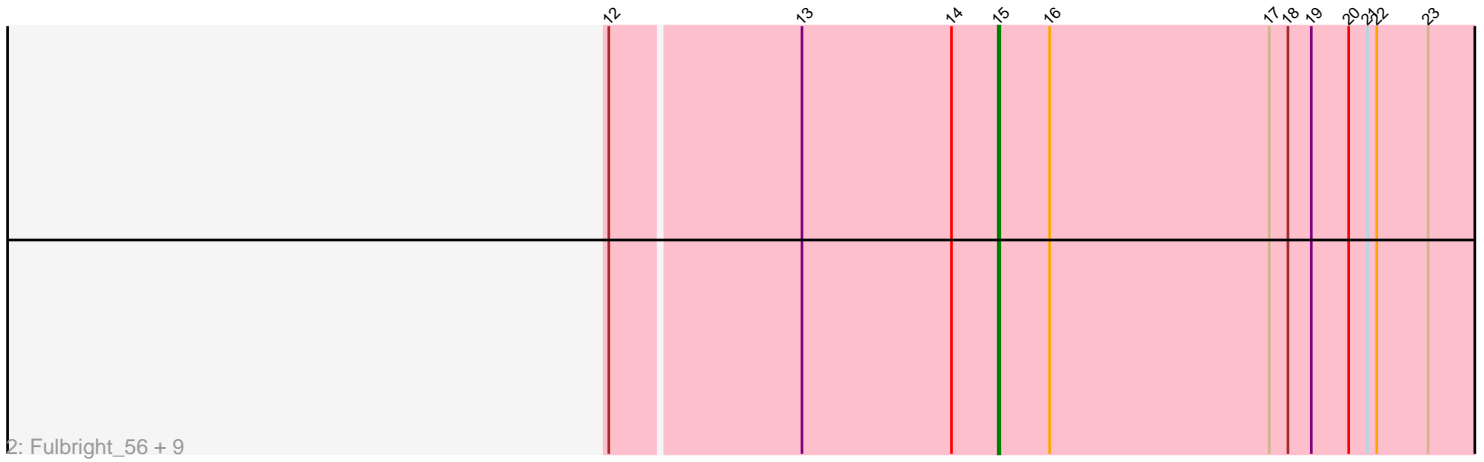
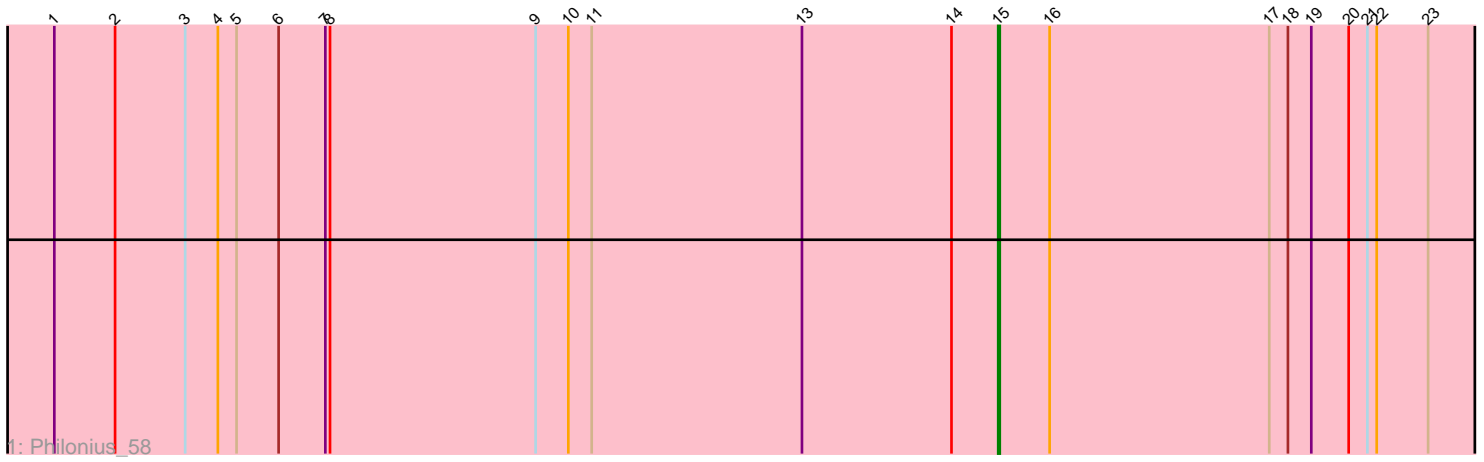


Pham 220259



Note: Tracks are now grouped by subcluster and scaled. Switching in subcluster is indicated by changes in track color. Track scale is now set by default to display the region 30 bp upstream of start 1 to 30 bp downstream of the last possible start. If this default region is judged to be packed too tightly with annotated starts, the track will be further scaled to only show that region of the ORF with annotated starts. This action will be indicated by adding "Zoomed" to the title. For starts, yellow indicates the location of called starts comprised solely of Glimmer/GeneMark auto-annotations, green indicates the location of called starts with at least 1 manual gene annotation.

## Pham 220259 Report

This analysis was run 03/28/25 on database version 593.

Pham number 220259 has 14 members, 0 are drafts.

Phages represented in each track:

- Track 1 : Philonius\_58
- Track 2 : Fulbright\_56, Pipsqueaks\_59, Parmesanjohn\_58, Carcharodon\_58, Schnauzer\_59, Gex\_59, Xerxes\_58, Smurph\_58, Phloss\_56, Magsby\_58
- Track 3 : Silvafighter\_59, Melville\_63, Duplicity\_56

### ***Summary of Final Annotations (See graph section above for start numbers):***

The start number called the most often in the published annotations is 15, it was called in 14 of the 14 non-draft genes in the pham.

Genes that call this "Most Annotated" start:

- Carcharodon\_58, Duplicity\_56, Fulbright\_56, Gex\_59, Magsby\_58, Melville\_63, Parmesanjohn\_58, Philonius\_58, Phloss\_56, Pipsqueaks\_59, Schnauzer\_59, Silvafighter\_59, Smurph\_58, Xerxes\_58,

Genes that have the "Most Annotated" start but do not call it:

- 

Genes that do not have the "Most Annotated" start:

- 

### **Summary by start number:**

Start 15:

- Found in 14 of 14 ( 100.0% ) of genes in pham
- Manual Annotations of this start: 14 of 14
- Called 100.0% of time when present
- Phage (with cluster) where this start called: Carcharodon\_58 (N), Duplicity\_56 (N), Fulbright\_56 (N), Gex\_59 (N), Magsby\_58 (N), Melville\_63 (N), Parmesanjohn\_58 (N), Philonius\_58 (N), Phloss\_56 (N), Pipsqueaks\_59 (N), Schnauzer\_59 (N), Silvafighter\_59 (N), Smurph\_58 (N), Xerxes\_58 (N),

### **Summary by clusters:**

There is one cluster represented in this pham: N

Info for manual annotations of cluster N:

•Start number 15 was manually annotated 14 times for cluster N.

**Gene Information:**

Gene: Carcharodon\_58 Start: 37518, Stop: 37880, Start Num: 15

Candidate Starts for Carcharodon\_58:

(12, 37275), (13, 37392), (14, 37488), (Start: 15 @37518 has 14 MA's), (16, 37551), (17, 37692), (18, 37704), (19, 37719), (20, 37743), (21, 37755), (22, 37761), (23, 37794),

Gene: Duplicity\_56 Start: 36775, Stop: 37137, Start Num: 15

Candidate Starts for Duplicity\_56:

(13, 36649), (14, 36745), (Start: 15 @36775 has 14 MA's), (16, 36808), (17, 36949), (18, 36961), (19, 36976), (20, 37000), (21, 37012), (22, 37018), (23, 37051),

Gene: Fulbright\_56 Start: 36212, Stop: 36574, Start Num: 15

Candidate Starts for Fulbright\_56:

(12, 35969), (13, 36086), (14, 36182), (Start: 15 @36212 has 14 MA's), (16, 36245), (17, 36386), (18, 36398), (19, 36413), (20, 36437), (21, 36449), (22, 36455), (23, 36488),

Gene: Gex\_59 Start: 37534, Stop: 37896, Start Num: 15

Candidate Starts for Gex\_59:

(12, 37291), (13, 37408), (14, 37504), (Start: 15 @37534 has 14 MA's), (16, 37567), (17, 37708), (18, 37720), (19, 37735), (20, 37759), (21, 37771), (22, 37777), (23, 37810),

Gene: Magsby\_58 Start: 37535, Stop: 37897, Start Num: 15

Candidate Starts for Magsby\_58:

(12, 37292), (13, 37409), (14, 37505), (Start: 15 @37535 has 14 MA's), (16, 37568), (17, 37709), (18, 37721), (19, 37736), (20, 37760), (21, 37772), (22, 37778), (23, 37811),

Gene: Melville\_63 Start: 37089, Stop: 37451, Start Num: 15

Candidate Starts for Melville\_63:

(13, 36963), (14, 37059), (Start: 15 @37089 has 14 MA's), (16, 37122), (17, 37263), (18, 37275), (19, 37290), (20, 37314), (21, 37326), (22, 37332), (23, 37365),

Gene: Parmesanjohn\_58 Start: 37538, Stop: 37900, Start Num: 15

Candidate Starts for Parmesanjohn\_58:

(12, 37295), (13, 37412), (14, 37508), (Start: 15 @37538 has 14 MA's), (16, 37571), (17, 37712), (18, 37724), (19, 37739), (20, 37763), (21, 37775), (22, 37781), (23, 37814),

Gene: Philonius\_58 Start: 37703, Stop: 38065, Start Num: 15

Candidate Starts for Philonius\_58:

(1, 37097), (2, 37136), (3, 37181), (4, 37202), (5, 37214), (6, 37241), (7, 37271), (8, 37274), (9, 37406), (10, 37427), (11, 37442), (13, 37577), (14, 37673), (Start: 15 @37703 has 14 MA's), (16, 37736), (17, 37877), (18, 37889), (19, 37904), (20, 37928), (21, 37940), (22, 37946), (23, 37979),

Gene: Phloss\_56 Start: 36945, Stop: 37307, Start Num: 15

Candidate Starts for Phloss\_56:

(12, 36702), (13, 36819), (14, 36915), (Start: 15 @36945 has 14 MA's), (16, 36978), (17, 37119), (18, 37131), (19, 37146), (20, 37170), (21, 37182), (22, 37188), (23, 37221),

Gene: Pipsqueaks\_59 Start: 37516, Stop: 37878, Start Num: 15

Candidate Starts for Pipsqueaks\_59:

(12, 37273), (13, 37390), (14, 37486), (Start: 15 @37516 has 14 MA's), (16, 37549), (17, 37690), (18, 37702), (19, 37717), (20, 37741), (21, 37753), (22, 37759), (23, 37792),

Gene: Schnauzer\_59 Start: 37538, Stop: 37900, Start Num: 15

Candidate Starts for Schnauzer\_59:

(12, 37295), (13, 37412), (14, 37508), (Start: 15 @37538 has 14 MA's), (16, 37571), (17, 37712), (18, 37724), (19, 37739), (20, 37763), (21, 37775), (22, 37781), (23, 37814),

Gene: Silvafighter\_59 Start: 37081, Stop: 37443, Start Num: 15

Candidate Starts for Silvafighter\_59:

(13, 36955), (14, 37051), (Start: 15 @37081 has 14 MA's), (16, 37114), (17, 37255), (18, 37267), (19, 37282), (20, 37306), (21, 37318), (22, 37324), (23, 37357),

Gene: Smurph\_58 Start: 37538, Stop: 37900, Start Num: 15

Candidate Starts for Smurph\_58:

(12, 37295), (13, 37412), (14, 37508), (Start: 15 @37538 has 14 MA's), (16, 37571), (17, 37712), (18, 37724), (19, 37739), (20, 37763), (21, 37775), (22, 37781), (23, 37814),

Gene: Xerxes\_58 Start: 37535, Stop: 37897, Start Num: 15

Candidate Starts for Xerxes\_58:

(12, 37292), (13, 37409), (14, 37505), (Start: 15 @37535 has 14 MA's), (16, 37568), (17, 37709), (18, 37721), (19, 37736), (20, 37760), (21, 37772), (22, 37778), (23, 37811),