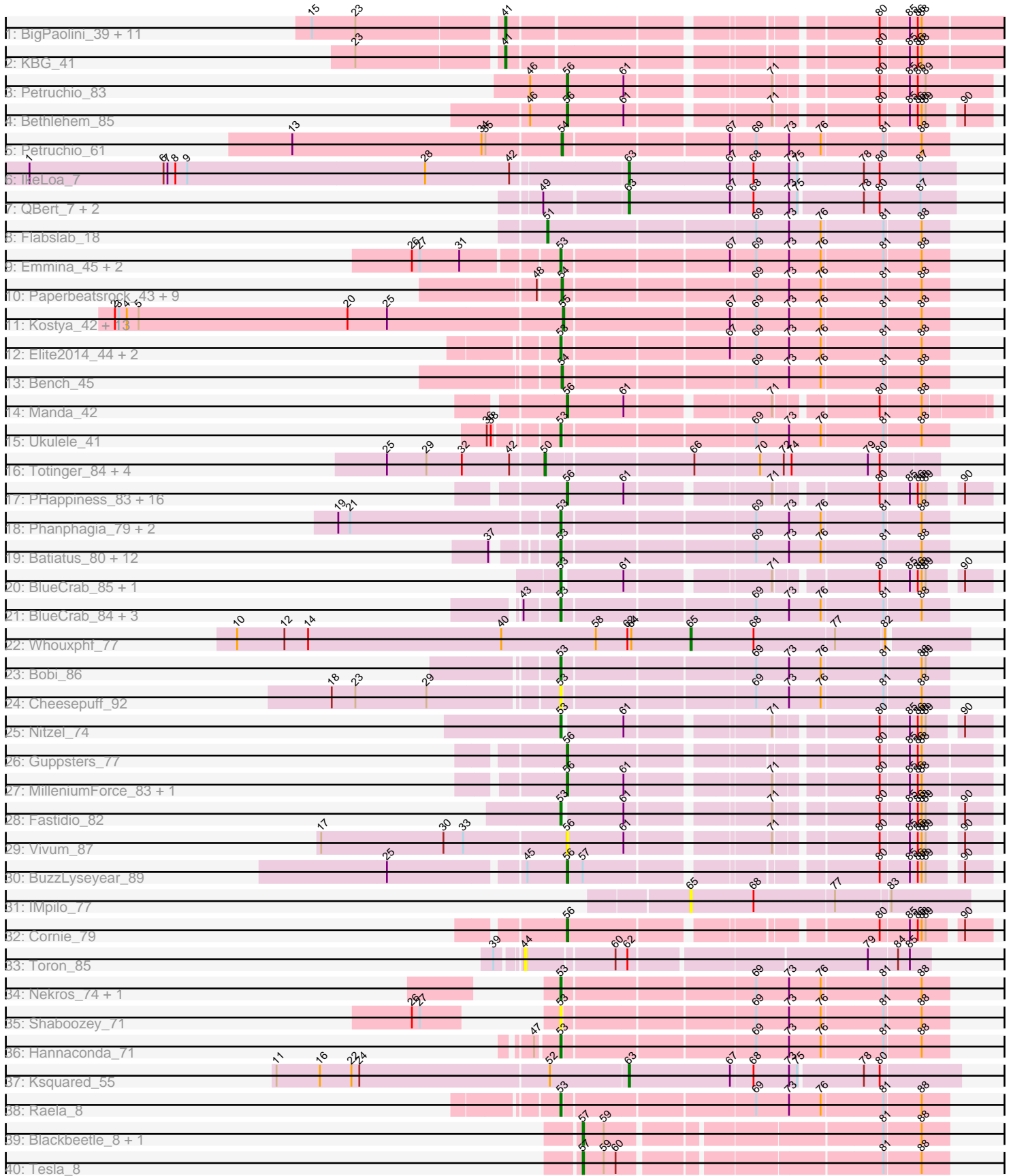


Pham 221250



Note: Tracks are now grouped by subcluster and scaled. Switching in subcluster is indicated by changes in track color. Track scale is now set by default to display the region 30 bp upstream of start 1 to 30 bp downstream of the last possible start. If this default region is judged to be packed too tightly with annotated starts, the track will be further scaled to only show that region of the ORF with annotated starts. This action will be indicated by adding "Zoomed" to the title. For starts, yellow indicates the location of called starts comprised solely of Glimmer/GeneMark auto-annotations, green indicates the location of called starts with at least 1 manual gene annotation.

Pham 221250 Report

This analysis was run 03/28/25 on database version 593.

Pham number 221250 has 120 members, 14 are drafts.

Phages represented in each track:

- Track 1 : BigPaolini_39, ILeeKay_42, Cueylyss_40, LunarLander_42, Eyeball_40, Graduation_42, Doom_40, Wilkins_39, Topgun_39, Phlippers_38, Licorice_42, Smairt_41
- Track 2 : KBG_41
- Track 3 : Petruccio_83
- Track 4 : Bethlehem_85
- Track 5 : Petruccio_61
- Track 6 : IkeLoa_7
- Track 7 : QBert_7, RoMag_6, JulietS_7
- Track 8 : Flabslab_18
- Track 9 : Emmina_45, Teaspoon_46, Porky_43
- Track 10 : Paperbeatsrock_43, SophKB_41, BadStone_42, Dumbo_44, Tarkin_43, Easy2Say_45, Dusk_42, NelitzaMV_41, Pharsalus_42, Henry_43
- Track 11 : Kostya_42, Nimrod_44, Phaux_43, Murica_43, xkcd_45, Palpatine_44, FireRed_44, HufflyPuff_43, Misfit_43, PhatBacter_44, Terminus_43, Petra64142_46, Policronamos_44, BugsBunny_42
- Track 12 : Elite2014_44, Lilpickle_44, ChosenOne_45
- Track 13 : Bench_45
- Track 14 : Manda_42
- Track 15 : Ukulele_41
- Track 16 : Totinger_84, LittleShirley_88, GigiOuiOui_76, Starcevich_82, Vivum_84
- Track 17 : PHappiness_83, Zerg_83, Nimbo_75, RitaG_83, Minnie_78, DotProduct_77, Geralt_76, Hamulus_81, Fruitloop_79, Filuzino_83, OldBen_80, Leperchaun_81, Sandalphon_76, Deb65_76, JoeyJr_83, Daenerys_82, StAnnes_84
- Track 18 : Phanphagia_79, Kingsley_84, Shauna1_80
- Track 19 : Batiatus_80, Ms6_80, XFactor_76, Ardmore_66, ScottMcG_17, Chuckly_78, Shifa_12, HyRo_13, DLane_82, Stubby_16, Eureka_42, Goku_42, Manda_44
- Track 20 : BlueCrab_85, Pacc40_79
- Track 21 : BlueCrab_84, Akhila_77, MilanaBonita_76, Pacc40_78
- Track 22 : Whouxphf_77
- Track 23 : Bobi_86
- Track 24 : Cheesepuff_92
- Track 25 : Nitzel_74
- Track 26 : Guppsters_77
- Track 27 : MilleniumForce_83, Pollywog_81
- Track 28 : Fastidio_82

- Track 29 : Vivum_87
- Track 30 : BuzzLyseyear_89
- Track 31 : IMpilo_77
- Track 32 : Cornie_79
- Track 33 : Toron_85
- Track 34 : Nekros_74, Phalconet_77
- Track 35 : Shaboozey_71
- Track 36 : Hannaconda_71
- Track 37 : Ksquared_55
- Track 38 : Raela_8
- Track 39 : Blackbeetle_8, Poise_8
- Track 40 : Tesla_8

Summary of Final Annotations (See graph section above for start numbers):

The start number called the most often in the published annotations is 53, it was called in 33 of the 106 non-draft genes in the pham.

Genes that call this "Most Annotated" start:

- Akhila_77, Ardmore_66, Batiatus_80, BlueCrab_84, BlueCrab_85, Bobi_86, CheesePuff_92, ChosenOne_45, Chuckly_78, DLane_82, Elite2014_44, Emmina_45, Eureka_42, Fastidio_82, Goku_42, Hannaconda_71, HyRo_13, Kingsley_84, LilPickle_44, Manda_44, MilanaBonita_76, Ms6_80, Nekros_74, Nitzel_74, Pacc40_78, Pacc40_79, Phalconet_77, Phanphagia_79, Porky_43, Raela_8, ScottMcG_17, Shaboozey_71, Shauna1_80, Shifa_12, Stubby_16, Teaspoon_46, Ukulele_41, XFactor_76,

Genes that have the "Most Annotated" start but do not call it:

-

Genes that do not have the "Most Annotated" start:

- BadStone_42, Bench_45, Bethlehem_85, BigPaolini_39, Blackbeetle_8, BugsBunny_42, BuzzLyseyear_89, Cornie_79, Cueyllyss_40, Daenerys_82, Deb65_76, Doom_40, DotProduct_77, Dumbo_44, Dusk_42, Easy2Say_45, Eyeball_40, Filuzino_83, FireRed_44, Flabslab_18, Fruitloop_79, Geralt_76, GigiOuiOui_76, Graduation_42, Guppsters_77, Hamulus_81, Henry_43, HufflyPuff_43, ILeeKay_42, IMpilo_77, IkeLoa_7, JoeyJr_83, JulietS_7, KBG_41, Kostya_42, Ksquared_55, Leperchaun_81, Licorice_42, LittleShirley_88, LunarLander_42, Manda_42, MilleniumForce_83, Minnie_78, Misfit_43, Murica_43, NelitzaMV_41, Nimbo_75, Nimrod_44, OldBen_80, PHappiness_83, Palpatine_44, Paperbeatsrock_43, Petra64142_46, Petruccio_61, Petruccio_83, Pharsalus_42, PhatBacter_44, Phaux_43, Phlippers_38, Poise_8, Policronamos_44, Pollywog_81, QBert_7, RitaG_83, RoMag_6, Sandalphon_76, Smairt_41, SophKB_41, StAnnes_84, Starcevich_82, Tarkin_43, Terminus_43, Tesla_8, Topgun_39, Toron_85, Totinger_84, Vivum_84, Vivum_87, Whouxphf_77, Wilkins_39, Zerg_83, xkcd_45,

Summary by start number:

Start 41:

- Found in 13 of 120 (10.8%) of genes in pham
- Manual Annotations of this start: 11 of 106
- Called 100.0% of time when present
- Phage (with cluster) where this start called: BigPaolini_39 (A1), Cueylyss_40 (A1), Doom_40 (A1), Eyeball_40 (A1), Graduation_42 (A1), ILeeKay_42 (A1), KBG_41 (A1), Licorice_42 (A1), LunarLander_42 (A1), Phlippers_38 (A1), Smairt_41 (A1), Topgun_39 (A1), Wilkins_39 (A1),

Start 44:

- Found in 1 of 120 (0.8%) of genes in pham
- No Manual Annotations of this start.
- Called 100.0% of time when present
- Phage (with cluster) where this start called: Toron_85 (F6),

Start 50:

- Found in 5 of 120 (4.2%) of genes in pham
- Manual Annotations of this start: 4 of 106
- Called 100.0% of time when present
- Phage (with cluster) where this start called: GigiOuiOui_76 (F1), LittleShirley_88 (F1), Starcevich_82 (F1), Totinger_84 (F1), Vivum_84 (F1),

Start 51:

- Found in 1 of 120 (0.8%) of genes in pham
- Manual Annotations of this start: 1 of 106
- Called 100.0% of time when present
- Phage (with cluster) where this start called: Flabslab_18 (C1),

Start 53:

- Found in 38 of 120 (31.7%) of genes in pham
- Manual Annotations of this start: 33 of 106
- Called 100.0% of time when present
- Phage (with cluster) where this start called: Akhila_77 (F1), Ardmore_66 (F1), Batiatus_80 (F1), BlueCrab_84 (F1), BlueCrab_85 (F1), Bobi_86 (F1), CheesePuff_92 (F1), ChosenOne_45 (E), Chuckly_78 (F1), DLane_82 (F1), Elite2014_44 (E), Emmina_45 (E), Eureka_42 (E), Fastidio_82 (F1), Goku_42 (E), Hannaconda_71 (J), HyRo_13 (C1), Kingsley_84 (F1), Lilpickle_44 (E), Manda_44 (E), MilanaBonita_76 (F1), Ms6_80 (F1), Nekros_74 (J), Nitzel_74 (F1), Pacc40_78 (F1), Pacc40_79 (F1), Phalconet_77 (F1), Phanphagia_79 (F1), Porky_43 (E), Raela_8 (S), ScottMcG_17 (C1), Shaboozey_71 (J), Shauna1_80 (F1), Shifa_12 (C1), Stubby_16 (C1), Teaspoon_46 (E), Ukulele_41 (E), XFactor_76 (F1),

Start 54:

- Found in 12 of 120 (10.0%) of genes in pham
- Manual Annotations of this start: 12 of 106
- Called 100.0% of time when present
- Phage (with cluster) where this start called: BadStone_42 (E), Bench_45 (E), Dumbo_44 (E), Dusk_42 (E), Easy2Say_45 (E), Henry_43 (E), NelitzaMV_41 (E), Paperbeatsrock_43 (E), Petruccio_61 (A1), Pharsalus_42 (E), SophKB_41 (E), Tarkin_43 (E),

Start 55:

- Found in 14 of 120 (11.7%) of genes in pham
- Manual Annotations of this start: 12 of 106

- Called 100.0% of time when present
- Phage (with cluster) where this start called: BugsBunny_42 (E), FireRed_44 (E), HuffyPuff_43 (E), Kostya_42 (E), Misfit_43 (E), Murica_43 (E), Nimrod_44 (E), Palpatine_44 (E), Petra64142_46 (E), PhatBacter_44 (E), Phaux_43 (E), Policronamos_44 (E), Terminus_43 (E), xkcd_45 (E),

Start 56:

- Found in 26 of 120 (21.7%) of genes in pham
- Manual Annotations of this start: 25 of 106
- Called 100.0% of time when present
- Phage (with cluster) where this start called: Bethlehem_85 (A1), BuzzLyseyear_89 (F1), Cornie_79 (F5), Daenerys_82 (F1), Deb65_76 (F1), DotProduct_77 (F1), Filuzino_83 (F1), Fruitloop_79 (F1), Geralt_76 (F1), Guppsters_77 (F1), Hamulus_81 (F1), JoeyJr_83 (F1), Leperchaun_81 (F1), Manda_42 (E), MilleniumForce_83 (F1), Minnie_78 (F1), Nimbo_75 (F1), OldBen_80 (F1), PHappiness_83 (F1), Petruccio_83 (A1), Pollywog_81 (F1), RitaG_83 (F1), Sandalphon_76 (F1), StAnnes_84 (F1), Vivum_87 (F1), Zerg_83 (F1),

Start 57:

- Found in 4 of 120 (3.3%) of genes in pham
- Manual Annotations of this start: 3 of 106
- Called 75.0% of time when present
- Phage (with cluster) where this start called: Blackbeetle_8 (S), Poise_8 (S), Tesla_8 (S),

Start 63:

- Found in 5 of 120 (4.2%) of genes in pham
- Manual Annotations of this start: 4 of 106
- Called 100.0% of time when present
- Phage (with cluster) where this start called: IkeLoa_7 (C1), JulietS_7 (C1), Ksquared_55 (P1), QBert_7 (C1), RoMag_6 (C1),

Start 65:

- Found in 2 of 120 (1.7%) of genes in pham
- Manual Annotations of this start: 1 of 106
- Called 100.0% of time when present
- Phage (with cluster) where this start called: IMpilo_77 (F1), Whouxphf_77 (F1),

Summary by clusters:

There are 9 clusters represented in this pham: F1, P1, E, F5, F6, J, A1, S, C1,

Info for manual annotations of cluster A1:

- Start number 41 was manually annotated 11 times for cluster A1.
- Start number 54 was manually annotated 1 time for cluster A1.
- Start number 56 was manually annotated 2 times for cluster A1.

Info for manual annotations of cluster C1:

- Start number 51 was manually annotated 1 time for cluster C1.
- Start number 53 was manually annotated 4 times for cluster C1.
- Start number 63 was manually annotated 3 times for cluster C1.

Info for manual annotations of cluster E:

- Start number 53 was manually annotated 10 times for cluster E.
- Start number 54 was manually annotated 11 times for cluster E.
- Start number 55 was manually annotated 12 times for cluster E.
- Start number 56 was manually annotated 1 time for cluster E.

Info for manual annotations of cluster F1:

- Start number 50 was manually annotated 4 times for cluster F1.
- Start number 53 was manually annotated 17 times for cluster F1.
- Start number 56 was manually annotated 21 times for cluster F1.
- Start number 65 was manually annotated 1 time for cluster F1.

Info for manual annotations of cluster F5:

- Start number 56 was manually annotated 1 time for cluster F5.

Info for manual annotations of cluster J:

- Start number 53 was manually annotated 1 time for cluster J.

Info for manual annotations of cluster P1:

- Start number 63 was manually annotated 1 time for cluster P1.

Info for manual annotations of cluster S:

- Start number 53 was manually annotated 1 time for cluster S.
- Start number 57 was manually annotated 3 times for cluster S.

Gene Information:

Gene: Akhila_77 Start: 47736, Stop: 48011, Start Num: 53

Candidate Starts for Akhila_77:

(43, 47712), (Start: 53 @47736 has 33 MA's), (69, 47871), (73, 47895), (76, 47919), (81, 47964), (88, 47991),

Gene: Ardmore_66 Start: 43412, Stop: 43687, Start Num: 53

Candidate Starts for Ardmore_66:

(37, 43376), (Start: 53 @43412 has 33 MA's), (69, 43547), (73, 43571), (76, 43595), (81, 43640), (88, 43667),

Gene: BadStone_42 Start: 35749, Stop: 35474, Start Num: 54

Candidate Starts for BadStone_42:

(48, 35764), (Start: 54 @35749 has 12 MA's), (69, 35614), (73, 35590), (76, 35566), (81, 35521), (88, 35494),

Gene: Batiatus_80 Start: 48821, Stop: 49096, Start Num: 53

Candidate Starts for Batiatus_80:

(37, 48785), (Start: 53 @48821 has 33 MA's), (69, 48956), (73, 48980), (76, 49004), (81, 49049), (88, 49076),

Gene: Bench_45 Start: 35386, Stop: 35111, Start Num: 54

Candidate Starts for Bench_45:

(Start: 54 @35386 has 12 MA's), (69, 35251), (73, 35227), (76, 35203), (81, 35158), (88, 35131),

Gene: Bethlehem_85 Start: 50979, Stop: 50701, Start Num: 56

Candidate Starts for Bethlehem_85:

(46, 51003), (Start: 56 @50979 has 25 MA's), (61, 50937), (71, 50841), (80, 50775), (85, 50754), (86, 50748), (88, 50745), (89, 50742), (90, 50721),

Gene: BigPaolini_39 Start: 30429, Stop: 30067, Start Num: 41

Candidate Starts for BigPaolini_39:

(15, 30567), (23, 30534), (Start: 41 @30429 has 11 MA's), (80, 30186), (85, 30165), (86, 30159), (88, 30156),

Gene: Blackbeetle_8 Start: 2539, Stop: 2790, Start Num: 57

Candidate Starts for Blackbeetle_8:

(Start: 57 @2539 has 3 MA's), (59, 2554), (81, 2743), (88, 2770),

Gene: BlueCrab_85 Start: 50477, Stop: 50755, Start Num: 53

Candidate Starts for BlueCrab_85:

(Start: 53 @50477 has 33 MA's), (61, 50519), (71, 50615), (80, 50681), (85, 50702), (86, 50708), (88, 50711), (89, 50714), (90, 50735),

Gene: BlueCrab_84 Start: 50205, Stop: 50480, Start Num: 53

Candidate Starts for BlueCrab_84:

(43, 50181), (Start: 53 @50205 has 33 MA's), (69, 50340), (73, 50364), (76, 50388), (81, 50433), (88, 50460),

Gene: Bobi_86 Start: 50927, Stop: 51202, Start Num: 53

Candidate Starts for Bobi_86:

(Start: 53 @50927 has 33 MA's), (69, 51062), (73, 51086), (76, 51110), (81, 51155), (88, 51182), (89, 51185),

Gene: BugsBunny_42 Start: 35155, Stop: 34877, Start Num: 55

Candidate Starts for BugsBunny_42:

(2, 35491), (3, 35488), (4, 35482), (5, 35473), (20, 35314), (25, 35284), (Start: 55 @35155 has 12 MA's), (67, 35035), (69, 35017), (73, 34993), (76, 34969), (81, 34924), (88, 34897),

Gene: BuzzLyseyear_89 Start: 52060, Stop: 52338, Start Num: 56

Candidate Starts for BuzzLyseyear_89:

(25, 51934), (45, 52030), (Start: 56 @52060 has 25 MA's), (Start: 57 @52072 has 3 MA's), (80, 52264), (85, 52285), (86, 52291), (88, 52294), (89, 52297), (90, 52318),

Gene: Cheesepuff_92 Start: 49461, Stop: 49736, Start Num: 53

Candidate Starts for Cheesepuff_92:

(18, 49299), (23, 49317), (29, 49371), (Start: 53 @49461 has 33 MA's), (69, 49596), (73, 49620), (76, 49644), (81, 49689), (88, 49716),

Gene: ChosenOne_45 Start: 34885, Stop: 34610, Start Num: 53

Candidate Starts for ChosenOne_45:

(Start: 53 @34885 has 33 MA's), (67, 34768), (69, 34750), (73, 34726), (76, 34702), (81, 34657), (88, 34630),

Gene: Chuckly_78 Start: 46153, Stop: 46428, Start Num: 53

Candidate Starts for Chuckly_78:

(37, 46117), (Start: 53 @46153 has 33 MA's), (69, 46288), (73, 46312), (76, 46336), (81, 46381), (88, 46408),

Gene: Cornie_79 Start: 47817, Stop: 48095, Start Num: 56
Candidate Starts for Cornie_79:
(Start: 56 @47817 has 25 MA's), (80, 48021), (85, 48042), (86, 48048), (88, 48051), (89, 48054), (90, 48075),

Gene: Cueyllyss_40 Start: 32157, Stop: 31795, Start Num: 41
Candidate Starts for Cueyllyss_40:
(15, 32295), (23, 32262), (Start: 41 @32157 has 11 MA's), (80, 31914), (85, 31893), (86, 31887), (88, 31884),

Gene: DLane_82 Start: 50043, Stop: 50318, Start Num: 53
Candidate Starts for DLane_82:
(37, 50007), (Start: 53 @50043 has 33 MA's), (69, 50178), (73, 50202), (76, 50226), (81, 50271), (88, 50298),

Gene: Daenerys_82 Start: 50903, Stop: 51181, Start Num: 56
Candidate Starts for Daenerys_82:
(Start: 56 @50903 has 25 MA's), (61, 50945), (71, 51041), (80, 51107), (85, 51128), (86, 51134), (88, 51137), (89, 51140), (90, 51161),

Gene: Deb65_76 Start: 48625, Stop: 48903, Start Num: 56
Candidate Starts for Deb65_76:
(Start: 56 @48625 has 25 MA's), (61, 48667), (71, 48763), (80, 48829), (85, 48850), (86, 48856), (88, 48859), (89, 48862), (90, 48883),

Gene: Doom_40 Start: 32350, Stop: 31988, Start Num: 41
Candidate Starts for Doom_40:
(15, 32488), (23, 32455), (Start: 41 @32350 has 11 MA's), (80, 32107), (85, 32086), (86, 32080), (88, 32077),

Gene: DotProduct_77 Start: 47382, Stop: 47660, Start Num: 56
Candidate Starts for DotProduct_77:
(Start: 56 @47382 has 25 MA's), (61, 47424), (71, 47520), (80, 47586), (85, 47607), (86, 47613), (88, 47616), (89, 47619), (90, 47640),

Gene: Dumbo_44 Start: 35105, Stop: 34830, Start Num: 54
Candidate Starts for Dumbo_44:
(48, 35120), (Start: 54 @35105 has 12 MA's), (69, 34970), (73, 34946), (76, 34922), (81, 34877), (88, 34850),

Gene: Dusk_42 Start: 35409, Stop: 35134, Start Num: 54
Candidate Starts for Dusk_42:
(48, 35424), (Start: 54 @35409 has 12 MA's), (69, 35274), (73, 35250), (76, 35226), (81, 35181), (88, 35154),

Gene: Easy2Say_45 Start: 36649, Stop: 36374, Start Num: 54
Candidate Starts for Easy2Say_45:
(48, 36664), (Start: 54 @36649 has 12 MA's), (69, 36514), (73, 36490), (76, 36466), (81, 36421), (88, 36394),

Gene: Elite2014_44 Start: 34884, Stop: 34609, Start Num: 53
Candidate Starts for Elite2014_44:

(Start: 53 @34884 has 33 MA's), (67, 34767), (69, 34749), (73, 34725), (76, 34701), (81, 34656), (88, 34629),

Gene: Emmina_45 Start: 35184, Stop: 34909, Start Num: 53

Candidate Starts for Emmina_45:

(26, 35286), (27, 35280), (31, 35250), (Start: 53 @35184 has 33 MA's), (67, 35067), (69, 35049), (73, 35025), (76, 35001), (81, 34956), (88, 34929),

Gene: Eureka_42 Start: 35560, Stop: 35285, Start Num: 53

Candidate Starts for Eureka_42:

(37, 35596), (Start: 53 @35560 has 33 MA's), (69, 35425), (73, 35401), (76, 35377), (81, 35332), (88, 35305),

Gene: Eyeball_40 Start: 31827, Stop: 31465, Start Num: 41

Candidate Starts for Eyeball_40:

(15, 31965), (23, 31932), (Start: 41 @31827 has 11 MA's), (80, 31584), (85, 31563), (86, 31557), (88, 31554),

Gene: Fastidio_82 Start: 46279, Stop: 46557, Start Num: 53

Candidate Starts for Fastidio_82:

(Start: 53 @46279 has 33 MA's), (61, 46321), (71, 46417), (80, 46483), (85, 46504), (86, 46510), (88, 46513), (89, 46516), (90, 46537),

Gene: Filuzino_83 Start: 51185, Stop: 51463, Start Num: 56

Candidate Starts for Filuzino_83:

(Start: 56 @51185 has 25 MA's), (61, 51227), (71, 51323), (80, 51389), (85, 51410), (86, 51416), (88, 51419), (89, 51422), (90, 51443),

Gene: FireRed_44 Start: 35594, Stop: 35316, Start Num: 55

Candidate Starts for FireRed_44:

(2, 35930), (3, 35927), (4, 35921), (5, 35912), (20, 35753), (25, 35723), (Start: 55 @35594 has 12 MA's), (67, 35474), (69, 35456), (73, 35432), (76, 35408), (81, 35363), (88, 35336),

Gene: Flabslab_18 Start: 6033, Stop: 6323, Start Num: 51

Candidate Starts for Flabslab_18:

(Start: 51 @6033 has 1 MA's), (69, 6183), (73, 6207), (76, 6231), (81, 6276), (88, 6303),

Gene: Fruitloop_79 Start: 49022, Stop: 49300, Start Num: 56

Candidate Starts for Fruitloop_79:

(Start: 56 @49022 has 25 MA's), (61, 49064), (71, 49160), (80, 49226), (85, 49247), (86, 49253), (88, 49256), (89, 49259), (90, 49280),

Gene: Geralt_76 Start: 48623, Stop: 48901, Start Num: 56

Candidate Starts for Geralt_76:

(Start: 56 @48623 has 25 MA's), (61, 48665), (71, 48761), (80, 48827), (85, 48848), (86, 48854), (88, 48857), (89, 48860), (90, 48881),

Gene: GigiOuiOui_76 Start: 47877, Stop: 48161, Start Num: 50

Candidate Starts for GigiOuiOui_76:

(25, 47760), (29, 47790), (32, 47817), (42, 47853), (Start: 50 @47877 has 4 MA's), (66, 47982), (70, 48030), (72, 48048), (74, 48054), (79, 48111), (80, 48120),

Gene: Goku_42 Start: 35289, Stop: 35014, Start Num: 53

Candidate Starts for Goku_42:

(37, 35325), (Start: 53 @35289 has 33 MA's), (69, 35154), (73, 35130), (76, 35106), (81, 35061), (88, 35034),

Gene: Graduation_42 Start: 32744, Stop: 32382, Start Num: 41

Candidate Starts for Graduation_42:

(15, 32882), (23, 32849), (Start: 41 @32744 has 11 MA's), (80, 32501), (85, 32480), (86, 32474), (88, 32471),

Gene: Guppsters_77 Start: 47008, Stop: 47292, Start Num: 56

Candidate Starts for Guppsters_77:

(Start: 56 @47008 has 25 MA's), (80, 47212), (85, 47233), (86, 47239), (88, 47242),

Gene: Hamulus_81 Start: 48864, Stop: 49142, Start Num: 56

Candidate Starts for Hamulus_81:

(Start: 56 @48864 has 25 MA's), (61, 48906), (71, 49002), (80, 49068), (85, 49089), (86, 49095), (88, 49098), (89, 49101), (90, 49122),

Gene: Hannaconda_71 Start: 46308, Stop: 46033, Start Num: 53

Candidate Starts for Hannaconda_71:

(47, 46323), (Start: 53 @46308 has 33 MA's), (69, 46173), (73, 46149), (76, 46125), (81, 46080), (88, 46053),

Gene: Henry_43 Start: 35628, Stop: 35353, Start Num: 54

Candidate Starts for Henry_43:

(48, 35643), (Start: 54 @35628 has 12 MA's), (69, 35493), (73, 35469), (76, 35445), (81, 35400), (88, 35373),

Gene: HufflyPuff_43 Start: 35550, Stop: 35272, Start Num: 55

Candidate Starts for HufflyPuff_43:

(2, 35886), (3, 35883), (4, 35877), (5, 35868), (20, 35709), (25, 35679), (Start: 55 @35550 has 12 MA's), (67, 35430), (69, 35412), (73, 35388), (76, 35364), (81, 35319), (88, 35292),

Gene: HyRo_13 Start: 5432, Stop: 5707, Start Num: 53

Candidate Starts for HyRo_13:

(37, 5396), (Start: 53 @5432 has 33 MA's), (69, 5567), (73, 5591), (76, 5615), (81, 5660), (88, 5687),

Gene: ILeeKay_42 Start: 32194, Stop: 31832, Start Num: 41

Candidate Starts for ILeeKay_42:

(15, 32332), (23, 32299), (Start: 41 @32194 has 11 MA's), (80, 31951), (85, 31930), (86, 31924), (88, 31921),

Gene: IMpilo_77 Start: 46915, Stop: 47121, Start Num: 65

Candidate Starts for IMpilo_77:

(Start: 65 @46915 has 1 MA's), (68, 46963), (77, 47023), (83, 47062),

Gene: IkeLoa_7 Start: 3049, Stop: 3285, Start Num: 63

Candidate Starts for IkeLoa_7:

(1, 2605), (6, 2707), (7, 2710), (8, 2716), (9, 2725), (28, 2905), (42, 2968), (Start: 63 @3049 has 4 MA's), (67, 3124), (68, 3139), (73, 3166), (75, 3172), (78, 3217), (80, 3229), (87, 3259),

Gene: JoeyJr_83 Start: 50528, Stop: 50806, Start Num: 56

Candidate Starts for JoeyJr_83:

(Start: 56 @50528 has 25 MA's), (61, 50570), (71, 50666), (80, 50732), (85, 50753), (86, 50759), (88, 50762), (89, 50765), (90, 50786),

Gene: JulietS_7 Start: 2148, Stop: 2384, Start Num: 63

Candidate Starts for JulietS_7:

(49, 2091), (Start: 63 @2148 has 4 MA's), (67, 2223), (68, 2238), (73, 2265), (75, 2271), (78, 2316), (80, 2328), (87, 2358),

Gene: KBG_41 Start: 33134, Stop: 32772, Start Num: 41

Candidate Starts for KBG_41:

(23, 33239), (Start: 41 @33134 has 11 MA's), (80, 32891), (85, 32870), (86, 32864), (88, 32861),

Gene: Kingsley_84 Start: 51337, Stop: 51612, Start Num: 53

Candidate Starts for Kingsley_84:

(19, 51175), (21, 51184), (Start: 53 @51337 has 33 MA's), (69, 51472), (73, 51496), (76, 51520), (81, 51565), (88, 51592),

Gene: Kostya_42 Start: 35041, Stop: 34763, Start Num: 55

Candidate Starts for Kostya_42:

(2, 35377), (3, 35374), (4, 35368), (5, 35359), (20, 35200), (25, 35170), (Start: 55 @35041 has 12 MA's), (67, 34921), (69, 34903), (73, 34879), (76, 34855), (81, 34810), (88, 34783),

Gene: Ksquared_55 Start: 38040, Stop: 38279, Start Num: 63

Candidate Starts for Ksquared_55:

(11, 37779), (16, 37812), (22, 37836), (24, 37842), (52, 37983), (Start: 63 @38040 has 4 MA's), (67, 38115), (68, 38130), (73, 38157), (75, 38163), (78, 38208), (80, 38220),

Gene: Leperchaun_81 Start: 49762, Stop: 50040, Start Num: 56

Candidate Starts for Leperchaun_81:

(Start: 56 @49762 has 25 MA's), (61, 49804), (71, 49900), (80, 49966), (85, 49987), (86, 49993), (88, 49996), (89, 49999), (90, 50020),

Gene: Licorice_42 Start: 33025, Stop: 32663, Start Num: 41

Candidate Starts for Licorice_42:

(15, 33163), (23, 33130), (Start: 41 @33025 has 11 MA's), (80, 32782), (85, 32761), (86, 32755), (88, 32752),

Gene: Lilpickle_44 Start: 34884, Stop: 34609, Start Num: 53

Candidate Starts for Lilpickle_44:

(Start: 53 @34884 has 33 MA's), (67, 34767), (69, 34749), (73, 34725), (76, 34701), (81, 34656), (88, 34629),

Gene: LittleShirley_88 Start: 49954, Stop: 50238, Start Num: 50

Candidate Starts for LittleShirley_88:

(25, 49837), (29, 49867), (32, 49894), (42, 49930), (Start: 50 @49954 has 4 MA's), (66, 50059), (70, 50107), (72, 50125), (74, 50131), (79, 50188), (80, 50197),

Gene: LunarLander_42 Start: 32151, Stop: 31789, Start Num: 41

Candidate Starts for LunarLander_42:

(15, 32289), (23, 32256), (Start: 41 @32151 has 11 MA's), (80, 31908), (85, 31887), (86, 31881), (88, 31878),

Gene: Manda_44 Start: 36070, Stop: 35795, Start Num: 53

Candidate Starts for Manda_44:

(37, 36106), (Start: 53 @36070 has 33 MA's), (69, 35935), (73, 35911), (76, 35887), (81, 35842), (88, 35815),

Gene: Manda_42 Start: 35521, Stop: 35240, Start Num: 56

Candidate Starts for Manda_42:

(Start: 56 @35521 has 25 MA's), (61, 35479), (71, 35383), (80, 35317), (88, 35287),

Gene: MilanaBonita_76 Start: 47736, Stop: 48011, Start Num: 53

Candidate Starts for MilanaBonita_76:

(43, 47712), (Start: 53 @47736 has 33 MA's), (69, 47871), (73, 47895), (76, 47919), (81, 47964), (88, 47991),

Gene: MilleniumForce_83 Start: 50034, Stop: 50318, Start Num: 56

Candidate Starts for MilleniumForce_83:

(Start: 56 @50034 has 25 MA's), (61, 50076), (71, 50172), (80, 50238), (85, 50259), (86, 50265), (88, 50268),

Gene: Minnie_78 Start: 50814, Stop: 51092, Start Num: 56

Candidate Starts for Minnie_78:

(Start: 56 @50814 has 25 MA's), (61, 50856), (71, 50952), (80, 51018), (85, 51039), (86, 51045), (88, 51048), (89, 51051), (90, 51072),

Gene: Misfit_43 Start: 35615, Stop: 35337, Start Num: 55

Candidate Starts for Misfit_43:

(2, 35951), (3, 35948), (4, 35942), (5, 35933), (20, 35774), (25, 35744), (Start: 55 @35615 has 12 MA's), (67, 35495), (69, 35477), (73, 35453), (76, 35429), (81, 35384), (88, 35357),

Gene: Ms6_80 Start: 45220, Stop: 45495, Start Num: 53

Candidate Starts for Ms6_80:

(37, 45184), (Start: 53 @45220 has 33 MA's), (69, 45355), (73, 45379), (76, 45403), (81, 45448), (88, 45475),

Gene: Murica_43 Start: 35550, Stop: 35272, Start Num: 55

Candidate Starts for Murica_43:

(2, 35886), (3, 35883), (4, 35877), (5, 35868), (20, 35709), (25, 35679), (Start: 55 @35550 has 12 MA's), (67, 35430), (69, 35412), (73, 35388), (76, 35364), (81, 35319), (88, 35292),

Gene: Nekros_74 Start: 49519, Stop: 49244, Start Num: 53

Candidate Starts for Nekros_74:

(Start: 53 @49519 has 33 MA's), (69, 49384), (73, 49360), (76, 49336), (81, 49291), (88, 49264),

Gene: NelitzaMV_41 Start: 34995, Stop: 34720, Start Num: 54

Candidate Starts for NelitzaMV_41:

(48, 35010), (Start: 54 @34995 has 12 MA's), (69, 34860), (73, 34836), (76, 34812), (81, 34767), (88, 34740),

Gene: Nimbo_75 Start: 48626, Stop: 48904, Start Num: 56

Candidate Starts for Nimbo_75:

(Start: 56 @48626 has 25 MA's), (61, 48668), (71, 48764), (80, 48830), (85, 48851), (86, 48857), (88, 48860), (89, 48863), (90, 48884),

Gene: Nimrod_44 Start: 35808, Stop: 35530, Start Num: 55

Candidate Starts for Nimrod_44:

(2, 36144), (3, 36141), (4, 36135), (5, 36126), (20, 35967), (25, 35937), (Start: 55 @35808 has 12 MA's), (67, 35688), (69, 35670), (73, 35646), (76, 35622), (81, 35577), (88, 35550),

Gene: Nitzel_74 Start: 45944, Stop: 46222, Start Num: 53

Candidate Starts for Nitzel_74:

(Start: 53 @45944 has 33 MA's), (61, 45986), (71, 46082), (80, 46148), (85, 46169), (86, 46175), (88, 46178), (89, 46181), (90, 46202),

Gene: OldBen_80 Start: 50018, Stop: 50296, Start Num: 56

Candidate Starts for OldBen_80:

(Start: 56 @50018 has 25 MA's), (61, 50060), (71, 50156), (80, 50222), (85, 50243), (86, 50249), (88, 50252), (89, 50255), (90, 50276),

Gene: PHappiness_83 Start: 50847, Stop: 51125, Start Num: 56

Candidate Starts for PHappiness_83:

(Start: 56 @50847 has 25 MA's), (61, 50889), (71, 50985), (80, 51051), (85, 51072), (86, 51078), (88, 51081), (89, 51084), (90, 51105),

Gene: Pacc40_79 Start: 50262, Stop: 50540, Start Num: 53

Candidate Starts for Pacc40_79:

(Start: 53 @50262 has 33 MA's), (61, 50304), (71, 50400), (80, 50466), (85, 50487), (86, 50493), (88, 50496), (89, 50499), (90, 50520),

Gene: Pacc40_78 Start: 49990, Stop: 50265, Start Num: 53

Candidate Starts for Pacc40_78:

(43, 49966), (Start: 53 @49990 has 33 MA's), (69, 50125), (73, 50149), (76, 50173), (81, 50218), (88, 50245),

Gene: Palpatine_44 Start: 35580, Stop: 35302, Start Num: 55

Candidate Starts for Palpatine_44:

(2, 35916), (3, 35913), (4, 35907), (5, 35898), (20, 35739), (25, 35709), (Start: 55 @35580 has 12 MA's), (67, 35460), (69, 35442), (73, 35418), (76, 35394), (81, 35349), (88, 35322),

Gene: Paperbeatsrock_43 Start: 35924, Stop: 35649, Start Num: 54

Candidate Starts for Paperbeatsrock_43:

(48, 35939), (Start: 54 @35924 has 12 MA's), (69, 35789), (73, 35765), (76, 35741), (81, 35696), (88, 35669),

Gene: Petra64142_46 Start: 36044, Stop: 35766, Start Num: 55

Candidate Starts for Petra64142_46:

(2, 36380), (3, 36377), (4, 36371), (5, 36362), (20, 36203), (25, 36173), (Start: 55 @36044 has 12 MA's), (67, 35924), (69, 35906), (73, 35882), (76, 35858), (81, 35813), (88, 35786),

Gene: Petruchio_83 Start: 47510, Stop: 47223, Start Num: 56

Candidate Starts for Petruchio_83:

(46, 47534), (Start: 56 @47510 has 25 MA's), (61, 47468), (71, 47372), (80, 47306), (85, 47285), (86, 47279), (89, 47273),

Gene: Petruchio_61 Start: 40438, Stop: 40163, Start Num: 54

Candidate Starts for Petruchio_61:

(13, 40639), (34, 40495), (35, 40492), (Start: 54 @40438 has 12 MA's), (67, 40321), (69, 40303), (73, 40279), (76, 40255), (81, 40210), (88, 40183),

Gene: Phalconet_77 Start: 47759, Stop: 48034, Start Num: 53

Candidate Starts for Phalconet_77:

(Start: 53 @47759 has 33 MA's), (69, 47894), (73, 47918), (76, 47942), (81, 47987), (88, 48014),

Gene: Phanphagia_79 Start: 49133, Stop: 49408, Start Num: 53

Candidate Starts for Phanphagia_79:

(19, 48971), (21, 48980), (Start: 53 @49133 has 33 MA's), (69, 49268), (73, 49292), (76, 49316), (81, 49361), (88, 49388),

Gene: Pharsalus_42 Start: 35724, Stop: 35449, Start Num: 54

Candidate Starts for Pharsalus_42:

(48, 35739), (Start: 54 @35724 has 12 MA's), (69, 35589), (73, 35565), (76, 35541), (81, 35496), (88, 35469),

Gene: PhatBacter_44 Start: 35594, Stop: 35316, Start Num: 55

Candidate Starts for PhatBacter_44:

(2, 35930), (3, 35927), (4, 35921), (5, 35912), (20, 35753), (25, 35723), (Start: 55 @35594 has 12 MA's), (67, 35474), (69, 35456), (73, 35432), (76, 35408), (81, 35363), (88, 35336),

Gene: Phaux_43 Start: 35592, Stop: 35314, Start Num: 55

Candidate Starts for Phaux_43:

(2, 35928), (3, 35925), (4, 35919), (5, 35910), (20, 35751), (25, 35721), (Start: 55 @35592 has 12 MA's), (67, 35472), (69, 35454), (73, 35430), (76, 35406), (81, 35361), (88, 35334),

Gene: Phlippers_38 Start: 32612, Stop: 32250, Start Num: 41

Candidate Starts for Phlippers_38:

(15, 32750), (23, 32717), (Start: 41 @32612 has 11 MA's), (80, 32369), (85, 32348), (86, 32342), (88, 32339),

Gene: Poise_8 Start: 2539, Stop: 2790, Start Num: 57

Candidate Starts for Poise_8:

(Start: 57 @2539 has 3 MA's), (59, 2554), (81, 2743), (88, 2770),

Gene: Policronamos_44 Start: 35592, Stop: 35314, Start Num: 55

Candidate Starts for Policronamos_44:

(2, 35928), (3, 35925), (4, 35919), (5, 35910), (20, 35751), (25, 35721), (Start: 55 @35592 has 12 MA's), (67, 35472), (69, 35454), (73, 35430), (76, 35406), (81, 35361), (88, 35334),

Gene: Pollywog_81 Start: 49950, Stop: 50234, Start Num: 56

Candidate Starts for Pollywog_81:

(Start: 56 @49950 has 25 MA's), (61, 49992), (71, 50088), (80, 50154), (85, 50175), (86, 50181), (88, 50184),

Gene: Porky_43 Start: 35192, Stop: 34917, Start Num: 53

Candidate Starts for Porky_43:

(26, 35294), (27, 35288), (31, 35258), (Start: 53 @35192 has 33 MA's), (67, 35075), (69, 35057), (73, 35033), (76, 35009), (81, 34964), (88, 34937),

Gene: QBert_7 Start: 3151, Stop: 3387, Start Num: 63

Candidate Starts for QBert_7:

(49, 3094), (Start: 63 @3151 has 4 MA's), (67, 3226), (68, 3241), (73, 3268), (75, 3274), (78, 3319), (80, 3331), (87, 3361),

Gene: Raela_8 Start: 2919, Stop: 3194, Start Num: 53

Candidate Starts for Raela_8:

(Start: 53 @2919 has 33 MA's), (69, 3054), (73, 3078), (76, 3102), (81, 3147), (88, 3174),

Gene: RitaG_83 Start: 50649, Stop: 50927, Start Num: 56

Candidate Starts for RitaG_83:

(Start: 56 @50649 has 25 MA's), (61, 50691), (71, 50787), (80, 50853), (85, 50874), (86, 50880), (88, 50883), (89, 50886), (90, 50907),

Gene: RoMag_6 Start: 3000, Stop: 3236, Start Num: 63

Candidate Starts for RoMag_6:

(49, 2943), (Start: 63 @3000 has 4 MA's), (67, 3075), (68, 3090), (73, 3117), (75, 3123), (78, 3168), (80, 3180), (87, 3210),

Gene: Sandalphon_76 Start: 48799, Stop: 49077, Start Num: 56

Candidate Starts for Sandalphon_76:

(Start: 56 @48799 has 25 MA's), (61, 48841), (71, 48937), (80, 49003), (85, 49024), (86, 49030), (88, 49033), (89, 49036), (90, 49057),

Gene: ScottMcG_17 Start: 5737, Stop: 6012, Start Num: 53

Candidate Starts for ScottMcG_17:

(37, 5701), (Start: 53 @5737 has 33 MA's), (69, 5872), (73, 5896), (76, 5920), (81, 5965), (88, 5992),

Gene: Shaboozey_71 Start: 46258, Stop: 45983, Start Num: 53

Candidate Starts for Shaboozey_71:

(26, 46306), (27, 46300), (Start: 53 @46258 has 33 MA's), (69, 46123), (73, 46099), (76, 46075), (81, 46030), (88, 46003),

Gene: Shauna1_80 Start: 49383, Stop: 49658, Start Num: 53

Candidate Starts for Shauna1_80:

(19, 49221), (21, 49230), (Start: 53 @49383 has 33 MA's), (69, 49518), (73, 49542), (76, 49566), (81, 49611), (88, 49638),

Gene: Shifa_12 Start: 4863, Stop: 5138, Start Num: 53

Candidate Starts for Shifa_12:

(37, 4827), (Start: 53 @4863 has 33 MA's), (69, 4998), (73, 5022), (76, 5046), (81, 5091), (88, 5118),

Gene: Smairt_41 Start: 32245, Stop: 31883, Start Num: 41

Candidate Starts for Smairt_41:

(15, 32383), (23, 32350), (Start: 41 @32245 has 11 MA's), (80, 32002), (85, 31981), (86, 31975), (88, 31972),

Gene: SophKB_41 Start: 34943, Stop: 34668, Start Num: 54

Candidate Starts for SophKB_41:

(48, 34958), (Start: 54 @34943 has 12 MA's), (69, 34808), (73, 34784), (76, 34760), (81, 34715), (88, 34688),

Gene: StAnnes_84 Start: 50390, Stop: 50668, Start Num: 56

Candidate Starts for StAnnes_84:

(Start: 56 @50390 has 25 MA's), (61, 50432), (71, 50528), (80, 50594), (85, 50615), (86, 50621), (88, 50624), (89, 50627), (90, 50648),

Gene: Starcevich_82 Start: 50235, Stop: 50519, Start Num: 50

Candidate Starts for Starcevich_82:

(25, 50118), (29, 50148), (32, 50175), (42, 50211), (Start: 50 @50235 has 4 MA's), (66, 50340), (70, 50388), (72, 50406), (74, 50412), (79, 50469), (80, 50478),

Gene: Stubby_16 Start: 5996, Stop: 6271, Start Num: 53

Candidate Starts for Stubby_16:

(37, 5960), (Start: 53 @5996 has 33 MA's), (69, 6131), (73, 6155), (76, 6179), (81, 6224), (88, 6251),

Gene: Tarkin_43 Start: 35933, Stop: 35658, Start Num: 54

Candidate Starts for Tarkin_43:

(48, 35948), (Start: 54 @35933 has 12 MA's), (69, 35798), (73, 35774), (76, 35750), (81, 35705), (88, 35678),

Gene: Teaspoon_46 Start: 35899, Stop: 35624, Start Num: 53

Candidate Starts for Teaspoon_46:

(26, 36001), (27, 35995), (31, 35965), (Start: 53 @35899 has 33 MA's), (67, 35782), (69, 35764), (73, 35740), (76, 35716), (81, 35671), (88, 35644),

Gene: Terminus_43 Start: 35615, Stop: 35337, Start Num: 55

Candidate Starts for Terminus_43:

(2, 35951), (3, 35948), (4, 35942), (5, 35933), (20, 35774), (25, 35744), (Start: 55 @35615 has 12 MA's), (67, 35495), (69, 35477), (73, 35453), (76, 35429), (81, 35384), (88, 35357),

Gene: Tesla_8 Start: 2530, Stop: 2781, Start Num: 57

Candidate Starts for Tesla_8:

(Start: 57 @2530 has 3 MA's), (59, 2545), (60, 2554), (81, 2734), (88, 2761),

Gene: Topgun_39 Start: 31551, Stop: 31189, Start Num: 41

Candidate Starts for Topgun_39:

(15, 31689), (23, 31656), (Start: 41 @31551 has 11 MA's), (80, 31308), (85, 31287), (86, 31281), (88, 31278),

Gene: Toron_85 Start: 51169, Stop: 51453, Start Num: 44

Candidate Starts for Toron_85:

(39, 51154), (44, 51169), (60, 51232), (62, 51241), (79, 51409), (84, 51430), (85, 51439),

Gene: Totinger_84 Start: 49031, Stop: 49315, Start Num: 50

Candidate Starts for Totinger_84:

(25, 48914), (29, 48944), (32, 48971), (42, 49007), (Start: 50 @49031 has 4 MA's), (66, 49136), (70, 49184), (72, 49202), (74, 49208), (79, 49265), (80, 49274),

Gene: Ukulele_41 Start: 34868, Stop: 34593, Start Num: 53

Candidate Starts for Ukulele_41:

(36, 34910), (38, 34907), (Start: 53 @34868 has 33 MA's), (69, 34733), (73, 34709), (76, 34685), (81, 34640), (88, 34613),

Gene: Vivum_87 Start: 52067, Stop: 52345, Start Num: 56

Candidate Starts for Vivum_87:

(17, 51884), (30, 51977), (33, 51992), (Start: 56 @52067 has 25 MA's), (61, 52109), (71, 52205), (80, 52271), (85, 52292), (86, 52298), (88, 52301), (89, 52304), (90, 52325),

Gene: Vivum_84 Start: 50921, Stop: 51205, Start Num: 50

Candidate Starts for Vivum_84:

(25, 50804), (29, 50834), (32, 50861), (42, 50897), (Start: 50 @50921 has 4 MA's), (66, 51026), (70, 51074), (72, 51092), (74, 51098), (79, 51155), (80, 51164),

Gene: Whouxphf_77 Start: 48494, Stop: 48697, Start Num: 65

Candidate Starts for Whouxphf_77:

(10, 48149), (12, 48185), (14, 48203), (40, 48350), (58, 48422), (62, 48446), (64, 48449), (Start: 65 @48494 has 1 MA's), (68, 48542), (77, 48602), (82, 48638),

Gene: Wilkins_39 Start: 31484, Stop: 31122, Start Num: 41

Candidate Starts for Wilkins_39:

(15, 31622), (23, 31589), (Start: 41 @31484 has 11 MA's), (80, 31241), (85, 31220), (86, 31214), (88, 31211),

Gene: XFactor_76 Start: 47957, Stop: 48232, Start Num: 53

Candidate Starts for XFactor_76:

(37, 47921), (Start: 53 @47957 has 33 MA's), (69, 48092), (73, 48116), (76, 48140), (81, 48185), (88, 48212),

Gene: Zerg_83 Start: 49449, Stop: 49727, Start Num: 56

Candidate Starts for Zerg_83:

(Start: 56 @49449 has 25 MA's), (61, 49491), (71, 49587), (80, 49653), (85, 49674), (86, 49680), (88, 49683), (89, 49686), (90, 49707),

Gene: xkcd_45 Start: 35735, Stop: 35457, Start Num: 55

Candidate Starts for xkcd_45:

(2, 36071), (3, 36068), (4, 36062), (5, 36053), (20, 35894), (25, 35864), (Start: 55 @35735 has 12 MA's), (67, 35615), (69, 35597), (73, 35573), (76, 35549), (81, 35504), (88, 35477),