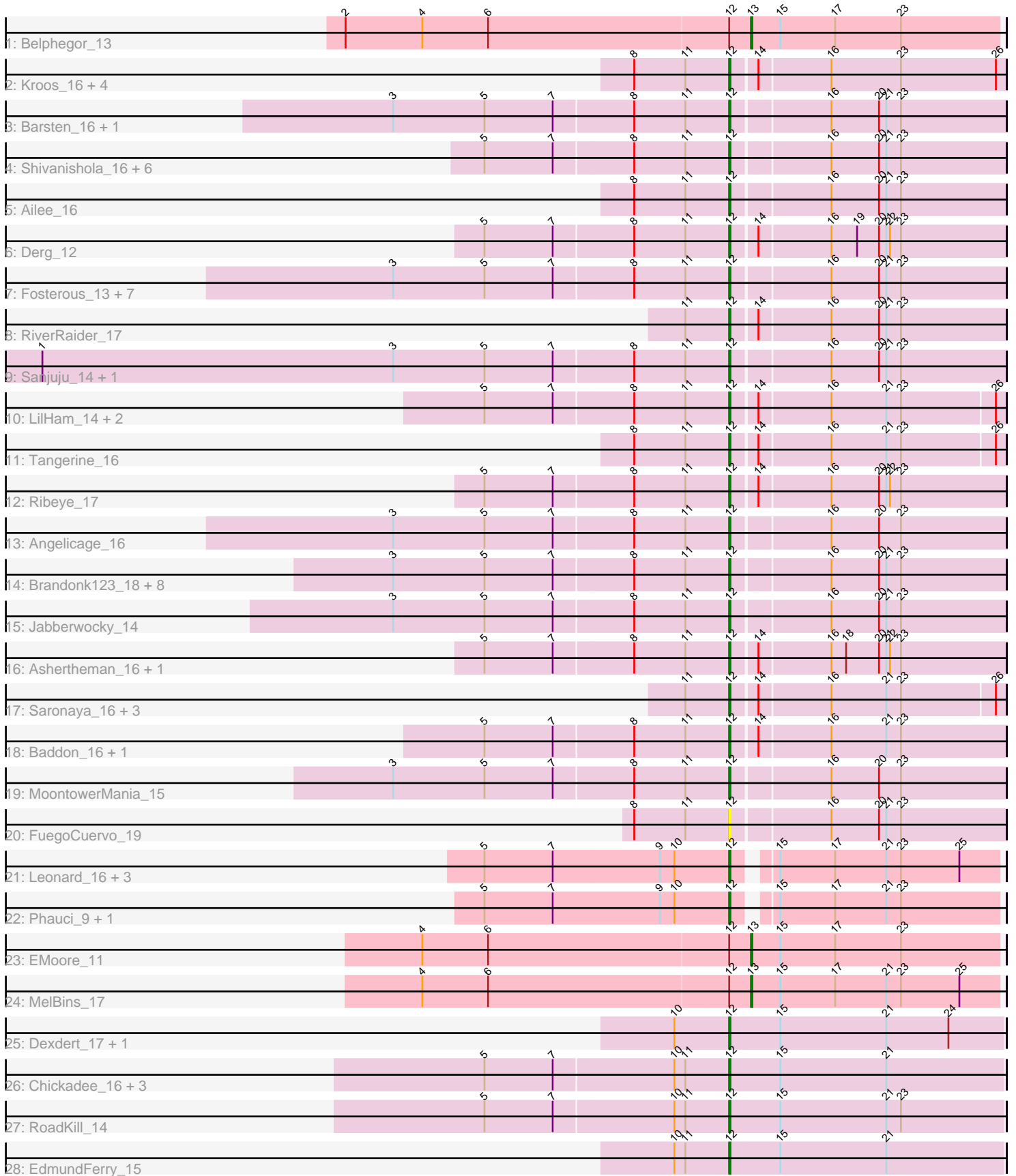


Pham 221410



Note: Tracks are now grouped by subcluster and scaled. Switching in subcluster is indicated by changes in track color. Track scale is now set by default to display the region 30 bp upstream of start 1 to 30 bp downstream of the last possible start. If this default region is judged to be packed too tightly with annotated starts, the track will be further scaled to only show that region of the ORF with annotated starts. This action will be indicated by adding "Zoomed" to the title. For starts, yellow indicates the location of called starts comprised solely of Glimmer/GeneMark auto-annotations, green indicates the location of called starts with at least 1 manual gene annotation.

Pham 221410 Report

This analysis was run 03/28/25 on database version 593.

Pham number 221410 has 70 members, 9 are drafts.

Phages represented in each track:

- Track 1 : Belphegor_13
- Track 2 : Kroos_16, Flatwoods_17, Bizzy_17, StorminNorm_16, Tycho_16
- Track 3 : Barsten_16, ChadMasterC_16
- Track 4 : Shivanishola_16, Sitar_17, Stultus_16, Kewpiedoll_17, Lennon_17, Bibwit_16, Geodirt_15
- Track 5 : Ailee_16
- Track 6 : Derg_12
- Track 7 : Fosterous_13, Rofo_15, Keitabear_17, Thing3_17, Affeca_16, Vivi2_15, Kamashten_17, Sedona_17
- Track 8 : RiverRaider_17
- Track 9 : Sanjuju_14, Fitzgerald_14
- Track 10 : LilHam_14, YorkOnyx_16, SchottB_15
- Track 11 : Tangerine_16
- Track 12 : Ribeye_17
- Track 13 : Angelicage_16
- Track 14 : Brandonk123_18, Paries_16, Nordenberg_10, Tangent_13, McKinley_17, Galadriel_17, Charming_13, Love_17, BobBob_13
- Track 15 : Jabberwocky_14
- Track 16 : Ashertheman_16, JKSyngboy_15
- Track 17 : Saronaya_16, Gaea_16, Baumdotcom_16, Gustavo_16
- Track 18 : Baddon_16, Kwobi_16
- Track 19 : MoontowerMania_15
- Track 20 : FuegoCuervo_19
- Track 21 : Leonard_16, Inspectinfecti_17, Ali17_14, Phinally_16
- Track 22 : Phauci_9, Hans_18
- Track 23 : EMoore_11
- Track 24 : MelBins_17
- Track 25 : Dxdert_17, Kwekel_16
- Track 26 : Chickadee_16, GTE6_17, Tiamoceli_17, Twonlo_14
- Track 27 : RoadKill_14
- Track 28 : EdmundFerry_15

Summary of Final Annotations (See graph section above for start numbers):

The start number called the most often in the published annotations is 12, it was called in 58 of the 61 non-draft genes in the pham.

Genes that call this "Most Annotated" start:

- Affeca_16, Ailee_16, Ali17_14, Angelicage_16, Ashertheman_16, Baddon_16, Barsten_16, Baumdotcom_16, Bibwit_16, Bizzy_17, BobBob_13, Brandonk123_18, ChadMasterC_16, Charming_13, Chickadee_16, Derg_12, Dxdert_17, EdmundFerry_15, Fitzgerald_14, Flatwoods_17, Fosterous_13, FuegoCuervo_19, GTE6_17, Gaea_16, Galadriel_17, Geodirt_15, Gustavo_16, Hans_18, Inspectinfecti_17, JKSyngboy_15, Jabberwocky_14, Kamashten_17, Keitabear_17, Kewpiedoll_17, Kroos_16, Kwekel_16, Kwobi_16, Lennon_17, Leonard_16, LilHam_14, Love_17, McKinley_17, MoontowerMania_15, Nordenberg_10, Paries_16, Phauci_9, Phinally_16, Ribeye_17, RiverRaider_17, RoadKill_14, Rofo_15, Sanjuju_14, Saronaya_16, SchottB_15, Sedona_17, Shivanishola_16, Sitar_17, StorminNorm_16, Stultus_16, Tangent_13, Tangerine_16, Thing3_17, Tiamoceli_17, Twonlo_14, Tycho_16, Vivi2_15, YorkOnyx_16,

Genes that have the "Most Annotated" start but do not call it:

- Belphegor_13, EMoore_11, MelBins_17,

Genes that do not have the "Most Annotated" start:

-

Summary by start number:

Start 12:

- Found in 70 of 70 (100.0%) of genes in pham
- Manual Annotations of this start: 58 of 61
- Called 95.7% of time when present
- Phage (with cluster) where this start called: Affeca_16 (DE1), Ailee_16 (DE1), Ali17_14 (DE2), Angelicage_16 (DE1), Ashertheman_16 (DE1), Baddon_16 (DE1), Barsten_16 (DE1), Baumdotcom_16 (DE1), Bibwit_16 (DE1), Bizzy_17 (DE1), BobBob_13 (DE1), Brandonk123_18 (DE1), ChadMasterC_16 (DE1), Charming_13 (DE1), Chickadee_16 (DE3), Derg_12 (DE1), Dxdert_17 (DE3), EdmundFerry_15 (DE3), Fitzgerald_14 (DE1), Flatwoods_17 (DE1), Fosterous_13 (DE1), FuegoCuervo_19 (DE1), GTE6_17 (DE3), Gaea_16 (DE1), Galadriel_17 (DE1), Geodirt_15 (DE1), Gustavo_16 (DE1), Hans_18 (DE2), Inspectinfecti_17 (DE2), JKSyngboy_15 (DE1), Jabberwocky_14 (DE1), Kamashten_17 (DE1), Keitabear_17 (DE1), Kewpiedoll_17 (DE1), Kroos_16 (DE1), Kwekel_16 (DE3), Kwobi_16 (DE1), Lennon_17 (DE1), Leonard_16 (DE2), LilHam_14 (DE1), Love_17 (DE1), McKinley_17 (DE1), MoontowerMania_15 (DE1), Nordenberg_10 (DE1), Paries_16 (DE1), Phauci_9 (DE2), Phinally_16 (DE2), Ribeye_17 (DE1), RiverRaider_17 (DE1), RoadKill_14 (DE3), Rofo_15 (DE1), Sanjuju_14 (DE1), Saronaya_16 (DE1), SchottB_15 (DE1), Sedona_17 (DE1), Shivanishola_16 (DE1), Sitar_17 (DE1), StorminNorm_16 (DE1), Stultus_16 (DE1), Tangent_13 (DE1), Tangerine_16 (DE1), Thing3_17 (DE1), Tiamoceli_17 (DE3), Twonlo_14 (DE3), Tycho_16 (DE1), Vivi2_15 (DE1), YorkOnyx_16 (DE1),

Start 13:

- Found in 3 of 70 (4.3%) of genes in pham
- Manual Annotations of this start: 3 of 61
- Called 100.0% of time when present

- Phage (with cluster) where this start called: Belphegor_13 (DE), EMoore_11 (DE2), MelBins_17 (DE2),

Summary by clusters:

There are 4 clusters represented in this pham: DE1, DE2, DE3, DE,

Info for manual annotations of cluster DE:

- Start number 13 was manually annotated 1 time for cluster DE.

Info for manual annotations of cluster DE1:

- Start number 12 was manually annotated 45 times for cluster DE1.

Info for manual annotations of cluster DE2:

- Start number 12 was manually annotated 6 times for cluster DE2.
- Start number 13 was manually annotated 2 times for cluster DE2.

Info for manual annotations of cluster DE3:

- Start number 12 was manually annotated 7 times for cluster DE3.

Gene Information:

Gene: Affeca_16 Start: 12078, Stop: 12296, Start Num: 12

Candidate Starts for Affeca_16:

(3, 11808), (5, 11883), (7, 11937), (8, 12000), (11, 12042), (Start: 12 @12078 has 58 MA's), (16, 12153), (20, 12192), (21, 12198), (23, 12210),

Gene: Ailee_16 Start: 11968, Stop: 12186, Start Num: 12

Candidate Starts for Ailee_16:

(8, 11890), (11, 11932), (Start: 12 @11968 has 58 MA's), (16, 12043), (20, 12082), (21, 12088), (23, 12100),

Gene: Ali17_14 Start: 10793, Stop: 10996, Start Num: 12

Candidate Starts for Ali17_14:

(5, 10595), (7, 10649), (9, 10736), (10, 10748), (Start: 12 @10793 has 58 MA's), (15, 10817), (17, 10862), (21, 10904), (23, 10916), (25, 10964),

Gene: Angelicage_16 Start: 12501, Stop: 12719, Start Num: 12

Candidate Starts for Angelicage_16:

(3, 12231), (5, 12306), (7, 12360), (8, 12423), (11, 12465), (Start: 12 @12501 has 58 MA's), (16, 12576), (20, 12615), (23, 12633),

Gene: Ashertheman_16 Start: 10750, Stop: 10968, Start Num: 12

Candidate Starts for Ashertheman_16:

(5, 10555), (7, 10609), (8, 10672), (11, 10714), (Start: 12 @10750 has 58 MA's), (14, 10768), (16, 10825), (18, 10837), (20, 10864), (21, 10870), (22, 10873), (23, 10882),

Gene: Baddon_16 Start: 11337, Stop: 11555, Start Num: 12

Candidate Starts for Baddon_16:

(5, 11142), (7, 11196), (8, 11259), (11, 11301), (Start: 12 @11337 has 58 MA's), (14, 11355), (16, 11412), (21, 11457), (23, 11469),

Gene: Barsten_16 Start: 11562, Stop: 11780, Start Num: 12

Candidate Starts for Barsten_16:

(3, 11292), (5, 11367), (7, 11421), (8, 11484), (11, 11526), (Start: 12 @11562 has 58 MA's), (16, 11637), (20, 11676), (21, 11682), (23, 11694),

Gene: Baumdotcom_16 Start: 10671, Stop: 10886, Start Num: 12

Candidate Starts for Baumdotcom_16:

(11, 10635), (Start: 12 @10671 has 58 MA's), (14, 10689), (16, 10746), (21, 10791), (23, 10803), (26, 10878),

Gene: Belphegor_13 Start: 10042, Stop: 10245, Start Num: 13

Candidate Starts for Belphegor_13:

(2, 9712), (4, 9775), (6, 9829), (Start: 12 @10024 has 58 MA's), (Start: 13 @10042 has 3 MA's), (15, 10066), (17, 10111), (23, 10165),

Gene: Bibwit_16 Start: 11809, Stop: 12027, Start Num: 12

Candidate Starts for Bibwit_16:

(5, 11614), (7, 11668), (8, 11731), (11, 11773), (Start: 12 @11809 has 58 MA's), (16, 11884), (20, 11923), (21, 11929), (23, 11941),

Gene: Bizzy_17 Start: 10947, Stop: 11165, Start Num: 12

Candidate Starts for Bizzy_17:

(8, 10869), (11, 10911), (Start: 12 @10947 has 58 MA's), (14, 10965), (16, 11022), (23, 11079), (26, 11157),

Gene: BobBob_13 Start: 10392, Stop: 10610, Start Num: 12

Candidate Starts for BobBob_13:

(3, 10122), (5, 10197), (7, 10251), (8, 10314), (11, 10356), (Start: 12 @10392 has 58 MA's), (16, 10467), (20, 10506), (21, 10512), (23, 10524),

Gene: Brandonk123_18 Start: 11539, Stop: 11757, Start Num: 12

Candidate Starts for Brandonk123_18:

(3, 11269), (5, 11344), (7, 11398), (8, 11461), (11, 11503), (Start: 12 @11539 has 58 MA's), (16, 11614), (20, 11653), (21, 11659), (23, 11671),

Gene: ChadMasterC_16 Start: 11192, Stop: 11410, Start Num: 12

Candidate Starts for ChadMasterC_16:

(3, 10922), (5, 10997), (7, 11051), (8, 11114), (11, 11156), (Start: 12 @11192 has 58 MA's), (16, 11267), (20, 11306), (21, 11312), (23, 11324),

Gene: Charming_13 Start: 10394, Stop: 10612, Start Num: 12

Candidate Starts for Charming_13:

(3, 10124), (5, 10199), (7, 10253), (8, 10316), (11, 10358), (Start: 12 @10394 has 58 MA's), (16, 10469), (20, 10508), (21, 10514), (23, 10526),

Gene: Chickadee_16 Start: 10244, Stop: 10465, Start Num: 12

Candidate Starts for Chickadee_16:

(5, 10049), (7, 10103), (10, 10199), (11, 10208), (Start: 12 @10244 has 58 MA's), (15, 10283), (21, 10370),

Gene: Derg_12 Start: 9963, Stop: 10181, Start Num: 12

Candidate Starts for Derg_12:

(5, 9768), (7, 9822), (8, 9885), (11, 9927), (Start: 12 @9963 has 58 MA's), (14, 9981), (16, 10038), (19, 10059), (20, 10077), (21, 10083), (22, 10086), (23, 10095),

Gene: Dextert_17 Start: 10675, Stop: 10896, Start Num: 12

Candidate Starts for Dextert_17:

(10, 10630), (Start: 12 @10675 has 58 MA's), (15, 10714), (21, 10801), (24, 10852),

Gene: EMoore_11 Start: 9124, Stop: 9327, Start Num: 13

Candidate Starts for EMoore_11:

(4, 8857), (6, 8911), (Start: 12 @9106 has 58 MA's), (Start: 13 @9124 has 3 MA's), (15, 9148), (17, 9193), (23, 9247),

Gene: EdmundFerry_15 Start: 10262, Stop: 10483, Start Num: 12

Candidate Starts for EdmundFerry_15:

(10, 10217), (11, 10226), (Start: 12 @10262 has 58 MA's), (15, 10301), (21, 10388),

Gene: Fitzgerald_14 Start: 11299, Stop: 11517, Start Num: 12

Candidate Starts for Fitzgerald_14:

(1, 10741), (3, 11029), (5, 11104), (7, 11158), (8, 11221), (11, 11263), (Start: 12 @11299 has 58 MA's), (16, 11374), (20, 11413), (21, 11419), (23, 11431),

Gene: Flatwoods_17 Start: 10951, Stop: 11169, Start Num: 12

Candidate Starts for Flatwoods_17:

(8, 10873), (11, 10915), (Start: 12 @10951 has 58 MA's), (14, 10969), (16, 11026), (23, 11083), (26, 11161),

Gene: Fosterous_13 Start: 11322, Stop: 11540, Start Num: 12

Candidate Starts for Fosterous_13:

(3, 11052), (5, 11127), (7, 11181), (8, 11244), (11, 11286), (Start: 12 @11322 has 58 MA's), (16, 11397), (20, 11436), (21, 11442), (23, 11454),

Gene: FuegoCuervo_19 Start: 11024, Stop: 11242, Start Num: 12

Candidate Starts for FuegoCuervo_19:

(8, 10946), (11, 10988), (Start: 12 @11024 has 58 MA's), (16, 11099), (20, 11138), (21, 11144), (23, 11156),

Gene: GTE6_17 Start: 10760, Stop: 10981, Start Num: 12

Candidate Starts for GTE6_17:

(5, 10565), (7, 10619), (10, 10715), (11, 10724), (Start: 12 @10760 has 58 MA's), (15, 10799), (21, 10886),

Gene: Gaea_16 Start: 10651, Stop: 10866, Start Num: 12

Candidate Starts for Gaea_16:

(11, 10615), (Start: 12 @10651 has 58 MA's), (14, 10669), (16, 10726), (21, 10771), (23, 10783), (26, 10858),

Gene: Galadriel_17 Start: 11160, Stop: 11378, Start Num: 12

Candidate Starts for Galadriel_17:

(3, 10890), (5, 10965), (7, 11019), (8, 11082), (11, 11124), (Start: 12 @11160 has 58 MA's), (16, 11235), (20, 11274), (21, 11280), (23, 11292),

Gene: Geodirt_15 Start: 11049, Stop: 11267, Start Num: 12

Candidate Starts for Geodirt_15:

(5, 10854), (7, 10908), (8, 10971), (11, 11013), (Start: 12 @11049 has 58 MA's), (16, 11124), (20, 11163), (21, 11169), (23, 11181),

Gene: Gustavo_16 Start: 10762, Stop: 10977, Start Num: 12

Candidate Starts for Gustavo_16:

(11, 10726), (Start: 12 @10762 has 58 MA's), (14, 10780), (16, 10837), (21, 10882), (23, 10894), (26, 10969),

Gene: Hans_18 Start: 11337, Stop: 11540, Start Num: 12

Candidate Starts for Hans_18:

(5, 11139), (7, 11193), (9, 11280), (10, 11292), (Start: 12 @11337 has 58 MA's), (15, 11361), (17, 11406), (21, 11448), (23, 11460),

Gene: Inspectinfecti_17 Start: 11796, Stop: 11999, Start Num: 12

Candidate Starts for Inspectinfecti_17:

(5, 11598), (7, 11652), (9, 11739), (10, 11751), (Start: 12 @11796 has 58 MA's), (15, 11820), (17, 11865), (21, 11907), (23, 11919), (25, 11967),

Gene: JKSyngboy_15 Start: 11150, Stop: 11368, Start Num: 12

Candidate Starts for JKSyngboy_15:

(5, 10955), (7, 11009), (8, 11072), (11, 11114), (Start: 12 @11150 has 58 MA's), (14, 11168), (16, 11225), (18, 11237), (20, 11264), (21, 11270), (22, 11273), (23, 11282),

Gene: Jabberwocky_14 Start: 11712, Stop: 11930, Start Num: 12

Candidate Starts for Jabberwocky_14:

(3, 11442), (5, 11517), (7, 11571), (8, 11634), (11, 11676), (Start: 12 @11712 has 58 MA's), (16, 11787), (20, 11826), (21, 11832), (23, 11844),

Gene: Kamashten_17 Start: 12392, Stop: 12610, Start Num: 12

Candidate Starts for Kamashten_17:

(3, 12122), (5, 12197), (7, 12251), (8, 12314), (11, 12356), (Start: 12 @12392 has 58 MA's), (16, 12467), (20, 12506), (21, 12512), (23, 12524),

Gene: Keitabear_17 Start: 13525, Stop: 13743, Start Num: 12

Candidate Starts for Keitabear_17:

(3, 13255), (5, 13330), (7, 13384), (8, 13447), (11, 13489), (Start: 12 @13525 has 58 MA's), (16, 13600), (20, 13639), (21, 13645), (23, 13657),

Gene: Kewpiedoll_17 Start: 11773, Stop: 11991, Start Num: 12

Candidate Starts for Kewpiedoll_17:

(5, 11578), (7, 11632), (8, 11695), (11, 11737), (Start: 12 @11773 has 58 MA's), (16, 11848), (20, 11887), (21, 11893), (23, 11905),

Gene: Kroos_16 Start: 10788, Stop: 11006, Start Num: 12

Candidate Starts for Kroos_16:

(8, 10710), (11, 10752), (Start: 12 @10788 has 58 MA's), (14, 10806), (16, 10863), (23, 10920), (26, 10998),

Gene: Kwekel_16 Start: 10216, Stop: 10437, Start Num: 12

Candidate Starts for Kwekel_16:

(10, 10171), (Start: 12 @10216 has 58 MA's), (15, 10255), (21, 10342), (24, 10393),

Gene: Kwobi_16 Start: 10753, Stop: 10971, Start Num: 12

Candidate Starts for Kwobi_16:

(5, 10558), (7, 10612), (8, 10675), (11, 10717), (Start: 12 @10753 has 58 MA's), (14, 10771), (16, 10828), (21, 10873), (23, 10885),

Gene: Lennon_17 Start: 12632, Stop: 12850, Start Num: 12

Candidate Starts for Lennon_17:

(5, 12437), (7, 12491), (8, 12554), (11, 12596), (Start: 12 @12632 has 58 MA's), (16, 12707), (20, 12746), (21, 12752), (23, 12764),

Gene: Leonard_16 Start: 11391, Stop: 11594, Start Num: 12

Candidate Starts for Leonard_16:

(5, 11193), (7, 11247), (9, 11334), (10, 11346), (Start: 12 @11391 has 58 MA's), (15, 11415), (17, 11460), (21, 11502), (23, 11514), (25, 11562),

Gene: LilHam_14 Start: 10069, Stop: 10284, Start Num: 12

Candidate Starts for LilHam_14:

(5, 9874), (7, 9928), (8, 9991), (11, 10033), (Start: 12 @10069 has 58 MA's), (14, 10087), (16, 10144), (21, 10189), (23, 10201), (26, 10276),

Gene: Love_17 Start: 11471, Stop: 11689, Start Num: 12

Candidate Starts for Love_17:

(3, 11201), (5, 11276), (7, 11330), (8, 11393), (11, 11435), (Start: 12 @11471 has 58 MA's), (16, 11546), (20, 11585), (21, 11591), (23, 11603),

Gene: McKinley_17 Start: 11930, Stop: 12148, Start Num: 12

Candidate Starts for McKinley_17:

(3, 11660), (5, 11735), (7, 11789), (8, 11852), (11, 11894), (Start: 12 @11930 has 58 MA's), (16, 12005), (20, 12044), (21, 12050), (23, 12062),

Gene: MelBins_17 Start: 11587, Stop: 11790, Start Num: 13

Candidate Starts for MelBins_17:

(4, 11320), (6, 11374), (Start: 12 @11569 has 58 MA's), (Start: 13 @11587 has 3 MA's), (15, 11611), (17, 11656), (21, 11698), (23, 11710), (25, 11758),

Gene: MoontowerMania_15 Start: 10935, Stop: 11153, Start Num: 12

Candidate Starts for MoontowerMania_15:

(3, 10665), (5, 10740), (7, 10794), (8, 10857), (11, 10899), (Start: 12 @10935 has 58 MA's), (16, 11010), (20, 11049), (23, 11067),

Gene: Nordenberg_10 Start: 9821, Stop: 10039, Start Num: 12

Candidate Starts for Nordenberg_10:

(3, 9551), (5, 9626), (7, 9680), (8, 9743), (11, 9785), (Start: 12 @9821 has 58 MA's), (16, 9896), (20, 9935), (21, 9941), (23, 9953),

Gene: Paries_16 Start: 11162, Stop: 11380, Start Num: 12

Candidate Starts for Paries_16:

(3, 10892), (5, 10967), (7, 11021), (8, 11084), (11, 11126), (Start: 12 @11162 has 58 MA's), (16, 11237), (20, 11276), (21, 11282), (23, 11294),

Gene: Phauci_9 Start: 7921, Stop: 8124, Start Num: 12

Candidate Starts for Phauci_9:

(5, 7723), (7, 7777), (9, 7864), (10, 7876), (Start: 12 @7921 has 58 MA's), (15, 7945), (17, 7990), (21, 8032), (23, 8044),

Gene: Phinally_16 Start: 11388, Stop: 11591, Start Num: 12

Candidate Starts for Phinally_16:

(5, 11190), (7, 11244), (9, 11331), (10, 11343), (Start: 12 @11388 has 58 MA's), (15, 11412), (17, 11457), (21, 11499), (23, 11511), (25, 11559),

Gene: Ribeye_17 Start: 10948, Stop: 11166, Start Num: 12

Candidate Starts for Ribeye_17:

(5, 10753), (7, 10807), (8, 10870), (11, 10912), (Start: 12 @10948 has 58 MA's), (14, 10966), (16, 11023), (20, 11062), (21, 11068), (22, 11071), (23, 11080),

Gene: RiverRaider_17 Start: 10375, Stop: 10593, Start Num: 12

Candidate Starts for RiverRaider_17:

(11, 10339), (Start: 12 @10375 has 58 MA's), (14, 10393), (16, 10450), (20, 10489), (21, 10495), (23, 10507),

Gene: RoadKill_14 Start: 9718, Stop: 9939, Start Num: 12

Candidate Starts for RoadKill_14:

(5, 9523), (7, 9577), (10, 9673), (11, 9682), (Start: 12 @9718 has 58 MA's), (15, 9757), (21, 9844), (23, 9856),

Gene: Rofo_15 Start: 11414, Stop: 11632, Start Num: 12

Candidate Starts for Rofo_15:

(3, 11144), (5, 11219), (7, 11273), (8, 11336), (11, 11378), (Start: 12 @11414 has 58 MA's), (16, 11489), (20, 11528), (21, 11534), (23, 11546),

Gene: Sanjuju_14 Start: 11339, Stop: 11557, Start Num: 12

Candidate Starts for Sanjuju_14:

(1, 10781), (3, 11069), (5, 11144), (7, 11198), (8, 11261), (11, 11303), (Start: 12 @11339 has 58 MA's), (16, 11414), (20, 11453), (21, 11459), (23, 11471),

Gene: Saronaya_16 Start: 10762, Stop: 10977, Start Num: 12

Candidate Starts for Saronaya_16:

(11, 10726), (Start: 12 @10762 has 58 MA's), (14, 10780), (16, 10837), (21, 10882), (23, 10894), (26, 10969),

Gene: SchottB_15 Start: 11751, Stop: 11966, Start Num: 12

Candidate Starts for SchottB_15:

(5, 11556), (7, 11610), (8, 11673), (11, 11715), (Start: 12 @11751 has 58 MA's), (14, 11769), (16, 11826), (21, 11871), (23, 11883), (26, 11958),

Gene: Sedona_17 Start: 13258, Stop: 13476, Start Num: 12

Candidate Starts for Sedona_17:

(3, 12988), (5, 13063), (7, 13117), (8, 13180), (11, 13222), (Start: 12 @13258 has 58 MA's), (16, 13333), (20, 13372), (21, 13378), (23, 13390),

Gene: Shivanishola_16 Start: 11656, Stop: 11874, Start Num: 12

Candidate Starts for Shivanishola_16:

(5, 11461), (7, 11515), (8, 11578), (11, 11620), (Start: 12 @11656 has 58 MA's), (16, 11731), (20, 11770), (21, 11776), (23, 11788),

Gene: Sitar_17 Start: 12632, Stop: 12850, Start Num: 12

Candidate Starts for Sitar_17:

(5, 12437), (7, 12491), (8, 12554), (11, 12596), (Start: 12 @12632 has 58 MA's), (16, 12707), (20, 12746), (21, 12752), (23, 12764),

Gene: StorminNorm_16 Start: 10639, Stop: 10857, Start Num: 12

Candidate Starts for StorminNorm_16:

(8, 10561), (11, 10603), (Start: 12 @10639 has 58 MA's), (14, 10657), (16, 10714), (23, 10771), (26, 10849),

Gene: Stultus_16 Start: 11631, Stop: 11849, Start Num: 12

Candidate Starts for Stultus_16:

(5, 11436), (7, 11490), (8, 11553), (11, 11595), (Start: 12 @11631 has 58 MA's), (16, 11706), (20, 11745), (21, 11751), (23, 11763),

Gene: Tangent_13 Start: 10394, Stop: 10612, Start Num: 12

Candidate Starts for Tangent_13:

(3, 10124), (5, 10199), (7, 10253), (8, 10316), (11, 10358), (Start: 12 @10394 has 58 MA's), (16, 10469), (20, 10508), (21, 10514), (23, 10526),

Gene: Tangerine_16 Start: 10648, Stop: 10863, Start Num: 12

Candidate Starts for Tangerine_16:

(8, 10570), (11, 10612), (Start: 12 @10648 has 58 MA's), (14, 10666), (16, 10723), (21, 10768), (23, 10780), (26, 10855),

Gene: Thing3_17 Start: 12392, Stop: 12610, Start Num: 12

Candidate Starts for Thing3_17:

(3, 12122), (5, 12197), (7, 12251), (8, 12314), (11, 12356), (Start: 12 @12392 has 58 MA's), (16, 12467), (20, 12506), (21, 12512), (23, 12524),

Gene: Tiamoceli_17 Start: 11101, Stop: 11322, Start Num: 12

Candidate Starts for Tiamoceli_17:

(5, 10906), (7, 10960), (10, 11056), (11, 11065), (Start: 12 @11101 has 58 MA's), (15, 11140), (21, 11227),

Gene: Twonlo_14 Start: 9718, Stop: 9939, Start Num: 12

Candidate Starts for Twonlo_14:

(5, 9523), (7, 9577), (10, 9673), (11, 9682), (Start: 12 @9718 has 58 MA's), (15, 9757), (21, 9844),

Gene: Tycho_16 Start: 10762, Stop: 10980, Start Num: 12

Candidate Starts for Tycho_16:

(8, 10684), (11, 10726), (Start: 12 @10762 has 58 MA's), (14, 10780), (16, 10837), (23, 10894), (26, 10972),

Gene: Vivi2_15 Start: 11586, Stop: 11804, Start Num: 12

Candidate Starts for Vivi2_15:

(3, 11316), (5, 11391), (7, 11445), (8, 11508), (11, 11550), (Start: 12 @11586 has 58 MA's), (16, 11661), (20, 11700), (21, 11706), (23, 11718),

Gene: YorkOnyx_16 Start: 10597, Stop: 10812, Start Num: 12

Candidate Starts for YorkOnyx_16:

(5, 10402), (7, 10456), (8, 10519), (11, 10561), (Start: 12 @10597 has 58 MA's), (14, 10615), (16, 10672), (21, 10717), (23, 10729), (26, 10804),