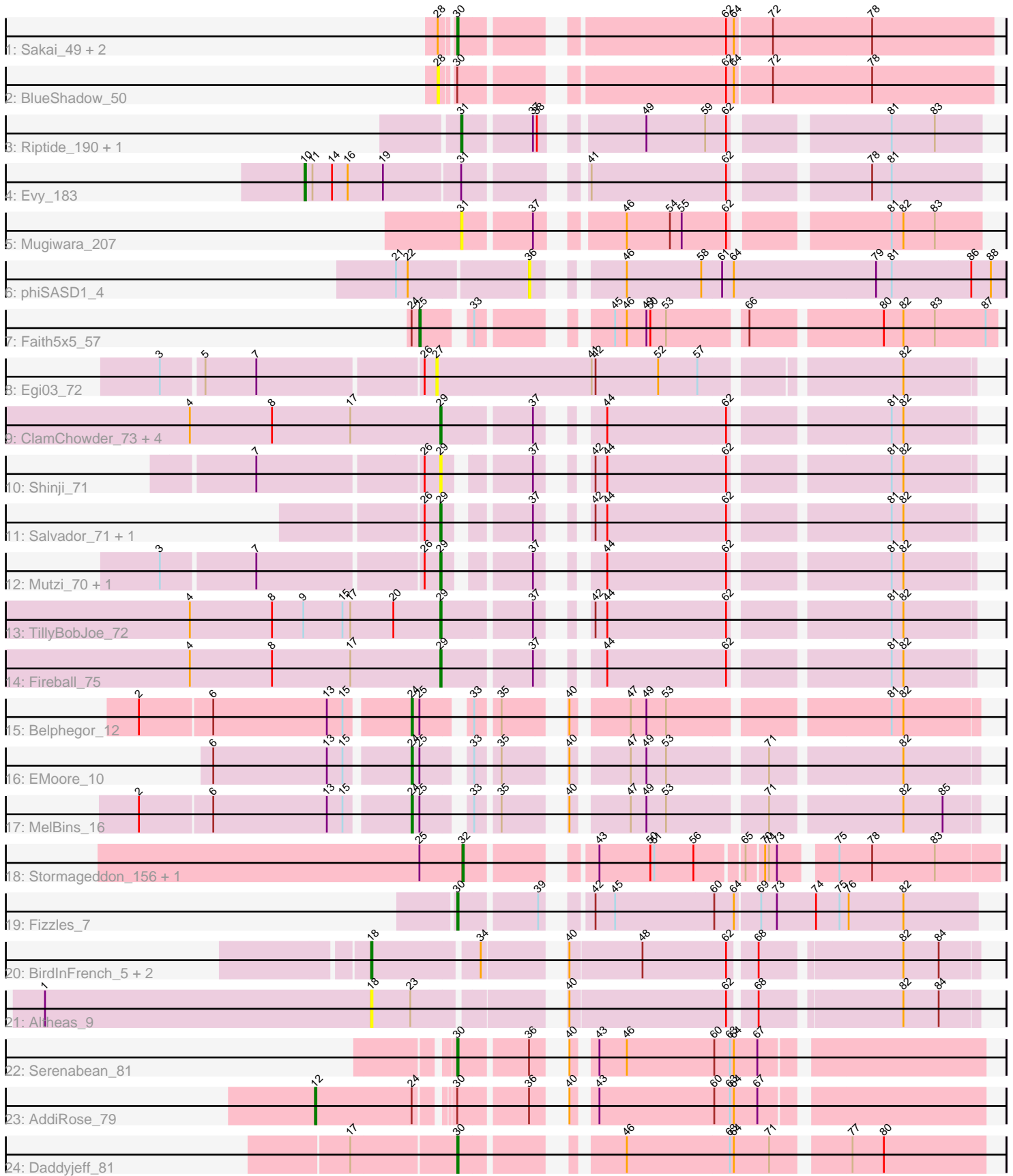


Pham 221608



Note: Tracks are now grouped by subcluster and scaled. Switching in subcluster is indicated by changes in track color. Track scale is now set by default to display the region 30 bp upstream of start 1 to 30 bp downstream of the last possible start. If this default region is judged to be packed too tightly with annotated starts, the track will be further scaled to only show that region of the ORF with annotated starts. This action will be indicated by adding "Zoomed" to the title. For starts, yellow indicates the location of called starts comprised solely of Glimmer/GeneMark auto-annotations, green indicates the location of called starts with at least 1 manual gene annotation.

Pham 221608 Report

This analysis was run 03/28/25 on database version 593.

Pham number 221608 has 36 members, 7 are drafts.

Phages represented in each track:

- Track 1 : Sakai_49, Richie_52, Gorpy_50
- Track 2 : BlueShadow_50
- Track 3 : Riptide_190, Anedea_194
- Track 4 : Evy_183
- Track 5 : Mugiwara_207
- Track 6 : phiSASD1_4
- Track 7 : Faith5x5_57
- Track 8 : Egi03_72
- Track 9 : ClamChowder_73, Barb_73, Danyall_72, Fugax_74, PinkCoffee_73
- Track 10 : Shinji_71
- Track 11 : Salvador_71, Evamon_71
- Track 12 : Mutzi_70, YungMoney_71
- Track 13 : TillyBobJoe_72
- Track 14 : Fireball_75
- Track 15 : Belphegor_12
- Track 16 : EMoore_10
- Track 17 : MelBins_16
- Track 18 : Stormageddon_156, RedWattleHog_155
- Track 19 : Fizzles_7
- Track 20 : BirdInFrench_5, Wilca_5, Pepe25_4
- Track 21 : Altheas_9
- Track 22 : Serenabean_81
- Track 23 : AddiRose_79
- Track 24 : Daddyjeff_81

Summary of Final Annotations (See graph section above for start numbers):

The start number called the most often in the published annotations is 29, it was called in 11 of the 29 non-draft genes in the pham.

Genes that call this "Most Annotated" start:

- Barb_73, ClamChowder_73, Danyall_72, Evamon_71, Fireball_75, Fugax_74, Mutzi_70, PinkCoffee_73, Salvador_71, Shinji_71, TillyBobJoe_72, YungMoney_71,

Genes that have the "Most Annotated" start but do not call it:

-

Genes that do not have the "Most Annotated" start:

- AddiRose_79, Altheas_9, Anedea_194, Belphegor_12, BirdInFrench_5, BlueShadow_50, Daddyjeff_81, EMOore_10, Egi03_72, Evy_183, Faith5x5_57, Fizzles_7, Gorpy_50, MelBins_16, Mugiwara_207, Pepe25_4, RedWattleHog_155, Richie_52, Riptide_190, Sakai_49, Serenabean_81, Stormageddon_156, Wilca_5, phiSASD1_4,

Summary by start number:

Start 10:

- Found in 1 of 36 (2.8%) of genes in pham
- Manual Annotations of this start: 1 of 29
- Called 100.0% of time when present
- Phage (with cluster) where this start called: Evy_183 (BE1),

Start 12:

- Found in 1 of 36 (2.8%) of genes in pham
- Manual Annotations of this start: 1 of 29
- Called 100.0% of time when present
- Phage (with cluster) where this start called: AddiRose_79 (JA),

Start 18:

- Found in 4 of 36 (11.1%) of genes in pham
- Manual Annotations of this start: 3 of 29
- Called 100.0% of time when present
- Phage (with cluster) where this start called: Altheas_9 (EG), BirdInFrench_5 (EG), Pepe25_4 (EG), Wilca_5 (EG),

Start 24:

- Found in 5 of 36 (13.9%) of genes in pham
- Manual Annotations of this start: 3 of 29
- Called 60.0% of time when present
- Phage (with cluster) where this start called: Belphegor_12 (DE), EMOore_10 (DE2), MelBins_16 (DE2),

Start 25:

- Found in 6 of 36 (16.7%) of genes in pham
- Manual Annotations of this start: 1 of 29
- Called 16.7% of time when present
- Phage (with cluster) where this start called: Faith5x5_57 (CZ6),

Start 27:

- Found in 1 of 36 (2.8%) of genes in pham
- No Manual Annotations of this start.
- Called 100.0% of time when present
- Phage (with cluster) where this start called: Egi03_72 (DC1),

Start 28:

- Found in 4 of 36 (11.1%) of genes in pham
- No Manual Annotations of this start.

- Called 25.0% of time when present
- Phage (with cluster) where this start called: BlueShadow_50 (AY),

Start 29:

- Found in 12 of 36 (33.3%) of genes in pham
- Manual Annotations of this start: 11 of 29
- Called 100.0% of time when present
- Phage (with cluster) where this start called: Barb_73 (DC1), ClamChowder_73 (DC1), Danyall_72 (DC1), Evamon_71 (DC1), Fireball_75 (DC1), Fugax_74 (DC1), Mutzi_70 (DC1), PinkCoffee_73 (DC1), Salvador_71 (DC1), Shinji_71 (DC1), TillyBobJoe_72 (DC1), YungMoney_71 (DC1),

Start 30:

- Found in 8 of 36 (22.2%) of genes in pham
- Manual Annotations of this start: 6 of 29
- Called 75.0% of time when present
- Phage (with cluster) where this start called: Daddyjeff_81 (JA), Fizzles_7 (EG), Gorpy_50 (AY), Richie_52 (AY), Sakai_49 (AY), Serenabean_81 (JA),

Start 31:

- Found in 4 of 36 (11.1%) of genes in pham
- Manual Annotations of this start: 1 of 29
- Called 75.0% of time when present
- Phage (with cluster) where this start called: Anedea_194 (BE1), Mugiwara_207 (BE2), Riptide_190 (BE1),

Start 32:

- Found in 2 of 36 (5.6%) of genes in pham
- Manual Annotations of this start: 2 of 29
- Called 100.0% of time when present
- Phage (with cluster) where this start called: RedWattleHog_155 (DX), Stormageddon_156 (DX),

Start 36:

- Found in 3 of 36 (8.3%) of genes in pham
- No Manual Annotations of this start.
- Called 33.3% of time when present
- Phage (with cluster) where this start called: phiSASD1_4 (BJ),

Summary by clusters:

There are 11 clusters represented in this pham: DE2, EG, DE, CZ6, BJ, BE2, DX, AY, BE1, JA, DC1,

Info for manual annotations of cluster AY:

- Start number 30 was manually annotated 3 times for cluster AY.

Info for manual annotations of cluster BE1:

- Start number 10 was manually annotated 1 time for cluster BE1.
- Start number 31 was manually annotated 1 time for cluster BE1.

Info for manual annotations of cluster CZ6:

- Start number 25 was manually annotated 1 time for cluster CZ6.

Info for manual annotations of cluster DC1:

- Start number 29 was manually annotated 11 times for cluster DC1.

Info for manual annotations of cluster DE:

- Start number 24 was manually annotated 1 time for cluster DE.

Info for manual annotations of cluster DE2:

- Start number 24 was manually annotated 2 times for cluster DE2.

Info for manual annotations of cluster DX:

- Start number 32 was manually annotated 2 times for cluster DX.

Info for manual annotations of cluster EG:

- Start number 18 was manually annotated 3 times for cluster EG.
- Start number 30 was manually annotated 1 time for cluster EG.

Info for manual annotations of cluster JA:

- Start number 12 was manually annotated 1 time for cluster JA.
- Start number 30 was manually annotated 2 times for cluster JA.

Gene Information:

Gene: AddiRose_79 Start: 48807, Stop: 49250, Start Num: 12

Candidate Starts for AddiRose_79:

(Start: 12 @48807 has 1 MA's), (Start: 24 @48879 has 3 MA's), (Start: 30 @48900 has 6 MA's), (36, 48948), (40, 48960), (43, 48972), (60, 49059), (63, 49071), (64, 49074), (67, 49092),

Gene: Altheas_9 Start: 2820, Stop: 2407, Start Num: 18

Candidate Starts for Altheas_9:

(1, 3069), (Start: 18 @2820 has 3 MA's), (23, 2790), (40, 2697), (62, 2580), (68, 2562), (82, 2463), (84, 2436),

Gene: Anedea_194 Start: 99583, Stop: 99927, Start Num: 31

Candidate Starts for Anedea_194:

(Start: 31 @99583 has 1 MA's), (37, 99631), (38, 99634), (49, 99694), (59, 99739), (62, 99754), (81, 99859), (83, 99892),

Gene: Barb_73 Start: 50062, Stop: 50412, Start Num: 29

Candidate Starts for Barb_73:

(4, 49870), (8, 49933), (17, 49993), (Start: 29 @50062 has 11 MA's), (37, 50125), (44, 50152), (62, 50242), (81, 50350), (82, 50359),

Gene: Belphegor_12 Start: 9683, Stop: 10045, Start Num: 24

Candidate Starts for Belphegor_12:

(2, 9485), (6, 9539), (13, 9626), (15, 9638), (Start: 24 @9683 has 3 MA's), (Start: 25 @9689 has 1 MA's), (33, 9716), (35, 9731), (40, 9764), (47, 9800), (49, 9812), (53, 9827), (81, 9980), (82, 9989),

Gene: BirdInFrench_5 Start: 1900, Stop: 1487, Start Num: 18

Candidate Starts for BirdInFrench_5:

(Start: 18 @1900 has 3 MA's), (34, 1825), (40, 1777), (48, 1723), (62, 1660), (68, 1642), (82, 1543), (84, 1516),

Gene: BlueShadow_50 Start: 30663, Stop: 31046, Start Num: 28

Candidate Starts for BlueShadow_50:

(28, 30663), (Start: 30 @30672 has 6 MA's), (62, 30846), (64, 30852), (72, 30879), (78, 30954),

Gene: ClamChowder_73 Start: 50062, Stop: 50412, Start Num: 29

Candidate Starts for ClamChowder_73:

(4, 49870), (8, 49933), (17, 49993), (Start: 29 @50062 has 11 MA's), (37, 50125), (44, 50152), (62, 50242), (81, 50350), (82, 50359),

Gene: Daddyjeff_81 Start: 49245, Stop: 49598, Start Num: 30

Candidate Starts for Daddyjeff_81:

(17, 49167), (Start: 30 @49245 has 6 MA's), (46, 49338), (63, 49416), (64, 49419), (71, 49446), (77, 49497), (80, 49521),

Gene: Danyall_72 Start: 50043, Stop: 50393, Start Num: 29

Candidate Starts for Danyall_72:

(4, 49851), (8, 49914), (17, 49974), (Start: 29 @50043 has 11 MA's), (37, 50106), (44, 50133), (62, 50223), (81, 50331), (82, 50340),

Gene: EMoore_10 Start: 8765, Stop: 9127, Start Num: 24

Candidate Starts for EMoore_10:

(6, 8621), (13, 8708), (15, 8720), (Start: 24 @8765 has 3 MA's), (Start: 25 @8771 has 1 MA's), (33, 8798), (35, 8813), (40, 8846), (47, 8882), (49, 8894), (53, 8909), (71, 8978), (82, 9071),

Gene: Egi03_72 Start: 49655, Stop: 50041, Start Num: 27

Candidate Starts for Egi03_72:

(3, 49457), (5, 49487), (7, 49526), (26, 49646), (27, 49655), (41, 49772), (42, 49775), (52, 49823), (57, 49853), (82, 49988),

Gene: Evamon_71 Start: 49838, Stop: 50176, Start Num: 29

Candidate Starts for Evamon_71:

(26, 49826), (Start: 29 @49838 has 11 MA's), (37, 49889), (42, 49907), (44, 49916), (62, 50006), (81, 50114), (82, 50123),

Gene: Evy_183 Start: 100459, Stop: 100920, Start Num: 10

Candidate Starts for Evy_183:

(Start: 10 @100459 has 1 MA's), (11, 100465), (14, 100480), (16, 100492), (19, 100519), (Start: 31 @100576 has 1 MA's), (41, 100645), (62, 100747), (78, 100837), (81, 100852),

Gene: Faith5x5_57 Start: 35656, Stop: 36027, Start Num: 25

Candidate Starts for Faith5x5_57:

(Start: 24 @35650 has 3 MA's), (Start: 25 @35656 has 1 MA's), (33, 35683), (45, 35755), (46, 35764), (49, 35779), (50, 35782), (53, 35794), (66, 35848), (80, 35941), (82, 35956), (83, 35980), (87, 36019),

Gene: Fireball_75 Start: 50740, Stop: 51090, Start Num: 29

Candidate Starts for Fireball_75:

(4, 50548), (8, 50611), (17, 50671), (Start: 29 @50740 has 11 MA's), (37, 50803), (44, 50830), (62, 50920), (81, 51028), (82, 51037),

Gene: Fizzles_7 Start: 2470, Stop: 2108, Start Num: 30

Candidate Starts for Fizzles_7:

(Start: 30 @2470 has 6 MA's), (39, 2416), (42, 2395), (45, 2380), (60, 2305), (64, 2290), (69, 2272), (73, 2260), (74, 2230), (75, 2212), (76, 2206), (82, 2164),

Gene: Fugax_74 Start: 50054, Stop: 50404, Start Num: 29

Candidate Starts for Fugax_74:

(4, 49862), (8, 49925), (17, 49985), (Start: 29 @50054 has 11 MA's), (37, 50117), (44, 50144), (62, 50234), (81, 50342), (82, 50351),

Gene: Gorpy_50 Start: 31667, Stop: 32041, Start Num: 30

Candidate Starts for Gorpy_50:

(28, 31658), (Start: 30 @31667 has 6 MA's), (62, 31841), (64, 31847), (72, 31874), (78, 31949),

Gene: MelBins_16 Start: 11228, Stop: 11590, Start Num: 24

Candidate Starts for MelBins_16:

(2, 11030), (6, 11084), (13, 11171), (15, 11183), (Start: 24 @11228 has 3 MA's), (Start: 25 @11234 has 1 MA's), (33, 11261), (35, 11276), (40, 11309), (47, 11345), (49, 11357), (53, 11372), (71, 11441), (82, 11534), (85, 11564),

Gene: Mugiwara_207 Start: 101653, Stop: 101997, Start Num: 31

Candidate Starts for Mugiwara_207:

(Start: 31 @101653 has 1 MA's), (37, 101701), (46, 101749), (54, 101782), (55, 101791), (62, 101824), (81, 101929), (82, 101938), (83, 101962),

Gene: Mutzi_70 Start: 50930, Stop: 51268, Start Num: 29

Candidate Starts for Mutzi_70:

(3, 50729), (7, 50798), (26, 50918), (Start: 29 @50930 has 11 MA's), (37, 50981), (44, 51008), (62, 51098), (81, 51206), (82, 51215),

Gene: Pepe25_4 Start: 1900, Stop: 1487, Start Num: 18

Candidate Starts for Pepe25_4:

(Start: 18 @1900 has 3 MA's), (34, 1825), (40, 1777), (48, 1723), (62, 1660), (68, 1642), (82, 1543), (84, 1516),

Gene: PinkCoffee_73 Start: 50084, Stop: 50434, Start Num: 29

Candidate Starts for PinkCoffee_73:

(4, 49892), (8, 49955), (17, 50015), (Start: 29 @50084 has 11 MA's), (37, 50147), (44, 50174), (62, 50264), (81, 50372), (82, 50381),

Gene: RedWattleHog_155 Start: 105039, Stop: 105395, Start Num: 32

Candidate Starts for RedWattleHog_155:

(Start: 25 @105006 has 1 MA's), (Start: 32 @105039 has 2 MA's), (43, 105114), (50, 105153), (51, 105156), (56, 105186), (65, 105219), (70, 105231), (71, 105234), (73, 105240), (75, 105276), (78, 105300), (83, 105348),

Gene: Richie_52 Start: 31345, Stop: 31719, Start Num: 30

Candidate Starts for Richie_52:

(28, 31336), (Start: 30 @31345 has 6 MA's), (62, 31519), (64, 31525), (72, 31552), (78, 31627),

Gene: Riptide_190 Start: 98222, Stop: 98566, Start Num: 31

Candidate Starts for Riptide_190:

(Start: 31 @98222 has 1 MA's), (37, 98270), (38, 98273), (49, 98333), (59, 98378), (62, 98393), (81, 98498), (83, 98531),

Gene: Sakai_49 Start: 30378, Stop: 30752, Start Num: 30

Candidate Starts for Sakai_49:

(28, 30369), (Start: 30 @30378 has 6 MA's), (62, 30552), (64, 30558), (72, 30585), (78, 30660),

Gene: Salvador_71 Start: 49836, Stop: 50174, Start Num: 29

Candidate Starts for Salvador_71:

(26, 49824), (Start: 29 @49836 has 11 MA's), (37, 49887), (42, 49905), (44, 49914), (62, 50004), (81, 50112), (82, 50121),

Gene: Serenabean_81 Start: 49415, Stop: 49765, Start Num: 30

Candidate Starts for Serenabean_81:

(Start: 30 @49415 has 6 MA's), (36, 49463), (40, 49475), (43, 49487), (46, 49508), (60, 49574), (63, 49586), (64, 49589), (67, 49607),

Gene: Shinji_71 Start: 49826, Stop: 50164, Start Num: 29

Candidate Starts for Shinji_71:

(7, 49694), (26, 49814), (Start: 29 @49826 has 11 MA's), (37, 49877), (42, 49895), (44, 49904), (62, 49994), (81, 50102), (82, 50111),

Gene: Stormageddon_156 Start: 106003, Stop: 106359, Start Num: 32

Candidate Starts for Stormageddon_156:

(Start: 25 @105970 has 1 MA's), (Start: 32 @106003 has 2 MA's), (43, 106078), (50, 106117), (51, 106120), (56, 106150), (65, 106183), (70, 106195), (71, 106198), (73, 106204), (75, 106240), (78, 106264), (83, 106312),

Gene: TillyBobJoe_72 Start: 50340, Stop: 50690, Start Num: 29

Candidate Starts for TillyBobJoe_72:

(4, 50148), (8, 50211), (9, 50235), (15, 50265), (17, 50271), (20, 50304), (Start: 29 @50340 has 11 MA's), (37, 50403), (42, 50421), (44, 50430), (62, 50520), (81, 50628), (82, 50637),

Gene: Wilca_5 Start: 1900, Stop: 1487, Start Num: 18

Candidate Starts for Wilca_5:

(Start: 18 @1900 has 3 MA's), (34, 1825), (40, 1777), (48, 1723), (62, 1660), (68, 1642), (82, 1543), (84, 1516),

Gene: YungMoney_71 Start: 51770, Stop: 52108, Start Num: 29

Candidate Starts for YungMoney_71:

(3, 51569), (7, 51638), (26, 51758), (Start: 29 @51770 has 11 MA's), (37, 51821), (44, 51848), (62, 51938), (81, 52046), (82, 52055),

Gene: phiSASD1_4 Start: 21332, Stop: 21664, Start Num: 36

Candidate Starts for phiSASD1_4:

(21, 21236), (22, 21245), (36, 21332), (46, 21377), (58, 21434), (61, 21449), (64, 21458), (79, 21566), (81, 21578), (86, 21638), (88, 21653),