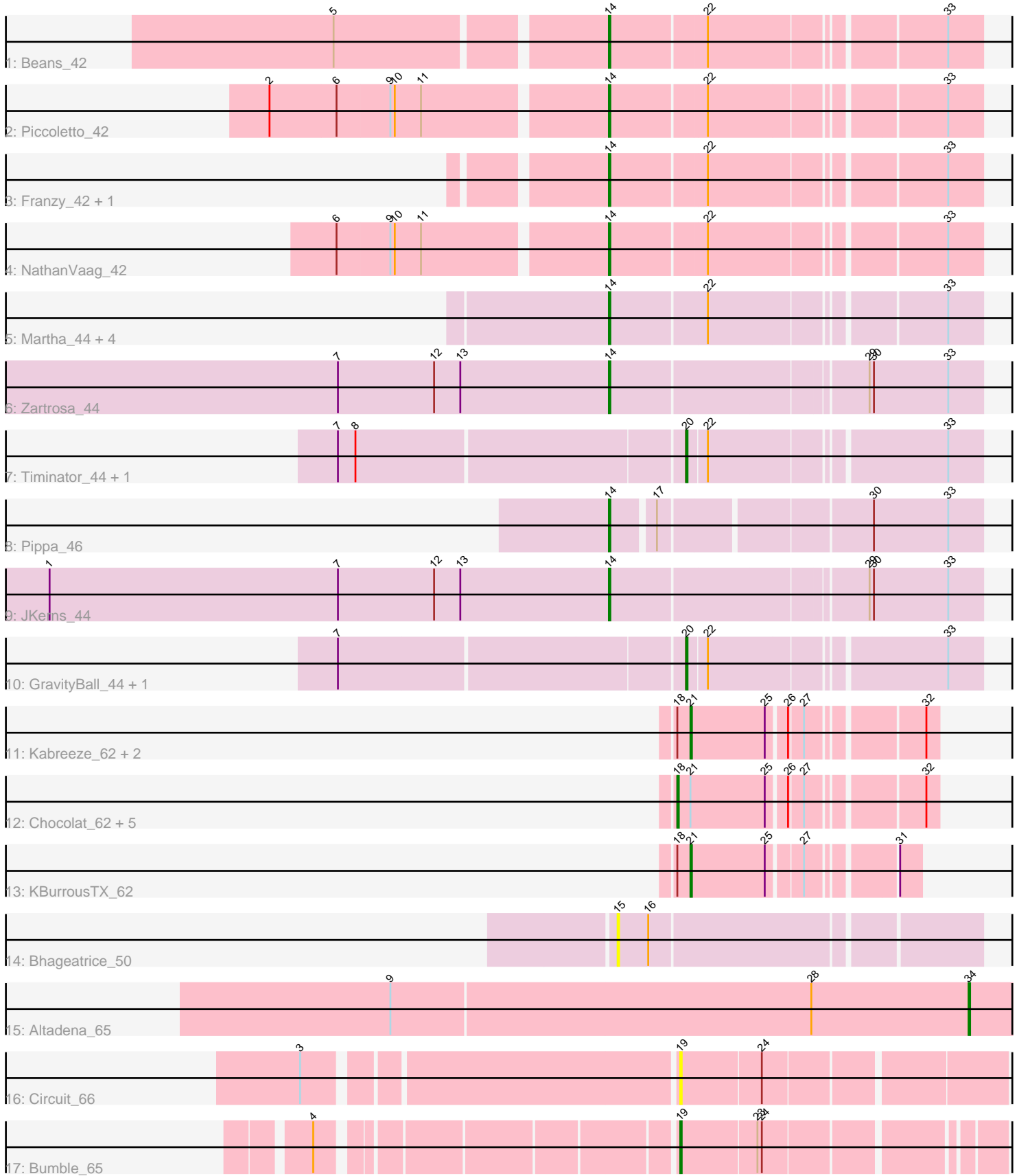


Pham 221659



Note: Tracks are now grouped by subcluster and scaled. Switching in subcluster is indicated by changes in track color. Track scale is now set by default to display the region 30 bp upstream of start 1 to 30 bp downstream of the last possible start. If this default region is judged to be packed too tightly with annotated starts, the track will be further scaled to only show that region of the ORF with annotated starts. This action will be indicated by adding "Zoomed" to the title. For starts, yellow indicates the location of called starts comprised solely of Glimmer/GeneMark auto-annotations, green indicates the location of called starts with at least 1 manual gene annotation.

Pham 221659 Report

This analysis was run 03/28/25 on database version 593.

Pham number 221659 has 31 members, 3 are drafts.

Phages represented in each track:

- Track 1 : Beans_42
- Track 2 : Piccoletto_42
- Track 3 : Franzy_42, Brent_42
- Track 4 : NathanVaag_42
- Track 5 : Martha_44, Grekaycon_44, TaeYoung_44, Sonny_44, Jordan_44
- Track 6 : Zartrosa_44
- Track 7 : Timinator_44, LeeroyJ_44
- Track 8 : Pippa_46
- Track 9 : JKerns_44
- Track 10 : GravityBall_44, StevieBAY_44
- Track 11 : Kabreeze_62, HumptyDumpty_62, Linus_62
- Track 12 : Chocolat_62, MoyaNatalis_62, Colucci_64, Chubster_63, RosiePosie_61, JayCookie_63
- Track 13 : KBurrousTX_62
- Track 14 : Bhageatrice_50
- Track 15 : Altadena_65
- Track 16 : Circuit_66
- Track 17 : Bumble_65

Summary of Final Annotations (See graph section above for start numbers):

The start number called the most often in the published annotations is 14, it was called in 13 of the 28 non-draft genes in the pham.

Genes that call this "Most Annotated" start:

- Beans_42, Brent_42, Franzy_42, Grekaycon_44, JKerns_44, Jordan_44, Martha_44, NathanVaag_42, Piccoletto_42, Pippa_46, Sonny_44, TaeYoung_44, Zartrosa_44,

Genes that have the "Most Annotated" start but do not call it:

-

Genes that do not have the "Most Annotated" start:

- Altadena_65, Bhageatrice_50, Bumble_65, Chocolat_62, Chubster_63, Circuit_66, Colucci_64, GravityBall_44, HumptyDumpty_62, JayCookie_63, KBurrousTX_62, Kabreeze_62, LeeroyJ_44, Linus_62, MoyaNatalis_62, RosiePosie_61, StevieBAY_44, Timinator_44,

Summary by start number:

Start 14:

- Found in 13 of 31 (41.9%) of genes in pham
- Manual Annotations of this start: 13 of 28
- Called 100.0% of time when present
- Phage (with cluster) where this start called: Beans_42 (AO1), Brent_42 (AO1), Franzy_42 (AO1), Grekaycon_44 (AO2), JKerns_44 (AO2), Jordan_44 (AO2), Martha_44 (AO2), NathanVaag_42 (AO1), Piccoletto_42 (AO1), Pippa_46 (AO2), Sonny_44 (AO2), TaeYoung_44 (AO2), Zartrosa_44 (AO2),

Start 15:

- Found in 1 of 31 (3.2%) of genes in pham
- No Manual Annotations of this start.
- Called 100.0% of time when present
- Phage (with cluster) where this start called: Bhageatrice_50 (AY),

Start 18:

- Found in 10 of 31 (32.3%) of genes in pham
- Manual Annotations of this start: 5 of 28
- Called 60.0% of time when present
- Phage (with cluster) where this start called: Chocolat_62 (AR), Chubster_63 (AR), Colucci_64 (AR), JayCookie_63 (AR), MoyaNatalis_62 (AR), RosiePosie_61 (AR),

Start 19:

- Found in 2 of 31 (6.5%) of genes in pham
- Manual Annotations of this start: 1 of 28
- Called 100.0% of time when present
- Phage (with cluster) where this start called: Bumble_65 (FH), Circuit_66 (FH),

Start 20:

- Found in 4 of 31 (12.9%) of genes in pham
- Manual Annotations of this start: 4 of 28
- Called 100.0% of time when present
- Phage (with cluster) where this start called: GravityBall_44 (AO2), LeeroyJ_44 (AO2), StevieBAY_44 (AO2), Timinator_44 (AO2),

Start 21:

- Found in 10 of 31 (32.3%) of genes in pham
- Manual Annotations of this start: 4 of 28
- Called 40.0% of time when present
- Phage (with cluster) where this start called: HumptyDumpty_62 (AR), KBurrousTX_62 (AR), Kabreeze_62 (AR), Linus_62 (AR),

Start 34:

- Found in 1 of 31 (3.2%) of genes in pham
- Manual Annotations of this start: 1 of 28
- Called 100.0% of time when present

- Phage (with cluster) where this start called: Altadena_65 (FH),

Summary by clusters:

There are 5 clusters represented in this pham: FH, AY, AR, AO2, AO1,

Info for manual annotations of cluster AO1:

- Start number 14 was manually annotated 5 times for cluster AO1.

Info for manual annotations of cluster AO2:

- Start number 14 was manually annotated 8 times for cluster AO2.
- Start number 20 was manually annotated 4 times for cluster AO2.

Info for manual annotations of cluster AR:

- Start number 18 was manually annotated 5 times for cluster AR.
- Start number 21 was manually annotated 4 times for cluster AR.

Info for manual annotations of cluster FH:

- Start number 19 was manually annotated 1 time for cluster FH.
- Start number 34 was manually annotated 1 time for cluster FH.

Gene Information:

Gene: Altadena_65 Start: 42328, Stop: 42143, Start Num: 34

Candidate Starts for Altadena_65:

(9, 42721), (28, 42436), (Start: 34 @42328 has 1 MA's),

Gene: Beans_42 Start: 34760, Stop: 34993, Start Num: 14

Candidate Starts for Beans_42:

(5, 34589), (Start: 14 @34760 has 13 MA's), (22, 34823), (33, 34970),

Gene: Bhageatrice_50 Start: 32024, Stop: 32257, Start Num: 15

Candidate Starts for Bhageatrice_50:

(15, 32024), (16, 32045),

Gene: Brent_42 Start: 34704, Stop: 34937, Start Num: 14

Candidate Starts for Brent_42:

(Start: 14 @34704 has 13 MA's), (22, 34767), (33, 34914),

Gene: Bumble_65 Start: 43235, Stop: 43035, Start Num: 19

Candidate Starts for Bumble_65:

(4, 43451), (Start: 19 @43235 has 1 MA's), (23, 43184), (24, 43181),

Gene: Chocolat_62 Start: 44717, Stop: 44875, Start Num: 18

Candidate Starts for Chocolat_62:

(Start: 18 @44717 has 5 MA's), (Start: 21 @44726 has 4 MA's), (25, 44777), (26, 44789), (27, 44798), (32, 44867),

Gene: Chubster_63 Start: 44869, Stop: 45027, Start Num: 18

Candidate Starts for Chubster_63:

(Start: 18 @44869 has 5 MA's), (Start: 21 @44878 has 4 MA's), (25, 44929), (26, 44941), (27, 44950), (32, 45019),

Gene: Circuit_66 Start: 43968, Stop: 43759, Start Num: 19

Candidate Starts for Circuit_66:

(3, 44205), (Start: 19 @43968 has 1 MA's), (24, 43914),

Gene: Colucci_64 Start: 44773, Stop: 44931, Start Num: 18

Candidate Starts for Colucci_64:

(Start: 18 @44773 has 5 MA's), (Start: 21 @44782 has 4 MA's), (25, 44833), (26, 44845), (27, 44854), (32, 44923),

Gene: Franzy_42 Start: 34720, Stop: 34953, Start Num: 14

Candidate Starts for Franzy_42:

(Start: 14 @34720 has 13 MA's), (22, 34783), (33, 34930),

Gene: GravityBall_44 Start: 34997, Stop: 35182, Start Num: 20

Candidate Starts for GravityBall_44:

(7, 34769), (Start: 20 @34997 has 4 MA's), (22, 35009), (33, 35159),

Gene: Grekaycon_44 Start: 34909, Stop: 35142, Start Num: 14

Candidate Starts for Grekaycon_44:

(Start: 14 @34909 has 13 MA's), (22, 34972), (33, 35119),

Gene: HumptyDumpty_62 Start: 44665, Stop: 44814, Start Num: 21

Candidate Starts for HumptyDumpty_62:

(Start: 18 @44656 has 5 MA's), (Start: 21 @44665 has 4 MA's), (25, 44716), (26, 44728), (27, 44737), (32, 44806),

Gene: JKerns_44 Start: 34994, Stop: 35236, Start Num: 14

Candidate Starts for JKerns_44:

(1, 34610), (7, 34808), (12, 34874), (13, 34892), (Start: 14 @34994 has 13 MA's), (29, 35159), (30, 35162), (33, 35213),

Gene: JayCookie_63 Start: 45128, Stop: 45286, Start Num: 18

Candidate Starts for JayCookie_63:

(Start: 18 @45128 has 5 MA's), (Start: 21 @45137 has 4 MA's), (25, 45188), (26, 45200), (27, 45209), (32, 45278),

Gene: Jordan_44 Start: 34995, Stop: 35228, Start Num: 14

Candidate Starts for Jordan_44:

(Start: 14 @34995 has 13 MA's), (22, 35058), (33, 35205),

Gene: KBurrousTX_62 Start: 46014, Stop: 46151, Start Num: 21

Candidate Starts for KBurrousTX_62:

(Start: 18 @46005 has 5 MA's), (Start: 21 @46014 has 4 MA's), (25, 46065), (27, 46086), (31, 46137),

Gene: Kabreeze_62 Start: 44744, Stop: 44893, Start Num: 21

Candidate Starts for Kabreeze_62:

(Start: 18 @44735 has 5 MA's), (Start: 21 @44744 has 4 MA's), (25, 44795), (26, 44807), (27, 44816), (32, 44885),

Gene: LeeroyJ_44 Start: 34936, Stop: 35121, Start Num: 20

Candidate Starts for LeeroyJ_44:

(7, 34708), (8, 34720), (Start: 20 @34936 has 4 MA's), (22, 34948), (33, 35098),

Gene: Linus_62 Start: 44867, Stop: 45016, Start Num: 21

Candidate Starts for Linus_62:

(Start: 18 @44858 has 5 MA's), (Start: 21 @44867 has 4 MA's), (25, 44918), (26, 44930), (27, 44939), (32, 45008),

Gene: Martha_44 Start: 34886, Stop: 35119, Start Num: 14

Candidate Starts for Martha_44:

(Start: 14 @34886 has 13 MA's), (22, 34949), (33, 35096),

Gene: MoyaNatalis_62 Start: 44704, Stop: 44862, Start Num: 18

Candidate Starts for MoyaNatalis_62:

(Start: 18 @44704 has 5 MA's), (Start: 21 @44713 has 4 MA's), (25, 44764), (26, 44776), (27, 44785), (32, 44854),

Gene: NathanVaag_42 Start: 34655, Stop: 34888, Start Num: 14

Candidate Starts for NathanVaag_42:

(6, 34481), (9, 34517), (10, 34520), (11, 34538), (Start: 14 @34655 has 13 MA's), (22, 34718), (33, 34865),

Gene: Piccoletto_42 Start: 34680, Stop: 34913, Start Num: 14

Candidate Starts for Piccoletto_42:

(2, 34461), (6, 34506), (9, 34542), (10, 34545), (11, 34563), (Start: 14 @34680 has 13 MA's), (22, 34743), (33, 34890),

Gene: Pippa_46 Start: 35371, Stop: 35607, Start Num: 14

Candidate Starts for Pippa_46:

(Start: 14 @35371 has 13 MA's), (17, 35398), (30, 35533), (33, 35584),

Gene: RosiePosie_61 Start: 44394, Stop: 44552, Start Num: 18

Candidate Starts for RosiePosie_61:

(Start: 18 @44394 has 5 MA's), (Start: 21 @44403 has 4 MA's), (25, 44454), (26, 44466), (27, 44475), (32, 44544),

Gene: Sonny_44 Start: 35004, Stop: 35237, Start Num: 14

Candidate Starts for Sonny_44:

(Start: 14 @35004 has 13 MA's), (22, 35067), (33, 35214),

Gene: StevieBAY_44 Start: 34997, Stop: 35182, Start Num: 20

Candidate Starts for StevieBAY_44:

(7, 34769), (Start: 20 @34997 has 4 MA's), (22, 35009), (33, 35159),

Gene: TaeYoung_44 Start: 34910, Stop: 35143, Start Num: 14

Candidate Starts for TaeYoung_44:

(Start: 14 @34910 has 13 MA's), (22, 34973), (33, 35120),

Gene: Timinator_44 Start: 34936, Stop: 35121, Start Num: 20

Candidate Starts for Timinator_44:

(7, 34708), (8, 34720), (Start: 20 @34936 has 4 MA's), (22, 34948), (33, 35098),

Gene: Zartrosa_44 Start: 34947, Stop: 35189, Start Num: 14

Candidate Starts for Zartrosa_44:

(7, 34761), (12, 34827), (13, 34845), (Start: 14 @34947 has 13 MA's), (29, 35112), (30, 35115), (33, 35166),