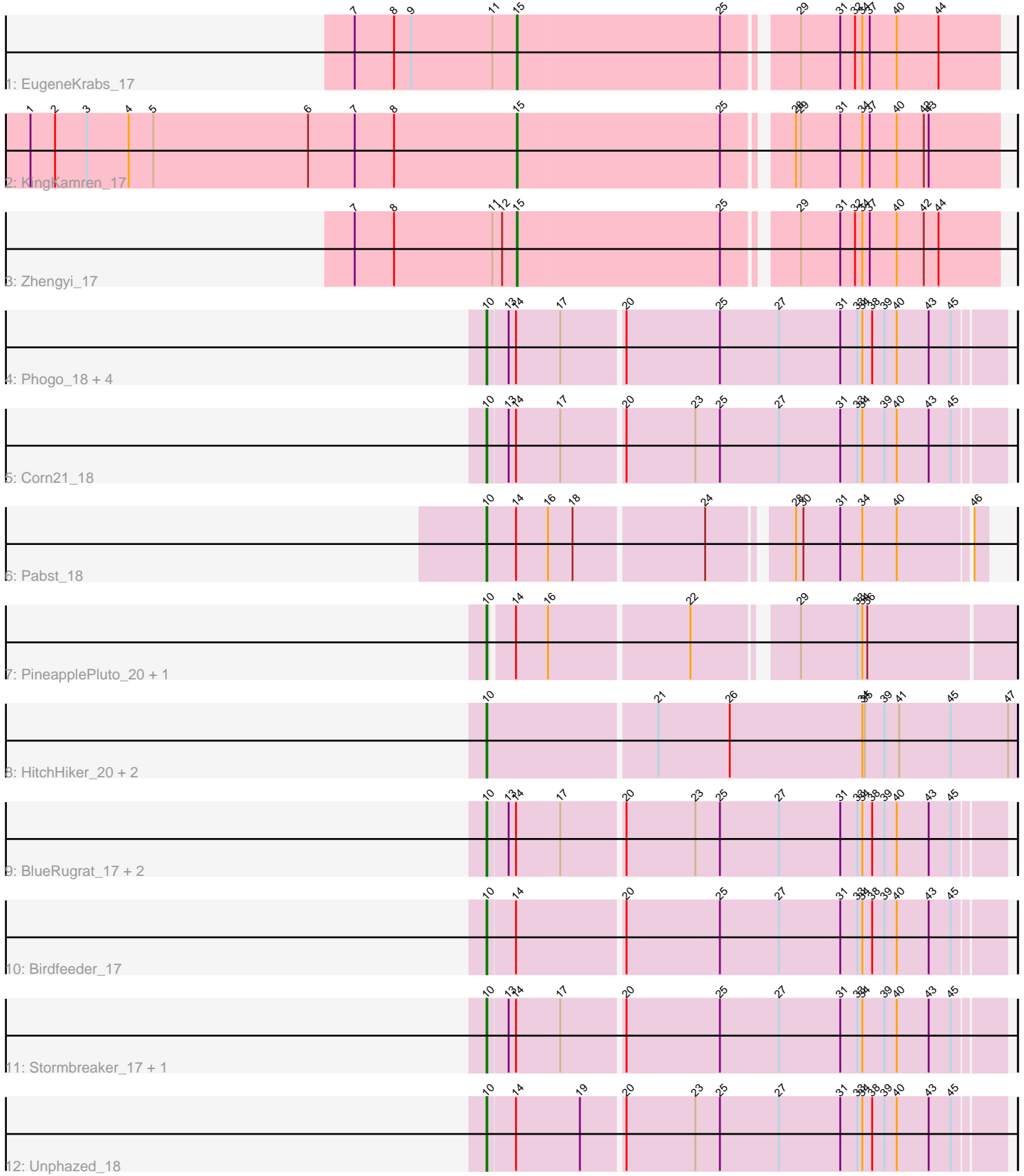


Pham 221760



Note: Tracks are now grouped by subcluster and scaled. Switching in subcluster is indicated by changes in track color. Track scale is now set by default to display the region 30 bp upstream of start 1 to 30 bp downstream of the last possible start. If this default region is judged to be packed too tightly with annotated starts, the track will be further scaled to only show that region of the ORF with annotated starts. This action will be indicated by adding "Zoomed" to the title. For starts, yellow indicates the location of called starts comprised solely of Glimmer/GeneMark auto-annotations, green indicates the location of called starts with at least 1 manual gene annotation.

Pham 221760 Report

This analysis was run 03/28/25 on database version 593.

Pham number 221760 has 22 members, 3 are drafts.

Phages represented in each track:

- Track 1 : EugeneKrabs_17
- Track 2 : KingKamren_17
- Track 3 : Zhengyi_17
- Track 4 : Phogo_18, SwissCheezer_17, LilyLou_18, DumpQuist_17, Dashyla_17
- Track 5 : Corn21_18
- Track 6 : Pabst_18
- Track 7 : PineapplePluto_20, CrunchyBoi_20
- Track 8 : HitchHiker_20, TicTac_19, Biozilla_19
- Track 9 : BlueRugrat_17, LesNorah_17, ArMaWen_17
- Track 10 : Birdfeeder_17
- Track 11 : Stormbreaker_17, Alex44_18
- Track 12 : Unphazed_18

Summary of Final Annotations (See graph section above for start numbers):

The start number called the most often in the published annotations is 10, it was called in 16 of the 19 non-draft genes in the pham.

Genes that call this "Most Annotated" start:

- Alex44_18, ArMaWen_17, Biozilla_19, Birdfeeder_17, BlueRugrat_17, Corn21_18, CrunchyBoi_20, Dashyla_17, DumpQuist_17, HitchHiker_20, LesNorah_17, LilyLou_18, Pabst_18, Phogo_18, PineapplePluto_20, Stormbreaker_17, SwissCheezer_17, TicTac_19, Unphazed_18,

Genes that have the "Most Annotated" start but do not call it:

-

Genes that do not have the "Most Annotated" start:

- EugeneKrabs_17, KingKamren_17, Zhengyi_17,

Summary by start number:

Start 10:

- Found in 19 of 22 (86.4%) of genes in pham

- Manual Annotations of this start: 16 of 19
- Called 100.0% of time when present
- Phage (with cluster) where this start called: Alex44_18 (EK1), ArMaWen_17 (EK1), Biozilla_19 (EK1), Birdfeeder_17 (EK1), BlueRugrat_17 (EK1), Corn21_18 (EK1), CrunchyBoi_20 (EK1), Dashyla_17 (EK1), DumpQuist_17 (EK1), HitchHiker_20 (EK1), LesNorah_17 (EK1), LilyLou_18 (EK1), Pabst_18 (EK1), Phogo_18 (EK1), PineapplePluto_20 (EK1), Stormbreaker_17 (EK1), SwissCheezer_17 (EK1), TicTac_19 (EK1), Unphazed_18 (EK1),

Start 15:

- Found in 3 of 22 (13.6%) of genes in pham
- Manual Annotations of this start: 3 of 19
- Called 100.0% of time when present
- Phage (with cluster) where this start called: EugeneKrabs_17 (EK), KingKamren_17 (EK), Zhengyi_17 (EK),

Summary by clusters:

There are 2 clusters represented in this pham: EK1, EK,

Info for manual annotations of cluster EK:

- Start number 15 was manually annotated 3 times for cluster EK.

Info for manual annotations of cluster EK1:

- Start number 10 was manually annotated 16 times for cluster EK1.

Gene Information:

Gene: Alex44_18 Start: 12293, Stop: 11682, Start Num: 10

Candidate Starts for Alex44_18:

(Start: 10 @12293 has 16 MA's), (13, 12269), (14, 12260), (17, 12209), (20, 12137), (25, 12023), (27, 11951), (31, 11876), (33, 11855), (34, 11849), (39, 11822), (40, 11807), (43, 11768), (45, 11741),

Gene: ArMaWen_17 Start: 11877, Stop: 11266, Start Num: 10

Candidate Starts for ArMaWen_17:

(Start: 10 @11877 has 16 MA's), (13, 11853), (14, 11844), (17, 11793), (20, 11721), (23, 11637), (25, 11607), (27, 11535), (31, 11460), (33, 11439), (34, 11433), (38, 11421), (39, 11406), (40, 11391), (43, 11352), (45, 11325),

Gene: Biozilla_19 Start: 12718, Stop: 12086, Start Num: 10

Candidate Starts for Biozilla_19:

(Start: 10 @12718 has 16 MA's), (21, 12520), (26, 12433), (34, 12274), (35, 12271), (39, 12247), (41, 12229), (45, 12166), (47, 12097),

Gene: Birdfeeder_17 Start: 12240, Stop: 11626, Start Num: 10

Candidate Starts for Birdfeeder_17:

(Start: 10 @12240 has 16 MA's), (14, 12207), (20, 12081), (25, 11967), (27, 11895), (31, 11820), (33, 11799), (34, 11793), (38, 11781), (39, 11766), (40, 11751), (43, 11712), (45, 11685),

Gene: BlueRugrat_17 Start: 12311, Stop: 11700, Start Num: 10

Candidate Starts for BlueRugrat_17:

(Start: 10 @12311 has 16 MA's), (13, 12287), (14, 12278), (17, 12227), (20, 12155), (23, 12071), (25, 12041), (27, 11969), (31, 11894), (33, 11873), (34, 11867), (38, 11855), (39, 11840), (40, 11825), (43, 11786), (45, 11759),

Gene: Corn21_18 Start: 12616, Stop: 12005, Start Num: 10

Candidate Starts for Corn21_18:

(Start: 10 @12616 has 16 MA's), (13, 12592), (14, 12583), (17, 12532), (20, 12460), (23, 12376), (25, 12346), (27, 12274), (31, 12199), (33, 12178), (34, 12172), (39, 12145), (40, 12130), (43, 12091), (45, 12064),

Gene: CrunchyBoi_20 Start: 12670, Stop: 12077, Start Num: 10

Candidate Starts for CrunchyBoi_20:

(Start: 10 @12670 has 16 MA's), (14, 12643), (16, 12604), (22, 12439), (29, 12331), (33, 12262), (34, 12256), (36, 12250),

Gene: Dashyla_17 Start: 11890, Stop: 11279, Start Num: 10

Candidate Starts for Dashyla_17:

(Start: 10 @11890 has 16 MA's), (13, 11866), (14, 11857), (17, 11806), (20, 11734), (25, 11620), (27, 11548), (31, 11473), (33, 11452), (34, 11446), (38, 11434), (39, 11419), (40, 11404), (43, 11365), (45, 11338),

Gene: DumpQuist_17 Start: 11880, Stop: 11269, Start Num: 10

Candidate Starts for DumpQuist_17:

(Start: 10 @11880 has 16 MA's), (13, 11856), (14, 11847), (17, 11796), (20, 11724), (25, 11610), (27, 11538), (31, 11463), (33, 11442), (34, 11436), (38, 11424), (39, 11409), (40, 11394), (43, 11355), (45, 11328),

Gene: EugeneKrabs_17 Start: 12140, Stop: 11580, Start Num: 15

Candidate Starts for EugeneKrabs_17:

(7, 12338), (8, 12290), (9, 12269), (11, 12170), (Start: 15 @12140 has 3 MA's), (25, 11894), (29, 11822), (31, 11774), (32, 11756), (34, 11747), (37, 11738), (40, 11705), (44, 11654),

Gene: HitchHiker_20 Start: 12718, Stop: 12086, Start Num: 10

Candidate Starts for HitchHiker_20:

(Start: 10 @12718 has 16 MA's), (21, 12520), (26, 12433), (34, 12274), (35, 12271), (39, 12247), (41, 12229), (45, 12166), (47, 12097),

Gene: KingKamren_17 Start: 12045, Stop: 11485, Start Num: 15

Candidate Starts for KingKamren_17:

(1, 12639), (2, 12609), (3, 12570), (4, 12519), (5, 12489), (6, 12300), (7, 12243), (8, 12195), (Start: 15 @12045 has 3 MA's), (25, 11799), (28, 11733), (29, 11727), (31, 11679), (34, 11652), (37, 11643), (40, 11610), (42, 11577), (43, 11571),

Gene: LesNorah_17 Start: 12404, Stop: 11793, Start Num: 10

Candidate Starts for LesNorah_17:

(Start: 10 @12404 has 16 MA's), (13, 12380), (14, 12371), (17, 12320), (20, 12248), (23, 12164), (25, 12134), (27, 12062), (31, 11987), (33, 11966), (34, 11960), (38, 11948), (39, 11933), (40, 11918), (43, 11879), (45, 11852),

Gene: LilyLou_18 Start: 12254, Stop: 11643, Start Num: 10

Candidate Starts for LilyLou_18:

(Start: 10 @12254 has 16 MA's), (13, 12230), (14, 12221), (17, 12170), (20, 12098), (25, 11984), (27, 11912), (31, 11837), (33, 11816), (34, 11810), (38, 11798), (39, 11783), (40, 11768), (43, 11729), (45,

11702),

Gene: Pabst_18 Start: 12378, Stop: 11812, Start Num: 10

Candidate Starts for Pabst_18:

(Start: 10 @12378 has 16 MA's), (14, 12342), (16, 12303), (18, 12273), (24, 12120), (28, 12033), (30, 12024), (31, 11979), (34, 11952), (40, 11910), (46, 11826),

Gene: Phogo_18 Start: 12086, Stop: 11475, Start Num: 10

Candidate Starts for Phogo_18:

(Start: 10 @12086 has 16 MA's), (13, 12062), (14, 12053), (17, 12002), (20, 11930), (25, 11816), (27, 11744), (31, 11669), (33, 11648), (34, 11642), (38, 11630), (39, 11615), (40, 11600), (43, 11561), (45, 11534),

Gene: PineapplePluto_20 Start: 12679, Stop: 12086, Start Num: 10

Candidate Starts for PineapplePluto_20:

(Start: 10 @12679 has 16 MA's), (14, 12652), (16, 12613), (22, 12448), (29, 12340), (33, 12271), (34, 12265), (36, 12259),

Gene: Stormbreaker_17 Start: 12216, Stop: 11605, Start Num: 10

Candidate Starts for Stormbreaker_17:

(Start: 10 @12216 has 16 MA's), (13, 12192), (14, 12183), (17, 12132), (20, 12060), (25, 11946), (27, 11874), (31, 11799), (33, 11778), (34, 11772), (39, 11745), (40, 11730), (43, 11691), (45, 11664),

Gene: SwissCheezer_17 Start: 11853, Stop: 11242, Start Num: 10

Candidate Starts for SwissCheezer_17:

(Start: 10 @11853 has 16 MA's), (13, 11829), (14, 11820), (17, 11769), (20, 11697), (25, 11583), (27, 11511), (31, 11436), (33, 11415), (34, 11409), (38, 11397), (39, 11382), (40, 11367), (43, 11328), (45, 11301),

Gene: TicTac_19 Start: 12730, Stop: 12098, Start Num: 10

Candidate Starts for TicTac_19:

(Start: 10 @12730 has 16 MA's), (21, 12532), (26, 12445), (34, 12286), (35, 12283), (39, 12259), (41, 12241), (45, 12178), (47, 12109),

Gene: Unphazed_18 Start: 12116, Stop: 11502, Start Num: 10

Candidate Starts for Unphazed_18:

(Start: 10 @12116 has 16 MA's), (14, 12083), (19, 12005), (20, 11957), (23, 11873), (25, 11843), (27, 11771), (31, 11696), (33, 11675), (34, 11669), (38, 11657), (39, 11642), (40, 11627), (43, 11588), (45, 11561),

Gene: Zhengyi_17 Start: 12159, Stop: 11599, Start Num: 15

Candidate Starts for Zhengyi_17:

(7, 12357), (8, 12309), (11, 12189), (12, 12177), (Start: 15 @12159 has 3 MA's), (25, 11913), (29, 11841), (31, 11793), (32, 11775), (34, 11766), (37, 11757), (40, 11724), (42, 11691), (44, 11673),