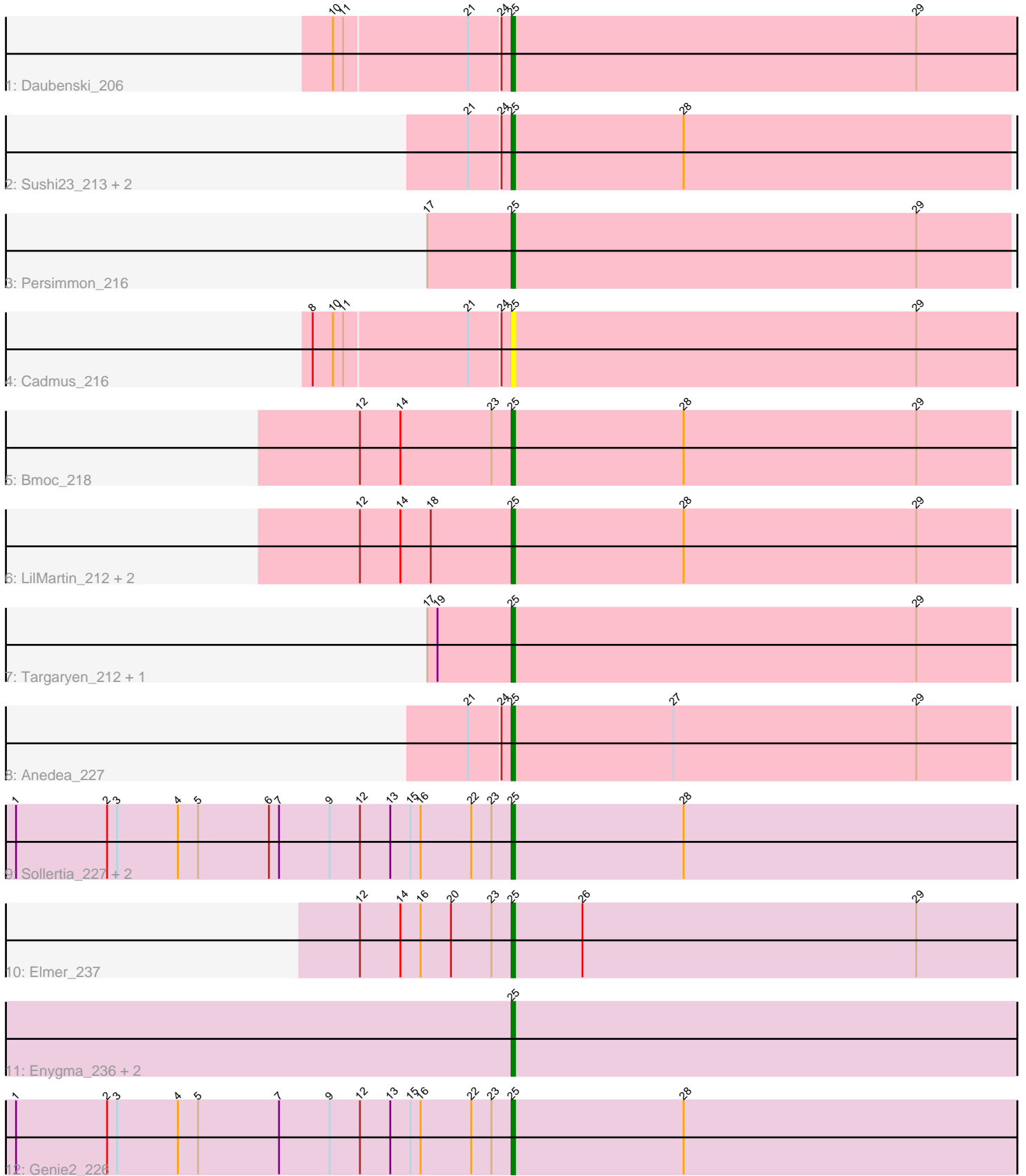


Pham 221784



Note: Tracks are now grouped by subcluster and scaled. Switching in subcluster is indicated by changes in track color. Track scale is now set by default to display the region 30 bp upstream of start 1 to 30 bp downstream of the last possible start. If this default region is judged to be packed too tightly with annotated starts, the track will be further scaled to only show that region of the ORF with annotated starts. This action will be indicated by adding "Zoomed" to the title. For starts, yellow indicates the location of called starts comprised solely of Glimmer/GeneMark auto-annotations, green indicates the location of called starts with at least 1 manual gene annotation.

Pham 221784 Report

This analysis was run 03/28/25 on database version 593.

Pham number 221784 has 21 members, 2 are drafts.

Phages represented in each track:

- Track 1 : Daubenski_206
- Track 2 : Sushi23_213, Cursive_215, Scheme_216
- Track 3 : Persimmon_216
- Track 4 : Cadmus_216
- Track 5 : Bmoc_218
- Track 6 : LilMartin_212, MulchMansion_216, Angela_215
- Track 7 : Targaryen_212, Warpy_216
- Track 8 : Anedea_227
- Track 9 : Sollertia_227, BoomerJR_226, Yaboi_231
- Track 10 : Elmer_237
- Track 11 : Enygma_236, Amabiko_232, Mildred21_222
- Track 12 : Genie2_226

Summary of Final Annotations (See graph section above for start numbers):

The start number called the most often in the published annotations is 25, it was called in 19 of the 19 non-draft genes in the pham.

Genes that call this "Most Annotated" start:

- Amabiko_232, Anedea_227, Angela_215, Bmoc_218, BoomerJR_226, Cadmus_216, Cursive_215, Daubenski_206, Elmer_237, Enygma_236, Genie2_226, LilMartin_212, Mildred21_222, MulchMansion_216, Persimmon_216, Scheme_216, Sollertia_227, Sushi23_213, Targaryen_212, Warpy_216, Yaboi_231,

Genes that have the "Most Annotated" start but do not call it:

-

Genes that do not have the "Most Annotated" start:

-

Summary by start number:

Start 25:

- Found in 21 of 21 (100.0%) of genes in pham

- Manual Annotations of this start: 19 of 19
- Called 100.0% of time when present
- Phage (with cluster) where this start called: Amabiko_232 (BE2), Anedea_227 (BE1), Angela_215 (BE1), Bmoc_218 (BE1), BoomerJR_226 (BE2), Cadmus_216 (BE1), Cursive_215 (BE1), Daubenski_206 (BE1), Elmer_237 (BE2), Enygma_236 (BE2), Genie2_226 (BE2), LilMartin_212 (BE1), Mildred21_222 (BE1), MulchMansion_216 (BE1), Persimmon_216 (BE1), Scheme_216 (BE1), Sollertia_227 (BE2), Sushi23_213 (BE1), Targaryen_212 (BE1), Warpy_216 (BE1), Yaboi_231 (BE2),

Summary by clusters:

There are 2 clusters represented in this pham: BE2, BE1,

Info for manual annotations of cluster BE1:

- Start number 25 was manually annotated 12 times for cluster BE1.

Info for manual annotations of cluster BE2:

- Start number 25 was manually annotated 7 times for cluster BE2.

Gene Information:

Gene: Amabiko_232 Start: 108326, Stop: 108538, Start Num: 25

Candidate Starts for Amabiko_232:

(Start: 25 @108326 has 19 MA's),

Gene: Anedea_227 Start: 108996, Stop: 109190, Start Num: 25

Candidate Starts for Anedea_227:

(21, 108984), (24, 108993), (Start: 25 @108996 has 19 MA's), (27, 109044), (29, 109116),

Gene: Angela_215 Start: 106346, Stop: 106540, Start Num: 25

Candidate Starts for Angela_215:

(12, 106301), (14, 106313), (18, 106322), (Start: 25 @106346 has 19 MA's), (28, 106397), (29, 106466),

Gene: Bmoc_218 Start: 107192, Stop: 107386, Start Num: 25

Candidate Starts for Bmoc_218:

(12, 107147), (14, 107159), (23, 107186), (Start: 25 @107192 has 19 MA's), (28, 107243), (29, 107312),

Gene: BoomerJR_226 Start: 108638, Stop: 108850, Start Num: 25

Candidate Starts for BoomerJR_226:

(1, 108491), (2, 108518), (3, 108521), (4, 108539), (5, 108545), (6, 108566), (7, 108569), (9, 108584), (12, 108593), (13, 108602), (15, 108608), (16, 108611), (22, 108626), (23, 108632), (Start: 25 @108638 has 19 MA's), (28, 108689),

Gene: Cadmus_216 Start: 107541, Stop: 107744, Start Num: 25

Candidate Starts for Cadmus_216:

(8, 107484), (10, 107490), (11, 107493), (21, 107529), (24, 107538), (Start: 25 @107541 has 19 MA's), (29, 107661),

Gene: Cursive_215 Start: 107075, Stop: 107269, Start Num: 25
Candidate Starts for Cursive_215:
(21, 107063), (24, 107072), (Start: 25 @107075 has 19 MA's), (28, 107126),

Gene: Daubenski_206 Start: 107436, Stop: 107639, Start Num: 25
Candidate Starts for Daubenski_206:
(10, 107385), (11, 107388), (21, 107424), (24, 107433), (Start: 25 @107436 has 19 MA's), (29, 107556),

Gene: Elmer_237 Start: 112214, Stop: 112426, Start Num: 25
Candidate Starts for Elmer_237:
(12, 112169), (14, 112181), (16, 112187), (20, 112196), (23, 112208), (Start: 25 @112214 has 19 MA's), (26, 112235), (29, 112334),

Gene: Enygma_236 Start: 111443, Stop: 111655, Start Num: 25
Candidate Starts for Enygma_236:
(Start: 25 @111443 has 19 MA's),

Gene: Genie2_226 Start: 108763, Stop: 108975, Start Num: 25
Candidate Starts for Genie2_226:
(1, 108616), (2, 108643), (3, 108646), (4, 108664), (5, 108670), (7, 108694), (9, 108709), (12, 108718), (13, 108727), (15, 108733), (16, 108736), (22, 108751), (23, 108757), (Start: 25 @108763 has 19 MA's), (28, 108814),

Gene: LilMartin_212 Start: 105710, Stop: 105904, Start Num: 25
Candidate Starts for LilMartin_212:
(12, 105665), (14, 105677), (18, 105686), (Start: 25 @105710 has 19 MA's), (28, 105761), (29, 105830),

Gene: Mildred21_222 Start: 105503, Stop: 105751, Start Num: 25
Candidate Starts for Mildred21_222:
(Start: 25 @105503 has 19 MA's),

Gene: MulchMansion_216 Start: 107344, Stop: 107538, Start Num: 25
Candidate Starts for MulchMansion_216:
(12, 107299), (14, 107311), (18, 107320), (Start: 25 @107344 has 19 MA's), (28, 107395), (29, 107464),

Gene: Persimmon_216 Start: 106493, Stop: 106687, Start Num: 25
Candidate Starts for Persimmon_216:
(17, 106472), (Start: 25 @106493 has 19 MA's), (29, 106613),

Gene: Scheme_216 Start: 108682, Stop: 108876, Start Num: 25
Candidate Starts for Scheme_216:
(21, 108670), (24, 108679), (Start: 25 @108682 has 19 MA's), (28, 108733),

Gene: Sollertia_227 Start: 108752, Stop: 108964, Start Num: 25
Candidate Starts for Sollertia_227:
(1, 108605), (2, 108632), (3, 108635), (4, 108653), (5, 108659), (6, 108680), (7, 108683), (9, 108698), (12, 108707), (13, 108716), (15, 108722), (16, 108725), (22, 108740), (23, 108746), (Start: 25 @108752 has 19 MA's), (28, 108803),

Gene: Sushi23_213 Start: 108044, Stop: 108238, Start Num: 25

Candidate Starts for Sushi23_213:

(21, 108032), (24, 108041), (Start: 25 @108044 has 19 MA's), (28, 108095),

Gene: Targaryen_212 Start: 108246, Stop: 108440, Start Num: 25

Candidate Starts for Targaryen_212:

(17, 108225), (19, 108228), (Start: 25 @108246 has 19 MA's), (29, 108366),

Gene: Warpy_216 Start: 107155, Stop: 107349, Start Num: 25

Candidate Starts for Warpy_216:

(17, 107134), (19, 107137), (Start: 25 @107155 has 19 MA's), (29, 107275),

Gene: Yaboi_231 Start: 108687, Stop: 108899, Start Num: 25

Candidate Starts for Yaboi_231:

(1, 108540), (2, 108567), (3, 108570), (4, 108588), (5, 108594), (6, 108615), (7, 108618), (9, 108633),
(12, 108642), (13, 108651), (15, 108657), (16, 108660), (22, 108675), (23, 108681), (Start: 25
@108687 has 19 MA's), (28, 108738),