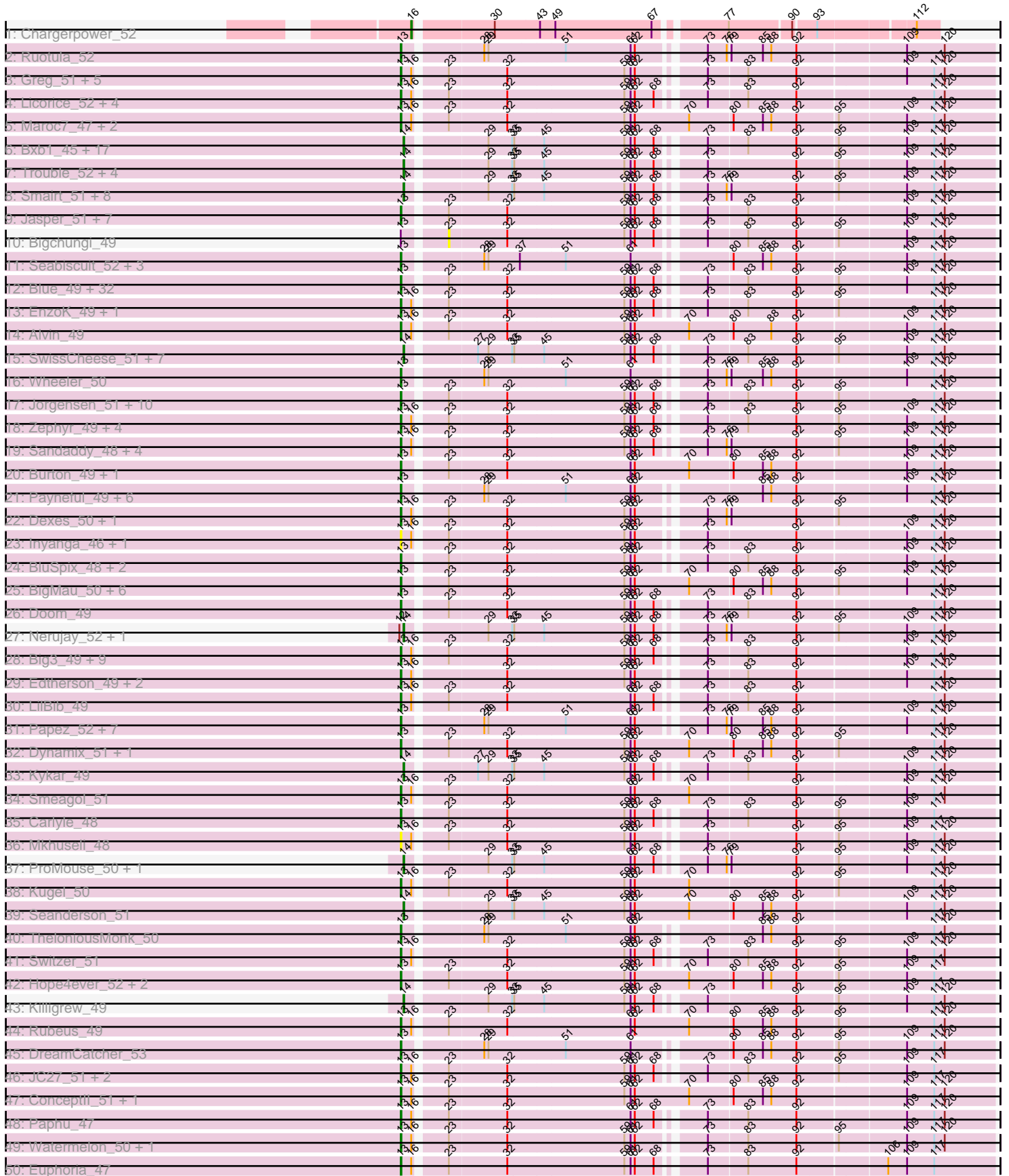
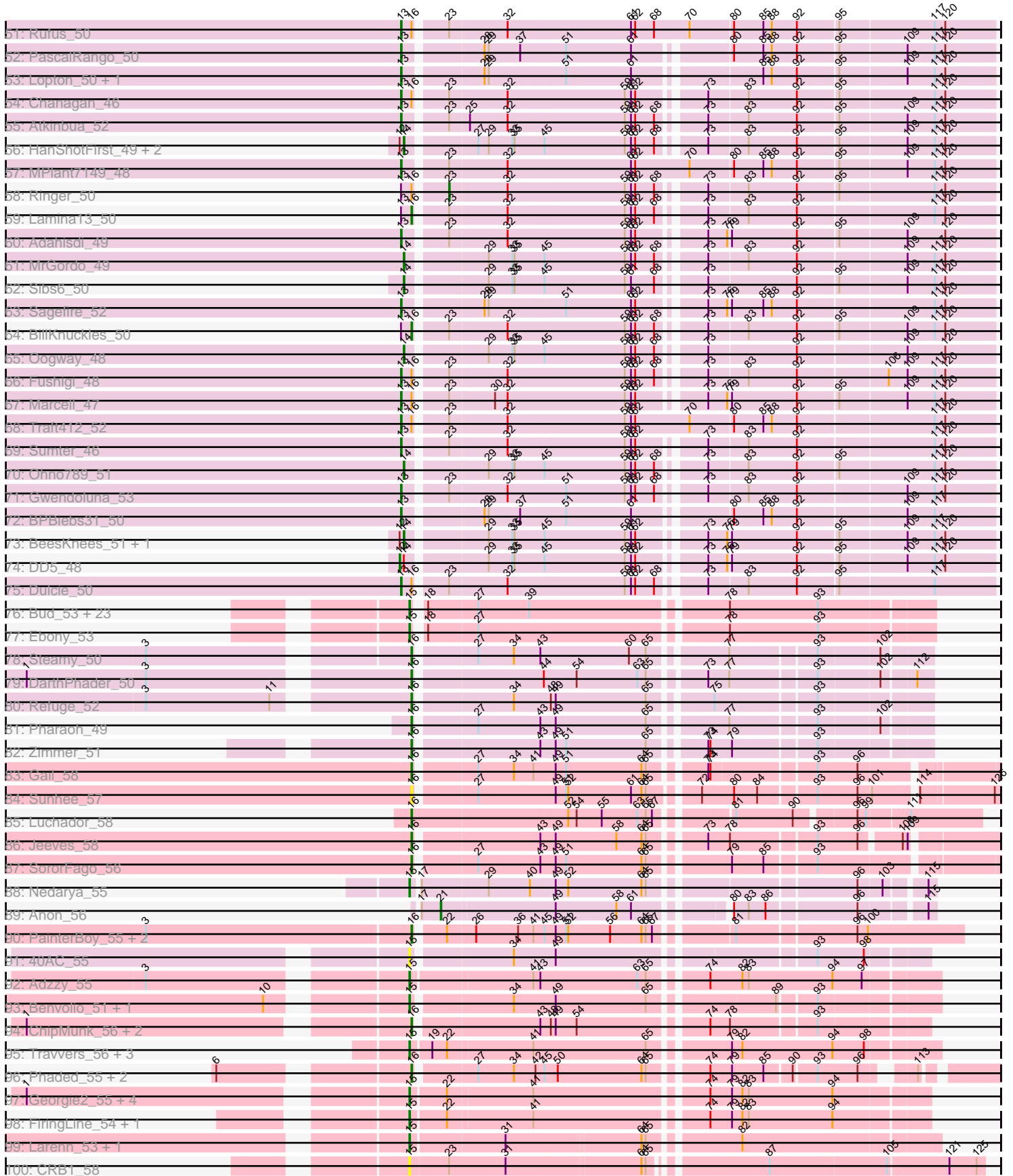


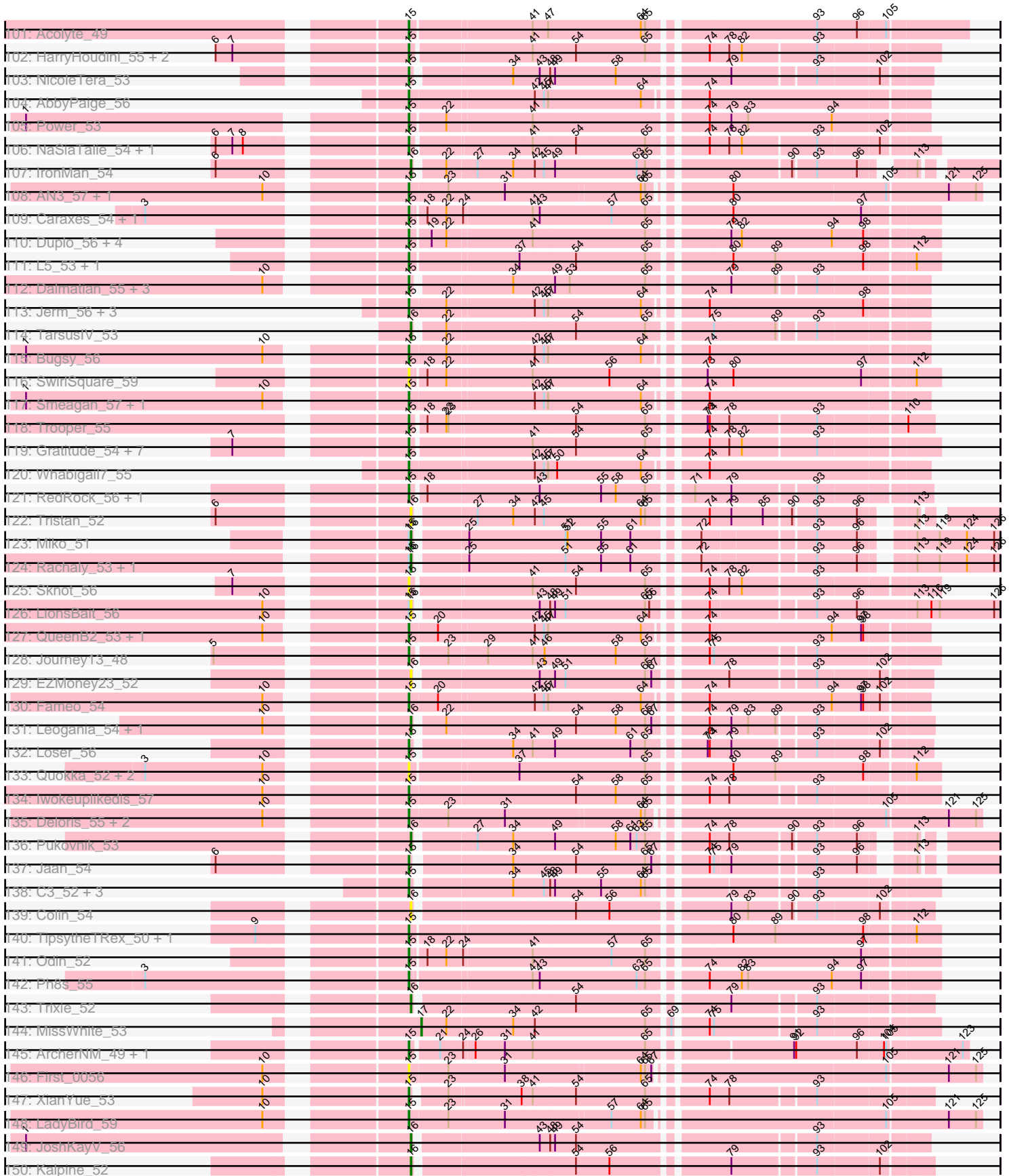
Pham 222791



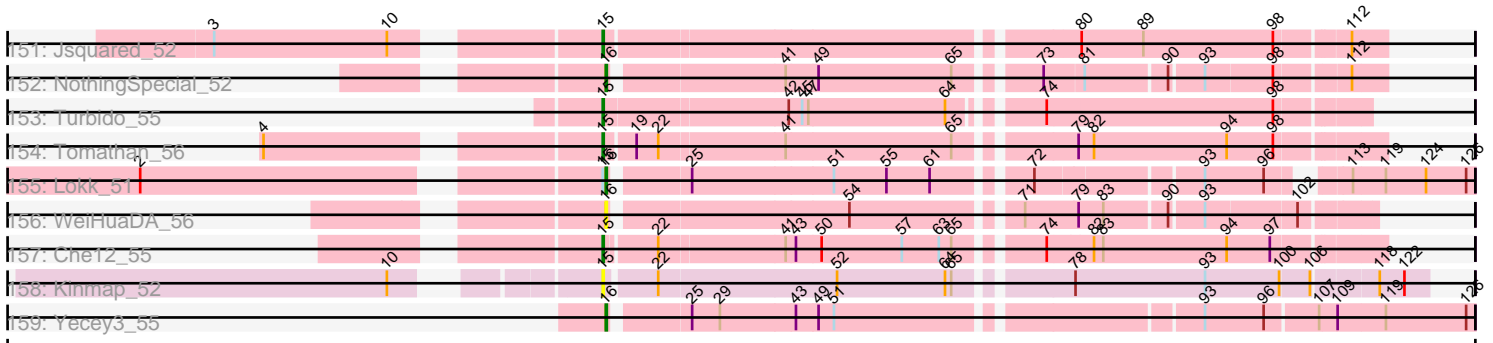
Pham 222791



Pham 222791



Pham 222791



Note: Tracks are now grouped by subcluster and scaled. Switching in subcluster is indicated by changes in track color. Track scale is now set by default to display the region 30 bp upstream of start 1 to 30 bp downstream of the last possible start. If this default region is judged to be packed too tightly with annotated starts, the track will be further scaled to only show that region of the ORF with annotated starts. This action will be indicated by adding "Zoomed" to the title. For starts, yellow indicates the location of called starts comprised solely of Glimmer/GeneMark auto-annotations, green indicates the location of called starts with at least 1 manual gene annotation.

Pham 222791 Report

This analysis was run 03/28/25 on database version 593.

Pham number 222791 has 391 members, 43 are drafts.

Phages represented in each track:

- Track 1 : Chargerpower_52
- Track 2 : Ruotula_52
- Track 3 : Greg_51, Ciao_49, Michley_49, Zeeculate_47, Pippin_51, Fajezeel_51
- Track 4 : Licorice_52, BigPaolini_49, Froghopper_47, Tasp14_51, Marsha_49
- Track 5 : Maroc7_47, Fascinus_45, Mryolo_47
- Track 6 : Bxb1_45, Lesedi_46, JuliaChild_50, Pita2_52, Homines_42, Molly_50, Francis47_48, Bircsak_48, Swole_50, Petp2012_50, PacerPaul_49, Gompeii16_48, TwoPeat_50, PSullivan_49, Tote_45, LunarLander_54, Eyeball_51, Agaliana_45
- Track 7 : Trouble_52, A6_45, BaconJack_52, BK1_45, NEHalo_47
- Track 8 : Smairt_51, Sanya_47, McSinger_50, GMonster_46, PhrostyMug_48, Aeneas_51, Mule_46, Perseus_49, Applejack_44
- Track 9 : Jasper_51, Fenn_52, Squee_50, Naira_52, Bethlehem_50, Dreamboat_51, CactusRose_47, PherrisBueller_49
- Track 10 : Bigchungj_49
- Track 11 : Seabiscuit_52, U2_49, McGuire_51, Ichabod_52
- Track 12 : Blue_49, Barriga_50, Turj99_48, Kenmech_53, Niza_52, Thor_47, SkiPole_54, STLscum_52, Graduation_53, Phlippers_48, Scowl_50, Norz_50, Snazzy_48, Magnito_48, Target_50, Wilkins_49, Topgun_49, Gandalf20_52, Alsfro_53, Paraselene_47, Levia_46, Pepe_46, Espresso_49, Abrogate_480, Zeuska_48, Nhonho_50, SarFire_47, Hami1_43, Rhynn_48, PhineBark_50, Teodoridan_48, Parliament_49, StewieG_48
- Track 13 : EnzoK_49, Rutherford_51
- Track 14 : Alvin_49
- Track 15 : SwissCheese_51, Altman_52, RidgeCB_49, Forsytheast_49, Kanely_51, Crispicous1_47, Bruns_48, Moose_49
- Track 16 : Wheeler_50
- Track 17 : Jorgensen_51, ShortQueendom_43, Corvo_50, Bexan_48, Beatrix_49, StrongArm_49, Raid_50, MaryBeth_49, Makemake_49, Marco3_52, MetalQZJ_48
- Track 18 : Zephyr_49, Magnar_49, Violet_47, BarrowTuph_50, Peterson_54
- Track 19 : Sandaddy_48, AFIS_47, Sorpresa_48, SpikeBT_49, GageAP_50
- Track 20 : Burton_49, Museum_50
- Track 21 : Payneful_49, Arlo_47, Marchy_44, ILeeKay_53, Solon_48, Anglerfish_51, Manatee_51
- Track 22 : Dexes_50, Pelly_49
- Track 23 : Inyanga_46, Iqorha_46
- Track 24 : BluSpix_48, IgnatiusPatJac_50, DrFeelGood_47

- Track 25 : BigMau_50, Rohr_50, Bob3_47, Bones_50, Jerm2_50, HermioneGrange_49, Cueyllyss_51
- Track 26 : Doom_49
- Track 27 : Nerujay_52, JackSparrow_50
- Track 28 : Big3_49, Abbyshoes_52, Dussy_51, Buttons_48, Tripl3t_49, Bigfoot_45, Marge_49, Gyzlar_45, Ajay_51, Petruchio_49
- Track 29 : Edtherson_49, Monet_52, Treddle_50
- Track 30 : LilBib_49
- Track 31 : Papez_52, PattyP_50, Arcanine_50, HarryOW_48, Hermia_50, GrecoEtereo_50, Slagathor_51, KBG_51
- Track 32 : Dynamix_51, Pinto_49
- Track 33 : Kykar_49
- Track 34 : Smeagol_51
- Track 35 : Carlyle_48
- Track 36 : Mkhusele_48
- Track 37 : ProMouse_50, Sunshine924_50
- Track 38 : Kugel_50
- Track 39 : Seanderson_51
- Track 40 : TheloniousMonk_50
- Track 41 : Switzer_51
- Track 42 : Hope4ever_52, Pari_51, Rajelicia_50
- Track 43 : Killigrew_49
- Track 44 : Rubeus_49
- Track 45 : DreamCatcher_53
- Track 46 : JC27_51, Ashballer_51, KyMonks1A_51
- Track 47 : Conceptll_51, Acme_51
- Track 48 : Paphu_47
- Track 49 : Watermelon_50, QTRlifeCrisis_49
- Track 50 : Euphoria_47
- Track 51 : Rufus_50
- Track 52 : PascalRango_50
- Track 53 : Lopton_50, KSSJEB_49
- Track 54 : Chanagan_46
- Track 55 : Atkinbua_52
- Track 56 : HanShotFirst_49, PinkPlastic_49, Briton15_52
- Track 57 : MPlant7149_48
- Track 58 : Ringer_50
- Track 59 : Lamina13_50
- Track 60 : Adahisdi_49
- Track 61 : MrGordo_49
- Track 62 : Sibs6_50
- Track 63 : Sagefire_52
- Track 64 : BillKnuckles_50
- Track 65 : Oogway_48
- Track 66 : Fushigi_48
- Track 67 : Marcell_47
- Track 68 : Traft412_52
- Track 69 : Sumter_46
- Track 70 : Ohno789_51
- Track 71 : Gwendoluna_53
- Track 72 : BPBiabs31_50
- Track 73 : BeesKnees_51, Lockley_48
- Track 74 : DD5_48

- Track 75 : Dulcie_50
- Track 76 : Bud_53, Mulciber_53, Hutc2_53, MaCh_54, Jabith_54, Salz_52, Orange_53, Insomnia_54, TinyTimmy_53, Et2Brutus_52, Flaverint_54, Fibonacci_53, Bowtie_54, Joselito_54, Bachome_55, Sham4_53, Snape_53, Lucivia_54, Mabel_53, Munch_54, Gilberta_54, Timothy_53, Aneem_54, Petersenfast_52
- Track 77 : Ebony_53
- Track 78 : Steamy_50
- Track 79 : DarthPhader_50
- Track 80 : Refuge_52
- Track 81 : Pharaoh_49
- Track 82 : Zimmer_51
- Track 83 : Gail_58
- Track 84 : Sunhee_57
- Track 85 : Luchador_58
- Track 86 : Jeeves_58
- Track 87 : SororFago_56
- Track 88 : Nedarya_55
- Track 89 : Anon_56
- Track 90 : PainterBoy_55, Lucyedi_55, EagleEye_56
- Track 91 : 40AC_55
- Track 92 : Adzzy_55
- Track 93 : Benvolio_51, Echild_54
- Track 94 : ChipMunk_56, EvilGenius_56, KingCyrus_56
- Track 95 : Travvers_56, D32_55, Naji_56, D29_53
- Track 96 : Phaded_55, Landor_54, Bactobuster_53
- Track 97 : Georgie2_55, SweetiePie_54, SnapTap_54, SemperFi_55, Crucio_54
- Track 98 : FiringLine_54, QueenBeesly_54
- Track 99 : Larenn_53, Malec_54
- Track 100 : CRB1_58
- Track 101 : Acolyte_49
- Track 102 : HarryHoudini_55, Drake55_56, Piro94_54
- Track 103 : NicoleTera_53
- Track 104 : AbbyPaige_56
- Track 105 : Power_53
- Track 106 : NaSiaTalie_54, Flare16_54
- Track 107 : IronMan_54
- Track 108 : AN3_57, VA6_55
- Track 109 : Caraxes_54, Superchunk_52
- Track 110 : Duplo_56, StarStuff_56, Kerberos_56, DBQu4n_56, Pomar16_56
- Track 111 : L5_53, Koduck_55
- Track 112 : Dalmatian_55, DudeLittle_53, Retro23_55, Anselm_55
- Track 113 : Jerm_56, Leviathan_56, Agape74_56, LilTurb_55
- Track 114 : TarsusIV_53
- Track 115 : Buggy_56
- Track 116 : SwirlSquare_59
- Track 117 : Smeagan_57, Dignity_56
- Track 118 : Trooper_55
- Track 119 : Gratitude_54, Updawg_55, Equemioh13_55, WideWale_55, MiculUcigas_54, Centaur_55, Terrific_57, Baehexic_53
- Track 120 : Whabigail7_55
- Track 121 : RedRock_56, AnnaL29_56
- Track 122 : Tristan_52
- Track 123 : Miko_51

- Track 124 : Rachaly_53, BobSwaget_50
- Track 125 : Sknot_56
- Track 126 : LionsBait_56
- Track 127 : QueenB2_53, Heffalump_53
- Track 128 : Journey13_48
- Track 129 : EZMoney23_52
- Track 130 : Fameo_54
- Track 131 : Leogania_54, BiancaTri92_54
- Track 132 : Loser_56
- Track 133 : Quokka_52, Bradman_53, MajorMajor_53
- Track 134 : Iwokeuplikedis_57
- Track 135 : Deloris_55, 20ES_57, BengiVuitton_56
- Track 136 : Pukovnik_53
- Track 137 : Jaan_54
- Track 138 : C3_52, VC3_57, AN9_57, ANI8_57
- Track 139 : Colin_54
- Track 140 : TopsytheTRex_50, Serenity_54
- Track 141 : Odin_52
- Track 142 : Ph8s_55
- Track 143 : Trixie_52
- Track 144 : MissWhite_53
- Track 145 : ArcherNM_49, Changeling_53
- Track 146 : First_0056
- Track 147 : XianYue_53
- Track 148 : LadyBird_59
- Track 149 : JoshKayV_56
- Track 150 : Kalpine_52
- Track 151 : Jsquared_52
- Track 152 : NothingSpecial_52
- Track 153 : Turbido_55
- Track 154 : Tomathan_56
- Track 155 : Lökk_51
- Track 156 : WeiHuaDA_56
- Track 157 : Che12_55
- Track 158 : Kinmap_52
- Track 159 : Yecey3_55

Summary of Final Annotations (See graph section above for start numbers):

The start number called the most often in the published annotations is 13, it was called in 155 of the 348 non-draft genes in the pham.

Genes that call this "Most Annotated" start:

- AFIS_47, Abbyshoes_52, Abrogate_480, Acme_51, Adahisdi_49, Ajay_51, Alsfro_53, Alvin_49, Anglerfish_51, Arcanine_50, Arlo_47, Ashballer_51, Atkinbua_52, BPBiabs31_50, Barriga_50, BarrowTuph_50, Beatrix_49, Bethlehem_50, Bexan_48, Big3_49, BigMau_50, BigPaolini_49, Bigfoot_45, BluSpix_48, Blue_49, Bob3_47, Bones_50, Burton_49, Buttons_48, CactusRose_47, Carlyle_48, Chanagan_46, Ciao_49, ConceptII_51, Corvo_50, Cueyllyss_51, Dexes_50, Doom_49, DrFeelGood_47, DreamCatcher_53, Dreamboat_51,

Dulcie_50, Dussy_51, Dynamix_51, Edtherson_49, EnzoK_49, Espresso_49, Euphoria_47, Fajezeel_51, Fascinus_45, Fenn_52, Froghopper_47, Fushigi_48, GageAP_50, Gandalf20_52, Graduation_53, GrecoEtereo_50, Greg_51, Gwendoluna_53, Gyzzlar_45, Hami1_43, HarryOW_48, Hermia_50, HermioneGrange_49, Hope4ever_52, ILeeKay_53, Ichabod_52, IgnatiusPatJac_50, Inyanga_46, Iqorha_46, JC27_51, Jasper_51, Jerm2_50, Jorgensen_51, KBG_51, KSSJEB_49, Kenmech_53, Kugel_50, KyMonks1A_51, Levia_46, Licorice_52, LilBib_49, Lopton_50, MPlant7149_48, Magnar_49, Magnito_48, Makemake_49, Manatee_51, Marcell_47, Marchy_44, Marco3_52, Marge_49, Maroc7_47, Marsha_49, MaryBeth_49, McGuire_51, MetalQZJ_48, Michley_49, Mkhuseleli_48, Monet_52, Mryolo_47, Museum_50, Naira_52, Nhonho_50, Niza_52, Norz_50, Papez_52, Paphu_47, Paraselene_47, Pari_51, Parliament_49, PascalRango_50, PattyP_50, Payneful_49, Pelly_49, Pepe_46, Peterson_54, Petruccio_49, PherrisBueller_49, PhineBark_50, Phlippers_48, Pinto_49, Pippin_51, QTRLifeCrisis_49, Raid_50, Rajelicia_50, Rhynn_48, Rohr_50, Rubeus_49, Rufus_50, Ruotula_52, Rutherford_51, STLscum_52, Sagefire_52, Sandaddy_48, SarFire_47, Scowl_50, Seabiscuit_52, ShortQueendom_43, SkiPole_54, Slagathor_51, Smeagol_51, Snazzy_48, Solon_48, Sorpresa_48, SpikeBT_49, Squee_50, StewieG_48, StrongArm_49, Sumter_46, Switzer_51, Target_50, Tasp14_51, Teodoridan_48, TheloniousMonk_50, Thor_47, Topgun_49, Traft412_52, Treddle_50, Trip13t_49, Turj99_48, U2_49, Violet_47, Watermelon_50, Wheeler_50, Wilkins_49, Zeeculate_47, Zephyr_49, Zeuska_48,

Genes that have the "Most Annotated" start but do not call it:

- Bigchung_49, BillKnuckles_50, Lamina13_50, Ringer_50,

Genes that do not have the "Most Annotated" start:

- 20ES_57, 40AC_55, A6_45, AN3_57, AN9_57, ANI8_57, AbbyPaige_56, Acolyte_49, Adzzy_55, Aeneas_51, Agaliana_45, Agape74_56, Altman_52, Aneem_54, AnnaL29_56, Anon_56, Anselm_55, Applejack_44, ArcherNM_49, BK1_45, Bachome_55, BaconJack_52, Bactobuster_53, Baehexic_53, BeesKnees_51, BengiVuitton_56, Benvolio_51, BiancaTri92_54, Bircsak_48, BobSwaget_50, Bowtie_54, Bradman_53, Briton15_52, Bruns_48, Bud_53, Buggy_56, Bxb1_45, C3_52, CRB1_58, Caraxes_54, Centaur_55, Changeling_53, Chargerpower_52, Che12_55, ChipMunk_56, Colin_54, Crispicous1_47, Crucio_54, D29_53, D32_55, DBQu4n_56, DD5_48, Dalmatian_55, DarthPhader_50, Deloris_55, Dignity_56, Drake55_56, DudeLittle_53, Duplo_56, EZMoney23_52, EagleEye_56, Ebony_53, Echild_54, Equemioh13_55, Et2Brutus_52, EvilGenius_56, Eyeball_51, Fameo_54, Fibonacci_53, FiringLine_54, First_0056, Flare16_54, Flaverint_54, Forsytheast_49, Francis47_48, GMonster_46, Gail_58, Georgie2_55, Gilberta_54, Gompeii16_48, Gratitude_54, HanShotFirst_49, HarryHoudini_55, Heffalump_53, Homines_42, Hutc2_53, Insomnia_54, IronMan_54, Iwokeuplikedis_57, Jaan_54, Jabith_54, JackSparrow_50, Jeeves_58, Jerm_56, Joselito_54, JoshKayV_56, Journey13_48, Jsquared_52, JuliaChild_50, Kalpine_52, Kanely_51, Kerberos_56, Killigrew_49, KingCyrus_56, Kinmap_52, Koduck_55, Kykar_49, L5_53, LadyBird_59, Landor_54, Larenn_53, Leogania_54, Lesedi_46, Leviathan_56, LilTurb_55, LionsBait_56, Lockley_48, Loko_51, Loser_56, Luchador_58, Lucivia_54, Lucyedi_55, LunarLander_54, MaCh_54, Mabel_53, MajorMajor_53, Malec_54, McSinger_50, MiculUcigas_54, Miko_51, MissWhite_53, Molly_50, Moose_49, MrGordo_49, Mulciber_53, Mule_46, Munch_54, NEHalo_47, NaSiaTalie_54, Naji_56, Nedarya_55, Nerujay_52, NicoleTera_53, NothingSpecial_52, Odin_52, Ohno789_51, Oogway_48, Orange_53, PSullivan_49, PacerPaul_49, PainterBoy_55, Perseus_49, Petersenfast_52, Petp2012_50,

Ph8s_55, Phaded_55, Pharaoh_49, PhrostyMug_48, PinkPlastic_49, Piro94_54, Pita2_52, Pomar16_56, Power_53, ProMouse_50, Pukovnik_53, QueenB2_53, QueenBeesly_54, Quokka_52, Rachaly_53, RedRock_56, Refuge_52, Retro23_55, RidgeCB_49, Salz_52, Sanya_47, Seanderson_51, SemperFi_55, Serenity_54, Sham4_53, Sibs6_50, Sknot_56, Smairt_51, Smeagan_57, SnapTap_54, Snape_53, SororFago_56, StarStuff_56, Steamy_50, Sunhee_57, Sunshine924_50, Superchunk_52, SweetiePie_54, SwirlSquare_59, SwissCheese_51, Swole_50, TarsusIV_53, Terrific_57, Timothy_53, TinyTimmy_53, TopsytheTRex_50, Tomathan_56, Tote_45, Travvers_56, Tristan_52, Trixie_52, Trooper_55, Trouble_52, Turbido_55, TwoPeat_50, Updawg_55, VA6_55, VC3_57, WeiHuaDA_56, Whabigail7_55, WideWale_55, XianYue_53, Yecey3_55, Zimmer_51,

Summary by start number:

Start 12:

- Found in 8 of 391 (2.0%) of genes in pham
- Manual Annotations of this start: 1 of 348
- Called 12.5% of time when present
- Phage (with cluster) where this start called: DD5_48 (A1),

Start 13:

- Found in 173 of 391 (44.2%) of genes in pham
- Manual Annotations of this start: 155 of 348
- Called 97.7% of time when present
- Phage (with cluster) where this start called: AFIS_47 (A1), Abbyshoes_52 (A1), Abrogate_480 (A1), Acme_51 (A1), Adahisdi_49 (A1), Ajay_51 (A1), Alsfro_53 (A1), Alvin_49 (A1), Anglerfish_51 (A1), Arcanine_50 (A1), Arlo_47 (A1), Ashballer_51 (A1), Atkinbua_52 (A1), BPBiebs31_50 (A1), Barriga_50 (A1), BarrowTuph_50 (A1), Beatrix_49 (A1), Bethlehem_50 (A1), Bexan_48 (A1), Big3_49 (A1), BigMau_50 (A1), BigPaolini_49 (A1), Bigfoot_45 (A1), BluSpix_48 (A1), Blue_49 (A1), Bob3_47 (A1), Bones_50 (A1), Burton_49 (A1), Buttons_48 (A1), CactusRose_47 (A1), Carlyle_48 (A1), Chanagan_46 (A1), Ciao_49 (A1), Conceptil_51 (A1), Corvo_50 (A1), Cueyllyss_51 (A1), Dexes_50 (A1), Doom_49 (A1), DrFeelGood_47 (A1), DreamCatcher_53 (A1), Dreamboat_51 (A1), Dulcie_50 (A1), Dussy_51 (A1), Dynamix_51 (A1), Edtherson_49 (A1), EnzoK_49 (A1), Espresso_49 (A1), Euphoria_47 (A1), Fajezeel_51 (A1), Fascinus_45 (A1), Fenn_52 (A1), Froghopper_47 (A1), Fushigi_48 (A1), GageAP_50 (A1), Gandalf20_52 (A1), Graduation_53 (A1), GrecoEtereo_50 (A1), Greg_51 (A1), Gwendoluna_53 (A1), Gyzlar_45 (A1), Hami1_43 (A1), HarryOW_48 (A1), Hermia_50 (A1), HermioneGrange_49 (A1), Hope4ever_52 (A1), ILeeKay_53 (A1), Ichabod_52 (A1), IgnatiusPatJac_50 (A1), Inyanga_46 (A1), Iqorha_46 (A1), JC27_51 (A1), Jasper_51 (A1), Jerm2_50 (A1), Jorgensen_51 (A1), KBG_51 (A1), KSSJEB_49 (A1), Kenmech_53 (A1), Kugel_50 (A1), KyMonks1A_51 (A1), Levia_46 (A1), Licorice_52 (A1), LilBib_49 (A1), Lopton_50 (A1), MPlant7149_48 (A1), Magnar_49 (A1), Magnito_48 (A1), Makemake_49 (A1), Manatee_51 (A1), Marcell_47 (A1), Marchy_44 (A1), Marco3_52 (A1), Marge_49 (A1), Maroc7_47 (A1), Marsha_49 (A1), MaryBeth_49 (A1), McGuire_51 (A1), MetalQZJ_48 (A1), Michley_49 (A1), Mkhuseleli_48 (A1), Monet_52 (A1), Mryolo_47 (A1), Museum_50 (A1), Naira_52 (A1), Nhonho_50 (A1), Niza_52 (A1), Norz_50 (A1), Papez_52 (A1), Paphu_47 (A1), Paraselene_47 (A1), Pari_51 (A1), Parliament_49 (A1), PascalRango_50 (A1), PattyP_50 (A1), Payneful_49 (A1), Pelly_49 (A1), Pepe_46 (A1), Peterson_54 (A1), Petruccio_49 (A1), PherrisBueller_49 (A1), PhineBark_50 (A1), Phlippers_48 (A1), Pinto_49 (A1), Pippin_51 (A1), QTRlifeCrisis_49 (A1), Raid_50 (A1), Rajelicia_50

(A1), Rhynn_48 (A1), Rohr_50 (A1), Rubeus_49 (A1), Rufus_50 (A1), Ruotula_52 (A1), Rutherford_51 (A1), STLscum_52 (A1), Sagefire_52 (A1), Sandaddy_48 (A1), SarFire_47 (A1), Scowl_50 (A1), Seabiscuit_52 (A1), ShortQueendom_43 (A1), SkiPole_54 (A1), Slagathor_51 (A1), Smeagol_51 (A1), Snazzy_48 (A1), Solon_48 (A1), Sorpresa_48 (A1), SpikeBT_49 (A1), Squee_50 (A1), StewieG_48 (A1), StrongArm_49 (A1), Sumter_46 (A1), Switzer_51 (A1), Target_50 (A1), Tasp14_51 (A1), Teodoridan_48 (A1), TheloniousMonk_50 (A1), Thor_47 (A1), Topgun_49 (A1), Traft412_52 (A1), Treddle_50 (A1), Tripl3t_49 (A1), Turj99_48 (A1), U2_49 (A1), Violet_47 (A1), Watermelon_50 (A1), Wheeler_50 (A1), Wilkins_49 (A1), Zeeculate_47 (A1), Zephyr_49 (A1), Zeuska_48 (A1),

Start 14:

- Found in 57 of 391 (14.6%) of genes in pham
- Manual Annotations of this start: 50 of 348
- Called 98.2% of time when present
- Phage (with cluster) where this start called: A6_45 (A1), Aeneas_51 (A1), Agaliana_45 (A1), Altman_52 (A1), Applejack_44 (A1), BK1_45 (A1), BaconJack_52 (A1), BeesKnees_51 (A1), Bircsak_48 (A1), Briton15_52 (A1), Bruns_48 (A1), Bxb1_45 (A1), Crispicous1_47 (A1), Eyeball_51 (A1), Forsytheast_49 (A1), Francis47_48 (A1), GMonster_46 (A1), Gompeii16_48 (A1), HanShotFirst_49 (A1), Homines_42 (A1), JackSparrow_50 (A1), JuliaChild_50 (A1), Kanely_51 (A1), Killigrew_49 (A1), Kykar_49 (A1), Lesedi_46 (A1), Lockley_48 (A1), LunarLander_54 (A1), McSinger_50 (A1), Molly_50 (A1), Moose_49 (A1), MrGordo_49 (A1), Mule_46 (A1), NEHalo_47 (A1), Nerujay_52 (A1), Ohno789_51 (A1), Oogway_48 (A1), PSullivan_49 (A1), PacerPaul_49 (A1), Perseus_49 (A1), Petp2012_50 (A1), PhrostyMug_48 (A1), PinkPlastic_49 (A1), Pita2_52 (A1), ProMouse_50 (A1), RidgeCB_49 (A1), Sanya_47 (A1), Seanderson_51 (A1), Sibs6_50 (A1), Smairt_51 (A1), Sunshine924_50 (A1), SwissCheese_51 (A1), Swole_50 (A1), Tote_45 (A1), Trouble_52 (A1), TwoPeat_50 (A1),

Start 15:

- Found in 125 of 391 (32.0%) of genes in pham
- Manual Annotations of this start: 104 of 348
- Called 96.0% of time when present
- Phage (with cluster) where this start called: 20ES_57 (A2), 40AC_55 (A17), AN3_57 (A2), AN9_57 (A2), ANI8_57 (A2), AbbyPaige_56 (A2), Acolyte_49 (A2), Adzzy_55 (A2), Agape74_56 (A2), Aneem_54 (A11), AnnaL29_56 (A2), Anselm_55 (A2), ArcherNM_49 (A2), Bachome_55 (A11), Baehexic_53 (A2), BengiVuitton_56 (A2), Benvolio_51 (A2), Bowtie_54 (A11), Bradman_53 (A2), Bud_53 (A11), Buggy_56 (A2), C3_52 (A2), CRB1_58 (A2), Caraxes_54 (A2), Centaur_55 (A2), Changeling_53 (A2), Che12_55 (A2), Crucio_54 (A2), D29_53 (A2), D32_55 (A2), DBQu4n_56 (A2), Dalmatian_55 (A2), Deloris_55 (A2), Dignity_56 (A2), Drake55_56 (A2), DudeLittle_53 (A2), Duplo_56 (A2), Ebony_53 (A11), Echild_54 (A2), Equemioh13_55 (A2), Et2Brutus_52 (A11), Fameo_54 (A2), Fibonacci_53 (A11), FiringLine_54 (A2), First_0056 (A2), Flare16_54 (A2), Flaverint_54 (A11), Georgie2_55 (A2), Gilberta_54 (A11), Gratitude_54 (A2), HarryHoudini_55 (A2), Heffalump_53 (A2), Hutc2_53 (A11), Insomnia_54 (A11), Iwokeuplikedis_57 (A2), Jaan_54 (A2), Jabith_54 (A11), Jerm_56 (A2), Joselito_54 (A11), Journey13_48 (A2), Jsquared_52 (A2), Kerberos_56 (A2), Kinmap_52 (A21), Koduck_55 (A2), L5_53 (A2), LadyBird_59 (A2), Larenn_53 (A2), Leviathan_56 (A2), LilTurb_55 (A2), Loser_56 (A2), Lucivia_54 (A11), MaCh_54 (A11), Mabel_53 (A11), MajorMajor_53 (A2), Malec_54 (A2), MiculUcigas_54 (A2), Mulciber_53 (A11), Munch_54 (A11), NaSiaTalie_54 (A2), Naji_56 (A2), Nedarya_55 (A15), NicoleTera_53 (A2), Odin_52 (A2), Orange_53 (A11), Petersenfast_52 (A11),

Ph8s_55 (A2), Piro94_54 (A2), Pomar16_56 (A2), Power_53 (A2), QueenB2_53 (A2), QueenBeesly_54 (A2), Quokka_52 (A2), RedRock_56 (A2), Retro23_55 (A2), Salz_52 (A11), SemperFi_55 (A2), Serenity_54 (A2), Sham4_53 (A11), Sknot_56 (A2), Smeagan_57 (A2), SnapTap_54 (A2), Snape_53 (A11), StarStuff_56 (A2), Superchunk_52 (A2), SweetiePie_54 (A2), SwirlSquare_59 (A2), Terrific_57 (A2), Timothy_53 (A11), TinyTimmy_53 (A11), TipsytheTRex_50 (A2), Tomathan_56 (A2), Travvers_56 (A2), Trooper_55 (A2), Turbido_55 (A2), Updawg_55 (A2), VA6_55 (A2), VC3_57 (A2), Whabigail7_55 (A2), WideWale_55 (A2), XianYue_53 (A2),

Start 16:

- Found in 107 of 391 (27.4%) of genes in pham
- Manual Annotations of this start: 35 of 348
- Called 38.3% of time when present
- Phage (with cluster) where this start called: Bactobuster_53 (A2), BiancaTri92_54 (A2), BillKnuckles_50 (A1), BobSwaget_50 (A2), Chargerpower_52 (A), ChipMunk_56 (A2), Colin_54 (A2), DarthPhader_50 (A12), EZMoney23_52 (A2), EagleEye_56 (A16), EvilGenius_56 (A2), Gail_58 (A14), IronMan_54 (A2), Jeeves_58 (A14), JoshKayV_56 (A2), Kalpine_52 (A2), KingCyrus_56 (A2), Lamina13_50 (A1), Landor_54 (A2), Leogania_54 (A2), LionsBait_56 (A2), Lokk_51 (A2), Luchador_58 (A14), Lucyedi_55 (A16), Miko_51 (A2), NothingSpecial_52 (A2), PainterBoy_55 (A16), Phaded_55 (A2), Pharaoh_49 (A12), Pukovnik_53 (A2), Rachaly_53 (A2), Refuge_52 (A12), SororFago_56 (A14), Steamy_50 (A12), Sunhee_57 (A14), TarsusIV_53 (A2), Tristan_52 (A2), Trixie_52 (A2), WeiHuaDA_56 (A2), Yecy3_55 (A9), Zimmer_51 (A12),

Start 17:

- Found in 3 of 391 (0.8%) of genes in pham
- Manual Annotations of this start: 1 of 348
- Called 33.3% of time when present
- Phage (with cluster) where this start called: MissWhite_53 (A2),

Start 21:

- Found in 3 of 391 (0.8%) of genes in pham
- Manual Annotations of this start: 1 of 348
- Called 33.3% of time when present
- Phage (with cluster) where this start called: Anon_56 (A15),

Start 23:

- Found in 152 of 391 (38.9%) of genes in pham
- Manual Annotations of this start: 1 of 348
- Called 1.3% of time when present
- Phage (with cluster) where this start called: Bigchung_49 (A1), Ringer_50 (A1),

Summary by clusters:

There are 11 clusters represented in this pham: A, A14, A17, A16, A11, A12, A15, A21, A1, A2, A9,

Info for manual annotations of cluster A:

- Start number 16 was manually annotated 1 time for cluster A.

Info for manual annotations of cluster A1:

- Start number 12 was manually annotated 1 time for cluster A1.

- Start number 13 was manually annotated 155 times for cluster A1.
- Start number 14 was manually annotated 50 times for cluster A1.
- Start number 16 was manually annotated 2 times for cluster A1.
- Start number 23 was manually annotated 1 time for cluster A1.

Info for manual annotations of cluster A11:

- Start number 15 was manually annotated 24 times for cluster A11.

Info for manual annotations of cluster A12:

- Start number 16 was manually annotated 5 times for cluster A12.

Info for manual annotations of cluster A14:

- Start number 16 was manually annotated 4 times for cluster A14.

Info for manual annotations of cluster A15:

- Start number 15 was manually annotated 1 time for cluster A15.
- Start number 21 was manually annotated 1 time for cluster A15.

Info for manual annotations of cluster A16:

- Start number 16 was manually annotated 3 times for cluster A16.

Info for manual annotations of cluster A2:

- Start number 15 was manually annotated 79 times for cluster A2.
- Start number 16 was manually annotated 19 times for cluster A2.
- Start number 17 was manually annotated 1 time for cluster A2.

Info for manual annotations of cluster A9:

- Start number 16 was manually annotated 1 time for cluster A9.

Gene Information:

Gene: 20ES_57 Start: 37404, Stop: 36643, Start Num: 15

Candidate Starts for 20ES_57:

(10, 37569), (Start: 15 @37404 has 104 MA's), (Start: 23 @37350 has 1 MA's), (31, 37269), (64, 37083), (65, 37077), (105, 36771), (121, 36690), (125, 36651),

Gene: 40AC_55 Start: 38040, Stop: 37369, Start Num: 15

Candidate Starts for 40AC_55:

(Start: 15 @38040 has 104 MA's), (34, 37908), (49, 37851), (93, 37515), (98, 37449),

Gene: A6_45 Start: 35301, Stop: 34516, Start Num: 14

Candidate Starts for A6_45:

(Start: 14 @35301 has 50 MA's), (29, 35199), (33, 35166), (35, 35163), (45, 35121), (59, 35007), (61, 34998), (62, 34992), (68, 34965), (73, 34911), (92, 34788), (95, 34734), (109, 34641), (117, 34602), (120, 34587),

Gene: AFIS_47 Start: 36105, Stop: 35314, Start Num: 13

Candidate Starts for AFIS_47:

(Start: 13 @36105 has 155 MA's), (Start: 16 @36090 has 35 MA's), (Start: 23 @36051 has 1 MA's), (32, 35970), (59, 35805), (61, 35796), (62, 35790), (68, 35763), (73, 35709), (76, 35682), (79, 35679), (92, 35586), (95, 35532), (109, 35439), (117, 35400), (120, 35385),

Gene: AN3_57 Start: 36089, Stop: 35328, Start Num: 15

Candidate Starts for AN3_57:

(10, 36254), (Start: 15 @36089 has 104 MA's), (Start: 23 @36035 has 1 MA's), (31, 35954), (64, 35768), (65, 35762), (80, 35672), (105, 35456), (121, 35375), (125, 35336),

Gene: AN9_57 Start: 37029, Stop: 36343, Start Num: 15

Candidate Starts for AN9_57:

(Start: 15 @37029 has 104 MA's), (34, 36897), (45, 36855), (48, 36846), (49, 36840), (55, 36774), (64, 36717), (65, 36711), (93, 36504),

Gene: ANI8_57 Start: 37029, Stop: 36343, Start Num: 15

Candidate Starts for ANI8_57:

(Start: 15 @37029 has 104 MA's), (34, 36897), (45, 36855), (48, 36846), (49, 36840), (55, 36774), (64, 36717), (65, 36711), (93, 36504),

Gene: AbbyPaige_56 Start: 37263, Stop: 36577, Start Num: 15

Candidate Starts for AbbyPaige_56:

(Start: 15 @37263 has 104 MA's), (42, 37092), (45, 37080), (47, 37074), (64, 36942), (74, 36873),

Gene: Abbysshoes_52 Start: 36747, Stop: 35956, Start Num: 13

Candidate Starts for Abbysshoes_52:

(Start: 13 @36747 has 155 MA's), (Start: 16 @36732 has 35 MA's), (Start: 23 @36693 has 1 MA's), (32, 36612), (59, 36447), (61, 36438), (62, 36432), (68, 36405), (73, 36351), (83, 36297), (92, 36228), (109, 36081), (117, 36042), (120, 36027),

Gene: Abrogate_480 Start: 36762, Stop: 35971, Start Num: 13

Candidate Starts for Abrogate_480:

(Start: 13 @36762 has 155 MA's), (Start: 23 @36708 has 1 MA's), (32, 36627), (59, 36462), (61, 36453), (62, 36447), (68, 36420), (73, 36366), (83, 36312), (92, 36243), (95, 36189), (109, 36096), (117, 36057), (120, 36042),

Gene: Acme_51 Start: 36648, Stop: 35833, Start Num: 13

Candidate Starts for Acme_51:

(Start: 13 @36648 has 155 MA's), (Start: 16 @36633 has 35 MA's), (Start: 23 @36594 has 1 MA's), (32, 36513), (59, 36348), (61, 36339), (62, 36333), (70, 36255), (80, 36195), (85, 36153), (88, 36141), (92, 36105), (109, 35958), (117, 35919), (120, 35904),

Gene: Acolyte_49 Start: 36109, Stop: 35363, Start Num: 15

Candidate Starts for Acolyte_49:

(Start: 15 @36109 has 104 MA's), (41, 35944), (47, 35923), (64, 35791), (65, 35785), (93, 35563), (96, 35506), (105, 35467),

Gene: Adahisdi_49 Start: 36498, Stop: 35707, Start Num: 13

Candidate Starts for Adahisdi_49:

(Start: 13 @36498 has 155 MA's), (Start: 23 @36444 has 1 MA's), (32, 36363), (59, 36198), (61, 36189), (62, 36183), (73, 36102), (76, 36075), (79, 36072), (92, 35979), (95, 35925), (109, 35832), (120, 35778),

Gene: Adzzy_55 Start: 35570, Stop: 34869, Start Num: 15

Candidate Starts for Adzzy_55:

(3, 35903), (Start: 15 @35570 has 104 MA's), (41, 35408), (43, 35399), (63, 35261), (65, 35249), (74, 35180), (82, 35138), (83, 35129), (94, 35009), (97, 34967),

Gene: Aeneas_51 Start: 36709, Stop: 35924, Start Num: 14

Candidate Starts for Aeneas_51:

(Start: 14 @36709 has 50 MA's), (29, 36607), (33, 36574), (35, 36571), (45, 36529), (59, 36415), (61, 36406), (62, 36400), (68, 36373), (73, 36319), (76, 36292), (79, 36289), (92, 36196), (95, 36142), (109, 36049), (117, 36010), (120, 35995),

Gene: Agaliana_45 Start: 33356, Stop: 32571, Start Num: 14

Candidate Starts for Agaliana_45:

(Start: 14 @33356 has 50 MA's), (29, 33254), (33, 33221), (35, 33218), (45, 33176), (59, 33062), (61, 33053), (62, 33047), (68, 33020), (73, 32966), (83, 32912), (92, 32843), (95, 32789), (109, 32696), (117, 32657), (120, 32642),

Gene: Agape74_56 Start: 37257, Stop: 36571, Start Num: 15

Candidate Starts for Agape74_56:

(Start: 15 @37257 has 104 MA's), (22, 37206), (42, 37086), (45, 37074), (47, 37068), (64, 36936), (74, 36867), (98, 36651),

Gene: Ajay_51 Start: 36816, Stop: 36025, Start Num: 13

Candidate Starts for Ajay_51:

(Start: 13 @36816 has 155 MA's), (Start: 16 @36801 has 35 MA's), (Start: 23 @36762 has 1 MA's), (32, 36681), (59, 36516), (61, 36507), (62, 36501), (68, 36474), (73, 36420), (83, 36366), (92, 36297), (109, 36150), (117, 36111), (120, 36096),

Gene: Alsfro_53 Start: 36822, Stop: 36031, Start Num: 13

Candidate Starts for Alsfro_53:

(Start: 13 @36822 has 155 MA's), (Start: 23 @36768 has 1 MA's), (32, 36687), (59, 36522), (61, 36513), (62, 36507), (68, 36480), (73, 36426), (83, 36372), (92, 36303), (95, 36249), (109, 36156), (117, 36117), (120, 36102),

Gene: Altman_52 Start: 37414, Stop: 36629, Start Num: 14

Candidate Starts for Altman_52:

(Start: 14 @37414 has 50 MA's), (27, 37327), (29, 37312), (33, 37279), (35, 37276), (45, 37234), (59, 37120), (61, 37111), (62, 37105), (68, 37078), (73, 37024), (83, 36970), (92, 36901), (95, 36847), (109, 36754), (117, 36715), (120, 36700),

Gene: Alvin_49 Start: 37098, Stop: 36283, Start Num: 13

Candidate Starts for Alvin_49:

(Start: 13 @37098 has 155 MA's), (Start: 16 @37083 has 35 MA's), (Start: 23 @37044 has 1 MA's), (32, 36963), (59, 36798), (61, 36789), (62, 36783), (70, 36705), (80, 36645), (88, 36591), (92, 36555), (109, 36408), (117, 36369), (120, 36354),

Gene: Aneem_54 Start: 36203, Stop: 35511, Start Num: 15

Candidate Starts for Aneem_54:

(Start: 15 @36203 has 104 MA's), (18, 36194), (27, 36125), (39, 36053), (78, 35792), (93, 35666),

Gene: Anglerfish_51 Start: 36970, Stop: 36179, Start Num: 13

Candidate Starts for Anglerfish_51:

(Start: 13 @36970 has 155 MA's), (28, 36868), (29, 36862), (51, 36754), (61, 36661), (62, 36655), (85, 36499), (88, 36487), (92, 36451), (109, 36304), (117, 36265), (120, 36250),

Gene: AnnaL29_56 Start: 37812, Stop: 37132, Start Num: 15

Candidate Starts for AnnaL29_56:

(Start: 15 @37812 has 104 MA's), (18, 37794), (43, 37638), (55, 37551), (58, 37530), (65, 37488), (71, 37440), (79, 37389), (93, 37278),

Gene: Anon_56 Start: 35373, Stop: 34744, Start Num: 21

Candidate Starts for Anon_56:

(Start: 17 @35400 has 1 MA's), (Start: 21 @35373 has 1 MA's), (49, 35217), (58, 35130), (61, 35109), (80, 35001), (83, 34980), (86, 34956), (96, 34836), (115, 34755),

Gene: Anselm_55 Start: 37167, Stop: 36496, Start Num: 15

Candidate Starts for Anselm_55:

(10, 37329), (Start: 15 @37167 has 104 MA's), (34, 37035), (49, 36978), (53, 36957), (65, 36849), (79, 36750), (89, 36687), (93, 36639),

Gene: Applejack_44 Start: 32978, Stop: 32193, Start Num: 14

Candidate Starts for Applejack_44:

(Start: 14 @32978 has 50 MA's), (29, 32876), (33, 32843), (35, 32840), (45, 32798), (59, 32684), (61, 32675), (62, 32669), (68, 32642), (73, 32588), (76, 32561), (79, 32558), (92, 32465), (95, 32411), (109, 32318), (117, 32279), (120, 32264),

Gene: Arcanine_50 Start: 36294, Stop: 35503, Start Num: 13

Candidate Starts for Arcanine_50:

(Start: 13 @36294 has 155 MA's), (28, 36192), (29, 36186), (51, 36078), (61, 35985), (62, 35979), (73, 35898), (76, 35871), (79, 35868), (85, 35823), (88, 35811), (92, 35775), (109, 35628), (117, 35589), (120, 35574),

Gene: ArcherNM_49 Start: 36822, Stop: 36085, Start Num: 15

Candidate Starts for ArcherNM_49:

(Start: 15 @36822 has 104 MA's), (Start: 21 @36786 has 1 MA's), (24, 36756), (26, 36741), (31, 36699), (41, 36660), (65, 36501), (91, 36318), (92, 36315), (96, 36228), (104, 36192), (105, 36189), (123, 36093),

Gene: Arlo_47 Start: 35951, Stop: 35160, Start Num: 13

Candidate Starts for Arlo_47:

(Start: 13 @35951 has 155 MA's), (28, 35849), (29, 35843), (51, 35735), (61, 35642), (62, 35636), (85, 35480), (88, 35468), (92, 35432), (109, 35285), (117, 35246), (120, 35231),

Gene: Ashballer_51 Start: 37447, Stop: 36656, Start Num: 13

Candidate Starts for Ashballer_51:

(Start: 13 @37447 has 155 MA's), (Start: 16 @37432 has 35 MA's), (Start: 23 @37393 has 1 MA's), (32, 37312), (59, 37147), (61, 37138), (62, 37132), (68, 37105), (73, 37051), (83, 36997), (92, 36928), (95, 36874), (109, 36781), (117, 36742),

Gene: Atkinbua_52 Start: 37074, Stop: 36283, Start Num: 13

Candidate Starts for Atkinbua_52:

(Start: 13 @37074 has 155 MA's), (Start: 23 @37020 has 1 MA's), (25, 36993), (32, 36939), (59, 36774), (61, 36765), (62, 36759), (68, 36732), (73, 36678), (83, 36624), (92, 36555), (95, 36501), (109, 36408), (117, 36369), (120, 36354),

Gene: BK1_45 Start: 35301, Stop: 34516, Start Num: 14

Candidate Starts for BK1_45:

(Start: 14 @35301 has 50 MA's), (29, 35199), (33, 35166), (35, 35163), (45, 35121), (59, 35007), (61, 34998), (62, 34992), (68, 34965), (73, 34911), (92, 34788), (95, 34734), (109, 34641), (117, 34602), (120, 34587),

Gene: BPBiebs31_50 Start: 36666, Stop: 35875, Start Num: 13

Candidate Starts for BPBiebs31_50:

(Start: 13 @36666 has 155 MA's), (28, 36564), (29, 36558), (37, 36513), (51, 36450), (61, 36357), (80, 36237), (85, 36195), (88, 36183), (92, 36147), (109, 36000), (117, 35961),

Gene: Bachome_55 Start: 36183, Stop: 35491, Start Num: 15

Candidate Starts for Bachome_55:

(Start: 15 @36183 has 104 MA's), (18, 36174), (27, 36105), (39, 36033), (78, 35772), (93, 35646),

Gene: BaconJack_52 Start: 37368, Stop: 36583, Start Num: 14

Candidate Starts for BaconJack_52:

(Start: 14 @37368 has 50 MA's), (29, 37266), (33, 37233), (35, 37230), (45, 37188), (59, 37074), (61, 37065), (62, 37059), (68, 37032), (73, 36978), (92, 36855), (95, 36801), (109, 36708), (117, 36669), (120, 36654),

Gene: Bactobuster_53 Start: 37762, Stop: 37037, Start Num: 16

Candidate Starts for Bactobuster_53:

(6, 37996), (Start: 16 @37762 has 35 MA's), (27, 37684), (34, 37633), (42, 37603), (45, 37591), (50, 37573), (64, 37453), (65, 37447), (74, 37378), (79, 37348), (85, 37303), (90, 37267), (93, 37237), (96, 37180), (113, 37129),

Gene: Baehexic_53 Start: 36934, Stop: 36239, Start Num: 15

Candidate Starts for Baehexic_53:

(7, 37141), (Start: 15 @36934 has 104 MA's), (41, 36772), (54, 36712), (65, 36613), (74, 36544), (78, 36517), (82, 36499), (93, 36397),

Gene: Barriga_50 Start: 36212, Stop: 35421, Start Num: 13

Candidate Starts for Barriga_50:

(Start: 13 @36212 has 155 MA's), (Start: 23 @36158 has 1 MA's), (32, 36077), (59, 35912), (61, 35903), (62, 35897), (68, 35870), (73, 35816), (83, 35762), (92, 35693), (95, 35639), (109, 35546), (117, 35507), (120, 35492),

Gene: BarrowTuph_50 Start: 36937, Stop: 36146, Start Num: 13

Candidate Starts for BarrowTuph_50:

(Start: 13 @36937 has 155 MA's), (Start: 16 @36922 has 35 MA's), (Start: 23 @36883 has 1 MA's), (32, 36802), (59, 36637), (61, 36628), (62, 36622), (68, 36595), (73, 36541), (83, 36487), (92, 36418), (95, 36364), (109, 36271), (117, 36232), (120, 36217),

Gene: Beatrix_49 Start: 37922, Stop: 37131, Start Num: 13

Candidate Starts for Beatrix_49:

(Start: 13 @37922 has 155 MA's), (Start: 23 @37868 has 1 MA's), (32, 37787), (59, 37622), (61, 37613), (62, 37607), (68, 37580), (73, 37526), (83, 37472), (92, 37403), (95, 37349), (117, 37217), (120, 37202),

Gene: BeesKnees_51 Start: 36776, Stop: 35991, Start Num: 14

Candidate Starts for BeesKnees_51:

(Start: 12 @36782 has 1 MA's), (Start: 14 @36776 has 50 MA's), (29, 36674), (33, 36641), (35, 36638), (45, 36596), (59, 36482), (61, 36473), (62, 36467), (73, 36386), (76, 36359), (79, 36356), (92, 36263), (95, 36209), (109, 36116), (117, 36077), (120, 36062),

Gene: BengiVuitton_56 Start: 37372, Stop: 36611, Start Num: 15

Candidate Starts for BengiVuitton_56:

(10, 37537), (Start: 15 @37372 has 104 MA's), (Start: 23 @37318 has 1 MA's), (31, 37237), (64, 37051), (65, 37045), (105, 36739), (121, 36658), (125, 36619),

Gene: Benvolio_51 Start: 36188, Stop: 35505, Start Num: 15

Candidate Starts for Benvolio_51:

(10, 36353), (Start: 15 @36188 has 104 MA's), (34, 36056), (49, 35999), (65, 35870), (89, 35711), (93, 35663),

Gene: Bethlehem_50 Start: 37439, Stop: 36648, Start Num: 13

Candidate Starts for Bethlehem_50:

(Start: 13 @37439 has 155 MA's), (Start: 23 @37385 has 1 MA's), (32, 37304), (59, 37139), (61, 37130), (62, 37124), (68, 37097), (73, 37043), (83, 36989), (92, 36920), (109, 36773), (117, 36734), (120, 36719),

Gene: Bexan_48 Start: 37600, Stop: 36809, Start Num: 13

Candidate Starts for Bexan_48:

(Start: 13 @37600 has 155 MA's), (Start: 23 @37546 has 1 MA's), (32, 37465), (59, 37300), (61, 37291), (62, 37285), (68, 37258), (73, 37204), (83, 37150), (92, 37081), (95, 37027), (117, 36895), (120, 36880),

Gene: BiancaTri92_54 Start: 37571, Stop: 36897, Start Num: 16

Candidate Starts for BiancaTri92_54:

(10, 37739), (Start: 16 @37571 has 35 MA's), (22, 37535), (54, 37355), (58, 37298), (65, 37256), (67, 37247), (74, 37187), (79, 37157), (83, 37133), (89, 37094), (93, 37046),

Gene: Big3_49 Start: 36839, Stop: 36048, Start Num: 13

Candidate Starts for Big3_49:

(Start: 13 @36839 has 155 MA's), (Start: 16 @36824 has 35 MA's), (Start: 23 @36785 has 1 MA's), (32, 36704), (59, 36539), (61, 36530), (62, 36524), (68, 36497), (73, 36443), (83, 36389), (92, 36320), (109, 36173), (117, 36134), (120, 36119),

Gene: BigMau_50 Start: 36205, Stop: 35390, Start Num: 13

Candidate Starts for BigMau_50:

(Start: 13 @36205 has 155 MA's), (Start: 23 @36151 has 1 MA's), (32, 36070), (59, 35905), (61, 35896), (62, 35890), (70, 35812), (80, 35752), (85, 35710), (88, 35698), (92, 35662), (95, 35608), (109, 35515), (117, 35476), (120, 35461),

Gene: BigPaolini_49 Start: 35364, Stop: 34573, Start Num: 13

Candidate Starts for BigPaolini_49:

(Start: 13 @35364 has 155 MA's), (Start: 16 @35349 has 35 MA's), (Start: 23 @35310 has 1 MA's), (32, 35229), (59, 35064), (61, 35055), (62, 35049), (68, 35022), (73, 34968), (83, 34914), (92, 34845), (117, 34659), (120, 34644),

Gene: Bigchungj_49 Start: 35981, Stop: 35244, Start Num: 23

Candidate Starts for Bigchungj_49:

(Start: 13 @36035 has 155 MA's), (Start: 23 @35981 has 1 MA's), (32, 35900), (59, 35735), (61, 35726), (62, 35720), (68, 35693), (73, 35639), (83, 35585), (92, 35516), (95, 35462), (109, 35369), (117, 35330), (120, 35315),

Gene: Bigfoot_45 Start: 35585, Stop: 34794, Start Num: 13

Candidate Starts for Bigfoot_45:

(Start: 13 @35585 has 155 MA's), (Start: 16 @35570 has 35 MA's), (Start: 23 @35531 has 1 MA's), (32, 35450), (59, 35285), (61, 35276), (62, 35270), (68, 35243), (73, 35189), (83, 35135), (92, 35066), (109, 34919), (117, 34880), (120, 34865),

Gene: BillKnuckles_50 Start: 37476, Stop: 36700, Start Num: 16

Candidate Starts for BillKnuckles_50:

(Start: 13 @37491 has 155 MA's), (Start: 16 @37476 has 35 MA's), (Start: 23 @37437 has 1 MA's), (32, 37356), (59, 37191), (61, 37182), (62, 37176), (68, 37149), (73, 37095), (83, 37041), (92, 36972), (95, 36918), (109, 36825), (117, 36786), (120, 36771),

Gene: Bircsak_48 Start: 36932, Stop: 36147, Start Num: 14

Candidate Starts for Bircsak_48:

(Start: 14 @36932 has 50 MA's), (29, 36830), (33, 36797), (35, 36794), (45, 36752), (59, 36638), (61, 36629), (62, 36623), (68, 36596), (73, 36542), (83, 36488), (92, 36419), (95, 36365), (109, 36272), (117, 36233), (120, 36218),

Gene: BluSpix_48 Start: 33150, Stop: 32359, Start Num: 13

Candidate Starts for BluSpix_48:

(Start: 13 @33150 has 155 MA's), (Start: 23 @33096 has 1 MA's), (32, 33015), (59, 32850), (61, 32841), (62, 32835), (73, 32754), (83, 32700), (92, 32631), (109, 32484), (117, 32445), (120, 32430),

Gene: Blue_49 Start: 36851, Stop: 36060, Start Num: 13

Candidate Starts for Blue_49:

(Start: 13 @36851 has 155 MA's), (Start: 23 @36797 has 1 MA's), (32, 36716), (59, 36551), (61, 36542), (62, 36536), (68, 36509), (73, 36455), (83, 36401), (92, 36332), (95, 36278), (109, 36185), (117, 36146), (120, 36131),

Gene: Bob3_47 Start: 35555, Stop: 34740, Start Num: 13

Candidate Starts for Bob3_47:

(Start: 13 @35555 has 155 MA's), (Start: 23 @35501 has 1 MA's), (32, 35420), (59, 35255), (61, 35246), (62, 35240), (70, 35162), (80, 35102), (85, 35060), (88, 35048), (92, 35012), (95, 34958), (109, 34865), (117, 34826), (120, 34811),

Gene: BobSwaget_50 Start: 35667, Stop: 34924, Start Num: 16

Candidate Starts for BobSwaget_50:

(Start: 15 @35670 has 104 MA's), (Start: 16 @35667 has 35 MA's), (25, 35601), (51, 35466), (55, 35415), (61, 35373), (72, 35295), (93, 35148), (96, 35091), (113, 35040), (119, 35010), (124, 34971), (126, 34932),

Gene: Bones_50 Start: 37251, Stop: 36436, Start Num: 13

Candidate Starts for Bones_50:

(Start: 13 @37251 has 155 MA's), (Start: 23 @37197 has 1 MA's), (32, 37116), (59, 36951), (61, 36942), (62, 36936), (70, 36858), (80, 36798), (85, 36756), (88, 36744), (92, 36708), (95, 36654), (109, 36561), (117, 36522), (120, 36507),

Gene: Bowtie_54 Start: 36210, Stop: 35518, Start Num: 15

Candidate Starts for Bowtie_54:

(Start: 15 @36210 has 104 MA's), (18, 36201), (27, 36132), (39, 36060), (78, 35799), (93, 35673),

Gene: Bradman_53 Start: 35786, Stop: 35082, Start Num: 15

Candidate Starts for Bradman_53:

(3, 36119), (10, 35951), (Start: 15 @35786 has 104 MA's), (37, 35639), (65, 35462), (80, 35363), (89, 35303), (98, 35177), (112, 35114),

Gene: Briton15_52 Start: 37002, Stop: 36217, Start Num: 14

Candidate Starts for Briton15_52:

(Start: 12 @37008 has 1 MA's), (Start: 14 @37002 has 50 MA's), (27, 36915), (29, 36900), (33, 36867), (35, 36864), (45, 36822), (59, 36708), (61, 36699), (62, 36693), (68, 36666), (73, 36612), (83, 36558), (92, 36489), (95, 36435), (109, 36342), (117, 36303), (120, 36288),

Gene: Bruns_48 Start: 36137, Stop: 35352, Start Num: 14

Candidate Starts for Bruns_48:

(Start: 14 @36137 has 50 MA's), (27, 36050), (29, 36035), (33, 36002), (35, 35999), (45, 35957), (59, 35843), (61, 35834), (62, 35828), (68, 35801), (73, 35747), (83, 35693), (92, 35624), (95, 35570), (109, 35477), (117, 35438), (120, 35423),

Gene: Bud_53 Start: 35757, Stop: 35065, Start Num: 15

Candidate Starts for Bud_53:

(Start: 15 @35757 has 104 MA's), (18, 35748), (27, 35679), (39, 35607), (78, 35346), (93, 35220),

Gene: Buggy_56 Start: 37314, Stop: 36628, Start Num: 15

Candidate Starts for Buggy_56:

(1, 37815), (10, 37476), (Start: 15 @37314 has 104 MA's), (22, 37263), (42, 37143), (45, 37131), (47, 37125), (64, 36993), (74, 36924),

Gene: Burton_49 Start: 36103, Stop: 35288, Start Num: 13

Candidate Starts for Burton_49:

(Start: 13 @36103 has 155 MA's), (Start: 23 @36049 has 1 MA's), (32, 35968), (61, 35794), (62, 35788), (70, 35710), (80, 35650), (85, 35608), (88, 35596), (92, 35560), (109, 35413), (117, 35374), (120, 35359),

Gene: Buttons_48 Start: 35073, Stop: 34282, Start Num: 13

Candidate Starts for Buttons_48:

(Start: 13 @35073 has 155 MA's), (Start: 16 @35058 has 35 MA's), (Start: 23 @35019 has 1 MA's), (32, 34938), (59, 34773), (61, 34764), (62, 34758), (68, 34731), (73, 34677), (83, 34623), (92, 34554), (109, 34407), (117, 34368), (120, 34353),

Gene: Bxb1_45 Start: 35882, Stop: 35097, Start Num: 14

Candidate Starts for Bxb1_45:

(Start: 14 @35882 has 50 MA's), (29, 35780), (33, 35747), (35, 35744), (45, 35702), (59, 35588), (61, 35579), (62, 35573), (68, 35546), (73, 35492), (83, 35438), (92, 35369), (95, 35315), (109, 35222), (117, 35183), (120, 35168),

Gene: C3_52 Start: 37029, Stop: 36343, Start Num: 15

Candidate Starts for C3_52:

(Start: 15 @37029 has 104 MA's), (34, 36897), (45, 36855), (48, 36846), (49, 36840), (55, 36774), (64, 36717), (65, 36711), (93, 36504),

Gene: CRB1_58 Start: 37747, Stop: 36983, Start Num: 15

Candidate Starts for CRB1_58:

(Start: 15 @37747 has 104 MA's), (Start: 23 @37693 has 1 MA's), (31, 37612), (64, 37426), (65, 37420), (87, 37279), (105, 37114), (121, 37033), (125, 36994),

Gene: CactusRose_47 Start: 36080, Stop: 35289, Start Num: 13

Candidate Starts for CactusRose_47:

(Start: 13 @36080 has 155 MA's), (Start: 23 @36026 has 1 MA's), (32, 35945), (59, 35780), (61, 35771), (62, 35765), (68, 35738), (73, 35684), (83, 35630), (92, 35561), (109, 35414), (117, 35375), (120, 35360),

Gene: Caraxes_54 Start: 35279, Stop: 34578, Start Num: 15

Candidate Starts for Caraxes_54:

(3, 35612), (Start: 15 @35279 has 104 MA's), (18, 35261), (22, 35234), (24, 35213), (41, 35117), (43, 35108), (57, 35006), (65, 34958), (80, 34859), (97, 34676),

Gene: Carlyle_48 Start: 34577, Stop: 33786, Start Num: 13

Candidate Starts for Carlyle_48:

(Start: 13 @34577 has 155 MA's), (Start: 23 @34523 has 1 MA's), (32, 34442), (59, 34277), (61, 34268), (62, 34262), (68, 34235), (73, 34181), (83, 34127), (92, 34058), (95, 34004), (109, 33911), (117, 33872),

Gene: Centaur_55 Start: 37151, Stop: 36456, Start Num: 15

Candidate Starts for Centaur_55:

(7, 37358), (Start: 15 @37151 has 104 MA's), (41, 36989), (54, 36929), (65, 36830), (74, 36761), (78, 36734), (82, 36716), (93, 36614),

Gene: Chanagan_46 Start: 35380, Stop: 34589, Start Num: 13

Candidate Starts for Chanagan_46:

(Start: 13 @35380 has 155 MA's), (Start: 16 @35365 has 35 MA's), (Start: 23 @35326 has 1 MA's), (32, 35245), (59, 35080), (61, 35071), (62, 35065), (73, 34984), (83, 34930), (92, 34861), (95, 34807), (117, 34675), (120, 34660),

Gene: Changeling_53 Start: 37417, Stop: 36680, Start Num: 15

Candidate Starts for Changeling_53:

(Start: 15 @37417 has 104 MA's), (Start: 21 @37381 has 1 MA's), (24, 37351), (26, 37336), (31, 37294), (41, 37255), (65, 37096), (91, 36913), (92, 36910), (96, 36823), (104, 36787), (105, 36784), (123, 36688),

Gene: Chargerpower_52 Start: 35532, Stop: 34852, Start Num: 16

Candidate Starts for Chargerpower_52:

(Start: 16 @35532 has 35 MA's), (30, 35430), (43, 35367), (49, 35346), (67, 35208), (77, 35121), (90, 35037), (93, 35007), (112, 34881),

Gene: Che12_55 Start: 35711, Stop: 35010, Start Num: 15

Candidate Starts for Che12_55:

(Start: 15 @35711 has 104 MA's), (22, 35666), (41, 35549), (43, 35540), (50, 35516), (57, 35438), (63, 35402), (65, 35390), (74, 35321), (82, 35279), (83, 35270), (94, 35150), (97, 35108),

Gene: ChipMunk_56 Start: 38514, Stop: 37846, Start Num: 16

Candidate Starts for ChipMunk_56:

(1, 39018), (Start: 16 @38514 has 35 MA's), (43, 38349), (48, 38334), (49, 38328), (54, 38298), (74, 38130), (78, 38103), (93, 37989),

Gene: Ciao_49 Start: 36531, Stop: 35740, Start Num: 13

Candidate Starts for Ciao_49:

(Start: 13 @36531 has 155 MA's), (Start: 16 @36516 has 35 MA's), (Start: 23 @36477 has 1 MA's), (32, 36396), (59, 36231), (61, 36222), (62, 36216), (73, 36135), (83, 36081), (92, 36012), (109, 35865), (117, 35826), (120, 35811),

Gene: Colin_54 Start: 37138, Stop: 36467, Start Num: 16

Candidate Starts for Colin_54:

(Start: 16 @37138 has 35 MA's), (54, 36922), (56, 36874), (79, 36724), (83, 36700), (90, 36643), (93, 36613), (102, 36529),

Gene: Conceptll_51 Start: 37247, Stop: 36432, Start Num: 13

Candidate Starts for Conceptll_51:

(Start: 13 @37247 has 155 MA's), (Start: 16 @37232 has 35 MA's), (Start: 23 @37193 has 1 MA's), (32, 37112), (59, 36947), (61, 36938), (62, 36932), (70, 36854), (80, 36794), (85, 36752), (88, 36740), (92, 36704), (109, 36557), (117, 36518), (120, 36503),

Gene: Corvo_50 Start: 37083, Stop: 36292, Start Num: 13

Candidate Starts for Corvo_50:

(Start: 13 @37083 has 155 MA's), (Start: 23 @37029 has 1 MA's), (32, 36948), (59, 36783), (61, 36774), (62, 36768), (68, 36741), (73, 36687), (83, 36633), (92, 36564), (95, 36510), (117, 36378), (120, 36363),

Gene: Crispicous1_47 Start: 35700, Stop: 34915, Start Num: 14

Candidate Starts for Crispicous1_47:

(Start: 14 @35700 has 50 MA's), (27, 35613), (29, 35598), (33, 35565), (35, 35562), (45, 35520), (59, 35406), (61, 35397), (62, 35391), (68, 35364), (73, 35310), (83, 35256), (92, 35187), (95, 35133), (109, 35040), (117, 35001), (120, 34986),

Gene: Crucio_54 Start: 36763, Stop: 36071, Start Num: 15

Candidate Starts for Crucio_54:

(1, 37264), (Start: 15 @36763 has 104 MA's), (22, 36715), (41, 36598), (74, 36370), (79, 36340), (82, 36325), (83, 36316), (94, 36196),

Gene: Cueyllyss_51 Start: 38384, Stop: 37569, Start Num: 13

Candidate Starts for Cueyllyss_51:

(Start: 13 @38384 has 155 MA's), (Start: 23 @38330 has 1 MA's), (32, 38249), (59, 38084), (61, 38075), (62, 38069), (70, 37991), (80, 37931), (85, 37889), (88, 37877), (92, 37841), (95, 37787), (109, 37694), (117, 37655), (120, 37640),

Gene: D29_53 Start: 36632, Stop: 35925, Start Num: 15

Candidate Starts for D29_53:

(Start: 15 @36632 has 104 MA's), (19, 36605), (22, 36584), (41, 36467), (65, 36308), (79, 36209), (82, 36194), (94, 36065), (98, 36020),

Gene: D32_55 Start: 36632, Stop: 35925, Start Num: 15

Candidate Starts for D32_55:

(Start: 15 @36632 has 104 MA's), (19, 36605), (22, 36584), (41, 36467), (65, 36308), (79, 36209), (82, 36194), (94, 36065), (98, 36020),

Gene: DBQu4n_56 Start: 36613, Stop: 35906, Start Num: 15

Candidate Starts for DBQu4n_56:

(Start: 15 @36613 has 104 MA's), (19, 36586), (22, 36565), (41, 36448), (65, 36289), (79, 36190), (82, 36175), (94, 36046), (98, 36001),

Gene: DD5_48 Start: 37089, Stop: 36298, Start Num: 12

Candidate Starts for DD5_48:

(Start: 12 @37089 has 1 MA's), (Start: 14 @37083 has 50 MA's), (29, 36981), (33, 36948), (35, 36945), (45, 36903), (59, 36789), (61, 36780), (62, 36774), (73, 36693), (76, 36666), (79, 36663), (92, 36570), (95, 36516), (109, 36423), (117, 36384), (120, 36369),

Gene: Dalmatian_55 Start: 37140, Stop: 36469, Start Num: 15

Candidate Starts for Dalmatian_55:

(10, 37302), (Start: 15 @37140 has 104 MA's), (34, 37008), (49, 36951), (53, 36930), (65, 36822), (79, 36723), (89, 36660), (93, 36612),

Gene: DarthPhader_50 Start: 37443, Stop: 36769, Start Num: 16

Candidate Starts for DarthPhader_50:

(1, 37953), (3, 37785), (Start: 16 @37443 has 35 MA's), (44, 37272), (54, 37227), (63, 37140), (65, 37128), (73, 37059), (77, 37029), (93, 36915), (102, 36831), (112, 36789),

Gene: Deloris_55 Start: 37041, Stop: 36280, Start Num: 15

Candidate Starts for Deloris_55:

(10, 37206), (Start: 15 @37041 has 104 MA's), (Start: 23 @36987 has 1 MA's), (31, 36906), (64, 36720), (65, 36714), (105, 36408), (121, 36327), (125, 36288),

Gene: Dexes_50 Start: 37436, Stop: 36645, Start Num: 13

Candidate Starts for Dexes_50:

(Start: 13 @37436 has 155 MA's), (Start: 16 @37421 has 35 MA's), (Start: 23 @37382 has 1 MA's), (32, 37301), (59, 37136), (61, 37127), (62, 37121), (73, 37040), (76, 37013), (79, 37010), (92, 36917), (95, 36863), (117, 36731), (120, 36716),

Gene: Dignity_56 Start: 37337, Stop: 36651, Start Num: 15

Candidate Starts for Dignity_56:

(1, 37838), (10, 37499), (Start: 15 @37337 has 104 MA's), (42, 37166), (45, 37154), (47, 37148), (64, 37016), (74, 36947),

Gene: Doom_49 Start: 36867, Stop: 36076, Start Num: 13

Candidate Starts for Doom_49:

(Start: 13 @36867 has 155 MA's), (Start: 23 @36813 has 1 MA's), (32, 36732), (59, 36567), (61, 36558), (62, 36552), (68, 36525), (73, 36471), (83, 36417), (92, 36348), (117, 36162), (120, 36147),

Gene: DrFeelGood_47 Start: 36551, Stop: 35760, Start Num: 13

Candidate Starts for DrFeelGood_47:

(Start: 13 @36551 has 155 MA's), (Start: 23 @36497 has 1 MA's), (32, 36416), (59, 36251), (61, 36242), (62, 36236), (73, 36155), (83, 36101), (92, 36032), (109, 35885), (117, 35846), (120, 35831),

Gene: Drake55_56 Start: 37230, Stop: 36535, Start Num: 15

Candidate Starts for Drake55_56:

(6, 37461), (7, 37437), (Start: 15 @37230 has 104 MA's), (41, 37068), (54, 37008), (65, 36909), (74, 36840), (78, 36813), (82, 36795), (93, 36693),

Gene: DreamCatcher_53 Start: 37957, Stop: 37166, Start Num: 13

Candidate Starts for DreamCatcher_53:

(Start: 13 @37957 has 155 MA's), (28, 37855), (29, 37849), (51, 37741), (61, 37648), (80, 37528), (85, 37486), (88, 37474), (92, 37438), (95, 37384), (109, 37291), (117, 37252), (120, 37237),

Gene: Dreamboat_51 Start: 36307, Stop: 35516, Start Num: 13

Candidate Starts for Dreamboat_51:

(Start: 13 @36307 has 155 MA's), (Start: 23 @36253 has 1 MA's), (32, 36172), (59, 36007), (61, 35998), (62, 35992), (68, 35965), (73, 35911), (83, 35857), (92, 35788), (109, 35641), (117, 35602), (120, 35587),

Gene: DudeLittle_53 Start: 36906, Stop: 36235, Start Num: 15

Candidate Starts for DudeLittle_53:

(10, 37068), (Start: 15 @36906 has 104 MA's), (34, 36774), (49, 36717), (53, 36696), (65, 36588), (79, 36489), (89, 36426), (93, 36378),

Gene: Dulcie_50 Start: 36755, Stop: 35964, Start Num: 13

Candidate Starts for Dulcie_50:

(Start: 13 @36755 has 155 MA's), (Start: 16 @36740 has 35 MA's), (Start: 23 @36701 has 1 MA's), (32, 36620), (59, 36455), (61, 36446), (62, 36440), (68, 36413), (73, 36359), (83, 36305), (92, 36236), (95, 36182), (117, 36050),

Gene: Duplo_56 Start: 36669, Stop: 35962, Start Num: 15

Candidate Starts for Duplo_56:

(Start: 15 @36669 has 104 MA's), (19, 36642), (22, 36621), (41, 36504), (65, 36345), (79, 36246), (82, 36231), (94, 36102), (98, 36057),

Gene: Dussy_51 Start: 36767, Stop: 35976, Start Num: 13

Candidate Starts for Dussy_51:

(Start: 13 @36767 has 155 MA's), (Start: 16 @36752 has 35 MA's), (Start: 23 @36713 has 1 MA's), (32, 36632), (59, 36467), (61, 36458), (62, 36452), (68, 36425), (73, 36371), (83, 36317), (92, 36248), (109, 36101), (117, 36062), (120, 36047),

Gene: Dynamix_51 Start: 36777, Stop: 35962, Start Num: 13

Candidate Starts for Dynamix_51:

(Start: 13 @36777 has 155 MA's), (Start: 23 @36723 has 1 MA's), (32, 36642), (59, 36477), (61, 36468), (62, 36462), (70, 36384), (80, 36324), (85, 36282), (88, 36270), (92, 36234), (95, 36180), (117, 36048), (120, 36033),

Gene: EZMoney23_52 Start: 36664, Stop: 35993, Start Num: 16

Candidate Starts for EZMoney23_52:

(Start: 16 @36664 has 35 MA's), (43, 36499), (49, 36478), (51, 36463), (65, 36349), (67, 36340), (78, 36253), (93, 36139), (102, 36055),

Gene: EagleEye_56 Start: 36467, Stop: 35742, Start Num: 16

Candidate Starts for EagleEye_56:

(3, 36842), (Start: 16 @36467 has 35 MA's), (22, 36431), (26, 36392), (36, 36332), (41, 36311), (45, 36296), (49, 36281), (51, 36266), (52, 36263), (56, 36203), (64, 36158), (65, 36152), (67, 36143), (81, 36050), (96, 35888), (100, 35873),

Gene: Ebony_53 Start: 35774, Stop: 35082, Start Num: 15

Candidate Starts for Ebony_53:

(Start: 15 @35774 has 104 MA's), (18, 35765), (27, 35696), (78, 35363), (93, 35237),

Gene: Echild_54 Start: 36212, Stop: 35529, Start Num: 15

Candidate Starts for Echild_54:

(10, 36377), (Start: 15 @36212 has 104 MA's), (34, 36080), (49, 36023), (65, 35894), (89, 35735), (93, 35687),

Gene: Edtherson_49 Start: 37031, Stop: 36240, Start Num: 13

Candidate Starts for Edtherson_49:

(Start: 13 @37031 has 155 MA's), (Start: 16 @37016 has 35 MA's), (32, 36896), (59, 36731), (61, 36722), (62, 36716), (73, 36635), (83, 36581), (92, 36512), (109, 36365), (117, 36326), (120, 36311),

Gene: EnzoK_49 Start: 34357, Stop: 33566, Start Num: 13

Candidate Starts for EnzoK_49:

(Start: 13 @34357 has 155 MA's), (Start: 16 @34342 has 35 MA's), (Start: 23 @34303 has 1 MA's), (32, 34222), (59, 34057), (61, 34048), (62, 34042), (68, 34015), (73, 33961), (83, 33907), (92, 33838), (95, 33784), (117, 33652), (120, 33637),

Gene: Equemioh13_55 Start: 37053, Stop: 36358, Start Num: 15

Candidate Starts for Equemioh13_55:

(7, 37260), (Start: 15 @37053 has 104 MA's), (41, 36891), (54, 36831), (65, 36732), (74, 36663), (78, 36636), (82, 36618), (93, 36516),

Gene: Espresso_49 Start: 36636, Stop: 35845, Start Num: 13

Candidate Starts for Espresso_49:

(Start: 13 @36636 has 155 MA's), (Start: 23 @36582 has 1 MA's), (32, 36501), (59, 36336), (61, 36327), (62, 36321), (68, 36294), (73, 36240), (83, 36186), (92, 36117), (95, 36063), (109, 35970), (117, 35931), (120, 35916),

Gene: Et2Brutus_52 Start: 35737, Stop: 35045, Start Num: 15

Candidate Starts for Et2Brutus_52:

(Start: 15 @35737 has 104 MA's), (18, 35728), (27, 35659), (39, 35587), (78, 35326), (93, 35200),

Gene: Euphoria_47 Start: 35887, Stop: 35096, Start Num: 13

Candidate Starts for Euphoria_47:

(Start: 13 @35887 has 155 MA's), (Start: 16 @35872 has 35 MA's), (Start: 23 @35833 has 1 MA's), (32, 35752), (59, 35587), (61, 35578), (62, 35572), (68, 35545), (73, 35491), (83, 35437), (92, 35368), (106, 35248), (109, 35221), (117, 35182),

Gene: EvilGenius_56 Start: 38515, Stop: 37847, Start Num: 16

Candidate Starts for EvilGenius_56:

(1, 39019), (Start: 16 @38515 has 35 MA's), (43, 38350), (48, 38335), (49, 38329), (54, 38299), (74, 38131), (78, 38104), (93, 37990),

Gene: Eyeball_51 Start: 37131, Stop: 36346, Start Num: 14

Candidate Starts for Eyeball_51:

(Start: 14 @37131 has 50 MA's), (29, 37029), (33, 36996), (35, 36993), (45, 36951), (59, 36837), (61, 36828), (62, 36822), (68, 36795), (73, 36741), (83, 36687), (92, 36618), (95, 36564), (109, 36471), (117, 36432), (120, 36417),

Gene: Fajezeel_51 Start: 36880, Stop: 36089, Start Num: 13

Candidate Starts for Fajezeel_51:

(Start: 13 @36880 has 155 MA's), (Start: 16 @36865 has 35 MA's), (Start: 23 @36826 has 1 MA's), (32, 36745), (59, 36580), (61, 36571), (62, 36565), (73, 36484), (83, 36430), (92, 36361), (109, 36214), (117, 36175), (120, 36160),

Gene: Fameo_54 Start: 37094, Stop: 36408, Start Num: 15

Candidate Starts for Fameo_54:

(10, 37256), (Start: 15 @37094 has 104 MA's), (20, 37055), (42, 36923), (45, 36911), (47, 36905), (64, 36773), (74, 36704), (94, 36533), (97, 36491), (98, 36488), (102, 36467),

Gene: Fascinus_45 Start: 35806, Stop: 34991, Start Num: 13

Candidate Starts for Fascinus_45:

(Start: 13 @35806 has 155 MA's), (Start: 16 @35791 has 35 MA's), (Start: 23 @35752 has 1 MA's), (32, 35671), (59, 35506), (61, 35497), (62, 35491), (70, 35413), (80, 35353), (85, 35311), (88, 35299), (92, 35263), (95, 35209), (109, 35116), (117, 35077), (120, 35062),

Gene: Fenn_52 Start: 38708, Stop: 37917, Start Num: 13

Candidate Starts for Fenn_52:

(Start: 13 @38708 has 155 MA's), (Start: 23 @38654 has 1 MA's), (32, 38573), (59, 38408), (61, 38399), (62, 38393), (68, 38366), (73, 38312), (83, 38258), (92, 38189), (109, 38042), (117, 38003), (120, 37988),

Gene: Fibonacci_53 Start: 35743, Stop: 35051, Start Num: 15

Candidate Starts for Fibonacci_53:

(Start: 15 @35743 has 104 MA's), (18, 35734), (27, 35665), (39, 35593), (78, 35332), (93, 35206),

Gene: FiringLine_54 Start: 36744, Stop: 36052, Start Num: 15

Candidate Starts for FiringLine_54:

(Start: 15 @36744 has 104 MA's), (22, 36696), (41, 36579), (74, 36351), (79, 36321), (82, 36306), (83, 36297), (94, 36177),

Gene: First_0056 Start: 37304, Stop: 36543, Start Num: 15

Candidate Starts for First_0056:

(10, 37469), (Start: 15 @37304 has 104 MA's), (Start: 23 @37250 has 1 MA's), (31, 37169), (64, 36983), (65, 36977), (67, 36968), (105, 36671), (121, 36590), (125, 36551),

Gene: Flare16_54 Start: 36812, Stop: 36117, Start Num: 15

Candidate Starts for Flare16_54:

(6, 37043), (7, 37019), (8, 37004), (Start: 15 @36812 has 104 MA's), (41, 36650), (54, 36590), (65, 36491), (74, 36422), (78, 36395), (82, 36377), (93, 36275), (102, 36191),

Gene: Flaverint_54 Start: 36201, Stop: 35509, Start Num: 15

Candidate Starts for Flaverint_54:

(Start: 15 @36201 has 104 MA's), (18, 36192), (27, 36123), (39, 36051), (78, 35790), (93, 35664),

Gene: Forsytheast_49 Start: 36355, Stop: 35570, Start Num: 14

Candidate Starts for Forsytheast_49:

(Start: 14 @36355 has 50 MA's), (27, 36268), (29, 36253), (33, 36220), (35, 36217), (45, 36175), (59, 36061), (61, 36052), (62, 36046), (68, 36019), (73, 35965), (83, 35911), (92, 35842), (95, 35788), (109, 35695), (117, 35656), (120, 35641),

Gene: Francis47_48 Start: 37200, Stop: 36415, Start Num: 14

Candidate Starts for Francis47_48:

(Start: 14 @37200 has 50 MA's), (29, 37098), (33, 37065), (35, 37062), (45, 37020), (59, 36906), (61, 36897), (62, 36891), (68, 36864), (73, 36810), (83, 36756), (92, 36687), (95, 36633), (109, 36540), (117, 36501), (120, 36486),

Gene: Froghopper_47 Start: 35876, Stop: 35085, Start Num: 13

Candidate Starts for Froghopper_47:

(Start: 13 @35876 has 155 MA's), (Start: 16 @35861 has 35 MA's), (Start: 23 @35822 has 1 MA's), (32, 35741), (59, 35576), (61, 35567), (62, 35561), (68, 35534), (73, 35480), (83, 35426), (92, 35357), (117, 35171), (120, 35156),

Gene: Fushigi_48 Start: 34837, Stop: 34046, Start Num: 13

Candidate Starts for Fushigi_48:

(Start: 13 @34837 has 155 MA's), (Start: 16 @34822 has 35 MA's), (Start: 23 @34783 has 1 MA's), (32, 34702), (59, 34537), (61, 34528), (62, 34522), (68, 34495), (73, 34441), (83, 34387), (92, 34318), (106, 34198), (109, 34171), (117, 34132), (120, 34117),

Gene: GMonster_46 Start: 35199, Stop: 34414, Start Num: 14

Candidate Starts for GMonster_46:

(Start: 14 @35199 has 50 MA's), (29, 35097), (33, 35064), (35, 35061), (45, 35019), (59, 34905), (61, 34896), (62, 34890), (68, 34863), (73, 34809), (76, 34782), (79, 34779), (92, 34686), (95, 34632), (109, 34539), (117, 34500), (120, 34485),

Gene: GageAP_50 Start: 36676, Stop: 35885, Start Num: 13

Candidate Starts for GageAP_50:

(Start: 13 @36676 has 155 MA's), (Start: 16 @36661 has 35 MA's), (Start: 23 @36622 has 1 MA's), (32, 36541), (59, 36376), (61, 36367), (62, 36361), (68, 36334), (73, 36280), (76, 36253), (79, 36250), (92, 36157), (95, 36103), (109, 36010), (117, 35971), (120, 35956),

Gene: Gail_58 Start: 37956, Stop: 37207, Start Num: 16

Candidate Starts for Gail_58:

(Start: 16 @37956 has 35 MA's), (27, 37878), (34, 37827), (41, 37800), (49, 37770), (51, 37755), (64, 37647), (65, 37641), (73, 37575), (74, 37572), (93, 37434), (96, 37377),

Gene: Gandalf20_52 Start: 37729, Stop: 36938, Start Num: 13

Candidate Starts for Gandalf20_52:

(Start: 13 @37729 has 155 MA's), (Start: 23 @37675 has 1 MA's), (32, 37594), (59, 37429), (61, 37420), (62, 37414), (68, 37387), (73, 37333), (83, 37279), (92, 37210), (95, 37156), (109, 37063), (117, 37024), (120, 37009),

Gene: Georgie2_55 Start: 36789, Stop: 36097, Start Num: 15

Candidate Starts for Georgie2_55:

(1, 37290), (Start: 15 @36789 has 104 MA's), (22, 36741), (41, 36624), (74, 36396), (79, 36366), (82, 36351), (83, 36342), (94, 36222),

Gene: Gilberta_54 Start: 36194, Stop: 35502, Start Num: 15

Candidate Starts for Gilberta_54:

(Start: 15 @36194 has 104 MA's), (18, 36185), (27, 36116), (39, 36044), (78, 35783), (93, 35657),

Gene: Gompeii16_48 Start: 36933, Stop: 36148, Start Num: 14

Candidate Starts for Gompeii16_48:

(Start: 14 @36933 has 50 MA's), (29, 36831), (33, 36798), (35, 36795), (45, 36753), (59, 36639), (61, 36630), (62, 36624), (68, 36597), (73, 36543), (83, 36489), (92, 36420), (95, 36366), (109, 36273), (117, 36234), (120, 36219),

Gene: Graduation_53 Start: 38456, Stop: 37665, Start Num: 13

Candidate Starts for Graduation_53:

(Start: 13 @38456 has 155 MA's), (Start: 23 @38402 has 1 MA's), (32, 38321), (59, 38156), (61, 38147), (62, 38141), (68, 38114), (73, 38060), (83, 38006), (92, 37937), (95, 37883), (109, 37790), (117, 37751), (120, 37736),

Gene: Gratitude_54 Start: 37053, Stop: 36358, Start Num: 15

Candidate Starts for Gratitude_54:

(7, 37260), (Start: 15 @37053 has 104 MA's), (41, 36891), (54, 36831), (65, 36732), (74, 36663), (78, 36636), (82, 36618), (93, 36516),

Gene: GrecoEtereo_50 Start: 36688, Stop: 35897, Start Num: 13

Candidate Starts for GrecoEtereo_50:

(Start: 13 @36688 has 155 MA's), (28, 36586), (29, 36580), (51, 36472), (61, 36379), (62, 36373), (73, 36292), (76, 36265), (79, 36262), (85, 36217), (88, 36205), (92, 36169), (109, 36022), (117, 35983), (120, 35968),

Gene: Greg_51 Start: 36880, Stop: 36089, Start Num: 13

Candidate Starts for Greg_51:

(Start: 13 @36880 has 155 MA's), (Start: 16 @36865 has 35 MA's), (Start: 23 @36826 has 1 MA's), (32, 36745), (59, 36580), (61, 36571), (62, 36565), (73, 36484), (83, 36430), (92, 36361), (109, 36214), (117, 36175), (120, 36160),

Gene: Gwendoluna_53 Start: 38892, Stop: 38101, Start Num: 13

Candidate Starts for Gwendoluna_53:

(Start: 13 @38892 has 155 MA's), (Start: 23 @38838 has 1 MA's), (32, 38757), (51, 38676), (59, 38592), (61, 38583), (62, 38577), (68, 38550), (73, 38496), (83, 38442), (92, 38373), (109, 38226), (117, 38187), (120, 38172),

Gene: Gyzlar_45 Start: 34602, Stop: 33811, Start Num: 13

Candidate Starts for Gyzlar_45:

(Start: 13 @34602 has 155 MA's), (Start: 16 @34587 has 35 MA's), (Start: 23 @34548 has 1 MA's), (32, 34467), (59, 34302), (61, 34293), (62, 34287), (68, 34260), (73, 34206), (83, 34152), (92, 34083), (109, 33936), (117, 33897), (120, 33882),

Gene: Hami1_43 Start: 30983, Stop: 30192, Start Num: 13

Candidate Starts for Hami1_43:

(Start: 13 @30983 has 155 MA's), (Start: 23 @30929 has 1 MA's), (32, 30848), (59, 30683), (61, 30674), (62, 30668), (68, 30641), (73, 30587), (83, 30533), (92, 30464), (95, 30410), (109, 30317), (117, 30278), (120, 30263),

Gene: HanShotFirst_49 Start: 36074, Stop: 35289, Start Num: 14

Candidate Starts for HanShotFirst_49:

(Start: 12 @36080 has 1 MA's), (Start: 14 @36074 has 50 MA's), (27, 35987), (29, 35972), (33, 35939), (35, 35936), (45, 35894), (59, 35780), (61, 35771), (62, 35765), (68, 35738), (73, 35684), (83, 35630), (92, 35561), (95, 35507), (109, 35414), (117, 35375), (120, 35360),

Gene: HarryHoudini_55 Start: 37239, Stop: 36544, Start Num: 15

Candidate Starts for HarryHoudini_55:

(6, 37470), (7, 37446), (Start: 15 @37239 has 104 MA's), (41, 37077), (54, 37017), (65, 36918), (74, 36849), (78, 36822), (82, 36804), (93, 36702),

Gene: HarryOW_48 Start: 35860, Stop: 35069, Start Num: 13

Candidate Starts for HarryOW_48:

(Start: 13 @35860 has 155 MA's), (28, 35758), (29, 35752), (51, 35644), (61, 35551), (62, 35545), (73, 35464), (76, 35437), (79, 35434), (85, 35389), (88, 35377), (92, 35341), (109, 35194), (117, 35155), (120, 35140),

Gene: Heffalump_53 Start: 37562, Stop: 36876, Start Num: 15

Candidate Starts for Heffalump_53:

(10, 37724), (Start: 15 @37562 has 104 MA's), (20, 37523), (42, 37391), (45, 37379), (47, 37373), (64, 37241), (74, 37172), (94, 37001), (97, 36959), (98, 36956),

Gene: Hermia_50 Start: 37307, Stop: 36516, Start Num: 13

Candidate Starts for Hermia_50:

(Start: 13 @37307 has 155 MA's), (28, 37205), (29, 37199), (51, 37091), (61, 36998), (62, 36992), (73, 36911), (76, 36884), (79, 36881), (85, 36836), (88, 36824), (92, 36788), (109, 36641), (117, 36602), (120, 36587),

Gene: HermioneGrange_49 Start: 36699, Stop: 35884, Start Num: 13

Candidate Starts for HermioneGrange_49:

(Start: 13 @36699 has 155 MA's), (Start: 23 @36645 has 1 MA's), (32, 36564), (59, 36399), (61, 36390), (62, 36384), (70, 36306), (80, 36246), (85, 36204), (88, 36192), (92, 36156), (95, 36102), (109, 36009), (117, 35970), (120, 35955),

Gene: Homines_42 Start: 32873, Stop: 32088, Start Num: 14

Candidate Starts for Homines_42:

(Start: 14 @32873 has 50 MA's), (29, 32771), (33, 32738), (35, 32735), (45, 32693), (59, 32579), (61, 32570), (62, 32564), (68, 32537), (73, 32483), (83, 32429), (92, 32360), (95, 32306), (109, 32213), (117, 32174), (120, 32159),

Gene: Hope4ever_52 Start: 37516, Stop: 36701, Start Num: 13

Candidate Starts for Hope4ever_52:

(Start: 13 @37516 has 155 MA's), (Start: 23 @37462 has 1 MA's), (32, 37381), (59, 37216), (61, 37207), (62, 37201), (70, 37123), (80, 37063), (85, 37021), (88, 37009), (92, 36973), (95, 36919), (109, 36826), (117, 36787),

Gene: Hutc2_53 Start: 35743, Stop: 35051, Start Num: 15

Candidate Starts for Hutc2_53:

(Start: 15 @35743 has 104 MA's), (18, 35734), (27, 35665), (39, 35593), (78, 35332), (93, 35206),

Gene: ILeeKay_53 Start: 37469, Stop: 36678, Start Num: 13

Candidate Starts for ILeeKay_53:

(Start: 13 @37469 has 155 MA's), (28, 37367), (29, 37361), (51, 37253), (61, 37160), (62, 37154), (85, 36998), (88, 36986), (92, 36950), (109, 36803), (117, 36764), (120, 36749),

Gene: Ichabod_52 Start: 37098, Stop: 36307, Start Num: 13

Candidate Starts for Ichabod_52:

(Start: 13 @37098 has 155 MA's), (28, 36996), (29, 36990), (37, 36945), (51, 36882), (61, 36789), (80, 36669), (85, 36627), (88, 36615), (92, 36579), (109, 36432), (117, 36393), (120, 36378),

Gene: IgnatiusPatJac_50 Start: 37095, Stop: 36304, Start Num: 13

Candidate Starts for IgnatiusPatJac_50:

(Start: 13 @37095 has 155 MA's), (Start: 23 @37041 has 1 MA's), (32, 36960), (59, 36795), (61, 36786), (62, 36780), (73, 36699), (83, 36645), (92, 36576), (109, 36429), (117, 36390), (120, 36375),

Gene: Insomnia_54 Start: 36254, Stop: 35562, Start Num: 15

Candidate Starts for Insomnia_54:

(Start: 15 @36254 has 104 MA's), (18, 36245), (27, 36176), (39, 36104), (78, 35843), (93, 35717),

Gene: Inyanga_46 Start: 35329, Stop: 34538, Start Num: 13

Candidate Starts for Inyanga_46:

(Start: 13 @35329 has 155 MA's), (Start: 16 @35314 has 35 MA's), (Start: 23 @35275 has 1 MA's), (32, 35194), (59, 35029), (61, 35020), (62, 35014), (73, 34933), (92, 34810), (109, 34663), (117, 34624), (120, 34609),

Gene: Iqorha_46 Start: 35328, Stop: 34537, Start Num: 13

Candidate Starts for Iqorha_46:

(Start: 13 @35328 has 155 MA's), (Start: 16 @35313 has 35 MA's), (Start: 23 @35274 has 1 MA's), (32, 35193), (59, 35028), (61, 35019), (62, 35013), (73, 34932), (92, 34809), (109, 34662), (117, 34623), (120, 34608),

Gene: IronMan_54 Start: 37945, Stop: 37220, Start Num: 16

Candidate Starts for IronMan_54:

(6, 38179), (Start: 16 @37945 has 35 MA's), (22, 37909), (27, 37867), (34, 37816), (42, 37786), (45, 37774), (49, 37759), (63, 37642), (65, 37630), (90, 37450), (93, 37420), (96, 37363), (113, 37312),

Gene: Iwokeuplikedis_57 Start: 36868, Stop: 36170, Start Num: 15

Candidate Starts for Iwokeuplikedis_57:

(10, 37033), (Start: 15 @36868 has 104 MA's), (54, 36637), (58, 36580), (65, 36538), (74, 36469), (78, 36442), (93, 36328),

Gene: JC27_51 Start: 37136, Stop: 36345, Start Num: 13

Candidate Starts for JC27_51:

(Start: 13 @37136 has 155 MA's), (Start: 16 @37121 has 35 MA's), (Start: 23 @37082 has 1 MA's), (32, 37001), (59, 36836), (61, 36827), (62, 36821), (68, 36794), (73, 36740), (83, 36686), (92, 36617), (95, 36563), (109, 36470), (117, 36431),

Gene: Jaan_54 Start: 38114, Stop: 37392, Start Num: 15

Candidate Starts for Jaan_54:

(6, 38345), (Start: 15 @38114 has 104 MA's), (34, 37985), (54, 37898), (65, 37799), (67, 37790), (74, 37730), (75, 37724), (79, 37703), (93, 37592), (96, 37535), (113, 37484),

Gene: Jabith_54 Start: 36255, Stop: 35563, Start Num: 15

Candidate Starts for Jabith_54:

(Start: 15 @36255 has 104 MA's), (18, 36246), (27, 36177), (39, 36105), (78, 35844), (93, 35718),

Gene: JackSparrow_50 Start: 36905, Stop: 36120, Start Num: 14

Candidate Starts for JackSparrow_50:

(Start: 12 @36911 has 1 MA's), (Start: 14 @36905 has 50 MA's), (29, 36803), (33, 36770), (35, 36767), (45, 36725), (59, 36611), (61, 36602), (62, 36596), (68, 36569), (73, 36515), (76, 36488), (79, 36485), (92, 36392), (95, 36338), (109, 36245), (117, 36206), (120, 36191),

Gene: Jasper_51 Start: 36193, Stop: 35402, Start Num: 13

Candidate Starts for Jasper_51:

(Start: 13 @36193 has 155 MA's), (Start: 23 @36139 has 1 MA's), (32, 36058), (59, 35893), (61, 35884), (62, 35878), (68, 35851), (73, 35797), (83, 35743), (92, 35674), (109, 35527), (117, 35488), (120, 35473),

Gene: Jeeves_58 Start: 36728, Stop: 35979, Start Num: 16

Candidate Starts for Jeeves_58:

(Start: 16 @36728 has 35 MA's), (43, 36563), (49, 36542), (58, 36455), (64, 36419), (65, 36413), (73, 36347), (78, 36317), (93, 36203), (96, 36146), (108, 36095), (109, 36089),

Gene: Jerm_56 Start: 37329, Stop: 36643, Start Num: 15

Candidate Starts for Jerm_56:

(Start: 15 @37329 has 104 MA's), (22, 37278), (42, 37158), (45, 37146), (47, 37140), (64, 37008), (74, 36939), (98, 36723),

Gene: Jerm2_50 Start: 36954, Stop: 36139, Start Num: 13

Candidate Starts for Jerm2_50:

(Start: 13 @36954 has 155 MA's), (Start: 23 @36900 has 1 MA's), (32, 36819), (59, 36654), (61, 36645), (62, 36639), (70, 36561), (80, 36501), (85, 36459), (88, 36447), (92, 36411), (95, 36357), (109, 36264), (117, 36225), (120, 36210),

Gene: Jorgensen_51 Start: 36836, Stop: 36045, Start Num: 13

Candidate Starts for Jorgensen_51:

(Start: 13 @36836 has 155 MA's), (Start: 23 @36782 has 1 MA's), (32, 36701), (59, 36536), (61, 36527), (62, 36521), (68, 36494), (73, 36440), (83, 36386), (92, 36317), (95, 36263), (117, 36131), (120, 36116),

Gene: Joselito_54 Start: 36203, Stop: 35511, Start Num: 15

Candidate Starts for Joselito_54:

(Start: 15 @36203 has 104 MA's), (18, 36194), (27, 36125), (39, 36053), (78, 35792), (93, 35666),

Gene: JoshKayV_56 Start: 37405, Stop: 36737, Start Num: 16

Candidate Starts for JoshKayV_56:

(1, 37909), (Start: 16 @37405 has 35 MA's), (43, 37240), (48, 37225), (49, 37219), (54, 37189), (93, 36880),

Gene: Journey13_48 Start: 35135, Stop: 34443, Start Num: 15

Candidate Starts for Journey13_48:

(5, 35369), (Start: 15 @35135 has 104 MA's), (Start: 23 @35087 has 1 MA's), (29, 35036), (41, 34973), (46, 34958), (58, 34856), (65, 34814), (74, 34745), (75, 34739), (93, 34604),

Gene: Jsquared_52 Start: 35755, Stop: 35051, Start Num: 15

Candidate Starts for Jsquared_52:

(3, 36088), (10, 35920), (Start: 15 @35755 has 104 MA's), (80, 35332), (89, 35272), (98, 35146), (112, 35083),

Gene: JuliaChild_50 Start: 36549, Stop: 35764, Start Num: 14

Candidate Starts for JuliaChild_50:

(Start: 14 @36549 has 50 MA's), (29, 36447), (33, 36414), (35, 36411), (45, 36369), (59, 36255), (61, 36246), (62, 36240), (68, 36213), (73, 36159), (83, 36105), (92, 36036), (95, 35982), (109, 35889), (117, 35850), (120, 35835),

Gene: KBG_51 Start: 37876, Stop: 37085, Start Num: 13

Candidate Starts for KBG_51:

(Start: 13 @37876 has 155 MA's), (28, 37774), (29, 37768), (51, 37660), (61, 37567), (62, 37561), (73, 37480), (76, 37453), (79, 37450), (85, 37405), (88, 37393), (92, 37357), (109, 37210), (117, 37171), (120, 37156),

Gene: KSSJEB_49 Start: 36542, Stop: 35751, Start Num: 13

Candidate Starts for KSSJEB_49:

(Start: 13 @36542 has 155 MA's), (28, 36440), (29, 36434), (51, 36326), (61, 36233), (85, 36071), (88, 36059), (92, 36023), (95, 35969), (109, 35876), (117, 35837), (120, 35822),

Gene: Kalpine_52 Start: 37009, Stop: 36338, Start Num: 16

Candidate Starts for Kalpine_52:

(Start: 16 @37009 has 35 MA's), (54, 36793), (56, 36745), (79, 36595), (93, 36484), (102, 36400),

Gene: Kanely_51 Start: 37191, Stop: 36406, Start Num: 14

Candidate Starts for Kanely_51:

(Start: 14 @37191 has 50 MA's), (27, 37104), (29, 37089), (33, 37056), (35, 37053), (45, 37011), (59, 36897), (61, 36888), (62, 36882), (68, 36855), (73, 36801), (83, 36747), (92, 36678), (95, 36624), (109, 36531), (117, 36492), (120, 36477),

Gene: Kenmech_53 Start: 37893, Stop: 37102, Start Num: 13

Candidate Starts for Kenmech_53:

(Start: 13 @37893 has 155 MA's), (Start: 23 @37839 has 1 MA's), (32, 37758), (59, 37593), (61, 37584), (62, 37578), (68, 37551), (73, 37497), (83, 37443), (92, 37374), (95, 37320), (109, 37227), (117, 37188), (120, 37173),

Gene: Kerberos_56 Start: 36631, Stop: 35924, Start Num: 15

Candidate Starts for Kerberos_56:

(Start: 15 @36631 has 104 MA's), (19, 36604), (22, 36583), (41, 36466), (65, 36307), (79, 36208), (82, 36193), (94, 36064), (98, 36019),

Gene: Killigrew_49 Start: 36603, Stop: 35818, Start Num: 14

Candidate Starts for Killigrew_49:

(Start: 14 @36603 has 50 MA's), (29, 36501), (33, 36468), (35, 36465), (45, 36423), (59, 36309), (61, 36300), (62, 36294), (68, 36267), (73, 36213), (92, 36090), (95, 36036), (109, 35943), (117, 35904), (120, 35889),

Gene: KingCyrus_56 Start: 38510, Stop: 37842, Start Num: 16

Candidate Starts for KingCyrus_56:

(1, 39014), (Start: 16 @38510 has 35 MA's), (43, 38345), (48, 38330), (49, 38324), (54, 38294), (74, 38126), (78, 38099), (93, 37985),

Gene: Kinmap_52 Start: 35304, Stop: 34558, Start Num: 15

Candidate Starts for Kinmap_52:

(10, 35451), (Start: 15 @35304 has 104 MA's), (22, 35259), (52, 35091), (64, 34986), (65, 34980), (78, 34884), (93, 34758), (100, 34686), (106, 34659), (118, 34605), (122, 34581),

Gene: Koduck_55 Start: 36040, Stop: 35336, Start Num: 15

Candidate Starts for Koduck_55:

(Start: 15 @36040 has 104 MA's), (37, 35893), (54, 35815), (65, 35716), (80, 35617), (89, 35557), (98, 35431), (112, 35368),

Gene: Kugel_50 Start: 36874, Stop: 36059, Start Num: 13

Candidate Starts for Kugel_50:

(Start: 13 @36874 has 155 MA's), (Start: 16 @36859 has 35 MA's), (Start: 23 @36820 has 1 MA's), (32, 36739), (59, 36574), (61, 36565), (62, 36559), (70, 36481), (92, 36331), (95, 36277), (117, 36145), (120, 36130),

Gene: KyMonks1A_51 Start: 36749, Stop: 35958, Start Num: 13

Candidate Starts for KyMonks1A_51:

(Start: 13 @36749 has 155 MA's), (Start: 16 @36734 has 35 MA's), (Start: 23 @36695 has 1 MA's), (32, 36614), (59, 36449), (61, 36440), (62, 36434), (68, 36407), (73, 36353), (83, 36299), (92, 36230), (95, 36176), (109, 36083), (117, 36044),

Gene: Kykar_49 Start: 36526, Stop: 35741, Start Num: 14

Candidate Starts for Kykar_49:

(Start: 14 @36526 has 50 MA's), (27, 36439), (29, 36424), (33, 36391), (35, 36388), (45, 36346), (59, 36232), (61, 36223), (62, 36217), (68, 36190), (73, 36136), (83, 36082), (92, 36013), (109, 35866), (117, 35827), (120, 35812),

Gene: L5_53 Start: 36115, Stop: 35411, Start Num: 15

Candidate Starts for L5_53:

(Start: 15 @36115 has 104 MA's), (37, 35968), (54, 35890), (65, 35791), (80, 35692), (89, 35632), (98, 35506), (112, 35443),

Gene: LadyBird_59 Start: 37733, Stop: 36972, Start Num: 15

Candidate Starts for LadyBird_59:

(10, 37898), (Start: 15 @37733 has 104 MA's), (Start: 23 @37679 has 1 MA's), (31, 37598), (57, 37454), (64, 37412), (65, 37406), (105, 37100), (121, 37019), (125, 36980),

Gene: Lamina13_50 Start: 36488, Stop: 35712, Start Num: 16

Candidate Starts for Lamina13_50:

(Start: 13 @36503 has 155 MA's), (Start: 16 @36488 has 35 MA's), (Start: 23 @36449 has 1 MA's), (32, 36368), (59, 36203), (61, 36194), (62, 36188), (68, 36161), (73, 36107), (83, 36053), (92, 35984), (117, 35798), (120, 35783),

Gene: Landor_54 Start: 38023, Stop: 37298, Start Num: 16

Candidate Starts for Landor_54:

(6, 38257), (Start: 16 @38023 has 35 MA's), (27, 37945), (34, 37894), (42, 37864), (45, 37852), (50, 37834), (64, 37714), (65, 37708), (74, 37639), (79, 37609), (85, 37564), (90, 37528), (93, 37498), (96, 37441), (113, 37390),

Gene: Larenn_53 Start: 36922, Stop: 36218, Start Num: 15

Candidate Starts for Larenn_53:

(Start: 15 @36922 has 104 MA's), (31, 36793), (64, 36607), (65, 36601), (82, 36487),

Gene: Leogania_54 Start: 37949, Stop: 37275, Start Num: 16

Candidate Starts for Leogania_54:

(10, 38117), (Start: 16 @37949 has 35 MA's), (22, 37913), (54, 37733), (58, 37676), (65, 37634), (67, 37625), (74, 37565), (79, 37535), (83, 37511), (89, 37472), (93, 37424),

Gene: Lesedi_46 Start: 35721, Stop: 34936, Start Num: 14

Candidate Starts for Lesedi_46:

(Start: 14 @35721 has 50 MA's), (29, 35619), (33, 35586), (35, 35583), (45, 35541), (59, 35427), (61, 35418), (62, 35412), (68, 35385), (73, 35331), (83, 35277), (92, 35208), (95, 35154), (109, 35061), (117, 35022), (120, 35007),

Gene: Levia_46 Start: 36546, Stop: 35755, Start Num: 13

Candidate Starts for Levia_46:

(Start: 13 @36546 has 155 MA's), (Start: 23 @36492 has 1 MA's), (32, 36411), (59, 36246), (61, 36237), (62, 36231), (68, 36204), (73, 36150), (83, 36096), (92, 36027), (95, 35973), (109, 35880), (117, 35841), (120, 35826),

Gene: Leviathan_56 Start: 37386, Stop: 36700, Start Num: 15

Candidate Starts for Leviathan_56:

(Start: 15 @37386 has 104 MA's), (22, 37335), (42, 37215), (45, 37203), (47, 37197), (64, 37065), (74, 36996), (98, 36780),

Gene: Licorice_52 Start: 37966, Stop: 37175, Start Num: 13

Candidate Starts for Licorice_52:

(Start: 13 @37966 has 155 MA's), (Start: 16 @37951 has 35 MA's), (Start: 23 @37912 has 1 MA's), (32, 37831), (59, 37666), (61, 37657), (62, 37651), (68, 37624), (73, 37570), (83, 37516), (92, 37447), (117, 37261), (120, 37246),

Gene: LilBib_49 Start: 37024, Stop: 36233, Start Num: 13

Candidate Starts for LilBib_49:

(Start: 13 @37024 has 155 MA's), (Start: 16 @37009 has 35 MA's), (Start: 23 @36970 has 1 MA's), (32, 36889), (61, 36715), (62, 36709), (68, 36682), (73, 36628), (83, 36574), (92, 36505), (117, 36319), (120, 36304),

Gene: LilTurb_55 Start: 37210, Stop: 36524, Start Num: 15

Candidate Starts for LilTurb_55:

(Start: 15 @37210 has 104 MA's), (22, 37159), (42, 37039), (45, 37027), (47, 37021), (64, 36889), (74, 36820), (98, 36604),

Gene: LionsBait_56 Start: 38410, Stop: 37637, Start Num: 16

Candidate Starts for LionsBait_56:

(10, 38578), (Start: 15 @38413 has 104 MA's), (Start: 16 @38410 has 35 MA's), (43, 38245), (48, 38230), (49, 38224), (51, 38209), (65, 38095), (66, 38089), (74, 38026), (93, 37888), (96, 37831), (113, 37753), (116, 37735), (119, 37723), (126, 37645),

Gene: Lockley_48 Start: 36245, Stop: 35460, Start Num: 14

Candidate Starts for Lockley_48:

(Start: 12 @36251 has 1 MA's), (Start: 14 @36245 has 50 MA's), (29, 36143), (33, 36110), (35, 36107), (45, 36065), (59, 35951), (61, 35942), (62, 35936), (73, 35855), (76, 35828), (79, 35825), (92, 35732), (95, 35678), (109, 35585), (117, 35546), (120, 35531),

Gene: Lokk_51 Start: 36207, Stop: 35464, Start Num: 16

Candidate Starts for Lokk_51:

(2, 36612), (Start: 15 @36210 has 104 MA's), (Start: 16 @36207 has 35 MA's), (25, 36141), (51, 36006), (55, 35955), (61, 35913), (72, 35835), (93, 35688), (96, 35631), (113, 35580), (119, 35550), (124, 35511), (126, 35472),

Gene: Lopton_50 Start: 37851, Stop: 37060, Start Num: 13

Candidate Starts for Lopton_50:

(Start: 13 @37851 has 155 MA's), (28, 37749), (29, 37743), (51, 37635), (61, 37542), (85, 37380), (88, 37368), (92, 37332), (95, 37278), (109, 37185), (117, 37146), (120, 37131),

Gene: Loser_56 Start: 37765, Stop: 37091, Start Num: 15

Candidate Starts for Loser_56:

(Start: 15 @37765 has 104 MA's), (34, 37633), (41, 37606), (49, 37576), (61, 37468), (65, 37447), (73, 37381), (74, 37378), (79, 37348), (93, 37237), (102, 37153),

Gene: Luchador_58 Start: 38522, Stop: 37764, Start Num: 16

Candidate Starts for Luchador_58:

(Start: 16 @38522 has 35 MA's), (52, 38303), (54, 38291), (55, 38255), (63, 38204), (65, 38192), (67, 38183), (81, 38093), (90, 38012), (96, 37934), (99, 37922), (111, 37865),

Gene: Lucivia_54 Start: 36252, Stop: 35560, Start Num: 15

Candidate Starts for Lucivia_54:

(Start: 15 @36252 has 104 MA's), (18, 36243), (27, 36174), (39, 36102), (78, 35841), (93, 35715),

Gene: Lucyedi_55 Start: 36663, Stop: 35938, Start Num: 16

Candidate Starts for Lucyedi_55:

(3, 37038), (Start: 16 @36663 has 35 MA's), (22, 36627), (26, 36588), (36, 36528), (41, 36507), (45, 36492), (49, 36477), (51, 36462), (52, 36459), (56, 36399), (64, 36354), (65, 36348), (67, 36339), (81, 36246), (96, 36084), (100, 36069),

Gene: LunarLander_54 Start: 37023, Stop: 36238, Start Num: 14

Candidate Starts for LunarLander_54:

(Start: 14 @37023 has 50 MA's), (29, 36921), (33, 36888), (35, 36885), (45, 36843), (59, 36729), (61, 36720), (62, 36714), (68, 36687), (73, 36633), (83, 36579), (92, 36510), (95, 36456), (109, 36363), (117, 36324), (120, 36309),

Gene: MPlant7149_48 Start: 35817, Stop: 35002, Start Num: 13

Candidate Starts for MPlant7149_48:

(Start: 13 @35817 has 155 MA's), (Start: 23 @35763 has 1 MA's), (32, 35682), (61, 35508), (62, 35502), (70, 35424), (80, 35364), (85, 35322), (88, 35310), (92, 35274), (95, 35220), (109, 35127), (117, 35088), (120, 35073),

Gene: MaCh_54 Start: 36182, Stop: 35490, Start Num: 15

Candidate Starts for MaCh_54:

(Start: 15 @36182 has 104 MA's), (18, 36173), (27, 36104), (39, 36032), (78, 35771), (93, 35645),

Gene: Mabel_53 Start: 35784, Stop: 35092, Start Num: 15

Candidate Starts for Mabel_53:

(Start: 15 @35784 has 104 MA's), (18, 35775), (27, 35706), (39, 35634), (78, 35373), (93, 35247),

Gene: Magnar_49 Start: 37267, Stop: 36476, Start Num: 13

Candidate Starts for Magnar_49:

(Start: 13 @37267 has 155 MA's), (Start: 16 @37252 has 35 MA's), (Start: 23 @37213 has 1 MA's), (32, 37132), (59, 36967), (61, 36958), (62, 36952), (68, 36925), (73, 36871), (83, 36817), (92, 36748), (95, 36694), (109, 36601), (117, 36562), (120, 36547),

Gene: Magnito_48 Start: 35871, Stop: 35080, Start Num: 13

Candidate Starts for Magnito_48:

(Start: 13 @35871 has 155 MA's), (Start: 23 @35817 has 1 MA's), (32, 35736), (59, 35571), (61, 35562), (62, 35556), (68, 35529), (73, 35475), (83, 35421), (92, 35352), (95, 35298), (109, 35205), (117, 35166), (120, 35151),

Gene: MajorMajor_53 Start: 35786, Stop: 35082, Start Num: 15

Candidate Starts for MajorMajor_53:

(3, 36119), (10, 35951), (Start: 15 @35786 has 104 MA's), (37, 35639), (65, 35462), (80, 35363), (89, 35303), (98, 35177), (112, 35114),

Gene: Makemake_49 Start: 37321, Stop: 36530, Start Num: 13

Candidate Starts for Makemake_49:

(Start: 13 @37321 has 155 MA's), (Start: 23 @37267 has 1 MA's), (32, 37186), (59, 37021), (61, 37012), (62, 37006), (68, 36979), (73, 36925), (83, 36871), (92, 36802), (95, 36748), (117, 36616), (120, 36601),

Gene: Malec_54 Start: 37489, Stop: 36785, Start Num: 15

Candidate Starts for Malec_54:

(Start: 15 @37489 has 104 MA's), (31, 37360), (64, 37174), (65, 37168), (82, 37054),

Gene: Manatee_51 Start: 36397, Stop: 35606, Start Num: 13

Candidate Starts for Manatee_51:

(Start: 13 @36397 has 155 MA's), (28, 36295), (29, 36289), (51, 36181), (61, 36088), (62, 36082), (85, 35926), (88, 35914), (92, 35878), (109, 35731), (117, 35692), (120, 35677),

Gene: Marcell_47 Start: 36187, Stop: 35396, Start Num: 13

Candidate Starts for Marcell_47:

(Start: 13 @36187 has 155 MA's), (Start: 16 @36172 has 35 MA's), (Start: 23 @36133 has 1 MA's), (30, 36070), (32, 36052), (59, 35887), (61, 35878), (62, 35872), (73, 35791), (76, 35764), (79, 35761), (92, 35668), (95, 35614), (109, 35521), (117, 35482), (120, 35467),

Gene: Marchy_44 Start: 33301, Stop: 32510, Start Num: 13

Candidate Starts for Marchy_44:

(Start: 13 @33301 has 155 MA's), (28, 33199), (29, 33193), (51, 33085), (61, 32992), (62, 32986), (85, 32830), (88, 32818), (92, 32782), (109, 32635), (117, 32596), (120, 32581),

Gene: Marco3_52 Start: 37656, Stop: 36865, Start Num: 13

Candidate Starts for Marco3_52:

(Start: 13 @37656 has 155 MA's), (Start: 23 @37602 has 1 MA's), (32, 37521), (59, 37356), (61, 37347), (62, 37341), (68, 37314), (73, 37260), (83, 37206), (92, 37137), (95, 37083), (117, 36951), (120, 36936),

Gene: Marge_49 Start: 36998, Stop: 36207, Start Num: 13

Candidate Starts for Marge_49:

(Start: 13 @36998 has 155 MA's), (Start: 16 @36983 has 35 MA's), (Start: 23 @36944 has 1 MA's), (32, 36863), (59, 36698), (61, 36689), (62, 36683), (68, 36656), (73, 36602), (83, 36548), (92, 36479), (109, 36332), (117, 36293), (120, 36278),

Gene: Maroc7_47 Start: 36115, Stop: 35300, Start Num: 13

Candidate Starts for Maroc7_47:

(Start: 13 @36115 has 155 MA's), (Start: 16 @36100 has 35 MA's), (Start: 23 @36061 has 1 MA's), (32, 35980), (59, 35815), (61, 35806), (62, 35800), (70, 35722), (80, 35662), (85, 35620), (88, 35608), (92, 35572), (95, 35518), (109, 35425), (117, 35386), (120, 35371),

Gene: Marsha_49 Start: 37554, Stop: 36763, Start Num: 13

Candidate Starts for Marsha_49:

(Start: 13 @37554 has 155 MA's), (Start: 16 @37539 has 35 MA's), (Start: 23 @37500 has 1 MA's), (32, 37419), (59, 37254), (61, 37245), (62, 37239), (68, 37212), (73, 37158), (83, 37104), (92, 37035), (117, 36849), (120, 36834),

Gene: MaryBeth_49 Start: 36460, Stop: 35669, Start Num: 13

Candidate Starts for MaryBeth_49:

(Start: 13 @36460 has 155 MA's), (Start: 23 @36406 has 1 MA's), (32, 36325), (59, 36160), (61, 36151), (62, 36145), (68, 36118), (73, 36064), (83, 36010), (92, 35941), (95, 35887), (117, 35755), (120, 35740),

Gene: McGuire_51 Start: 36646, Stop: 35855, Start Num: 13

Candidate Starts for McGuire_51:

(Start: 13 @36646 has 155 MA's), (28, 36544), (29, 36538), (37, 36493), (51, 36430), (61, 36337), (80, 36217), (85, 36175), (88, 36163), (92, 36127), (109, 35980), (117, 35941), (120, 35926),

Gene: McSinger_50 Start: 36797, Stop: 36012, Start Num: 14

Candidate Starts for McSinger_50:

(Start: 14 @36797 has 50 MA's), (29, 36695), (33, 36662), (35, 36659), (45, 36617), (59, 36503), (61, 36494), (62, 36488), (68, 36461), (73, 36407), (76, 36380), (79, 36377), (92, 36284), (95, 36230), (109, 36137), (117, 36098), (120, 36083),

Gene: MetalQZJ_48 Start: 36460, Stop: 35669, Start Num: 13

Candidate Starts for MetalQZJ_48:

(Start: 13 @36460 has 155 MA's), (Start: 23 @36406 has 1 MA's), (32, 36325), (59, 36160), (61, 36151), (62, 36145), (68, 36118), (73, 36064), (83, 36010), (92, 35941), (95, 35887), (117, 35755), (120, 35740),

Gene: Michley_49 Start: 36291, Stop: 35500, Start Num: 13

Candidate Starts for Michley_49:

(Start: 13 @36291 has 155 MA's), (Start: 16 @36276 has 35 MA's), (Start: 23 @36237 has 1 MA's), (32, 36156), (59, 35991), (61, 35982), (62, 35976), (73, 35895), (83, 35841), (92, 35772), (109, 35625), (117, 35586), (120, 35571),

Gene: MiculUcigas_54 Start: 36715, Stop: 36020, Start Num: 15

Candidate Starts for MiculUcigas_54:

(7, 36922), (Start: 15 @36715 has 104 MA's), (41, 36553), (54, 36493), (65, 36394), (74, 36325), (78, 36298), (82, 36280), (93, 36178),

Gene: Miko_51 Start: 36985, Stop: 36242, Start Num: 16

Candidate Starts for Miko_51:

(Start: 15 @36988 has 104 MA's), (Start: 16 @36985 has 35 MA's), (25, 36919), (51, 36784), (52, 36781), (55, 36733), (61, 36691), (72, 36613), (93, 36466), (96, 36409), (113, 36358), (119, 36328), (124, 36289), (126, 36250),

Gene: MissWhite_53 Start: 35277, Stop: 34594, Start Num: 17

Candidate Starts for MissWhite_53:

(Start: 17 @35277 has 1 MA's), (22, 35241), (34, 35148), (42, 35118), (65, 34962), (69, 34935), (74, 34893), (75, 34887), (93, 34752),

Gene: Mkhuseleli_48 Start: 35863, Stop: 35072, Start Num: 13

Candidate Starts for Mkhuseleli_48:

(Start: 13 @35863 has 155 MA's), (Start: 16 @35848 has 35 MA's), (Start: 23 @35809 has 1 MA's), (32, 35728), (59, 35563), (61, 35554), (62, 35548), (73, 35467), (92, 35344), (95, 35290), (109, 35197), (117, 35158), (120, 35143),

Gene: Molly_50 Start: 35861, Stop: 35076, Start Num: 14

Candidate Starts for Molly_50:

(Start: 14 @35861 has 50 MA's), (29, 35759), (33, 35726), (35, 35723), (45, 35681), (59, 35567), (61, 35558), (62, 35552), (68, 35525), (73, 35471), (83, 35417), (92, 35348), (95, 35294), (109, 35201), (117, 35162), (120, 35147),

Gene: Monet_52 Start: 37990, Stop: 37199, Start Num: 13

Candidate Starts for Monet_52:

(Start: 13 @37990 has 155 MA's), (Start: 16 @37975 has 35 MA's), (32, 37855), (59, 37690), (61, 37681), (62, 37675), (73, 37594), (83, 37540), (92, 37471), (109, 37324), (117, 37285), (120, 37270),

Gene: Moose_49 Start: 36355, Stop: 35570, Start Num: 14

Candidate Starts for Moose_49:

(Start: 14 @36355 has 50 MA's), (27, 36268), (29, 36253), (33, 36220), (35, 36217), (45, 36175), (59, 36061), (61, 36052), (62, 36046), (68, 36019), (73, 35965), (83, 35911), (92, 35842), (95, 35788), (109, 35695), (117, 35656), (120, 35641),

Gene: MrGordo_49 Start: 36079, Stop: 35294, Start Num: 14

Candidate Starts for MrGordo_49:

(Start: 14 @36079 has 50 MA's), (29, 35977), (33, 35944), (35, 35941), (45, 35899), (59, 35785), (61, 35776), (62, 35770), (68, 35743), (73, 35689), (83, 35635), (92, 35566), (109, 35419), (117, 35380), (120, 35365),

Gene: Mryolo_47 Start: 35863, Stop: 35048, Start Num: 13

Candidate Starts for Mryolo_47:

(Start: 13 @35863 has 155 MA's), (Start: 16 @35848 has 35 MA's), (Start: 23 @35809 has 1 MA's), (32, 35728), (59, 35563), (61, 35554), (62, 35548), (70, 35470), (80, 35410), (85, 35368), (88, 35356), (92, 35320), (95, 35266), (109, 35173), (117, 35134), (120, 35119),

Gene: Mulciber_53 Start: 35740, Stop: 35048, Start Num: 15

Candidate Starts for Mulciber_53:

(Start: 15 @35740 has 104 MA's), (18, 35731), (27, 35662), (39, 35590), (78, 35329), (93, 35203),

Gene: Mule_46 Start: 34004, Stop: 33219, Start Num: 14

Candidate Starts for Mule_46:

(Start: 14 @34004 has 50 MA's), (29, 33902), (33, 33869), (35, 33866), (45, 33824), (59, 33710), (61, 33701), (62, 33695), (68, 33668), (73, 33614), (76, 33587), (79, 33584), (92, 33491), (95, 33437), (109, 33344), (117, 33305), (120, 33290),

Gene: Munch_54 Start: 36203, Stop: 35511, Start Num: 15

Candidate Starts for Munch_54:

(Start: 15 @36203 has 104 MA's), (18, 36194), (27, 36125), (39, 36053), (78, 35792), (93, 35666),

Gene: Museum_50 Start: 36042, Stop: 35227, Start Num: 13

Candidate Starts for Museum_50:

(Start: 13 @36042 has 155 MA's), (Start: 23 @35988 has 1 MA's), (32, 35907), (61, 35733), (62, 35727), (70, 35649), (80, 35589), (85, 35547), (88, 35535), (92, 35499), (109, 35352), (117, 35313), (120, 35298),

Gene: NEHalo_47 Start: 35779, Stop: 34994, Start Num: 14

Candidate Starts for NEHalo_47:

(Start: 14 @35779 has 50 MA's), (29, 35677), (33, 35644), (35, 35641), (45, 35599), (59, 35485), (61, 35476), (62, 35470), (68, 35443), (73, 35389), (92, 35266), (95, 35212), (109, 35119), (117, 35080), (120, 35065),

Gene: NaSiaTalie_54 Start: 36809, Stop: 36114, Start Num: 15

Candidate Starts for NaSiaTalie_54:

(6, 37040), (7, 37016), (8, 37001), (Start: 15 @36809 has 104 MA's), (41, 36647), (54, 36587), (65, 36488), (74, 36419), (78, 36392), (82, 36374), (93, 36272), (102, 36188),

Gene: Naira_52 Start: 38755, Stop: 37964, Start Num: 13

Candidate Starts for Naira_52:

(Start: 13 @38755 has 155 MA's), (Start: 23 @38701 has 1 MA's), (32, 38620), (59, 38455), (61, 38446), (62, 38440), (68, 38413), (73, 38359), (83, 38305), (92, 38236), (109, 38089), (117, 38050), (120, 38035),

Gene: Naji_56 Start: 36632, Stop: 35925, Start Num: 15

Candidate Starts for Naji_56:

(Start: 15 @36632 has 104 MA's), (19, 36605), (22, 36584), (41, 36467), (65, 36308), (79, 36209), (82, 36194), (94, 36065), (98, 36020),

Gene: Nedarya_55 Start: 35344, Stop: 34664, Start Num: 15

Candidate Starts for Nedarya_55:

(Start: 15 @35344 has 104 MA's), (Start: 17 @35335 has 1 MA's), (29, 35242), (40, 35185), (49, 35149), (52, 35131), (64, 35026), (65, 35020), (96, 34756), (103, 34723), (115, 34675),

Gene: Nerujay_52 Start: 37444, Stop: 36659, Start Num: 14

Candidate Starts for Nerujay_52:

(Start: 12 @37450 has 1 MA's), (Start: 14 @37444 has 50 MA's), (29, 37342), (33, 37309), (35, 37306), (45, 37264), (59, 37150), (61, 37141), (62, 37135), (68, 37108), (73, 37054), (76, 37027), (79, 37024), (92, 36931), (95, 36877), (109, 36784), (117, 36745), (120, 36730),

Gene: Nhonho_50 Start: 36956, Stop: 36165, Start Num: 13

Candidate Starts for Nhonho_50:

(Start: 13 @36956 has 155 MA's), (Start: 23 @36902 has 1 MA's), (32, 36821), (59, 36656), (61, 36647), (62, 36641), (68, 36614), (73, 36560), (83, 36506), (92, 36437), (95, 36383), (109, 36290), (117, 36251), (120, 36236),

Gene: NicoleTera_53 Start: 37099, Stop: 36425, Start Num: 15

Candidate Starts for NicoleTera_53:

(Start: 15 @37099 has 104 MA's), (34, 36967), (43, 36931), (48, 36916), (49, 36910), (58, 36823), (79, 36682), (93, 36571), (102, 36487),

Gene: Niza_52 Start: 37862, Stop: 37071, Start Num: 13

Candidate Starts for Niza_52:

(Start: 13 @37862 has 155 MA's), (Start: 23 @37808 has 1 MA's), (32, 37727), (59, 37562), (61, 37553), (62, 37547), (68, 37520), (73, 37466), (83, 37412), (92, 37343), (95, 37289), (109, 37196), (117, 37157), (120, 37142),

Gene: Norz_50 Start: 37037, Stop: 36246, Start Num: 13

Candidate Starts for Norz_50:

(Start: 13 @37037 has 155 MA's), (Start: 23 @36983 has 1 MA's), (32, 36902), (59, 36737), (61, 36728), (62, 36722), (68, 36695), (73, 36641), (83, 36587), (92, 36518), (95, 36464), (109, 36371), (117, 36332), (120, 36317),

Gene: NothingSpecial_52 Start: 37316, Stop: 36636, Start Num: 16

Candidate Starts for NothingSpecial_52:

(Start: 16 @37316 has 35 MA's), (41, 37160), (49, 37130), (65, 37001), (73, 36935), (81, 36899), (90, 36824), (93, 36794), (98, 36731), (112, 36668),

Gene: Odin_52 Start: 35654, Stop: 34950, Start Num: 15

Candidate Starts for Odin_52:

(Start: 15 @35654 has 104 MA's), (18, 35636), (22, 35609), (24, 35588), (41, 35492), (57, 35381), (65, 35333), (97, 35048),

Gene: Ohno789_51 Start: 37546, Stop: 36761, Start Num: 14

Candidate Starts for Ohno789_51:

(Start: 14 @37546 has 50 MA's), (29, 37444), (33, 37411), (35, 37408), (45, 37366), (59, 37252), (61, 37243), (62, 37237), (68, 37210), (73, 37156), (83, 37102), (92, 37033), (95, 36979), (117, 36847),

(120, 36832),

Gene: Oogway_48 Start: 35707, Stop: 34922, Start Num: 14

Candidate Starts for Oogway_48:

(Start: 14 @35707 has 50 MA's), (29, 35605), (33, 35572), (35, 35569), (45, 35527), (59, 35413), (61, 35404), (62, 35398), (68, 35371), (73, 35317), (92, 35194), (109, 35047), (120, 34993),

Gene: Orange_53 Start: 35752, Stop: 35060, Start Num: 15

Candidate Starts for Orange_53:

(Start: 15 @35752 has 104 MA's), (18, 35743), (27, 35674), (39, 35602), (78, 35341), (93, 35215),

Gene: PSullivan_49 Start: 35823, Stop: 35038, Start Num: 14

Candidate Starts for PSullivan_49:

(Start: 14 @35823 has 50 MA's), (29, 35721), (33, 35688), (35, 35685), (45, 35643), (59, 35529), (61, 35520), (62, 35514), (68, 35487), (73, 35433), (83, 35379), (92, 35310), (95, 35256), (109, 35163), (117, 35124), (120, 35109),

Gene: PacerPaul_49 Start: 36567, Stop: 35782, Start Num: 14

Candidate Starts for PacerPaul_49:

(Start: 14 @36567 has 50 MA's), (29, 36465), (33, 36432), (35, 36429), (45, 36387), (59, 36273), (61, 36264), (62, 36258), (68, 36231), (73, 36177), (83, 36123), (92, 36054), (95, 36000), (109, 35907), (117, 35868), (120, 35853),

Gene: PainterBoy_55 Start: 36600, Stop: 35875, Start Num: 16

Candidate Starts for PainterBoy_55:

(3, 36975), (Start: 16 @36600 has 35 MA's), (22, 36564), (26, 36525), (36, 36465), (41, 36444), (45, 36429), (49, 36414), (51, 36399), (52, 36396), (56, 36336), (64, 36291), (65, 36285), (67, 36276), (81, 36183), (96, 36021), (100, 36006),

Gene: Papez_52 Start: 38953, Stop: 38162, Start Num: 13

Candidate Starts for Papez_52:

(Start: 13 @38953 has 155 MA's), (28, 38851), (29, 38845), (51, 38737), (61, 38644), (62, 38638), (73, 38557), (76, 38530), (79, 38527), (85, 38482), (88, 38470), (92, 38434), (109, 38287), (117, 38248), (120, 38233),

Gene: Paphu_47 Start: 36087, Stop: 35296, Start Num: 13

Candidate Starts for Paphu_47:

(Start: 13 @36087 has 155 MA's), (Start: 16 @36072 has 35 MA's), (Start: 23 @36033 has 1 MA's), (32, 35952), (61, 35778), (62, 35772), (68, 35745), (73, 35691), (83, 35637), (92, 35568), (109, 35421), (117, 35382), (120, 35367),

Gene: Paraselene_47 Start: 36451, Stop: 35660, Start Num: 13

Candidate Starts for Paraselene_47:

(Start: 13 @36451 has 155 MA's), (Start: 23 @36397 has 1 MA's), (32, 36316), (59, 36151), (61, 36142), (62, 36136), (68, 36109), (73, 36055), (83, 36001), (92, 35932), (95, 35878), (109, 35785), (117, 35746), (120, 35731),

Gene: Pari_51 Start: 36488, Stop: 35673, Start Num: 13

Candidate Starts for Pari_51:

(Start: 13 @36488 has 155 MA's), (Start: 23 @36434 has 1 MA's), (32, 36353), (59, 36188), (61, 36179), (62, 36173), (70, 36095), (80, 36035), (85, 35993), (88, 35981), (92, 35945), (95, 35891), (109, 35798), (117, 35759),

Gene: Parliament_49 Start: 37001, Stop: 36210, Start Num: 13

Candidate Starts for Parliament_49:

(Start: 13 @37001 has 155 MA's), (Start: 23 @36947 has 1 MA's), (32, 36866), (59, 36701), (61, 36692), (62, 36686), (68, 36659), (73, 36605), (83, 36551), (92, 36482), (95, 36428), (109, 36335), (117, 36296), (120, 36281),

Gene: PascalRango_50 Start: 36346, Stop: 35555, Start Num: 13

Candidate Starts for PascalRango_50:

(Start: 13 @36346 has 155 MA's), (28, 36244), (29, 36238), (37, 36193), (51, 36130), (61, 36037), (80, 35917), (85, 35875), (88, 35863), (92, 35827), (95, 35773), (109, 35680), (117, 35641), (120, 35626),

Gene: PattyP_50 Start: 36211, Stop: 35420, Start Num: 13

Candidate Starts for PattyP_50:

(Start: 13 @36211 has 155 MA's), (28, 36109), (29, 36103), (51, 35995), (61, 35902), (62, 35896), (73, 35815), (76, 35788), (79, 35785), (85, 35740), (88, 35728), (92, 35692), (109, 35545), (117, 35506), (120, 35491),

Gene: Payneful_49 Start: 36018, Stop: 35227, Start Num: 13

Candidate Starts for Payneful_49:

(Start: 13 @36018 has 155 MA's), (28, 35916), (29, 35910), (51, 35802), (61, 35709), (62, 35703), (85, 35547), (88, 35535), (92, 35499), (109, 35352), (117, 35313), (120, 35298),

Gene: Pelly_49 Start: 36925, Stop: 36134, Start Num: 13

Candidate Starts for Pelly_49:

(Start: 13 @36925 has 155 MA's), (Start: 16 @36910 has 35 MA's), (Start: 23 @36871 has 1 MA's), (32, 36790), (59, 36625), (61, 36616), (62, 36610), (73, 36529), (76, 36502), (79, 36499), (92, 36406), (95, 36352), (117, 36220), (120, 36205),

Gene: Pepe_46 Start: 34772, Stop: 33981, Start Num: 13

Candidate Starts for Pepe_46:

(Start: 13 @34772 has 155 MA's), (Start: 23 @34718 has 1 MA's), (32, 34637), (59, 34472), (61, 34463), (62, 34457), (68, 34430), (73, 34376), (83, 34322), (92, 34253), (95, 34199), (109, 34106), (117, 34067), (120, 34052),

Gene: Perseus_49 Start: 36890, Stop: 36105, Start Num: 14

Candidate Starts for Perseus_49:

(Start: 14 @36890 has 50 MA's), (29, 36788), (33, 36755), (35, 36752), (45, 36710), (59, 36596), (61, 36587), (62, 36581), (68, 36554), (73, 36500), (76, 36473), (79, 36470), (92, 36377), (95, 36323), (109, 36230), (117, 36191), (120, 36176),

Gene: Petersenfast_52 Start: 35751, Stop: 35059, Start Num: 15

Candidate Starts for Petersenfast_52:

(Start: 15 @35751 has 104 MA's), (18, 35742), (27, 35673), (39, 35601), (78, 35340), (93, 35214),

Gene: Peterson_54 Start: 39194, Stop: 38403, Start Num: 13

Candidate Starts for Peterson_54:

(Start: 13 @39194 has 155 MA's), (Start: 16 @39179 has 35 MA's), (Start: 23 @39140 has 1 MA's), (32, 39059), (59, 38894), (61, 38885), (62, 38879), (68, 38852), (73, 38798), (83, 38744), (92, 38675), (95, 38621), (109, 38528), (117, 38489), (120, 38474),

Gene: Petp2012_50 Start: 36820, Stop: 36035, Start Num: 14

Candidate Starts for Petp2012_50:

(Start: 14 @36820 has 50 MA's), (29, 36718), (33, 36685), (35, 36682), (45, 36640), (59, 36526), (61, 36517), (62, 36511), (68, 36484), (73, 36430), (83, 36376), (92, 36307), (95, 36253), (109, 36160), (117, 36121), (120, 36106),

Gene: Petruccio_49 Start: 36557, Stop: 35766, Start Num: 13

Candidate Starts for Petruccio_49:

(Start: 13 @36557 has 155 MA's), (Start: 16 @36542 has 35 MA's), (Start: 23 @36503 has 1 MA's), (32, 36422), (59, 36257), (61, 36248), (62, 36242), (68, 36215), (73, 36161), (83, 36107), (92, 36038), (109, 35891), (117, 35852), (120, 35837),

Gene: Ph8s_55 Start: 36008, Stop: 35307, Start Num: 15

Candidate Starts for Ph8s_55:

(3, 36341), (Start: 15 @36008 has 104 MA's), (41, 35846), (43, 35837), (63, 35699), (65, 35687), (74, 35618), (82, 35576), (83, 35567), (94, 35447), (97, 35405),

Gene: Phaded_55 Start: 38002, Stop: 37277, Start Num: 16

Candidate Starts for Phaded_55:

(6, 38236), (Start: 16 @38002 has 35 MA's), (27, 37924), (34, 37873), (42, 37843), (45, 37831), (50, 37813), (64, 37693), (65, 37687), (74, 37618), (79, 37588), (85, 37543), (90, 37507), (93, 37477), (96, 37420), (113, 37369),

Gene: Pharaoh_49 Start: 36570, Stop: 35899, Start Num: 16

Candidate Starts for Pharaoh_49:

(Start: 16 @36570 has 35 MA's), (27, 36492), (43, 36405), (49, 36384), (65, 36255), (77, 36159), (93, 36045), (102, 35961),

Gene: PherrisBueller_49 Start: 35826, Stop: 35035, Start Num: 13

Candidate Starts for PherrisBueller_49:

(Start: 13 @35826 has 155 MA's), (Start: 23 @35772 has 1 MA's), (32, 35691), (59, 35526), (61, 35517), (62, 35511), (68, 35484), (73, 35430), (83, 35376), (92, 35307), (109, 35160), (117, 35121), (120, 35106),

Gene: PhineBark_50 Start: 37564, Stop: 36773, Start Num: 13

Candidate Starts for PhineBark_50:

(Start: 13 @37564 has 155 MA's), (Start: 23 @37510 has 1 MA's), (32, 37429), (59, 37264), (61, 37255), (62, 37249), (68, 37222), (73, 37168), (83, 37114), (92, 37045), (95, 36991), (109, 36898), (117, 36859), (120, 36844),

Gene: Phlippers_48 Start: 37471, Stop: 36680, Start Num: 13

Candidate Starts for Phlippers_48:

(Start: 13 @37471 has 155 MA's), (Start: 23 @37417 has 1 MA's), (32, 37336), (59, 37171), (61, 37162), (62, 37156), (68, 37129), (73, 37075), (83, 37021), (92, 36952), (95, 36898), (109, 36805), (117, 36766), (120, 36751),

Gene: PhrostyMug_48 Start: 36169, Stop: 35384, Start Num: 14

Candidate Starts for PhrostyMug_48:

(Start: 14 @36169 has 50 MA's), (29, 36067), (33, 36034), (35, 36031), (45, 35989), (59, 35875), (61, 35866), (62, 35860), (68, 35833), (73, 35779), (76, 35752), (79, 35749), (92, 35656), (95, 35602), (109, 35509), (117, 35470), (120, 35455),

Gene: PinkPlastic_49 Start: 36394, Stop: 35609, Start Num: 14

Candidate Starts for PinkPlastic_49:

(Start: 12 @36400 has 1 MA's), (Start: 14 @36394 has 50 MA's), (27, 36307), (29, 36292), (33, 36259), (35, 36256), (45, 36214), (59, 36100), (61, 36091), (62, 36085), (68, 36058), (73, 36004), (83, 35950), (92, 35881), (95, 35827), (109, 35734), (117, 35695), (120, 35680),

Gene: Pinto_49 Start: 36038, Stop: 35223, Start Num: 13

Candidate Starts for Pinto_49:

(Start: 13 @36038 has 155 MA's), (Start: 23 @35984 has 1 MA's), (32, 35903), (59, 35738), (61, 35729), (62, 35723), (70, 35645), (80, 35585), (85, 35543), (88, 35531), (92, 35495), (95, 35441), (117, 35309), (120, 35294),

Gene: Pippin_51 Start: 36924, Stop: 36133, Start Num: 13

Candidate Starts for Pippin_51:

(Start: 13 @36924 has 155 MA's), (Start: 16 @36909 has 35 MA's), (Start: 23 @36870 has 1 MA's), (32, 36789), (59, 36624), (61, 36615), (62, 36609), (73, 36528), (83, 36474), (92, 36405), (109, 36258), (117, 36219), (120, 36204),

Gene: Piro94_54 Start: 37156, Stop: 36461, Start Num: 15

Candidate Starts for Piro94_54:

(6, 37387), (7, 37363), (Start: 15 @37156 has 104 MA's), (41, 36994), (54, 36934), (65, 36835), (74, 36766), (78, 36739), (82, 36721), (93, 36619),

Gene: Pita2_52 Start: 37320, Stop: 36535, Start Num: 14

Candidate Starts for Pita2_52:

(Start: 14 @37320 has 50 MA's), (29, 37218), (33, 37185), (35, 37182), (45, 37140), (59, 37026), (61, 37017), (62, 37011), (68, 36984), (73, 36930), (83, 36876), (92, 36807), (95, 36753), (109, 36660), (117, 36621), (120, 36606),

Gene: Pomar16_56 Start: 36672, Stop: 35965, Start Num: 15

Candidate Starts for Pomar16_56:

(Start: 15 @36672 has 104 MA's), (19, 36645), (22, 36624), (41, 36507), (65, 36348), (79, 36249), (82, 36234), (94, 36105), (98, 36060),

Gene: Power_53 Start: 36797, Stop: 36105, Start Num: 15

Candidate Starts for Power_53:

(1, 37298), (Start: 15 @36797 has 104 MA's), (22, 36749), (41, 36632), (74, 36404), (79, 36374), (83, 36350), (94, 36230),

Gene: ProMouse_50 Start: 37031, Stop: 36246, Start Num: 14

Candidate Starts for ProMouse_50:

(Start: 14 @37031 has 50 MA's), (29, 36929), (33, 36896), (35, 36893), (45, 36851), (61, 36728), (62, 36722), (68, 36695), (73, 36641), (76, 36614), (79, 36611), (92, 36518), (95, 36464), (109, 36371), (117, 36332), (120, 36317),

Gene: Pukovnik_53 Start: 37659, Stop: 36934, Start Num: 16

Candidate Starts for Pukovnik_53:

(Start: 16 @37659 has 35 MA's), (27, 37581), (34, 37530), (49, 37473), (58, 37386), (61, 37365), (63, 37356), (65, 37344), (74, 37275), (78, 37248), (90, 37164), (93, 37134), (96, 37077), (113, 37026),

Gene: QTRlifeCrisis_49 Start: 37022, Stop: 36231, Start Num: 13

Candidate Starts for QTRlifeCrisis_49:

(Start: 13 @37022 has 155 MA's), (Start: 16 @37007 has 35 MA's), (Start: 23 @36968 has 1 MA's), (32, 36887), (59, 36722), (61, 36713), (62, 36707), (73, 36626), (83, 36572), (92, 36503), (95, 36449), (109, 36356), (117, 36317), (120, 36302),

Gene: QueenB2_53 Start: 36775, Stop: 36089, Start Num: 15

Candidate Starts for QueenB2_53:

(10, 36937), (Start: 15 @36775 has 104 MA's), (20, 36736), (42, 36604), (45, 36592), (47, 36586), (64, 36454), (74, 36385), (94, 36214), (97, 36172), (98, 36169),

Gene: QueenBeesly_54 Start: 36744, Stop: 36052, Start Num: 15

Candidate Starts for QueenBeesly_54:

(Start: 15 @36744 has 104 MA's), (22, 36696), (41, 36579), (74, 36351), (79, 36321), (82, 36306), (83, 36297), (94, 36177),

Gene: Quokka_52 Start: 35786, Stop: 35082, Start Num: 15

Candidate Starts for Quokka_52:

(3, 36119), (10, 35951), (Start: 15 @35786 has 104 MA's), (37, 35639), (65, 35462), (80, 35363), (89, 35303), (98, 35177), (112, 35114),

Gene: Rachaly_53 Start: 37130, Stop: 36387, Start Num: 16

Candidate Starts for Rachaly_53:

(Start: 15 @37133 has 104 MA's), (Start: 16 @37130 has 35 MA's), (25, 37064), (51, 36929), (55, 36878), (61, 36836), (72, 36758), (93, 36611), (96, 36554), (113, 36503), (119, 36473), (124, 36434), (126, 36395),

Gene: Raid_50 Start: 36614, Stop: 35823, Start Num: 13

Candidate Starts for Raid_50:

(Start: 13 @36614 has 155 MA's), (Start: 23 @36560 has 1 MA's), (32, 36479), (59, 36314), (61, 36305), (62, 36299), (68, 36272), (73, 36218), (83, 36164), (92, 36095), (95, 36041), (117, 35909), (120, 35894),

Gene: Rajelicia_50 Start: 36980, Stop: 36165, Start Num: 13

Candidate Starts for Rajelicia_50:

(Start: 13 @36980 has 155 MA's), (Start: 23 @36926 has 1 MA's), (32, 36845), (59, 36680), (61, 36671), (62, 36665), (70, 36587), (80, 36527), (85, 36485), (88, 36473), (92, 36437), (95, 36383), (109, 36290), (117, 36251),

Gene: RedRock_56 Start: 37992, Stop: 37312, Start Num: 15

Candidate Starts for RedRock_56:

(Start: 15 @37992 has 104 MA's), (18, 37974), (43, 37818), (55, 37731), (58, 37710), (65, 37668), (71, 37620), (79, 37569), (93, 37458),

Gene: Refuge_52 Start: 37802, Stop: 37131, Start Num: 16

Candidate Starts for Refuge_52:

(3, 38144), (11, 37967), (Start: 16 @37802 has 35 MA's), (34, 37673), (48, 37622), (49, 37616), (65, 37487), (75, 37412), (93, 37277),

Gene: Retro23_55 Start: 37160, Stop: 36489, Start Num: 15

Candidate Starts for Retro23_55:

(10, 37322), (Start: 15 @37160 has 104 MA's), (34, 37028), (49, 36971), (53, 36950), (65, 36842), (79, 36743), (89, 36680), (93, 36632),

Gene: Rhynn_48 Start: 36257, Stop: 35466, Start Num: 13

Candidate Starts for Rhynn_48:

(Start: 13 @36257 has 155 MA's), (Start: 23 @36203 has 1 MA's), (32, 36122), (59, 35957), (61, 35948), (62, 35942), (68, 35915), (73, 35861), (83, 35807), (92, 35738), (95, 35684), (109, 35591),

(117, 35552), (120, 35537),

Gene: RidgeCB_49 Start: 36166, Stop: 35381, Start Num: 14

Candidate Starts for RidgeCB_49:

(Start: 14 @36166 has 50 MA's), (27, 36079), (29, 36064), (33, 36031), (35, 36028), (45, 35986), (59, 35872), (61, 35863), (62, 35857), (68, 35830), (73, 35776), (83, 35722), (92, 35653), (95, 35599), (109, 35506), (117, 35467), (120, 35452),

Gene: Ringer_50 Start: 37234, Stop: 36497, Start Num: 23

Candidate Starts for Ringer_50:

(Start: 13 @37288 has 155 MA's), (Start: 16 @37273 has 35 MA's), (Start: 23 @37234 has 1 MA's), (32, 37153), (59, 36988), (61, 36979), (62, 36973), (68, 36946), (73, 36892), (83, 36838), (92, 36769), (95, 36715), (117, 36583), (120, 36568),

Gene: Rohr_50 Start: 37000, Stop: 36185, Start Num: 13

Candidate Starts for Rohr_50:

(Start: 13 @37000 has 155 MA's), (Start: 23 @36946 has 1 MA's), (32, 36865), (59, 36700), (61, 36691), (62, 36685), (70, 36607), (80, 36547), (85, 36505), (88, 36493), (92, 36457), (95, 36403), (109, 36310), (117, 36271), (120, 36256),

Gene: Rubeus_49 Start: 34857, Stop: 34042, Start Num: 13

Candidate Starts for Rubeus_49:

(Start: 13 @34857 has 155 MA's), (Start: 16 @34842 has 35 MA's), (Start: 23 @34803 has 1 MA's), (32, 34722), (61, 34548), (62, 34542), (70, 34464), (80, 34404), (85, 34362), (88, 34350), (92, 34314), (95, 34260), (117, 34128), (120, 34113),

Gene: Rufus_50 Start: 36627, Stop: 35812, Start Num: 13

Candidate Starts for Rufus_50:

(Start: 13 @36627 has 155 MA's), (Start: 16 @36612 has 35 MA's), (Start: 23 @36573 has 1 MA's), (32, 36492), (61, 36318), (62, 36312), (68, 36285), (70, 36234), (80, 36174), (85, 36132), (88, 36120), (92, 36084), (95, 36030), (117, 35898), (120, 35883),

Gene: Ruotula_52 Start: 38093, Stop: 37302, Start Num: 13

Candidate Starts for Ruotula_52:

(Start: 13 @38093 has 155 MA's), (28, 37991), (29, 37985), (51, 37877), (61, 37784), (62, 37778), (73, 37697), (76, 37670), (79, 37667), (85, 37622), (88, 37610), (92, 37574), (109, 37427), (120, 37373),

Gene: Rutherferd_51 Start: 37473, Stop: 36682, Start Num: 13

Candidate Starts for Rutherferd_51:

(Start: 13 @37473 has 155 MA's), (Start: 16 @37458 has 35 MA's), (Start: 23 @37419 has 1 MA's), (32, 37338), (59, 37173), (61, 37164), (62, 37158), (68, 37131), (73, 37077), (83, 37023), (92, 36954), (95, 36900), (117, 36768), (120, 36753),

Gene: STLscum_52 Start: 37869, Stop: 37078, Start Num: 13

Candidate Starts for STLscum_52:

(Start: 13 @37869 has 155 MA's), (Start: 23 @37815 has 1 MA's), (32, 37734), (59, 37569), (61, 37560), (62, 37554), (68, 37527), (73, 37473), (83, 37419), (92, 37350), (95, 37296), (109, 37203), (117, 37164), (120, 37149),

Gene: Sagefire_52 Start: 37842, Stop: 37051, Start Num: 13

Candidate Starts for Sagefire_52:

(Start: 13 @37842 has 155 MA's), (28, 37740), (29, 37734), (51, 37626), (61, 37533), (62, 37527), (73, 37446), (76, 37419), (79, 37416), (85, 37371), (88, 37359), (92, 37323), (117, 37137), (120, 37122),

Gene: Salz_52 Start: 35722, Stop: 35030, Start Num: 15

Candidate Starts for Salz_52:

(Start: 15 @35722 has 104 MA's), (18, 35713), (27, 35644), (39, 35572), (78, 35311), (93, 35185),

Gene: Sandaddy_48 Start: 36643, Stop: 35852, Start Num: 13

Candidate Starts for Sandaddy_48:

(Start: 13 @36643 has 155 MA's), (Start: 16 @36628 has 35 MA's), (Start: 23 @36589 has 1 MA's), (32, 36508), (59, 36343), (61, 36334), (62, 36328), (68, 36301), (73, 36247), (76, 36220), (79, 36217), (92, 36124), (95, 36070), (109, 35977), (117, 35938), (120, 35923),

Gene: Sanya_47 Start: 36936, Stop: 36151, Start Num: 14

Candidate Starts for Sanya_47:

(Start: 14 @36936 has 50 MA's), (29, 36834), (33, 36801), (35, 36798), (45, 36756), (59, 36642), (61, 36633), (62, 36627), (68, 36600), (73, 36546), (76, 36519), (79, 36516), (92, 36423), (95, 36369), (109, 36276), (117, 36237), (120, 36222),

Gene: SarFire_47 Start: 36194, Stop: 35403, Start Num: 13

Candidate Starts for SarFire_47:

(Start: 13 @36194 has 155 MA's), (Start: 23 @36140 has 1 MA's), (32, 36059), (59, 35894), (61, 35885), (62, 35879), (68, 35852), (73, 35798), (83, 35744), (92, 35675), (95, 35621), (109, 35528), (117, 35489), (120, 35474),

Gene: Scowl_50 Start: 37130, Stop: 36339, Start Num: 13

Candidate Starts for Scowl_50:

(Start: 13 @37130 has 155 MA's), (Start: 23 @37076 has 1 MA's), (32, 36995), (59, 36830), (61, 36821), (62, 36815), (68, 36788), (73, 36734), (83, 36680), (92, 36611), (95, 36557), (109, 36464), (117, 36425), (120, 36410),

Gene: Seabiscuit_52 Start: 36733, Stop: 35942, Start Num: 13

Candidate Starts for Seabiscuit_52:

(Start: 13 @36733 has 155 MA's), (28, 36631), (29, 36625), (37, 36580), (51, 36517), (61, 36424), (80, 36304), (85, 36262), (88, 36250), (92, 36214), (109, 36067), (117, 36028), (120, 36013),

Gene: Seanderson_51 Start: 37551, Stop: 36742, Start Num: 14

Candidate Starts for Seanderson_51:

(Start: 14 @37551 has 50 MA's), (29, 37449), (33, 37416), (35, 37413), (45, 37371), (59, 37257), (61, 37248), (62, 37242), (70, 37164), (80, 37104), (85, 37062), (88, 37050), (92, 37014), (109, 36867), (117, 36828), (120, 36813),

Gene: SemperFi_55 Start: 37012, Stop: 36320, Start Num: 15

Candidate Starts for SemperFi_55:

(1, 37513), (Start: 15 @37012 has 104 MA's), (22, 36964), (41, 36847), (74, 36619), (79, 36589), (82, 36574), (83, 36565), (94, 36445),

Gene: Serenity_54 Start: 35976, Stop: 35272, Start Num: 15

Candidate Starts for Serenity_54:

(9, 36150), (Start: 15 @35976 has 104 MA's), (80, 35553), (89, 35493), (98, 35367), (112, 35304),

Gene: Sham4_53 Start: 35750, Stop: 35058, Start Num: 15

Candidate Starts for Sham4_53:

(Start: 15 @35750 has 104 MA's), (18, 35741), (27, 35672), (39, 35600), (78, 35339), (93, 35213),

Gene: ShortQueendom_43 Start: 32707, Stop: 31916, Start Num: 13

Candidate Starts for ShortQueendom_43:

(Start: 13 @32707 has 155 MA's), (Start: 23 @32653 has 1 MA's), (32, 32572), (59, 32407), (61, 32398), (62, 32392), (68, 32365), (73, 32311), (83, 32257), (92, 32188), (95, 32134), (117, 32002), (120, 31987),

Gene: Sibs6_50 Start: 35458, Stop: 34673, Start Num: 14

Candidate Starts for Sibs6_50:

(Start: 14 @35458 has 50 MA's), (29, 35356), (33, 35323), (35, 35320), (45, 35278), (59, 35164), (61, 35155), (68, 35122), (73, 35068), (92, 34945), (95, 34891), (109, 34798), (117, 34759), (120, 34744),

Gene: SkiPole_54 Start: 37590, Stop: 36799, Start Num: 13

Candidate Starts for SkiPole_54:

(Start: 13 @37590 has 155 MA's), (Start: 23 @37536 has 1 MA's), (32, 37455), (59, 37290), (61, 37281), (62, 37275), (68, 37248), (73, 37194), (83, 37140), (92, 37071), (95, 37017), (109, 36924), (117, 36885), (120, 36870),

Gene: Sknot_56 Start: 36812, Stop: 36117, Start Num: 15

Candidate Starts for Sknot_56:

(7, 37019), (Start: 15 @36812 has 104 MA's), (41, 36650), (54, 36590), (65, 36491), (74, 36422), (78, 36395), (82, 36377), (93, 36275),

Gene: Slagathor_51 Start: 36881, Stop: 36090, Start Num: 13

Candidate Starts for Slagathor_51:

(Start: 13 @36881 has 155 MA's), (28, 36779), (29, 36773), (51, 36665), (61, 36572), (62, 36566), (73, 36485), (76, 36458), (79, 36455), (85, 36410), (88, 36398), (92, 36362), (109, 36215), (117, 36176), (120, 36161),

Gene: Smairt_51 Start: 37162, Stop: 36377, Start Num: 14

Candidate Starts for Smairt_51:

(Start: 14 @37162 has 50 MA's), (29, 37060), (33, 37027), (35, 37024), (45, 36982), (59, 36868), (61, 36859), (62, 36853), (68, 36826), (73, 36772), (76, 36745), (79, 36742), (92, 36649), (95, 36595), (109, 36502), (117, 36463), (120, 36448),

Gene: Smeagan_57 Start: 37473, Stop: 36787, Start Num: 15

Candidate Starts for Smeagan_57:

(1, 37974), (10, 37635), (Start: 15 @37473 has 104 MA's), (42, 37302), (45, 37290), (47, 37284), (64, 37152), (74, 37083),

Gene: Smeagol_51 Start: 38091, Stop: 37276, Start Num: 13

Candidate Starts for Smeagol_51:

(Start: 13 @38091 has 155 MA's), (Start: 16 @38076 has 35 MA's), (Start: 23 @38037 has 1 MA's), (32, 37956), (61, 37782), (62, 37776), (70, 37698), (92, 37548), (109, 37401), (117, 37362), (120, 37347),

Gene: SnapTap_54 Start: 36823, Stop: 36131, Start Num: 15

Candidate Starts for SnapTap_54:

(1, 37324), (Start: 15 @36823 has 104 MA's), (22, 36775), (41, 36658), (74, 36430), (79, 36400), (82, 36385), (83, 36376), (94, 36256),

Gene: Snape_53 Start: 35742, Stop: 35050, Start Num: 15

Candidate Starts for Snape_53:

(Start: 15 @35742 has 104 MA's), (18, 35733), (27, 35664), (39, 35592), (78, 35331), (93, 35205),

Gene: Snazzy_48 Start: 36267, Stop: 35476, Start Num: 13

Candidate Starts for Snazzy_48:

(Start: 13 @36267 has 155 MA's), (Start: 23 @36213 has 1 MA's), (32, 36132), (59, 35967), (61, 35958), (62, 35952), (68, 35925), (73, 35871), (83, 35817), (92, 35748), (95, 35694), (109, 35601), (117, 35562), (120, 35547),

Gene: Solon_48 Start: 36525, Stop: 35734, Start Num: 13

Candidate Starts for Solon_48:

(Start: 13 @36525 has 155 MA's), (28, 36423), (29, 36417), (51, 36309), (61, 36216), (62, 36210), (85, 36054), (88, 36042), (92, 36006), (109, 35859), (117, 35820), (120, 35805),

Gene: SororFago_56 Start: 37846, Stop: 37094, Start Num: 16

Candidate Starts for SororFago_56:

(Start: 16 @37846 has 35 MA's), (27, 37768), (43, 37681), (49, 37660), (51, 37645), (64, 37537), (65, 37531), (79, 37432), (85, 37387), (93, 37321),

Gene: Sorpresa_48 Start: 36645, Stop: 35854, Start Num: 13

Candidate Starts for Sorpresa_48:

(Start: 13 @36645 has 155 MA's), (Start: 16 @36630 has 35 MA's), (Start: 23 @36591 has 1 MA's), (32, 36510), (59, 36345), (61, 36336), (62, 36330), (68, 36303), (73, 36249), (76, 36222), (79, 36219), (92, 36126), (95, 36072), (109, 35979), (117, 35940), (120, 35925),

Gene: SpikeBT_49 Start: 36885, Stop: 36094, Start Num: 13

Candidate Starts for SpikeBT_49:

(Start: 13 @36885 has 155 MA's), (Start: 16 @36870 has 35 MA's), (Start: 23 @36831 has 1 MA's), (32, 36750), (59, 36585), (61, 36576), (62, 36570), (68, 36543), (73, 36489), (76, 36462), (79, 36459), (92, 36366), (95, 36312), (109, 36219), (117, 36180), (120, 36165),

Gene: Squee_50 Start: 37222, Stop: 36431, Start Num: 13

Candidate Starts for Squee_50:

(Start: 13 @37222 has 155 MA's), (Start: 23 @37168 has 1 MA's), (32, 37087), (59, 36922), (61, 36913), (62, 36907), (68, 36880), (73, 36826), (83, 36772), (92, 36703), (109, 36556), (117, 36517), (120, 36502),

Gene: StarStuff_56 Start: 36634, Stop: 35927, Start Num: 15

Candidate Starts for StarStuff_56:

(Start: 15 @36634 has 104 MA's), (19, 36607), (22, 36586), (41, 36469), (65, 36310), (79, 36211), (82, 36196), (94, 36067), (98, 36022),

Gene: Steamy_50 Start: 36314, Stop: 35643, Start Num: 16

Candidate Starts for Steamy_50:

(3, 36650), (Start: 16 @36314 has 35 MA's), (27, 36236), (34, 36185), (43, 36149), (60, 36023), (65, 35999), (77, 35903), (93, 35789), (102, 35705),

Gene: StewieG_48 Start: 34045, Stop: 33254, Start Num: 13

Candidate Starts for StewieG_48:

(Start: 13 @34045 has 155 MA's), (Start: 23 @33991 has 1 MA's), (32, 33910), (59, 33745), (61, 33736), (62, 33730), (68, 33703), (73, 33649), (83, 33595), (92, 33526), (95, 33472), (109, 33379), (117, 33340), (120, 33325),

Gene: StrongArm_49 Start: 37728, Stop: 36937, Start Num: 13

Candidate Starts for StrongArm_49:

(Start: 13 @37728 has 155 MA's), (Start: 23 @37674 has 1 MA's), (32, 37593), (59, 37428), (61, 37419), (62, 37413), (68, 37386), (73, 37332), (83, 37278), (92, 37209), (95, 37155), (117, 37023), (120, 37008),

Gene: Sumter_46 Start: 36230, Stop: 35439, Start Num: 13

Candidate Starts for Sumter_46:

(Start: 13 @36230 has 155 MA's), (Start: 23 @36176 has 1 MA's), (32, 36095), (59, 35930), (61, 35921), (62, 35915), (73, 35834), (83, 35780), (92, 35711), (117, 35525), (120, 35510),

Gene: Sunhee_57 Start: 36270, Stop: 35515, Start Num: 16

Candidate Starts for Sunhee_57:

(Start: 16 @36270 has 35 MA's), (27, 36192), (49, 36084), (51, 36069), (52, 36066), (61, 35976), (64, 35961), (65, 35955), (72, 35895), (80, 35853), (84, 35820), (93, 35745), (96, 35688), (101, 35670), (114, 35619), (126, 35523),

Gene: Sunshine924_50 Start: 36142, Stop: 35357, Start Num: 14

Candidate Starts for Sunshine924_50:

(Start: 14 @36142 has 50 MA's), (29, 36040), (33, 36007), (35, 36004), (45, 35962), (61, 35839), (62, 35833), (68, 35806), (73, 35752), (76, 35725), (79, 35722), (92, 35629), (95, 35575), (109, 35482), (117, 35443), (120, 35428),

Gene: Superchunk_52 Start: 35279, Stop: 34578, Start Num: 15

Candidate Starts for Superchunk_52:

(3, 35612), (Start: 15 @35279 has 104 MA's), (18, 35261), (22, 35234), (24, 35213), (41, 35117), (43, 35108), (57, 35006), (65, 34958), (80, 34859), (97, 34676),

Gene: SweetiePie_54 Start: 36955, Stop: 36263, Start Num: 15

Candidate Starts for SweetiePie_54:

(1, 37456), (Start: 15 @36955 has 104 MA's), (22, 36907), (41, 36790), (74, 36562), (79, 36532), (82, 36517), (83, 36508), (94, 36388),

Gene: SwirlSquare_59 Start: 36144, Stop: 35443, Start Num: 15

Candidate Starts for SwirlSquare_59:

(Start: 15 @36144 has 104 MA's), (18, 36126), (22, 36099), (41, 35982), (56, 35874), (73, 35757), (80, 35724), (97, 35541), (112, 35475),

Gene: SwissCheese_51 Start: 36855, Stop: 36070, Start Num: 14

Candidate Starts for SwissCheese_51:

(Start: 14 @36855 has 50 MA's), (27, 36768), (29, 36753), (33, 36720), (35, 36717), (45, 36675), (59, 36561), (61, 36552), (62, 36546), (68, 36519), (73, 36465), (83, 36411), (92, 36342), (95, 36288), (109, 36195), (117, 36156), (120, 36141),

Gene: Switzer_51 Start: 36802, Stop: 36011, Start Num: 13

Candidate Starts for Switzer_51:

(Start: 13 @36802 has 155 MA's), (Start: 16 @36787 has 35 MA's), (32, 36667), (59, 36502), (61, 36493), (62, 36487), (68, 36460), (73, 36406), (83, 36352), (92, 36283), (95, 36229), (109, 36136), (117, 36097), (120, 36082),

Gene: Swole_50 Start: 36024, Stop: 35239, Start Num: 14

Candidate Starts for Swole_50:

(Start: 14 @36024 has 50 MA's), (29, 35922), (33, 35889), (35, 35886), (45, 35844), (59, 35730), (61, 35721), (62, 35715), (68, 35688), (73, 35634), (83, 35580), (92, 35511), (95, 35457), (109, 35364), (117, 35325), (120, 35310),

Gene: Target_50 Start: 35434, Stop: 34643, Start Num: 13

Candidate Starts for Target_50:

(Start: 13 @35434 has 155 MA's), (Start: 23 @35380 has 1 MA's), (32, 35299), (59, 35134), (61, 35125), (62, 35119), (68, 35092), (73, 35038), (83, 34984), (92, 34915), (95, 34861), (109, 34768), (117, 34729), (120, 34714),

Gene: TarsusIV_53 Start: 36780, Stop: 36112, Start Num: 16

Candidate Starts for TarsusIV_53:

(Start: 16 @36780 has 35 MA's), (22, 36744), (54, 36564), (65, 36465), (75, 36390), (89, 36303), (93, 36255),

Gene: Tasp14_51 Start: 37127, Stop: 36336, Start Num: 13

Candidate Starts for Tasp14_51:

(Start: 13 @37127 has 155 MA's), (Start: 16 @37112 has 35 MA's), (Start: 23 @37073 has 1 MA's), (32, 36992), (59, 36827), (61, 36818), (62, 36812), (68, 36785), (73, 36731), (83, 36677), (92, 36608), (117, 36422), (120, 36407),

Gene: Teodoridan_48 Start: 36321, Stop: 35530, Start Num: 13

Candidate Starts for Teodoridan_48:

(Start: 13 @36321 has 155 MA's), (Start: 23 @36267 has 1 MA's), (32, 36186), (59, 36021), (61, 36012), (62, 36006), (68, 35979), (73, 35925), (83, 35871), (92, 35802), (95, 35748), (109, 35655), (117, 35616), (120, 35601),

Gene: Terrific_57 Start: 37166, Stop: 36471, Start Num: 15

Candidate Starts for Terrific_57:

(7, 37373), (Start: 15 @37166 has 104 MA's), (41, 37004), (54, 36944), (65, 36845), (74, 36776), (78, 36749), (82, 36731), (93, 36629),

Gene: TheloniousMonk_50 Start: 37889, Stop: 37098, Start Num: 13

Candidate Starts for TheloniousMonk_50:

(Start: 13 @37889 has 155 MA's), (28, 37787), (29, 37781), (51, 37673), (61, 37580), (62, 37574), (85, 37418), (88, 37406), (92, 37370), (117, 37184), (120, 37169),

Gene: Thor_47 Start: 35552, Stop: 34761, Start Num: 13

Candidate Starts for Thor_47:

(Start: 13 @35552 has 155 MA's), (Start: 23 @35498 has 1 MA's), (32, 35417), (59, 35252), (61, 35243), (62, 35237), (68, 35210), (73, 35156), (83, 35102), (92, 35033), (95, 34979), (109, 34886), (117, 34847), (120, 34832),

Gene: Timothy_53 Start: 35719, Stop: 35027, Start Num: 15

Candidate Starts for Timothy_53:

(Start: 15 @35719 has 104 MA's), (18, 35710), (27, 35641), (39, 35569), (78, 35308), (93, 35182),

Gene: TinyTimmy_53 Start: 35768, Stop: 35076, Start Num: 15

Candidate Starts for TinyTimmy_53:

(Start: 15 @35768 has 104 MA's), (18, 35759), (27, 35690), (39, 35618), (78, 35357), (93, 35231),

Gene: TipsytheTRex_50 Start: 36046, Stop: 35342, Start Num: 15

Candidate Starts for TipsytheTRex_50:

(9, 36220), (Start: 15 @36046 has 104 MA's), (80, 35623), (89, 35563), (98, 35437), (112, 35374),

Gene: Tomathan_56 Start: 36631, Stop: 35924, Start Num: 15

Candidate Starts for Tomathan_56:

(4, 36916), (Start: 15 @36631 has 104 MA's), (19, 36604), (22, 36583), (41, 36466), (65, 36307), (79, 36208), (82, 36193), (94, 36064), (98, 36019),

Gene: Topgun_49 Start: 36413, Stop: 35622, Start Num: 13

Candidate Starts for Topgun_49:

(Start: 13 @36413 has 155 MA's), (Start: 23 @36359 has 1 MA's), (32, 36278), (59, 36113), (61, 36104), (62, 36098), (68, 36071), (73, 36017), (83, 35963), (92, 35894), (95, 35840), (109, 35747), (117, 35708), (120, 35693),

Gene: Tote_45 Start: 33291, Stop: 32506, Start Num: 14

Candidate Starts for Tote_45:

(Start: 14 @33291 has 50 MA's), (29, 33189), (33, 33156), (35, 33153), (45, 33111), (59, 32997), (61, 32988), (62, 32982), (68, 32955), (73, 32901), (83, 32847), (92, 32778), (95, 32724), (109, 32631), (117, 32592), (120, 32577),

Gene: Traft412_52 Start: 37748, Stop: 36933, Start Num: 13

Candidate Starts for Traft412_52:

(Start: 13 @37748 has 155 MA's), (Start: 16 @37733 has 35 MA's), (Start: 23 @37694 has 1 MA's), (32, 37613), (59, 37448), (61, 37439), (62, 37433), (70, 37355), (80, 37295), (85, 37253), (88, 37241), (92, 37205), (117, 37019), (120, 37004),

Gene: Travvers_56 Start: 36631, Stop: 35924, Start Num: 15

Candidate Starts for Travvers_56:

(Start: 15 @36631 has 104 MA's), (19, 36604), (22, 36583), (41, 36466), (65, 36307), (79, 36208), (82, 36193), (94, 36064), (98, 36019),

Gene: Treddle_50 Start: 37502, Stop: 36711, Start Num: 13

Candidate Starts for Treddle_50:

(Start: 13 @37502 has 155 MA's), (Start: 16 @37487 has 35 MA's), (32, 37367), (59, 37202), (61, 37193), (62, 37187), (73, 37106), (83, 37052), (92, 36983), (109, 36836), (117, 36797), (120, 36782),

Gene: Tripl3t_49 Start: 37173, Stop: 36382, Start Num: 13

Candidate Starts for Tripl3t_49:

(Start: 13 @37173 has 155 MA's), (Start: 16 @37158 has 35 MA's), (Start: 23 @37119 has 1 MA's), (32, 37038), (59, 36873), (61, 36864), (62, 36858), (68, 36831), (73, 36777), (83, 36723), (92, 36654), (109, 36507), (117, 36468), (120, 36453),

Gene: Tristan_52 Start: 37836, Stop: 37111, Start Num: 16

Candidate Starts for Tristan_52:

(6, 38070), (Start: 16 @37836 has 35 MA's), (27, 37758), (34, 37707), (42, 37677), (45, 37665), (64, 37527), (65, 37521), (74, 37452), (79, 37422), (85, 37377), (90, 37341), (93, 37311), (96, 37254), (113, 37203),

Gene: Trixie_52 Start: 36877, Stop: 36206, Start Num: 16

Candidate Starts for Trixie_52:

(Start: 16 @36877 has 35 MA's), (54, 36661), (79, 36463), (93, 36352),

Gene: Trooper_55 Start: 37171, Stop: 36485, Start Num: 15

Candidate Starts for Trooper_55:

(Start: 15 @37171 has 104 MA's), (18, 37153), (22, 37126), (Start: 23 @37123 has 1 MA's), (54, 36949), (65, 36850), (73, 36784), (74, 36781), (78, 36754), (93, 36634), (110, 36520),

Gene: Trouble_52 Start: 38244, Stop: 37459, Start Num: 14

Candidate Starts for Trouble_52:

(Start: 14 @38244 has 50 MA's), (29, 38142), (33, 38109), (35, 38106), (45, 38064), (59, 37950), (61, 37941), (62, 37935), (68, 37908), (73, 37854), (92, 37731), (95, 37677), (109, 37584), (117, 37545), (120, 37530),

Gene: Turbido_55 Start: 37207, Stop: 36521, Start Num: 15

Candidate Starts for Turbido_55:

(Start: 15 @37207 has 104 MA's), (42, 37036), (45, 37024), (47, 37018), (64, 36886), (74, 36817), (98, 36601),

Gene: Turj99_48 Start: 36141, Stop: 35350, Start Num: 13

Candidate Starts for Turj99_48:

(Start: 13 @36141 has 155 MA's), (Start: 23 @36087 has 1 MA's), (32, 36006), (59, 35841), (61, 35832), (62, 35826), (68, 35799), (73, 35745), (83, 35691), (92, 35622), (95, 35568), (109, 35475), (117, 35436), (120, 35421),

Gene: TwoPeat_50 Start: 36615, Stop: 35830, Start Num: 14

Candidate Starts for TwoPeat_50:

(Start: 14 @36615 has 50 MA's), (29, 36513), (33, 36480), (35, 36477), (45, 36435), (59, 36321), (61, 36312), (62, 36306), (68, 36279), (73, 36225), (83, 36171), (92, 36102), (95, 36048), (109, 35955), (117, 35916), (120, 35901),

Gene: U2_49 Start: 36782, Stop: 35991, Start Num: 13

Candidate Starts for U2_49:

(Start: 13 @36782 has 155 MA's), (28, 36680), (29, 36674), (37, 36629), (51, 36566), (61, 36473), (80, 36353), (85, 36311), (88, 36299), (92, 36263), (109, 36116), (117, 36077), (120, 36062),

Gene: Updawg_55 Start: 37053, Stop: 36358, Start Num: 15

Candidate Starts for Updawg_55:

(7, 37260), (Start: 15 @37053 has 104 MA's), (41, 36891), (54, 36831), (65, 36732), (74, 36663), (78, 36636), (82, 36618), (93, 36516),

Gene: VA6_55 Start: 37267, Stop: 36506, Start Num: 15

Candidate Starts for VA6_55:

(10, 37432), (Start: 15 @37267 has 104 MA's), (Start: 23 @37213 has 1 MA's), (31, 37132), (64, 36946), (65, 36940), (80, 36850), (105, 36634), (121, 36553), (125, 36514),

Gene: VC3_57 Start: 37029, Stop: 36343, Start Num: 15

Candidate Starts for VC3_57:

(Start: 15 @37029 has 104 MA's), (34, 36897), (45, 36855), (48, 36846), (49, 36840), (55, 36774), (64, 36717), (65, 36711), (93, 36504),

Gene: Violet_47 Start: 36559, Stop: 35768, Start Num: 13

Candidate Starts for Violet_47:

(Start: 13 @36559 has 155 MA's), (Start: 16 @36544 has 35 MA's), (Start: 23 @36505 has 1 MA's), (32, 36424), (59, 36259), (61, 36250), (62, 36244), (68, 36217), (73, 36163), (83, 36109), (92, 36040), (95, 35986), (109, 35893), (117, 35854), (120, 35839),

Gene: Watermelon_50 Start: 36951, Stop: 36160, Start Num: 13

Candidate Starts for Watermelon_50:

(Start: 13 @36951 has 155 MA's), (Start: 16 @36936 has 35 MA's), (Start: 23 @36897 has 1 MA's), (32, 36816), (59, 36651), (61, 36642), (62, 36636), (73, 36555), (83, 36501), (92, 36432), (95, 36378),

(109, 36285), (117, 36246), (120, 36231),

Gene: WeiHuaDA_56 Start: 37682, Stop: 37011, Start Num: 16

Candidate Starts for WeiHuaDA_56:

(Start: 16 @37682 has 35 MA's), (54, 37466), (71, 37319), (79, 37268), (83, 37244), (90, 37187), (93, 37157), (102, 37073),

Gene: Whabigail7_55 Start: 37192, Stop: 36506, Start Num: 15

Candidate Starts for Whabigail7_55:

(Start: 15 @37192 has 104 MA's), (42, 37021), (45, 37009), (47, 37003), (50, 36991), (64, 36871), (74, 36802),

Gene: Wheeler_50 Start: 36995, Stop: 36204, Start Num: 13

Candidate Starts for Wheeler_50:

(Start: 13 @36995 has 155 MA's), (28, 36893), (29, 36887), (51, 36779), (61, 36686), (73, 36599), (76, 36572), (79, 36569), (85, 36524), (88, 36512), (92, 36476), (109, 36329), (117, 36290), (120, 36275),

Gene: WideWale_55 Start: 37053, Stop: 36358, Start Num: 15

Candidate Starts for WideWale_55:

(7, 37260), (Start: 15 @37053 has 104 MA's), (41, 36891), (54, 36831), (65, 36732), (74, 36663), (78, 36636), (82, 36618), (93, 36516),

Gene: Wilkins_49 Start: 36343, Stop: 35552, Start Num: 13

Candidate Starts for Wilkins_49:

(Start: 13 @36343 has 155 MA's), (Start: 23 @36289 has 1 MA's), (32, 36208), (59, 36043), (61, 36034), (62, 36028), (68, 36001), (73, 35947), (83, 35893), (92, 35824), (95, 35770), (109, 35677), (117, 35638), (120, 35623),

Gene: XianYue_53 Start: 36548, Stop: 35871, Start Num: 15

Candidate Starts for XianYue_53:

(10, 36713), (Start: 15 @36548 has 104 MA's), (Start: 23 @36506 has 1 MA's), (38, 36407), (41, 36392), (54, 36332), (65, 36233), (74, 36161), (78, 36134), (93, 36020),

Gene: Yecey3_55 Start: 36455, Stop: 35679, Start Num: 16

Candidate Starts for Yecey3_55:

(Start: 16 @36455 has 35 MA's), (25, 36389), (29, 36362), (43, 36290), (49, 36269), (51, 36254), (93, 35930), (96, 35873), (107, 35825), (109, 35810), (119, 35765), (126, 35687),

Gene: Zeeculate_47 Start: 36604, Stop: 35813, Start Num: 13

Candidate Starts for Zeeculate_47:

(Start: 13 @36604 has 155 MA's), (Start: 16 @36589 has 35 MA's), (Start: 23 @36550 has 1 MA's), (32, 36469), (59, 36304), (61, 36295), (62, 36289), (73, 36208), (83, 36154), (92, 36085), (109, 35938), (117, 35899), (120, 35884),

Gene: Zephyr_49 Start: 36444, Stop: 35653, Start Num: 13

Candidate Starts for Zephyr_49:

(Start: 13 @36444 has 155 MA's), (Start: 16 @36429 has 35 MA's), (Start: 23 @36390 has 1 MA's), (32, 36309), (59, 36144), (61, 36135), (62, 36129), (68, 36102), (73, 36048), (83, 35994), (92, 35925), (95, 35871), (109, 35778), (117, 35739), (120, 35724),

Gene: Zeuska_48 Start: 36535, Stop: 35744, Start Num: 13

Candidate Starts for Zeuska_48:

(Start: 13 @36535 has 155 MA's), (Start: 23 @36481 has 1 MA's), (32, 36400), (59, 36235), (61, 36226), (62, 36220), (68, 36193), (73, 36139), (83, 36085), (92, 36016), (95, 35962), (109, 35869), (117, 35830), (120, 35815),

Gene: Zimmer_51 Start: 37492, Stop: 36821, Start Num: 16

Candidate Starts for Zimmer_51:

(Start: 16 @37492 has 35 MA's), (43, 37327), (49, 37306), (51, 37291), (65, 37177), (73, 37111), (74, 37108), (79, 37078), (93, 36967),