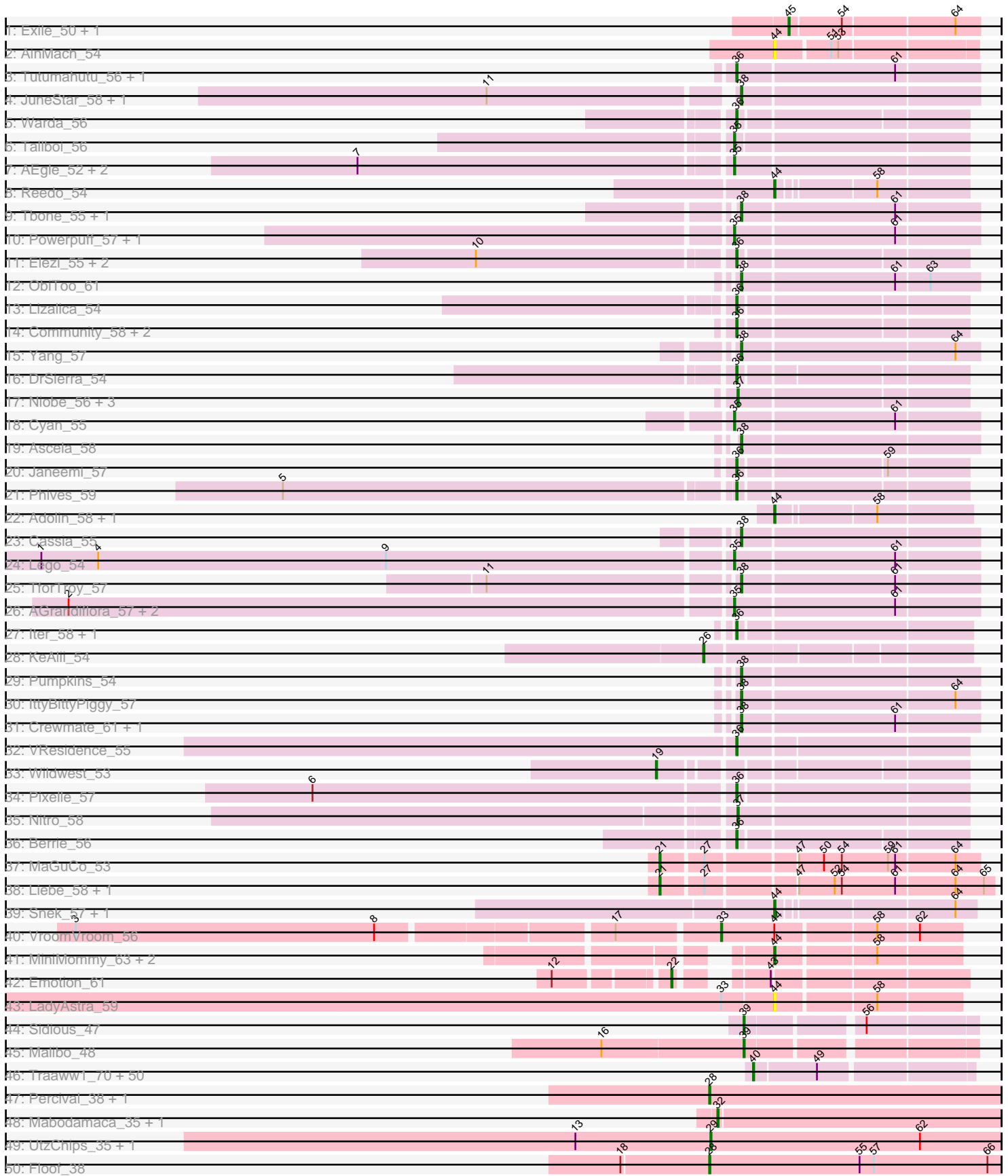
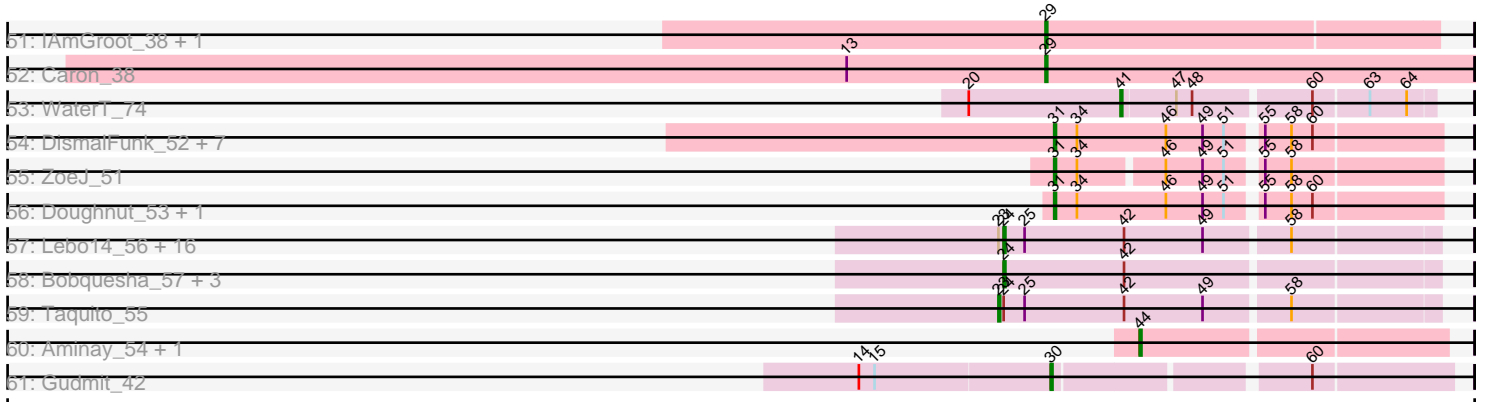


Pham 222926



Pham 222926



Note: Tracks are now grouped by subcluster and scaled. Switching in subcluster is indicated by changes in track color. Track scale is now set by default to display the region 30 bp upstream of start 1 to 30 bp downstream of the last possible start. If this default region is judged to be packed too tightly with annotated starts, the track will be further scaled to only show that region of the ORF with annotated starts. This action will be indicated by adding "Zoomed" to the title. For starts, yellow indicates the location of called starts comprised solely of Glimmer/GeneMark auto-annotations, green indicates the location of called starts with at least 1 manual gene annotation.

Pham 222926 Report

This analysis was run 03/28/25 on database version 593.

Pham number 222926 has 166 members, 21 are drafts.

Phages represented in each track:

- Track 1 : Exile_50, Soondubu_51
- Track 2 : AinMach_54
- Track 3 : Tutumahutu_56, Kaylissa_56
- Track 4 : JuneStar_58, Shaffner_54
- Track 5 : Warda_56
- Track 6 : Tallboi_56
- Track 7 : AEgle_52, Turab_53, Adumb2043_53
- Track 8 : Reedo_54
- Track 9 : Tbone_55, Mudpuppy_52
- Track 10 : Powerpuff_57, YesChef_55
- Track 11 : Elezi_55, Subaru_56, Jstan_57
- Track 12 : ObiToo_61
- Track 13 : Lizalica_54
- Track 14 : Community_58, Amyev_57, Tian_56
- Track 15 : Yang_57
- Track 16 : DrSierra_54
- Track 17 : Niobe_56, Asa16_56, Eraser_56, London_56
- Track 18 : Cyan_55
- Track 19 : Ascela_58
- Track 20 : Janeemi_57
- Track 21 : Phives_59
- Track 22 : Adolin_58, DrManhattan_58
- Track 23 : Cassia_55
- Track 24 : Lego_54
- Track 25 : TforTroy_57
- Track 26 : AGrandiflora_57, Joemato_55, Simpson_57
- Track 27 : Iter_58, Tuck_58
- Track 28 : KeAlii_54
- Track 29 : Pumpkins_54
- Track 30 : IttyBittyPiggy_57
- Track 31 : Crewmate_61, JohnDoe_55
- Track 32 : VResidence_55
- Track 33 : Wildwest_53
- Track 34 : Pixelle_57
- Track 35 : Nitro_58
- Track 36 : Berrie_56
- Track 37 : MaGuCo_53

- Track 38 : Liebe_58, Maureen_58
- Track 39 : Snek_57, Tweety19_58
- Track 40 : VroomVroom_56
- Track 41 : MiniMommy_63, ShakeltOph_62, JasmineDragon_60
- Track 42 : Emotion_61
- Track 43 : LadyAstra_59
- Track 44 : Sidious_47
- Track 45 : Malibo_48
- Track 46 : Traaww1_70, Barbarian_73, Mosby_70, Thresher_76, Lilac_76, Filch_75, Miniwave_69, Phaux_76, YassJohnny_71, Tomaszewski_69, Pumpkin_77, Czyszczon1_75, Adnama_78, Sassay_69, RiverMonster_74, BigBubba_74, Phrux_71, Lilizi_75, Hopey_74, Youngblood_77, Elph10_74, MPhalcon_75, Terminus_77, Murphy_74, Pharsalus_71, Bench_77, Gator_72, Stark_75, PhatBacter_78, BugsBunny_74, Maxxinista_76, Misfit_75, Contagion_70, MISSy_75, Moldemort_77, Tarkin_73, Asriel_73, Phaja_72, Palpatine_76, Bruin_71, Wiggin_76, Xandras_73, Policronamos_77, HanKaySha_74, Becksu_73, Rakim_75, DrDrey_74, Paperbeatsrock_73, Thimble_76, StellaBean_72, Willez_69
- Track 47 : Percival_38, Gretchen_38
- Track 48 : Mabodamaca_35, SuMoo_35
- Track 49 : UtzChips_35, Barnstormer_35
- Track 50 : Floof_38
- Track 51 : IAmGroot_38, GardenState_38
- Track 52 : Caron_38
- Track 53 : WaterT_74
- Track 54 : DismalFunk_52, Findley_52, DismalStressor_52, Milly_52, Strobilo_52, TM4_47, BoostSeason_52, Marcoliusprime_52
- Track 55 : ZoeJ_51
- Track 56 : Doughnut_53, Mufasa_52
- Track 57 : Lebo14_56, SamScheppers_53, Fionnbharth_55, Juliette_57, Cheetobro_55, Slarp_55, JF1_55, Wintermute_55, Y10_54, OmniCritical_54, Eponine_57, Ruthiejr_56, Malthus_56, Y2_54, Mitti_55, Chancellor_55, Kraw_56
- Track 58 : Bobquesha_57, Patt_52, Reptar3000_53, MissDaisy_53
- Track 59 : Taquito_55
- Track 60 : Aminay_54, MissSwiss_57
- Track 61 : Gudmit_42

Summary of Final Annotations (See graph section above for start numbers):

The start number called the most often in the published annotations is 40, it was called in 48 of the 145 non-draft genes in the pham.

Genes that call this "Most Annotated" start:

- Adnama_78, Asriel_73, Barbarian_73, Becksu_73, Bench_77, BigBubba_74, Bruin_71, BugsBunny_74, Contagion_70, Czyszczon1_75, DrDrey_74, Elph10_74, Filch_75, Gator_72, HanKaySha_74, Hopey_74, Lilac_76, Lilizi_75, MISSy_75, MPhalcon_75, Maxxinista_76, Miniwave_69, Misfit_75, Moldemort_77, Mosby_70, Murphy_74, Palpatine_76, Paperbeatsrock_73, Phaja_72, Pharsalus_71, PhatBacter_78, Phaux_76, Phrux_71, Policronamos_77, Pumpkin_77, Rakim_75, RiverMonster_74, Sassay_69, Stark_75, StellaBean_72, Tarkin_73, Terminus_77, Thimble_76, Thresher_76, Tomaszewski_69, Traaww1_70, Wiggin_76, Willez_69,

Xandras_73, YassJohnny_71, Youngblood_77,

Genes that have the "Most Annotated" start but do not call it:

-

Genes that do not have the "Most Annotated" start:

- AEgle_52, AGrandiflora_57, Adolin_58, Adumb2043_53, AinMach_54, Aminay_54, Amyev_57, Asa16_56, Ascela_58, Barnstormer_35, Berrie_56, Bobquesha_57, BoostSeason_52, Caron_38, Cassia_55, Chancellor_55, Cheetobro_55, Community_58, Crewmate_61, Cyan_55, DismalFunk_52, DismalStressor_52, Doughnut_53, DrManhattan_58, DrSierra_54, Elezi_55, Emotion_61, Eponine_57, Eraser_56, Exile_50, Findley_52, Fionnbharth_55, Floof_38, GardenState_38, Gretchen_38, Gudmit_42, IAmGroot_38, Iter_58, IttyBittyPiggy_57, JF1_55, Janeemi_57, JasmineDragon_60, Joemato_55, JohnDoe_55, Jstan_57, Juliette_57, JuneStar_58, Kaylissa_56, KeAlii_54, Kraw_56, LadyAstra_59, Lebo14_56, Lego_54, Liebe_58, Lizalica_54, London_56, MaGuCo_53, Mabodamaca_35, Malibo_48, Malthus_56, Marcoliusprime_52, Maureen_58, Milly_52, MiniMommy_63, MissDaisy_53, MissSwiss_57, Mitti_55, Mudpuppy_52, Mufasa_52, Niobe_56, Nitro_58, ObiToo_61, OmniCritical_54, Patt_52, Percival_38, Phives_59, Pixelle_57, Powerpuff_57, Pumpkins_54, Reedo_54, Reptar3000_53, Ruthiejr_56, SamScheppers_53, Shaffner_54, ShakeltOph_62, Sidious_47, Simpson_57, Slarp_55, Snek_57, Soondubu_51, Strobilo_52, SuMoo_35, Subaru_56, TM4_47, Tallboi_56, Taquito_55, Tbone_55, TforTroy_57, Tian_56, Tuck_58, Turab_53, Tutumahutu_56, Tweety19_58, UtzChips_35, VResidence_55, VroomVroom_56, Warda_56, WaterT_74, Wildwest_53, Wintermute_55, Y10_54, Y2_54, Yang_57, YesChef_55, ZoeJ_51,

Summary by start number:

Start 19:

- Found in 1 of 166 (0.6%) of genes in pham
- Manual Annotations of this start: 1 of 145
- Called 100.0% of time when present
- Phage (with cluster) where this start called: Wildwest_53 (AZ1),

Start 21:

- Found in 3 of 166 (1.8%) of genes in pham
- Manual Annotations of this start: 3 of 145
- Called 100.0% of time when present
- Phage (with cluster) where this start called: Liebe_58 (AZ2), MaGuCo_53 (AZ2), Maureen_58 (AZ2),

Start 22:

- Found in 1 of 166 (0.6%) of genes in pham
- Manual Annotations of this start: 1 of 145
- Called 100.0% of time when present
- Phage (with cluster) where this start called: Emotion_61 (AZ4),

Start 23:

- Found in 18 of 166 (10.8%) of genes in pham
- Manual Annotations of this start: 1 of 145
- Called 5.6% of time when present
- Phage (with cluster) where this start called: Taquito_55 (K4),

Start 24:

- Found in 22 of 166 (13.3%) of genes in pham
- Manual Annotations of this start: 18 of 145
- Called 95.5% of time when present
- Phage (with cluster) where this start called: Bobquesha_57 (K4), Chancellor_55 (K4), Cheetobro_55 (K4), Eponine_57 (K4), Fionnbharth_55 (K4), JF1_55 (K4), Juliette_57 (K4), Kraw_56 (K4), Lebo14_56 (K4), Malthus_56 (K4), MissDaisy_53 (K4), Mitti_55 (K4), OmniCritical_54 (K4), Patt_52 (K4), Reptar3000_53 (K4), Ruthiejr_56 (K4), SamScheppers_53 (K4), Slarp_55 (K4), Wintermute_55 (K4), Y10_54 (K4), Y2_54 (K4),

Start 26:

- Found in 1 of 166 (0.6%) of genes in pham
- Manual Annotations of this start: 1 of 145
- Called 100.0% of time when present
- Phage (with cluster) where this start called: KeAlii_54 (AZ1),

Start 28:

- Found in 3 of 166 (1.8%) of genes in pham
- Manual Annotations of this start: 3 of 145
- Called 100.0% of time when present
- Phage (with cluster) where this start called: Floop_38 (EH), Gretchen_38 (EH), Percival_38 (EH),

Start 29:

- Found in 5 of 166 (3.0%) of genes in pham
- Manual Annotations of this start: 5 of 145
- Called 100.0% of time when present
- Phage (with cluster) where this start called: Barnstormer_35 (EH), Caron_38 (EH), GardenState_38 (EH), IAmGroot_38 (EH), UtzChips_35 (EH),

Start 30:

- Found in 1 of 166 (0.6%) of genes in pham
- Manual Annotations of this start: 1 of 145
- Called 100.0% of time when present
- Phage (with cluster) where this start called: Gudmit_42 (singleton),

Start 31:

- Found in 11 of 166 (6.6%) of genes in pham
- Manual Annotations of this start: 10 of 145
- Called 100.0% of time when present
- Phage (with cluster) where this start called: BoostSeason_52 (K2), DismalFunk_52 (K2), DismalStressor_52 (K2), Doughnut_53 (K2), Findley_52 (K2), Marcoliusprime_52 (K2), Milly_52 (K2), Mufasa_52 (K2), Strobilo_52 (K2), TM4_47 (K2), ZoeJ_51 (K2),

Start 32:

- Found in 2 of 166 (1.2%) of genes in pham
- Manual Annotations of this start: 2 of 145
- Called 100.0% of time when present
- Phage (with cluster) where this start called: Mabodamaca_35 (EH), SuMoo_35 (EH),

Start 33:

- Found in 2 of 166 (1.2%) of genes in pham
- Manual Annotations of this start: 1 of 145
- Called 50.0% of time when present
- Phage (with cluster) where this start called: VroomVroom_56 (AZ4),

Start 35:

- Found in 11 of 166 (6.6%) of genes in pham
- Manual Annotations of this start: 7 of 145
- Called 100.0% of time when present
- Phage (with cluster) where this start called: AEgle_52 (AZ1), AGrandiflora_57 (AZ1), Adumb2043_53 (AZ1), Cyan_55 (AZ1), Joemato_55 (AZ1), Lego_54 (AZ1), Powerpuff_57 (AZ1), Simpson_57 (AZ1), Tallboi_56 (AZ1), Turab_53 (AZ1), YesChef_55 (AZ1),

Start 36:

- Found in 18 of 166 (10.8%) of genes in pham
- Manual Annotations of this start: 14 of 145
- Called 100.0% of time when present
- Phage (with cluster) where this start called: Amyev_57 (AZ1), Berrie_56 (AZ1), Community_58 (AZ1), DrSierra_54 (AZ1), Elezi_55 (AZ1), Iter_58 (AZ1), Janeemi_57 (AZ1), Jstan_57 (AZ1), Kaylissa_56 (AZ1), Lizalica_54 (AZ1), Phives_59 (AZ1), Pixelle_57 (AZ1), Subaru_56 (AZ1), Tian_56 (AZ1), Tuck_58 (AZ1), Tutumahutu_56 (AZ1), VResidence_55 (AZ1), Warda_56 (AZ1),

Start 37:

- Found in 5 of 166 (3.0%) of genes in pham
- Manual Annotations of this start: 5 of 145
- Called 100.0% of time when present
- Phage (with cluster) where this start called: Asa16_56 (AZ1), Eraser_56 (AZ1), London_56 (AZ1), Niobe_56 (AZ1), Nitro_58 (AZ1),

Start 38:

- Found in 13 of 166 (7.8%) of genes in pham
- Manual Annotations of this start: 12 of 145
- Called 100.0% of time when present
- Phage (with cluster) where this start called: Ascela_58 (AZ1), Cassia_55 (AZ1), Crewmate_61 (AZ1), IttyBittyPiggy_57 (AZ1), JohnDoe_55 (AZ1), JuneStar_58 (AZ1), Mudpuppy_52 (AZ1), ObiToo_61 (AZ1), Pumpkins_54 (AZ1), Shaffner_54 (AZ1), Tbone_55 (AZ1), TforTroy_57 (AZ1), Yang_57 (AZ1),

Start 39:

- Found in 2 of 166 (1.2%) of genes in pham
- Manual Annotations of this start: 2 of 145
- Called 100.0% of time when present
- Phage (with cluster) where this start called: Malibo_48 (DW), Sidious_47 (CZ7),

Start 40:

- Found in 51 of 166 (30.7%) of genes in pham
- Manual Annotations of this start: 48 of 145
- Called 100.0% of time when present
- Phage (with cluster) where this start called: Adnama_78 (E), Asriel_73 (E), Barbarian_73 (E), Becksu_73 (E), Bench_77 (E), BigBubba_74 (E), Bruin_71 (E),

BugsBunny_74 (E), Contagion_70 (E), Czyszczone1_75 (E), DrDrey_74 (E), Elph10_74 (E), Filch_75 (E), Gator_72 (E), HanKaySha_74 (E), Hopey_74 (E), Lilac_76 (E), Lilizi_75 (E), MISSy_75 (E), MPhalcon_75 (E), Maxxinista_76 (E), Miniwave_69 (E), Misfit_75 (E), Moldemort_77 (E), Mosby_70 (E), Murphy_74 (E), Palpatine_76 (E), Paperbeatsrock_73 (E), Phaja_72 (E), Pharsalus_71 (E), PhatBacter_78 (E), Phaux_76 (E), Phrux_71 (E), Policronamos_77 (E), Pumpkin_77 (E), Rakim_75 (E), RiverMonster_74 (E), Sassay_69 (E), Stark_75 (E), StellaBean_72 (E), Tarkin_73 (E), Terminus_77 (E), Thimble_76 (E), Thresher_76 (E), Tomaszewski_69 (E), Traaww1_70 (E), Wiggin_76 (E), Willez_69 (E), Xandras_73 (E), YassJohnny_71 (E), Youngblood_77 (E),

Start 41:

- Found in 1 of 166 (0.6%) of genes in pham
- Manual Annotations of this start: 1 of 145
- Called 100.0% of time when present
- Phage (with cluster) where this start called: WaterT_74 (GB),

Start 44:

- Found in 13 of 166 (7.8%) of genes in pham
- Manual Annotations of this start: 8 of 145
- Called 92.3% of time when present
- Phage (with cluster) where this start called: Adolin_58 (AZ1), AinMach_54 (AZ), Aminay_54 (K7), DrManhattan_58 (AZ1), JasmineDragon_60 (AZ4), LadyAstra_59 (AZ4), MiniMommy_63 (AZ4), MissSwiss_57 (AZ1), Reedo_54 (AZ1), ShakeltOph_62 (AZ4), Snek_57 (AZ3), Tweety19_58 (AZ3),

Start 45:

- Found in 2 of 166 (1.2%) of genes in pham
- Manual Annotations of this start: 1 of 145
- Called 100.0% of time when present
- Phage (with cluster) where this start called: Exile_50 (AZ), Soondubu_51 (AZ),

Summary by clusters:

There are 14 clusters represented in this pham: singleton, AZ, E, EH, CZ7, DW, K2, K7, GB, K4, AZ1, AZ2, AZ3, AZ4,

Info for manual annotations of cluster AZ:

- Start number 45 was manually annotated 1 time for cluster AZ.

Info for manual annotations of cluster AZ1:

- Start number 19 was manually annotated 1 time for cluster AZ1.
- Start number 26 was manually annotated 1 time for cluster AZ1.
- Start number 35 was manually annotated 7 times for cluster AZ1.
- Start number 36 was manually annotated 14 times for cluster AZ1.
- Start number 37 was manually annotated 5 times for cluster AZ1.
- Start number 38 was manually annotated 12 times for cluster AZ1.
- Start number 44 was manually annotated 4 times for cluster AZ1.

Info for manual annotations of cluster AZ2:

- Start number 21 was manually annotated 3 times for cluster AZ2.

Info for manual annotations of cluster AZ3:

- Start number 44 was manually annotated 2 times for cluster AZ3.

Info for manual annotations of cluster AZ4:

- Start number 22 was manually annotated 1 time for cluster AZ4.
- Start number 33 was manually annotated 1 time for cluster AZ4.
- Start number 44 was manually annotated 1 time for cluster AZ4.

Info for manual annotations of cluster CZ7:

- Start number 39 was manually annotated 1 time for cluster CZ7.

Info for manual annotations of cluster DW:

- Start number 39 was manually annotated 1 time for cluster DW.

Info for manual annotations of cluster E:

- Start number 40 was manually annotated 48 times for cluster E.

Info for manual annotations of cluster EH:

- Start number 28 was manually annotated 3 times for cluster EH.
- Start number 29 was manually annotated 5 times for cluster EH.
- Start number 32 was manually annotated 2 times for cluster EH.

Info for manual annotations of cluster GB:

- Start number 41 was manually annotated 1 time for cluster GB.

Info for manual annotations of cluster K2:

- Start number 31 was manually annotated 10 times for cluster K2.

Info for manual annotations of cluster K4:

- Start number 23 was manually annotated 1 time for cluster K4.
- Start number 24 was manually annotated 18 times for cluster K4.

Info for manual annotations of cluster K7:

- Start number 44 was manually annotated 1 time for cluster K7.

Gene Information:

Gene: AEgle_52 Start: 37591, Stop: 37782, Start Num: 35

Candidate Starts for AEgle_52:

(7, 37285), (Start: 35 @37591 has 7 MA's),

Gene: AGrandiflora_57 Start: 38760, Stop: 38960, Start Num: 35

Candidate Starts for AGrandiflora_57:

(2, 38211), (Start: 35 @38760 has 7 MA's), (61, 38892),

Gene: Adnama_78 Start: 48172, Stop: 48345, Start Num: 40

Candidate Starts for Adnama_78:

(Start: 40 @48172 has 48 MA's), (49, 48223),

Gene: Adolin_58 Start: 37478, Stop: 37633, Start Num: 44

Candidate Starts for Adolin_58:

(Start: 44 @37478 has 8 MA's), (58, 37556),

Gene: Adumb2043_53 Start: 37614, Stop: 37805, Start Num: 35
Candidate Starts for Adumb2043_53:
(7, 37308), (Start: 35 @37614 has 7 MA's),

Gene: AinMach_54 Start: 37308, Stop: 37466, Start Num: 44
Candidate Starts for AinMach_54:
(Start: 44 @37308 has 8 MA's), (51, 37350), (53, 37356),

Gene: Aminay_54 Start: 38354, Stop: 38521, Start Num: 44
Candidate Starts for Aminay_54:
(Start: 44 @38354 has 8 MA's),

Gene: Amyev_57 Start: 40846, Stop: 41031, Start Num: 36
Candidate Starts for Amyev_57:
(Start: 36 @40846 has 14 MA's),

Gene: Asa16_56 Start: 39543, Stop: 39728, Start Num: 37
Candidate Starts for Asa16_56:
(Start: 37 @39543 has 5 MA's),

Gene: Ascela_58 Start: 39002, Stop: 39196, Start Num: 38
Candidate Starts for Ascela_58:
(Start: 38 @39002 has 12 MA's),

Gene: Asriel_73 Start: 46509, Stop: 46682, Start Num: 40
Candidate Starts for Asriel_73:
(Start: 40 @46509 has 48 MA's), (49, 46560),

Gene: Barbarian_73 Start: 46509, Stop: 46682, Start Num: 40
Candidate Starts for Barbarian_73:
(Start: 40 @46509 has 48 MA's), (49, 46560),

Gene: Barnstormer_35 Start: 24679, Stop: 24924, Start Num: 29
Candidate Starts for Barnstormer_35:
(13, 24565), (Start: 29 @24679 has 5 MA's), (62, 24856),

Gene: Becksu_73 Start: 48345, Stop: 48524, Start Num: 40
Candidate Starts for Becksu_73:
(Start: 40 @48345 has 48 MA's), (49, 48396),

Gene: Bench_77 Start: 47813, Stop: 47992, Start Num: 40
Candidate Starts for Bench_77:
(Start: 40 @47813 has 48 MA's), (49, 47864),

Gene: Berrie_56 Start: 38817, Stop: 38999, Start Num: 36
Candidate Starts for Berrie_56:
(Start: 36 @38817 has 14 MA's),

Gene: BigBubba_74 Start: 47525, Stop: 47704, Start Num: 40
Candidate Starts for BigBubba_74:
(Start: 40 @47525 has 48 MA's), (49, 47576),

Gene: Bobquesha_57 Start: 37478, Stop: 37717, Start Num: 24
Candidate Starts for Bobquesha_57:
(Start: 24 @37478 has 18 MA's), (42, 37547),

Gene: BoostSeason_52 Start: 38177, Stop: 38386, Start Num: 31
Candidate Starts for BoostSeason_52:
(Start: 31 @38177 has 10 MA's), (34, 38189), (46, 38240), (49, 38261), (51, 38273), (55, 38288), (58, 38303), (60, 38315),

Gene: Bruin_71 Start: 46689, Stop: 46868, Start Num: 40
Candidate Starts for Bruin_71:
(Start: 40 @46689 has 48 MA's), (49, 46740),

Gene: BugsBunny_74 Start: 48221, Stop: 48400, Start Num: 40
Candidate Starts for BugsBunny_74:
(Start: 40 @48221 has 48 MA's), (49, 48272),

Gene: Caron_38 Start: 25164, Stop: 25409, Start Num: 29
Candidate Starts for Caron_38:
(13, 25050), (Start: 29 @25164 has 5 MA's),

Gene: Cassia_55 Start: 38504, Stop: 38698, Start Num: 38
Candidate Starts for Cassia_55:
(Start: 38 @38504 has 12 MA's),

Gene: Chancellor_55 Start: 37968, Stop: 38207, Start Num: 24
Candidate Starts for Chancellor_55:
(Start: 23 @37965 has 1 MA's), (Start: 24 @37968 has 18 MA's), (25, 37980), (42, 38037), (49, 38082), (58, 38127),

Gene: Cheetobro_55 Start: 37965, Stop: 38204, Start Num: 24
Candidate Starts for Cheetobro_55:
(Start: 23 @37962 has 1 MA's), (Start: 24 @37965 has 18 MA's), (25, 37977), (42, 38034), (49, 38079), (58, 38124),

Gene: Community_58 Start: 40395, Stop: 40577, Start Num: 36
Candidate Starts for Community_58:
(Start: 36 @40395 has 14 MA's),

Gene: Contagion_70 Start: 46970, Stop: 47149, Start Num: 40
Candidate Starts for Contagion_70:
(Start: 40 @46970 has 48 MA's), (49, 47021),

Gene: Crewmate_61 Start: 40124, Stop: 40318, Start Num: 38
Candidate Starts for Crewmate_61:
(Start: 38 @40124 has 12 MA's), (61, 40250),

Gene: Cyan_55 Start: 38301, Stop: 38501, Start Num: 35
Candidate Starts for Cyan_55:
(Start: 35 @38301 has 7 MA's), (61, 38433),

Gene: Czyszczonek1_75 Start: 47676, Stop: 47855, Start Num: 40
Candidate Starts for Czyszczonek1_75:

(Start: 40 @47676 has 48 MA's), (49, 47727),

Gene: DismalFunk_52 Start: 38608, Stop: 38817, Start Num: 31

Candidate Starts for DismalFunk_52:

(Start: 31 @38608 has 10 MA's), (34, 38620), (46, 38671), (49, 38692), (51, 38704), (55, 38719), (58, 38734), (60, 38746),

Gene: DismalStressor_52 Start: 38608, Stop: 38817, Start Num: 31

Candidate Starts for DismalStressor_52:

(Start: 31 @38608 has 10 MA's), (34, 38620), (46, 38671), (49, 38692), (51, 38704), (55, 38719), (58, 38734), (60, 38746),

Gene: Doughnut_53 Start: 38218, Stop: 38427, Start Num: 31

Candidate Starts for Doughnut_53:

(Start: 31 @38218 has 10 MA's), (34, 38230), (46, 38281), (49, 38302), (51, 38314), (55, 38329), (58, 38344), (60, 38356),

Gene: DrDrey_74 Start: 48595, Stop: 48774, Start Num: 40

Candidate Starts for DrDrey_74:

(Start: 40 @48595 has 48 MA's), (49, 48646),

Gene: DrManhattan_58 Start: 37046, Stop: 37201, Start Num: 44

Candidate Starts for DrManhattan_58:

(Start: 44 @37046 has 8 MA's), (58, 37124),

Gene: DrSierra_54 Start: 37220, Stop: 37399, Start Num: 36

Candidate Starts for DrSierra_54:

(Start: 36 @37220 has 14 MA's),

Gene: Elezi_55 Start: 39303, Stop: 39485, Start Num: 36

Candidate Starts for Elezi_55:

(10, 39096), (Start: 36 @39303 has 14 MA's),

Gene: Elph10_74 Start: 47174, Stop: 47353, Start Num: 40

Candidate Starts for Elph10_74:

(Start: 40 @47174 has 48 MA's), (49, 47225),

Gene: Emotion_61 Start: 40785, Stop: 40988, Start Num: 22

Candidate Starts for Emotion_61:

(12, 40701), (Start: 22 @40785 has 1 MA's), (43, 40836),

Gene: Eponine_57 Start: 38805, Stop: 39044, Start Num: 24

Candidate Starts for Eponine_57:

(Start: 23 @38802 has 1 MA's), (Start: 24 @38805 has 18 MA's), (25, 38817), (42, 38874), (49, 38919), (58, 38964),

Gene: Eraser_56 Start: 39550, Stop: 39735, Start Num: 37

Candidate Starts for Eraser_56:

(Start: 37 @39550 has 5 MA's),

Gene: Exile_50 Start: 40505, Stop: 40657, Start Num: 45

Candidate Starts for Exile_50:

(Start: 45 @40505 has 1 MA's), (54, 40547), (64, 40637),

Gene: Filch_75 Start: 47101, Stop: 47280, Start Num: 40

Candidate Starts for Filch_75:

(Start: 40 @47101 has 48 MA's), (49, 47152),

Gene: Findley_52 Start: 38601, Stop: 38810, Start Num: 31

Candidate Starts for Findley_52:

(Start: 31 @38601 has 10 MA's), (34, 38613), (46, 38664), (49, 38685), (51, 38697), (55, 38712), (58, 38727), (60, 38739),

Gene: Fionnbharth_55 Start: 38203, Stop: 38442, Start Num: 24

Candidate Starts for Fionnbharth_55:

(Start: 23 @38200 has 1 MA's), (Start: 24 @38203 has 18 MA's), (25, 38215), (42, 38272), (49, 38317), (58, 38362),

Gene: Floof_38 Start: 25665, Stop: 25910, Start Num: 28

Candidate Starts for Floof_38:

(18, 25593), (Start: 28 @25665 has 3 MA's), (55, 25791), (57, 25803), (66, 25899),

Gene: GardenState_38 Start: 25346, Stop: 25567, Start Num: 29

Candidate Starts for GardenState_38:

(Start: 29 @25346 has 5 MA's),

Gene: Gator_72 Start: 48006, Stop: 48185, Start Num: 40

Candidate Starts for Gator_72:

(Start: 40 @48006 has 48 MA's), (49, 48057),

Gene: Gretchen_38 Start: 26776, Stop: 27021, Start Num: 28

Candidate Starts for Gretchen_38:

(Start: 28 @26776 has 3 MA's),

Gene: Gudmit_42 Start: 28762, Stop: 28971, Start Num: 30

Candidate Starts for Gudmit_42:

(14, 28654), (15, 28663), (Start: 30 @28762 has 1 MA's), (60, 28894),

Gene: HanKaySha_74 Start: 47254, Stop: 47433, Start Num: 40

Candidate Starts for HanKaySha_74:

(Start: 40 @47254 has 48 MA's), (49, 47305),

Gene: Hopey_74 Start: 47786, Stop: 47965, Start Num: 40

Candidate Starts for Hopey_74:

(Start: 40 @47786 has 48 MA's), (49, 47837),

Gene: IAmGroot_38 Start: 26011, Stop: 26232, Start Num: 29

Candidate Starts for IAmGroot_38:

(Start: 29 @26011 has 5 MA's),

Gene: Iter_58 Start: 38994, Stop: 39182, Start Num: 36

Candidate Starts for Iter_58:

(Start: 36 @38994 has 14 MA's),

Gene: IttyBittyPiggy_57 Start: 38132, Stop: 38326, Start Num: 38

Candidate Starts for IttyBittyPiggy_57:

(Start: 38 @38132 has 12 MA's), (64, 38306),

Gene: JF1_55 Start: 38120, Stop: 38359, Start Num: 24

Candidate Starts for JF1_55:

(Start: 23 @38117 has 1 MA's), (Start: 24 @38120 has 18 MA's), (25, 38132), (42, 38189), (49, 38234), (58, 38279),

Gene: Janeemi_57 Start: 39872, Stop: 40054, Start Num: 36

Candidate Starts for Janeemi_57:

(Start: 36 @39872 has 14 MA's), (59, 39989),

Gene: JasmineDragon_60 Start: 40141, Stop: 40287, Start Num: 44

Candidate Starts for JasmineDragon_60:

(Start: 44 @40141 has 8 MA's), (58, 40219),

Gene: Joemato_55 Start: 38382, Stop: 38582, Start Num: 35

Candidate Starts for Joemato_55:

(2, 37833), (Start: 35 @38382 has 7 MA's), (61, 38514),

Gene: JohnDoe_55 Start: 38368, Stop: 38562, Start Num: 38

Candidate Starts for JohnDoe_55:

(Start: 38 @38368 has 12 MA's), (61, 38494),

Gene: Jstan_57 Start: 39307, Stop: 39489, Start Num: 36

Candidate Starts for Jstan_57:

(10, 39100), (Start: 36 @39307 has 14 MA's),

Gene: Juliette_57 Start: 38273, Stop: 38512, Start Num: 24

Candidate Starts for Juliette_57:

(Start: 23 @38270 has 1 MA's), (Start: 24 @38273 has 18 MA's), (25, 38285), (42, 38342), (49, 38387), (58, 38432),

Gene: JuneStar_58 Start: 41416, Stop: 41610, Start Num: 38

Candidate Starts for JuneStar_58:

(11, 41221), (Start: 38 @41416 has 12 MA's),

Gene: Kaylissa_56 Start: 38763, Stop: 38960, Start Num: 36

Candidate Starts for Kaylissa_56:

(Start: 36 @38763 has 14 MA's), (61, 38892),

Gene: KeAlii_54 Start: 38009, Stop: 38218, Start Num: 26

Candidate Starts for KeAlii_54:

(Start: 26 @38009 has 1 MA's),

Gene: Kraw_56 Start: 37961, Stop: 38200, Start Num: 24

Candidate Starts for Kraw_56:

(Start: 23 @37958 has 1 MA's), (Start: 24 @37961 has 18 MA's), (25, 37973), (42, 38030), (49, 38075), (58, 38120),

Gene: LadyAstra_59 Start: 39371, Stop: 39517, Start Num: 44

Candidate Starts for LadyAstra_59:

(Start: 33 @39329 has 1 MA's), (Start: 44 @39371 has 8 MA's), (58, 39449),

Gene: Lebo14_56 Start: 38228, Stop: 38467, Start Num: 24

Candidate Starts for Lebo14_56:

(Start: 23 @38225 has 1 MA's), (Start: 24 @38228 has 18 MA's), (25, 38240), (42, 38297), (49, 38342), (58, 38387),

Gene: Lego_54 Start: 38079, Stop: 38279, Start Num: 35

Candidate Starts for Lego_54:

(1, 37506), (4, 37554), (9, 37797), (Start: 35 @38079 has 7 MA's), (61, 38211),

Gene: Liebe_58 Start: 41412, Stop: 41675, Start Num: 21

Candidate Starts for Liebe_58:

(Start: 21 @41412 has 3 MA's), (27, 41445), (47, 41514), (52, 41544), (54, 41550), (61, 41595), (64, 41643), (65, 41667),

Gene: Lilac_76 Start: 47571, Stop: 47750, Start Num: 40

Candidate Starts for Lilac_76:

(Start: 40 @47571 has 48 MA's), (49, 47622),

Gene: Lilizi_75 Start: 47284, Stop: 47463, Start Num: 40

Candidate Starts for Lilizi_75:

(Start: 40 @47284 has 48 MA's), (49, 47335),

Gene: Lizalica_54 Start: 37826, Stop: 38008, Start Num: 36

Candidate Starts for Lizalica_54:

(Start: 36 @37826 has 14 MA's),

Gene: London_56 Start: 39541, Stop: 39726, Start Num: 37

Candidate Starts for London_56:

(Start: 37 @39541 has 5 MA's),

Gene: MISSy_75 Start: 47675, Stop: 47854, Start Num: 40

Candidate Starts for MISSy_75:

(Start: 40 @47675 has 48 MA's), (49, 47726),

Gene: MPhalcon_75 Start: 47668, Stop: 47847, Start Num: 40

Candidate Starts for MPhalcon_75:

(Start: 40 @47668 has 48 MA's), (49, 47719),

Gene: MaGuCo_53 Start: 39882, Stop: 40133, Start Num: 21

Candidate Starts for MaGuCo_53:

(Start: 21 @39882 has 3 MA's), (27, 39915), (47, 39984), (50, 40005), (54, 40020), (59, 40059), (61, 40065), (64, 40113),

Gene: Mabodamaca_35 Start: 25059, Stop: 25295, Start Num: 32

Candidate Starts for Mabodamaca_35:

(Start: 32 @25059 has 2 MA's),

Gene: Malibo_48 Start: 36272, Stop: 36448, Start Num: 39

Candidate Starts for Malibo_48:

(16, 36155), (Start: 39 @36272 has 2 MA's),

Gene: Malthus_56 Start: 37961, Stop: 38200, Start Num: 24

Candidate Starts for Malthus_56:

(Start: 23 @37958 has 1 MA's), (Start: 24 @37961 has 18 MA's), (25, 37973), (42, 38030), (49, 38075), (58, 38120),

Gene: Marcoliusprime_52 Start: 38608, Stop: 38817, Start Num: 31

Candidate Starts for Marcoliusprime_52:

(Start: 31 @38608 has 10 MA's), (34, 38620), (46, 38671), (49, 38692), (51, 38704), (55, 38719), (58, 38734), (60, 38746),

Gene: Maureen_58 Start: 41411, Stop: 41674, Start Num: 21

Candidate Starts for Maureen_58:

(Start: 21 @41411 has 3 MA's), (27, 41444), (47, 41513), (52, 41543), (54, 41549), (61, 41594), (64, 41642), (65, 41666),

Gene: Maxxinista_76 Start: 47544, Stop: 47723, Start Num: 40

Candidate Starts for Maxxinista_76:

(Start: 40 @47544 has 48 MA's), (49, 47595),

Gene: Milly_52 Start: 38581, Stop: 38790, Start Num: 31

Candidate Starts for Milly_52:

(Start: 31 @38581 has 10 MA's), (34, 38593), (46, 38644), (49, 38665), (51, 38677), (55, 38692), (58, 38707), (60, 38719),

Gene: MiniMommy_63 Start: 40144, Stop: 40290, Start Num: 44

Candidate Starts for MiniMommy_63:

(Start: 44 @40144 has 8 MA's), (58, 40222),

Gene: Miniwave_69 Start: 47213, Stop: 47386, Start Num: 40

Candidate Starts for Miniwave_69:

(Start: 40 @47213 has 48 MA's), (49, 47264),

Gene: Misfit_75 Start: 48687, Stop: 48866, Start Num: 40

Candidate Starts for Misfit_75:

(Start: 40 @48687 has 48 MA's), (49, 48738),

Gene: MissDaisy_53 Start: 37493, Stop: 37732, Start Num: 24

Candidate Starts for MissDaisy_53:

(Start: 24 @37493 has 18 MA's), (42, 37562),

Gene: MissSwiss_57 Start: 37199, Stop: 37351, Start Num: 44

Candidate Starts for MissSwiss_57:

(Start: 44 @37199 has 8 MA's),

Gene: Mitti_55 Start: 38140, Stop: 38379, Start Num: 24

Candidate Starts for Mitti_55:

(Start: 23 @38137 has 1 MA's), (Start: 24 @38140 has 18 MA's), (25, 38152), (42, 38209), (49, 38254), (58, 38299),

Gene: Moldemort_77 Start: 47772, Stop: 47945, Start Num: 40

Candidate Starts for Moldemort_77:

(Start: 40 @47772 has 48 MA's), (49, 47823),

Gene: Mosby_70 Start: 46970, Stop: 47149, Start Num: 40

Candidate Starts for Mosby_70:

(Start: 40 @46970 has 48 MA's), (49, 47021),

Gene: Mudpuppy_52 Start: 38242, Stop: 38436, Start Num: 38

Candidate Starts for Mudpuppy_52:

(Start: 38 @38242 has 12 MA's), (61, 38368),

Gene: Mufasa_52 Start: 38162, Stop: 38371, Start Num: 31

Candidate Starts for Mufasa_52:

(Start: 31 @38162 has 10 MA's), (34, 38174), (46, 38225), (49, 38246), (51, 38258), (55, 38273), (58, 38288), (60, 38300),

Gene: Murphy_74 Start: 48056, Stop: 48235, Start Num: 40

Candidate Starts for Murphy_74:

(Start: 40 @48056 has 48 MA's), (49, 48107),

Gene: Niobe_56 Start: 39544, Stop: 39729, Start Num: 37

Candidate Starts for Niobe_56:

(Start: 37 @39544 has 5 MA's),

Gene: Nitro_58 Start: 40465, Stop: 40653, Start Num: 37

Candidate Starts for Nitro_58:

(Start: 37 @40465 has 5 MA's),

Gene: ObiToo_61 Start: 39721, Stop: 39915, Start Num: 38

Candidate Starts for ObiToo_61:

(Start: 38 @39721 has 12 MA's), (61, 39847), (63, 39874),

Gene: OmniCritical_54 Start: 37949, Stop: 38188, Start Num: 24

Candidate Starts for OmniCritical_54:

(Start: 23 @37946 has 1 MA's), (Start: 24 @37949 has 18 MA's), (25, 37961), (42, 38018), (49, 38063), (58, 38108),

Gene: Palpatine_76 Start: 48646, Stop: 48825, Start Num: 40

Candidate Starts for Palpatine_76:

(Start: 40 @48646 has 48 MA's), (49, 48697),

Gene: Paperbeatsrock_73 Start: 47891, Stop: 48064, Start Num: 40

Candidate Starts for Paperbeatsrock_73:

(Start: 40 @47891 has 48 MA's), (49, 47942),

Gene: Patt_52 Start: 37217, Stop: 37456, Start Num: 24

Candidate Starts for Patt_52:

(Start: 24 @37217 has 18 MA's), (42, 37286),

Gene: Percival_38 Start: 26610, Stop: 26855, Start Num: 28

Candidate Starts for Percival_38:

(Start: 28 @26610 has 3 MA's),

Gene: Phaja_72 Start: 47717, Stop: 47890, Start Num: 40

Candidate Starts for Phaja_72:

(Start: 40 @47717 has 48 MA's), (49, 47768),

Gene: Pharsalus_71 Start: 47691, Stop: 47864, Start Num: 40

Candidate Starts for Pharsalus_71:
(Start: 40 @47691 has 48 MA's), (49, 47742),

Gene: PhatBacter_78 Start: 48663, Stop: 48842, Start Num: 40
Candidate Starts for PhatBacter_78:
(Start: 40 @48663 has 48 MA's), (49, 48714),

Gene: Phaux_76 Start: 48658, Stop: 48837, Start Num: 40
Candidate Starts for Phaux_76:
(Start: 40 @48658 has 48 MA's), (49, 48709),

Gene: Phives_59 Start: 40511, Stop: 40693, Start Num: 36
Candidate Starts for Phives_59:
(5, 40142), (Start: 36 @40511 has 14 MA's),

Gene: Phrux_71 Start: 47254, Stop: 47433, Start Num: 40
Candidate Starts for Phrux_71:
(Start: 40 @47254 has 48 MA's), (49, 47305),

Gene: Pixelle_57 Start: 40947, Stop: 41132, Start Num: 36
Candidate Starts for Pixelle_57:
(6, 40599), (Start: 36 @40947 has 14 MA's),

Gene: Policronamos_77 Start: 48658, Stop: 48837, Start Num: 40
Candidate Starts for Policronamos_77:
(Start: 40 @48658 has 48 MA's), (49, 48709),

Gene: Powerpuff_57 Start: 39483, Stop: 39683, Start Num: 35
Candidate Starts for Powerpuff_57:
(Start: 35 @39483 has 7 MA's), (61, 39615),

Gene: Pumpkin_77 Start: 48312, Stop: 48491, Start Num: 40
Candidate Starts for Pumpkin_77:
(Start: 40 @48312 has 48 MA's), (49, 48363),

Gene: Pumpkins_54 Start: 39127, Stop: 39321, Start Num: 38
Candidate Starts for Pumpkins_54:
(Start: 38 @39127 has 12 MA's),

Gene: Rakim_75 Start: 47768, Stop: 47947, Start Num: 40
Candidate Starts for Rakim_75:
(Start: 40 @47768 has 48 MA's), (49, 47819),

Gene: Reedo_54 Start: 36267, Stop: 36416, Start Num: 44
Candidate Starts for Reedo_54:
(Start: 44 @36267 has 8 MA's), (58, 36342),

Gene: Reptar3000_53 Start: 37205, Stop: 37444, Start Num: 24
Candidate Starts for Reptar3000_53:
(Start: 24 @37205 has 18 MA's), (42, 37274),

Gene: RiverMonster_74 Start: 47832, Stop: 48011, Start Num: 40
Candidate Starts for RiverMonster_74:

(Start: 40 @47832 has 48 MA's), (49, 47883),

Gene: Ruthiejr_56 Start: 38011, Stop: 38250, Start Num: 24

Candidate Starts for Ruthiejr_56:

(Start: 23 @38008 has 1 MA's), (Start: 24 @38011 has 18 MA's), (25, 38023), (42, 38080), (49, 38125), (58, 38170),

Gene: SamScheppers_53 Start: 38440, Stop: 38679, Start Num: 24

Candidate Starts for SamScheppers_53:

(Start: 23 @38437 has 1 MA's), (Start: 24 @38440 has 18 MA's), (25, 38452), (42, 38509), (49, 38554), (58, 38599),

Gene: Sassay_69 Start: 45932, Stop: 46111, Start Num: 40

Candidate Starts for Sassay_69:

(Start: 40 @45932 has 48 MA's), (49, 45983),

Gene: Shaffner_54 Start: 38968, Stop: 39162, Start Num: 38

Candidate Starts for Shaffner_54:

(11, 38773), (Start: 38 @38968 has 12 MA's),

Gene: ShakeltOph_62 Start: 40141, Stop: 40287, Start Num: 44

Candidate Starts for ShakeltOph_62:

(Start: 44 @40141 has 8 MA's), (58, 40219),

Gene: Sidious_47 Start: 36440, Stop: 36616, Start Num: 39

Candidate Starts for Sidious_47:

(Start: 39 @36440 has 2 MA's), (56, 36527),

Gene: Simpson_57 Start: 38386, Stop: 38586, Start Num: 35

Candidate Starts for Simpson_57:

(2, 37837), (Start: 35 @38386 has 7 MA's), (61, 38518),

Gene: Slarp_55 Start: 37968, Stop: 38207, Start Num: 24

Candidate Starts for Slarp_55:

(Start: 23 @37965 has 1 MA's), (Start: 24 @37968 has 18 MA's), (25, 37980), (42, 38037), (49, 38082), (58, 38127),

Gene: Snek_57 Start: 37403, Stop: 37558, Start Num: 44

Candidate Starts for Snek_57:

(Start: 44 @37403 has 8 MA's), (64, 37541),

Gene: Soondubu_51 Start: 41018, Stop: 41170, Start Num: 45

Candidate Starts for Soondubu_51:

(Start: 45 @41018 has 1 MA's), (54, 41060), (64, 41150),

Gene: Stark_75 Start: 47715, Stop: 47894, Start Num: 40

Candidate Starts for Stark_75:

(Start: 40 @47715 has 48 MA's), (49, 47766),

Gene: StellaBean_72 Start: 47478, Stop: 47651, Start Num: 40

Candidate Starts for StellaBean_72:

(Start: 40 @47478 has 48 MA's), (49, 47529),

Gene: Strobilo_52 Start: 38583, Stop: 38792, Start Num: 31

Candidate Starts for Strobilo_52:

(Start: 31 @38583 has 10 MA's), (34, 38595), (46, 38646), (49, 38667), (51, 38679), (55, 38694), (58, 38709), (60, 38721),

Gene: SuMoo_35 Start: 24005, Stop: 24241, Start Num: 32

Candidate Starts for SuMoo_35:

(Start: 32 @24005 has 2 MA's),

Gene: Subaru_56 Start: 39303, Stop: 39485, Start Num: 36

Candidate Starts for Subaru_56:

(10, 39096), (Start: 36 @39303 has 14 MA's),

Gene: TM4_47 Start: 32969, Stop: 33172, Start Num: 31

Candidate Starts for TM4_47:

(Start: 31 @32969 has 10 MA's), (34, 32981), (46, 33026), (49, 33047), (51, 33059), (55, 33074), (58, 33089), (60, 33101),

Gene: Tallboi_56 Start: 39686, Stop: 39874, Start Num: 35

Candidate Starts for Tallboi_56:

(Start: 35 @39686 has 7 MA's),

Gene: Taquito_55 Start: 38293, Stop: 38535, Start Num: 23

Candidate Starts for Taquito_55:

(Start: 23 @38293 has 1 MA's), (Start: 24 @38296 has 18 MA's), (25, 38308), (42, 38365), (49, 38410), (58, 38455),

Gene: Tarkin_73 Start: 47900, Stop: 48073, Start Num: 40

Candidate Starts for Tarkin_73:

(Start: 40 @47900 has 48 MA's), (49, 47951),

Gene: Tbone_55 Start: 38934, Stop: 39128, Start Num: 38

Candidate Starts for Tbone_55:

(Start: 38 @38934 has 12 MA's), (61, 39060),

Gene: Terminus_77 Start: 48687, Stop: 48866, Start Num: 40

Candidate Starts for Terminus_77:

(Start: 40 @48687 has 48 MA's), (49, 48738),

Gene: TforTroy_57 Start: 39052, Stop: 39246, Start Num: 38

Candidate Starts for TforTroy_57:

(11, 38854), (Start: 38 @39052 has 12 MA's), (61, 39178),

Gene: Thimble_76 Start: 47135, Stop: 47314, Start Num: 40

Candidate Starts for Thimble_76:

(Start: 40 @47135 has 48 MA's), (49, 47186),

Gene: Thresher_76 Start: 48774, Stop: 48953, Start Num: 40

Candidate Starts for Thresher_76:

(Start: 40 @48774 has 48 MA's), (49, 48825),

Gene: Tian_56 Start: 40845, Stop: 41030, Start Num: 36

Candidate Starts for Tian_56:

(Start: 36 @40845 has 14 MA's),

Gene: Tomaszewski_69 Start: 47063, Stop: 47236, Start Num: 40

Candidate Starts for Tomaszewski_69:

(Start: 40 @47063 has 48 MA's), (49, 47114),

Gene: Traaww1_70 Start: 47338, Stop: 47511, Start Num: 40

Candidate Starts for Traaww1_70:

(Start: 40 @47338 has 48 MA's), (49, 47389),

Gene: Tuck_58 Start: 40300, Stop: 40482, Start Num: 36

Candidate Starts for Tuck_58:

(Start: 36 @40300 has 14 MA's),

Gene: Turab_53 Start: 37635, Stop: 37826, Start Num: 35

Candidate Starts for Turab_53:

(7, 37329), (Start: 35 @37635 has 7 MA's),

Gene: Tutumahutu_56 Start: 38356, Stop: 38553, Start Num: 36

Candidate Starts for Tutumahutu_56:

(Start: 36 @38356 has 14 MA's), (61, 38485),

Gene: Tweety19_58 Start: 37403, Stop: 37558, Start Num: 44

Candidate Starts for Tweety19_58:

(Start: 44 @37403 has 8 MA's), (64, 37541),

Gene: UtzChips_35 Start: 24664, Stop: 24909, Start Num: 29

Candidate Starts for UtzChips_35:

(13, 24550), (Start: 29 @24664 has 5 MA's), (62, 24841),

Gene: VResidence_55 Start: 37492, Stop: 37677, Start Num: 36

Candidate Starts for VResidence_55:

(Start: 36 @37492 has 14 MA's),

Gene: VroomVroom_56 Start: 39271, Stop: 39462, Start Num: 33

Candidate Starts for VroomVroom_56:

(3, 38755), (8, 39007), (17, 39190), (Start: 33 @39271 has 1 MA's), (Start: 44 @39316 has 8 MA's), (58, 39394), (62, 39427),

Gene: Warda_56 Start: 38671, Stop: 38853, Start Num: 36

Candidate Starts for Warda_56:

(Start: 36 @38671 has 14 MA's),

Gene: WaterT_74 Start: 43421, Stop: 43254, Start Num: 41

Candidate Starts for WaterT_74:

(20, 43508), (Start: 41 @43421 has 1 MA's), (47, 43391), (48, 43382), (60, 43319), (63, 43289), (64, 43268),

Gene: Wiggin_76 Start: 47739, Stop: 47912, Start Num: 40

Candidate Starts for Wiggin_76:

(Start: 40 @47739 has 48 MA's), (49, 47790),

Gene: Wildwest_53 Start: 38260, Stop: 38493, Start Num: 19

Candidate Starts for Wildwest_53:

(Start: 19 @38260 has 1 MA's),

Gene: Willez_69 Start: 45932, Stop: 46111, Start Num: 40

Candidate Starts for Willez_69:

(Start: 40 @45932 has 48 MA's), (49, 45983),

Gene: Wintermute_55 Start: 38198, Stop: 38437, Start Num: 24

Candidate Starts for Wintermute_55:

(Start: 23 @38195 has 1 MA's), (Start: 24 @38198 has 18 MA's), (25, 38210), (42, 38267), (49, 38312), (58, 38357),

Gene: Xandras_73 Start: 47147, Stop: 47326, Start Num: 40

Candidate Starts for Xandras_73:

(Start: 40 @47147 has 48 MA's), (49, 47198),

Gene: Y10_54 Start: 38120, Stop: 38359, Start Num: 24

Candidate Starts for Y10_54:

(Start: 23 @38117 has 1 MA's), (Start: 24 @38120 has 18 MA's), (25, 38132), (42, 38189), (49, 38234), (58, 38279),

Gene: Y2_54 Start: 38120, Stop: 38359, Start Num: 24

Candidate Starts for Y2_54:

(Start: 23 @38117 has 1 MA's), (Start: 24 @38120 has 18 MA's), (25, 38132), (42, 38189), (49, 38234), (58, 38279),

Gene: Yang_57 Start: 39052, Stop: 39246, Start Num: 38

Candidate Starts for Yang_57:

(Start: 38 @39052 has 12 MA's), (64, 39226),

Gene: YassJohnny_71 Start: 47102, Stop: 47275, Start Num: 40

Candidate Starts for YassJohnny_71:

(Start: 40 @47102 has 48 MA's), (49, 47153),

Gene: YesChef_55 Start: 38342, Stop: 38542, Start Num: 35

Candidate Starts for YesChef_55:

(Start: 35 @38342 has 7 MA's), (61, 38474),

Gene: Youngblood_77 Start: 48614, Stop: 48793, Start Num: 40

Candidate Starts for Youngblood_77:

(Start: 40 @48614 has 48 MA's), (49, 48665),

Gene: ZoeJ_51 Start: 38060, Stop: 38263, Start Num: 31

Candidate Starts for ZoeJ_51:

(Start: 31 @38060 has 10 MA's), (34, 38072), (46, 38117), (49, 38138), (51, 38150), (55, 38165), (58, 38180),