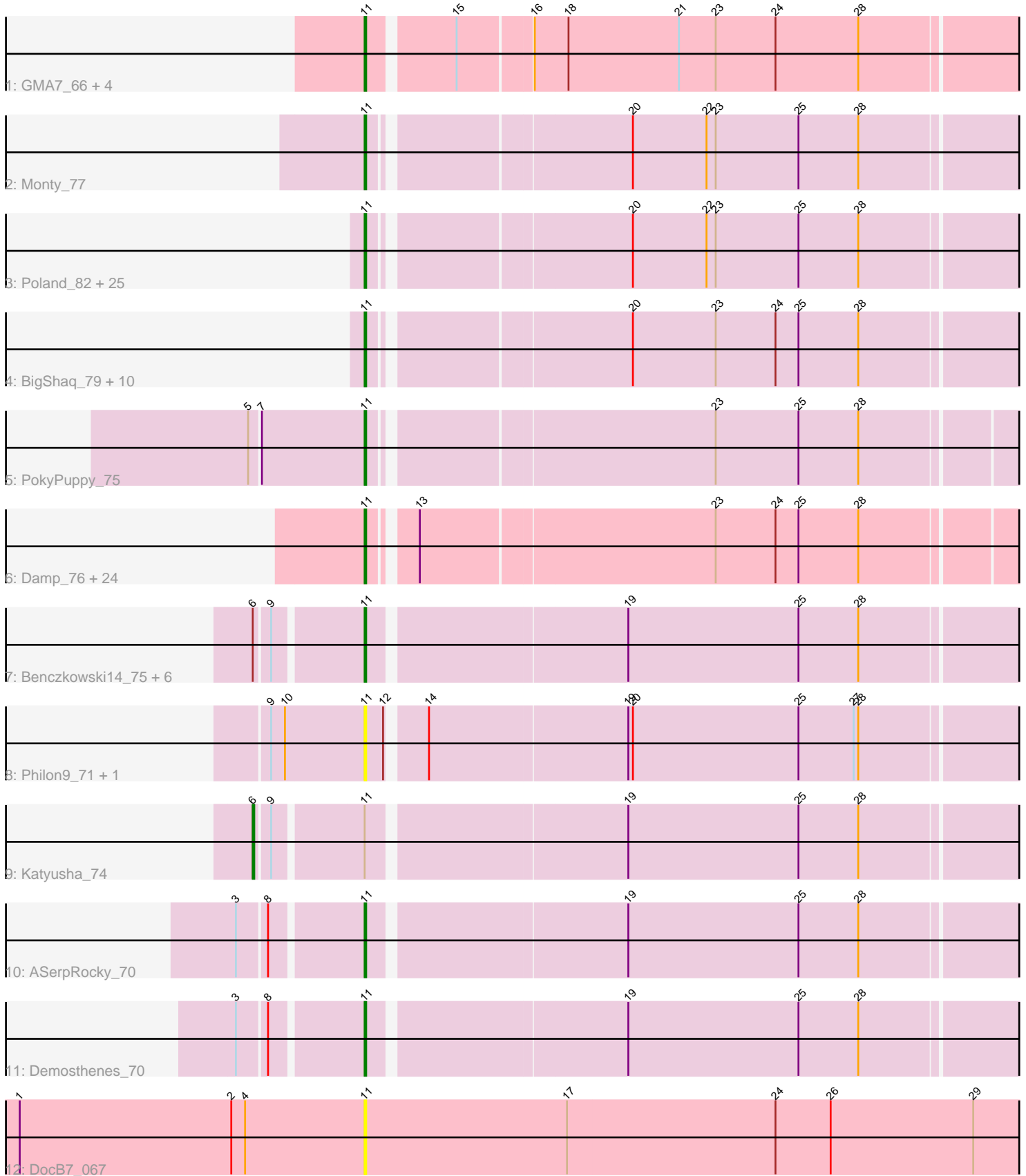


Pham 223074



Note: Tracks are now grouped by subcluster and scaled. Switching in subcluster is indicated by changes in track color. Track scale is now set by default to display the region 30 bp upstream of start 1 to 30 bp downstream of the last possible start. If this default region is judged to be packed too tightly with annotated starts, the track will be further scaled to only show that region of the ORF with annotated starts. This action will be indicated by adding "Zoomed" to the title. For starts, yellow indicates the location of called starts comprised solely of Glimmer/GeneMark auto-annotations, green indicates the location of called starts with at least 1 manual gene annotation.

Pham 223074 Report

This analysis was run 03/28/25 on database version 593.

Pham number 223074 has 82 members, 13 are drafts.

Phages represented in each track:

- Track 1 : GMA7_66, HayZem_77, Austin_76, Amore2_77, GTE7_65
- Track 2 : Monty_77
- Track 3 : Poland_82, CathyBurgh_77, Hotorobo_78, FelixAlejandro_82, Squibbles_77, Flakey_77, Exiguo_77, RemRem_79, Barbochs_77, Breezic_78, Sam12_77, Beaver_81, CinnamonToast_82, Adgers_81, Worcestershire_77, GourdThymes_78, Gorko_77, Sombrero_79, Ekhein_78, Boneham_81, Jellybones_79, John316_81, Lizzo_78, BirksAndSocks_82, Butterball_80, Msay19_82
- Track 4 : BigShaq_79, Eggsie_76, Chelms_78, PierreThree_77, Diabla_83, Dakiti_79, RoyalG_78, Linetti_78, SteveFrench_77, Crete_78, BenoitCattle_78
- Track 5 : PokyPuppy_75
- Track 6 : Damp_76, GalacticEye_76, Teal_75, Berries_76, Hello_75, Charianelly_76, Hail2Pitt_74, Harambe_75, Guillaume_75, Luker_77, Anamika_75, Jams_76, Lahirium_75, Kaseim_75, Newt_77, Lidong_76, MrWormie_76, Woes_75, Noevie_75, Jormungandr_75, Bianmat_76, Shelley_76, Minos_77, Nimi13_75, Sticker17_76
- Track 7 : Benczkowski14_75, Kvothe_74, Teatealatte_76, Niagara_75, Hollow_76, Teech_73, Tredge_75
- Track 8 : Philon9_71, Vitaenoi_71
- Track 9 : Katyusha_74
- Track 10 : ASerpRocky_70
- Track 11 : Demosthenes_70
- Track 12 : DocB7_067

Summary of Final Annotations (See graph section above for start numbers):

The start number called the most often in the published annotations is 11, it was called in 68 of the 69 non-draft genes in the pham.

Genes that call this "Most Annotated" start:

- ASerpRocky_70, Adgers_81, Amore2_77, Anamika_75, Austin_76, Barbochs_77, Beaver_81, Benczkowski14_75, BenoitCattle_78, Berries_76, Bianmat_76, BigShaq_79, BirksAndSocks_82, Boneham_81, Breezic_78, Butterball_80, CathyBurgh_77, Charianelly_76, Chelms_78, CinnamonToast_82, Crete_78,

Dakiti_79, Damp_76, Demosthenes_70, Diabla_83, DocB7_067, Eggsie_76, Ekhein_78, Exiguo_77, FelixAlejandro_82, Flakey_77, GMA7_66, GTE7_65, GalacticEye_76, Gorko_77, GourdThymes_78, Guillaume_75, Hail2Pitt_74, Harambe_75, HayZem_77, Hello_75, Hollow_76, Hotorobo_78, Jams_76, Jellybones_79, John316_81, Jormungandr_75, Kaseim_75, Kvothe_74, Lahirium_75, Lidong_76, Linetti_78, Lizzo_78, Luker_77, Minos_77, Monty_77, MrWormie_76, Msay19_82, Neoevie_75, Newt_77, Niagara_75, Nimi13_75, Philon9_71, PierreThree_77, PokyPuppy_75, Poland_82, RemRem_79, RoyalG_78, Sam12_77, Shelley_76, Sombrero_79, Squibbles_77, SteveFrench_77, Sticker17_76, Teal_75, Teatealatte_76, Teech_73, Tredge_75, Vitaenoi_71, Woes_75, Worcestershire_77,

Genes that have the "Most Annotated" start but do not call it:

- Katyusha_74,

Genes that do not have the "Most Annotated" start:

-

Summary by start number:

Start 6:

- Found in 8 of 82 (9.8%) of genes in pham
- Manual Annotations of this start: 1 of 69
- Called 12.5% of time when present
- Phage (with cluster) where this start called: Katyusha_74 (CS4),

Start 11:

- Found in 82 of 82 (100.0%) of genes in pham
- Manual Annotations of this start: 68 of 69
- Called 98.8% of time when present
- Phage (with cluster) where this start called: ASerpRocky_70 (CS4), Adgers_81 (CS2), Amore2_77 (CS1), Anamika_75 (CS3), Austin_76 (CS1), Barbochs_77 (CS2), Beaver_81 (CS2), Benczkowski14_75 (CS4), BenoitCattle_78 (CS2), Berries_76 (CS3), Bianmat_76 (CS3), BigShaq_79 (CS2), BirksAndSocks_82 (CS2), Boneham_81 (CS2), Breezic_78 (CS2), Butterball_80 (CS2), CathyBurgh_77 (CS2), Charianelly_76 (CS3), Chelms_78 (CS2), CinnamonToast_82 (CS2), Crete_78 (CS2), Dakiti_79 (CS2), Damp_76 (CS3), Demosthenes_70 (CS4), Diabla_83 (CS2), DocB7_067 (singleton), Eggsie_76 (CS2), Ekhein_78 (CS2), Exiguo_77 (CS2), FelixAlejandro_82 (CS2), Flakey_77 (CS2), GMA7_66 (CS1), GTE7_65 (CS1), GalacticEye_76 (CS3), Gorko_77 (CS2), GourdThymes_78 (CS2), Guillaume_75 (CS3), Hail2Pitt_74 (CS3), Harambe_75 (CS3), HayZem_77 (CS1), Hello_75 (CS3), Hollow_76 (CS4), Hotorobo_78 (CS2), Jams_76 (CS3), Jellybones_79 (CS2), John316_81 (CS2), Jormungandr_75 (CS3), Kaseim_75 (CS3), Kvothe_74 (CS4), Lahirium_75 (CS3), Lidong_76 (CS3), Linetti_78 (CS2), Lizzo_78 (CS2), Luker_77 (CS3), Minos_77 (CS3), Monty_77 (CS2), MrWormie_76 (CS3), Msay19_82 (CS2), Neoevie_75 (CS3), Newt_77 (CS3), Niagara_75 (CS4), Nimi13_75 (CS3), Philon9_71 (CS4), PierreThree_77 (CS2), PokyPuppy_75 (CS2), Poland_82 (CS2), RemRem_79 (CS2), RoyalG_78 (CS2), Sam12_77 (CS2), Shelley_76 (CS3), Sombrero_79 (CS2), Squibbles_77 (CS2), SteveFrench_77 (CS2), Sticker17_76 (CS3), Teal_75 (CS3), Teatealatte_76 (CS4), Teech_73 (CS4), Tredge_75 (CS4), Vitaenoi_71 (CS4), Woes_75 (CS3), Worcestershire_77 (CS2),

Summary by clusters:

There are 5 clusters represented in this pham: CS4, singleton, CS1, CS3, CS2,

Info for manual annotations of cluster CS1:

- Start number 11 was manually annotated 3 times for cluster CS1.

Info for manual annotations of cluster CS2:

- Start number 11 was manually annotated 33 times for cluster CS2.

Info for manual annotations of cluster CS3:

- Start number 11 was manually annotated 24 times for cluster CS3.

Info for manual annotations of cluster CS4:

- Start number 6 was manually annotated 1 time for cluster CS4.
- Start number 11 was manually annotated 8 times for cluster CS4.

Gene Information:

Gene: ASerpRocky_70 Start: 60439, Stop: 59993, Start Num: 11

Candidate Starts for ASerpRocky_70:

(3, 60514), (8, 60496), (Start: 11 @60439 has 68 MA's), (19, 60280), (25, 60169), (28, 60130),

Gene: Adgers_81 Start: 61172, Stop: 60744, Start Num: 11

Candidate Starts for Adgers_81:

(Start: 11 @61172 has 68 MA's), (20, 61016), (22, 60968), (23, 60962), (25, 60908), (28, 60869),

Gene: Amore2_77 Start: 60184, Stop: 59762, Start Num: 11

Candidate Starts for Amore2_77:

(Start: 11 @60184 has 68 MA's), (15, 60133), (16, 60088), (18, 60067), (21, 59995), (23, 59971), (24, 59932), (28, 59878),

Gene: Anamika_75 Start: 61442, Stop: 61017, Start Num: 11

Candidate Starts for Anamika_75:

(Start: 11 @61442 has 68 MA's), (13, 61418), (23, 61232), (24, 61193), (25, 61178), (28, 61139),

Gene: Austin_76 Start: 60182, Stop: 59760, Start Num: 11

Candidate Starts for Austin_76:

(Start: 11 @60182 has 68 MA's), (15, 60131), (16, 60086), (18, 60065), (21, 59993), (23, 59969), (24, 59930), (28, 59876),

Gene: Barbochs_77 Start: 60548, Stop: 60120, Start Num: 11

Candidate Starts for Barbochs_77:

(Start: 11 @60548 has 68 MA's), (20, 60392), (22, 60344), (23, 60338), (25, 60284), (28, 60245),

Gene: Beaver_81 Start: 62492, Stop: 62064, Start Num: 11

Candidate Starts for Beaver_81:

(Start: 11 @62492 has 68 MA's), (20, 62336), (22, 62288), (23, 62282), (25, 62228), (28, 62189),

Gene: Benczkowski14_75 Start: 61637, Stop: 61191, Start Num: 11

Candidate Starts for Benczkowski14_75:

(Start: 6 @61700 has 1 MA's), (9, 61691), (Start: 11 @61637 has 68 MA's), (19, 61478), (25, 61367), (28, 61328),

Gene: BenoitCattle_78 Start: 61210, Stop: 60782, Start Num: 11
Candidate Starts for BenoitCattle_78:
(Start: 11 @61210 has 68 MA's), (20, 61054), (23, 61000), (24, 60961), (25, 60946), (28, 60907),

Gene: Berries_76 Start: 61414, Stop: 60989, Start Num: 11
Candidate Starts for Berries_76:
(Start: 11 @61414 has 68 MA's), (13, 61390), (23, 61204), (24, 61165), (25, 61150), (28, 61111),

Gene: Bianmat_76 Start: 61454, Stop: 61029, Start Num: 11
Candidate Starts for Bianmat_76:
(Start: 11 @61454 has 68 MA's), (13, 61430), (23, 61244), (24, 61205), (25, 61190), (28, 61151),

Gene: BigShaq_79 Start: 61382, Stop: 60954, Start Num: 11
Candidate Starts for BigShaq_79:
(Start: 11 @61382 has 68 MA's), (20, 61226), (23, 61172), (24, 61133), (25, 61118), (28, 61079),

Gene: BirksAndSocks_82 Start: 62615, Stop: 62187, Start Num: 11
Candidate Starts for BirksAndSocks_82:
(Start: 11 @62615 has 68 MA's), (20, 62459), (22, 62411), (23, 62405), (25, 62351), (28, 62312),

Gene: Boneham_81 Start: 62540, Stop: 62112, Start Num: 11
Candidate Starts for Boneham_81:
(Start: 11 @62540 has 68 MA's), (20, 62384), (22, 62336), (23, 62330), (25, 62276), (28, 62237),

Gene: Breezic_78 Start: 60759, Stop: 60331, Start Num: 11
Candidate Starts for Breezic_78:
(Start: 11 @60759 has 68 MA's), (20, 60603), (22, 60555), (23, 60549), (25, 60495), (28, 60456),

Gene: Butterball_80 Start: 62545, Stop: 62117, Start Num: 11
Candidate Starts for Butterball_80:
(Start: 11 @62545 has 68 MA's), (20, 62389), (22, 62341), (23, 62335), (25, 62281), (28, 62242),

Gene: CathyBurgh_77 Start: 61279, Stop: 60851, Start Num: 11
Candidate Starts for CathyBurgh_77:
(Start: 11 @61279 has 68 MA's), (20, 61123), (22, 61075), (23, 61069), (25, 61015), (28, 60976),

Gene: Charianelly_76 Start: 61164, Stop: 60739, Start Num: 11
Candidate Starts for Charianelly_76:
(Start: 11 @61164 has 68 MA's), (13, 61140), (23, 60954), (24, 60915), (25, 60900), (28, 60861),

Gene: Chelms_78 Start: 61312, Stop: 60884, Start Num: 11
Candidate Starts for Chelms_78:
(Start: 11 @61312 has 68 MA's), (20, 61156), (23, 61102), (24, 61063), (25, 61048), (28, 61009),

Gene: CinnamonToast_82 Start: 62620, Stop: 62192, Start Num: 11
Candidate Starts for CinnamonToast_82:
(Start: 11 @62620 has 68 MA's), (20, 62464), (22, 62416), (23, 62410), (25, 62356), (28, 62317),

Gene: Crete_78 Start: 61440, Stop: 61012, Start Num: 11
Candidate Starts for Crete_78:
(Start: 11 @61440 has 68 MA's), (20, 61284), (23, 61230), (24, 61191), (25, 61176), (28, 61137),

Gene: Dakiti_79 Start: 62110, Stop: 61682, Start Num: 11
Candidate Starts for Dakiti_79:
(Start: 11 @62110 has 68 MA's), (20, 61954), (23, 61900), (24, 61861), (25, 61846), (28, 61807),

Gene: Damp_76 Start: 60328, Stop: 59903, Start Num: 11
Candidate Starts for Damp_76:
(Start: 11 @60328 has 68 MA's), (13, 60304), (23, 60118), (24, 60079), (25, 60064), (28, 60025),

Gene: Demosthenes_70 Start: 60413, Stop: 59967, Start Num: 11
Candidate Starts for Demosthenes_70:
(3, 60488), (8, 60470), (Start: 11 @60413 has 68 MA's), (19, 60254), (25, 60143), (28, 60104),

Gene: Diabla_83 Start: 62578, Stop: 62159, Start Num: 11
Candidate Starts for Diabla_83:
(Start: 11 @62578 has 68 MA's), (20, 62422), (23, 62368), (24, 62329), (25, 62314), (28, 62275),

Gene: DocB7_067 Start: 52522, Stop: 52001, Start Num: 11
Candidate Starts for DocB7_067:
(1, 52747), (2, 52609), (4, 52600), (Start: 11 @52522 has 68 MA's), (17, 52390), (24, 52255), (26, 52219), (29, 52126),

Gene: Eggsie_76 Start: 60045, Stop: 59626, Start Num: 11
Candidate Starts for Eggsie_76:
(Start: 11 @60045 has 68 MA's), (20, 59889), (23, 59835), (24, 59796), (25, 59781), (28, 59742),

Gene: Ekhein_78 Start: 60449, Stop: 60021, Start Num: 11
Candidate Starts for Ekhein_78:
(Start: 11 @60449 has 68 MA's), (20, 60293), (22, 60245), (23, 60239), (25, 60185), (28, 60146),

Gene: Exiguo_77 Start: 60456, Stop: 60028, Start Num: 11
Candidate Starts for Exiguo_77:
(Start: 11 @60456 has 68 MA's), (20, 60300), (22, 60252), (23, 60246), (25, 60192), (28, 60153),

Gene: FelixAlejandro_82 Start: 62970, Stop: 62542, Start Num: 11
Candidate Starts for FelixAlejandro_82:
(Start: 11 @62970 has 68 MA's), (20, 62814), (22, 62766), (23, 62760), (25, 62706), (28, 62667),

Gene: Flakey_77 Start: 61265, Stop: 60837, Start Num: 11
Candidate Starts for Flakey_77:
(Start: 11 @61265 has 68 MA's), (20, 61109), (22, 61061), (23, 61055), (25, 61001), (28, 60962),

Gene: GMA7_66 Start: 54399, Stop: 53977, Start Num: 11
Candidate Starts for GMA7_66:
(Start: 11 @54399 has 68 MA's), (15, 54348), (16, 54303), (18, 54282), (21, 54210), (23, 54186), (24, 54147), (28, 54093),

Gene: GTE7_65 Start: 54429, Stop: 54007, Start Num: 11
Candidate Starts for GTE7_65:
(Start: 11 @54429 has 68 MA's), (15, 54378), (16, 54333), (18, 54312), (21, 54240), (23, 54216), (24, 54177), (28, 54123),

Gene: GalacticEye_76 Start: 61125, Stop: 60700, Start Num: 11
Candidate Starts for GalacticEye_76:

(Start: 11 @61125 has 68 MA's), (13, 61101), (23, 60915), (24, 60876), (25, 60861), (28, 60822),

Gene: Gorko_77 Start: 60366, Stop: 59938, Start Num: 11

Candidate Starts for Gorko_77:

(Start: 11 @60366 has 68 MA's), (20, 60210), (22, 60162), (23, 60156), (25, 60102), (28, 60063),

Gene: GourdThymes_78 Start: 61306, Stop: 60878, Start Num: 11

Candidate Starts for GourdThymes_78:

(Start: 11 @61306 has 68 MA's), (20, 61150), (22, 61102), (23, 61096), (25, 61042), (28, 61003),

Gene: Guillaume_75 Start: 61175, Stop: 60750, Start Num: 11

Candidate Starts for Guillaume_75:

(Start: 11 @61175 has 68 MA's), (13, 61151), (23, 60965), (24, 60926), (25, 60911), (28, 60872),

Gene: Hail2Pitt_74 Start: 61651, Stop: 61226, Start Num: 11

Candidate Starts for Hail2Pitt_74:

(Start: 11 @61651 has 68 MA's), (13, 61627), (23, 61441), (24, 61402), (25, 61387), (28, 61348),

Gene: Harambe_75 Start: 61442, Stop: 61017, Start Num: 11

Candidate Starts for Harambe_75:

(Start: 11 @61442 has 68 MA's), (13, 61418), (23, 61232), (24, 61193), (25, 61178), (28, 61139),

Gene: HayZem_77 Start: 60182, Stop: 59760, Start Num: 11

Candidate Starts for HayZem_77:

(Start: 11 @60182 has 68 MA's), (15, 60131), (16, 60086), (18, 60065), (21, 59993), (23, 59969), (24, 59930), (28, 59876),

Gene: Hello_75 Start: 61404, Stop: 60979, Start Num: 11

Candidate Starts for Hello_75:

(Start: 11 @61404 has 68 MA's), (13, 61380), (23, 61194), (24, 61155), (25, 61140), (28, 61101),

Gene: Hollow_76 Start: 61806, Stop: 61360, Start Num: 11

Candidate Starts for Hollow_76:

(Start: 6 @61869 has 1 MA's), (9, 61860), (Start: 11 @61806 has 68 MA's), (19, 61647), (25, 61536), (28, 61497),

Gene: Hotorobo_78 Start: 61329, Stop: 60901, Start Num: 11

Candidate Starts for Hotorobo_78:

(Start: 11 @61329 has 68 MA's), (20, 61173), (22, 61125), (23, 61119), (25, 61065), (28, 61026),

Gene: Jams_76 Start: 60614, Stop: 60189, Start Num: 11

Candidate Starts for Jams_76:

(Start: 11 @60614 has 68 MA's), (13, 60590), (23, 60404), (24, 60365), (25, 60350), (28, 60311),

Gene: Jellybones_79 Start: 62254, Stop: 61826, Start Num: 11

Candidate Starts for Jellybones_79:

(Start: 11 @62254 has 68 MA's), (20, 62098), (22, 62050), (23, 62044), (25, 61990), (28, 61951),

Gene: John316_81 Start: 62417, Stop: 61989, Start Num: 11

Candidate Starts for John316_81:

(Start: 11 @62417 has 68 MA's), (20, 62261), (22, 62213), (23, 62207), (25, 62153), (28, 62114),

Gene: Jormungandr_75 Start: 61157, Stop: 60732, Start Num: 11

Candidate Starts for Jormungandr_75:

(Start: 11 @61157 has 68 MA's), (13, 61133), (23, 60947), (24, 60908), (25, 60893), (28, 60854),

Gene: Kaseim_75 Start: 60599, Stop: 60174, Start Num: 11

Candidate Starts for Kaseim_75:

(Start: 11 @60599 has 68 MA's), (13, 60575), (23, 60389), (24, 60350), (25, 60335), (28, 60296),

Gene: Katyusha_74 Start: 61700, Stop: 61191, Start Num: 6

Candidate Starts for Katyusha_74:

(Start: 6 @61700 has 1 MA's), (9, 61691), (Start: 11 @61637 has 68 MA's), (19, 61478), (25, 61367), (28, 61328),

Gene: Kvothe_74 Start: 61479, Stop: 61033, Start Num: 11

Candidate Starts for Kvothe_74:

(Start: 6 @61542 has 1 MA's), (9, 61533), (Start: 11 @61479 has 68 MA's), (19, 61320), (25, 61209), (28, 61170),

Gene: Lahirium_75 Start: 61679, Stop: 61254, Start Num: 11

Candidate Starts for Lahirium_75:

(Start: 11 @61679 has 68 MA's), (13, 61655), (23, 61469), (24, 61430), (25, 61415), (28, 61376),

Gene: Lidong_76 Start: 61414, Stop: 60989, Start Num: 11

Candidate Starts for Lidong_76:

(Start: 11 @61414 has 68 MA's), (13, 61390), (23, 61204), (24, 61165), (25, 61150), (28, 61111),

Gene: Linetti_78 Start: 62334, Stop: 61906, Start Num: 11

Candidate Starts for Linetti_78:

(Start: 11 @62334 has 68 MA's), (20, 62178), (23, 62124), (24, 62085), (25, 62070), (28, 62031),

Gene: Lizzo_78 Start: 61279, Stop: 60851, Start Num: 11

Candidate Starts for Lizzo_78:

(Start: 11 @61279 has 68 MA's), (20, 61123), (22, 61075), (23, 61069), (25, 61015), (28, 60976),

Gene: Luker_77 Start: 61632, Stop: 61207, Start Num: 11

Candidate Starts for Luker_77:

(Start: 11 @61632 has 68 MA's), (13, 61608), (23, 61422), (24, 61383), (25, 61368), (28, 61329),

Gene: Minos_77 Start: 61156, Stop: 60731, Start Num: 11

Candidate Starts for Minos_77:

(Start: 11 @61156 has 68 MA's), (13, 61132), (23, 60946), (24, 60907), (25, 60892), (28, 60853),

Gene: Monty_77 Start: 60492, Stop: 60064, Start Num: 11

Candidate Starts for Monty_77:

(Start: 11 @60492 has 68 MA's), (20, 60336), (22, 60288), (23, 60282), (25, 60228), (28, 60189),

Gene: MrWormie_76 Start: 60317, Stop: 59892, Start Num: 11

Candidate Starts for MrWormie_76:

(Start: 11 @60317 has 68 MA's), (13, 60293), (23, 60107), (24, 60068), (25, 60053), (28, 60014),

Gene: Msay19_82 Start: 62856, Stop: 62428, Start Num: 11

Candidate Starts for Msay19_82:

(Start: 11 @62856 has 68 MA's), (20, 62700), (22, 62652), (23, 62646), (25, 62592), (28, 62553),

Gene: Neoevie_75 Start: 61418, Stop: 60993, Start Num: 11
Candidate Starts for Neoevie_75:
(Start: 11 @61418 has 68 MA's), (13, 61394), (23, 61208), (24, 61169), (25, 61154), (28, 61115),

Gene: Newt_77 Start: 61646, Stop: 61221, Start Num: 11
Candidate Starts for Newt_77:
(Start: 11 @61646 has 68 MA's), (13, 61622), (23, 61436), (24, 61397), (25, 61382), (28, 61343),

Gene: Niagara_75 Start: 61570, Stop: 61124, Start Num: 11
Candidate Starts for Niagara_75:
(Start: 6 @61633 has 1 MA's), (9, 61624), (Start: 11 @61570 has 68 MA's), (19, 61411), (25, 61300),
(28, 61261),

Gene: Nimi13_75 Start: 61165, Stop: 60740, Start Num: 11
Candidate Starts for Nimi13_75:
(Start: 11 @61165 has 68 MA's), (13, 61141), (23, 60955), (24, 60916), (25, 60901), (28, 60862),

Gene: Philon9_71 Start: 62080, Stop: 61646, Start Num: 11
Candidate Starts for Philon9_71:
(9, 62140), (10, 62131), (Start: 11 @62080 has 68 MA's), (12, 62068), (14, 62047), (19, 61921), (20,
61918), (25, 61810), (27, 61774), (28, 61771),

Gene: PierreThree_77 Start: 61741, Stop: 61313, Start Num: 11
Candidate Starts for PierreThree_77:
(Start: 11 @61741 has 68 MA's), (20, 61585), (23, 61531), (24, 61492), (25, 61477), (28, 61438),

Gene: PokyPuppy_75 Start: 61009, Stop: 60587, Start Num: 11
Candidate Starts for PokyPuppy_75:
(5, 61081), (7, 61075), (Start: 11 @61009 has 68 MA's), (23, 60799), (25, 60745), (28, 60706),

Gene: Poland_82 Start: 62835, Stop: 62407, Start Num: 11
Candidate Starts for Poland_82:
(Start: 11 @62835 has 68 MA's), (20, 62679), (22, 62631), (23, 62625), (25, 62571), (28, 62532),

Gene: RemRem_79 Start: 60432, Stop: 60004, Start Num: 11
Candidate Starts for RemRem_79:
(Start: 11 @60432 has 68 MA's), (20, 60276), (22, 60228), (23, 60222), (25, 60168), (28, 60129),

Gene: RoyalG_78 Start: 61019, Stop: 60600, Start Num: 11
Candidate Starts for RoyalG_78:
(Start: 11 @61019 has 68 MA's), (20, 60863), (23, 60809), (24, 60770), (25, 60755), (28, 60716),

Gene: Sam12_77 Start: 60456, Stop: 60028, Start Num: 11
Candidate Starts for Sam12_77:
(Start: 11 @60456 has 68 MA's), (20, 60300), (22, 60252), (23, 60246), (25, 60192), (28, 60153),

Gene: Shelley_76 Start: 60641, Stop: 60216, Start Num: 11
Candidate Starts for Shelley_76:
(Start: 11 @60641 has 68 MA's), (13, 60617), (23, 60431), (24, 60392), (25, 60377), (28, 60338),

Gene: Sombrero_79 Start: 61046, Stop: 60618, Start Num: 11
Candidate Starts for Sombrero_79:
(Start: 11 @61046 has 68 MA's), (20, 60890), (22, 60842), (23, 60836), (25, 60782), (28, 60743),

Gene: Squibbles_77 Start: 61309, Stop: 60881, Start Num: 11

Candidate Starts for Squibbles_77:

(Start: 11 @61309 has 68 MA's), (20, 61153), (22, 61105), (23, 61099), (25, 61045), (28, 61006),

Gene: SteveFrench_77 Start: 61259, Stop: 60840, Start Num: 11

Candidate Starts for SteveFrench_77:

(Start: 11 @61259 has 68 MA's), (20, 61103), (23, 61049), (24, 61010), (25, 60995), (28, 60956),

Gene: Sticker17_76 Start: 61129, Stop: 60704, Start Num: 11

Candidate Starts for Sticker17_76:

(Start: 11 @61129 has 68 MA's), (13, 61105), (23, 60919), (24, 60880), (25, 60865), (28, 60826),

Gene: Teal_75 Start: 61623, Stop: 61198, Start Num: 11

Candidate Starts for Teal_75:

(Start: 11 @61623 has 68 MA's), (13, 61599), (23, 61413), (24, 61374), (25, 61359), (28, 61320),

Gene: Teatealatte_76 Start: 61467, Stop: 61021, Start Num: 11

Candidate Starts for Teatealatte_76:

(Start: 6 @61530 has 1 MA's), (9, 61521), (Start: 11 @61467 has 68 MA's), (19, 61308), (25, 61197), (28, 61158),

Gene: Teech_73 Start: 61286, Stop: 60837, Start Num: 11

Candidate Starts for Teech_73:

(Start: 6 @61349 has 1 MA's), (9, 61340), (Start: 11 @61286 has 68 MA's), (19, 61127), (25, 61016), (28, 60977),

Gene: Tredge_75 Start: 61467, Stop: 61021, Start Num: 11

Candidate Starts for Tredge_75:

(Start: 6 @61530 has 1 MA's), (9, 61521), (Start: 11 @61467 has 68 MA's), (19, 61308), (25, 61197), (28, 61158),

Gene: Vitaenoi_71 Start: 62064, Stop: 61630, Start Num: 11

Candidate Starts for Vitaenoi_71:

(9, 62124), (10, 62115), (Start: 11 @62064 has 68 MA's), (12, 62052), (14, 62031), (19, 61905), (20, 61902), (25, 61794), (27, 61758), (28, 61755),

Gene: Woes_75 Start: 61674, Stop: 61249, Start Num: 11

Candidate Starts for Woes_75:

(Start: 11 @61674 has 68 MA's), (13, 61650), (23, 61464), (24, 61425), (25, 61410), (28, 61371),

Gene: Worcestershire_77 Start: 60440, Stop: 60012, Start Num: 11

Candidate Starts for Worcestershire_77:

(Start: 11 @60440 has 68 MA's), (20, 60284), (22, 60236), (23, 60230), (25, 60176), (28, 60137),