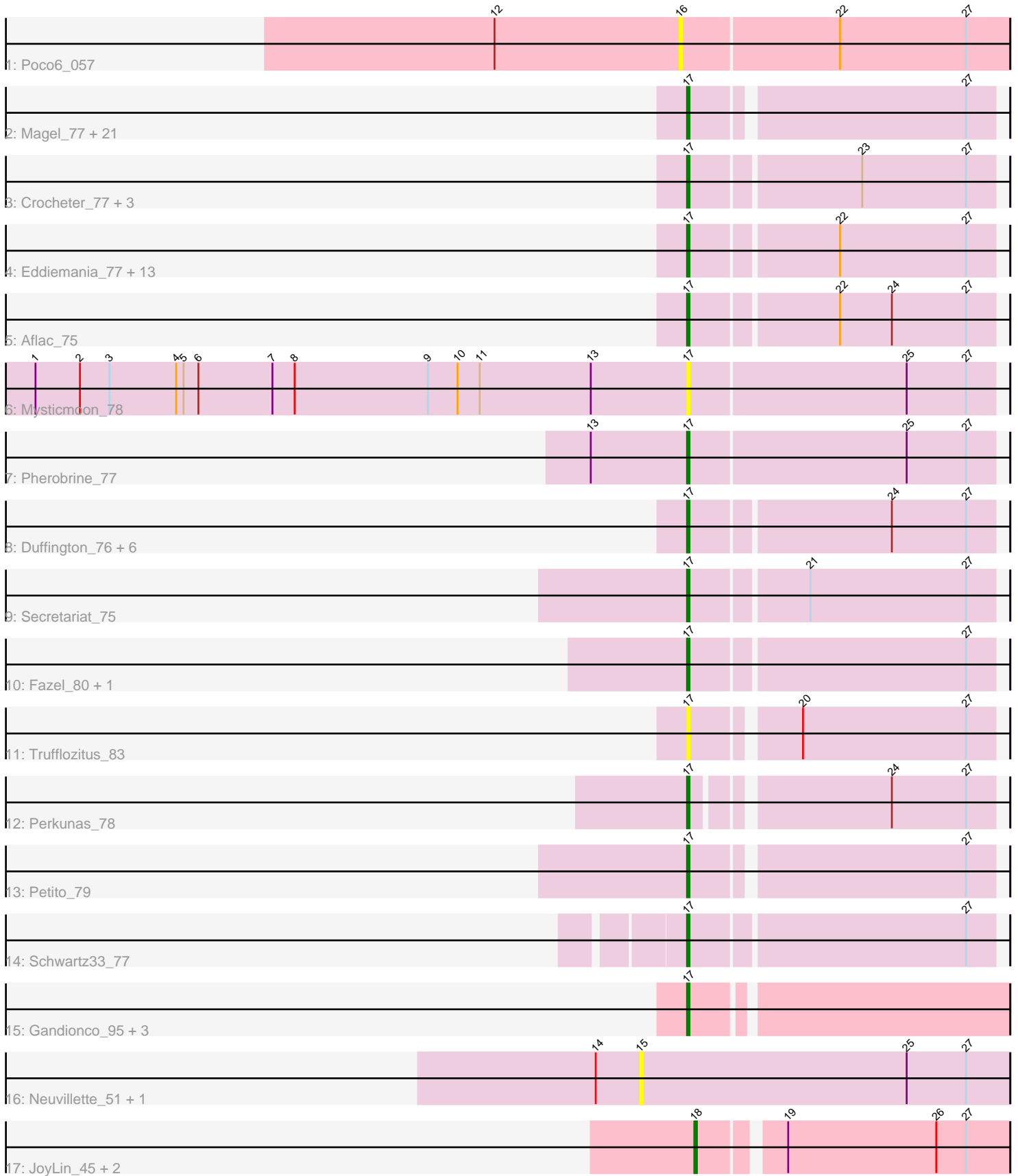


Pham 223120



Note: Tracks are now grouped by subcluster and scaled. Switching in subcluster is indicated by changes in track color. Track scale is now set by default to display the region 30 bp upstream of start 1 to 30 bp downstream of the last possible start. If this default region is judged to be packed too tightly with annotated starts, the track will be further scaled to only show that region of the ORF with annotated starts. This action will be indicated by adding "Zoomed" to the title. For starts, yellow indicates the location of called starts comprised solely of Glimmer/GeneMark auto-annotations, green indicates the location of called starts with at least 1 manual gene annotation.

Pham 223120 Report

This analysis was run 03/28/25 on database version 593.

Pham number 223120 has 67 members, 17 are drafts.

Phages represented in each track:

- Track 1 : Poco6_057
- Track 2 : Magel_77, Odesza_75, Avazak_79, Mossy_77, AlainaMarie_75, Captrips_77, JulesRay_80, Roney_75, Kerry_75, Hydrus_76, Tanis_76, Hortihabitatio_79, Capybara_76, Gill_76, OhMyWard_73, Gravy_75, Kenosha_75, NoPickles_77, Artorias_78, Talon44_81, Dancer_81, FortCran_78
- Track 3 : Crocheter_77, BetterYeti_79, Gusicorn_80, ShaggyRogers_79
- Track 4 : Eddiemania_77, Figliar_74, Zeph_78, EndAve_77, Vardy_75, Chikenjars_75, TenaciousP_76, Citrus_76, Rickmore_74, Phepper_77, Burley_76, MajinBuu_77, Jodelie19_74, BluerMoon_74
- Track 5 : Aflac_75
- Track 6 : Mysticmoon_78
- Track 7 : Pherobrine_77
- Track 8 : Duffington_76, Madvan_76, Nithya_75, Untouchable_78, OlgasClover_77, Nadmeg_76, Runhaar_75
- Track 9 : Secretariat_75
- Track 10 : Fazel_80, Conley_75
- Track 11 : Trufflozitus_83
- Track 12 : Perkunas_78
- Track 13 : Petite_79
- Track 14 : Schwartz33_77
- Track 15 : Gandionco_95, Paella_99, Qui_99, Elver_97
- Track 16 : Neuville_51, Annabelle_51
- Track 17 : JoyLin_45, Eevee_45, Yotsuba_45

Summary of Final Annotations (See graph section above for start numbers):

The start number called the most often in the published annotations is 17, it was called in 47 of the 50 non-draft genes in the pham.

Genes that call this "Most Annotated" start:

- Aflac_75, AlainaMarie_75, Artorias_78, Avazak_79, BetterYeti_79, BluerMoon_74, Burley_76, Captrips_77, Capybara_76, Chikenjars_75, Citrus_76, Conley_75, Crocheter_77, Dancer_81, Duffington_76, Eddiemania_77, Elver_97, EndAve_77, Fazel_80, Figliar_74, FortCran_78, Gandionco_95, Gill_76, Gravy_75, Gusicorn_80,

Hortihabitatio_79, Hydrus_76, Jodelie19_74, JulesRay_80, Kenosha_75, Kerry_75, Madvan_76, Magel_77, MajinBuu_77, Mossy_77, Mysticmoon_78, Nadmeg_76, Nithya_75, NoPickles_77, Odesza_75, OhMyWard_73, OlgasClover_77, Paella_99, Perkunas_78, Petite_79, Phepper_77, Pherobrine_77, Qui_99, Rickmore_74, Roney_75, Runhaar_75, Schwartz33_77, Secretariat_75, ShaggyRogers_79, Talon44_81, Tanis_76, TenaciousP_76, Trufflozitus_83, Untouchable_78, Vardy_75, Zeph_78,

Genes that have the "Most Annotated" start but do not call it:

-

Genes that do not have the "Most Annotated" start:

- AnnabelLee_51, Eevee_45, JoyLin_45, Neuville_51, Poco6_057, Yotsuba_45,

Summary by start number:

Start 15:

- Found in 2 of 67 (3.0%) of genes in pham
- No Manual Annotations of this start.
- Called 100.0% of time when present
- Phage (with cluster) where this start called: AnnabelLee_51 (FR), Neuville_51 (FR),

Start 16:

- Found in 1 of 67 (1.5%) of genes in pham
- No Manual Annotations of this start.
- Called 100.0% of time when present
- Phage (with cluster) where this start called: Poco6_057 (CC),

Start 17:

- Found in 61 of 67 (91.0%) of genes in pham
- Manual Annotations of this start: 47 of 50
- Called 100.0% of time when present
- Phage (with cluster) where this start called: Aflac_75 (DJ), AlainaMarie_75 (DJ), Artorias_78 (DJ), Avazak_79 (DJ), BetterYeti_79 (DJ), BluerMoon_74 (DJ), Burley_76 (DJ), Captrips_77 (DJ), Copybara_76 (DJ), Chikenjars_75 (DJ), Citrus_76 (DJ), Conley_75 (DJ), Crocheter_77 (DJ), Dancer_81 (DJ), Duffington_76 (DJ), Eddiemania_77 (DJ), Elver_97 (FK), EndAve_77 (DJ), Fazel_80 (DJ), Figliar_74 (DJ), FortCran_78 (DJ), Gandionco_95 (FK), Gill_76 (DJ), Gravy_75 (DJ), Gusicorn_80 (DJ), Hortihabitatio_79 (DJ), Hydrus_76 (DJ), Jodelie19_74 (DJ), JulesRay_80 (DJ), Kenosha_75 (DJ), Kerry_75 (DJ), Madvan_76 (DJ), Magel_77 (DJ), MajinBuu_77 (DJ), Mossy_77 (DJ), Mysticmoon_78 (DJ), Nadmeg_76 (DJ), Nithya_75 (DJ), NoPickles_77 (DJ), Odesza_75 (DJ), OhMyWard_73 (DJ), OlgasClover_77 (DJ), Paella_99 (FK), Perkunas_78 (DJ), Petite_79 (DJ), Phepper_77 (DJ), Pherobrine_77 (DJ), Qui_99 (FK), Rickmore_74 (DJ), Roney_75 (DJ), Runhaar_75 (DJ), Schwartz33_77 (DJ), Secretariat_75 (DJ), ShaggyRogers_79 (DJ), Talon44_81 (DJ), Tanis_76 (DJ), TenaciousP_76 (DJ), Trufflozitus_83 (DJ), Untouchable_78 (DJ), Vardy_75 (DJ), Zeph_78 (DJ),

Start 18:

- Found in 3 of 67 (4.5%) of genes in pham
- Manual Annotations of this start: 3 of 50
- Called 100.0% of time when present

- Phage (with cluster) where this start called: Eevee_45 (JA), JoyLin_45 (JA), Yotsuba_45 (JA),

Summary by clusters:

There are 5 clusters represented in this pham: CC, FR, FK, DJ, JA,

Info for manual annotations of cluster DJ:

- Start number 17 was manually annotated 45 times for cluster DJ.

Info for manual annotations of cluster FK:

- Start number 17 was manually annotated 2 times for cluster FK.

Info for manual annotations of cluster JA:

- Start number 18 was manually annotated 3 times for cluster JA.

Gene Information:

Gene: Aflac_75 Start: 51259, Stop: 51378, Start Num: 17

Candidate Starts for Aflac_75:

(Start: 17 @51259 has 47 MA's), (22, 51316), (24, 51337), (27, 51367),

Gene: AlainaMarie_75 Start: 51316, Stop: 51435, Start Num: 17

Candidate Starts for AlainaMarie_75:

(Start: 17 @51316 has 47 MA's), (27, 51424),

Gene: AnnabelLee_51 Start: 32582, Stop: 32433, Start Num: 15

Candidate Starts for AnnabelLee_51:

(14, 32600), (15, 32582), (25, 32474), (27, 32450),

Gene: Artorias_78 Start: 50947, Stop: 51063, Start Num: 17

Candidate Starts for Artorias_78:

(Start: 17 @50947 has 47 MA's), (27, 51052),

Gene: Avazak_79 Start: 51629, Stop: 51745, Start Num: 17

Candidate Starts for Avazak_79:

(Start: 17 @51629 has 47 MA's), (27, 51734),

Gene: BetterYeti_79 Start: 51132, Stop: 51251, Start Num: 17

Candidate Starts for BetterYeti_79:

(Start: 17 @51132 has 47 MA's), (23, 51198), (27, 51240),

Gene: BluerMoon_74 Start: 51213, Stop: 51332, Start Num: 17

Candidate Starts for BluerMoon_74:

(Start: 17 @51213 has 47 MA's), (22, 51270), (27, 51321),

Gene: Burley_76 Start: 50762, Stop: 50881, Start Num: 17

Candidate Starts for Burley_76:

(Start: 17 @50762 has 47 MA's), (22, 50819), (27, 50870),

Gene: Captrips_77 Start: 50777, Stop: 50893, Start Num: 17
Candidate Starts for Captrips_77:
(Start: 17 @50777 has 47 MA's), (27, 50882),

Gene: Capybara_76 Start: 50614, Stop: 50730, Start Num: 17
Candidate Starts for Capybara_76:
(Start: 17 @50614 has 47 MA's), (27, 50719),

Gene: Chikenjars_75 Start: 51562, Stop: 51681, Start Num: 17
Candidate Starts for Chikenjars_75:
(Start: 17 @51562 has 47 MA's), (22, 51619), (27, 51670),

Gene: Citrus_76 Start: 51612, Stop: 51731, Start Num: 17
Candidate Starts for Citrus_76:
(Start: 17 @51612 has 47 MA's), (22, 51669), (27, 51720),

Gene: Conley_75 Start: 51077, Stop: 51193, Start Num: 17
Candidate Starts for Conley_75:
(Start: 17 @51077 has 47 MA's), (27, 51182),

Gene: Crocheter_77 Start: 51226, Stop: 51345, Start Num: 17
Candidate Starts for Crocheter_77:
(Start: 17 @51226 has 47 MA's), (23, 51292), (27, 51334),

Gene: Dancer_81 Start: 50684, Stop: 50800, Start Num: 17
Candidate Starts for Dancer_81:
(Start: 17 @50684 has 47 MA's), (27, 50789),

Gene: Duffington_76 Start: 51530, Stop: 51649, Start Num: 17
Candidate Starts for Duffington_76:
(Start: 17 @51530 has 47 MA's), (24, 51608), (27, 51638),

Gene: Eddiemania_77 Start: 51804, Stop: 51923, Start Num: 17
Candidate Starts for Eddiemania_77:
(Start: 17 @51804 has 47 MA's), (22, 51861), (27, 51912),

Gene: Eevee_45 Start: 34471, Stop: 34590, Start Num: 18
Candidate Starts for Eevee_45:
(Start: 18 @34471 has 3 MA's), (19, 34501), (26, 34561), (27, 34573),

Gene: Elver_97 Start: 54542, Stop: 54664, Start Num: 17
Candidate Starts for Elver_97:
(Start: 17 @54542 has 47 MA's),

Gene: EndAve_77 Start: 51506, Stop: 51625, Start Num: 17
Candidate Starts for EndAve_77:
(Start: 17 @51506 has 47 MA's), (22, 51563), (27, 51614),

Gene: Fazel_80 Start: 51692, Stop: 51811, Start Num: 17
Candidate Starts for Fazel_80:
(Start: 17 @51692 has 47 MA's), (27, 51800),

Gene: Figliar_74 Start: 51330, Stop: 51449, Start Num: 17
Candidate Starts for Figliar_74:
(Start: 17 @51330 has 47 MA's), (22, 51387), (27, 51438),

Gene: FortCran_78 Start: 50947, Stop: 51063, Start Num: 17
Candidate Starts for FortCran_78:
(Start: 17 @50947 has 47 MA's), (27, 51052),

Gene: Gandionco_95 Start: 53398, Stop: 53520, Start Num: 17
Candidate Starts for Gandionco_95:
(Start: 17 @53398 has 47 MA's),

Gene: Gill_76 Start: 50642, Stop: 50758, Start Num: 17
Candidate Starts for Gill_76:
(Start: 17 @50642 has 47 MA's), (27, 50747),

Gene: Gravy_75 Start: 50304, Stop: 50420, Start Num: 17
Candidate Starts for Gravy_75:
(Start: 17 @50304 has 47 MA's), (27, 50409),

Gene: Gusicorn_80 Start: 51133, Stop: 51252, Start Num: 17
Candidate Starts for Gusicorn_80:
(Start: 17 @51133 has 47 MA's), (23, 51199), (27, 51241),

Gene: Hortihabitatio_79 Start: 52082, Stop: 52201, Start Num: 17
Candidate Starts for Hortihabitatio_79:
(Start: 17 @52082 has 47 MA's), (27, 52190),

Gene: Hydrus_76 Start: 51523, Stop: 51642, Start Num: 17
Candidate Starts for Hydrus_76:
(Start: 17 @51523 has 47 MA's), (27, 51631),

Gene: Jodelie19_74 Start: 52497, Stop: 52616, Start Num: 17
Candidate Starts for Jodelie19_74:
(Start: 17 @52497 has 47 MA's), (22, 52554), (27, 52605),

Gene: JoyLin_45 Start: 34591, Stop: 34710, Start Num: 18
Candidate Starts for JoyLin_45:
(Start: 18 @34591 has 3 MA's), (19, 34621), (26, 34681), (27, 34693),

Gene: JulesRay_80 Start: 51296, Stop: 51412, Start Num: 17
Candidate Starts for JulesRay_80:
(Start: 17 @51296 has 47 MA's), (27, 51401),

Gene: Kenosha_75 Start: 51351, Stop: 51470, Start Num: 17
Candidate Starts for Kenosha_75:
(Start: 17 @51351 has 47 MA's), (27, 51459),

Gene: Kerry_75 Start: 50367, Stop: 50483, Start Num: 17
Candidate Starts for Kerry_75:
(Start: 17 @50367 has 47 MA's), (27, 50472),

Gene: Madvan_76 Start: 50818, Stop: 50937, Start Num: 17

Candidate Starts for Madvan_76:
(Start: 17 @50818 has 47 MA's), (24, 50896), (27, 50926),

Gene: Magel_77 Start: 50557, Stop: 50673, Start Num: 17
Candidate Starts for Magel_77:
(Start: 17 @50557 has 47 MA's), (27, 50662),

Gene: MajinBuu_77 Start: 51712, Stop: 51831, Start Num: 17
Candidate Starts for MajinBuu_77:
(Start: 17 @51712 has 47 MA's), (22, 51769), (27, 51820),

Gene: Mossy_77 Start: 52440, Stop: 52559, Start Num: 17
Candidate Starts for Mossy_77:
(Start: 17 @52440 has 47 MA's), (27, 52548),

Gene: Mysticmoon_78 Start: 52079, Stop: 52201, Start Num: 17
Candidate Starts for Mysticmoon_78:
(1, 51815), (2, 51833), (3, 51845), (4, 51872), (5, 51875), (6, 51881), (7, 51911), (8, 51920), (9, 51974),
(10, 51986), (11, 51995), (13, 52040), (Start: 17 @52079 has 47 MA's), (25, 52166), (27, 52190),

Gene: Nadmeg_76 Start: 51821, Stop: 51940, Start Num: 17
Candidate Starts for Nadmeg_76:
(Start: 17 @51821 has 47 MA's), (24, 51899), (27, 51929),

Gene: Neuville_51 Start: 32585, Stop: 32436, Start Num: 15
Candidate Starts for Neuville_51:
(14, 32603), (15, 32585), (25, 32477), (27, 32453),

Gene: Nithya_75 Start: 51204, Stop: 51323, Start Num: 17
Candidate Starts for Nithya_75:
(Start: 17 @51204 has 47 MA's), (24, 51282), (27, 51312),

Gene: NoPickles_77 Start: 50463, Stop: 50579, Start Num: 17
Candidate Starts for NoPickles_77:
(Start: 17 @50463 has 47 MA's), (27, 50568),

Gene: Odesza_75 Start: 50501, Stop: 50617, Start Num: 17
Candidate Starts for Odesza_75:
(Start: 17 @50501 has 47 MA's), (27, 50606),

Gene: OhMyWard_73 Start: 52199, Stop: 52318, Start Num: 17
Candidate Starts for OhMyWard_73:
(Start: 17 @52199 has 47 MA's), (27, 52307),

Gene: OlgasClover_77 Start: 52120, Stop: 52239, Start Num: 17
Candidate Starts for OlgasClover_77:
(Start: 17 @52120 has 47 MA's), (24, 52198), (27, 52228),

Gene: Paella_99 Start: 55132, Stop: 55254, Start Num: 17
Candidate Starts for Paella_99:
(Start: 17 @55132 has 47 MA's),

Gene: Perkunas_78 Start: 50566, Stop: 50679, Start Num: 17

Candidate Starts for Perkunas_78:
(Start: 17 @50566 has 47 MA's), (24, 50638), (27, 50668),

Gene: Petito_79 Start: 52029, Stop: 52145, Start Num: 17
Candidate Starts for Petito_79:
(Start: 17 @52029 has 47 MA's), (27, 52134),

Gene: Phepper_77 Start: 51060, Stop: 51179, Start Num: 17
Candidate Starts for Phepper_77:
(Start: 17 @51060 has 47 MA's), (22, 51117), (27, 51168),

Gene: Pherobrine_77 Start: 52134, Stop: 52256, Start Num: 17
Candidate Starts for Pherobrine_77:
(13, 52095), (Start: 17 @52134 has 47 MA's), (25, 52221), (27, 52245),

Gene: Poco6_057 Start: 66807, Stop: 66938, Start Num: 16
Candidate Starts for Poco6_057:
(12, 66732), (16, 66807), (22, 66870), (27, 66921),

Gene: Qui_99 Start: 55132, Stop: 55254, Start Num: 17
Candidate Starts for Qui_99:
(Start: 17 @55132 has 47 MA's),

Gene: Rickmore_74 Start: 49877, Stop: 49996, Start Num: 17
Candidate Starts for Rickmore_74:
(Start: 17 @49877 has 47 MA's), (22, 49934), (27, 49985),

Gene: Roney_75 Start: 50667, Stop: 50783, Start Num: 17
Candidate Starts for Roney_75:
(Start: 17 @50667 has 47 MA's), (27, 50772),

Gene: Runhaar_75 Start: 50869, Stop: 50988, Start Num: 17
Candidate Starts for Runhaar_75:
(Start: 17 @50869 has 47 MA's), (24, 50947), (27, 50977),

Gene: Schwartz33_77 Start: 51200, Stop: 51319, Start Num: 17
Candidate Starts for Schwartz33_77:
(Start: 17 @51200 has 47 MA's), (27, 51308),

Gene: Secretariat_75 Start: 50334, Stop: 50453, Start Num: 17
Candidate Starts for Secretariat_75:
(Start: 17 @50334 has 47 MA's), (21, 50379), (27, 50442),

Gene: ShaggyRogers_79 Start: 50863, Stop: 50982, Start Num: 17
Candidate Starts for ShaggyRogers_79:
(Start: 17 @50863 has 47 MA's), (23, 50929), (27, 50971),

Gene: Talon44_81 Start: 51415, Stop: 51531, Start Num: 17
Candidate Starts for Talon44_81:
(Start: 17 @51415 has 47 MA's), (27, 51520),

Gene: Tanis_76 Start: 50487, Stop: 50603, Start Num: 17
Candidate Starts for Tanis_76:

(Start: 17 @50487 has 47 MA's), (27, 50592),

Gene: TenaciousP_76 Start: 52459, Stop: 52578, Start Num: 17

Candidate Starts for TenaciousP_76:

(Start: 17 @52459 has 47 MA's), (22, 52516), (27, 52567),

Gene: Trufflozitus_83 Start: 51300, Stop: 51416, Start Num: 17

Candidate Starts for Trufflozitus_83:

(Start: 17 @51300 has 47 MA's), (20, 51339), (27, 51405),

Gene: Untouchable_78 Start: 52057, Stop: 52176, Start Num: 17

Candidate Starts for Untouchable_78:

(Start: 17 @52057 has 47 MA's), (24, 52135), (27, 52165),

Gene: Vardy_75 Start: 50756, Stop: 50875, Start Num: 17

Candidate Starts for Vardy_75:

(Start: 17 @50756 has 47 MA's), (22, 50813), (27, 50864),

Gene: Yotsuba_45 Start: 34609, Stop: 34728, Start Num: 18

Candidate Starts for Yotsuba_45:

(Start: 18 @34609 has 3 MA's), (19, 34639), (26, 34699), (27, 34711),

Gene: Zeph_78 Start: 51894, Stop: 52013, Start Num: 17

Candidate Starts for Zeph_78:

(Start: 17 @51894 has 47 MA's), (22, 51951), (27, 52002),