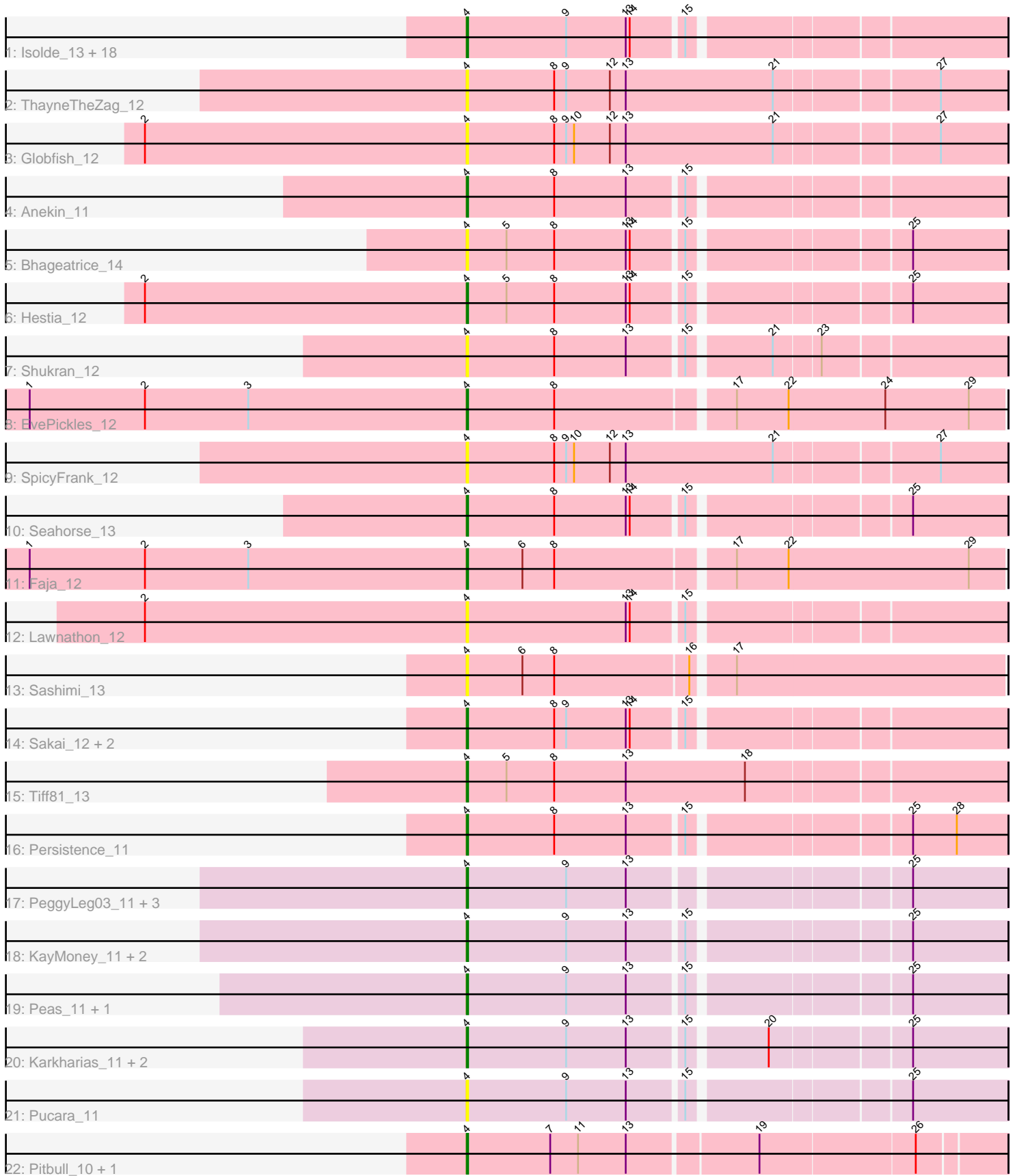


Pham 223199



Note: Tracks are now grouped by subcluster and scaled. Switching in subcluster is indicated by changes in track color. Track scale is now set by default to display the region 30 bp upstream of start 1 to 30 bp downstream of the last possible start. If this default region is judged to be packed too tightly with annotated starts, the track will be further scaled to only show that region of the ORF with annotated starts. This action will be indicated by adding "Zoomed" to the title. For starts, yellow indicates the location of called starts comprised solely of Glimmer/GeneMark auto-annotations, green indicates the location of called starts with at least 1 manual gene annotation.

Pham 223199 Report

This analysis was run 03/28/25 on database version 593.

Pham number 223199 has 51 members, 22 are drafts.

Phages represented in each track:

- Track 1 : Isolde_13, AdaS_12, MUWow_11, RadFad_12, Hillester_12, BillyTP_12, BenchScraper_12, Raphaella_12, Phrank15_11, Richie_12, CookieBear_13, Aikyam_12, JellyBread_12, MidnightRain_12, Auxilium_12, BlueShadow_13, YoungHarleezy_12, Vopal_13, MaterMagnus_12
- Track 2 : ThayneTheZag_12
- Track 3 : Globfish_12
- Track 4 : Anekin_11
- Track 5 : Bhageatrice_14
- Track 6 : Hestia_12
- Track 7 : Shukran_12
- Track 8 : EvePickles_12
- Track 9 : SpicyFrank_12
- Track 10 : Seahorse_13
- Track 11 : Faja_12
- Track 12 : Lawnathon_12
- Track 13 : Sashimi_13
- Track 14 : Sakai_12, Windest_13, Gorpy_12
- Track 15 : Tiff81_13
- Track 16 : Persistence_11
- Track 17 : PeggyLeg03_11, Constance_11, FosterFrank_11, Judy_11
- Track 18 : KayMoney_11, GlobiWarming_11, ChuckDuck_11
- Track 19 : Peas_11, Eileen_11
- Track 20 : Karkharias_11, HotPotato_11, Bridgette_11
- Track 21 : Pucara_11
- Track 22 : Pitbull_10, Hum25_10

Summary of Final Annotations (See graph section above for start numbers):

The start number called the most often in the published annotations is 4, it was called in 29 of the 29 non-draft genes in the pham.

Genes that call this "Most Annotated" start:

- AdaS_12, Aikyam_12, Anekin_11, Auxilium_12, BenchScraper_12, Bhageatrice_14, BillyTP_12, BlueShadow_13, Bridgette_11, ChuckDuck_11, Constance_11,

CookieBear_13, Eileen_11, EvePickles_12, Faja_12, FosterFrank_11, Globfish_12, GlobiWarming_11, Gorpy_12, Hestia_12, Hillester_12, HotPotato_11, Hum25_10, Isolde_13, JellyBread_12, Judy_11, Karkharias_11, KayMoney_11, Lawnathon_12, MUWow_11, MaterMagnus_12, MidnightRain_12, Peas_11, PeggyLeg03_11, Persistence_11, Phrank15_11, Pitbull_10, Pucara_11, RadFad_12, Raphaella_12, Richie_12, Sakai_12, Sashimi_13, Seahorse_13, Shukran_12, SpicyFrank_12, ThayneTheZag_12, Tiff81_13, Vopal_13, Windest_13, YoungHarleezy_12,

Genes that have the "Most Annotated" start but do not call it:

-

Genes that do not have the "Most Annotated" start:

-

Summary by start number:

Start 4:

- Found in 51 of 51 (100.0%) of genes in pham
- Manual Annotations of this start: 29 of 29
- Called 100.0% of time when present
- Phage (with cluster) where this start called: AdaS_12 (AY), Aikyam_12 (AY), Anekin_11 (AY), Auxilium_12 (AY), BenchScraper_12 (AY), Bhageatrice_14 (AY), BillyTP_12 (AY), BlueShadow_13 (AY), Bridgette_11 (FA), ChuckDuck_11 (FA), Constance_11 (FA), CookieBear_13 (AY), Eileen_11 (FA), EvePickles_12 (AY), Faja_12 (AY), FosterFrank_11 (FA), Globfish_12 (AY), GlobiWarming_11 (FA), Gorpy_12 (AY), Hestia_12 (AY), Hillester_12 (AY), HotPotato_11 (FA), Hum25_10 (FQ), Isolde_13 (AY), JellyBread_12 (AY), Judy_11 (FA), Karkharias_11 (FA), KayMoney_11 (FA), Lawnathon_12 (AY), MUWow_11 (AY), MaterMagnus_12 (AY), MidnightRain_12 (AY), Peas_11 (FA), PeggyLeg03_11 (FA), Persistence_11 (AY), Phrank15_11 (AY), Pitbull_10 (FQ), Pucara_11 (FA), RadFad_12 (AY), Raphaella_12 (AY), Richie_12 (AY), Sakai_12 (AY), Sashimi_13 (AY), Seahorse_13 (AY), Shukran_12 (AY), SpicyFrank_12 (AY), ThayneTheZag_12 (AY), Tiff81_13 (AY), Vopal_13 (AY), Windest_13 (AY), YoungHarleezy_12 (AY),

Summary by clusters:

There are 3 clusters represented in this pham: AY, FA, FQ,

Info for manual annotations of cluster AY:

- Start number 4 was manually annotated 18 times for cluster AY.

Info for manual annotations of cluster FA:

- Start number 4 was manually annotated 9 times for cluster FA.

Info for manual annotations of cluster FQ:

- Start number 4 was manually annotated 2 times for cluster FQ.

Gene Information:

Gene: AdaS_12 Start: 8043, Stop: 8426, Start Num: 4

Candidate Starts for AdaS_12:

(Start: 4 @8043 has 29 MA's), (9, 8118), (13, 8163), (14, 8166), (15, 8202),

Gene: Aikyam_12 Start: 8044, Stop: 8427, Start Num: 4

Candidate Starts for Aikyam_12:

(Start: 4 @8044 has 29 MA's), (9, 8119), (13, 8164), (14, 8167), (15, 8203),

Gene: Anekin_11 Start: 8156, Stop: 8539, Start Num: 4

Candidate Starts for Anekin_11:

(Start: 4 @8156 has 29 MA's), (8, 8222), (13, 8276), (15, 8315),

Gene: Auxilium_12 Start: 8043, Stop: 8426, Start Num: 4

Candidate Starts for Auxilium_12:

(Start: 4 @8043 has 29 MA's), (9, 8118), (13, 8163), (14, 8166), (15, 8202),

Gene: BenchScraper_12 Start: 8058, Stop: 8441, Start Num: 4

Candidate Starts for BenchScraper_12:

(Start: 4 @8058 has 29 MA's), (9, 8133), (13, 8178), (14, 8181), (15, 8217),

Gene: Bhageatrice_14 Start: 9253, Stop: 9636, Start Num: 4

Candidate Starts for Bhageatrice_14:

(Start: 4 @9253 has 29 MA's), (5, 9283), (8, 9319), (13, 9373), (14, 9376), (15, 9412), (25, 9565),

Gene: BillyTP_12 Start: 8049, Stop: 8432, Start Num: 4

Candidate Starts for BillyTP_12:

(Start: 4 @8049 has 29 MA's), (9, 8124), (13, 8169), (14, 8172), (15, 8208),

Gene: BlueShadow_13 Start: 8043, Stop: 8426, Start Num: 4

Candidate Starts for BlueShadow_13:

(Start: 4 @8043 has 29 MA's), (9, 8118), (13, 8163), (14, 8166), (15, 8202),

Gene: Bridgette_11 Start: 8195, Stop: 8578, Start Num: 4

Candidate Starts for Bridgette_11:

(Start: 4 @8195 has 29 MA's), (9, 8270), (13, 8315), (15, 8354), (20, 8408), (25, 8507),

Gene: ChuckDuck_11 Start: 8151, Stop: 8534, Start Num: 4

Candidate Starts for ChuckDuck_11:

(Start: 4 @8151 has 29 MA's), (9, 8226), (13, 8271), (15, 8310), (25, 8463),

Gene: Constance_11 Start: 8197, Stop: 8580, Start Num: 4

Candidate Starts for Constance_11:

(Start: 4 @8197 has 29 MA's), (9, 8272), (13, 8317), (25, 8509),

Gene: CookieBear_13 Start: 8043, Stop: 8426, Start Num: 4

Candidate Starts for CookieBear_13:

(Start: 4 @8043 has 29 MA's), (9, 8118), (13, 8163), (14, 8166), (15, 8202),

Gene: Eileen_11 Start: 8160, Stop: 8543, Start Num: 4

Candidate Starts for Eileen_11:

(Start: 4 @8160 has 29 MA's), (9, 8235), (13, 8280), (15, 8319), (25, 8472),

Gene: EvePickles_12 Start: 8096, Stop: 8488, Start Num: 4

Candidate Starts for EvePickles_12:

(1, 7766), (2, 7853), (3, 7931), (Start: 4 @8096 has 29 MA's), (8, 8162), (17, 8288), (22, 8327), (24, 8399), (29, 8462),

Gene: Faja_12 Start: 8040, Stop: 8432, Start Num: 4

Candidate Starts for Faja_12:

(1, 7710), (2, 7797), (3, 7875), (Start: 4 @8040 has 29 MA's), (6, 8082), (8, 8106), (17, 8232), (22, 8271), (29, 8406),

Gene: FosterFrank_11 Start: 8155, Stop: 8538, Start Num: 4

Candidate Starts for FosterFrank_11:

(Start: 4 @8155 has 29 MA's), (9, 8230), (13, 8275), (25, 8467),

Gene: Globfish_12 Start: 8091, Stop: 8489, Start Num: 4

Candidate Starts for Globfish_12:

(2, 7848), (Start: 4 @8091 has 29 MA's), (8, 8157), (9, 8166), (10, 8172), (12, 8199), (13, 8211), (21, 8322), (27, 8439),

Gene: GlobiWarming_11 Start: 8152, Stop: 8535, Start Num: 4

Candidate Starts for GlobiWarming_11:

(Start: 4 @8152 has 29 MA's), (9, 8227), (13, 8272), (15, 8311), (25, 8464),

Gene: Gorpy_12 Start: 8052, Stop: 8435, Start Num: 4

Candidate Starts for Gorpy_12:

(Start: 4 @8052 has 29 MA's), (8, 8118), (9, 8127), (13, 8172), (14, 8175), (15, 8211),

Gene: Hestia_12 Start: 8156, Stop: 8539, Start Num: 4

Candidate Starts for Hestia_12:

(2, 7913), (Start: 4 @8156 has 29 MA's), (5, 8186), (8, 8222), (13, 8276), (14, 8279), (15, 8315), (25, 8468),

Gene: Hillester_12 Start: 8043, Stop: 8426, Start Num: 4

Candidate Starts for Hillester_12:

(Start: 4 @8043 has 29 MA's), (9, 8118), (13, 8163), (14, 8166), (15, 8202),

Gene: HotPotato_11 Start: 8160, Stop: 8543, Start Num: 4

Candidate Starts for HotPotato_11:

(Start: 4 @8160 has 29 MA's), (9, 8235), (13, 8280), (15, 8319), (20, 8373), (25, 8472),

Gene: Hum25_10 Start: 6886, Stop: 7275, Start Num: 4

Candidate Starts for Hum25_10:

(Start: 4 @6886 has 29 MA's), (7, 6949), (11, 6970), (13, 7006), (19, 7099), (26, 7213),

Gene: Isolde_13 Start: 8114, Stop: 8497, Start Num: 4

Candidate Starts for Isolde_13:

(Start: 4 @8114 has 29 MA's), (9, 8189), (13, 8234), (14, 8237), (15, 8273),

Gene: JellyBread_12 Start: 8036, Stop: 8419, Start Num: 4

Candidate Starts for JellyBread_12:

(Start: 4 @8036 has 29 MA's), (9, 8111), (13, 8156), (14, 8159), (15, 8195),

Gene: Judy_11 Start: 8196, Stop: 8579, Start Num: 4

Candidate Starts for Judy_11:

(Start: 4 @8196 has 29 MA's), (9, 8271), (13, 8316), (25, 8508),

Gene: Karkharias_11 Start: 8156, Stop: 8539, Start Num: 4
Candidate Starts for Karkharias_11:
(Start: 4 @8156 has 29 MA's), (9, 8231), (13, 8276), (15, 8315), (20, 8369), (25, 8468),

Gene: KayMoney_11 Start: 8153, Stop: 8536, Start Num: 4
Candidate Starts for KayMoney_11:
(Start: 4 @8153 has 29 MA's), (9, 8228), (13, 8273), (15, 8312), (25, 8465),

Gene: Lawnathon_12 Start: 8194, Stop: 8577, Start Num: 4
Candidate Starts for Lawnathon_12:
(2, 7951), (Start: 4 @8194 has 29 MA's), (13, 8314), (14, 8317), (15, 8353),

Gene: MUWow_11 Start: 8136, Stop: 8519, Start Num: 4
Candidate Starts for MUWow_11:
(Start: 4 @8136 has 29 MA's), (9, 8211), (13, 8256), (14, 8259), (15, 8295),

Gene: MaterMagnus_12 Start: 8044, Stop: 8427, Start Num: 4
Candidate Starts for MaterMagnus_12:
(Start: 4 @8044 has 29 MA's), (9, 8119), (13, 8164), (14, 8167), (15, 8203),

Gene: MidnightRain_12 Start: 8043, Stop: 8426, Start Num: 4
Candidate Starts for MidnightRain_12:
(Start: 4 @8043 has 29 MA's), (9, 8118), (13, 8163), (14, 8166), (15, 8202),

Gene: Peas_11 Start: 8160, Stop: 8543, Start Num: 4
Candidate Starts for Peas_11:
(Start: 4 @8160 has 29 MA's), (9, 8235), (13, 8280), (15, 8319), (25, 8472),

Gene: PeggyLeg03_11 Start: 8197, Stop: 8580, Start Num: 4
Candidate Starts for PeggyLeg03_11:
(Start: 4 @8197 has 29 MA's), (9, 8272), (13, 8317), (25, 8509),

Gene: Persistence_11 Start: 8114, Stop: 8497, Start Num: 4
Candidate Starts for Persistence_11:
(Start: 4 @8114 has 29 MA's), (8, 8180), (13, 8234), (15, 8273), (25, 8426), (28, 8459),

Gene: Phrank15_11 Start: 8196, Stop: 8579, Start Num: 4
Candidate Starts for Phrank15_11:
(Start: 4 @8196 has 29 MA's), (9, 8271), (13, 8316), (14, 8319), (15, 8355),

Gene: Pitbull_10 Start: 6516, Stop: 6905, Start Num: 4
Candidate Starts for Pitbull_10:
(Start: 4 @6516 has 29 MA's), (7, 6579), (11, 6600), (13, 6636), (19, 6729), (26, 6843),

Gene: Pucara_11 Start: 8159, Stop: 8542, Start Num: 4
Candidate Starts for Pucara_11:
(Start: 4 @8159 has 29 MA's), (9, 8234), (13, 8279), (15, 8318), (25, 8471),

Gene: RadFad_12 Start: 8043, Stop: 8426, Start Num: 4
Candidate Starts for RadFad_12:
(Start: 4 @8043 has 29 MA's), (9, 8118), (13, 8163), (14, 8166), (15, 8202),

Gene: Raphaella_12 Start: 8043, Stop: 8426, Start Num: 4
Candidate Starts for Raphaella_12:
(Start: 4 @8043 has 29 MA's), (9, 8118), (13, 8163), (14, 8166), (15, 8202),

Gene: Richie_12 Start: 8058, Stop: 8441, Start Num: 4
Candidate Starts for Richie_12:
(Start: 4 @8058 has 29 MA's), (9, 8133), (13, 8178), (14, 8181), (15, 8217),

Gene: Sakai_12 Start: 8052, Stop: 8435, Start Num: 4
Candidate Starts for Sakai_12:
(Start: 4 @8052 has 29 MA's), (8, 8118), (9, 8127), (13, 8172), (14, 8175), (15, 8211),

Gene: Sashimi_13 Start: 8155, Stop: 8547, Start Num: 4
Candidate Starts for Sashimi_13:
(Start: 4 @8155 has 29 MA's), (6, 8197), (8, 8221), (16, 8320), (17, 8347),

Gene: Seahorse_13 Start: 8295, Stop: 8678, Start Num: 4
Candidate Starts for Seahorse_13:
(Start: 4 @8295 has 29 MA's), (8, 8361), (13, 8415), (14, 8418), (15, 8454), (25, 8607),

Gene: Shukran_12 Start: 7998, Stop: 8381, Start Num: 4
Candidate Starts for Shukran_12:
(Start: 4 @7998 has 29 MA's), (8, 8064), (13, 8118), (15, 8157), (21, 8214), (23, 8247),

Gene: SpicyFrank_12 Start: 8106, Stop: 8504, Start Num: 4
Candidate Starts for SpicyFrank_12:
(Start: 4 @8106 has 29 MA's), (8, 8172), (9, 8181), (10, 8187), (12, 8214), (13, 8226), (21, 8337), (27, 8454),

Gene: ThayneTheZag_12 Start: 8083, Stop: 8481, Start Num: 4
Candidate Starts for ThayneTheZag_12:
(Start: 4 @8083 has 29 MA's), (8, 8149), (9, 8158), (12, 8191), (13, 8203), (21, 8314), (27, 8431),

Gene: Tiff81_13 Start: 8253, Stop: 8651, Start Num: 4
Candidate Starts for Tiff81_13:
(Start: 4 @8253 has 29 MA's), (5, 8283), (8, 8319), (13, 8373), (18, 8463),

Gene: Vopal_13 Start: 8115, Stop: 8498, Start Num: 4
Candidate Starts for Vopal_13:
(Start: 4 @8115 has 29 MA's), (9, 8190), (13, 8235), (14, 8238), (15, 8274),

Gene: Windest_13 Start: 8100, Stop: 8483, Start Num: 4
Candidate Starts for Windest_13:
(Start: 4 @8100 has 29 MA's), (8, 8166), (9, 8175), (13, 8220), (14, 8223), (15, 8259),

Gene: YoungHarleezy_12 Start: 8056, Stop: 8439, Start Num: 4
Candidate Starts for YoungHarleezy_12:
(Start: 4 @8056 has 29 MA's), (9, 8131), (13, 8176), (14, 8179), (15, 8215),