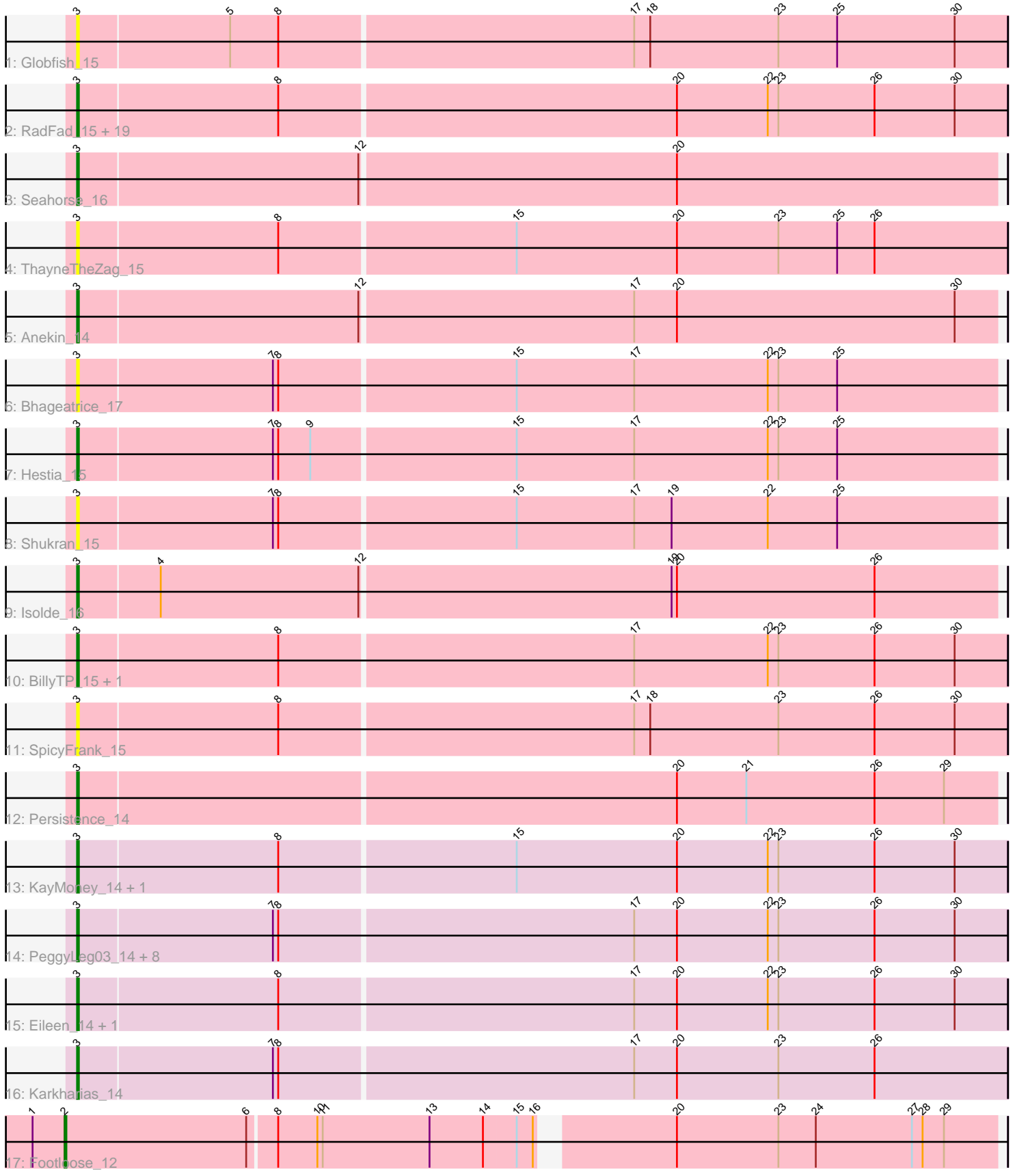


Pham 223221



Note: Tracks are now grouped by subcluster and scaled. Switching in subcluster is indicated by changes in track color. Track scale is now set by default to display the region 30 bp upstream of start 1 to 30 bp downstream of the last possible start. If this default region is judged to be packed too tightly with annotated starts, the track will be further scaled to only show that region of the ORF with annotated starts. This action will be indicated by adding "Zoomed" to the title. For starts, yellow indicates the location of called starts comprised solely of Glimmer/GeneMark auto-annotations, green indicates the location of called starts with at least 1 manual gene annotation.

Pham 223221 Report

This analysis was run 03/28/25 on database version 593.

Pham number 223221 has 47 members, 21 are drafts.

Phages represented in each track:

- Track 1 : Globfish_15
- Track 2 : RadFad_15, BlueShadow_16, AdaS_15, Windest_16, MaterMagnus_15, Hillester_15, MUWow_14, Vopal_16, Raphaella_15, BenchScraper_15, Gorpy_15, Phrank15_14, Sakai_15, Aikyam_15, CookieBear_16, Richie_15, JellyBread_15, Auxilium_15, MidnightRain_15, YoungHarleezy_15
- Track 3 : Seahorse_16
- Track 4 : ThayneTheZag_15
- Track 5 : Anekin_14
- Track 6 : Bhageatrice_17
- Track 7 : Hestia_15
- Track 8 : Shukran_15
- Track 9 : Isolde_16
- Track 10 : BillyTP_15, Lawnathon_15
- Track 11 : SpicyFrank_15
- Track 12 : Persistence_14
- Track 13 : KayMoney_14, ChuckDuck_14
- Track 14 : PeggyLeg03_14, GlobiWarming_14, Constance_14, HotPotato_14, FosterFrank_14, Judy_14, Bridgette_14, Tiff81_16, Pucara_14
- Track 15 : Eileen_14, Peas_14
- Track 16 : Karkharias_14
- Track 17 : Footloose_12

Summary of Final Annotations (See graph section above for start numbers):

The start number called the most often in the published annotations is 3, it was called in 25 of the 26 non-draft genes in the pham.

Genes that call this "Most Annotated" start:

- AdaS_15, Aikyam_15, Anekin_14, Auxilium_15, BenchScraper_15, Bhageatrice_17, BillyTP_15, BlueShadow_16, Bridgette_14, ChuckDuck_14, Constance_14, CookieBear_16, Eileen_14, FosterFrank_14, Globfish_15, GlobiWarming_14, Gorpy_15, Hestia_15, Hillester_15, HotPotato_14, Isolde_16, JellyBread_15, Judy_14, Karkharias_14, KayMoney_14, Lawnathon_15, MUWow_14, MaterMagnus_15, MidnightRain_15, Peas_14, PeggyLeg03_14, Persistence_14,

Phrank15_14, Pucara_14, RadFad_15, Raphaella_15, Richie_15, Sakai_15, Seahorse_16, Shukran_15, SpicyFrank_15, ThayneTheZag_15, Tiff81_16, Vopal_16, Windest_16, YoungHarleezy_15,

Genes that have the "Most Annotated" start but do not call it:

-

Genes that do not have the "Most Annotated" start:

- Footloose_12,

Summary by start number:

Start 2:

- Found in 1 of 47 (2.1%) of genes in pham
- Manual Annotations of this start: 1 of 26
- Called 100.0% of time when present
- Phage (with cluster) where this start called: Footloose_12 (singleton),

Start 3:

- Found in 46 of 47 (97.9%) of genes in pham
- Manual Annotations of this start: 25 of 26
- Called 100.0% of time when present
- Phage (with cluster) where this start called: AdaS_15 (AY), Aikyam_15 (AY), Anekin_14 (AY), Auxilium_15 (AY), BenchScraper_15 (AY), Bhageatrice_17 (AY), BillyTP_15 (AY), BlueShadow_16 (AY), Bridgette_14 (FA), ChuckDuck_14 (FA), Constance_14 (FA), CookieBear_16 (AY), Eileen_14 (FA), FosterFrank_14 (FA), Globfish_15 (AY), GlobiWarming_14 (FA), Gorpy_15 (AY), Hestia_15 (AY), Hillester_15 (AY), HotPotato_14 (FA), Isolde_16 (AY), JellyBread_15 (AY), Judy_14 (FA), Karkharias_14 (FA), KayMoney_14 (FA), Lawnathon_15 (AY), MUWow_14 (AY), MaterMagnus_15 (AY), MidnightRain_15 (AY), Peas_14 (FA), PeggyLeg03_14 (FA), Persistence_14 (AY), Phrank15_14 (AY), Pucara_14 (FA), RadFad_15 (AY), Raphaella_15 (AY), Richie_15 (AY), Sakai_15 (AY), Seahorse_16 (AY), Shukran_15 (AY), SpicyFrank_15 (AY), ThayneTheZag_15 (AY), Tiff81_16 (AY), Vopal_16 (AY), Windest_16 (AY), YoungHarleezy_15 (AY),

Summary by clusters:

There are 3 clusters represented in this pham: AY, FA, singleton,

Info for manual annotations of cluster AY:

- Start number 3 was manually annotated 16 times for cluster AY.

Info for manual annotations of cluster FA:

- Start number 3 was manually annotated 9 times for cluster FA.

Gene Information:

Gene: AdaS_15 Start: 9046, Stop: 9561, Start Num: 3

Candidate Starts for AdaS_15:

(Start: 3 @9046 has 25 MA's), (8, 9157), (20, 9376), (22, 9427), (23, 9433), (26, 9487), (30, 9532),

Gene: Aikyam_15 Start: 9047, Stop: 9562, Start Num: 3
Candidate Starts for Aikyam_15:
(Start: 3 @9047 has 25 MA's), (8, 9158), (20, 9377), (22, 9428), (23, 9434), (26, 9488), (30, 9533),

Gene: Anekin_14 Start: 9162, Stop: 9671, Start Num: 3
Candidate Starts for Anekin_14:
(Start: 3 @9162 has 25 MA's), (12, 9318), (17, 9468), (20, 9492), (30, 9648),

Gene: Auxilium_15 Start: 9046, Stop: 9561, Start Num: 3
Candidate Starts for Auxilium_15:
(Start: 3 @9046 has 25 MA's), (8, 9157), (20, 9376), (22, 9427), (23, 9433), (26, 9487), (30, 9532),

Gene: BenchScraper_15 Start: 9061, Stop: 9576, Start Num: 3
Candidate Starts for BenchScraper_15:
(Start: 3 @9061 has 25 MA's), (8, 9172), (20, 9391), (22, 9442), (23, 9448), (26, 9502), (30, 9547),

Gene: Bhageatrice_17 Start: 10257, Stop: 10766, Start Num: 3
Candidate Starts for Bhageatrice_17:
(Start: 3 @10257 has 25 MA's), (7, 10365), (8, 10368), (15, 10497), (17, 10563), (22, 10638), (23, 10644), (25, 10677),

Gene: BillyTP_15 Start: 9052, Stop: 9567, Start Num: 3
Candidate Starts for BillyTP_15:
(Start: 3 @9052 has 25 MA's), (8, 9163), (17, 9358), (22, 9433), (23, 9439), (26, 9493), (30, 9538),

Gene: BlueShadow_16 Start: 9046, Stop: 9561, Start Num: 3
Candidate Starts for BlueShadow_16:
(Start: 3 @9046 has 25 MA's), (8, 9157), (20, 9376), (22, 9427), (23, 9433), (26, 9487), (30, 9532),

Gene: Bridgette_14 Start: 9212, Stop: 9727, Start Num: 3
Candidate Starts for Bridgette_14:
(Start: 3 @9212 has 25 MA's), (7, 9320), (8, 9323), (17, 9518), (20, 9542), (22, 9593), (23, 9599), (26, 9653), (30, 9698),

Gene: ChuckDuck_14 Start: 9168, Stop: 9683, Start Num: 3
Candidate Starts for ChuckDuck_14:
(Start: 3 @9168 has 25 MA's), (8, 9279), (15, 9408), (20, 9498), (22, 9549), (23, 9555), (26, 9609), (30, 9654),

Gene: Constance_14 Start: 9215, Stop: 9730, Start Num: 3
Candidate Starts for Constance_14:
(Start: 3 @9215 has 25 MA's), (7, 9323), (8, 9326), (17, 9521), (20, 9545), (22, 9596), (23, 9602), (26, 9656), (30, 9701),

Gene: CookieBear_16 Start: 9046, Stop: 9561, Start Num: 3
Candidate Starts for CookieBear_16:
(Start: 3 @9046 has 25 MA's), (8, 9157), (20, 9376), (22, 9427), (23, 9433), (26, 9487), (30, 9532),

Gene: Eileen_14 Start: 9176, Stop: 9691, Start Num: 3
Candidate Starts for Eileen_14:
(Start: 3 @9176 has 25 MA's), (8, 9287), (17, 9482), (20, 9506), (22, 9557), (23, 9563), (26, 9617), (30, 9662),

Gene: Footloose_12 Start: 7732, Stop: 8235, Start Num: 2

Candidate Starts for Footloose_12:

(1, 7714), (Start: 2 @7732 has 1 MA's), (6, 7834), (8, 7849), (10, 7870), (11, 7873), (13, 7933), (14, 7963), (15, 7981), (16, 7990), (20, 8056), (23, 8113), (24, 8134), (27, 8188), (28, 8194), (29, 8206),

Gene: FosterFrank_14 Start: 9173, Stop: 9688, Start Num: 3

Candidate Starts for FosterFrank_14:

(Start: 3 @9173 has 25 MA's), (7, 9281), (8, 9284), (17, 9479), (20, 9503), (22, 9554), (23, 9560), (26, 9614), (30, 9659),

Gene: Globfish_15 Start: 9110, Stop: 9625, Start Num: 3

Candidate Starts for Globfish_15:

(Start: 3 @9110 has 25 MA's), (5, 9194), (8, 9221), (17, 9416), (18, 9425), (23, 9497), (25, 9530), (30, 9596),

Gene: GlobiWarming_14 Start: 9169, Stop: 9684, Start Num: 3

Candidate Starts for GlobiWarming_14:

(Start: 3 @9169 has 25 MA's), (7, 9277), (8, 9280), (17, 9475), (20, 9499), (22, 9550), (23, 9556), (26, 9610), (30, 9655),

Gene: Gorpy_15 Start: 9055, Stop: 9570, Start Num: 3

Candidate Starts for Gorpy_15:

(Start: 3 @9055 has 25 MA's), (8, 9166), (20, 9385), (22, 9436), (23, 9442), (26, 9496), (30, 9541),

Gene: Hestia_15 Start: 9159, Stop: 9668, Start Num: 3

Candidate Starts for Hestia_15:

(Start: 3 @9159 has 25 MA's), (7, 9267), (8, 9270), (9, 9288), (15, 9399), (17, 9465), (22, 9540), (23, 9546), (25, 9579),

Gene: Hillester_15 Start: 9046, Stop: 9561, Start Num: 3

Candidate Starts for Hillester_15:

(Start: 3 @9046 has 25 MA's), (8, 9157), (20, 9376), (22, 9427), (23, 9433), (26, 9487), (30, 9532),

Gene: HotPotato_14 Start: 9177, Stop: 9692, Start Num: 3

Candidate Starts for HotPotato_14:

(Start: 3 @9177 has 25 MA's), (7, 9285), (8, 9288), (17, 9483), (20, 9507), (22, 9558), (23, 9564), (26, 9618), (30, 9663),

Gene: Isolde_16 Start: 9117, Stop: 9626, Start Num: 3

Candidate Starts for Isolde_16:

(Start: 3 @9117 has 25 MA's), (4, 9162), (12, 9273), (19, 9444), (20, 9447), (26, 9558),

Gene: JellyBread_15 Start: 9039, Stop: 9554, Start Num: 3

Candidate Starts for JellyBread_15:

(Start: 3 @9039 has 25 MA's), (8, 9150), (20, 9369), (22, 9420), (23, 9426), (26, 9480), (30, 9525),

Gene: Judy_14 Start: 9214, Stop: 9729, Start Num: 3

Candidate Starts for Judy_14:

(Start: 3 @9214 has 25 MA's), (7, 9322), (8, 9325), (17, 9520), (20, 9544), (22, 9595), (23, 9601), (26, 9655), (30, 9700),

Gene: Karkharias_14 Start: 9173, Stop: 9688, Start Num: 3

Candidate Starts for Karkharias_14:

(Start: 3 @9173 has 25 MA's), (7, 9281), (8, 9284), (17, 9479), (20, 9503), (23, 9560), (26, 9614),

Gene: KayMoney_14 Start: 9170, Stop: 9685, Start Num: 3

Candidate Starts for KayMoney_14:

(Start: 3 @9170 has 25 MA's), (8, 9281), (15, 9410), (20, 9500), (22, 9551), (23, 9557), (26, 9611), (30, 9656),

Gene: Lawnathon_15 Start: 9197, Stop: 9712, Start Num: 3

Candidate Starts for Lawnathon_15:

(Start: 3 @9197 has 25 MA's), (8, 9308), (17, 9503), (22, 9578), (23, 9584), (26, 9638), (30, 9683),

Gene: MUWow_14 Start: 9139, Stop: 9654, Start Num: 3

Candidate Starts for MUWow_14:

(Start: 3 @9139 has 25 MA's), (8, 9250), (20, 9469), (22, 9520), (23, 9526), (26, 9580), (30, 9625),

Gene: MaterMagnus_15 Start: 9047, Stop: 9562, Start Num: 3

Candidate Starts for MaterMagnus_15:

(Start: 3 @9047 has 25 MA's), (8, 9158), (20, 9377), (22, 9428), (23, 9434), (26, 9488), (30, 9533),

Gene: MidnightRain_15 Start: 9046, Stop: 9561, Start Num: 3

Candidate Starts for MidnightRain_15:

(Start: 3 @9046 has 25 MA's), (8, 9157), (20, 9376), (22, 9427), (23, 9433), (26, 9487), (30, 9532),

Gene: Peas_14 Start: 9176, Stop: 9691, Start Num: 3

Candidate Starts for Peas_14:

(Start: 3 @9176 has 25 MA's), (8, 9287), (17, 9482), (20, 9506), (22, 9557), (23, 9563), (26, 9617), (30, 9662),

Gene: PeggyLeg03_14 Start: 9215, Stop: 9730, Start Num: 3

Candidate Starts for PeggyLeg03_14:

(Start: 3 @9215 has 25 MA's), (7, 9323), (8, 9326), (17, 9521), (20, 9545), (22, 9596), (23, 9602), (26, 9656), (30, 9701),

Gene: Persistence_14 Start: 9116, Stop: 9625, Start Num: 3

Candidate Starts for Persistence_14:

(Start: 3 @9116 has 25 MA's), (20, 9446), (21, 9485), (26, 9557), (29, 9596),

Gene: Phrank15_14 Start: 9199, Stop: 9714, Start Num: 3

Candidate Starts for Phrank15_14:

(Start: 3 @9199 has 25 MA's), (8, 9310), (20, 9529), (22, 9580), (23, 9586), (26, 9640), (30, 9685),

Gene: Pucara_14 Start: 9176, Stop: 9691, Start Num: 3

Candidate Starts for Pucara_14:

(Start: 3 @9176 has 25 MA's), (7, 9284), (8, 9287), (17, 9482), (20, 9506), (22, 9557), (23, 9563), (26, 9617), (30, 9662),

Gene: RadFad_15 Start: 9046, Stop: 9561, Start Num: 3

Candidate Starts for RadFad_15:

(Start: 3 @9046 has 25 MA's), (8, 9157), (20, 9376), (22, 9427), (23, 9433), (26, 9487), (30, 9532),

Gene: Raphaella_15 Start: 9046, Stop: 9561, Start Num: 3

Candidate Starts for Raphaella_15:

(Start: 3 @9046 has 25 MA's), (8, 9157), (20, 9376), (22, 9427), (23, 9433), (26, 9487), (30, 9532),

Gene: Richie_15 Start: 9061, Stop: 9576, Start Num: 3

Candidate Starts for Richie_15:

(Start: 3 @9061 has 25 MA's), (8, 9172), (20, 9391), (22, 9442), (23, 9448), (26, 9502), (30, 9547),

Gene: Sakai_15 Start: 9055, Stop: 9570, Start Num: 3

Candidate Starts for Sakai_15:

(Start: 3 @9055 has 25 MA's), (8, 9166), (20, 9385), (22, 9436), (23, 9442), (26, 9496), (30, 9541),

Gene: Seahorse_16 Start: 9301, Stop: 9810, Start Num: 3

Candidate Starts for Seahorse_16:

(Start: 3 @9301 has 25 MA's), (12, 9457), (20, 9631),

Gene: Shukran_15 Start: 9002, Stop: 9511, Start Num: 3

Candidate Starts for Shukran_15:

(Start: 3 @9002 has 25 MA's), (7, 9110), (8, 9113), (15, 9242), (17, 9308), (19, 9329), (22, 9383), (25, 9422),

Gene: SpicyFrank_15 Start: 9125, Stop: 9640, Start Num: 3

Candidate Starts for SpicyFrank_15:

(Start: 3 @9125 has 25 MA's), (8, 9236), (17, 9431), (18, 9440), (23, 9512), (26, 9566), (30, 9611),

Gene: ThayneTheZag_15 Start: 9103, Stop: 9618, Start Num: 3

Candidate Starts for ThayneTheZag_15:

(Start: 3 @9103 has 25 MA's), (8, 9214), (15, 9343), (20, 9433), (23, 9490), (25, 9523), (26, 9544),

Gene: Tiff81_16 Start: 9271, Stop: 9786, Start Num: 3

Candidate Starts for Tiff81_16:

(Start: 3 @9271 has 25 MA's), (7, 9379), (8, 9382), (17, 9577), (20, 9601), (22, 9652), (23, 9658), (26, 9712), (30, 9757),

Gene: Vopal_16 Start: 9118, Stop: 9633, Start Num: 3

Candidate Starts for Vopal_16:

(Start: 3 @9118 has 25 MA's), (8, 9229), (20, 9448), (22, 9499), (23, 9505), (26, 9559), (30, 9604),

Gene: Windest_16 Start: 9103, Stop: 9618, Start Num: 3

Candidate Starts for Windest_16:

(Start: 3 @9103 has 25 MA's), (8, 9214), (20, 9433), (22, 9484), (23, 9490), (26, 9544), (30, 9589),

Gene: YoungHarleezy_15 Start: 9059, Stop: 9574, Start Num: 3

Candidate Starts for YoungHarleezy_15:

(Start: 3 @9059 has 25 MA's), (8, 9170), (20, 9389), (22, 9440), (23, 9446), (26, 9500), (30, 9545),