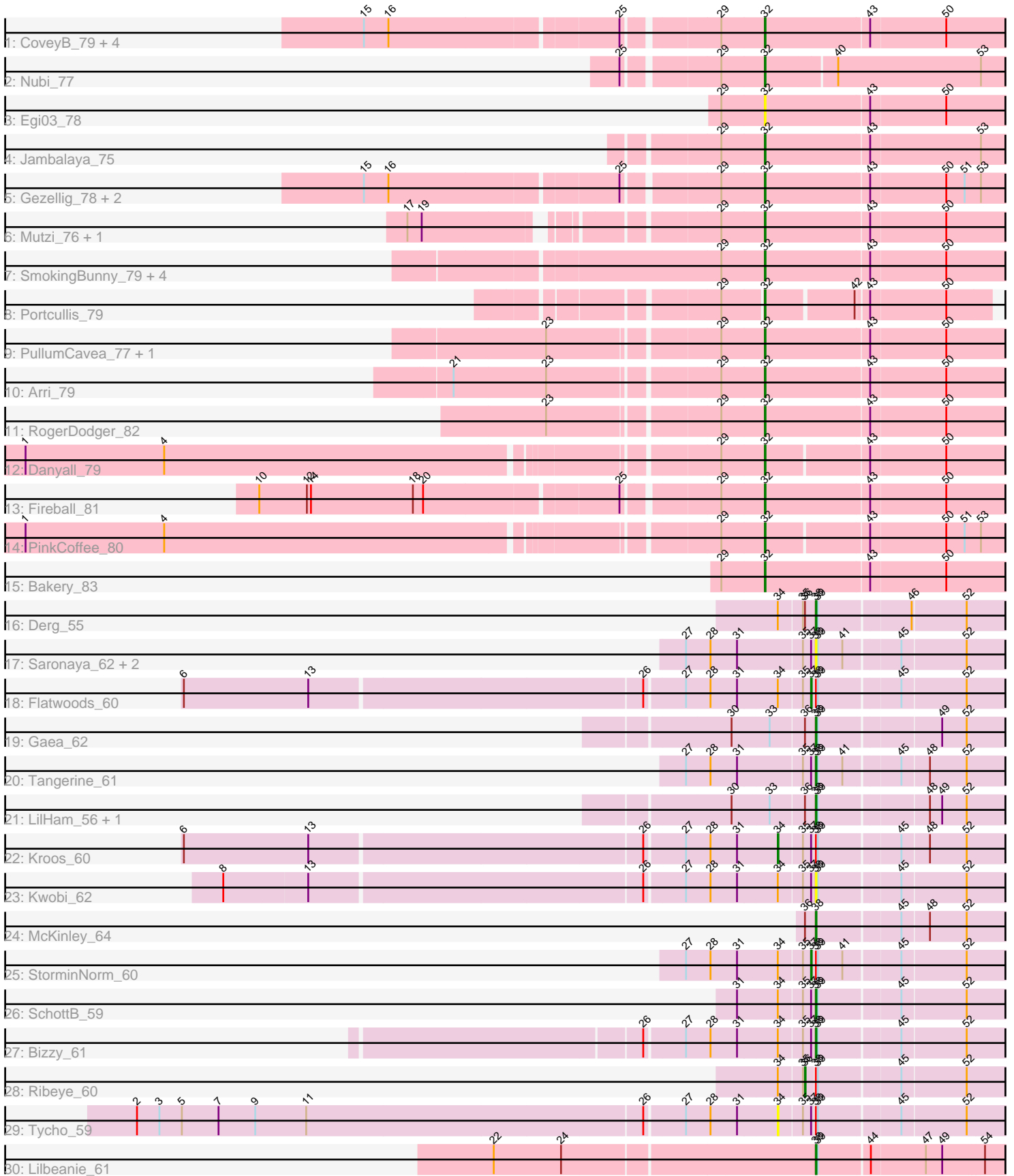


Pham 223227



Note: Tracks are now grouped by subcluster and scaled. Switching in subcluster is indicated by changes in track color. Track scale is now set by default to display the region 30 bp upstream of start 1 to 30 bp downstream of the last possible start. If this default region is judged to be packed too tightly with annotated starts, the track will be further scaled to only show that region of the ORF with annotated starts. This action will be indicated by adding "Zoomed" to the title. For starts, yellow indicates the location of called starts comprised solely of Glimmer/GeneMark auto-annotations, green indicates the location of called starts with at least 1 manual gene annotation.

Pham 223227 Report

This analysis was run 03/28/25 on database version 593.

Pham number 223227 has 45 members, 10 are drafts.

Phages represented in each track:

- Track 1 : CoveyB_79, CherryCola_79, Savbucketdawg_74, Halo3_76, Wizard_75
- Track 2 : Nubi_77
- Track 3 : Egi03_78
- Track 4 : Jambalaya_75
- Track 5 : Gezellig_78, Valary_79, KimmyK_78
- Track 6 : Mutzi_76, YungMoney_77
- Track 7 : SmokingBunny_79, Evamon_78, Salvador_78, Togo_78, Twister6_79
- Track 8 : Portcullis_79
- Track 9 : PullumCavea_77, Phlop_76
- Track 10 : Arri_79
- Track 11 : RogerDodger_82
- Track 12 : Danyall_79
- Track 13 : Fireball_81
- Track 14 : PinkCoffee_80
- Track 15 : Bakery_83
- Track 16 : Derg_55
- Track 17 : Saronaya_62, Gustavo_62, Baumdotcom_58
- Track 18 : Flatwoods_60
- Track 19 : Gaea_62
- Track 20 : Tangerine_61
- Track 21 : LilHam_56, Ashertheman_62
- Track 22 : Kroos_60
- Track 23 : Kwobi_62
- Track 24 : McKinley_64
- Track 25 : StorminNorm_60
- Track 26 : SchottB_59
- Track 27 : Bizzy_61
- Track 28 : Ribeye_60
- Track 29 : Tycho_59
- Track 30 : Lilbeanie_61

Summary of Final Annotations (See graph section above for start numbers):

The start number called the most often in the published annotations is 32, it was called in 23 of the 35 non-draft genes in the pham.

Genes that call this "Most Annotated" start:

- Arri_79, Bakery_83, CherryCola_79, CoveyB_79, Danyall_79, Egi03_78, Evamon_78, Fireball_81, Gezellig_78, Halo3_76, Jambalaya_75, KimmyK_78, Mutzi_76, Nubi_77, Phlop_76, PinkCoffee_80, Portcullis_79, PullumCavea_77, RogerDodger_82, Salvador_78, Savbucketdawg_74, SmokingBunny_79, Togo_78, Twister6_79, Valary_79, Wizard_75, YungMoney_77,

Genes that have the "Most Annotated" start but do not call it:

-

Genes that do not have the "Most Annotated" start:

- Ashertheman_62, Baumdotcom_58, Bizzy_61, Derg_55, Flatwoods_60, Gaea_62, Gustavo_62, Kroos_60, Kwobi_62, LilHam_56, Lilbeanie_61, McKinley_64, Ribeye_60, Saronaya_62, SchottB_59, StorminNorm_60, Tangerine_61, Tycho_59,

Summary by start number:

Start 32:

- Found in 27 of 45 (60.0%) of genes in pham
- Manual Annotations of this start: 23 of 35
- Called 100.0% of time when present
- Phage (with cluster) where this start called: Arri_79 (DC1), Bakery_83 (DC1), CherryCola_79 (DC1), CoveyB_79 (DC1), Danyall_79 (DC1), Egi03_78 (DC1), Evamon_78 (DC1), Fireball_81 (DC1), Gezellig_78 (DC1), Halo3_76 (DC1), Jambalaya_75 (DC1), KimmyK_78 (DC1), Mutzi_76 (DC1), Nubi_77 (DC1), Phlop_76 (DC1), PinkCoffee_80 (DC1), Portcullis_79 (DC1), PullumCavea_77 (DC1), RogerDodger_82 (DC1), Salvador_78 (DC1), Savbucketdawg_74 (DC1), SmokingBunny_79 (DC1), Togo_78 (DC1), Twister6_79 (DC1), Valary_79 (DC1), Wizard_75 (DC1), YungMoney_77 (DC1),

Start 34:

- Found in 9 of 45 (20.0%) of genes in pham
- Manual Annotations of this start: 1 of 35
- Called 22.2% of time when present
- Phage (with cluster) where this start called: Kroos_60 (DE1), Tycho_59 (DE1),

Start 36:

- Found in 6 of 45 (13.3%) of genes in pham
- Manual Annotations of this start: 1 of 35
- Called 16.7% of time when present
- Phage (with cluster) where this start called: Ribeye_60 (DE1),

Start 37:

- Found in 11 of 45 (24.4%) of genes in pham
- Manual Annotations of this start: 2 of 35
- Called 18.2% of time when present
- Phage (with cluster) where this start called: Flatwoods_60 (DE1), StorminNorm_60 (DE1),

Start 38:

- Found in 18 of 45 (40.0%) of genes in pham
- Manual Annotations of this start: 8 of 35
- Called 72.2% of time when present
- Phage (with cluster) where this start called: Ashertheman_62 (DE1), Baumdotcom_58 (DE1), Bizzy_61 (DE1), Derg_55 (DE1), Gaea_62 (DE1), Gustavo_62 (DE1), Kwobi_62 (DE1), LilHam_56 (DE1), Lilbeanie_61 (DE5), McKinley_64 (DE1), Saronaya_62 (DE1), SchottB_59 (DE1), Tangerine_61 (DE1),

Summary by clusters:

There are 3 clusters represented in this pham: DE1, DE5, DC1,

Info for manual annotations of cluster DC1:

- Start number 32 was manually annotated 23 times for cluster DC1.

Info for manual annotations of cluster DE1:

- Start number 34 was manually annotated 1 time for cluster DE1.
- Start number 36 was manually annotated 1 time for cluster DE1.
- Start number 37 was manually annotated 2 times for cluster DE1.
- Start number 38 was manually annotated 7 times for cluster DE1.

Info for manual annotations of cluster DE5:

- Start number 38 was manually annotated 1 time for cluster DE5.

Gene Information:

Gene: Arri_79 Start: 52547, Stop: 52924, Start Num: 32

Candidate Starts for Arri_79:

(21, 52118), (23, 52253), (29, 52484), (Start: 32 @52547 has 23 MA's), (43, 52697), (50, 52805),

Gene: Ashertheman_62 Start: 48524, Stop: 48796, Start Num: 38

Candidate Starts for Ashertheman_62:

(30, 48410), (33, 48464), (Start: 36 @48512 has 1 MA's), (Start: 38 @48524 has 8 MA's), (39, 48527), (48, 48674), (49, 48692), (52, 48728),

Gene: Bakery_83 Start: 54647, Stop: 55024, Start Num: 32

Candidate Starts for Bakery_83:

(29, 54584), (Start: 32 @54647 has 23 MA's), (43, 54797), (50, 54905),

Gene: Baumdotcom_58 Start: 48035, Stop: 48307, Start Num: 38

Candidate Starts for Baumdotcom_58:

(27, 47855), (28, 47891), (31, 47930), (35, 48020), (Start: 37 @48032 has 2 MA's), (Start: 38 @48035 has 8 MA's), (39, 48038), (41, 48074), (45, 48149), (52, 48239),

Gene: Bizzy_61 Start: 48138, Stop: 48410, Start Num: 38

Candidate Starts for Bizzy_61:

(26, 47904), (27, 47958), (28, 47994), (31, 48033), (Start: 34 @48090 has 1 MA's), (35, 48123), (Start: 37 @48135 has 2 MA's), (Start: 38 @48138 has 8 MA's), (39, 48141), (45, 48252), (52, 48342),

Gene: CherryCola_79 Start: 52895, Stop: 53272, Start Num: 32

Candidate Starts for CherryCola_79:

(15, 52352), (16, 52388), (25, 52709), (29, 52832), (Start: 32 @52895 has 23 MA's), (43, 53045), (50, 53153),

Gene: CoveyB_79 Start: 52387, Stop: 52764, Start Num: 32

Candidate Starts for CoveyB_79:

(15, 51844), (16, 51880), (25, 52201), (29, 52324), (Start: 32 @52387 has 23 MA's), (43, 52537), (50, 52645),

Gene: Danyall_79 Start: 52090, Stop: 52458, Start Num: 32

Candidate Starts for Danyall_79:

(1, 51058), (4, 51262), (29, 52027), (Start: 32 @52090 has 23 MA's), (43, 52231), (50, 52339),

Gene: Derg_55 Start: 46968, Stop: 47240, Start Num: 38

Candidate Starts for Derg_55:

(Start: 34 @46920 has 1 MA's), (35, 46953), (Start: 36 @46956 has 1 MA's), (Start: 38 @46968 has 8 MA's), (39, 46971), (46, 47097), (52, 47172),

Gene: Egi03_78 Start: 51947, Stop: 52324, Start Num: 32

Candidate Starts for Egi03_78:

(29, 51884), (Start: 32 @51947 has 23 MA's), (43, 52097), (50, 52205),

Gene: Evamon_78 Start: 52312, Stop: 52689, Start Num: 32

Candidate Starts for Evamon_78:

(29, 52249), (Start: 32 @52312 has 23 MA's), (43, 52462), (50, 52570),

Gene: Fireball_81 Start: 52875, Stop: 53255, Start Num: 32

Candidate Starts for Fireball_81:

(10, 52179), (12, 52248), (14, 52254), (18, 52404), (20, 52419), (25, 52689), (29, 52812), (Start: 32 @52875 has 23 MA's), (43, 53025), (50, 53133),

Gene: Flatwoods_60 Start: 47605, Stop: 47880, Start Num: 37

Candidate Starts for Flatwoods_60:

(6, 46717), (13, 46900), (26, 47374), (27, 47428), (28, 47464), (31, 47503), (Start: 34 @47560 has 1 MA's), (35, 47593), (Start: 37 @47605 has 2 MA's), (Start: 38 @47608 has 8 MA's), (39, 47611), (45, 47722), (52, 47812),

Gene: Gaea_62 Start: 48297, Stop: 48569, Start Num: 38

Candidate Starts for Gaea_62:

(30, 48183), (33, 48237), (Start: 36 @48285 has 1 MA's), (Start: 38 @48297 has 8 MA's), (39, 48300), (49, 48465), (52, 48501),

Gene: Gezellig_78 Start: 52140, Stop: 52517, Start Num: 32

Candidate Starts for Gezellig_78:

(15, 51597), (16, 51633), (25, 51954), (29, 52077), (Start: 32 @52140 has 23 MA's), (43, 52290), (50, 52398), (51, 52425), (53, 52449),

Gene: Gustavo_62 Start: 48964, Stop: 49236, Start Num: 38

Candidate Starts for Gustavo_62:

(27, 48784), (28, 48820), (31, 48859), (35, 48949), (Start: 37 @48961 has 2 MA's), (Start: 38 @48964 has 8 MA's), (39, 48967), (41, 49003), (45, 49078), (52, 49168),

Gene: Halo3_76 Start: 52725, Stop: 53102, Start Num: 32

Candidate Starts for Halo3_76:

(15, 52182), (16, 52218), (25, 52539), (29, 52662), (Start: 32 @52725 has 23 MA's), (43, 52875), (50, 52983),

Gene: Jambalaya_75 Start: 51368, Stop: 51745, Start Num: 32

Candidate Starts for Jambalaya_75:

(29, 51305), (Start: 32 @51368 has 23 MA's), (43, 51518), (53, 51677),

Gene: KimmyK_78 Start: 52587, Stop: 52964, Start Num: 32

Candidate Starts for KimmyK_78:

(15, 52044), (16, 52080), (25, 52401), (29, 52524), (Start: 32 @52587 has 23 MA's), (43, 52737), (50, 52845), (51, 52872), (53, 52896),

Gene: Kroos_60 Start: 48657, Stop: 48977, Start Num: 34

Candidate Starts for Kroos_60:

(6, 47814), (13, 47997), (26, 48471), (27, 48525), (28, 48561), (31, 48600), (Start: 34 @48657 has 1 MA's), (35, 48690), (Start: 37 @48702 has 2 MA's), (Start: 38 @48705 has 8 MA's), (39, 48708), (45, 48819), (48, 48855), (52, 48909),

Gene: Kwobi_62 Start: 49106, Stop: 49378, Start Num: 38

Candidate Starts for Kwobi_62:

(8, 48278), (13, 48398), (26, 48872), (27, 48926), (28, 48962), (31, 49001), (Start: 34 @49058 has 1 MA's), (35, 49091), (Start: 37 @49103 has 2 MA's), (Start: 38 @49106 has 8 MA's), (39, 49109), (45, 49220), (52, 49310),

Gene: LilHam_56 Start: 46247, Stop: 46519, Start Num: 38

Candidate Starts for LilHam_56:

(30, 46133), (33, 46187), (Start: 36 @46235 has 1 MA's), (Start: 38 @46247 has 8 MA's), (39, 46250), (48, 46397), (49, 46415), (52, 46451),

Gene: Lilbeanie_61 Start: 43535, Stop: 43810, Start Num: 38

Candidate Starts for Lilbeanie_61:

(22, 43082), (24, 43181), (Start: 38 @43535 has 8 MA's), (39, 43538), (44, 43607), (47, 43685), (49, 43709), (54, 43766),

Gene: McKinley_64 Start: 49837, Stop: 50109, Start Num: 38

Candidate Starts for McKinley_64:

(Start: 36 @49825 has 1 MA's), (Start: 38 @49837 has 8 MA's), (45, 49951), (48, 49987), (52, 50041),

Gene: Mutzi_76 Start: 52845, Stop: 53222, Start Num: 32

Candidate Starts for Mutzi_76:

(17, 52392), (19, 52413), (29, 52782), (Start: 32 @52845 has 23 MA's), (43, 52995), (50, 53103),

Gene: Nubi_77 Start: 51637, Stop: 52017, Start Num: 32

Candidate Starts for Nubi_77:

(25, 51451), (29, 51574), (Start: 32 @51637 has 23 MA's), (40, 51736), (53, 51946),

Gene: Phlop_76 Start: 52190, Stop: 52567, Start Num: 32

Candidate Starts for Phlop_76:

(23, 51896), (29, 52127), (Start: 32 @52190 has 23 MA's), (43, 52340), (50, 52448),

Gene: PinkCoffee_80 Start: 52131, Stop: 52499, Start Num: 32

Candidate Starts for PinkCoffee_80:

(1, 51099), (4, 51303), (29, 52068), (Start: 32 @52131 has 23 MA's), (43, 52272), (50, 52380), (51, 52407), (53, 52431),

Gene: Portcullis_79 Start: 52265, Stop: 52576, Start Num: 32

Candidate Starts for Portcullis_79:

(29, 52208), (Start: 32 @52265 has 23 MA's), (42, 52388), (43, 52403), (50, 52511),

Gene: PullumCavea_77 Start: 52367, Stop: 52744, Start Num: 32

Candidate Starts for PullumCavea_77:

(23, 52073), (29, 52304), (Start: 32 @52367 has 23 MA's), (43, 52517), (50, 52625),

Gene: Ribeye_60 Start: 48019, Stop: 48303, Start Num: 36

Candidate Starts for Ribeye_60:

(Start: 34 @47983 has 1 MA's), (35, 48016), (Start: 36 @48019 has 1 MA's), (Start: 38 @48031 has 8 MA's), (39, 48034), (45, 48145), (52, 48235),

Gene: RogerDodger_82 Start: 52955, Stop: 53332, Start Num: 32

Candidate Starts for RogerDodger_82:

(23, 52661), (29, 52892), (Start: 32 @52955 has 23 MA's), (43, 53105), (50, 53213),

Gene: Salvador_78 Start: 52310, Stop: 52687, Start Num: 32

Candidate Starts for Salvador_78:

(29, 52247), (Start: 32 @52310 has 23 MA's), (43, 52460), (50, 52568),

Gene: Saronaya_62 Start: 48964, Stop: 49236, Start Num: 38

Candidate Starts for Saronaya_62:

(27, 48784), (28, 48820), (31, 48859), (35, 48949), (Start: 37 @48961 has 2 MA's), (Start: 38 @48964 has 8 MA's), (39, 48967), (41, 49003), (45, 49078), (52, 49168),

Gene: Savbucketdawg_74 Start: 51702, Stop: 52079, Start Num: 32

Candidate Starts for Savbucketdawg_74:

(15, 51159), (16, 51195), (25, 51516), (29, 51639), (Start: 32 @51702 has 23 MA's), (43, 51852), (50, 51960),

Gene: SchottB_59 Start: 48874, Stop: 49146, Start Num: 38

Candidate Starts for SchottB_59:

(31, 48769), (Start: 34 @48826 has 1 MA's), (35, 48859), (Start: 37 @48871 has 2 MA's), (Start: 38 @48874 has 8 MA's), (39, 48877), (45, 48988), (52, 49078),

Gene: SmokingBunny_79 Start: 53306, Stop: 53683, Start Num: 32

Candidate Starts for SmokingBunny_79:

(29, 53243), (Start: 32 @53306 has 23 MA's), (43, 53456), (50, 53564),

Gene: StorminNorm_60 Start: 48603, Stop: 48878, Start Num: 37

Candidate Starts for StorminNorm_60:

(27, 48426), (28, 48462), (31, 48501), (Start: 34 @48558 has 1 MA's), (35, 48591), (Start: 37 @48603 has 2 MA's), (Start: 38 @48606 has 8 MA's), (39, 48609), (41, 48645), (45, 48720), (52, 48810),

Gene: Tangerine_61 Start: 48357, Stop: 48629, Start Num: 38

Candidate Starts for Tangerine_61:

(27, 48177), (28, 48213), (31, 48252), (35, 48342), (Start: 37 @48354 has 2 MA's), (Start: 38 @48357 has 8 MA's), (39, 48360), (41, 48396), (45, 48471), (48, 48507), (52, 48561),

Gene: Togo_78 Start: 53306, Stop: 53683, Start Num: 32
Candidate Starts for Togo_78:
(29, 53243), (Start: 32 @53306 has 23 MA's), (43, 53456), (50, 53564),

Gene: Twister6_79 Start: 51655, Stop: 52032, Start Num: 32
Candidate Starts for Twister6_79:
(29, 51592), (Start: 32 @51655 has 23 MA's), (43, 51805), (50, 51913),

Gene: Tycho_59 Start: 48079, Stop: 48399, Start Num: 34
Candidate Starts for Tycho_59:
(2, 47158), (3, 47191), (5, 47224), (7, 47278), (9, 47332), (11, 47407), (26, 47893), (27, 47947), (28, 47983), (31, 48022), (Start: 34 @48079 has 1 MA's), (35, 48112), (Start: 37 @48124 has 2 MA's), (Start: 38 @48127 has 8 MA's), (39, 48130), (45, 48241), (52, 48331),

Gene: Valary_79 Start: 52962, Stop: 53339, Start Num: 32
Candidate Starts for Valary_79:
(15, 52419), (16, 52455), (25, 52776), (29, 52899), (Start: 32 @52962 has 23 MA's), (43, 53112), (50, 53220), (51, 53247), (53, 53271),

Gene: Wizard_75 Start: 52140, Stop: 52517, Start Num: 32
Candidate Starts for Wizard_75:
(15, 51597), (16, 51633), (25, 51954), (29, 52077), (Start: 32 @52140 has 23 MA's), (43, 52290), (50, 52398),

Gene: YungMoney_77 Start: 53685, Stop: 54062, Start Num: 32
Candidate Starts for YungMoney_77:
(17, 53232), (19, 53253), (29, 53622), (Start: 32 @53685 has 23 MA's), (43, 53835), (50, 53943),