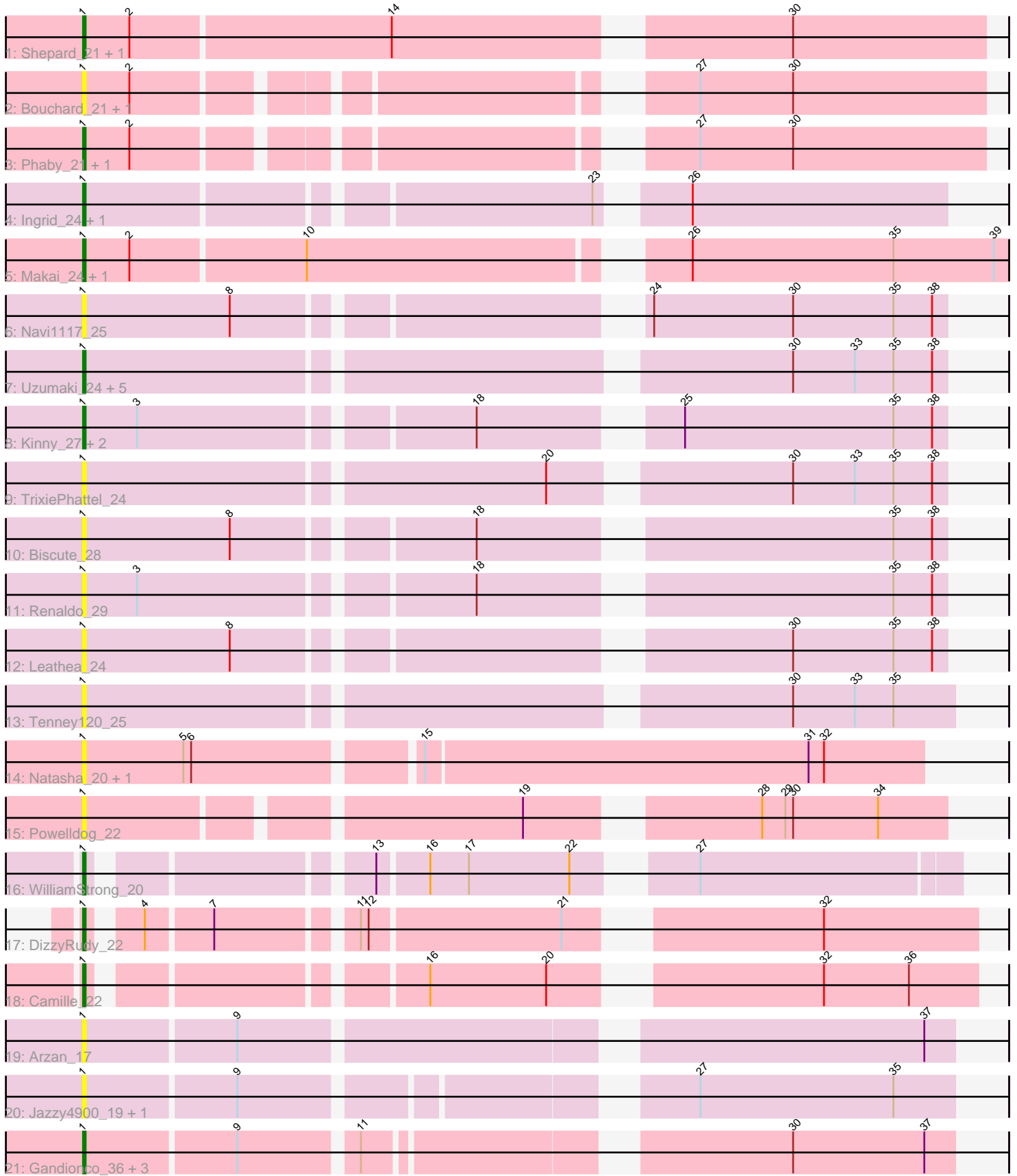


Pham 223271



Note: Tracks are now grouped by subcluster and scaled. Switching in subcluster is indicated by changes in track color. Track scale is now set by default to display the region 30 bp upstream of start 1 to 30 bp downstream of the last possible start. If this default region is judged to be packed too tightly with annotated starts, the track will be further scaled to only show that region of the ORF with annotated starts. This action will be indicated by adding "Zoomed" to the title. For starts, yellow indicates the location of called starts comprised solely of Glimmer/GeneMark auto-annotations, green indicates the location of called starts with at least 1 manual gene annotation.

## Pham 223271 Report

This analysis was run 03/28/25 on database version 593.

Pham number 223271 has 38 members, 20 are drafts.

Phages represented in each track:

- Track 1 : Shepard\_21, LilHuddy\_21
- Track 2 : Bouchard\_21, Chlochlo\_21
- Track 3 : Phaby\_21, Tokki\_21
- Track 4 : Ingrid\_24, Loretta\_24
- Track 5 : Makai\_24, Truckee\_23
- Track 6 : Navi1117\_25
- Track 7 : Uzumaki\_24, Phaila\_23, GantcherGoblin\_23, Argan\_23, KevinMinion\_24, Zeina\_24
- Track 8 : Kinny\_27, BarbieDoll\_27, Lewando\_27
- Track 9 : TrixiePhattel\_24
- Track 10 : Biscute\_28
- Track 11 : Renaldo\_29
- Track 12 : Leathea\_24
- Track 13 : Tenney120\_25
- Track 14 : Natasha\_20, RustyBoy\_20
- Track 15 : PowellDog\_22
- Track 16 : WilliamStrong\_20
- Track 17 : DizzyRudy\_22
- Track 18 : Camille\_22
- Track 19 : Arzan\_17
- Track 20 : Jazzy4900\_19, Sunny4976\_18
- Track 21 : Gandionco\_36, Paella\_35, Qui\_35, Elver\_34

### ***Summary of Final Annotations (See graph section above for start numbers):***

The start number called the most often in the published annotations is 1, it was called in 18 of the 18 non-draft genes in the pham.

Genes that call this "Most Annotated" start:

- Argan\_23, Arzan\_17, BarbieDoll\_27, Biscute\_28, Bouchard\_21, Camille\_22, Chlochlo\_21, DizzyRudy\_22, Elver\_34, Gandionco\_36, GantcherGoblin\_23, Ingrid\_24, Jazzy4900\_19, KevinMinion\_24, Kinny\_27, Leathea\_24, Lewando\_27, LilHuddy\_21, Loretta\_24, Makai\_24, Natasha\_20, Navi1117\_25, Paella\_35, Phaby\_21, Phaila\_23, PowellDog\_22, Qui\_35, Renaldo\_29, RustyBoy\_20,

Shepard\_21, Sunny4976\_18, Tenney120\_25, Tokki\_21, TrixiePhattel\_24, Truckee\_23, Uzumaki\_24, WilliamStrong\_20, Zeina\_24,

Genes that have the "Most Annotated" start but do not call it:

- 

Genes that do not have the "Most Annotated" start:

- 

### Summary by start number:

Start 1:

- Found in 38 of 38 ( 100.0% ) of genes in pham
- Manual Annotations of this start: 18 of 18
- Called 100.0% of time when present
- Phage (with cluster) where this start called: Argan\_23 (AU6), Arzan\_17 (FI), BarbieDoll\_27 (AU6), Biscute\_28 (AU6), Bouchard\_21 (AU2), Camille\_22 (EL), Chlochlo\_21 (AU2), DizzyRudy\_22 (EL), Elver\_34 (FK), Gandionco\_36 (FK), GantcherGoblin\_23 (AU6), Ingrid\_24 (AU3), Jazzy4900\_19 (FI), KevinMinion\_24 (AU6), Kinny\_27 (AU6), Leathea\_24 (AU6), Lewando\_27 (AU6), LilHuddy\_21 (AU2), Loretta\_24 (AU3), Makai\_24 (AU5), Natasha\_20 (AW), Navi1117\_25 (AU6), Paella\_35 (FK), Phaby\_21 (AU2), Phaila\_23 (AU6), PowellDog\_22 (AW), Qui\_35 (FK), Renaldo\_29 (AU6), RustyBoy\_20 (AW), Shepard\_21 (AU2), Sunny4976\_18 (FI), Tenney120\_25 (AU6), Tokki\_21 (AU2), TrixiePhattel\_24 (AU6), Truckee\_23 (AU5), Uzumaki\_24 (AU6), WilliamStrong\_20 (EA6), Zeina\_24 (AU6),

### Summary by clusters:

There are 9 clusters represented in this pham: EL, AU3, AU2, AU5, AW, AU6, FI, FK, EA6,

Info for manual annotations of cluster AU2:

- Start number 1 was manually annotated 4 times for cluster AU2.

Info for manual annotations of cluster AU3:

- Start number 1 was manually annotated 2 times for cluster AU3.

Info for manual annotations of cluster AU5:

- Start number 1 was manually annotated 2 times for cluster AU5.

Info for manual annotations of cluster AU6:

- Start number 1 was manually annotated 5 times for cluster AU6.

Info for manual annotations of cluster EA6:

- Start number 1 was manually annotated 1 time for cluster EA6.

Info for manual annotations of cluster EL:

- Start number 1 was manually annotated 2 times for cluster EL.

Info for manual annotations of cluster FK:

- Start number 1 was manually annotated 2 times for cluster FK.

**Gene Information:**

Gene: Argan\_23 Start: 18250, Stop: 18561, Start Num: 1

Candidate Starts for Argan\_23:

(Start: 1 @18250 has 18 MA's), (30, 18502), (33, 18526), (35, 18541), (38, 18556),

Gene: Arzan\_17 Start: 13586, Stop: 13897, Start Num: 1

Candidate Starts for Arzan\_17:

(Start: 1 @13586 has 18 MA's), (9, 13643), (37, 13886),

Gene: BarbieDoll\_27 Start: 20223, Stop: 20528, Start Num: 1

Candidate Starts for BarbieDoll\_27:

(Start: 1 @20223 has 18 MA's), (3, 20244), (18, 20364), (25, 20427), (35, 20508), (38, 20523),

Gene: Biscute\_28 Start: 19871, Stop: 20176, Start Num: 1

Candidate Starts for Biscute\_28:

(Start: 1 @19871 has 18 MA's), (8, 19928), (18, 20012), (35, 20156), (38, 20171),

Gene: Bouchard\_21 Start: 15852, Stop: 16163, Start Num: 1

Candidate Starts for Bouchard\_21:

(Start: 1 @15852 has 18 MA's), (2, 15870), (27, 16053), (30, 16089),

Gene: Camille\_22 Start: 15564, Stop: 15866, Start Num: 1

Candidate Starts for Camille\_22:

(Start: 1 @15564 has 18 MA's), (16, 15675), (20, 15720), (32, 15807), (36, 15840),

Gene: Chlochlo\_21 Start: 15881, Stop: 16192, Start Num: 1

Candidate Starts for Chlochlo\_21:

(Start: 1 @15881 has 18 MA's), (2, 15899), (27, 16082), (30, 16118),

Gene: DizzyRudy\_22 Start: 16175, Stop: 16477, Start Num: 1

Candidate Starts for DizzyRudy\_22:

(Start: 1 @16175 has 18 MA's), (4, 16190), (7, 16214), (11, 16262), (12, 16265), (21, 16337), (32, 16418),

Gene: Elver\_34 Start: 24623, Stop: 24928, Start Num: 1

Candidate Starts for Elver\_34:

(Start: 1 @24623 has 18 MA's), (9, 24680), (11, 24722), (30, 24866), (37, 24917),

Gene: Gandionco\_36 Start: 25145, Stop: 25450, Start Num: 1

Candidate Starts for Gandionco\_36:

(Start: 1 @25145 has 18 MA's), (9, 25202), (11, 25244), (30, 25388), (37, 25439),

Gene: GantcherGoblin\_23 Start: 18289, Stop: 18600, Start Num: 1

Candidate Starts for GantcherGoblin\_23:

(Start: 1 @18289 has 18 MA's), (30, 18541), (33, 18565), (35, 18580), (38, 18595),

Gene: Ingrid\_24 Start: 19170, Stop: 19475, Start Num: 1

Candidate Starts for Ingrid\_24:

(Start: 1 @19170 has 18 MA's), (23, 19353), (26, 19377),

Gene: Jazzy4900\_19 Start: 13619, Stop: 13924, Start Num: 1  
Candidate Starts for Jazzy4900\_19:  
(Start: 1 @13619 has 18 MA's), (9, 13676), (27, 13826), (35, 13901),

Gene: KevinMinion\_24 Start: 19383, Stop: 19694, Start Num: 1  
Candidate Starts for KevinMinion\_24:  
(Start: 1 @19383 has 18 MA's), (30, 19635), (33, 19659), (35, 19674), (38, 19689),

Gene: Kinny\_27 Start: 20136, Stop: 20441, Start Num: 1  
Candidate Starts for Kinny\_27:  
(Start: 1 @20136 has 18 MA's), (3, 20157), (18, 20277), (25, 20340), (35, 20421), (38, 20436),

Gene: Leathea\_24 Start: 18272, Stop: 18577, Start Num: 1  
Candidate Starts for Leathea\_24:  
(Start: 1 @18272 has 18 MA's), (8, 18329), (30, 18518), (35, 18557), (38, 18572),

Gene: Lewando\_27 Start: 20205, Stop: 20510, Start Num: 1  
Candidate Starts for Lewando\_27:  
(Start: 1 @20205 has 18 MA's), (3, 20226), (18, 20346), (25, 20409), (35, 20490), (38, 20505),

Gene: LilHuddy\_21 Start: 15875, Stop: 16204, Start Num: 1  
Candidate Starts for LilHuddy\_21:  
(Start: 1 @15875 has 18 MA's), (2, 15893), (14, 15992), (30, 16130),

Gene: Loretta\_24 Start: 19170, Stop: 19475, Start Num: 1  
Candidate Starts for Loretta\_24:  
(Start: 1 @19170 has 18 MA's), (23, 19353), (26, 19377),

Gene: Makai\_24 Start: 19380, Stop: 19715, Start Num: 1  
Candidate Starts for Makai\_24:  
(Start: 1 @19380 has 18 MA's), (2, 19398), (10, 19464), (26, 19593), (35, 19671), (39, 19710),

Gene: Natasha\_20 Start: 15947, Stop: 16261, Start Num: 1  
Candidate Starts for Natasha\_20:  
(Start: 1 @15947 has 18 MA's), (5, 15986), (6, 15989), (15, 16070), (31, 16217), (32, 16223),

Gene: Navi1117\_25 Start: 18540, Stop: 18845, Start Num: 1  
Candidate Starts for Navi1117\_25:  
(Start: 1 @18540 has 18 MA's), (8, 18597), (24, 18732), (30, 18786), (35, 18825), (38, 18840),

Gene: Paella\_35 Start: 24625, Stop: 24930, Start Num: 1  
Candidate Starts for Paella\_35:  
(Start: 1 @24625 has 18 MA's), (9, 24682), (11, 24724), (30, 24868), (37, 24919),

Gene: Phaby\_21 Start: 15846, Stop: 16157, Start Num: 1  
Candidate Starts for Phaby\_21:  
(Start: 1 @15846 has 18 MA's), (2, 15864), (27, 16047), (30, 16083),

Gene: Phaila\_23 Start: 17867, Stop: 18178, Start Num: 1  
Candidate Starts for Phaila\_23:  
(Start: 1 @17867 has 18 MA's), (30, 18119), (33, 18143), (35, 18158), (38, 18173),

Gene: Powelldog\_22 Start: 16306, Stop: 16608, Start Num: 1  
Candidate Starts for Powelldog\_22:  
(Start: 1 @16306 has 18 MA's), (19, 16462), (28, 16537), (29, 16546), (30, 16549), (34, 16582),

Gene: Qui\_35 Start: 24625, Stop: 24930, Start Num: 1  
Candidate Starts for Qui\_35:  
(Start: 1 @24625 has 18 MA's), (9, 24682), (11, 24724), (30, 24868), (37, 24919),

Gene: Renaldo\_29 Start: 20214, Stop: 20519, Start Num: 1  
Candidate Starts for Renaldo\_29:  
(Start: 1 @20214 has 18 MA's), (3, 20235), (18, 20355), (35, 20499), (38, 20514),

Gene: RustyBoy\_20 Start: 15947, Stop: 16243, Start Num: 1  
Candidate Starts for RustyBoy\_20:  
(Start: 1 @15947 has 18 MA's), (5, 15986), (6, 15989), (15, 16070), (31, 16199), (32, 16205),

Gene: Shepard\_21 Start: 15872, Stop: 16201, Start Num: 1  
Candidate Starts for Shepard\_21:  
(Start: 1 @15872 has 18 MA's), (2, 15890), (14, 15989), (30, 16127),

Gene: Sunny4976\_18 Start: 13619, Stop: 13924, Start Num: 1  
Candidate Starts for Sunny4976\_18:  
(Start: 1 @13619 has 18 MA's), (9, 13676), (27, 13826), (35, 13901),

Gene: Tenney120\_25 Start: 18575, Stop: 18889, Start Num: 1  
Candidate Starts for Tenney120\_25:  
(Start: 1 @18575 has 18 MA's), (30, 18827), (33, 18851), (35, 18866),

Gene: Tokki\_21 Start: 15896, Stop: 16207, Start Num: 1  
Candidate Starts for Tokki\_21:  
(Start: 1 @15896 has 18 MA's), (2, 15914), (27, 16097), (30, 16133),

Gene: TrixiePhattel\_24 Start: 18491, Stop: 18802, Start Num: 1  
Candidate Starts for TrixiePhattel\_24:  
(Start: 1 @18491 has 18 MA's), (20, 18662), (30, 18743), (33, 18767), (35, 18782), (38, 18797),

Gene: Truckee\_23 Start: 19425, Stop: 19760, Start Num: 1  
Candidate Starts for Truckee\_23:  
(Start: 1 @19425 has 18 MA's), (2, 19443), (10, 19509), (26, 19638), (35, 19716), (39, 19755),

Gene: Uzumaki\_24 Start: 19108, Stop: 19419, Start Num: 1  
Candidate Starts for Uzumaki\_24:  
(Start: 1 @19108 has 18 MA's), (30, 19360), (33, 19384), (35, 19399), (38, 19414),

Gene: WilliamStrong\_20 Start: 17840, Stop: 18136, Start Num: 1  
Candidate Starts for WilliamStrong\_20:  
(Start: 1 @17840 has 18 MA's), (13, 17933), (16, 17951), (17, 17966), (22, 18005), (27, 18038),

Gene: Zeina\_24 Start: 18489, Stop: 18800, Start Num: 1  
Candidate Starts for Zeina\_24:  
(Start: 1 @18489 has 18 MA's), (30, 18741), (33, 18765), (35, 18780), (38, 18795),