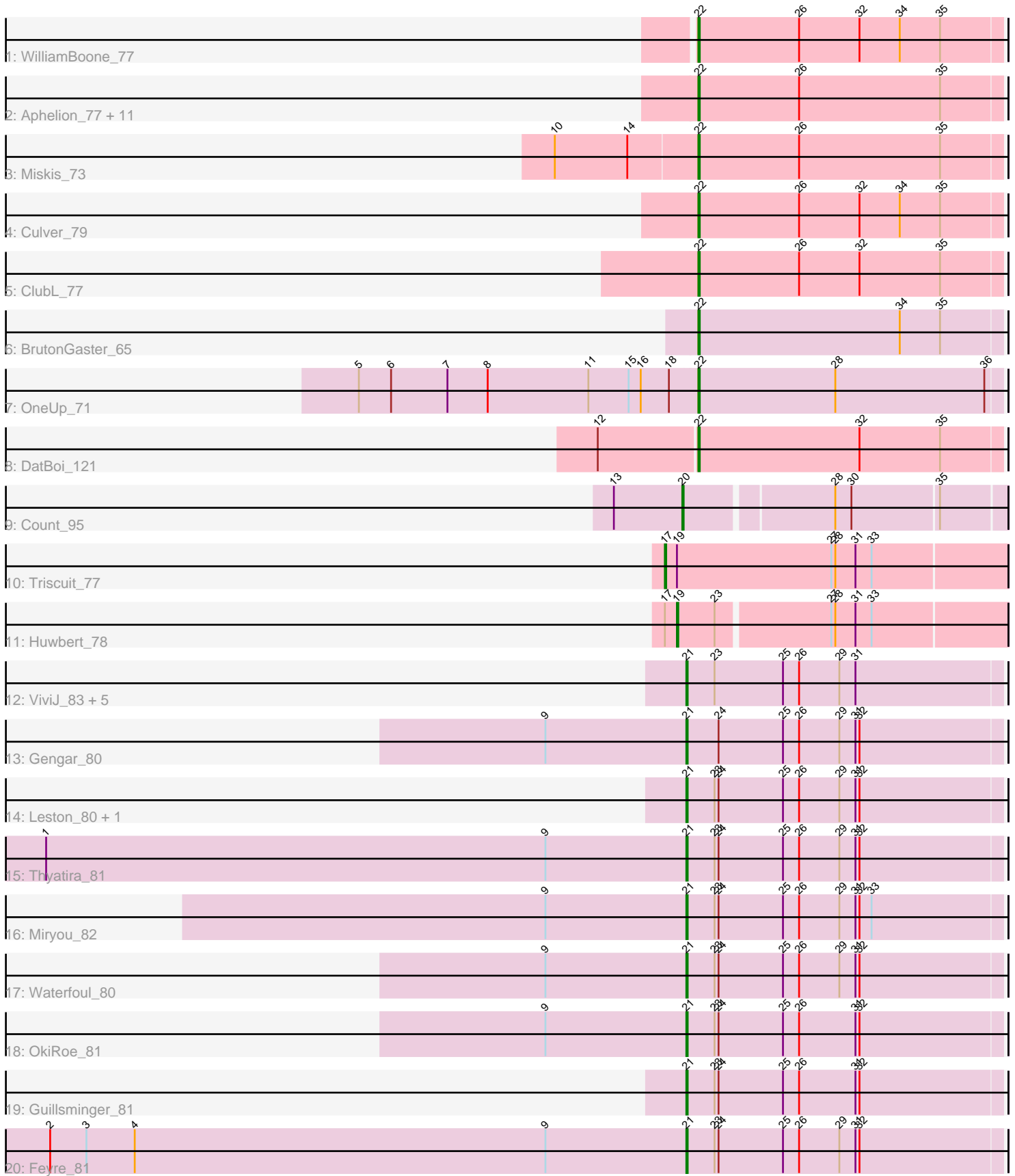


Pham 223284



Note: Tracks are now grouped by subcluster and scaled. Switching in subcluster is indicated by changes in track color. Track scale is now set by default to display the region 30 bp upstream of start 1 to 30 bp downstream of the last possible start. If this default region is judged to be packed too tightly with annotated starts, the track will be further scaled to only show that region of the ORF with annotated starts. This action will be indicated by adding "Zoomed" to the title. For starts, yellow indicates the location of called starts comprised solely of Glimmer/GeneMark auto-annotations, green indicates the location of called starts with at least 1 manual gene annotation.

Pham 223284 Report

This analysis was run 03/28/25 on database version 593.

Pham number 223284 has 37 members, 3 are drafts.

Phages represented in each track:

- Track 1 : WilliamBoone_77
- Track 2 : Aphelion_77, Toniann_78, Bachita_79, Norvs_78, Geeche_76, Smoothie_79, Cucurbita_79, PhinkBoden_77, Abscondus_77, Dusty_74, Engineer_79, Lozinak_78
- Track 3 : Miskis_73
- Track 4 : Culver_79
- Track 5 : ClubL_77
- Track 6 : BrutonGaster_65
- Track 7 : OneUp_71
- Track 8 : DatBoi_121
- Track 9 : Count_95
- Track 10 : Triscuit_77
- Track 11 : Huwbert_78
- Track 12 : ViviJ_83, InvictusManeo_76, SoSeph_78, Collard_76, Heftyboy_78, Agent47_78
- Track 13 : Gengar_80
- Track 14 : Leston_80, Paola_80
- Track 15 : Thyatira_81
- Track 16 : Miryou_82
- Track 17 : Waterfoul_80
- Track 18 : OkiRoe_81
- Track 19 : Guillsminger_81
- Track 20 : Feyre_81

Summary of Final Annotations (See graph section above for start numbers):

The start number called the most often in the published annotations is 22, it was called in 17 of the 34 non-draft genes in the pham.

Genes that call this "Most Annotated" start:

- Abscondus_77, Aphelion_77, Bachita_79, BrutonGaster_65, ClubL_77, Cucurbita_79, Culver_79, DatBoi_121, Dusty_74, Engineer_79, Geeche_76, Lozinak_78, Miskis_73, Norvs_78, OneUp_71, PhinkBoden_77, Smoothie_79, Toniann_78, WilliamBoone_77,

Genes that have the "Most Annotated" start but do not call it:

-

Genes that do not have the "Most Annotated" start:

- Agent47_78, Collard_76, Count_95, Feyre_81, Gengar_80, Guillsminger_81, Heftyboy_78, Huwbert_78, InvictusManeo_76, Leston_80, Miryou_82, OkiRoe_81, Paola_80, SoSeph_78, Thyatira_81, Triscuit_77, ViviJ_83, Waterfoul_80,

Summary by start number:

Start 17:

- Found in 2 of 37 (5.4%) of genes in pham
- Manual Annotations of this start: 1 of 34
- Called 50.0% of time when present
- Phage (with cluster) where this start called: Triscuit_77 (GG),

Start 19:

- Found in 2 of 37 (5.4%) of genes in pham
- Manual Annotations of this start: 1 of 34
- Called 50.0% of time when present
- Phage (with cluster) where this start called: Huwbert_78 (GG),

Start 20:

- Found in 1 of 37 (2.7%) of genes in pham
- Manual Annotations of this start: 1 of 34
- Called 100.0% of time when present
- Phage (with cluster) where this start called: Count_95 (EL),

Start 21:

- Found in 15 of 37 (40.5%) of genes in pham
- Manual Annotations of this start: 14 of 34
- Called 100.0% of time when present
- Phage (with cluster) where this start called: Agent47_78 (K5), Collard_76 (K5), Feyre_81 (K5), Gengar_80 (K5), Guillsminger_81 (K5), Heftyboy_78 (K5), InvictusManeo_76 (K5), Leston_80 (K5), Miryou_82 (K5), OkiRoe_81 (K5), Paola_80 (K5), SoSeph_78 (K5), Thyatira_81 (K5), ViviJ_83 (K5), Waterfoul_80 (K5),

Start 22:

- Found in 19 of 37 (51.4%) of genes in pham
- Manual Annotations of this start: 17 of 34
- Called 100.0% of time when present
- Phage (with cluster) where this start called: Abscondus_77 (CQ1), Aphelion_77 (CQ1), Bachita_79 (CQ1), BrutonGaster_65 (CQ2), ClubL_77 (CQ1), Cucurbita_79 (CQ1), Culver_79 (CQ1), DatBoi_121 (DL), Dusty_74 (CQ1), Engineer_79 (CQ1), Geeche_76 (CQ1), Lozinak_78 (CQ1), Miskis_73 (CQ1), Norvs_78 (CQ1), OneUp_71 (CQ2), PhinkBoden_77 (CQ1), Smoothie_79 (CQ1), Toniann_78 (CQ1), WilliamBoone_77 (CQ1),

Summary by clusters:

There are 6 clusters represented in this pham: EL, DL, GG, K5, CQ2, CQ1,

Info for manual annotations of cluster CQ1:

- Start number 22 was manually annotated 14 times for cluster CQ1.

Info for manual annotations of cluster CQ2:

- Start number 22 was manually annotated 2 times for cluster CQ2.

Info for manual annotations of cluster DL:

- Start number 22 was manually annotated 1 time for cluster DL.

Info for manual annotations of cluster EL:

- Start number 20 was manually annotated 1 time for cluster EL.

Info for manual annotations of cluster GG:

- Start number 17 was manually annotated 1 time for cluster GG.
- Start number 19 was manually annotated 1 time for cluster GG.

Info for manual annotations of cluster K5:

- Start number 21 was manually annotated 14 times for cluster K5.

Gene Information:

Gene: Abscondus_77 Start: 49287, Stop: 49511, Start Num: 22

Candidate Starts for Abscondus_77:

(Start: 22 @49287 has 17 MA's), (26, 49362), (35, 49467),

Gene: Agent47_78 Start: 51521, Stop: 51754, Start Num: 21

Candidate Starts for Agent47_78:

(Start: 21 @51521 has 14 MA's), (23, 51542), (25, 51593), (26, 51605), (29, 51635), (31, 51647),

Gene: Aphelion_77 Start: 49909, Stop: 50133, Start Num: 22

Candidate Starts for Aphelion_77:

(Start: 22 @49909 has 17 MA's), (26, 49984), (35, 50089),

Gene: Bachita_79 Start: 50334, Stop: 50558, Start Num: 22

Candidate Starts for Bachita_79:

(Start: 22 @50334 has 17 MA's), (26, 50409), (35, 50514),

Gene: BrutonGaster_65 Start: 46510, Stop: 46734, Start Num: 22

Candidate Starts for BrutonGaster_65:

(Start: 22 @46510 has 17 MA's), (34, 46660), (35, 46690),

Gene: ClubL_77 Start: 49022, Stop: 49246, Start Num: 22

Candidate Starts for ClubL_77:

(Start: 22 @49022 has 17 MA's), (26, 49097), (32, 49142), (35, 49202),

Gene: Collard_76 Start: 51485, Stop: 51718, Start Num: 21

Candidate Starts for Collard_76:

(Start: 21 @51485 has 14 MA's), (23, 51506), (25, 51557), (26, 51569), (29, 51599), (31, 51611),

Gene: Count_95 Start: 61678, Stop: 61905, Start Num: 20

Candidate Starts for Count_95:

(13, 61627), (Start: 20 @61678 has 1 MA's), (28, 61783), (30, 61795), (35, 61858),

Gene: Cucurbita_79 Start: 50841, Stop: 51065, Start Num: 22

Candidate Starts for Cucurbita_79:

(Start: 22 @50841 has 17 MA's), (26, 50916), (35, 51021),

Gene: Culver_79 Start: 48945, Stop: 49169, Start Num: 22

Candidate Starts for Culver_79:

(Start: 22 @48945 has 17 MA's), (26, 49020), (32, 49065), (34, 49095), (35, 49125),

Gene: DatBoi_121 Start: 74737, Stop: 74961, Start Num: 22

Candidate Starts for DatBoi_121:

(12, 74665), (Start: 22 @74737 has 17 MA's), (32, 74857), (35, 74917),

Gene: Dusty_74 Start: 48534, Stop: 48758, Start Num: 22

Candidate Starts for Dusty_74:

(Start: 22 @48534 has 17 MA's), (26, 48609), (35, 48714),

Gene: Engineer_79 Start: 50307, Stop: 50531, Start Num: 22

Candidate Starts for Engineer_79:

(Start: 22 @50307 has 17 MA's), (26, 50382), (35, 50487),

Gene: Feyre_81 Start: 55182, Stop: 55415, Start Num: 21

Candidate Starts for Feyre_81:

(2, 54708), (3, 54735), (4, 54771), (9, 55077), (Start: 21 @55182 has 14 MA's), (23, 55203), (24, 55206), (25, 55254), (26, 55266), (29, 55296), (31, 55308), (32, 55311),

Gene: Geeche_76 Start: 49371, Stop: 49595, Start Num: 22

Candidate Starts for Geeche_76:

(Start: 22 @49371 has 17 MA's), (26, 49446), (35, 49551),

Gene: Gengar_80 Start: 53997, Stop: 54230, Start Num: 21

Candidate Starts for Gengar_80:

(9, 53892), (Start: 21 @53997 has 14 MA's), (24, 54021), (25, 54069), (26, 54081), (29, 54111), (31, 54123), (32, 54126),

Gene: Guillsminger_81 Start: 53845, Stop: 54078, Start Num: 21

Candidate Starts for Guillsminger_81:

(Start: 21 @53845 has 14 MA's), (23, 53866), (24, 53869), (25, 53917), (26, 53929), (31, 53971), (32, 53974),

Gene: Heftyboy_78 Start: 53212, Stop: 53445, Start Num: 21

Candidate Starts for Heftyboy_78:

(Start: 21 @53212 has 14 MA's), (23, 53233), (25, 53284), (26, 53296), (29, 53326), (31, 53338),

Gene: Huwbert_78 Start: 48165, Stop: 48401, Start Num: 19

Candidate Starts for Huwbert_78:

(Start: 17 @48156 has 1 MA's), (Start: 19 @48165 has 1 MA's), (23, 48192), (27, 48273), (28, 48276), (31, 48291), (33, 48303),

Gene: InvictusManeo_76 Start: 51525, Stop: 51758, Start Num: 21

Candidate Starts for InvictusManeo_76:

(Start: 21 @51525 has 14 MA's), (23, 51546), (25, 51597), (26, 51609), (29, 51639), (31, 51651),

Gene: Leston_80 Start: 53962, Stop: 54195, Start Num: 21

Candidate Starts for Leston_80:

(Start: 21 @53962 has 14 MA's), (23, 53983), (24, 53986), (25, 54034), (26, 54046), (29, 54076), (31, 54088), (32, 54091),

Gene: Lozinak_78 Start: 50145, Stop: 50369, Start Num: 22

Candidate Starts for Lozinak_78:

(Start: 22 @50145 has 17 MA's), (26, 50220), (35, 50325),

Gene: Miryou_82 Start: 55820, Stop: 56053, Start Num: 21

Candidate Starts for Miryou_82:

(9, 55715), (Start: 21 @55820 has 14 MA's), (23, 55841), (24, 55844), (25, 55892), (26, 55904), (29, 55934), (31, 55946), (32, 55949), (33, 55958),

Gene: Miskis_73 Start: 48618, Stop: 48842, Start Num: 22

Candidate Starts for Miskis_73:

(10, 48513), (14, 48567), (Start: 22 @48618 has 17 MA's), (26, 48693), (35, 48798),

Gene: Norvs_78 Start: 49554, Stop: 49778, Start Num: 22

Candidate Starts for Norvs_78:

(Start: 22 @49554 has 17 MA's), (26, 49629), (35, 49734),

Gene: OkiRoe_81 Start: 54960, Stop: 55193, Start Num: 21

Candidate Starts for OkiRoe_81:

(9, 54855), (Start: 21 @54960 has 14 MA's), (23, 54981), (24, 54984), (25, 55032), (26, 55044), (31, 55086), (32, 55089),

Gene: OneUp_71 Start: 48247, Stop: 48471, Start Num: 22

Candidate Starts for OneUp_71:

(5, 48001), (6, 48025), (7, 48067), (8, 48097), (11, 48172), (15, 48202), (16, 48211), (18, 48232), (Start: 22 @48247 has 17 MA's), (28, 48349), (36, 48460),

Gene: Paola_80 Start: 53845, Stop: 54078, Start Num: 21

Candidate Starts for Paola_80:

(Start: 21 @53845 has 14 MA's), (23, 53866), (24, 53869), (25, 53917), (26, 53929), (29, 53959), (31, 53971), (32, 53974),

Gene: PhinkBoden_77 Start: 49935, Stop: 50159, Start Num: 22

Candidate Starts for PhinkBoden_77:

(Start: 22 @49935 has 17 MA's), (26, 50010), (35, 50115),

Gene: Smoothie_79 Start: 50145, Stop: 50369, Start Num: 22

Candidate Starts for Smoothie_79:

(Start: 22 @50145 has 17 MA's), (26, 50220), (35, 50325),

Gene: SoSeph_78 Start: 53212, Stop: 53445, Start Num: 21

Candidate Starts for SoSeph_78:

(Start: 21 @53212 has 14 MA's), (23, 53233), (25, 53284), (26, 53296), (29, 53326), (31, 53338),

Gene: Thyatira_81 Start: 55557, Stop: 55790, Start Num: 21

Candidate Starts for Thyatira_81:

(1, 55080), (9, 55452), (Start: 21 @55557 has 14 MA's), (23, 55578), (24, 55581), (25, 55629), (26, 55641), (29, 55671), (31, 55683), (32, 55686),

Gene: Toniann_78 Start: 49497, Stop: 49721, Start Num: 22

Candidate Starts for Toniann_78:

(Start: 22 @49497 has 17 MA's), (26, 49572), (35, 49677),

Gene: Triscuit_77 Start: 48116, Stop: 48367, Start Num: 17

Candidate Starts for Triscuit_77:

(Start: 17 @48116 has 1 MA's), (Start: 19 @48125 has 1 MA's), (27, 48239), (28, 48242), (31, 48257), (33, 48269),

Gene: ViviJ_83 Start: 53574, Stop: 53807, Start Num: 21

Candidate Starts for ViviJ_83:

(Start: 21 @53574 has 14 MA's), (23, 53595), (25, 53646), (26, 53658), (29, 53688), (31, 53700),

Gene: Waterfoul_80 Start: 53627, Stop: 53860, Start Num: 21

Candidate Starts for Waterfoul_80:

(9, 53522), (Start: 21 @53627 has 14 MA's), (23, 53648), (24, 53651), (25, 53699), (26, 53711), (29, 53741), (31, 53753), (32, 53756),

Gene: WilliamBoone_77 Start: 48245, Stop: 48469, Start Num: 22

Candidate Starts for WilliamBoone_77:

(Start: 22 @48245 has 17 MA's), (26, 48320), (32, 48365), (34, 48395), (35, 48425),