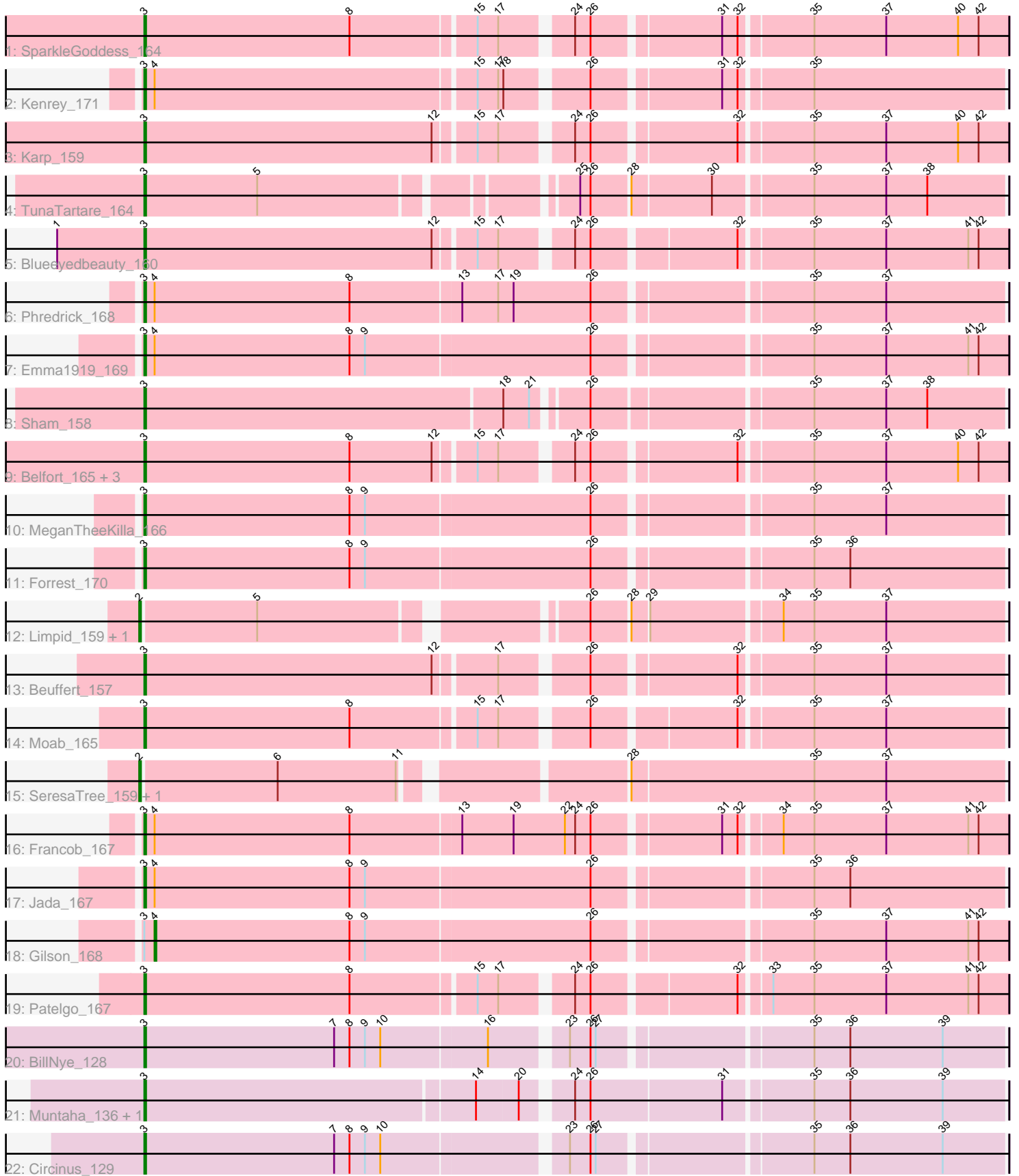


Pham 223354



Note: Tracks are now grouped by subcluster and scaled. Switching in subcluster is indicated by changes in track color. Track scale is now set by default to display the region 30 bp upstream of start 1 to 30 bp downstream of the last possible start. If this default region is judged to be packed too tightly with annotated starts, the track will be further scaled to only show that region of the ORF with annotated starts. This action will be indicated by adding "Zoomed" to the title. For starts, yellow indicates the location of called starts comprised solely of Glimmer/GeneMark auto-annotations, green indicates the location of called starts with at least 1 manual gene annotation.

Pham 223354 Report

This analysis was run 03/28/25 on database version 593.

Pham number 223354 has 28 members, 2 are drafts.

Phages represented in each track:

- Track 1 : SparkleGoddess_164
- Track 2 : Kenrey_171
- Track 3 : Karp_159
- Track 4 : TunaTartare_164
- Track 5 : Blueeyedbeauty_160
- Track 6 : Phredrick_168
- Track 7 : Emma1919_169
- Track 8 : Sham_158
- Track 9 : Belfort_165, Comrade_162, Westy_166, Stigma_163
- Track 10 : MeganTheeKilla_166
- Track 11 : Forrest_170
- Track 12 : Limpid_159, Annadreamy_152
- Track 13 : Beuffert_157
- Track 14 : Moab_165
- Track 15 : SeresaTree_159, Faust_157
- Track 16 : Francob_167
- Track 17 : Jada_167
- Track 18 : Gilson_168
- Track 19 : Patelgo_167
- Track 20 : BillNye_128
- Track 21 : Muntaha_136, Wakanda_135
- Track 22 : Circinus_129

Summary of Final Annotations (See graph section above for start numbers):

The start number called the most often in the published annotations is 3, it was called in 22 of the 26 non-draft genes in the pham.

Genes that call this "Most Annotated" start:

• Belfort_165, Beuffert_157, BillNye_128, Blueeyedbeauty_160, Circinus_129, Comrade_162, Emma1919_169, Forrest_170, Francob_167, Jada_167, Karp_159, Kenrey_171, MeganTheeKilla_166, Moab_165, Muntaha_136, Patelgo_167, Phredrick_168, Sham_158, SparkleGoddess_164, Stigma_163, TunaTartare_164, Wakanda_135, Westy_166,

Genes that have the "Most Annotated" start but do not call it:

- Gilson_168,

Genes that do not have the "Most Annotated" start:

- Annadreamy_152, Faust_157, Limpid_159, SeresaTree_159,

Summary by start number:

Start 2:

- Found in 4 of 28 (14.3%) of genes in pham
- Manual Annotations of this start: 3 of 26
- Called 100.0% of time when present
- Phage (with cluster) where this start called: Annadreamy_152 (BK1), Faust_157 (BK1), Limpid_159 (BK1), SeresaTree_159 (BK1),

Start 3:

- Found in 24 of 28 (85.7%) of genes in pham
- Manual Annotations of this start: 22 of 26
- Called 95.8% of time when present
- Phage (with cluster) where this start called: Belfort_165 (BK1), Beuffert_157 (BK1), BillNye_128 (BK2), Blueeyedbeauty_160 (BK1), Circinus_129 (BK2), Comrade_162 (BK1), Emma1919_169 (BK1), Forrest_170 (BK1), Francob_167 (BK1), Jada_167 (BK1), Karp_159 (BK1), Kenrey_171 (BK1), MeganTheeKilla_166 (BK1), Moab_165 (BK1), Muntaha_136 (BK2), Patelgo_167 (BK1), Phredrick_168 (BK1), Sham_158 (BK1), SparkleGoddess_164 (BK1), Stigma_163 (BK1), TunaTartare_164 (BK1), Wakanda_135 (BK2), Westy_166 (BK1),

Start 4:

- Found in 6 of 28 (21.4%) of genes in pham
- Manual Annotations of this start: 1 of 26
- Called 16.7% of time when present
- Phage (with cluster) where this start called: Gilson_168 (BK1),

Summary by clusters:

There are 2 clusters represented in this pham: BK1, BK2,

Info for manual annotations of cluster BK1:

- Start number 2 was manually annotated 3 times for cluster BK1.
- Start number 3 was manually annotated 18 times for cluster BK1.
- Start number 4 was manually annotated 1 time for cluster BK1.

Info for manual annotations of cluster BK2:

- Start number 3 was manually annotated 4 times for cluster BK2.

Gene Information:

Gene: Annadreamy_152 Start: 82558, Stop: 83025, Start Num: 2

Candidate Starts for Annadreamy_152:

(Start: 2 @82558 has 3 MA's), (5, 82624), (26, 82795), (28, 82816), (29, 82825), (34, 82897), (35, 82915), (37, 82957),

Gene: Belfort_165 Start: 88488, Stop: 88964, Start Num: 3

Candidate Starts for Belfort_165:

(Start: 3 @88488 has 22 MA's), (8, 88608), (12, 88656), (15, 88677), (17, 88689), (24, 88725), (26, 88734), (32, 88812), (35, 88851), (37, 88893), (40, 88935), (42, 88947),

Gene: Beuffert_157 Start: 86417, Stop: 86890, Start Num: 3

Candidate Starts for Beuffert_157:

(Start: 3 @86417 has 22 MA's), (12, 86585), (17, 86618), (26, 86663), (32, 86741), (35, 86780), (37, 86822),

Gene: BillNye_128 Start: 77977, Stop: 78453, Start Num: 3

Candidate Starts for BillNye_128:

(Start: 3 @77977 has 22 MA's), (7, 78088), (8, 78097), (9, 78106), (10, 78115), (16, 78175), (23, 78214), (26, 78226), (27, 78229), (35, 78343), (36, 78364), (39, 78418),

Gene: Blueeyedbeauty_160 Start: 86300, Stop: 86776, Start Num: 3

Candidate Starts for Blueeyedbeauty_160:

(1, 86249), (Start: 3 @86300 has 22 MA's), (12, 86468), (15, 86489), (17, 86501), (24, 86537), (26, 86546), (32, 86624), (35, 86663), (37, 86705), (41, 86753), (42, 86759),

Gene: Circinus_129 Start: 77945, Stop: 78421, Start Num: 3

Candidate Starts for Circinus_129:

(Start: 3 @77945 has 22 MA's), (7, 78056), (8, 78065), (9, 78074), (10, 78083), (23, 78182), (26, 78194), (27, 78197), (35, 78311), (36, 78332), (39, 78386),

Gene: Comrade_162 Start: 88690, Stop: 89166, Start Num: 3

Candidate Starts for Comrade_162:

(Start: 3 @88690 has 22 MA's), (8, 88810), (12, 88858), (15, 88879), (17, 88891), (24, 88927), (26, 88936), (32, 89014), (35, 89053), (37, 89095), (40, 89137), (42, 89149),

Gene: Emma1919_169 Start: 87379, Stop: 87867, Start Num: 3

Candidate Starts for Emma1919_169:

(Start: 3 @87379 has 22 MA's), (Start: 4 @87385 has 1 MA's), (8, 87499), (9, 87508), (26, 87637), (35, 87754), (37, 87796), (41, 87844), (42, 87850),

Gene: Faust_157 Start: 87675, Stop: 88151, Start Num: 2

Candidate Starts for Faust_157:

(Start: 2 @87675 has 3 MA's), (6, 87753), (11, 87822), (28, 87936), (35, 88041), (37, 88083),

Gene: Forrest_170 Start: 88362, Stop: 88847, Start Num: 3

Candidate Starts for Forrest_170:

(Start: 3 @88362 has 22 MA's), (8, 88482), (9, 88491), (26, 88620), (35, 88737), (36, 88758),

Gene: Francob_167 Start: 87884, Stop: 88372, Start Num: 3

Candidate Starts for Francob_167:

(Start: 3 @87884 has 22 MA's), (Start: 4 @87890 has 1 MA's), (8, 88004), (13, 88067), (19, 88097), (22, 88127), (24, 88133), (26, 88142), (31, 88211), (32, 88220), (34, 88241), (35, 88259), (37, 88301), (41, 88349), (42, 88355),

Gene: Gilson_168 Start: 87347, Stop: 87829, Start Num: 4

Candidate Starts for Gilson_168:

(Start: 3 @87341 has 22 MA's), (Start: 4 @87347 has 1 MA's), (8, 87461), (9, 87470), (26, 87599), (35, 87716), (37, 87758), (41, 87806), (42, 87812),

Gene: Jada_167 Start: 87058, Stop: 87543, Start Num: 3

Candidate Starts for Jada_167:

(Start: 3 @87058 has 22 MA's), (Start: 4 @87064 has 1 MA's), (8, 87178), (9, 87187), (26, 87316), (35, 87433), (36, 87454),

Gene: Karp_159 Start: 87914, Stop: 88390, Start Num: 3

Candidate Starts for Karp_159:

(Start: 3 @87914 has 22 MA's), (12, 88082), (15, 88103), (17, 88115), (24, 88151), (26, 88160), (32, 88238), (35, 88277), (37, 88319), (40, 88361), (42, 88373),

Gene: Kenrey_171 Start: 88511, Stop: 88984, Start Num: 3

Candidate Starts for Kenrey_171:

(Start: 3 @88511 has 22 MA's), (Start: 4 @88517 has 1 MA's), (15, 88700), (17, 88712), (18, 88715), (26, 88757), (31, 88826), (32, 88835), (35, 88874),

Gene: Limpid_159 Start: 87871, Stop: 88338, Start Num: 2

Candidate Starts for Limpid_159:

(Start: 2 @87871 has 3 MA's), (5, 87937), (26, 88108), (28, 88129), (29, 88138), (34, 88210), (35, 88228), (37, 88270),

Gene: MeganTheeKilla_166 Start: 86965, Stop: 87450, Start Num: 3

Candidate Starts for MeganTheeKilla_166:

(Start: 3 @86965 has 22 MA's), (8, 87085), (9, 87094), (26, 87223), (35, 87340), (37, 87382),

Gene: Moab_165 Start: 89688, Stop: 90161, Start Num: 3

Candidate Starts for Moab_165:

(Start: 3 @89688 has 22 MA's), (8, 89808), (15, 89877), (17, 89889), (26, 89934), (32, 90012), (35, 90051), (37, 90093),

Gene: Muntaha_136 Start: 76880, Stop: 77359, Start Num: 3

Candidate Starts for Muntaha_136:

(Start: 3 @76880 has 22 MA's), (14, 77069), (20, 77093), (24, 77117), (26, 77126), (31, 77201), (35, 77249), (36, 77270), (39, 77324),

Gene: Patelgo_167 Start: 90380, Stop: 90856, Start Num: 3

Candidate Starts for Patelgo_167:

(Start: 3 @90380 has 22 MA's), (8, 90500), (15, 90569), (17, 90581), (24, 90617), (26, 90626), (32, 90704), (33, 90719), (35, 90743), (37, 90785), (41, 90833), (42, 90839),

Gene: Phredrick_168 Start: 86854, Stop: 87339, Start Num: 3

Candidate Starts for Phredrick_168:

(Start: 3 @86854 has 22 MA's), (Start: 4 @86860 has 1 MA's), (8, 86974), (13, 87037), (17, 87058), (19, 87067), (26, 87112), (35, 87229), (37, 87271),

Gene: SeresaTree_159 Start: 87057, Stop: 87533, Start Num: 2

Candidate Starts for SeresaTree_159:

(Start: 2 @87057 has 3 MA's), (6, 87135), (11, 87204), (28, 87318), (35, 87423), (37, 87465),

Gene: Sham_158 Start: 88846, Stop: 89325, Start Num: 3

Candidate Starts for Sham_158:

(Start: 3 @88846 has 22 MA's), (18, 89053), (21, 89068), (26, 89095), (35, 89215), (37, 89257), (38, 89281),

Gene: SparkleGoddess_164 Start: 88701, Stop: 89177, Start Num: 3

Candidate Starts for SparkleGoddess_164:

(Start: 3 @88701 has 22 MA's), (8, 88821), (15, 88890), (17, 88902), (24, 88938), (26, 88947), (31, 89016), (32, 89025), (35, 89064), (37, 89106), (40, 89148), (42, 89160),

Gene: Stigma_163 Start: 89135, Stop: 89611, Start Num: 3

Candidate Starts for Stigma_163:

(Start: 3 @89135 has 22 MA's), (8, 89255), (12, 89303), (15, 89324), (17, 89336), (24, 89372), (26, 89381), (32, 89459), (35, 89498), (37, 89540), (40, 89582), (42, 89594),

Gene: TunaTartare_164 Start: 90092, Stop: 90559, Start Num: 3

Candidate Starts for TunaTartare_164:

(Start: 3 @90092 has 22 MA's), (5, 90158), (25, 90323), (26, 90329), (28, 90350), (30, 90395), (35, 90449), (37, 90491), (38, 90515),

Gene: Wakanda_135 Start: 76822, Stop: 77301, Start Num: 3

Candidate Starts for Wakanda_135:

(Start: 3 @76822 has 22 MA's), (14, 77011), (20, 77035), (24, 77059), (26, 77068), (31, 77143), (35, 77191), (36, 77212), (39, 77266),

Gene: Westy_166 Start: 89450, Stop: 89926, Start Num: 3

Candidate Starts for Westy_166:

(Start: 3 @89450 has 22 MA's), (8, 89570), (12, 89618), (15, 89639), (17, 89651), (24, 89687), (26, 89696), (32, 89774), (35, 89813), (37, 89855), (40, 89897), (42, 89909),