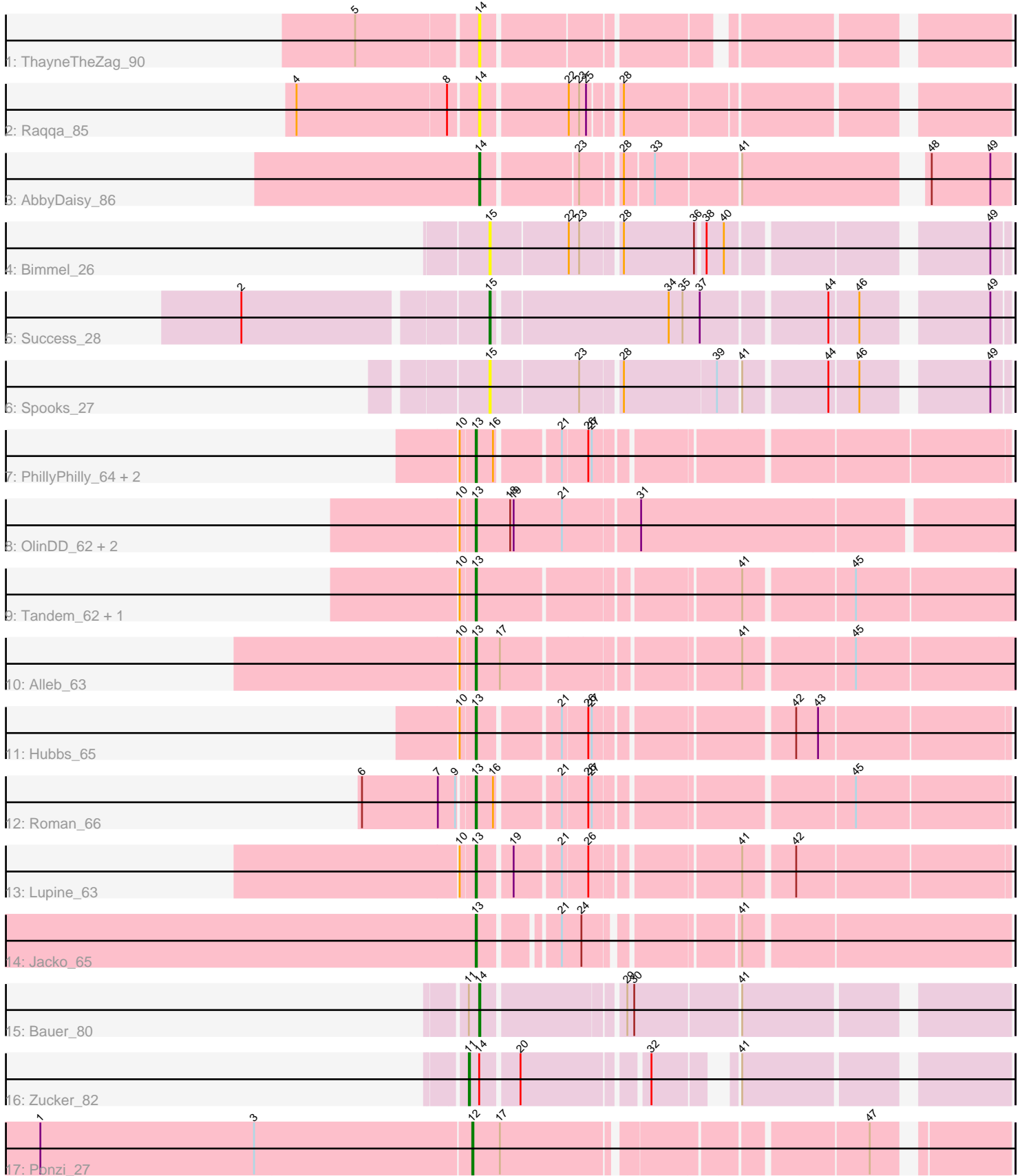


Pham 223424



Note: Tracks are now grouped by subcluster and scaled. Switching in subcluster is indicated by changes in track color. Track scale is now set by default to display the region 30 bp upstream of start 1 to 30 bp downstream of the last possible start. If this default region is judged to be packed too tightly with annotated starts, the track will be further scaled to only show that region of the ORF with annotated starts. This action will be indicated by adding "Zoomed" to the title. For starts, yellow indicates the location of called starts comprised solely of Glimmer/GeneMark auto-annotations, green indicates the location of called starts with at least 1 manual gene annotation.

Pham 223424 Report

This analysis was run 03/28/25 on database version 593.

Pham number 223424 has 22 members, 4 are drafts.

Phages represented in each track:

- Track 1 : ThayneTheZag_90
- Track 2 : Raqqa_85
- Track 3 : AbbyDaisy_86
- Track 4 : Bimmel_26
- Track 5 : Success_28
- Track 6 : Spooks_27
- Track 7 : PhillyPhilly_64, Pavlo_64, DejaVu_66
- Track 8 : OlinDD_62, Platte_62, Hortus1_62
- Track 9 : Tandem_62, Pioneer3_62
- Track 10 : Alleb_63
- Track 11 : Hubbs_65
- Track 12 : Roman_66
- Track 13 : Lupine_63
- Track 14 : Jacko_65
- Track 15 : Bauer_80
- Track 16 : Zucker_82
- Track 17 : Ponzi_27

Summary of Final Annotations (See graph section above for start numbers):

The start number called the most often in the published annotations is 13, it was called in 13 of the 18 non-draft genes in the pham.

Genes that call this "Most Annotated" start:

- Alleb_63, DejaVu_66, Hortus1_62, Hubbs_65, Jacko_65, Lupine_63, OlinDD_62, Pavlo_64, PhillyPhilly_64, Pioneer3_62, Platte_62, Roman_66, Tandem_62,

Genes that have the "Most Annotated" start but do not call it:

-

Genes that do not have the "Most Annotated" start:

- AbbyDaisy_86, Bauer_80, Bimmel_26, Ponzi_27, Raqqa_85, Spooks_27, Success_28, ThayneTheZag_90, Zucker_82,

Summary by start number:

Start 11:

- Found in 2 of 22 (9.1%) of genes in pham
- Manual Annotations of this start: 1 of 18
- Called 50.0% of time when present
- Phage (with cluster) where this start called: Zucker_82 (FN),

Start 12:

- Found in 1 of 22 (4.5%) of genes in pham
- Manual Annotations of this start: 1 of 18
- Called 100.0% of time when present
- Phage (with cluster) where this start called: Ponzi_27 (singleton),

Start 13:

- Found in 13 of 22 (59.1%) of genes in pham
- Manual Annotations of this start: 13 of 18
- Called 100.0% of time when present
- Phage (with cluster) where this start called: Alleb_63 (ED1), DejaVu_66 (ED1), Hortus1_62 (ED1), Hubbs_65 (ED1), Jacko_65 (ED1), Lupine_63 (ED1), OlinDD_62 (ED1), Pavlo_64 (ED1), PhillyPhilly_64 (ED1), Pioneer3_62 (ED1), Platte_62 (ED1), Roman_66 (ED1), Tandem_62 (ED1),

Start 14:

- Found in 5 of 22 (22.7%) of genes in pham
- Manual Annotations of this start: 2 of 18
- Called 80.0% of time when present
- Phage (with cluster) where this start called: AbbyDaisy_86 (AY), Bauer_80 (FN), Raqqa_85 (AY), ThayneTheZag_90 (AY),

Start 15:

- Found in 3 of 22 (13.6%) of genes in pham
- Manual Annotations of this start: 1 of 18
- Called 100.0% of time when present
- Phage (with cluster) where this start called: Bimmel_26 (BT), Spooks_27 (BT), Success_28 (BT),

Summary by clusters:

There are 5 clusters represented in this pham: AY, BT, singleton, ED1, FN,

Info for manual annotations of cluster AY:

- Start number 14 was manually annotated 1 time for cluster AY.

Info for manual annotations of cluster BT:

- Start number 15 was manually annotated 1 time for cluster BT.

Info for manual annotations of cluster ED1:

- Start number 13 was manually annotated 13 times for cluster ED1.

Info for manual annotations of cluster FN:

- Start number 11 was manually annotated 1 time for cluster FN.
- Start number 14 was manually annotated 1 time for cluster FN.

Gene Information:

Gene: AbbyDaisy_86 Start: 49683, Stop: 50093, Start Num: 14

Candidate Starts for AbbyDaisy_86:

(Start: 14 @49683 has 2 MA's), (23, 49761), (28, 49791), (33, 49815), (41, 49884), (48, 50025), (49, 50076),

Gene: Alleb_63 Start: 38335, Stop: 37907, Start Num: 13

Candidate Starts for Alleb_63:

(10, 38347), (Start: 13 @38335 has 13 MA's), (17, 38314), (41, 38128), (45, 38041),

Gene: Bauer_80 Start: 44429, Stop: 44842, Start Num: 14

Candidate Starts for Bauer_80:

(Start: 11 @44420 has 1 MA's), (Start: 14 @44429 has 2 MA's), (29, 44540), (30, 44546), (41, 44633),

Gene: Bimmel_26 Start: 18034, Stop: 17636, Start Num: 15

Candidate Starts for Bimmel_26:

(Start: 15 @18034 has 1 MA's), (22, 17968), (23, 17959), (28, 17929), (36, 17869), (38, 17863), (40, 17848), (49, 17650),

Gene: DejaVu_66 Start: 38300, Stop: 37887, Start Num: 13

Candidate Starts for DejaVu_66:

(10, 38312), (Start: 13 @38300 has 13 MA's), (16, 38285), (21, 38237), (26, 38216), (27, 38213),

Gene: Hortus1_62 Start: 38511, Stop: 38062, Start Num: 13

Candidate Starts for Hortus1_62:

(10, 38523), (Start: 13 @38511 has 13 MA's), (18, 38481), (19, 38478), (21, 38436), (31, 38373),

Gene: Hubbs_65 Start: 38508, Stop: 38095, Start Num: 13

Candidate Starts for Hubbs_65:

(10, 38520), (Start: 13 @38508 has 13 MA's), (21, 38445), (26, 38424), (27, 38421), (42, 38271), (43, 38253),

Gene: Jacko_65 Start: 37248, Stop: 36841, Start Num: 13

Candidate Starts for Jacko_65:

(Start: 13 @37248 has 13 MA's), (21, 37191), (24, 37176), (41, 37062),

Gene: Lupine_63 Start: 37714, Stop: 37301, Start Num: 13

Candidate Starts for Lupine_63:

(10, 37726), (Start: 13 @37714 has 13 MA's), (19, 37687), (21, 37651), (26, 37630), (41, 37516), (42, 37477),

Gene: OlinDD_62 Start: 38510, Stop: 38061, Start Num: 13

Candidate Starts for OlinDD_62:

(10, 38522), (Start: 13 @38510 has 13 MA's), (18, 38480), (19, 38477), (21, 38435), (31, 38372),

Gene: Pavlo_64 Start: 38359, Stop: 37946, Start Num: 13

Candidate Starts for Pavlo_64:

(10, 38371), (Start: 13 @38359 has 13 MA's), (16, 38344), (21, 38296), (26, 38275), (27, 38272),

Gene: PhillyPhilly_64 Start: 37893, Stop: 37480, Start Num: 13
Candidate Starts for PhillyPhilly_64:
(10, 37905), (Start: 13 @37893 has 13 MA's), (16, 37878), (21, 37830), (26, 37809), (27, 37806),

Gene: Pioneer3_62 Start: 38332, Stop: 37904, Start Num: 13
Candidate Starts for Pioneer3_62:
(10, 38344), (Start: 13 @38332 has 13 MA's), (41, 38125), (45, 38038),

Gene: Platte_62 Start: 38303, Stop: 37854, Start Num: 13
Candidate Starts for Platte_62:
(10, 38315), (Start: 13 @38303 has 13 MA's), (18, 38273), (19, 38270), (21, 38228), (31, 38165),

Gene: Ponzi_27 Start: 16304, Stop: 15894, Start Num: 12
Candidate Starts for Ponzi_27:
(1, 16676), (3, 16490), (Start: 12 @16304 has 1 MA's), (17, 16280), (47, 15995),

Gene: Raqqa_85 Start: 47700, Stop: 48110, Start Num: 14
Candidate Starts for Raqqa_85:
(4, 47547), (8, 47676), (Start: 14 @47700 has 2 MA's), (22, 47772), (23, 47781), (25, 47787), (28, 47808),

Gene: Roman_66 Start: 38562, Stop: 38149, Start Num: 13
Candidate Starts for Roman_66:
(6, 38655), (7, 38589), (9, 38574), (Start: 13 @38562 has 13 MA's), (16, 38547), (21, 38499), (26, 38478), (27, 38475), (45, 38277),

Gene: Spooks_27 Start: 19049, Stop: 18648, Start Num: 15
Candidate Starts for Spooks_27:
(Start: 15 @19049 has 1 MA's), (23, 18974), (28, 18944), (39, 18866), (41, 18848), (44, 18782), (46, 18758), (49, 18662),

Gene: Success_28 Start: 18270, Stop: 17863, Start Num: 15
Candidate Starts for Success_28:
(2, 18471), (Start: 15 @18270 has 1 MA's), (34, 18123), (35, 18111), (37, 18096), (44, 17997), (46, 17973), (49, 17877),

Gene: Tandem_62 Start: 38430, Stop: 38002, Start Num: 13
Candidate Starts for Tandem_62:
(10, 38442), (Start: 13 @38430 has 13 MA's), (41, 38223), (45, 38136),

Gene: ThayneTheZag_90 Start: 48316, Stop: 48714, Start Num: 14
Candidate Starts for ThayneTheZag_90:
(5, 48217), (Start: 14 @48316 has 2 MA's),

Gene: Zucker_82 Start: 48335, Stop: 48733, Start Num: 11
Candidate Starts for Zucker_82:
(Start: 11 @48335 has 1 MA's), (Start: 14 @48344 has 2 MA's), (20, 48374), (32, 48473), (41, 48524),