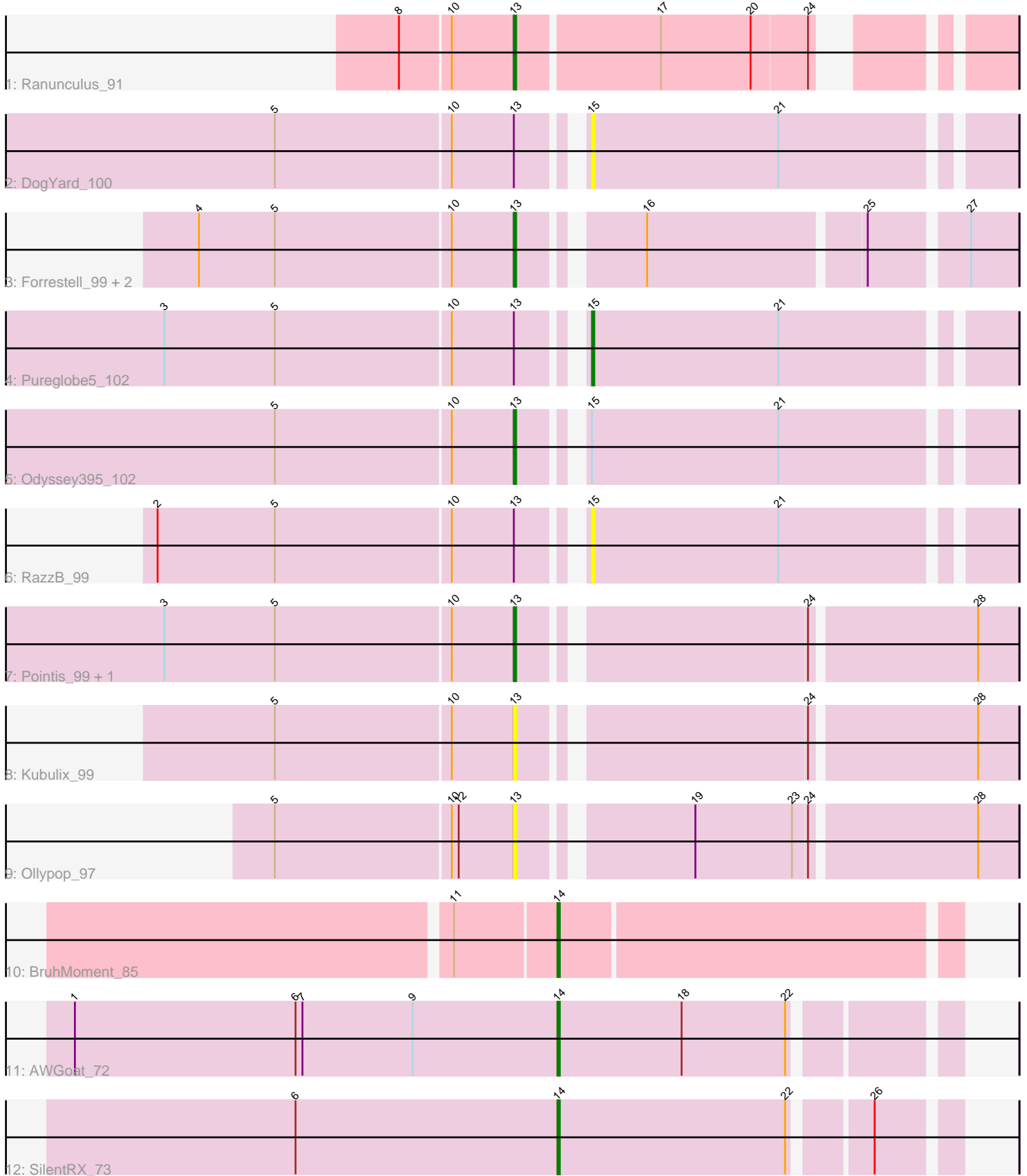


Pham 223515



Note: Tracks are now grouped by subcluster and scaled. Switching in subcluster is indicated by changes in track color. Track scale is now set by default to display the region 30 bp upstream of start 1 to 30 bp downstream of the last possible start. If this default region is judged to be packed too tightly with annotated starts, the track will be further scaled to only show that region of the ORF with annotated starts. This action will be indicated by adding "Zoomed" to the title. For starts, yellow indicates the location of called starts comprised solely of Glimmer/GeneMark auto-annotations, green indicates the location of called starts with at least 1 manual gene annotation.

## Pham 223515 Report

This analysis was run 03/28/25 on database version 593.

Pham number 223515 has 15 members, 6 are drafts.

Phages represented in each track:

- Track 1 : Ranunculus\_91
- Track 2 : DogYard\_100
- Track 3 : Forrestell\_99, MellowYellow\_103, NyleyClemson\_103
- Track 4 : Pureglobe5\_102
- Track 5 : Odyssey395\_102
- Track 6 : RazzB\_99
- Track 7 : Pointis\_99, Beagle\_104
- Track 8 : Kubulix\_99
- Track 9 : Ollypop\_97
- Track 10 : BruhMoment\_85
- Track 11 : AWGoat\_72
- Track 12 : SilentRX\_73

### ***Summary of Final Annotations (See graph section above for start numbers):***

The start number called the most often in the published annotations is 13, it was called in 5 of the 9 non-draft genes in the pham.

Genes that call this "Most Annotated" start:

- Beagle\_104, Forrestell\_99, Kubulix\_99, MellowYellow\_103, NyleyClemson\_103, Odyssey395\_102, Ollypop\_97, Pointis\_99, Ranunculus\_91,

Genes that have the "Most Annotated" start but do not call it:

- DogYard\_100, Pureglobe5\_102, RazzB\_99,

Genes that do not have the "Most Annotated" start:

- AWGoat\_72, BruhMoment\_85, SilentRX\_73,

### **Summary by start number:**

Start 13:

- Found in 12 of 15 ( 80.0% ) of genes in pham
- Manual Annotations of this start: 5 of 9
- Called 75.0% of time when present

- Phage (with cluster) where this start called: Beagle\_104 (AP2), Forrestell\_99 (AP2), Kubulix\_99 (AP2), MellowYellow\_103 (AP2), NyleyClemson\_103 (AP2), Odyssey395\_102 (AP2), Ollypop\_97 (AP2), Pointis\_99 (AP2), Ranunculus\_91 (AP),

Start 14:

- Found in 3 of 15 ( 20.0% ) of genes in pham
- Manual Annotations of this start: 3 of 9
- Called 100.0% of time when present
- Phage (with cluster) where this start called: AWGoat\_72 (AP4), BruhMoment\_85 (AP3), SilentRX\_73 (AP4),

Start 15:

- Found in 4 of 15 ( 26.7% ) of genes in pham
- Manual Annotations of this start: 1 of 9
- Called 75.0% of time when present
- Phage (with cluster) where this start called: DogYard\_100 (AP2), Pureglobe5\_102 (AP2), RazzB\_99 (AP2),

### **Summary by clusters:**

There are 4 clusters represented in this pham: AP2, AP, AP4, AP3,

Info for manual annotations of cluster AP:

- Start number 13 was manually annotated 1 time for cluster AP.

Info for manual annotations of cluster AP2:

- Start number 13 was manually annotated 4 times for cluster AP2.
- Start number 15 was manually annotated 1 time for cluster AP2.

Info for manual annotations of cluster AP3:

- Start number 14 was manually annotated 1 time for cluster AP3.

Info for manual annotations of cluster AP4:

- Start number 14 was manually annotated 2 times for cluster AP4.

### **Gene Information:**

Gene: AWGoat\_72 Start: 50701, Stop: 50540, Start Num: 14

Candidate Starts for AWGoat\_72:

(1, 50911), (6, 50815), (7, 50812), (9, 50764), (Start: 14 @50701 has 3 MA's), (18, 50647), (22, 50602),

Gene: Beagle\_104 Start: 61388, Stop: 61188, Start Num: 13

Candidate Starts for Beagle\_104:

(3, 61538), (5, 61490), (10, 61415), (Start: 13 @61388 has 5 MA's), (24, 61274), (28, 61205),

Gene: BruhMoment\_85 Start: 55806, Stop: 55639, Start Num: 14

Candidate Starts for BruhMoment\_85:

(11, 55845), (Start: 14 @55806 has 3 MA's),

Gene: DogYard\_100 Start: 61069, Stop: 60896, Start Num: 15

Candidate Starts for DogYard\_100:

(5, 61192), (10, 61117), (Start: 13 @61090 has 5 MA's), (Start: 15 @61069 has 1 MA's), (21, 60988),

Gene: Forrestell\_99 Start: 59805, Stop: 59611, Start Num: 13

Candidate Starts for Forrestell\_99:

(4, 59940), (5, 59907), (10, 59832), (Start: 13 @59805 has 5 MA's), (16, 59760), (25, 59670), (27, 59631),

Gene: Kubulix\_99 Start: 60763, Stop: 60563, Start Num: 13

Candidate Starts for Kubulix\_99:

(5, 60865), (10, 60790), (Start: 13 @60763 has 5 MA's), (24, 60649), (28, 60580),

Gene: MellowYellow\_103 Start: 61007, Stop: 60813, Start Num: 13

Candidate Starts for MellowYellow\_103:

(4, 61142), (5, 61109), (10, 61034), (Start: 13 @61007 has 5 MA's), (16, 60962), (25, 60872), (27, 60833),

Gene: NyleyClemson\_103 Start: 60637, Stop: 60443, Start Num: 13

Candidate Starts for NyleyClemson\_103:

(4, 60772), (5, 60739), (10, 60664), (Start: 13 @60637 has 5 MA's), (16, 60592), (25, 60502), (27, 60463),

Gene: Odyssey395\_102 Start: 60780, Stop: 60586, Start Num: 13

Candidate Starts for Odyssey395\_102:

(5, 60882), (10, 60807), (Start: 13 @60780 has 5 MA's), (Start: 15 @60759 has 1 MA's), (21, 60678),

Gene: Ollypop\_97 Start: 62150, Stop: 61950, Start Num: 13

Candidate Starts for Ollypop\_97:

(5, 62252), (10, 62177), (12, 62174), (Start: 13 @62150 has 5 MA's), (19, 62084), (23, 62042), (24, 62036), (28, 61967),

Gene: Pointis\_99 Start: 60679, Stop: 60479, Start Num: 13

Candidate Starts for Pointis\_99:

(3, 60829), (5, 60781), (10, 60706), (Start: 13 @60679 has 5 MA's), (24, 60565), (28, 60496),

Gene: Pureglobe5\_102 Start: 61317, Stop: 61144, Start Num: 15

Candidate Starts for Pureglobe5\_102:

(3, 61488), (5, 61440), (10, 61365), (Start: 13 @61338 has 5 MA's), (Start: 15 @61317 has 1 MA's), (21, 61236),

Gene: Ranunculus\_91 Start: 61637, Stop: 61452, Start Num: 13

Candidate Starts for Ranunculus\_91:

(8, 61685), (10, 61664), (Start: 13 @61637 has 5 MA's), (17, 61577), (20, 61538), (24, 61514),

Gene: RazzB\_99 Start: 60192, Stop: 60019, Start Num: 15

Candidate Starts for RazzB\_99:

(2, 60366), (5, 60315), (10, 60240), (Start: 13 @60213 has 5 MA's), (Start: 15 @60192 has 1 MA's), (21, 60111),

Gene: SilentRX\_73 Start: 51541, Stop: 51380, Start Num: 14

Candidate Starts for SilentRX\_73:

(6, 51655), (Start: 14 @51541 has 3 MA's), (22, 51442), (26, 51412),