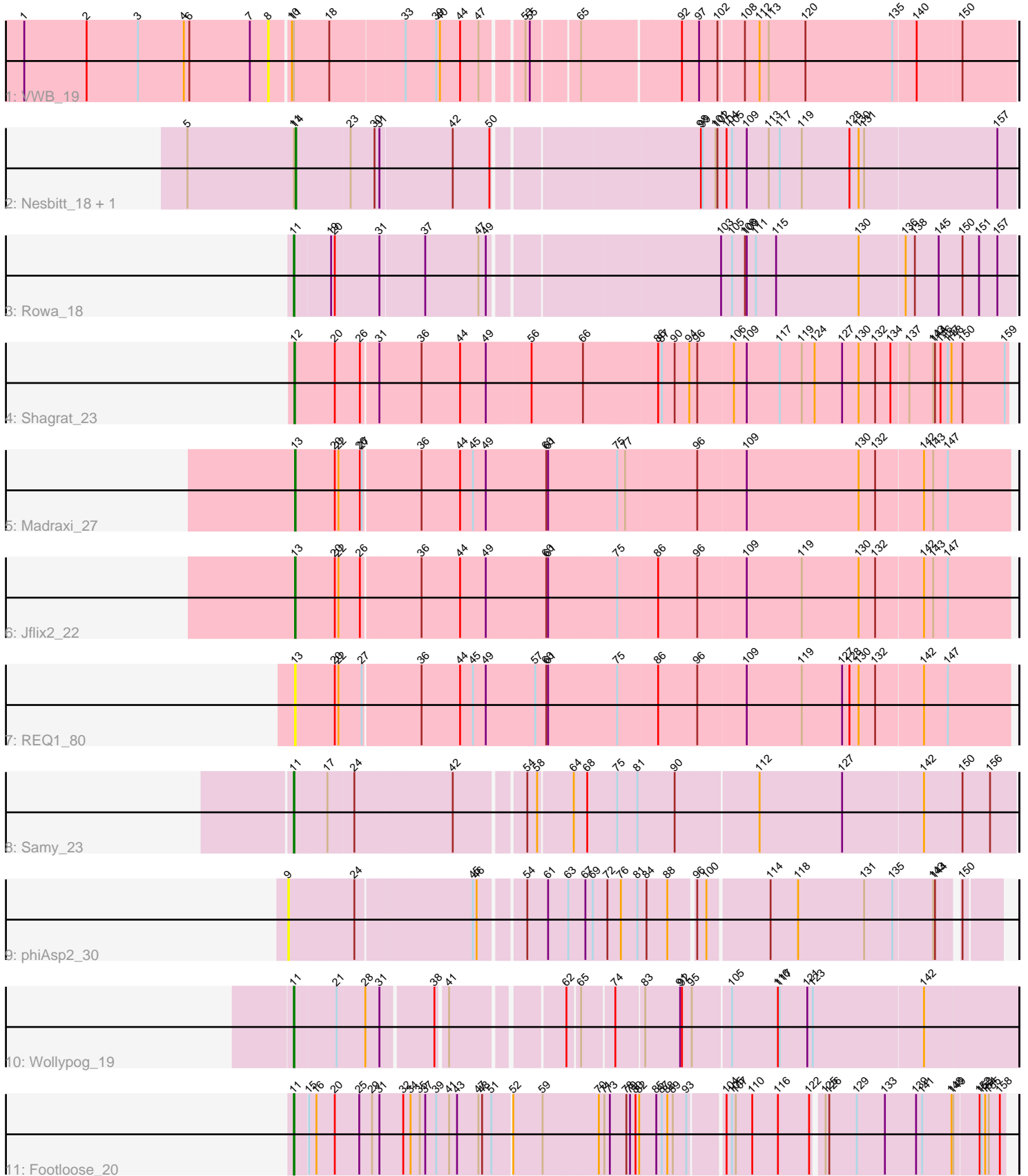


# Pham 223583



Note: Tracks are now grouped by subcluster and scaled. Switching in subcluster is indicated by changes in track color. Track scale is now set by default to display the region 30 bp upstream of start 1 to 30 bp downstream of the last possible start. If this default region is judged to be packed too tightly with annotated starts, the track will be further scaled to only show that region of the ORF with annotated starts. This action will be indicated by adding "Zoomed" to the title. For starts, yellow indicates the location of called starts comprised solely of Glimmer/GeneMark auto-annotations, green indicates the location of called starts with at least 1 manual gene annotation.

## Pham 223583 Report

This analysis was run 03/28/25 on database version 593.

Pham number 223583 has 12 members, 3 are drafts.

Phages represented in each track:

- Track 1 : VWB\_19
- Track 2 : Nesbitt\_18, AbbeyMikolon\_18
- Track 3 : Rowa\_18
- Track 4 : Shagrat\_23
- Track 5 : Madraxi\_27
- Track 6 : Jflix2\_22
- Track 7 : REQ1\_80
- Track 8 : Samy\_23
- Track 9 : phiAsp2\_30
- Track 10 : Wollypog\_19
- Track 11 : Footloose\_20

### ***Summary of Final Annotations (See graph section above for start numbers):***

The start number called the most often in the published annotations is 11, it was called in 4 of the 9 non-draft genes in the pham.

Genes that call this "Most Annotated" start:

- Footloose\_20, Rowa\_18, Samy\_23, Wollypog\_19,

Genes that have the "Most Annotated" start but do not call it:

- AbbeyMikolon\_18, Nesbitt\_18, VWB\_19,

Genes that do not have the "Most Annotated" start:

- Jflix2\_22, Madraxi\_27, REQ1\_80, Shagrat\_23, phiAsp2\_30,

### **Summary by start number:**

Start 8:

- Found in 1 of 12 ( 8.3% ) of genes in pham
- No Manual Annotations of this start.
- Called 100.0% of time when present
- Phage (with cluster) where this start called: VWB\_19 (BA),

Start 9:

- Found in 1 of 12 ( 8.3% ) of genes in pham
- No Manual Annotations of this start.
- Called 100.0% of time when present
- Phage (with cluster) where this start called: phiAsp2\_30 (singleton),

Start 11:

- Found in 7 of 12 ( 58.3% ) of genes in pham
- Manual Annotations of this start: 4 of 9
- Called 57.1% of time when present
- Phage (with cluster) where this start called: Footloose\_20 (singleton), Rowa\_18 (BL), Samy\_23 (singleton), Wollypog\_19 (singleton),

Start 12:

- Found in 1 of 12 ( 8.3% ) of genes in pham
- Manual Annotations of this start: 1 of 9
- Called 100.0% of time when present
- Phage (with cluster) where this start called: Shagrat\_23 (CF),

Start 13:

- Found in 3 of 12 ( 25.0% ) of genes in pham
- Manual Annotations of this start: 2 of 9
- Called 100.0% of time when present
- Phage (with cluster) where this start called: Jflix2\_22 (CF), Madraxi\_27 (CF), REQ1\_80 (CF),

Start 14:

- Found in 2 of 12 ( 16.7% ) of genes in pham
- Manual Annotations of this start: 2 of 9
- Called 100.0% of time when present
- Phage (with cluster) where this start called: AbbeyMikolon\_18 (BL), Nesbitt\_18 (BL),

**Summary by clusters:**

There are 4 clusters represented in this pham: BL, singleton, CF, BA,

Info for manual annotations of cluster BL:

- Start number 11 was manually annotated 1 time for cluster BL.
- Start number 14 was manually annotated 2 times for cluster BL.

Info for manual annotations of cluster CF:

- Start number 12 was manually annotated 1 time for cluster CF.
- Start number 13 was manually annotated 2 times for cluster CF.

**Gene Information:**

Gene: AbbeyMikolon\_18 Start: 15163, Stop: 16281, Start Num: 14

Candidate Starts for AbbeyMikolon\_18:

(5, 14986), (Start: 11 @15160 has 4 MA's), (Start: 14 @15163 has 2 MA's), (23, 15247), (30, 15286), (31, 15292), (42, 15403), (50, 15463), (98, 15775), (99, 15778), (101, 15799), (102, 15802), (104,

15814), (105, 15823), (109, 15847), (113, 15883), (117, 15901), (119, 15937), (128, 16015), (130, 16030), (131, 16039), (157, 16252),

Gene: Footloose\_20 Start: 13870, Stop: 14982, Start Num: 11

Candidate Starts for Footloose\_20:

(Start: 11 @13870 has 4 MA's), (15, 13891), (16, 13903), (20, 13933), (25, 13972), (29, 13993), (31, 14005), (32, 14044), (34, 14056), (35, 14071), (37, 14080), (39, 14098), (41, 14119), (43, 14131), (47, 14164), (48, 14170), (51, 14185), (52, 14215), (59, 14263), (70, 14353), (71, 14362), (73, 14371), (78, 14398), (79, 14404), (80, 14413), (82, 14419), (85, 14446), (87, 14455), (88, 14464), (89, 14473), (93, 14494), (104, 14545), (105, 14554), (107, 14560), (110, 14587), (116, 14629), (122, 14680), (125, 14695), (126, 14701), (129, 14746), (133, 14791), (139, 14842), (141, 14851), (148, 14899), (149, 14902), (152, 14941), (153, 14944), (154, 14950), (155, 14956), (158, 14974),

Gene: Jflix2\_22 Start: 23249, Stop: 24382, Start Num: 13

Candidate Starts for Jflix2\_22:

(Start: 13 @23249 has 2 MA's), (20, 23312), (22, 23318), (26, 23351), (36, 23441), (44, 23504), (49, 23546), (60, 23642), (61, 23645), (75, 23756), (86, 23816), (96, 23879), (109, 23957), (119, 24047), (130, 24140), (132, 24167), (142, 24242), (143, 24257), (147, 24281),

Gene: Madraxi\_27 Start: 25619, Stop: 26752, Start Num: 13

Candidate Starts for Madraxi\_27:

(Start: 13 @25619 has 2 MA's), (20, 25682), (22, 25688), (26, 25721), (27, 25724), (36, 25811), (44, 25874), (45, 25895), (49, 25916), (60, 26012), (61, 26015), (75, 26126), (77, 26138), (96, 26249), (109, 26327), (130, 26510), (132, 26537), (142, 26612), (143, 26627), (147, 26651),

Gene: Nesbitt\_18 Start: 15235, Stop: 16353, Start Num: 14

Candidate Starts for Nesbitt\_18:

(5, 15058), (Start: 11 @15232 has 4 MA's), (Start: 14 @15235 has 2 MA's), (23, 15319), (30, 15358), (31, 15364), (42, 15475), (50, 15535), (98, 15847), (99, 15850), (101, 15871), (102, 15874), (104, 15886), (105, 15895), (109, 15919), (113, 15955), (117, 15973), (119, 16009), (128, 16087), (130, 16102), (131, 16111), (157, 16324),

Gene: REQ1\_80 Start: 46988, Stop: 48121, Start Num: 13

Candidate Starts for REQ1\_80:

(Start: 13 @46988 has 2 MA's), (20, 47051), (22, 47057), (27, 47093), (36, 47180), (44, 47243), (45, 47264), (49, 47285), (57, 47363), (60, 47381), (61, 47384), (75, 47495), (86, 47555), (96, 47618), (109, 47696), (119, 47786), (127, 47852), (128, 47864), (130, 47879), (132, 47906), (142, 47981), (147, 48020),

Gene: Rowa\_18 Start: 15046, Stop: 16164, Start Num: 11

Candidate Starts for Rowa\_18:

(Start: 11 @15046 has 4 MA's), (19, 15103), (20, 15109), (31, 15175), (37, 15241), (47, 15328), (49, 15340), (103, 15691), (105, 15709), (108, 15730), (109, 15733), (111, 15748), (115, 15781), (130, 15916), (136, 15988), (138, 16003), (145, 16042), (150, 16081), (151, 16108), (157, 16138),

Gene: Samy\_23 Start: 18462, Stop: 19574, Start Num: 11

Candidate Starts for Samy\_23:

(Start: 11 @18462 has 4 MA's), (17, 18513), (24, 18552), (42, 18702), (54, 18807), (58, 18822), (64, 18876), (68, 18897), (75, 18945), (81, 18978), (90, 19038), (112, 19170), (127, 19305), (142, 19434), (150, 19491), (156, 19536),

Gene: Shagrat\_23 Start: 22765, Stop: 23892, Start Num: 12

Candidate Starts for Shagrat\_23:

(Start: 12 @22765 has 1 MA's), (20, 22828), (26, 22867), (31, 22891), (36, 22957), (44, 23020), (49, 23062), (56, 23131), (66, 23215), (86, 23329), (87, 23335), (90, 23356), (94, 23380), (96, 23392), (106, 23449), (109, 23470), (117, 23524), (119, 23560), (124, 23581), (127, 23626), (130, 23653), (132, 23680), (134, 23704), (137, 23731), (143, 23770), (144, 23773), (146, 23782), (147, 23794), (148, 23800), (150, 23818), (159, 23887),

Gene: VWB\_19 Start: 16658, Stop: 17779, Start Num: 8

Candidate Starts for VWB\_19:

(1, 16259), (2, 16361), (3, 16445), (4, 16520), (6, 16529), (7, 16628), (8, 16658), (10, 16688), (Start: 11 @16691 has 4 MA's), (18, 16745), (33, 16853), (39, 16901), (40, 16907), (44, 16940), (47, 16967), (53, 17027), (55, 17033), (65, 17105), (92, 17258), (97, 17285), (102, 17315), (108, 17354), (112, 17378), (113, 17393), (120, 17453), (135, 17594), (140, 17630), (150, 17696),

Gene: Wollypog\_19 Start: 17989, Stop: 19074, Start Num: 11

Candidate Starts for Wollypog\_19:

(Start: 11 @17989 has 4 MA's), (21, 18055), (28, 18097), (31, 18118), (38, 18193), (41, 18208), (62, 18373), (65, 18391), (74, 18439), (83, 18481), (91, 18538), (92, 18541), (95, 18556), (105, 18616), (116, 18691), (117, 18694), (121, 18736), (123, 18745), (142, 18922),

Gene: phiAsp2\_30 Start: 25990, Stop: 27063, Start Num: 9

Candidate Starts for phiAsp2\_30:

(9, 25990), (24, 26092), (45, 26269), (46, 26275), (54, 26341), (61, 26374), (63, 26407), (67, 26434), (69, 26446), (72, 26467), (76, 26488), (81, 26515), (84, 26530), (88, 26563), (96, 26602), (100, 26617), (114, 26713), (118, 26758), (131, 26866), (135, 26911), (143, 26974), (144, 26977), (150, 27004),