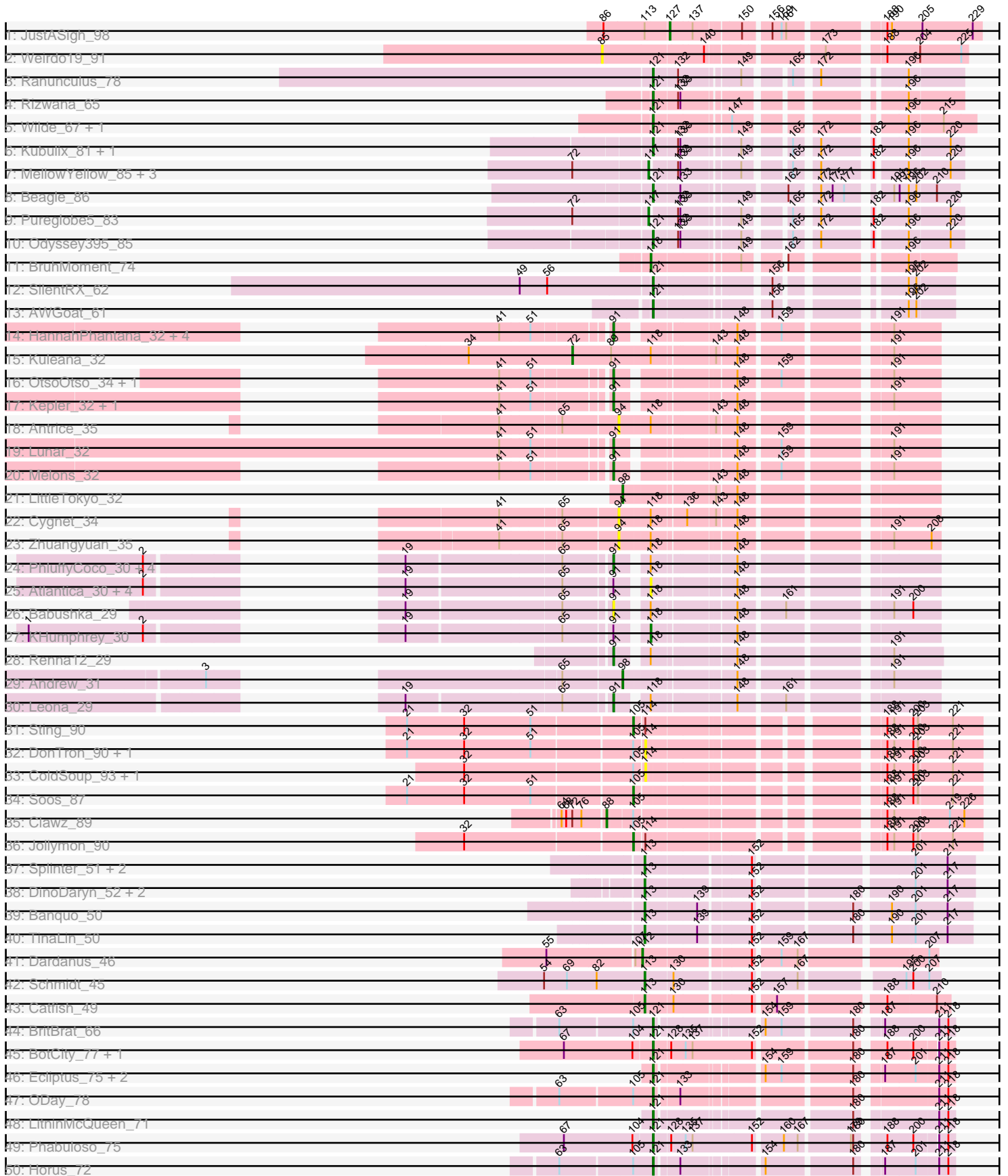
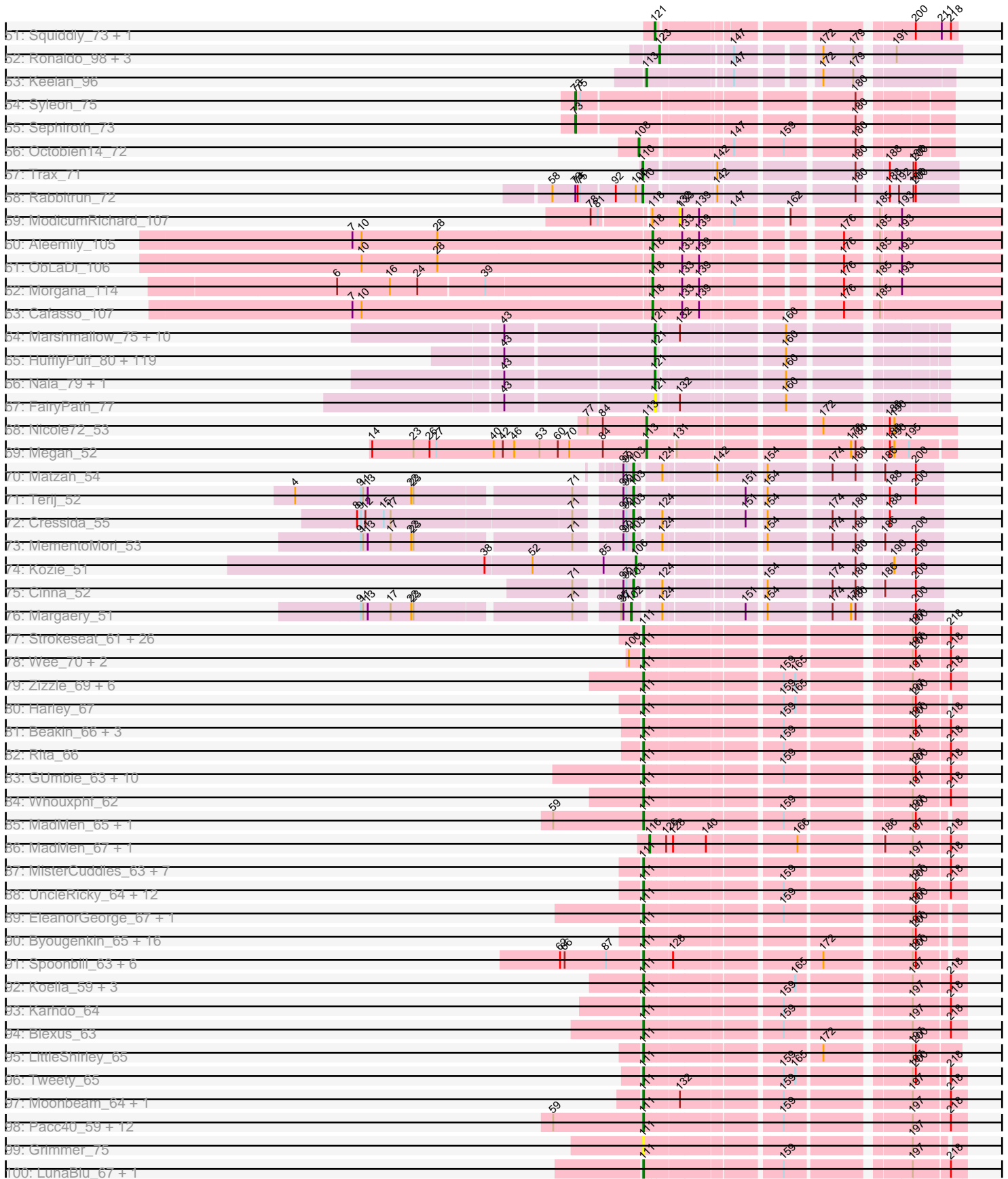


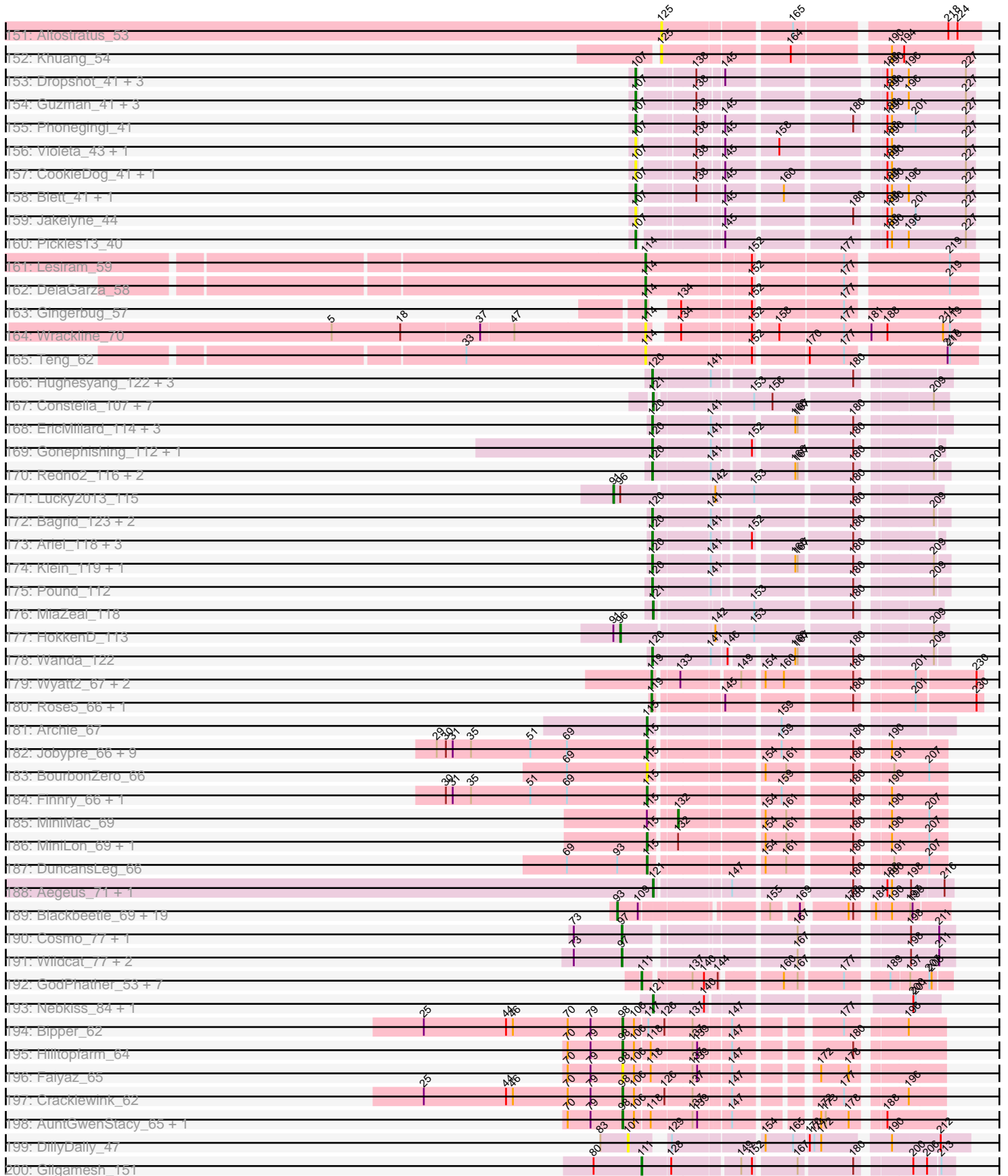
Pham 224141



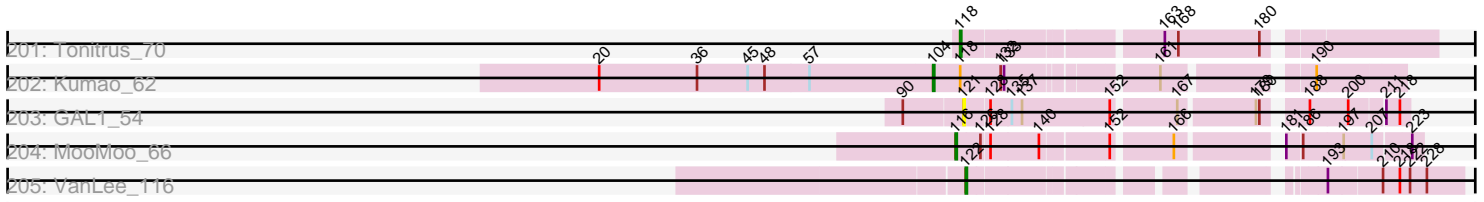
Pham 224141



Pham 224141



Pham 224141



Note: Tracks are now grouped by subcluster and scaled. Switching in subcluster is indicated by changes in track color. Track scale is now set by default to display the region 30 bp upstream of start 1 to 30 bp downstream of the last possible start. If this default region is judged to be packed too tightly with annotated starts, the track will be further scaled to only show that region of the ORF with annotated starts. This action will be indicated by adding "Zoomed" to the title. For starts, yellow indicates the location of called starts comprised solely of Glimmer/GeneMark auto-annotations, green indicates the location of called starts with at least 1 manual gene annotation.

Pham 224141 Report

This analysis was run 03/28/25 on database version 593.

Pham number 224141 has 597 members, 72 are drafts.

Phages represented in each track:

- Track 1 : JustASigh_98
- Track 2 : Weirdo19_91
- Track 3 : Ranunculus_78
- Track 4 : Rizwana_65
- Track 5 : Wilde_67, Tank_65
- Track 6 : Kubulix_81, Pointis_81
- Track 7 : MellowYellow_85, RazzB_81, Forrestell_81, NyleyClemson_84
- Track 8 : Beagle_86
- Track 9 : Pureglobe5_83
- Track 10 : Odyssey395_85
- Track 11 : BruhMoment_74
- Track 12 : SilentRX_62
- Track 13 : AWGoat_61
- Track 14 : HannahPhantana_32, Bedetta_34, Amelia_32, Cote_33, Coral_31
- Track 15 : Kuleana_32
- Track 16 : OtsoOtso_34, Polka_31
- Track 17 : Kepler_32, Daob_33
- Track 18 : Antrice_35
- Track 19 : Lunar_32
- Track 20 : Melons_32
- Track 21 : LittleTokyo_32
- Track 22 : Cygnet_34
- Track 23 : Zhuangyuan_35
- Track 24 : PhluffyCoco_30, RedFox_30, Juno112_29, Glotell_32, AmiCi24_29
- Track 25 : Atlantica_30, HamCheese_29, DanHam62_30, Camara_30, Rattail_30
- Track 26 : Babushka_29
- Track 27 : KHumphrey_30
- Track 28 : Renna12_29
- Track 29 : Andrew_31
- Track 30 : Leona_29
- Track 31 : Sting_90
- Track 32 : DonTron_90, KingstonB_93
- Track 33 : ColdSoup_93, Amo99_93
- Track 34 : Soos_87
- Track 35 : Clawz_89
- Track 36 : Jollymon_90
- Track 37 : Splinter_51, Vendetta_51, Goib_52

- Track 38 : DinoDaryn_52, TZGordon_53, Huffy_52
- Track 39 : Banquo_50
- Track 40 : TinaLin_50
- Track 41 : Dardanus_46
- Track 42 : Schmidt_45
- Track 43 : Catfish_49
- Track 44 : BritBrat_66
- Track 45 : BotCity_77, BearBQ_70
- Track 46 : Ecliptus_75, CheeseTouch_74, Kuwabara_72
- Track 47 : ODay_78
- Track 48 : LitninMcQueen_71
- Track 49 : Phabuloso_75
- Track 50 : Horus_72
- Track 51 : Squiddly_73, Spooky_68
- Track 52 : Ronaldo_98, Guey18_100, Volt_99, Fryberger_95
- Track 53 : Keelan_96
- Track 54 : Syleon_75
- Track 55 : Sephiroth_73
- Track 56 : Octobien14_72
- Track 57 : Trax_71
- Track 58 : Rabbitrun_72
- Track 59 : ModicumRichard_107
- Track 60 : Aleemily_105
- Track 61 : ObLaDi_106
- Track 62 : Morgana_114
- Track 63 : Cafasso_107
- Track 64 : Marshmallow_75, Cookies_74, ChotaBhai_77, SirDuracell_76, Bask21_77, YassJohnny_74, Pat3_75, Tomaszewski_72, DoctorDiddles_76, OrionPax_76, Amao_77
- Track 65 : HufflyPuff_80, Teaspoon_78, Moldemort_80, Buck_78, Petra64142_81, NoSleep_78, Highbury_76, Glexan_76, TeardropMSU_73, Lilizi_78, Thresher_79, Inca_74, Kimchi_81, 244_78, MISSy_78, Nimrod_78, Stank_80, Gage_79, Phaja_75, Becksu_76, Bruin_74, BilboSwaggins_76, StellaBean_75, Bench_80, AmericanBeauty_81, Myrale_77, Manda_78, Ukulele_72, Rimmer_78, Kostya_77, SophKB_74, FoghornLeghorn_71, HanKaySha_77, Pumpkin_80, Stark_78, IHOP_75, Icee_78, Sassay_72, MPhalcon_78, Balomoji_77, Dusk_74, Kanye_74, Saints25_76, Cactus_80, JeTaime_77, Simpliphy_76, GooberAzure_80, PhatBacter_81, Palpatine_79, xkcd_80, Lilpickle_76, Holt_82, Murica_80, Rakim_78, Adnama_81, Gemini_82, MadamMonkfish_77, Mindy_76, Mosby_73, Dumbo_77, Lilac_79, Phaux_79, NelitzaMV_75, BadStone_74, Eureka_75, TBrady12_80, BigBubba_77, Flypotenuse_73, Argent26_81, CrystalP_76, Phrux_74, BugsBunny_77, Cjw1_77, Hoonter_80, Willez_72, BaboJay_74, Goku_75, Asriel_76, Henry_75, Barbarian_76, Hopey_77, Xandras_76, Tuco_78, Contagion_73, Qualification_78, Goldilocks_80, StolenFromERC_80, GoldenSpark_81, Traaww1_73, Daikon_79, Easy2Say_78, Filch_78, ShamWow_77, Porky_76, Czyszczon1_78, RiverMonster_77, Sotrice96_78, Harella_77, Elph10_77, Policronamos_80, Youngblood_80, Toto_75, Murphy_77, Pharsalus_74, Command613_79, Gator_75, StormChicken_79, Miniwave_72, Elite2014_76, Misfit_78, Maxxinista_79, ChosenOne_77, Emmina_77, Tarkin_76, ABCat_74, Terminus_80, Wiggin_79, DrDrey_77, Paperbeatsrock_76, Thimble_79
- Track 66 : Nala_79, FireRed_81
- Track 67 : FairyPath_77
- Track 68 : Nicole72_53

- Track 69 : Megan_52
- Track 70 : Matzah_54
- Track 71 : Terij_52
- Track 72 : Cressida_55
- Track 73 : MementoMori_53
- Track 74 : Kozie_51
- Track 75 : Cinna_52
- Track 76 : Margaery_51
- Track 77 : Strokeseat_61, Plumbus_68, Spartacus_67, Filuzino_63, StAnnes_63, Hlubikazi_61, Ovechkin_65, DotProduct_60, Donkeykong_68, Girafales_73, Florinda_76, Phanphagia_61, DLane_60, Ms6_62, IrishSherpFalk_66, PopTart_59, Shauna1_63, Rialto_70, Melissauen88_63, Seagreen_64, SassyB_59, WillSterrel_66, Phalconet_63, Flathead_66, Quico_73, Chevrolet_70, Mandlovu_61
- Track 78 : Wee_70, DeadP_72, Taj_70
- Track 79 : Zizzle_69, Maravista_67, ByChance_58, Pippy_64, ShowerHandel_68, Crumble_60, BobaPhett_69
- Track 80 : Harley_67
- Track 81 : Beakin_66, Guppsters_66, Hades_66, Soul22_71
- Track 82 : Rita_66
- Track 83 : GUmbie_63, James_69, BuzzLyseyear_71, Tchotchke_64, Mattes_69, Saal_67, Che8_70, OlympiaSaint_67, Lizziana_71, Eradicator_58, Gorge_69
- Track 84 : Whouxphf_62
- Track 85 : MadMen_65, Martik_65
- Track 86 : MadMen_67, Leozinho_66
- Track 87 : MisterCuddles_63, XFactor_63, Zerg_65, Alexphander_69, Doug_67, Girr_63, RockyHorror_66, Ruby_61
- Track 88 : UncleRicky_64, ArcusAngelus_67, Lorde_65, Phatniss_63, Eish_68, Drago_62, Totinger_65, Enby_66, DosHalletts_67, DirtMcgirt_64, Mova_69, Lij_61, Radiance_64
- Track 89 : EleanorGeorge_67, Leozinho_64
- Track 90 : Byougenkin_65, Rockne_66, Kimberlium_70, QuickMath_69, Hamulus_65, Chuckly_68, MulchExplorer_73, Juice456_66, JalFarm20_78, Jant_69, PMC_62, Boomer_70, SiSi_63, Ardmore_57, KristaRAM_68, Starcevich_65, Avani_73
- Track 91 : Spoonbill_63, Polka14_64, JoeyJr_61, PHappiness_61, Leperchaun_58, RitaG_61, Daenerys_60
- Track 92 : Koella_59, Priscilla_65, NormanBulbieJr_65, Cabrinians_66
- Track 93 : Karhdo_64
- Track 94 : Blexus_63
- Track 95 : LittleShirley_65
- Track 96 : Tweety_65
- Track 97 : Moonbeam_64, Emma_67
- Track 98 : Pacc40_59, LastJedi_59, CaptainTrips_63, MinionDave_64, Nivrat_62, Minnie_68, LilMoolah_64, Clifton_60, Brocalys_60, Aubs_65, Burwell21_63, SwagPigglett_70, Sandalphon_66
- Track 99 : Grimmer_75
- Track 100 : LunaBlu_67, Galactic_64
- Track 101 : Madiba_66, Ramsey_64, DaWorst_65
- Track 102 : Mutaforma13_71
- Track 103 : Kingsley_63, Coco12_65, Sarma624_64, Cerasum_62, Brookers_63, Velveteen_61, BigPhil_62
- Track 104 : Whatsapiecost_65

- Track 105 : BodEinwohner17_66, Geralt_60, Empress_64, Nimbo_59, IbOuu_67, Deb65_60, Scottish_64, OldBen_63
- Track 106 : Marker_67
- Track 107 : Ochi17_69, Modragons_69, OfUltron_71, Llama_70, Jinglebell_71, AlpineSix_71, Seabastian_71
- Track 108 : Nitzel_62
- Track 109 : BlueCrab_66, FreddyB_66
- Track 110 : VRedHorse_65
- Track 111 : Dante_66
- Track 112 : Bobi_69, Batiatus_63, MilleniumForce_68, Ibhubesi_65, Brushbloom_72
- Track 113 : Vivum_68
- Track 114 : Firehouse51_68
- Track 115 : Fancypants_68, Mozy_75
- Track 116 : OwlsT2W_65
- Track 117 : Estave1_70
- Track 118 : Sassafras_64, RedBird_64, KingMidas_65, Dorothy_64
- Track 119 : Kenuha5_63, SuperGrey_69
- Track 120 : Stap_63
- Track 121 : Juniper1_65
- Track 122 : Yorick_64
- Track 123 : Fastidio_66
- Track 124 : Hegedechwinu_65, Gandalph_68
- Track 125 : Pollywog_66
- Track 126 : Inventum_61
- Track 127 : PhesterPhotato_65
- Track 128 : Krakatau_62
- Track 129 : DillTech15_63
- Track 130 : GigiOuiOui_61
- Track 131 : Spikelee_72
- Track 132 : Violac_67
- Track 133 : Wachhund_66
- Track 134 : TDanisky_72
- Track 135 : DRBy19_69, Philus_69
- Track 136 : SG4_62, Mahavrat_62
- Track 137 : Royals2015_68
- Track 138 : Zapner_79, Jabbawokkie_80, Blarby_78, Mantra_62
- Track 139 : Yoshi_81
- Track 140 : Che9d_75, ShiLan_64, Kersh_67
- Track 141 : SilverChicken_75, Cornucopia_67, Veteran_62
- Track 142 : Demsculpinboyz_78
- Track 143 : Squirty_67
- Track 144 : TChen_67, LunaStella_65
- Track 145 : ThetaBob_73, Ogopogo_71
- Track 146 : Renaud18_75
- Track 147 : Cornie_63, Bipolar_65
- Track 148 : Hum25_55
- Track 149 : MrSmee_53, Skitty_53
- Track 150 : Pitbull_53
- Track 151 : Altostratus_53
- Track 152 : Khuang_54
- Track 153 : Dropshot_41, Warren_41, Antuna_42, MenE_42
- Track 154 : Guzman_41, Appa_41, PhillyJawn_42, Losacky_44
- Track 155 : Phonegingi_41

- Track 156 : Violeta_43, Carrillo_43
- Track 157 : CookieDog_41, Phingu_44
- Track 158 : Blett_41, Bush_42
- Track 159 : Jakelyne_44
- Track 160 : Pickles13_40
- Track 161 : Lesiram_59
- Track 162 : DelaGarza_58
- Track 163 : Gingerbug_57
- Track 164 : Wrackline_70
- Track 165 : Teng_62
- Track 166 : Hughesyang_122, Zelink_117, Minerva_120, ThreeRngTarjay_118
- Track 167 : Constella_107, JuicyJay_120, Thibault_106, Phoebus_124, Beem_125, Dallas_124, NihilNomen_125, Dove_109
- Track 168 : EricMillard_114, Duke13_117, Optimus_113, BAKA_122
- Track 169 : Gonephishing_112, LittleE_122
- Track 170 : Redno2_116, Halley_125, Ejimix_117
- Track 171 : Lucky2013_115
- Track 172 : Bagrid_123, Kalah2_114, DmpstrDiver_123
- Track 173 : Ariel_118, Squint_116, Courthouse_113, Superphikiman_115
- Track 174 : Klein_119, Bobby_115
- Track 175 : Pound_112
- Track 176 : MiaZeal_118
- Track 177 : HokkenD_113
- Track 178 : Wanda_122
- Track 179 : Wyatt2_67, AvadaKedavra_66, Tyson_67
- Track 180 : Rose5_66, Wamburgxpress_66
- Track 181 : Archie_67
- Track 182 : Jobypre_66, MsGreen_66, Snenia_65, Jubie_65, TriFive_66, Lumos_67, Krypton555_67, Clautastrophe_65, Whirlwind_66, Red305_66
- Track 183 : BourbonZero_66
- Track 184 : Finnry_66, Samty_66
- Track 185 : MiniMac_69
- Track 186 : MiniLon_69, Lolly9_65
- Track 187 : DuncansLeg_66
- Track 188 : Aegeus_71, Baudelaire_71
- Track 189 : Blackbeetle_69, Pringar_68, VasuNzinga_68, MosMoris_66, Clarkson_70, Tesla_66, JoieB_70, FeliMaine_71, Poise_69, Gattaca_67, Raela_69, Beelzebub_73, Caprice_64, Lilbit_69, LittleLaf_69, Corazon_67, RedRaider77_68, GoongGoong_66, Marvin_65, Huphlepuuff_71
- Track 190 : Cosmo_77, Azrael100_76
- Track 191 : Wildcat_77, MaryV_77, EniyanLRS_168
- Track 192 : GodPhather_53, PR_52, Megabear_52, Jeon_52, Cepens_52, D12_51, Argie_53, Taptic_52
- Track 193 : Nebkiss_84, Gaia_85
- Track 194 : Bipper_62
- Track 195 : Hilltopfarm_64
- Track 196 : Faiyaz_65
- Track 197 : Cracklewink_62
- Track 198 : AuntGwenStacy_65, Typha_64
- Track 199 : DillyDally_47
- Track 200 : Gilgamesh_151
- Track 201 : Tonitrus_70
- Track 202 : Kumao_62

- Track 203 : GAL1_54
- Track 204 : MooMoo_66
- Track 205 : VanLee_116

Summary of Final Annotations (See graph section above for start numbers):

The start number called the most often in the published annotations is 111, it was called in 216 of the 525 non-draft genes in the pham.

Genes that call this "Most Annotated" start:

- Alexphander_69, AlpineSix_71, ArcusAngelus_67, Ardmore_57, Argie_53, Aubs_65, Avani_73, Batiatus_63, Beakin_66, BigPhil_62, Bipolar_65, Blarby_78, Blexus_63, BlueCrab_66, BobaPhett_69, Bobi_69, BodEinwohner17_66, Boomer_70, Brocalys_60, Brookers_63, Brushbloom_72, Burwell21_63, BuzzLyseyear_71, ByChance_58, Byougenkin_65, Cabrinians_66, CaptainTrips_63, Cepens_52, Cerasum_62, Che8_70, Che9d_75, Chevrolet_70, Chuckly_68, Clifton_60, Coco12_65, Cornie_63, Cornucopia_67, Crumble_60, D12_51, DLane_60, DRBy19_69, DaWorst_65, Daenerys_60, Dante_66, DeadP_72, Deb65_60, Demsculpinboyz_78, DillTech15_63, DirtMcgirt_64, Donkeykong_68, Dorothy_64, DosHalletts_67, DotProduct_60, Doug_67, Drago_62, Eish_68, EleanorGeorge_67, Emma_67, Empress_64, Enby_66, Eradicator_58, Estave1_70, Fancypants_68, Fastidio_66, Filuzino_63, Firehouse51_68, Flathead_66, Florinda_76, FreddyB_66, GUmbie_63, Galactic_64, Gandalph_68, Geralt_60, GigiOuiOui_61, Gilgamesh_151, Girafales_73, Girr_63, GodPhather_53, Gorge_69, Grimmer_75, Guppsters_66, Hades_66, Hamulus_65, Harley_67, Hegedechwinu_65, Hlubikazi_61, IbOuu_67, Ibhubesi_65, IrishSherpFalk_66, Jabbawokkie_80, JalFarm20_78, James_69, Jant_69, Jeon_52, Jinglebell_71, JoeyJr_61, Juice456_66, Juniper1_65, Karhdo_64, Kenuha5_63, Kersh_67, Kimberlium_70, KingMidas_65, Kingsley_63, Koella_59, Krakatau_62, KristaRAM_68, LastJedi_59, Leozinho_64, Leperchaun_58, LilMoolah_64, LittleShirley_65, Lizziana_71, Llama_70, Llij_61, Lorde_65, LunaBlu_67, LunaStella_65, MadMen_65, Madiba_66, Mahavrat_62, Mandlovu_61, Mantra_62, Maravista_67, Marker_67, Martik_65, Mattes_69, Megabear_52, Melissauren88_63, MilleniumForce_68, MinionDave_64, Minnie_68, MisterCuddles_63, Modragons_69, Moonbeam_64, Mova_69, Mozy_75, Ms6_62, MulchExplorer_73, Mutaforma13_71, Nimbo_59, Nitzel_62, Nivrat_62, NormanBulbieJr_65, Ochi17_69, OfUltron_71, Ogotogo_71, OldBen_63, OlympiaSaint_67, Ovechkin_65, OwlsT2W_65, PHappiness_61, PMC_62, PR_52, Pacc40_59, Phalconet_63, Phanphagia_61, Phatniss_63, PhesterPotato_65, Philus_69, Pippy_64, Plumbus_68, Polka14_64, Pollywog_66, PopTart_59, Priscilla_65, QuickMath_69, Quico_73, Radiance_64, Ramsey_64, RedBird_64, Renaud18_75, Rialto_70, RitaG_61, Rita_66, Rockne_66, RockyHorror_66, Royals2015_68, Ruby_61, SG4_62, Saal_67, Sandalphon_66, Sarma624_64, Sassafras_64, SassyB_59, Scottish_64, Seabastian_71, Seagreen_64, Shauna1_63, ShiLan_64, ShowerHandel_68, SiSi_63, SilverChicken_75, Soul22_71, Spartacus_67, Spikelee_72, Spoonbill_63, Squirty_67, StAnnes_63, Stap_63, Starcevich_65, Strokeseat_61, SuperGrey_69, SwagPiggett_70, TChen_67, TDanisky_72, Taj_70, Taptic_52, Tchotchke_64, ThetaBob_73, Totinger_65, Tweety_65, UncleRicky_64, VRedHorse_65, Velveteen_61, Veteran_62, Violac_67, Vivum_68, Wachhund_66, Wee_70, Whatsapiecost_65, Whouxphf_62, WillSterrel_66, XFactor_63, Yorick_64, Yoshi_81, Zapner_79, Zerg_65, Zizzle_69,

Genes that have the "Most Annotated" start but do not call it:

- Inventum_61,

Genes that do not have the "Most Annotated" start:

- 244_78, ABCat_74, AWGoat_61, Adnama_81, Aegeus_71, Aleemily_105, Altostratus_53, Amao_77, Amelia_32, AmericanBeauty_81, AmiCi24_29, Amo99_93, Andrew_31, Antrice_35, Antuna_42, Appa_41, Archie_67, Argent26_81, Ariel_118, Asriel_76, Atlantica_30, AuntGwenStacy_65, AvadaKedavra_66, Azrael100_76, BAKA_122, BaboJay_74, Babushka_29, BadStone_74, Bagrid_123, Balomoji_77, Banquo_50, Barbarian_76, Bask21_77, Baudelaire_71, Beagle_86, BearBQ_70, Becksu_76, Bedetta_34, Beelzebub_73, Beem_125, Bench_80, BigBubba_77, BilboSwaggins_76, Bipper_62, Blackbeetle_69, Blett_41, Bobby_115, BotCity_77, BourbonZero_66, BritBrat_66, BruhMoment_74, Bruin_74, Buck_78, BugsBunny_77, Bush_42, Cactus_80, Cafasso_107, Camara_30, Caprice_64, Carrillo_43, Catfish_49, CheeseTouch_74, ChosenOne_77, ChotaBhai_77, Cinna_52, Cjw1_77, Clarkson_70, Clautastrophe_65, Clawz_89, ColdSoup_93, Command613_79, Constella_107, Contagion_73, CookieDog_41, Cookies_74, Coral_31, Corazon_67, Cosmo_77, Cote_33, Courthouse_113, Cracklewink_62, Cressida_55, CrystalP_76, Cygnet_34, Czyszczo1_78, Daikon_79, Dallas_124, DanHam62_30, Daob_33, Dardanus_46, DelaGarza_58, DillyDally_47, DinoDaryn_52, DmpstrDiver_123, DoctorDiddles_76, DonTron_90, Dove_109, DrDrey_77, Dropshot_41, Duke13_117, Dumbo_77, DuncansLeg_66, Dusk_74, Easy2Say_78, Ecliptus_75, Ejimix_117, Elite2014_76, Elph10_77, Emmina_77, EniyanLRS_168, EricMillard_114, Eureka_75, FairyPath_77, Faiyaz_65, FeliMaine_71, Filch_78, Finnry_66, FireRed_81, Flypotenuse_73, FoghornLeghorn_71, Forrestell_81, Fryberger_95, GAL1_54, Gage_79, Gaia_85, Gator_75, Gattaca_67, Gemini_82, Gingerbug_57, Glexan_76, Glotell_32, Goib_52, Goku_75, GoldenSpark_81, Goldilocks_80, Gonephishing_112, GooberAzure_80, GoongGoong_66, Guey18_100, Guzman_41, Halley_125, HamCheese_29, HankKaySha_77, HannahPhantana_32, Harella_77, Henry_75, Highbury_76, Hilltopfarm_64, HokkenD_113, Holt_82, Hoonter_80, Hopey_77, Horus_72, HufflyPuff_80, Huffy_52, Hughesyang_122, Hum25_55, Huphlepuuff_71, IHOP_75, Icee_78, Inca_74, Jakelyne_44, JeTaime_77, Jobypre_66, JoieB_70, Jollymon_90, Jubie_65, JuicyJay_120, Juno112_29, JustASigh_98, KHumphrey_30, Kalah2_114, Kanye_74, Keelan_96, Kepler_32, Khuang_54, Kimchi_81, KingstonB_93, Klein_119, Kostya_77, Kozie_51, Krypton555_67, Kubulix_81, Kuleana_32, Kumao_62, Kuwabara_72, Leona_29, Leozinho_66, Lesiram_59, Lilac_79, Lilbit_69, Lilizi_78, Lilpickle_76, LitninMcQueen_71, LittleE_122, LittleLaf_69, LittleTokyo_32, Lolly9_65, Losacky_44, Lucky2013_115, Lumos_67, Lunar_32, MISSy_78, MPhalcon_78, MadMen_67, MadamMonkfish_77, Manda_78, Margaery_51, Marshmallow_75, Marvin_65, MaryV_77, Matzah_54, Maxxinista_79, Megan_52, MellowYellow_85, Melons_32, MementoMori_53, MenE_42, MiaZeal_118, Mindy_76, Minerva_120, MiniLon_69, MiniMac_69, Miniwave_72, Misfit_78, ModicumRichard_107, Moldemort_80, MooMoo_66, Morgana_114, MosMoris_66, Mosby_73, MrSmee_53, MsGreen_66, Murica_80, Murphy_77, Myrale_77, Nala_79, Nebkiss_84, NelitzaMV_75, Nicole72_53, NihilNomen_125, Nimrod_78, NoSleep_78, NyleyClemson_84, ODay_78, ObLaDi_106, Octobien14_72, Odyssey395_85, Optimus_113, OrionPax_76, OtsoOtso_34, Palpatine_79, Paperbeatsrock_76, Pat3_75, Petra64142_81, Phabuloso_75, Phaja_75, Pharsalus_74, PhatBacter_81, Phaux_79, PhillyJawn_42, Phingu_44, PhluffyCoco_30, Phoebus_124, Phonegingi_41, Phrux_74, Pickles13_40, Pitbull_53, Pointis_81, Poise_69, Policronamos_80, Polka_31, Porky_76, Pound_112, Pringar_68, Pumpkin_80, Pureglobe5_83, Quallification_78, Rabbitrun_72, Raela_69,

Rakim_78, Ranunculus_78, Rattail_30, RazzB_81, Red305_66, RedFox_30, RedRaider77_68, Redno2_116, Renna12_29, Rimmer_78, RiverMonster_77, Rizwana_65, Ronaldo_98, Rose5_66, Saints25_76, Samty_66, Sassay_72, Schmidt_45, Sephiroth_73, ShamWow_77, SilentRX_62, Simpliphy_76, SirDuracell_76, Skitty_53, Snenia_65, Soos_87, SophKB_74, Sotrice96_78, Splinter_51, Spooky_68, Squiddly_73, Squint_116, Stank_80, Stark_78, StellaBean_75, Sting_90, StolenFromERC_80, StormChicken_79, Superphikiman_115, Syleon_75, TBrady12_80, TZGordon_53, Tank_65, Tarkin_76, TeardropMSU_73, Teaspoon_78, Teng_62, Terij_52, Terminus_80, Tesla_66, Thibault_106, Thimble_79, ThreeRngTarjay_118, Thresher_79, TinaLin_50, Tomaszewski_72, Tonitrus_70, Toto_75, Traaww1_73, Trax_71, TriFive_66, Tuco_78, Typha_64, Tyson_67, Ukulele_72, VanLee_116, VasuNzinga_68, Vendetta_51, Violeta_43, Volt_99, Wamburggrxpress_66, Wanda_122, Warren_41, Weirdo19_91, Whirlwind_66, Wiggin_79, Wildcat_77, Wilde_67, Willez_72, Wrackline_70, Wyatt2_67, Xandras_76, YassJohnny_74, Youngblood_80, Zelink_117, Zhuangyuan_35, xkcd_80,

Summary by start number:

Start 72:

- Found in 7 of 597 (1.2%) of genes in pham
- Manual Annotations of this start: 1 of 525
- Called 14.3% of time when present
- Phage (with cluster) where this start called: Kuleana_32 (AS2),

Start 73:

- Found in 8 of 597 (1.3%) of genes in pham
- Manual Annotations of this start: 2 of 525
- Called 25.0% of time when present
- Phage (with cluster) where this start called: Sephiroth_73 (DU1), Syleon_75 (DU1),

Start 85:

- Found in 2 of 597 (0.3%) of genes in pham
- No Manual Annotations of this start.
- Called 50.0% of time when present
- Phage (with cluster) where this start called: Weirdo19_91 (AH),

Start 88:

- Found in 1 of 597 (0.2%) of genes in pham
- Manual Annotations of this start: 1 of 525
- Called 100.0% of time when present
- Phage (with cluster) where this start called: Clawz_89 (CP),

Start 91:

- Found in 27 of 597 (4.5%) of genes in pham
- Manual Annotations of this start: 15 of 525
- Called 74.1% of time when present
- Phage (with cluster) where this start called: Amelia_32 (AS2), AmiCi24_29 (AS3), Babushka_29 (AS3), Bedetta_34 (AS2), Coral_31 (AS2), Cote_33 (AS2), Daob_33 (AS2), Glotell_32 (AS3), HannahPhantana_32 (AS2), Juno112_29 (AS3), Kepler_32 (AS2), Leona_29 (AS3), Lucky2013_115 (J), Lunar_32 (AS2), Melons_32 (AS2), OtsoOtso_34 (AS2), PhluffyCoco_30 (AS3), Polka_31 (AS2), RedFox_30 (AS3), Renna12_29 (AS3),

Start 93:

- Found in 21 of 597 (3.5%) of genes in pham
- Manual Annotations of this start: 17 of 525
- Called 95.2% of time when present
- Phage (with cluster) where this start called: Beelzebub_73 (S), Blackbeetle_69 (S), Caprice_64 (S), Clarkson_70 (S), Corazon_67 (S), FeliMaine_71 (S), Gattaca_67 (S), GoongGoong_66 (S), Huphlepuuff_71 (S), JoieB_70 (S), Lilbit_69 (S), LittleLaf_69 (S), Marvin_65 (S), MosMoris_66 (S), Poise_69 (S), Pringar_68 (S), Raela_69 (S), RedRaider77_68 (S), Tesla_66 (S), VasuNzinga_68 (S),

Start 94:

- Found in 3 of 597 (0.5%) of genes in pham
- No Manual Annotations of this start.
- Called 100.0% of time when present
- Phage (with cluster) where this start called: Antrice_35 (AS2), Cygnet_34 (AS2), Zhuangyuan_35 (AS2),

Start 96:

- Found in 2 of 597 (0.3%) of genes in pham
- Manual Annotations of this start: 1 of 525
- Called 50.0% of time when present
- Phage (with cluster) where this start called: HokkenD_113 (J),

Start 97:

- Found in 11 of 597 (1.8%) of genes in pham
- Manual Annotations of this start: 5 of 525
- Called 45.5% of time when present
- Phage (with cluster) where this start called: Azrael100_76 (V), Cosmo_77 (V), EniyanLRS_168 (V), MaryV_77 (V), Wildcat_77 (V),

Start 98:

- Found in 8 of 597 (1.3%) of genes in pham
- Manual Annotations of this start: 6 of 525
- Called 100.0% of time when present
- Phage (with cluster) where this start called: Andrew_31 (AS3), AuntGwenStacy_65 (Y), Bipper_62 (Y), Cracklewink_62 (Y), Faiyaz_65 (Y), Hilltopfarm_64 (Y), LittleTokyo_32 (AS2), Typha_64 (Y),

Start 101:

- Found in 1 of 597 (0.2%) of genes in pham
- No Manual Annotations of this start.
- Called 100.0% of time when present
- Phage (with cluster) where this start called: DillyDally_47 (singleton),

Start 102:

- Found in 2 of 597 (0.3%) of genes in pham
- Manual Annotations of this start: 1 of 525
- Called 50.0% of time when present
- Phage (with cluster) where this start called: Margaery_51 (EI),

Start 103:

- Found in 5 of 597 (0.8%) of genes in pham

- Manual Annotations of this start: 5 of 525
- Called 100.0% of time when present
- Phage (with cluster) where this start called: Cinna_52 (EI), Cressida_55 (EI), Matzah_54 (EI), MementoMori_53 (EI), Terij_52 (EI),

Start 104:

- Found in 4 of 597 (0.7%) of genes in pham
- Manual Annotations of this start: 1 of 525
- Called 25.0% of time when present
- Phage (with cluster) where this start called: Kumao_62 (singleton),

Start 105:

- Found in 11 of 597 (1.8%) of genes in pham
- Manual Annotations of this start: 3 of 525
- Called 27.3% of time when present
- Phage (with cluster) where this start called: Jollymon_90 (CP), Soos_87 (CP), Sting_90 (CP),

Start 106:

- Found in 8 of 597 (1.3%) of genes in pham
- Manual Annotations of this start: 1 of 525
- Called 12.5% of time when present
- Phage (with cluster) where this start called: Kozie_51 (EI),

Start 107:

- Found in 18 of 597 (3.0%) of genes in pham
- Manual Annotations of this start: 9 of 525
- Called 94.4% of time when present
- Phage (with cluster) where this start called: Antuna_42 (GA), Appa_41 (GA), Blett_41 (GA), Bush_42 (GA), Carrillo_43 (GA), CookieDog_41 (GA), Dropshot_41 (GA), Guzman_41 (GA), Jakelyne_44 (GA), Losacky_44 (GA), MenE_42 (GA), PhillyJawn_42 (GA), Phingu_44 (GA), Phoningingi_41 (GA), Pickles13_40 (GA), Violeta_43 (GA), Warren_41 (GA),

Start 108:

- Found in 1 of 597 (0.2%) of genes in pham
- Manual Annotations of this start: 1 of 525
- Called 100.0% of time when present
- Phage (with cluster) where this start called: Octobien14_72 (DU1),

Start 110:

- Found in 2 of 597 (0.3%) of genes in pham
- Manual Annotations of this start: 2 of 525
- Called 100.0% of time when present
- Phage (with cluster) where this start called: Rabbitrun_72 (DU2), Trax_71 (DU2),

Start 111:

- Found in 230 of 597 (38.5%) of genes in pham
- Manual Annotations of this start: 216 of 525
- Called 99.6% of time when present
- Phage (with cluster) where this start called: Alexphander_69 (F1), AlpineSix_71 (F1), ArcusAngelus_67 (F1), Ardmore_57 (F1), Argie_53 (W), Aubs_65 (F1), Avani_73 (F2), Batiatus_63 (F1), Beakin_66 (F1), BigPhil_62 (F1), Bipolar_65 (F1), Blarby_78

(F), Blexus_63 (F1), BlueCrab_66 (F1), BobaPhett_69 (F1), Bobi_69 (F1), BodEinwohner17_66 (F1), Boomer_70 (F1), Brocalys_60 (F1), Brookers_63 (F1), Brushbloom_72 (F1), Burwell21_63 (F1), BuzzLyseyear_71 (F1), ByChance_58 (F1), Byougenkin_65 (F1), Cabrinians_66 (F1), CaptainTrips_63 (F1), Cepens_52 (W), Cerasum_62 (F1), Che8_70 (F1), Che9d_75 (F2), Chevrolet_70 (F1), Chuckly_68 (F1), Clifton_60 (F1), Coco12_65 (F1), Cornie_63 (F5), Cornucopia_67 (F1), Crumble_60 (F1), D12_51 (W), DLane_60 (F1), DRBy19_69 (F1), DaWorst_65 (F1), Daenerys_60 (F1), Dante_66 (F1), DeadP_72 (F1), Deb65_60 (F1), Demsculpinboyz_78 (F2), DillTech15_63 (F1), DirtMcgirt_64 (F1), Donkeykong_68 (F1), Dorothy_64 (F1), DosHalletts_67 (F1), DotProduct_60 (F1), Doug_67 (F1), Drago_62 (F1), Eish_68 (F1), EleanorGeorge_67 (F1), Emma_67 (F1), Empress_64 (F1), Enby_66 (F1), Eradicator_58 (F1), Estave1_70 (F1), Fancypants_68 (F1), Fastidio_66 (F1), Filuzino_63 (F1), Firehouse51_68 (F1), Flathead_66 (F1), Florinda_76 (F1), FreddyB_66 (F1), GUmbie_63 (F1), Galactic_64 (F1), Gandolph_68 (F1), Geralt_60 (F1), GigiOuiOui_61 (F1), Gilgamesh_151 (singleton), Girafales_73 (F1), Girr_63 (F1), GodPhather_53 (W), Gorge_69 (F1), Grimmer_75 (F1), Guppsters_66 (F1), Hades_66 (F1), Hamulus_65 (F1), Harley_67 (F1), Hegedechwinu_65 (F1), Hlubikazi_61 (F1), IbOuu_67 (F1), Ibhubesi_65 (F1), IrishSherpFalk_66 (F1), Jabbawokkie_80 (F2), JalFarm20_78 (F1), James_69 (F1), Jant_69 (F1), Jeon_52 (W), Jinglebell_71 (F1), JoeyJr_61 (F1), Juice456_66 (F1), Juniper1_65 (F1), Karhdo_64 (F1), Kenuha5_63 (F1), Kersh_67 (F1), Kimberlium_70 (F1), KingMidas_65 (F1), Kingsley_63 (F1), Koella_59 (F1), Krakatau_62 (F1), KristaRAM_68 (F1), LastJedi_59 (F1), Leozinho_64 (F1), Leperchaun_58 (F1), LilMoolah_64 (F1), LittleShirley_65 (F1), Lizziana_71 (F1), Llama_70 (F1), Llij_61 (F1), Lorde_65 (F1), LunaBlu_67 (F1), LunaStella_65 (F4), MadMen_65 (F1), Madiba_66 (F1), Mahavrat_62 (F1), Mandlovu_61 (F1), Mantra_62 (F1), Maravista_67 (F1), Marker_67 (F1), Martik_65 (F1), Mattes_69 (F1), Megabear_52 (W), Melissauren88_63 (F1), MilleniumForce_68 (F1), MinionDave_64 (F1), Minnie_68 (F1), MisterCuddles_63 (F1), Modragons_69 (F1), Moonbeam_64 (F1), Mova_69 (F1), Mozy_75 (F1), Ms6_62 (F1), MulchExplorer_73 (F1), Mutaforma13_71 (F1), Nimbo_59 (F1), Nitzel_62 (F1), Nivrat_62 (F1), NormanBulbieJr_65 (F1), Ochi17_69 (F1), OfUltron_71 (F1), Ogopogo_71 (F1), OldBen_63 (F1), OlympiaSaint_67 (F1), Ovechkin_65 (F1), OwlsT2W_65 (F1), PHappiness_61 (F1), PMC_62 (F1), PR_52 (W), Pacc40_59 (F1), Phalconet_63 (F1), Phanphagia_61 (F1), Phatniss_63 (F1), PhesterPotato_65 (F1), Philus_69 (F1), Pippy_64 (F1), Plumbus_68 (F1), Polka14_64 (F1), Pollywog_66 (F1), PopTart_59 (F1), Priscilla_65 (F1), QuickMath_69 (F1), Quico_73 (F1), Radiance_64 (F1), Ramsey_64 (F1), RedBird_64 (F1), Renaud18_75 (F4), Rialto_70 (F1), RitaG_61 (F1), Rita_66 (F1), Rockne_66 (F1), RockyHorror_66 (F1), Royals2015_68 (F1), Ruby_61 (F1), SG4_62 (F1), Saal_67 (F1), Sandalphon_66 (F1), Sarma624_64 (F1), Sassafras_64 (F1), SassyB_59 (F1), Scottish_64 (F1), Sebastian_71 (F1), Seagreen_64 (F1), Shauna1_63 (F1), ShiLan_64 (F1), ShowerHandel_68 (F1), SiSi_63 (F1), SilverChicken_75 (F2), Soul22_71 (F2), Spartacus_67 (F1), Spikelee_72 (F1), Spoonbill_63 (F1), Squirty_67 (F3), StAnnes_63 (F1), Stap_63 (F1), Starceвич_65 (F1), Strokeseat_61 (F1), SuperGrey_69 (F1), SwagPigglett_70 (F1), TChen_67 (F4), TDanisky_72 (F1), Taj_70 (F1), Taptic_52 (W), Tchotchke_64 (F1), ThetaBob_73 (F4), Totinger_65 (F1), Tweety_65 (F1), UncleRicky_64 (F1), VRedHorse_65 (F1), Velveteen_61 (F1), Veteran_62 (F1), Violac_67 (F1), Vivum_68 (F1), Wachhund_66 (F1), Wee_70 (F1), Whatsapiecost_65 (F1), Whouxphf_62 (F1), WillSterrel_66 (F1), XFactor_63 (F1), Yorick_64 (F1), Yoshi_81 (F2), Zapner_79 (F2), Zerg_65 (F1), Zizzle_69 (F1),

Start 112:

- Found in 1 of 597 (0.2%) of genes in pham
- Manual Annotations of this start: 1 of 525
- Called 100.0% of time when present
- Phage (with cluster) where this start called: Dardanus_46 (CU3),

Start 113:

- Found in 14 of 597 (2.3%) of genes in pham
- Manual Annotations of this start: 13 of 525
- Called 92.9% of time when present
- Phage (with cluster) where this start called: Banquo_50 (CU1), Catfish_49 (CU5), DinoDaryn_52 (CU1), Goib_52 (CU1), Huffy_52 (CU1), Keelan_96 (DP), Megan_52 (EC), Nicole72_53 (EC), Schmidt_45 (CU4), Splinter_51 (CU1), TZGordon_53 (CU1), TinaLin_50 (CU1), Vendetta_51 (CU1),

Start 114:

- Found in 11 of 597 (1.8%) of genes in pham
- Manual Annotations of this start: 3 of 525
- Called 81.8% of time when present
- Phage (with cluster) where this start called: Amo99_93 (CP), ColdSoup_93 (CP), DelaGarza_58 (GF), DonTron_90 (CP), Gingerbug_57 (GF), KingstonB_93 (CP), Lesiram_59 (GF), Teng_62 (GF), Wrackline_70 (GF),

Start 115:

- Found in 18 of 597 (3.0%) of genes in pham
- Manual Annotations of this start: 14 of 525
- Called 94.4% of time when present
- Phage (with cluster) where this start called: Archie_67 (L2), BourbonZero_66 (L3), Clautastrophe_65 (L3), DuncansLeg_66 (L3), Finnry_66 (L3), Jobypre_66 (L3), Jubie_65 (L3), Krypton555_67 (L3), Lolly9_65 (L3), Lumos_67 (L3), MiniLon_69 (L3), MsGreen_66 (L3), Red305_66 (L3), Samty_66 (L3), Snenia_65 (L3), TriFive_66 (L3), Whirlwind_66 (L3),

Start 116:

- Found in 3 of 597 (0.5%) of genes in pham
- Manual Annotations of this start: 3 of 525
- Called 100.0% of time when present
- Phage (with cluster) where this start called: Leozinho_66 (F1), MadMen_67 (F1), MooMoo_66 (singleton),

Start 117:

- Found in 6 of 597 (1.0%) of genes in pham
- Manual Annotations of this start: 2 of 525
- Called 83.3% of time when present
- Phage (with cluster) where this start called: Forrestell_81 (AP2), MellowYellow_85 (AP2), NyleyClemson_84 (AP2), Pureglobe5_83 (AP2), RazzB_81 (AP2),

Start 118:

- Found in 30 of 597 (5.0%) of genes in pham
- Manual Annotations of this start: 7 of 525
- Called 40.0% of time when present
- Phage (with cluster) where this start called: Aleemily_105 (DZ), Atlantica_30 (AS3), BruhMoment_74 (AP3), Cafasso_107 (DZ), Camara_30 (AS3), DanHam62_30 (AS3), HamCheese_29 (AS3), KHumphrey_30 (AS3), Morgana_114 (DZ), ObLaDi_106

(DZ), Rattail_30 (AS3), Tonitrus_70 (singleton),

Start 119:

- Found in 5 of 597 (0.8%) of genes in pham
- Manual Annotations of this start: 5 of 525
- Called 100.0% of time when present
- Phage (with cluster) where this start called: AvadaKedavra_66 (L1), Rose5_66 (L1), Tyson_67 (L1), Wamburgxpress_66 (L1), Wyatt2_67 (L1),

Start 120:

- Found in 24 of 597 (4.0%) of genes in pham
- Manual Annotations of this start: 22 of 525
- Called 100.0% of time when present
- Phage (with cluster) where this start called: Ariel_118 (J), BAKA_122 (J), Bagrid_123 (J), Bobby_115 (J), Courthouse_113 (J), DmpstrDiver_123 (J), Duke13_117 (J), Ejimix_117 (J), EricMillard_114 (J), Gonephishing_112 (J), Halley_125 (J), Hughesyang_122 (J), Kalah2_114 (J), Klein_119 (J), LittleE_122 (J), Minerva_120 (J), Optimus_113 (J), Pound_112 (J), Redno2_116 (J), Squint_116 (J), Superphikiman_115 (J), ThreeRngTarjay_118 (J), Wanda_122 (J), Zelink_117 (J),

Start 121:

- Found in 170 of 597 (28.5%) of genes in pham
- Manual Annotations of this start: 157 of 525
- Called 100.0% of time when present
- Phage (with cluster) where this start called: 244_78 (E), ABCat_74 (E), AWGoat_61 (AP4), Adnama_81 (E), Aegeus_71 (L5), Amao_77 (E), AmericanBeauty_81 (E), Argent26_81 (E), Asriel_76 (E), BaboJay_74 (E), BadStone_74 (E), Balomoji_77 (E), Barbarian_76 (E), Bask21_77 (E), Baudelaire_71 (L5), Beagle_86 (AP2), BearBQ_70 (DN), Becksu_76 (E), Beem_125 (J), Bench_80 (E), BigBubba_77 (E), BilboSwaggins_76 (E), BotCity_77 (DN), BritBrat_66 (CY2), Bruin_74 (E), Buck_78 (E), BugsBunny_77 (E), Cactus_80 (E), CheeseTouch_74 (DN1), ChosenOne_77 (E), ChotaBhai_77 (E), Cjw1_77 (E), Command613_79 (E), Constella_107 (J), Contagion_73 (E), Cookies_74 (E), CrystalP_76 (E), Czyszczonek_78 (E), Daikon_79 (E), Dallas_124 (J), DoctorDiddles_76 (E), Dove_109 (J), DrDrey_77 (E), Dumbo_77 (E), Dusk_74 (E), Easy2Say_78 (E), Ecliptus_75 (DN), Elite2014_76 (E), Elph10_77 (E), Emmina_77 (E), Eureka_75 (E), FairyPath_77 (E), Filch_78 (E), FireRed_81 (E), Flypotenuse_73 (E), FoghornLeghorn_71 (E), GAL1_54 (singleton), Gage_79 (E), Gaia_85 (X), Gator_75 (E), Gemini_82 (E), Glexan_76 (E), Goku_75 (E), GoldenSpark_81 (E), Goldilocks_80 (E), GooberAzure_80 (E), HanKaySha_77 (E), Harella_77 (E), Henry_75 (E), Highbury_76 (E), Holt_82 (E), Hoonter_80 (E), Hopey_77 (E), Horus_72 (DN1), HuffyPuff_80 (E), IHOP_75 (E), Icee_78 (E), Inca_74 (E), JeTaime_77 (E), JuicyJay_120 (J), Kanye_74 (E), Kimchi_81 (E), Kostya_77 (E), Kubulix_81 (AP2), Kuwabara_72 (DN4), Lilac_79 (E), Lilizi_78 (E), Lilpickle_76 (E), LitninMcQueen_71 (DN1), MISSy_78 (E), MPhalcon_78 (E), MadamMonkfish_77 (E), Manda_78 (E), Marshmallow_75 (E), Maxxinista_79 (E), MiaZeal_118 (J), Mindy_76 (E), Miniwave_72 (E), Misfit_78 (E), Moldemort_80 (E), Mosby_73 (E), Murica_80 (E), Murphy_77 (E), Myrale_77 (E), Nala_79 (E), Nebkiss_84 (X), NelitzaMV_75 (E), NihilNomen_125 (J), Nimrod_78 (E), NoSleep_78 (E), ODay_78 (DN), Odyssey395_85 (AP2), OrionPax_76 (E), Palpatine_79 (E), Paperbeatsrock_76 (E), Pat3_75 (E), Petra64142_81 (E), Phabuloso_75 (DN1), Phaja_75 (E), Pharsalus_74 (E), PhatBacter_81 (E), Phaux_79 (E), Phoebus_124 (J), Phrux_74 (E), Pointis_81 (AP2), Policronamos_80 (E), Porky_76 (E), Pumpkin_80 (E), Quallification_78 (E), Rakim_78 (E), Ranunculus_78 (AP), Rimmer_78 (E),

RiverMonster_77 (E), Rizwana_65 (AP1), Saints25_76 (E), Sassay_72 (E), ShamWow_77 (E), SilentRX_62 (AP4), Simpliphy_76 (E), SirDuracell_76 (E), SophKB_74 (E), Sotrice96_78 (E), Spooky_68 (DN2), Squiddly_73 (DN2), Stank_80 (E), Stark_78 (E), StellaBean_75 (E), StolenFromERC_80 (E), StormChicken_79 (E), TBrady12_80 (E), Tank_65 (AP1), Tarkin_76 (E), TeardropMSU_73 (E), Teaspoon_78 (E), Terminus_80 (E), Thibault_106 (J), Thimble_79 (E), Thresher_79 (E), Tomaszewski_72 (E), Toto_75 (E), Traaww1_73 (E), Tuco_78 (E), Ukulele_72 (E), Wiggin_79 (E), Wilde_67 (AP1), Willez_72 (E), Xandras_76 (E), YassJohnny_74 (E), Youngblood_80 (E), xkcd_80 (E),

Start 122:

- Found in 1 of 597 (0.2%) of genes in pham
- Manual Annotations of this start: 1 of 525
- Called 100.0% of time when present
- Phage (with cluster) where this start called: VanLee_116 (singleton),

Start 123:

- Found in 4 of 597 (0.7%) of genes in pham
- Manual Annotations of this start: 4 of 525
- Called 100.0% of time when present
- Phage (with cluster) where this start called: Fryberger_95 (DP), Guey18_100 (DP), Ronaldo_98 (DP), Volt_99 (DP),

Start 125:

- Found in 6 of 597 (1.0%) of genes in pham
- Manual Annotations of this start: 3 of 525
- Called 100.0% of time when present
- Phage (with cluster) where this start called: Altostratus_53 (FS), Hum25_55 (FQ), Khuang_54 (FS), MrSmee_53 (FQ), Pitbull_53 (FQ), Skitty_53 (FQ),

Start 127:

- Found in 1 of 597 (0.2%) of genes in pham
- Manual Annotations of this start: 1 of 525
- Called 100.0% of time when present
- Phage (with cluster) where this start called: JustASigh_98 (AH),

Start 128:

- Found in 32 of 597 (5.4%) of genes in pham
- Manual Annotations of this start: 1 of 525
- Called 3.1% of time when present
- Phage (with cluster) where this start called: Inventum_61 (F1),

Start 132:

- Found in 31 of 597 (5.2%) of genes in pham
- Manual Annotations of this start: 1 of 525
- Called 6.5% of time when present
- Phage (with cluster) where this start called: MiniMac_69 (L3), ModicumRichard_107 (DZ),

Summary by clusters:

There are 46 clusters represented in this pham: DN, FQ, singleton, FS, GA, CY2, AP2, AP3, V, AP4, DZ, EI, DP, CU5, CU4, CU3, CU1, DN4, DN1, DN2, DU1, DU2,

AS3, AS2, AP1, E, F, AH, J, EC, GF, S, L5, L2, L3, W, L1, Y, X, CP, F1, F2, F3, F4, F5, AP,

Info for manual annotations of cluster AH:

- Start number 127 was manually annotated 1 time for cluster AH.

Info for manual annotations of cluster AP:

- Start number 121 was manually annotated 1 time for cluster AP.

Info for manual annotations of cluster AP1:

- Start number 121 was manually annotated 3 times for cluster AP1.

Info for manual annotations of cluster AP2:

- Start number 117 was manually annotated 2 times for cluster AP2.
- Start number 121 was manually annotated 3 times for cluster AP2.

Info for manual annotations of cluster AP3:

- Start number 118 was manually annotated 1 time for cluster AP3.

Info for manual annotations of cluster AP4:

- Start number 121 was manually annotated 2 times for cluster AP4.

Info for manual annotations of cluster AS2:

- Start number 72 was manually annotated 1 time for cluster AS2.
- Start number 91 was manually annotated 9 times for cluster AS2.
- Start number 98 was manually annotated 1 time for cluster AS2.

Info for manual annotations of cluster AS3:

- Start number 91 was manually annotated 5 times for cluster AS3.
- Start number 98 was manually annotated 1 time for cluster AS3.
- Start number 118 was manually annotated 1 time for cluster AS3.

Info for manual annotations of cluster CP:

- Start number 88 was manually annotated 1 time for cluster CP.
- Start number 105 was manually annotated 3 times for cluster CP.

Info for manual annotations of cluster CU1:

- Start number 113 was manually annotated 8 times for cluster CU1.

Info for manual annotations of cluster CU3:

- Start number 112 was manually annotated 1 time for cluster CU3.

Info for manual annotations of cluster CU4:

- Start number 113 was manually annotated 1 time for cluster CU4.

Info for manual annotations of cluster CU5:

- Start number 113 was manually annotated 1 time for cluster CU5.

Info for manual annotations of cluster CY2:

- Start number 121 was manually annotated 1 time for cluster CY2.

Info for manual annotations of cluster DN:

- Start number 121 was manually annotated 3 times for cluster DN.

Info for manual annotations of cluster DN1:

- Start number 121 was manually annotated 4 times for cluster DN1.

Info for manual annotations of cluster DN2:

- Start number 121 was manually annotated 2 times for cluster DN2.

Info for manual annotations of cluster DN4:

- Start number 121 was manually annotated 1 time for cluster DN4.

Info for manual annotations of cluster DP:

- Start number 113 was manually annotated 1 time for cluster DP.
- Start number 123 was manually annotated 4 times for cluster DP.

Info for manual annotations of cluster DU1:

- Start number 73 was manually annotated 2 times for cluster DU1.
- Start number 108 was manually annotated 1 time for cluster DU1.

Info for manual annotations of cluster DU2:

- Start number 110 was manually annotated 2 times for cluster DU2.

Info for manual annotations of cluster DZ:

- Start number 118 was manually annotated 4 times for cluster DZ.

Info for manual annotations of cluster E:

- Start number 121 was manually annotated 124 times for cluster E.

Info for manual annotations of cluster EC:

- Start number 113 was manually annotated 2 times for cluster EC.

Info for manual annotations of cluster EI:

- Start number 102 was manually annotated 1 time for cluster EI.
- Start number 103 was manually annotated 5 times for cluster EI.
- Start number 106 was manually annotated 1 time for cluster EI.

Info for manual annotations of cluster F1:

- Start number 111 was manually annotated 194 times for cluster F1.
- Start number 116 was manually annotated 2 times for cluster F1.
- Start number 128 was manually annotated 1 time for cluster F1.

Info for manual annotations of cluster F2:

- Start number 111 was manually annotated 7 times for cluster F2.

Info for manual annotations of cluster F3:

- Start number 111 was manually annotated 1 time for cluster F3.

Info for manual annotations of cluster F4:

- Start number 111 was manually annotated 4 times for cluster F4.

Info for manual annotations of cluster F5:

- Start number 111 was manually annotated 1 time for cluster F5.

Info for manual annotations of cluster FQ:

- Start number 125 was manually annotated 3 times for cluster FQ.

Info for manual annotations of cluster GA:

- Start number 107 was manually annotated 9 times for cluster GA.

Info for manual annotations of cluster GF:

- Start number 114 was manually annotated 3 times for cluster GF.

Info for manual annotations of cluster J:

- Start number 91 was manually annotated 1 time for cluster J.
- Start number 96 was manually annotated 1 time for cluster J.
- Start number 120 was manually annotated 22 times for cluster J.
- Start number 121 was manually annotated 9 times for cluster J.

Info for manual annotations of cluster L1:

- Start number 119 was manually annotated 5 times for cluster L1.

Info for manual annotations of cluster L2:

- Start number 115 was manually annotated 1 time for cluster L2.

Info for manual annotations of cluster L3:

- Start number 115 was manually annotated 13 times for cluster L3.
- Start number 132 was manually annotated 1 time for cluster L3.

Info for manual annotations of cluster L5:

- Start number 121 was manually annotated 2 times for cluster L5.

Info for manual annotations of cluster S:

- Start number 93 was manually annotated 17 times for cluster S.

Info for manual annotations of cluster V:

- Start number 97 was manually annotated 5 times for cluster V.

Info for manual annotations of cluster W:

- Start number 111 was manually annotated 8 times for cluster W.

Info for manual annotations of cluster X:

- Start number 121 was manually annotated 2 times for cluster X.

Info for manual annotations of cluster Y:

- Start number 98 was manually annotated 4 times for cluster Y.

Gene Information:

Gene: 244_78 Start: 48609, Stop: 48926, Start Num: 121

Candidate Starts for 244_78:

(43, 48426), (Start: 121 @48609 has 157 MA's), (160, 48750),

Gene: ABCat_74 Start: 48962, Stop: 49279, Start Num: 121

Candidate Starts for ABCat_74:
(43, 48779), (Start: 121 @48962 has 157 MA's), (160, 49103),

Gene: AWGoat_61 Start: 44482, Stop: 44168, Start Num: 121
Candidate Starts for AWGoat_61:
(Start: 121 @44482 has 157 MA's), (156, 44356), (196, 44224), (202, 44215),

Gene: Adnama_81 Start: 48988, Stop: 49305, Start Num: 121
Candidate Starts for Adnama_81:
(43, 48805), (Start: 121 @48988 has 157 MA's), (160, 49129),

Gene: Aegeus_71 Start: 46495, Stop: 46824, Start Num: 121
Candidate Starts for Aegeus_71:
(Start: 121 @46495 has 157 MA's), (147, 46579), (180, 46717), (188, 46744), (190, 46750), (198, 46774), (216, 46813),

Gene: Aleemily_105 Start: 59933, Stop: 60322, Start Num: 118
Candidate Starts for Aleemily_105:
(7, 59546), (10, 59558), (28, 59657), (Start: 118 @59933 has 7 MA's), (133, 59966), (139, 59987), (176, 60134), (185, 60164), (193, 60188),

Gene: Alexphander_69 Start: 42282, Stop: 42644, Start Num: 111
Candidate Starts for Alexphander_69:
(Start: 111 @42282 has 216 MA's), (197, 42582), (218, 42627),

Gene: AlpineSix_71 Start: 45319, Stop: 45681, Start Num: 111
Candidate Starts for AlpineSix_71:
(Start: 111 @45319 has 216 MA's), (172, 45523), (197, 45619), (218, 45664),

Gene: Altostratus_53 Start: 31416, Stop: 31790, Start Num: 125
Candidate Starts for Altostratus_53:
(Start: 125 @31416 has 3 MA's), (165, 31569), (218, 31749), (224, 31761),

Gene: Amao_77 Start: 48382, Stop: 48699, Start Num: 121
Candidate Starts for Amao_77:
(43, 48199), (Start: 121 @48382 has 157 MA's), (Start: 132 @48406 has 1 MA's), (160, 48523),

Gene: Amelia_32 Start: 21518, Stop: 21165, Start Num: 91
Candidate Starts for Amelia_32:
(41, 21644), (51, 21605), (Start: 91 @21518 has 15 MA's), (148, 21389), (159, 21344), (191, 21224),

Gene: AmericanBeauty_81 Start: 49131, Stop: 49448, Start Num: 121
Candidate Starts for AmericanBeauty_81:
(43, 48948), (Start: 121 @49131 has 157 MA's), (160, 49272),

Gene: AmiCi24_29 Start: 20870, Stop: 20517, Start Num: 91
Candidate Starts for AmiCi24_29:
(2, 21272), (19, 21122), (65, 20927), (Start: 91 @20870 has 15 MA's), (Start: 118 @20837 has 7 MA's), (148, 20741),

Gene: Amo99_93 Start: 57523, Stop: 57891, Start Num: 114
Candidate Starts for Amo99_93:

(32, 57298), (Start: 105 @57511 has 3 MA's), (Start: 114 @57523 has 3 MA's), (188, 57772), (191, 57781), (200, 57805), (203, 57811), (221, 57853),

Gene: Andrew_31 Start: 20815, Stop: 20462, Start Num: 98

Candidate Starts for Andrew_31:

(3, 21166), (65, 20890), (Start: 98 @20815 has 6 MA's), (148, 20686), (191, 20521),

Gene: Antrice_35 Start: 22599, Stop: 22243, Start Num: 94

Candidate Starts for Antrice_35:

(41, 22743), (65, 22668), (94, 22599), (Start: 118 @22563 has 7 MA's), (143, 22491), (148, 22467),

Gene: Antuna_42 Start: 25698, Stop: 26075, Start Num: 107

Candidate Starts for Antuna_42:

(Start: 107 @25698 has 9 MA's), (138, 25761), (145, 25788), (188, 25962), (190, 25968), (196, 25989), (227, 26064),

Gene: Appa_41 Start: 25620, Stop: 25997, Start Num: 107

Candidate Starts for Appa_41:

(Start: 107 @25620 has 9 MA's), (138, 25683), (188, 25884), (190, 25890), (196, 25911), (227, 25986),

Gene: Archie_67 Start: 46551, Stop: 46892, Start Num: 115

Candidate Starts for Archie_67:

(Start: 115 @46551 has 14 MA's), (159, 46698),

Gene: ArcusAngelus_67 Start: 42632, Stop: 42994, Start Num: 111

Candidate Starts for ArcusAngelus_67:

(Start: 111 @42632 has 216 MA's), (159, 42791), (197, 42932), (200, 42935), (218, 42977),

Gene: Ardmore_57 Start: 40049, Stop: 40405, Start Num: 111

Candidate Starts for Ardmore_57:

(Start: 111 @40049 has 216 MA's), (197, 40349), (200, 40352),

Gene: Argent26_81 Start: 48769, Stop: 49086, Start Num: 121

Candidate Starts for Argent26_81:

(43, 48586), (Start: 121 @48769 has 157 MA's), (160, 48910),

Gene: Argie_53 Start: 44207, Stop: 44548, Start Num: 111

Candidate Starts for Argie_53:

(Start: 111 @44207 has 216 MA's), (137, 44261), (140, 44276), (144, 44294), (160, 44360), (167, 44378), (177, 44432), (189, 44477), (197, 44498), (207, 44522), (208, 44525),

Gene: Ariel_118 Start: 64179, Stop: 64499, Start Num: 120

Candidate Starts for Ariel_118:

(Start: 120 @64179 has 22 MA's), (141, 64248), (152, 64290), (180, 64407),

Gene: Asriel_76 Start: 47325, Stop: 47642, Start Num: 121

Candidate Starts for Asriel_76:

(43, 47142), (Start: 121 @47325 has 157 MA's), (160, 47466),

Gene: Atlantica_30 Start: 20838, Stop: 20518, Start Num: 118

Candidate Starts for Atlantica_30:

(2, 21273), (19, 21123), (65, 20928), (Start: 91 @20871 has 15 MA's), (Start: 118 @20838 has 7 MA's), (148, 20742),

Gene: Aubs_65 Start: 42690, Stop: 43052, Start Num: 111

Candidate Starts for Aubs_65:

(59, 42573), (Start: 111 @42690 has 216 MA's), (159, 42849), (197, 42990), (218, 43035),

Gene: AuntGwenStacy_65 Start: 45161, Stop: 45511, Start Num: 98

Candidate Starts for AuntGwenStacy_65:

(70, 45089), (79, 45119), (Start: 98 @45161 has 6 MA's), (Start: 106 @45176 has 1 MA's), (Start: 118 @45194 has 7 MA's), (137, 45242), (139, 45248), (147, 45284), (172, 45368), (173, 45374), (178, 45404), (188, 45437),

Gene: AvadaKedavra_66 Start: 45153, Stop: 45521, Start Num: 119

Candidate Starts for AvadaKedavra_66:

(Start: 119 @45153 has 5 MA's), (133, 45180), (149, 45249), (154, 45270), (160, 45294), (180, 45375), (201, 45438), (230, 45513),

Gene: Avani_73 Start: 42666, Stop: 43022, Start Num: 111

Candidate Starts for Avani_73:

(Start: 111 @42666 has 216 MA's), (197, 42966), (200, 42969),

Gene: Azrael100_76 Start: 48787, Stop: 49152, Start Num: 97

Candidate Starts for Azrael100_76:

(Start: 73 @48724 has 2 MA's), (Start: 97 @48787 has 5 MA's), (167, 48979), (198, 49099), (211, 49132),

Gene: BAKA_122 Start: 67774, Stop: 68106, Start Num: 120

Candidate Starts for BAKA_122:

(Start: 120 @67774 has 22 MA's), (141, 67843), (166, 67933), (167, 67936), (180, 68002),

Gene: BaboJay_74 Start: 48162, Stop: 48479, Start Num: 121

Candidate Starts for BaboJay_74:

(43, 47979), (Start: 121 @48162 has 157 MA's), (160, 48303),

Gene: Babushka_29 Start: 20785, Stop: 20432, Start Num: 91

Candidate Starts for Babushka_29:

(19, 21037), (65, 20842), (Start: 91 @20785 has 15 MA's), (Start: 118 @20752 has 7 MA's), (148, 20656), (161, 20605), (191, 20491), (200, 20467),

Gene: BadStone_74 Start: 48531, Stop: 48848, Start Num: 121

Candidate Starts for BadStone_74:

(43, 48348), (Start: 121 @48531 has 157 MA's), (160, 48672),

Gene: Bagrid_123 Start: 67735, Stop: 68064, Start Num: 120

Candidate Starts for Bagrid_123:

(Start: 120 @67735 has 22 MA's), (141, 67804), (180, 67963), (209, 68047),

Gene: Balomoji_77 Start: 49092, Stop: 49409, Start Num: 121

Candidate Starts for Balomoji_77:

(43, 48909), (Start: 121 @49092 has 157 MA's), (160, 49233),

Gene: Banquo_50 Start: 32516, Stop: 32896, Start Num: 113

Candidate Starts for Banquo_50:

(Start: 113 @32516 has 13 MA's), (139, 32579), (152, 32639), (180, 32756), (190, 32795), (201, 32822), (217, 32864),

Gene: Barbarian_76 Start: 47325, Stop: 47642, Start Num: 121

Candidate Starts for Barbarian_76:

(43, 47142), (Start: 121 @47325 has 157 MA's), (160, 47466),

Gene: Bask21_77 Start: 47945, Stop: 48262, Start Num: 121

Candidate Starts for Bask21_77:

(43, 47762), (Start: 121 @47945 has 157 MA's), (Start: 132 @47969 has 1 MA's), (160, 48086),

Gene: Batiatus_63 Start: 41925, Stop: 42281, Start Num: 111

Candidate Starts for Batiatus_63:

(Start: 111 @41925 has 216 MA's), (197, 42225), (200, 42228),

Gene: Baudelaire_71 Start: 46495, Stop: 46824, Start Num: 121

Candidate Starts for Baudelaire_71:

(Start: 121 @46495 has 157 MA's), (147, 46579), (180, 46717), (188, 46744), (190, 46750), (198, 46774), (216, 46813),

Gene: Beagle_86 Start: 50592, Stop: 50260, Start Num: 121

Candidate Starts for Beagle_86:

(Start: 121 @50592 has 157 MA's), (133, 50559), (162, 50442), (172, 50412), (175, 50397), (177, 50382), (191, 50340), (193, 50334), (196, 50322), (202, 50313), (210, 50289),

Gene: Beakin_66 Start: 41229, Stop: 41591, Start Num: 111

Candidate Starts for Beakin_66:

(Start: 111 @41229 has 216 MA's), (159, 41388), (197, 41529), (200, 41532), (218, 41574),

Gene: BearBQ_70 Start: 44365, Stop: 44712, Start Num: 121

Candidate Starts for BearBQ_70:

(67, 44251), (Start: 104 @44341 has 1 MA's), (Start: 121 @44365 has 157 MA's), (Start: 128 @44386 has 1 MA's), (135, 44404), (137, 44413), (152, 44488), (180, 44605), (188, 44635), (200, 44665), (211, 44692), (218, 44704),

Gene: Becksu_76 Start: 49161, Stop: 49478, Start Num: 121

Candidate Starts for Becksu_76:

(43, 48978), (Start: 121 @49161 has 157 MA's), (160, 49302),

Gene: Bedetta_34 Start: 21656, Stop: 21303, Start Num: 91

Candidate Starts for Bedetta_34:

(41, 21782), (51, 21743), (Start: 91 @21656 has 15 MA's), (148, 21527), (159, 21482), (191, 21362),

Gene: Beelzebub_73 Start: 40109, Stop: 40462, Start Num: 93

Candidate Starts for Beelzebub_73:

(Start: 93 @40109 has 17 MA's), (109, 40136), (155, 40271), (169, 40301), (178, 40352), (180, 40358), (184, 40373), (190, 40391), (197, 40415), (199, 40418),

Gene: Beem_125 Start: 69590, Stop: 69922, Start Num: 121

Candidate Starts for Beem_125:

(Start: 121 @69590 has 157 MA's), (153, 69701), (156, 69725), (209, 69905),

Gene: Bench_80 Start: 48629, Stop: 48946, Start Num: 121

Candidate Starts for Bench_80:

(43, 48446), (Start: 121 @48629 has 157 MA's), (160, 48770),

Gene: BigBubba_77 Start: 48341, Stop: 48658, Start Num: 121

Candidate Starts for BigBubba_77:

(43, 48158), (Start: 121 @48341 has 157 MA's), (160, 48482),

Gene: BigPhil_62 Start: 39148, Stop: 39510, Start Num: 111

Candidate Starts for BigPhil_62:

(Start: 111 @39148 has 216 MA's), (159, 39307), (172, 39352), (197, 39448), (200, 39451), (218, 39493),

Gene: BilboSwaggins_76 Start: 48970, Stop: 49287, Start Num: 121

Candidate Starts for BilboSwaggins_76:

(43, 48787), (Start: 121 @48970 has 157 MA's), (160, 49111),

Gene: Bipolar_65 Start: 42690, Stop: 43052, Start Num: 111

Candidate Starts for Bipolar_65:

(Start: 111 @42690 has 216 MA's), (159, 42849), (197, 42990), (218, 43035),

Gene: Bipper_62 Start: 43632, Stop: 43982, Start Num: 98

Candidate Starts for Bipper_62:

(25, 43371), (44, 43479), (46, 43488), (70, 43560), (79, 43590), (Start: 98 @43632 has 6 MA's), (Start: 106 @43647 has 1 MA's), (Start: 117 @43662 has 2 MA's), (126, 43680), (137, 43713), (147, 43755), (177, 43869), (196, 43935),

Gene: Blackbeetle_69 Start: 39121, Stop: 39474, Start Num: 93

Candidate Starts for Blackbeetle_69:

(Start: 93 @39121 has 17 MA's), (109, 39148), (155, 39283), (169, 39313), (178, 39364), (180, 39370), (184, 39385), (190, 39403), (197, 39427), (199, 39430),

Gene: Blarby_78 Start: 44162, Stop: 44503, Start Num: 111

Candidate Starts for Blarby_78:

(100, 44147), (Start: 111 @44162 has 216 MA's), (197, 44462), (200, 44465),

Gene: Blett_41 Start: 25800, Stop: 26177, Start Num: 107

Candidate Starts for Blett_41:

(Start: 107 @25800 has 9 MA's), (138, 25863), (145, 25890), (160, 25956), (188, 26064), (190, 26070), (196, 26091), (227, 26166),

Gene: Blexus_63 Start: 42819, Stop: 43181, Start Num: 111

Candidate Starts for Blexus_63:

(Start: 111 @42819 has 216 MA's), (159, 42978), (197, 43119), (218, 43164),

Gene: BlueCrab_66 Start: 43528, Stop: 43884, Start Num: 111

Candidate Starts for BlueCrab_66:

(Start: 111 @43528 has 216 MA's), (165, 43702), (197, 43828),

Gene: BobaPhett_69 Start: 45114, Stop: 45476, Start Num: 111

Candidate Starts for BobaPhett_69:

(Start: 111 @45114 has 216 MA's), (159, 45273), (165, 45288), (197, 45414), (218, 45459),

Gene: Bobby_115 Start: 69193, Stop: 69522, Start Num: 120

Candidate Starts for Bobby_115:

(Start: 120 @69193 has 22 MA's), (141, 69262), (166, 69352), (167, 69355), (180, 69421), (209, 69505),

Gene: Bobi_69 Start: 43528, Stop: 43884, Start Num: 111

Candidate Starts for Bobi_69:

(Start: 111 @43528 has 216 MA's), (197, 43828), (200, 43831),

Gene: BodEinwohner17_66 Start: 42524, Stop: 42886, Start Num: 111

Candidate Starts for BodEinwohner17_66:

(62, 42419), (66, 42425), (87, 42479), (Start: 111 @42524 has 216 MA's), (Start: 128 @42557 has 1 MA's), (197, 42824), (200, 42827), (218, 42869),

Gene: Boomer_70 Start: 44186, Stop: 44542, Start Num: 111

Candidate Starts for Boomer_70:

(Start: 111 @44186 has 216 MA's), (197, 44486), (200, 44489),

Gene: BotCity_77 Start: 44601, Stop: 44948, Start Num: 121

Candidate Starts for BotCity_77:

(67, 44487), (Start: 104 @44577 has 1 MA's), (Start: 121 @44601 has 157 MA's), (Start: 128 @44622 has 1 MA's), (135, 44640), (137, 44649), (152, 44724), (180, 44841), (188, 44871), (200, 44901), (211, 44928), (218, 44940),

Gene: BourbonZero_66 Start: 46515, Stop: 46847, Start Num: 115

Candidate Starts for BourbonZero_66:

(69, 46410), (Start: 115 @46515 has 14 MA's), (154, 46638), (161, 46665), (180, 46743), (191, 46779), (207, 46824),

Gene: BritBrat_66 Start: 43849, Stop: 44178, Start Num: 121

Candidate Starts for BritBrat_66:

(63, 43735), (Start: 105 @43825 has 3 MA's), (Start: 121 @43849 has 157 MA's), (154, 43963), (159, 43984), (180, 44068), (187, 44092), (211, 44158), (218, 44170),

Gene: Brocalys_60 Start: 39296, Stop: 39658, Start Num: 111

Candidate Starts for Brocalys_60:

(59, 39179), (Start: 111 @39296 has 216 MA's), (159, 39455), (197, 39596), (218, 39641),

Gene: Brookers_63 Start: 42099, Stop: 42461, Start Num: 111

Candidate Starts for Brookers_63:

(Start: 111 @42099 has 216 MA's), (159, 42258), (172, 42303), (197, 42399), (200, 42402), (218, 42444),

Gene: BruhMoment_74 Start: 49610, Stop: 49293, Start Num: 118

Candidate Starts for BruhMoment_74:

(Start: 118 @49610 has 7 MA's), (149, 49508), (162, 49469), (196, 49349),

Gene: Bruin_74 Start: 47505, Stop: 47822, Start Num: 121

Candidate Starts for Bruin_74:

(43, 47322), (Start: 121 @47505 has 157 MA's), (160, 47646),

Gene: Brushbloom_72 Start: 42857, Stop: 43213, Start Num: 111

Candidate Starts for Brushbloom_72:

(Start: 111 @42857 has 216 MA's), (197, 43157), (200, 43160),

Gene: Buck_78 Start: 49210, Stop: 49527, Start Num: 121

Candidate Starts for Buck_78:

(43, 49027), (Start: 121 @49210 has 157 MA's), (160, 49351),

Gene: BugsBunny_77 Start: 49037, Stop: 49354, Start Num: 121

Candidate Starts for BugsBunny_77:

(43, 48854), (Start: 121 @49037 has 157 MA's), (160, 49178),

Gene: Burwell21_63 Start: 42397, Stop: 42759, Start Num: 111

Candidate Starts for Burwell21_63:

(59, 42280), (Start: 111 @42397 has 216 MA's), (159, 42556), (197, 42697), (218, 42742),

Gene: Bush_42 Start: 25748, Stop: 26125, Start Num: 107

Candidate Starts for Bush_42:

(Start: 107 @25748 has 9 MA's), (138, 25811), (145, 25838), (160, 25904), (188, 26012), (190, 26018), (196, 26039), (227, 26114),

Gene: BuzzLyseyear_71 Start: 43599, Stop: 43961, Start Num: 111

Candidate Starts for BuzzLyseyear_71:

(Start: 111 @43599 has 216 MA's), (159, 43758), (197, 43899), (200, 43902), (218, 43944),

Gene: ByChance_58 Start: 38456, Stop: 38818, Start Num: 111

Candidate Starts for ByChance_58:

(Start: 111 @38456 has 216 MA's), (159, 38615), (165, 38630), (197, 38756), (218, 38801),

Gene: Byougenkin_65 Start: 42188, Stop: 42544, Start Num: 111

Candidate Starts for Byougenkin_65:

(Start: 111 @42188 has 216 MA's), (197, 42488), (200, 42491),

Gene: Cabrinians_66 Start: 42475, Stop: 42837, Start Num: 111

Candidate Starts for Cabrinians_66:

(Start: 111 @42475 has 216 MA's), (165, 42649), (197, 42775), (218, 42820),

Gene: Cactus_80 Start: 47986, Stop: 48303, Start Num: 121

Candidate Starts for Cactus_80:

(43, 47803), (Start: 121 @47986 has 157 MA's), (160, 48127),

Gene: Cafasso_107 Start: 60484, Stop: 60873, Start Num: 118

Candidate Starts for Cafasso_107:

(7, 60097), (10, 60109), (Start: 118 @60484 has 7 MA's), (133, 60517), (139, 60538), (176, 60685), (185, 60715),

Gene: Camara_30 Start: 20839, Stop: 20519, Start Num: 118

Candidate Starts for Camara_30:

(2, 21274), (19, 21124), (65, 20929), (Start: 91 @20872 has 15 MA's), (Start: 118 @20839 has 7 MA's), (148, 20743),

Gene: Caprice_64 Start: 39435, Stop: 39788, Start Num: 93

Candidate Starts for Caprice_64:

(Start: 93 @39435 has 17 MA's), (109, 39462), (155, 39597), (169, 39627), (178, 39678), (180, 39684), (184, 39699), (190, 39717), (197, 39741), (199, 39744),

Gene: CaptainTrips_63 Start: 42210, Stop: 42572, Start Num: 111
Candidate Starts for CaptainTrips_63:
(59, 42093), (Start: 111 @42210 has 216 MA's), (159, 42369), (197, 42510), (218, 42555),

Gene: Carrillo_43 Start: 25721, Stop: 26098, Start Num: 107
Candidate Starts for Carrillo_43:
(Start: 107 @25721 has 9 MA's), (138, 25784), (145, 25811), (158, 25871), (188, 25985), (190, 25991),
(227, 26087),

Gene: Catfish_49 Start: 34051, Stop: 34401, Start Num: 113
Candidate Starts for Catfish_49:
(Start: 113 @34051 has 13 MA's), (130, 34084), (152, 34174), (157, 34198), (188, 34324), (210,
34384),

Gene: Cepens_52 Start: 43922, Stop: 44263, Start Num: 111
Candidate Starts for Cepens_52:
(Start: 111 @43922 has 216 MA's), (137, 43976), (140, 43991), (144, 44009), (160, 44075), (167,
44093), (177, 44147), (189, 44192), (197, 44213), (207, 44237), (208, 44240),

Gene: Cerasum_62 Start: 39166, Stop: 39528, Start Num: 111
Candidate Starts for Cerasum_62:
(Start: 111 @39166 has 216 MA's), (159, 39325), (172, 39370), (197, 39466), (200, 39469), (218,
39511),

Gene: Che8_70 Start: 45095, Stop: 45457, Start Num: 111
Candidate Starts for Che8_70:
(Start: 111 @45095 has 216 MA's), (159, 45254), (197, 45395), (200, 45398), (218, 45440),

Gene: Che9d_75 Start: 42864, Stop: 43220, Start Num: 111
Candidate Starts for Che9d_75:
(Start: 111 @42864 has 216 MA's), (159, 43023), (197, 43164), (200, 43167),

Gene: CheeseTouch_74 Start: 39429, Stop: 39758, Start Num: 121
Candidate Starts for CheeseTouch_74:
(Start: 121 @39429 has 157 MA's), (154, 39543), (159, 39564), (180, 39648), (187, 39672), (201,
39711), (211, 39738), (218, 39750),

Gene: Chevrolet_70 Start: 42633, Stop: 42995, Start Num: 111
Candidate Starts for Chevrolet_70:
(Start: 111 @42633 has 216 MA's), (197, 42933), (200, 42936), (218, 42978),

Gene: ChosenOne_77 Start: 47986, Stop: 48303, Start Num: 121
Candidate Starts for ChosenOne_77:
(43, 47803), (Start: 121 @47986 has 157 MA's), (160, 48127),

Gene: ChotaBhai_77 Start: 48310, Stop: 48627, Start Num: 121
Candidate Starts for ChotaBhai_77:
(43, 48127), (Start: 121 @48310 has 157 MA's), (Start: 132 @48334 has 1 MA's), (160, 48451),

Gene: Chuckly_68 Start: 42655, Stop: 43011, Start Num: 111
Candidate Starts for Chuckly_68:
(Start: 111 @42655 has 216 MA's), (197, 42955), (200, 42958),

Gene: Cinna_52 Start: 36948, Stop: 37283, Start Num: 103

Candidate Starts for Cinna_52:

(71, 36891), (Start: 97 @36936 has 5 MA's), (99, 36939), (Start: 103 @36948 has 5 MA's), (124, 36975), (154, 37083), (174, 37158), (180, 37188), (186, 37209), (200, 37248),

Gene: Cjw1_77 Start: 49683, Stop: 50000, Start Num: 121

Candidate Starts for Cjw1_77:

(43, 49500), (Start: 121 @49683 has 157 MA's), (160, 49824),

Gene: Clarkson_70 Start: 39837, Stop: 40190, Start Num: 93

Candidate Starts for Clarkson_70:

(Start: 93 @39837 has 17 MA's), (109, 39864), (155, 39999), (169, 40029), (178, 40080), (180, 40086), (184, 40101), (190, 40119), (197, 40143), (199, 40146),

Gene: Clautastrophe_65 Start: 46467, Stop: 46799, Start Num: 115

Candidate Starts for Clautastrophe_65:

(29, 46191), (30, 46203), (31, 46212), (35, 46236), (51, 46314), (69, 46362), (Start: 115 @46467 has 14 MA's), (159, 46611), (180, 46695), (190, 46728),

Gene: Clawz_89 Start: 57153, Stop: 57563, Start Num: 88

Candidate Starts for Clawz_89:

(64, 57102), (68, 57108), (Start: 72 @57114 has 1 MA's), (76, 57126), (Start: 88 @57153 has 1 MA's), (Start: 105 @57183 has 3 MA's), (188, 57444), (191, 57453), (219, 57522), (226, 57540),

Gene: Clifton_60 Start: 39647, Stop: 40009, Start Num: 111

Candidate Starts for Clifton_60:

(59, 39530), (Start: 111 @39647 has 216 MA's), (159, 39806), (197, 39947), (218, 39992),

Gene: Coco12_65 Start: 43223, Stop: 43585, Start Num: 111

Candidate Starts for Coco12_65:

(Start: 111 @43223 has 216 MA's), (159, 43382), (172, 43427), (197, 43523), (200, 43526), (218, 43568),

Gene: ColdSoup_93 Start: 57604, Stop: 57972, Start Num: 114

Candidate Starts for ColdSoup_93:

(32, 57379), (Start: 105 @57592 has 3 MA's), (Start: 114 @57604 has 3 MA's), (188, 57853), (191, 57862), (200, 57886), (203, 57892), (221, 57934),

Gene: Command613_79 Start: 49025, Stop: 49342, Start Num: 121

Candidate Starts for Command613_79:

(43, 48842), (Start: 121 @49025 has 157 MA's), (160, 49166),

Gene: Constella_107 Start: 63055, Stop: 63387, Start Num: 121

Candidate Starts for Constella_107:

(Start: 121 @63055 has 157 MA's), (153, 63166), (156, 63190), (209, 63370),

Gene: Contagion_73 Start: 47786, Stop: 48103, Start Num: 121

Candidate Starts for Contagion_73:

(43, 47603), (Start: 121 @47786 has 157 MA's), (160, 47927),

Gene: CookieDog_41 Start: 25721, Stop: 26098, Start Num: 107

Candidate Starts for CookieDog_41:

(Start: 107 @25721 has 9 MA's), (138, 25784), (145, 25811), (188, 25985), (190, 25991), (227, 26087),

Gene: Cookies_74 Start: 48167, Stop: 48484, Start Num: 121

Candidate Starts for Cookies_74:

(43, 47984), (Start: 121 @48167 has 157 MA's), (Start: 132 @48191 has 1 MA's), (160, 48308),

Gene: Coral_31 Start: 21357, Stop: 21004, Start Num: 91

Candidate Starts for Coral_31:

(41, 21483), (51, 21444), (Start: 91 @21357 has 15 MA's), (148, 21228), (159, 21183), (191, 21063),

Gene: Corazon_67 Start: 40031, Stop: 40384, Start Num: 93

Candidate Starts for Corazon_67:

(Start: 93 @40031 has 17 MA's), (109, 40058), (155, 40193), (169, 40223), (178, 40274), (180, 40280), (184, 40295), (190, 40313), (197, 40337), (199, 40340),

Gene: Cornie_63 Start: 40942, Stop: 41304, Start Num: 111

Candidate Starts for Cornie_63:

(Start: 111 @40942 has 216 MA's), (159, 41101), (197, 41242), (218, 41287),

Gene: Cornucopia_67 Start: 42579, Stop: 42941, Start Num: 111

Candidate Starts for Cornucopia_67:

(Start: 111 @42579 has 216 MA's), (172, 42783), (197, 42879), (200, 42882), (218, 42924),

Gene: Cosmo_77 Start: 48788, Stop: 49153, Start Num: 97

Candidate Starts for Cosmo_77:

(Start: 73 @48725 has 2 MA's), (Start: 97 @48788 has 5 MA's), (167, 48980), (198, 49100), (211, 49133),

Gene: Cote_33 Start: 21834, Stop: 21481, Start Num: 91

Candidate Starts for Cote_33:

(41, 21960), (51, 21921), (Start: 91 @21834 has 15 MA's), (148, 21705), (159, 21660), (191, 21540),

Gene: Courthouse_113 Start: 63779, Stop: 64099, Start Num: 120

Candidate Starts for Courthouse_113:

(Start: 120 @63779 has 22 MA's), (141, 63848), (152, 63890), (180, 64007),

Gene: Cracklewink_62 Start: 43613, Stop: 43963, Start Num: 98

Candidate Starts for Cracklewink_62:

(25, 43352), (44, 43460), (46, 43469), (70, 43541), (79, 43571), (Start: 98 @43613 has 6 MA's), (Start: 106 @43628 has 1 MA's), (126, 43661), (137, 43694), (147, 43736), (177, 43850), (196, 43916),

Gene: Cressida_55 Start: 36599, Stop: 36934, Start Num: 103

Candidate Starts for Cressida_55:

(8, 36272), (9, 36275), (12, 36281), (15, 36305), (17, 36314), (71, 36542), (Start: 97 @36587 has 5 MA's), (99, 36590), (Start: 103 @36599 has 5 MA's), (124, 36626), (151, 36716), (154, 36734), (174, 36809), (180, 36839), (188, 36866),

Gene: Crumble_60 Start: 38411, Stop: 38773, Start Num: 111

Candidate Starts for Crumble_60:

(Start: 111 @38411 has 216 MA's), (159, 38570), (165, 38585), (197, 38711), (218, 38756),

Gene: CrystalP_76 Start: 48970, Stop: 49287, Start Num: 121

Candidate Starts for CrystalP_76:

(43, 48787), (Start: 121 @48970 has 157 MA's), (160, 49111),

Gene: Cygnet_34 Start: 22172, Stop: 21816, Start Num: 94
Candidate Starts for Cygnet_34:
(41, 22316), (65, 22241), (94, 22172), (Start: 118 @22136 has 7 MA's), (136, 22097), (143, 22064),
(148, 22040),

Gene: Czyszczone1_78 Start: 48492, Stop: 48809, Start Num: 121
Candidate Starts for Czyszczone1_78:
(43, 48309), (Start: 121 @48492 has 157 MA's), (160, 48633),

Gene: D12_51 Start: 44470, Stop: 44811, Start Num: 111
Candidate Starts for D12_51:
(Start: 111 @44470 has 216 MA's), (137, 44524), (140, 44539), (144, 44557), (160, 44623), (167,
44641), (177, 44695), (189, 44740), (197, 44761), (207, 44785), (208, 44788),

Gene: DLane_60 Start: 40555, Stop: 40917, Start Num: 111
Candidate Starts for DLane_60:
(Start: 111 @40555 has 216 MA's), (197, 40855), (200, 40858), (218, 40900),

Gene: DRBy19_69 Start: 43907, Stop: 44263, Start Num: 111
Candidate Starts for DRBy19_69:
(59, 43790), (Start: 111 @43907 has 216 MA's), (165, 44081), (197, 44207), (200, 44210), (218,
44246),

Gene: DaWorst_65 Start: 42022, Stop: 42384, Start Num: 111
Candidate Starts for DaWorst_65:
(Start: 111 @42022 has 216 MA's), (159, 42181), (197, 42322), (218, 42367),

Gene: Daenerys_60 Start: 41329, Stop: 41685, Start Num: 111
Candidate Starts for Daenerys_60:
(62, 41224), (66, 41230), (87, 41284), (Start: 111 @41329 has 216 MA's), (Start: 128 @41362 has 1
MA's), (172, 41533), (197, 41629), (200, 41632),

Gene: Daikon_79 Start: 49113, Stop: 49430, Start Num: 121
Candidate Starts for Daikon_79:
(43, 48930), (Start: 121 @49113 has 157 MA's), (160, 49254),

Gene: Dallas_124 Start: 69105, Stop: 69437, Start Num: 121
Candidate Starts for Dallas_124:
(Start: 121 @69105 has 157 MA's), (153, 69216), (156, 69240), (209, 69420),

Gene: DanHam62_30 Start: 20838, Stop: 20518, Start Num: 118
Candidate Starts for DanHam62_30:
(2, 21273), (19, 21123), (65, 20928), (Start: 91 @20871 has 15 MA's), (Start: 118 @20838 has 7 MA's),
(148, 20742),

Gene: Dante_66 Start: 41796, Stop: 42161, Start Num: 111
Candidate Starts for Dante_66:
(Start: 111 @41796 has 216 MA's), (159, 41955), (197, 42096), (207, 42120),

Gene: Daob_33 Start: 21852, Stop: 21499, Start Num: 91
Candidate Starts for Daob_33:
(41, 21978), (51, 21939), (Start: 91 @21852 has 15 MA's), (148, 21723), (191, 21558),

Gene: Dardanus_46 Start: 31283, Stop: 31621, Start Num: 112

Candidate Starts for Dardanus_46:

(55, 31163), (Start: 107 @31274 has 9 MA's), (Start: 112 @31283 has 1 MA's), (152, 31409), (159, 31439), (167, 31460), (207, 31610),

Gene: DeadP_72 Start: 44907, Stop: 45269, Start Num: 111

Candidate Starts for DeadP_72:

(100, 44892), (Start: 111 @44907 has 216 MA's), (197, 45207), (200, 45210), (218, 45252),

Gene: Deb65_60 Start: 41299, Stop: 41661, Start Num: 111

Candidate Starts for Deb65_60:

(62, 41194), (66, 41200), (87, 41254), (Start: 111 @41299 has 216 MA's), (Start: 128 @41332 has 1 MA's), (197, 41599), (200, 41602), (218, 41644),

Gene: DelaGarza_58 Start: 33298, Stop: 33687, Start Num: 114

Candidate Starts for DelaGarza_58:

(Start: 114 @33298 has 3 MA's), (152, 33424), (177, 33532), (219, 33652),

Gene: Demsculpinboyz_78 Start: 42611, Stop: 42973, Start Num: 111

Candidate Starts for Demsculpinboyz_78:

(Start: 111 @42611 has 216 MA's), (172, 42815), (197, 42911), (218, 42956),

Gene: DillTech15_63 Start: 40922, Stop: 41284, Start Num: 111

Candidate Starts for DillTech15_63:

(100, 40907), (Start: 111 @40922 has 216 MA's), (197, 41222), (218, 41267),

Gene: DillyDally_47 Start: 29839, Stop: 30222, Start Num: 101

Candidate Starts for DillyDally_47:

(83, 29803), (101, 29839), (129, 29875), (154, 29980), (165, 30016), (170, 30034), (171, 30040), (172, 30049), (190, 30124), (212, 30184),

Gene: DinoDaryn_52 Start: 33048, Stop: 33431, Start Num: 113

Candidate Starts for DinoDaryn_52:

(Start: 113 @33048 has 13 MA's), (152, 33171), (201, 33354), (217, 33396),

Gene: DirtMcgirt_64 Start: 40554, Stop: 40916, Start Num: 111

Candidate Starts for DirtMcgirt_64:

(Start: 111 @40554 has 216 MA's), (159, 40713), (197, 40854), (200, 40857), (218, 40899),

Gene: DmpstrDiver_123 Start: 68024, Stop: 68353, Start Num: 120

Candidate Starts for DmpstrDiver_123:

(Start: 120 @68024 has 22 MA's), (141, 68093), (180, 68252), (209, 68336),

Gene: DoctorDiddles_76 Start: 48354, Stop: 48671, Start Num: 121

Candidate Starts for DoctorDiddles_76:

(43, 48171), (Start: 121 @48354 has 157 MA's), (Start: 132 @48378 has 1 MA's), (160, 48495),

Gene: DonTron_90 Start: 57720, Stop: 58088, Start Num: 114

Candidate Starts for DonTron_90:

(21, 57420), (32, 57495), (51, 57582), (Start: 105 @57708 has 3 MA's), (Start: 114 @57720 has 3 MA's), (188, 57969), (191, 57978), (200, 58002), (203, 58008), (221, 58050),

Gene: Donkeykong_68 Start: 44468, Stop: 44830, Start Num: 111

Candidate Starts for Donkeykong_68:

(Start: 111 @44468 has 216 MA's), (197, 44768), (200, 44771), (218, 44813),

Gene: Dorothy_64 Start: 42261, Stop: 42623, Start Num: 111

Candidate Starts for Dorothy_64:

(62, 42156), (66, 42162), (87, 42216), (Start: 111 @42261 has 216 MA's), (Start: 128 @42294 has 1 MA's), (172, 42465), (197, 42561), (200, 42564), (218, 42606),

Gene: DosHalletts_67 Start: 43303, Stop: 43665, Start Num: 111

Candidate Starts for DosHalletts_67:

(Start: 111 @43303 has 216 MA's), (159, 43462), (197, 43603), (200, 43606), (218, 43648),

Gene: DotProduct_60 Start: 40802, Stop: 41164, Start Num: 111

Candidate Starts for DotProduct_60:

(Start: 111 @40802 has 216 MA's), (197, 41102), (200, 41105), (218, 41147),

Gene: Doug_67 Start: 42635, Stop: 42997, Start Num: 111

Candidate Starts for Doug_67:

(Start: 111 @42635 has 216 MA's), (197, 42935), (218, 42980),

Gene: Dove_109 Start: 64018, Stop: 64350, Start Num: 121

Candidate Starts for Dove_109:

(Start: 121 @64018 has 157 MA's), (153, 64129), (156, 64153), (209, 64333),

Gene: DrDrey_77 Start: 49411, Stop: 49728, Start Num: 121

Candidate Starts for DrDrey_77:

(43, 49228), (Start: 121 @49411 has 157 MA's), (160, 49552),

Gene: Drago_62 Start: 40557, Stop: 40919, Start Num: 111

Candidate Starts for Drago_62:

(Start: 111 @40557 has 216 MA's), (159, 40716), (197, 40857), (200, 40860), (218, 40902),

Gene: Dropshot_41 Start: 25455, Stop: 25832, Start Num: 107

Candidate Starts for Dropshot_41:

(Start: 107 @25455 has 9 MA's), (138, 25518), (145, 25545), (188, 25719), (190, 25725), (196, 25746), (227, 25821),

Gene: Duke13_117 Start: 65442, Stop: 65774, Start Num: 120

Candidate Starts for Duke13_117:

(Start: 120 @65442 has 22 MA's), (141, 65511), (166, 65601), (167, 65604), (180, 65670),

Gene: Dumbo_77 Start: 47891, Stop: 48208, Start Num: 121

Candidate Starts for Dumbo_77:

(43, 47708), (Start: 121 @47891 has 157 MA's), (160, 48032),

Gene: DuncansLeg_66 Start: 46503, Stop: 46835, Start Num: 115

Candidate Starts for DuncansLeg_66:

(69, 46398), (Start: 93 @46464 has 17 MA's), (Start: 115 @46503 has 14 MA's), (154, 46626), (161, 46653), (180, 46731), (191, 46767), (207, 46812),

Gene: Dusk_74 Start: 48191, Stop: 48508, Start Num: 121

Candidate Starts for Dusk_74:

(43, 48008), (Start: 121 @48191 has 157 MA's), (160, 48332),

Gene: Easy2Say_78 Start: 49435, Stop: 49752, Start Num: 121

Candidate Starts for Easy2Say_78:

(43, 49252), (Start: 121 @49435 has 157 MA's), (160, 49576),

Gene: Ecliptus_75 Start: 44750, Stop: 45079, Start Num: 121

Candidate Starts for Ecliptus_75:

(Start: 121 @44750 has 157 MA's), (154, 44864), (159, 44885), (180, 44969), (187, 44993), (201, 45032), (211, 45059), (218, 45071),

Gene: Eish_68 Start: 42537, Stop: 42899, Start Num: 111

Candidate Starts for Eish_68:

(Start: 111 @42537 has 216 MA's), (159, 42696), (197, 42837), (200, 42840), (218, 42882),

Gene: Ejimix_117 Start: 69176, Stop: 69505, Start Num: 120

Candidate Starts for Ejimix_117:

(Start: 120 @69176 has 22 MA's), (141, 69245), (166, 69335), (167, 69338), (180, 69404), (209, 69488),

Gene: EleanorGeorge_67 Start: 43317, Stop: 43673, Start Num: 111

Candidate Starts for EleanorGeorge_67:

(Start: 111 @43317 has 216 MA's), (159, 43476), (197, 43617), (200, 43620),

Gene: Elite2014_76 Start: 47985, Stop: 48302, Start Num: 121

Candidate Starts for Elite2014_76:

(43, 47802), (Start: 121 @47985 has 157 MA's), (160, 48126),

Gene: Elph10_77 Start: 47990, Stop: 48307, Start Num: 121

Candidate Starts for Elph10_77:

(43, 47807), (Start: 121 @47990 has 157 MA's), (160, 48131),

Gene: Emma_67 Start: 42045, Stop: 42407, Start Num: 111

Candidate Starts for Emma_67:

(Start: 111 @42045 has 216 MA's), (Start: 132 @42087 has 1 MA's), (159, 42204), (197, 42345), (218, 42390),

Gene: Emmina_77 Start: 47892, Stop: 48209, Start Num: 121

Candidate Starts for Emmina_77:

(43, 47709), (Start: 121 @47892 has 157 MA's), (160, 48033),

Gene: Empress_64 Start: 42743, Stop: 43105, Start Num: 111

Candidate Starts for Empress_64:

(62, 42638), (66, 42644), (87, 42698), (Start: 111 @42743 has 216 MA's), (Start: 128 @42776 has 1 MA's), (197, 43043), (200, 43046), (218, 43088),

Gene: Enby_66 Start: 40833, Stop: 41195, Start Num: 111

Candidate Starts for Enby_66:

(Start: 111 @40833 has 216 MA's), (159, 40992), (197, 41133), (200, 41136), (218, 41178),

Gene: EniyanLRS_168 Start: 48527, Stop: 48892, Start Num: 97

Candidate Starts for EniyanLRS_168:

(Start: 73 @48464 has 2 MA's), (Start: 97 @48527 has 5 MA's), (167, 48719), (198, 48839), (211, 48872),

Gene: Eradicator_58 Start: 40449, Stop: 40811, Start Num: 111

Candidate Starts for Eradicator_58:

(Start: 111 @40449 has 216 MA's), (159, 40608), (197, 40749), (200, 40752), (218, 40794),

Gene: EricMillard_114 Start: 67411, Stop: 67743, Start Num: 120

Candidate Starts for EricMillard_114:

(Start: 120 @67411 has 22 MA's), (141, 67480), (166, 67570), (167, 67573), (180, 67639),

Gene: Estave1_70 Start: 44873, Stop: 45235, Start Num: 111

Candidate Starts for Estave1_70:

(Start: 111 @44873 has 216 MA's), (159, 45032), (165, 45047), (197, 45173), (200, 45176), (218, 45218),

Gene: Eureka_75 Start: 48456, Stop: 48773, Start Num: 121

Candidate Starts for Eureka_75:

(43, 48273), (Start: 121 @48456 has 157 MA's), (160, 48597),

Gene: FairyPath_77 Start: 49104, Stop: 49421, Start Num: 121

Candidate Starts for FairyPath_77:

(43, 48921), (Start: 121 @49104 has 157 MA's), (Start: 132 @49128 has 1 MA's), (160, 49245),

Gene: Faiyaz_65 Start: 45151, Stop: 45501, Start Num: 98

Candidate Starts for Faiyaz_65:

(70, 45079), (79, 45109), (Start: 98 @45151 has 6 MA's), (Start: 106 @45166 has 1 MA's), (Start: 118 @45184 has 7 MA's), (137, 45232), (139, 45238), (147, 45274), (172, 45358), (178, 45394),

Gene: Fancypants_68 Start: 43057, Stop: 43419, Start Num: 111

Candidate Starts for Fancypants_68:

(100, 43042), (Start: 111 @43057 has 216 MA's), (159, 43216), (197, 43357), (218, 43402),

Gene: Fastidio_66 Start: 41072, Stop: 41428, Start Num: 111

Candidate Starts for Fastidio_66:

(100, 41057), (Start: 111 @41072 has 216 MA's), (159, 41231), (197, 41372), (200, 41375),

Gene: FeliMaine_71 Start: 40079, Stop: 40432, Start Num: 93

Candidate Starts for FeliMaine_71:

(Start: 93 @40079 has 17 MA's), (109, 40106), (155, 40241), (169, 40271), (178, 40322), (180, 40328), (184, 40343), (190, 40361), (197, 40385), (199, 40388),

Gene: Filch_78 Start: 47917, Stop: 48234, Start Num: 121

Candidate Starts for Filch_78:

(43, 47734), (Start: 121 @47917 has 157 MA's), (160, 48058),

Gene: Filuzino_63 Start: 40860, Stop: 41222, Start Num: 111

Candidate Starts for Filuzino_63:

(Start: 111 @40860 has 216 MA's), (197, 41160), (200, 41163), (218, 41205),

Gene: Finnry_66 Start: 46731, Stop: 47063, Start Num: 115

Candidate Starts for Finnry_66:

(30, 46467), (31, 46476), (35, 46500), (51, 46578), (69, 46626), (Start: 115 @46731 has 14 MA's), (159, 46875), (180, 46959), (190, 46992),

Gene: FireRed_81 Start: 49479, Stop: 49796, Start Num: 121
Candidate Starts for FireRed_81:
(43, 49296), (Start: 121 @49479 has 157 MA's), (160, 49620),

Gene: Firehouse51_68 Start: 46363, Stop: 46704, Start Num: 111
Candidate Starts for Firehouse51_68:
(Start: 111 @46363 has 216 MA's), (172, 46567), (197, 46663), (200, 46666),

Gene: Flathead_66 Start: 42514, Stop: 42876, Start Num: 111
Candidate Starts for Flathead_66:
(Start: 111 @42514 has 216 MA's), (197, 42814), (200, 42817), (218, 42859),

Gene: Florinda_76 Start: 43974, Stop: 44336, Start Num: 111
Candidate Starts for Florinda_76:
(Start: 111 @43974 has 216 MA's), (197, 44274), (200, 44277), (218, 44319),

Gene: Flypotenuse_73 Start: 47976, Stop: 48293, Start Num: 121
Candidate Starts for Flypotenuse_73:
(43, 47793), (Start: 121 @47976 has 157 MA's), (160, 48117),

Gene: FoghornLeghorn_71 Start: 46989, Stop: 47306, Start Num: 121
Candidate Starts for FoghornLeghorn_71:
(43, 46806), (Start: 121 @46989 has 157 MA's), (160, 47130),

Gene: Forrestell_81 Start: 49543, Stop: 49217, Start Num: 117
Candidate Starts for Forrestell_81:
(Start: 72 @49636 has 1 MA's), (Start: 117 @49543 has 2 MA's), (Start: 132 @49513 has 1 MA's), (133, 49510), (149, 49444), (165, 49399), (172, 49375), (182, 49321), (196, 49285), (220, 49234),

Gene: FreddyB_66 Start: 41323, Stop: 41679, Start Num: 111
Candidate Starts for FreddyB_66:
(Start: 111 @41323 has 216 MA's), (165, 41497), (197, 41623),

Gene: Fryberger_95 Start: 48138, Stop: 48464, Start Num: 123
Candidate Starts for Fryberger_95:
(Start: 123 @48138 has 4 MA's), (147, 48219), (172, 48303), (179, 48342), (191, 48381),

Gene: GAL1_54 Start: 37553, Stop: 37900, Start Num: 121
Candidate Starts for GAL1_54:
(90, 37502), (Start: 121 @37553 has 157 MA's), (Start: 128 @37574 has 1 MA's), (135, 37592), (137, 37601), (152, 37676), (167, 37727), (179, 37790), (180, 37793), (188, 37823), (200, 37853), (211, 37880), (218, 37892),

Gene: GUmbie_63 Start: 41676, Stop: 42038, Start Num: 111
Candidate Starts for GUmbie_63:
(Start: 111 @41676 has 216 MA's), (159, 41835), (197, 41976), (200, 41979), (218, 42021),

Gene: Gage_79 Start: 48769, Stop: 49086, Start Num: 121
Candidate Starts for Gage_79:
(43, 48586), (Start: 121 @48769 has 157 MA's), (160, 48910),

Gene: Gaia_85 Start: 50308, Stop: 50631, Start Num: 121

Candidate Starts for Gaia_85:

(Start: 121 @50308 has 157 MA's), (140, 50371), (200, 50596), (201, 50599),

Gene: Galactic_64 Start: 41833, Stop: 42195, Start Num: 111

Candidate Starts for Galactic_64:

(Start: 111 @41833 has 216 MA's), (159, 41992), (197, 42133), (218, 42178),

Gene: Gandalph_68 Start: 42720, Stop: 43082, Start Num: 111

Candidate Starts for Gandalph_68:

(59, 42603), (Start: 111 @42720 has 216 MA's), (159, 42879), (197, 43020), (200, 43023), (218, 43065),

Gene: Gator_75 Start: 48822, Stop: 49139, Start Num: 121

Candidate Starts for Gator_75:

(43, 48639), (Start: 121 @48822 has 157 MA's), (160, 48963),

Gene: Gattaca_67 Start: 39225, Stop: 39578, Start Num: 93

Candidate Starts for Gattaca_67:

(Start: 93 @39225 has 17 MA's), (109, 39252), (155, 39387), (169, 39417), (178, 39468), (180, 39474), (184, 39489), (190, 39507), (197, 39531), (199, 39534),

Gene: Gemini_82 Start: 49286, Stop: 49603, Start Num: 121

Candidate Starts for Gemini_82:

(43, 49103), (Start: 121 @49286 has 157 MA's), (160, 49427),

Gene: Geralt_60 Start: 41298, Stop: 41660, Start Num: 111

Candidate Starts for Geralt_60:

(62, 41193), (66, 41199), (87, 41253), (Start: 111 @41298 has 216 MA's), (Start: 128 @41331 has 1 MA's), (197, 41598), (200, 41601), (218, 41643),

Gene: GigiOuiOui_61 Start: 40822, Stop: 41184, Start Num: 111

Candidate Starts for GigiOuiOui_61:

(Start: 111 @40822 has 216 MA's), (197, 41122), (200, 41125), (218, 41167),

Gene: Gilgamesh_151 Start: 125936, Stop: 126292, Start Num: 111

Candidate Starts for Gilgamesh_151:

(80, 125873), (Start: 111 @125936 has 216 MA's), (Start: 128 @125972 has 1 MA's), (149, 126053), (152, 126065), (167, 126116), (180, 126182), (200, 126242), (206, 126260), (213, 126275),

Gene: Gingerbug_57 Start: 33770, Stop: 34138, Start Num: 114

Candidate Starts for Gingerbug_57:

(Start: 114 @33770 has 3 MA's), (134, 33791), (152, 33872), (177, 33980),

Gene: Girafales_73 Start: 43765, Stop: 44127, Start Num: 111

Candidate Starts for Girafales_73:

(Start: 111 @43765 has 216 MA's), (197, 44065), (200, 44068), (218, 44110),

Gene: Girr_63 Start: 41692, Stop: 42054, Start Num: 111

Candidate Starts for Girr_63:

(Start: 111 @41692 has 216 MA's), (197, 41992), (218, 42037),

Gene: Glexan_76 Start: 49106, Stop: 49423, Start Num: 121
Candidate Starts for Glexan_76:
(43, 48923), (Start: 121 @49106 has 157 MA's), (160, 49247),

Gene: Glotell_32 Start: 21028, Stop: 20675, Start Num: 91
Candidate Starts for Glotell_32:
(2, 21430), (19, 21280), (65, 21085), (Start: 91 @21028 has 15 MA's), (Start: 118 @20995 has 7 MA's),
(148, 20899),

Gene: GodPhather_53 Start: 44710, Stop: 45051, Start Num: 111
Candidate Starts for GodPhather_53:
(Start: 111 @44710 has 216 MA's), (137, 44764), (140, 44779), (144, 44797), (160, 44863), (167,
44881), (177, 44935), (189, 44980), (197, 45001), (207, 45025), (208, 45028),

Gene: Goib_52 Start: 33585, Stop: 33968, Start Num: 113
Candidate Starts for Goib_52:
(Start: 113 @33585 has 13 MA's), (152, 33708), (201, 33891), (217, 33933),

Gene: Goku_75 Start: 48185, Stop: 48502, Start Num: 121
Candidate Starts for Goku_75:
(43, 48002), (Start: 121 @48185 has 157 MA's), (160, 48326),

Gene: GoldenSpark_81 Start: 48769, Stop: 49086, Start Num: 121
Candidate Starts for GoldenSpark_81:
(43, 48586), (Start: 121 @48769 has 157 MA's), (160, 48910),

Gene: Goldilocks_80 Start: 48267, Stop: 48584, Start Num: 121
Candidate Starts for Goldilocks_80:
(43, 48084), (Start: 121 @48267 has 157 MA's), (160, 48408),

Gene: Gonephishing_112 Start: 63185, Stop: 63505, Start Num: 120
Candidate Starts for Gonephishing_112:
(Start: 120 @63185 has 22 MA's), (141, 63254), (152, 63296), (180, 63413),

Gene: GooberAzure_80 Start: 48769, Stop: 49086, Start Num: 121
Candidate Starts for GooberAzure_80:
(43, 48586), (Start: 121 @48769 has 157 MA's), (160, 48910),

Gene: GoongGoong_66 Start: 39024, Stop: 39377, Start Num: 93
Candidate Starts for GoongGoong_66:
(Start: 93 @39024 has 17 MA's), (109, 39051), (155, 39186), (169, 39216), (178, 39267), (180, 39273),
(184, 39288), (190, 39306), (197, 39330), (199, 39333),

Gene: Gorge_69 Start: 43618, Stop: 43980, Start Num: 111
Candidate Starts for Gorge_69:
(Start: 111 @43618 has 216 MA's), (159, 43777), (197, 43918), (200, 43921), (218, 43963),

Gene: Grimmer_75 Start: 43862, Stop: 44218, Start Num: 111
Candidate Starts for Grimmer_75:
(Start: 111 @43862 has 216 MA's), (197, 44162),

Gene: Guey18_100 Start: 49458, Stop: 49784, Start Num: 123
Candidate Starts for Guey18_100:

(Start: 123 @49458 has 4 MA's), (147, 49539), (172, 49623), (179, 49662), (191, 49701),

Gene: Guppsters_66 Start: 41977, Stop: 42339, Start Num: 111

Candidate Starts for Guppsters_66:

(Start: 111 @41977 has 216 MA's), (159, 42136), (197, 42277), (200, 42280), (218, 42322),

Gene: Guzman_41 Start: 25719, Stop: 26096, Start Num: 107

Candidate Starts for Guzman_41:

(Start: 107 @25719 has 9 MA's), (138, 25782), (188, 25983), (190, 25989), (196, 26010), (227, 26085),

Gene: Hades_66 Start: 42692, Stop: 43054, Start Num: 111

Candidate Starts for Hades_66:

(Start: 111 @42692 has 216 MA's), (159, 42851), (197, 42992), (200, 42995), (218, 43037),

Gene: Halley_125 Start: 69492, Stop: 69821, Start Num: 120

Candidate Starts for Halley_125:

(Start: 120 @69492 has 22 MA's), (141, 69561), (166, 69651), (167, 69654), (180, 69720), (209, 69804),

Gene: HamCheese_29 Start: 20823, Stop: 20503, Start Num: 118

Candidate Starts for HamCheese_29:

(2, 21258), (19, 21108), (65, 20913), (Start: 91 @20856 has 15 MA's), (Start: 118 @20823 has 7 MA's), (148, 20727),

Gene: Hamulus_65 Start: 42334, Stop: 42690, Start Num: 111

Candidate Starts for Hamulus_65:

(Start: 111 @42334 has 216 MA's), (197, 42634), (200, 42637),

Gene: HanKaySha_77 Start: 48070, Stop: 48387, Start Num: 121

Candidate Starts for HanKaySha_77:

(43, 47887), (Start: 121 @48070 has 157 MA's), (160, 48211),

Gene: HannahPhantana_32 Start: 21514, Stop: 21161, Start Num: 91

Candidate Starts for HannahPhantana_32:

(41, 21640), (51, 21601), (Start: 91 @21514 has 15 MA's), (148, 21385), (159, 21340), (191, 21220),

Gene: Harella_77 Start: 49622, Stop: 49939, Start Num: 121

Candidate Starts for Harella_77:

(43, 49439), (Start: 121 @49622 has 157 MA's), (160, 49763),

Gene: Harley_67 Start: 42941, Stop: 43297, Start Num: 111

Candidate Starts for Harley_67:

(Start: 111 @42941 has 216 MA's), (159, 43100), (165, 43115), (197, 43241), (200, 43244),

Gene: Hegedechwinu_65 Start: 41510, Stop: 41872, Start Num: 111

Candidate Starts for Hegedechwinu_65:

(59, 41393), (Start: 111 @41510 has 216 MA's), (159, 41669), (197, 41810), (200, 41813), (218, 41855),

Gene: Henry_75 Start: 48410, Stop: 48727, Start Num: 121

Candidate Starts for Henry_75:

(43, 48227), (Start: 121 @48410 has 157 MA's), (160, 48551),

Gene: Highbury_76 Start: 48058, Stop: 48375, Start Num: 121

Candidate Starts for Highbury_76:

(43, 47875), (Start: 121 @48058 has 157 MA's), (160, 48199),

Gene: Hilltopfarm_64 Start: 44853, Stop: 45203, Start Num: 98

Candidate Starts for Hilltopfarm_64:

(70, 44781), (79, 44811), (Start: 98 @44853 has 6 MA's), (Start: 106 @44868 has 1 MA's), (Start: 118 @44886 has 7 MA's), (137, 44934), (139, 44940), (147, 44976), (180, 45102),

Gene: Hlubikazi_61 Start: 39912, Stop: 40274, Start Num: 111

Candidate Starts for Hlubikazi_61:

(Start: 111 @39912 has 216 MA's), (197, 40212), (200, 40215), (218, 40257),

Gene: HokkenD_113 Start: 67777, Stop: 68151, Start Num: 96

Candidate Starts for HokkenD_113:

(Start: 91 @67768 has 15 MA's), (Start: 96 @67777 has 1 MA's), (142, 67885), (153, 67930), (209, 68134),

Gene: Holt_82 Start: 49183, Stop: 49500, Start Num: 121

Candidate Starts for Holt_82:

(43, 49000), (Start: 121 @49183 has 157 MA's), (160, 49324),

Gene: Hoonter_80 Start: 48769, Stop: 49086, Start Num: 121

Candidate Starts for Hoonter_80:

(43, 48586), (Start: 121 @48769 has 157 MA's), (160, 48910),

Gene: Hokey_77 Start: 48602, Stop: 48919, Start Num: 121

Candidate Starts for Hokey_77:

(43, 48419), (Start: 121 @48602 has 157 MA's), (160, 48743),

Gene: Horus_72 Start: 44321, Stop: 44650, Start Num: 121

Candidate Starts for Horus_72:

(63, 44207), (Start: 105 @44297 has 3 MA's), (Start: 121 @44321 has 157 MA's), (133, 44348), (154, 44435), (180, 44540), (187, 44564), (201, 44603), (211, 44630), (218, 44642),

Gene: HufflyPuff_80 Start: 49435, Stop: 49752, Start Num: 121

Candidate Starts for HufflyPuff_80:

(43, 49252), (Start: 121 @49435 has 157 MA's), (160, 49576),

Gene: Huffly_52 Start: 33048, Stop: 33431, Start Num: 113

Candidate Starts for Huffly_52:

(Start: 113 @33048 has 13 MA's), (152, 33171), (201, 33354), (217, 33396),

Gene: Hughesyang_122 Start: 68948, Stop: 69280, Start Num: 120

Candidate Starts for Hughesyang_122:

(Start: 120 @68948 has 22 MA's), (141, 69017), (180, 69176),

Gene: Hum25_55 Start: 30658, Stop: 30984, Start Num: 125

Candidate Starts for Hum25_55:

(50, 30499), (Start: 125 @30658 has 3 MA's), (152, 30763), (183, 30895),

Gene: Huphleuff_71 Start: 39642, Stop: 39995, Start Num: 93

Candidate Starts for Huphleuff_71:

(Start: 93 @39642 has 17 MA's), (109, 39669), (155, 39804), (169, 39834), (178, 39885), (180, 39891), (184, 39906), (190, 39924), (197, 39948), (199, 39951),

Gene: IHOP_75 Start: 48534, Stop: 48851, Start Num: 121
Candidate Starts for IHOP_75:
(43, 48351), (Start: 121 @48534 has 157 MA's), (160, 48675),

Gene: IbOuu_67 Start: 43348, Stop: 43710, Start Num: 111
Candidate Starts for IbOuu_67:
(62, 43243), (66, 43249), (87, 43303), (Start: 111 @43348 has 216 MA's), (Start: 128 @43381 has 1 MA's), (197, 43648), (200, 43651), (218, 43693),

Gene: lbhubesi_65 Start: 41957, Stop: 42313, Start Num: 111
Candidate Starts for lbhubesi_65:
(Start: 111 @41957 has 216 MA's), (197, 42257), (200, 42260),

Gene: lcee_78 Start: 48433, Stop: 48750, Start Num: 121
Candidate Starts for lcee_78:
(43, 48250), (Start: 121 @48433 has 157 MA's), (160, 48574),

Gene: Inca_74 Start: 47059, Stop: 47376, Start Num: 121
Candidate Starts for Inca_74:
(43, 46876), (Start: 121 @47059 has 157 MA's), (160, 47200),

Gene: Inventum_61 Start: 42492, Stop: 42821, Start Num: 128
Candidate Starts for Inventum_61:
(62, 42354), (66, 42360), (87, 42414), (Start: 111 @42459 has 216 MA's), (Start: 128 @42492 has 1 MA's), (172, 42663), (197, 42759), (200, 42762), (218, 42804),

Gene: IrishSherpFalk_66 Start: 43547, Stop: 43909, Start Num: 111
Candidate Starts for IrishSherpFalk_66:
(Start: 111 @43547 has 216 MA's), (197, 43847), (200, 43850), (218, 43892),

Gene: Jabbawokkie_80 Start: 44082, Stop: 44423, Start Num: 111
Candidate Starts for Jabbawokkie_80:
(100, 44067), (Start: 111 @44082 has 216 MA's), (197, 44382), (200, 44385),

Gene: Jakelyne_44 Start: 25830, Stop: 26207, Start Num: 107
Candidate Starts for Jakelyne_44:
(Start: 107 @25830 has 9 MA's), (145, 25920), (180, 26067), (188, 26094), (190, 26100), (201, 26130), (227, 26196),

Gene: JalFarm20_78 Start: 46016, Stop: 46372, Start Num: 111
Candidate Starts for JalFarm20_78:
(Start: 111 @46016 has 216 MA's), (197, 46316), (200, 46319),

Gene: James_69 Start: 43743, Stop: 44105, Start Num: 111
Candidate Starts for James_69:
(Start: 111 @43743 has 216 MA's), (159, 43902), (197, 44043), (200, 44046), (218, 44088),

Gene: Jant_69 Start: 43594, Stop: 43950, Start Num: 111
Candidate Starts for Jant_69:
(Start: 111 @43594 has 216 MA's), (197, 43894), (200, 43897),

Gene: JeTaime_77 Start: 49251, Stop: 49568, Start Num: 121

Candidate Starts for JeTaime_77:

(43, 49068), (Start: 121 @49251 has 157 MA's), (160, 49392),

Gene: Jeon_52 Start: 44452, Stop: 44793, Start Num: 111

Candidate Starts for Jeon_52:

(Start: 111 @44452 has 216 MA's), (137, 44506), (140, 44521), (144, 44539), (160, 44605), (167, 44623), (177, 44677), (189, 44722), (197, 44743), (207, 44767), (208, 44770),

Gene: Jinglebell_71 Start: 45318, Stop: 45680, Start Num: 111

Candidate Starts for Jinglebell_71:

(Start: 111 @45318 has 216 MA's), (172, 45522), (197, 45618), (218, 45663),

Gene: Jobypre_66 Start: 46467, Stop: 46799, Start Num: 115

Candidate Starts for Jobypre_66:

(29, 46191), (30, 46203), (31, 46212), (35, 46236), (51, 46314), (69, 46362), (Start: 115 @46467 has 14 MA's), (159, 46611), (180, 46695), (190, 46728),

Gene: JoeyJr_61 Start: 41497, Stop: 41853, Start Num: 111

Candidate Starts for JoeyJr_61:

(62, 41392), (66, 41398), (87, 41452), (Start: 111 @41497 has 216 MA's), (Start: 128 @41530 has 1 MA's), (172, 41701), (197, 41797), (200, 41800),

Gene: JoieB_70 Start: 40075, Stop: 40428, Start Num: 93

Candidate Starts for JoieB_70:

(Start: 93 @40075 has 17 MA's), (109, 40102), (155, 40237), (169, 40267), (178, 40318), (180, 40324), (184, 40339), (190, 40357), (197, 40381), (199, 40384),

Gene: Jollymon_90 Start: 57592, Stop: 57972, Start Num: 105

Candidate Starts for Jollymon_90:

(32, 57379), (Start: 105 @57592 has 3 MA's), (Start: 114 @57604 has 3 MA's), (188, 57853), (191, 57862), (200, 57886), (203, 57892), (221, 57934),

Gene: Jubie_65 Start: 46602, Stop: 46934, Start Num: 115

Candidate Starts for Jubie_65:

(29, 46326), (30, 46338), (31, 46347), (35, 46371), (51, 46449), (69, 46497), (Start: 115 @46602 has 14 MA's), (159, 46746), (180, 46830), (190, 46863),

Gene: Juice456_66 Start: 43972, Stop: 44328, Start Num: 111

Candidate Starts for Juice456_66:

(Start: 111 @43972 has 216 MA's), (197, 44272), (200, 44275),

Gene: JuicyJay_120 Start: 70726, Stop: 71058, Start Num: 121

Candidate Starts for JuicyJay_120:

(Start: 121 @70726 has 157 MA's), (153, 70837), (156, 70861), (209, 71041),

Gene: Juniper1_65 Start: 42735, Stop: 43091, Start Num: 111

Candidate Starts for Juniper1_65:

(Start: 102 @42720 has 1 MA's), (Start: 111 @42735 has 216 MA's), (172, 42939), (197, 43035), (200, 43038),

Gene: Juno112_29 Start: 20872, Stop: 20519, Start Num: 91

Candidate Starts for Juno112_29:

(2, 21274), (19, 21124), (65, 20929), (Start: 91 @20872 has 15 MA's), (Start: 118 @20839 has 7 MA's), (148, 20743),

Gene: JustASigh_98 Start: 55410, Stop: 55766, Start Num: 127

Candidate Starts for JustASigh_98:

(86, 55332), (Start: 113 @55383 has 13 MA's), (Start: 127 @55410 has 1 MA's), (137, 55437), (150, 55491), (156, 55521), (159, 55533), (161, 55539), (188, 55644), (190, 55650), (205, 55689), (229, 55755),

Gene: KHumphrey_30 Start: 20837, Stop: 20517, Start Num: 118

Candidate Starts for KHumphrey_30:

(1, 21422), (2, 21272), (19, 21122), (65, 20927), (Start: 91 @20870 has 15 MA's), (Start: 118 @20837 has 7 MA's), (148, 20741),

Gene: Kalah2_114 Start: 67637, Stop: 67966, Start Num: 120

Candidate Starts for Kalah2_114:

(Start: 120 @67637 has 22 MA's), (141, 67706), (180, 67865), (209, 67949),

Gene: Kanye_74 Start: 48115, Stop: 48432, Start Num: 121

Candidate Starts for Kanye_74:

(43, 47932), (Start: 121 @48115 has 157 MA's), (160, 48256),

Gene: Karhdo_64 Start: 43305, Stop: 43667, Start Num: 111

Candidate Starts for Karhdo_64:

(Start: 111 @43305 has 216 MA's), (159, 43464), (197, 43605), (218, 43650),

Gene: Keelan_96 Start: 49018, Stop: 49347, Start Num: 113

Candidate Starts for Keelan_96:

(Start: 113 @49018 has 13 MA's), (147, 49114), (172, 49198), (179, 49237),

Gene: Kenuha5_63 Start: 41295, Stop: 41651, Start Num: 111

Candidate Starts for Kenuha5_63:

(Start: 111 @41295 has 216 MA's), (159, 41454), (197, 41595), (200, 41598), (218, 41634),

Gene: Kepler_32 Start: 21801, Stop: 21448, Start Num: 91

Candidate Starts for Kepler_32:

(41, 21927), (51, 21888), (Start: 91 @21801 has 15 MA's), (148, 21672), (191, 21507),

Gene: Kersh_67 Start: 44741, Stop: 45097, Start Num: 111

Candidate Starts for Kersh_67:

(Start: 111 @44741 has 216 MA's), (159, 44900), (197, 45041), (200, 45044),

Gene: Khuang_54 Start: 31611, Stop: 31976, Start Num: 125

Candidate Starts for Khuang_54:

(Start: 125 @31611 has 3 MA's), (164, 31761), (190, 31872), (194, 31887),

Gene: Kimberlium_70 Start: 44253, Stop: 44594, Start Num: 111

Candidate Starts for Kimberlium_70:

(Start: 111 @44253 has 216 MA's), (197, 44553), (200, 44556),

Gene: Kimchi_81 Start: 48772, Stop: 49089, Start Num: 121

Candidate Starts for Kimchi_81:

(43, 48589), (Start: 121 @48772 has 157 MA's), (160, 48913),

Gene: KingMidas_65 Start: 43159, Stop: 43521, Start Num: 111

Candidate Starts for KingMidas_65:

(62, 43054), (66, 43060), (87, 43114), (Start: 111 @43159 has 216 MA's), (Start: 128 @43192 has 1 MA's), (172, 43363), (197, 43459), (200, 43462), (218, 43504),

Gene: Kingsley_63 Start: 41956, Stop: 42318, Start Num: 111

Candidate Starts for Kingsley_63:

(Start: 111 @41956 has 216 MA's), (159, 42115), (172, 42160), (197, 42256), (200, 42259), (218, 42301),

Gene: KingstonB_93 Start: 57137, Stop: 57505, Start Num: 114

Candidate Starts for KingstonB_93:

(21, 56837), (32, 56912), (51, 56999), (Start: 105 @57125 has 3 MA's), (Start: 114 @57137 has 3 MA's), (188, 57386), (191, 57395), (200, 57419), (203, 57425), (221, 57467),

Gene: Klein_119 Start: 65994, Stop: 66323, Start Num: 120

Candidate Starts for Klein_119:

(Start: 120 @65994 has 22 MA's), (141, 66063), (166, 66153), (167, 66156), (180, 66222), (209, 66306),

Gene: Koella_59 Start: 38373, Stop: 38735, Start Num: 111

Candidate Starts for Koella_59:

(Start: 111 @38373 has 216 MA's), (165, 38547), (197, 38673), (218, 38718),

Gene: Kostya_77 Start: 48633, Stop: 48950, Start Num: 121

Candidate Starts for Kostya_77:

(43, 48450), (Start: 121 @48633 has 157 MA's), (160, 48774),

Gene: Kozie_51 Start: 36191, Stop: 36532, Start Num: 106

Candidate Starts for Kozie_51:

(38, 35999), (52, 36059), (85, 36149), (Start: 106 @36191 has 1 MA's), (180, 36437), (190, 36470), (200, 36497),

Gene: Krakatau_62 Start: 41145, Stop: 41507, Start Num: 111

Candidate Starts for Krakatau_62:

(Start: 111 @41145 has 216 MA's), (197, 41445), (200, 41448), (218, 41490),

Gene: KristaRAM_68 Start: 44341, Stop: 44697, Start Num: 111

Candidate Starts for KristaRAM_68:

(Start: 111 @44341 has 216 MA's), (197, 44641), (200, 44644),

Gene: Krypton555_67 Start: 46693, Stop: 47025, Start Num: 115

Candidate Starts for Krypton555_67:

(29, 46417), (30, 46429), (31, 46438), (35, 46462), (51, 46540), (69, 46588), (Start: 115 @46693 has 14 MA's), (159, 46837), (180, 46921), (190, 46954),

Gene: Kubulix_81 Start: 49967, Stop: 49641, Start Num: 121

Candidate Starts for Kubulix_81:

(Start: 121 @49967 has 157 MA's), (Start: 132 @49937 has 1 MA's), (133, 49934), (149, 49868), (165, 49823), (172, 49799), (182, 49745), (196, 49709), (220, 49658),

Gene: Kuleana_32 Start: 21579, Stop: 21160, Start Num: 72

Candidate Starts for Kuleana_32:

(34, 21714), (Start: 72 @21579 has 1 MA's), (89, 21528), (Start: 118 @21480 has 7 MA's), (143, 21408), (148, 21384), (191, 21219),

Gene: Kumao_62 Start: 44058, Stop: 44420, Start Num: 104

Candidate Starts for Kumao_62:

(20, 43764), (36, 43851), (45, 43896), (48, 43911), (57, 43950), (Start: 104 @44058 has 1 MA's), (Start: 118 @44082 has 7 MA's), (Start: 132 @44118 has 1 MA's), (133, 44121), (161, 44235), (190, 44346),

Gene: Kuwabara_72 Start: 44078, Stop: 44407, Start Num: 121

Candidate Starts for Kuwabara_72:

(Start: 121 @44078 has 157 MA's), (154, 44192), (159, 44213), (180, 44297), (187, 44321), (201, 44360), (211, 44387), (218, 44399),

Gene: LastJedi_59 Start: 39690, Stop: 40052, Start Num: 111

Candidate Starts for LastJedi_59:

(59, 39573), (Start: 111 @39690 has 216 MA's), (159, 39849), (197, 39990), (218, 40035),

Gene: Leona_29 Start: 20943, Stop: 20590, Start Num: 91

Candidate Starts for Leona_29:

(19, 21195), (65, 21000), (Start: 91 @20943 has 15 MA's), (Start: 118 @20910 has 7 MA's), (148, 20814), (161, 20763),

Gene: Leozinho_66 Start: 42196, Stop: 42552, Start Num: 116

Candidate Starts for Leozinho_66:

(Start: 116 @42196 has 3 MA's), (126, 42217), (Start: 128 @42223 has 1 MA's), (140, 42265), (166, 42367), (186, 42457), (197, 42490), (218, 42535),

Gene: Leozinho_64 Start: 41151, Stop: 41507, Start Num: 111

Candidate Starts for Leozinho_64:

(Start: 111 @41151 has 216 MA's), (159, 41310), (197, 41451), (200, 41454),

Gene: Leperchaun_58 Start: 40727, Stop: 41083, Start Num: 111

Candidate Starts for Leperchaun_58:

(62, 40622), (66, 40628), (87, 40682), (Start: 111 @40727 has 216 MA's), (Start: 128 @40760 has 1 MA's), (172, 40931), (197, 41027), (200, 41030),

Gene: Lesiram_59 Start: 33428, Stop: 33817, Start Num: 114

Candidate Starts for Lesiram_59:

(Start: 114 @33428 has 3 MA's), (152, 33554), (177, 33662), (219, 33782),

Gene: LilMoolah_64 Start: 42220, Stop: 42582, Start Num: 111

Candidate Starts for LilMoolah_64:

(59, 42103), (Start: 111 @42220 has 216 MA's), (159, 42379), (197, 42520), (218, 42565),

Gene: Lilac_79 Start: 48387, Stop: 48704, Start Num: 121

Candidate Starts for Lilac_79:

(43, 48204), (Start: 121 @48387 has 157 MA's), (160, 48528),

Gene: Lilbit_69 Start: 39805, Stop: 40158, Start Num: 93

Candidate Starts for Lilbit_69:

(Start: 93 @39805 has 17 MA's), (109, 39832), (155, 39967), (169, 39997), (178, 40048), (180, 40054), (184, 40069), (190, 40087), (197, 40111), (199, 40114),

Gene: Lilizi_78 Start: 48100, Stop: 48417, Start Num: 121

Candidate Starts for Lilizi_78:

(43, 47917), (Start: 121 @48100 has 157 MA's), (160, 48241),

Gene: Lilpickle_76 Start: 47985, Stop: 48302, Start Num: 121

Candidate Starts for Lilpickle_76:

(43, 47802), (Start: 121 @47985 has 157 MA's), (160, 48126),

Gene: LitninMcQueen_71 Start: 42944, Stop: 43273, Start Num: 121

Candidate Starts for LitninMcQueen_71:

(Start: 121 @42944 has 157 MA's), (180, 43163), (211, 43253), (218, 43265),

Gene: LittleE_122 Start: 67384, Stop: 67704, Start Num: 120

Candidate Starts for LittleE_122:

(Start: 120 @67384 has 22 MA's), (141, 67453), (152, 67495), (180, 67612),

Gene: LittleLaf_69 Start: 39534, Stop: 39887, Start Num: 93

Candidate Starts for LittleLaf_69:

(Start: 93 @39534 has 17 MA's), (109, 39561), (155, 39696), (169, 39726), (178, 39777), (180, 39783), (184, 39798), (190, 39816), (197, 39840), (199, 39843),

Gene: LittleShirley_65 Start: 42793, Stop: 43149, Start Num: 111

Candidate Starts for LittleShirley_65:

(Start: 111 @42793 has 216 MA's), (172, 42997), (197, 43093), (200, 43096),

Gene: LittleTokyo_32 Start: 21633, Stop: 21280, Start Num: 98

Candidate Starts for LittleTokyo_32:

(Start: 98 @21633 has 6 MA's), (143, 21528), (148, 21504),

Gene: Lizziana_71 Start: 43224, Stop: 43586, Start Num: 111

Candidate Starts for Lizziana_71:

(Start: 111 @43224 has 216 MA's), (159, 43383), (197, 43524), (200, 43527), (218, 43569),

Gene: Llama_70 Start: 45173, Stop: 45535, Start Num: 111

Candidate Starts for Llama_70:

(Start: 111 @45173 has 216 MA's), (172, 45377), (197, 45473), (218, 45518),

Gene: Llij_61 Start: 40711, Stop: 41073, Start Num: 111

Candidate Starts for Llij_61:

(Start: 111 @40711 has 216 MA's), (159, 40870), (197, 41011), (200, 41014), (218, 41056),

Gene: Lolly9_65 Start: 46290, Stop: 46622, Start Num: 115

Candidate Starts for Lolly9_65:

(Start: 115 @46290 has 14 MA's), (Start: 132 @46320 has 1 MA's), (154, 46413), (161, 46440), (180, 46518), (190, 46551), (207, 46599),

Gene: Lorde_65 Start: 39998, Stop: 40360, Start Num: 111

Candidate Starts for Lorde_65:

(Start: 111 @39998 has 216 MA's), (159, 40157), (197, 40298), (200, 40301), (218, 40343),

Gene: Losacky_44 Start: 25840, Stop: 26217, Start Num: 107
Candidate Starts for Losacky_44:
(Start: 107 @25840 has 9 MA's), (138, 25903), (188, 26104), (190, 26110), (196, 26131), (227, 26206),

Gene: Lucky2013_115 Start: 64045, Stop: 64419, Start Num: 91
Candidate Starts for Lucky2013_115:
(Start: 91 @64045 has 15 MA's), (Start: 96 @64054 has 1 MA's), (142, 64162), (153, 64207), (180, 64327),

Gene: Lumos_67 Start: 46464, Stop: 46796, Start Num: 115
Candidate Starts for Lumos_67:
(29, 46188), (30, 46200), (31, 46209), (35, 46233), (51, 46311), (69, 46359), (Start: 115 @46464 has 14 MA's), (159, 46608), (180, 46692), (190, 46725),

Gene: LunaBlu_67 Start: 42492, Stop: 42854, Start Num: 111
Candidate Starts for LunaBlu_67:
(Start: 111 @42492 has 216 MA's), (159, 42651), (197, 42792), (218, 42837),

Gene: LunaStella_65 Start: 42568, Stop: 42930, Start Num: 111
Candidate Starts for LunaStella_65:
(Start: 111 @42568 has 216 MA's), (197, 42868), (200, 42871), (218, 42913),

Gene: Lunar_32 Start: 21502, Stop: 21149, Start Num: 91
Candidate Starts for Lunar_32:
(41, 21628), (51, 21589), (Start: 91 @21502 has 15 MA's), (148, 21373), (159, 21328), (191, 21208),

Gene: MISSy_78 Start: 48491, Stop: 48808, Start Num: 121
Candidate Starts for MISSy_78:
(43, 48308), (Start: 121 @48491 has 157 MA's), (160, 48632),

Gene: MPhalcon_78 Start: 48484, Stop: 48801, Start Num: 121
Candidate Starts for MPhalcon_78:
(43, 48301), (Start: 121 @48484 has 157 MA's), (160, 48625),

Gene: MadMen_65 Start: 42619, Stop: 42975, Start Num: 111
Candidate Starts for MadMen_65:
(59, 42502), (Start: 111 @42619 has 216 MA's), (159, 42778), (197, 42919), (200, 42922),

Gene: MadMen_67 Start: 43664, Stop: 44020, Start Num: 116
Candidate Starts for MadMen_67:
(Start: 116 @43664 has 3 MA's), (126, 43685), (Start: 128 @43691 has 1 MA's), (140, 43733), (166, 43835), (186, 43925), (197, 43958), (218, 44003),

Gene: MadamMonkfish_77 Start: 47709, Stop: 48026, Start Num: 121
Candidate Starts for MadamMonkfish_77:
(43, 47526), (Start: 121 @47709 has 157 MA's), (160, 47850),

Gene: Madiba_66 Start: 41725, Stop: 42087, Start Num: 111
Candidate Starts for Madiba_66:
(Start: 111 @41725 has 216 MA's), (159, 41884), (197, 42025), (218, 42070),

Gene: Mahavrat_62 Start: 41431, Stop: 41787, Start Num: 111
Candidate Starts for Mahavrat_62:

(Start: 111 @41431 has 216 MA's), (197, 41731),

Gene: Manda_78 Start: 49571, Stop: 49888, Start Num: 121

Candidate Starts for Manda_78:

(43, 49388), (Start: 121 @49571 has 157 MA's), (160, 49712),

Gene: Mandlovu_61 Start: 39854, Stop: 40216, Start Num: 111

Candidate Starts for Mandlovu_61:

(Start: 111 @39854 has 216 MA's), (197, 40154), (200, 40157), (218, 40199),

Gene: Mantra_62 Start: 41207, Stop: 41563, Start Num: 111

Candidate Starts for Mantra_62:

(100, 41192), (Start: 111 @41207 has 216 MA's), (197, 41507), (200, 41510),

Gene: Maravista_67 Start: 44362, Stop: 44724, Start Num: 111

Candidate Starts for Maravista_67:

(Start: 111 @44362 has 216 MA's), (159, 44521), (165, 44536), (197, 44662), (218, 44707),

Gene: Margaery_51 Start: 36177, Stop: 36518, Start Num: 102

Candidate Starts for Margaery_51:

(9, 35859), (11, 35862), (13, 35868), (17, 35898), (22, 35925), (23, 35928), (71, 36120), (95, 36165),
(Start: 97 @36168 has 5 MA's), (Start: 102 @36177 has 1 MA's), (124, 36210), (151, 36300), (154, 36318), (174, 36393), (178, 36417), (180, 36423), (200, 36483),

Gene: Marker_67 Start: 42458, Stop: 42814, Start Num: 111

Candidate Starts for Marker_67:

(59, 42341), (Start: 111 @42458 has 216 MA's), (197, 42758), (200, 42761), (218, 42797),

Gene: Marshmallow_75 Start: 49264, Stop: 49581, Start Num: 121

Candidate Starts for Marshmallow_75:

(43, 49081), (Start: 121 @49264 has 157 MA's), (Start: 132 @49288 has 1 MA's), (160, 49405),

Gene: Martik_65 Start: 42396, Stop: 42752, Start Num: 111

Candidate Starts for Martik_65:

(59, 42279), (Start: 111 @42396 has 216 MA's), (159, 42555), (197, 42696), (200, 42699),

Gene: Marvin_65 Start: 39295, Stop: 39648, Start Num: 93

Candidate Starts for Marvin_65:

(Start: 93 @39295 has 17 MA's), (109, 39322), (155, 39457), (169, 39487), (178, 39538), (180, 39544),
(184, 39559), (190, 39577), (197, 39601), (199, 39604),

Gene: MaryV_77 Start: 48609, Stop: 48974, Start Num: 97

Candidate Starts for MaryV_77:

(Start: 73 @48546 has 2 MA's), (Start: 97 @48609 has 5 MA's), (167, 48801), (198, 48921), (211, 48954),

Gene: Mattes_69 Start: 43743, Stop: 44105, Start Num: 111

Candidate Starts for Mattes_69:

(Start: 111 @43743 has 216 MA's), (159, 43902), (197, 44043), (200, 44046), (218, 44088),

Gene: Matzah_54 Start: 37029, Stop: 37364, Start Num: 103

Candidate Starts for Matzah_54:

(Start: 97 @37017 has 5 MA's), (99, 37020), (Start: 103 @37029 has 5 MA's), (124, 37056), (142, 37113), (154, 37164), (174, 37239), (180, 37269), (186, 37290), (200, 37329),

Gene: Maxxinsta_79 Start: 48360, Stop: 48677, Start Num: 121

Candidate Starts for Maxxinsta_79:

(43, 48177), (Start: 121 @48360 has 157 MA's), (160, 48501),

Gene: Megabear_52 Start: 43843, Stop: 44184, Start Num: 111

Candidate Starts for Megabear_52:

(Start: 111 @43843 has 216 MA's), (137, 43897), (140, 43912), (144, 43930), (160, 43996), (167, 44014), (177, 44068), (189, 44113), (197, 44134), (207, 44158), (208, 44161),

Gene: Megan_52 Start: 39265, Stop: 39606, Start Num: 113

Candidate Starts for Megan_52:

(14, 38917), (23, 38971), (26, 38992), (27, 39001), (40, 39076), (42, 39088), (46, 39103), (53, 39136), (60, 39160), (70, 39175), (84, 39217), (Start: 113 @39265 has 13 MA's), (131, 39298), (178, 39493), (180, 39499), (188, 39526), (190, 39532), (195, 39550),

Gene: Melissauren88_63 Start: 41372, Stop: 41734, Start Num: 111

Candidate Starts for Melissauren88_63:

(Start: 111 @41372 has 216 MA's), (197, 41672), (200, 41675), (218, 41717),

Gene: MellowYellow_85 Start: 50209, Stop: 49883, Start Num: 117

Candidate Starts for MellowYellow_85:

(Start: 72 @50302 has 1 MA's), (Start: 117 @50209 has 2 MA's), (Start: 132 @50179 has 1 MA's), (133, 50176), (149, 50110), (165, 50065), (172, 50041), (182, 49987), (196, 49951), (220, 49900),

Gene: Melons_32 Start: 21502, Stop: 21149, Start Num: 91

Candidate Starts for Melons_32:

(41, 21628), (51, 21589), (Start: 91 @21502 has 15 MA's), (148, 21373), (159, 21328), (191, 21208),

Gene: MementoMori_53 Start: 36606, Stop: 36941, Start Num: 103

Candidate Starts for MementoMori_53:

(9, 36288), (11, 36291), (13, 36297), (17, 36327), (22, 36354), (23, 36357), (71, 36549), (Start: 97 @36594 has 5 MA's), (99, 36597), (Start: 103 @36606 has 5 MA's), (124, 36633), (154, 36741), (174, 36816), (180, 36846), (186, 36867), (200, 36906),

Gene: MenE_42 Start: 25720, Stop: 26097, Start Num: 107

Candidate Starts for MenE_42:

(Start: 107 @25720 has 9 MA's), (138, 25783), (145, 25810), (188, 25984), (190, 25990), (196, 26011), (227, 26086),

Gene: MiaZeal_118 Start: 64854, Stop: 65177, Start Num: 121

Candidate Starts for MiaZeal_118:

(Start: 121 @64854 has 157 MA's), (153, 64965), (180, 65085),

Gene: MilleniumForce_68 Start: 44060, Stop: 44416, Start Num: 111

Candidate Starts for MilleniumForce_68:

(Start: 111 @44060 has 216 MA's), (197, 44360), (200, 44363),

Gene: Mindy_76 Start: 47576, Stop: 47893, Start Num: 121

Candidate Starts for Mindy_76:

(43, 47393), (Start: 121 @47576 has 157 MA's), (160, 47717),

Gene: Minerva_120 Start: 67549, Stop: 67881, Start Num: 120

Candidate Starts for Minerva_120:

(Start: 120 @67549 has 22 MA's), (141, 67618), (180, 67777),

Gene: MiniLon_69 Start: 46291, Stop: 46623, Start Num: 115

Candidate Starts for MiniLon_69:

(Start: 115 @46291 has 14 MA's), (Start: 132 @46321 has 1 MA's), (154, 46414), (161, 46441), (180, 46519), (190, 46552), (207, 46600),

Gene: MiniMac_69 Start: 46319, Stop: 46621, Start Num: 132

Candidate Starts for MiniMac_69:

(Start: 115 @46289 has 14 MA's), (Start: 132 @46319 has 1 MA's), (154, 46412), (161, 46439), (180, 46517), (190, 46550), (207, 46598),

Gene: MinionDave_64 Start: 42746, Stop: 43108, Start Num: 111

Candidate Starts for MinionDave_64:

(59, 42629), (Start: 111 @42746 has 216 MA's), (159, 42905), (197, 43046), (218, 43091),

Gene: Miniwave_72 Start: 48029, Stop: 48346, Start Num: 121

Candidate Starts for Miniwave_72:

(43, 47846), (Start: 121 @48029 has 157 MA's), (160, 48170),

Gene: Minnie_68 Start: 43966, Stop: 44328, Start Num: 111

Candidate Starts for Minnie_68:

(59, 43849), (Start: 111 @43966 has 216 MA's), (159, 44125), (197, 44266), (218, 44311),

Gene: Misfit_78 Start: 49503, Stop: 49820, Start Num: 121

Candidate Starts for Misfit_78:

(43, 49320), (Start: 121 @49503 has 157 MA's), (160, 49644),

Gene: MisterCuddles_63 Start: 41692, Stop: 42054, Start Num: 111

Candidate Starts for MisterCuddles_63:

(Start: 111 @41692 has 216 MA's), (197, 41992), (218, 42037),

Gene: ModicumRichard_107 Start: 60796, Stop: 61155, Start Num: 132

Candidate Starts for ModicumRichard_107:

(78, 60703), (81, 60712), (Start: 118 @60769 has 7 MA's), (Start: 132 @60796 has 1 MA's), (133, 60799), (139, 60820), (147, 60856), (162, 60910), (185, 60997), (193, 61021),

Gene: Modragons_69 Start: 45162, Stop: 45524, Start Num: 111

Candidate Starts for Modragons_69:

(Start: 111 @45162 has 216 MA's), (172, 45366), (197, 45462), (218, 45507),

Gene: Moldemort_80 Start: 48588, Stop: 48905, Start Num: 121

Candidate Starts for Moldemort_80:

(43, 48405), (Start: 121 @48588 has 157 MA's), (160, 48729),

Gene: MooMoo_66 Start: 43589, Stop: 43945, Start Num: 116

Candidate Starts for MooMoo_66:

(Start: 116 @43589 has 3 MA's), (126, 43610), (Start: 128 @43616 has 1 MA's), (140, 43658), (152, 43712), (166, 43760), (181, 43838), (186, 43850), (197, 43883), (207, 43907), (223, 43937),

Gene: Moonbeam_64 Start: 41974, Stop: 42336, Start Num: 111

Candidate Starts for Moonbeam_64:

(Start: 111 @41974 has 216 MA's), (Start: 132 @42016 has 1 MA's), (159, 42133), (197, 42274), (218, 42319),

Gene: Morgana_114 Start: 62857, Stop: 63246, Start Num: 118

Candidate Starts for Morgana_114:

(6, 62464), (16, 62533), (24, 62569), (39, 62653), (Start: 118 @62857 has 7 MA's), (133, 62890), (139, 62911), (176, 63058), (185, 63088), (193, 63112),

Gene: MosMoris_66 Start: 39225, Stop: 39578, Start Num: 93

Candidate Starts for MosMoris_66:

(Start: 93 @39225 has 17 MA's), (109, 39252), (155, 39387), (169, 39417), (178, 39468), (180, 39474), (184, 39489), (190, 39507), (197, 39531), (199, 39534),

Gene: Mosby_73 Start: 47786, Stop: 48103, Start Num: 121

Candidate Starts for Mosby_73:

(43, 47603), (Start: 121 @47786 has 157 MA's), (160, 47927),

Gene: Mova_69 Start: 42229, Stop: 42585, Start Num: 111

Candidate Starts for Mova_69:

(Start: 111 @42229 has 216 MA's), (159, 42388), (197, 42529), (200, 42532), (218, 42568),

Gene: Mozy_75 Start: 44841, Stop: 45203, Start Num: 111

Candidate Starts for Mozy_75:

(100, 44826), (Start: 111 @44841 has 216 MA's), (159, 45000), (197, 45141), (218, 45186),

Gene: MrSmee_53 Start: 31291, Stop: 31644, Start Num: 125

Candidate Starts for MrSmee_53:

(Start: 125 @31291 has 3 MA's), (152, 31396), (218, 31612),

Gene: Ms6_62 Start: 37737, Stop: 38099, Start Num: 111

Candidate Starts for Ms6_62:

(Start: 111 @37737 has 216 MA's), (197, 38037), (200, 38040), (218, 38082),

Gene: MsGreen_66 Start: 46467, Stop: 46799, Start Num: 115

Candidate Starts for MsGreen_66:

(29, 46191), (30, 46203), (31, 46212), (35, 46236), (51, 46314), (69, 46362), (Start: 115 @46467 has 14 MA's), (159, 46611), (180, 46695), (190, 46728),

Gene: MulchExplorer_73 Start: 44252, Stop: 44593, Start Num: 111

Candidate Starts for MulchExplorer_73:

(Start: 111 @44252 has 216 MA's), (197, 44552), (200, 44555),

Gene: Murica_80 Start: 49435, Stop: 49752, Start Num: 121

Candidate Starts for Murica_80:

(43, 49252), (Start: 121 @49435 has 157 MA's), (160, 49576),

Gene: Murphy_77 Start: 48872, Stop: 49189, Start Num: 121

Candidate Starts for Murphy_77:

(43, 48689), (Start: 121 @48872 has 157 MA's), (160, 49013),

Gene: Mutaforma13_71 Start: 45673, Stop: 46035, Start Num: 111

Candidate Starts for Mutaforma13_71:
(Start: 111 @45673 has 216 MA's), (197, 45973), (218, 46018),

Gene: Myrale_77 Start: 49129, Stop: 49446, Start Num: 121
Candidate Starts for Myrale_77:
(43, 48946), (Start: 121 @49129 has 157 MA's), (160, 49270),

Gene: Nala_79 Start: 48993, Stop: 49310, Start Num: 121
Candidate Starts for Nala_79:
(43, 48810), (Start: 121 @48993 has 157 MA's), (160, 49134),

Gene: Nebkiss_84 Start: 48920, Stop: 49243, Start Num: 121
Candidate Starts for Nebkiss_84:
(Start: 121 @48920 has 157 MA's), (140, 48983), (200, 49208), (201, 49211),

Gene: NelitzaMV_75 Start: 48075, Stop: 48392, Start Num: 121
Candidate Starts for NelitzaMV_75:
(43, 47892), (Start: 121 @48075 has 157 MA's), (160, 48216),

Gene: Nicole72_53 Start: 39892, Stop: 40239, Start Num: 113
Candidate Starts for Nicole72_53:
(77, 39826), (84, 39844), (Start: 113 @39892 has 13 MA's), (172, 40084), (188, 40153), (190, 40159),

Gene: NihilNomen_125 Start: 68678, Stop: 69010, Start Num: 121
Candidate Starts for NihilNomen_125:
(Start: 121 @68678 has 157 MA's), (153, 68789), (156, 68813), (209, 68993),

Gene: Nimbo_59 Start: 41301, Stop: 41663, Start Num: 111
Candidate Starts for Nimbo_59:
(62, 41196), (66, 41202), (87, 41256), (Start: 111 @41301 has 216 MA's), (Start: 128 @41334 has 1 MA's), (197, 41601), (200, 41604), (218, 41646),

Gene: Nimrod_78 Start: 49696, Stop: 50013, Start Num: 121
Candidate Starts for Nimrod_78:
(43, 49513), (Start: 121 @49696 has 157 MA's), (160, 49837),

Gene: Nitzel_62 Start: 41489, Stop: 41851, Start Num: 111
Candidate Starts for Nitzel_62:
(Start: 111 @41489 has 216 MA's), (197, 41789), (200, 41792), (218, 41834),

Gene: Nivrat_62 Start: 42093, Stop: 42455, Start Num: 111
Candidate Starts for Nivrat_62:
(59, 41976), (Start: 111 @42093 has 216 MA's), (159, 42252), (197, 42393), (218, 42438),

Gene: NoSleep_78 Start: 48330, Stop: 48647, Start Num: 121
Candidate Starts for NoSleep_78:
(43, 48147), (Start: 121 @48330 has 157 MA's), (160, 48471),

Gene: NormanBulbieJr_65 Start: 42386, Stop: 42748, Start Num: 111
Candidate Starts for NormanBulbieJr_65:
(Start: 111 @42386 has 216 MA's), (165, 42560), (197, 42686), (218, 42731),

Gene: NyleyClemson_84 Start: 49827, Stop: 49501, Start Num: 117

Candidate Starts for NyleyClemson_84:

(Start: 72 @49920 has 1 MA's), (Start: 117 @49827 has 2 MA's), (Start: 132 @49797 has 1 MA's), (133, 49794), (149, 49728), (165, 49683), (172, 49659), (182, 49605), (196, 49569), (220, 49518),

Gene: ODay_78 Start: 45557, Stop: 45886, Start Num: 121

Candidate Starts for ODay_78:

(63, 45443), (Start: 105 @45533 has 3 MA's), (Start: 121 @45557 has 157 MA's), (133, 45584), (180, 45776), (211, 45866), (218, 45878),

Gene: ObLaDi_106 Start: 60168, Stop: 60557, Start Num: 118

Candidate Starts for ObLaDi_106:

(10, 59793), (28, 59892), (Start: 118 @60168 has 7 MA's), (133, 60201), (139, 60222), (176, 60369), (185, 60399), (193, 60423),

Gene: Ochi17_69 Start: 44769, Stop: 45131, Start Num: 111

Candidate Starts for Ochi17_69:

(Start: 111 @44769 has 216 MA's), (172, 44973), (197, 45069), (218, 45114),

Gene: Octobien14_72 Start: 45181, Stop: 45522, Start Num: 108

Candidate Starts for Octobien14_72:

(Start: 108 @45181 has 1 MA's), (147, 45283), (159, 45337), (180, 45421),

Gene: Odyssey395_85 Start: 50318, Stop: 49992, Start Num: 121

Candidate Starts for Odyssey395_85:

(Start: 121 @50318 has 157 MA's), (Start: 132 @50288 has 1 MA's), (133, 50285), (149, 50219), (165, 50174), (172, 50150), (182, 50096), (196, 50060), (220, 50009),

Gene: OfUltron_71 Start: 45318, Stop: 45680, Start Num: 111

Candidate Starts for OfUltron_71:

(Start: 111 @45318 has 216 MA's), (172, 45522), (197, 45618), (218, 45663),

Gene: Ogopogo_71 Start: 42797, Stop: 43153, Start Num: 111

Candidate Starts for Ogopogo_71:

(61, 42686), (Start: 111 @42797 has 216 MA's), (197, 43097), (200, 43100),

Gene: OldBen_63 Start: 42694, Stop: 43056, Start Num: 111

Candidate Starts for OldBen_63:

(62, 42589), (66, 42595), (87, 42649), (Start: 111 @42694 has 216 MA's), (Start: 128 @42727 has 1 MA's), (197, 42994), (200, 42997), (218, 43039),

Gene: OlympiaSaint_67 Start: 42685, Stop: 43047, Start Num: 111

Candidate Starts for OlympiaSaint_67:

(Start: 111 @42685 has 216 MA's), (159, 42844), (197, 42985), (200, 42988), (218, 43030),

Gene: Optimus_113 Start: 65945, Stop: 66277, Start Num: 120

Candidate Starts for Optimus_113:

(Start: 120 @65945 has 22 MA's), (141, 66014), (166, 66104), (167, 66107), (180, 66173),

Gene: OrionPax_76 Start: 48081, Stop: 48398, Start Num: 121

Candidate Starts for OrionPax_76:

(43, 47898), (Start: 121 @48081 has 157 MA's), (Start: 132 @48105 has 1 MA's), (160, 48222),

Gene: OtsoOtso_34 Start: 21366, Stop: 21013, Start Num: 91

Candidate Starts for OtsoOtso_34:

(41, 21492), (51, 21453), (Start: 91 @21366 has 15 MA's), (148, 21237), (159, 21192), (191, 21072),

Gene: Ovechkin_65 Start: 42688, Stop: 43050, Start Num: 111

Candidate Starts for Ovechkin_65:

(Start: 111 @42688 has 216 MA's), (197, 42988), (200, 42991), (218, 43033),

Gene: OwlsT2W_65 Start: 42020, Stop: 42376, Start Num: 111

Candidate Starts for OwlsT2W_65:

(Start: 111 @42020 has 216 MA's), (159, 42179), (197, 42320),

Gene: PHappiness_61 Start: 41273, Stop: 41629, Start Num: 111

Candidate Starts for PHappiness_61:

(62, 41168), (66, 41174), (87, 41228), (Start: 111 @41273 has 216 MA's), (Start: 128 @41306 has 1 MA's), (172, 41477), (197, 41573), (200, 41576),

Gene: PMC_62 Start: 42410, Stop: 42766, Start Num: 111

Candidate Starts for PMC_62:

(Start: 111 @42410 has 216 MA's), (197, 42710), (200, 42713),

Gene: PR_52 Start: 44447, Stop: 44788, Start Num: 111

Candidate Starts for PR_52:

(Start: 111 @44447 has 216 MA's), (137, 44501), (140, 44516), (144, 44534), (160, 44600), (167, 44618), (177, 44672), (189, 44717), (197, 44738), (207, 44762), (208, 44765),

Gene: Pacc40_59 Start: 40742, Stop: 41104, Start Num: 111

Candidate Starts for Pacc40_59:

(59, 40625), (Start: 111 @40742 has 216 MA's), (159, 40901), (197, 41042), (218, 41087),

Gene: Palpatine_79 Start: 49462, Stop: 49779, Start Num: 121

Candidate Starts for Palpatine_79:

(43, 49279), (Start: 121 @49462 has 157 MA's), (160, 49603),

Gene: Paperbeatsrock_76 Start: 48707, Stop: 49024, Start Num: 121

Candidate Starts for Paperbeatsrock_76:

(43, 48524), (Start: 121 @48707 has 157 MA's), (160, 48848),

Gene: Pat3_75 Start: 47239, Stop: 47556, Start Num: 121

Candidate Starts for Pat3_75:

(43, 47056), (Start: 121 @47239 has 157 MA's), (Start: 132 @47263 has 1 MA's), (160, 47380),

Gene: Petra64142_81 Start: 49926, Stop: 50243, Start Num: 121

Candidate Starts for Petra64142_81:

(43, 49743), (Start: 121 @49926 has 157 MA's), (160, 50067),

Gene: Phabuloso_75 Start: 43819, Stop: 44166, Start Num: 121

Candidate Starts for Phabuloso_75:

(67, 43705), (Start: 104 @43795 has 1 MA's), (Start: 121 @43819 has 157 MA's), (Start: 128 @43840 has 1 MA's), (135, 43858), (137, 43867), (152, 43942), (160, 43975), (167, 43993), (179, 44056), (180, 44059), (188, 44089), (200, 44119), (211, 44146), (218, 44158),

Gene: Phaja_75 Start: 48533, Stop: 48850, Start Num: 121

Candidate Starts for Phaja_75:

(43, 48350), (Start: 121 @48533 has 157 MA's), (160, 48674),

Gene: Phalconet_63 Start: 40623, Stop: 40985, Start Num: 111

Candidate Starts for Phalconet_63:

(Start: 111 @40623 has 216 MA's), (197, 40923), (200, 40926), (218, 40968),

Gene: Phanphagia_61 Start: 42234, Stop: 42596, Start Num: 111

Candidate Starts for Phanphagia_61:

(Start: 111 @42234 has 216 MA's), (197, 42534), (200, 42537), (218, 42579),

Gene: Pharsalus_74 Start: 48507, Stop: 48824, Start Num: 121

Candidate Starts for Pharsalus_74:

(43, 48324), (Start: 121 @48507 has 157 MA's), (160, 48648),

Gene: PhatBacter_81 Start: 49479, Stop: 49796, Start Num: 121

Candidate Starts for PhatBacter_81:

(43, 49296), (Start: 121 @49479 has 157 MA's), (160, 49620),

Gene: Phatniss_63 Start: 41806, Stop: 42168, Start Num: 111

Candidate Starts for Phatniss_63:

(Start: 111 @41806 has 216 MA's), (159, 41965), (197, 42106), (200, 42109), (218, 42151),

Gene: Phaux_79 Start: 49474, Stop: 49791, Start Num: 121

Candidate Starts for Phaux_79:

(43, 49291), (Start: 121 @49474 has 157 MA's), (160, 49615),

Gene: PhesterPhotato_65 Start: 41443, Stop: 41799, Start Num: 111

Candidate Starts for PhesterPhotato_65:

(Start: 111 @41443 has 216 MA's), (159, 41602), (197, 41743), (200, 41746),

Gene: PhillyJawn_42 Start: 25617, Stop: 25994, Start Num: 107

Candidate Starts for PhillyJawn_42:

(Start: 107 @25617 has 9 MA's), (138, 25680), (188, 25881), (190, 25887), (196, 25908), (227, 25983),

Gene: Philus_69 Start: 43883, Stop: 44239, Start Num: 111

Candidate Starts for Philus_69:

(59, 43766), (Start: 111 @43883 has 216 MA's), (165, 44057), (197, 44183), (200, 44186), (218, 44222),

Gene: Phingu_44 Start: 25833, Stop: 26210, Start Num: 107

Candidate Starts for Phingu_44:

(Start: 107 @25833 has 9 MA's), (138, 25896), (145, 25923), (188, 26097), (190, 26103), (227, 26199),

Gene: PhluffyCoco_30 Start: 20856, Stop: 20503, Start Num: 91

Candidate Starts for PhluffyCoco_30:

(2, 21258), (19, 21108), (65, 20913), (Start: 91 @20856 has 15 MA's), (Start: 118 @20823 has 7 MA's), (148, 20727),

Gene: Phoebus_124 Start: 70535, Stop: 70867, Start Num: 121

Candidate Starts for Phoebus_124:

(Start: 121 @70535 has 157 MA's), (153, 70646), (156, 70670), (209, 70850),

Gene: Phonegingi_41 Start: 25666, Stop: 26043, Start Num: 107

Candidate Starts for Phonegingi_41:

(Start: 107 @25666 has 9 MA's), (138, 25729), (145, 25756), (180, 25903), (188, 25930), (190, 25936), (201, 25966), (227, 26032),

Gene: Phrux_74 Start: 48070, Stop: 48387, Start Num: 121

Candidate Starts for Phrux_74:

(43, 47887), (Start: 121 @48070 has 157 MA's), (160, 48211),

Gene: Pickles13_40 Start: 25930, Stop: 26307, Start Num: 107

Candidate Starts for Pickles13_40:

(Start: 107 @25930 has 9 MA's), (145, 26020), (188, 26194), (190, 26200), (196, 26221), (227, 26296),

Gene: Pippy_64 Start: 41724, Stop: 42086, Start Num: 111

Candidate Starts for Pippy_64:

(Start: 111 @41724 has 216 MA's), (159, 41883), (165, 41898), (197, 42024), (218, 42069),

Gene: Pitbull_53 Start: 29779, Stop: 30105, Start Num: 125

Candidate Starts for Pitbull_53:

(71, 29674), (Start: 125 @29779 has 3 MA's), (152, 29884), (183, 30016),

Gene: Plumbus_68 Start: 42573, Stop: 42935, Start Num: 111

Candidate Starts for Plumbus_68:

(Start: 111 @42573 has 216 MA's), (197, 42873), (200, 42876), (218, 42918),

Gene: Pointis_81 Start: 49894, Stop: 49568, Start Num: 121

Candidate Starts for Pointis_81:

(Start: 121 @49894 has 157 MA's), (Start: 132 @49864 has 1 MA's), (133, 49861), (149, 49795), (165, 49750), (172, 49726), (182, 49672), (196, 49636), (220, 49585),

Gene: Poise_69 Start: 39121, Stop: 39474, Start Num: 93

Candidate Starts for Poise_69:

(Start: 93 @39121 has 17 MA's), (109, 39148), (155, 39283), (169, 39313), (178, 39364), (180, 39370), (184, 39385), (190, 39403), (197, 39427), (199, 39430),

Gene: Policronamos_80 Start: 49474, Stop: 49791, Start Num: 121

Candidate Starts for Policronamos_80:

(43, 49291), (Start: 121 @49474 has 157 MA's), (160, 49615),

Gene: Polka_31 Start: 21366, Stop: 21013, Start Num: 91

Candidate Starts for Polka_31:

(41, 21492), (51, 21453), (Start: 91 @21366 has 15 MA's), (148, 21237), (159, 21192), (191, 21072),

Gene: Polka14_64 Start: 42337, Stop: 42693, Start Num: 111

Candidate Starts for Polka14_64:

(62, 42232), (66, 42238), (87, 42292), (Start: 111 @42337 has 216 MA's), (Start: 128 @42370 has 1 MA's), (172, 42541), (197, 42637), (200, 42640),

Gene: Pollywog_66 Start: 43003, Stop: 43359, Start Num: 111

Candidate Starts for Pollywog_66:

(Start: 111 @43003 has 216 MA's), (159, 43162), (197, 43303), (200, 43306),

Gene: PopTart_59 Start: 40248, Stop: 40610, Start Num: 111

Candidate Starts for PopTart_59:

(Start: 111 @40248 has 216 MA's), (197, 40548), (200, 40551), (218, 40593),

Gene: Porky_76 Start: 47900, Stop: 48217, Start Num: 121

Candidate Starts for Porky_76:

(43, 47717), (Start: 121 @47900 has 157 MA's), (160, 48041),

Gene: Pound_112 Start: 66568, Stop: 66897, Start Num: 120

Candidate Starts for Pound_112:

(Start: 120 @66568 has 22 MA's), (141, 66637), (180, 66796), (209, 66880),

Gene: Pringar_68 Start: 39443, Stop: 39796, Start Num: 93

Candidate Starts for Pringar_68:

(Start: 93 @39443 has 17 MA's), (109, 39470), (155, 39605), (169, 39635), (178, 39686), (180, 39692), (184, 39707), (190, 39725), (197, 39749), (199, 39752),

Gene: Priscilla_65 Start: 42485, Stop: 42847, Start Num: 111

Candidate Starts for Priscilla_65:

(Start: 111 @42485 has 216 MA's), (165, 42659), (197, 42785), (218, 42830),

Gene: Pumpkin_80 Start: 49128, Stop: 49445, Start Num: 121

Candidate Starts for Pumpkin_80:

(43, 48945), (Start: 121 @49128 has 157 MA's), (160, 49269),

Gene: Pureglobe5_83 Start: 50341, Stop: 50015, Start Num: 117

Candidate Starts for Pureglobe5_83:

(Start: 72 @50434 has 1 MA's), (Start: 117 @50341 has 2 MA's), (Start: 132 @50311 has 1 MA's), (133, 50308), (149, 50242), (165, 50197), (172, 50173), (182, 50119), (196, 50083), (220, 50032),

Gene: Quallification_78 Start: 49115, Stop: 49432, Start Num: 121

Candidate Starts for Quallification_78:

(43, 48932), (Start: 121 @49115 has 157 MA's), (160, 49256),

Gene: QuickMath_69 Start: 44476, Stop: 44817, Start Num: 111

Candidate Starts for QuickMath_69:

(Start: 111 @44476 has 216 MA's), (197, 44776), (200, 44779),

Gene: Quico_73 Start: 43794, Stop: 44156, Start Num: 111

Candidate Starts for Quico_73:

(Start: 111 @43794 has 216 MA's), (197, 44094), (200, 44097), (218, 44139),

Gene: Rabbitrun_72 Start: 44571, Stop: 44918, Start Num: 110

Candidate Starts for Rabbitrun_72:

(58, 44460), (Start: 73 @44490 has 2 MA's), (74, 44493), (75, 44496), (92, 44538), (Start: 106 @44562 has 1 MA's), (Start: 110 @44571 has 2 MA's), (142, 44652), (180, 44808), (188, 44835), (192, 44847), (198, 44862), (200, 44865),

Gene: Radiance_64 Start: 41901, Stop: 42263, Start Num: 111

Candidate Starts for Radiance_64:

(Start: 111 @41901 has 216 MA's), (159, 42060), (197, 42201), (200, 42204), (218, 42246),

Gene: Raela_69 Start: 39678, Stop: 40031, Start Num: 93

Candidate Starts for Raela_69:

(Start: 93 @39678 has 17 MA's), (109, 39705), (155, 39840), (169, 39870), (178, 39921), (180, 39927), (184, 39942), (190, 39960), (197, 39984), (199, 39987),

Gene: Rakim_78 Start: 48584, Stop: 48901, Start Num: 121
Candidate Starts for Rakim_78:
(43, 48401), (Start: 121 @48584 has 157 MA's), (160, 48725),

Gene: Ramsey_64 Start: 42214, Stop: 42576, Start Num: 111
Candidate Starts for Ramsey_64:
(Start: 111 @42214 has 216 MA's), (159, 42373), (197, 42514), (218, 42559),

Gene: Ranunculus_78 Start: 52647, Stop: 52321, Start Num: 121
Candidate Starts for Ranunculus_78:
(Start: 121 @52647 has 157 MA's), (Start: 132 @52617 has 1 MA's), (149, 52548), (165, 52503), (172, 52479), (196, 52389),

Gene: Rattail_30 Start: 20919, Stop: 20599, Start Num: 118
Candidate Starts for Rattail_30:
(2, 21354), (19, 21204), (65, 21009), (Start: 91 @20952 has 15 MA's), (Start: 118 @20919 has 7 MA's), (148, 20823),

Gene: RazzB_81 Start: 49953, Stop: 49627, Start Num: 117
Candidate Starts for RazzB_81:
(Start: 72 @50046 has 1 MA's), (Start: 117 @49953 has 2 MA's), (Start: 132 @49923 has 1 MA's), (133, 49920), (149, 49854), (165, 49809), (172, 49785), (182, 49731), (196, 49695), (220, 49644),

Gene: Red305_66 Start: 46467, Stop: 46799, Start Num: 115
Candidate Starts for Red305_66:
(29, 46191), (30, 46203), (31, 46212), (35, 46236), (51, 46314), (69, 46362), (Start: 115 @46467 has 14 MA's), (159, 46611), (180, 46695), (190, 46728),

Gene: RedBird_64 Start: 42140, Stop: 42502, Start Num: 111
Candidate Starts for RedBird_64:
(62, 42035), (66, 42041), (87, 42095), (Start: 111 @42140 has 216 MA's), (Start: 128 @42173 has 1 MA's), (172, 42344), (197, 42440), (200, 42443), (218, 42485),

Gene: RedFox_30 Start: 20869, Stop: 20516, Start Num: 91
Candidate Starts for RedFox_30:
(2, 21271), (19, 21121), (65, 20926), (Start: 91 @20869 has 15 MA's), (Start: 118 @20836 has 7 MA's), (148, 20740),

Gene: RedRaider77_68 Start: 39066, Stop: 39419, Start Num: 93
Candidate Starts for RedRaider77_68:
(Start: 93 @39066 has 17 MA's), (109, 39093), (155, 39228), (169, 39258), (178, 39309), (180, 39315), (184, 39330), (190, 39348), (197, 39372), (199, 39375),

Gene: Redno2_116 Start: 66004, Stop: 66333, Start Num: 120
Candidate Starts for Redno2_116:
(Start: 120 @66004 has 22 MA's), (141, 66073), (166, 66163), (167, 66166), (180, 66232), (209, 66316),

Gene: Renaud18_75 Start: 44207, Stop: 44563, Start Num: 111
Candidate Starts for Renaud18_75:

(Start: 111 @44207 has 216 MA's), (159, 44366), (197, 44507),

Gene: Renna12_29 Start: 20890, Stop: 20534, Start Num: 91

Candidate Starts for Renna12_29:

(Start: 91 @20890 has 15 MA's), (Start: 118 @20857 has 7 MA's), (148, 20761), (191, 20596),

Gene: Rialto_70 Start: 44435, Stop: 44797, Start Num: 111

Candidate Starts for Rialto_70:

(Start: 111 @44435 has 216 MA's), (197, 44735), (200, 44738), (218, 44780),

Gene: Rimmer_78 Start: 48820, Stop: 49137, Start Num: 121

Candidate Starts for Rimmer_78:

(43, 48637), (Start: 121 @48820 has 157 MA's), (160, 48961),

Gene: Rita_66 Start: 40513, Stop: 40875, Start Num: 111

Candidate Starts for Rita_66:

(Start: 111 @40513 has 216 MA's), (159, 40672), (197, 40813), (218, 40858),

Gene: RitaG_61 Start: 41618, Stop: 41974, Start Num: 111

Candidate Starts for RitaG_61:

(62, 41513), (66, 41519), (87, 41573), (Start: 111 @41618 has 216 MA's), (Start: 128 @41651 has 1 MA's), (172, 41822), (197, 41918), (200, 41921),

Gene: RiverMonster_77 Start: 48648, Stop: 48965, Start Num: 121

Candidate Starts for RiverMonster_77:

(43, 48465), (Start: 121 @48648 has 157 MA's), (160, 48789),

Gene: Rizwana_65 Start: 46684, Stop: 46358, Start Num: 121

Candidate Starts for Rizwana_65:

(Start: 121 @46684 has 157 MA's), (Start: 132 @46654 has 1 MA's), (133, 46651), (196, 46426),

Gene: Rockne_66 Start: 42422, Stop: 42778, Start Num: 111

Candidate Starts for Rockne_66:

(Start: 111 @42422 has 216 MA's), (197, 42722), (200, 42725),

Gene: RockyHorror_66 Start: 41564, Stop: 41926, Start Num: 111

Candidate Starts for RockyHorror_66:

(Start: 111 @41564 has 216 MA's), (197, 41864), (218, 41909),

Gene: Ronaldo_98 Start: 49040, Stop: 49366, Start Num: 123

Candidate Starts for Ronaldo_98:

(Start: 123 @49040 has 4 MA's), (147, 49121), (172, 49205), (179, 49244), (191, 49283),

Gene: Rose5_66 Start: 45488, Stop: 45859, Start Num: 119

Candidate Starts for Rose5_66:

(Start: 119 @45488 has 5 MA's), (145, 45566), (180, 45713), (201, 45776), (230, 45851),

Gene: Royals2015_68 Start: 42421, Stop: 42777, Start Num: 111

Candidate Starts for Royals2015_68:

(Start: 111 @42421 has 216 MA's), (Start: 132 @42463 has 1 MA's), (159, 42580), (197, 42721),

Gene: Ruby_61 Start: 41693, Stop: 42055, Start Num: 111

Candidate Starts for Ruby_61:

(Start: 111 @41693 has 216 MA's), (197, 41993), (218, 42038),

Gene: SG4_62 Start: 41300, Stop: 41665, Start Num: 111

Candidate Starts for SG4_62:

(Start: 111 @41300 has 216 MA's), (197, 41600),

Gene: Saal_67 Start: 43437, Stop: 43799, Start Num: 111

Candidate Starts for Saal_67:

(Start: 111 @43437 has 216 MA's), (159, 43596), (197, 43737), (200, 43740), (218, 43782),

Gene: Saints25_76 Start: 48058, Stop: 48375, Start Num: 121

Candidate Starts for Saints25_76:

(43, 47875), (Start: 121 @48058 has 157 MA's), (160, 48199),

Gene: Samty_66 Start: 46475, Stop: 46807, Start Num: 115

Candidate Starts for Samty_66:

(30, 46211), (31, 46220), (35, 46244), (51, 46322), (69, 46370), (Start: 115 @46475 has 14 MA's), (159, 46619), (180, 46703), (190, 46736),

Gene: Sandalphon_66 Start: 42944, Stop: 43306, Start Num: 111

Candidate Starts for Sandalphon_66:

(59, 42827), (Start: 111 @42944 has 216 MA's), (159, 43103), (197, 43244), (218, 43289),

Gene: Sarma624_64 Start: 39148, Stop: 39510, Start Num: 111

Candidate Starts for Sarma624_64:

(Start: 111 @39148 has 216 MA's), (159, 39307), (172, 39352), (197, 39448), (200, 39451), (218, 39493),

Gene: Sassafras_64 Start: 42458, Stop: 42820, Start Num: 111

Candidate Starts for Sassafras_64:

(62, 42353), (66, 42359), (87, 42413), (Start: 111 @42458 has 216 MA's), (Start: 128 @42491 has 1 MA's), (172, 42662), (197, 42758), (200, 42761), (218, 42803),

Gene: Sassay_72 Start: 46748, Stop: 47065, Start Num: 121

Candidate Starts for Sassay_72:

(43, 46565), (Start: 121 @46748 has 157 MA's), (160, 46889),

Gene: SassyB_59 Start: 40248, Stop: 40610, Start Num: 111

Candidate Starts for SassyB_59:

(Start: 111 @40248 has 216 MA's), (197, 40548), (200, 40551), (218, 40593),

Gene: Schmidt_45 Start: 30353, Stop: 30685, Start Num: 113

Candidate Starts for Schmidt_45:

(54, 30221), (69, 30251), (82, 30290), (Start: 113 @30353 has 13 MA's), (130, 30386), (152, 30476), (167, 30527), (195, 30644), (200, 30650), (207, 30671),

Gene: Scottish_64 Start: 42414, Stop: 42776, Start Num: 111

Candidate Starts for Scottish_64:

(62, 42309), (66, 42315), (87, 42369), (Start: 111 @42414 has 216 MA's), (Start: 128 @42447 has 1 MA's), (197, 42714), (200, 42717), (218, 42759),

Gene: Seabastian_71 Start: 45319, Stop: 45681, Start Num: 111

Candidate Starts for Seabastian_71:

(Start: 111 @45319 has 216 MA's), (172, 45523), (197, 45619), (218, 45664),

Gene: Seagreen_64 Start: 41603, Stop: 41965, Start Num: 111

Candidate Starts for Seagreen_64:

(Start: 111 @41603 has 216 MA's), (197, 41903), (200, 41906), (218, 41948),

Gene: Sephiroth_73 Start: 45931, Stop: 46353, Start Num: 73

Candidate Starts for Sephiroth_73:

(Start: 73 @45931 has 2 MA's), (180, 46252),

Gene: ShamWow_77 Start: 48970, Stop: 49287, Start Num: 121

Candidate Starts for ShamWow_77:

(43, 48787), (Start: 121 @48970 has 157 MA's), (160, 49111),

Gene: Shauna1_63 Start: 42143, Stop: 42505, Start Num: 111

Candidate Starts for Shauna1_63:

(Start: 111 @42143 has 216 MA's), (197, 42443), (200, 42446), (218, 42488),

Gene: ShiLan_64 Start: 42432, Stop: 42788, Start Num: 111

Candidate Starts for ShiLan_64:

(Start: 111 @42432 has 216 MA's), (159, 42591), (197, 42732), (200, 42735),

Gene: ShowerHandel_68 Start: 42396, Stop: 42758, Start Num: 111

Candidate Starts for ShowerHandel_68:

(Start: 111 @42396 has 216 MA's), (159, 42555), (165, 42570), (197, 42696), (218, 42741),

Gene: SiSi_63 Start: 41202, Stop: 41558, Start Num: 111

Candidate Starts for SiSi_63:

(Start: 111 @41202 has 216 MA's), (197, 41502), (200, 41505),

Gene: SilentRX_62 Start: 45416, Stop: 45102, Start Num: 121

Candidate Starts for SilentRX_62:

(49, 45581), (56, 45545), (Start: 121 @45416 has 157 MA's), (156, 45290), (196, 45158), (202, 45149),

Gene: SilverChicken_75 Start: 42112, Stop: 42474, Start Num: 111

Candidate Starts for SilverChicken_75:

(Start: 111 @42112 has 216 MA's), (172, 42316), (197, 42412), (200, 42415), (218, 42457),

Gene: Simpliphy_76 Start: 48048, Stop: 48365, Start Num: 121

Candidate Starts for Simpliphy_76:

(43, 47865), (Start: 121 @48048 has 157 MA's), (160, 48189),

Gene: SirDuracell_76 Start: 47334, Stop: 47651, Start Num: 121

Candidate Starts for SirDuracell_76:

(43, 47151), (Start: 121 @47334 has 157 MA's), (Start: 132 @47358 has 1 MA's), (160, 47475),

Gene: Skitty_53 Start: 29133, Stop: 29486, Start Num: 125

Candidate Starts for Skitty_53:

(Start: 125 @29133 has 3 MA's), (152, 29238), (218, 29454),

Gene: Snenia_65 Start: 46468, Stop: 46800, Start Num: 115

Candidate Starts for Snenia_65:

(29, 46192), (30, 46204), (31, 46213), (35, 46237), (51, 46315), (69, 46363), (Start: 115 @46468 has 14 MA's), (159, 46612), (180, 46696), (190, 46729),

Gene: Soos_87 Start: 57034, Stop: 57414, Start Num: 105

Candidate Starts for Soos_87:

(21, 56746), (32, 56821), (51, 56908), (Start: 105 @57034 has 3 MA's), (188, 57295), (191, 57304), (200, 57328), (203, 57334), (221, 57376),

Gene: SophKB_74 Start: 47726, Stop: 48043, Start Num: 121

Candidate Starts for SophKB_74:

(43, 47543), (Start: 121 @47726 has 157 MA's), (160, 47867),

Gene: Sotrice96_78 Start: 48729, Stop: 49046, Start Num: 121

Candidate Starts for Sotrice96_78:

(43, 48546), (Start: 121 @48729 has 157 MA's), (160, 48870),

Gene: Soul22_71 Start: 43477, Stop: 43839, Start Num: 111

Candidate Starts for Soul22_71:

(Start: 111 @43477 has 216 MA's), (159, 43636), (197, 43777), (200, 43780), (218, 43822),

Gene: Spartacus_67 Start: 42463, Stop: 42825, Start Num: 111

Candidate Starts for Spartacus_67:

(Start: 111 @42463 has 216 MA's), (197, 42763), (200, 42766), (218, 42808),

Gene: Spikelee_72 Start: 44062, Stop: 44424, Start Num: 111

Candidate Starts for Spikelee_72:

(Start: 111 @44062 has 216 MA's), (197, 44362), (218, 44407),

Gene: Splinter_51 Start: 33608, Stop: 33991, Start Num: 113

Candidate Starts for Splinter_51:

(Start: 113 @33608 has 13 MA's), (152, 33731), (201, 33914), (217, 33956),

Gene: Spooky_68 Start: 42098, Stop: 42427, Start Num: 121

Candidate Starts for Spooky_68:

(Start: 121 @42098 has 157 MA's), (200, 42377), (211, 42407), (218, 42419),

Gene: Spoonbill_63 Start: 41578, Stop: 41934, Start Num: 111

Candidate Starts for Spoonbill_63:

(62, 41473), (66, 41479), (87, 41533), (Start: 111 @41578 has 216 MA's), (Start: 128 @41611 has 1 MA's), (172, 41782), (197, 41878), (200, 41881),

Gene: Squiddly_73 Start: 46416, Stop: 46745, Start Num: 121

Candidate Starts for Squiddly_73:

(Start: 121 @46416 has 157 MA's), (200, 46695), (211, 46725), (218, 46737),

Gene: Squint_116 Start: 64970, Stop: 65290, Start Num: 120

Candidate Starts for Squint_116:

(Start: 120 @64970 has 22 MA's), (141, 65039), (152, 65081), (180, 65198),

Gene: Squirty_67 Start: 43396, Stop: 43758, Start Num: 111

Candidate Starts for Squirty_67:

(Start: 111 @43396 has 216 MA's), (Start: 128 @43429 has 1 MA's), (172, 43600), (197, 43696), (200, 43699), (218, 43741),

Gene: StAnnes_63 Start: 42321, Stop: 42683, Start Num: 111
Candidate Starts for StAnnes_63:
(Start: 111 @42321 has 216 MA's), (197, 42621), (200, 42624), (218, 42666),

Gene: Stank_80 Start: 48987, Stop: 49304, Start Num: 121
Candidate Starts for Stank_80:
(43, 48804), (Start: 121 @48987 has 157 MA's), (160, 49128),

Gene: Stap_63 Start: 42347, Stop: 42709, Start Num: 111
Candidate Starts for Stap_63:
(62, 42242), (66, 42248), (87, 42302), (Start: 111 @42347 has 216 MA's), (Start: 128 @42380 has 1 MA's), (159, 42506), (197, 42647), (200, 42650), (218, 42692),

Gene: Starcevich_65 Start: 41944, Stop: 42300, Start Num: 111
Candidate Starts for Starcevich_65:
(Start: 111 @41944 has 216 MA's), (197, 42244), (200, 42247),

Gene: Stark_78 Start: 48531, Stop: 48848, Start Num: 121
Candidate Starts for Stark_78:
(43, 48348), (Start: 121 @48531 has 157 MA's), (160, 48672),

Gene: StellaBean_75 Start: 48294, Stop: 48611, Start Num: 121
Candidate Starts for StellaBean_75:
(43, 48111), (Start: 121 @48294 has 157 MA's), (160, 48435),

Gene: Sting_90 Start: 57473, Stop: 57853, Start Num: 105
Candidate Starts for Sting_90:
(21, 57185), (32, 57260), (51, 57347), (Start: 105 @57473 has 3 MA's), (Start: 114 @57485 has 3 MA's), (188, 57734), (191, 57743), (200, 57767), (203, 57773), (221, 57815),

Gene: StolenFromERC_80 Start: 48769, Stop: 49086, Start Num: 121
Candidate Starts for StolenFromERC_80:
(43, 48586), (Start: 121 @48769 has 157 MA's), (160, 48910),

Gene: StormChicken_79 Start: 49427, Stop: 49744, Start Num: 121
Candidate Starts for StormChicken_79:
(43, 49244), (Start: 121 @49427 has 157 MA's), (160, 49568),

Gene: Strokeseat_61 Start: 39911, Stop: 40273, Start Num: 111
Candidate Starts for Strokeseat_61:
(Start: 111 @39911 has 216 MA's), (197, 40211), (200, 40214), (218, 40256),

Gene: SuperGrey_69 Start: 44472, Stop: 44828, Start Num: 111
Candidate Starts for SuperGrey_69:
(Start: 111 @44472 has 216 MA's), (159, 44631), (197, 44772), (200, 44775), (218, 44811),

Gene: Superphikiman_115 Start: 64061, Stop: 64381, Start Num: 120
Candidate Starts for Superphikiman_115:
(Start: 120 @64061 has 22 MA's), (141, 64130), (152, 64172), (180, 64289),

Gene: SwagPigglett_70 Start: 44704, Stop: 45066, Start Num: 111
Candidate Starts for SwagPigglett_70:

(59, 44587), (Start: 111 @44704 has 216 MA's), (159, 44863), (197, 45004), (218, 45049),

Gene: Syleon_75 Start: 45869, Stop: 46291, Start Num: 73

Candidate Starts for Syleon_75:

(Start: 73 @45869 has 2 MA's), (75, 45875), (180, 46190),

Gene: TBrady12_80 Start: 48468, Stop: 48785, Start Num: 121

Candidate Starts for TBrady12_80:

(43, 48285), (Start: 121 @48468 has 157 MA's), (160, 48609),

Gene: TChen_67 Start: 44519, Stop: 44881, Start Num: 111

Candidate Starts for TChen_67:

(Start: 111 @44519 has 216 MA's), (197, 44819), (200, 44822), (218, 44864),

Gene: TDanisky_72 Start: 43265, Stop: 43606, Start Num: 111

Candidate Starts for TDanisky_72:

(Start: 111 @43265 has 216 MA's), (159, 43424),

Gene: TZGordon_53 Start: 32954, Stop: 33337, Start Num: 113

Candidate Starts for TZGordon_53:

(Start: 113 @32954 has 13 MA's), (152, 33077), (201, 33260), (217, 33302),

Gene: Taj_70 Start: 44021, Stop: 44383, Start Num: 111

Candidate Starts for Taj_70:

(100, 44006), (Start: 111 @44021 has 216 MA's), (197, 44321), (200, 44324), (218, 44366),

Gene: Tank_65 Start: 46679, Stop: 46338, Start Num: 121

Candidate Starts for Tank_65:

(Start: 121 @46679 has 157 MA's), (147, 46592), (196, 46421), (215, 46379),

Gene: Taptic_52 Start: 43843, Stop: 44184, Start Num: 111

Candidate Starts for Taptic_52:

(Start: 111 @43843 has 216 MA's), (137, 43897), (140, 43912), (144, 43930), (160, 43996), (167, 44014), (177, 44068), (189, 44113), (197, 44134), (207, 44158), (208, 44161),

Gene: Tarkin_76 Start: 48716, Stop: 49033, Start Num: 121

Candidate Starts for Tarkin_76:

(43, 48533), (Start: 121 @48716 has 157 MA's), (160, 48857),

Gene: Tchotchke_64 Start: 41928, Stop: 42290, Start Num: 111

Candidate Starts for Tchotchke_64:

(Start: 111 @41928 has 216 MA's), (159, 42087), (197, 42228), (200, 42231), (218, 42273),

Gene: TeardropMSU_73 Start: 47716, Stop: 48033, Start Num: 121

Candidate Starts for TeardropMSU_73:

(43, 47533), (Start: 121 @47716 has 157 MA's), (160, 47857),

Gene: Teaspoon_78 Start: 48610, Stop: 48927, Start Num: 121

Candidate Starts for Teaspoon_78:

(43, 48427), (Start: 121 @48610 has 157 MA's), (160, 48751),

Gene: Teng_62 Start: 33271, Stop: 33660, Start Num: 114

Candidate Starts for Teng_62:

(33, 33037), (Start: 114 @33271 has 3 MA's), (152, 33397), (170, 33460), (177, 33505), (217, 33622), (219, 33625),

Gene: Terij_52 Start: 35668, Stop: 36003, Start Num: 103

Candidate Starts for Terij_52:

(4, 35263), (9, 35347), (11, 35350), (13, 35356), (22, 35413), (23, 35416), (71, 35608), (Start: 97 @35656 has 5 MA's), (99, 35659), (Start: 103 @35668 has 5 MA's), (151, 35785), (154, 35803), (188, 35935), (200, 35968),

Gene: Terminus_80 Start: 49503, Stop: 49820, Start Num: 121

Candidate Starts for Terminus_80:

(43, 49320), (Start: 121 @49503 has 157 MA's), (160, 49644),

Gene: Tesla_66 Start: 38915, Stop: 39268, Start Num: 93

Candidate Starts for Tesla_66:

(Start: 93 @38915 has 17 MA's), (109, 38942), (155, 39077), (169, 39107), (178, 39158), (180, 39164), (184, 39179), (190, 39197), (197, 39221), (199, 39224),

Gene: ThetaBob_73 Start: 44248, Stop: 44604, Start Num: 111

Candidate Starts for ThetaBob_73:

(61, 44137), (Start: 111 @44248 has 216 MA's), (197, 44548), (200, 44551),

Gene: Thibault_106 Start: 63336, Stop: 63668, Start Num: 121

Candidate Starts for Thibault_106:

(Start: 121 @63336 has 157 MA's), (153, 63447), (156, 63471), (209, 63651),

Gene: Thimble_79 Start: 47951, Stop: 48268, Start Num: 121

Candidate Starts for Thimble_79:

(43, 47768), (Start: 121 @47951 has 157 MA's), (160, 48092),

Gene: ThreeRngTarjay_118 Start: 68893, Stop: 69225, Start Num: 120

Candidate Starts for ThreeRngTarjay_118:

(Start: 120 @68893 has 22 MA's), (141, 68962), (180, 69121),

Gene: Thresher_79 Start: 49590, Stop: 49907, Start Num: 121

Candidate Starts for Thresher_79:

(43, 49407), (Start: 121 @49590 has 157 MA's), (160, 49731),

Gene: TinaLin_50 Start: 32410, Stop: 32790, Start Num: 113

Candidate Starts for TinaLin_50:

(Start: 113 @32410 has 13 MA's), (139, 32473), (152, 32533), (180, 32650), (190, 32689), (201, 32716), (217, 32758),

Gene: Tomaszewski_72 Start: 47879, Stop: 48196, Start Num: 121

Candidate Starts for Tomaszewski_72:

(43, 47696), (Start: 121 @47879 has 157 MA's), (Start: 132 @47903 has 1 MA's), (160, 48020),

Gene: Tonitrus_70 Start: 51892, Stop: 52272, Start Num: 118

Candidate Starts for Tonitrus_70:

(Start: 118 @51892 has 7 MA's), (163, 52051), (168, 52063), (180, 52135),

Gene: Totinger_65 Start: 41519, Stop: 41875, Start Num: 111

Candidate Starts for Totinger_65:

(Start: 111 @41519 has 216 MA's), (159, 41678), (197, 41819), (200, 41822), (218, 41858),

Gene: Toto_75 Start: 48970, Stop: 49287, Start Num: 121

Candidate Starts for Toto_75:

(43, 48787), (Start: 121 @48970 has 157 MA's), (160, 49111),

Gene: Traaww1_73 Start: 48154, Stop: 48471, Start Num: 121

Candidate Starts for Traaww1_73:

(43, 47971), (Start: 121 @48154 has 157 MA's), (160, 48295),

Gene: Trax_71 Start: 44944, Stop: 45291, Start Num: 110

Candidate Starts for Trax_71:

(Start: 110 @44944 has 2 MA's), (142, 45025), (180, 45181), (188, 45208), (198, 45235), (200, 45238),

Gene: TriFive_66 Start: 46467, Stop: 46799, Start Num: 115

Candidate Starts for TriFive_66:

(29, 46191), (30, 46203), (31, 46212), (35, 46236), (51, 46314), (69, 46362), (Start: 115 @46467 has 14 MA's), (159, 46611), (180, 46695), (190, 46728),

Gene: Tuco_78 Start: 49478, Stop: 49795, Start Num: 121

Candidate Starts for Tuco_78:

(43, 49295), (Start: 121 @49478 has 157 MA's), (160, 49619),

Gene: Tweety_65 Start: 43115, Stop: 43471, Start Num: 111

Candidate Starts for Tweety_65:

(Start: 111 @43115 has 216 MA's), (159, 43274), (165, 43289), (197, 43415), (200, 43418), (218, 43454),

Gene: Typha_64 Start: 45161, Stop: 45511, Start Num: 98

Candidate Starts for Typha_64:

(70, 45089), (79, 45119), (Start: 98 @45161 has 6 MA's), (Start: 106 @45176 has 1 MA's), (Start: 118 @45194 has 7 MA's), (137, 45242), (139, 45248), (147, 45284), (172, 45368), (173, 45374), (178, 45404), (188, 45437),

Gene: Tyson_67 Start: 45417, Stop: 45785, Start Num: 119

Candidate Starts for Tyson_67:

(Start: 119 @45417 has 5 MA's), (133, 45444), (149, 45513), (154, 45534), (160, 45558), (180, 45639), (201, 45702), (230, 45777),

Gene: Ukulele_72 Start: 47861, Stop: 48178, Start Num: 121

Candidate Starts for Ukulele_72:

(43, 47678), (Start: 121 @47861 has 157 MA's), (160, 48002),

Gene: UncleRicky_64 Start: 42054, Stop: 42416, Start Num: 111

Candidate Starts for UncleRicky_64:

(Start: 111 @42054 has 216 MA's), (159, 42213), (197, 42354), (200, 42357), (218, 42399),

Gene: VRedHorse_65 Start: 41397, Stop: 41759, Start Num: 111

Candidate Starts for VRedHorse_65:

(Start: 111 @41397 has 216 MA's), (Start: 128 @41430 has 1 MA's), (159, 41556), (197, 41697), (200, 41700), (218, 41742),

Gene: VanLee_116 Start: 60612, Stop: 60974, Start Num: 122

Candidate Starts for VanLee_116:

(Start: 122 @60612 has 1 MA's), (193, 60858), (210, 60903), (218, 60918), (222, 60927), (228, 60942),

Gene: VasuNzinga_68 Start: 39017, Stop: 39370, Start Num: 93

Candidate Starts for VasuNzinga_68:

(Start: 93 @39017 has 17 MA's), (109, 39044), (155, 39179), (169, 39209), (178, 39260), (180, 39266), (184, 39281), (190, 39299), (197, 39323), (199, 39326),

Gene: Velveteen_61 Start: 39148, Stop: 39510, Start Num: 111

Candidate Starts for Velveteen_61:

(Start: 111 @39148 has 216 MA's), (159, 39307), (172, 39352), (197, 39448), (200, 39451), (218, 39493),

Gene: Vendetta_51 Start: 33608, Stop: 33991, Start Num: 113

Candidate Starts for Vendetta_51:

(Start: 113 @33608 has 13 MA's), (152, 33731), (201, 33914), (217, 33956),

Gene: Veteran_62 Start: 40798, Stop: 41154, Start Num: 111

Candidate Starts for Veteran_62:

(Start: 111 @40798 has 216 MA's), (172, 41002), (197, 41098), (200, 41101), (218, 41137),

Gene: Violac_67 Start: 42928, Stop: 43290, Start Num: 111

Candidate Starts for Violac_67:

(Start: 111 @42928 has 216 MA's), (159, 43087), (165, 43102), (197, 43228), (218, 43273),

Gene: Violeta_43 Start: 25712, Stop: 26089, Start Num: 107

Candidate Starts for Violeta_43:

(Start: 107 @25712 has 9 MA's), (138, 25775), (145, 25802), (158, 25862), (188, 25976), (190, 25982), (227, 26078),

Gene: Vivum_68 Start: 42717, Stop: 43079, Start Num: 111

Candidate Starts for Vivum_68:

(59, 42600), (Start: 111 @42717 has 216 MA's), (Start: 132 @42759 has 1 MA's), (159, 42876), (197, 43017), (200, 43020), (218, 43062),

Gene: Volt_99 Start: 49204, Stop: 49530, Start Num: 123

Candidate Starts for Volt_99:

(Start: 123 @49204 has 4 MA's), (147, 49285), (172, 49369), (179, 49408), (191, 49447),

Gene: Wachhund_66 Start: 42028, Stop: 42390, Start Num: 111

Candidate Starts for Wachhund_66:

(Start: 111 @42028 has 216 MA's), (197, 42328), (218, 42373),

Gene: Wamburgexpress_66 Start: 45044, Stop: 45415, Start Num: 119

Candidate Starts for Wamburgexpress_66:

(Start: 119 @45044 has 5 MA's), (145, 45122), (180, 45269), (201, 45332), (230, 45407),

Gene: Wanda_122 Start: 66271, Stop: 66600, Start Num: 120

Candidate Starts for Wanda_122:

(Start: 120 @66271 has 22 MA's), (141, 66340), (146, 66358), (166, 66430), (167, 66433), (180, 66499), (209, 66583),

Gene: Warren_41 Start: 25673, Stop: 26050, Start Num: 107

Candidate Starts for Warren_41:

(Start: 107 @25673 has 9 MA's), (138, 25736), (145, 25763), (188, 25937), (190, 25943), (196, 25964), (227, 26039),

Gene: Wee_70 Start: 44097, Stop: 44459, Start Num: 111

Candidate Starts for Wee_70:

(100, 44082), (Start: 111 @44097 has 216 MA's), (197, 44397), (200, 44400), (218, 44442),

Gene: Weirido19_91 Start: 53190, Stop: 53612, Start Num: 85

Candidate Starts for Weirido19_91:

(85, 53190), (140, 53316), (173, 53445), (188, 53508), (204, 53550), (225, 53604),

Gene: Whatsapiecost_65 Start: 41324, Stop: 41686, Start Num: 111

Candidate Starts for Whatsapiecost_65:

(Start: 111 @41324 has 216 MA's), (Start: 128 @41357 has 1 MA's), (197, 41624), (200, 41627), (218, 41669),

Gene: Whirlwind_66 Start: 46283, Stop: 46615, Start Num: 115

Candidate Starts for Whirlwind_66:

(29, 46007), (30, 46019), (31, 46028), (35, 46052), (51, 46130), (69, 46178), (Start: 115 @46283 has 14 MA's), (159, 46427), (180, 46511), (190, 46544),

Gene: Whouxphf_62 Start: 42311, Stop: 42673, Start Num: 111

Candidate Starts for Whouxphf_62:

(Start: 111 @42311 has 216 MA's), (197, 42611), (218, 42656),

Gene: Wiggin_79 Start: 48555, Stop: 48872, Start Num: 121

Candidate Starts for Wiggin_79:

(43, 48372), (Start: 121 @48555 has 157 MA's), (160, 48696),

Gene: Wildcat_77 Start: 48619, Stop: 48984, Start Num: 97

Candidate Starts for Wildcat_77:

(Start: 73 @48556 has 2 MA's), (Start: 97 @48619 has 5 MA's), (167, 48811), (198, 48931), (211, 48964),

Gene: Wilde_67 Start: 46978, Stop: 46637, Start Num: 121

Candidate Starts for Wilde_67:

(Start: 121 @46978 has 157 MA's), (147, 46891), (196, 46720), (215, 46678),

Gene: WillSterrel_66 Start: 43580, Stop: 43942, Start Num: 111

Candidate Starts for WillSterrel_66:

(Start: 111 @43580 has 216 MA's), (197, 43880), (200, 43883), (218, 43925),

Gene: Willez_72 Start: 46748, Stop: 47065, Start Num: 121

Candidate Starts for Willez_72:

(43, 46565), (Start: 121 @46748 has 157 MA's), (160, 46889),

Gene: Wrackline_70 Start: 37367, Stop: 37759, Start Num: 114

Candidate Starts for Wrackline_70:

(5, 36971), (18, 37061), (37, 37163), (47, 37205), (Start: 114 @37367 has 3 MA's), (134, 37394), (152, 37475), (158, 37502), (177, 37583), (181, 37619), (188, 37640), (214, 37712), (219, 37721),

Gene: Wyatt2_67 Start: 45415, Stop: 45783, Start Num: 119

Candidate Starts for Wyatt2_67:

(Start: 119 @45415 has 5 MA's), (133, 45442), (149, 45511), (154, 45532), (160, 45556), (180, 45637), (201, 45700), (230, 45775),

Gene: XFactor_63 Start: 40832, Stop: 41194, Start Num: 111

Candidate Starts for XFactor_63:

(Start: 111 @40832 has 216 MA's), (197, 41132), (218, 41177),

Gene: Xandras_76 Start: 47963, Stop: 48280, Start Num: 121

Candidate Starts for Xandras_76:

(43, 47780), (Start: 121 @47963 has 157 MA's), (160, 48104),

Gene: YassJohnny_74 Start: 47918, Stop: 48235, Start Num: 121

Candidate Starts for YassJohnny_74:

(43, 47735), (Start: 121 @47918 has 157 MA's), (Start: 132 @47942 has 1 MA's), (160, 48059),

Gene: Yorick_64 Start: 42551, Stop: 42913, Start Num: 111

Candidate Starts for Yorick_64:

(Start: 111 @42551 has 216 MA's), (159, 42710), (197, 42851), (218, 42896),

Gene: Yoshi_81 Start: 44512, Stop: 44874, Start Num: 111

Candidate Starts for Yoshi_81:

(60, 44401), (Start: 111 @44512 has 216 MA's), (197, 44812), (200, 44815), (218, 44857),

Gene: Youngblood_80 Start: 49430, Stop: 49747, Start Num: 121

Candidate Starts for Youngblood_80:

(43, 49247), (Start: 121 @49430 has 157 MA's), (160, 49571),

Gene: Zapner_79 Start: 44176, Stop: 44517, Start Num: 111

Candidate Starts for Zapner_79:

(100, 44161), (Start: 111 @44176 has 216 MA's), (197, 44476), (200, 44479),

Gene: Zelink_117 Start: 68840, Stop: 69172, Start Num: 120

Candidate Starts for Zelink_117:

(Start: 120 @68840 has 22 MA's), (141, 68909), (180, 69068),

Gene: Zerg_65 Start: 41676, Stop: 42038, Start Num: 111

Candidate Starts for Zerg_65:

(Start: 111 @41676 has 216 MA's), (197, 41976), (218, 42021),

Gene: Zhuangyuan_35 Start: 22580, Stop: 22224, Start Num: 94

Candidate Starts for Zhuangyuan_35:

(41, 22724), (65, 22649), (94, 22580), (Start: 118 @22544 has 7 MA's), (148, 22448), (191, 22283), (208, 22235),

Gene: Zizzle_69 Start: 44029, Stop: 44391, Start Num: 111

Candidate Starts for Zizzle_69:

(Start: 111 @44029 has 216 MA's), (159, 44188), (165, 44203), (197, 44329), (218, 44374),

Gene: xkcd_80 Start: 49620, Stop: 49937, Start Num: 121

Candidate Starts for xkcd_80:

(43, 49437), (Start: 121 @49620 has 157 MA's), (160, 49761),