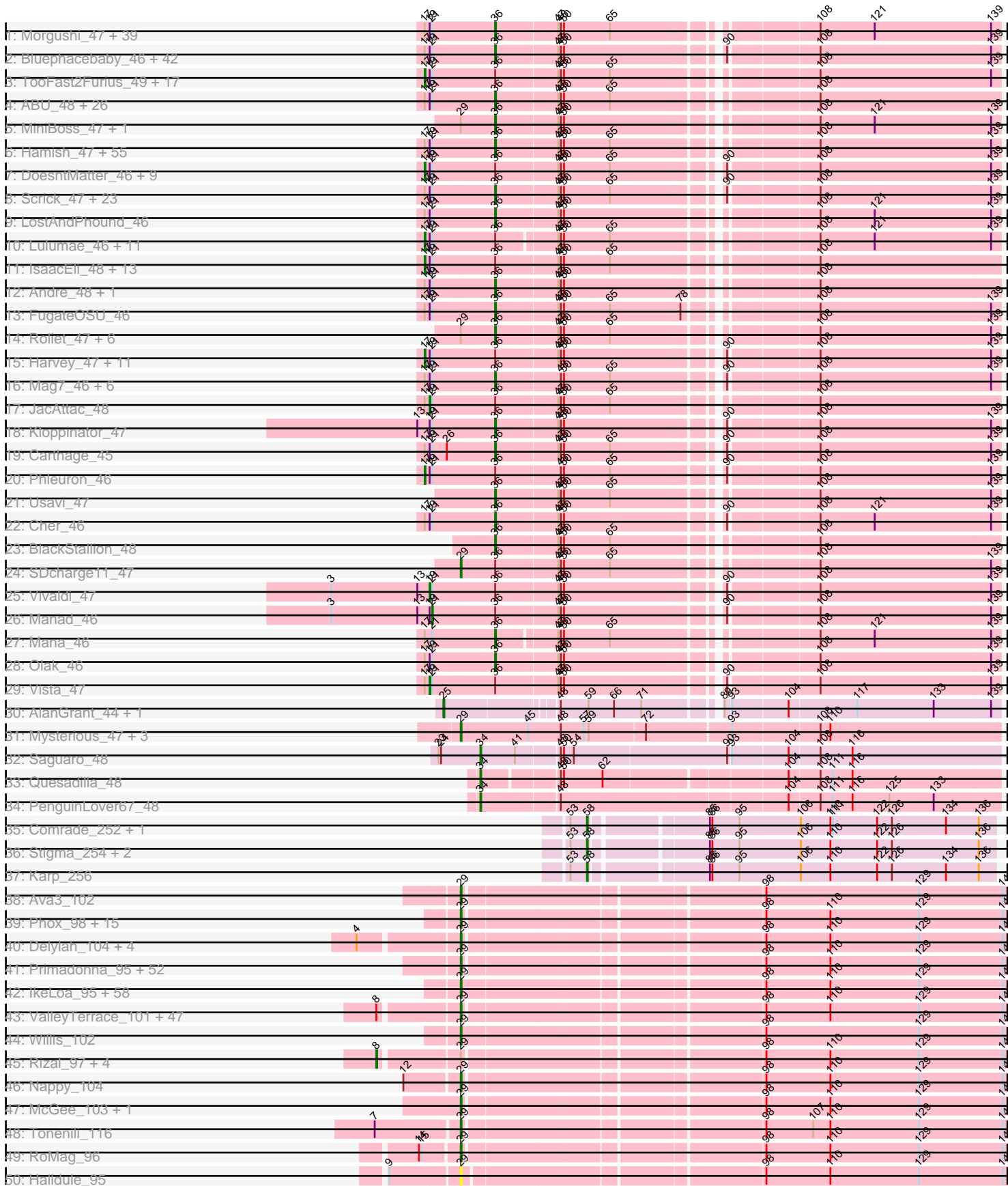
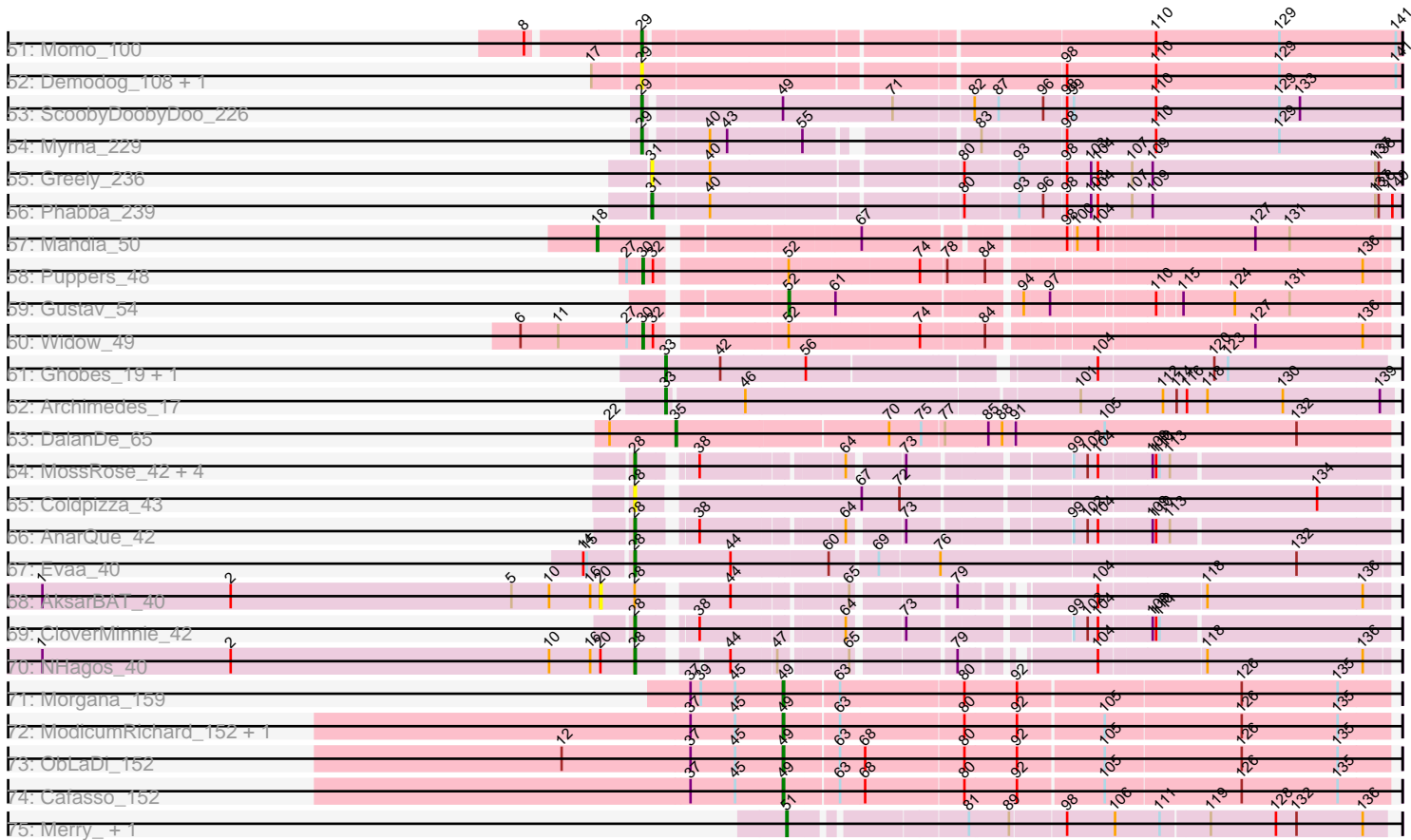


Pham 224148



Pham 224148



Note: Tracks are now grouped by subcluster and scaled. Switching in subcluster is indicated by changes in track color. Track scale is now set by default to display the region 30 bp upstream of start 1 to 30 bp downstream of the last possible start. If this default region is judged to be packed too tightly with annotated starts, the track will be further scaled to only show that region of the ORF with annotated starts. This action will be indicated by adding "Zoomed" to the title. For starts, yellow indicates the location of called starts comprised solely of Glimmer/GeneMark auto-annotations, green indicates the location of called starts with at least 1 manual gene annotation.

Pham 224148 Report

This analysis was run 03/28/25 on database version 593.

Pham number 224148 has 531 members, 56 are drafts.

Phages represented in each track:

- Track 1 : Morgushi_47, Beaglebox_46, Kwadwo_46, Haleema_46, Timmi_46, Dice_46, HenryJackson_46, Orfeu_46, Khan1_47, Lasso_47, Ricotta_46, Iridessa_48, CamL_47, Kahve_46, Lumine_46, TomBombadil_47, Cannibal_47, Dione_46, Mesmerelda_48, Samaymay_47, LuckyMarjie_46, Freya_46, Legolas_47, MrPhizzler_46, Brilliant_47, Simielle_46, Maru_46, Rimu_49, Gareth_46, Grand2040_46, Sophia_46, Eugenia_47, Serendipity_47, QueenBeane_47, PinheadLarry_47, Longacauda_46, Toni_46, Hocus_46, Daffy_47, Phareon_47
- Track 2 : Bluephacebaby_46, JangoPhett_47, Schadenfreude_46, Jesabah_47, SassyCat97_46, Cobra_47, UAch1_47, Wallhey_46, Jillium_46, Held_47, Robyn_46, DonSanchon_46, Potter_46, Mesh1_47, PhatLouie_47, YouGoGlencoco_47, Labeouficaum_46, Matalotodo_47, Zaidier_48, Placalicious_46, Cosmolli16_46, Derpp_46, FriarPreacher_46, Kwksand96_46, Thora_47, Hetaeria_47, Pacifista_46, TyrionL_46, DelRivs_46, MitKao_47, Zonia_47, Aelin_46, Pinkman_46, Zelda_47, Cornbread_47, Altwerkus_46, True_46, GeneCoco_47, Surely_47, Chorkpop_47, Virapocalypse_47, LemonSlice_47, Antonia_46
- Track 3 : TooFast2Furius_49, PhenghisKhan_46, Chute_46, PhrankReynolds_45, Colbert_47, Apizium_47, Basato_48, Pipsqueak_47, Mcshane_46, Olive_47, OliverWalter_47, Waterdiva_47, Coletti_46, Schueller_46, Phergie_46, AngelCake_46, Thunderbird_46, CheetO_47
- Track 4 : ABU_48, PhrodoBaggins_47, Badfish_48, LasagnaCat_48, Katniss_48, Orion_48, Scoot17C_48, Swish_48, PhatCats2014_48, CampRoach_48, Phamished_48, HighStump_47, ElvisPhasley_49, Craff_48, Fringe_48, Adriana_48, Morty_48, PG1_48, RedMaple_47, Mulan_47, Inchworm_48, Yoshand_48, Pherdinand_48, Emiris_48, MelsMeow_47, Lego3393_46, Durga_48
- Track 5 : MiniBoss_47, AltPhacts_47
- Track 6 : Hamish_47, Crownjwl_47, Spartan300_47, Soile_47, Horchata_47, Eremos_47, Solosis_46, AbsoluteMadLad_46, Keitherie_47, Riggan_47, Gwilliam_47, Omniscient_47, Squiggle_47, DaddyDaniels_47, Valjean_47, Megamind20_47, Gophee_47, KingTut_38, MRabcd_46, LeiMonet_48, Kimbrough_47, Daka_48, ShiVal_47, Anderson_47, Jiraiya_46, CharlieGBrown_46, Struggle_46, Haimas_47, EmpTee_47, Doddsville_47, Jiminy_46, Chaelin_47, Burr_46, Roscoe_48, Plata_47, Prickles_47, Iridoclysis_47, Boehler_47, Bishoperium_46, Tomlarah_47, JakeO_46, SirBeauregard_47, Hartsy_47, Phunky_47, Suffolk_47, Windsor_46, Skippy_47, Duggie_46, Mutante_46, ProfessorX_47, Fozzie_46, Cornobble_46, Mecca_46, Virgeve_46, Childish_46, Chipette_48

- Track 7 : DoesntMatter_46, Vaishali24_46, Riverton_46, Melc17_47, Serpentine_0047, SilverBell_47, KlimbOn_47, Gyarad_0047, Newman_47, Inverness_47
- Track 8 : Scrick_47, Telesworld_46, Charles1_47, Quisquiliae_47, Lulwa_47, Slatt_47, Tooj_47, Piglet_0046, JDog_46, HSavage_47, Frankicide_47, Buckeye_47, Orwigg_46, KLucky39_47, Weher20_47, Numberten_47, Chunky_47, DirtJuice_47, Plmatters_47, Oline_46, Podrick_47, Dati_47, Pops_47, Etaye_47
- Track 9 : LostAndPhound_46
- Track 10 : Lulumae_46, Gwennie1_47, Vaticameos_43, Puhltonio_47, Caspiboi_48, Nathan_48, Vortex_47, Murdoc_47, TallGrassMM_47, Roy17_47, Banjo_46, Xavier_46
- Track 11 : IsaacEli_48, Maskar_47, Fang_48, Nacho_0048, Megatron_48, FluffyNinja_48, OSmaximus_48, Chah_49, ThreeOh3D2_48, ImtiyazSitla_47, Ashraf_47, Trypo_48, Kikipoo_48, Sigman_48
- Track 12 : Andre_48, DuchessDung_46
- Track 13 : FugateOSU_46
- Track 14 : Roliet_47, Dingo_47, Mikota_47, BlueHusk_47, Soto_47, KingVeVeVe_47, Sheila_47
- Track 15 : Harvey_47, Nyala_46, Oosterbaan_47, Giraffe_47, Swiphy_49, Mosaic_46, Selr12_47, Lopsy_46, UncleHowie_47, LeeLot_47, Squid_47, Hertubise_47
- Track 16 : Mag7_46, Veritas_46, BatteryCK_46, MichaelPhcott_46, Magic8_47, Nicole21_47, Kailash_47
- Track 17 : JacAttac_48
- Track 18 : Kloppinator_47
- Track 19 : Carthage_45
- Track 20 : Phleuron_46
- Track 21 : Usavi_47
- Track 22 : Cher_46
- Track 23 : BlackStallion_48
- Track 24 : SDcharge11_47
- Track 25 : Vivaldi_47
- Track 26 : Manad_46
- Track 27 : Mana_46
- Track 28 : Olak_46
- Track 29 : Vista_47
- Track 30 : AlanGrant_44, Vincenzo_43
- Track 31 : Mysterious_47, Phelemich_45, Reprobate_46, Nehemiah_45
- Track 32 : Saguaro_48
- Track 33 : Quesadilla_48
- Track 34 : PenguinLover67_48
- Track 35 : Comrade_252, Westy_259
- Track 36 : Stigma_254, Belfort_257, SparkleGoddess_256
- Track 37 : Karp_256
- Track 38 : Ava3_102
- Track 39 : Phox_98, LRRHood_96, Dietrick_93, Ronan_95, Grungle_89, Janiyra_103, Babyland_102, Melpomini_95, BackyardAgain_98, StubbySaigey_104, Cali_97, Napoleon13_97, EmmaElysia_101, Koguma_98, Lukilu_92, Spud_101
- Track 40 : Delylah_104, Littleton_101, Kamryn_101, Capablanca_103, Bigswole_106
- Track 41 : Primadonna_95, Chargie21_98, Yassified_98, Zalkecks_102, Blackbrain_96, Stubby_94, Basquiat_98, Shaqnato_94, Fongie_99, DeejaClivia_90, YoungMoneyMata_102, Burrough_101, Yucca_101, BananaFence_100,

Naval22_106, JayJay_107, Ewok_102, Blackdragon_97, JulietS_96, Rabinovich_99, Pinkcreek_92, Mangeria_101, LinStu_101, EasyJones_104, Salacia_105, Alice_94, DirtMonster_95, NuevoMundo_107, FudgeTart_101, Sebata_103, ScottMcG_98, ET08_90, Darko_101, Sprinklers_97, Wally_100, QBert_95, Cactojaque_96, Bread_101, Fludd_102, Lee7_99, CharlieB_97, BeanWater_93, Belieber_97, Sauce_102, Nidhogg_102, Kboogie_105, TinyTim_101, Pleione_104, Quasimodo_102, HyRo_93, ChickenPhender_97, Maby2021_101, SrishMeg2525_100

- Track 42 : IkeLoa_95, MikeLiesIn_102, Morizzled23_101, DrPhinkDaddy_100, Izajani_101, Mikro_99, Gizmo_105, Daffodil_106, Pio_105, Colt_91, StephanieG_100, ChaylaJr_96, Pier_105, Megamind_100, Blubba_90, DTDevon_102, Grasshills_108, EggyFarm_109, SVoro_99, Erdmann_102, Trinitium_98, NedWong_102, Zeenon_103, Jessibeth14_100, McWolfish_99, Bxz1_99, ErnieJ_97, Roots515_100, FoxtrotP1_101, Khaleesi_100, Caravan_96, Turret_96, ParkTD_102, Catera_98, YemiJoy2021_102, JustHall_98, Bipolarisk_100, Shelob_103, Loanshark_101, BigCity_109, EmToTheThree_104, I3_107, Issimir_100, Jezreel_99, Shrimp_101, Iota_96, Lethe_101, Domi_95, Delilah_101, Bonray_101, Cane17_90, Norm_102, Shifa_90, ZygoTaiga_100, Asterius_104, MoMoMixon_102, Dandelion_108, JigglyPuff_109, PurduePete_101

- Track 43 : ValleyTerrace_101, Tainan_105, Amataga_101, InigoMontoya_102, Derek_101, BadAgartude_97, FrayBell_106, GlutenPhree_100, Tortoise16_98, SmallFry_101, Flabslab_95, Ading_101, Atlantean_100, CindyLou_102, Gabriel_102, Shnickers_101, Rahel_100, Essence_98, Spec_97, Specks_106, Jedediah_104, Ghost_100, Phlegm_103, Chomp_100, Adlitam_101, Breeniome_100, Drazdys_100, Naija_100, Ngannou_97, Audrick_103, Tyke_102, ShiaLabeouf_100, Jemmno_101, Jaygup_101, Phusco_101, Matsumoto_98, InterFolia_109, Bangla1971_102, Latch_101, SilverDipper_102, ArcherS7_100, LolaVinca_102, Teardrop_100, NoodleTree_108, Guwapp_100, Pivoine_100, Patter_101, LordLeafolot_105

- Track 44 : Willis_102

- Track 45 : Rizal_97, Astraea_98, Gamgam_101, JPickles_99, LifeSavor_100

- Track 46 : Nappy_104

- Track 47 : McGee_103, Ablatia_99

- Track 48 : Tonenili_116

- Track 49 : RoMag_96

- Track 50 : Halldule_95

- Track 51 : Momo_100

- Track 52 : Demodog_108, Concombre_108

- Track 53 : ScoobyDoobyDoo_226

- Track 54 : Myrna_229

- Track 55 : Greely_236

- Track 56 : Phabba_239

- Track 57 : Mahdia_50

- Track 58 : Puppies_48

- Track 59 : Gustav_54

- Track 60 : Widow_49

- Track 61 : Ghobes_19, Frizzle_18

- Track 62 : Archimedes_17

- Track 63 : DalanDe_65

- Track 64 : MossRose_42, MakoManhole_42, Yeshua_42, CaiB_42, Wooper_42

- Track 65 : Coldpizza_43

- Track 66 : AnarQue_42

- Track 67 : Evaa_40

- Track 68 : AksarBAT_40

- Track 69 : CloverMinnie_42
- Track 70 : NHagos_40
- Track 71 : Morgana_159
- Track 72 : ModicumRichard_152, Aleemily_150
- Track 73 : ObLaDi_152
- Track 74 : Cafasso_152
- Track 75 : Merry_, Sunny_

Summary of Final Annotations (See graph section above for start numbers):

The start number called the most often in the published annotations is 36, it was called in 204 of the 475 non-draft genes in the pham.

Genes that call this "Most Annotated" start:

- ABU_48, AbsoluteMadLad_46, Adriana_48, Aelin_46, AltPhacts_47, Altwerkus_46, Anderson_47, Andre_48, Antonia_46, Badfish_48, BatteryCK_46, Beaglebox_46, Bishoperium_46, BlackStallion_48, BlueHusk_47, Bluephacebaby_46, Boehler_47, Brilliant_47, Buckeye_47, Burr_46, CamL_47, CampRoach_48, Cannibal_47, Carthage_45, Chaelin_47, Charles1_47, CharlieGBrown_46, Cher_46, Childish_46, Chipette_48, Chorkpop_47, Chunky_47, Cobra_47, Cornbread_47, Cornobble_46, Cosmolli16_46, Craff_48, Crownjwl_47, DaddyDaniels_47, Daffy_47, Daka_48, Dati_47, DelRivs_46, Derpp_46, Dice_46, Dingo_47, Dione_46, DirtJuice_47, Doddsville_47, DonSanchon_46, DuchessDung_46, Duggie_46, Durga_48, ElvisPhasley_49, Emiris_48, EmpTee_47, Eremos_47, Etaye_47, Eugenia_47, Fozzie_46, Frankicide_47, Freya_46, FriarPreacher_46, Fringe_48, FugateOSU_46, Gareth_46, GeneCoco_47, Gophee_47, Grand2040_46, Gwilliam_47, HSavage_47, Haimas_47, Haleema_46, Hamish_47, Hartsy_47, Held_47, HenryJackson_46, Hetaeria_47, HighStump_47, Hocus_46, Horchata_47, Inchworm_48, Iridessa_48, Iridoclysis_47, JDog_46, JakeO_46, JangoPhett_47, Jesabah_47, Jillium_46, Jiminy_46, Jiraiya_46, KLucky39_47, Kahve_46, Kailash_47, Katniss_48, Keitherie_47, Khan1_47, Kimbrough_47, KingTut_38, KingVeVeVe_47, Kloppinator_47, Kwadwo_46, Kwksand96_46, Labeouficaum_46, LasagnaCat_48, Lasso_47, Lego3393_46, Legolas_47, LeiMonet_48, LemonSlice_47, Longacauda_46, LostAndPhound_46, LuckyMarjie_46, Lulwa_47, Lumine_46, MRabcd_46, Mag7_46, Magic8_47, Mana_46, Maru_46, Matalotodo_47, Mecca_46, Megamind20_47, MelsMeow_47, Mesh1_47, Mesmerelda_48, MichaelPhcott_46, Mikota_47, MiniBoss_47, MitKao_47, Morgushi_47, Morty_48, MrPhizzler_46, Mulan_47, Mutante_46, Nicole21_47, Numberten_47, Olak_46, Oline_46, Omniscient_47, Orfeu_46, Orion_48, Orwigg_46, PG1_48, Pacifista_46, Phamished_48, Phareon_47, PhatCats2014_48, PhatLouie_47, Pherdinand_48, PhrodoBaggins_47, Phunky_47, Piglet_0046, PinheadLarry_47, Pinkman_46, Placalicious_46, Plata_47, Plmatters_47, Podrick_47, Pops_47, Potter_46, Prickles_47, ProfessorX_47, QueenBeane_47, Quisquilliae_47, RedMaple_47, Ricotta_46, Riggan_47, Rimu_49, Robyn_46, Roliet_47, Roscoe_48, Samaymay_47, SassyCat97_46, Schadenfreude_46, Scoot17C_48, Scrick_47, Serendipity_47, Sheila_47, ShiVal_47, Simielle_46, SirBeauregard_47, Skippy_47, Slatt_47, Soile_47, Solosis_46, Sophia_46, Soto_47, Spartan300_47, Squiggle_47, Struggle_46, Suffolk_47, Surely_47, Swish_48, Telesworld_46, Thora_47, Timmi_46, TomBombadil_47, Tomlarah_47, Toni_46, Tooj_47, True_46, TyrionL_46, UAch1_47, Usavi_47, Valjean_47, Veritas_46, Virapocalypse_47, Virgeve_46, Wallhey_46,

Weher20_47, Windsor_46, Yoshand_48, YouGoGlencoco_47, Zaider_48, Zelda_47, Zonia_47,

Genes that have the "Most Annotated" start but do not call it:

- AngelCake_46, Apizium_47, Ashraf_47, Banjo_46, Basato_48, Caspiroi_48, Chah_49, CheetO_47, Chute_46, Colbert_47, Coletti_46, DoesntMatter_46, Fang_48, FluffyNinja_48, Giraffe_47, Gwennie1_47, Gyarad_0047, Harvey_47, Hertubise_47, ImtiyazSitla_47, Inverness_47, IsaacEli_48, JacAttac_48, Kikipoo_48, KlimbOn_47, LeeLot_47, Lopsy_46, Lulumae_46, Manad_46, Maskar_47, Mcshane_46, Megatron_48, Melc17_47, Mosaic_46, Murdoc_47, Nacho_0048, Nathan_48, Newman_47, Nyala_46, OSmaximus_48, Olive_47, OliverWalter_47, Oosterbaan_47, PhenghisKhan_46, Phergie_46, Phleuron_46, PhrankReynolds_45, Pipsqueak_47, Puhltonio_47, Riverton_46, Roy17_47, SDcharge11_47, Schueller_46, Selr12_47, Serpentine_0047, Sigman_48, SilverBell_47, Squid_47, Swiphy_49, TallGrassMM_47, ThreeOh3D2_48, Thunderbird_46, TooFast2Furius_49, Trypo_48, UncleHowie_47, Vaishali24_46, Vaticameos_43, Vista_47, Vivaldi_47, Vortex_47, Waterdiva_47, Xavier_46,

Genes that do not have the "Most Annotated" start:

- Ablatia_99, Ading_101, Adlitam_101, AksarBAT_40, AlanGrant_44, Aleemily_150, Alice_94, Amataga_101, AnarQue_42, ArcherS7_100, Archimedes_17, Asterius_104, Astraea_98, Atlantean_100, Audrick_103, Ava3_102, Babyland_102, BackyardAgain_98, BadAgartude_97, BananaFence_100, Bangla1971_102, Basquiat_98, BeanWater_93, Belfort_257, Belieber_97, BigCity_109, Bigswole_106, Bipolarisk_100, Blackbrain_96, Blackdragon_97, Blubba_90, Bonray_101, Bread_101, Breeniome_100, Burrough_101, Bxz1_99, Cactojaque_96, Cafasso_152, CaiB_42, Cali_97, Cane17_90, Capablanca_103, Caravan_96, Catera_98, Chargie21_98, CharlieB_97, ChaylaJr_96, ChickenPhender_97, Chomp_100, CindyLou_102, CloverMinnie_42, Coldpizza_43, Colt_91, Comrade_252, Concombre_108, DTDevon_102, Daffodil_106, DalanDe_65, Dandelion_108, Darko_101, DeejaClivia_90, Delilah_101, Delylah_104, Demodog_108, Derek_101, Dietrick_93, DirtMonster_95, Domi_95, DrPhinkDaddy_100, Drazdys_100, ET08_90, EasyJones_104, EggyFarm_109, EmToTheThree_104, EmmaElysia_101, Erdmann_102, ErnieJ_97, Essence_98, Evaa_40, Ewok_102, Flabslab_95, Fludd_102, Fongie_99, FoxtrotP1_101, FrayBell_106, Frizzle_18, FudgeTart_101, Gabriel_102, Gamgam_101, Ghobes_19, Ghost_100, Gizmo_105, GlutenPhree_100, Grasshills_108, Greely_236, Grungle_89, Gustav_54, Guwapp_100, Halldule_95, HyRo_93, I3_107, IkeLoa_95, InigoMontoya_102, InterFolia_109, Iota_96, Issimir_100, Izajani_101, JPickles_99, Janiyra_103, JayJay_107, Jaygup_101, Jedediah_104, Jemmno_101, Jessibeth14_100, Jezreel_99, JigglyPuff_109, JulietS_96, JustHall_98, Kamryn_101, Karp_256, Kboogie_105, Khaleesi_100, Koguma_98, LRRHood_96, Latch_101, Lee7_99, Lethe_101, LifeSavor_100, LinStu_101, Littleton_101, Loanshark_101, LolaVinca_102, LordLeafolot_105, Lukilu_92, Maby2021_101, Mahdia_50, MakoManhole_42, Mangeria_101, Matsumoto_98, McGee_103, McWolfish_99, Megamind_100, Melpomini_95, Merry_, MikeLiesIn_102, Mikro_99, MoMoMixon_102, ModicumRichard_152, Momo_100, Morgana_159, Morizzled23_101, MossRose_42, Myrna_229, Mysterious_47, NHagos_40, Naija_100, Napoleon13_97, Nappy_104, Naval22_106, NedWong_102, Nehemiah_45, Ngannou_97, Nidhogg_102, NoodleTree_108, Norm_102, NuevoMundo_107, ObLaDi_152, ParkTD_102, Patter_101, PenguinLover67_48, Phabba_239, Phelemich_45, Phlegm_103, Phox_98, Phusco_101, Pier_105, Pinkcreek_92, Pio_105, Pivoine_100, Pleione_104, Primadonna_95, Puppies_48, PurduePete_101, QBert_95, Quasimodo_102, Quesadilla_48, Rabinovish_99,

Rahel_100, Reprobate_46, Rizal_97, RoMag_96, Ronan_95, Roots515_100, SVoro_99, Saguaro_48, Salacia_105, Sauce_102, ScoobyDoobyDoo_226, ScottMcG_98, Sebata_103, Shaqnato_94, Shelob_103, ShiaLabeouf_100, Shifa_90, Shnickers_101, Shrimp_101, SilverDipper_102, SmallFry_101, SparkleGoddess_256, Spec_97, Specks_106, Sprinklers_97, Spud_101, SrishMeg2525_100, StephanieG_100, Stigma_254, StubbySaigey_104, Stubby_94, Sunny_, Tainan_105, Teardrop_100, TinyTim_101, Tonenili_116, Tortoise16_98, Trinitium_98, Turret_96, Tyke_102, ValleyTerrace_101, Vincenzo_43, Wally_100, Westy_259, Widow_49, Willis_102, Wooper_42, Yassified_98, YemiJoy2021_102, Yeshua_42, YoungMoneyMata_102, Yucca_101, Zalkecks_102, Zeenon_103, ZygoTaiga_100,

Summary by start number:

Start 8:

- Found in 54 of 531 (10.2%) of genes in pham
- Manual Annotations of this start: 5 of 475
- Called 9.3% of time when present
- Phage (with cluster) where this start called: Astraea_98 (C1), Gamgam_101 (C1), JPickles_99 (C1), LifeSavor_100 (C1), Rizal_97 (C1),

Start 17:

- Found in 276 of 531 (52.0%) of genes in pham
- Manual Annotations of this start: 57 of 475
- Called 24.3% of time when present
- Phage (with cluster) where this start called: AngelCake_46 (B1), Apizium_47 (B1), Ashraf_47 (B1), Banjo_46 (B1), Basato_48 (B1), CaspiBoi_48 (B1), Chah_49 (B1), CheetO_47 (B1), Chute_46 (B1), Colbert_47 (B1), Coletti_46 (B1), DoesntMatter_46 (B1), Fang_48 (B1), FluffyNinja_48 (B1), Giraffe_47 (B1), Gwennie1_47 (B1), Gyarad_0047 (B1), Harvey_47 (B1), Hertubise_47 (B1), ImtiyazSitla_47 (B1), Inverness_47 (B1), IsaacEli_48 (B1), Kikipoo_48 (B1), KlimbOn_47 (B1), LeeLot_47 (B1), Lopsy_46 (B1), Lulumae_46 (B1), Maskar_47 (B1), Mcshane_46 (B1), Megatron_48 (B1), Melc17_47 (B1), Mosaic_46 (B1), Murdoc_47 (B1), Nacho_0048 (B1), Nathan_48 (B1), Newman_47 (B1), Nyala_46 (B1), OSmaximus_48 (B1), Olive_47 (B1), OliverWalter_47 (B1), Oosterbaan_47 (B1), PhenghisKhan_46 (B1), Phergie_46 (B1), Phleuron_46 (B1), PhrankReynolds_45 (B1), Pipsqueak_47 (B1), Puhltonio_47 (B1), Riverton_46 (B1), Roy17_47 (B1), Schueller_46 (B1), Selr12_47 (B1), Serpentine_0047 (B1), Sigman_48 (B1), SilverBell_47 (B1), Squid_47 (B1), Swiphy_49 (B1), TallGrassMM_47 (B1), ThreeOh3D2_48 (B1), Thunderbird_46 (B1), TooFast2Furius_49 (B1), Trypo_48 (B1), UncleHowie_47 (B1), Vaishali24_46 (B1), Vaticameos_43 (B1), Vortex_47 (B1), Waterdiva_47 (B1), Xavier_46 (B1),

Start 18:

- Found in 1 of 531 (0.2%) of genes in pham
- Manual Annotations of this start: 1 of 475
- Called 100.0% of time when present
- Phage (with cluster) where this start called: Mahdia_50 (CD),

Start 19:

- Found in 276 of 531 (52.0%) of genes in pham
- Manual Annotations of this start: 3 of 475
- Called 1.1% of time when present
- Phage (with cluster) where this start called: JacAttac_48 (B1), Vista_47 (B1), Vivaldi_47 (B1),

Start 20:

- Found in 2 of 531 (0.4%) of genes in pham
- No Manual Annotations of this start.
- Called 50.0% of time when present
- Phage (with cluster) where this start called: AksarBAT_40 (DR),

Start 21:

- Found in 277 of 531 (52.2%) of genes in pham
- Manual Annotations of this start: 1 of 475
- Called 0.4% of time when present
- Phage (with cluster) where this start called: Manad_46 (B1),

Start 25:

- Found in 2 of 531 (0.4%) of genes in pham
- Manual Annotations of this start: 2 of 475
- Called 100.0% of time when present
- Phage (with cluster) where this start called: AlanGrant_44 (B4), Vincenzo_43 (B4),

Start 28:

- Found in 11 of 531 (2.1%) of genes in pham
- Manual Annotations of this start: 8 of 475
- Called 90.9% of time when present
- Phage (with cluster) where this start called: AnarQue_42 (DR), CaiB_42 (DR), CloverMinnie_42 (DR), Coldpizza_43 (DR), Evaa_40 (DR), MakoManhole_42 (DR), MossRose_42 (DR), NHagos_40 (DR), Wooper_42 (DR), Yeshua_42 (DR),

Start 29:

- Found in 213 of 531 (40.1%) of genes in pham
- Manual Annotations of this start: 172 of 475
- Called 93.4% of time when present
- Phage (with cluster) where this start called: Ablatia_99 (C1), Ading_101 (C1), Adlitam_101 (C1), Alice_94 (C1), Amataga_101 (C1), ArcherS7_100 (C1), Asterius_104 (C1), Atlantean_100 (C1), Audrick_103 (C1), Ava3_102 (C1), Babyland_102 (C1), BackyardAgain_98 (C1), BadAgartude_97 (C1), BananaFence_100 (C1), Bangla1971_102 (C1), Basquiat_98 (C1), BeanWater_93 (C1), Belieber_97 (C1), BigCity_109 (C1), Bigswole_106 (C1), Bipolarisk_100 (C1), Blackbrain_96 (C1), Blackdragon_97 (C1), Blubba_90 (C1), Bonray_101 (C1), Bread_101 (C1), Breeniome_100 (C1), Burrough_101 (C1), Bxz1_99 (C1), Cactojaque_96 (C1), Cali_97 (C1), Cane17_90 (C1), Capablanca_103 (C1), Caravan_96 (C1), Catera_98 (C1), Chargie21_98 (C1), CharlieB_97 (C1), ChaylaJr_96 (C1), ChickenPhender_97 (C1), Chomp_100 (C1), CindyLou_102 (C1), Colt_91 (C1), Concombre_108 (C1), DTDevon_102 (C1), Daffodil_106 (C1), Dandelion_108 (C1), Darko_101 (C1), DeejaClivia_90 (C1), Delilah_101 (C1), Delylah_104 (C1), Demodog_108 (C1), Derek_101 (C1), Dietrick_93 (C1), DirtMonster_95 (C1), Domi_95 (C1), DrPhinkDaddy_100 (C1), Drazdys_100 (C1), ET08_90 (C1), EasyJones_104 (C1), EggyFarm_109 (C1), EmToTheThree_104 (C1), EmmaElysia_101 (C1), Erdmann_102 (C1), ErnieJ_97 (C1), Essence_98 (C1), Ewok_102 (C1), Flabslab_95 (C1), Fludd_102 (C1), Fongie_99 (C1), FoxtrotP1_101 (C1), FrayBell_106 (C1), FudgeTart_101 (C1), Gabriel_102 (C1), Ghost_100 (C1), Gizmo_105 (C1), GlutenPhree_100 (C1), Grasshills_108 (C1), Grungle_89 (C1), Guwapp_100 (C1), Halldule_95 (C1), HyRo_93 (C1), I3_107 (C1), IkeLoa_95 (C1), InigoMontoya_102 (C1), InterFolia_109 (C1), Iota_96 (C1), Issimir_100 (C1),

Izajani_101 (C1), Janiyra_103 (C1), JayJay_107 (C1), Jaygup_101 (C1), Jedediah_104 (C1), Jemmno_101 (C1), Jessibeth14_100 (C1), Jezreel_99 (C1), JigglyPuff_109 (C1), JulietS_96 (C1), JustHall_98 (C1), Kamryn_101 (C1), Kboogie_105 (C1), Khaleesi_100 (C1), Koguma_98 (C1), LRRHood_96 (C1), Latch_101 (C1), Lee7_99 (C1), Lethe_101 (C1), LinStu_101 (C1), Littleton_101 (C1), Loanshark_101 (C1), LolaVinca_102 (C1), LordLeafolot_105 (C1), Lukilu_92 (C1), Maby2021_101 (C1), Mangeria_101 (C1), Matsumoto_98 (C1), McGee_103 (C1), McWolfish_99 (C1), Megamind_100 (C1), Melpomini_95 (C1), MikeLiesIn_102 (C1), Mikro_99 (C1), MoMoMixon_102 (C1), Momo_100 (C1), Morizzled23_101 (C1), Myrna_229 (C2), Mysterious_47 (B5), Naija_100 (C1), Napoleon13_97 (C1), Nappy_104 (C1), Naval22_106 (C1), NedWong_102 (C1), Nehemiah_45 (B5), Ngannou_97 (C1), Nidhogg_102 (C1), NoodleTree_108 (C1), Norm_102 (C1), NuevoMundo_107 (C1), ParkTD_102 (C1), Patter_101 (C1), Phelemich_45 (B5), Phlegm_103 (C1), Phox_98 (C1), Phusco_101 (C1), Pier_105 (C1), Pinkcreek_92 (C1), Pio_105 (C1), Pivoine_100 (C1), Pleione_104 (C1), Primadonna_95 (C1), PurduePete_101 (C1), QBert_95 (C1), Quasimodo_102 (C1), Rabinovich_99 (C1), Rahel_100 (C1), Reprobate_46 (B5), RoMag_96 (C1), Ronan_95 (C1), Roots515_100 (C1), SDcharge11_47 (B1), SVoro_99 (C1), Salacia_105 (C1), Sauce_102 (C1), ScoobyDoobyDoo_226 (C2), ScottMcG_98 (C1), Sebata_103 (C1), Shaqato_94 (C1), Shelob_103 (C1), ShiaLabeouf_100 (C1), Shifa_90 (C1), Shnickers_101 (C1), Shrimp_101 (C1), SilverDipper_102 (C1), SmallFry_101 (C1), Spec_97 (C1), Specks_106 (C1), Sprinklers_97 (C1), Spud_101 (C1), SrishMeg2525_100 (C1), StephanieG_100 (C1), StubbySaigey_104 (C1), Stubby_94 (C1), Tainan_105 (C1), Teardrop_100 (C1), TinyTim_101 (C1), Tonenili_116 (C1), Tortoise16_98 (C1), Trinitium_98 (C1), Turret_96 (C1), Tyke_102 (C1), ValleyTerrace_101 (C1), Wally_100 (C1), Willis_102 (C1), Yassified_98 (C1), YemiJoy2021_102 (C1), YoungMoneyMata_102 (C1), Yucca_101 (C1), Zalkecks_102 (C1), Zeenon_103 (C1), ZygoTaiga_100 (C1),

Start 30:

- Found in 2 of 531 (0.4%) of genes in pham
- Manual Annotations of this start: 2 of 475
- Called 100.0% of time when present
- Phage (with cluster) where this start called: Puppies_48 (CD), Widow_49 (CD),

Start 31:

- Found in 2 of 531 (0.4%) of genes in pham
- Manual Annotations of this start: 1 of 475
- Called 100.0% of time when present
- Phage (with cluster) where this start called: Greely_236 (C2), Phabba_239 (C2),

Start 33:

- Found in 3 of 531 (0.6%) of genes in pham
- Manual Annotations of this start: 3 of 475
- Called 100.0% of time when present
- Phage (with cluster) where this start called: Archimedes_17 (DA), Frizzle_18 (DA), Ghobes_19 (DA),

Start 34:

- Found in 3 of 531 (0.6%) of genes in pham
- Manual Annotations of this start: 3 of 475
- Called 100.0% of time when present

- Phage (with cluster) where this start called: PenguinLover67_48 (B9), Quesadilla_48 (B9), Saguario_48 (B7),

Start 35:

- Found in 1 of 531 (0.2%) of genes in pham
- Manual Annotations of this start: 1 of 475
- Called 100.0% of time when present
- Phage (with cluster) where this start called: DalanDe_65 (DQ),

Start 36:

- Found in 289 of 531 (54.4%) of genes in pham
- Manual Annotations of this start: 204 of 475
- Called 75.1% of time when present
- Phage (with cluster) where this start called: ABU_48 (B1), AbsoluteMadLad_46 (B1), Adriana_48 (B1), Aelin_46 (B1), AltPhacts_47 (B1), Altwerkus_46 (B1), Anderson_47 (B1), Andre_48 (B1), Antonia_46 (B1), Badfish_48 (B1), BatteryCK_46 (B1), Beaglebox_46 (B1), Bishoperium_46 (B1), BlackStallion_48 (B1), BlueHusk_47 (B1), Bluephacebaby_46 (B1), Boehler_47 (B1), Brilliant_47 (B1), Buckeye_47 (B1), Burr_46 (B1), CamL_47 (B1), CampRoach_48 (B1), Cannibal_47 (B1), Carthage_45 (B1), Chaelin_47 (B1), Charles1_47 (B1), CharlieGBrown_46 (B1), Cher_46 (B1), Childish_46 (B1), Chipette_48 (B1), Chorkpop_47 (B1), Chunky_47 (B1), Cobra_47 (B1), Cornbread_47 (B1), Cornobble_46 (B1), Cosmolli16_46 (B1), Craff_48 (B1), Crownjwl_47 (B1), DaddyDaniels_47 (B1), Daffy_47 (B1), Daka_48 (B1), Dati_47 (B1), DelRivs_46 (B1), Derpp_46 (B1), Dice_46 (B1), Dingo_47 (B1), Dione_46 (B1), DirtJuice_47 (B1), Doddsville_47 (B1), DonSancho_46 (B1), DuchessDung_46 (B1), Duggie_46 (B1), Durga_48 (B1), ElvisPhasley_49 (B1), Emiris_48 (B1), EmpTee_47 (B1), Eremos_47 (B1), Etaye_47 (B1), Eugenia_47 (B1), Fozzie_46 (B1), Frankicide_47 (B1), Freya_46 (B1), FriarPreacher_46 (B1), Fringe_48 (B1), FugateOSU_46 (B1), Gareth_46 (B1), GeneCoco_47 (B1), Gophee_47 (B1), Grand2040_46 (B1), Gwilliam_47 (B1), HSavage_47 (B1), Haimas_47 (B1), Haleema_46 (B1), Hamish_47 (B1), Hartsy_47 (B1), Held_47 (B1), HenryJackson_46 (B1), Hetaeria_47 (B1), HighStump_47 (B1), Hocus_46 (B1), Horchata_47 (B1), Inchworm_48 (B1), Iridessa_48 (B1), Iridoclysis_47 (B1), JDog_46 (B1), JakeO_46 (B1), JangoPhett_47 (B1), Jesabah_47 (B1), Jillium_46 (B1), Jiminy_46 (B1), Jiraiya_46 (B1), KLucky39_47 (B1), Kahve_46 (B1), Kailash_47 (B1), Katniss_48 (B1), Keitherie_47 (B1), Khan1_47 (B1), Kimbrough_47 (B1), KingTut_38 (B1), KingVeVeVe_47 (B1), Kloppinator_47 (B1), Kwadwo_46 (B1), Kwksand96_46 (B1), Labeouficaum_46 (B1), LasagnaCat_48 (B1), Lasso_47 (B1), Lego3393_46 (B1), Legolas_47 (B1), LeiMonet_48 (B1), LemonSlice_47 (B1), Longacauda_46 (B1), LostAndPhound_46 (B1), LuckyMarjie_46 (B1), Lulwa_47 (B1), Lumine_46 (B1), MRabcd_46 (B1), Mag7_46 (B1), Magic8_47 (B1), Mana_46 (B1), Maru_46 (B1), Matalotodo_47 (B1), Mecca_46 (B1), Megamind20_47 (B1), MelsMeow_47 (B1), Mesh1_47 (B1), Mesmerelda_48 (B1), MichaelPhcott_46 (B1), Mikota_47 (B1), MiniBoss_47 (B1), MitKao_47 (B1), Morgushi_47 (B1), Morty_48 (B1), MrPhizzler_46 (B1), Mulan_47 (B1), Mutante_46 (B1), Nicole21_47 (B1), Numberten_47 (B1), Olak_46 (B1), Oline_46 (B1), Omniscient_47 (B1), Orfeu_46 (B1), Orion_48 (B1), Orwigg_46 (B1), PG1_48 (B1), Pacifista_46 (B1), Phamished_48 (B1), Phareon_47 (B1), PhatCats2014_48 (B1), PhatLouie_47 (B1), Pherdinand_48 (B1), PhrodoBaggins_47 (B1), Phunky_47 (B1), Piglet_0046 (B1), PinheadLarry_47 (B1), Pinkman_46 (B1), Placalicious_46 (B1), Plata_47 (B1), Plmatters_47 (B1), Podrick_47 (B1), Pops_47 (B1), Potter_46 (B1), Prickles_47 (B1), ProfessorX_47 (B1), QueenBeane_47 (B1), Quisquillae_47 (B1), RedMaple_47 (B1), Ricotta_46 (B1), Riggan_47 (B1), Rimu_49 (B1), Robyn_46 (B1), Roliet_47 (B1), Roscoe_48

(B1), Samaymay_47 (B1), SassyCat97_46 (B1), Schadenfreude_46 (B1), Scoot17C_48 (B1), Scrick_47 (B1), Serendipity_47 (B1), Sheila_47 (B1), ShiVal_47 (B1), Simielle_46 (B1), SirBeauregard_47 (B1), Skippy_47 (B1), Slatt_47 (B1), Soile_47 (B1), Solosis_46 (B1), Sophia_46 (B1), Soto_47 (B1), Spartan300_47 (B1), Squiggle_47 (B1), Struggle_46 (B1), Suffolk_47 (B1), Surely_47 (B1), Swish_48 (B1), Telesworld_46 (B1), Thora_47 (B1), Timmi_46 (B1), TomBombadil_47 (B1), Tomlarah_47 (B1), Toni_46 (B1), Tooj_47 (B1), True_46 (B1), TyrionL_46 (B1), UAch1_47 (B1), Usavi_47 (B1), Valjean_47 (B1), Veritas_46 (B1), Virapocalypse_47 (B1), Virgeve_46 (B1), Wallhey_46 (B1), Weher20_47 (B1), Windsor_46 (B1), Yoshand_48 (B1), YouGoGlencoco_47 (B1), Zaider_48 (B1), Zelda_47 (B1), Zonia_47 (B1),

Start 49:

- Found in 6 of 531 (1.1%) of genes in pham
- Manual Annotations of this start: 4 of 475
- Called 83.3% of time when present
- Phage (with cluster) where this start called: Aleemily_150 (DZ), Cafasso_152 (DZ), ModicumRichard_152 (DZ), Morgana_159 (DZ), ObLaDi_152 (DZ),

Start 51:

- Found in 2 of 531 (0.4%) of genes in pham
- Manual Annotations of this start: 2 of 475
- Called 100.0% of time when present
- Phage (with cluster) where this start called: Merry_ (EC), Sunny_ (EC),

Start 52:

- Found in 3 of 531 (0.6%) of genes in pham
- Manual Annotations of this start: 1 of 475
- Called 33.3% of time when present
- Phage (with cluster) where this start called: Gustav_54 (CD),

Start 58:

- Found in 6 of 531 (1.1%) of genes in pham
- Manual Annotations of this start: 5 of 475
- Called 100.0% of time when present
- Phage (with cluster) where this start called: Belfort_257 (BK1), Comrade_252 (BK1), Karp_256 (BK1), SparkleGoddess_256 (BK1), Stigma_254 (BK1), Westy_259 (BK1),

Summary by clusters:

There are 14 clusters represented in this pham: DQ, EC, CD, B4, B5, B7, DZ, B1, C2, C1, DA, DR, B9, BK1,

Info for manual annotations of cluster B1:

- Start number 17 was manually annotated 57 times for cluster B1.
- Start number 19 was manually annotated 3 times for cluster B1.
- Start number 21 was manually annotated 1 time for cluster B1.
- Start number 29 was manually annotated 1 time for cluster B1.
- Start number 36 was manually annotated 204 times for cluster B1.

Info for manual annotations of cluster B4:

- Start number 25 was manually annotated 2 times for cluster B4.

Info for manual annotations of cluster B5:

- Start number 29 was manually annotated 2 times for cluster B5.

Info for manual annotations of cluster B7:

- Start number 34 was manually annotated 1 time for cluster B7.

Info for manual annotations of cluster B9:

- Start number 34 was manually annotated 2 times for cluster B9.

Info for manual annotations of cluster BK1:

- Start number 58 was manually annotated 5 times for cluster BK1.

Info for manual annotations of cluster C1:

- Start number 8 was manually annotated 5 times for cluster C1.
- Start number 29 was manually annotated 167 times for cluster C1.

Info for manual annotations of cluster C2:

- Start number 29 was manually annotated 2 times for cluster C2.
- Start number 31 was manually annotated 1 time for cluster C2.

Info for manual annotations of cluster CD:

- Start number 18 was manually annotated 1 time for cluster CD.
- Start number 30 was manually annotated 2 times for cluster CD.
- Start number 52 was manually annotated 1 time for cluster CD.

Info for manual annotations of cluster DA:

- Start number 33 was manually annotated 3 times for cluster DA.

Info for manual annotations of cluster DQ:

- Start number 35 was manually annotated 1 time for cluster DQ.

Info for manual annotations of cluster DR:

- Start number 28 was manually annotated 8 times for cluster DR.

Info for manual annotations of cluster DZ:

- Start number 49 was manually annotated 4 times for cluster DZ.

Info for manual annotations of cluster EC:

- Start number 51 was manually annotated 2 times for cluster EC.

Gene Information:

Gene: ABU_48 Start: 40410, Stop: 39850, Start Num: 36

Candidate Starts for ABU_48:

(Start: 17 @40494 has 57 MA's), (Start: 19 @40488 has 3 MA's), (Start: 21 @40485 has 1 MA's),
(Start: 36 @40410 has 204 MA's), (47, 40341), (48, 40338), (50, 40335), (65, 40281), (108, 40068),

Gene: Ablatia_99 Start: 50692, Stop: 51324, Start Num: 29

Candidate Starts for Ablatia_99:

(Start: 29 @50692 has 172 MA's), (98, 51031), (110, 51109), (129, 51217), (141, 51319),

Gene: AbsoluteMadLad_46 Start: 40287, Stop: 39727, Start Num: 36

Candidate Starts for AbsoluteMadLad_46:

(Start: 17 @40371 has 57 MA's), (Start: 19 @40365 has 3 MA's), (Start: 21 @40362 has 1 MA's), (Start: 36 @40287 has 204 MA's), (47, 40218), (48, 40215), (50, 40212), (65, 40158), (108, 39945), (139, 39738),

Gene: Ading_101 Start: 51076, Stop: 51708, Start Num: 29

Candidate Starts for Ading_101:

(Start: 8 @50989 has 5 MA's), (Start: 29 @51076 has 172 MA's), (98, 51415), (110, 51493), (129, 51601), (141, 51703),

Gene: Adlitam_101 Start: 51093, Stop: 51725, Start Num: 29

Candidate Starts for Adlitam_101:

(Start: 8 @51006 has 5 MA's), (Start: 29 @51093 has 172 MA's), (98, 51432), (110, 51510), (129, 51618), (141, 51720),

Gene: Adriana_48 Start: 40408, Stop: 39848, Start Num: 36

Candidate Starts for Adriana_48:

(Start: 17 @40492 has 57 MA's), (Start: 19 @40486 has 3 MA's), (Start: 21 @40483 has 1 MA's), (Start: 36 @40408 has 204 MA's), (47, 40339), (48, 40336), (50, 40333), (65, 40279), (108, 40066),

Gene: Aelin_46 Start: 39839, Stop: 39279, Start Num: 36

Candidate Starts for Aelin_46:

(Start: 17 @39923 has 57 MA's), (Start: 19 @39917 has 3 MA's), (Start: 21 @39914 has 1 MA's), (Start: 36 @39839 has 204 MA's), (47, 39770), (48, 39767), (50, 39764), (90, 39599), (108, 39497), (139, 39290),

Gene: AksarBAT_40 Start: 34482, Stop: 33889, Start Num: 20

Candidate Starts for AksarBAT_40:

(1, 34971), (2, 34806), (5, 34560), (10, 34527), (16, 34491), (20, 34482), (Start: 28 @34452 has 8 MA's), (44, 34383), (65, 34296), (79, 34221), (104, 34131), (118, 34044), (136, 33909),

Gene: AlanGrant_44 Start: 41068, Stop: 40448, Start Num: 25

Candidate Starts for AlanGrant_44:

(Start: 25 @41068 has 2 MA's), (48, 40942), (59, 40909), (66, 40882), (71, 40849), (89, 40774), (93, 40768), (104, 40702), (117, 40621), (133, 40528), (139, 40459),

Gene: Aleemily_150 Start: 79028, Stop: 78519, Start Num: 49

Candidate Starts for Aleemily_150:

(37, 79109), (45, 79070), (Start: 49 @79028 has 4 MA's), (63, 78986), (80, 78881), (92, 78836), (105, 78764), (126, 78647), (135, 78563),

Gene: Alice_94 Start: 49991, Stop: 50623, Start Num: 29

Candidate Starts for Alice_94:

(Start: 29 @49991 has 172 MA's), (98, 50330), (110, 50408), (129, 50516), (141, 50618),

Gene: AltPhacts_47 Start: 40259, Stop: 39699, Start Num: 36

Candidate Starts for AltPhacts_47:

(Start: 29 @40301 has 172 MA's), (Start: 36 @40259 has 204 MA's), (47, 40190), (48, 40187), (50, 40184), (108, 39917), (121, 39851), (139, 39710),

Gene: Altwerkus_46 Start: 39966, Stop: 39406, Start Num: 36

Candidate Starts for Altwerkus_46:

(Start: 17 @40050 has 57 MA's), (Start: 19 @40044 has 3 MA's), (Start: 21 @40041 has 1 MA's),
(Start: 36 @39966 has 204 MA's), (47, 39897), (48, 39894), (50, 39891), (90, 39726), (108, 39624),
(139, 39417),

Gene: Amataga_101 Start: 50338, Stop: 50970, Start Num: 29

Candidate Starts for Amataga_101:

(Start: 8 @50251 has 5 MA's), (Start: 29 @50338 has 172 MA's), (98, 50677), (110, 50755), (129,
50863), (141, 50965),

Gene: AnarQue_42 Start: 35868, Stop: 35293, Start Num: 28

Candidate Starts for AnarQue_42:

(Start: 28 @35868 has 8 MA's), (38, 35829), (64, 35718), (73, 35679), (99, 35556), (102, 35544), (104,
35535), (109, 35493), (110, 35490), (113, 35478),

Gene: Anderson_47 Start: 40265, Stop: 39705, Start Num: 36

Candidate Starts for Anderson_47:

(Start: 17 @40349 has 57 MA's), (Start: 19 @40343 has 3 MA's), (Start: 21 @40340 has 1 MA's),
(Start: 36 @40265 has 204 MA's), (47, 40196), (48, 40193), (50, 40190), (65, 40136), (108, 39923),
(139, 39716),

Gene: Andre_48 Start: 40402, Stop: 39842, Start Num: 36

Candidate Starts for Andre_48:

(Start: 17 @40486 has 57 MA's), (Start: 19 @40480 has 3 MA's), (Start: 21 @40477 has 1 MA's),
(Start: 36 @40402 has 204 MA's), (47, 40333), (48, 40330), (50, 40327), (108, 40060),

Gene: AngelCake_46 Start: 40371, Stop: 39727, Start Num: 17

Candidate Starts for AngelCake_46:

(Start: 17 @40371 has 57 MA's), (Start: 19 @40365 has 3 MA's), (Start: 21 @40362 has 1 MA's),
(Start: 36 @40287 has 204 MA's), (47, 40218), (48, 40215), (50, 40212), (65, 40158), (108, 39945),
(139, 39738),

Gene: Antonia_46 Start: 39839, Stop: 39279, Start Num: 36

Candidate Starts for Antonia_46:

(Start: 17 @39923 has 57 MA's), (Start: 19 @39917 has 3 MA's), (Start: 21 @39914 has 1 MA's),
(Start: 36 @39839 has 204 MA's), (47, 39770), (48, 39767), (50, 39764), (90, 39599), (108, 39497),
(139, 39290),

Gene: Apizium_47 Start: 40250, Stop: 39606, Start Num: 17

Candidate Starts for Apizium_47:

(Start: 17 @40250 has 57 MA's), (Start: 19 @40244 has 3 MA's), (Start: 21 @40241 has 1 MA's),
(Start: 36 @40166 has 204 MA's), (47, 40097), (48, 40094), (50, 40091), (65, 40037), (108, 39824),
(139, 39617),

Gene: ArcherS7_100 Start: 50656, Stop: 51288, Start Num: 29

Candidate Starts for ArcherS7_100:

(Start: 8 @50569 has 5 MA's), (Start: 29 @50656 has 172 MA's), (98, 50995), (110, 51073), (129,
51181), (141, 51283),

Gene: Archimedes_17 Start: 16783, Stop: 16172, Start Num: 33

Candidate Starts for Archimedes_17:

(Start: 33 @16783 has 3 MA's), (46, 16720), (101, 16441), (112, 16372), (114, 16360), (116, 16351),
(118, 16333), (130, 16267), (139, 16183),

Gene: Ashraf_47 Start: 40051, Stop: 39407, Start Num: 17
Candidate Starts for Ashraf_47:
(Start: 17 @40051 has 57 MA's), (Start: 19 @40045 has 3 MA's), (Start: 21 @40042 has 1 MA's),
(Start: 36 @39967 has 204 MA's), (47, 39898), (48, 39895), (50, 39892), (65, 39838), (108, 39625),

Gene: Asterius_104 Start: 51325, Stop: 51963, Start Num: 29
Candidate Starts for Asterius_104:
(Start: 29 @51325 has 172 MA's), (98, 51670), (110, 51748), (129, 51856), (141, 51958),

Gene: Astraea_98 Start: 50020, Stop: 50739, Start Num: 8
Candidate Starts for Astraea_98:
(Start: 8 @50020 has 5 MA's), (Start: 29 @50107 has 172 MA's), (98, 50446), (110, 50524), (129,
50632), (141, 50734),

Gene: Atlantean_100 Start: 50338, Stop: 50970, Start Num: 29
Candidate Starts for Atlantean_100:
(Start: 8 @50251 has 5 MA's), (Start: 29 @50338 has 172 MA's), (98, 50677), (110, 50755), (129,
50863), (141, 50965),

Gene: Audrick_103 Start: 50317, Stop: 50949, Start Num: 29
Candidate Starts for Audrick_103:
(Start: 8 @50230 has 5 MA's), (Start: 29 @50317 has 172 MA's), (98, 50656), (110, 50734), (129,
50842), (141, 50944),

Gene: Ava3_102 Start: 51251, Stop: 51883, Start Num: 29
Candidate Starts for Ava3_102:
(Start: 29 @51251 has 172 MA's), (98, 51590), (129, 51776), (141, 51878),

Gene: Babyland_102 Start: 50426, Stop: 51058, Start Num: 29
Candidate Starts for Babyland_102:
(Start: 29 @50426 has 172 MA's), (98, 50765), (110, 50843), (129, 50951), (141, 51053),

Gene: BackyardAgain_98 Start: 50256, Stop: 50888, Start Num: 29
Candidate Starts for BackyardAgain_98:
(Start: 29 @50256 has 172 MA's), (98, 50595), (110, 50673), (129, 50781), (141, 50883),

Gene: BadAgartude_97 Start: 51776, Stop: 52408, Start Num: 29
Candidate Starts for BadAgartude_97:
(Start: 8 @51689 has 5 MA's), (Start: 29 @51776 has 172 MA's), (98, 52115), (110, 52193), (129,
52301), (141, 52403),

Gene: Badfish_48 Start: 40433, Stop: 39873, Start Num: 36
Candidate Starts for Badfish_48:
(Start: 17 @40517 has 57 MA's), (Start: 19 @40511 has 3 MA's), (Start: 21 @40508 has 1 MA's),
(Start: 36 @40433 has 204 MA's), (47, 40364), (48, 40361), (50, 40358), (65, 40304), (108, 40091),

Gene: BananaFence_100 Start: 51510, Stop: 52142, Start Num: 29
Candidate Starts for BananaFence_100:
(Start: 29 @51510 has 172 MA's), (98, 51849), (110, 51927), (129, 52035), (141, 52137),

Gene: Bangla1971_102 Start: 50786, Stop: 51418, Start Num: 29
Candidate Starts for Bangla1971_102:

(Start: 8 @50699 has 5 MA's), (Start: 29 @50786 has 172 MA's), (98, 51125), (110, 51203), (129, 51311), (141, 51413),

Gene: Banjo_46 Start: 40048, Stop: 39410, Start Num: 17

Candidate Starts for Banjo_46:

(Start: 17 @40048 has 57 MA's), (Start: 19 @40042 has 3 MA's), (Start: 21 @40039 has 1 MA's), (Start: 36 @39964 has 204 MA's), (47, 39901), (48, 39898), (50, 39895), (65, 39841), (108, 39628), (121, 39562), (139, 39421),

Gene: Basato_48 Start: 40633, Stop: 39989, Start Num: 17

Candidate Starts for Basato_48:

(Start: 17 @40633 has 57 MA's), (Start: 19 @40627 has 3 MA's), (Start: 21 @40624 has 1 MA's), (Start: 36 @40549 has 204 MA's), (47, 40480), (48, 40477), (50, 40474), (65, 40420), (108, 40207), (139, 40000),

Gene: Basquiat_98 Start: 50225, Stop: 50857, Start Num: 29

Candidate Starts for Basquiat_98:

(Start: 29 @50225 has 172 MA's), (98, 50564), (110, 50642), (129, 50750), (141, 50852),

Gene: BatteryCK_46 Start: 39892, Stop: 39332, Start Num: 36

Candidate Starts for BatteryCK_46:

(Start: 17 @39976 has 57 MA's), (Start: 19 @39970 has 3 MA's), (Start: 21 @39967 has 1 MA's), (Start: 36 @39892 has 204 MA's), (48, 39820), (50, 39817), (65, 39763), (90, 39652), (108, 39550), (139, 39343),

Gene: Beaglebox_46 Start: 39985, Stop: 39431, Start Num: 36

Candidate Starts for Beaglebox_46:

(Start: 17 @40069 has 57 MA's), (Start: 19 @40063 has 3 MA's), (Start: 21 @40060 has 1 MA's), (Start: 36 @39985 has 204 MA's), (47, 39922), (48, 39919), (50, 39916), (65, 39862), (108, 39649), (121, 39583), (139, 39442),

Gene: BeanWater_93 Start: 51106, Stop: 51738, Start Num: 29

Candidate Starts for BeanWater_93:

(Start: 29 @51106 has 172 MA's), (98, 51445), (110, 51523), (129, 51631), (141, 51733),

Gene: Belfort_257 Start: 123112, Stop: 123585, Start Num: 58

Candidate Starts for Belfort_257:

(53, 123094), (Start: 58 @123112 has 5 MA's), (85, 123238), (86, 123241), (95, 123274), (106, 123349), (110, 123385), (122, 123442), (126, 123460), (136, 123565),

Gene: Belieber_97 Start: 50572, Stop: 51204, Start Num: 29

Candidate Starts for Belieber_97:

(Start: 29 @50572 has 172 MA's), (98, 50911), (110, 50989), (129, 51097), (141, 51199),

Gene: BigCity_109 Start: 53767, Stop: 54399, Start Num: 29

Candidate Starts for BigCity_109:

(Start: 29 @53767 has 172 MA's), (98, 54106), (110, 54184), (129, 54292), (141, 54394),

Gene: Bigswole_106 Start: 54293, Stop: 54931, Start Num: 29

Candidate Starts for Bigswole_106:

(4, 54182), (Start: 29 @54293 has 172 MA's), (98, 54638), (110, 54716), (129, 54824), (141, 54926),

Gene: Bipolarisk_100 Start: 51503, Stop: 52141, Start Num: 29

Candidate Starts for Bipolarisk_100:

(Start: 29 @51503 has 172 MA's), (98, 51848), (110, 51926), (129, 52034), (141, 52136),

Gene: Bishoperium_46 Start: 39979, Stop: 39419, Start Num: 36

Candidate Starts for Bishoperium_46:

(Start: 17 @40063 has 57 MA's), (Start: 19 @40057 has 3 MA's), (Start: 21 @40054 has 1 MA's),
(Start: 36 @39979 has 204 MA's), (47, 39910), (48, 39907), (50, 39904), (65, 39850), (108, 39637),
(139, 39430),

Gene: BlackStallion_48 Start: 40419, Stop: 39859, Start Num: 36

Candidate Starts for BlackStallion_48:

(Start: 36 @40419 has 204 MA's), (47, 40350), (48, 40347), (50, 40344), (65, 40290), (108, 40077),

Gene: Blackbrain_96 Start: 49803, Stop: 50435, Start Num: 29

Candidate Starts for Blackbrain_96:

(Start: 29 @49803 has 172 MA's), (98, 50142), (110, 50220), (129, 50328), (141, 50430),

Gene: Blackdragon_97 Start: 50933, Stop: 51565, Start Num: 29

Candidate Starts for Blackdragon_97:

(Start: 29 @50933 has 172 MA's), (98, 51272), (110, 51350), (129, 51458), (141, 51560),

Gene: Blubba_90 Start: 49899, Stop: 50531, Start Num: 29

Candidate Starts for Blubba_90:

(Start: 29 @49899 has 172 MA's), (98, 50238), (110, 50316), (129, 50424), (141, 50526),

Gene: BlueHusk_47 Start: 39784, Stop: 39224, Start Num: 36

Candidate Starts for BlueHusk_47:

(Start: 29 @39826 has 172 MA's), (Start: 36 @39784 has 204 MA's), (47, 39715), (48, 39712), (50,
39709), (65, 39655), (108, 39442), (139, 39235),

Gene: Bluephacebaby_46 Start: 39982, Stop: 39422, Start Num: 36

Candidate Starts for Bluephacebaby_46:

(Start: 17 @40066 has 57 MA's), (Start: 19 @40060 has 3 MA's), (Start: 21 @40057 has 1 MA's),
(Start: 36 @39982 has 204 MA's), (47, 39913), (48, 39910), (50, 39907), (90, 39742), (108, 39640),
(139, 39433),

Gene: Boehler_47 Start: 40288, Stop: 39728, Start Num: 36

Candidate Starts for Boehler_47:

(Start: 17 @40372 has 57 MA's), (Start: 19 @40366 has 3 MA's), (Start: 21 @40363 has 1 MA's),
(Start: 36 @40288 has 204 MA's), (47, 40219), (48, 40216), (50, 40213), (65, 40159), (108, 39946),
(139, 39739),

Gene: Bonray_101 Start: 51676, Stop: 52314, Start Num: 29

Candidate Starts for Bonray_101:

(Start: 29 @51676 has 172 MA's), (98, 52021), (110, 52099), (129, 52207), (141, 52309),

Gene: Bread_101 Start: 51337, Stop: 51969, Start Num: 29

Candidate Starts for Bread_101:

(Start: 29 @51337 has 172 MA's), (98, 51676), (110, 51754), (129, 51862), (141, 51964),

Gene: Breeniome_100 Start: 49919, Stop: 50551, Start Num: 29

Candidate Starts for Breeniome_100:

(Start: 8 @49832 has 5 MA's), (Start: 29 @49919 has 172 MA's), (98, 50258), (110, 50336), (129, 50444), (141, 50546),

Gene: Brilliant_47 Start: 39981, Stop: 39427, Start Num: 36

Candidate Starts for Brilliant_47:

(Start: 17 @40065 has 57 MA's), (Start: 19 @40059 has 3 MA's), (Start: 21 @40056 has 1 MA's), (Start: 36 @39981 has 204 MA's), (47, 39918), (48, 39915), (50, 39912), (65, 39858), (108, 39645), (121, 39579), (139, 39438),

Gene: Buckeye_47 Start: 40302, Stop: 39742, Start Num: 36

Candidate Starts for Buckeye_47:

(Start: 17 @40386 has 57 MA's), (Start: 19 @40380 has 3 MA's), (Start: 21 @40377 has 1 MA's), (Start: 36 @40302 has 204 MA's), (47, 40233), (48, 40230), (50, 40227), (65, 40173), (90, 40062), (108, 39960), (139, 39753),

Gene: Burr_46 Start: 39976, Stop: 39416, Start Num: 36

Candidate Starts for Burr_46:

(Start: 17 @40060 has 57 MA's), (Start: 19 @40054 has 3 MA's), (Start: 21 @40051 has 1 MA's), (Start: 36 @39976 has 204 MA's), (47, 39907), (48, 39904), (50, 39901), (65, 39847), (108, 39634), (139, 39427),

Gene: Burrough_101 Start: 51836, Stop: 52468, Start Num: 29

Candidate Starts for Burrough_101:

(Start: 29 @51836 has 172 MA's), (98, 52175), (110, 52253), (129, 52361), (141, 52463),

Gene: Bxz1_99 Start: 53274, Stop: 53906, Start Num: 29

Candidate Starts for Bxz1_99:

(Start: 29 @53274 has 172 MA's), (98, 53613), (110, 53691), (129, 53799), (141, 53901),

Gene: Cactojaque_96 Start: 49910, Stop: 50542, Start Num: 29

Candidate Starts for Cactojaque_96:

(Start: 29 @49910 has 172 MA's), (98, 50249), (110, 50327), (129, 50435), (141, 50537),

Gene: Cafasso_152 Start: 79438, Stop: 78929, Start Num: 49

Candidate Starts for Cafasso_152:

(37, 79519), (45, 79480), (Start: 49 @79438 has 4 MA's), (63, 79396), (68, 79375), (80, 79291), (92, 79246), (105, 79174), (126, 79057), (135, 78973),

Gene: CaiB_42 Start: 35854, Stop: 35279, Start Num: 28

Candidate Starts for CaiB_42:

(Start: 28 @35854 has 8 MA's), (38, 35815), (64, 35704), (73, 35665), (99, 35542), (102, 35530), (104, 35521), (109, 35479), (110, 35476), (111, 35473), (113, 35464),

Gene: Cali_97 Start: 51838, Stop: 52470, Start Num: 29

Candidate Starts for Cali_97:

(Start: 29 @51838 has 172 MA's), (98, 52177), (110, 52255), (129, 52363), (141, 52465),

Gene: CamL_47 Start: 40271, Stop: 39717, Start Num: 36

Candidate Starts for CamL_47:

(Start: 17 @40355 has 57 MA's), (Start: 19 @40349 has 3 MA's), (Start: 21 @40346 has 1 MA's), (Start: 36 @40271 has 204 MA's), (47, 40208), (48, 40205), (50, 40202), (65, 40148), (108, 39935), (121, 39869), (139, 39728),

Gene: CampRoach_48 Start: 40405, Stop: 39845, Start Num: 36

Candidate Starts for CampRoach_48:

(Start: 17 @40489 has 57 MA's), (Start: 19 @40483 has 3 MA's), (Start: 21 @40480 has 1 MA's),
(Start: 36 @40405 has 204 MA's), (47, 40336), (48, 40333), (50, 40330), (65, 40276), (108, 40063),

Gene: Cane17_90 Start: 49972, Stop: 50604, Start Num: 29

Candidate Starts for Cane17_90:

(Start: 29 @49972 has 172 MA's), (98, 50311), (110, 50389), (129, 50497), (141, 50599),

Gene: Cannibal_47 Start: 40254, Stop: 39700, Start Num: 36

Candidate Starts for Cannibal_47:

(Start: 17 @40338 has 57 MA's), (Start: 19 @40332 has 3 MA's), (Start: 21 @40329 has 1 MA's),
(Start: 36 @40254 has 204 MA's), (47, 40191), (48, 40188), (50, 40185), (65, 40131), (108, 39918),
(121, 39852), (139, 39711),

Gene: Capablanca_103 Start: 52088, Stop: 52720, Start Num: 29

Candidate Starts for Capablanca_103:

(4, 51977), (Start: 29 @52088 has 172 MA's), (98, 52427), (110, 52505), (129, 52613), (141, 52715),

Gene: Caravan_96 Start: 51189, Stop: 51827, Start Num: 29

Candidate Starts for Caravan_96:

(Start: 29 @51189 has 172 MA's), (98, 51534), (110, 51612), (129, 51720), (141, 51822),

Gene: Carthage_45 Start: 39189, Stop: 38629, Start Num: 36

Candidate Starts for Carthage_45:

(Start: 17 @39273 has 57 MA's), (Start: 19 @39267 has 3 MA's), (Start: 21 @39264 has 1 MA's), (26,
39246), (Start: 36 @39189 has 204 MA's), (47, 39120), (48, 39117), (50, 39114), (65, 39060), (90,
38949), (108, 38847), (139, 38640),

Gene: Caspiboi_48 Start: 40064, Stop: 39426, Start Num: 17

Candidate Starts for Caspiboi_48:

(Start: 17 @40064 has 57 MA's), (Start: 19 @40058 has 3 MA's), (Start: 21 @40055 has 1 MA's),
(Start: 36 @39980 has 204 MA's), (47, 39917), (48, 39914), (50, 39911), (65, 39857), (108, 39644),
(121, 39578), (139, 39437),

Gene: Catera_98 Start: 50105, Stop: 50743, Start Num: 29

Candidate Starts for Catera_98:

(Start: 29 @50105 has 172 MA's), (98, 50450), (110, 50528), (129, 50636), (141, 50738),

Gene: Chaelin_47 Start: 39977, Stop: 39417, Start Num: 36

Candidate Starts for Chaelin_47:

(Start: 17 @40061 has 57 MA's), (Start: 19 @40055 has 3 MA's), (Start: 21 @40052 has 1 MA's),
(Start: 36 @39977 has 204 MA's), (47, 39908), (48, 39905), (50, 39902), (65, 39848), (108, 39635),
(139, 39428),

Gene: Chah_49 Start: 40516, Stop: 39872, Start Num: 17

Candidate Starts for Chah_49:

(Start: 17 @40516 has 57 MA's), (Start: 19 @40510 has 3 MA's), (Start: 21 @40507 has 1 MA's),
(Start: 36 @40432 has 204 MA's), (47, 40363), (48, 40360), (50, 40357), (65, 40303), (108, 40090),

Gene: Chargie21_98 Start: 50225, Stop: 50857, Start Num: 29

Candidate Starts for Chargie21_98:

(Start: 29 @50225 has 172 MA's), (98, 50564), (110, 50642), (129, 50750), (141, 50852),

Gene: Charles1_47 Start: 40262, Stop: 39702, Start Num: 36

Candidate Starts for Charles1_47:

(Start: 17 @40346 has 57 MA's), (Start: 19 @40340 has 3 MA's), (Start: 21 @40337 has 1 MA's),
(Start: 36 @40262 has 204 MA's), (47, 40193), (48, 40190), (50, 40187), (65, 40133), (90, 40022),
(108, 39920), (139, 39713),

Gene: CharlieB_97 Start: 50240, Stop: 50872, Start Num: 29

Candidate Starts for CharlieB_97:

(Start: 29 @50240 has 172 MA's), (98, 50579), (110, 50657), (129, 50765), (141, 50867),

Gene: CharlieGBrown_46 Start: 39852, Stop: 39292, Start Num: 36

Candidate Starts for CharlieGBrown_46:

(Start: 17 @39936 has 57 MA's), (Start: 19 @39930 has 3 MA's), (Start: 21 @39927 has 1 MA's),
(Start: 36 @39852 has 204 MA's), (47, 39783), (48, 39780), (50, 39777), (65, 39723), (108, 39510),
(139, 39303),

Gene: ChaylaJr_96 Start: 49731, Stop: 50363, Start Num: 29

Candidate Starts for ChaylaJr_96:

(Start: 29 @49731 has 172 MA's), (98, 50070), (110, 50148), (129, 50256), (141, 50358),

Gene: CheetO_47 Start: 40366, Stop: 39722, Start Num: 17

Candidate Starts for CheetO_47:

(Start: 17 @40366 has 57 MA's), (Start: 19 @40360 has 3 MA's), (Start: 21 @40357 has 1 MA's),
(Start: 36 @40282 has 204 MA's), (47, 40213), (48, 40210), (50, 40207), (65, 40153), (108, 39940),
(139, 39733),

Gene: Cher_46 Start: 39999, Stop: 39439, Start Num: 36

Candidate Starts for Cher_46:

(Start: 17 @40083 has 57 MA's), (Start: 19 @40077 has 3 MA's), (Start: 21 @40074 has 1 MA's),
(Start: 36 @39999 has 204 MA's), (47, 39930), (48, 39927), (50, 39924), (90, 39759), (108, 39657),
(121, 39591), (139, 39450),

Gene: ChickenPhender_97 Start: 50034, Stop: 50666, Start Num: 29

Candidate Starts for ChickenPhender_97:

(Start: 29 @50034 has 172 MA's), (98, 50373), (110, 50451), (129, 50559), (141, 50661),

Gene: Childish_46 Start: 40002, Stop: 39442, Start Num: 36

Candidate Starts for Childish_46:

(Start: 17 @40086 has 57 MA's), (Start: 19 @40080 has 3 MA's), (Start: 21 @40077 has 1 MA's),
(Start: 36 @40002 has 204 MA's), (47, 39933), (48, 39930), (50, 39927), (65, 39873), (108, 39660),
(139, 39453),

Gene: Chipette_48 Start: 40492, Stop: 39932, Start Num: 36

Candidate Starts for Chipette_48:

(Start: 17 @40576 has 57 MA's), (Start: 19 @40570 has 3 MA's), (Start: 21 @40567 has 1 MA's),
(Start: 36 @40492 has 204 MA's), (47, 40423), (48, 40420), (50, 40417), (65, 40363), (108, 40150),
(139, 39943),

Gene: Chomp_100 Start: 51626, Stop: 52258, Start Num: 29

Candidate Starts for Chomp_100:

(Start: 8 @51539 has 5 MA's), (Start: 29 @51626 has 172 MA's), (98, 51965), (110, 52043), (129,
52151), (141, 52253),

Gene: Chorkpop_47 Start: 39998, Stop: 39438, Start Num: 36

Candidate Starts for Chorkpop_47:

(Start: 17 @40082 has 57 MA's), (Start: 19 @40076 has 3 MA's), (Start: 21 @40073 has 1 MA's),
(Start: 36 @39998 has 204 MA's), (47, 39929), (48, 39926), (50, 39923), (90, 39758), (108, 39656),
(139, 39449),

Gene: Chunky_47 Start: 40285, Stop: 39725, Start Num: 36

Candidate Starts for Chunky_47:

(Start: 17 @40369 has 57 MA's), (Start: 19 @40363 has 3 MA's), (Start: 21 @40360 has 1 MA's),
(Start: 36 @40285 has 204 MA's), (47, 40216), (48, 40213), (50, 40210), (65, 40156), (90, 40045),
(108, 39943), (139, 39736),

Gene: Chute_46 Start: 40410, Stop: 39766, Start Num: 17

Candidate Starts for Chute_46:

(Start: 17 @40410 has 57 MA's), (Start: 19 @40404 has 3 MA's), (Start: 21 @40401 has 1 MA's),
(Start: 36 @40326 has 204 MA's), (47, 40257), (48, 40254), (50, 40251), (65, 40197), (108, 39984),
(139, 39777),

Gene: CindyLou_102 Start: 51667, Stop: 52299, Start Num: 29

Candidate Starts for CindyLou_102:

(Start: 8 @51580 has 5 MA's), (Start: 29 @51667 has 172 MA's), (98, 52006), (110, 52084), (129,
52192), (141, 52294),

Gene: CloverMinnie_42 Start: 35794, Stop: 35219, Start Num: 28

Candidate Starts for CloverMinnie_42:

(Start: 28 @35794 has 8 MA's), (38, 35755), (64, 35644), (73, 35605), (99, 35482), (102, 35470), (104,
35461), (109, 35419), (110, 35416), (111, 35413),

Gene: Cobra_47 Start: 40283, Stop: 39723, Start Num: 36

Candidate Starts for Cobra_47:

(Start: 17 @40367 has 57 MA's), (Start: 19 @40361 has 3 MA's), (Start: 21 @40358 has 1 MA's),
(Start: 36 @40283 has 204 MA's), (47, 40214), (48, 40211), (50, 40208), (90, 40043), (108, 39941),
(139, 39734),

Gene: Colbert_47 Start: 40422, Stop: 39778, Start Num: 17

Candidate Starts for Colbert_47:

(Start: 17 @40422 has 57 MA's), (Start: 19 @40416 has 3 MA's), (Start: 21 @40413 has 1 MA's),
(Start: 36 @40338 has 204 MA's), (47, 40269), (48, 40266), (50, 40263), (65, 40209), (108, 39996),
(139, 39789),

Gene: Coldpizza_43 Start: 38676, Stop: 38062, Start Num: 28

Candidate Starts for Coldpizza_43:

(Start: 28 @38676 has 8 MA's), (67, 38496), (72, 38463), (134, 38121),

Gene: Coletti_46 Start: 40410, Stop: 39766, Start Num: 17

Candidate Starts for Coletti_46:

(Start: 17 @40410 has 57 MA's), (Start: 19 @40404 has 3 MA's), (Start: 21 @40401 has 1 MA's),
(Start: 36 @40326 has 204 MA's), (47, 40257), (48, 40254), (50, 40251), (65, 40197), (108, 39984),
(139, 39777),

Gene: Colt_91 Start: 50568, Stop: 51200, Start Num: 29

Candidate Starts for Colt_91:

(Start: 29 @50568 has 172 MA's), (98, 50907), (110, 50985), (129, 51093), (141, 51195),

Gene: Comrade_252 Start: 123254, Stop: 123727, Start Num: 58

Candidate Starts for Comrade_252:

(53, 123236), (Start: 58 @123254 has 5 MA's), (85, 123380), (86, 123383), (95, 123416), (106, 123491), (110, 123527), (111, 123530), (122, 123584), (126, 123602), (134, 123668), (136, 123707),

Gene: Concombres_108 Start: 54002, Stop: 54640, Start Num: 29

Candidate Starts for Concombres_108:

(Start: 17 @53966 has 57 MA's), (Start: 29 @54002 has 172 MA's), (98, 54347), (110, 54425), (129, 54533), (141, 54635),

Gene: Cornbread_47 Start: 39999, Stop: 39439, Start Num: 36

Candidate Starts for Cornbread_47:

(Start: 17 @40083 has 57 MA's), (Start: 19 @40077 has 3 MA's), (Start: 21 @40074 has 1 MA's), (Start: 36 @39999 has 204 MA's), (47, 39930), (48, 39927), (50, 39924), (90, 39759), (108, 39657), (139, 39450),

Gene: Cornobble_46 Start: 39840, Stop: 39280, Start Num: 36

Candidate Starts for Cornobble_46:

(Start: 17 @39924 has 57 MA's), (Start: 19 @39918 has 3 MA's), (Start: 21 @39915 has 1 MA's), (Start: 36 @39840 has 204 MA's), (47, 39771), (48, 39768), (50, 39765), (65, 39711), (108, 39498), (139, 39291),

Gene: Cosmolli16_46 Start: 39990, Stop: 39430, Start Num: 36

Candidate Starts for Cosmolli16_46:

(Start: 17 @40074 has 57 MA's), (Start: 19 @40068 has 3 MA's), (Start: 21 @40065 has 1 MA's), (Start: 36 @39990 has 204 MA's), (47, 39921), (48, 39918), (50, 39915), (90, 39750), (108, 39648), (139, 39441),

Gene: Craff_48 Start: 40418, Stop: 39858, Start Num: 36

Candidate Starts for Craff_48:

(Start: 17 @40502 has 57 MA's), (Start: 19 @40496 has 3 MA's), (Start: 21 @40493 has 1 MA's), (Start: 36 @40418 has 204 MA's), (47, 40349), (48, 40346), (50, 40343), (65, 40289), (108, 40076),

Gene: Crownjwl_47 Start: 40059, Stop: 39499, Start Num: 36

Candidate Starts for Crownjwl_47:

(Start: 17 @40143 has 57 MA's), (Start: 19 @40137 has 3 MA's), (Start: 21 @40134 has 1 MA's), (Start: 36 @40059 has 204 MA's), (47, 39990), (48, 39987), (50, 39984), (65, 39930), (108, 39717), (139, 39510),

Gene: DTDevon_102 Start: 52106, Stop: 52744, Start Num: 29

Candidate Starts for DTDevon_102:

(Start: 29 @52106 has 172 MA's), (98, 52451), (110, 52529), (129, 52637), (141, 52739),

Gene: DaddyDaniels_47 Start: 39971, Stop: 39411, Start Num: 36

Candidate Starts for DaddyDaniels_47:

(Start: 17 @40055 has 57 MA's), (Start: 19 @40049 has 3 MA's), (Start: 21 @40046 has 1 MA's), (Start: 36 @39971 has 204 MA's), (47, 39902), (48, 39899), (50, 39896), (65, 39842), (108, 39629), (139, 39422),

Gene: Daffodil_106 Start: 51803, Stop: 52441, Start Num: 29

Candidate Starts for Daffodil_106:

(Start: 29 @51803 has 172 MA's), (98, 52148), (110, 52226), (129, 52334), (141, 52436),

Gene: Daffy_47 Start: 39996, Stop: 39442, Start Num: 36

Candidate Starts for Daffy_47:

(Start: 17 @40080 has 57 MA's), (Start: 19 @40074 has 3 MA's), (Start: 21 @40071 has 1 MA's),
(Start: 36 @39996 has 204 MA's), (47, 39933), (48, 39930), (50, 39927), (65, 39873), (108, 39660),
(121, 39594), (139, 39453),

Gene: Daka_48 Start: 40275, Stop: 39715, Start Num: 36

Candidate Starts for Daka_48:

(Start: 17 @40359 has 57 MA's), (Start: 19 @40353 has 3 MA's), (Start: 21 @40350 has 1 MA's),
(Start: 36 @40275 has 204 MA's), (47, 40206), (48, 40203), (50, 40200), (65, 40146), (108, 39933),
(139, 39726),

Gene: DalanDe_65 Start: 59026, Stop: 59634, Start Num: 35

Candidate Starts for DalanDe_65:

(22, 58969), (Start: 35 @59026 has 1 MA's), (70, 59206), (75, 59233), (77, 59251), (85, 59287), (88,
59299), (91, 59308), (105, 59386), (132, 59554),

Gene: Dandelion_108 Start: 54240, Stop: 54878, Start Num: 29

Candidate Starts for Dandelion_108:

(Start: 29 @54240 has 172 MA's), (98, 54585), (110, 54663), (129, 54771), (141, 54873),

Gene: Darko_101 Start: 51745, Stop: 52377, Start Num: 29

Candidate Starts for Darko_101:

(Start: 29 @51745 has 172 MA's), (98, 52084), (110, 52162), (129, 52270), (141, 52372),

Gene: Dati_47 Start: 39999, Stop: 39439, Start Num: 36

Candidate Starts for Dati_47:

(Start: 17 @40083 has 57 MA's), (Start: 19 @40077 has 3 MA's), (Start: 21 @40074 has 1 MA's),
(Start: 36 @39999 has 204 MA's), (47, 39930), (48, 39927), (50, 39924), (65, 39870), (90, 39759),
(108, 39657), (139, 39450),

Gene: DeejaClivia_90 Start: 48422, Stop: 49054, Start Num: 29

Candidate Starts for DeejaClivia_90:

(Start: 29 @48422 has 172 MA's), (98, 48761), (110, 48839), (129, 48947), (141, 49049),

Gene: DelRivs_46 Start: 40003, Stop: 39443, Start Num: 36

Candidate Starts for DelRivs_46:

(Start: 17 @40087 has 57 MA's), (Start: 19 @40081 has 3 MA's), (Start: 21 @40078 has 1 MA's),
(Start: 36 @40003 has 204 MA's), (47, 39934), (48, 39931), (50, 39928), (90, 39763), (108, 39661),
(139, 39454),

Gene: Delilah_101 Start: 51957, Stop: 52595, Start Num: 29

Candidate Starts for Delilah_101:

(Start: 29 @51957 has 172 MA's), (98, 52302), (110, 52380), (129, 52488), (141, 52590),

Gene: Delylah_104 Start: 51502, Stop: 52134, Start Num: 29

Candidate Starts for Delylah_104:

(4, 51391), (Start: 29 @51502 has 172 MA's), (98, 51841), (110, 51919), (129, 52027), (141, 52129),

Gene: Demodog_108 Start: 54002, Stop: 54640, Start Num: 29

Candidate Starts for Demodog_108:

(Start: 17 @53966 has 57 MA's), (Start: 29 @54002 has 172 MA's), (98, 54347), (110, 54425), (129, 54533), (141, 54635),

Gene: Derek_101 Start: 51428, Stop: 52060, Start Num: 29

Candidate Starts for Derek_101:

(Start: 8 @51341 has 5 MA's), (Start: 29 @51428 has 172 MA's), (98, 51767), (110, 51845), (129, 51953), (141, 52055),

Gene: Derpp_46 Start: 39841, Stop: 39281, Start Num: 36

Candidate Starts for Derpp_46:

(Start: 17 @39925 has 57 MA's), (Start: 19 @39919 has 3 MA's), (Start: 21 @39916 has 1 MA's), (Start: 36 @39841 has 204 MA's), (47, 39772), (48, 39769), (50, 39766), (90, 39601), (108, 39499), (139, 39292),

Gene: Dice_46 Start: 39967, Stop: 39413, Start Num: 36

Candidate Starts for Dice_46:

(Start: 17 @40051 has 57 MA's), (Start: 19 @40045 has 3 MA's), (Start: 21 @40042 has 1 MA's), (Start: 36 @39967 has 204 MA's), (47, 39904), (48, 39901), (50, 39898), (65, 39844), (108, 39631), (121, 39565), (139, 39424),

Gene: Dietrick_93 Start: 49504, Stop: 50136, Start Num: 29

Candidate Starts for Dietrick_93:

(Start: 29 @49504 has 172 MA's), (98, 49843), (110, 49921), (129, 50029), (141, 50131),

Gene: Dingo_47 Start: 40265, Stop: 39705, Start Num: 36

Candidate Starts for Dingo_47:

(Start: 29 @40307 has 172 MA's), (Start: 36 @40265 has 204 MA's), (47, 40196), (48, 40193), (50, 40190), (65, 40136), (108, 39923), (139, 39716),

Gene: Dione_46 Start: 39975, Stop: 39421, Start Num: 36

Candidate Starts for Dione_46:

(Start: 17 @40059 has 57 MA's), (Start: 19 @40053 has 3 MA's), (Start: 21 @40050 has 1 MA's), (Start: 36 @39975 has 204 MA's), (47, 39912), (48, 39909), (50, 39906), (65, 39852), (108, 39639), (121, 39573), (139, 39432),

Gene: DirtJuice_47 Start: 40265, Stop: 39705, Start Num: 36

Candidate Starts for DirtJuice_47:

(Start: 17 @40349 has 57 MA's), (Start: 19 @40343 has 3 MA's), (Start: 21 @40340 has 1 MA's), (Start: 36 @40265 has 204 MA's), (47, 40196), (48, 40193), (50, 40190), (65, 40136), (90, 40025), (108, 39923), (139, 39716),

Gene: DirtMonster_95 Start: 50996, Stop: 51628, Start Num: 29

Candidate Starts for DirtMonster_95:

(Start: 29 @50996 has 172 MA's), (98, 51335), (110, 51413), (129, 51521), (141, 51623),

Gene: Doddsville_47 Start: 39995, Stop: 39435, Start Num: 36

Candidate Starts for Doddsville_47:

(Start: 17 @40079 has 57 MA's), (Start: 19 @40073 has 3 MA's), (Start: 21 @40070 has 1 MA's), (Start: 36 @39995 has 204 MA's), (47, 39926), (48, 39923), (50, 39920), (65, 39866), (108, 39653), (139, 39446),

Gene: DoesntMatter_46 Start: 40352, Stop: 39708, Start Num: 17

Candidate Starts for DoesntMatter_46:

(Start: 17 @40352 has 57 MA's), (Start: 19 @40346 has 3 MA's), (Start: 21 @40343 has 1 MA's),
(Start: 36 @40268 has 204 MA's), (47, 40199), (48, 40196), (50, 40193), (65, 40139), (90, 40028),
(108, 39926), (139, 39719),

Gene: Domi_95 Start: 50853, Stop: 51485, Start Num: 29

Candidate Starts for Domi_95:

(Start: 29 @50853 has 172 MA's), (98, 51192), (110, 51270), (129, 51378), (141, 51480),

Gene: DonSanchon_46 Start: 39978, Stop: 39418, Start Num: 36

Candidate Starts for DonSanchon_46:

(Start: 17 @40062 has 57 MA's), (Start: 19 @40056 has 3 MA's), (Start: 21 @40053 has 1 MA's),
(Start: 36 @39978 has 204 MA's), (47, 39909), (48, 39906), (50, 39903), (90, 39738), (108, 39636),
(139, 39429),

Gene: DrPhinkDaddy_100 Start: 52023, Stop: 52661, Start Num: 29

Candidate Starts for DrPhinkDaddy_100:

(Start: 29 @52023 has 172 MA's), (98, 52368), (110, 52446), (129, 52554), (141, 52656),

Gene: Drazdys_100 Start: 50726, Stop: 51358, Start Num: 29

Candidate Starts for Drazdys_100:

(Start: 8 @50639 has 5 MA's), (Start: 29 @50726 has 172 MA's), (98, 51065), (110, 51143), (129,
51251), (141, 51353),

Gene: DuchessDung_46 Start: 39267, Stop: 38707, Start Num: 36

Candidate Starts for DuchessDung_46:

(Start: 17 @39351 has 57 MA's), (Start: 19 @39345 has 3 MA's), (Start: 21 @39342 has 1 MA's),
(Start: 36 @39267 has 204 MA's), (47, 39198), (48, 39195), (50, 39192), (108, 38925),

Gene: Duggie_46 Start: 39997, Stop: 39437, Start Num: 36

Candidate Starts for Duggie_46:

(Start: 17 @40081 has 57 MA's), (Start: 19 @40075 has 3 MA's), (Start: 21 @40072 has 1 MA's),
(Start: 36 @39997 has 204 MA's), (47, 39928), (48, 39925), (50, 39922), (65, 39868), (108, 39655),
(139, 39448),

Gene: Durga_48 Start: 40433, Stop: 39873, Start Num: 36

Candidate Starts for Durga_48:

(Start: 17 @40517 has 57 MA's), (Start: 19 @40511 has 3 MA's), (Start: 21 @40508 has 1 MA's),
(Start: 36 @40433 has 204 MA's), (47, 40364), (48, 40361), (50, 40358), (65, 40304), (108, 40091),

Gene: ET08_90 Start: 50495, Stop: 51127, Start Num: 29

Candidate Starts for ET08_90:

(Start: 29 @50495 has 172 MA's), (98, 50834), (110, 50912), (129, 51020), (141, 51122),

Gene: EasyJones_104 Start: 50888, Stop: 51520, Start Num: 29

Candidate Starts for EasyJones_104:

(Start: 29 @50888 has 172 MA's), (98, 51227), (110, 51305), (129, 51413), (141, 51515),

Gene: EggyFarm_109 Start: 53767, Stop: 54399, Start Num: 29

Candidate Starts for EggyFarm_109:

(Start: 29 @53767 has 172 MA's), (98, 54106), (110, 54184), (129, 54292), (141, 54394),

Gene: ElvisPhasley_49 Start: 40455, Stop: 39895, Start Num: 36

Candidate Starts for ElvisPhasley_49:

(Start: 17 @40539 has 57 MA's), (Start: 19 @40533 has 3 MA's), (Start: 21 @40530 has 1 MA's),
(Start: 36 @40455 has 204 MA's), (47, 40386), (48, 40383), (50, 40380), (65, 40326), (108, 40113),

Gene: EmToTheThree_104 Start: 53020, Stop: 53658, Start Num: 29

Candidate Starts for EmToTheThree_104:

(Start: 29 @53020 has 172 MA's), (98, 53365), (110, 53443), (129, 53551), (141, 53653),

Gene: Emiris_48 Start: 40401, Stop: 39841, Start Num: 36

Candidate Starts for Emiris_48:

(Start: 17 @40485 has 57 MA's), (Start: 19 @40479 has 3 MA's), (Start: 21 @40476 has 1 MA's),
(Start: 36 @40401 has 204 MA's), (47, 40332), (48, 40329), (50, 40326), (65, 40272), (108, 40059),

Gene: EmmaElysia_101 Start: 50554, Stop: 51186, Start Num: 29

Candidate Starts for EmmaElysia_101:

(Start: 29 @50554 has 172 MA's), (98, 50893), (110, 50971), (129, 51079), (141, 51181),

Gene: EmpTee_47 Start: 40281, Stop: 39721, Start Num: 36

Candidate Starts for EmpTee_47:

(Start: 17 @40365 has 57 MA's), (Start: 19 @40359 has 3 MA's), (Start: 21 @40356 has 1 MA's),
(Start: 36 @40281 has 204 MA's), (47, 40212), (48, 40209), (50, 40206), (65, 40152), (108, 39939),
(139, 39732),

Gene: Erdmann_102 Start: 51804, Stop: 52442, Start Num: 29

Candidate Starts for Erdmann_102:

(Start: 29 @51804 has 172 MA's), (98, 52149), (110, 52227), (129, 52335), (141, 52437),

Gene: Eremos_47 Start: 40274, Stop: 39714, Start Num: 36

Candidate Starts for Eremos_47:

(Start: 17 @40358 has 57 MA's), (Start: 19 @40352 has 3 MA's), (Start: 21 @40349 has 1 MA's),
(Start: 36 @40274 has 204 MA's), (47, 40205), (48, 40202), (50, 40199), (65, 40145), (108, 39932),
(139, 39725),

Gene: ErnieJ_97 Start: 50014, Stop: 50652, Start Num: 29

Candidate Starts for ErnieJ_97:

(Start: 29 @50014 has 172 MA's), (98, 50359), (110, 50437), (129, 50545), (141, 50647),

Gene: Essence_98 Start: 50892, Stop: 51524, Start Num: 29

Candidate Starts for Essence_98:

(Start: 8 @50805 has 5 MA's), (Start: 29 @50892 has 172 MA's), (98, 51231), (110, 51309), (129,
51417), (141, 51519),

Gene: Etaye_47 Start: 40268, Stop: 39708, Start Num: 36

Candidate Starts for Etaye_47:

(Start: 17 @40352 has 57 MA's), (Start: 19 @40346 has 3 MA's), (Start: 21 @40343 has 1 MA's),
(Start: 36 @40268 has 204 MA's), (47, 40199), (48, 40196), (50, 40193), (65, 40139), (90, 40028),
(108, 39926), (139, 39719),

Gene: Eugenia_47 Start: 40278, Stop: 39724, Start Num: 36

Candidate Starts for Eugenia_47:

(Start: 17 @40362 has 57 MA's), (Start: 19 @40356 has 3 MA's), (Start: 21 @40353 has 1 MA's),
(Start: 36 @40278 has 204 MA's), (47, 40215), (48, 40212), (50, 40209), (65, 40155), (108, 39942),
(121, 39876), (139, 39735),

Gene: Evaa_40 Start: 34989, Stop: 34357, Start Num: 28
Candidate Starts for Evaa_40:
(14, 35028), (15, 35025), (Start: 28 @34989 has 8 MA's), (44, 34905), (60, 34824), (69, 34788), (76, 34737), (132, 34434),

Gene: Ewok_102 Start: 51197, Stop: 51829, Start Num: 29
Candidate Starts for Ewok_102:
(Start: 29 @51197 has 172 MA's), (98, 51536), (110, 51614), (129, 51722), (141, 51824),

Gene: Fang_48 Start: 40510, Stop: 39866, Start Num: 17
Candidate Starts for Fang_48:
(Start: 17 @40510 has 57 MA's), (Start: 19 @40504 has 3 MA's), (Start: 21 @40501 has 1 MA's),
(Start: 36 @40426 has 204 MA's), (47, 40357), (48, 40354), (50, 40351), (65, 40297), (108, 40084),

Gene: Flabslab_95 Start: 48889, Stop: 49521, Start Num: 29
Candidate Starts for Flabslab_95:
(Start: 8 @48802 has 5 MA's), (Start: 29 @48889 has 172 MA's), (98, 49228), (110, 49306), (129, 49414), (141, 49516),

Gene: Fludd_102 Start: 50660, Stop: 51292, Start Num: 29
Candidate Starts for Fludd_102:
(Start: 29 @50660 has 172 MA's), (98, 50999), (110, 51077), (129, 51185), (141, 51287),

Gene: FluffyNinja_48 Start: 40503, Stop: 39859, Start Num: 17
Candidate Starts for FluffyNinja_48:
(Start: 17 @40503 has 57 MA's), (Start: 19 @40497 has 3 MA's), (Start: 21 @40494 has 1 MA's),
(Start: 36 @40419 has 204 MA's), (47, 40350), (48, 40347), (50, 40344), (65, 40290), (108, 40077),

Gene: Fongie_99 Start: 51410, Stop: 52042, Start Num: 29
Candidate Starts for Fongie_99:
(Start: 29 @51410 has 172 MA's), (98, 51749), (110, 51827), (129, 51935), (141, 52037),

Gene: FoxtrotP1_101 Start: 52974, Stop: 53612, Start Num: 29
Candidate Starts for FoxtrotP1_101:
(Start: 29 @52974 has 172 MA's), (98, 53319), (110, 53397), (129, 53505), (141, 53607),

Gene: Fozzie_46 Start: 40303, Stop: 39743, Start Num: 36
Candidate Starts for Fozzie_46:
(Start: 17 @40387 has 57 MA's), (Start: 19 @40381 has 3 MA's), (Start: 21 @40378 has 1 MA's),
(Start: 36 @40303 has 204 MA's), (47, 40234), (48, 40231), (50, 40228), (65, 40174), (108, 39961),
(139, 39754),

Gene: Frankicide_47 Start: 40293, Stop: 39733, Start Num: 36
Candidate Starts for Frankicide_47:
(Start: 17 @40377 has 57 MA's), (Start: 19 @40371 has 3 MA's), (Start: 21 @40368 has 1 MA's),
(Start: 36 @40293 has 204 MA's), (47, 40224), (48, 40221), (50, 40218), (65, 40164), (90, 40053),
(108, 39951), (139, 39744),

Gene: FrayBell_106 Start: 52378, Stop: 53010, Start Num: 29
Candidate Starts for FrayBell_106:
(Start: 8 @52291 has 5 MA's), (Start: 29 @52378 has 172 MA's), (98, 52717), (110, 52795), (129, 52903), (141, 53005),

Gene: Freya_46 Start: 39966, Stop: 39412, Start Num: 36

Candidate Starts for Freya_46:

(Start: 17 @40050 has 57 MA's), (Start: 19 @40044 has 3 MA's), (Start: 21 @40041 has 1 MA's),
(Start: 36 @39966 has 204 MA's), (47, 39903), (48, 39900), (50, 39897), (65, 39843), (108, 39630),
(121, 39564), (139, 39423),

Gene: FriarPreacher_46 Start: 40305, Stop: 39745, Start Num: 36

Candidate Starts for FriarPreacher_46:

(Start: 17 @40389 has 57 MA's), (Start: 19 @40383 has 3 MA's), (Start: 21 @40380 has 1 MA's),
(Start: 36 @40305 has 204 MA's), (47, 40236), (48, 40233), (50, 40230), (90, 40065), (108, 39963),
(139, 39756),

Gene: Fringe_48 Start: 40402, Stop: 39842, Start Num: 36

Candidate Starts for Fringe_48:

(Start: 17 @40486 has 57 MA's), (Start: 19 @40480 has 3 MA's), (Start: 21 @40477 has 1 MA's),
(Start: 36 @40402 has 204 MA's), (47, 40333), (48, 40330), (50, 40327), (65, 40273), (108, 40060),

Gene: Frizzle_18 Start: 17372, Stop: 16779, Start Num: 33

Candidate Starts for Frizzle_18:

(Start: 33 @17372 has 3 MA's), (42, 17324), (56, 17252), (104, 17027), (120, 16928), (123, 16916),

Gene: FudgeTart_101 Start: 51094, Stop: 51726, Start Num: 29

Candidate Starts for FudgeTart_101:

(Start: 29 @51094 has 172 MA's), (98, 51433), (110, 51511), (129, 51619), (141, 51721),

Gene: FugateOSU_46 Start: 39980, Stop: 39420, Start Num: 36

Candidate Starts for FugateOSU_46:

(Start: 17 @40064 has 57 MA's), (Start: 19 @40058 has 3 MA's), (Start: 21 @40055 has 1 MA's),
(Start: 36 @39980 has 204 MA's), (47, 39911), (48, 39908), (50, 39905), (65, 39851), (78, 39770),
(108, 39638), (139, 39431),

Gene: Gabriel_102 Start: 50298, Stop: 50930, Start Num: 29

Candidate Starts for Gabriel_102:

(Start: 8 @50211 has 5 MA's), (Start: 29 @50298 has 172 MA's), (98, 50637), (110, 50715), (129,
50823), (141, 50925),

Gene: Gamgam_101 Start: 50251, Stop: 50970, Start Num: 8

Candidate Starts for Gamgam_101:

(Start: 8 @50251 has 5 MA's), (Start: 29 @50338 has 172 MA's), (98, 50677), (110, 50755), (129,
50863), (141, 50965),

Gene: Gareth_46 Start: 39974, Stop: 39420, Start Num: 36

Candidate Starts for Gareth_46:

(Start: 17 @40058 has 57 MA's), (Start: 19 @40052 has 3 MA's), (Start: 21 @40049 has 1 MA's),
(Start: 36 @39974 has 204 MA's), (47, 39911), (48, 39908), (50, 39905), (65, 39851), (108, 39638),
(121, 39572), (139, 39431),

Gene: GeneCoco_47 Start: 40289, Stop: 39729, Start Num: 36

Candidate Starts for GeneCoco_47:

(Start: 17 @40373 has 57 MA's), (Start: 19 @40367 has 3 MA's), (Start: 21 @40364 has 1 MA's),
(Start: 36 @40289 has 204 MA's), (47, 40220), (48, 40217), (50, 40214), (90, 40049), (108, 39947),
(139, 39740),

Gene: Ghobes_19 Start: 17373, Stop: 16780, Start Num: 33
Candidate Starts for Ghobes_19:
(Start: 33 @17373 has 3 MA's), (42, 17325), (56, 17253), (104, 17028), (120, 16929), (123, 16917),

Gene: Ghost_100 Start: 50338, Stop: 50970, Start Num: 29
Candidate Starts for Ghost_100:
(Start: 8 @50251 has 5 MA's), (Start: 29 @50338 has 172 MA's), (98, 50677), (110, 50755), (129, 50863), (141, 50965),

Gene: Giraffe_47 Start: 40067, Stop: 39423, Start Num: 17
Candidate Starts for Giraffe_47:
(Start: 17 @40067 has 57 MA's), (Start: 19 @40061 has 3 MA's), (Start: 21 @40058 has 1 MA's),
(Start: 36 @39983 has 204 MA's), (47, 39914), (48, 39911), (50, 39908), (90, 39743), (108, 39641),
(139, 39434),

Gene: Gizmo_105 Start: 52954, Stop: 53592, Start Num: 29
Candidate Starts for Gizmo_105:
(Start: 29 @52954 has 172 MA's), (98, 53299), (110, 53377), (129, 53485), (141, 53587),

Gene: GlutenPhree_100 Start: 50338, Stop: 50970, Start Num: 29
Candidate Starts for GlutenPhree_100:
(Start: 8 @50251 has 5 MA's), (Start: 29 @50338 has 172 MA's), (98, 50677), (110, 50755), (129, 50863), (141, 50965),

Gene: Gophee_47 Start: 40272, Stop: 39712, Start Num: 36
Candidate Starts for Gophee_47:
(Start: 17 @40356 has 57 MA's), (Start: 19 @40350 has 3 MA's), (Start: 21 @40347 has 1 MA's),
(Start: 36 @40272 has 204 MA's), (47, 40203), (48, 40200), (50, 40197), (65, 40143), (108, 39930),
(139, 39723),

Gene: Grand2040_46 Start: 39992, Stop: 39438, Start Num: 36
Candidate Starts for Grand2040_46:
(Start: 17 @40076 has 57 MA's), (Start: 19 @40070 has 3 MA's), (Start: 21 @40067 has 1 MA's),
(Start: 36 @39992 has 204 MA's), (47, 39929), (48, 39926), (50, 39923), (65, 39869), (108, 39656),
(121, 39590), (139, 39449),

Gene: Grasshills_108 Start: 53767, Stop: 54399, Start Num: 29
Candidate Starts for Grasshills_108:
(Start: 29 @53767 has 172 MA's), (98, 54106), (110, 54184), (129, 54292), (141, 54394),

Gene: Greely_236 Start: 133749, Stop: 134378, Start Num: 31
Candidate Starts for Greely_236:
(Start: 31 @133749 has 1 MA's), (40, 133797), (80, 134001), (93, 134046), (98, 134085), (103, 134106), (104, 134112), (107, 134142), (109, 134160), (137, 134355), (138, 134358),

Gene: Grungle_89 Start: 48153, Stop: 48785, Start Num: 29
Candidate Starts for Grungle_89:
(Start: 29 @48153 has 172 MA's), (98, 48492), (110, 48570), (129, 48678), (141, 48780),

Gene: Gustav_54 Start: 38579, Stop: 38097, Start Num: 52
Candidate Starts for Gustav_54:
(Start: 52 @38579 has 1 MA's), (61, 38540), (94, 38393), (97, 38372), (110, 38291), (115, 38273),
(124, 38228), (131, 38180),

Gene: Guwapp_100 Start: 50463, Stop: 51095, Start Num: 29

Candidate Starts for Guwapp_100:

(Start: 8 @50376 has 5 MA's), (Start: 29 @50463 has 172 MA's), (98, 50802), (110, 50880), (129, 50988), (141, 51090),

Gene: Gwennie1_47 Start: 40422, Stop: 39784, Start Num: 17

Candidate Starts for Gwennie1_47:

(Start: 17 @40422 has 57 MA's), (Start: 19 @40416 has 3 MA's), (Start: 21 @40413 has 1 MA's), (Start: 36 @40338 has 204 MA's), (47, 40275), (48, 40272), (50, 40269), (65, 40215), (108, 40002), (121, 39936), (139, 39795),

Gene: Gwilliam_47 Start: 40278, Stop: 39718, Start Num: 36

Candidate Starts for Gwilliam_47:

(Start: 17 @40362 has 57 MA's), (Start: 19 @40356 has 3 MA's), (Start: 21 @40353 has 1 MA's), (Start: 36 @40278 has 204 MA's), (47, 40209), (48, 40206), (50, 40203), (65, 40149), (108, 39936), (139, 39729),

Gene: Gyarad_0047 Start: 40364, Stop: 39720, Start Num: 17

Candidate Starts for Gyarad_0047:

(Start: 17 @40364 has 57 MA's), (Start: 19 @40358 has 3 MA's), (Start: 21 @40355 has 1 MA's), (Start: 36 @40280 has 204 MA's), (47, 40211), (48, 40208), (50, 40205), (65, 40151), (90, 40040), (108, 39938), (139, 39731),

Gene: HSavage_47 Start: 40284, Stop: 39724, Start Num: 36

Candidate Starts for HSavage_47:

(Start: 17 @40368 has 57 MA's), (Start: 19 @40362 has 3 MA's), (Start: 21 @40359 has 1 MA's), (Start: 36 @40284 has 204 MA's), (47, 40215), (48, 40212), (50, 40209), (65, 40155), (90, 40044), (108, 39942), (139, 39735),

Gene: Haimas_47 Start: 40278, Stop: 39718, Start Num: 36

Candidate Starts for Haimas_47:

(Start: 17 @40362 has 57 MA's), (Start: 19 @40356 has 3 MA's), (Start: 21 @40353 has 1 MA's), (Start: 36 @40278 has 204 MA's), (47, 40209), (48, 40206), (50, 40203), (65, 40149), (108, 39936), (139, 39729),

Gene: Haleema_46 Start: 39992, Stop: 39438, Start Num: 36

Candidate Starts for Haleema_46:

(Start: 17 @40076 has 57 MA's), (Start: 19 @40070 has 3 MA's), (Start: 21 @40067 has 1 MA's), (Start: 36 @39992 has 204 MA's), (47, 39929), (48, 39926), (50, 39923), (65, 39869), (108, 39656), (121, 39590), (139, 39449),

Gene: Halldule_95 Start: 49179, Stop: 49811, Start Num: 29

Candidate Starts for Halldule_95:

(9, 49101), (Start: 29 @49179 has 172 MA's), (98, 49518), (110, 49596), (129, 49704), (141, 49806),

Gene: Hamish_47 Start: 40270, Stop: 39710, Start Num: 36

Candidate Starts for Hamish_47:

(Start: 17 @40354 has 57 MA's), (Start: 19 @40348 has 3 MA's), (Start: 21 @40345 has 1 MA's), (Start: 36 @40270 has 204 MA's), (47, 40201), (48, 40198), (50, 40195), (65, 40141), (108, 39928), (139, 39721),

Gene: Hartsy_47 Start: 40321, Stop: 39761, Start Num: 36

Candidate Starts for Hartsy_47:

(Start: 17 @40405 has 57 MA's), (Start: 19 @40399 has 3 MA's), (Start: 21 @40396 has 1 MA's),
(Start: 36 @40321 has 204 MA's), (47, 40252), (48, 40249), (50, 40246), (65, 40192), (108, 39979),
(139, 39772),

Gene: Harvey_47 Start: 40380, Stop: 39736, Start Num: 17

Candidate Starts for Harvey_47:

(Start: 17 @40380 has 57 MA's), (Start: 19 @40374 has 3 MA's), (Start: 21 @40371 has 1 MA's),
(Start: 36 @40296 has 204 MA's), (47, 40227), (48, 40224), (50, 40221), (90, 40056), (108, 39954),
(139, 39747),

Gene: Held_47 Start: 39982, Stop: 39422, Start Num: 36

Candidate Starts for Held_47:

(Start: 17 @40066 has 57 MA's), (Start: 19 @40060 has 3 MA's), (Start: 21 @40057 has 1 MA's),
(Start: 36 @39982 has 204 MA's), (47, 39913), (48, 39910), (50, 39907), (90, 39742), (108, 39640),
(139, 39433),

Gene: HenryJackson_46 Start: 39992, Stop: 39438, Start Num: 36

Candidate Starts for HenryJackson_46:

(Start: 17 @40076 has 57 MA's), (Start: 19 @40070 has 3 MA's), (Start: 21 @40067 has 1 MA's),
(Start: 36 @39992 has 204 MA's), (47, 39929), (48, 39926), (50, 39923), (65, 39869), (108, 39656),
(121, 39590), (139, 39449),

Gene: Hertubise_47 Start: 40376, Stop: 39732, Start Num: 17

Candidate Starts for Hertubise_47:

(Start: 17 @40376 has 57 MA's), (Start: 19 @40370 has 3 MA's), (Start: 21 @40367 has 1 MA's),
(Start: 36 @40292 has 204 MA's), (47, 40223), (48, 40220), (50, 40217), (90, 40052), (108, 39950),
(139, 39743),

Gene: Hetaeria_47 Start: 40294, Stop: 39734, Start Num: 36

Candidate Starts for Hetaeria_47:

(Start: 17 @40378 has 57 MA's), (Start: 19 @40372 has 3 MA's), (Start: 21 @40369 has 1 MA's),
(Start: 36 @40294 has 204 MA's), (47, 40225), (48, 40222), (50, 40219), (90, 40054), (108, 39952),
(139, 39745),

Gene: HighStump_47 Start: 40119, Stop: 39559, Start Num: 36

Candidate Starts for HighStump_47:

(Start: 17 @40203 has 57 MA's), (Start: 19 @40197 has 3 MA's), (Start: 21 @40194 has 1 MA's),
(Start: 36 @40119 has 204 MA's), (47, 40050), (48, 40047), (50, 40044), (65, 39990), (108, 39777),

Gene: Hocus_46 Start: 39981, Stop: 39427, Start Num: 36

Candidate Starts for Hocus_46:

(Start: 17 @40065 has 57 MA's), (Start: 19 @40059 has 3 MA's), (Start: 21 @40056 has 1 MA's),
(Start: 36 @39981 has 204 MA's), (47, 39918), (48, 39915), (50, 39912), (65, 39858), (108, 39645),
(121, 39579), (139, 39438),

Gene: Horchata_47 Start: 40272, Stop: 39712, Start Num: 36

Candidate Starts for Horchata_47:

(Start: 17 @40356 has 57 MA's), (Start: 19 @40350 has 3 MA's), (Start: 21 @40347 has 1 MA's),
(Start: 36 @40272 has 204 MA's), (47, 40203), (48, 40200), (50, 40197), (65, 40143), (108, 39930),
(139, 39723),

Gene: HyRo_93 Start: 50590, Stop: 51222, Start Num: 29

Candidate Starts for HyRo_93:

(Start: 29 @50590 has 172 MA's), (98, 50929), (110, 51007), (129, 51115), (141, 51217),

Gene: I3_107 Start: 52305, Stop: 52937, Start Num: 29

Candidate Starts for I3_107:

(Start: 29 @52305 has 172 MA's), (98, 52644), (110, 52722), (129, 52830), (141, 52932),

Gene: IkeLoa_95 Start: 50415, Stop: 51053, Start Num: 29

Candidate Starts for IkeLoa_95:

(Start: 29 @50415 has 172 MA's), (98, 50760), (110, 50838), (129, 50946), (141, 51048),

Gene: ImtiyazSitla_47 Start: 40051, Stop: 39407, Start Num: 17

Candidate Starts for ImtiyazSitla_47:

(Start: 17 @40051 has 57 MA's), (Start: 19 @40045 has 3 MA's), (Start: 21 @40042 has 1 MA's),
(Start: 36 @39967 has 204 MA's), (47, 39898), (48, 39895), (50, 39892), (65, 39838), (108, 39625),

Gene: Inchworm_48 Start: 40405, Stop: 39845, Start Num: 36

Candidate Starts for Inchworm_48:

(Start: 17 @40489 has 57 MA's), (Start: 19 @40483 has 3 MA's), (Start: 21 @40480 has 1 MA's),
(Start: 36 @40405 has 204 MA's), (47, 40336), (48, 40333), (50, 40330), (65, 40276), (108, 40063),

Gene: InigoMontoya_102 Start: 50299, Stop: 50931, Start Num: 29

Candidate Starts for InigoMontoya_102:

(Start: 8 @50212 has 5 MA's), (Start: 29 @50299 has 172 MA's), (98, 50638), (110, 50716), (129, 50824), (141, 50926),

Gene: InterFolia_109 Start: 53313, Stop: 53945, Start Num: 29

Candidate Starts for InterFolia_109:

(Start: 8 @53226 has 5 MA's), (Start: 29 @53313 has 172 MA's), (98, 53652), (110, 53730), (129, 53838), (141, 53940),

Gene: Inverness_47 Start: 40365, Stop: 39721, Start Num: 17

Candidate Starts for Inverness_47:

(Start: 17 @40365 has 57 MA's), (Start: 19 @40359 has 3 MA's), (Start: 21 @40356 has 1 MA's),
(Start: 36 @40281 has 204 MA's), (47, 40212), (48, 40209), (50, 40206), (65, 40152), (90, 40041),
(108, 39939), (139, 39732),

Gene: Iota_96 Start: 50775, Stop: 51407, Start Num: 29

Candidate Starts for Iota_96:

(Start: 29 @50775 has 172 MA's), (98, 51114), (110, 51192), (129, 51300), (141, 51402),

Gene: Iridessa_48 Start: 39977, Stop: 39423, Start Num: 36

Candidate Starts for Iridessa_48:

(Start: 17 @40061 has 57 MA's), (Start: 19 @40055 has 3 MA's), (Start: 21 @40052 has 1 MA's),
(Start: 36 @39977 has 204 MA's), (47, 39914), (48, 39911), (50, 39908), (65, 39854), (108, 39641),
(121, 39575), (139, 39434),

Gene: Iridoclysis_47 Start: 40264, Stop: 39704, Start Num: 36

Candidate Starts for Iridoclysis_47:

(Start: 17 @40348 has 57 MA's), (Start: 19 @40342 has 3 MA's), (Start: 21 @40339 has 1 MA's),
(Start: 36 @40264 has 204 MA's), (47, 40195), (48, 40192), (50, 40189), (65, 40135), (108, 39922),
(139, 39715),

Gene: IsaacEli_48 Start: 40507, Stop: 39863, Start Num: 17

Candidate Starts for IsaacEli_48:

(Start: 17 @40507 has 57 MA's), (Start: 19 @40501 has 3 MA's), (Start: 21 @40498 has 1 MA's),
(Start: 36 @40423 has 204 MA's), (47, 40354), (48, 40351), (50, 40348), (65, 40294), (108, 40081),

Gene: Issimir_100 Start: 51778, Stop: 52416, Start Num: 29

Candidate Starts for Issimir_100:

(Start: 29 @51778 has 172 MA's), (98, 52123), (110, 52201), (129, 52309), (141, 52411),

Gene: Izajani_101 Start: 51984, Stop: 52622, Start Num: 29

Candidate Starts for Izajani_101:

(Start: 29 @51984 has 172 MA's), (98, 52329), (110, 52407), (129, 52515), (141, 52617),

Gene: JDog_46 Start: 40001, Stop: 39441, Start Num: 36

Candidate Starts for JDog_46:

(Start: 17 @40085 has 57 MA's), (Start: 19 @40079 has 3 MA's), (Start: 21 @40076 has 1 MA's),
(Start: 36 @40001 has 204 MA's), (47, 39932), (48, 39929), (50, 39926), (65, 39872), (90, 39761),
(108, 39659), (139, 39452),

Gene: JPickles_99 Start: 49482, Stop: 50201, Start Num: 8

Candidate Starts for JPickles_99:

(Start: 8 @49482 has 5 MA's), (Start: 29 @49569 has 172 MA's), (98, 49908), (110, 49986), (129,
50094), (141, 50196),

Gene: JacAttac_48 Start: 40483, Stop: 39845, Start Num: 19

Candidate Starts for JacAttac_48:

(Start: 17 @40489 has 57 MA's), (Start: 19 @40483 has 3 MA's), (Start: 21 @40480 has 1 MA's),
(Start: 36 @40405 has 204 MA's), (47, 40336), (48, 40333), (50, 40330), (65, 40276), (108, 40063),

Gene: JakeO_46 Start: 40000, Stop: 39440, Start Num: 36

Candidate Starts for JakeO_46:

(Start: 17 @40084 has 57 MA's), (Start: 19 @40078 has 3 MA's), (Start: 21 @40075 has 1 MA's),
(Start: 36 @40000 has 204 MA's), (47, 39931), (48, 39928), (50, 39925), (65, 39871), (108, 39658),
(139, 39451),

Gene: JangoPhett_47 Start: 40275, Stop: 39715, Start Num: 36

Candidate Starts for JangoPhett_47:

(Start: 17 @40359 has 57 MA's), (Start: 19 @40353 has 3 MA's), (Start: 21 @40350 has 1 MA's),
(Start: 36 @40275 has 204 MA's), (47, 40206), (48, 40203), (50, 40200), (90, 40035), (108, 39933),
(139, 39726),

Gene: Janiyra_103 Start: 51265, Stop: 51897, Start Num: 29

Candidate Starts for Janiyra_103:

(Start: 29 @51265 has 172 MA's), (98, 51604), (110, 51682), (129, 51790), (141, 51892),

Gene: JayJay_107 Start: 53030, Stop: 53662, Start Num: 29

Candidate Starts for JayJay_107:

(Start: 29 @53030 has 172 MA's), (98, 53369), (110, 53447), (129, 53555), (141, 53657),

Gene: Jaygup_101 Start: 51094, Stop: 51726, Start Num: 29

Candidate Starts for Jaygup_101:

(Start: 8 @51007 has 5 MA's), (Start: 29 @51094 has 172 MA's), (98, 51433), (110, 51511), (129,
51619), (141, 51721),

Gene: Jedediah_104 Start: 51627, Stop: 52259, Start Num: 29

Candidate Starts for Jedediah_104:

(Start: 8 @51540 has 5 MA's), (Start: 29 @51627 has 172 MA's), (98, 51966), (110, 52044), (129, 52152), (141, 52254),

Gene: Jemmno_101 Start: 51074, Stop: 51706, Start Num: 29

Candidate Starts for Jemmno_101:

(Start: 8 @50987 has 5 MA's), (Start: 29 @51074 has 172 MA's), (98, 51413), (110, 51491), (129, 51599), (141, 51701),

Gene: Jesabah_47 Start: 40003, Stop: 39443, Start Num: 36

Candidate Starts for Jesabah_47:

(Start: 17 @40087 has 57 MA's), (Start: 19 @40081 has 3 MA's), (Start: 21 @40078 has 1 MA's), (Start: 36 @40003 has 204 MA's), (47, 39934), (48, 39931), (50, 39928), (90, 39763), (108, 39661), (139, 39454),

Gene: Jessibeth14_100 Start: 51589, Stop: 52227, Start Num: 29

Candidate Starts for Jessibeth14_100:

(Start: 29 @51589 has 172 MA's), (98, 51934), (110, 52012), (129, 52120), (141, 52222),

Gene: Jezreel_99 Start: 51758, Stop: 52390, Start Num: 29

Candidate Starts for Jezreel_99:

(Start: 29 @51758 has 172 MA's), (98, 52097), (110, 52175), (129, 52283), (141, 52385),

Gene: JigglyPuff_109 Start: 53918, Stop: 54556, Start Num: 29

Candidate Starts for JigglyPuff_109:

(Start: 29 @53918 has 172 MA's), (98, 54263), (110, 54341), (129, 54449), (141, 54551),

Gene: Jillium_46 Start: 39994, Stop: 39434, Start Num: 36

Candidate Starts for Jillium_46:

(Start: 17 @40078 has 57 MA's), (Start: 19 @40072 has 3 MA's), (Start: 21 @40069 has 1 MA's), (Start: 36 @39994 has 204 MA's), (47, 39925), (48, 39922), (50, 39919), (90, 39754), (108, 39652), (139, 39445),

Gene: Jiminy_46 Start: 39835, Stop: 39275, Start Num: 36

Candidate Starts for Jiminy_46:

(Start: 17 @39919 has 57 MA's), (Start: 19 @39913 has 3 MA's), (Start: 21 @39910 has 1 MA's), (Start: 36 @39835 has 204 MA's), (47, 39766), (48, 39763), (50, 39760), (65, 39706), (108, 39493), (139, 39286),

Gene: Jiraiya_46 Start: 39988, Stop: 39428, Start Num: 36

Candidate Starts for Jiraiya_46:

(Start: 17 @40072 has 57 MA's), (Start: 19 @40066 has 3 MA's), (Start: 21 @40063 has 1 MA's), (Start: 36 @39988 has 204 MA's), (47, 39919), (48, 39916), (50, 39913), (65, 39859), (108, 39646), (139, 39439),

Gene: JulietS_96 Start: 49032, Stop: 49664, Start Num: 29

Candidate Starts for JulietS_96:

(Start: 29 @49032 has 172 MA's), (98, 49371), (110, 49449), (129, 49557), (141, 49659),

Gene: JustHall_98 Start: 51127, Stop: 51765, Start Num: 29

Candidate Starts for JustHall_98:

(Start: 29 @51127 has 172 MA's), (98, 51472), (110, 51550), (129, 51658), (141, 51760),

Gene: KLucky39_47 Start: 40279, Stop: 39719, Start Num: 36

Candidate Starts for KLucky39_47:

(Start: 17 @40363 has 57 MA's), (Start: 19 @40357 has 3 MA's), (Start: 21 @40354 has 1 MA's),
(Start: 36 @40279 has 204 MA's), (47, 40210), (48, 40207), (50, 40204), (65, 40150), (90, 40039),
(108, 39937), (139, 39730),

Gene: Kahve_46 Start: 39989, Stop: 39435, Start Num: 36

Candidate Starts for Kahve_46:

(Start: 17 @40073 has 57 MA's), (Start: 19 @40067 has 3 MA's), (Start: 21 @40064 has 1 MA's),
(Start: 36 @39989 has 204 MA's), (47, 39926), (48, 39923), (50, 39920), (65, 39866), (108, 39653),
(121, 39587), (139, 39446),

Gene: Kailash_47 Start: 40336, Stop: 39776, Start Num: 36

Candidate Starts for Kailash_47:

(Start: 17 @40420 has 57 MA's), (Start: 19 @40414 has 3 MA's), (Start: 21 @40411 has 1 MA's),
(Start: 36 @40336 has 204 MA's), (48, 40264), (50, 40261), (65, 40207), (90, 40096), (108, 39994),
(139, 39787),

Gene: Kamryn_101 Start: 52411, Stop: 53043, Start Num: 29

Candidate Starts for Kamryn_101:

(4, 52300), (Start: 29 @52411 has 172 MA's), (98, 52750), (110, 52828), (129, 52936), (141, 53038),

Gene: Karp_256 Start: 124709, Stop: 125182, Start Num: 58

Candidate Starts for Karp_256:

(53, 124691), (Start: 58 @124709 has 5 MA's), (85, 124835), (86, 124838), (95, 124871), (106,
124946), (110, 124982), (122, 125039), (126, 125057), (134, 125123), (136, 125162),

Gene: Katniss_48 Start: 40432, Stop: 39872, Start Num: 36

Candidate Starts for Katniss_48:

(Start: 17 @40516 has 57 MA's), (Start: 19 @40510 has 3 MA's), (Start: 21 @40507 has 1 MA's),
(Start: 36 @40432 has 204 MA's), (47, 40363), (48, 40360), (50, 40357), (65, 40303), (108, 40090),

Gene: Kboogie_105 Start: 50769, Stop: 51401, Start Num: 29

Candidate Starts for Kboogie_105:

(Start: 29 @50769 has 172 MA's), (98, 51108), (110, 51186), (129, 51294), (141, 51396),

Gene: Keitherie_47 Start: 40335, Stop: 39775, Start Num: 36

Candidate Starts for Keitherie_47:

(Start: 17 @40419 has 57 MA's), (Start: 19 @40413 has 3 MA's), (Start: 21 @40410 has 1 MA's),
(Start: 36 @40335 has 204 MA's), (47, 40266), (48, 40263), (50, 40260), (65, 40206), (108, 39993),
(139, 39786),

Gene: Khaleesi_100 Start: 51704, Stop: 52342, Start Num: 29

Candidate Starts for Khaleesi_100:

(Start: 29 @51704 has 172 MA's), (98, 52049), (110, 52127), (129, 52235), (141, 52337),

Gene: Khan1_47 Start: 40010, Stop: 39456, Start Num: 36

Candidate Starts for Khan1_47:

(Start: 17 @40094 has 57 MA's), (Start: 19 @40088 has 3 MA's), (Start: 21 @40085 has 1 MA's),
(Start: 36 @40010 has 204 MA's), (47, 39947), (48, 39944), (50, 39941), (65, 39887), (108, 39674),
(121, 39608), (139, 39467),

Gene: Kikipoo_48 Start: 40507, Stop: 39863, Start Num: 17

Candidate Starts for Kikipoo_48:

(Start: 17 @40507 has 57 MA's), (Start: 19 @40501 has 3 MA's), (Start: 21 @40498 has 1 MA's),
(Start: 36 @40423 has 204 MA's), (47, 40354), (48, 40351), (50, 40348), (65, 40294), (108, 40081),

Gene: Kimbrough_47 Start: 39996, Stop: 39436, Start Num: 36

Candidate Starts for Kimbrough_47:

(Start: 17 @40080 has 57 MA's), (Start: 19 @40074 has 3 MA's), (Start: 21 @40071 has 1 MA's),
(Start: 36 @39996 has 204 MA's), (47, 39927), (48, 39924), (50, 39921), (65, 39867), (108, 39654),
(139, 39447),

Gene: KingTut_38 Start: 35659, Stop: 35099, Start Num: 36

Candidate Starts for KingTut_38:

(Start: 17 @35743 has 57 MA's), (Start: 19 @35737 has 3 MA's), (Start: 21 @35734 has 1 MA's),
(Start: 36 @35659 has 204 MA's), (47, 35590), (48, 35587), (50, 35584), (65, 35530), (108, 35317),
(139, 35110),

Gene: KingVeVeVe_47 Start: 40266, Stop: 39706, Start Num: 36

Candidate Starts for KingVeVeVe_47:

(Start: 29 @40308 has 172 MA's), (Start: 36 @40266 has 204 MA's), (47, 40197), (48, 40194), (50,
40191), (65, 40137), (108, 39924), (139, 39717),

Gene: KlimbOn_47 Start: 40357, Stop: 39713, Start Num: 17

Candidate Starts for KlimbOn_47:

(Start: 17 @40357 has 57 MA's), (Start: 19 @40351 has 3 MA's), (Start: 21 @40348 has 1 MA's),
(Start: 36 @40273 has 204 MA's), (47, 40204), (48, 40201), (50, 40198), (65, 40144), (90, 40033),
(108, 39931), (139, 39724),

Gene: Kloppinator_47 Start: 40299, Stop: 39739, Start Num: 36

Candidate Starts for Kloppinator_47:

(13, 40392), (Start: 19 @40377 has 3 MA's), (Start: 21 @40374 has 1 MA's), (Start: 36 @40299 has
204 MA's), (47, 40230), (48, 40227), (50, 40224), (90, 40059), (108, 39957), (139, 39750),

Gene: Koguma_98 Start: 49254, Stop: 49886, Start Num: 29

Candidate Starts for Koguma_98:

(Start: 29 @49254 has 172 MA's), (98, 49593), (110, 49671), (129, 49779), (141, 49881),

Gene: Kwadwo_46 Start: 39971, Stop: 39417, Start Num: 36

Candidate Starts for Kwadwo_46:

(Start: 17 @40055 has 57 MA's), (Start: 19 @40049 has 3 MA's), (Start: 21 @40046 has 1 MA's),
(Start: 36 @39971 has 204 MA's), (47, 39908), (48, 39905), (50, 39902), (65, 39848), (108, 39635),
(121, 39569), (139, 39428),

Gene: Kwksand96_46 Start: 39846, Stop: 39286, Start Num: 36

Candidate Starts for Kwksand96_46:

(Start: 17 @39930 has 57 MA's), (Start: 19 @39924 has 3 MA's), (Start: 21 @39921 has 1 MA's),
(Start: 36 @39846 has 204 MA's), (47, 39777), (48, 39774), (50, 39771), (90, 39606), (108, 39504),
(139, 39297),

Gene: LRRHood_96 Start: 51308, Stop: 51940, Start Num: 29

Candidate Starts for LRRHood_96:

(Start: 29 @51308 has 172 MA's), (98, 51647), (110, 51725), (129, 51833), (141, 51935),

Gene: Labeouficaum_46 Start: 39841, Stop: 39281, Start Num: 36

Candidate Starts for Labeouficaum_46:

(Start: 17 @39925 has 57 MA's), (Start: 19 @39919 has 3 MA's), (Start: 21 @39916 has 1 MA's),
(Start: 36 @39841 has 204 MA's), (47, 39772), (48, 39769), (50, 39766), (90, 39601), (108, 39499),
(139, 39292),

Gene: LasagnaCat_48 Start: 40417, Stop: 39857, Start Num: 36

Candidate Starts for LasagnaCat_48:

(Start: 17 @40501 has 57 MA's), (Start: 19 @40495 has 3 MA's), (Start: 21 @40492 has 1 MA's),
(Start: 36 @40417 has 204 MA's), (47, 40348), (48, 40345), (50, 40342), (65, 40288), (108, 40075),

Gene: Lasso_47 Start: 40246, Stop: 39692, Start Num: 36

Candidate Starts for Lasso_47:

(Start: 17 @40330 has 57 MA's), (Start: 19 @40324 has 3 MA's), (Start: 21 @40321 has 1 MA's),
(Start: 36 @40246 has 204 MA's), (47, 40183), (48, 40180), (50, 40177), (65, 40123), (108, 39910),
(121, 39844), (139, 39703),

Gene: Latch_101 Start: 50338, Stop: 50970, Start Num: 29

Candidate Starts for Latch_101:

(Start: 8 @50251 has 5 MA's), (Start: 29 @50338 has 172 MA's), (98, 50677), (110, 50755), (129,
50863), (141, 50965),

Gene: Lee7_99 Start: 52340, Stop: 52972, Start Num: 29

Candidate Starts for Lee7_99:

(Start: 29 @52340 has 172 MA's), (98, 52679), (110, 52757), (129, 52865), (141, 52967),

Gene: LeeLot_47 Start: 40367, Stop: 39723, Start Num: 17

Candidate Starts for LeeLot_47:

(Start: 17 @40367 has 57 MA's), (Start: 19 @40361 has 3 MA's), (Start: 21 @40358 has 1 MA's),
(Start: 36 @40283 has 204 MA's), (47, 40214), (48, 40211), (50, 40208), (90, 40043), (108, 39941),
(139, 39734),

Gene: Lego3393_46 Start: 40426, Stop: 39866, Start Num: 36

Candidate Starts for Lego3393_46:

(Start: 17 @40510 has 57 MA's), (Start: 19 @40504 has 3 MA's), (Start: 21 @40501 has 1 MA's),
(Start: 36 @40426 has 204 MA's), (47, 40357), (48, 40354), (50, 40351), (65, 40297), (108, 40084),

Gene: Legolas_47 Start: 40016, Stop: 39462, Start Num: 36

Candidate Starts for Legolas_47:

(Start: 17 @40100 has 57 MA's), (Start: 19 @40094 has 3 MA's), (Start: 21 @40091 has 1 MA's),
(Start: 36 @40016 has 204 MA's), (47, 39953), (48, 39950), (50, 39947), (65, 39893), (108, 39680),
(121, 39614), (139, 39473),

Gene: LeiMonet_48 Start: 39978, Stop: 39424, Start Num: 36

Candidate Starts for LeiMonet_48:

(Start: 17 @40062 has 57 MA's), (Start: 19 @40056 has 3 MA's), (Start: 21 @40053 has 1 MA's),
(Start: 36 @39978 has 204 MA's), (47, 39915), (48, 39912), (50, 39909), (65, 39855), (108, 39642),
(139, 39435),

Gene: LemonSlice_47 Start: 39983, Stop: 39423, Start Num: 36

Candidate Starts for LemonSlice_47:

(Start: 17 @40067 has 57 MA's), (Start: 19 @40061 has 3 MA's), (Start: 21 @40058 has 1 MA's),
(Start: 36 @39983 has 204 MA's), (47, 39914), (48, 39911), (50, 39908), (90, 39743), (108, 39641),
(139, 39434),

Gene: Lethe_101 Start: 51781, Stop: 52413, Start Num: 29

Candidate Starts for Lethe_101:

(Start: 29 @51781 has 172 MA's), (98, 52120), (110, 52198), (129, 52306), (141, 52408),

Gene: LifeSavor_100 Start: 50939, Stop: 51658, Start Num: 8

Candidate Starts for LifeSavor_100:

(Start: 8 @50939 has 5 MA's), (Start: 29 @51026 has 172 MA's), (98, 51365), (110, 51443), (129,
51551), (141, 51653),

Gene: LinStu_101 Start: 51916, Stop: 52548, Start Num: 29

Candidate Starts for LinStu_101:

(Start: 29 @51916 has 172 MA's), (98, 52255), (110, 52333), (129, 52441), (141, 52543),

Gene: Littleton_101 Start: 51158, Stop: 51790, Start Num: 29

Candidate Starts for Littleton_101:

(4, 51047), (Start: 29 @51158 has 172 MA's), (98, 51497), (110, 51575), (129, 51683), (141, 51785),

Gene: Loanshark_101 Start: 51927, Stop: 52565, Start Num: 29

Candidate Starts for Loanshark_101:

(Start: 29 @51927 has 172 MA's), (98, 52272), (110, 52350), (129, 52458), (141, 52560),

Gene: LolaVince_102 Start: 52032, Stop: 52664, Start Num: 29

Candidate Starts for LolaVince_102:

(Start: 8 @51945 has 5 MA's), (Start: 29 @52032 has 172 MA's), (98, 52371), (110, 52449), (129,
52557), (141, 52659),

Gene: Longacauda_46 Start: 39979, Stop: 39425, Start Num: 36

Candidate Starts for Longacauda_46:

(Start: 17 @40063 has 57 MA's), (Start: 19 @40057 has 3 MA's), (Start: 21 @40054 has 1 MA's),
(Start: 36 @39979 has 204 MA's), (47, 39916), (48, 39913), (50, 39910), (65, 39856), (108, 39643),
(121, 39577), (139, 39436),

Gene: Lopsy_46 Start: 39916, Stop: 39278, Start Num: 17

Candidate Starts for Lopsy_46:

(Start: 17 @39916 has 57 MA's), (Start: 19 @39910 has 3 MA's), (Start: 21 @39907 has 1 MA's),
(Start: 36 @39832 has 204 MA's), (47, 39769), (48, 39766), (50, 39763), (90, 39598), (108, 39496),
(139, 39289),

Gene: LordLeafolot_105 Start: 52996, Stop: 53628, Start Num: 29

Candidate Starts for LordLeafolot_105:

(Start: 8 @52909 has 5 MA's), (Start: 29 @52996 has 172 MA's), (98, 53335), (110, 53413), (129,
53521), (141, 53623),

Gene: LostAndPhound_46 Start: 39986, Stop: 39426, Start Num: 36

Candidate Starts for LostAndPhound_46:

(Start: 17 @40070 has 57 MA's), (Start: 19 @40064 has 3 MA's), (Start: 21 @40061 has 1 MA's),
(Start: 36 @39986 has 204 MA's), (47, 39917), (48, 39914), (50, 39911), (108, 39644), (121, 39578),
(139, 39437),

Gene: LuckyMarjie_46 Start: 39986, Stop: 39432, Start Num: 36

Candidate Starts for LuckyMarjie_46:

(Start: 17 @40070 has 57 MA's), (Start: 19 @40064 has 3 MA's), (Start: 21 @40061 has 1 MA's),
(Start: 36 @39986 has 204 MA's), (47, 39923), (48, 39920), (50, 39917), (65, 39863), (108, 39650),
(121, 39584), (139, 39443),

Gene: Lukilu_92 Start: 51439, Stop: 52071, Start Num: 29

Candidate Starts for Lukilu_92:

(Start: 29 @51439 has 172 MA's), (98, 51778), (110, 51856), (129, 51964), (141, 52066),

Gene: Lulumae_46 Start: 40055, Stop: 39417, Start Num: 17

Candidate Starts for Lulumae_46:

(Start: 17 @40055 has 57 MA's), (Start: 19 @40049 has 3 MA's), (Start: 21 @40046 has 1 MA's),
(Start: 36 @39971 has 204 MA's), (47, 39908), (48, 39905), (50, 39902), (65, 39848), (108, 39635),
(121, 39569), (139, 39428),

Gene: Lulwa_47 Start: 40264, Stop: 39704, Start Num: 36

Candidate Starts for Lulwa_47:

(Start: 17 @40348 has 57 MA's), (Start: 19 @40342 has 3 MA's), (Start: 21 @40339 has 1 MA's),
(Start: 36 @40264 has 204 MA's), (47, 40195), (48, 40192), (50, 40189), (65, 40135), (90, 40024),
(108, 39922), (139, 39715),

Gene: Lumine_46 Start: 39967, Stop: 39413, Start Num: 36

Candidate Starts for Lumine_46:

(Start: 17 @40051 has 57 MA's), (Start: 19 @40045 has 3 MA's), (Start: 21 @40042 has 1 MA's),
(Start: 36 @39967 has 204 MA's), (47, 39904), (48, 39901), (50, 39898), (65, 39844), (108, 39631),
(121, 39565), (139, 39424),

Gene: MRabcd_46 Start: 39977, Stop: 39417, Start Num: 36

Candidate Starts for MRabcd_46:

(Start: 17 @40061 has 57 MA's), (Start: 19 @40055 has 3 MA's), (Start: 21 @40052 has 1 MA's),
(Start: 36 @39977 has 204 MA's), (47, 39908), (48, 39905), (50, 39902), (65, 39848), (108, 39635),
(139, 39428),

Gene: Maby2021_101 Start: 51803, Stop: 52435, Start Num: 29

Candidate Starts for Maby2021_101:

(Start: 29 @51803 has 172 MA's), (98, 52142), (110, 52220), (129, 52328), (141, 52430),

Gene: Mag7_46 Start: 39886, Stop: 39326, Start Num: 36

Candidate Starts for Mag7_46:

(Start: 17 @39970 has 57 MA's), (Start: 19 @39964 has 3 MA's), (Start: 21 @39961 has 1 MA's),
(Start: 36 @39886 has 204 MA's), (48, 39814), (50, 39811), (65, 39757), (90, 39646), (108, 39544),
(139, 39337),

Gene: Magic8_47 Start: 40321, Stop: 39761, Start Num: 36

Candidate Starts for Magic8_47:

(Start: 17 @40405 has 57 MA's), (Start: 19 @40399 has 3 MA's), (Start: 21 @40396 has 1 MA's),
(Start: 36 @40321 has 204 MA's), (48, 40249), (50, 40246), (65, 40192), (90, 40081), (108, 39979),
(139, 39772),

Gene: Mahdia_50 Start: 37783, Stop: 37172, Start Num: 18

Candidate Starts for Mahdia_50:

(Start: 18 @37783 has 1 MA's), (67, 37585), (98, 37432), (100, 37426), (104, 37408), (127, 37285), (131, 37255),

Gene: MakoManhole_42 Start: 35872, Stop: 35297, Start Num: 28

Candidate Starts for MakoManhole_42:

(Start: 28 @35872 has 8 MA's), (38, 35833), (64, 35722), (73, 35683), (99, 35560), (102, 35548), (104, 35539), (109, 35497), (110, 35494), (111, 35491), (113, 35482),

Gene: Mana_46 Start: 39986, Stop: 39432, Start Num: 36

Candidate Starts for Mana_46:

(Start: 17 @40070 has 57 MA's), (Start: 21 @40061 has 1 MA's), (Start: 36 @39986 has 204 MA's), (47, 39923), (48, 39920), (50, 39917), (65, 39863), (108, 39650), (121, 39584), (139, 39443),

Gene: Manad_46 Start: 39912, Stop: 39277, Start Num: 21

Candidate Starts for Manad_46:

(3, 40035), (13, 39930), (Start: 19 @39915 has 3 MA's), (Start: 21 @39912 has 1 MA's), (Start: 36 @39837 has 204 MA's), (47, 39768), (48, 39765), (50, 39762), (90, 39597), (108, 39495), (139, 39288),

Gene: Mangeria_101 Start: 51872, Stop: 52504, Start Num: 29

Candidate Starts for Mangeria_101:

(Start: 29 @51872 has 172 MA's), (98, 52211), (110, 52289), (129, 52397), (141, 52499),

Gene: Maru_46 Start: 39929, Stop: 39375, Start Num: 36

Candidate Starts for Maru_46:

(Start: 17 @40013 has 57 MA's), (Start: 19 @40007 has 3 MA's), (Start: 21 @40004 has 1 MA's), (Start: 36 @39929 has 204 MA's), (47, 39866), (48, 39863), (50, 39860), (65, 39806), (108, 39593), (121, 39527), (139, 39386),

Gene: Maskar_47 Start: 40051, Stop: 39407, Start Num: 17

Candidate Starts for Maskar_47:

(Start: 17 @40051 has 57 MA's), (Start: 19 @40045 has 3 MA's), (Start: 21 @40042 has 1 MA's), (Start: 36 @39967 has 204 MA's), (47, 39898), (48, 39895), (50, 39892), (65, 39838), (108, 39625),

Gene: Matalotodo_47 Start: 40281, Stop: 39721, Start Num: 36

Candidate Starts for Matalotodo_47:

(Start: 17 @40365 has 57 MA's), (Start: 19 @40359 has 3 MA's), (Start: 21 @40356 has 1 MA's), (Start: 36 @40281 has 204 MA's), (47, 40212), (48, 40209), (50, 40206), (90, 40041), (108, 39939), (139, 39732),

Gene: Matsumoto_98 Start: 50654, Stop: 51286, Start Num: 29

Candidate Starts for Matsumoto_98:

(Start: 8 @50567 has 5 MA's), (Start: 29 @50654 has 172 MA's), (98, 50993), (110, 51071), (129, 51179), (141, 51281),

Gene: McGee_103 Start: 50410, Stop: 51042, Start Num: 29

Candidate Starts for McGee_103:

(Start: 29 @50410 has 172 MA's), (98, 50749), (110, 50827), (129, 50935), (141, 51037),

Gene: McWolfish_99 Start: 51587, Stop: 52225, Start Num: 29

Candidate Starts for McWolfish_99:

(Start: 29 @51587 has 172 MA's), (98, 51932), (110, 52010), (129, 52118), (141, 52220),

Gene: Mcshane_46 Start: 40062, Stop: 39418, Start Num: 17

Candidate Starts for Mcshane_46:

(Start: 17 @40062 has 57 MA's), (Start: 19 @40056 has 3 MA's), (Start: 21 @40053 has 1 MA's),
(Start: 36 @39978 has 204 MA's), (47, 39909), (48, 39906), (50, 39903), (65, 39849), (108, 39636),
(139, 39429),

Gene: Mecca_46 Start: 39984, Stop: 39424, Start Num: 36

Candidate Starts for Mecca_46:

(Start: 17 @40068 has 57 MA's), (Start: 19 @40062 has 3 MA's), (Start: 21 @40059 has 1 MA's),
(Start: 36 @39984 has 204 MA's), (47, 39915), (48, 39912), (50, 39909), (65, 39855), (108, 39642),
(139, 39435),

Gene: Megamind_100 Start: 51470, Stop: 52108, Start Num: 29

Candidate Starts for Megamind_100:

(Start: 29 @51470 has 172 MA's), (98, 51815), (110, 51893), (129, 52001), (141, 52103),

Gene: Megamind20_47 Start: 40006, Stop: 39446, Start Num: 36

Candidate Starts for Megamind20_47:

(Start: 17 @40090 has 57 MA's), (Start: 19 @40084 has 3 MA's), (Start: 21 @40081 has 1 MA's),
(Start: 36 @40006 has 204 MA's), (47, 39937), (48, 39934), (50, 39931), (65, 39877), (108, 39664),
(139, 39457),

Gene: Megatron_48 Start: 40498, Stop: 39854, Start Num: 17

Candidate Starts for Megatron_48:

(Start: 17 @40498 has 57 MA's), (Start: 19 @40492 has 3 MA's), (Start: 21 @40489 has 1 MA's),
(Start: 36 @40414 has 204 MA's), (47, 40345), (48, 40342), (50, 40339), (65, 40285), (108, 40072),

Gene: Melc17_47 Start: 40360, Stop: 39716, Start Num: 17

Candidate Starts for Melc17_47:

(Start: 17 @40360 has 57 MA's), (Start: 19 @40354 has 3 MA's), (Start: 21 @40351 has 1 MA's),
(Start: 36 @40276 has 204 MA's), (47, 40207), (48, 40204), (50, 40201), (65, 40147), (90, 40036),
(108, 39934), (139, 39727),

Gene: Melpomini_95 Start: 48945, Stop: 49577, Start Num: 29

Candidate Starts for Melpomini_95:

(Start: 29 @48945 has 172 MA's), (98, 49284), (110, 49362), (129, 49470), (141, 49572),

Gene: MelsMeow_47 Start: 40017, Stop: 39457, Start Num: 36

Candidate Starts for MelsMeow_47:

(Start: 17 @40101 has 57 MA's), (Start: 19 @40095 has 3 MA's), (Start: 21 @40092 has 1 MA's),
(Start: 36 @40017 has 204 MA's), (47, 39948), (48, 39945), (50, 39942), (65, 39888), (108, 39675),

Gene: Merry_ Start: 11517, Stop: 12002, Start Num: 51

Candidate Starts for Merry_:

(Start: 51 @11517 has 2 MA's), (81, 11652), (89, 11685), (98, 11730), (106, 11772), (111, 11811),
(119, 11850), (128, 11907), (132, 11925), (136, 11982),

Gene: Mesh1_47 Start: 40293, Stop: 39733, Start Num: 36

Candidate Starts for Mesh1_47:

(Start: 17 @40377 has 57 MA's), (Start: 19 @40371 has 3 MA's), (Start: 21 @40368 has 1 MA's),
(Start: 36 @40293 has 204 MA's), (47, 40224), (48, 40221), (50, 40218), (90, 40053), (108, 39951),
(139, 39744),

Gene: Mesmerelda_48 Start: 39988, Stop: 39434, Start Num: 36

Candidate Starts for Mesmerelda_48:

(Start: 17 @40072 has 57 MA's), (Start: 19 @40066 has 3 MA's), (Start: 21 @40063 has 1 MA's),
(Start: 36 @39988 has 204 MA's), (47, 39925), (48, 39922), (50, 39919), (65, 39865), (108, 39652),
(121, 39586), (139, 39445),

Gene: MichaelPhcott_46 Start: 39883, Stop: 39323, Start Num: 36

Candidate Starts for MichaelPhcott_46:

(Start: 17 @39967 has 57 MA's), (Start: 19 @39961 has 3 MA's), (Start: 21 @39958 has 1 MA's),
(Start: 36 @39883 has 204 MA's), (48, 39811), (50, 39808), (65, 39754), (90, 39643), (108, 39541),
(139, 39334),

Gene: MikeLiesIn_102 Start: 51817, Stop: 52455, Start Num: 29

Candidate Starts for MikeLiesIn_102:

(Start: 29 @51817 has 172 MA's), (98, 52162), (110, 52240), (129, 52348), (141, 52450),

Gene: Mikota_47 Start: 40263, Stop: 39703, Start Num: 36

Candidate Starts for Mikota_47:

(Start: 29 @40305 has 172 MA's), (Start: 36 @40263 has 204 MA's), (47, 40194), (48, 40191), (50,
40188), (65, 40134), (108, 39921), (139, 39714),

Gene: Mikro_99 Start: 53045, Stop: 53677, Start Num: 29

Candidate Starts for Mikro_99:

(Start: 29 @53045 has 172 MA's), (98, 53384), (110, 53462), (129, 53570), (141, 53672),

Gene: MiniBoss_47 Start: 40269, Stop: 39709, Start Num: 36

Candidate Starts for MiniBoss_47:

(Start: 29 @40311 has 172 MA's), (Start: 36 @40269 has 204 MA's), (47, 40200), (48, 40197), (50,
40194), (108, 39927), (121, 39861), (139, 39720),

Gene: MitKao_47 Start: 39984, Stop: 39424, Start Num: 36

Candidate Starts for MitKao_47:

(Start: 17 @40068 has 57 MA's), (Start: 19 @40062 has 3 MA's), (Start: 21 @40059 has 1 MA's),
(Start: 36 @39984 has 204 MA's), (47, 39915), (48, 39912), (50, 39909), (90, 39744), (108, 39642),
(139, 39435),

Gene: MoMoMixon_102 Start: 51293, Stop: 51931, Start Num: 29

Candidate Starts for MoMoMixon_102:

(Start: 29 @51293 has 172 MA's), (98, 51638), (110, 51716), (129, 51824), (141, 51926),

Gene: ModicumRichard_152 Start: 79699, Stop: 79190, Start Num: 49

Candidate Starts for ModicumRichard_152:

(37, 79780), (45, 79741), (Start: 49 @79699 has 4 MA's), (63, 79657), (80, 79552), (92, 79507), (105,
79435), (126, 79318), (135, 79234),

Gene: Momo_100 Start: 50338, Stop: 50970, Start Num: 29

Candidate Starts for Momo_100:

(Start: 8 @50251 has 5 MA's), (Start: 29 @50338 has 172 MA's), (110, 50755), (129, 50863), (141,
50965),

Gene: Morgana_159 Start: 80415, Stop: 79906, Start Num: 49

Candidate Starts for Morgana_159:

(37, 80496), (39, 80487), (45, 80457), (Start: 49 @80415 has 4 MA's), (63, 80373), (80, 80268), (92, 80223), (126, 80034), (135, 79950),

Gene: Morgushi_47 Start: 39985, Stop: 39425, Start Num: 36

Candidate Starts for Morgushi_47:

(Start: 17 @40069 has 57 MA's), (Start: 19 @40063 has 3 MA's), (Start: 21 @40060 has 1 MA's), (Start: 36 @39985 has 204 MA's), (47, 39916), (48, 39913), (50, 39910), (65, 39856), (108, 39643), (121, 39577), (139, 39436),

Gene: Morizzled23_101 Start: 50697, Stop: 51335, Start Num: 29

Candidate Starts for Morizzled23_101:

(Start: 29 @50697 has 172 MA's), (98, 51042), (110, 51120), (129, 51228), (141, 51330),

Gene: Morty_48 Start: 40423, Stop: 39863, Start Num: 36

Candidate Starts for Morty_48:

(Start: 17 @40507 has 57 MA's), (Start: 19 @40501 has 3 MA's), (Start: 21 @40498 has 1 MA's), (Start: 36 @40423 has 204 MA's), (47, 40354), (48, 40351), (50, 40348), (65, 40294), (108, 40081),

Gene: Mosaic_46 Start: 40062, Stop: 39418, Start Num: 17

Candidate Starts for Mosaic_46:

(Start: 17 @40062 has 57 MA's), (Start: 19 @40056 has 3 MA's), (Start: 21 @40053 has 1 MA's), (Start: 36 @39978 has 204 MA's), (47, 39909), (48, 39906), (50, 39903), (90, 39738), (108, 39636), (139, 39429),

Gene: MossRose_42 Start: 35851, Stop: 35276, Start Num: 28

Candidate Starts for MossRose_42:

(Start: 28 @35851 has 8 MA's), (38, 35812), (64, 35701), (73, 35662), (99, 35539), (102, 35527), (104, 35518), (109, 35476), (110, 35473), (111, 35470), (113, 35461),

Gene: MrPhizzler_46 Start: 39987, Stop: 39433, Start Num: 36

Candidate Starts for MrPhizzler_46:

(Start: 17 @40071 has 57 MA's), (Start: 19 @40065 has 3 MA's), (Start: 21 @40062 has 1 MA's), (Start: 36 @39987 has 204 MA's), (47, 39924), (48, 39921), (50, 39918), (65, 39864), (108, 39651), (121, 39585), (139, 39444),

Gene: Mulan_47 Start: 40140, Stop: 39580, Start Num: 36

Candidate Starts for Mulan_47:

(Start: 17 @40224 has 57 MA's), (Start: 19 @40218 has 3 MA's), (Start: 21 @40215 has 1 MA's), (Start: 36 @40140 has 204 MA's), (47, 40071), (48, 40068), (50, 40065), (65, 40011), (108, 39798),

Gene: Murdoc_47 Start: 40355, Stop: 39717, Start Num: 17

Candidate Starts for Murdoc_47:

(Start: 17 @40355 has 57 MA's), (Start: 19 @40349 has 3 MA's), (Start: 21 @40346 has 1 MA's), (Start: 36 @40271 has 204 MA's), (47, 40208), (48, 40205), (50, 40202), (65, 40148), (108, 39935), (121, 39869), (139, 39728),

Gene: Mutante_46 Start: 39990, Stop: 39430, Start Num: 36

Candidate Starts for Mutante_46:

(Start: 17 @40074 has 57 MA's), (Start: 19 @40068 has 3 MA's), (Start: 21 @40065 has 1 MA's), (Start: 36 @39990 has 204 MA's), (47, 39921), (48, 39918), (50, 39915), (65, 39861), (108, 39648), (139, 39441),

Gene: Myrna_229 Start: 133429, Stop: 134043, Start Num: 29

Candidate Starts for Myrna_229:

(Start: 29 @133429 has 172 MA's), (40, 133477), (43, 133492), (55, 133555), (83, 133681), (98, 133750), (110, 133828), (129, 133936),

Gene: Mysterious_47 Start: 41019, Stop: 40390, Start Num: 29

Candidate Starts for Mysterious_47:

(Start: 29 @41019 has 172 MA's), (45, 40938), (48, 40902), (57, 40875), (59, 40869), (72, 40806), (93, 40710), (108, 40608), (110, 40596),

Gene: NHagos_40 Start: 34451, Stop: 33894, Start Num: 28

Candidate Starts for NHagos_40:

(1, 34970), (2, 34805), (10, 34526), (16, 34490), (20, 34481), (Start: 28 @34451 has 8 MA's), (44, 34388), (47, 34352), (65, 34301), (79, 34226), (104, 34136), (118, 34049), (136, 33914),

Gene: Nacho_0048 Start: 40501, Stop: 39857, Start Num: 17

Candidate Starts for Nacho_0048:

(Start: 17 @40501 has 57 MA's), (Start: 19 @40495 has 3 MA's), (Start: 21 @40492 has 1 MA's), (Start: 36 @40417 has 204 MA's), (47, 40348), (48, 40345), (50, 40342), (65, 40288), (108, 40075),

Gene: Naija_100 Start: 50338, Stop: 50970, Start Num: 29

Candidate Starts for Naija_100:

(Start: 8 @50251 has 5 MA's), (Start: 29 @50338 has 172 MA's), (98, 50677), (110, 50755), (129, 50863), (141, 50965),

Gene: Napoleon13_97 Start: 49383, Stop: 50015, Start Num: 29

Candidate Starts for Napoleon13_97:

(Start: 29 @49383 has 172 MA's), (98, 49722), (110, 49800), (129, 49908), (141, 50010),

Gene: Nappy_104 Start: 52733, Stop: 53365, Start Num: 29

Candidate Starts for Nappy_104:

(12, 52670), (Start: 29 @52733 has 172 MA's), (98, 53072), (110, 53150), (129, 53258), (141, 53360),

Gene: Nathan_48 Start: 40399, Stop: 39755, Start Num: 17

Candidate Starts for Nathan_48:

(Start: 17 @40399 has 57 MA's), (Start: 19 @40393 has 3 MA's), (Start: 21 @40390 has 1 MA's), (Start: 36 @40315 has 204 MA's), (47, 40246), (48, 40243), (50, 40240), (65, 40186), (108, 39973), (121, 39907), (139, 39766),

Gene: Naval22_106 Start: 53313, Stop: 53945, Start Num: 29

Candidate Starts for Naval22_106:

(Start: 29 @53313 has 172 MA's), (98, 53652), (110, 53730), (129, 53838), (141, 53940),

Gene: NedWong_102 Start: 51804, Stop: 52442, Start Num: 29

Candidate Starts for NedWong_102:

(Start: 29 @51804 has 172 MA's), (98, 52149), (110, 52227), (129, 52335), (141, 52437),

Gene: Nehemiah_45 Start: 41019, Stop: 40390, Start Num: 29

Candidate Starts for Nehemiah_45:

(Start: 29 @41019 has 172 MA's), (45, 40938), (48, 40902), (57, 40875), (59, 40869), (72, 40806), (93, 40710), (108, 40608), (110, 40596),

Gene: Newman_47 Start: 40360, Stop: 39716, Start Num: 17

Candidate Starts for Newman_47:

(Start: 17 @40360 has 57 MA's), (Start: 19 @40354 has 3 MA's), (Start: 21 @40351 has 1 MA's), (Start: 36 @40276 has 204 MA's), (47, 40207), (48, 40204), (50, 40201), (65, 40147), (90, 40036), (108, 39934), (139, 39727),

Gene: Ngannou_97 Start: 49320, Stop: 49952, Start Num: 29

Candidate Starts for Ngannou_97:

(Start: 8 @49233 has 5 MA's), (Start: 29 @49320 has 172 MA's), (98, 49659), (110, 49737), (129, 49845), (141, 49947),

Gene: Nicole21_47 Start: 40277, Stop: 39717, Start Num: 36

Candidate Starts for Nicole21_47:

(Start: 17 @40361 has 57 MA's), (Start: 19 @40355 has 3 MA's), (Start: 21 @40352 has 1 MA's), (Start: 36 @40277 has 204 MA's), (48, 40205), (50, 40202), (65, 40148), (90, 40037), (108, 39935), (139, 39728),

Gene: Nidhogg_102 Start: 51544, Stop: 52176, Start Num: 29

Candidate Starts for Nidhogg_102:

(Start: 29 @51544 has 172 MA's), (98, 51883), (110, 51961), (129, 52069), (141, 52171),

Gene: NoodleTree_108 Start: 52136, Stop: 52768, Start Num: 29

Candidate Starts for NoodleTree_108:

(Start: 8 @52049 has 5 MA's), (Start: 29 @52136 has 172 MA's), (98, 52475), (110, 52553), (129, 52661), (141, 52763),

Gene: Norm_102 Start: 52733, Stop: 53371, Start Num: 29

Candidate Starts for Norm_102:

(Start: 29 @52733 has 172 MA's), (98, 53078), (110, 53156), (129, 53264), (141, 53366),

Gene: NuevoMundo_107 Start: 54087, Stop: 54719, Start Num: 29

Candidate Starts for NuevoMundo_107:

(Start: 29 @54087 has 172 MA's), (98, 54426), (110, 54504), (129, 54612), (141, 54714),

Gene: Numberten_47 Start: 40283, Stop: 39723, Start Num: 36

Candidate Starts for Numberten_47:

(Start: 17 @40367 has 57 MA's), (Start: 19 @40361 has 3 MA's), (Start: 21 @40358 has 1 MA's), (Start: 36 @40283 has 204 MA's), (47, 40214), (48, 40211), (50, 40208), (65, 40154), (90, 40043), (108, 39941), (139, 39734),

Gene: Nyala_46 Start: 40066, Stop: 39422, Start Num: 17

Candidate Starts for Nyala_46:

(Start: 17 @40066 has 57 MA's), (Start: 19 @40060 has 3 MA's), (Start: 21 @40057 has 1 MA's), (Start: 36 @39982 has 204 MA's), (47, 39913), (48, 39910), (50, 39907), (90, 39742), (108, 39640), (139, 39433),

Gene: OSmaximus_48 Start: 40540, Stop: 39896, Start Num: 17

Candidate Starts for OSmaximus_48:

(Start: 17 @40540 has 57 MA's), (Start: 19 @40534 has 3 MA's), (Start: 21 @40531 has 1 MA's), (Start: 36 @40456 has 204 MA's), (47, 40387), (48, 40384), (50, 40381), (65, 40327), (108, 40114),

Gene: ObLaDi_152 Start: 79698, Stop: 79189, Start Num: 49

Candidate Starts for ObLaDi_152:

(12, 79890), (37, 79779), (45, 79740), (Start: 49 @79698 has 4 MA's), (63, 79656), (68, 79635), (80, 79551), (92, 79506), (105, 79434), (126, 79317), (135, 79233),

Gene: Olak_46 Start: 39985, Stop: 39425, Start Num: 36

Candidate Starts for Olak_46:

(Start: 17 @40069 has 57 MA's), (Start: 19 @40063 has 3 MA's), (Start: 21 @40060 has 1 MA's),
(Start: 36 @39985 has 204 MA's), (47, 39916), (48, 39913), (50, 39910), (108, 39643), (139, 39436),

Gene: Oline_46 Start: 39845, Stop: 39285, Start Num: 36

Candidate Starts for Oline_46:

(Start: 17 @39929 has 57 MA's), (Start: 19 @39923 has 3 MA's), (Start: 21 @39920 has 1 MA's),
(Start: 36 @39845 has 204 MA's), (47, 39776), (48, 39773), (50, 39770), (65, 39716), (90, 39605),
(108, 39503), (139, 39296),

Gene: Olive_47 Start: 40356, Stop: 39712, Start Num: 17

Candidate Starts for Olive_47:

(Start: 17 @40356 has 57 MA's), (Start: 19 @40350 has 3 MA's), (Start: 21 @40347 has 1 MA's),
(Start: 36 @40272 has 204 MA's), (47, 40203), (48, 40200), (50, 40197), (65, 40143), (108, 39930),
(139, 39723),

Gene: OliverWalter_47 Start: 40378, Stop: 39734, Start Num: 17

Candidate Starts for OliverWalter_47:

(Start: 17 @40378 has 57 MA's), (Start: 19 @40372 has 3 MA's), (Start: 21 @40369 has 1 MA's),
(Start: 36 @40294 has 204 MA's), (47, 40225), (48, 40222), (50, 40219), (65, 40165), (108, 39952),
(139, 39745),

Gene: Omniscient_47 Start: 40291, Stop: 39731, Start Num: 36

Candidate Starts for Omniscient_47:

(Start: 17 @40375 has 57 MA's), (Start: 19 @40369 has 3 MA's), (Start: 21 @40366 has 1 MA's),
(Start: 36 @40291 has 204 MA's), (47, 40222), (48, 40219), (50, 40216), (65, 40162), (108, 39949),
(139, 39742),

Gene: Oosterbaan_47 Start: 40363, Stop: 39719, Start Num: 17

Candidate Starts for Oosterbaan_47:

(Start: 17 @40363 has 57 MA's), (Start: 19 @40357 has 3 MA's), (Start: 21 @40354 has 1 MA's),
(Start: 36 @40279 has 204 MA's), (47, 40210), (48, 40207), (50, 40204), (90, 40039), (108, 39937),
(139, 39730),

Gene: Orfeu_46 Start: 39978, Stop: 39424, Start Num: 36

Candidate Starts for Orfeu_46:

(Start: 17 @40062 has 57 MA's), (Start: 19 @40056 has 3 MA's), (Start: 21 @40053 has 1 MA's),
(Start: 36 @39978 has 204 MA's), (47, 39915), (48, 39912), (50, 39909), (65, 39855), (108, 39642),
(121, 39576), (139, 39435),

Gene: Orion_48 Start: 40412, Stop: 39852, Start Num: 36

Candidate Starts for Orion_48:

(Start: 17 @40496 has 57 MA's), (Start: 19 @40490 has 3 MA's), (Start: 21 @40487 has 1 MA's),
(Start: 36 @40412 has 204 MA's), (47, 40343), (48, 40340), (50, 40337), (65, 40283), (108, 40070),

Gene: Orwigg_46 Start: 39978, Stop: 39418, Start Num: 36

Candidate Starts for Orwigg_46:

(Start: 17 @40062 has 57 MA's), (Start: 19 @40056 has 3 MA's), (Start: 21 @40053 has 1 MA's),
(Start: 36 @39978 has 204 MA's), (47, 39909), (48, 39906), (50, 39903), (65, 39849), (90, 39738),
(108, 39636), (139, 39429),

Gene: PG1_48 Start: 40425, Stop: 39865, Start Num: 36

Candidate Starts for PG1_48:

(Start: 17 @40509 has 57 MA's), (Start: 19 @40503 has 3 MA's), (Start: 21 @40500 has 1 MA's),
(Start: 36 @40425 has 204 MA's), (47, 40356), (48, 40353), (50, 40350), (65, 40296), (108, 40083),

Gene: Pacifista_46 Start: 39981, Stop: 39421, Start Num: 36

Candidate Starts for Pacifista_46:

(Start: 17 @40065 has 57 MA's), (Start: 19 @40059 has 3 MA's), (Start: 21 @40056 has 1 MA's),
(Start: 36 @39981 has 204 MA's), (47, 39912), (48, 39909), (50, 39906), (90, 39741), (108, 39639),
(139, 39432),

Gene: ParkTD_102 Start: 51800, Stop: 52438, Start Num: 29

Candidate Starts for ParkTD_102:

(Start: 29 @51800 has 172 MA's), (98, 52145), (110, 52223), (129, 52331), (141, 52433),

Gene: Patter_101 Start: 50355, Stop: 50987, Start Num: 29

Candidate Starts for Patter_101:

(Start: 8 @50268 has 5 MA's), (Start: 29 @50355 has 172 MA's), (98, 50694), (110, 50772), (129,
50880), (141, 50982),

Gene: PenguinLover67_48 Start: 42106, Stop: 41504, Start Num: 34

Candidate Starts for PenguinLover67_48:

(Start: 34 @42106 has 3 MA's), (48, 42019), (104, 41758), (108, 41722), (111, 41707), (116, 41683),
(125, 41638), (133, 41584),

Gene: Phabba_239 Start: 133129, Stop: 133758, Start Num: 31

Candidate Starts for Phabba_239:

(Start: 31 @133129 has 1 MA's), (40, 133177), (80, 133381), (93, 133426), (96, 133447), (98, 133465),
(103, 133486), (104, 133492), (107, 133522), (109, 133540), (137, 133735), (138, 133738), (140,
133750),

Gene: Phamished_48 Start: 40420, Stop: 39860, Start Num: 36

Candidate Starts for Phamished_48:

(Start: 17 @40504 has 57 MA's), (Start: 19 @40498 has 3 MA's), (Start: 21 @40495 has 1 MA's),
(Start: 36 @40420 has 204 MA's), (47, 40351), (48, 40348), (50, 40345), (65, 40291), (108, 40078),

Gene: Phareon_47 Start: 39980, Stop: 39426, Start Num: 36

Candidate Starts for Phareon_47:

(Start: 17 @40064 has 57 MA's), (Start: 19 @40058 has 3 MA's), (Start: 21 @40055 has 1 MA's),
(Start: 36 @39980 has 204 MA's), (47, 39917), (48, 39914), (50, 39911), (65, 39857), (108, 39644),
(121, 39578), (139, 39437),

Gene: PhatCats2014_48 Start: 40429, Stop: 39869, Start Num: 36

Candidate Starts for PhatCats2014_48:

(Start: 17 @40513 has 57 MA's), (Start: 19 @40507 has 3 MA's), (Start: 21 @40504 has 1 MA's),
(Start: 36 @40429 has 204 MA's), (47, 40360), (48, 40357), (50, 40354), (65, 40300), (108, 40087),

Gene: PhatLouie_47 Start: 40283, Stop: 39723, Start Num: 36

Candidate Starts for PhatLouie_47:

(Start: 17 @40367 has 57 MA's), (Start: 19 @40361 has 3 MA's), (Start: 21 @40358 has 1 MA's),
(Start: 36 @40283 has 204 MA's), (47, 40214), (48, 40211), (50, 40208), (90, 40043), (108, 39941),
(139, 39734),

Gene: Phelemich_45 Start: 41018, Stop: 40389, Start Num: 29

Candidate Starts for Phelemich_45:

(Start: 29 @41018 has 172 MA's), (45, 40937), (48, 40901), (57, 40874), (59, 40868), (72, 40805), (93, 40709), (108, 40607), (110, 40595),

Gene: PhenghisKhan_46 Start: 39973, Stop: 39329, Start Num: 17

Candidate Starts for PhenghisKhan_46:

(Start: 17 @39973 has 57 MA's), (Start: 19 @39967 has 3 MA's), (Start: 21 @39964 has 1 MA's), (Start: 36 @39889 has 204 MA's), (47, 39820), (48, 39817), (50, 39814), (65, 39760), (108, 39547), (139, 39340),

Gene: Pherdinand_48 Start: 40420, Stop: 39860, Start Num: 36

Candidate Starts for Pherdinand_48:

(Start: 17 @40504 has 57 MA's), (Start: 19 @40498 has 3 MA's), (Start: 21 @40495 has 1 MA's), (Start: 36 @40420 has 204 MA's), (47, 40351), (48, 40348), (50, 40345), (65, 40291), (108, 40078),

Gene: Phergie_46 Start: 39964, Stop: 39320, Start Num: 17

Candidate Starts for Phergie_46:

(Start: 17 @39964 has 57 MA's), (Start: 19 @39958 has 3 MA's), (Start: 21 @39955 has 1 MA's), (Start: 36 @39880 has 204 MA's), (47, 39811), (48, 39808), (50, 39805), (65, 39751), (108, 39538), (139, 39331),

Gene: Phlegm_103 Start: 50338, Stop: 50970, Start Num: 29

Candidate Starts for Phlegm_103:

(Start: 8 @50251 has 5 MA's), (Start: 29 @50338 has 172 MA's), (98, 50677), (110, 50755), (129, 50863), (141, 50965),

Gene: Phleuron_46 Start: 39970, Stop: 39326, Start Num: 17

Candidate Starts for Phleuron_46:

(Start: 17 @39970 has 57 MA's), (Start: 19 @39964 has 3 MA's), (Start: 21 @39961 has 1 MA's), (Start: 36 @39886 has 204 MA's), (48, 39814), (50, 39811), (65, 39757), (90, 39646), (108, 39544), (139, 39337),

Gene: Phox_98 Start: 52086, Stop: 52718, Start Num: 29

Candidate Starts for Phox_98:

(Start: 29 @52086 has 172 MA's), (98, 52425), (110, 52503), (129, 52611), (141, 52713),

Gene: PhrankReynolds_45 Start: 39970, Stop: 39326, Start Num: 17

Candidate Starts for PhrankReynolds_45:

(Start: 17 @39970 has 57 MA's), (Start: 19 @39964 has 3 MA's), (Start: 21 @39961 has 1 MA's), (Start: 36 @39886 has 204 MA's), (47, 39817), (48, 39814), (50, 39811), (65, 39757), (108, 39544), (139, 39337),

Gene: PhrodoBaggins_47 Start: 40408, Stop: 39848, Start Num: 36

Candidate Starts for PhrodoBaggins_47:

(Start: 17 @40492 has 57 MA's), (Start: 19 @40486 has 3 MA's), (Start: 21 @40483 has 1 MA's), (Start: 36 @40408 has 204 MA's), (47, 40339), (48, 40336), (50, 40333), (65, 40279), (108, 40066),

Gene: Phunky_47 Start: 40277, Stop: 39723, Start Num: 36

Candidate Starts for Phunky_47:

(Start: 17 @40361 has 57 MA's), (Start: 19 @40355 has 3 MA's), (Start: 21 @40352 has 1 MA's), (Start: 36 @40277 has 204 MA's), (47, 40214), (48, 40211), (50, 40208), (65, 40154), (108, 39941), (139, 39734),

Gene: Phusco_101 Start: 51103, Stop: 51735, Start Num: 29

Candidate Starts for Phusco_101:

(Start: 8 @51016 has 5 MA's), (Start: 29 @51103 has 172 MA's), (98, 51442), (110, 51520), (129, 51628), (141, 51730),

Gene: Pier_105 Start: 52448, Stop: 53080, Start Num: 29

Candidate Starts for Pier_105:

(Start: 29 @52448 has 172 MA's), (98, 52787), (110, 52865), (129, 52973), (141, 53075),

Gene: Piglet_0046 Start: 40390, Stop: 39830, Start Num: 36

Candidate Starts for Piglet_0046:

(Start: 17 @40474 has 57 MA's), (Start: 19 @40468 has 3 MA's), (Start: 21 @40465 has 1 MA's), (Start: 36 @40390 has 204 MA's), (47, 40321), (48, 40318), (50, 40315), (65, 40261), (90, 40150), (108, 40048), (139, 39841),

Gene: PinheadLarry_47 Start: 39990, Stop: 39436, Start Num: 36

Candidate Starts for PinheadLarry_47:

(Start: 17 @40074 has 57 MA's), (Start: 19 @40068 has 3 MA's), (Start: 21 @40065 has 1 MA's), (Start: 36 @39990 has 204 MA's), (47, 39927), (48, 39924), (50, 39921), (65, 39867), (108, 39654), (121, 39588), (139, 39447),

Gene: Pinkcreek_92 Start: 48897, Stop: 49529, Start Num: 29

Candidate Starts for Pinkcreek_92:

(Start: 29 @48897 has 172 MA's), (98, 49236), (110, 49314), (129, 49422), (141, 49524),

Gene: Pinkman_46 Start: 39839, Stop: 39279, Start Num: 36

Candidate Starts for Pinkman_46:

(Start: 17 @39923 has 57 MA's), (Start: 19 @39917 has 3 MA's), (Start: 21 @39914 has 1 MA's), (Start: 36 @39839 has 204 MA's), (47, 39770), (48, 39767), (50, 39764), (90, 39599), (108, 39497), (139, 39290),

Gene: Pio_105 Start: 53696, Stop: 54328, Start Num: 29

Candidate Starts for Pio_105:

(Start: 29 @53696 has 172 MA's), (98, 54035), (110, 54113), (129, 54221), (141, 54323),

Gene: Pipsqueak_47 Start: 40368, Stop: 39724, Start Num: 17

Candidate Starts for Pipsqueak_47:

(Start: 17 @40368 has 57 MA's), (Start: 19 @40362 has 3 MA's), (Start: 21 @40359 has 1 MA's), (Start: 36 @40284 has 204 MA's), (47, 40215), (48, 40212), (50, 40209), (65, 40155), (108, 39942), (139, 39735),

Gene: Pivoine_100 Start: 50338, Stop: 50970, Start Num: 29

Candidate Starts for Pivoine_100:

(Start: 8 @50251 has 5 MA's), (Start: 29 @50338 has 172 MA's), (98, 50677), (110, 50755), (129, 50863), (141, 50965),

Gene: Placalicious_46 Start: 39977, Stop: 39417, Start Num: 36

Candidate Starts for Placalicious_46:

(Start: 17 @40061 has 57 MA's), (Start: 19 @40055 has 3 MA's), (Start: 21 @40052 has 1 MA's), (Start: 36 @39977 has 204 MA's), (47, 39908), (48, 39905), (50, 39902), (90, 39737), (108, 39635), (139, 39428),

Gene: Plata_47 Start: 39995, Stop: 39435, Start Num: 36

Candidate Starts for Plata_47:

(Start: 17 @40079 has 57 MA's), (Start: 19 @40073 has 3 MA's), (Start: 21 @40070 has 1 MA's),
(Start: 36 @39995 has 204 MA's), (47, 39926), (48, 39923), (50, 39920), (65, 39866), (108, 39653),
(139, 39446),

Gene: Pleione_104 Start: 51973, Stop: 52605, Start Num: 29

Candidate Starts for Pleione_104:

(Start: 29 @51973 has 172 MA's), (98, 52312), (110, 52390), (129, 52498), (141, 52600),

Gene: Plmatters_47 Start: 40280, Stop: 39720, Start Num: 36

Candidate Starts for Plmatters_47:

(Start: 17 @40364 has 57 MA's), (Start: 19 @40358 has 3 MA's), (Start: 21 @40355 has 1 MA's),
(Start: 36 @40280 has 204 MA's), (47, 40211), (48, 40208), (50, 40205), (65, 40151), (90, 40040),
(108, 39938), (139, 39731),

Gene: Podrick_47 Start: 40271, Stop: 39711, Start Num: 36

Candidate Starts for Podrick_47:

(Start: 17 @40355 has 57 MA's), (Start: 19 @40349 has 3 MA's), (Start: 21 @40346 has 1 MA's),
(Start: 36 @40271 has 204 MA's), (47, 40202), (48, 40199), (50, 40196), (65, 40142), (90, 40031),
(108, 39929), (139, 39722),

Gene: Pops_47 Start: 40295, Stop: 39735, Start Num: 36

Candidate Starts for Pops_47:

(Start: 17 @40379 has 57 MA's), (Start: 19 @40373 has 3 MA's), (Start: 21 @40370 has 1 MA's),
(Start: 36 @40295 has 204 MA's), (47, 40226), (48, 40223), (50, 40220), (65, 40166), (90, 40055),
(108, 39953), (139, 39746),

Gene: Potter_46 Start: 39995, Stop: 39435, Start Num: 36

Candidate Starts for Potter_46:

(Start: 17 @40079 has 57 MA's), (Start: 19 @40073 has 3 MA's), (Start: 21 @40070 has 1 MA's),
(Start: 36 @39995 has 204 MA's), (47, 39926), (48, 39923), (50, 39920), (90, 39755), (108, 39653),
(139, 39446),

Gene: Prickles_47 Start: 40271, Stop: 39711, Start Num: 36

Candidate Starts for Prickles_47:

(Start: 17 @40355 has 57 MA's), (Start: 19 @40349 has 3 MA's), (Start: 21 @40346 has 1 MA's),
(Start: 36 @40271 has 204 MA's), (47, 40202), (48, 40199), (50, 40196), (65, 40142), (108, 39929),
(139, 39722),

Gene: Primadonna_95 Start: 50702, Stop: 51334, Start Num: 29

Candidate Starts for Primadonna_95:

(Start: 29 @50702 has 172 MA's), (98, 51041), (110, 51119), (129, 51227), (141, 51329),

Gene: ProfessorX_47 Start: 40272, Stop: 39712, Start Num: 36

Candidate Starts for ProfessorX_47:

(Start: 17 @40356 has 57 MA's), (Start: 19 @40350 has 3 MA's), (Start: 21 @40347 has 1 MA's),
(Start: 36 @40272 has 204 MA's), (47, 40203), (48, 40200), (50, 40197), (65, 40143), (108, 39930),
(139, 39723),

Gene: Puhltonio_47 Start: 40365, Stop: 39727, Start Num: 17

Candidate Starts for Puhltonio_47:

(Start: 17 @40365 has 57 MA's), (Start: 19 @40359 has 3 MA's), (Start: 21 @40356 has 1 MA's),
(Start: 36 @40281 has 204 MA's), (47, 40218), (48, 40215), (50, 40212), (65, 40158), (108, 39945),
(121, 39879), (139, 39738),

Gene: Poppers_48 Start: 36822, Stop: 36238, Start Num: 30

Candidate Starts for Poppers_48:

(27, 36834), (Start: 30 @36822 has 2 MA's), (32, 36813), (Start: 52 @36717 has 1 MA's), (74, 36612),
(78, 36591), (84, 36561), (136, 36258),

Gene: PurduePete_101 Start: 52225, Stop: 52863, Start Num: 29

Candidate Starts for PurduePete_101:

(Start: 29 @52225 has 172 MA's), (98, 52570), (110, 52648), (129, 52756), (141, 52858),

Gene: QBert_95 Start: 50881, Stop: 51513, Start Num: 29

Candidate Starts for QBert_95:

(Start: 29 @50881 has 172 MA's), (98, 51220), (110, 51298), (129, 51406), (141, 51508),

Gene: Quasimodo_102 Start: 51762, Stop: 52394, Start Num: 29

Candidate Starts for Quasimodo_102:

(Start: 29 @51762 has 172 MA's), (98, 52101), (110, 52179), (129, 52287), (141, 52389),

Gene: QueenBeane_47 Start: 40271, Stop: 39717, Start Num: 36

Candidate Starts for QueenBeane_47:

(Start: 17 @40355 has 57 MA's), (Start: 19 @40349 has 3 MA's), (Start: 21 @40346 has 1 MA's),
(Start: 36 @40271 has 204 MA's), (47, 40208), (48, 40205), (50, 40202), (65, 40148), (108, 39935),
(121, 39869), (139, 39728),

Gene: Quesadilla_48 Start: 42077, Stop: 41490, Start Num: 34

Candidate Starts for Quesadilla_48:

(Start: 34 @42077 has 3 MA's), (48, 41996), (50, 41993), (62, 41948), (104, 41744), (108, 41708),
(111, 41693), (116, 41669),

Gene: Quisquilliae_47 Start: 40308, Stop: 39748, Start Num: 36

Candidate Starts for Quisquilliae_47:

(Start: 17 @40392 has 57 MA's), (Start: 19 @40386 has 3 MA's), (Start: 21 @40383 has 1 MA's),
(Start: 36 @40308 has 204 MA's), (47, 40239), (48, 40236), (50, 40233), (65, 40179), (90, 40068),
(108, 39966), (139, 39759),

Gene: Rabinovish_99 Start: 51861, Stop: 52493, Start Num: 29

Candidate Starts for Rabinovish_99:

(Start: 29 @51861 has 172 MA's), (98, 52200), (110, 52278), (129, 52386), (141, 52488),

Gene: Rahel_100 Start: 50695, Stop: 51327, Start Num: 29

Candidate Starts for Rahel_100:

(Start: 8 @50608 has 5 MA's), (Start: 29 @50695 has 172 MA's), (98, 51034), (110, 51112), (129,
51220), (141, 51322),

Gene: RedMaple_47 Start: 40422, Stop: 39862, Start Num: 36

Candidate Starts for RedMaple_47:

(Start: 17 @40506 has 57 MA's), (Start: 19 @40500 has 3 MA's), (Start: 21 @40497 has 1 MA's),
(Start: 36 @40422 has 204 MA's), (47, 40353), (48, 40350), (50, 40347), (65, 40293), (108, 40080),

Gene: Reprobate_46 Start: 41023, Stop: 40394, Start Num: 29

Candidate Starts for Reprobate_46:

(Start: 29 @41023 has 172 MA's), (45, 40942), (48, 40906), (57, 40879), (59, 40873), (72, 40810), (93, 40714), (108, 40612), (110, 40600),

Gene: Ricotta_46 Start: 39994, Stop: 39440, Start Num: 36

Candidate Starts for Ricotta_46:

(Start: 17 @40078 has 57 MA's), (Start: 19 @40072 has 3 MA's), (Start: 21 @40069 has 1 MA's), (Start: 36 @39994 has 204 MA's), (47, 39931), (48, 39928), (50, 39925), (65, 39871), (108, 39658), (121, 39592), (139, 39451),

Gene: Riggan_47 Start: 40267, Stop: 39707, Start Num: 36

Candidate Starts for Riggan_47:

(Start: 17 @40351 has 57 MA's), (Start: 19 @40345 has 3 MA's), (Start: 21 @40342 has 1 MA's), (Start: 36 @40267 has 204 MA's), (47, 40198), (48, 40195), (50, 40192), (65, 40138), (108, 39925), (139, 39718),

Gene: Rimu_49 Start: 40007, Stop: 39453, Start Num: 36

Candidate Starts for Rimu_49:

(Start: 17 @40091 has 57 MA's), (Start: 19 @40085 has 3 MA's), (Start: 21 @40082 has 1 MA's), (Start: 36 @40007 has 204 MA's), (47, 39944), (48, 39941), (50, 39938), (65, 39884), (108, 39671), (121, 39605), (139, 39464),

Gene: Riverton_46 Start: 40369, Stop: 39725, Start Num: 17

Candidate Starts for Riverton_46:

(Start: 17 @40369 has 57 MA's), (Start: 19 @40363 has 3 MA's), (Start: 21 @40360 has 1 MA's), (Start: 36 @40285 has 204 MA's), (47, 40216), (48, 40213), (50, 40210), (65, 40156), (90, 40045), (108, 39943), (139, 39736),

Gene: Rizal_97 Start: 49756, Stop: 50475, Start Num: 8

Candidate Starts for Rizal_97:

(Start: 8 @49756 has 5 MA's), (Start: 29 @49843 has 172 MA's), (98, 50182), (110, 50260), (129, 50368), (141, 50470),

Gene: RoMag_96 Start: 51018, Stop: 51650, Start Num: 29

Candidate Starts for RoMag_96:

(14, 50976), (15, 50979), (Start: 29 @51018 has 172 MA's), (98, 51357), (110, 51435), (129, 51543), (141, 51645),

Gene: Robyn_46 Start: 39851, Stop: 39291, Start Num: 36

Candidate Starts for Robyn_46:

(Start: 17 @39935 has 57 MA's), (Start: 19 @39929 has 3 MA's), (Start: 21 @39926 has 1 MA's), (Start: 36 @39851 has 204 MA's), (47, 39782), (48, 39779), (50, 39776), (90, 39611), (108, 39509), (139, 39302),

Gene: Roliet_47 Start: 40279, Stop: 39719, Start Num: 36

Candidate Starts for Roliet_47:

(Start: 29 @40321 has 172 MA's), (Start: 36 @40279 has 204 MA's), (47, 40210), (48, 40207), (50, 40204), (65, 40150), (108, 39937), (139, 39730),

Gene: Ronan_95 Start: 48969, Stop: 49601, Start Num: 29

Candidate Starts for Ronan_95:

(Start: 29 @48969 has 172 MA's), (98, 49308), (110, 49386), (129, 49494), (141, 49596),

Gene: Roots515_100 Start: 51997, Stop: 52635, Start Num: 29

Candidate Starts for Roots515_100:

(Start: 29 @51997 has 172 MA's), (98, 52342), (110, 52420), (129, 52528), (141, 52630),

Gene: Roscoe_48 Start: 40517, Stop: 39957, Start Num: 36

Candidate Starts for Roscoe_48:

(Start: 17 @40601 has 57 MA's), (Start: 19 @40595 has 3 MA's), (Start: 21 @40592 has 1 MA's),
(Start: 36 @40517 has 204 MA's), (47, 40448), (48, 40445), (50, 40442), (65, 40388), (108, 40175),
(139, 39968),

Gene: Roy17_47 Start: 40055, Stop: 39417, Start Num: 17

Candidate Starts for Roy17_47:

(Start: 17 @40055 has 57 MA's), (Start: 19 @40049 has 3 MA's), (Start: 21 @40046 has 1 MA's),
(Start: 36 @39971 has 204 MA's), (47, 39908), (48, 39905), (50, 39902), (65, 39848), (108, 39635),
(121, 39569), (139, 39428),

Gene: SDcharge11_47 Start: 40299, Stop: 39697, Start Num: 29

Candidate Starts for SDcharge11_47:

(Start: 29 @40299 has 172 MA's), (Start: 36 @40257 has 204 MA's), (47, 40188), (48, 40185), (50,
40182), (65, 40128), (108, 39915), (139, 39708),

Gene: SVoro_99 Start: 52175, Stop: 52813, Start Num: 29

Candidate Starts for SVoro_99:

(Start: 29 @52175 has 172 MA's), (98, 52520), (110, 52598), (129, 52706), (141, 52808),

Gene: Saguaro_48 Start: 41742, Stop: 41140, Start Num: 34

Candidate Starts for Saguaro_48:

(23, 41793), (24, 41790), (Start: 34 @41742 has 3 MA's), (41, 41700), (48, 41655), (50, 41652), (54,
41640), (90, 41463), (93, 41460), (104, 41394), (108, 41358), (116, 41319),

Gene: Salacia_105 Start: 52144, Stop: 52776, Start Num: 29

Candidate Starts for Salacia_105:

(Start: 29 @52144 has 172 MA's), (98, 52483), (110, 52561), (129, 52669), (141, 52771),

Gene: Samaymay_47 Start: 40271, Stop: 39717, Start Num: 36

Candidate Starts for Samaymay_47:

(Start: 17 @40355 has 57 MA's), (Start: 19 @40349 has 3 MA's), (Start: 21 @40346 has 1 MA's),
(Start: 36 @40271 has 204 MA's), (47, 40208), (48, 40205), (50, 40202), (65, 40148), (108, 39935),
(121, 39869), (139, 39728),

Gene: SassyCat97_46 Start: 39983, Stop: 39423, Start Num: 36

Candidate Starts for SassyCat97_46:

(Start: 17 @40067 has 57 MA's), (Start: 19 @40061 has 3 MA's), (Start: 21 @40058 has 1 MA's),
(Start: 36 @39983 has 204 MA's), (47, 39914), (48, 39911), (50, 39908), (90, 39743), (108, 39641),
(139, 39434),

Gene: Sauce_102 Start: 51006, Stop: 51638, Start Num: 29

Candidate Starts for Sauce_102:

(Start: 29 @51006 has 172 MA's), (98, 51345), (110, 51423), (129, 51531), (141, 51633),

Gene: Schadenfreude_46 Start: 39825, Stop: 39265, Start Num: 36

Candidate Starts for Schadenfreude_46:

(Start: 17 @39909 has 57 MA's), (Start: 19 @39903 has 3 MA's), (Start: 21 @39900 has 1 MA's),
(Start: 36 @39825 has 204 MA's), (47, 39756), (48, 39753), (50, 39750), (90, 39585), (108, 39483),
(139, 39276),

Gene: Schueller_46 Start: 40080, Stop: 39436, Start Num: 17

Candidate Starts for Schueller_46:

(Start: 17 @40080 has 57 MA's), (Start: 19 @40074 has 3 MA's), (Start: 21 @40071 has 1 MA's),
(Start: 36 @39996 has 204 MA's), (47, 39927), (48, 39924), (50, 39921), (65, 39867), (108, 39654),
(139, 39447),

Gene: ScoobyDoobyDoo_226 Start: 130612, Stop: 131253, Start Num: 29

Candidate Starts for ScoobyDoobyDoo_226:

(Start: 29 @130612 has 172 MA's), (Start: 49 @130723 has 4 MA's), (71, 130816), (82, 130882), (87,
130903), (96, 130942), (98, 130960), (99, 130966), (110, 131038), (129, 131146), (133, 131164),

Gene: Scoot17C_48 Start: 40414, Stop: 39854, Start Num: 36

Candidate Starts for Scoot17C_48:

(Start: 17 @40498 has 57 MA's), (Start: 19 @40492 has 3 MA's), (Start: 21 @40489 has 1 MA's),
(Start: 36 @40414 has 204 MA's), (47, 40345), (48, 40342), (50, 40339), (65, 40285), (108, 40072),

Gene: ScottMcG_98 Start: 50768, Stop: 51400, Start Num: 29

Candidate Starts for ScottMcG_98:

(Start: 29 @50768 has 172 MA's), (98, 51107), (110, 51185), (129, 51293), (141, 51395),

Gene: Scrick_47 Start: 40007, Stop: 39447, Start Num: 36

Candidate Starts for Scrick_47:

(Start: 17 @40091 has 57 MA's), (Start: 19 @40085 has 3 MA's), (Start: 21 @40082 has 1 MA's),
(Start: 36 @40007 has 204 MA's), (47, 39938), (48, 39935), (50, 39932), (65, 39878), (90, 39767),
(108, 39665), (139, 39458),

Gene: Sebata_103 Start: 52475, Stop: 53107, Start Num: 29

Candidate Starts for Sebata_103:

(Start: 29 @52475 has 172 MA's), (98, 52814), (110, 52892), (129, 53000), (141, 53102),

Gene: Selr12_47 Start: 40094, Stop: 39450, Start Num: 17

Candidate Starts for Selr12_47:

(Start: 17 @40094 has 57 MA's), (Start: 19 @40088 has 3 MA's), (Start: 21 @40085 has 1 MA's),
(Start: 36 @40010 has 204 MA's), (47, 39941), (48, 39938), (50, 39935), (90, 39770), (108, 39668),
(139, 39461),

Gene: Serendipity_47 Start: 40295, Stop: 39741, Start Num: 36

Candidate Starts for Serendipity_47:

(Start: 17 @40379 has 57 MA's), (Start: 19 @40373 has 3 MA's), (Start: 21 @40370 has 1 MA's),
(Start: 36 @40295 has 204 MA's), (47, 40232), (48, 40229), (50, 40226), (65, 40172), (108, 39959),
(121, 39893), (139, 39752),

Gene: Serpentine_0047 Start: 40366, Stop: 39722, Start Num: 17

Candidate Starts for Serpentine_0047:

(Start: 17 @40366 has 57 MA's), (Start: 19 @40360 has 3 MA's), (Start: 21 @40357 has 1 MA's),
(Start: 36 @40282 has 204 MA's), (47, 40213), (48, 40210), (50, 40207), (65, 40153), (90, 40042),
(108, 39940), (139, 39733),

Gene: Shaqnato_94 Start: 49881, Stop: 50513, Start Num: 29

Candidate Starts for Shaqnato_94:

(Start: 29 @49881 has 172 MA's), (98, 50220), (110, 50298), (129, 50406), (141, 50508),

Gene: Sheila_47 Start: 40319, Stop: 39759, Start Num: 36

Candidate Starts for Sheila_47:

(Start: 29 @40361 has 172 MA's), (Start: 36 @40319 has 204 MA's), (47, 40250), (48, 40247), (50, 40244), (65, 40190), (108, 39977), (139, 39770),

Gene: Shelob_103 Start: 52591, Stop: 53223, Start Num: 29

Candidate Starts for Shelob_103:

(Start: 29 @52591 has 172 MA's), (98, 52930), (110, 53008), (129, 53116), (141, 53218),

Gene: ShiVal_47 Start: 40281, Stop: 39721, Start Num: 36

Candidate Starts for ShiVal_47:

(Start: 17 @40365 has 57 MA's), (Start: 19 @40359 has 3 MA's), (Start: 21 @40356 has 1 MA's), (Start: 36 @40281 has 204 MA's), (47, 40212), (48, 40209), (50, 40206), (65, 40152), (108, 39939), (139, 39732),

Gene: ShiaLabeouf_100 Start: 51130, Stop: 51762, Start Num: 29

Candidate Starts for ShiaLabeouf_100:

(Start: 8 @51043 has 5 MA's), (Start: 29 @51130 has 172 MA's), (98, 51469), (110, 51547), (129, 51655), (141, 51757),

Gene: Shifa_90 Start: 49856, Stop: 50488, Start Num: 29

Candidate Starts for Shifa_90:

(Start: 29 @49856 has 172 MA's), (98, 50195), (110, 50273), (129, 50381), (141, 50483),

Gene: Shnickers_101 Start: 51094, Stop: 51726, Start Num: 29

Candidate Starts for Shnickers_101:

(Start: 8 @51007 has 5 MA's), (Start: 29 @51094 has 172 MA's), (98, 51433), (110, 51511), (129, 51619), (141, 51721),

Gene: Shrimp_101 Start: 51808, Stop: 52446, Start Num: 29

Candidate Starts for Shrimp_101:

(Start: 29 @51808 has 172 MA's), (98, 52153), (110, 52231), (129, 52339), (141, 52441),

Gene: Sigman_48 Start: 40489, Stop: 39845, Start Num: 17

Candidate Starts for Sigman_48:

(Start: 17 @40489 has 57 MA's), (Start: 19 @40483 has 3 MA's), (Start: 21 @40480 has 1 MA's), (Start: 36 @40405 has 204 MA's), (47, 40336), (48, 40333), (50, 40330), (65, 40276), (108, 40063),

Gene: SilverBell_47 Start: 40384, Stop: 39740, Start Num: 17

Candidate Starts for SilverBell_47:

(Start: 17 @40384 has 57 MA's), (Start: 19 @40378 has 3 MA's), (Start: 21 @40375 has 1 MA's), (Start: 36 @40300 has 204 MA's), (47, 40231), (48, 40228), (50, 40225), (65, 40171), (90, 40060), (108, 39958), (139, 39751),

Gene: SilverDipper_102 Start: 50338, Stop: 50970, Start Num: 29

Candidate Starts for SilverDipper_102:

(Start: 8 @50251 has 5 MA's), (Start: 29 @50338 has 172 MA's), (98, 50677), (110, 50755), (129, 50863), (141, 50965),

Gene: Simielle_46 Start: 39964, Stop: 39410, Start Num: 36

Candidate Starts for Simielle_46:

(Start: 17 @40048 has 57 MA's), (Start: 19 @40042 has 3 MA's), (Start: 21 @40039 has 1 MA's),
(Start: 36 @39964 has 204 MA's), (47, 39901), (48, 39898), (50, 39895), (65, 39841), (108, 39628),
(121, 39562), (139, 39421),

Gene: SirBeauregard_47 Start: 39977, Stop: 39417, Start Num: 36

Candidate Starts for SirBeauregard_47:

(Start: 17 @40061 has 57 MA's), (Start: 19 @40055 has 3 MA's), (Start: 21 @40052 has 1 MA's),
(Start: 36 @39977 has 204 MA's), (47, 39908), (48, 39905), (50, 39902), (65, 39848), (108, 39635),
(139, 39428),

Gene: Skippy_47 Start: 40265, Stop: 39705, Start Num: 36

Candidate Starts for Skippy_47:

(Start: 17 @40349 has 57 MA's), (Start: 19 @40343 has 3 MA's), (Start: 21 @40340 has 1 MA's),
(Start: 36 @40265 has 204 MA's), (47, 40196), (48, 40193), (50, 40190), (65, 40136), (108, 39923),
(139, 39716),

Gene: Slatt_47 Start: 40291, Stop: 39731, Start Num: 36

Candidate Starts for Slatt_47:

(Start: 17 @40375 has 57 MA's), (Start: 19 @40369 has 3 MA's), (Start: 21 @40366 has 1 MA's),
(Start: 36 @40291 has 204 MA's), (47, 40222), (48, 40219), (50, 40216), (65, 40162), (90, 40051),
(108, 39949), (139, 39742),

Gene: SmallFry_101 Start: 50319, Stop: 50951, Start Num: 29

Candidate Starts for SmallFry_101:

(Start: 8 @50232 has 5 MA's), (Start: 29 @50319 has 172 MA's), (98, 50658), (110, 50736), (129,
50844), (141, 50946),

Gene: Soile_47 Start: 39994, Stop: 39434, Start Num: 36

Candidate Starts for Soile_47:

(Start: 17 @40078 has 57 MA's), (Start: 19 @40072 has 3 MA's), (Start: 21 @40069 has 1 MA's),
(Start: 36 @39994 has 204 MA's), (47, 39925), (48, 39922), (50, 39919), (65, 39865), (108, 39652),
(139, 39445),

Gene: Solosis_46 Start: 39992, Stop: 39432, Start Num: 36

Candidate Starts for Solosis_46:

(Start: 17 @40076 has 57 MA's), (Start: 19 @40070 has 3 MA's), (Start: 21 @40067 has 1 MA's),
(Start: 36 @39992 has 204 MA's), (47, 39923), (48, 39920), (50, 39917), (65, 39863), (108, 39650),
(139, 39443),

Gene: Sophia_46 Start: 39986, Stop: 39432, Start Num: 36

Candidate Starts for Sophia_46:

(Start: 17 @40070 has 57 MA's), (Start: 19 @40064 has 3 MA's), (Start: 21 @40061 has 1 MA's),
(Start: 36 @39986 has 204 MA's), (47, 39923), (48, 39920), (50, 39917), (65, 39863), (108, 39650),
(121, 39584), (139, 39443),

Gene: Soto_47 Start: 40291, Stop: 39731, Start Num: 36

Candidate Starts for Soto_47:

(Start: 29 @40333 has 172 MA's), (Start: 36 @40291 has 204 MA's), (47, 40222), (48, 40219), (50,
40216), (65, 40162), (108, 39949), (139, 39742),

Gene: SparkleGoddess_256 Start: 123985, Stop: 124458, Start Num: 58

Candidate Starts for SparkleGoddess_256:

(53, 123967), (Start: 58 @123985 has 5 MA's), (85, 124111), (86, 124114), (95, 124147), (106, 124222), (110, 124258), (122, 124315), (126, 124333), (136, 124438),

Gene: Spartan300_47 Start: 40277, Stop: 39717, Start Num: 36

Candidate Starts for Spartan300_47:

(Start: 17 @40361 has 57 MA's), (Start: 19 @40355 has 3 MA's), (Start: 21 @40352 has 1 MA's), (Start: 36 @40277 has 204 MA's), (47, 40208), (48, 40205), (50, 40202), (65, 40148), (108, 39935), (139, 39728),

Gene: Spec_97 Start: 50859, Stop: 51491, Start Num: 29

Candidate Starts for Spec_97:

(Start: 8 @50772 has 5 MA's), (Start: 29 @50859 has 172 MA's), (98, 51198), (110, 51276), (129, 51384), (141, 51486),

Gene: Specks_106 Start: 52993, Stop: 53625, Start Num: 29

Candidate Starts for Specks_106:

(Start: 8 @52906 has 5 MA's), (Start: 29 @52993 has 172 MA's), (98, 53332), (110, 53410), (129, 53518), (141, 53620),

Gene: Sprinklers_97 Start: 50378, Stop: 51010, Start Num: 29

Candidate Starts for Sprinklers_97:

(Start: 29 @50378 has 172 MA's), (98, 50717), (110, 50795), (129, 50903), (141, 51005),

Gene: Spud_101 Start: 51893, Stop: 52525, Start Num: 29

Candidate Starts for Spud_101:

(Start: 29 @51893 has 172 MA's), (98, 52232), (110, 52310), (129, 52418), (141, 52520),

Gene: Squid_47 Start: 40067, Stop: 39423, Start Num: 17

Candidate Starts for Squid_47:

(Start: 17 @40067 has 57 MA's), (Start: 19 @40061 has 3 MA's), (Start: 21 @40058 has 1 MA's), (Start: 36 @39983 has 204 MA's), (47, 39914), (48, 39911), (50, 39908), (90, 39743), (108, 39641), (139, 39434),

Gene: Squiggle_47 Start: 40001, Stop: 39441, Start Num: 36

Candidate Starts for Squiggle_47:

(Start: 17 @40085 has 57 MA's), (Start: 19 @40079 has 3 MA's), (Start: 21 @40076 has 1 MA's), (Start: 36 @40001 has 204 MA's), (47, 39932), (48, 39929), (50, 39926), (65, 39872), (108, 39659), (139, 39452),

Gene: SrishMeg2525_100 Start: 51912, Stop: 52544, Start Num: 29

Candidate Starts for SrishMeg2525_100:

(Start: 29 @51912 has 172 MA's), (98, 52251), (110, 52329), (129, 52437), (141, 52539),

Gene: StephanieG_100 Start: 52717, Stop: 53355, Start Num: 29

Candidate Starts for StephanieG_100:

(Start: 29 @52717 has 172 MA's), (98, 53062), (110, 53140), (129, 53248), (141, 53350),

Gene: Stigma_254 Start: 123698, Stop: 124171, Start Num: 58

Candidate Starts for Stigma_254:

(53, 123680), (Start: 58 @123698 has 5 MA's), (85, 123824), (86, 123827), (95, 123860), (106, 123935), (110, 123971), (122, 124028), (126, 124046), (136, 124151),

Gene: Struggle_46 Start: 39833, Stop: 39273, Start Num: 36

Candidate Starts for Struggle_46:

(Start: 17 @39917 has 57 MA's), (Start: 19 @39911 has 3 MA's), (Start: 21 @39908 has 1 MA's),
(Start: 36 @39833 has 204 MA's), (47, 39764), (48, 39761), (50, 39758), (65, 39704), (108, 39491),
(139, 39284),

Gene: Stubby_94 Start: 50013, Stop: 50645, Start Num: 29

Candidate Starts for Stubby_94:

(Start: 29 @50013 has 172 MA's), (98, 50352), (110, 50430), (129, 50538), (141, 50640),

Gene: StubbySaigey_104 Start: 50510, Stop: 51142, Start Num: 29

Candidate Starts for StubbySaigey_104:

(Start: 29 @50510 has 172 MA's), (98, 50849), (110, 50927), (129, 51035), (141, 51137),

Gene: Suffolk_47 Start: 40282, Stop: 39722, Start Num: 36

Candidate Starts for Suffolk_47:

(Start: 17 @40366 has 57 MA's), (Start: 19 @40360 has 3 MA's), (Start: 21 @40357 has 1 MA's),
(Start: 36 @40282 has 204 MA's), (47, 40213), (48, 40210), (50, 40207), (65, 40153), (108, 39940),
(139, 39733),

Gene: Sunny_ Start: 11517, Stop: 12002, Start Num: 51

Candidate Starts for Sunny_:

(Start: 51 @11517 has 2 MA's), (81, 11652), (89, 11685), (98, 11730), (106, 11772), (111, 11811),
(119, 11850), (128, 11907), (132, 11925), (136, 11982),

Gene: Surely_47 Start: 40288, Stop: 39728, Start Num: 36

Candidate Starts for Surely_47:

(Start: 17 @40372 has 57 MA's), (Start: 19 @40366 has 3 MA's), (Start: 21 @40363 has 1 MA's),
(Start: 36 @40288 has 204 MA's), (47, 40219), (48, 40216), (50, 40213), (90, 40048), (108, 39946),
(139, 39739),

Gene: Swiphy_49 Start: 40367, Stop: 39723, Start Num: 17

Candidate Starts for Swiphy_49:

(Start: 17 @40367 has 57 MA's), (Start: 19 @40361 has 3 MA's), (Start: 21 @40358 has 1 MA's),
(Start: 36 @40283 has 204 MA's), (47, 40214), (48, 40211), (50, 40208), (90, 40043), (108, 39941),
(139, 39734),

Gene: Swish_48 Start: 40406, Stop: 39846, Start Num: 36

Candidate Starts for Swish_48:

(Start: 17 @40490 has 57 MA's), (Start: 19 @40484 has 3 MA's), (Start: 21 @40481 has 1 MA's),
(Start: 36 @40406 has 204 MA's), (47, 40337), (48, 40334), (50, 40331), (65, 40277), (108, 40064),

Gene: Tainan_105 Start: 52316, Stop: 52948, Start Num: 29

Candidate Starts for Tainan_105:

(Start: 8 @52229 has 5 MA's), (Start: 29 @52316 has 172 MA's), (98, 52655), (110, 52733), (129,
52841), (141, 52943),

Gene: TallGrassMM_47 Start: 39985, Stop: 39347, Start Num: 17

Candidate Starts for TallGrassMM_47:

(Start: 17 @39985 has 57 MA's), (Start: 19 @39979 has 3 MA's), (Start: 21 @39976 has 1 MA's),
(Start: 36 @39901 has 204 MA's), (47, 39838), (48, 39835), (50, 39832), (65, 39778), (108, 39565),
(121, 39499), (139, 39358),

Gene: Teardrop_100 Start: 50317, Stop: 50949, Start Num: 29

Candidate Starts for Teardrop_100:

(Start: 8 @50230 has 5 MA's), (Start: 29 @50317 has 172 MA's), (98, 50656), (110, 50734), (129, 50842), (141, 50944),

Gene: Telesworld_46 Start: 39980, Stop: 39420, Start Num: 36

Candidate Starts for Telesworld_46:

(Start: 17 @40064 has 57 MA's), (Start: 19 @40058 has 3 MA's), (Start: 21 @40055 has 1 MA's), (Start: 36 @39980 has 204 MA's), (47, 39911), (48, 39908), (50, 39905), (65, 39851), (90, 39740), (108, 39638), (139, 39431),

Gene: Thora_47 Start: 40287, Stop: 39727, Start Num: 36

Candidate Starts for Thora_47:

(Start: 17 @40371 has 57 MA's), (Start: 19 @40365 has 3 MA's), (Start: 21 @40362 has 1 MA's), (Start: 36 @40287 has 204 MA's), (47, 40218), (48, 40215), (50, 40212), (90, 40047), (108, 39945), (139, 39738),

Gene: ThreeOh3D2_48 Start: 40504, Stop: 39860, Start Num: 17

Candidate Starts for ThreeOh3D2_48:

(Start: 17 @40504 has 57 MA's), (Start: 19 @40498 has 3 MA's), (Start: 21 @40495 has 1 MA's), (Start: 36 @40420 has 204 MA's), (47, 40351), (48, 40348), (50, 40345), (65, 40291), (108, 40078),

Gene: Thunderbird_46 Start: 40072, Stop: 39428, Start Num: 17

Candidate Starts for Thunderbird_46:

(Start: 17 @40072 has 57 MA's), (Start: 19 @40066 has 3 MA's), (Start: 21 @40063 has 1 MA's), (Start: 36 @39988 has 204 MA's), (47, 39919), (48, 39916), (50, 39913), (65, 39859), (108, 39646), (139, 39439),

Gene: Timmi_46 Start: 39987, Stop: 39433, Start Num: 36

Candidate Starts for Timmi_46:

(Start: 17 @40071 has 57 MA's), (Start: 19 @40065 has 3 MA's), (Start: 21 @40062 has 1 MA's), (Start: 36 @39987 has 204 MA's), (47, 39924), (48, 39921), (50, 39918), (65, 39864), (108, 39651), (121, 39585), (139, 39444),

Gene: TinyTim_101 Start: 51570, Stop: 52202, Start Num: 29

Candidate Starts for TinyTim_101:

(Start: 29 @51570 has 172 MA's), (98, 51909), (110, 51987), (129, 52095), (141, 52197),

Gene: TomBombadil_47 Start: 40272, Stop: 39718, Start Num: 36

Candidate Starts for TomBombadil_47:

(Start: 17 @40356 has 57 MA's), (Start: 19 @40350 has 3 MA's), (Start: 21 @40347 has 1 MA's), (Start: 36 @40272 has 204 MA's), (47, 40209), (48, 40206), (50, 40203), (65, 40149), (108, 39936), (121, 39870), (139, 39729),

Gene: Tomlarah_47 Start: 40275, Stop: 39715, Start Num: 36

Candidate Starts for Tomlarah_47:

(Start: 17 @40359 has 57 MA's), (Start: 19 @40353 has 3 MA's), (Start: 21 @40350 has 1 MA's), (Start: 36 @40275 has 204 MA's), (47, 40206), (48, 40203), (50, 40200), (65, 40146), (108, 39933), (139, 39726),

Gene: Tonenili_116 Start: 55317, Stop: 55949, Start Num: 29

Candidate Starts for Tonenili_116:

(7, 55221), (Start: 29 @55317 has 172 MA's), (98, 55656), (107, 55713), (110, 55734), (129, 55842), (141, 55944),

Gene: Toni_46 Start: 39979, Stop: 39425, Start Num: 36

Candidate Starts for Toni_46:

(Start: 17 @40063 has 57 MA's), (Start: 19 @40057 has 3 MA's), (Start: 21 @40054 has 1 MA's),
(Start: 36 @39979 has 204 MA's), (47, 39916), (48, 39913), (50, 39910), (65, 39856), (108, 39643),
(121, 39577), (139, 39436),

Gene: TooFast2Furius_49 Start: 40601, Stop: 39957, Start Num: 17

Candidate Starts for TooFast2Furius_49:

(Start: 17 @40601 has 57 MA's), (Start: 19 @40595 has 3 MA's), (Start: 21 @40592 has 1 MA's),
(Start: 36 @40517 has 204 MA's), (47, 40448), (48, 40445), (50, 40442), (65, 40388), (108, 40175),
(139, 39968),

Gene: Tooj_47 Start: 40342, Stop: 39782, Start Num: 36

Candidate Starts for Tooj_47:

(Start: 17 @40426 has 57 MA's), (Start: 19 @40420 has 3 MA's), (Start: 21 @40417 has 1 MA's),
(Start: 36 @40342 has 204 MA's), (47, 40273), (48, 40270), (50, 40267), (65, 40213), (90, 40102),
(108, 40000), (139, 39793),

Gene: Tortoise16_98 Start: 50918, Stop: 51550, Start Num: 29

Candidate Starts for Tortoise16_98:

(Start: 8 @50831 has 5 MA's), (Start: 29 @50918 has 172 MA's), (98, 51257), (110, 51335), (129,
51443), (141, 51545),

Gene: Trinitium_98 Start: 50276, Stop: 50908, Start Num: 29

Candidate Starts for Trinitium_98:

(Start: 29 @50276 has 172 MA's), (98, 50615), (110, 50693), (129, 50801), (141, 50903),

Gene: True_46 Start: 39985, Stop: 39425, Start Num: 36

Candidate Starts for True_46:

(Start: 17 @40069 has 57 MA's), (Start: 19 @40063 has 3 MA's), (Start: 21 @40060 has 1 MA's),
(Start: 36 @39985 has 204 MA's), (47, 39916), (48, 39913), (50, 39910), (90, 39745), (108, 39643),
(139, 39436),

Gene: Trypo_48 Start: 40500, Stop: 39856, Start Num: 17

Candidate Starts for Trypo_48:

(Start: 17 @40500 has 57 MA's), (Start: 19 @40494 has 3 MA's), (Start: 21 @40491 has 1 MA's),
(Start: 36 @40416 has 204 MA's), (47, 40347), (48, 40344), (50, 40341), (65, 40287), (108, 40074),

Gene: Turret_96 Start: 49715, Stop: 50353, Start Num: 29

Candidate Starts for Turret_96:

(Start: 29 @49715 has 172 MA's), (98, 50060), (110, 50138), (129, 50246), (141, 50348),

Gene: Tyke_102 Start: 52459, Stop: 53091, Start Num: 29

Candidate Starts for Tyke_102:

(Start: 8 @52372 has 5 MA's), (Start: 29 @52459 has 172 MA's), (98, 52798), (110, 52876), (129,
52984), (141, 53086),

Gene: TyrionL_46 Start: 39841, Stop: 39281, Start Num: 36

Candidate Starts for TyrionL_46:

(Start: 17 @39925 has 57 MA's), (Start: 19 @39919 has 3 MA's), (Start: 21 @39916 has 1 MA's),
(Start: 36 @39841 has 204 MA's), (47, 39772), (48, 39769), (50, 39766), (90, 39601), (108, 39499),
(139, 39292),

Gene: UAch1_47 Start: 40294, Stop: 39734, Start Num: 36

Candidate Starts for UAch1_47:

(Start: 17 @40378 has 57 MA's), (Start: 19 @40372 has 3 MA's), (Start: 21 @40369 has 1 MA's),
(Start: 36 @40294 has 204 MA's), (47, 40225), (48, 40222), (50, 40219), (90, 40054), (108, 39952),
(139, 39745),

Gene: UncleHowie_47 Start: 40068, Stop: 39424, Start Num: 17

Candidate Starts for UncleHowie_47:

(Start: 17 @40068 has 57 MA's), (Start: 19 @40062 has 3 MA's), (Start: 21 @40059 has 1 MA's),
(Start: 36 @39984 has 204 MA's), (47, 39915), (48, 39912), (50, 39909), (90, 39744), (108, 39642),
(139, 39435),

Gene: Usavi_47 Start: 40282, Stop: 39722, Start Num: 36

Candidate Starts for Usavi_47:

(Start: 36 @40282 has 204 MA's), (47, 40213), (48, 40210), (50, 40207), (65, 40153), (108, 39940),
(139, 39733),

Gene: Vaishali24_46 Start: 40027, Stop: 39383, Start Num: 17

Candidate Starts for Vaishali24_46:

(Start: 17 @40027 has 57 MA's), (Start: 19 @40021 has 3 MA's), (Start: 21 @40018 has 1 MA's),
(Start: 36 @39943 has 204 MA's), (47, 39874), (48, 39871), (50, 39868), (65, 39814), (90, 39703),
(108, 39601), (139, 39394),

Gene: Valjean_47 Start: 40280, Stop: 39720, Start Num: 36

Candidate Starts for Valjean_47:

(Start: 17 @40364 has 57 MA's), (Start: 19 @40358 has 3 MA's), (Start: 21 @40355 has 1 MA's),
(Start: 36 @40280 has 204 MA's), (47, 40211), (48, 40208), (50, 40205), (65, 40151), (108, 39938),
(139, 39731),

Gene: ValleyTerrace_101 Start: 50338, Stop: 50970, Start Num: 29

Candidate Starts for ValleyTerrace_101:

(Start: 8 @50251 has 5 MA's), (Start: 29 @50338 has 172 MA's), (98, 50677), (110, 50755), (129,
50863), (141, 50965),

Gene: Vaticameos_43 Start: 38050, Stop: 37412, Start Num: 17

Candidate Starts for Vaticameos_43:

(Start: 17 @38050 has 57 MA's), (Start: 19 @38044 has 3 MA's), (Start: 21 @38041 has 1 MA's),
(Start: 36 @37966 has 204 MA's), (47, 37903), (48, 37900), (50, 37897), (65, 37843), (108, 37630),
(121, 37564), (139, 37423),

Gene: Veritas_46 Start: 39847, Stop: 39287, Start Num: 36

Candidate Starts for Veritas_46:

(Start: 17 @39931 has 57 MA's), (Start: 19 @39925 has 3 MA's), (Start: 21 @39922 has 1 MA's),
(Start: 36 @39847 has 204 MA's), (48, 39775), (50, 39772), (65, 39718), (90, 39607), (108, 39505),
(139, 39298),

Gene: Vincenzo_43 Start: 41068, Stop: 40448, Start Num: 25

Candidate Starts for Vincenzo_43:

(Start: 25 @41068 has 2 MA's), (48, 40942), (59, 40909), (66, 40882), (71, 40849), (89, 40774), (93,
40768), (104, 40702), (117, 40621), (133, 40528), (139, 40459),

Gene: Virapocalypse_47 Start: 40275, Stop: 39715, Start Num: 36

Candidate Starts for Virapocalypse_47:

(Start: 17 @40359 has 57 MA's), (Start: 19 @40353 has 3 MA's), (Start: 21 @40350 has 1 MA's),
(Start: 36 @40275 has 204 MA's), (47, 40206), (48, 40203), (50, 40200), (90, 40035), (108, 39933),
(139, 39726),

Gene: Virgeve_46 Start: 40052, Stop: 39492, Start Num: 36

Candidate Starts for Virgeve_46:

(Start: 17 @40136 has 57 MA's), (Start: 19 @40130 has 3 MA's), (Start: 21 @40127 has 1 MA's),
(Start: 36 @40052 has 204 MA's), (47, 39983), (48, 39980), (50, 39977), (65, 39923), (108, 39710),
(139, 39503),

Gene: Vista_47 Start: 40363, Stop: 39725, Start Num: 19

Candidate Starts for Vista_47:

(Start: 17 @40369 has 57 MA's), (Start: 19 @40363 has 3 MA's), (Start: 21 @40360 has 1 MA's),
(Start: 36 @40285 has 204 MA's), (47, 40216), (48, 40213), (50, 40210), (90, 40045), (108, 39943),
(139, 39736),

Gene: Vivaldi_47 Start: 40389, Stop: 39751, Start Num: 19

Candidate Starts for Vivaldi_47:

(3, 40509), (13, 40404), (Start: 19 @40389 has 3 MA's), (Start: 21 @40386 has 1 MA's), (Start: 36
@40311 has 204 MA's), (47, 40242), (48, 40239), (50, 40236), (90, 40071), (108, 39969), (139,
39762),

Gene: Vortex_47 Start: 40066, Stop: 39428, Start Num: 17

Candidate Starts for Vortex_47:

(Start: 17 @40066 has 57 MA's), (Start: 19 @40060 has 3 MA's), (Start: 21 @40057 has 1 MA's),
(Start: 36 @39982 has 204 MA's), (47, 39919), (48, 39916), (50, 39913), (65, 39859), (108, 39646),
(121, 39580), (139, 39439),

Gene: Wallhey_46 Start: 39845, Stop: 39285, Start Num: 36

Candidate Starts for Wallhey_46:

(Start: 17 @39929 has 57 MA's), (Start: 19 @39923 has 3 MA's), (Start: 21 @39920 has 1 MA's),
(Start: 36 @39845 has 204 MA's), (47, 39776), (48, 39773), (50, 39770), (90, 39605), (108, 39503),
(139, 39296),

Gene: Wally_100 Start: 50348, Stop: 50980, Start Num: 29

Candidate Starts for Wally_100:

(Start: 29 @50348 has 172 MA's), (98, 50687), (110, 50765), (129, 50873), (141, 50975),

Gene: Waterdiva_47 Start: 40361, Stop: 39717, Start Num: 17

Candidate Starts for Waterdiva_47:

(Start: 17 @40361 has 57 MA's), (Start: 19 @40355 has 3 MA's), (Start: 21 @40352 has 1 MA's),
(Start: 36 @40277 has 204 MA's), (47, 40208), (48, 40205), (50, 40202), (65, 40148), (108, 39935),
(139, 39728),

Gene: Weher20_47 Start: 40276, Stop: 39716, Start Num: 36

Candidate Starts for Weher20_47:

(Start: 17 @40360 has 57 MA's), (Start: 19 @40354 has 3 MA's), (Start: 21 @40351 has 1 MA's),
(Start: 36 @40276 has 204 MA's), (47, 40207), (48, 40204), (50, 40201), (65, 40147), (90, 40036),
(108, 39934), (139, 39727),

Gene: Westy_259 Start: 124515, Stop: 124988, Start Num: 58

Candidate Starts for Westy_259:

(53, 124497), (Start: 58 @124515 has 5 MA's), (85, 124641), (86, 124644), (95, 124677), (106, 124752), (110, 124788), (111, 124791), (122, 124845), (126, 124863), (134, 124929), (136, 124968),

Gene: Widow_49 Start: 37464, Stop: 36880, Start Num: 30

Candidate Starts for Widow_49:

(6, 37569), (11, 37536), (27, 37476), (Start: 30 @37464 has 2 MA's), (32, 37455), (Start: 52 @37359 has 1 MA's), (74, 37254), (84, 37203), (127, 36993), (136, 36900),

Gene: Willis_102 Start: 51699, Stop: 52337, Start Num: 29

Candidate Starts for Willis_102:

(Start: 29 @51699 has 172 MA's), (98, 52044), (129, 52230), (141, 52332),

Gene: Windsor_46 Start: 39981, Stop: 39421, Start Num: 36

Candidate Starts for Windsor_46:

(Start: 17 @40065 has 57 MA's), (Start: 19 @40059 has 3 MA's), (Start: 21 @40056 has 1 MA's), (Start: 36 @39981 has 204 MA's), (47, 39912), (48, 39909), (50, 39906), (65, 39852), (108, 39639), (139, 39432),

Gene: Wooper_42 Start: 35889, Stop: 35314, Start Num: 28

Candidate Starts for Wooper_42:

(Start: 28 @35889 has 8 MA's), (38, 35850), (64, 35739), (73, 35700), (99, 35577), (102, 35565), (104, 35556), (109, 35514), (110, 35511), (111, 35508), (113, 35499),

Gene: Xavier_46 Start: 40073, Stop: 39435, Start Num: 17

Candidate Starts for Xavier_46:

(Start: 17 @40073 has 57 MA's), (Start: 19 @40067 has 3 MA's), (Start: 21 @40064 has 1 MA's), (Start: 36 @39989 has 204 MA's), (47, 39926), (48, 39923), (50, 39920), (65, 39866), (108, 39653), (121, 39587), (139, 39446),

Gene: Yassified_98 Start: 50425, Stop: 51057, Start Num: 29

Candidate Starts for Yassified_98:

(Start: 29 @50425 has 172 MA's), (98, 50764), (110, 50842), (129, 50950), (141, 51052),

Gene: YemiJoy2021_102 Start: 51801, Stop: 52439, Start Num: 29

Candidate Starts for YemiJoy2021_102:

(Start: 29 @51801 has 172 MA's), (98, 52146), (110, 52224), (129, 52332), (141, 52434),

Gene: Yeshua_42 Start: 35866, Stop: 35291, Start Num: 28

Candidate Starts for Yeshua_42:

(Start: 28 @35866 has 8 MA's), (38, 35827), (64, 35716), (73, 35677), (99, 35554), (102, 35542), (104, 35533), (109, 35491), (110, 35488), (111, 35485), (113, 35476),

Gene: Yoshand_48 Start: 40419, Stop: 39859, Start Num: 36

Candidate Starts for Yoshand_48:

(Start: 17 @40503 has 57 MA's), (Start: 19 @40497 has 3 MA's), (Start: 21 @40494 has 1 MA's), (Start: 36 @40419 has 204 MA's), (47, 40350), (48, 40347), (50, 40344), (65, 40290), (108, 40077),

Gene: YouGoGlencoco_47 Start: 40279, Stop: 39719, Start Num: 36

Candidate Starts for YouGoGlencoco_47:

(Start: 17 @40363 has 57 MA's), (Start: 19 @40357 has 3 MA's), (Start: 21 @40354 has 1 MA's), (Start: 36 @40279 has 204 MA's), (47, 40210), (48, 40207), (50, 40204), (90, 40039), (108, 39937), (139, 39730),

Gene: YoungMoneyMata_102 Start: 50971, Stop: 51603, Start Num: 29
Candidate Starts for YoungMoneyMata_102:
(Start: 29 @50971 has 172 MA's), (98, 51310), (110, 51388), (129, 51496), (141, 51598),

Gene: Yucca_101 Start: 51489, Stop: 52121, Start Num: 29
Candidate Starts for Yucca_101:
(Start: 29 @51489 has 172 MA's), (98, 51828), (110, 51906), (129, 52014), (141, 52116),

Gene: Zaider_48 Start: 40509, Stop: 39949, Start Num: 36
Candidate Starts for Zaider_48:
(Start: 17 @40593 has 57 MA's), (Start: 19 @40587 has 3 MA's), (Start: 21 @40584 has 1 MA's),
(Start: 36 @40509 has 204 MA's), (47, 40440), (48, 40437), (50, 40434), (90, 40269), (108, 40167),
(139, 39960),

Gene: Zalkecks_102 Start: 51490, Stop: 52122, Start Num: 29
Candidate Starts for Zalkecks_102:
(Start: 29 @51490 has 172 MA's), (98, 51829), (110, 51907), (129, 52015), (141, 52117),

Gene: Zeenon_103 Start: 51575, Stop: 52207, Start Num: 29
Candidate Starts for Zeenon_103:
(Start: 29 @51575 has 172 MA's), (98, 51914), (110, 51992), (129, 52100), (141, 52202),

Gene: Zelda_47 Start: 40326, Stop: 39766, Start Num: 36
Candidate Starts for Zelda_47:
(Start: 17 @40410 has 57 MA's), (Start: 19 @40404 has 3 MA's), (Start: 21 @40401 has 1 MA's),
(Start: 36 @40326 has 204 MA's), (47, 40257), (48, 40254), (50, 40251), (90, 40086), (108, 39984),
(139, 39777),

Gene: Zonia_47 Start: 40296, Stop: 39736, Start Num: 36
Candidate Starts for Zonia_47:
(Start: 17 @40380 has 57 MA's), (Start: 19 @40374 has 3 MA's), (Start: 21 @40371 has 1 MA's),
(Start: 36 @40296 has 204 MA's), (47, 40227), (48, 40224), (50, 40221), (90, 40056), (108, 39954),
(139, 39747),

Gene: ZygoTaiga_100 Start: 52729, Stop: 53367, Start Num: 29
Candidate Starts for ZygoTaiga_100:
(Start: 29 @52729 has 172 MA's), (98, 53074), (110, 53152), (129, 53260), (141, 53362),